

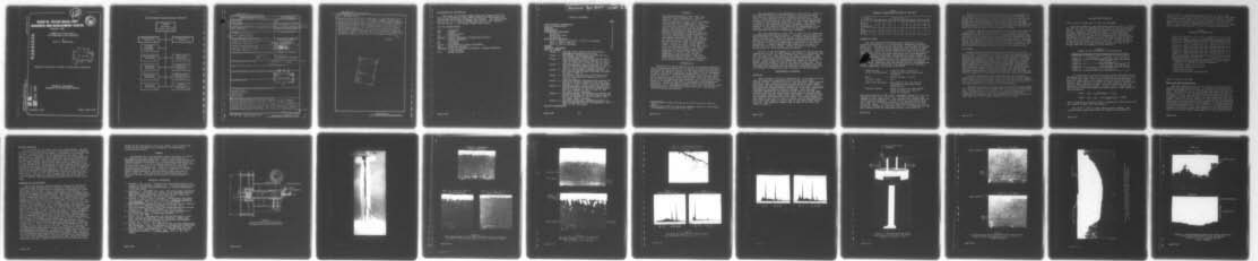
AD-A047 536

DAVID W TAYLOR NAVAL SHIP RESEARCH AND DEVELOPMENT CE--ETC F/G 13/10  
BURNER-RIG SIMULATION OF LOW-TEMPERATURE HOT CORROSION.(U)  
NOV 77 L F APRIGLIANO  
MAT-77-68

UNCLASSIFIED

NL

| OF |  
AD  
A047 536



END  
DATE  
FILMED

| - 78

DDC

Report MAT-77-68

12  
B.S.



# DAVID W. TAYLOR NAVAL SHIP RESEARCH AND DEVELOPMENT CENTER

Bethesda, Md. 20084

BURNER-RIG SIMULATION OF  
LOW-TEMPERATURE HOT CORROSION

by  
Louis F. Aprigliano

AD A 0 4 7 5 3 6

DDC  
RECEIVED  
DEC 14 1977  
F.

Approved for public release; distribution unlimited.

Burner-Rig Simulation of  
Low-Temperature Hot Corrosion

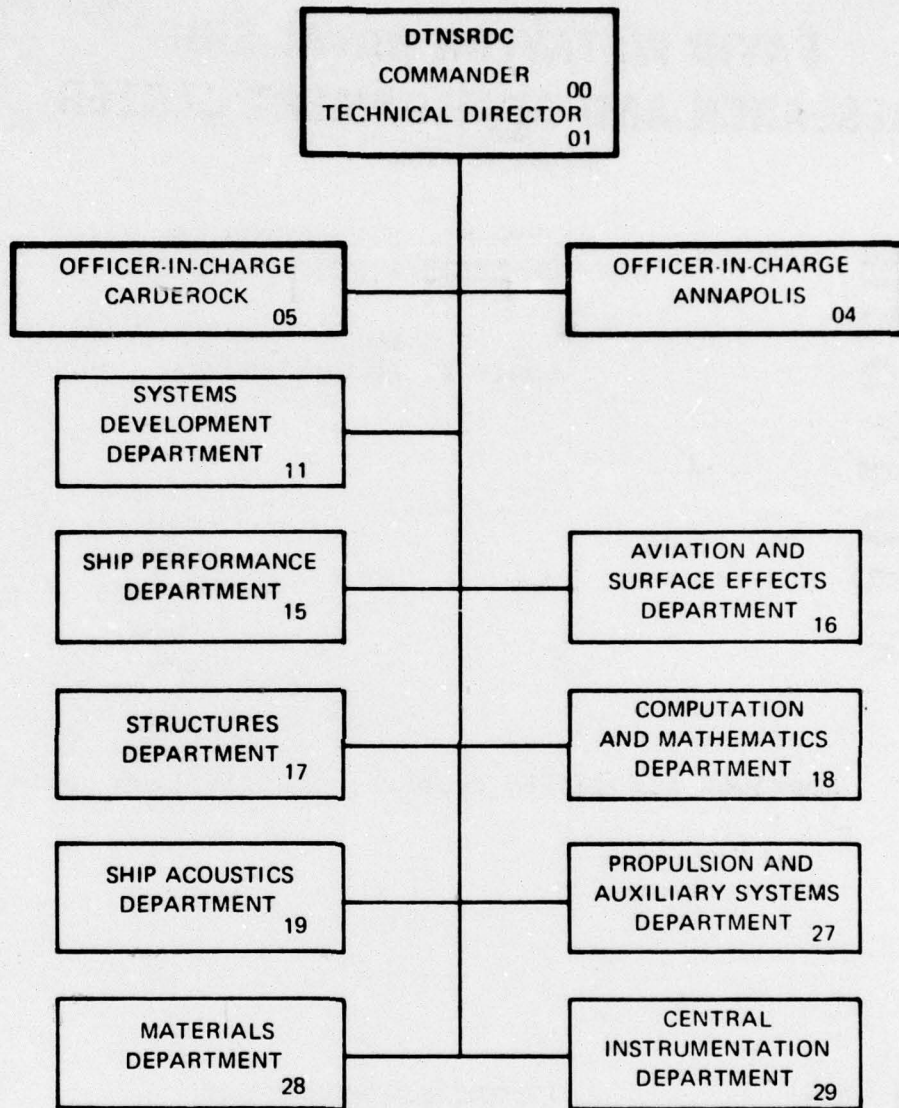
AD No. —  
DDC FILE COPY

MATERIALS DEPARTMENT  
RESEARCH AND DEVELOPMENT REPORT

November 1977

Report MAT-77-68

MAJOR DTNSRDC ORGANIZATIONAL COMPONENTS



UNCLASSIFIED

SECURITY CLASSIFICATION OF THIS PAGE (When Data Entered)

REPORT DOCUMENTATION PAGE		READ INSTRUCTIONS BEFORE COMPLETING FORM	
1. REPORT NUMBER 14 MAT-77-68 ✓	2. GOVT ACCESSION NO.	3. RECIPIENT'S CATALOG NUMBER 9	
4. TITLE (and Subtitle) 6 BURNER-RIG SIMULATION OF LOW-TEMPERATURE HOT CORROSION		5. TYPE OF REPORT & PERIOD COVERED Research & Development rept.,	
7. AUTHOR(s) 10 Louis F. Aprigliano		6. PERFORMING ORG. REPORT NUMBER	
9. PERFORMING ORGANIZATION NAME AND ADDRESS David W. Taylor Naval Ship R&D Center Annapolis, Maryland 21402	10. PROGRAM ELEMENT, PROJECT, TASK AREA & WORK UNIT NUMBERS Work Unit 2812-122 Task Area S0379-SL001 Task 16869	8. CONTRACT OR GRANT NUMBER(s)	
11. CONTROLLING OFFICE NAME AND ADDRESS David W. Taylor Naval Ship R&D Center Bethesda, Maryland 20084	12. REPORT DATE 11 Nov 77	13. NUMBER OF PAGES 27p	
14. MONITORING AGENCY NAME & ADDRESS (if different from Controlling Office) 12 27p.	15. SECURITY CLASS. (of this report) UNCLASSIFIED	15a. DECLASSIFICATION/DOWNGRADING SCHEDULE	
16. DISTRIBUTION STATEMENT (of this Report) Approved for public release; distribution unlimited.		17. DISTRIBUTION STATEMENT (of the abstract entered in Block 20, if different from Report) D D C RECEIVED DEC 14 1977 RECEIVED F	
18. SUPPLEMENTARY NOTES			
19. KEY WORDS (Continue on reverse side if necessary and identify by block number) Hot corrosion CoCrAlY coatings Burner rig Gas turbine			
20. ABSTRACT (Continue on reverse side if necessary and identify by block number) Low velocity burner-rig tests were conducted at four temperatures: 1200° F (649° C), 1300° F (704° C), 1400° F (760° C), and 1550° F (844° C) in an attempt to simulate the low-temperature (circa 1300° F (704° C)) attack that is occurring on marine gas turbine hot section components. The tests were made by exposing CoCrAlY-coated Rene 80 test pins to a burner-rig environment (over) → over			

DD FORM 1 JAN 73 1473

EDITION OF 1 NOV 65 IS OBSOLETE  
S/N 0102-LF-014-6601

UNCLASSIFIED 408 635  
SECURITY CLASSIFICATION OF THIS PAGE (When Data Entered)

MT

UNCLASSIFIED

SECURITY CLASSIFICATION OF THIS PAGE (When Data Entered)

20. ABSTRACT (Cont)

burning marine diesel fuel containing 1 weight percent S at a 30 to 1 air-to-fuel ratio. The test environment contained 5 parts per million sea salt at 1200° F (649° C) and 10 parts per million at the other three temperatures. At 1200° F (649° C) and 1400° F (760° C) after 750 hours, there was little or no hot-corrosion attack. At 1550° F (844° C) after 750 hours, typical high-temperature, hot-corrosion attack had occurred. At 1300° F (704° C) low-temperature, hot-corrosion attack was duplicated within 450 hours. The occurrence of low-temperature attack was found to be related to the presence of  $\text{CoSO}_4$ .

(Author)

ACCESSION for	
NTIS	White Section <input checked="" type="checkbox"/>
DGC	Blue Section <input type="checkbox"/>
UNANNOUNCED	JUS' LOCATION <input type="checkbox"/>
BY	
DISTRIBUTION/AVAILABILITY CODES	
Dist.	SPECIAL
A	

UNCLASSIFIED

SECURITY CLASSIFICATION OF THIS PAGE (When Data Entered)

## ADMINISTRATIVE INFORMATION

This work was supported under Work Unit Summary 2812-122, Task Area S0379-SL001, Task 16869 on Materials Development for Second Generation Navy Shipboard Gas Turbines. The program manager was Mr. C. L. Miller, NAVSEA (SEA 0331G). The technical monitor was Mr. J. Fairbanks, NAVSEC (SEC 6146B).

### LIST OF ABBREVIATIONS

atm	- atmosphere
bal	- balance
° C	- degree Celsius
cm	- centimetre
CoCrAlY	- cobalt, chromium, aluminum and yttrium
° F	- degree Fahrenheit
µm	- micrometre
mm	- millimetre
mg/cm <sup>2</sup>	- milligrams per square centimetre
p/m	- parts per million
SEM-EDXA	- scanning electron microscope - energy dispersive X-ray analysis
wt %	- weight percent

TABLE OF CONTENTS

	<u>Page</u>
ADMINISTRATIVE INFORMATION	i
LIST OF ABBREVIATIONS	i
ABSTRACT	1
INTRODUCTION	1
EXPERIMENTAL PROCEDURES	2
Materials	2
Burner-Rig Tests	3
Evaluation	4
RESULTS AND DISCUSSION	5
1200° F (649° C) and 1400° F (760° C) Rig Runs	5
1500° F (844° C) Rig Run	6
1300° F (704° C) Rig Run	7
SUMMARY	10
TECHNICAL REFERENCES	10
LIST OF FIGURES	
Figure 1 - Drawing; Cross Section of Low-Velocity, Atmospheric-Pressure Burner Rig	
Figure 2 - Photograph; Thermocouple Location for Surface Temperature Measurements	
Figure 3 - Photomicrographs; BC21 Coated Rene 80 Test Pins As-Coated and After Exposure at 1200° F (649° C) and 1400° F (760° C) for 750 Hours	
Figure 4 - Photomicrographs; BC21 Coated Rene 80 Test Pins As-Coated and After Exposure at 1500° F (844° C) for 750 Hours (500X, Unetched)	
Figure 5 - Electron Micrographs; SEM-EDXA Analysis of BC21 Coated Rene 80 Test Pin After 750 Hours at 1550° F (844° C)	
Figure 6 - Photograph; Platinum Pins and BC21 Coated Rene 80 Pins After 450 Hours at 1300° F (704° C) (1X)	
Figure 7 - Photomicrographs; Microstructures Within the Top-Third of BC21 Coated Rene 80 Test Pins Exposed at 1300° F (704° C) (500X, Unetched)	
Figure 8 - Photomicrograph; Microstructure Within the Bottom Two-Thirds of the BC21 Coated Rene 80 Test Pin Exposed at 1300° F (704° C) for 450 Hours (500X, Unetched)	
Figure 9 - Photomicrographs; Microstructures Within the Bottom Two-Thirds of the BC21 Coated Rene 80 Test Pins Exposed at 1300° F (704° C) for 950 Hours (500X, Unetched)	
Figure 10 - Electron Micrographs; SEM-EDXA Analysis of BC21 Coated Rene 80 Test Pin Exposed at 1300° F (704° C) for 450 Hours	
INITIAL DISTRIBUTION	

## ABSTRACT

Low-velocity burner-rig tests were conducted at four temperatures: 1200° F\* (649° C), 1300° F (704° C), 1400° F (760° C) and 1550° F (844° C) in an attempt to simulate the low-temperature (circa 1300° F (704° C)) attack that is occurring on marine gas turbine hot section components. The tests were made by exposing CoCrAlY-coated Rene 80 test pins to a burner-rig environment burning marine diesel fuel containing 1 weight percent S at a 30 to 1 air-to-fuel ratio. The test environment contained 5 parts per million sea salt at 1200° F (649° C) and 10 parts per million at the other three temperatures. At 1200° F (649° C) and 1400° F (760° C) after 750 hours, there was little or no hot-corrosion attack. At 1550° F (844° C) after 750 hours, typical high-temperature, hot-corrosion attack had occurred. At 1300° F (704° C) low-temperature, hot-corrosion attack was duplicated within 450 hours. The occurrence of low-temperature attack was found to be related to the presence of  $\text{CoSO}_4$ .

## INTRODUCTION

Operation of main propulsion marine gas turbine engines at low or intermediate power levels results in relatively low temperatures on the blade metal. In one such engine of interest to the Navy, the LM2500, operation at low power (12,000 horsepower or less) results in blade metal temperatures of 1100° to 1350° F (593° to 732° C).<sup>1</sup> At these temperatures, hot-corrosion attack on the CoCrAlY coated first-stage turbine blades on the LM2500 powered GTS Callaghan has been reported<sup>1</sup> to be occurring at rates equal to or greater than those at high-power, high-temperature operation. Since the LM2500 powered DD963 class destroyers operate at low or intermediate power levels over 80% of the time,<sup>2</sup> low-temperature, hot-corrosion attack can have a detrimental effect on engine performance.

\*Definitions of abbreviations used in this text are given on page i.

<sup>1</sup>Superscripts refer to similarly numbered entries in the Technical References at the end of the text.

The morphology of high-temperature (circa 1700° F (926° C)) hot-corrosion attack of CoCrAlY coatings is characterized by depletion of aluminum from the coating to form Al<sub>2</sub>O<sub>3</sub>.<sup>1</sup> This causes a layer depleted of the aluminum-rich beta phase to form beneath the oxide/coating interface. As the attack progresses, a network of Al<sub>2</sub>O<sub>3</sub> and depleted coating forms. The cobalt and chromium in the remaining portions of depleted coating are oxidized at the surface which completes the degradation of the coating. Sulfides do not appear in the depletion zone until the aluminum-rich phase is completely consumed.

With low temperature (circa 1300° F (704° C)) hot corrosion aluminum depletion does not occur.<sup>1</sup> Instead there is almost uniform conversion to oxide scales of all coating constituents at about the same rate. There is, however, some chromium depletion beneath the scale/coating interface.<sup>1</sup> The scale in contact with the coating is high in aluminum and chromium and low in cobalt. Frequently, a loosely adherent outer scale rich in cobalt is formed over this inner scale. Sulfur is found in the scale particularly at the scale/coating interface.<sup>1</sup>

As part of any development of a coating that can resist low-temperature as well as high-temperature attack, a laboratory test that can duplicate this engine attack must be developed. Once this is done, it is then possible to screen promising coatings for their resistance to both temperature levels of hot-corrosion attack. Such an approach can reduce the amount of expensive engine testing needed to qualify coatings for Fleet use. Since test procedures already exist to duplicate high-temperature hot corrosion, the objective of this work was to develop a test that can simulate low-temperature hot corrosion in the laboratory.

## EXPERIMENTAL PROCEDURE

### MATERIALS

Pins 1/8 inch (0.32 cm) in diameter by 1 1/2 inches (3.8 cm) long of nickel-base superalloy Rene 80 were tested with a CoCrAlY coating. The Rene 80 was in the equiaxed, conventionally cast form. The CoCrAlY coating was applied by physical vapor deposition and had a nominal thickness of 0.005 inch (0.127 mm). The particular CoCrAlY coating tested was of the BC21 composition developed by the General Electric Company. This coating/substrate combination was selected since this is the same combination used for the first-stage, high-pressure turbine blades of the LM2500 powered, DD963 class destroyers. Coated pins from two suppliers were used for these tests. Pins from supplier A were used in the 1400° F (760° C) burner-rig run described below while pins from supplier B were used in the other three burner-rig runs. The chemical compositions of Rene 80 and BC21 are shown in table 1.

Table 1  
CHEMICAL COMPOSITION OF RENE 80 AND BC21

Material Designation	Composition, wt %										
	Ni	Co	Cr	Al	Y	Ti	W	Mo	C	B	Zr
Rene 80 (nominal composition)	Bal	9.5	14.0	3.0	-	5.0	4.0	4.0	0.17	0.015	0.03
BC21 (specification range)	-	Bal	20/26	11/13	0.1/0.5	-	-	-	-	-	-

#### BURNER-RIG TESTS

The test pins described above were exposed to the hot-corrosion environment in a low-velocity, atmospheric-pressure burner rig. The operation of the burner rig has been previously described.<sup>3</sup> A diagram of the apparatus cross section is shown in figure 1. Four gas-stream temperatures were selected for these tests: 1200° F (649° C) and 1300° F (704° C) as these are temperatures within the range associated with low-temperature attack of LM2500 first-stage, high-pressure turbine blades on the TS Callaghan,<sup>1</sup> and 1400° F (760° C) and 1550° F (844° C) as these are the temperatures which the Admiralty Materials Laboratory<sup>2</sup> and the Cranfield Institute of Technology<sup>5</sup> in England, respectively, associate with the maximum rate of low-temperature attack. The other significant test parameters for each gas-stream temperature are listed as follows:

- ASTM sea salt in air concentration - 5 p/m at 1200° F (649° C)  
10 p/m at the other three temperatures
- Fuel - Marine diesel, 1 wt % S
- Air/fuel ratio - 30/1
- Total test duration - 950 hours at 1300° F (704° C)  
750 hours at the other three temperatures
- Thermal cycling - Every 100 hours to room temperature in still air, with 1 cycle of 50 hours

The sulfur content of the fuel is purposely raised to 1 wt % by adding tertiary butyl disulfide. Two BC21-coated pins were exposed at each temperature. One specimen was removed after 450 to 500 hours of exposure. If the attack was negligible after this time, the other BC21-coated pin was exposed for an additional 250 hours. If there was significant attack after 400 to 500 hours, testing was continued until it was estimated that the BC21 coating would be penetrated through to the Rene 80.

High-purity platinum pins, 1/8 inch (0.32 cm) diameter by 3/4 inches (1.9 cm) long, were exposed along with the BC21-coated pins to measure the amount of salt deposited during each of the four burner-rig runs. The platinum pins were weighed before and after exposure, and the weight gain was then normalized to the area exposed. These data should be considered as an approximation of the amount of salt deposited on the pin, as some can flake or spall off with thermal cycling.

Surface temperature measurements on a test pin were made at a gas-stream temperature of 1300° F (704° C) under the same conditions as for the 1300° F (704° C) burner-rig run but without salt. The test pin used was a cobalt-base superalloy, X-40, and was 1/8 inch (0.32 cm) in diameter by 1 1/2 inches (3.8 cm) long. Platinum-platinum 10% rhodium thermocouples were attached to the top and bottom of the test pin as shown in figure 2. The surface temperatures at these points were then recorded for 24 hours while the carousel and pin rotated in the burner rig.

#### EVALUATION

After testing, the BC21 pins from the 1300° F (704° C), 1400° F (760° C), and 1550° F (844° C) runs were washed with distilled water. The water wash from each pin was then analyzed for cobalt, sodium, and iron. Water-soluble cobalt is an indicator of the presence of  $\text{CoSO}_4$ ; iron is an indicator of ferric sulfate contamination or formation in the burner-rig environment; sodium is an indicator of salt deposition. The washes from several of the pins were also analyzed for chloride, sulfate, magnesium, and calcium, all of which are constituents of sea salt. The cobalt, sodium, magnesium, calcium, and iron analyses were performed by atomic absorption. The chloride and sulfate analyses were performed by standard titration techniques.

The salt deposited on the platinum pins was removed by soaking the pins in distilled water. The water was then evaporated, leaving a salt residue. This salt and the loosely adherent scale which formed on the BC21 pins from the 1300° F (704° C) run were analyzed by X-ray-diffraction techniques.

The BC21 pins were sectioned and prepared for metallography and scanning electron microscopy after the distilled water washing. The specimens were mounted in a copper-bearing material to which silicon nitride was added to aid in edge retention. Finally, the specimens were ground through 600-grit silicon carbide paper and then polished through 0.25  $\mu\text{m}$  diamond.

## RESULTS AND DISCUSSION

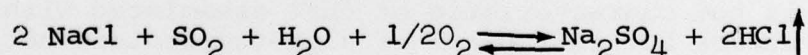
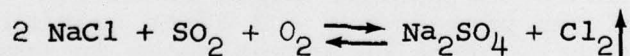
### 1200° F (649° C) AND 1400° F (760° C) RIG RUNS

The pins exposed to the burner-rig tests at 1200° F (649° C) and 1400° F (760° C) underwent very little if any hot-corrosion attack. This is evident from the condition of the pins before and after exposure, as shown in figure 3. Significant hot-corrosion attack failed to occur even with the appreciable deposition of salt at each of the temperatures. Specifically, the amount of salt deposited on the platinum pins as listed in table 2 was 6.2 mg/cm<sup>2</sup> in 750 hours at 1200° F (649° C) and 24 mg/cm<sup>2</sup> in 750 hours at 1400° F (760° C). X-ray diffraction of the deposits on the platinum pins showed the salt to be Na<sub>2</sub>SO<sub>4</sub>; NaCl was not found in these deposits.

TABLE 2  
AMOUNT OF SALT DEPOSITED ON PLATINUM PINS

Temperature	Amount of Salt Deposited for Time Shown		
1200° F (649° C)	0.94 mg/cm <sup>2</sup> in 100 hours	3.6 mg/cm <sup>2</sup> in 500 hours	6.2 mg/cm <sup>2</sup> in 750 hours
1300° F (704° C)	-	8.8 mg/cm <sup>2</sup> in 450 hours	-
1400° F (760° C)	-	14.4 mg/cm <sup>2</sup> in 500 hours	24 mg/cm <sup>2</sup> in 750 hours
1550° F (844° C)	3.9 mg/cm <sup>2</sup> in 200 hours	7.5 mg/cm <sup>2</sup> in 400 hours	-

It should not be inferred from this result and those to be presented later that NaCl was not deposited on the platinum pins or CoCrAlY specimens. NaCl can be deposited by condensation from the vapor state or by impaction of solid salt particles.<sup>6,7</sup> However, once deposited, the NaCl has been found to survive only for very short periods of time; it can be vaporized from the surface or converted to Na<sub>2</sub>SO<sub>4</sub>. Shores, et al,<sup>8</sup> propose the reaction for this conversion with constituents in the combustion gas as follows:



Thus, conversion to sulfate and/or evaporation would account for the removal of NaCl from the deposit.

The 1200° F (649° C) pins were not water washed. The results of the water wash from the CoCrAlY pins exposed at

1400° F (760° C) showed major amounts of Na and SO<sub>4</sub>, minor amounts of Ca and Mg, and little or no Fe, Co, and Cl (see table 3). These results agree with the X-ray determination of Na<sub>2</sub>SO<sub>4</sub> as the major salt found on the platinum pins. The fact that cobalt was not found in significant quantities in the 1400° F (760° C) water wash is important and will be discussed in greater detail along with the 1300° F (704° C) burner-rig results.

TABLE 3  
ANALYSIS OF WATER WASH

Temperature	Time, hours	P/M						
		Cc	Fe	So <sub>4</sub> (1)	Na	Ca	Mg	Cl(1)
1300° F (704° C)	500(2)	4.35	0.11	(4)	5.4	(4)	(4)	(5)
	950(2)	1.68	0.00	(4)	28.0	(4)	(4)	0
1400° F (760° C)	500(3)	0.19	0.00	58	27.5	(4)	(4)	1.2
	750(3)	0.12	0.02	119	44.8	2.5	0.9	0
1550° F (844° C)	500(3)	0.00	0.00	46	14.1	0.1	0.0	0
	750(3)	0.05	0.04	184	66.8	0.6	0.7	0
Detection Limits		0.01	0.01	1	0.2	0.1	0.1	1

(1) Analysis of SO<sub>4</sub> and Cl by standard titration techniques, all others by atomic absorption.

(2) Original sample size 100 ml.

(3) Original sample size 250 ml.

(4) Not analyzed for.

(5) Chloride analysis contaminated.

#### 1550° F (844° C) RIG RUN

##### Macro and Micro Examination

The pins exposed to the 1500° F (844° C) burner-rig test underwent hot-corrosion attack. The attack was localized in nature, and after 750 hours the maximum depth of attack was two mils. The condition of the pins before and after testing is shown in figure 4. The hot-corrosion attack shown in item (b) of figure 4 is not characteristic of that associated with low-temperature attack but is typical of high-temperature hot corrosion. There is a layer within the coating beneath the oxide scale that is characterized by the absence of the aluminum-rich beta phase (grey phase) and which appears as a white layer on the photomicrograph (item (b) of figure 4). SEM-EDAX analysis (item (b) of figure 5) has shown this layer to be depleted of aluminum and rich in cobalt and chromium. The aluminum depletion is the result of the formation of an Al<sub>2</sub>O<sub>3</sub> oxide scale.<sup>1</sup>

The oxide fingers extending into the depletion layer itself are also rich in aluminum (item (c) of figure 5). Sulfide particles were found in advance of these oxide fingers, and SEM-EDAX analysis (items (d) and (e) of figure 5) showed these particles to be rich in sulfur and chromium with detectable amounts of aluminum and cobalt.

It should be noted that the CoCrAlY coating on the pins used in this burner-rig run (and the 1300° F (704° C) run) had, in the untested condition, a broad band of aluminum-rich beta phase located 0.001 to 0.002 inch (0.025 to 0.050 mm) from the coating/superalloy interface (item (a) of figure 4). After 750 hours at 1550° F (844° C) the microstructure of the coating was far more uniform with only a thin band of the beta phase still present (item (b) of figure 4). The hot-corrosion attack did not penetrate to this band during the test, and it is therefore not known whether this beta band would have accelerated or impeded the attack under the conditions of this 1550° F (844° C) burner-rig run.

#### Deposit Analysis

X-ray diffraction of the deposit on the platinum pins revealed  $\text{Na}_2\text{SO}_4$ . Once again NaCl was not found in the deposit. The amount of salt deposited was  $7.5 \text{ mg/cm}^2$  in 400 hours (see table 2).

The results of the water wash from the CoCrAlY pins exposed at 1550° F (844° C) showed significant Na and  $\text{SO}_4$  and little or no Co, Fe, Ca, Mg, or Cl. These results are similar to those for the 1400° F (760° C) run and agree with the X-ray determination of  $\text{Na}_2\text{SO}_4$  as the major salt found on the platinum pins. Once again cobalt was not found in significant quantities in the water wash, and this result will be discussed in greater detail along with the 1300° F (704° C) burner-rig run results.

#### 1300° F (704° C) RIG RUN

#### Macro Examination

The condition of the pins while still mounted in the carousel holder is shown in figure 6. A dark, loosely adherent oxide scale had formed at approximately 0.3 to 0.4 inch (0.7 to 1.0 cm) from the top of the pins. This loosely adherent scale was identified as  $\text{Co}_3\text{O}_4$  by X-ray diffraction. There was a sharply defined zone delineating this scale from the top-third of the pins, which to the unaided eye, appeared to be relatively unattacked and had a spotty surface coloring of greenish blue. The substance giving this surface coloration was so thin and adherent that it could not be removed for conventional X-ray diffraction analyses. However, it can be said that it was not  $\text{CoSO}_4$  since  $\text{CoSO}_4$  is water soluble and this substance was not.

## Micro Examination

Metallographic examination and SEM-EDXA analysis of the pins from the 1300° F (704° C) burner-rig run revealed hot-corrosion attack that was typical of low-temperature engine attack. The degree of attack was found to change drastically along the length of the pins. In comparison to the microstructure of cross sections within the lower two-thirds of these pins (figures 8 and 9) the top-third of the pins underwent much less hot corrosion than the bottom two-thirds. In fact, the attack within the bottom two-thirds of the pins was quite advanced, with a depth of four mils after 450 hours (figure 8) and with almost complete penetration of the coating after 950 hours (item (b) of figure 9).

The morphology of the attack on the lower two-thirds of the pins (figures 8 and 9) was typical of low-temperature, hot-corrosion attack. Specifically, there is a thick scale in contact with both phases in the CoCrAlY coating. The aluminum-rich beta phase (grey phase) has not been depleted in advance of the attack front. At high magnifications (900X) it can be seen that the attack front is slightly advanced in the beta phase with the gamma phase quickly consumed thereafter (item (a) of figure 10). SEM-EDAX maps revealed sulfur concentrated along this advanced attack front (item (b) of figure 10). The scale in contact with the coating is rich in Cr and Al and low in Co (items (c), (d), and (e) of figure 10). Other scans, not shown in figure 10, revealed Co concentrated in the outer oxide scale which, as previously mentioned, was identified as  $\text{Co}_3\text{O}_4$ . Within the coating itself there is some evidence of chromium depletion (item (c) of figure 10) but none whatsoever of aluminum depletion (item (d) of figure 10), the latter being the chief feature of high-temperature, hot-corrosion attack.

A broad band of beta phase is present in these coatings tested at 1300° F (704° C), as shown in figure 7. This band located 0.001 to 0.002 inch (0.25 to 0.050 mm) from the coating/superalloy interface was also observed in the coatings tested at 1550° F (844° C), as shown in figure 4. The pins used in both these tests came from the same coating run or batch. Unlike the coatings tested at 1550° F (844° C), the microstructure of the coatings tested at 1300° F (704° C) did not become more uniform or homogeneous even after 950 hours. During the exposure at 1300° F (704° C), the hot corrosion attack did penetrate to this part of the coating on both pins. It is noteworthy that the attack has a nodular shape until it reached the beta band (figures 8 and 9). At this point the attack appears to proceed faster laterally than into the coating. It is possible that the beta band has slowed the attack. However, the beta band did not completely halt the attack as the coating was nearly penetrated in 950 hours (item (b) of figure 9).

## Deposit Analysis

As was found at the other three test temperatures, the salt on the platinum pins after exposure was  $\text{Na}_2\text{SO}_4$  without evidence of  $\text{NaCl}$ . As previously mentioned, it should not be inferred from these results that  $\text{NaCl}$  was not deposited on the pins. The amount of salt deposited on the platinum pins was  $8.8 \text{ mg/cm}^2$  in 450 hours (see table 2). The results of the water wash from the CoCrAlY pins showed significant Na and Co with little or no Cl or Fe. The presence of Co in the water wash is important as it is representative of the presence of water soluble  $\text{CoSO}_4$  on the surface of the pins, the formation of which has been theorized as the key to low-temperature attack.<sup>1</sup> This observation is consistent with the lack of low-temperature attack at  $1400^\circ \text{ F}$  ( $760^\circ \text{ C}$ ) and  $1550^\circ \text{ F}$  ( $844^\circ \text{ C}$ ) where appreciable Co was not found in the water wash. The  $1200^\circ \text{ F}$  ( $649^\circ \text{ C}$ ) pins were not water washed so a relationship cannot be drawn between the lack of attack at  $1200^\circ \text{ F}$  ( $649^\circ \text{ C}$ ) and the presence or absence of Co in the water wash.

## Temperature Distribution

Due to the sharply defined boundary separating regions of unattacked and attacked coating along the length of the pins, tests were made to determine the temperature distribution along the length of the pins. Such a temperature distribution, if found to encompass the decomposition temperature of  $\text{CoSO}_4$ , might explain the sharply defined regions. The surface temperatures on an X-40 dummy pin from top to bottom were determined at the most forward or hottest point in the burner rig with a gas-stream temperature of  $1300^\circ \text{ F}$  ( $704^\circ \text{ C}$ ) to be  $1320^\circ$  to  $1297^\circ \text{ F}$  ( $715^\circ$  to  $703^\circ \text{ C}$ ) after 6 hours and  $1314^\circ$  to  $1291^\circ \text{ F}$  ( $712^\circ$  to  $699^\circ \text{ C}$ ) after 24 hours at temperature. At the coldest point, 180 rational degrees from the hottest point, the temperature distribution from top to bottom was  $1297^\circ$  to  $1284^\circ \text{ F}$  ( $703^\circ$  to  $696^\circ \text{ C}$ ) after 6 hours and  $1291^\circ$  to  $1272^\circ \text{ F}$  ( $699^\circ$  to  $689^\circ \text{ C}$ ) after 24 hours at temperature. These temperature distributions point to  $\text{CoSO}_4$  decomposition as an explanation for the attack pattern. Although the  $\text{CoSO}_4$  decomposition temperature is not precisely known under the dynamic gas environment in this burner rig, Ostroff and Sander-son<sup>9</sup> report the decomposition temperature as  $1306^\circ \text{ F}$  ( $708^\circ \text{ C}$ ) for a tube furnace air environment with flowing nitrogen, while Wortman et al<sup>1</sup> report the decomposition temperature as approximately  $1320^\circ \text{ F}$  ( $716^\circ \text{ C}$ ) for a gas turbine environment of 10 atm burning a diesel fuel with 0.7 wt % S. Thus, it is likely that the temperature distribution on the pins bracketed the  $\text{CoSO}_4$  decomposition temperature. If this is the case, then on surfaces with temperatures above the decomposition temperature (but too low for typical high-temperature hot corrosion), there should be little hot-corrosion attack, while on surfaces with temperatures at or near the decomposition temperature there should be noticeable hot corrosion. Indeed there was very little hot-corrosion

attack on the top-third of the pins, while on the bottom two-thirds of the pins there was noticeable low-temperature, hot-corrosion attack.

#### SUMMARY

Low-temperature, hot-corrosion attack occurring in marine gas turbines has been simulated by using a low-velocity, atmospheric-pressure burner rig. These results were achieved by exposing CoCrAlY coated Rene 80 to a gas-stream temperature of 1300° F (704° C). A 1 wt % S marine diesel fuel was burned with an air-to-fuel ratio of 30 to 1 while 10 p/m sea salt was injected into the burner rig. There was little or no attack during similiar tests at 1200° F (649° C) and 1400° F (760° C). Typical high-temperature, hot-corrosion attack occurred at 1550° F (844° C). The occurrence of low-temperature, hot-corrosion attack was found to be related to the presence of  $\text{CoSO}_4$ .

#### TECHNICAL REFERENCES

- 1 - Wortman, D.F., et al, "A Theory for Accelerated Turbine Corrosion at Intermediate Temperatures," 1976 Proceedings of the Conference on Gas Turbine Materials in a Marine Environment (20-23 Sep 1976)
- 2 - Comassar, S., and LCMR F.B. Lash, "The First Years Operating Experience - GE LM2500 Gas Turbine in USS SPRUANCE (DD-963)" ASME Gas Turbine Conference and Products Show, Paper No. 77GT107, Philadelphia, PA (27-31 Mar 1977)
- 3 - Doeing, H. von E., and P. Bergman, "Construction and Operation of a Hot Corrosion Test Facility," Materials Research and Standards, Vol. 9, No. 9, p. 135 (Sep 1969)
- 4 - Open Discussion Remarks during the Conference on Gas Turbine Materials in a Marine Environment (20-23 Sep 1976)
- 5 - Open Discussion Remarks during the Conference on Gas Turbine Materials in a Marine Environment (20-23 Sep 1976)
- 6 - Bishop, R.J., "The Formation of Alkali-Rich Deposits by a High-Chlorine Coal," J. Institute of Fuel, Vol. 41, pp. 51-65 (Feb 1968)
- 7 - Conde, J.F.G., "The Separate and Interacting Roles of Sulphur, Sodium and Chloride in Hot Corrosion," AGARD Conf. Proc. No. 120 on High Temperature Corrosion of Aerospace Alloys, pp. 203-219 (10-12 Apr 1972)
- 8 - Shores, D.A., et al, "The Effects of NaCl on High Temperature Hot Corrosion," Proc. of Symposium on Properties of High Temperature Alloys, Electrochemical Society Meeting (Oct 1976)
- 9 - Ostroff, A.G., and Sanderson, R.T., "Thermal Stability of Some Metal Sulphates," J. Nucl. Chem., Vol. 9, pp. 45-50 (1959)



- 1 - Thermocouple Attachment
- 2 - X-40 Pin

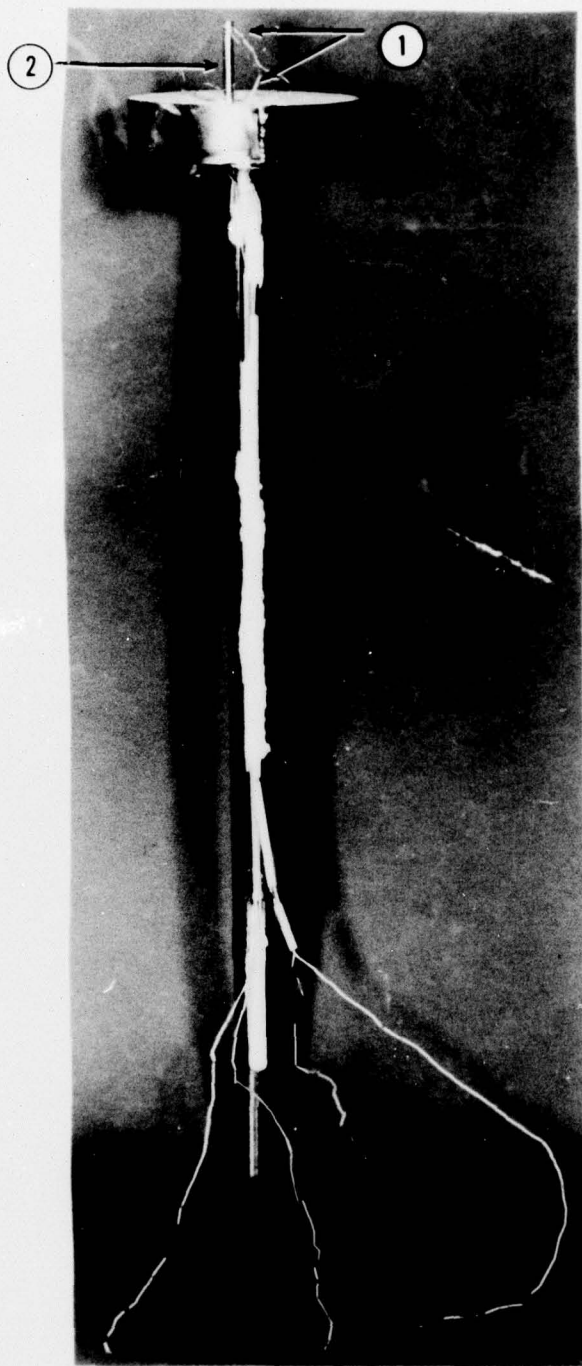
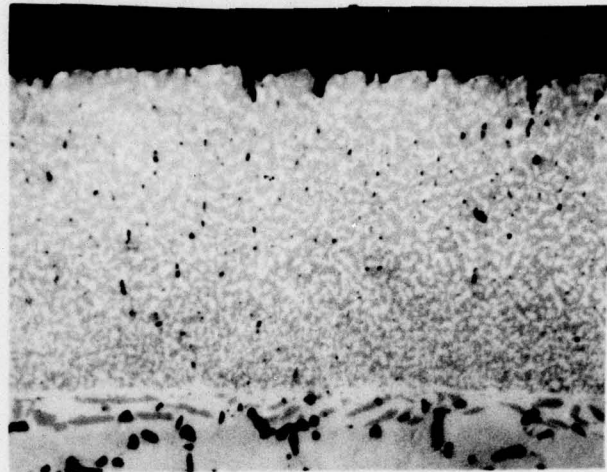
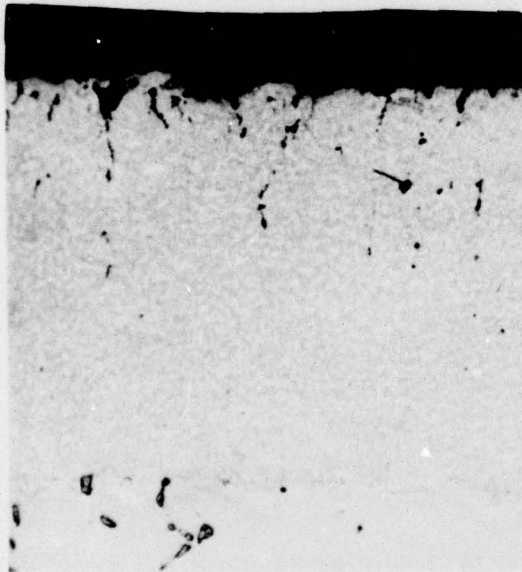


Figure 2  
Thermocouple Location for  
Surface Temperature Measurements

Item (a) - As-Coated  
(350X, Unetched)



Item (b) - 1200° F (649° C)  
(500X, Unetched)



Item (c) - 1400° F (760° C)  
(500X, Unetched)

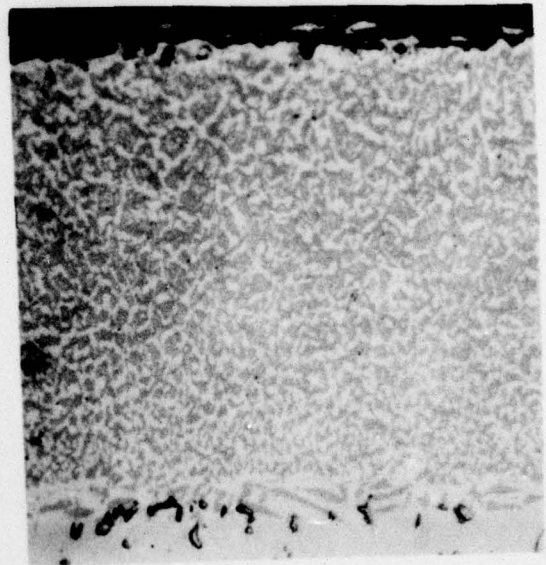
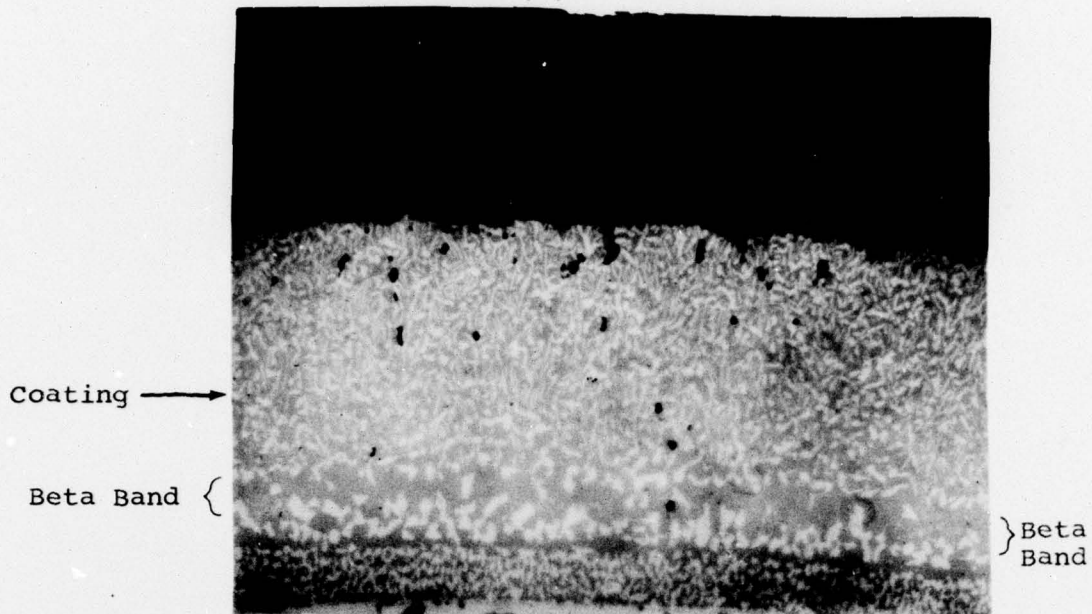


Figure 3  
BC21 Coated Rene 80 Test Pins As-Coated and After Exposure  
at 1200° F (649° C) and 1400° F (760° C) for 750 Hours

MAT-77-68

Item (a) - As-Coated



Item (b) - 1550° F (844° c)

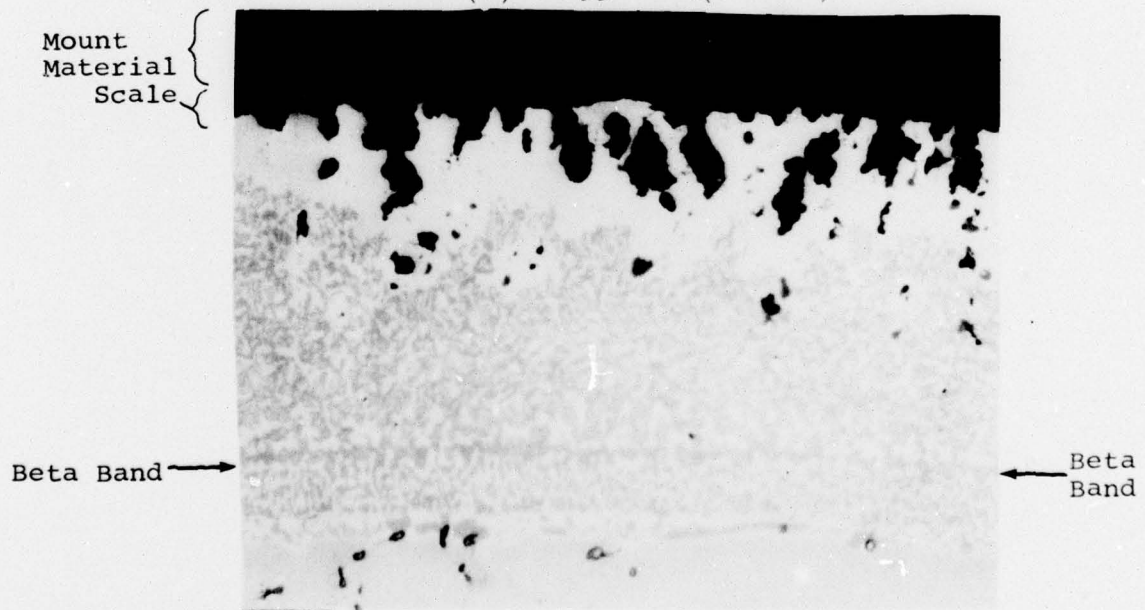
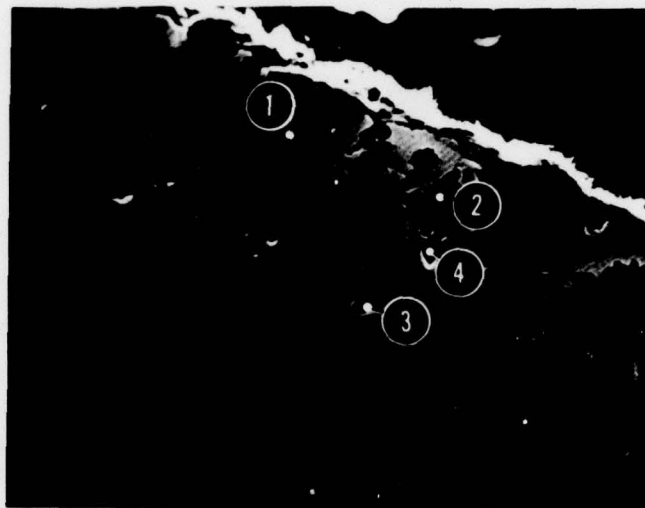


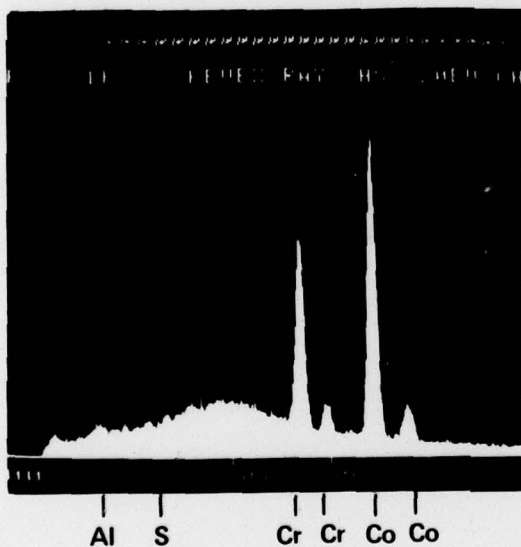
Figure 4  
BC21 Coated Rene 80 Test Pins As-Coated  
and After Exposure at 1550° F (844° C)  
for 750 hours (500X, Unetched)

MAT-77-68

Item (a) - Secondary Election  
Image of item (b) of Figure 4  
(500X)



Item (b)  
Point Analysis Spot 1



Item (c)  
Point Analysis Spot 2

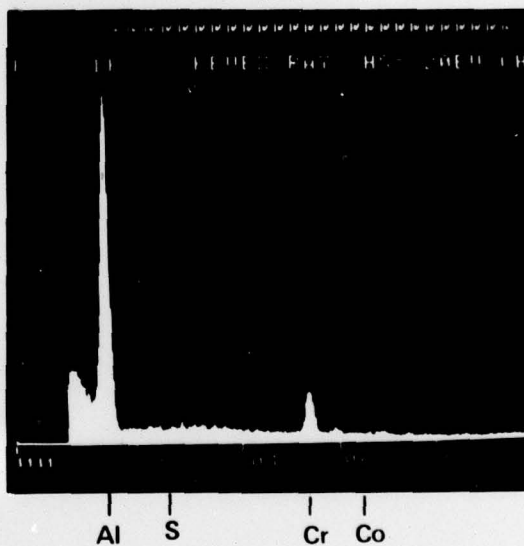
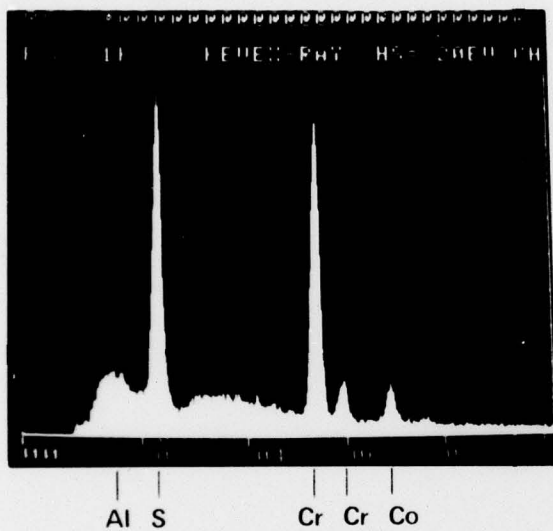


Figure 5  
SEM-EDXA Analysis of BC21 Coated Rene 80  
Test Pin After 750 Hours at 1550° F (844° C)

Item (d)  
Point Analysis Spot 3



Item (e)  
Point Analysis Spot 4

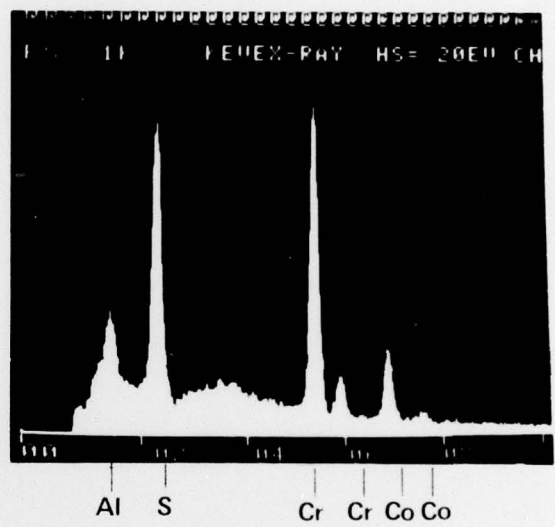


Figure 5 (Cont)

- 1 -  $\text{Co}_3\text{O}_4$  Oxide Scale
- 2 - Platinum

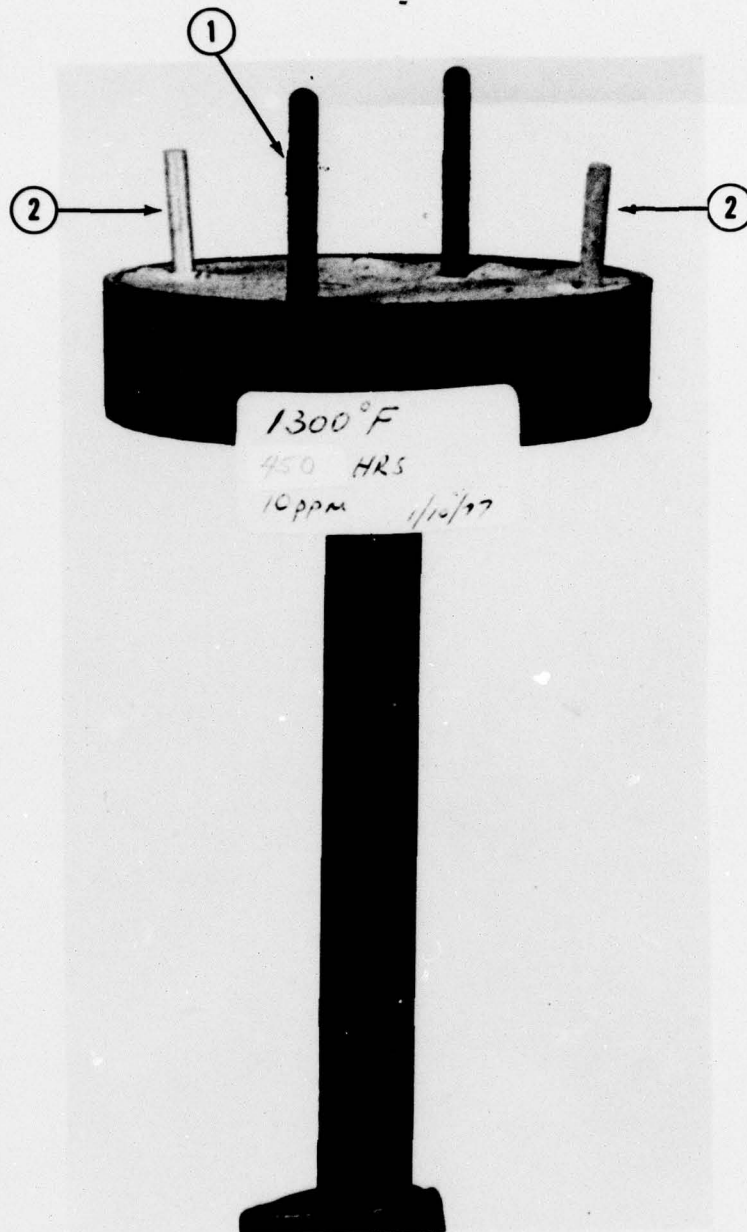


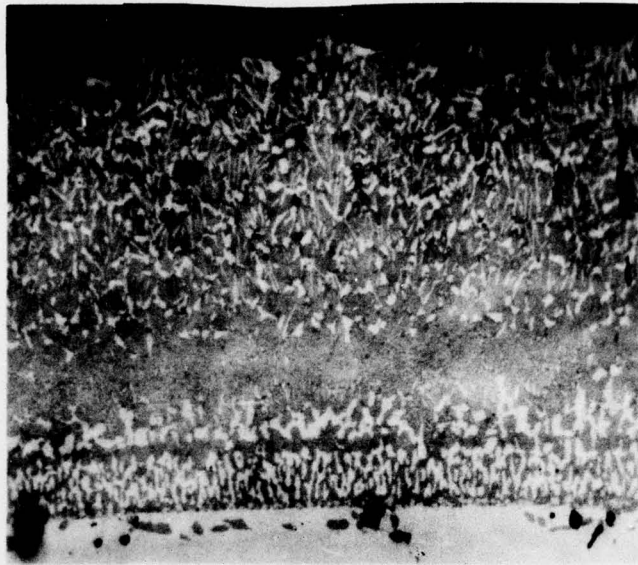
Figure 6 - Platinum Pins and BC21-Coated Rene 80 Pins After 450 Hours at 1300° F (704° C) (1X)

MAT-77-68

Item (a) - 450 Hours

Mount Material {

Beta  
Band {



Item (b) - 950 Hours

Mount Material {

Beta  
Band {

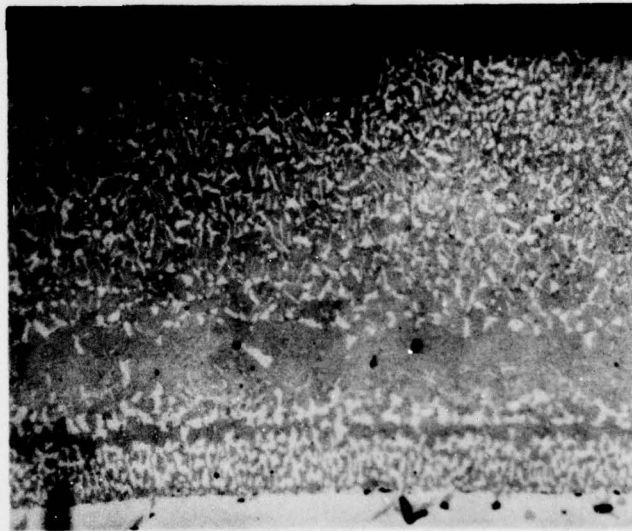


Figure 7  
Microstructures Within the Top-Third of BC21 Coated  
Rene 80 Test Pins Exposed at 1300° F (704° C)  
(500X, Unetched)

MAT-77-68

Oxide Scale

Mount Material

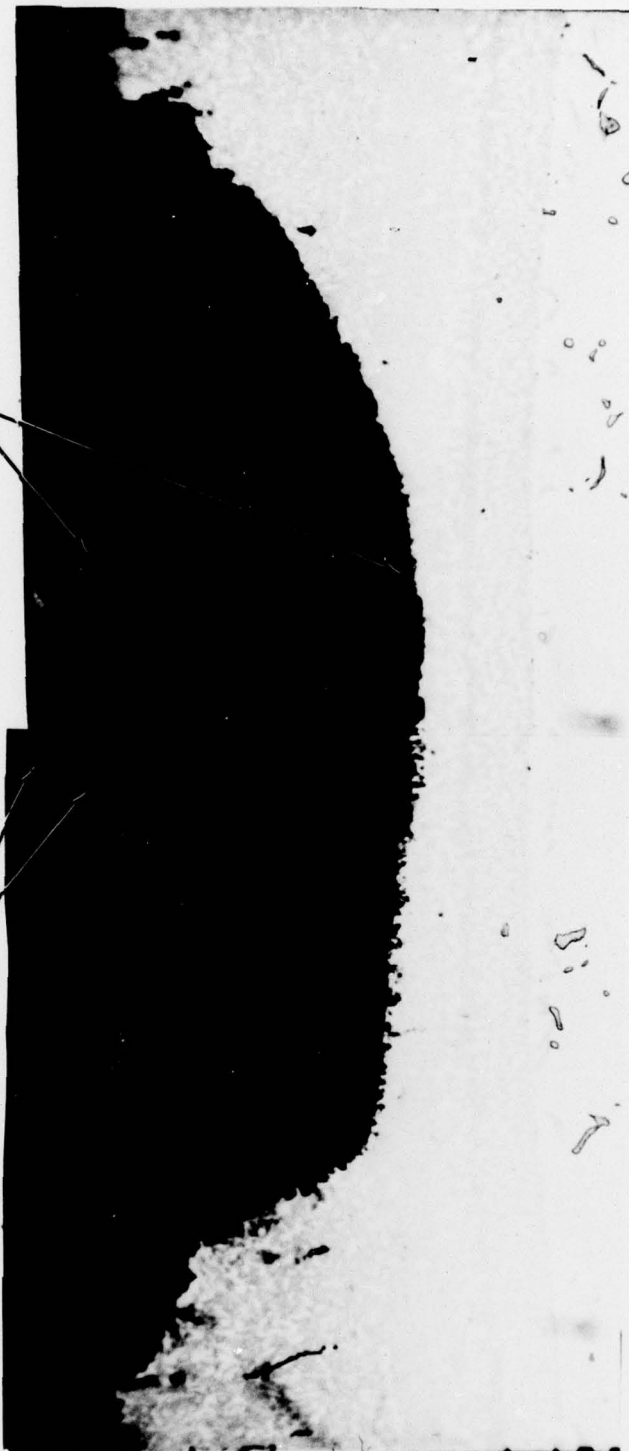
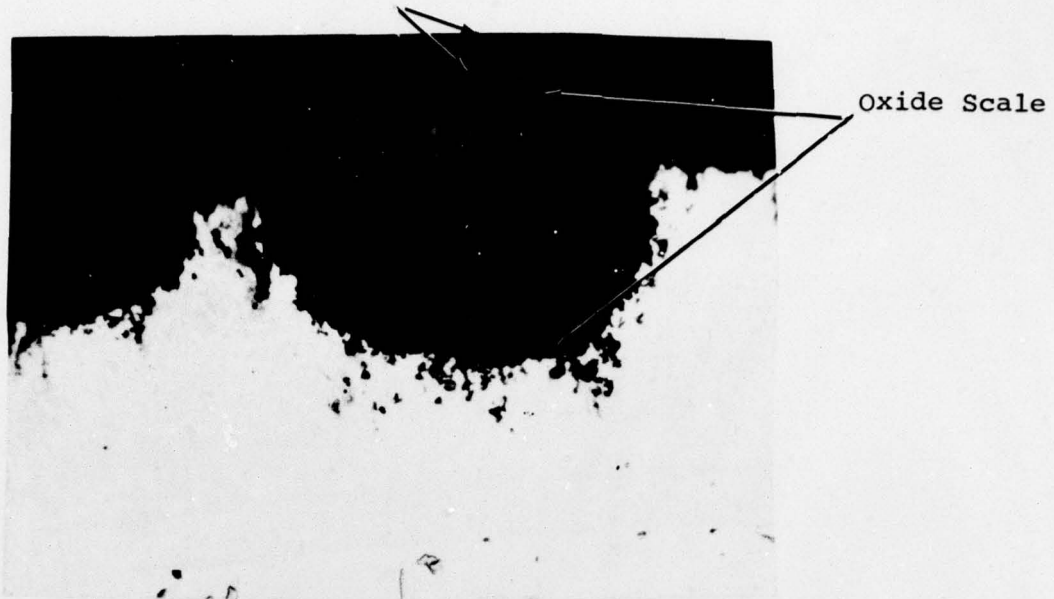


Figure 8 - Microstructure Within the Bottom Two-Thirds of the BC21 Coated Rene 80 Test Pin Exposed at 1300° F (704° C) for 450 Hours (500X, Unetched)

Item (a)

Mount Material



Item (b)

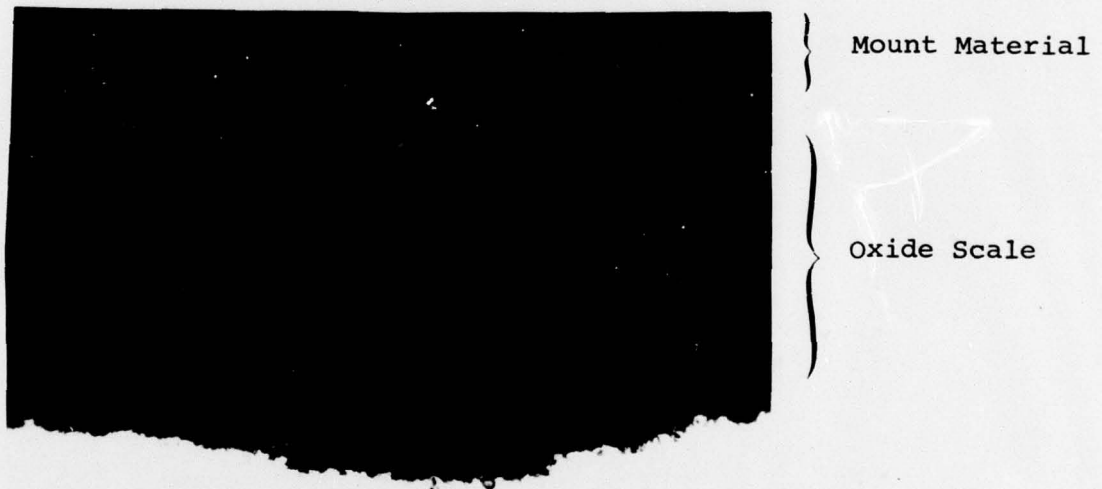
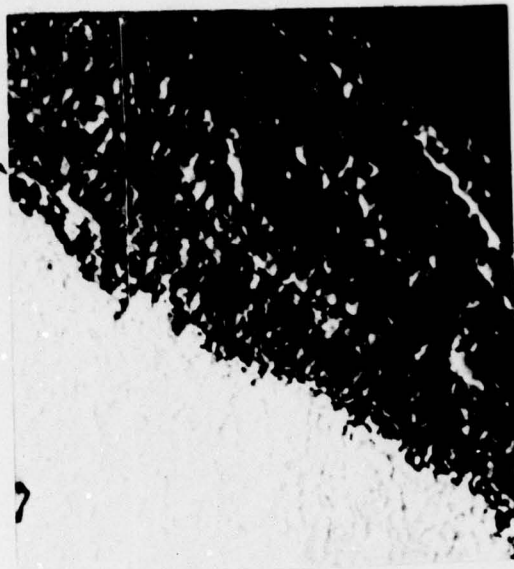


Figure 9 - Microstructures Within the Bottom Two-Thirds  
of the BC21 Coated Rene 80 Test Pin Exposed  
at 1300° F (704° C) for 950 Hours  
(500X, Unetched)

MAT-77-68



Item (a) - Back Scattered  
Electron Image (900X)

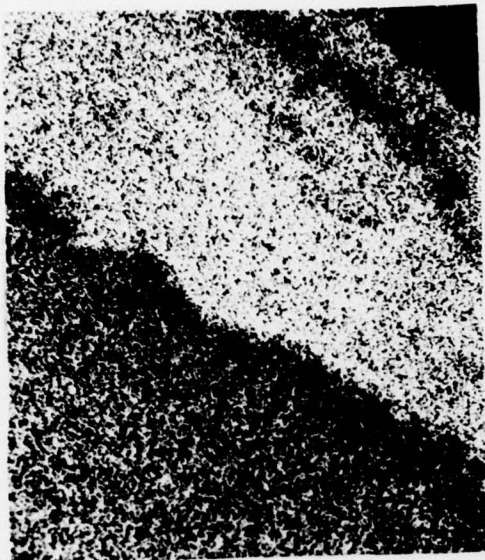
Oxide/Coating Interface

Item (b)  
Sulfur X-Ray Scan



Figure 10 - SEM-EDXA Analysis of BC21 Coated Rene 80  
Test Pin Exposed at 1300° F (704° C) for 450 Hours

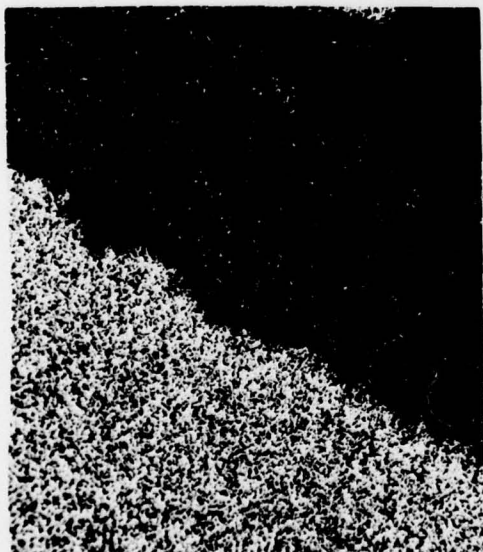
MAT-77-68



Item (c) - Chromium X-Ray Scan



Item (d) - Aluminum X-Ray Scan



Item (e) - Cobalt X-Ray Scan

Figure 10 (Cont)

INITIAL DISTRIBUTION

Copies		CENTER DISTRIBUTION	
		Copies	Code
1	NRL Code 6170		
6	NAVSEA		
	1 SEA 03C	1	2721
	2 SEA 0331G*		
	1 SEA 03523	1	281
	2 SEA 09G32	15	2812
10	NAVSEC		
	1 SEC 6101D	2	5231
	9 SEC 6146B	1	522.1
1	NAVSECPHILADIV Code 6763		
12	DDC		

\*Addressee.

MAT-77-68, November 1977