

AD-A048 174

SCIENCE APPLICATIONS INC BERKELEY CALIF  
CALCULATION OF THE PER-UNIT LENGTH CAPACITANCE MATRIX FOR SHIEL--ETC(U)  
SEP 77 S CHANG, T K LIU, F M TESCHE

F/G 9/1

F29601-76-C-0125

UNCLASSIFIED

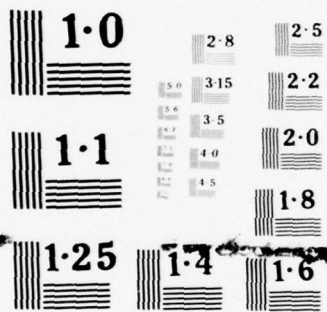
AFWL-TR-77-89

NL

| OF |  
ADA  
048174



END  
DATE  
FILMED  
1-78  
DDC



NATIONAL BUREAU OF STANDARDS  
 MICROCOPY RESOLUTION TEST CHART

2

fb

ADA048174

# CALCULATION OF THE PER-UNIT LENGTH CAPACITANCE MATRIX FOR SHIELDED INSULATED WIRES

Science Applications, Inc.  
Berkeley, CA 94701

September 1977

Final Report

Approved for public release; distribution unlimited.



AD No. \_\_\_\_\_  
DDC FILE COPY

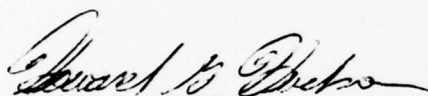
AIR FORCE WEAPONS LABORATORY  
Air Force Systems Command  
Kirtland Air Force Base, NM 87117

DDC  
RECEIVED  
DEC 21 1977  
B

This final report was prepared by Science Applications, Inc., Berkeley, California, under Contract F29601-76-C-0125, Job Order 12090513 with the Air Force Weapons Laboratory, Kirtland Air Force Base, New Mexico. Captain Howard Hudson, (ELP) is the Laboratory Project Officer-in-Charge.

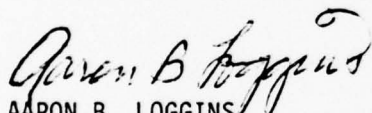
When US Government drawings, specifications, or other data are used for any purpose other than a definitely related Government procurement operation, the Government thereby incurs no responsibility nor any obligation whatsoever, and the fact that the Government may have formulated, furnished, or in any way supplied the said drawings, specifications, or other data is not to be regarded by implication or otherwise as in any manner licensing the holder or any other person or corporation or conveying any rights or permission to manufacture, use, or sell any patented invention that may in any way be related thereto.

This technical report has been reviewed and is approved for publication.

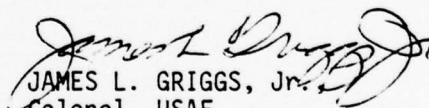


HOWARD G. HUDSON,  
Captain, USAF  
Project Officer

FOR THE COMMANDER



AARON B. LOGGINS,  
Lt Colonel, USAF  
Chief, Phenomenology & Technology Br



JAMES L. GRIGGS, Jr.,  
Colonel, USAF  
Chief, Electronics Division

This report has been reviewed by the Office of Information (OI) and is releasable to the National Technical Information Service (NTIS). At NTIS, it will be available to the general public, including foreign nations.

UNCLASSIFIED

SECURITY CLASSIFICATION OF THIS PAGE (When Data Entered)

REPORT DOCUMENTATION PAGE		READ INSTRUCTIONS BEFORE COMPLETING FORM
1. REPORT NUMBER AFWL-TR-77-89	2. GOVT ACCESSION NO.	3. RECIPIENT'S CATALOG NUMBER
4. TITLE (and Subtitle) 6. CALCULATION OF THE PER-UNIT LENGTH CAPACITANCE MATRIX FOR SHIELDED INSULATED WIRES.		5. TYPE OF REPORT & PERIOD COVERED 9. Final Report.
7. AUTHOR(s) 10. Shu-Kong/Chang, Tom K./Liu Frederick M. Tesche		6. PERFORMING ORG. REPORT NUMBER
8. PERFORMING ORGANIZATION NAME AND ADDRESS Science Applications, Inc. 17. 45 Berkeley, California 94701		8. CONTRACT OR GRANT NUMBER(s) 15. F29601-76-C-0125
11. CONTROLLING OFFICE NAME AND ADDRESS Air Force Weapons Laboratory Kirtland Air Force Base, NM 87117		10. PROGRAM ELEMENT, PROJECT, TASK AREA & WORK UNIT NUMBERS 16. Program Element: 64747F JON 12090513 Proj: 1209
14. MONITORING AGENCY NAME & ADDRESS (if different from Controlling Office) Air Force Weapons Laboratory 12. 34p. Kirtland Air Force Base, NM 87117		12. REPORT DATE 11. September 1977
16. DISTRIBUTION STATEMENT (of this Report) Approved for public release; distribution unlimited.		13. NUMBER OF PAGES 28
17. DISTRIBUTION STATEMENT (of the abstract entered in Block 20, if different from Report) 18. AFWL, SBIE 19. TR-77-89, AD-E200 039		15. SECURITY CLASS. (of this report) Unclassified
18. SUPPLEMENTARY NOTES		
19. KEY WORDS (Continue on reverse side if necessary and identify by block number) Transmission Lines Capacitance of Transmission Line Capacitance Electromagnetic Pulse (EMP) Coupling to Transmission Lines		
20. ABSTRACT (Continue on reverse side if necessary and identify by block number) In this report, the per-unit-length capacitance matrix of a multiconductor transmission line enclosed in a shielding tube is calculated using the method of multiserries expansion. Each individual wire may be dielectric coated. The methods of evaluating the corresponding per-unit-length inductance matrix and the propagation matrix are also presented.		

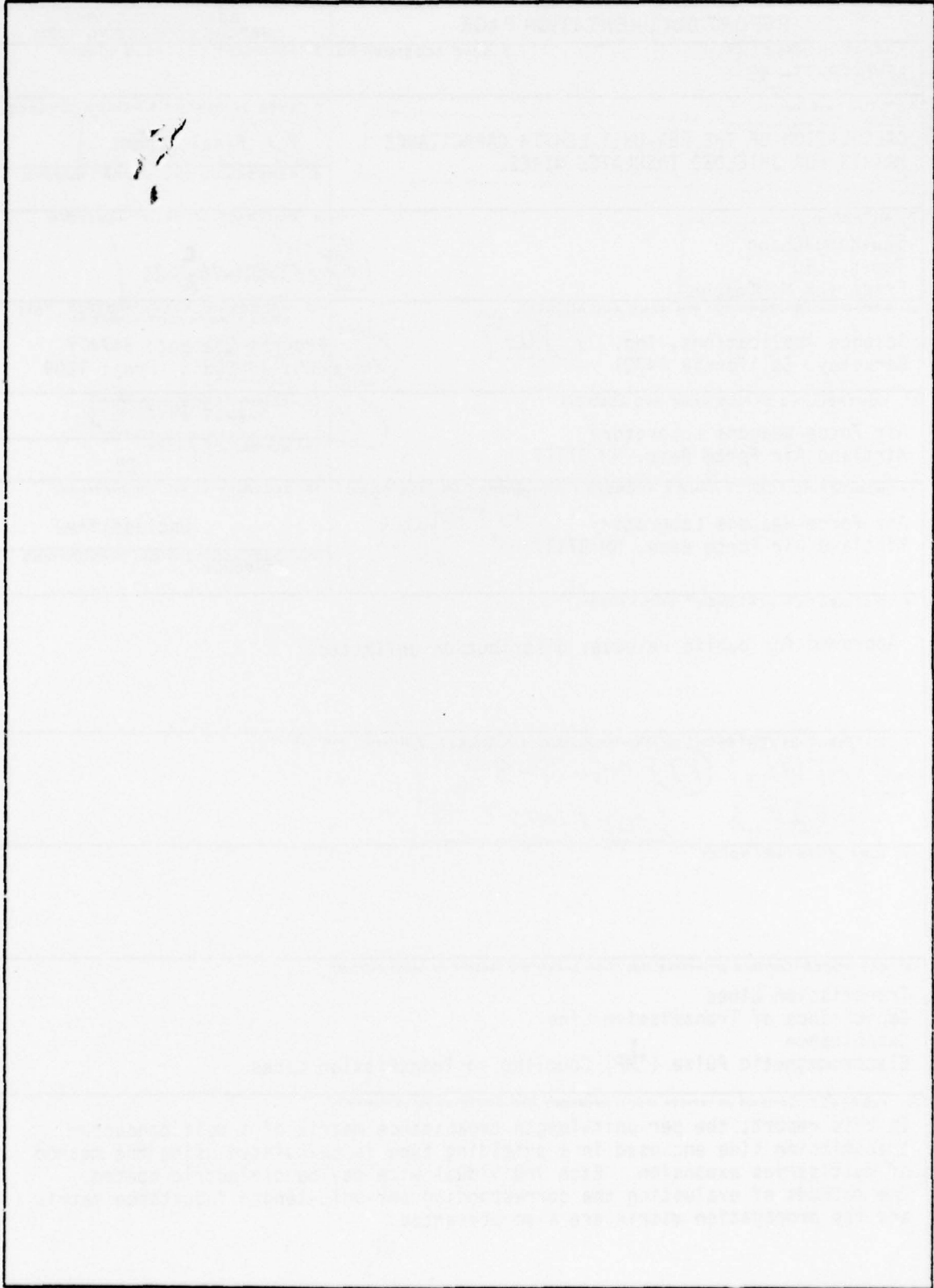
DD FORM 1 JAN 73 1473 EDITION OF 1 NOV 65 IS OBSOLETE

UNCLASSIFIED  
SECURITY CLASSIFICATION OF THIS PAGE (When Data Entered)

409694

1B

SECURITY CLASSIFICATION OF THIS PAGE(When Data Entered)



SECURITY CLASSIFICATION OF THIS PAGE(When Data Entered)

TABLE OF CONTENTS

<u>Section</u>		<u>Page</u>
	LIST OF FIGURES	2
I	INTRODUCTION	3
II	THEORY	7
	1. Single Wire Solutions	7
	2. The Multi-series Expansions	9
	3. Boundary Conditions	11
	4. The Per-Unit-Length Capacitance Matrix	13
III	CALCULATION OF THE EXPANSION COEFFICIENTS	15
IV	NUMERICAL RESULTS	18
V	CONCLUSIONS	25

ACCESSION for		
NTIS	White Section	<input checked="" type="checkbox"/>
DDC	Buff Section	<input type="checkbox"/>
UNANNOUNCED		<input type="checkbox"/>
JUSTIFICATION _____		
BY _____		
DISTRIBUTION/AVAILABILITY CODES		
Dist.	AVAIL.	and/or SPECIAL
A		

LIST OF FIGURES

<u>Figure</u>		<u>Page</u>
1	Configuration of the Shielded, Insulated Wires	4
2	Configuration for the Induction Theorem	8
3	The Equivalent System of Figure 1 after Using the Induction Theorem	10
4	a) A Coaxial Cable, b) Two Conducting Wires, c) Two Conducting Wires	19
5	Dielectric Coated Wires in a Grounded Tube	21

SECTION I  
INTRODUCTION

Cables containing many wires have been widely used for signal transmission within large systems. Recently, the effects of electromagnetic pulse (EMP) have drawn much attention to the studies of effective shielding techniques for such multiconductor cables. A practical shielding structure for these cables is a grounded conducting tube, as shown in Figure 1. In order to study the mutual coupling of the wires in the presence of the grounded shield, the per-unit-length capacitance matrix, which determines the "quasi-TEM" transmission line solutions (ref. 1, 2, 3), must be obtained.

The purpose of this report is to demonstrate a numerical method which calculates the per-unit-length capacitance matrix

- 
1. F.Y. Chang, "Transient Analysis of Lossless Coupled Transmission Lines in a Nonhomogeneous Dielectric Medium," IEEE Trans. on Microwave Theory and Techniques, Vol. MTT-18, No. 9, pp. 616-626, September 1970.
  2. C.R. Paul, "On Uniform Multimode Transmission Lines," IEEE Trans. on Microwave Theory and Techniques, Vol. MTT-21, No. 8, pp. 556-558, August 1973.
  3. C.R. Paul, "Useful Matrix Chain Parameter Identities for the Analysis of Multiconductor Transmission Lines," IEEE Trans. on Microwave Theory and Techniques, Vol. MTT-23, No. 9, pp. 756-760, September 1975.

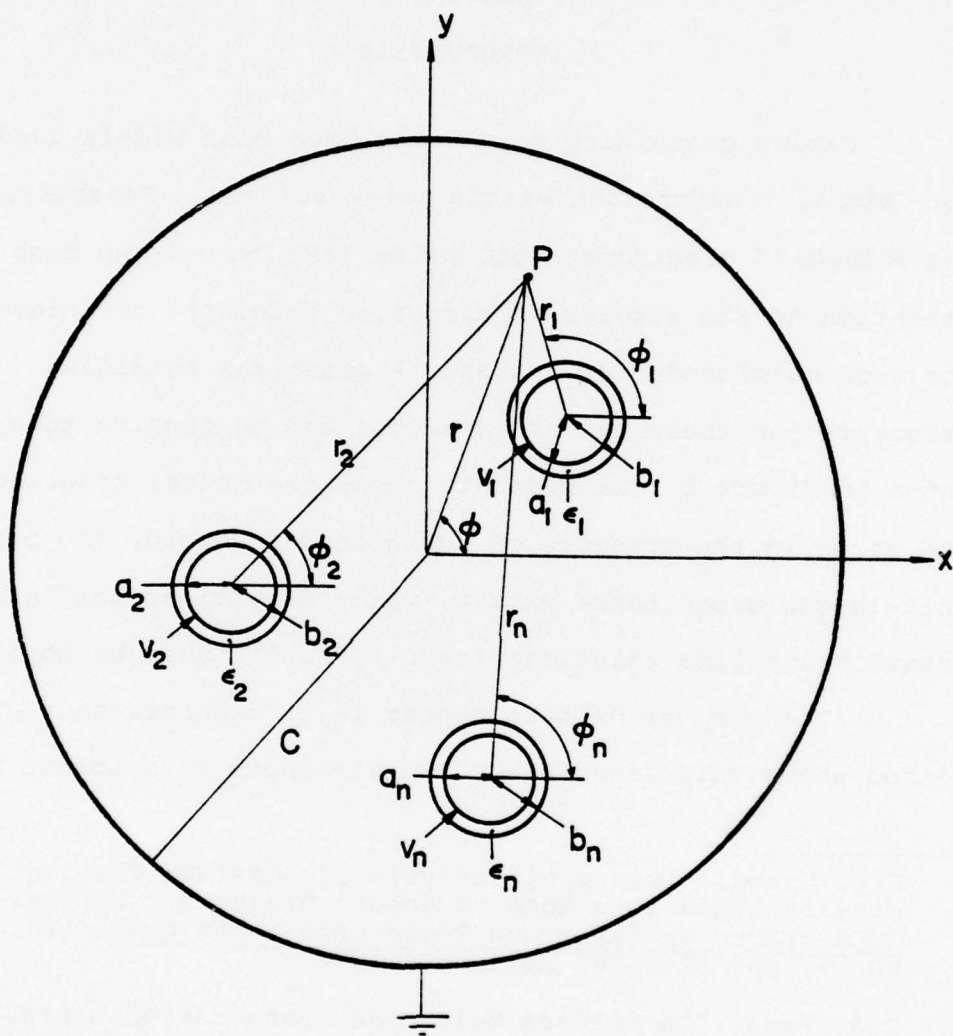


Figure 1. Configuration of the Shielded, Insulated Wires

(ref. 4, 5, 6) of the dielectric-coated wires in Figure 1. The  $i^{\text{th}}$  wire has a conducting core of radius  $a_i$ , the outer radius of the dielectric layer is  $b_i$ , the relative dielectric constant is  $\epsilon_i$ , with the value of  $i = 1, 2, \dots, n$ . The total number of wires is  $n$ . The center of the  $i^{\text{th}}$  wire is  $(x_{ci}, y_{ci})$ . The shielding tube has its center located at the origin  $(x_c = 0, y_c = 0)$  with a radius of  $c$ .

Theoretically, the problem can be solved by the conformal mapping technique (ref. 4, 5). However, the dielectric layer surrounding the wires makes the mapping very complicated. It is also possible to solve the problem using the method of successive images (ref. 4, 7). Again the process of images involving the dielectric coatings is not simple, and the imaging is very tedious if many wires are involved.

- 
4. R. Plonsey and R. Collin, Principles and Applications of Electromagnetic Fields, McGraw-Hill Co., New York (1961), p. 71.
  5. E. Weber, Electromagnetic Fields - Theory and Applications, Vol. 1 - Mapping of Fields, John Wiley and Sons, New York (1950), pp. 139, 223, 226, 379.
  6. J.C. Clements, C.R. Paul, A.T. Adams, "Computation of the Capacitance Matrix for Systems of Dielectric-Coated Conductors," IEEE Trans. on Electromagnetic Compatibility, Vol. EMC-17, No. 4, pp. 238-248, November 1975.
  7. M.P. Sarma and W. Janischewskj, "Electrostatic Field of a System of Parallel Cylindrical Conductors," IEEE Trans. on Power Apparatus and Systems, Vol. PAS-88, No. 7, pp. 1069-1079, July 1969.

Recently, the integral equations (ref. 8) and the method of moments (ref. 6, 9, 10, 11, 12) have been applied to solve the capacitance matrix for a system of multiconductor wires. The accuracy and numerical stability of the point-matching technique employed in references (6) and (12) are sensitive to the points chosen for matching the boundary conditions. In addition, there is no systematic way of selecting the match points when the wires are randomly scattered.

In this report, we shall provide a theoretical background for the "multi-series expansion" of the potential exterior to the dielectric coatings. The coefficients in this expansion will be solved by the "weighted least-square method" and the per-unit-length capacitance matrix is then obtained directly from the expansion coefficients.

- 
8. P.C. Chestnut, "On Determining the Capacitances of Shielded Multiconductor Transmission Lines," IEEE Trans. on Microwave Theory and Techniques, Vol. MTT-17, No. 10, pp. 734-745, October 1969.
  9. R.F. Harrington, Field Computation by Moment Methods, MacMillan Co., New York (1968).
  10. A.T. Adams, Electromagnetics for Engineers, Ronald Press Co., New York (1972).
  11. M.P. Sarma, "Application of Moment Methods to the Computation of Electrostatic Fields - Part I - Parallel Cylindrical Conductor Systems," IEEE PES Summer Meeting, San Francisco, California, July 9-14, 1972.
  12. A.E. Feather and C.R. Paul, Computation of the Capacitance Matrices for Ribbon Cables, RADC-TR-76-101, Vol. II, Rome Air Development Center, NY, April 1976.

## SECTION II

### THEORY

In this section we shall describe the field expansions in all regions of the multiconductor cable. The "multi-series expansion" will be derived to represent the potential exterior to the dielectric coatings. The per-unit-length capacitance matrix will be directly related to the expansion coefficients.

#### 1. Single Wire Solutions

Consider the conductor  $i$ , as in Figure 2a. The region  $R_i$  ( $a_i < r_i < b_i$ ) is filled with dielectric material with dielectric constant  $\epsilon_i$ . Outside the coating is the region  $R_o$  ( $r_i > b_i$ ) with dielectric constant  $\epsilon_o$ . According to reference (4), a complete solution of the electrostatic potential  $\psi_i$  in region  $R_i$  is

$$\psi_i = \sum_{m=1}^{\infty} (\alpha_{im} \cos m\phi_i + \beta_{im} \sin m\phi_i) (r_i^m + \gamma_{im} r_i^{-m}) + \alpha_{i0} \ln \frac{r_i}{a_i} + \beta_{i0} \quad a_i < r_i < b_i \quad (1)$$

In Figure 2b, the solution of the region  $R'_i$ , which has dielectric constant  $\epsilon_o$ , is

$$\psi'_i = \sum_{m=1}^{\infty} (\alpha'_{im} \cos m\phi_i + \beta'_{im} \sin m\phi_i) r_i^m + \beta'_{i0} \quad r_i < b_i \quad (2)$$

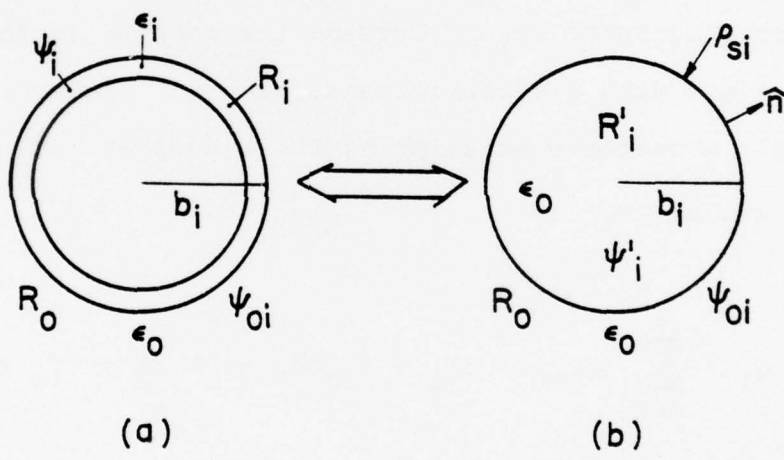


Figure 2. Configuration for the Induction Theorem

Hence the solution  $\psi_{oi}$  of region  $R_o$ , due to the  $i^{\text{th}}$  conductor, in both Figure 2a and Figure 2b is the same if the equivalent charge density

$$\rho_{si} = \frac{\partial}{\partial n} [\psi_i - \psi'_i]_{r_i=b_i} \quad (3)$$

The general expression of  $\psi_{oi}$  is

$$\begin{aligned} \psi_{oi} = & \sum_{m=1}^{\infty} (\eta_{im} \cos m\phi_i + \xi_{im} \sin m\phi_i) r_i^{-m} \\ & + \eta_{i0} \ln \frac{r_i}{b_i} + \xi_{i0} \end{aligned} \quad (4)$$

where  $\eta_{im}$  and  $\xi_{im}$  are the potential expansion coefficients for the exterior region,  $R_o$ . The equivalence of  $\psi_{oi}$  in both Figures 2a and 2b induced by the surface charge density  $\rho_{si}$  is due to the induction theorem as described in ref. (13).

## 2. The Multi-series Expansions

If the induction theorem discussed above is applied for the conductors  $i$ ,  $i = 1, 2, \dots, n$ , the solution exterior to the dielectric coatings of all the wires of Figure 1 is equivalent to that of Figure 3. The equivalent surface charge densities per-unit-length are  $\rho_{s1}, \rho_{s2}, \dots, \rho_{sn}$  on each dielectric surface and  $\rho_{s0}$  on the surface of the grounded tube. Hence, by using the superposition theorem (ref. 4), the complete expansion of the potential is

13. R.F. Harrington, Time-Harmonic Electromagnetic Fields, McGraw-Hill, New York (1961).

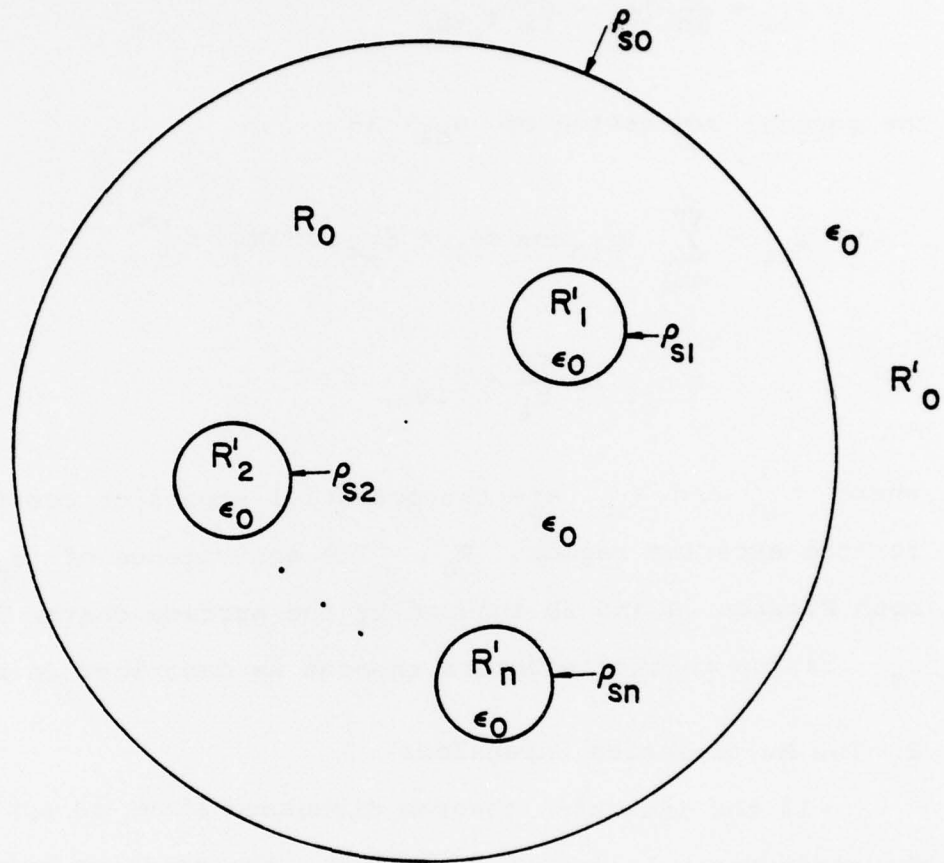


Figure 3. The Equivalent System of Figure 1 after Using the Induction Theorem

$$\begin{aligned}
\psi = & \sum_{i=1}^n \left[ \sum_{m=1}^{\infty} (\eta_{im} \cos m\phi_i + \xi_{im} \sin m\phi_i) r_i^{-m} \right. \\
& \left. + n_{i0} \ln \frac{r_i}{b_i} \right] + \sum_{m=1}^{\infty} (\eta_{om} \cos m\phi + \xi_{om} \sin m\phi) r^m \\
& + n_{o0} \ln \frac{r}{c} + \xi_{o0} \quad r_i > b_i, \quad r < c \quad (5)
\end{aligned}$$

where the constants  $\xi_{i0}$  are all absorbed in  $\xi_{o0}$ ; and  $r_i > b_i$  for all  $i = 1, 2, \dots, n$ ; and  $r < c$ .

In equation (5) the potential due to the first summation is associated with all the interior conductors, whereas that due to the second sum is associated with the shielding tube.

In addition, the potential in the dielectric coating region  $R_i$  of conductor  $i$  is given in equation (1) as

$$\begin{aligned}
\psi_i = & \sum_{m=1}^{\infty} (\alpha_{im} \cos m\phi_i + \beta_{im} \sin m\phi_i) (r_i^m + \gamma_{im} r_i^{-m}) \\
& + \alpha_{i0} \ln \frac{r_i}{a_i} + \beta_{i0} \quad (6)
\end{aligned}$$

where  $a_i < r_i < b_i$ ,  $i = 1, 2, \dots, n$ .

### 3. Boundary Conditions

On each conducting surface,  $r_j = a_j$ , the potential is  $V_j$ . That is

$$\begin{aligned}
[\psi_j]_{r_j=a_j} &= \sum_{m=1}^{\infty} (\alpha_{jm} \cos m\phi_j + \beta_{jm} \sin m\phi_j) (a_j^m + \gamma_{jm} a_j^{-m}) + \beta_{j0} \\
&= v_j \quad \text{for } 0 \leq \phi_j \leq 2\pi \quad (7)
\end{aligned}$$

Since equation (7) must hold for all  $0 \leq \phi_j \leq 2\pi$ , we have

$$\begin{aligned}
\gamma_{jm} &= -a_j^{2m} \quad ; \quad m = 1, 2, 3, \dots \\
&\quad \text{and } j = 1, 2, \dots, n \quad (8)
\end{aligned}$$

and

$$\beta_{j0} = v_j \quad ; \quad j = 1, 2, \dots, n \quad (9)$$

On each dielectric surface,  $r_j = b_j$ , the potential is continuous and the free charge is zero. Hence,

$$[\psi_j - \psi]_{r_j=b_j} = 0 \quad (10)$$

and

$$\left[ \epsilon_j \frac{\partial \psi_j}{\partial r_j} - \epsilon_0 \frac{\partial \psi}{\partial r_j} \right]_{r_j=b_j} = 0 \quad (11)$$

where  $\psi$  and  $\psi_j$  are given in equations (5) and (6) respectively.

On the grounded tube, the potential is grounded to zero,

$$[\psi]_{r=c} = 0 \quad (12)$$

One further condition is required to furnish the solution of the coefficients. This condition is obtained from the conservation of electric charges. That is

$$\int_0^{2\pi} \epsilon_0 \left[ \frac{\partial \psi}{\partial r} \right]_{r=c} d\phi = \sum_{i=1}^n \int_0^{2\pi} \left[ \epsilon_i \frac{\partial \psi_i}{\partial r_i} \right]_{r_i=a_i} d\phi_i \quad (13)$$

#### 4. The Per-Unit-Length Capacitance Matrix

Let the total free charge per-unit-length on the conductor  $i$  be  $Q'_i$ . Then

$$\begin{aligned} Q'_i &= - \int_0^{2\pi} \epsilon_i \left[ \frac{\partial \psi}{\partial r_i} \right]_{r_i=a_i} d\phi_i \\ &= -2\pi a_i \alpha_{i0} \epsilon_i \frac{1}{a_i} = -2\pi \epsilon_i \alpha_{i0} \end{aligned} \quad (14)$$

The per-unit-length capacitance matrix is defined as

$$\begin{bmatrix} Q'_1 \\ Q'_2 \\ \vdots \\ Q'_3 \end{bmatrix} = \begin{bmatrix} C'_{11} & C'_{12} \cdots & C'_{1n} \\ C'_{21} & C'_{22} \cdots & C'_{2n} \\ \vdots & \vdots & \vdots \\ C'_{n1} & C'_{n2} \cdots & C'_{nn} \end{bmatrix} \begin{bmatrix} V_1 \\ V_2 \\ \vdots \\ V_n \end{bmatrix} \quad (15)$$

Taking  $V_i = \begin{cases} 1 \text{ volt} & \text{if } i = j \\ 0 & \text{otherwise} \end{cases}$

we have

$$\begin{bmatrix} C'_{1j} \\ C'_{2j} \\ \vdots \\ C'_{nj} \end{bmatrix} = \begin{bmatrix} Q'_1 \\ Q'_2 \\ \vdots \\ Q'_n \end{bmatrix} \quad V_j = 1 \text{ volt} \quad (16)$$

The complete per-unit-length capacitance matrix is obtained by taking  $j = 1, 2, \dots, n$ .

### SECTION III

#### CALCULATION OF THE EXPANSION COEFFICIENTS

Plug  $\gamma_{im}$  and  $\beta_{i0}$ , which are given in equations (8) and (9), into equation (6), and truncate the expansion series into  $M_i$  finite terms. We then have

$$\psi_i = \sum_{m=1}^{M_i} (\alpha_{im} \cos m\phi_i + \beta_{im} \sin m\phi_i) \left( r_i^m - \frac{a_i^{2m}}{r_i^m} \right) + \alpha_{i0} \ln \frac{r_i}{a_i} + V_i, \quad i = 1, 2, \dots, n \quad (17)$$

Similarly, summing the expansion series to  $M_0$  terms in equation (5)

$$\psi = \sum_{i=1}^n \sum_{m=1}^{M_i} (\eta_{im} \cos m\phi_i + \xi_{im} \sin m\phi_i) r_i^{-m} + \eta_{i0} \ln \frac{r_i}{b_i} + \sum_{m=1}^{M_0} (\eta_{0m} \cos m\phi + \xi_{0m} \sin m\phi) r^m + \eta_{00} \ln \frac{r}{c} + \xi_{00} \quad (18)$$

The coefficients  $\alpha_{im}$ ,  $\beta_{im}$ ,  $\eta_{im}$ ,  $\xi_{im}$ ,  $\eta_{0m}$ ,  $\xi_{0m}$  in equations (17) and (18) are unknown constants which remain to be solved. The total number of unknowns  $N$  is

$$N = 4 \sum_{i=1}^n M_i + 2M_0 + 2n + 2 \quad (19)$$

These unknown coefficients can be solved by using the boundary conditions given in equations (10), (11), (12), and (13).

It is possible to use the point matching technique (ref. 12) to set up the linear equations for these coefficients. However, the stability of the linear equations is very sensitive to the matching points selected. For general problems, it is necessary to employ a systematic way of establishing a stable system of linear equations.

From equation (10), multiply both sides by  $1, \cos m\phi_j, \sin m\phi_j, m = 1, 2, \dots, M_j$  successively, and integrate from  $\phi_j = 0$  to  $2\pi$ , we have

$$\int_0^{2\pi} [\psi_j - \psi]_{r_j=b_j} d\phi_j = 0 \quad (20a)$$

$$\int_0^{2\pi} [\psi_j - \psi]_{r_j=b_j} \cos m\phi_j d\phi_j = 0 \quad (20b)$$

$$\int_0^{2\pi} [\psi_j - \psi]_{r_j=b_j} \sin m\phi_j d\phi_j = 0 \quad (20c)$$

where  $m = 1, 2, \dots, M_j$  and  $j = 1, 2, \dots, n$ . This establishes  $2 \sum_{j=1}^n M_j + n$  equations.

Similarly, the condition given in equation (11) suffices for another  $2 \sum_{j=1}^n M_j + n$  linear equations. By multiplying equation (12) by  $1, \cos m\phi, \sin m\phi, m = 1, 2, \dots, M_0$  successively, we have  $2M_0 + 1$  more equations. Adding the condition of equation (13), we thus have a total of

$$N = 4 \sum_{i=1}^n M_i + 2M_0 + 2n + 2$$

equations. The coefficients are then solved by the Gaussian elimination algorithms of the system of linear equations. Once the coefficients are solved, the per-unit-length capacitance matrix is obtained via Section II-4.

SECTION IV  
NUMERICAL RESULTS

A FORTRAN program has been written to implement the techniques described in this report. The program is verified by the results of the three cases given in Figures 4a, 4b, and 4c. The first case to check the program is the coaxial cable with a layer of dielectric constant  $\epsilon$ . The exact per-unit-length capacitance is

$$C' = \frac{2\pi}{\frac{1}{\epsilon} \ln \frac{b}{a} + \frac{1}{\epsilon_0} \ln \frac{c}{b}}$$

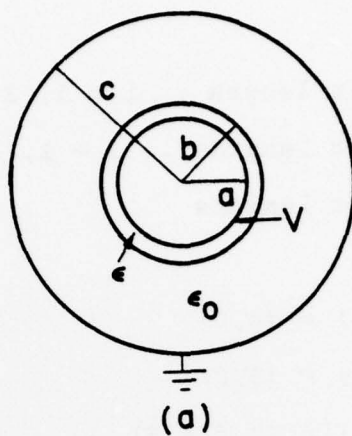
The numerical results of all the values of  $a$ ,  $b$ ,  $c$ , and  $\epsilon$  used in the computations all agree with the exact per-unit-length capacitance to five-digit accuracies.

The per-unit-length capacitance matrix of the two conductors of Figures 4b and 4c are also compared against the exact per-unit-length capacitances (ref. 14). Five-digit accuracies are obtained for all the cases tested. The computation time on a CDC 7600 computer for the two conductors is about 0.4 second.

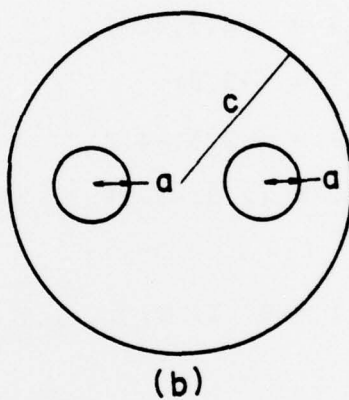
---

14. ITT Reference Data for Radio Engineers, Chapter 24, Howard W. Sams & Co., Inc., Indianapolis (1975).

a) A Coaxial Cable



b) Two Conducting Wires



c) Two Conducting Wires

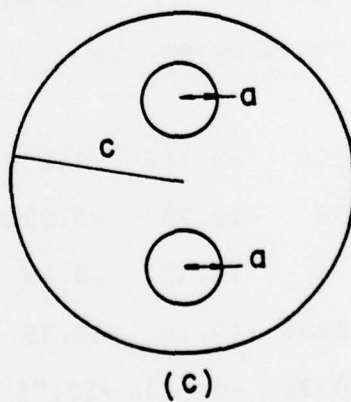


Figure 4.

The characteristic numbers of Figure 5 are given

below

$$a_i = 1 \text{ unit length , } i = 1, 2, \dots, 7.$$

$$b_i = 2 \text{ unit lengths , } i = 1, 2, \dots, 7.$$

$$c = 10 \text{ unit lengths}$$

$$(x_{c1}, y_{c1}) = (0,0)$$

$$(x_{c2}, y_{c2}) = (5,0)$$

$$(x_{c3}, y_{c3}) = (2.5,4.3)$$

$$(x_{c4}, y_{c4}) = (-2.5,4.3)$$

$$(x_{c5}, y_{c5}) = (-5,0)$$

$$(x_{c6}, y_{c6}) = (-2.5,-4.3)$$

$$(x_{c7}, y_{c7}) = (2.5,-4.3)$$

$$M_i = 6 , i = 0, 1, 2, \dots, 7.$$

For these values and a dielectric constant  $\epsilon_i = 2 \epsilon_0$ ,  $i = 1, 2, \dots, 7$ , the resulting per-unit-length capacitance matrix (in picofarad/meter) is

$$\bar{\bar{C}}' = \begin{bmatrix} 55.40 & -9.106 & -9.106 & -9.106 & -9.106 & -9.106 & -9.106 \\ -9.106 & 48.35 & -10.75 & -0.2226 & -0.0336 & -0.2226 & -10.75 \\ -9.106 & -10.75 & 48.35 & -10.75 & -0.2226 & -0.0336 & -0.2226 \\ -9.106 & -0.2226 & -10.75 & 48.35 & -10.75 & -0.2226 & -0.0336 \\ -9.106 & -0.0336 & -0.2226 & -10.75 & 48.35 & -10.75 & -0.2226 \\ -9.106 & -0.2226 & -0.0336 & -0.2226 & -10.75 & 48.35 & -10.75 \\ -9.106 & -10.75 & -0.2226 & -0.0336 & -0.2226 & -10.75 & 48.35 \end{bmatrix}$$

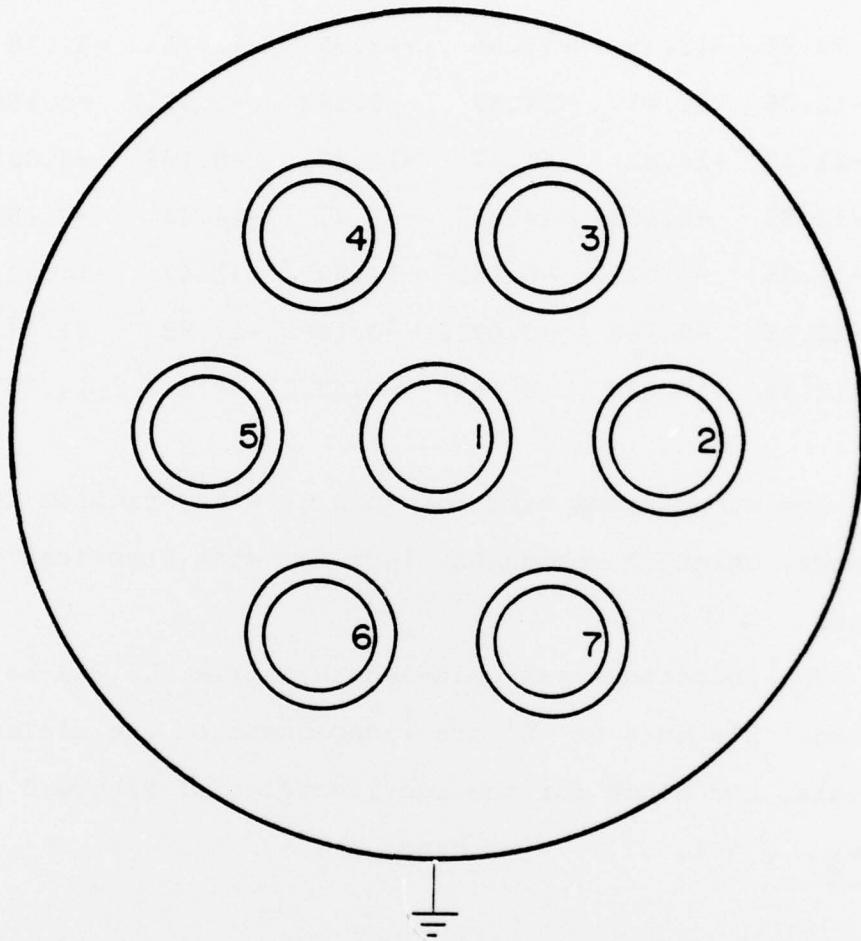


Figure 5. Dielectric Coated Wires in a Grounded Tube

Similarly, for  $\epsilon_i = 4 \epsilon_0$  for all wires, the per-unit-length matrix (in picofarad/meter) is found to be

$$\bar{\bar{C}}' = \begin{bmatrix} 74.55 & -12.35 & -12.35 & -12.35 & -12.35 & -12.35 & -12.35 \\ -12.35 & 61.47 & -14.83 & -0.168 & -0.0212 & -0.168 & -14.83 \\ -12.35 & -14.83 & 61.47 & -14.83 & -0.168 & -0.0212 & -0.168 \\ -12.35 & -0.168 & -14.83 & 61.47 & -14.83 & -0.168 & -0.0212 \\ -12.35 & -0.0212 & -0.168 & -14.83 & 61.47 & -14.83 & -0.168 \\ -12.35 & -0.168 & -0.0212 & -0.168 & -14.83 & 61.47 & -14.83 \\ -12.35 & -14.83 & -0.168 & -0.0212 & -0.168 & -14.83 & 61.47 \end{bmatrix}$$

The computation time for this 7-wire problem is about 7 seconds, which is reasonably fast for most practical computations.

The inductance per-unit-length matrix  $\bar{\bar{L}}'$  can be readily obtained. Elements of  $\bar{\bar{L}}'$  are independent of the dielectric materials, and hence for the configuration of Figure 5 with  $\epsilon_i = \epsilon_0$ ,  $i = 1, \dots, 7$ , we have

$$\bar{\bar{C}}'_0 \bar{\bar{L}}' = \frac{1}{v^2} \bar{\bar{U}} \quad (21)$$

where  $\bar{\bar{C}}'_0$  is the per-unit-length capacitance matrix of this configuration computed by using the computer code.  $\bar{\bar{U}}$  is the 7x7 unity matrix and  $v$  is the speed of light inside the tube. For the geometry previously used, the per-unit-length capacitance matrix (in picofara/meter) is

$$\bar{\bar{C}}_0' = \begin{bmatrix} 37.0 & -5.96 & -5.96 & -5.96 & -5.96 & -5.96 & -5.96 \\ -5.96 & 34.7 & -6.76 & -0.258 & -0.0516 & -0.258 & -6.76 \\ -5.96 & -6.76 & 34.7 & -6.76 & -0.258 & -0.0516 & -0.258 \\ -5.96 & -0.258 & -6.76 & 34.7 & -6.76 & -0.258 & -0.0516 \\ -5.96 & -0.0516 & -0.258 & -6.76 & 34.7 & -6.76 & -0.258 \\ -5.96 & -0.258 & -0.0516 & -0.258 & -6.76 & 34.7 & -6.76 \\ -5.96 & -6.76 & -0.258 & -0.0516 & -0.258 & -6.76 & 34.7 \end{bmatrix}$$

The per-unit-length inductance matrix (microhenry/meter), using equation (21) is

$$\bar{\bar{L}}' = \begin{bmatrix} 304 & 105 & 105 & 105 & 105 & 105 & 105 \\ 105 & 293 & 97 & 53 & 44 & 53 & 97 \\ 105 & 97 & 293 & 97 & 53 & 44 & 53 \\ 105 & 53 & 97 & 293 & 97 & 53 & 44 \\ 105 & 44 & 53 & 97 & 293 & 97 & 53 \\ 105 & 53 & 44 & 53 & 97 & 293 & 97 \\ 105 & 97 & 53 & 44 & 53 & 97 & 293 \end{bmatrix}$$

This method of evaluating  $\bar{\bar{L}}'$  enables one to compute the propagation matrix  $\bar{\bar{\gamma}}$  of a multiconductor cable with dielectric coating, as

$$\bar{\bar{\gamma}}^2 = \bar{\bar{C}}' \bar{\bar{L}}'$$

for the current mode (ref. 15).

- 
15. F.M. Tesche and T.K. Liu, Selected Topics in Transmission Line Theory, AFWL-TR-77-73, Air Force Weapons Laboratory, Kirtland Air Force Base, NM, March 1977.

SECTION V  
CONCLUSIONS

The per-unit-length capacitance matrix of a multi-conductor transmission line enclosed in a shielding tube is evaluated by the method of multi-series expansion. Numerical values of typical examples are given.

The per-unit-length inductance matrix can be obtained by finding the inverse of the corresponding per-unit-length capacitance matrix with all dielectric coatings of the conductors removed. The propagation matrix of the configuration is then given by this inductance matrix and the per-unit-length capacitance matrix computed for the system with dielectric coatings.

#### REFERENCES

1. F.Y. Chang, "Transient Analysis of Lossless Coupled Transmission Lines in a Nonhomogeneous Dielectric Medium," IEEE Trans. on Microwave Theory and Techniques, Vol. MTT-18, No. 9, pp. 616-626, September 1970.
2. C.R. Paul, "On Uniform Multimode Transmission Lines," IEEE Trans. on Microwave Theory and Technique, Vol. MTT-21, No. 8, pp. 556-558, August 1973.
3. C.R. Paul, "Useful Matrix Chain Parameter Identities for the Analysis of Multiconductor Transmission Lines," IEEE Trans. on Microwave Theory and Techniques, Vol. MTT-23, No. 9, pp. 756-760, September 1975.
4. R. Plonsey and R. Collin, Principles and Applications of Electromagnetic Fields, McGraw-Hill Co., New York, 1961,, p. 71.
5. E. Weber, Electromagnetic Fields - Theory and Applications, Vol. 1 - Mapping of Fields, John Wiley and Sons, New York, 1950, pp. 139, 223, 226, 379.
6. J.C. Clements, C.R. Paul, A.T. Adams, "Computation of the Capacitance Matrix for Systems of Dielectric-Coated Conductors," IEEE Trans. on Electromagnetic Compatibility, Vol. EMC-17, No. 4, pp. 238-248, November 1975.
7. M.P. Sarma and W. Janischewskj, "Electrostatic Field of a System of Parallel Cylindrical Conductors," IEEE Trans. on Power Apparatus and Systems, Vol. PAS-88, No. 7, pp. 1069-1079, July 1969.
8. P.C. Chestnut, "On Determining the Capacitances of Shielded Multiconductor Transmission Lines," IEEE Trans. on Microwave Theory and Techniques, Vol. MTT-17, No. 10, pp. 734-745, October 1969.
9. R.F. Harrington, Field Computation by Moment Methods, MacMillan Co., New York, 1968.
10. A.T. Adams, Electromagnetics for Engineers, Ronald Press Co., New York, 1972.
11. M.P. Sarma, "Application of Moment Methods to the Computation of Electrostatic Fields - Part I - Parallel Cylindrical Conductor Systems," IEEE PES Summer Meeting, San Francisco, California, July 9-14, 1972.

12. A.E. Feather and C.R. Paul, Computation of the Capacitance Matrices for Ribbon Cables, RADC-TR-76-101, Vol. II, Rome Air Development Center, NY, April 1976.
13. R.F. Harrington, Time-Harmonic Electromagnetic Fields, McGraw-Hill, New York, 1961.
14. ITT Reference Data for Radio Engineers, Chapter 24, Howard W. Sams & Co., Inc., Indianapolis, 1975.
15. F.M. Tesche and T.K. Liu, Selected Topics in Transmission Line Theory, AFWL-TR-77-73, Air Force Weapons Laboratory, Kirtland Air Force Base, NM, March 1977.

