

AD-A048 383

DAVID W TAYLOR NAVAL SHIP RESEARCH AND DEVELOPMENT CE--ETC F/G 13/10
PERFORMANCE CHARACTERISTICS OF A PAIR OF PROPELLERS FOR THE SEA--ETC(U)

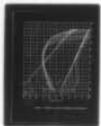
DEC 77 J G PECK

SPD-806-01

UNCLASSIFIED

NL

1 of 2
AD
AO48383



END
DATE
FILMED
2-78
DDC

CONT.

SPD-806-01

PERFORMANCE CHARACTERISTICS OF A PAIR OF PROPELLERS FOR THE SEA FOX

**DAVID W. TAYLOR NAVAL SHIP
RESEARCH AND DEVELOPMENT CENTER**

Bethesda, Md. 20084



ADA 048383

PERFORMANCE CHARACTERISTICS OF A
PAIR OF PROPELLERS FOR THE SEA FOX

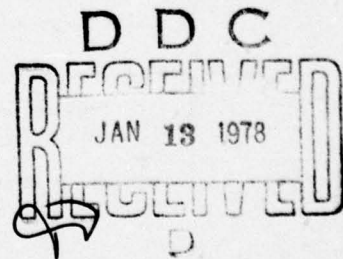
by

James G. Peck

APPROVED FOR PUBLIC RELEASE: DISTRIBUTION UNLIMITED

AD No. **DDC** FILE COPY

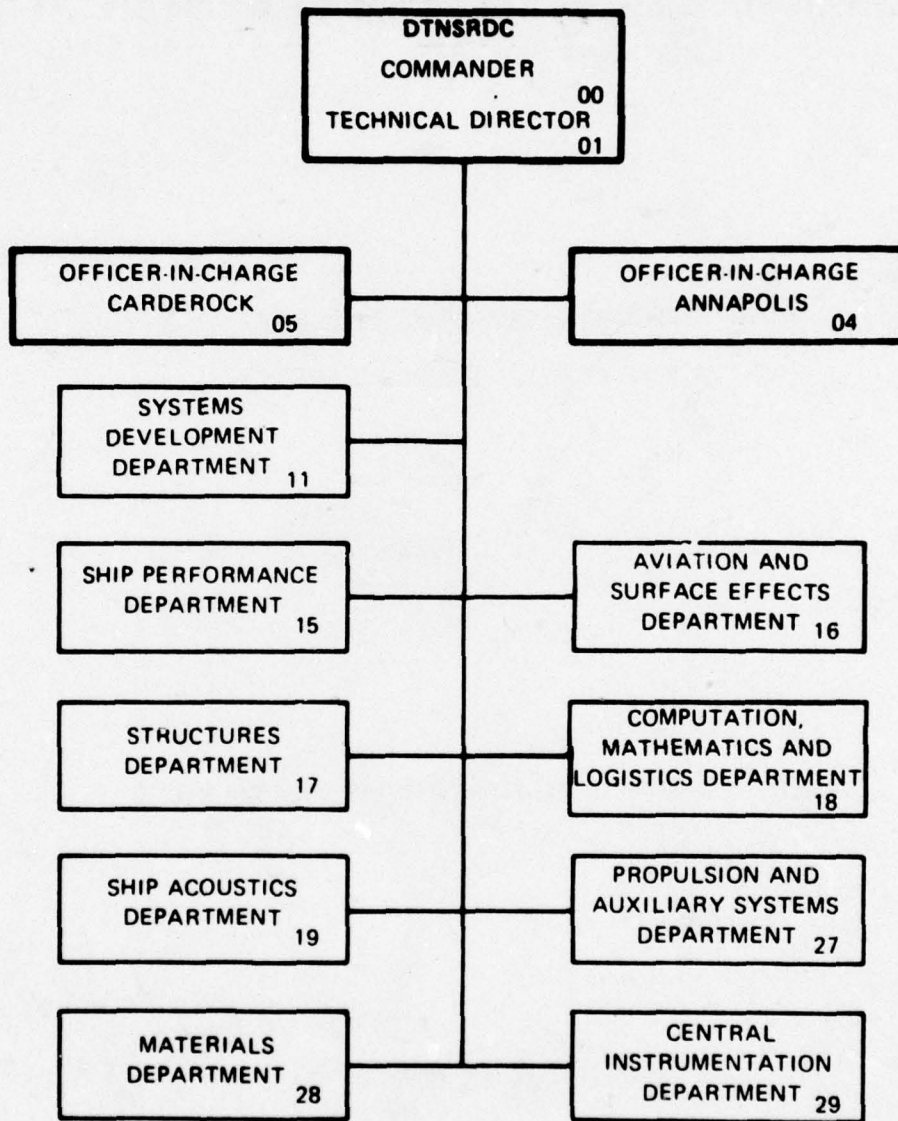
SHIP PERFORMANCE DEPARTMENT
DEPARTMENTAL REPORT



December 1977

SPD-806-01

MAJOR DTNSRDC ORGANIZATIONAL COMPONENTS



UNCLASSIFIED

SECURITY CLASSIFICATION OF THIS PAGE (When Data Entered)

REPORT DOCUMENTATION PAGE		READ INSTRUCTIONS BEFORE COMPLETING FORM
14. REPORT NUMBER SPD-806-01 ✓	2. GOVT ACCESSION NO.	3. RECIPIENT'S CATALOG NUMBER Departmental Rept.
6. TITLE (and Subtitle) PERFORMANCE CHARACTERISTICS OF A PAIR OF PROPELLERS FOR THE SEA FOX.		5. TYPE OF REPORT & PERIOD COVERED
7. AUTHOR(S) 10. James G. Peck		8. CONTRACT OR GRANT NUMBER(s)
9. PERFORMING ORGANIZATION NAME AND ADDRESS David W. Taylor Naval Ship R&D Center ✓ Bethesda, MD 20084		10. PROGRAM ELEMENT, PROJECT, TASK AREA & WORK UNIT NUMBERS Task Area S0414-SW001 Element 63586N Work Unit 1-1532-080
11. CONTROLLING OFFICE NAME AND ADDRESS Naval Ship Engineering Center, Norfolk Division Norfolk, VA 23511		12. REPORT DATE December 1977
14. MONITORING AGENCY NAME & ADDRESS (if different from Controlling Office) 12. 16p.		13. NUMBER OF PAGES 14
		15. SECURITY CLASS. (of this report) UNCLASSIFIED
		15a. DECLASSIFICATION/DOWNGRADING SCHEDULE
16. DISTRIBUTION STATEMENT (of this Report) APPROVED FOR PUBLIC RELEASE: DISTRIBUTION UNLIMITED 16. S0414SW		
17. DISTRIBUTION STATEMENT (of the abstract entered in Block 20, if different from Report) 17. S0414SW001		
18. SUPPLEMENTARY NOTES		
19. KEY WORDS (Continue on reverse side if necessary and identify by block number) Cavitation, Propeller		
20. ABSTRACT (Continue on reverse side if necessary and identify by block number) Two 22 inch Newton Rader type full scale propellers were manufactured and tested for use during full scale trials on the 11 meter "Sea Fox". Open water tests were conducted and cavitating performance characteristics were obtained for these propellers over a range of cavitation numbers corresponding to full scale speeds from 9 to 45 knots. The propeller performance data and a table containing the principal propeller geometry information is presented in this report.		

SECURITY CLASSIFICATION OF THIS PAGE (When Data Entered)

REPORT DOCUMENTARY NUMBER

100

PERFORMING ORGANIZATION NAME(S) AND ADDRESS(ES)

REPORT NUMBER

DATE

PERFORMING ORGANIZATION REPORT NUMBER

1

SECURITY CLASSIFICATION OF THIS PAGE (When Data Entered)

UNCLASSIFIED

1

APPROVED FOR PUBLICATION (If Applicable)

EXPLANATION

no further action should be taken on this report unless it is requested by the recipient of the report.

1

SECURITY CLASSIFICATION OF THIS PAGE (When Data Entered)

TABLE OF CONTENTS

	Page
ABSTRACT.....	1
ADMINISTRATIVE INFORMATION.....	1
INTRODUCTION.....	1
EXPERIMENTAL PROCEDURE AND FACILITIES.....	2
PRESENTATION OF DATA AND DISCUSSION.....	2

ACCESSION for	
DTIC	White Section <input checked="" type="checkbox"/>
DDC	Full Section <input type="checkbox"/>
UNANNOUNCED	<input type="checkbox"/>
JUSTIFICATION.....	
BY.....	
DISTRIBUTION/AVAILABILITY CODES	
Dist.	AVAIL. and/or SPECIAL
A	

D D C
RECEIVED
 JAN 13 1978
RECEIVED
 D

LIST OF FIGURES

	Page
Figure 1 - Open Water Propeller Characteristics.....	4
Figure 2 - Propeller Cavitating Performance Characteristics.....	5
Figure 3 - Representative Sketches of Cavitation Patterns for Thrust Loading Coefficients of 0.10 and 0.15.....	6

LIST OF TABLES

TABLE 1 - PROPELLER GEOMETRY.....	7
TABLE 2 - TABULATED VALUES OF PROPELLER CAVITATION PERFORMANCE CHARACTERISTICS.....	8

NOTATION

		<u>Dimensions</u>
A_E	Expanded area of propeller blades $A_E = EAR (A_O)$	ft^2, m^2
A_O	Disc area of propeller $A_O = \frac{\pi D^2}{4}$	ft^2, m^2
A_P	Projected area of propeller blades $A_P = A_E (1.067 - 0.229 P/D)$	ft^2, m^2
C	Blade section length	ft, m
$C_{0.7}$	Blade section at 0.7 radius	ft, m
D	Propeller diameter	ft, m
EAR	Expanded area ratio A_E/A_O	
g	Acceleration due to gravity	$ft/sec^2, m/sec^2$
h	Propeller submergence	ft, m
J	Advance coefficient $J = V/nD$	
K_T	Thrust coefficient $K_T = \frac{T}{\rho n^2 D^4}$	
K_T/J^2	Loading coefficient	
K_Q	Torque coefficient $K_Q = \frac{Q}{\rho n^2 D^5}$	
K_Q/J^3	Powering coefficient	
n	Propeller rotation speed	$rev/sec, r/s$
P	Propeller pitch	ft, m
P/D	Pitch-diameter ratio	
P_A	Atmospheric pressure	$lb/ft^2, N/m^2$
P_H	Static water pressure, $P_H = \rho gh$	$lb/ft^2, N/m^2$
P_V	Vapor pressure	$lb/ft^2, N/m^2$
T	Propeller thrust	lb, N

		<u>Dimensions</u>
Q	Propeller torque	lb/ft, N·m
Q _c	Torque load coefficient, $Q_c = \frac{2.55 K_Q}{(J^2 + 4.84)(EAR)(1.067 - 0.229 P/D)}$	
v	Velocity of boat	ft/sec, m/sec
v _{0.7}	Resultant velocity of water at 0.7 radius of propeller $v_{0.7}^2 = \frac{J^2 + 4.83}{J^2} v^2$	ft/sec, m/sec
n	Propeller open water efficiency, $\eta = \frac{K_T J}{K_Q 2\pi}$	
ρ	Mass density of water	lb-sec ² /ft ⁴ , Kg/m ³
σ	Cavitation number, $\sigma = \frac{P_A + P_H - P_V}{\frac{1}{2} \rho v^2}$	
σ _{0.7}	Local cavitation number, $\sigma_{0.7} = \frac{P_A + P_H - P_V}{\frac{1}{2} \rho v_{0.7}^2}$	
τ	Thrust load coefficient, $\tau = \frac{T}{\frac{1}{2} \rho A_p v_{0.7}^2}$	

ABSTRACT

Two 22 inch Newton Rader type full scale propellers were manufactured and tested for use during full scale trials on the 11 meter "Sea Fox". Open water tests were conducted and cavitating performance characteristics were obtained for these propellers over a range of cavitation numbers corresponding to full scale speeds from 9 to 45 knots. The propeller performance data and a table containing the principal propeller geometry information is presented in this report.

ADMINISTRATIVE INFORMATION

This work was performed for the Naval Ship Engineering Center, Norfolk Division under Task Area S0414-SW001 and Project Element 63586N.

INTRODUCTION

The Naval Ship Engineering Center Norfolk Division (NAVSECNORDIV) requested that the David Taylor Naval Ship R&D Center (DTNSRDC) procure and characterize a pair of propellers for use during full scale trials of the "Sea Fox". This pair of propellers was manufactured for DTNSRDC as per NAVSEA drawing No. Seafox 101-5033153 by Michigan Wheel Co. The principal dimensions of these propellers are given in Table 1.

Open water characteristics were obtained on both right and left hand propellers. Cavitating performance characteristics were obtained on the right hand propeller only since open water test results indicated that the performance of the two propellers is essentially identical. Upon completion of the test program this pair of propellers was shipped to the boat construction site as per NAVSECNORDIV request.

EXPERIMENTAL PROCEDURE AND FACILITIES

Open water characteristics of the propellers were obtained in the deep water basin using the 35 HP dynamometer. Both propellers were characterized in open water over a range of speed coefficients (J) from zero velocity to zero thrust. The Reynolds number for the open-water tests ranged from 2.5×10^6 to 3.1×10^6 .

Cavitation characteristics of the propellers were obtained in the 36" Variable Pressure Water Tunnel in uniform flow. Two water velocities, 25 fps and 30 fps were used to provide a range of cavitation numbers from 9.43 to 0.40. The cavitation numbers represent a range of full scale speeds from 9.4 to 45 knots. Reynolds number for the cavitation experiments ranged from 4.0×10^6 to 7.4×10^6 .

PRESENTATION OF DATA AND DISCUSSION

The open water characteristics data of the propellers were reduced to the usual nondimensional coefficients of thrust and torque. The open water characteristics for both propellers are presented in Figure 1. The closeness of the coefficients for the left hand and right hand propellers indicate that they are very closely matched in both pitch and blade outline.

Cavitating performance characteristics were obtained for the right hand propeller for cavitation numbers ranging from 9.4 to 0.4. These data

were reduced to the usual nondimensional coefficients of torque, thrust, and efficiency. In addition to the normal coefficients the nondimensional coefficients of K_T/J^2 , K_Q/J^3 , Q_c , $\sigma_{0.7}$ and τ were calculated. Curves showing K_T , K_Q and η for constant values of σ are shown plotted against J in Figure 2. Tabulated values of J , K_T , K_Q , η , K_T/J^2 , K_Q/J^3 , Q_c , $\sigma_{0.7}$ and τ for all test conditions are provided in Table 2. Representative cavitation patterns for thrust loading coefficient (K_T/J^2) of 0.10 and 0.15 are shown in Figure 3.

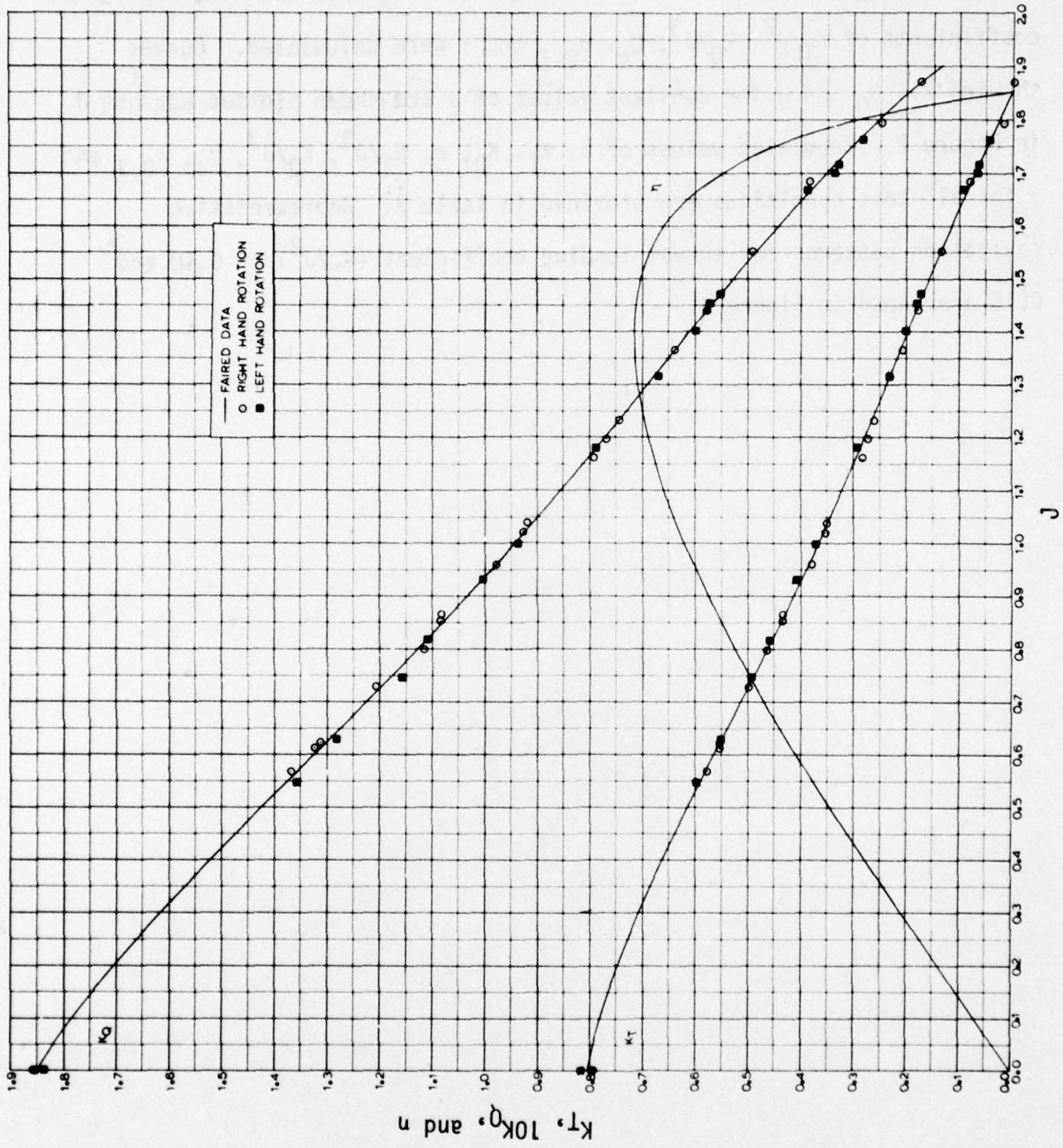


Figure 1 - Open Water Propeller Characteristics

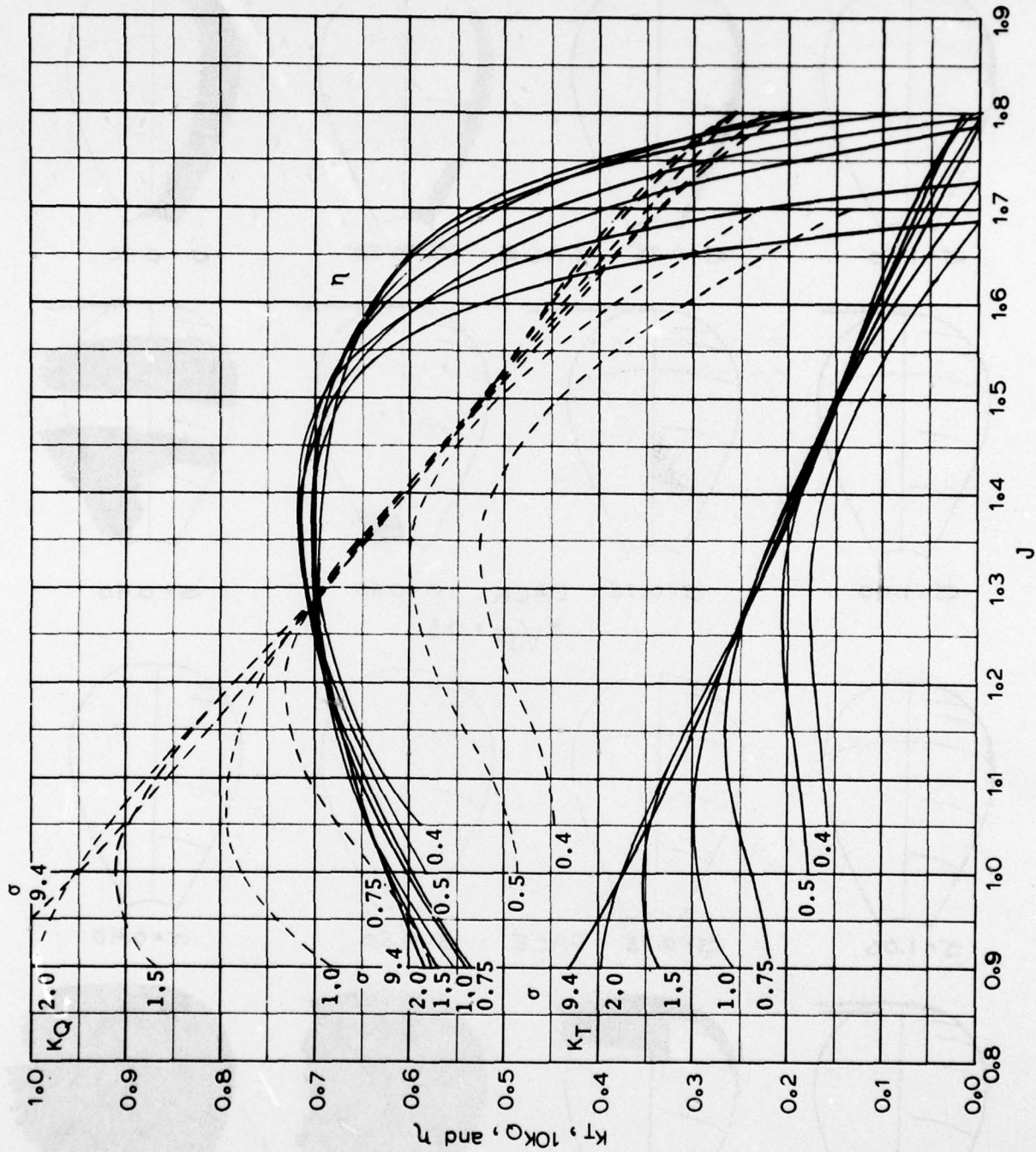


Figure 2 - Propeller Cavitation Performance Characteristics

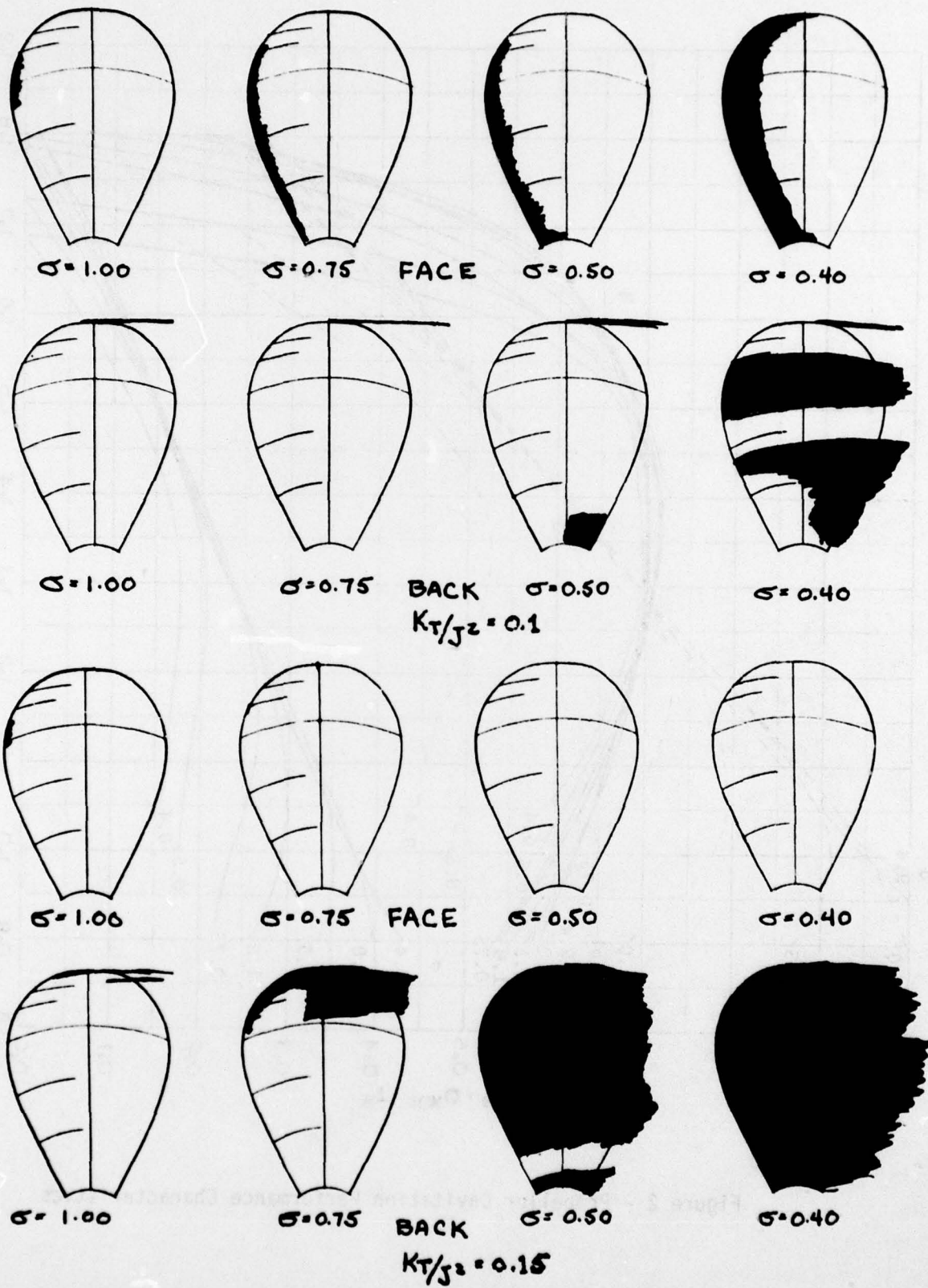


Figure 3 - Representative Sketches of Cavitation Patterns for Thrust Loading Coefficients of 0.10 and 0.15

TABLE 1 - PROPELLER GEOMETRY

No. of Blades	3
Diameter	22 in (558 mm)
Pitch	34 in (863 mm)
Pitch Ratio	1.545
Developed Area Ratio	0.719
Hub to Diameter Ratio	0.18

DTNSRDC ISSUES THREE TYPES OF REPORTS

1. DTNSRDC REPORTS, A FORMAL SERIES, CONTAIN INFORMATION OF PERMANENT TECHNICAL VALUE. THEY CARRY A CONSECUTIVE NUMERICAL IDENTIFICATION REGARDLESS OF THEIR CLASSIFICATION OR THE ORIGINATING DEPARTMENT.

2. DEPARTMENTAL REPORTS, A SEMIFORMAL SERIES, CONTAIN INFORMATION OF A PRELIMINARY, TEMPORARY, OR PROPRIETARY NATURE OR OF LIMITED INTEREST OR SIGNIFICANCE. THEY CARRY A DEPARTMENTAL ALPHANUMERICAL IDENTIFICATION.

3. TECHNICAL MEMORANDA, AN INFORMAL SERIES, CONTAIN TECHNICAL DOCUMENTATION OF LIMITED USE AND INTEREST. THEY ARE PRIMARILY WORKING PAPERS INTENDED FOR INTERNAL USE. THEY CARRY AN IDENTIFYING NUMBER WHICH INDICATES THEIR TYPE AND THE NUMERICAL CODE OF THE ORIGINATING DEPARTMENT. ANY DISTRIBUTION OUTSIDE DTNSRDC MUST BE APPROVED BY THE HEAD OF THE ORIGINATING DEPARTMENT ON A CASE-BY-CASE BASIS.

AD-A048 383

DAVID W TAYLOR NAVAL SHIP RESEARCH AND DEVELOPMENT CE--ETC F/G 13/10
PERFORMANCE CHARACTERISTICS OF A PAIR OF PROPELLERS FOR THE SEA--ETC(U)
DEC 77 J G PECK

UNCLASSIFIED

SPD-806-01

NL

2 OF 2
AD
AO 48 383



SUPPLEMENTARY
INFORMATION



END
DATE
FILMED
12-78
DDC

SUPPLEMENTARY

INFORMATION

AD-17048383

ERRATA SHEET

These corrections should be made to DTNSRDC report SPD-806-01, "Performance, Characteristics of a Pair of Propellers for the SEA FOX," by James G. Peck, December 1977.

Add to Table 1, page 7:

Expanded Area Ratio 0.82

Replace TAUC columns in Table 2, page 8 with these values:

Sigma = 9.430		Sigma = 2.0		Sigma = 1.5	
J	TAUC	J	TAUC	J	TAUC
.9000	.3315	.9000	.3058	.9000	.2588
.9500	.3040	.9500	.2943	.9500	.2668
1.0000	.2784	1.0000	.2784	1.0000	.2639
1.0500	.2546	1.0500	.2594	1.0500	.2530
1.1000	.2323	1.1000	.2387	1.1000	.2368
1.1500	.2115	1.1500	.2174	1.1500	.2174
1.2000	.1919	1.2000	.1962	1.2000	.1966
1.2500	.1734	1.2500	.1757	1.2500	.1756
1.3000	.1558	1.3000	.1564	1.3000	.1554
1.3500	.1391	1.3500	.1385	1.3500	.1367
1.4000	.1231	1.4000	.1221	1.4000	.1198
1.4500	.1077	1.4500	.1070	1.4500	.1047
1.5000	.0928	1.5000	.0931	1.5000	.0912
1.5500	.0783	1.5500	.0800	1.5500	.0787
1.6000	.0641	1.6000	.0673	1.6000	.0667
1.6500	.0503	1.6500	.0543	1.6500	.0543
1.7000	.0366	1.7000	.0406	1.7000	.0404
1.7500	.0231	1.7500	.0254	1.7500	.0239
1.8000	.0097	1.8000	.0080	1.8000	.0037

ERRATA SHEET (Cont.)

Sigma = 1.0

J	TAUC
.9000	.1980
.9500	.2132
1.0000	.2195
1.0500	.2188
1.1000	.2128
1.1500	.2027
1.2000	.1897
1.2500	.1748
1.3000	.1587
1.3500	.1422
1.4000	.1256
1.4500	.1092
1.5000	.0932
1.5500	.0775
1.6000	.0622
1.6500	.0470
1.7000	.0317
1.7500	.0159
1.8000	-.0009

Sigma = .75

J	TAUC
.9000	.1657
.9500	.1709
1.0000	.1784
1.0500	.1849
1.1000	.1882
1.1500	.1873
1.2000	.1818
1.2500	.1721
1.3000	.1589
1.3500	.1431
1.4000	.1258
1.4500	.1080
1.5000	.0904
1.5500	.0736
1.6000	.0578
1.6500	.0426
1.7000	.0273
1.7500	.0105
1.8000	-.0098

Sigma = .50

J	TAUC
1.0000	.1326
1.0500	.1323
1.1000	.1348
1.1500	.1378
1.2000	.1399
1.2500	.1398
1.3000	.1367
1.3500	.1303
1.4000	.1202
1.4500	.1068
1.5000	.0904
1.5500	.0717
1.6000	.0516
1.6500	.0310
1.7000	.0113

Sigma = .40

J	TAUC
1.0500	.1153
1.1000	.1159
1.1500	.1179
1.2000	.1197
1.2500	.1199
1.3000	.1177
1.3500	.1124
1.4000	.1037
1.4500	.0915
1.5000	.0761
1.5500	.0580
1.6000	.0376
1.6500	.0159
1.7000	-.0062