

AD-A049 286

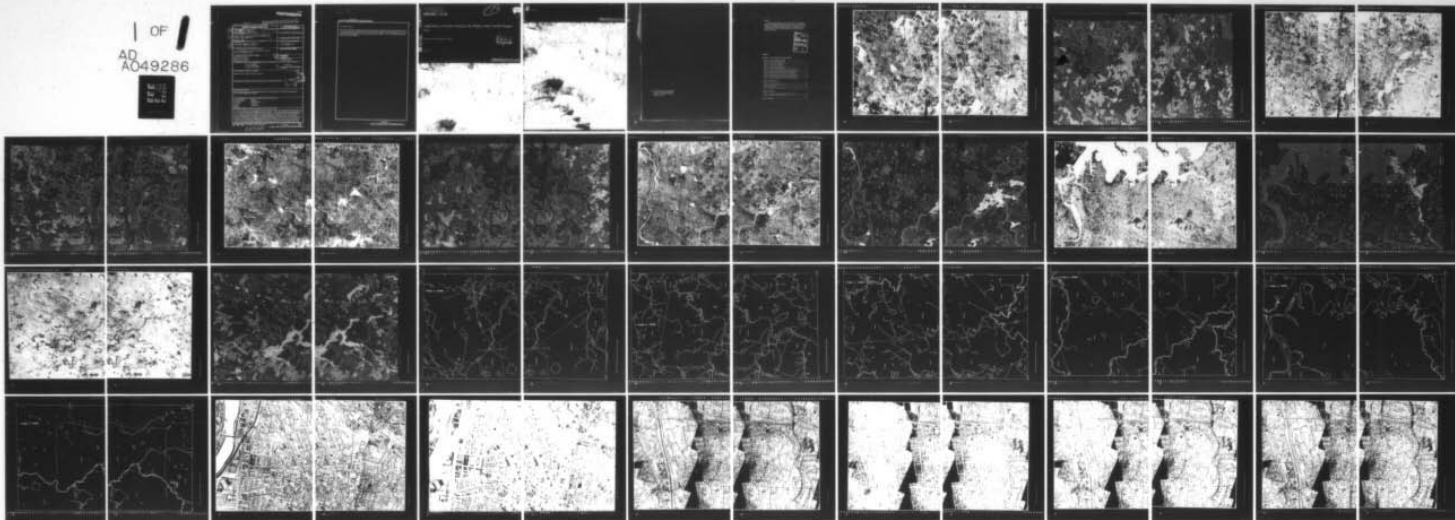
COLD REGIONS RESEARCH AND ENGINEERING LAB HANOVER N H F/G 13/2
APPLICATIONS OF REMOTE SENSING IN THE BOSTON URBAN STUDIES PROG--ETC(U)
JUN 77 C J MERRY, H L MCKIM

UNCLASSIFIED

CRREL-77-13-PT-2

NL

1 OF 1
AD
A049286



END
DATE
FILMED
2 -78
DDC

PHOTOGRAPH

Unclassified

ORIGINAL CONTAINS COLOR PLATES: ALL DDC
REPRODUCTIONS WILL BE IN BLACK AND WHITE

SECURITY CLASSIFICATION OF THIS PAGE (When Data Entered)

REPORT DOCUMENTATION PAGE		READ INSTRUCTIONS BEFORE COMPLETING FORM
14. REPORT NUMBER CRREL 77-13-PT-2	2. GOVT ACCESSION NO.	3. RECIPIENT'S CATALOG NUMBER
6. TITLE (and Subtitle) APPLICATIONS OF REMOTE SENSING IN THE BOSTON URBAN STUDIES PROGRAM. Part II,		5. TYPE OF REPORT & PERIOD COVERED
7. AUTHOR(s) Carolyn J. Merry Harlan L. McKim		6. PERFORMING ORG. REPORT NUMBER
9. PERFORMING ORGANIZATION NAME AND ADDRESS U.S. Army Cold Regions Research and Engineering Laboratory Hanover, New Hampshire 03755		8. CONTRACT OR GRANT NUMBER(s) Order No. CWP-S-75-10
11. CONTROLLING OFFICE NAME AND ADDRESS Directorate of Civil Works Office, Chief of Engineers Washington, D.C. 20314		10. PROGRAM ELEMENT, PROJECT, TASK AREA & WORK UNIT NUMBERS
14. MONITORING AGENCY NAME & ADDRESS (if different from Controlling Office) 12 101p.		11. REPORT DATE June 77
16. DISTRIBUTION STATEMENT (of this Report) Approved for public release; distribution unlimited.		13. NUMBER OF PAGES Pt. 1 - 20, Pt. 2 - 26
17. DISTRIBUTION STATEMENT (of the abstract entered in Block 20, if different from Report)		15. SECURITY CLASS. (of this report) Unclassified
18. SUPPLEMENTARY NOTES This report is published in two separately bound parts. Part 1 comprises the text, tables and three illustrations; Part 2 comprises Appendixes A, B and C.		15a. DECLASSIFICATION/DOWNGRADING SCHEDULE
19. KEY WORDS (Continue on reverse side if necessary and identify by block number) Aerial photography Mapping Environments Remote detectors Hydrology Utilization Images Water quality Land areas		
20. ABSTRACT (Continue on reverse side if necessary and identify by block number) The cost effectiveness of remote sensing techniques was compared to that of the conventional techniques used by the U.S. Army Engineer Division, New England, in the Boston Harbor - Eastern Massachusetts Metropolitan Area study. A total of 6 level I, 18 level II, and 18 level III land use categories were mapped from NASA RB-57/RC-8 high altitude aircraft photography for six selected 7½-minute quadrangles located in the Boston area. Watershed and political boundaries could not be mapped from the NASA photography. Impervious surfaces and curb lengths were mapped from low altitude aircraft photography obtained with a Zeiss RMK 15/23 camera system (measured scale 1:3500) for two sites in the Boston South and Newton quadrangles. The remote sensing procedures used in this study usually provided much greater detail than conventional procedures. The remote sensing procedures were not		

DDC
JAN 31 1978
F

DD FORM 1 JAN 73 1473

EDITION OF 1 NOV 68 IS OBSOLETE

Unclassified

LB

SECURITY CLASSIFICATION OF THIS PAGE (When Data Entered)

037 100

Unclassified

SECURITY CLASSIFICATION OF THIS PAGE(When Data Entered)

20. Abstract (cont'd)

always cost-effective when compared to the conventional procedures, but they were always more accurate. Therefore, remote sensing techniques should be used and appropriate photographic resolution and scale factors taken into consideration when mapping land use, curb density and impervious surfaces for use in the STORM (storage, treatment, overflow, runoff) model.

Unclassified

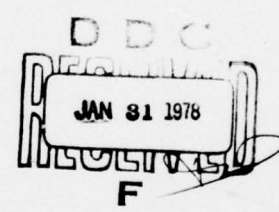
AD A 0 49286

CRREL REPORT 77-13



Applications of remote sensing in the Boston Urban Studies Program Part II

Carolyn J. Merry and Harlan L. McKim



DDC FILE COPY

June 1977

ORIGINAL CONTAINS COLOR PLATES: ALL DDC
REPRODUCTIONS WILL BE IN BLACK AND WHITE

Cover: Satellite photograph of eastern Massachusetts with the study area outlined. (NASA photograph taken on 21 September 1973 during the Skylab-3 mission.)

PREFACE

This report contains Appendices A, B and C of CRREL Report 77-13, *Applications of Remote Sensing in the Boston Urban Studies Program*. The land use maps (Appendix A) contained in this report have been slightly reduced from the original scale of 1:24,000. The bar scale on these maps can be used for scale purposes. The original land use maps can be viewed at the U.S. Army Cold Regions Research and Engineering Laboratory, Hanover, New Hampshire.

ACCESSION for	
NTIS	White Section <input checked="" type="checkbox"/>
DDC	Buff Section <input type="checkbox"/>
UNANNOUNCED <input type="checkbox"/>	
JUSTIFICATION	
PER BASIC PROC.	
BY _____	
DISTRIBUTION/AVAILABILITY CODES	
Dist.	AVAIL and/or SPECIAL
A	

CONTENTS

Appendix A. Land use and hydrologic and political boundaries

Figure A1. Land use, Marlborough quadrangle	2
Figure A2. Land use, Framingham quadrangle	4
Figure A3. Land use, Natick quadrangle	6
Figure A4. Land use, Newton quadrangle	8
Figure A5. Land use, Boston South quadrangle	10
Figure A6. Land use, Medfield quadrangle	12
Figure A7. Hydrologic and political boundaries, Marlborough quadrangle	14
Figure A8. Hydrologic and political boundaries, Framingham quadrangle	15
Figure A9. Hydrologic and political boundaries, Natick quadrangle	16
Figure A10. Hydrologic and political boundaries, Newton quadrangle	17
Figure A11. Hydrologic and political boundaries, Boston South quadrangle	18
Figure A12. Hydrologic and political boundaries, Medfield quadrangle	19

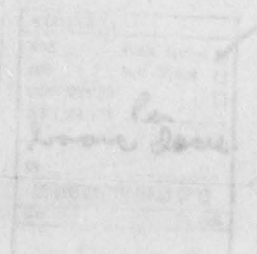
Appendix B. Impervious surfaces

Figure B1. Land use, Boston South site	20
Figure B2. Impervious surfaces, Boston South site	21
Figure B3. Land use, Newton site	22
Figure B4. Impervious surfaces, Newton site	23

Appendix C. Curb density

Figure C1. Curb density obtained by photointerpretation, Newton site	24
Figure C2. Ground truth map of curb density, Newton site	25

Legend for Appendix A	27
-----------------------------	----







42° 22' 30"

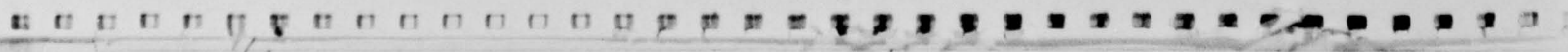
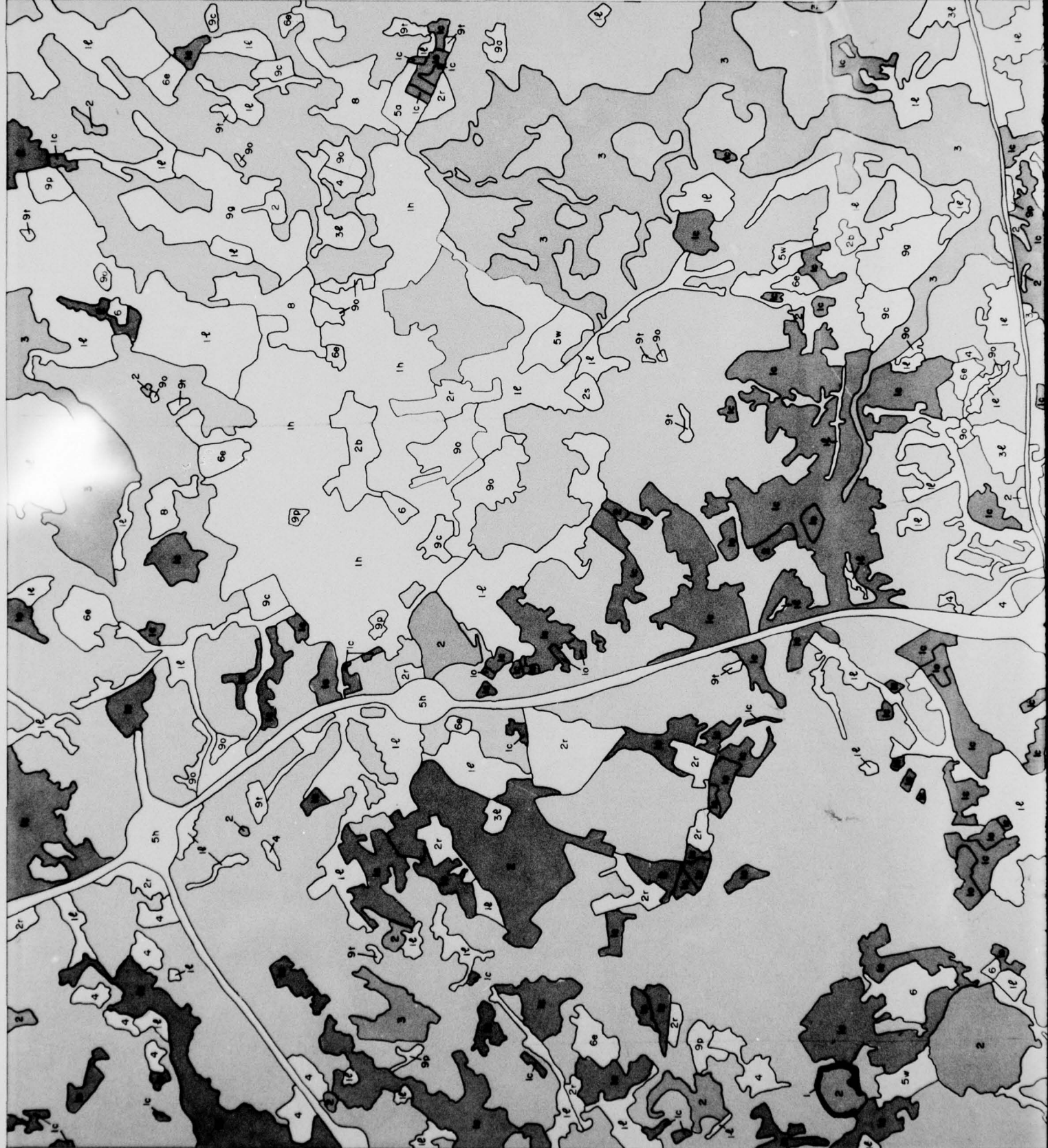
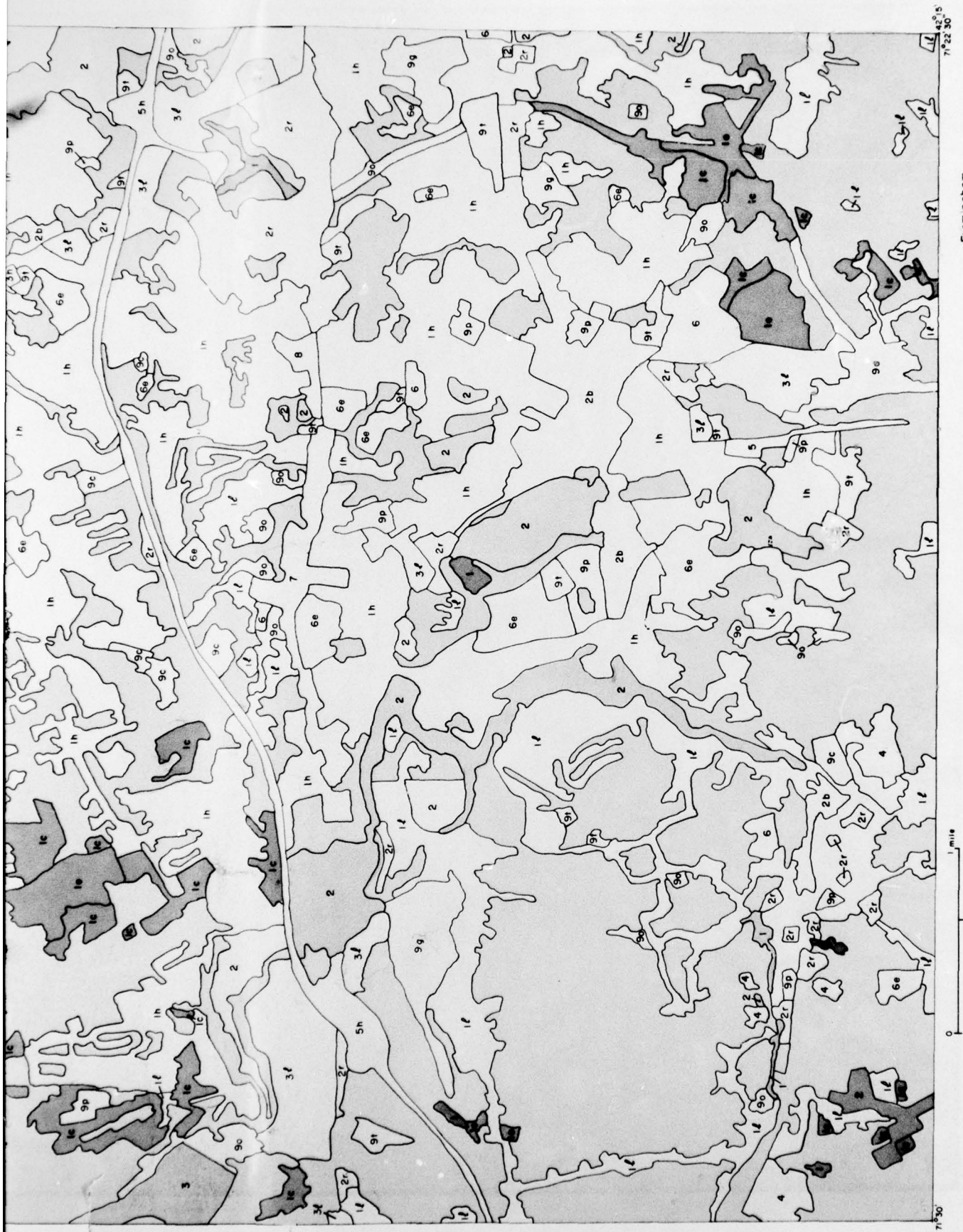




Figure A1(b). Land use, Marlborough quadrangle.





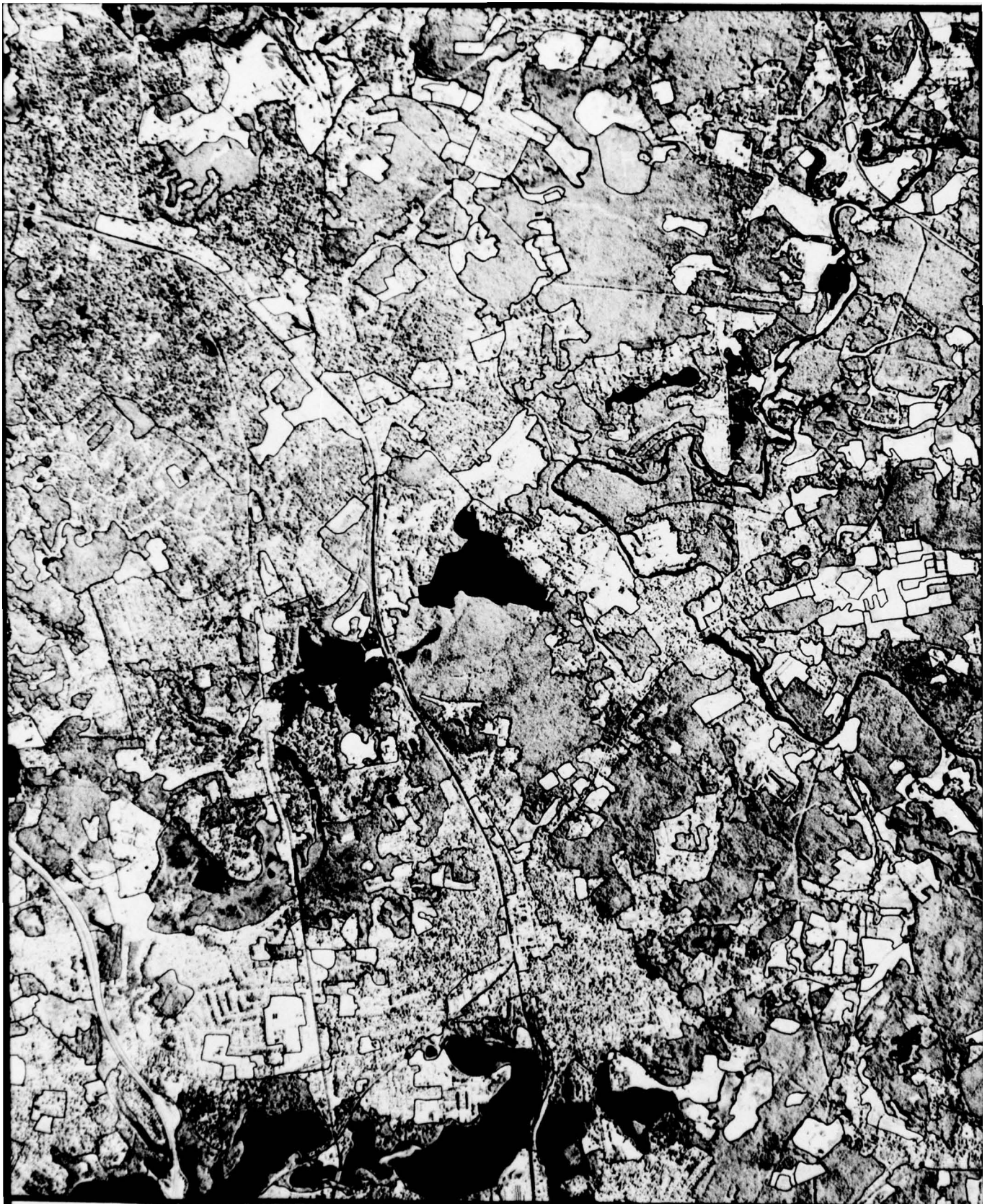


Framingham

Figure A2(b). Land use, Framingham quadrangle.

2







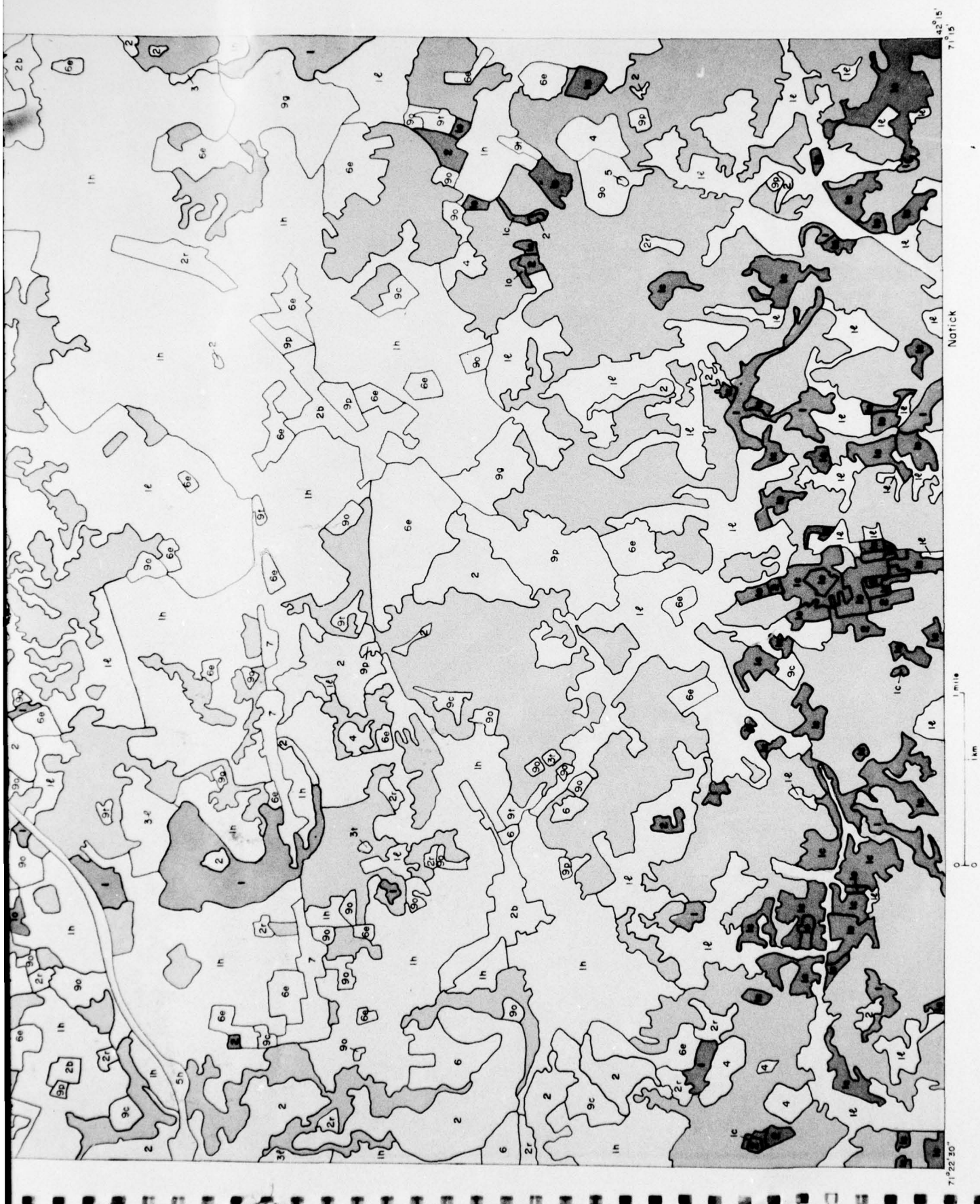


Figure A3(b). Land use, Natick quadrangle.





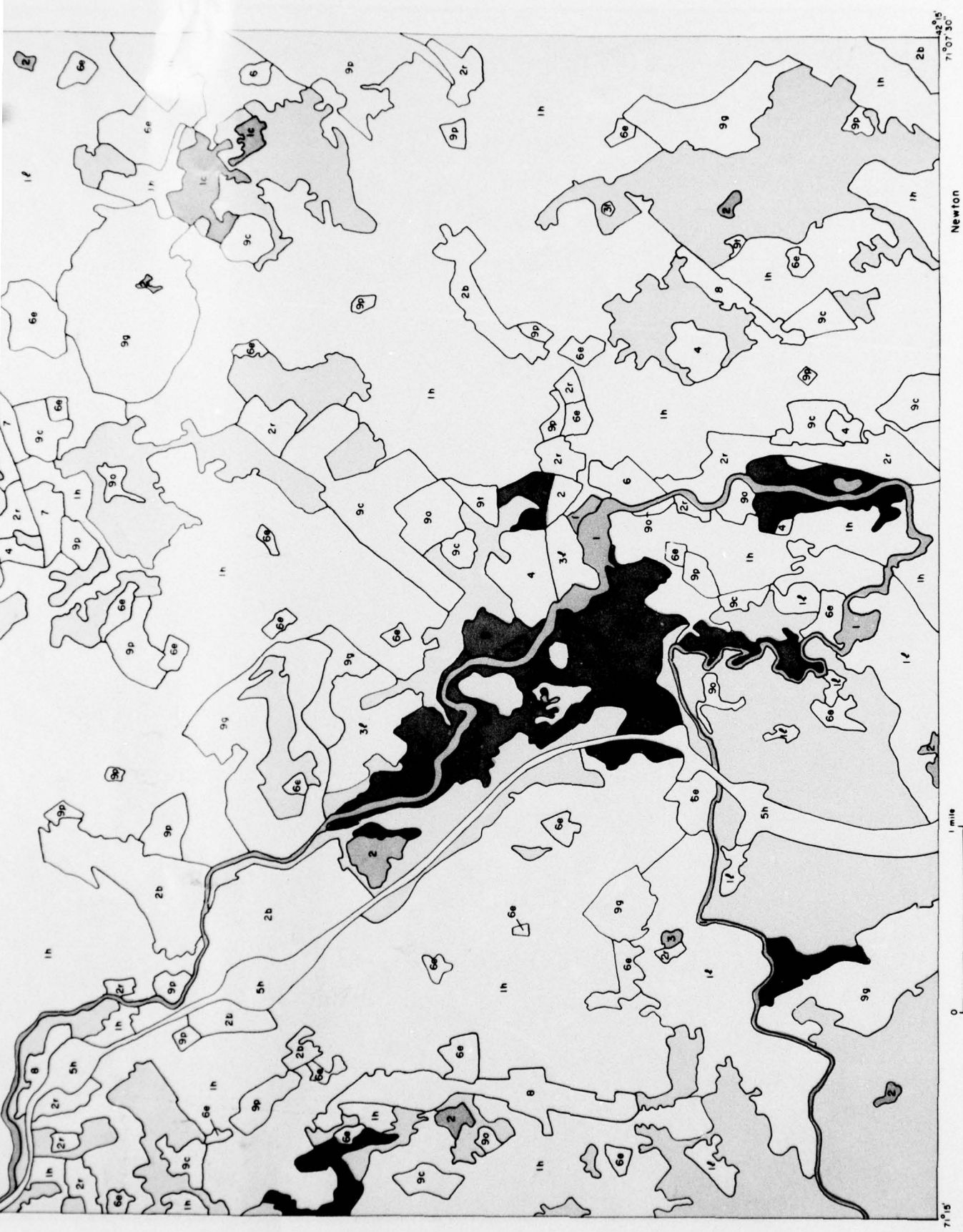


Figure A4(b). Land use, Newton quadrangle.





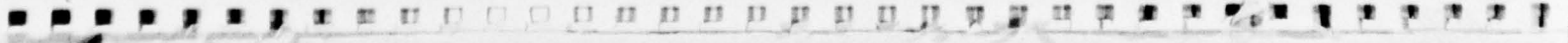
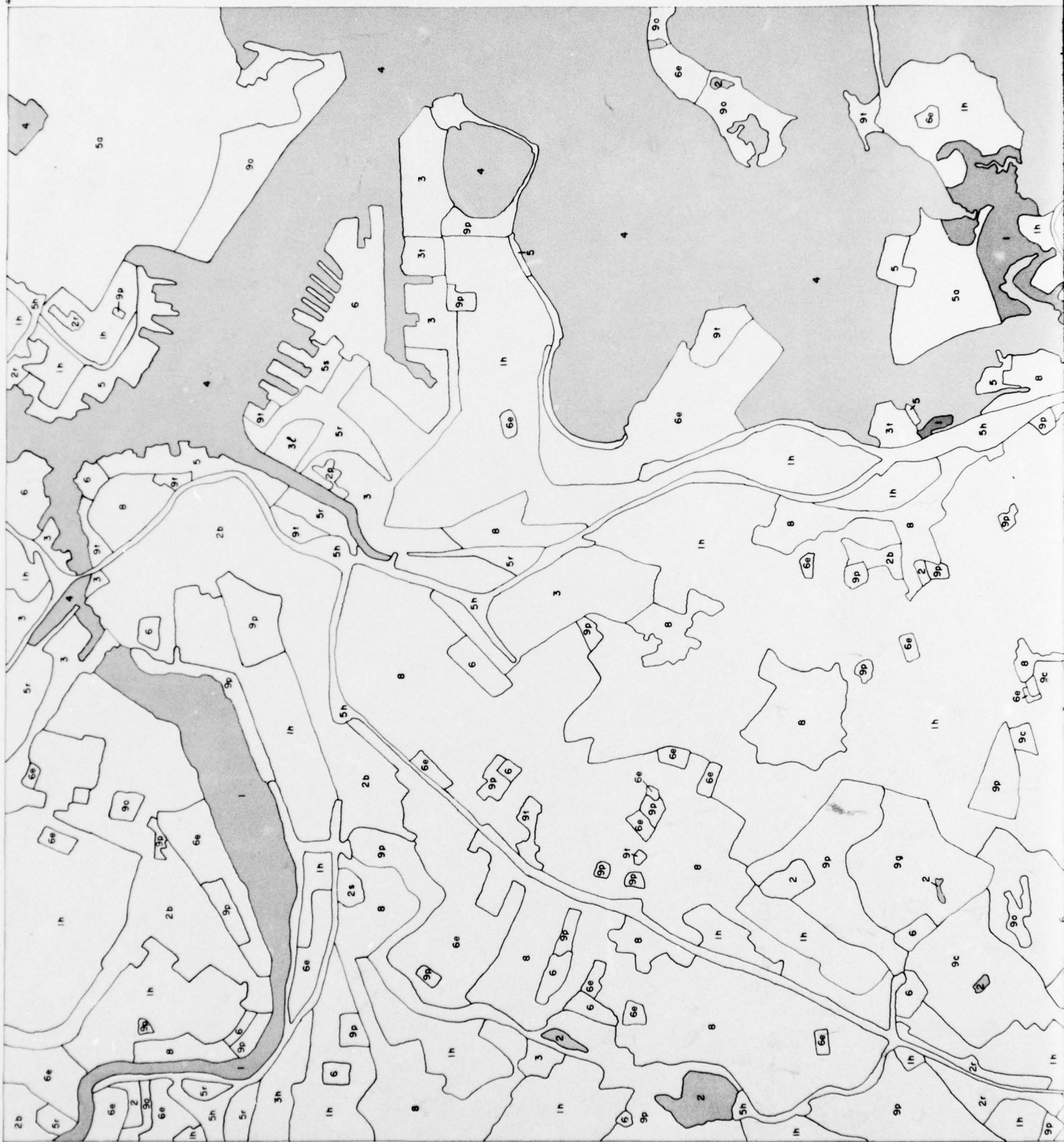
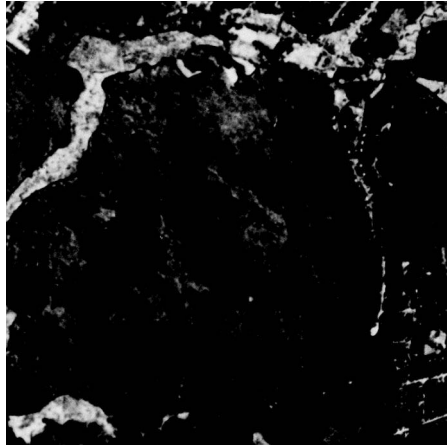
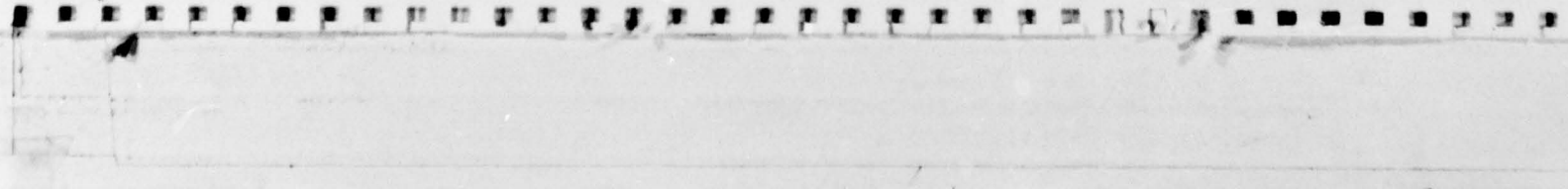
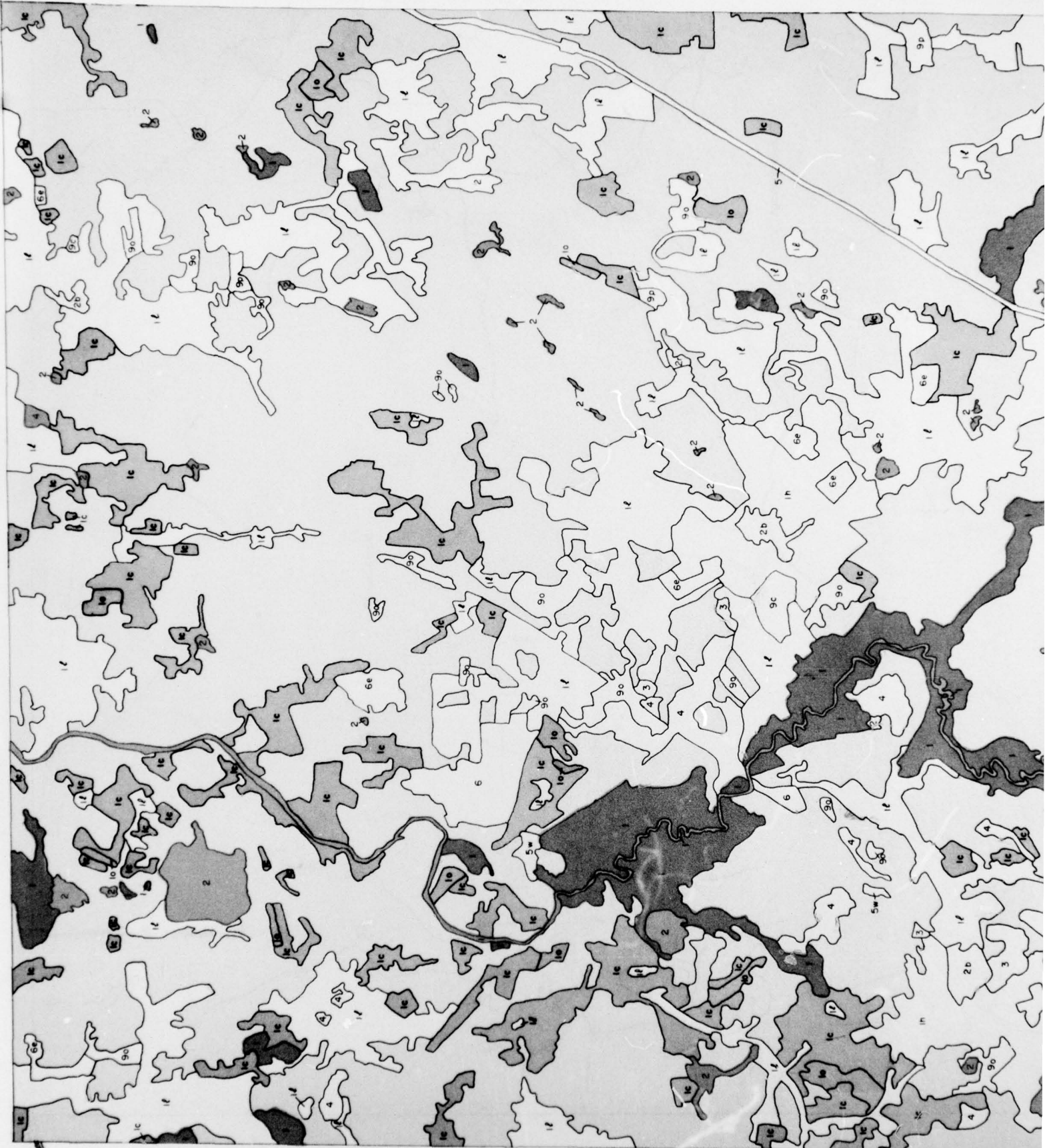


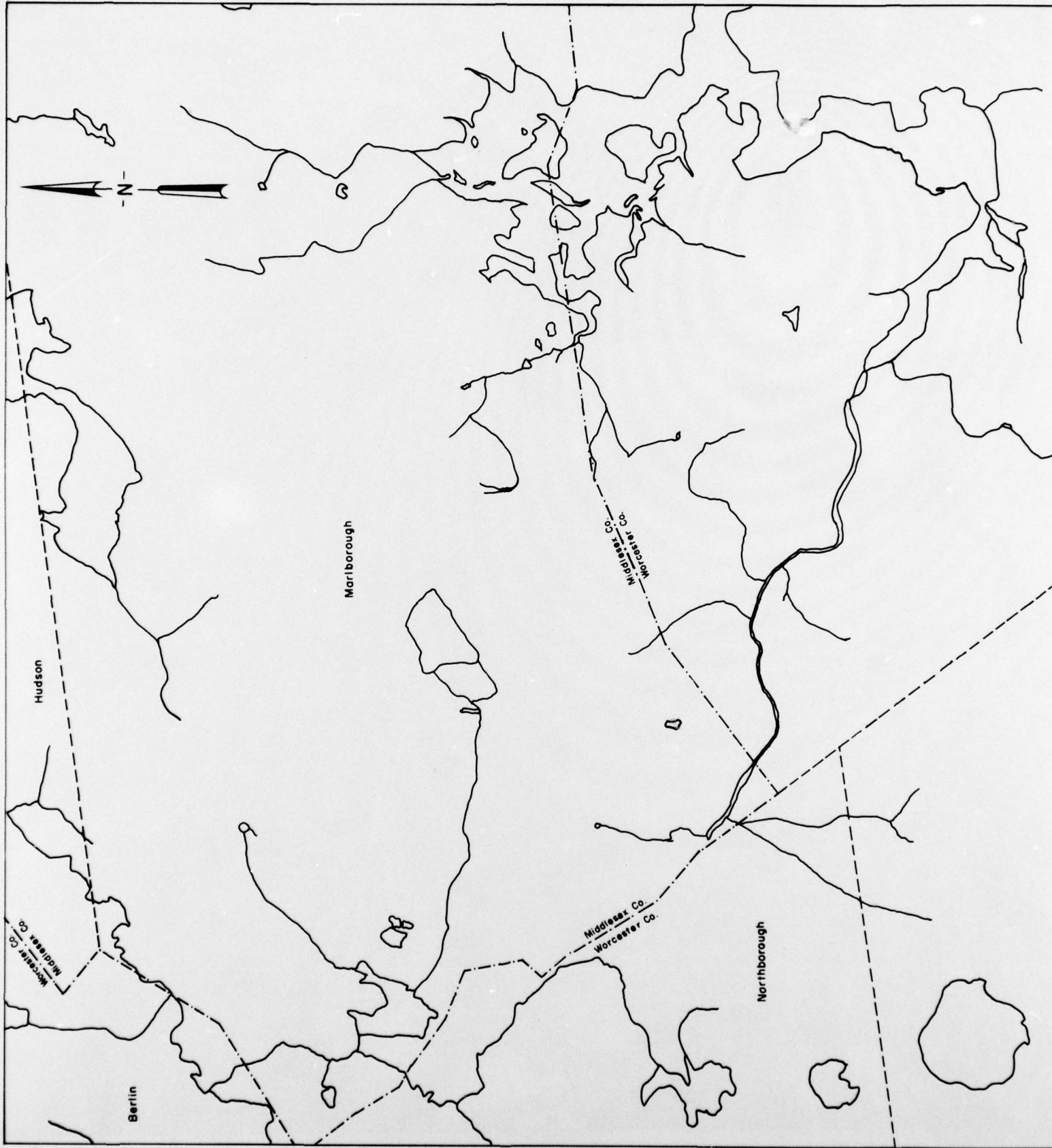


Figure A5(b). Land use, Boston South quadrangle.









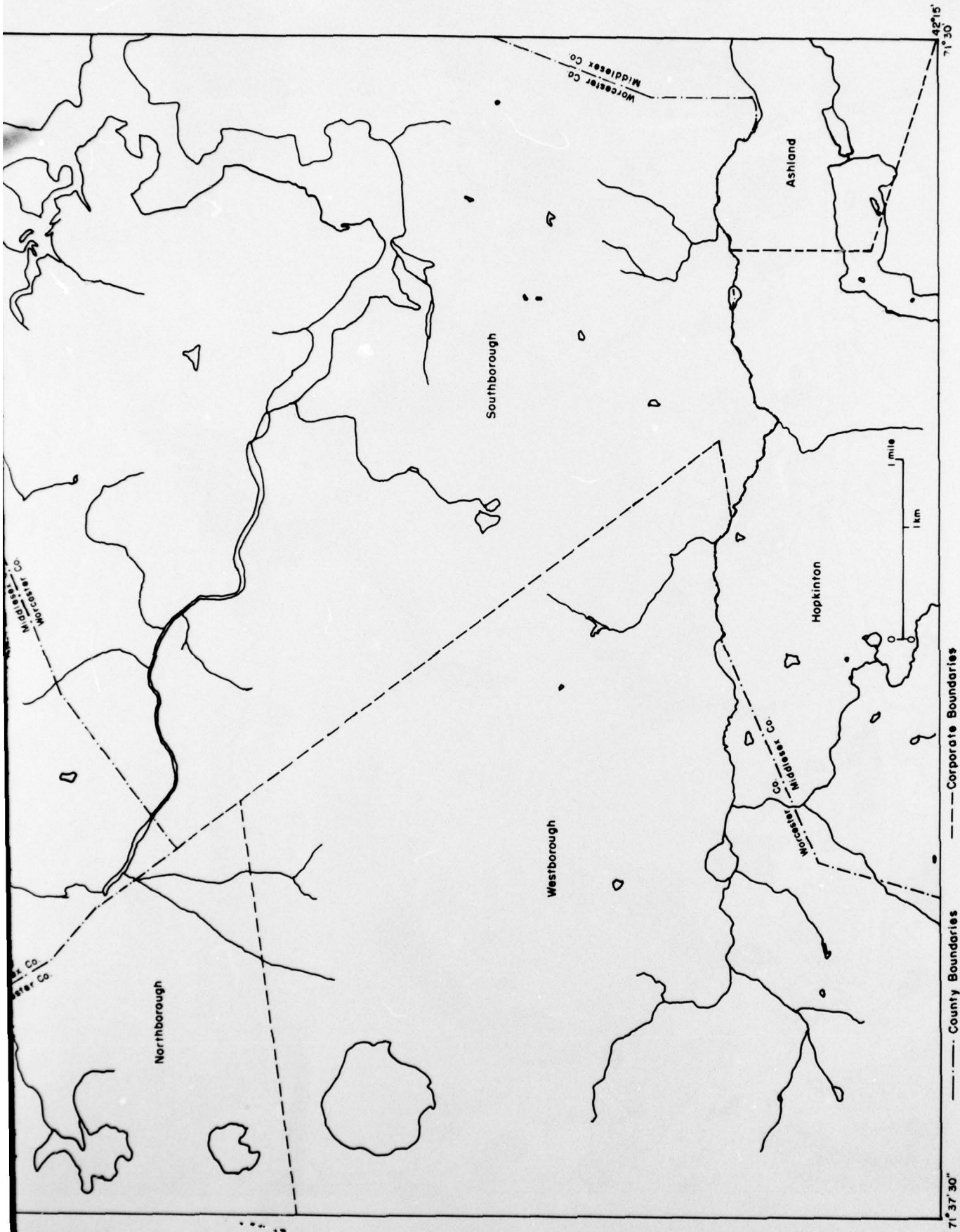
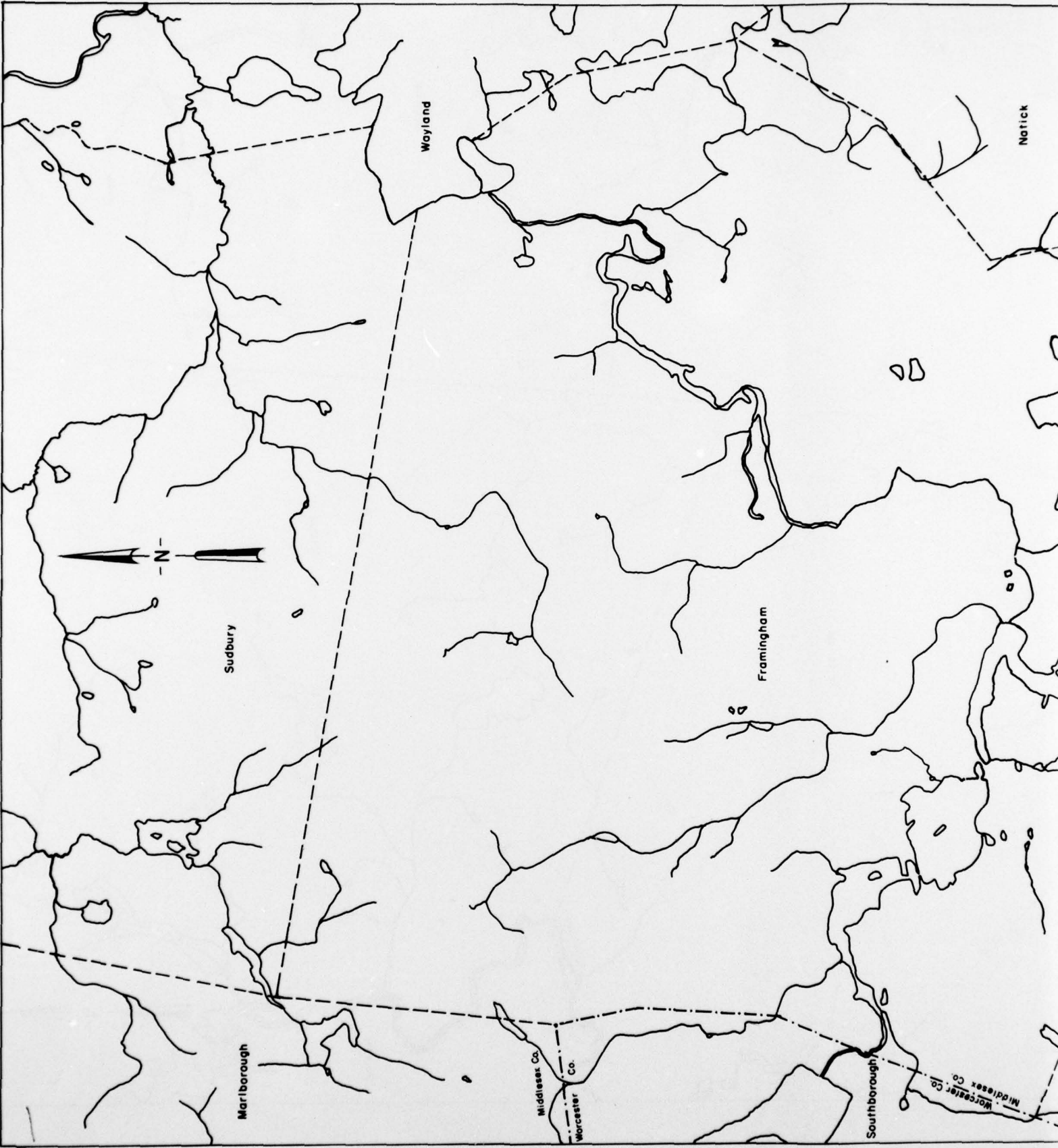


Figure A7. Hydrologic and political boundaries, Marlborough quadrangle.

42° 22' 30"



Natick

Sudbury

Framingham

Wayland

Mariborough

Southborough

Middlesex Co.

Worcester Co.

Worcester Co.
Middlesex Co.

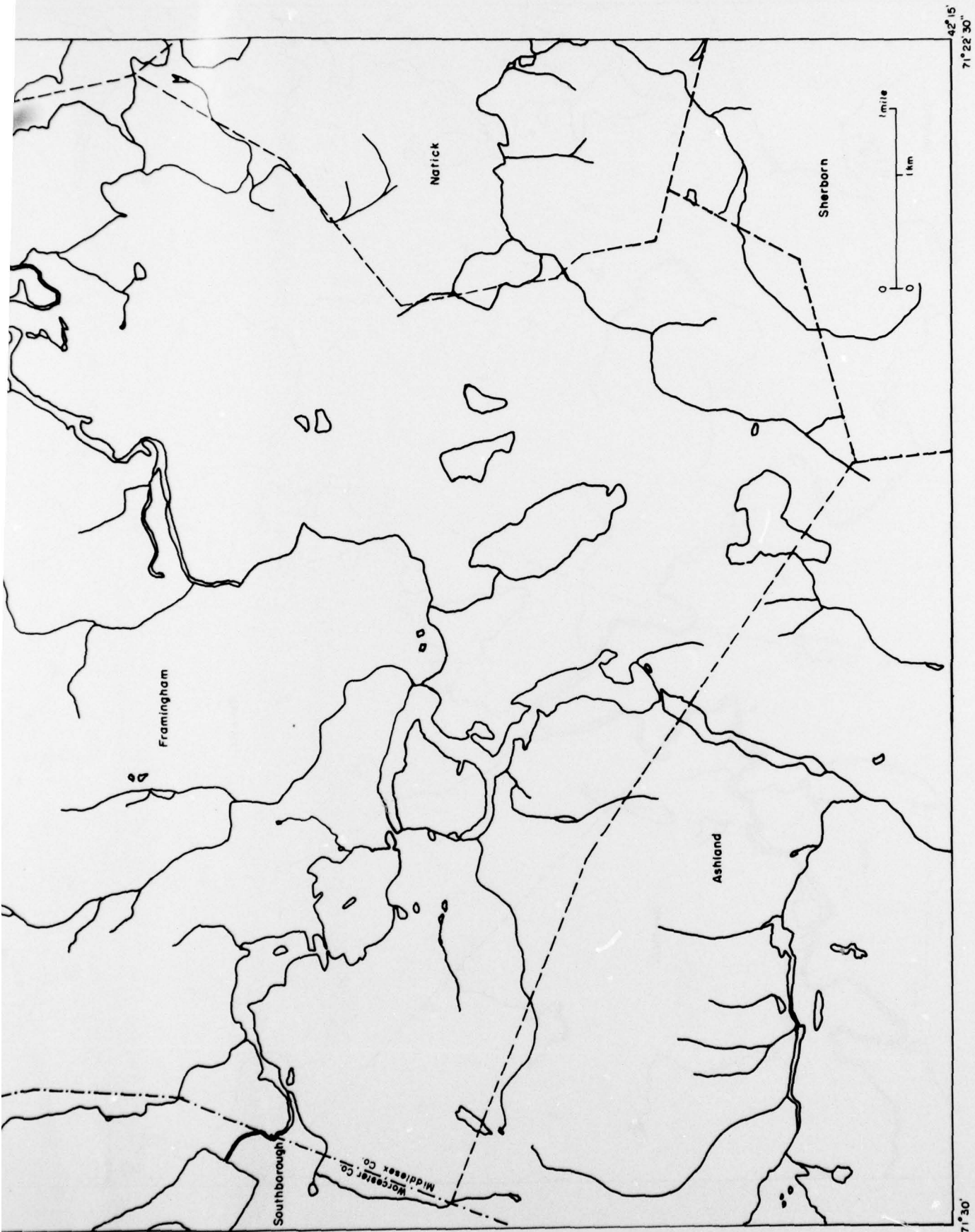
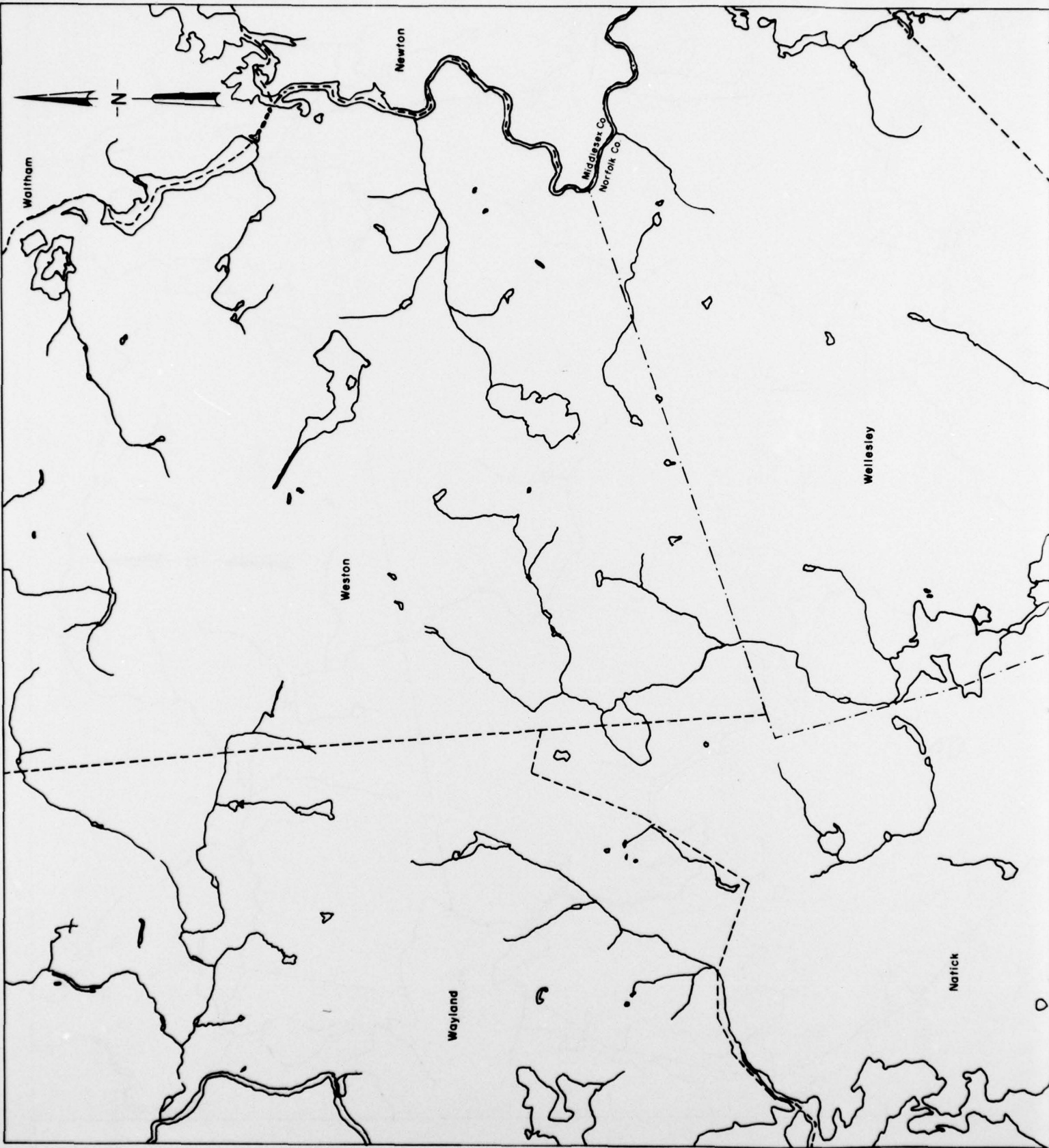


Figure A8. Hydrologic and political boundaries, Framingham quadrangle.

2



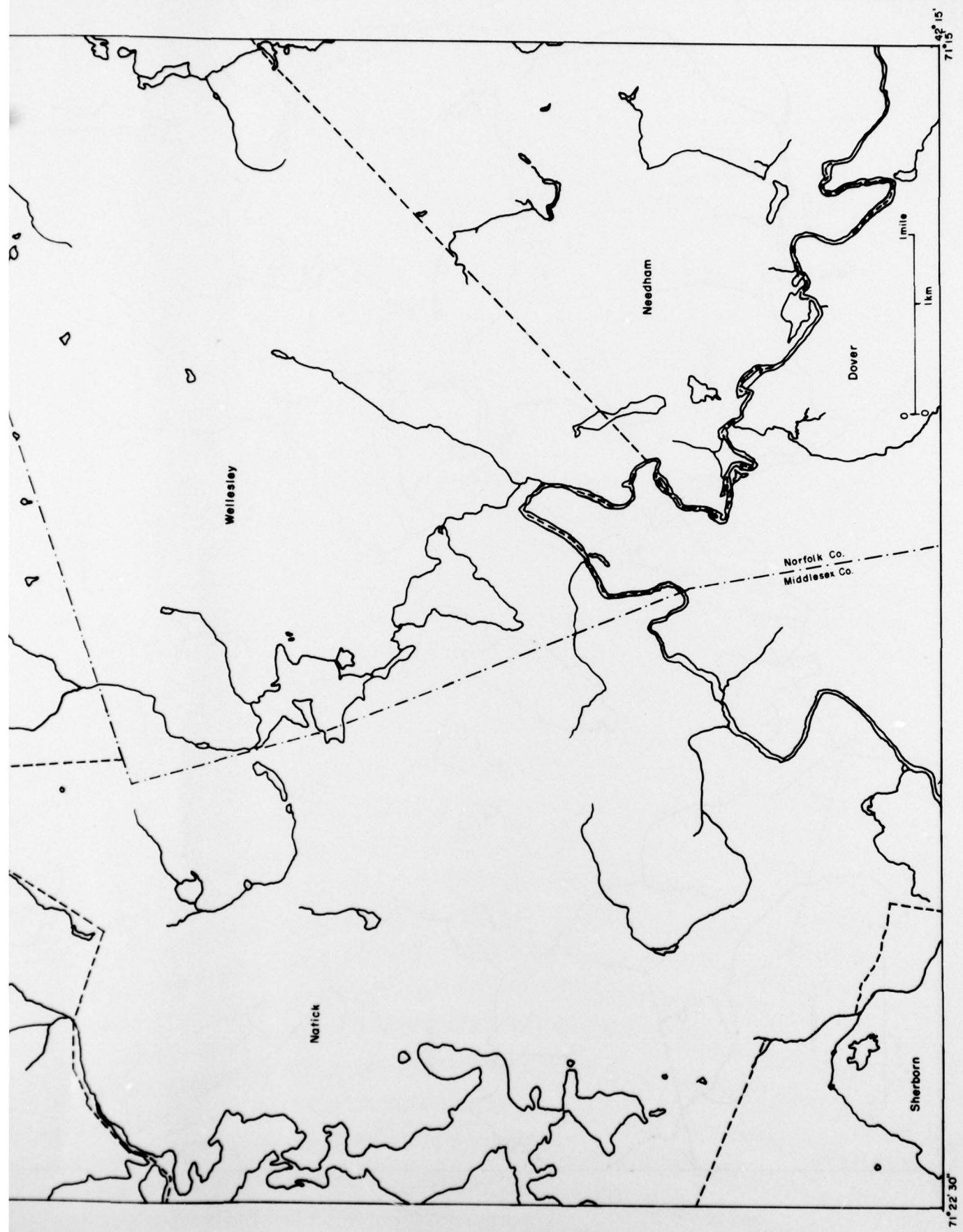
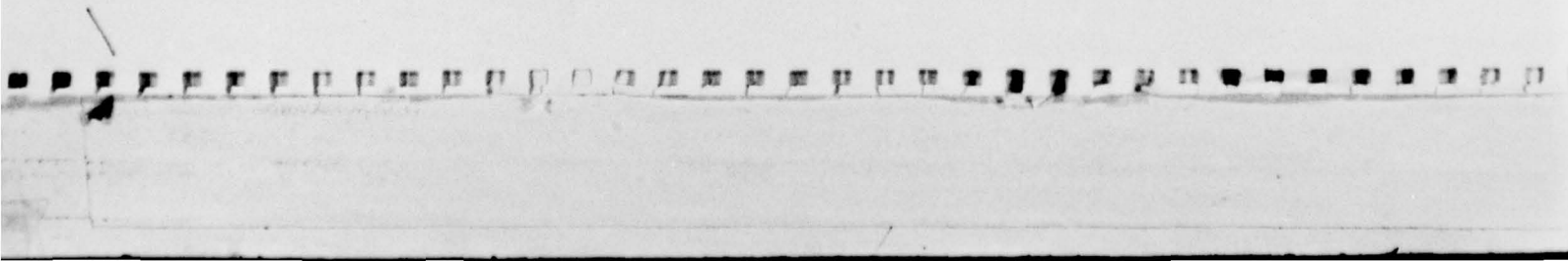
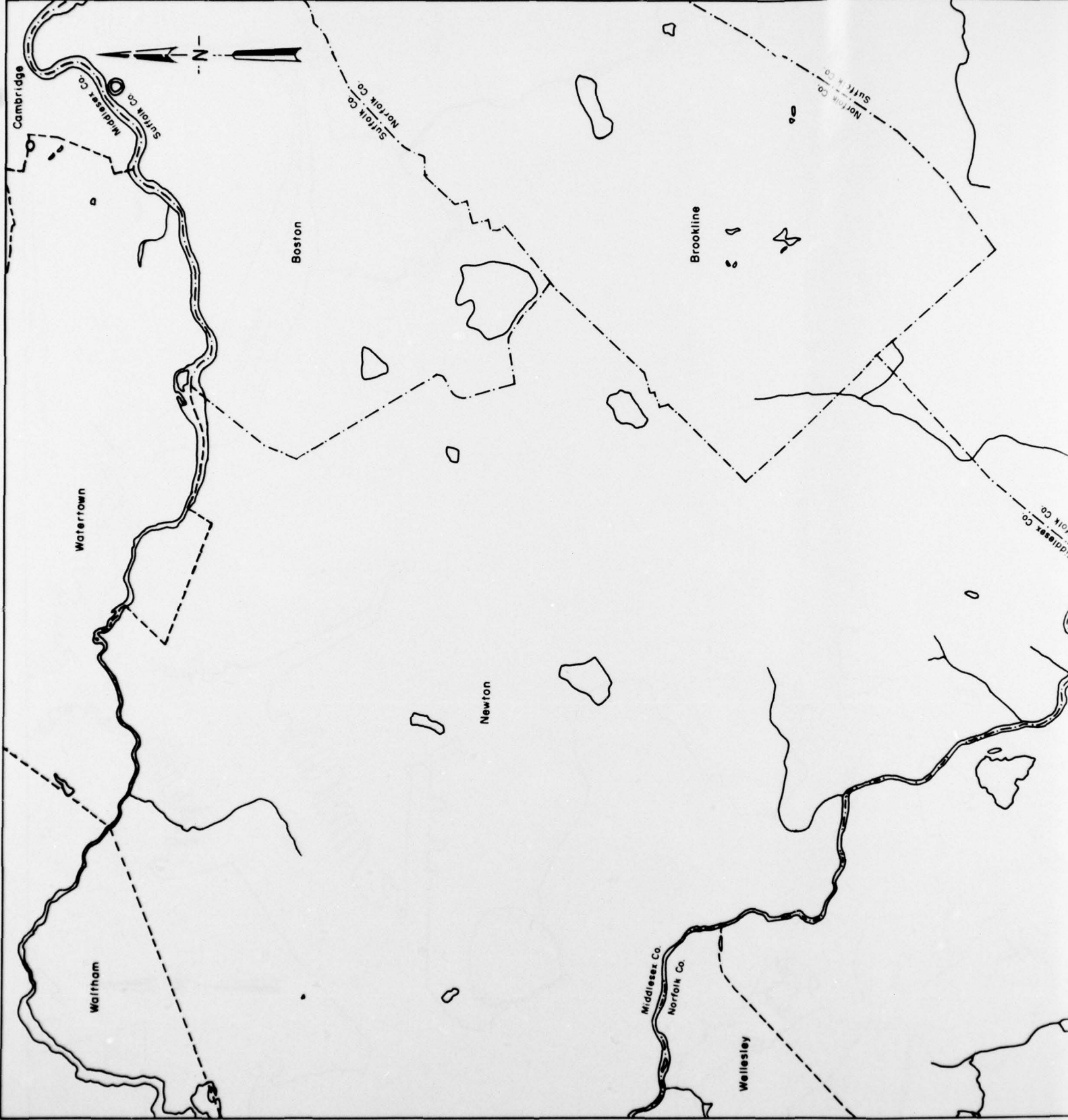


Figure A9. Hydrologic and political boundaries, Natick quadrangle.



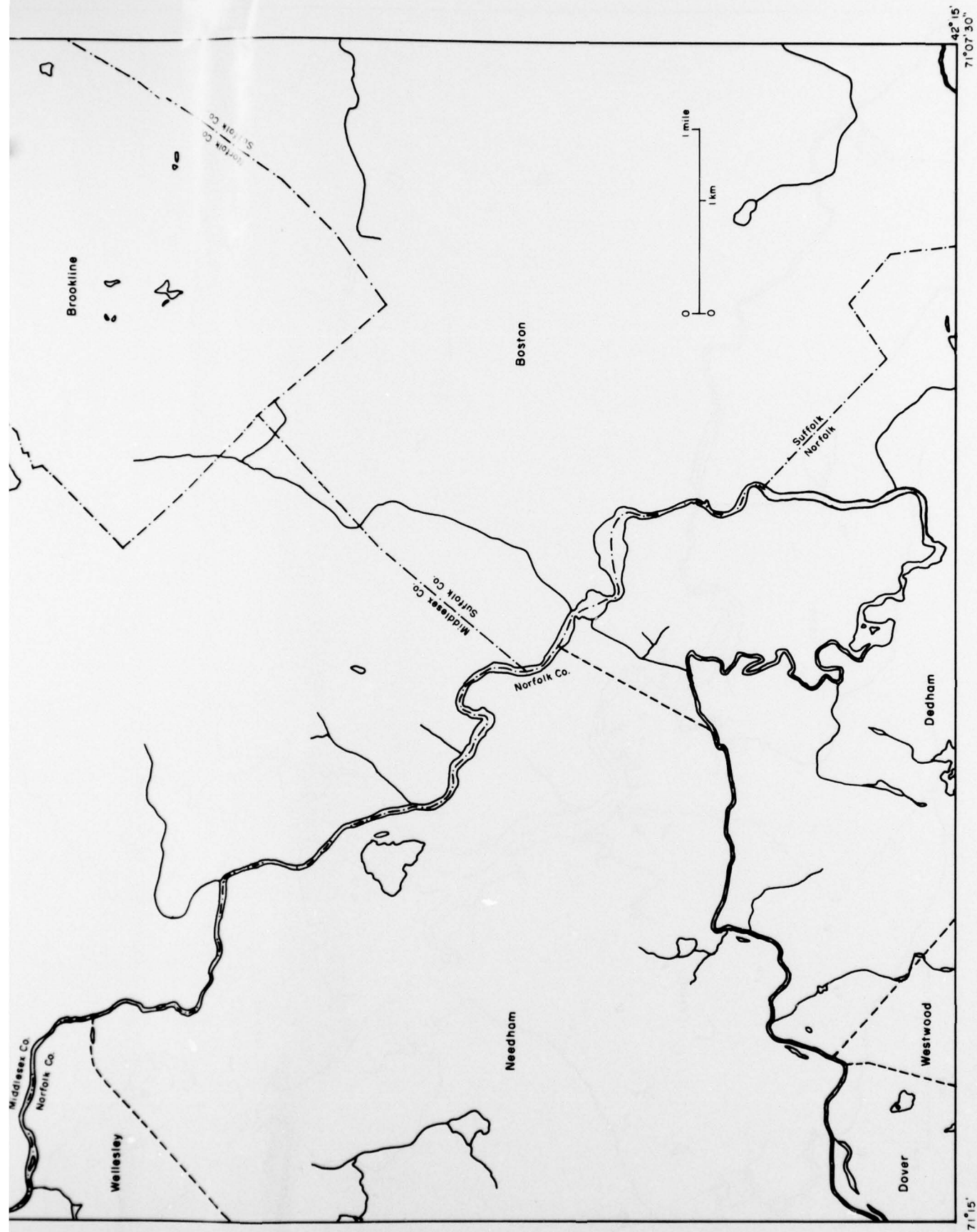
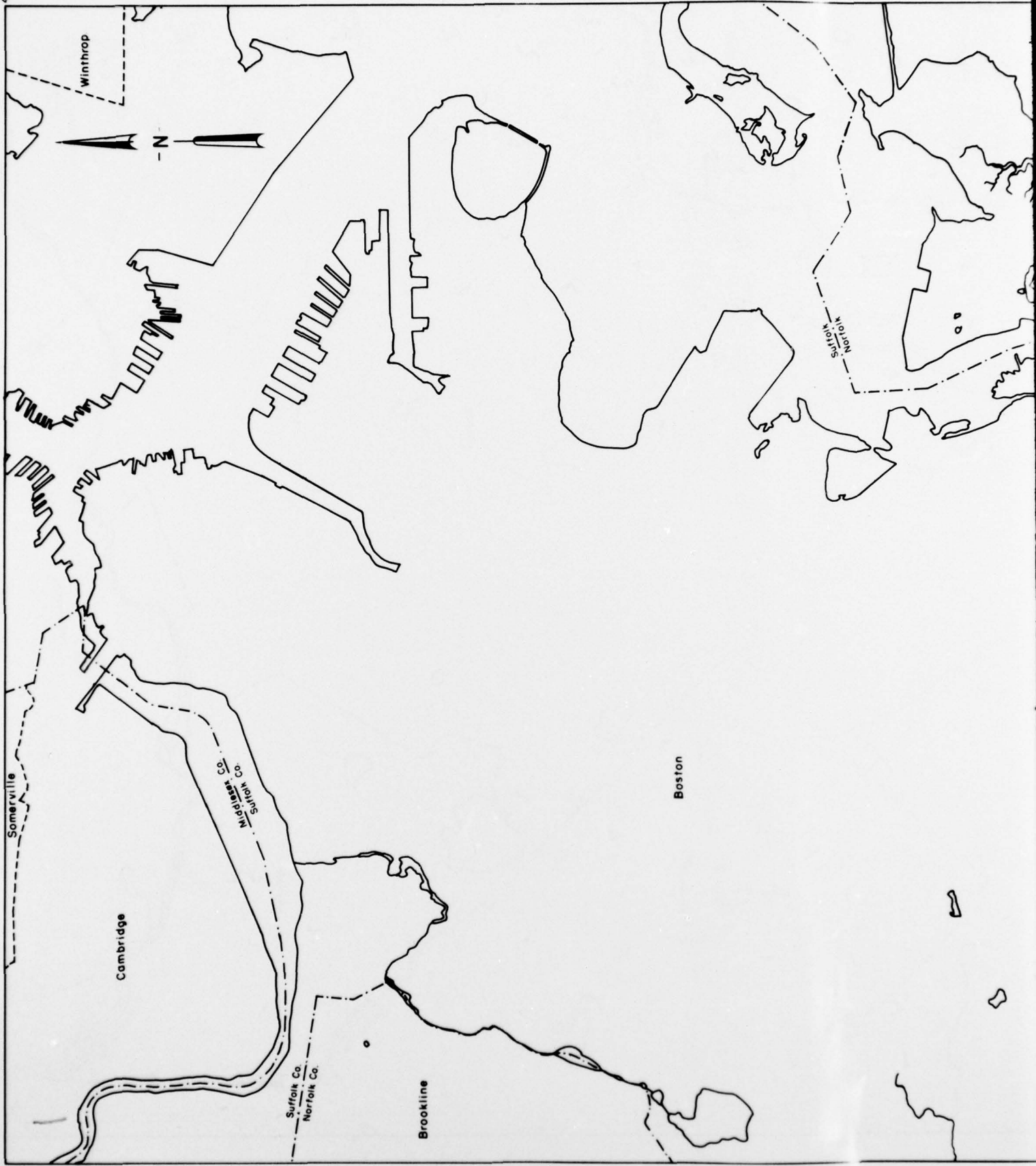


Figure A10. Hydrologic and political boundaries, Newton quadrangle.

2



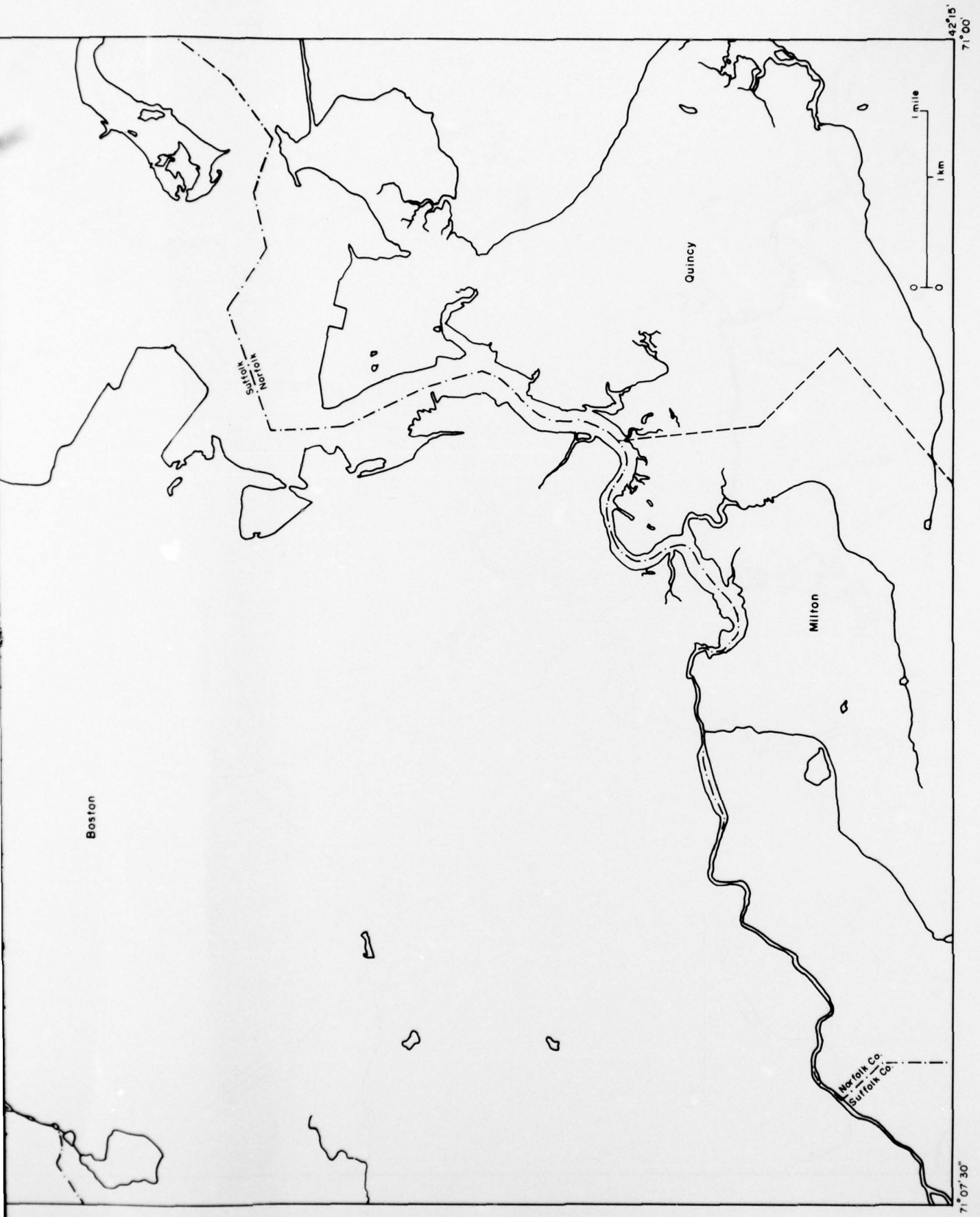
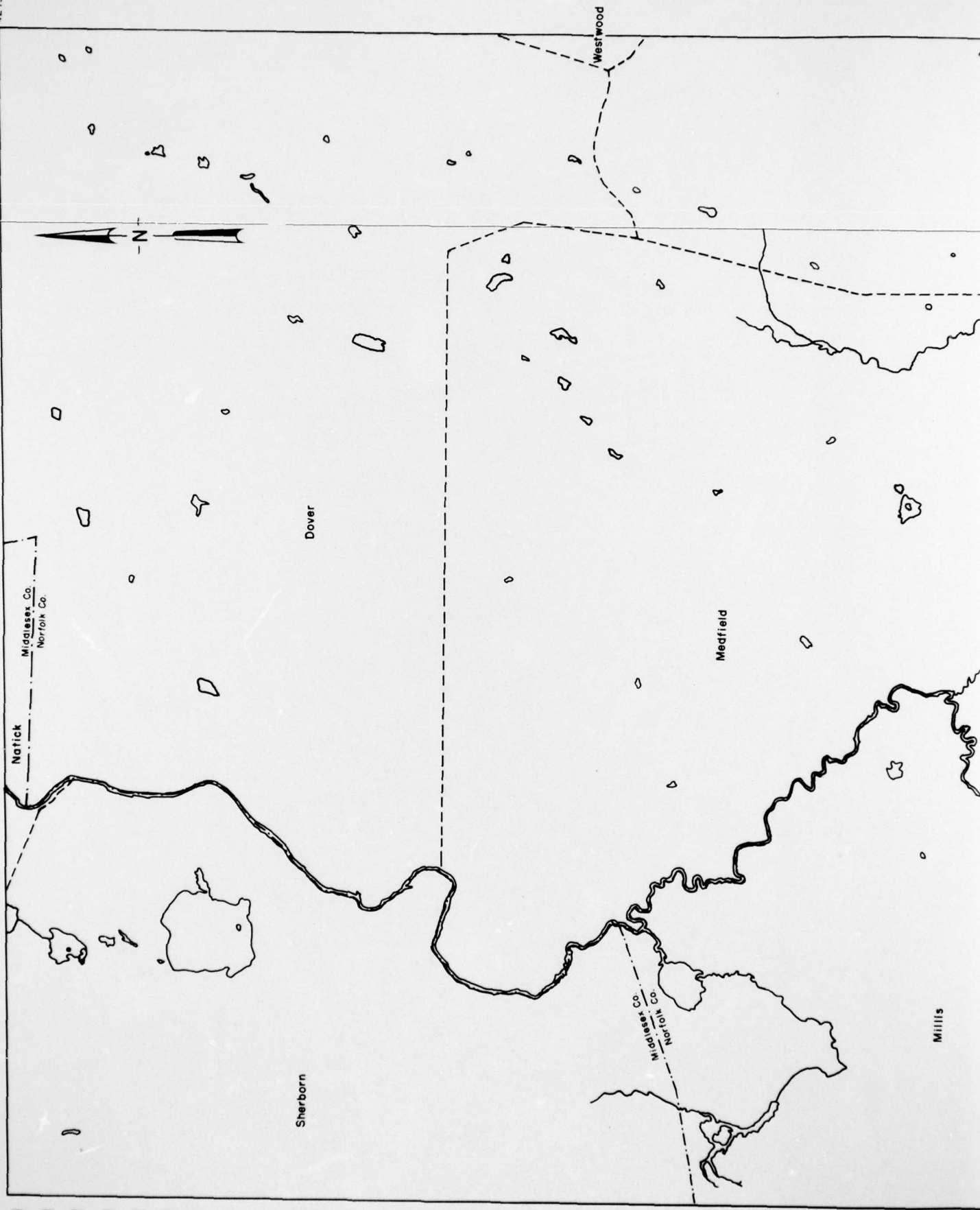


Figure A11. Hydrologic and political boundaries, Boston South quadrangle.

4275



Natick
Middlesex Co.
Norfolk Co.

Dover

Westwood

Medfield

Sherborn

Middlesex Co.
Norfolk Co.

Mills

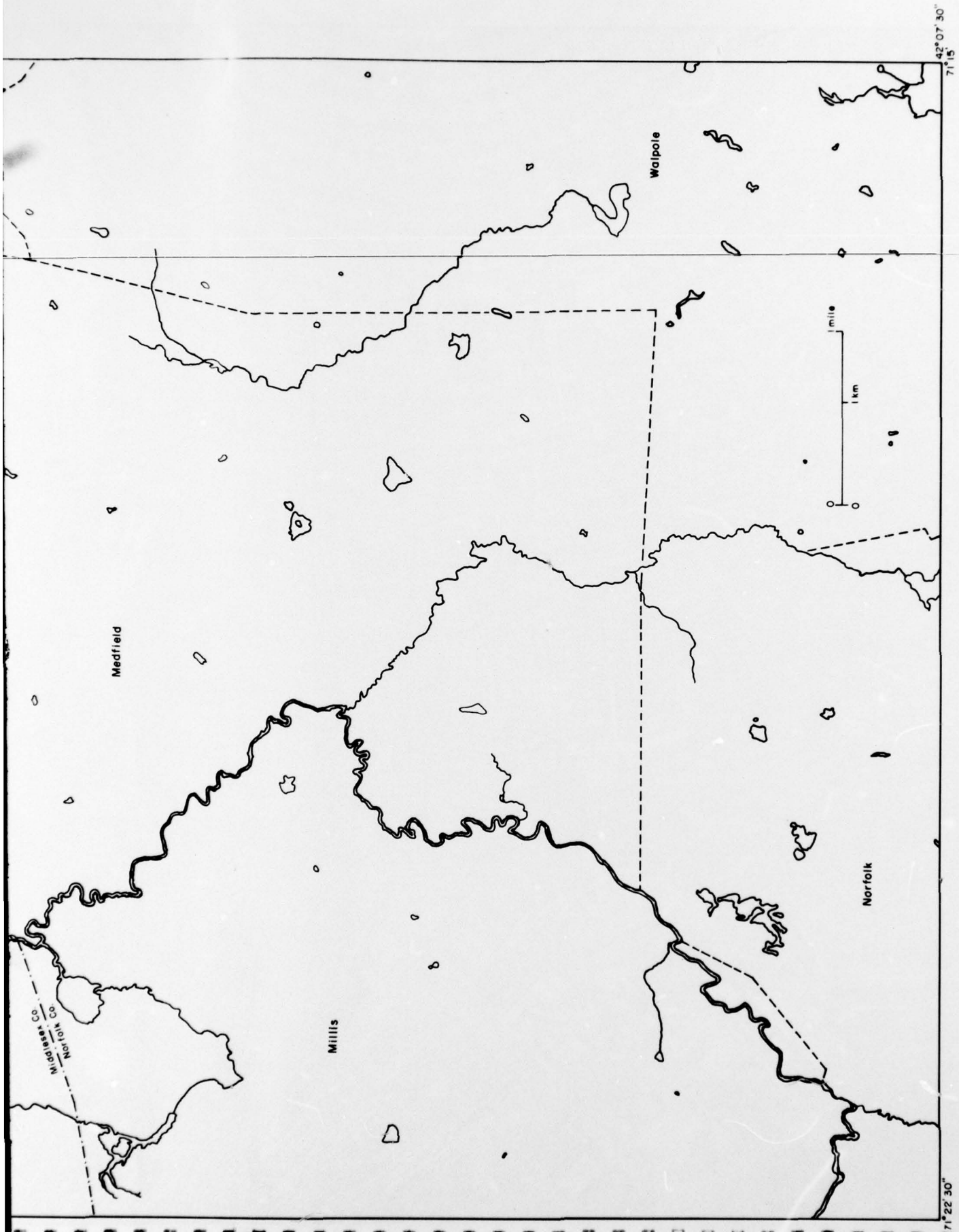


Figure A12. Hydrologic and political boundaries, Medfield quadrangle.









211







Figure B4. Impervious surfaces, Newton site.





Figure C1. Car density obtained by photointerpretation, Newton site.



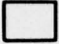

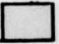
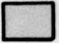




Figure C2. Ground truth map of curb density, Newton site.

Land use classification system (modified from Anderson et al. 1972).

Legend

Appendix A.

Level I	Level II	Level III
 U. Urban and built-up land	1. Residential	h. high density (> 3 families/acre) l. low density (< 3 families/acre)
	2. Commercial and services	b. business, central urban r. retail trade and offices
	3. Industrial	l. light industry t. tank farms
	4. Extractive	
	5. Transportation, communications and utilities	a. airports r. railroads h. limited access highways w. water treatment plants
	6. Institutional	e. educational campuses
	7. Strip and clustered settlement	
	8. Mixed	
	9. Open and other	g. golf courses c. cemeteries t. transitional areas under construction p. parks o. open
 A. Agricultural land	1. Cropland and pasture	o. open, barren c. closed, vegetated
	2. Orchards	
 F. Forest land	1. Mixed	
 W. Water	1. Streams and waterways	
	2. Lakes	
	3. Reservoirs	
	4. Bays and estuaries	
 N. Nonforested wetlands	1. Vegetated	
	2. Bare	
 B. Barren land		

27