

AD-A050 113

TERRA TEK INC SALT LAKE CITY UTAH

F/6 19/4

CHARACTERIZATION OF SEVERAL MATERIALS FOR PENETRATION EVALUATIO--ETC(U)

UNCLASSIFIED

JUL 77 D O ENNISS, S W BUTTERS, R K DROPEK

DNA001-76-C-0217

TR-77-34

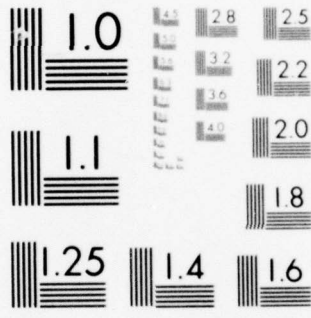
DNA-4410F

NL

| OF |  
AD  
A050113



END  
DATE  
FILMED  
3 -78  
DDC



MICROCOPY RESOLUTION TEST CHART  
NATIONAL BUREAU OF STANDARDS-1963-A

AD-E300 113

NO. 4412

12

AD A 050113

CHARACTERIZATION OF TENSILE BEHAVIOR OF  
FIBERGLASS REINFORCED POLYESTER

1. INTRODUCTION

2. EXPERIMENTAL PROCEDURE

3. RESULTS AND DISCUSSION

4. CONCLUSIONS

5. REFERENCES

6. APPENDICES

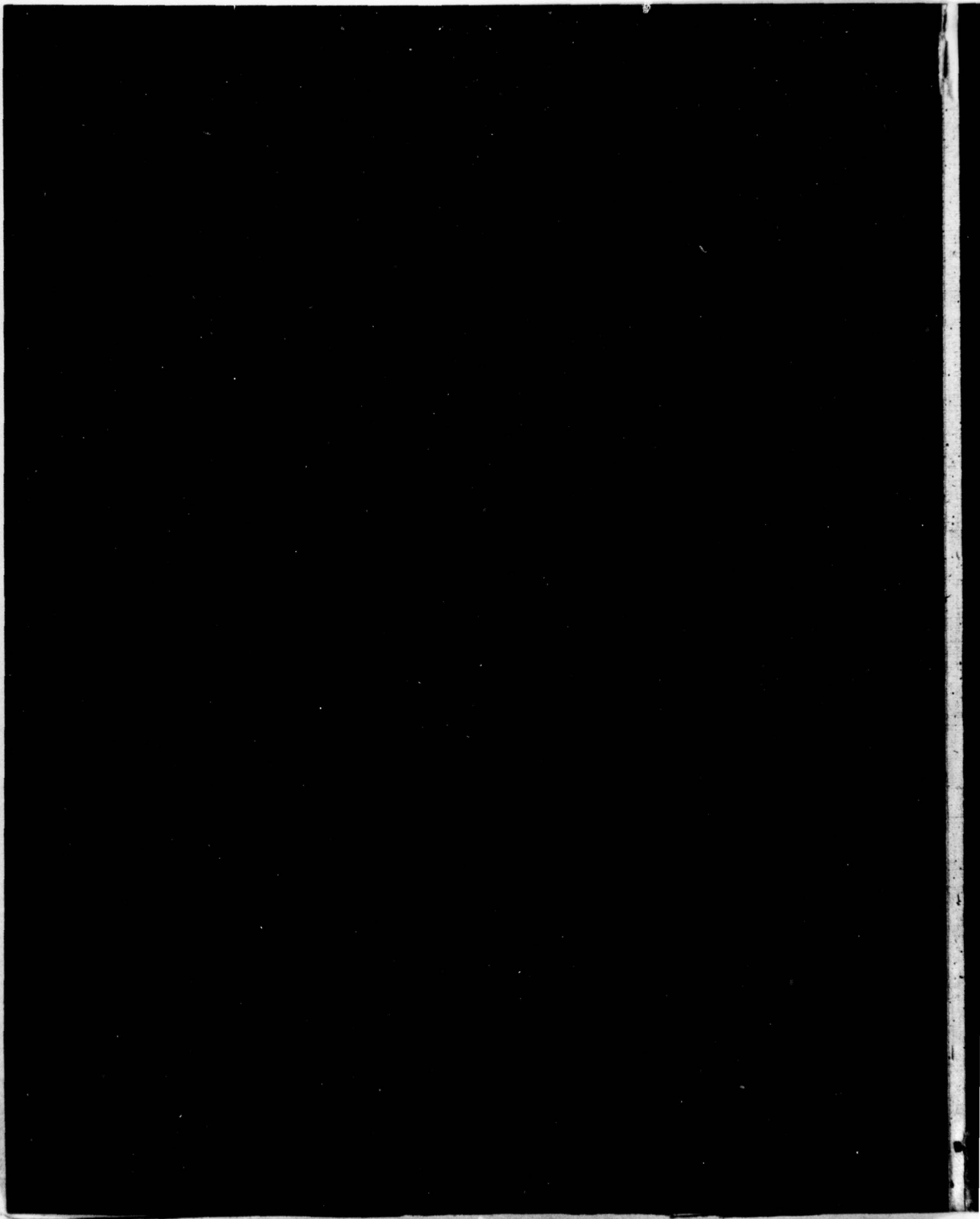
7. SYMBOLS

8. NOMENCLATURE

9. SUMMARY

10. AUTHOR'S ADDRESS

DDC  
RECEIVED  
FEB 17 1978  
B



UNCLASSIFIED

(18) DNA, SBIE

(19) 4410F, AD-E300 083

SECURITY CLASSIFICATION OF THIS PAGE (When Data Entered)

REPORT DOCUMENTATION PAGE		READ INSTRUCTIONS BEFORE COMPLETING FORM	
1. REPORT NUMBER DNA 4410F ✓	2. GOVT ACCESSION NO.	3. RECIPIENT'S CATALOG NUMBER rept.	
4. TITLE (and Subtitle) 6 CHARACTERIZATION OF SEVERAL MATERIALS FOR PENETRATION EVALUATION ANALYSIS.		9	5. TYPE OF REPORT & PERIOD COVERED Final / Jan - Dec 76
7. AUTHOR(s) 10 D.O./Ennis → A.H./Jones S.W./Butters R.K./Dropek		14	6. PERFORMING ORG. REPORT NUMBER TR-77-34
9. PERFORMING ORGANIZATION NAME AND ADDRESS Terra Tek, Inc. ✓ 389 155 420 Wakara Way Salt Lake City, Utah		15	8. CONTRACT OR GRANT NUMBER(s) DNA 001-76-C-0217/new
11. CONTROLLING OFFICE NAME AND ADDRESS Director Defense Nuclear Agency ✓ Washington, D.C. 20305		16	10. PROGRAM ELEMENT, PROJECT, TASK AREA & WORK UNIT NUMBERS Y99QAXSB048 - 21 17 B048
14. MONITORING AGENCY NAME & ADDRESS (if different from Controlling Office)		11	12. REPORT DATE Jul 77 12 29 p.
		13. NUMBER OF PAGES 35	
		15. SECURITY CLASS. (of this report) Unclassified	
		15a. DECLASSIFICATION/DOWNGRADING SCHEDULE	
16. DISTRIBUTION STATEMENT (of this Report) Approved for public release; distribution unlimited.			
17. DISTRIBUTION STATEMENT (of the abstract entered in Block 20, if different from Report) B			
18. SUPPLEMENTARY NOTES This work sponsored by the Defense Nuclear Agency under RDT&E RMSS Code B344076464 Y99QAXSB04825 H2590D.			
19. KEY WORDS (Continue on reverse side if necessary and identify by block number) Material Properties Earth Penetrators			
20. ABSTRACT (Continue on reverse side if necessary and identify by block number) Results of material property testing relating to the earth penetrator program are reported. The report contains material properties on four material; MICA-50 potting compound and three different man made target materials - sand mix, gypsum, and concrete. ↑			

DDC  
RECEIVED  
FEB 17 1978  
B

TABLE OF CONTENTS

	<u>Page</u>
Abstract . . . . .	i
Table of Contents . . . . .	1
List of Illustrations . . . . .	3
List of Tables . . . . .	4
Introduction . . . . .	5
Material Description and Preparation . . . . .	7
Test Results . . . . .	9
MICA-50 Test Program . . . . .	9
AVCO Sand Mix Test Program . . . . .	16
Gypsum Test Program . . . . .	17
University of New Mexico Concrete Test Program . . . . .	24
References . . . . .	29
Distribution List . . . . .	31

BLANK PAGE

ACCESSION for		
NTIS	White Section	<input checked="" type="checkbox"/>
DDC	Buff Section	<input type="checkbox"/>
UNANNOUNCED		<input type="checkbox"/>
JUSTIFICATION _____		
BY _____		
DISTRIBUTION/AVAILABILITY CODES		
Dist.	AVAIL.	and/or SPECIAL
A		

PRECEDING PAGE BLANK-NOT FILLED

## LIST OF ILLUSTRATIONS

<u>Figure</u>	<u>Description</u>	<u>Page</u>
1	Definition of yield stress and Young's modulus . . . . .	10
2	MICA-50 - Tension test results . . . . .	12
3	MICA-50 - Unconfined compression test results . . . . .	12
4	MICA-50 - Yield stress versus log strain rate of unconfined compression tests . . . . .	13
5	MICA-50 - Cycled unconfined compression test; strain rate of $10^{-2}$ in/in/sec . . . . .	13
6	MICA-50 - Hydrostatic compression test results . . . . .	14
7	MICA-50 - Triaxial compression test results . . . . .	14
8	MICA-50 - Failure envelope . . . . .	15
9	MICA-50 post-test triaxial compression samples; confin- ing pressures of 0.25, 1.0 and 4.0 kilobars . . . . .	15
10	AVCO Sand Mix - Hydrostatic compression . . . . .	16
11	AVCO Sand Mix - Triaxial compression . . . . .	17
12	Gypsum - Unconfined compression . . . . .	18
13	Gypsum - Hydrostatic response to 4 kilobars . . . . .	20
14	Gypsum - Triaxial compression . . . . .	21
15	Gypsum - Failure envelope . . . . .	22
16a	Gypsum - Uniaxial strain test . . . . .	23
16b	Gypsum - Uniaxial strain test . . . . .	23
17	Gypsum - Triaxial extension . . . . .	24
18	University of New Mexico Concrete - Unconfined com- pression . . . . .	25

PRECEDING PAGE BLANK-NOT FILLED

<u>Figure</u>	<u>Description</u>	<u>Page</u>
19	University of New Mexico Concrete - Hydrostatic compression . . . . .	25
20	University of New Mexico Concrete - Triaxial compression results . . . . .	26
21	University of New Mexico Concrete - Failure envelope . . . . .	27

LIST OF TABLES

<u>Table</u>	<u>Description</u>	<u>Page</u>
I	Sample Dimensions . . . . .	8
II	MICA-50 Potting Compound Test Results . . . . .	10

## INTRODUCTION

As part of the Defense Nuclear Agency's Earth Penetrator Program, material properties were measured for the evaluation of penetrator performance. The material properties of welded tuff and sandstone from two projectile penetration field sites, Mt. Helen and San Ysidu, were reported previously. More recent material characterization programs, for which the data is reported here, were conducted on a material comprising portions of the internal structure of the penetrator, MICA-50 potting compound, and on three man-made target materials: sand mix, gypsum and concrete.

The MICA-50 potting compound\* was developed by Sandia Laboratories and is used to protect internal components of the penetrator during periods of high acceleration and deceleration. Detailed material property data makes it possible to define the individual loading histories of the components and thus provides the means for evaluation of the material as an encapsulating medium. Mechanical properties of this material were determined by unconfined compression, unconfined tension, triaxial compression and hydrostatic compression tests. Strain rate tests were also conducted to observe possible variation in moduli and yield stress with change of strain rate. The data obtained in this test program was previously reported in Terra Tek report TR 76-4, February 1976.

The first man-made target material evaluated was a sand mix developed by AVCO Corporation for reverse ballistic testing of instrumented half-scale penetrators. The material property testing conducted by the Waterways

---

\* Preliminary results for the MICA-50 test program were reported previously in Terra Tek Report TR 76-4, entitled "Some Mechanical Properties of MICA-50 Potting Compound," by R. K. Dropek, S. W. Butters, and A. H. Jones.

Experiment Station (WES) was supplemented by Terra Tek, which performed tests to determine mechanical response at higher confining pressures. Triaxial compression tests were conducted at 1 and 4 kilobars confining pressure. Hydrostatic response was evaluated to 4 kilobars.

The second man-made target material evaluated was a gypsum of hydrostone and fiberglass, which has been developed as a standard target material for projectile penetration tests. Its homogenous and isotropic nature facilitates analysis of the effect of penetrator design changes on performance. The test program conducted on this material included: hydrostatic compression, unconfined compression, triaxial compression, uniaxial strain and triaxial extension tests.

A concrete fabricated by the University of New Mexico was the last man-made target material tested. Evaluation of the hydrostatic compression response and the determination of the failure envelope as a function of confining pressure were the primary material properties required. Additional properties tests were initially scheduled but the large sample aggregate limited the number of test samples.

## MATERIAL DESCRIPTION AND PREPARATION

The materials tested contrasted significantly. MICA-50, a rigid encapsulating resin, was sand colored and had a density of  $1.64 \text{ gm/cm}^3$ . The compound used in the AVCO testing contained sand, type 3 Portland cement and water (4.9%). Its small aggregate size (sand), made it appear homogeneous and the density of the material was  $2.06 \text{ gm/cm}^3$ . The man-made gypsum of hydrostone and fiberglass had a density of  $2.03 \text{ gm/cm}^3$ ; 1.89% was water. The fiberglass components were small, chopped strands distributed randomly in the mix. The University of New Mexico concrete penetration slab was poured from a mix per cubic yard of:

Coarse aggregate	1674 lbs.
Fine aggregate	1041 lbs.
Type 1 Portland cement	738 lbs.
Water	295 lbs.

It was poured August 5, 1976 and had an air content of 5 percent with a slump of  $2\frac{1}{2}$  inches. The concrete was sprayed with a resin based curing compound and was covered with a polyethylene sheet. The samples for testing were cured identically.

The specimens for all of the materials tested were cylindrical, except those for the MICA-50 tension test which were dog-bone shaped. The AVCO samples were stored at a temperature and humidity to coincide with handling by WES; no special storage instructions were received or implemented on the other specimens. Following coring and grinding each sample was carefully inspected for large surface and near surface air

voids which could result in a jacket puncture during pressurization. These voids were opened, cleaned and filled with a quick setting grout. When the surface voids were large and numerous, as with the University of New Mexico concrete, special procedures were warranted: the sample was wrapped with a dense, foam tape (with appropriate circular locations cut in the tape to allow strain measurement), jacketed with polyurethane and then the surface was sealed with a special solvent resistant silicone rubber compound. Ordinary sample jacketing was accomplished with several wraps of polyurethane which was sealed to steel end caps with lock wire.

Table I which lists the sample dimensions follows.

TABLE I  
Sample Dimensions

Material	Test Type	Dimensions
MICA-50 <sup>1</sup>	Compression	0.75 ± 0.005" Dia. x 1.50 ± 0.02" Length (1.91 ± 0.013 cm) (3.81 ± 0.05 cm)
MICA-50	Tension*	0.30 ± 0.001" Dia. x 0.60 ± 0.01" Length (0.76 ± 0.003 cm) (1.52 ± 0.025 cm)
AVCO Sand Mix <sup>1</sup>	Compression	0.75 ± 0.005" Dia. x 1.50 ± 0.02" Length (1.91 ± 0.013 cm) (3.81 ± 0.05 cm)
Gypsum <sup>1</sup>	Compression	0.75 ± 0.005" Dia. x 1.50 ± 0.02" Length (1.91 ± 0.013 cm) (3.81 ± 0.05 cm)
New Mexico Concrete <sup>2</sup>	Compression $\sigma_3 \leq 0.345$ kb	6.0 ± 0.01" Dia. x 10.0 ± 0.005" Length (15.24 ± 0.03 cm) (25.4 ± 0.013 cm)
New Mexico Concrete <sup>2</sup>	Compression $\sigma_3 > 0.345$ kb	4.0 ± 0.01" Dia. x 8.0 ± 0.005" Length (10.16 ± 0.03 cm) (20.32 ± 0.01 cm)

\* Gage length dimensions given, samples were dog-bone shaped.

1. Sample ends ground parallel to within 0.0005 in.
2. Sample ends ground parallel to 0.003 in. or better.

## TEST RESULTS

Each sample was placed in series with a strain gauged load cell within the loading frame to provide axial stress measurement during unconfined tests and stress difference during confined tests. The accuracy of the load cell was within 10 bars. The confining pressure, when present, was monitored by a manganin wire coil placed within the pressure cell and was accurate to within 10 bars.

Axial and transverse strains were measured with a strain gauged cantilever system. Strain measurement was accurate to 0.05% axial strain and 0.04% lateral strain. During the tension tests in the MICA-50 test program, strain gauges were bonded directly to the test samples.

With the exception of the MICA-50 test program, all stresses were applied quasi-statically at a constant rate of  $1 \times 10^{-4}$  in/in/sec. The strain rates used in the MICA-50 program are related in detail in the following section.

### MICA-50 Test Program

The mechanical properties needed to document the material behavior of the MICA-50 compound are Young's modulus ( $E$ ), Poisson's ratio ( $\nu$ ), bulk modulus ( $K$ ), and yield stress ( $\sigma_y$ ). These mechanical properties were obtained via unconfined compression and tension tests, triaxial compression tests, and hydrostatic compression tests. Strain rate tests were also conducted to observe possible changes in moduli and yield stress with variations in strain rate. Figure 1 shows the manner in which these  $E$ ,  $\nu$ , and  $\sigma_y$  are defined in this test program. The test results are summarized in Table II.

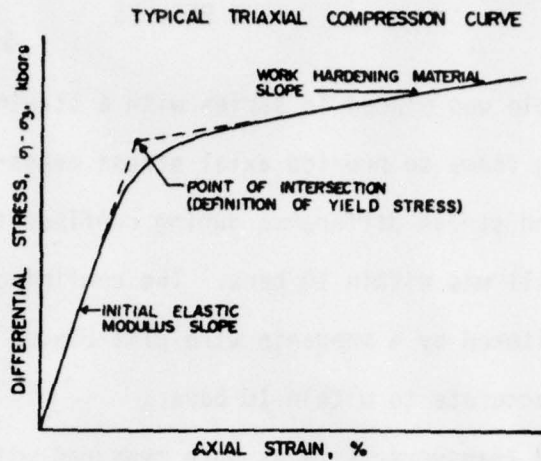


Figure 1. Definition of yield stress and Young's modulus.

TABLE II  
MICA-50 Potting Compound Test Results

TEST TYPE ( $\sigma_3 = \sigma_2$ )	STRAIN RATE in/in/sec	YOUNG'S MODULUS (E), Kb, $\pm 4Kb$	POISSON'S RATIO $\nu$ , $\pm .03$	YIELD STRESS Kb	% AXIAL STRAIN at yield stress	BULK MODULUS (K), Kb, $\pm 4Kb$
Tension ( $\sigma_3 = 0Kb$ )	$10^{-2}$	82	.33	0.54*	---	--
Triaxial Compression ( $\sigma_3 = 0Kb$ )	2	66	---	1.43	2.2	--
Triaxial Compression ( $\sigma_3 = 0Kb$ )	$10^{-1}$	66	---	1.17	2.0	--
Triaxial Compression ( $\sigma_3 = 0Kb$ )	$10^{-2}$	64	.37	1.08	1.7	--
Triaxial Compression ( $\sigma_3 = 0Kb$ )	$10^{-4}$	64	.37	0.92	1.5	--
Triaxial Compression ( $\sigma_3 = .25Kb$ )	$10^{-2}$	64	.33	1.12	1.7	--
Triaxial Compression ( $\sigma_3 = 1.0Kb$ )	$10^{-2}$	64	.33	1.21	2.0	--
Triaxial Compression ( $\sigma_3 = 4.0Kb$ )	$10^{-2}$	65	.37	1.35	2.1	--
Hydrostatic Compression	$6 \times 10^{-4}$	--	---	---	---	93

\* Tension test did not show a definite yield point, sample failed at a stress of 0.54 kilobars.

The result of the tension test is shown in Figure 2. The test indicates a Young's modulus of 82 kilobars and a Poisson's ratio of 0.33. The sample failed brittlely at 0.53 kilobars axial stress. The strain rate for this testing was  $10^{-4}$  in/in/sec.

Four unconfined compression tests were performed over the range of strain rates;  $10^{-4}$ ,  $10^{-2}$ ,  $10^{-1}$  and 2 in/in/sec. Figure 3 delineates the stress-strain curves for the four tests. Young's modulus remained constant at  $65 \pm 1$  kb with the increasing strain rate.

The data from Figure 3 clearly indicates viscoplastic behavior. Defining the yield point as the intersection of the average linear elastic line with the line representing the strain hardening, the yield stress increases initially as a linear function of the log strain rate. This function becomes non-linear at the higher strain rates with the yield stress increasing. The yield stress versus the log strain rate is plotted in Figure 4.

Figure 5 shows a cycled unconfined compression test illustrating the elastic-plastic behavior and hysteresis. This test is not included in Table II.

The results of the hydrostatic compression are shown in Figure 6. The bulk modulus appears constant at about 84 kilobars up to a confining pressure of about 3 kilobars where it begins to increase slightly. No hysteresis occurred during the unload phase of the test.

The effect of confining pressure on the potting compound may be observed from the four triaxial compression tests shown in Figure 7. Tests were run at confining pressures of 0, 0.25, 1.0 and 4.0 kilobars at a

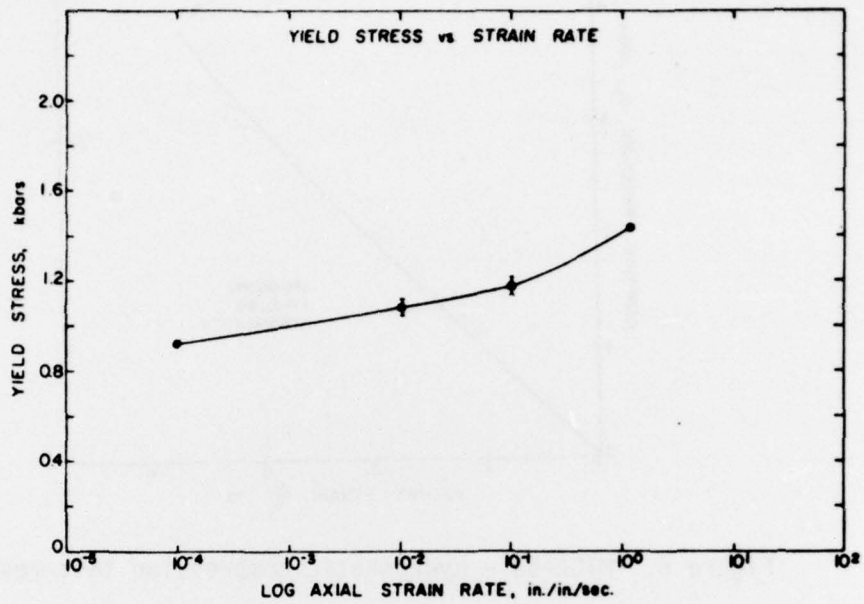


Figure 4. MICA-50 - Yield stress versus log strain rate of unconfined compression tests.

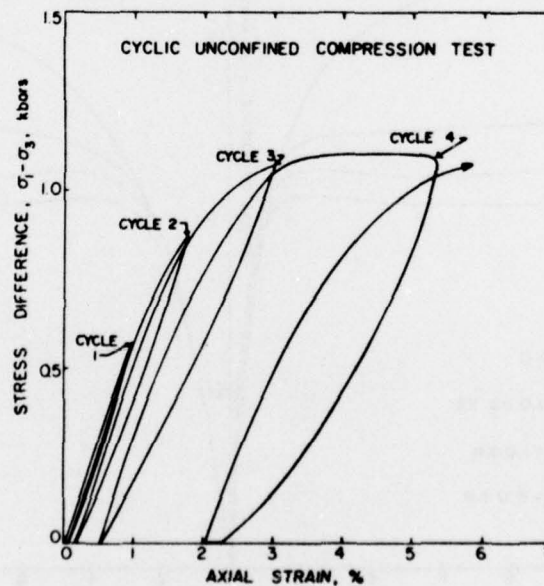


Figure 5. MICA-50 - Cycled unconfined compression test; strain rate of  $10^{-2}$  in./in./sec.

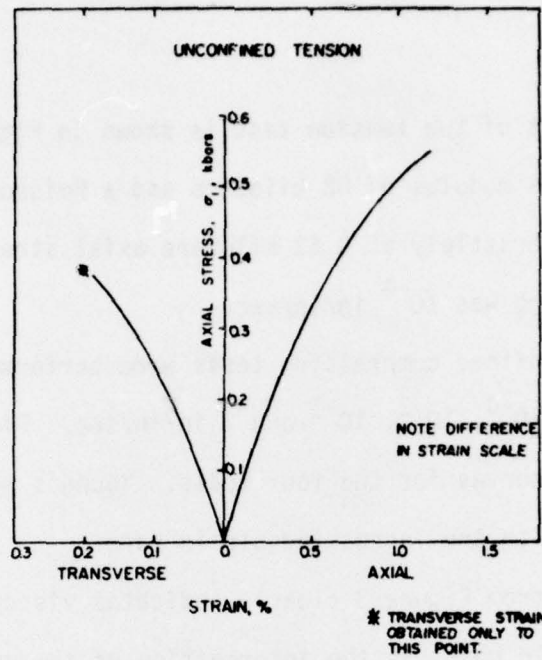


Figure 2. MICA-50 - Tension test results.

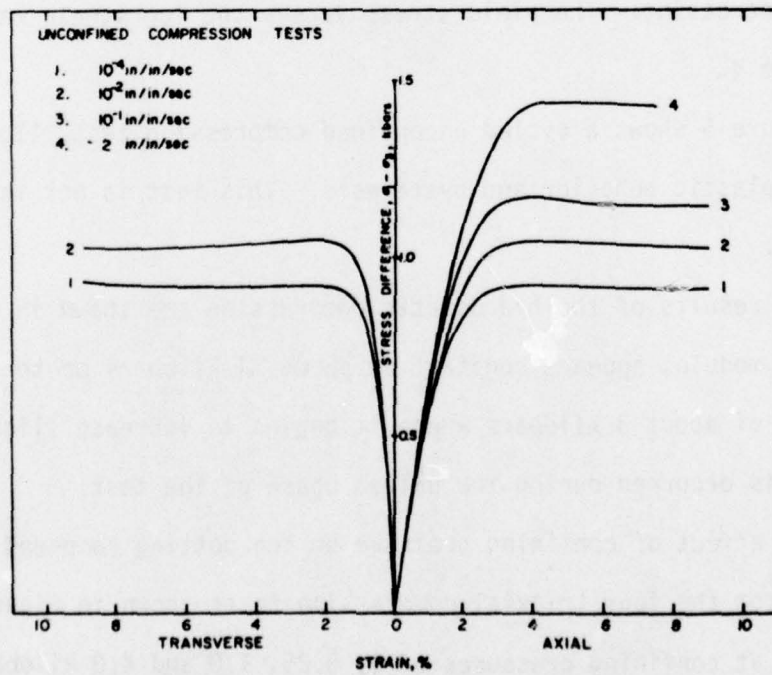


Figure 3. MICA-50 - Unconfined compression test results.

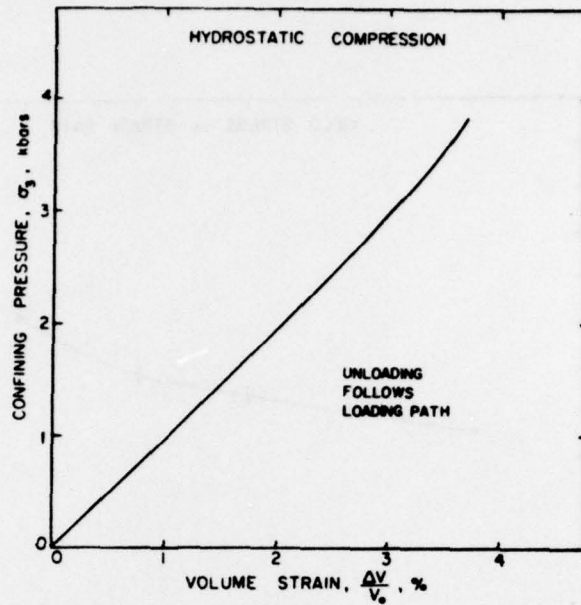


Figure 6. MICA-50 - Hydrostatic compression test results.

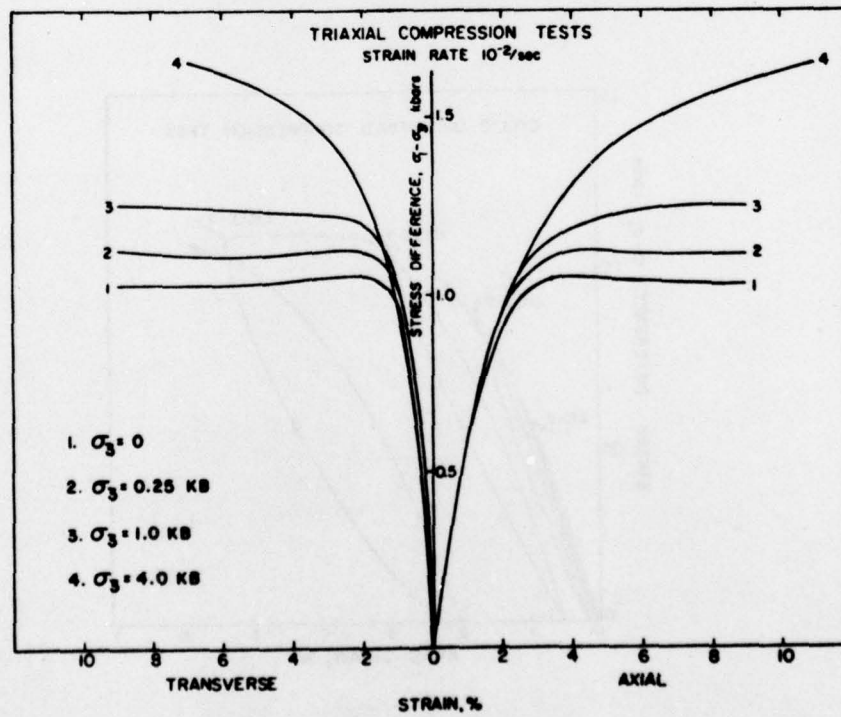


Figure 7. MICA-50 - Triaxial compression test results.

strain rate of  $10^{-2}$  in/in/sec. The results of the four tests show a Young's modulus of approximately 65 kilobars and Poisson's ratios from 0.33 to 0.37. The yield stress increased from 1.08 kilobars to 1.55 kilobars as the confining pressures increased from 0 to 4 kilobars, as shown in Figure 8. Figure 9 is a photograph showing specimens which were tested at 0.25, 1 and 4 kilobars confining pressure.

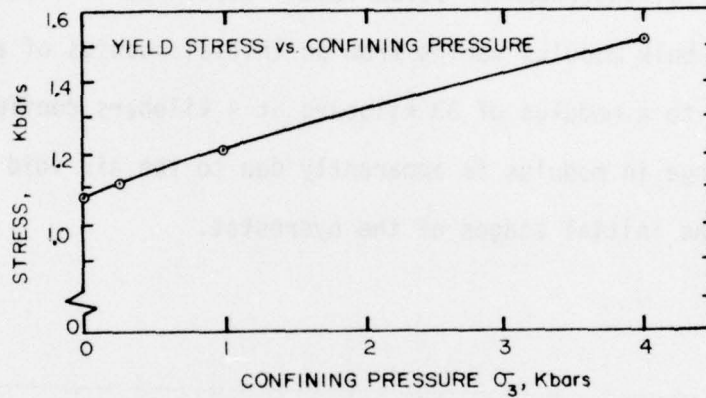


Figure 8. MICA-50 - Failure envelope.

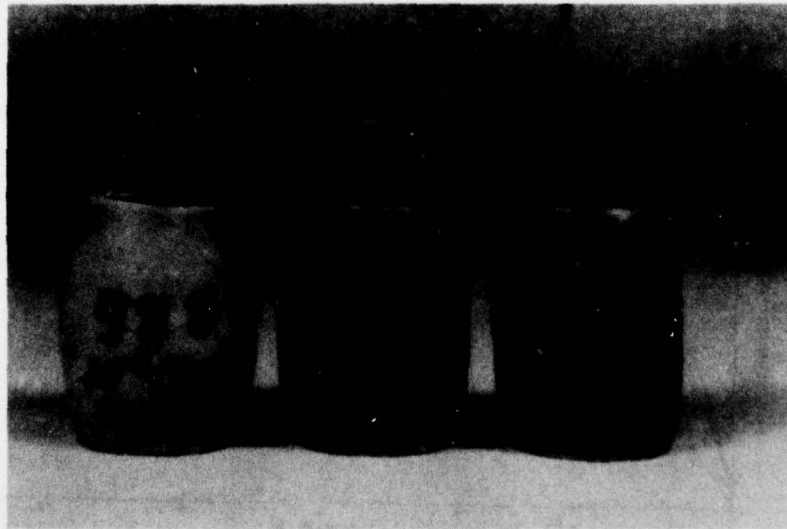


Figure 9. MICA-50 post-test triaxial compression samples; confining pressures of 0.25, 1.0 and 4.0 kilobars.

### AVCO Sand Mix Test Program

Hydrostatic compression and triaxial compression tests were conducted on the AVCO sand mix. The hydrostatic response of the sand mix to 4 kilobars confining pressure is shown in Figure 10. Sample strain is plotted versus the confining pressure ( $\sigma_3$ ). From the individual strain components shown in Figure 10, it is apparent that the material behavior is isotropic. The material undergoes an 11.5% volume strain at 4 kilobars.

The bulk modulus varies from an initial modulus of approximately 170 kilobars to a modulus of 33 kilobars at 4 kilobars confining pressure. This change in modulus is apparently due to the air void crush up occurring during the initial stages of the hydrostat.

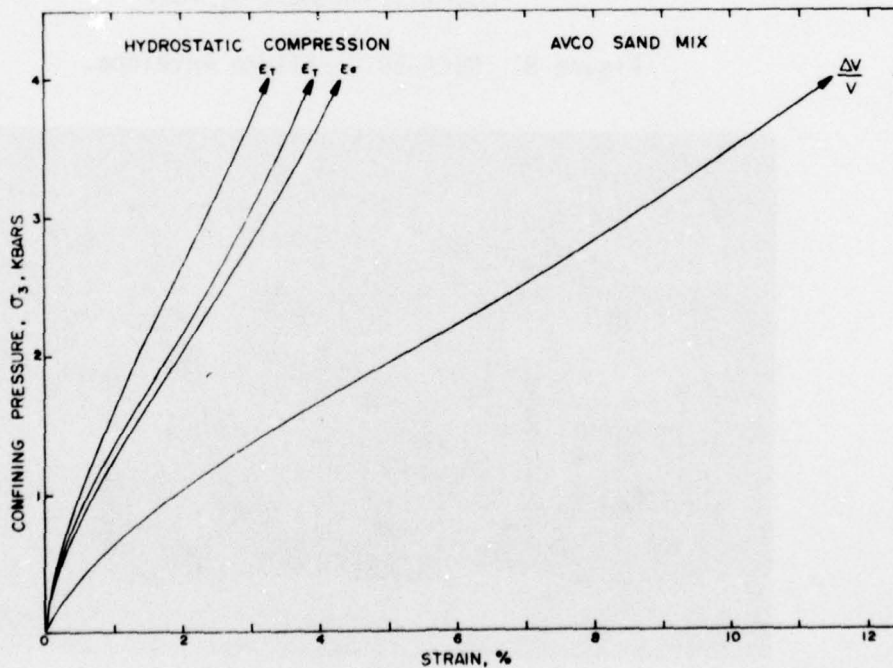


Figure 10. AVCO Sand Mix - Hydrostatic compression.

Figure 11 shows the results of the triaxial compression tests conducted. Stress difference is plotted versus the axial and transverse strains. At these confining pressures, the material behaves quite ductily. The material shows an elastic-plastic behavior and does not demonstrate a linear elastic region at either confining pressure.

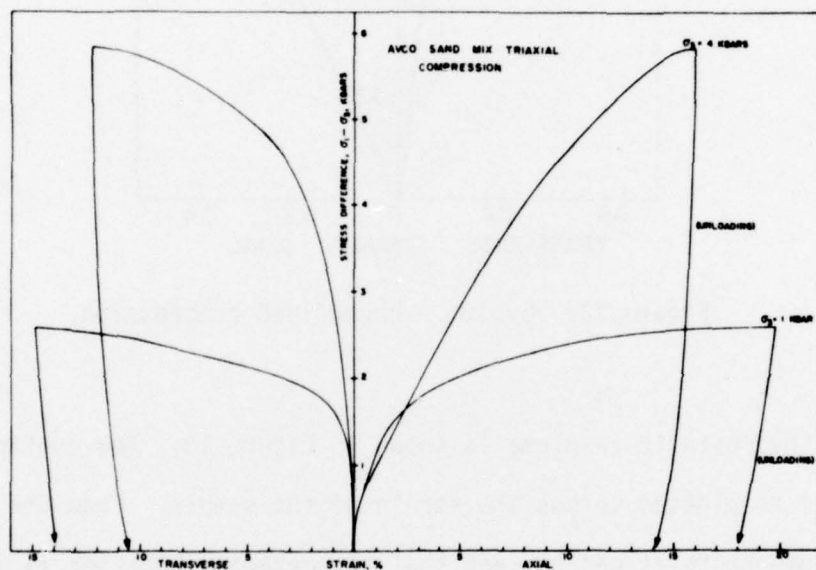


Figure 11. AVCO Sand Mix - Triaxial compression.

#### Gypsum Test Program

The test program conducted to define the mechanical response of the gypsum materials included: unconfined compression, hydrostatic compression, triaxial compression, uniaxial strain and triaxial extension.

The result of the unconfined compression test is shown in Figure 12. The material response was linear with a Young's modulus of 200 kilobars. The sample failed brittlely at 0.6 kilobars axial stress.

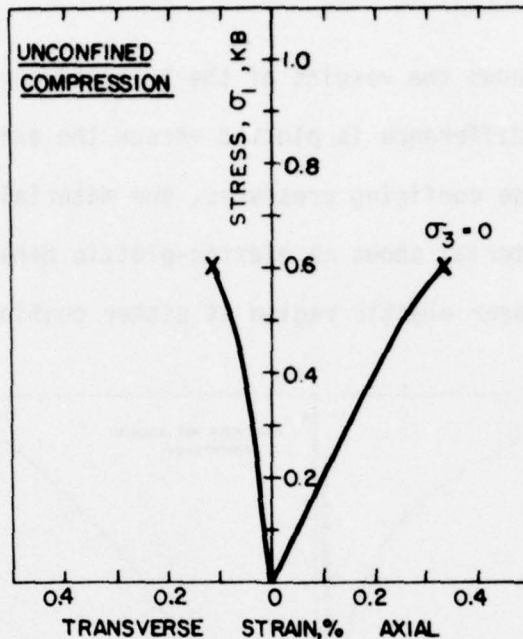


Figure 12. Gypsum - Unconfined compression.

The hydrostatic response is shown in Figure 13. The confining pressure ( $\sigma_3$ ) is plotted versus the strain of the sample. From the individual strain components it can be seen that the material behavior is isotropic. The volume change at 4 kilobars confining pressure is approximately 10%. The initial bulk modulus is approximately 108 kilobars.

The results of the triaxial compression testing are shown in Figure 14. Stress difference is plotted versus the axial and transverse strains. The 0.5 kilobar confining pressure test shows an initially linear region with a pronounced transition in slope occurring at approximately 1 kilobar stress difference. The sample was strained to approximately 19% axial strain but did not fail. The triaxial test samples tested at 2.0 kilobars and higher did not demonstrate this initial linear region. The material exhibited permanent deformation from the initial application of the shearing

stress. The test was stopped at a stress difference of 2.65 kilobars and an axial strain of 10%. All triaxial compression tests showed extensive permanent deformation. Numerous lateral cracks were present in the post-test material.

Additional triaxial tests were conducted using partially instrumented samples (special high strain axial cantilevers only) to define stress differences at failure. Maximum load criterion was used to define failure. Figure 15 summarizes the data for gypsum; these samples reached axial strain in excess of 25%.

Uniaxial strain test results are contained in Figures 16a and 16b. Mean stress is plotted versus axial deformation in Figure 16a; stress difference is plotted versus confining pressure in Figure 16b. Very little recovery is noted during the unload portion of the strain path. Each sample showed extensive lateral fracturing upon post-test examination.

Figure 17 contains the results of the extension tests conducted on the hydrostone material. The axial stress difference (which is negative in an extension test) is plotted versus the transverse and axial strains. The sample confined at 0.2 kbars failed in tension while the 0.5 kbars sample failed at a compressive axial stress state. There was an increase in strain to failure with increase in confining pressure.

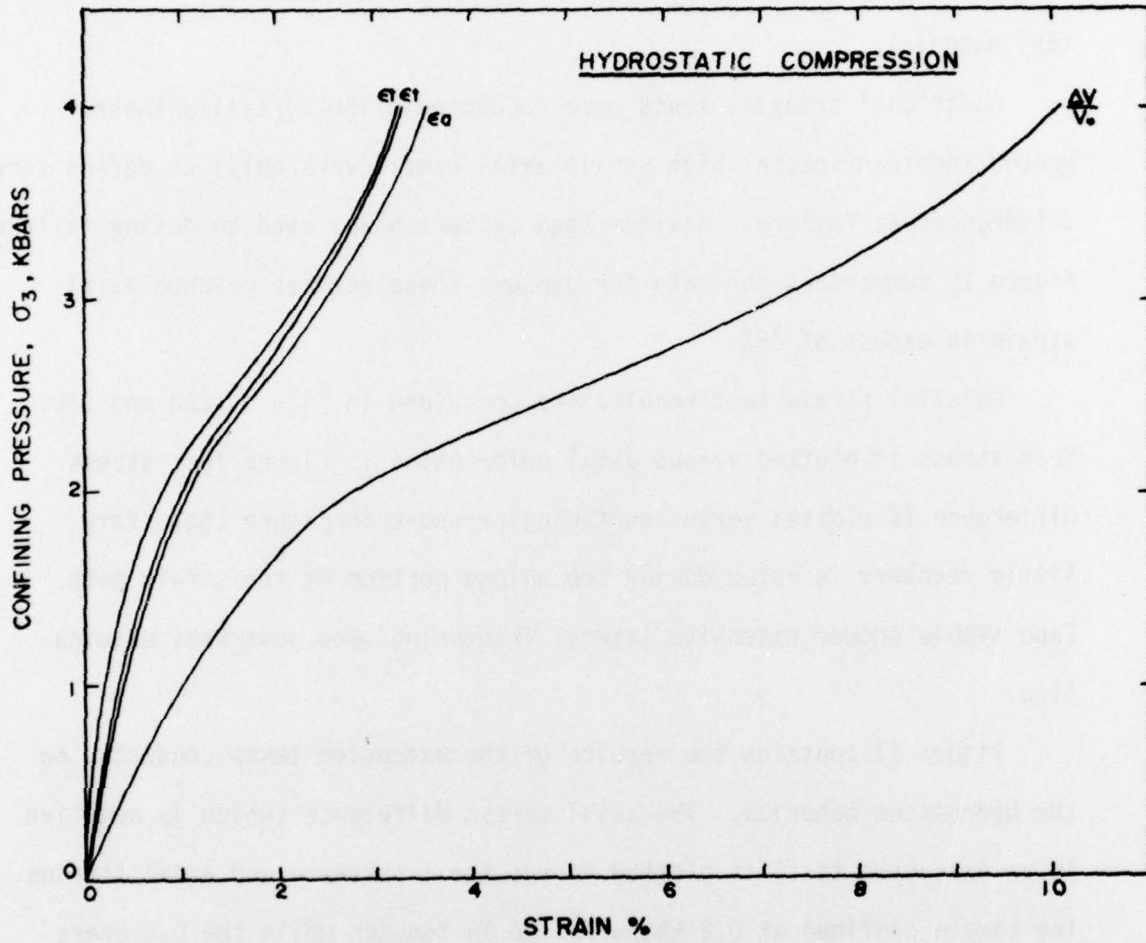


Figure 13. Gypsum - Hydrostatic response to 4 kilobars.

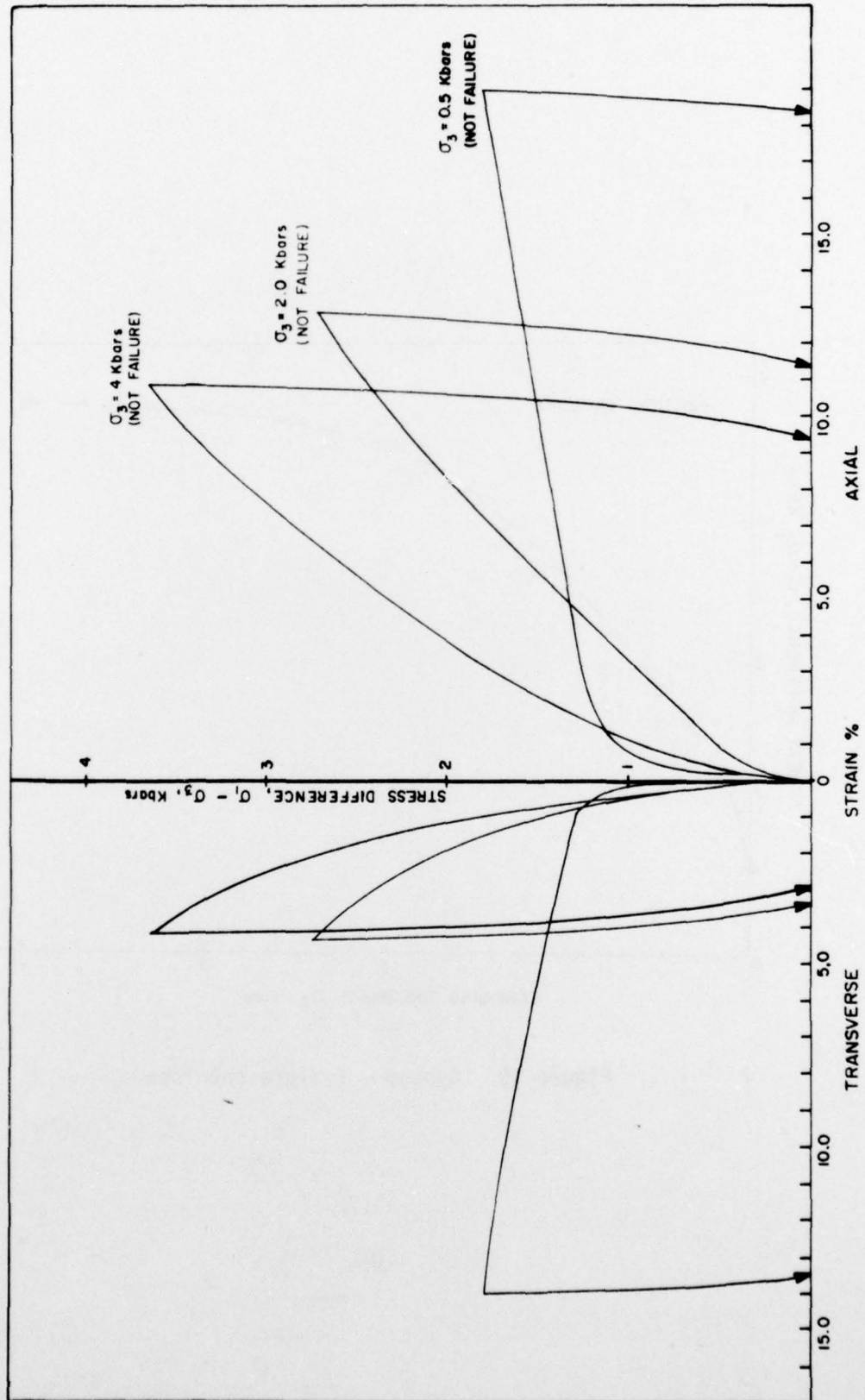


Figure 14. Gypsum - Triaxial compression.

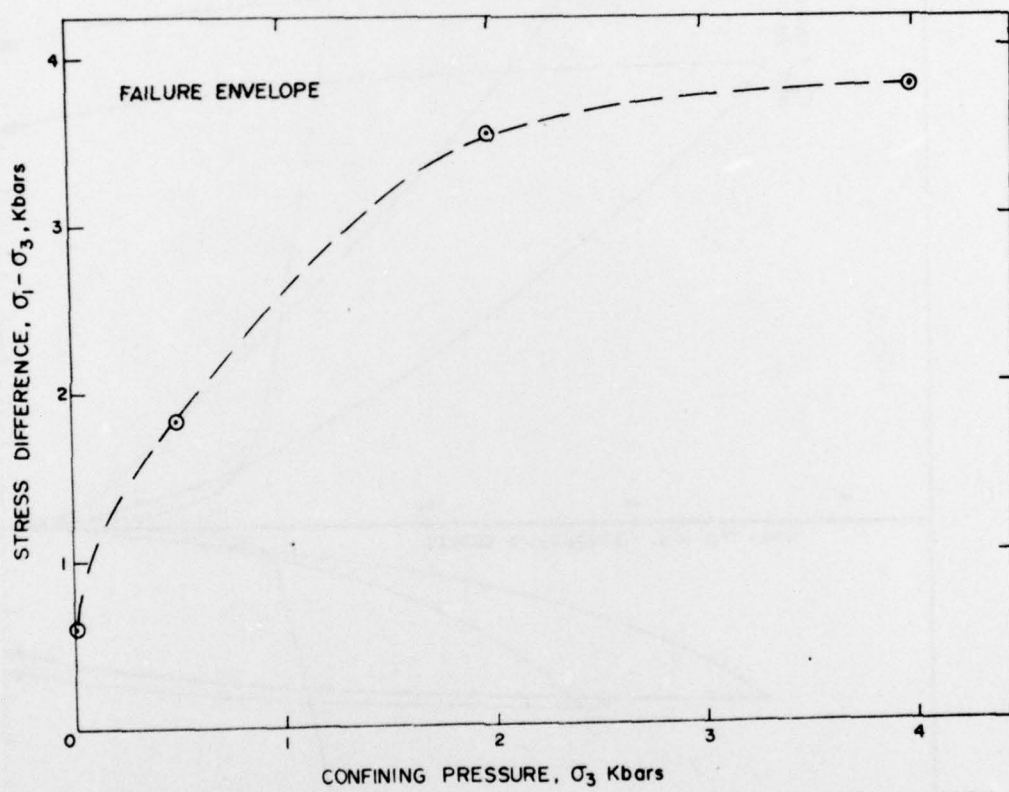


Figure 15. Gypsum - Failure envelope.

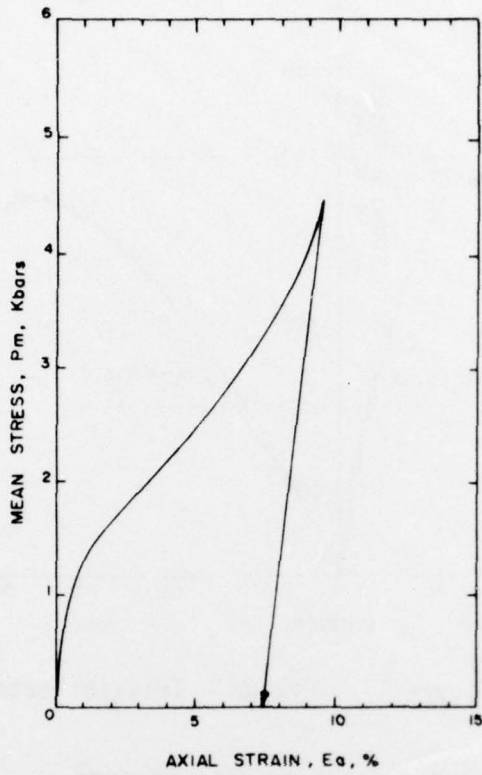


Figure 16a. Gypsum - Uniaxial strain test.

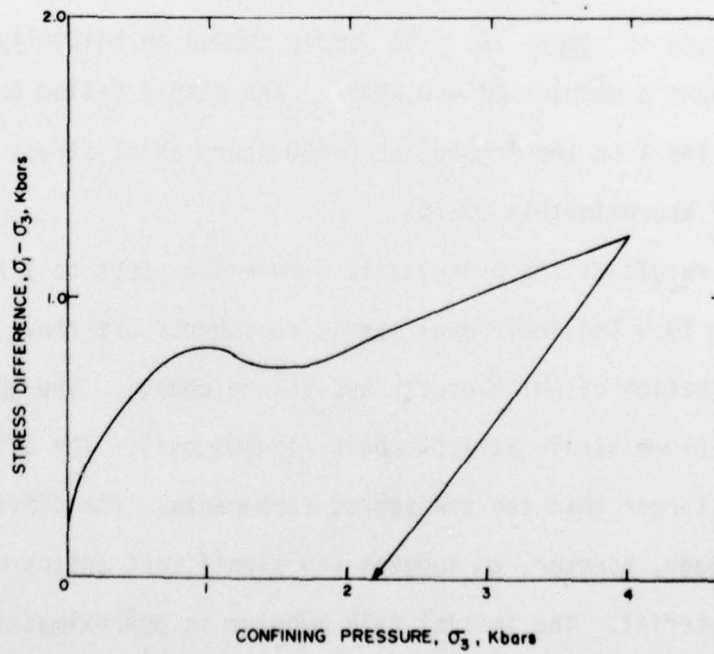


Figure 16b. Gypsum - Uniaxial strain test.

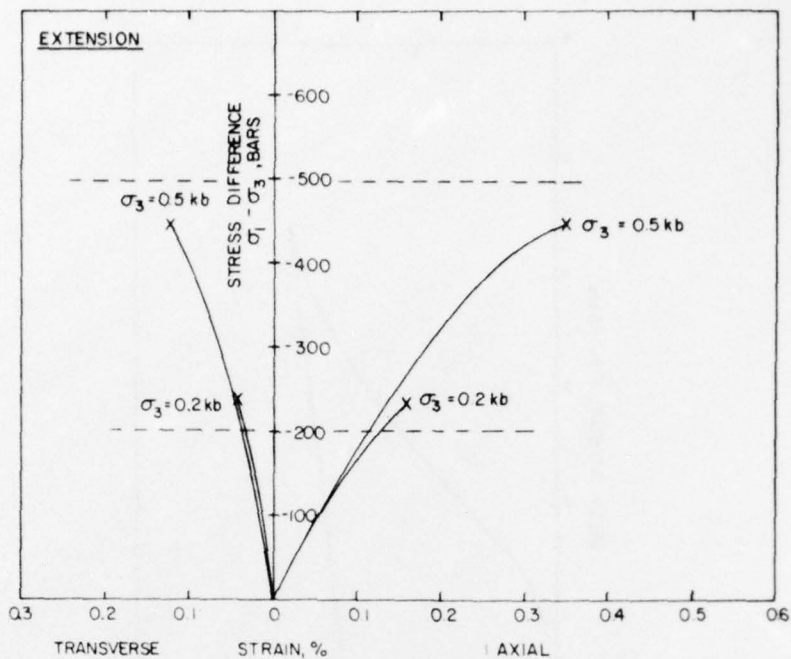


Figure 17. Gypsum - Triaxial extension.

University of New Mexico Concrete Test Program

Unconfined, hydrostatic, and triaxial compression tests were conducted on the University of Mexico concrete. The unconfined compression test results are included in Figure 18. The sample showed an initially linear response with a Young's modulus of 400 kbars. The sample failed brittly (as denoted by the X on the figure) at 0.650 kbars axial stress and at an axial strain of approximately 0.275%.

The result of the hydrostatic compression test to 1 kilobar is shown in Figure 19. The individual strain components are shown on the left, the combination of which equals the volume change. The sample demonstrates a 1.08% volume strain at 1.03 kbars (15,000 psi). The axial strain was slightly larger than the transverse components. The difference is not large enough, however, to suggest any significant anisotropic behavior of the material. The initial bulk modulus is approximately 109 kbars.

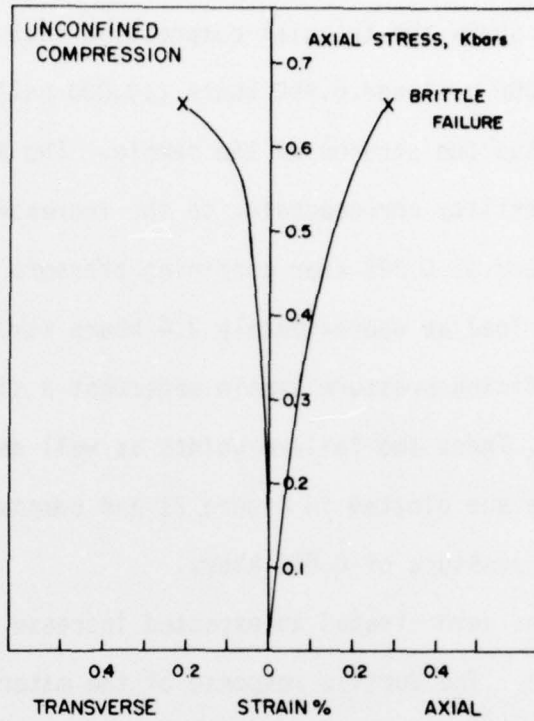


Figure 18. University of New Mexico Concrete - Unconfined compression.

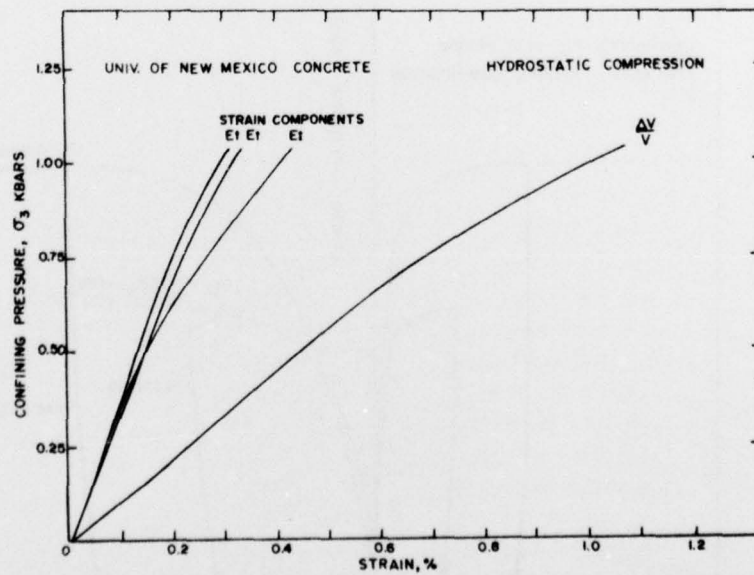


Figure 19. University of New Mexico Concrete - Hydrostatic compression.

Figure 20 shows the triaxial compressive test results conducted at 0.345 kbars (5000 psi) and 0.690 kbars (10,000 psi). The stress difference is plotted versus the strains of the sample. The samples demonstrate an increase in ductility corresponding to the increasing confining pressure. The sample tested at 0.345 kbar confining pressure began straining with no increase in load at approximately 2.4 kbars stress difference. The 0.690 kbar confining pressure sample underwent a similar ductile failure at 3.70 kbars. These two failure points as well as the failure of the unconfined sample are plotted in Figure 21 and compose a failure envelope to a confining pressure of 0.690 kbars.

The samples demonstrated an expected increase of strength with confining pressure. The ductile response of the material is best attributed to the collapse of the numerous pores produced by entrapped air. The unload portion of the triaxial compression curves shows extensive plastic deformation.

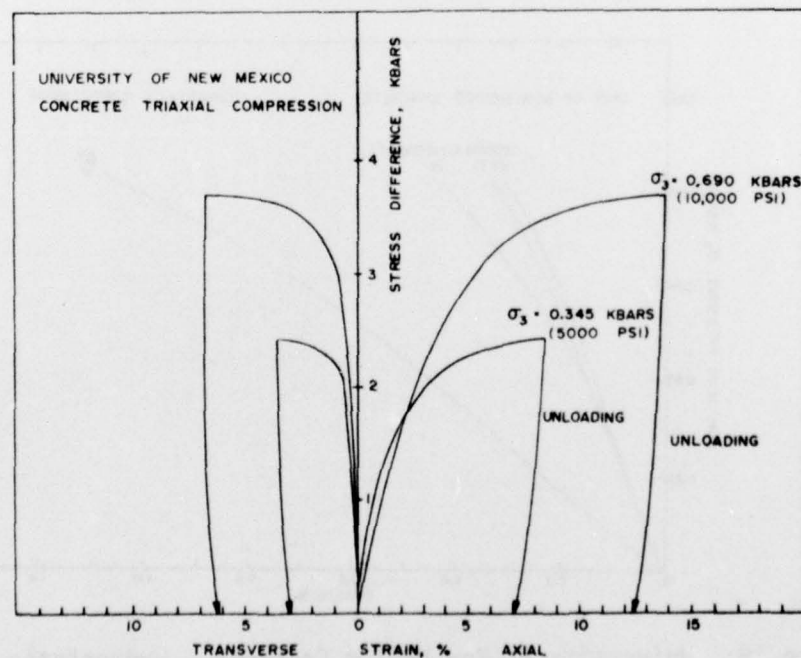


Figure 20. University of New Mexico Concrete - Triaxial compression results.

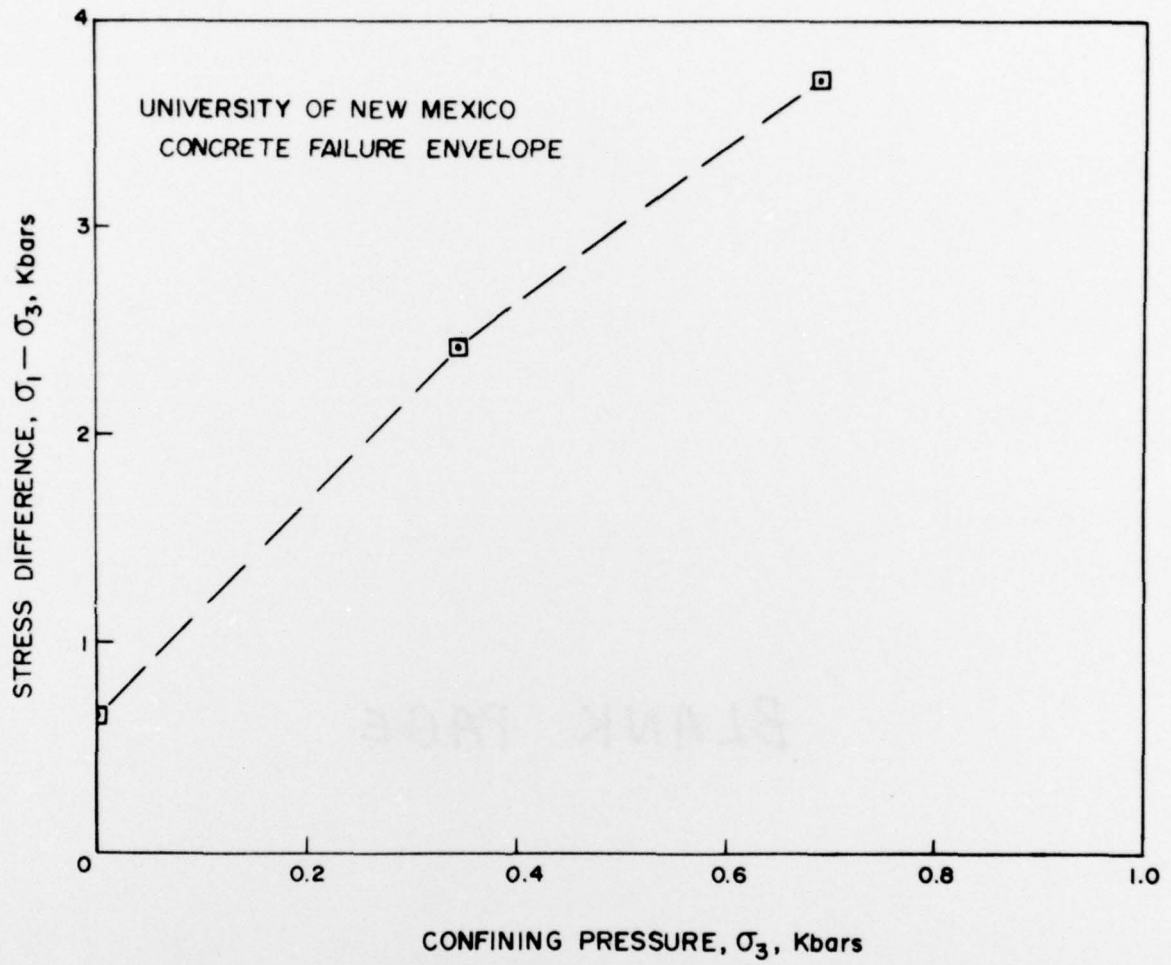


Figure 21. University of New Mexico Concrete - Failure envelope.

#### REFERENCES

1. Butters, S. W., Swolfs, H. S., Johnson, J. N., Jones, A. H., "Field Laboratory and Modeling Studies on Mount Helen Welded Tuff for Earth Penetrator Test Evaluation," Terra Tek Report TR 75-9, January 1975.
2. Nielsen, R. R., Dropek, R. K., Butters, S. W., "Some Properties of Sandstone from the Penetrator Test Site, San Ysidu, New Mexico," Terra Tek Report TR 75-60, November 1975.
3. McCoy, D., origination of potting compound material, Sandia Laboratories, Division 4763, Albuquerque, New Mexico.
4. Butler, D. K., "Mica-50 Potting Compound Test Data," 30 January 1976, Waterways Experiment Station, Vicksburg, Mississippi.

PRECEDING PAGE BLANK-NOT FILMED

## DISTRIBUTION LIST

### DEPARTMENT OF DEFENSE

Director  
Defense Advanced Research Project Agency  
ATTN: Technical Library

Director  
Defense Civil Preparedness Agency  
ATTN: Administrative Officer

Defense Documentation Center  
12 cys ATTN: TC

Director  
Defense Intelligence Agency  
ATTN: DT-2 Wpns & Sys Div  
ATTN: DB-4C Edward O. Farrell  
ATTN: DI-7E  
ATTN: Charles A. Fowler  
ATTN: Technical Library

Director  
Defense Nuclear Agency  
ATTN: TISI Archives  
2 cys ATTN: SPSS  
3 cys ATTN: TITL Technical Library  
ATTN: DDST  
ATTN: SPAS

Commander  
Field Command  
Defense Nuclear Agency  
ATTN: FCPR

Director  
Interservice Nuclear Weapons School  
ATTN: Document Control

Director  
Joint Strat Tgt Planning Staff JCS  
ATTN: Stinfo Library

Chief  
Livermore Division Field Command DNA  
ATTN: FCPRL

Under Secretary of Defense for Research  
and Engineering  
ATTN: S&SS (OS)

### DEPARTMENT OF THE ARMY

Deputy Chief of Staff or Research, Develop-  
ment and Acquisition  
ATTN: Technical Library  
ATTN: DAMA(CS) Major A. Gleim  
ATTN: DAMA-CSM-N Lt. G. Ogden

Chief of Engineers  
2 cys ATTN: DAEN-RDM  
2 cys ATTN: DAEN-MCE-D

Deputy Chief of Staff for Ops. & Plans  
ATTN: Dir. of Chem. & Nuclear Ops.  
ATTN: Technical Library

Chief  
Engineer Strategic Studies Group  
ATTN: DAEN-FES

Project Manager  
Gator Mine Program  
ATTN: E. J. Lindsey

Commander  
Harry Diamond Laboratories  
ATTN: DRXDO-NP  
ATTN: DRXDO-RBH James H. Gwaltney

Commander  
Picatinny Arsenal  
ATTN: B. Shulman DR-DAR-L-C-FA  
ATTN: P. Angelloti  
ATTN: SMUPA-AD-D-A  
ATTN: Paul Harris  
ATTN: Ernie Zimpo  
ATTN: SMUPA-AD-D-A-7  
ATTN: Technical Library  
ATTN: Ray Moesner  
ATTN: Marty Margolin  
ATTN: SMUPA-AD-D-M  
ATTN: Jerry Pental

Commander  
Redstone Scientific Information Center  
ATTN: Chief, Documents

Commander  
U.S. Army Armament Command  
ATTN: Technical Library

PRECEDING PAGE BLANK-NOT FILMED

DEPARTMENT OF THE ARMY (Continued)

Director  
U.S. Army Ballistic Research Labs  
ATTN: G. Roecker  
ATTN: DRXBR-X  
ATTN: G. Grabarek  
ATTN: J. H. Keefer DRDAR-BLE  
ATTN: A. Ricchiazzi  
ATTN: J. W. Apgar  
ATTN: DRXBR-TB  
2 cys ATTN: Technical Library Edward Baicy

Commander and Director  
U.S. Army Cold Region Res. Engineer Lab  
ATTN: G. Swinzow

Commander  
U.S. Army Comb. Arms Combat Dev. Acty.  
ATTN: Ltc. Pullen  
ATTN: Ltc. G. Steger

Commander  
U.S. Army Engineer Center  
ATTN: ATSEN-SY-L

Division Engineer  
U.S. Army Engineer Division Huntsville  
ATTN: HNDED-SR

Division Engineer  
U.S. Army Engineer Division Missouri River  
ATTN: Technical Library

Commandant  
U.S. Army Engineer School  
ATTN: ATSE-TEA-AD  
ATTN: ATSE-CTD-CS

Director  
U.S. Army Engineer Waterways Experiment Sta.  
ATTN: Behzad Rohani  
ATTN: William Flathau  
ATTN: Technical Library  
ATTN: Leo Ingram  
ATTN: D. K. Butler  
ATTN: Guy Jackson  
ATTN: P. Hadala  
ATTN: John N. Strange

Commander  
U.S. Army Material & Mechanics Rsch Ctr.  
ATTN: Technical Library

DEPARTMENT OF THE ARMY (Continued)

Commander  
U.S. Army Material Dev. & Readiness Command  
ATTN: Technical Library

Director  
U.S. Army Material System Analysis Acty.  
ATTN: Joseph Sperazza

Commander  
U.S. Army Missile Command  
ATTN: J. Hogan  
ATTN: W. Jann  
ATTN: F. Fleming

Commander  
U.S. Army Mobility Equipment R&D Center  
ATTN: STSFB-MW  
ATTN: Technical Library  
ATTN: STSFB-XS

Commander  
U.S. Army Nuclear Agency  
ATTN: Technical Library  
ATTN: Document Control

Commander  
U.S. Army Training and Doctrine Command  
ATTN: Ltc. Auveduti, Col. Enger  
ATTN: Ltc. J. Foss

Commandant  
U.S. Army War College  
ATTN: Library

U.S. Army Material Command Project Manager  
for Nuclear Munitions  
ATTN: DRCPM-NUC

DEPARTMENT OF THE NAVY

Chief of Naval Operations  
ATTN: OP 982 Ltc. Dubac  
ATTN: Code 604C3 Robert Piacesi  
ATTN: OP 982 Lcdr. Smith  
ATTN: OP 982 Capt. Toole

Chief of Naval Research  
ATTN: Technical Library

DEPARTMENT OF THE NAVY (Continued)

Officer-In-Charge  
Civil Engineering Laboratory  
ATTN: R. J. Odello  
ATTN: Technical Library

Commandant of the Marine Corps  
ATTN: POM

Commanding General  
Development Center  
ATTN: Ltc. Gapenski  
ATTN: Capt. Hartneady

Commander  
Naval Air Systems Command  
ATTN: F. Marquardt

Commanding Officer  
Naval Explosive Ord. Disposal Facility  
ATTN: Code 504 Jim Petrousky

Commander  
Naval Facilities Engineering Command  
ATTN: Technical Library

Superintendent (Code 1424)  
Naval Postgraduate School  
ATTN: Code 2124 Tech. Rpts. Library

Director  
Naval Research Laboratory  
ATTN: Code 2600 Technical Library

Commander  
Naval Sea Systems Command  
ATTN: ORD-033  
ATTN: SEA-9931G

Officer-In-Charge  
Naval Surface Weapons Center  
ATTN: Code WX21 Technical Library  
ATTN: Code WA501 Navy Nuc Prgms Off  
ATTN: M. Kleinerman

Commander  
Naval Surface Weapons Center  
ATTN: Technical Library

Commander  
Naval Weapons Center  
ATTN: Carl Austin  
ATTN: Code 533 Technical Library

DEPARTMENT OF THE NAVY (Continued)

Commanding Officer  
Naval Weapons Evaluation Facility  
ATTN: Technical Library

Director  
Strategic Systems Project Office  
ATTN: MSP-43 Technical Library

DEPARTMENT OF THE AIR FORCE

Air Force Armament Laboratory, AFSC  
3 cys ATTN: John Collins AFATL/DLYV  
ATTN: Masey Valentine

Air Force Institute of Technology, AU  
ATTN: Library AFIT Bldg 640 Area B

Air Force Weapons Laboratory, AFSC  
ATTN: SUL

Headquarters  
Air Force Systems Command  
ATTN: Technical Library

Assistant Secretary of the Air Force  
Research and Development  
ATTN: Col. R. E. Steere

Deputy Chief of Staff  
Research and Development  
ATTN: Col. J. L. Gilbert

Commander  
Foreign Technology Division, AFSC  
ATTN: NICD Library

Headquarters USAF/IN  
ATTN: INATA

Headquarters USAF/RD  
ATTN: RDPM

Oklahoma State University  
Field Office for Weapons Effectiveness  
ATTN: Edward Jackett

Commander  
Rome Air Development Center, AFSC  
ATTN: EMTLD Document Library

DEPARTMENT OF THE AIR FORCE (Continued)

SAMSO/RS  
(Reentry Systems)  
ATTN: RSS

DEPARTMENT OF ENERGY

Department of Energy  
Albuquerque Operations Office  
ATTN: Doc. Con. for Tech. Library

Department of Energy  
Division of Headquarters Services  
ATTN: Doc. Con. for Class Tech. Lib.

Department of Energy  
Nevada Operations Office  
ATTN: Doc. Con. for Tech. Library

Division of Military Application  
ATTN: Doc. Control for Test Office

University of California  
Lawrence Livermore Laboratory  
ATTN: Mark Wilkins L-504  
ATTN: Jerry Goudreau  
ATTN: Technical Information Dept L-3

Los Alamos Scientific Laboratory  
ATTN: Doc. Control for Tom Dowler  
ATTN: Doc. Control for Reports Lib.

Sandia Laboratories  
Livermore Laboratory  
ATTN: Doc. Control for Tech. Lib.

Sandia Laboratories  
ATTN: Doc. Control for William Caudle  
ATTN: Doc. Control for John Keizur  
ATTN: Doc. Control for W. Patterson  
ATTN: Doc. Control for W. Altsmeirer  
ATTN: Doc. Con. for 3141 Sandia Rpt Coll  
ATTN: Doc. Control for John Colp  
ATTN: Doc. Control for Walter Herrmann

OTHER GOVERNMENT

NASA  
Ames Research Center  
ATTN: Robert W. Jackson

OTHER GOVERNMENT (Continued)

Office of Nuclear Reactor Regulation  
ATTN: Lawrence Shao  
ATTN: Robert Heineman

DEPARTMENT OF DEFENSE CONTRACTORS

Aerospace Corporation  
ATTN: Tech. Information Services

Agbabian Associates  
ATTN: M. Agbabian

Applied Theory, Inc.  
2 cys ATTN: John G. Trulio

AVCO Research & Systems Group  
ATTN: Research Lib. A830 Rm 7201  
ATTN: S. Skemp J200  
ATTN: David Henderson  
ATTN: Pat Grady

Battelle Memorial Institute  
ATTN: Technical Library

The BDM Corporation  
ATTN: Technical Library

The Boeing Company  
ATTN: Aerospace Library

California Research & Technology, Inc.  
ATTN: Ken Kreyenhagen  
ATTN: Technical Library

Civil/Nuclear Systems Corp.  
ATTN: Robert Crawford

EG&G, Inc.  
Albuquerque Division  
ATTN: Technical Library

Engineering Societies Library  
ATTN: Ann Mott

General Dynamics Corp.  
Pomona Division  
ATTN: Keith Anderson

General Electric Company  
ATTN: DASIAC

DEPARTMENT OF DEFENSE CONTRACTORS (Cont.)

Georgia Institute of Technology

ATTN: S. V. Hanagud  
ATTN: L. W. Rehfield

Honeywell Incorporated  
Defense Systems Division

ATTN: T. N. Helvig

Institute for Defense Analyses

ATTN: IDA Librarian Ruth S. Smith

Kaman Avidyne

Division of Kaman Sciences Corp.

ATTN: E. S. Criscione  
ATTN: Norman P. Hobbs  
ATTN: Technical Library

Kaman Sciences Corporation

ATTN: Library

Lockheed Missiles & Space Co., Inc.

ATTN: M. Culp  
ATTN: Technical Library

Lockheed Missiles and Space Co., Inc.

ATTN: Tech Info Ctr D/Coll

Martin Marietta Corporation

Orlando Division

ATTN: Al Cowen  
ATTN: M. Anthony  
ATTN: H. McQuaig

Merritt Cases, Incorporated

ATTN: J. L. Merritt  
ATTN: Technical Library

University of New Mexico

Dept. of Campus Security and Police

ATTN: G. E. Triandafalidis

Nathan M. Newmark

Consulting Engineering Services

ATTN: W. Hall  
ATTN: Nathan M. Newmark

Pacifica Technology

ATTN: R. Bjork  
ATTN: G. Kent

DEPARTMENT OF DEFENSE CONTRACTORS (Cont.)

Physics International Company

ATTN: Doc. Control for Dennis Orphal  
ATTN: Doc. Control for L. A. Behrmann  
ATTN: Doc. Control for Charles Godfrey  
ATTN: Doc. Control for Tech. Library

R & D Associates

ATTN: William B. Wright, Jr.  
ATTN: J. G. Lewis  
ATTN: Cyprus P. Knowles  
ATTN: Harold L. Brode  
ATTN: Technical Library  
ATTN: Arlen Fields  
ATTN: Paul Rausch  
ATTN: Henry Cooper

The Rand Corporation

ATTN: Technical Library

Science Applications, Inc.

ATTN: Technical Library

SRI International

ATTN: Jim Colton  
ATTN: George R. Abrahamson

Systems, Science and Software, Inc.

ATTN: Robert Sedgewick  
ATTN: Technical Library  
ATTN: Edward Gaffney

Terra Tek, Inc.

ATTN: Technical Library  
ATTN: D. O. Enniss  
ATTN: S. W. Butters  
ATTN: R. K. Dropek  
ATTN: A. H. Jones

TRW Defense & Space Systems Group

ATTN: Tech Info. Center S-1930  
ATTN: Peter K. Dai R1/2170

TRW Defense & Space Systems Group

San Bernardino Operations  
ATTN: E. Y. Wong 527/712

Weidlinger Assoc. Consulting Engineers

ATTN: Melvin L. Baron  
ATTN: J. M. McCormick

Weidlinger Assoc. Consulting Engineers

ATTN: J. Isenberg

