

AD-A050 204

WALTER REED ARMY INST OF RESEARCH WASHINGTON D C
THE BEHAVIORAL REPERTOIRE. AN INSTRUMENT USED TO ASSESS PERSONA--ETC(U)
FEB 78 W E DATEL

F/G 5/10

UNCLASSIFIED

NL

1 OF 1

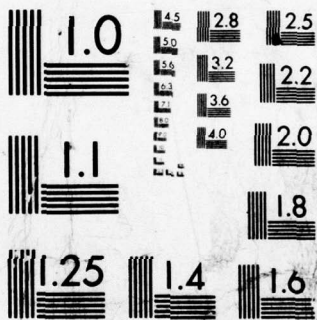
AD
A050 204



END
DATE
FILMED

3 - 78

DDC



MICROCOPY RESOLUTION TEST CHART
NATIONAL BUREAU OF STANDARDS-1963-A

AD No. _____
DDC FILE COPY

AD A 050204

①

⑥

THE BEHAVIORAL REPERTOIRE

An Instrument Used to Assess Personal and Social Behavior in the SID Project

⑩ William E. / Datel Ph.D.

⑪ 14 Feb 1978

⑫ 9p.

WR AIR

DDC
RECEIVED
FEB 21 1978
D

*See Datel, W. E., Murphy, J. G., & Pollack, P. L. Outcome in a deinstitutionalization program employing service integration methodology. Journal of Operational Psychiatry, Vol. 9 No. 1, page numbers unknown, 1978. See also Datel, W. E., & Murphy, J. G. A service-integrating model for deinstitutionalization. Administration in Mental Health, Spring issue, 35-45, 1975.

DISTRIBUTION STATEMENT A
Approved for public release;
Distribution Unlimited

368 450 Yen

This report presents

Presented here is the Behavioral Repertoire, ^{data} as it was used to assess quantitatively the personal-social behavior of clients in the Service Integration for Deinstitutionalization (SID) project. Also listed are norms (means and standard deviations) for each item in the inventory and for the summarized groupings of items. The three-fold normative sample is comprised of all those mentally ill (MI), mentally retarded (MR), and juvenile offender (JO) clients who were residing in a state institution and who had been assessed with the instrument by the time the final in-house project report was written (February 1975).

The number of item answerings was used to calculate the means and standard deviations. For individual items this number was approximately equal to the number of clients, but for summary groupings of items it exceeded greatly the number of separate individuals contributing to the sum of scores.

Behavioral Repertoire

Identifying data: Date _____
Client _____
Informant _____
Broker-advocate _____

- Rating key:
- 4 = Does frequently now
 - 3 = Would do frequently now if setting provided opportunity
 - 2 = Does occasionally now
 - 1 = Would do occasionally now if setting provided opportunity
 - 0 = Does not do at all and would not do even if setting provided opportunity

Blank = Informant cannot say

Note: When item with asterisk receives a rating above "0," all subsequent items in that section receive the same, or higher, rating.

ACCESSION for	
RTIS	Write Section <input checked="" type="checkbox"/>
DDC	Buff Section <input type="checkbox"/>
UNANNOUNCED	<input type="checkbox"/>
JUSTIFICATION	
Per DDC Form 50	
BY on file	
DISTRIBUTION/AVAILABILITY CODES	
Dist.	AVAIL. and/or SPECIAL
A	

DISTRIBUTION STATEMENT A
Approved for public release;
Distribution Unlimited

B

Item	MI (N=249)		MR (N=207)		JO (N=42)	
	M	SD	M	SD	M	SD
A. Adaptive behavior	2.2	1.8	1.8	1.9	3.0	1.5
1. Mobility/locomotion	2.8	1.7	2.6	1.8	3.3	1.3
a. Drives car	.5	1.0	.0	.2	.8	1.3
b. Travels to other cities unaccompanied	1.0	1.4	.7	1.3	1.6	1.2
c. Rides public transportation unattended	1.3	1.6	.6	1.2	2.3	1.1
*d. Leaves grounds/yard unattended and with permission	1.2	1.6	.8	1.4	2.0	1.3
e. Leaves grounds/yard attended	2.6	1.5	2.6	1.5	2.8	1.2
f. Moves freely around grounds/yard without incident	3.0	1.5	2.9	1.6	3.5	1.1
g. Moves freely about building without incident	3.5	1.2	3.3	1.4	3.4	1.1
h. Moves freely about room	3.6	1.1	3.5	1.2	3.9	.4
i. Runs	2.2	1.9	2.5	1.9	3.5	1.1
j. Walks up and down stairs	3.2	1.5	3.1	1.6	3.8	.6
k. Walks unaided	3.5	1.3	3.3	1.5	4.0	.2
l. Ambulates with assistance	3.7	1.1	3.5	1.3	4.0	.2
m. Avoids obstacles/hazards	3.7	1.0	3.4	1.4	3.9	.5
n. Stands along	3.7	1.1	3.4	1.5	3.9	.3
o. Sits unsupported	3.9	.6	3.8	.8	4.0	.2
p. Reaches for nearby objects	3.9	.5	3.8	.9	4.0	.2
q. Balances head	4.0	.4	3.9	.7	4.0	.2
2. Eating	3.3	1.4	2.9	1.7	3.6	1.0
a. Cooks for others	.7	1.2	.2	.7	1.4	1.3
b. Cooks own food	.8	1.2	.3	.8	1.5	1.2
c. Feeds self completely	3.9	.5	3.5	1.2	4.0	.0
d. Uses table knife for cutting	3.3	1.4	2.6	1.8	3.9	.5
e. Uses table knife for spreading	3.4	1.3	2.6	1.7	3.9	.5
f. Gets drink of water unassisted	3.8	.8	3.5	1.3	4.0	.0
g. Eats with fork	3.7	.8	3.0	1.6	4.0	.3
h. Uses spoon	3.9	.5	3.5	1.2	4.0	.0
i. Drinks from cup or glass unassisted	3.9	.5	3.7	1.0	4.0	.0
j. Discriminates edible substances	3.8	.8	3.5	1.2	4.0	.0
k. Chews food	3.9	.5	3.7	1.0	4.0	.0
l. Eats without drooling	3.8	.7	3.6	1.0	4.0	.0
m. Drinks from cup or glass assisted (Note: Rate at least at level of Item A21)	3.9	.5	3.9	.6	4.0	.0

	MI		MR		JO	
	M	SD	M	SD	M	SD
3. Dressing/grooming	2.9	1.6	2.6	1.8	3.6	1.1
a. Sews for self/others	.6	1.2	.3	.9	1.7	1.4
b. Helps others in dressing/grooming	1.0	1.4	1.3	1.6	1.4	1.4
c. Selects own wardrobe	2.5	1.8	2.0	1.8	3.4	.8
d. Neat/clean in appearance	2.6	1.6	2.8	1.6	3.3	1.1
*e. Exercises complete and satisfactory care of all dressing/grooming	2.6	1.7	2.5	1.8	3.5	1.0
f. Bathes or showers unattended	2.7	1.8	2.5	1.9	3.8	.7
g. Shaves (Rate female clients re armpits, legs)	2.4	1.9	1.8	2.0	3.0	1.7
h. Washes hair	2.5	1.8	2.4	1.8	3.9	.4
i. Combs/brushes hair	3.0	1.5	2.7	1.8	3.9	.4
j. Brushes teeth	2.8	1.6	2.8	1.7	3.9	.4
k. Washes face	3.3	1.2	2.9	1.7	4.0	.3
l. Dries hands	3.4	1.2	3.0	1.6	4.0	.3
m. Washes hands	3.4	1.1	3.0	1.6	3.9	.5
n. Ties shoes	3.2	1.5	2.6	1.9	3.8	.7
o. Removes own clothes when appropriate	3.4	1.3	3.2	1.5	4.0	.0
p. Uses bathroom to urinate	3.6	1.0	3.4	1.4	4.0	.0
q. Uses bathroom to defecate	3.7	.9	3.4	1.4	4.0	.0
r. Manages elimination functions without having to use bedpan	3.6	1.2	3.3	1.5	4.0	.0
s. Manages elimination functions without diapers	3.6	1.1	3.3	1.5	4.0	.0
4. Communication skills: writing	2.0	1.8	.9	1.6	3.1	1.5
a. Writes articles, papers, or books	.0	.4	.0	.3	.4	.8
b. Writes poetry, stories	.1	.6	.0	.0	.7	1.1
*c. Writes and mails letters	1.7	1.7	.4	1.2	3.1	1.0
d. Writes short letters with assistance	2.0	1.8	.6	1.3	3.4	1.1
e. Writes or prints sentences	2.4	1.8	.6	1.3	3.7	.6
f. Writes or prints words	2.6	1.7	.9	1.5	3.7	.7
g. Prints letters of alphabet	2.7	1.6	1.2	1.7	3.8	.5
h. Draws geometric designs	2.5	1.7	1.3	1.7	3.8	.5
i. Colors within lines	2.7	1.6	1.6	1.8	3.8	.7
j. Makes lines or marks with pencil/crayon	2.9	1.5	2.3	1.8	3.8	.7
5. Communication skills: reading	2.2	1.8	.8	1.5	3.1	1.2
a. Reads technical books, articles	.6	1.2	.1	.4	1.3	1.4
b. Reads novels, magazines	1.2	1.6	.3	.9	2.3	1.3
*c. Reads newspaper	1.6	1.7	.3	1.0	2.1	1.2
d. Reads children's books	1.9	1.8	.6	1.2	2.7	1.2
e. Reads simple stories or messages	2.4	1.7	.7	1.4	3.5	.8
f. Reads sentences	2.6	1.7	.8	1.5	3.7	.7
g. Reads single words	2.7	1.6	.9	1.5	3.7	.7
h. Reads letters of alphabet	2.8	1.6	1.1	1.7	3.8	.6
i. Reads numerals	2.9	1.6	1.2	1.7	3.8	.6
j. Names colors	3.0	1.5	1.8	1.9	3.8	.6

	MI		MR		JO	
	M	SD	M	SD	M	SD
6. <u>Communication skills: talking</u>	2.7	1.7	2.0	1.9	3.4	1.2
a. Gives public speeches or acts in public drama productions	.1	.5	.1	.4	.9	1.2
*b. Carries on conversation	3.1	1.4	2.1	1.8	3.8	.7
c. Speaks with fluency	3.0	1.5	2.1	1.8	3.7	.7
d. Talks on telephone	2.7	1.7	1.7	1.8	3.6	.8
e. Uses "telegraphic" speech	2.9	1.7	2.1	1.9	3.8	.9
f. Speaks in single words	3.5	1.2	2.9	1.7	3.8	.8
g. Emits recognizable speech	3.6	.9	3.0	1.6	3.9	.4
7. <u>Communication skills: aural</u>	2.9	1.6	2.2	1.8	3.5	1.0
a. Follows and comprehends lectures and formal talks	1.3	1.6	.6	1.2	2.6	1.5
*b. Follows and comprehends conversation	3.3	1.2	2.5	1.7	3.7	.7
c. Receives telephone messages	2.8	1.7	1.7	1.8	3.7	.9
d. Follows directions spoken by others	3.4	1.1	3.0	1.5	3.7	.7
e. Follows simple spoken commands	3.5	1.0	3.3	1.3	3.9	.4
8. <u>Socialization</u>	2.0	1.8	2.1	1.8	3.0	1.3
*a. Actively participates in committees or social/civic group activities	.6	1.2	.4	1.0	2.2	1.5
b. Assumes responsibilities for others	1.1	1.5	1.0	1.6	2.1	1.5
c. Ministers to the immediate needs of others	1.2	1.6	1.3	1.6	2.3	1.3
d. Engages in goal-directed group activity	1.8	1.6	1.9	1.7	2.9	1.3
e. Socializes in small groups	2.2	1.6	2.4	1.7	3.6	.9
f. Sustains friendships	2.3	1.7	2.6	1.7	3.4	1.0
g. Seeks out other individuals for companionship	2.1	1.7	2.4	1.7	3.4	1.1
h. Asks for help when needed	3.1	1.4	2.9	1.6	3.0	1.2
i. Aware of others' presence	3.8	.7	3.8	.8	3.8	.5
9. <u>Management of money</u>	2.0	1.8	1.0	1.6	2.4	1.5
*a. Manages own financial affairs completely	.9	1.4	.2	.8	1.7	1.4
b. Uses own credit cards	.7	1.4	.1	.5	1.0	1.3
c. Writes checks appropriately	.9	1.5	.1	.6	.8	1.1
d. Handles cash, makes more than simple purchases	1.9	1.8	.8	1.5	2.4	1.4
e. Makes change	2.6	1.7	1.0	1.6	3.0	1.2
f. Makes simple purchases	2.8	1.6	1.7	1.8	3.2	1.1
g. Operates coin-operated dispensers	2.9	1.6	1.8	1.9	3.1	1.1
h. Discriminates between coin pieces	3.3	1.4	1.8	1.9	3.7	.7

	<u>MI</u>		<u>MR</u>		<u>JO</u>	
	M	SD	M	SD	M	SD
10. <u>Intellective/cognitive</u>	2.4	1.6	2.1	1.7	3.2	1.1
a. Displays sound common sense	2.2	1.5	2.0	1.6	3.1	1.1
b. Exercises good social judgment	2.0	1.6	1.7	1.7	2.6	1.2
c. Displays usable fund of general information	2.1	1.6	1.6	1.6	3.0	1.2
d. Applies what is learned from one situation to another	2.1	1.6	1.8	1.6	2.9	1.1
e. Expresses ideas clearly	2.3	1.6	1.9	1.7	2.9	1.2
f. Learns new tasks readily	2.1	1.6	1.8	1.6	3.1	1.1
g. Uses numerical concepts	2.2	1.7	.9	1.4	3.0	1.2
h. Appreciates humorous happenings	2.6	1.5	2.6	1.6	3.6	.8
i. Responds to TV stimuli	2.7	1.6	2.9	1.6	3.8	.6
j. Responds to music	2.7	1.5	3.1	1.5	3.7	.7
k. Appreciates common dangers/hazards	3.3	1.3	2.8	1.7	3.6	.8
11. <u>Affect</u>	2.9	1.5	3.0	1.6	3.3	1.0
a. Expresses joy on happy occasions	3.0	1.4	3.1	1.4	3.6	.9
b. Expresses sadness on sad occasions	2.9	1.5	2.8	1.7	3.5	.9
c. Expresses anger when blocked or frustrated	2.9	1.5	3.1	1.5	3.4	1.1
d. Expresses love/affection to others	2.7	1.6	2.9	1.6	2.9	1.2
12. <u>Work</u>	1.0	1.6	.8	1.5	1.9	1.7
*a. Performs clerical/professional services	.1	.5	.0	.1	.3	.7
*b. Performs skilled services	.2	.9	.1	.4	.7	1.2
*c. Performs semi-skilled services	.6	1.3	.4	1.1	1.8	1.6
*d. Performs unskilled labor	1.7	1.7	1.5	1.8	3.2	1.2
e. Performs routine chores	2.5	1.7	2.2	1.8	3.5	.9
13. <u>Housekeeping skills</u>	1.5	1.7	1.2	1.6	2.6	1.5
a. Cooks	.9	1.3	.4	.8	1.6	1.4
b. Washes clothes	1.4	1.6	1.0	1.5	2.6	1.2
c. Cleans house (vacuums, sweeps, mops, dusts, etc.)	1.5	1.6	1.2	1.5	3.1	1.2
d. Performs household maintenance tasks (paints, minor plumbing repairs, minor carpentry, etc.)	.7	1.2	.4	1.0	1.8	1.7
e. Gardens	.8	1.2	.4	1.1	1.1	1.3
f. Mows lawn	.7	1.2	.4	1.0	1.7	1.4
g. Makes own bed	2.7	1.7	2.2	1.9	3.9	.5
h. Does simple household maintenance tasks (replaces light bulbs, cleans fireplace, etc.)	1.6	1.6	1.3	1.7	2.8	1.3
i. Picks up immediate living area	2.5	1.7	2.3	1.8	3.4	1.0
j. Empties wastebasket	2.4	1.7	2.3	1.8	3.4	1.1

	MI		MR		JO	
	M	SD	M	SD	M	SD
14. <u>Pastimes</u>	.6	1.3	.7	1.4	1.9	1.6
a. Plays musical instrument	.2	.8	.2	.8	.6	1.2
b. Sings	.8	1.3	1.1	1.5	1.8	1.6
c. Dances	.9	1.4	1.3	1.6	2.5	1.4
d. Paints, draws	.5	1.2	.6	1.2	1.8	1.4
e. Sculpts	.1	.5	.1	.4	.6	.9
f. Performs crafts	.7	1.3	.4	1.0	.9	1.5
g. Engages in sports	.5	1.1	.6	1.3	3.3	1.1
h. Watches sports	1.1	1.5	1.1	1.5	3.6	.8
i. Rides horses	.1	.4	.1	.4	.6	1.1
j. Hunts or fishes	.2	.7	.2	.6	1.5	1.5
k. Rides bicycle	.3	.8	.4	1.1	1.9	1.5
l. Plays cards	.8	1.4	.5	1.1	3.3	1.1
m. Acts in plays	.1	.4	.2	.7	1.1	1.4
n. Plays chess/checkers	.6	1.2	.2	.8	2.3	1.6
o. Reads	1.4	1.6	.6	1.2	2.6	1.0
p. Plays table games	.9	1.4	.8	1.4	3.1	1.1
q. Sews/knits	.6	1.2	.2	.8	1.3	1.5
r. Watches TV	2.5	1.5	2.8	1.6	3.9	.4
s. Converses	2.5	1.6	2.3	1.8	3.7	.8
t. Works crossword puzzles	.3	1.0	.1	.6	1.6	1.4
u. Colors	.5	1.1	1.1	1.6	1.8	1.3
v. Plays with toys	.2	.7	1.3	1.7	1.4	1.5
w. Swings	.2	.7	.9	1.6	1.0	1.3
x. Skips rope or plays hopscotch	.1	.6	.3	.9	.7	1.3
y. Plays hide and seek	.1	.6	.3	1.0	.7	1.4
z. Plays peek-a-boo	.1	.6	.3	1.0	.5	1.2

	MI		MR		JO	
	M	SD	M	SD	M	SD
B. <u>Maladaptive behavior</u> (Same scale as above)	.4	1.1	.4	1.1	.5	1.0
1. <u>Faulty socialization</u>	.5	1.1	.5	1.1	.8	1.2
a. Appears sloppy or dirty	1.2	1.5	1.1	1.4	.7	1.1
b. Neglects person	1.3	1.6	1.5	1.7	.6	1.0
c. Neglects responsibilities	1.3	1.6	1.5	1.7	1.3	1.3
d. "Picks on"/"bullies" the less fortunate	.5	1.1	.7	1.3	1.3	1.5
e. Offends with body odor	.8	1.3	.6	1.2	.2	.7
f. Argues with others	.9	1.2	.9	1.3	2.0	1.2
g. Yells and screams	.5	1.1	.8	1.2	1.0	1.4
h. Talks excessively	.6	1.2	.6	1.2	1.3	1.6
i. Cries excessively	.2	.6	.2	.7	.4	.9
j. Mumbles	.7	1.2	.8	1.3	1.1	1.5
k. Laughs inappropriately	.6	1.2	.6	1.2	.9	1.2
l. Answers inappropriately	.6	1.0	.6	1.2	1.0	1.2
m. Disobeys directions from others	.7	1.2	.8	1.2	1.5	1.2
n. Gives orders to others inappropriately	.4	1.0	.4	1.0	.9	1.2
o. Paces floor	.8	1.4	.6	1.3	.4	.9
p. Wrings hands	.2	.8	.2	.8	.1	.5
q. Avoids people	.7	1.3	.6	1.2	.7	1.1
r. Sits and stares	.8	1.2	.6	1.1	.5	.9
s. Fasts	.2	.7	.1	.4	.1	.5
t. Announces worthlessness	.3	.8	.1	.4	.4	.8
u. Steals	.2	.8	.5	1.1	1.0	1.2
v. Hoards	.4	1.0	.5	1.2	.3	1.0
w. Lies	.5	1.1	.4	.9	1.5	1.3
x. Runs away	.3	.9	.1	.6	.6	1.2
y. Truancy behavior	.3	.9	.2	.7	1.0	1.3
z. Talks crudely (inappropriately) about sex	.2	.7	.1	.6	.8	1.2
aa. Masturbates in public	.0	.3	.1	.7	.0	.3
bb. Exhibits genitals inappropriately	.1	.5	.1	.6	.2	.5
cc. Practices voyerism	.0	.3	.1	.5	.2	.6
2. <u>Destructive/assaultive</u>	.2	.6	.3	.8	.5	1.0
a. Destroys property	.1	.5	.4	1.0	.5	1.0
b. Harms animals	.0	.0	.0	.2	.1	.4
c. Threatens others with physical harm	.4	.9	.3	.8	1.0	1.3
d. Assaults others (hits, bites scratches, pulls hair, etc.)	.3	.9	.5	1.1	.8	1.0
e. Attacks others sexually	.0	.1	.1	.4	.0	.3

	<u>MI</u>		<u>MR</u>		<u>JO</u>	
	M	SD	M	SD	M	SD
3. <u>Self-destructive</u>	.4	1.1	.2	.8	.7	1.3
a. Smokes	2.1	1.8	.8	1.5	2.8	1.5
b. Uses alcohol to excess	.3	.9	.1	.5	.7	1.1
c. Uses hallucinogenic or narcotic drugs	.0	.3	.0	.3	.7	1.1
d. Injures self physically (hits or bites self, pulls own hair, scratches self, pounds head, etc.)	.1	.7	.3	.9	.1	.4
e. Takes costly risks (accident prone, counter-phobic)	.1	.6	.2	.8	.2	.6
f. Threatens suicide	.1	.5	.0	.4	.1	.5
g. Attempts suicide	.0	.3	.0	.3	.0	.3
4. <u>Phobias</u>	.1	.6	.1	.5	.2	.8
a. Fears doctors	.1	.4	.1	.5	.1	.4
b. Fears death (preoccupied)	.1	.7	.0	.1	.0	.3
c. Fears darkness/night	.1	.4	.0	.4	.1	.6
d. Fears loss of sanity	.0	.2	.0	.1	.1	.4
e. Fears being alone	.1	.5	.0	.2	.2	.7
f. Fears fire (preoccupied)	.0	.2	.0	.1	.0	.3
g. Fears being harmed	.1	.5	.1	.6	.2	.7
h. Fears leaving familiar surroundings	.3	.9	.2	.6	.7	1.2
i. Fears, other	.2	.9	.2	.8	.5	1.3
5. <u>Disorientation/poor memory</u>	.9	1.5	1.0	1.6	.2	.7
a. Disoriented as to time	1.1	1.6	1.3	1.7	.3	.7
b. Disoriented as to place	.9	1.5	1.1	1.7	.1	.4
c. Disoriented as to person	.8	1.4	.9	1.6	.2	.6
d. Has poor memory for recent events	1.2	1.6	1.2	1.6	.3	1.0
e. Has poor memory for past events	1.3	1.6	1.4	1.7	.4	1.1
f. Suffers periods of amnesia	.3	1.1	.2	.9	.0	.0
6. <u>Complaints/symptoms</u>	.4	1.0	.4	1.0	.1	.6
a. Complains of fatigue	.5	1.1	.3	.8	.3	1.1
b. Complains of physical/bodily discomforts	.6	1.3	.4	.9	.3	1.0
c. Displays tics	.2	.6	.2	.7	.0	.0
d. Wets bed	.5	1.2	.8	1.4	.0	.0
e. Wets clothes during day	.4	1.0	.7	1.3	.0	.0
f. Hears or talks to voices	.6	1.2	.0	.3	.1	.4
g. Sustains obvious delusional beliefs	.5	1.2	.1	.5	.1	.7
h. Engages in "meaningless" repetitive behavior (twirling hair, head bobbing, walking in circle, hand washing, etc)	.5	1.1	.5	1.3	.2	.7
i. Exhibits excessive religious preoccupation	.1	.6	.0	.3	.1	.4
j. Soils bed (BMs)	.4	1.0	.6	1.3	.0	.0
k. Soils clothing during the day	.3	.9	.7	1.4	.0	.0
l. Other	.2	.8	.0	.4	.2	.8