

AD-A052 226

NAVAL POSTGRADUATE SCHOOL MONTEREY CALIF
REPRODUCING KERNEL FUNCTIONS OF THE SARD CORNER SPACES B CORNER--ETC(U)
MAR 78 R FRANKE
NPS53-78-001

F/6 12/1

UNCLASSIFIED

NL

1 OF 1
AD
A052226



END
DATE
FILMED
5 - 78
DDC

AD A 052226

*2
NW*

NPS53-78-001

NAVAL POSTGRADUATE SCHOOL

Monterey, California



DDC
FORM 12
MAR 30 1978
F

AD No.
DDC FILE COPY

REPRODUCING KERNEL FUNCTIONS FOR THE
SARD CORNER SPACES $B_{[p,q]}$
RICHARD FRANKE

Interim Report for Period January - March 1978

Approved for public release; distribution unlimited

Prepared for: Chief of Naval Research
Arlington, VA 22217

NAVAL POSTGRADUATE SCHOOL
Monterey, California

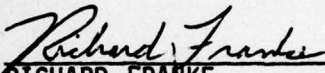
Rear Admiral Tyler F. Dedman
Superintendent

Jack R. Borsting
Provost

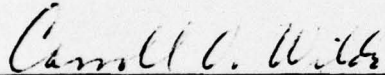
The work reported herein was supported by the Foundation Research Program of the Naval Postgraduate School with funds provided by the Chief of Naval Research.

Reproduction of all or part of this report is authorized.

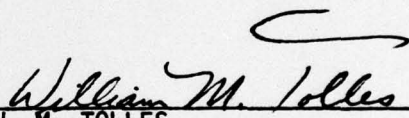
This report was prepared by:


RICHARD FRANKE
Associate Professor
Department of Mathematics

Reviewed by:


CARROLL O. WILDE, Chairman
Department of Mathematics

Released by:


W. M. TOLLES
(Acting) Dean of Research

UNCLASSIFIED

SECURITY CLASSIFICATION OF THIS PAGE (When Data Entered)

REPORT DOCUMENTATION PAGE		READ INSTRUCTIONS BEFORE COMPLETING FORM
1. REPORT NUMBER NPS53-78- <u>dd1</u>	2. GOVT ACCESSION NO. <u>Interim Rept. Jan-Mar 78</u>	3. REPORT TYPE & PERIOD COVERED Interim January - March 1978
4. TITLE (and Subtitle) Reproducing Kernel Functions for the Sard Corner Spaces B <u>(p,q)</u>	6. PERFORMING ORG. REPORT NUMBER	
7. AUTHOR(s) Richard Franke	8. CONTRACT OR GRANT NUMBER(s)	
9. PERFORMING ORGANIZATION NAME AND ADDRESS Naval Postgraduate School Monterey, CA 93940	10. PROGRAM ELEMENT, PROJECT, TASK AREA & WORK UNIT NUMBERS RR000101 61152N, RR00-01-01, N0001478WR00023	
11. CONTROLLING OFFICE NAME AND ADDRESS Chief of Naval Research Arlington, VA 22217	12. REPORT DATE Mar 78	
14. MONITORING AGENCY NAME & ADDRESS (if different from Controlling Office)	13. NUMBER OF PAGES 8	
	15. SECURITY CLASS. (if this contract) UNCLASSIFIED	
16. DISTRIBUTION STATEMENT (of this Report) Approved for public release; distribution unlimited		
17. DISTRIBUTION STATEMENT (of the abstract entered in Block 20, if different from Report)		
18. SUPPLEMENTARY NOTES		
19. KEY WORDS (Continue on reverse side if necessary and identify by block number) approximation theory, Sard corner spaces, reproducing kernel functions		
20. ABSTRACT (Continue on reverse side if necessary and identify by block number) The reproducing kernel functions for the Sard corner spaces B <u>(p,q)</u> are <u>corner \neq (p,q)</u> integrated to obtain explicit expressions. The smoothness properties of these functions are discussed.		

DDC
RECEIVED
MAR 30 1978
F

257 450

1. Introduction

Reproducing kernel functions arise naturally in approximation theory in Hilbert spaces, and are a useful theoretical tool, and can also be used for computations. Since I have used reproducing kernels in Sard corner spaces in my own work, I have felt it would be useful to have the formulas (given in terms of integrals) evaluated and written out in a more explicit form. Therefore this small report was written to discuss Sard corner spaces and to develop those formulas.

2. Sard Spaces

Sard spaces of type B are spaces of functions which have a certain type of Taylor series expansion with remainder [2]. The partial derivatives which exist, and in terms of which the expansion is given, is specified by the "complete core". For details the reference should be consulted. We follow the notation of Sard so that subscripts denote differentiation. The complete core of $B_{[p,q]}$ ("B corner p,q") is made up of the elements

$$\omega_{s,t} = \{f_{p,q}(s,t)\}$$

$$\omega_{s,b} = \{f_{p,j}(s,b) : j < q\}$$

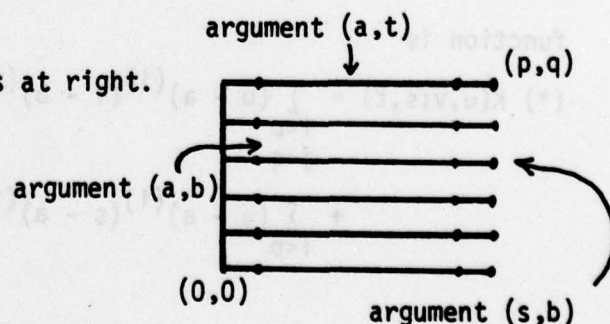
$$\omega_{a,t} = \{f_{i,q}(a,s) : i < p\}$$

$$\omega_{a,b} = \{f_{i,j}(a,b) : i < p, j < q\}$$

Here (a,b) is a fixed point.

The differentiation diagram is at right.

ACCESSION for	
NTIS	Selection <input checked="" type="checkbox"/>
DDC	Selection <input type="checkbox"/>
UNANIMOUS	<input type="checkbox"/>
JUSTICE	
BY	
DISTRIBUTION/AVAILABILITY CODES	
()	SPECIAL
A	



A function $f \in B_{[p,q]}$ can be expressed as

$$\begin{aligned}
 f(s,t) = & \sum_{\substack{i < p \\ j < q}} (s-a)^{(i)}(t-b)^{(j)} f_{i,j}(a,b) \\
 & + \sum_{i < p} (s-a)^{(i)} \int_b^t (t-\tilde{t})^{(q-1)} f_{i,q}(a,\tilde{t}) d\tilde{t} \\
 & + \sum_{j < q} (t-b)^{(j)} \int_a^s (s-\tilde{s})^{(p-1)} f_{p,j}(\tilde{s},b) d\tilde{s} \\
 & + \int_a^s \int_b^t (s-\tilde{s})^{(p-1)}(t-\tilde{t})^{(q-1)} f_{p,q}(\tilde{s},\tilde{t}) d\tilde{t} d\tilde{s}
 \end{aligned}$$

The inner product for $B_{[p,q]}$, as defined by Barnhill and Nielson [1], is

$$\begin{aligned}
 (f,g) = & \sum_{\substack{i < p \\ j < q}} f_{i,j}(a,b) g_{i,j}(a,b) \\
 & + \sum_{i < p} \int_{\beta}^{\tilde{\beta}} f_{i,q}(a,\tilde{t}) g_{i,q}(a,\tilde{t}) d\tilde{t} \\
 & + \sum_{j < q} \int_{\alpha}^{\tilde{\alpha}} f_{p,j}(\tilde{s},b) g_{p,j}(\tilde{s},b) d\tilde{s} \\
 & + \int_{\alpha}^{\tilde{\alpha}} \int_{\beta}^{\tilde{\beta}} f_{p,q}(\tilde{s},\tilde{t}) g_{p,q}(\tilde{s},\tilde{t}) d\tilde{t} d\tilde{s}
 \end{aligned}$$

Here $[\alpha, \tilde{\alpha}] \times [\beta, \tilde{\beta}]$ is the rectangle which contains the region of interest.

The above leads to the reproducing kernel function, which in turn will allow construction of the representers of functionals, particularly point evaluation functionals, in which we are interested. The reproducing kernel function is

$$\begin{aligned}
 (*) \quad K(u,v;s,t) = & \sum_{\substack{i < p \\ j < q}} (u-a)^{(i)}(v-b)^{(j)}(s-a)^{(i)}(t-b)^{(j)} \\
 & + \sum_{i < p} (u-a)^{(i)}(s-a)^{(i)} \int_b^v (v-\tilde{t})^{(q-1)}(t-\tilde{t})^{(q-1)} \psi(b,\tilde{t},t) d\tilde{t}
 \end{aligned}$$

$$\begin{aligned}
& + \sum_{j < q} (v - b)^{(j)} (t - b)^{(j)} \int_a^u (u - \tilde{s})^{(p-1)} (s - \tilde{s})^{(p-1)} \psi(a, \tilde{s}, s) d\tilde{s} \\
& + \int_a^u \int_b^v (u - \tilde{s})^{(p-1)} (s - \tilde{s})^{(p-1)} (v - \tilde{t})^{(q-1)} (t - \tilde{t})^{(q-1)} \psi(b, \tilde{t}, t) \psi(a, \tilde{s}, s) d\tilde{t} d\tilde{s}
\end{aligned}$$

In the above the function ψ is defined as

$$\psi(a, \tilde{s}, s) = \begin{cases} 1 & \text{if } a \leq \tilde{s} < s \\ -1 & \text{if } s \leq \tilde{s} < a \\ 0 & \text{otherwise} \end{cases}$$

For the above case, the kernel function can be factored into

$$K(u, v; s, t) = g_p(a; u, s) g_q(b; v, t), \text{ where}$$

$$g_p(a; u, s) = \sum_{i < p} (u - a)^{(i)} (s - a)^{(i)} + \int_a^u (u - \tilde{s})^{(p-1)} (s - \tilde{s})^{(p-1)} \psi(a, \tilde{s}, s) d\tilde{s}$$

This fact simplifies investigation of the properties of the representers of functionals considerably. It is desirable to obtain an expression for $g_p(a; u, s)$ which does not involve the integral. Repeated integration by parts, and assuming that $a \leq u, s$ yields

$$\begin{aligned}
g_p(a; u, s) &= (-1)^p (u - s)_+^{(2p-1)} \\
&+ \sum_{i < p} \{ (u - a)^{(i)} (s - a)^{(i)} + (-1)^i (s - a)^{(p-1-i)} (u - a)^{(p+i)} \}.
\end{aligned}$$

Note here that we have lost the obvious symmetry of g_p in u and s , although not the actual symmetry, of course. We can regain it however, at the expense of two formulas for g_p , depending on whether $u \leq s$ or $s < u$. To do this expand $(u - s)_+^{(2p-1)}$ (for $u > s$) in a binomial way, obtaining

$$\begin{aligned}
(-1)^p (u - s)_+^{(2p-1)} &= \frac{(-1)^p}{(2p-1)!} \sum_{k=0}^{2p-1} (2p-1)! (-1)^{2p-1-k} \frac{(u-a)^k (s-a)^{2p-1-k}}{k! (2p-1-k)!} \\
&= (-1)^p \sum_{k=0}^{2p-1} (-1)^{2p-1-k} (u-a)^{(k)} (s-a)^{(2p-1-k)}
\end{aligned}$$

$$\begin{aligned}
&= (-1)^p \sum_{k=0}^{p-1} (-1)^{2p-1-k} (u-a)^{(k)} (s-a)^{(2p-1-k)} \\
&+ (-1)^p \sum_{k=p}^{2p-1} (-1)^{2p-1-k} (u-a)^{(k)} (s-a)^{(2p-1-k)} \\
&= \sum_{i < p} (u-a)^{(p-1-i)} (s-a)^{(p+i)} (-1)^i \quad \underline{(k \leftarrow p-i-1)} \\
&\quad - \sum_{i < p} (u-a)^{(p+i)} (s-a)^{(p-1-i)} (-1)^i \quad \underline{(k \leftarrow p+i)}
\end{aligned}$$

Thus, $(-1)^p (u-s)^{(2p-1)} + \sum_{i < p} (u-a)^{(p+i)} (s-a)^{(p-1-i)} (-1)^i$

$$= \sum_{i < p} (u-a)^{(p-1-i)} (s-a)^{(p+i)} (-1)^i,$$

and we see that if we interchange u and s the expression for g_p is unchanged, and thus we can take

$$(1) \quad g_p(a; u, s) = \sum_{i < p} \{ (u-a)^{(i)} (s-a)^{(i)} + (-1)^i (u-a)^{(p+i)} (s-a)^{(p-1-i)} \}$$

when $a \leq u < s$, and

$$(2) \quad g_p(a; u, s) = g_p(a; s, u) \quad \text{when}$$

$a \leq s \leq u$. When $s < a \leq u$ we find that

$$(3) \quad g_p(a; u, s) = \sum_{i < p} (u-a)^{(i)} (s-a)^{(i)}$$

For $u < a$ it is easily observed that the only difference is that the function $\psi(a, \tilde{s}, s)$ changes sign, hence the terms from the integral appear with opposite sign, so we can say

$$(1') \quad g_p(a; u, s) = \sum_{i < p} \{ (u-a)^{(i)} (s-a)^{(i)} - (-1)^i (u-a)^{(p+i)} (s-a)^{(p-1-i)} \}$$

when $s \leq u < a$, and

$$(2') \quad g_p(a; u, s) = g_p(a; s, u) \quad \text{when } u < s < a. \quad \text{When } u \leq a \leq s \text{ we find that}$$

$$(3') \quad g_p(a; u, s) = \sum_{i < p} (u-a)^{(i)} (s-a)^{(i)}.$$

It is possible to write the reproducing kernel function in a somewhat more concise manner by defining the function

$$G_p(a;u,s) = (-1)^p (s-u)_+^{(2p-1)} + \sum_{i < p} \{ (u-a)^{(i)} (s-a)^{(i)} + (-1)^i (u-a)^{(p-1-i)} (s-a)_+^{(p+i)} \},$$

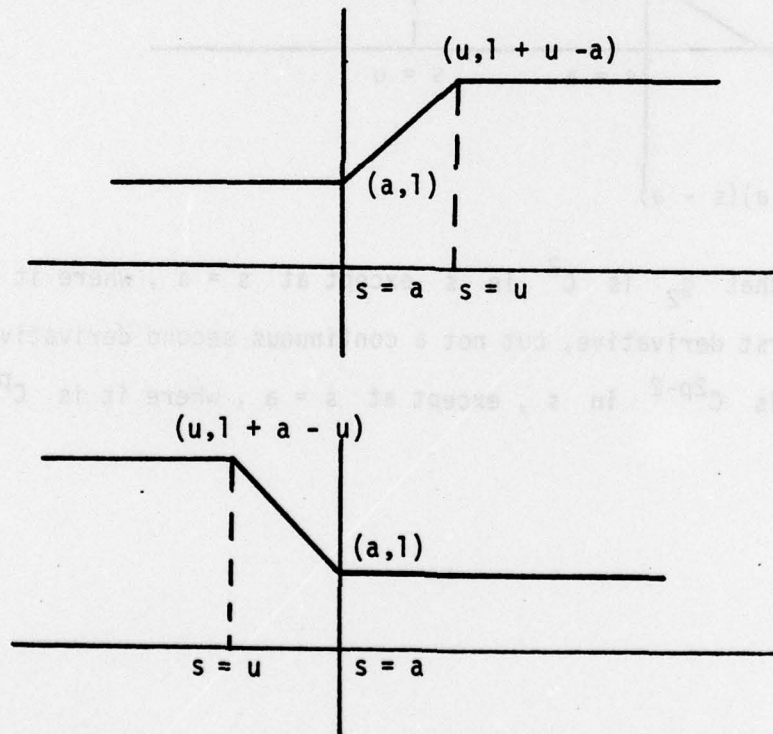
for $a \leq u$, and then observing that for cases 1, 2, and 3

$$g_p(a;u,s) = G_p(a;u,s),$$

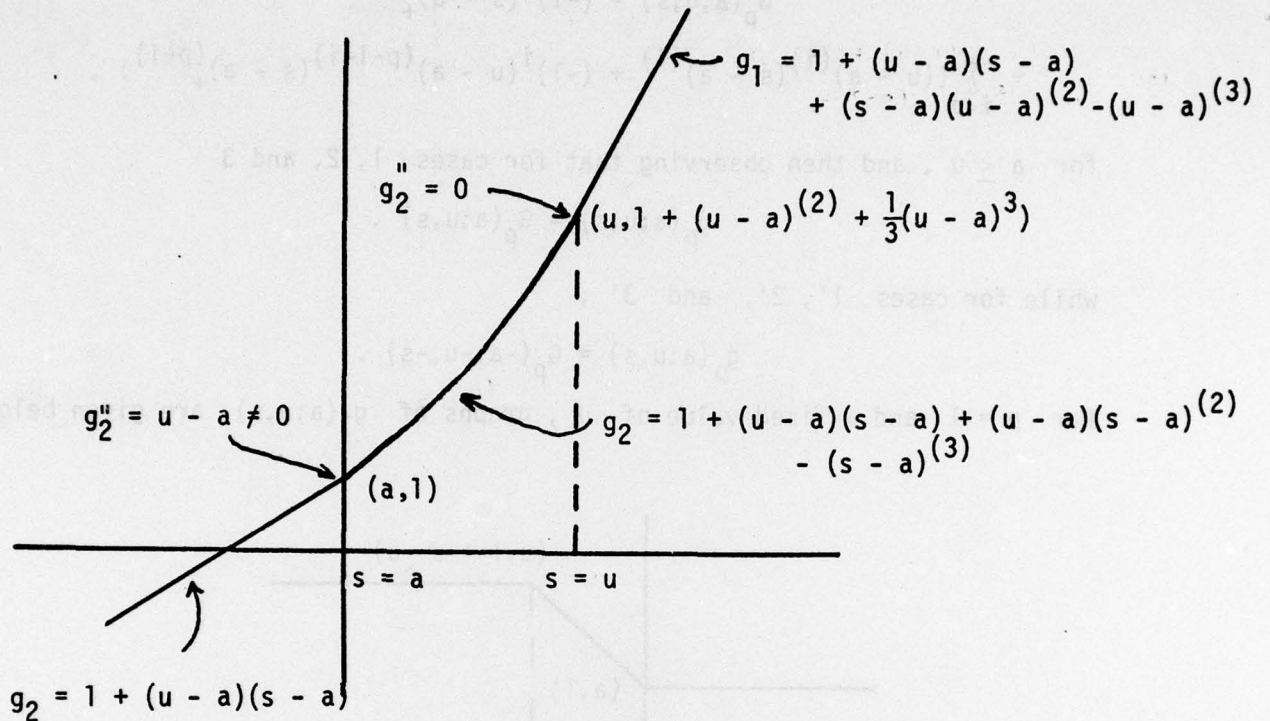
while for cases 1', 2', and 3'

$$g_p(a;u,s) = G_p(-a;-u,-s).$$

For $p = 1$ and a fixed value of u , graphs of $g_1(a;u,s)$ are given below.



For $p = 2$, the graph of the function $g_2(a; u, s)$ is given below for $a < u$. For $a > u$, the graph is flipped about $s = a$, as in the $p = 1$ case.



We note that g_2 is C^2 in s except at $s = a$, where it has a continuous first derivative, but not a continuous second derivative. In general g_p is C^{2p-2} in s , except at $s = a$, where it is C^{p-1} .

REFERENCES

1. R. E. Barnhill and G. M. Nielson, "Reproducing Kernel Functions for Sard Spaces of Type B*", SIAM J. Numer. Anal. 11 (1974) 37-44
2. A. Sard, Linear Approximation, Mathematical Surveys, No. 9, American Mathematical Society, Providence, RI, 1963

DISTRIBUTION LIST

Defense Documentation Center 2
Cameron Station
Alexandria, VA 22314

Library 2
Naval Postgraduate School
Monterey, CA 93940

Dean of Research 2
Naval Postgraduate School
Monterey, CA 93940

Department of Mathematics
C. O. Wilde, Chairman 1
Professor C. Comstock 1
Professor F. Faulkner 1
Professor R. Franke 1
Naval Postgraduate School
Monterey, CA 93940

Dr. Richard Lau 1
Office of Naval Research
1030 East Green St.
Pasadena, CA 91106

Professor R. E. Barnhill 1
Department of Mathematics
University of Utah
Salt Lake City, UT 84112

Professor G. M. Nielson 1
Department of Mathematics
Arizona State University
Tempe, AZ 85281

Chief of Naval Research 2
ATT: Mathematics Program
Arlington, VA 22217