

AD-A054 265

UNIVERSITY COLL CORK (IRELAND) DEPT OF MATHEMATICAL--ETC F/G 20/11
THE EDGE-FUNCTION METHOD (E.F.M.).(U)
MAY 78 P M QUINLAN

AFOSR-75-2768

UNCLASSIFIED

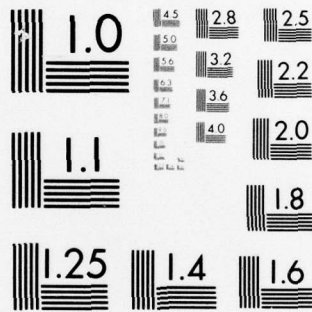
EOARD-TR-78-2

NL

[OF]
AD
A054265



END
DATE
FILMED
6 -78
DDC



MICROCOPY RESOLUTION TEST CHART
NATIONAL BUREAU OF STANDARDS-1963-A

AD A 054265
DDC FILE COPY

REPORT DOCUMENTATION PAGE		READ INSTRUCTIONS BEFORE COMPLETING FORM
1. Report Number EOARD-TR-78-2	2. Govt Accession No.	3. Recipient's Catalog Number
4. Title (and Subtitle) The Edge-Function Method (E.F.M.).	5. Type of Report & Period Covered Scientific Final rept. 1 July 75 - 30 June 77	
7. Author(s) Patrick M. Quinlan	8. Contract or Grant Number AFOSR-75-2768	
9. Performing Organization Name and Address University College of Cork Department of Mathematical Physics Cork, Ireland.	10. Program Element, Project, Task Area & Work Unit Numbers 61102F 9767-99-56	
11. Controlling Office Name and Address EOARD (BOX 14) FPO NY. 09510	12. Report Date 1 May 1978	
14. Monitoring Agency Name and Address EOARD (BOX 14) FPO N.Y. 09510	13. Number of Pages 5	
16. & 17. Distribution Statement Approved for public release; distribution unlimited.		
18. Supplementary Notes		
19. Key Words Edge-Function Method, Linear Boundary Value Problems, Laplace's Equation, Three Dimensional Elasticity, Numerical Methods		
20. Abstract The main algebraic and programming features of E.F.M. are illustrated by application to Laplace's equation for polygonal regions with elliptical cavities. The Basic Functions - Vertex, Edge and Mapped Polars - are obtained. Vertex equations, and Harmonic Fitting based on a discrete least squares criterion, are introduced. Extension is made to a region sub-divided into a series of elements as in (F.E.) work. Major areas of E.F. work - Elastostatics, Thin Plates and Vibrations of Thin Elastic Shells - are sketched, and some basic problems for 3-D elasticity are solved. The main features of E.F.M. are illustrated by numerical studies on the notch problem in Elastostatics and the vibration of a thin elastic shell with a square plan form.		

FORM 1473

402 948

DDIC
RECEIVED
MAY 23 1978
A

DISCLAIMER NOTICE

**THIS DOCUMENT IS BEST QUALITY
PRACTICABLE. THE COPY FURNISHED
TO DDC CONTAINED A SIGNIFICANT
NUMBER OF PAGES WHICH DO NOT
REPRODUCE LEGIBLY.**

9 May 1978

EOARD-TR-78-1

This report has been reviewed by the Information Office (EOARD/CMI) and is releasable to the National Technical Information Service (NTIS). At NTIS it will be releasable to the general public, including foreign nations.

This technical report has been reviewed and is approved for publication.

John T. Milton

JOHN T. MILTON
Scientific and Technical Information
Officer

Michael A. Greenfield

MICHAEL A. GREENFIELD, Ph.D.
Materials Liaison Officer

FOR THE COMMANDER

Daniel W. Seeger for

DANIEL R. SEGER, Major, USAF
Deputy Commander/Technical Director

ACCESSION for	
NTIS	UNCL. <input checked="" type="checkbox"/>
DDC	DDC <input type="checkbox"/>
UNANNOUNCED	<input type="checkbox"/>
JUSTIFICATION	
BY	
DISTRIBUTION/AVAILABILITY CODES	
Dist.	AVAIL. NO./OF SPECIAL
A	23 GB

THE EDGE-FUNCTION METHOD (E.F.M.)

ABSTRACT OF INVITED LECTURE by P. M. QUINLAN to

The International Symposium on Innovative Numerical Analysis in Applied Engineering Science, Versailles, 23-27 May 1977.

(The Research was carried out in cooperation with Professor J. E. Fitzgerald, and Professor S. N. Atluri, both of Georgia Institute of Technology).

TEXT

SCOPE OF THE EDGE-FUNCTION METHOD

The Edge-Function Method as applied to two-dimensional problems is a procedure for obtaining exact solutions to acceptable Mathematical Models of practical boundary value problems in regular or irregular polygonal regions with, or without, cavities. The method was originally developed by Quinlan [1] for the torsion of prismatic bars of polygonal cross-section.

In the succeeding 12 years it has been successfully applied to problems in the bending of isotropic thin plates [2,3,4]; coupled linear systems in elastostatics [4,5,6,7] and in moderately thick plates and shallow shells [8]; cracks and stress concentrations in elastostatics [9]; vibrations of Thin Plates [10] and vibrations of Shallow Shells [11]. Selections from relevant abstracts are:

"A general computer method is presented of solving a very wide range of swept-back wing and skew bridge problems with any boundary conditions and loadings, with or without cut-outs and elastic column supports". [2]

"The Edge-Function Method may be described as a piecing together of "asymptotic" solutions to a set of linear p.d.e.'s for the several parts of a domain D to satisfy the boundary conditions in a discrete least squares sense. In the present paper, application is made to problems in elastostatics, where D may be multiply connected, bounded externally by an irregular polygon and with curved holes in the interior. The various "asymptotic" problems are solved for (1) the infinite sector, for Vertex Functions, (2) the semi-infinite region, leading to Edge-Functions, and (3) a curved hole in an infinite region, leading to Mapped Polar Biharmonics. [7]

"A new method for the numerical solution of Reissner-type plate and displacement-type shallow shell equations is developed. By deriving for an arbitrary edge of a polygonal plate or shallow spherical or rectangular cylindrical, hyperbolic paraboloidal, or elliptic paraboloidal shell a set of "edge-functions", it is possible to obtain accurate solutions to these structural components subjected to various support and load conditions". [8]

"The present investigation extends the method of Edge-Functions to the determination of natural frequencies and associated mode shapes of free vibration of thin elastic plates with a variety of boundary conditions. The Edge-Function technique essentially associates an independent coordinate system with every edge of the plate, and for every edge employs functions (satisfying the governing plate vibration equations) that rapidly decay with increasing distance from the plate boundary. Appropriate superposition of solutions stemming from all edges of the plate leads to an approximate representation of the time-dependent deflection surface". [10]

"It can confidently be concluded that the edge-function method, using Edge-Functions and the newly developed "Shell Polar" functions, provides a rapid means of determining accurate values for the frequencies of free vibration and mode shapes. It computes, as a routine, approximate root mean square boundary residuals for each boundary function, thus providing a practical measure for judging the acceptability of the solution proffered". [11]

FUNDAMENTALS OF E.F.M. VIA LAPLACE'S EQUATION

Section 2 of the paper aims to illustrate as simply as possible the main algebraic and programming features of E.F.M. by applying it to Laplace's equation, $\nabla^2 u = 0$, for polygonal regions with elliptical cavities.

On superposing I harmonic solutions, u_i , that represent the main characteristics of the problem, we obtain

$$u = \sum_{i=1}^I A_i u_i ; \nabla^2 u_i = 0 , \tag{1}$$

where the I superposition constants A_i are evaluated numerically to satisfy, in an approximate way, the specified boundary conditions.

The method of harmonic fitting is developed, by expanding the boundary identity, say $u=0$, on a typical side j, $0 < x' < a'$, in a Fourier sine series

$$0 \equiv u(x') = \sum_{N=1}^{\infty} C_N \sin nx' ; C_N = \frac{2}{a'} \int_0^{a'} u(x') \sin nx' dx' \tag{2}$$

The series can, in practice, be truncated at N' terms giving the approximation

$$0 \equiv u(x') \approx \sum_{N=1}^{N'} C_N \sin nx' ; 0 < x' < a' ; n = N\pi/a' \tag{3}$$

provided that the series has convergence of order $1/N^3$ to ensure continuity of $u(x')$, which requires the two point, or vertex, equations

$$u(x') = 0 ; x' = 0 \text{ and } x' = a' \tag{4}$$

Approximation (3) then leads to the harmonic equations

$$C_N = 0 ; N = 1, \dots, N' \tag{5}$$

On writing a pair of vertex equations and N' harmonic equations for each side of the polygon, a system of I linear equations results for the unknowns A_i , which equations may be written as

$$\tilde{K} \bar{A} = \bar{b} , \tag{6}$$

where \tilde{K} is the coefficients matrix, and \bar{b} the right hand column vector.

The integral for C_N in (2) may require numerical integration. A better approach is to interpret (3) as the fitting of a trigonometric expression to $u(x')$, and on using a discrete least squares criterion of fit, we obtain

$$C_N = \frac{2}{M'+1} \sum_{M'=1}^{M'} u(x'_M) \sin nx'_M ; M' \geq N' \tag{7}$$

where x'_M are M' interior equidistant points on side x' . Note that the series for C_N is formally obtained by evaluating integral (3) numerically by the trapezoidal rule with $M'+1$ segments.

The basic problems - for the basic regions: infinite sector, semi-infinite strip and a hole in an infinite plane - encountered in putting together a suitable solution mix (1), are then solved. The resulting functions, called basic functions, are called the Vertex, Edge and Mapped Polar functions

respectively. Extension is made to mixed boundary conditions, and to polygons with elliptical indentations by the use of conformal mapping. A simple computer program is available to illustrate the basic features of E.F.M. for $\nabla^2 u = 0$ for a polygonal region, when u is specified on all boundary segments.

Fourier Cosine, and full Fourier series, are developed as alternatives to expansion (2), as these are required when dealing with Elastostatics and Orthotropic Thin Plates. Finally extension is made to a region divided into a series of elements, as in Finite Element work, and to cases where singularities occur either within or on the boundaries of the region.

A comprehensive computer program for Laplace/Poisson problems is available with illustrative examples, to act as a program prototype for the E.F.M. when applied to other areas - elastostatics, thin plates, vibrations etc.

Recent Research A largely self-contained paper [9] is due for publication. This sets the basis for dealing with coupled linear systems through the medium of elastostatics, and follows the general lines of section 1 to obtain the basic functions. Examples are given involving fracture and reentrant angles and a comprehensive program is available.

A companion work [14] on isotropic plates updates and extends considerably the earlier work [2], while [15] a Ph.D. thesis, to be represented in June, does a comprehensive job on anisotropic and orthotropic thin plates for polygonal regions with or without elliptic holes. This latter presents a general method for determining vertex functions directly from their eigenvalue determinant.

THREE-DIMENSIONAL ELASTICITY

Section 2 is a progress report on the development of E.F.M. for three-dimensional isotropic elasticity. The Papkovitch-Neuber potentials [15] for the class of displacements

$$\bar{s} = \bar{B} + \nabla X ; \nabla^2 \bar{B} = 0, \quad (8)$$

are the key to obtaining (1) Plane Functions that decay exponentially inwards from each plane boundary area, and (2) Wedge Functions that model the singular behaviour between two intersecting plane faces - the respective analogues of the Edge and Vertex Functions in [9].

The boundary conditions on each plane face (x', y') lead, analogous to (2), to a plane boundary identity

$$\psi(x', y') = 0, \quad (9)$$

and a discrete least-squares surface fitting criterion gives a double series for harmonic fitting, analogous to (7). Thus the functions and methods for 2-D have their counterparts in 3-D and comparative results are expected before the Symposium for the problems solved by Deak [16] using Boundary Integral.

The coefficients matrix \tilde{K} arising in (6) can be decomposed into

$$\tilde{K}_1 A = b - \tilde{K}_2 \bar{A}, \quad (10)$$

where, since the terms \tilde{K}_2 are of minor significance, their effects can be obtained by iteration on the banded matrix for k th-iteration:

$$\tilde{K}_1 A = \bar{b}^{(k)} \quad (11)$$

Usually three iterations provide an acceptable solution, the time spent on the iterations being only a few percent of that required to solve the banded matrix \tilde{K}_1 . Thus E.F.M. is now firmly within the banded matrix field, and is capable of dealing with any number of connected elements as in Finite Element work.

MAIN ADVANTAGES

The effective algorithmic method that has been developed for controlling the algebra [9], allied to a systems approach adopted to programming, facilitates the extension of E.F.M. into new areas.

Solutions for up to four different sizes of matrix are computed as a routine. Each solution vector provides an exact solution to the specified

problem but with slightly different boundary values, which are computed as a routine, the differences being termed the boundary residuals. If the residuals are within the limits within which an engineer can specify the boundary values, then E.F.M. offers as "exact" a solution as can be obtained to the problem.

Derived quantities e.g. moments, shears, are obtained as accurately as the primary quantity, and are quickly computed for several truncation levels.

Perhaps the greatest advantage of E.F.M. is that no pre-computer processing of the problem is required. Only the geometrical, load and material data are required and an E.F.M. program can be operated as a "black box" without the user having any knowledge of E.F.M.

ACKNOWLEDGEMENTS

P. M. Quinlan gratefully acknowledges research grants from E.O.A.R. from 1957-70, and travel grants 1972-76, without which E.F.M. would never have been developed. All three authors are pleased to acknowledge a recent grant by N.S.F. Eng.76 16418 to Georgia Institute of Technology for research on "The Edge-Function Method for 3-Dimensional Elasticity".

REFERENCES

1. Quinlan, P. M. (1964), "The Torsion of an Irregular Polygon", Proc.Roy.Soc., Vol. 282A.
2. Quinlan, P. M. (1968), "Polygon and Swept-Back plates with Cut-Outs and Column Supports", Proc.OAR Research Applications Conference, Washington 1968.
3. Quinlan, P. M. (1965), "The λ Method for Skew Plates", Proc. Fourth. U.S. Nat. Congr. App. Mech.
4. Quinlan, P. M. (1971), "Final Scientific Report on Grant AF EOAR-69-0049", With Computer Program QUINP, as an appendix.
5. O'Callaghan, M. J. (1972), "The Edge-Function Method for Linear Boundary Value Problems with Discontinuous Boundary Conditions", Ph.D. Thesis, U.C.C.
6. Quinlan, P. M. (1974), "The Edge-Function Method in Elastostatics" paper in "Studies in Numerical Analysis", Academic Press, London 1974.
7. Quinlan, P. M. (1974), "The Edge-Function Method", 16th British Colloquium Theoretical Mechanics, St. Andrews.
8. Desmukh, R. S. (1973), "The Edge-Function Method Applied to Moderately Thick Plates and Shallow Shells", Ph.D. thesis, University of Massachusetts.
9. Quinlan, P. M. and O'Callaghan, M. J. (1976), "The Edge-Function Method for Cracks and Stress Concentrations in 2-D Problems", to be published in Int.J. Num. Meth. Eng.
10. Tai, I. H. and Nash, W. A. (1973), "Vibrations of Thin Plates - A New Approach", AFOSR TR-74-0789, University of Massachusetts.
11. O'Callaghan, M. J., Nash, W. A. and Quinlan, P. M. (1975), "Vibration Analysis of Thin Shallow Spherical Shells Using the Edge-Function Method", AFOSR TR-72-2340, University of Massachusetts.
12. Quinlan, P. M. (1965), "The λ Method for Rectangular Plates", Proc.Roy.Soc., Vol. 288A.
13. Quinlan, P. M. and Cusens, A. J. (1977), "The Edge-Function Method in Bridge Slab Analysis", (in preparation).
14. Grannell, J. (1977), "The Edge-Function Method for Thin Anisotropic Plates", Ph. D. Thesis, U. C., Cork, (to be submitted June 1977).
15. Lurie, A. I., "Three-Dimensional Problems of the Theory of Elasticity", Wiley, (1964).
16. Deak, Alexander, L. (1972), "Numerical Solution of 3-D Elasticity Problems for Solid Rocket Grains", AFSC Report No. AFRPL-TR-71-140, Vol. 1.

NOTE: The complete paper will be published in The International Journal of Solids and Structures.