

AD-A055 583

SCIENCE APPLICATIONS INC BERKELEY CALIF

F/G 20/14

A WIRE PASSING BY A CIRCULAR APERTURE IN AN INFINITE GROUND PLA--ETC(U)

JUN 77 K S LEE, F C YANG

F29601-76-C-0125

NL

UNCLASSIFIED

AFWL-TR-77-52

| of |
AD
A055 583



END
DATE
FILMED
8 -78
DDC

CAPT Hudson

FURTHER TRAN

AFWL-TR-77-52

AFWL-TR-77-52

9

2

AD A 055583

A WIRE PASSING BY A CIRCULAR APERTURE IN AN INFINITE GROUND PLANE

Science Applications Inc.
Berkeley, CA 94701

June 1977

Final Report

Approved for public release; distribution unlimited.

AD No. _____
DDC FILE COPY



DDC
JUN 22 1978
E

78 06 10 13A

AIR FORCE WEAPONS LABORATORY
Air Force Systems Command
Kirtland Air Force Base, NM 87117

This final report was prepared by Science Applications, Inc., Berkeley California, under Contract F29601-76-C-0125, Job Order 12090513, with the Air Force Weapons Laboratory, Kirtland Air Force Base, New Mexico. Capt Harrison (ELP) was the Laboratory Project Officer-in-Charge.

When US Government drawings, specifications, or other data are used for any purpose other than a definitely related Government procurement operation, the Government thereby incurs no responsibility nor any obligation whatsoever, and the fact that the Government may have formulated, furnished, or in any way supplied the said drawings, specifications, or other data is not to be regarded by implication or otherwise as in any manner licensing the holder or any other person or corporation or conveying any rights or permission to manufacture, use, or sell any patented invention that may in any way be related thereto.

This report has been reviewed by the Information Office (OI) and is releasable to the National Technical Information Service (NTIS). At NTIS, it will be available to the general public, including foreign nations.

This technical report has been reviewed and is approved for publication.

Michael G. Harrison

MICHAEL G. HARRISON
Captain, USAF
Project Officer

FOR THE COMMANDER

Aaron B. Loggins

AARON B. LOGGINS, Lt Colonel, USAF
Chief, Phenomenology & Technology Br

James L. Griggs, Jr.

JAMES L. GRIGGS, JR.
Colonel, USAF
Chief, Electronics Division

DO NOT RETURN THIS COPY. RETAIN OR DESTROY.

UNCLASSIFIED

SECURITY CLASSIFICATION OF THIS PAGE (When Data Entered)

REPORT DOCUMENTATION PAGE		READ INSTRUCTIONS BEFORE COMPLETING FORM
1. REPORT NUMBER 18 AFWL TR-77-52	2. GOVT ACCESSION NO.	3. RECIPIENT'S CATALOG NUMBER
4. TITLE (and Subtitle) 6 A WIRE PASSING BY A CIRCULAR APERTURE IN AN INFINITE GROUND PLANE	5. TYPE OF REPORT & PERIOD COVERED 9 Final Report	
7. AUTHOR(s) K.S.H. Lee and F.C. Yang Dikewood Corporation, Westwood Research Branch Los Angeles, California 90024	8. CONTRACT OR GRANT NUMBER(s) 10 F29601-76-C-0125 ✓	6. PERFORMING ORG. REPORT NUMBER
9. PERFORMING ORGANIZATION NAME AND ADDRESS Science Applications, Inc. POB 277 Berkeley, California 94701	10. PROGRAM ELEMENT, PROJECT, TASK AREA & WORK UNIT NUMBERS 64747F 12 12090513 17051	
11. CONTROLLING OFFICE NAME AND ADDRESS Air Force Weapons Laboratory (ELP) Kirtland AFB, New Mexico 87117	12. REPORT DATE 11 June 1977	13. NUMBER OF PAGES 28 12 31p ✓
14. MONITORING AGENCY NAME & ADDRESS (if different from Controlling Office) 10 K.S.H. Lee F.C. Yang	15. SECURITY CLASS. (of this report) Unclassified	15a. DECLASSIFICATION/DOWNGRADING SCHEDULE
16. DISTRIBUTION STATEMENT (of this Report) Approved for public release; distribution unlimited.		
17. DISTRIBUTION STATEMENT (of the abstract entered in Block 20, if different from Report)		
18. SUPPLEMENTARY NOTES		
19. KEY WORDS (Continue on reverse side if necessary and identify by block number) Aperture Electromagnetic Pulse (EMP) Coupling Through Apertures Wires Near Apertures		
20. ABSTRACT (Continue on reverse side if necessary and identify by block number) A procedure is given to calculate the elements of an equivalent circuit representation of an aperture in an infinite ground plane for a cable passing by the aperture and parallel to the ground plane. For an electrically small hole whose linear dimensions are much smaller than the shortest distance between the hole's center and the wire, explicit simple working formulas are obtained for all the elements (impedances and generators) in the equivalent circuit. When the restriction on the hole's size relative		

next page

DD FORM 1 JAN 73 1473

EDITION OF 1 NOV 65 IS OBSOLETE

UNCLASSIFIED

SECURITY CLASSIFICATION OF THIS PAGE (When Data Entered)

06 19 134
409 694

JOB

UNCLASSIFIED

SECURITY CLASSIFICATION OF THIS PAGE(When Data Entered)

(B1k 20)

to the distance from the wire is removed, explicit but somewhat complicated expressions for the equivalent generators are derived. These expressions are plotted against various pertinent length parameters of the geometry of the problem.

SECURITY CLASSIFICATION OF THIS PAGE(When Data Entered)

CONTENTS

<u>Section</u>		<u>Page</u>
I	INTRODUCTION	3
II	FORMULATION OF THE PROBLEM	5
III	SMALL-HOLE APPROXIMATION	10
IV	MODERATE-SIZED HOLE	17
	APPENDIX A	23
	APPENDIX B	26
	REFERENCES	28

ACCESSION for		
DTIC	Write Section	<input checked="" type="checkbox"/>
DDC	Diff Section	<input type="checkbox"/>
UNANNOUNCED		<input type="checkbox"/>
JUSTIFICATION.....		
.....		
BY.....		
DISTRIBUTION/AVAILABILITY CODES		
Dist.	AVAIL.	and/or SPECIAL
A		

ILLUSTRATIONS

<u>Figure</u>		<u>Page</u>
1	A wire passing by an aperture lying in an infinite ground plane.	4
2	(a). Coordinate system of the geometry of the problem. (b). Cross-sectional view of Figure 2(a).	6
3	Equivalent circuit of a small hole ($R_0 \gg$ hole's dimensions). Here, j replaces $-i$ in the text.	16
4	Effect of hole size on the source factor f_s , where f_s is defined as $V_{eq} = f_s V_{eq, \text{small hole}}$, $I_{eq} = f_s I_{eq, \text{small hole}}$.	20
5	Effect of the distance of the wire from the hole and/or ground plane on the source factor f_s , where f_s is defined in Figure 4.	21

I. INTRODUCTION

One of the most common interaction problems found on an aircraft is a cable passing by an aperture, such as a window, the seams of a passenger door, or an open wheel well. The main concern is that large EMP related currents may be induced on a cable passing near these kinds of apertures and eventually propagate to mission-critical equipment. In order to perform a reliable vulnerability assessment of such equipment the equivalent circuit representation of the aperture must be known from which it is then a straightforward matter to calculate the induced cable currents from familiar transmission-line equations. The present report is devoted to the determination of an equivalent lumped network representation of an aperture lying in an infinite, perfectly conducting plane with an infinitely long wire running parallel to the plane (Fig. 1).

The interaction problem between a cable and an aperture has been treated in the past, almost exclusively for a coaxial cable with apertures in the cable shield [1-5]. Reference [6] appears to be the only article dealing with the geometry shown in Fig. 1, but it considers only the two equivalent sources of a small circular hole and leaves out the impedance elements in the lumped network representation.

In Section II, an integral equation for the aperture electric field is first formulated under the thin-wire assumption. The resulting equation is further simplified through a quasi-static approximation and supplemented by another integral equation relating the aperture electric field and the short-circuited electric field on the plane. Section III treats the case of a small hole in which the shortest distance between the hole's center and the wire is much larger than the hole's linear dimension. Explicit simple expressions are obtained for all the lumped elements (impedances and generators) in the network representation. In Section IV, the restriction on the hole's size relative to the distance from the wire is removed. Explicit but somewhat complicated expressions are derived for the equivalent voltage and current sources; data calculated from these expressions are presented graphically for various relevant length parameters involved in Fig. 1.

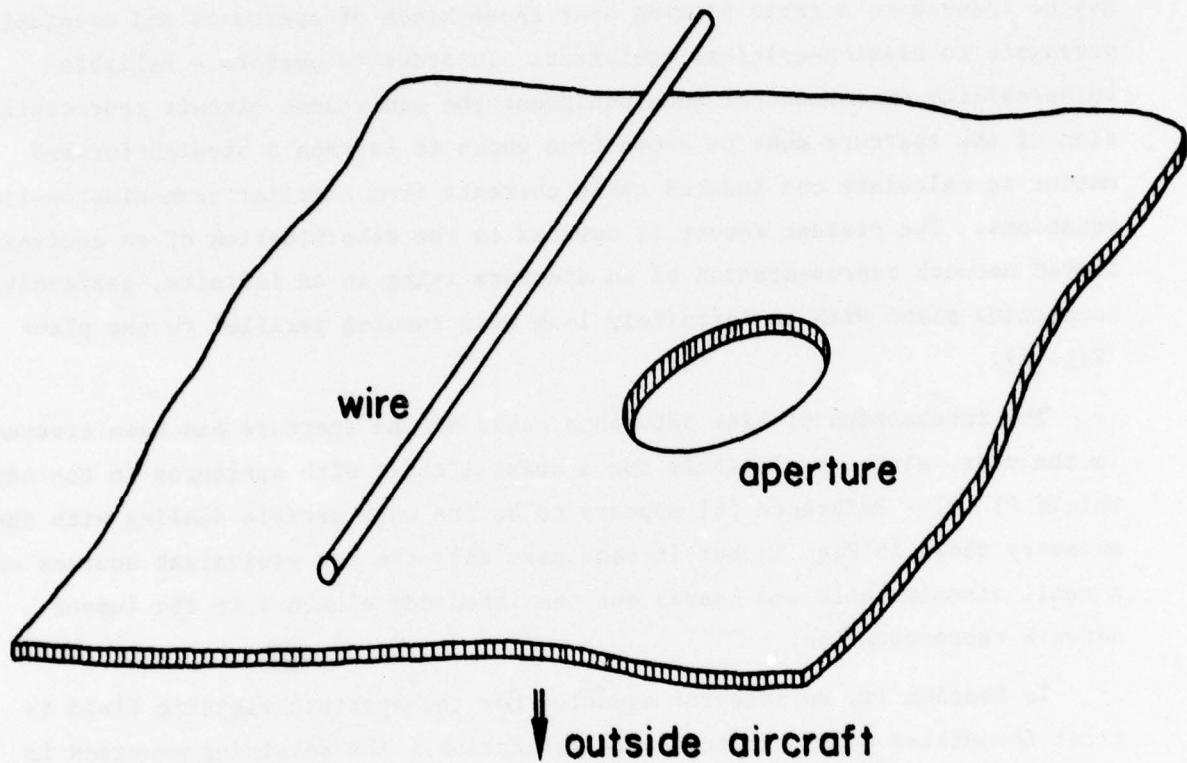


Figure 1. A wire passing by an aperture lying in an infinite ground plane.

II. FORMULATION OF THE PROBLEM

In this section we will first set up the integral equation for the tangential electric field in the aperture (Fig. 2) under the assumption that the wire is very thin compared to the distance between the wire and the conducting plate. The resulting equation will be simplified further by additional physically reasonable assumptions and an approximate analytical solution will be obtained.

Immediately below the plate ($y = 0^-$) the scattered tangential magnetic field is given by, with time convention $e^{-i\omega t}$ suppressed throughout,

$$\hat{y} \times \underline{H}(x, 0^-, z) = 2i\omega\epsilon \hat{y} \times \left(\underline{I} + \frac{1}{k^2} \nabla \nabla \right) \cdot \iint_A G(x, 0^-, z; x', 0, z') [\hat{y} \times \underline{E}(x', z')] dx' dz'$$

where the surface integral is taken over the aperture A and the free-space Green's function is

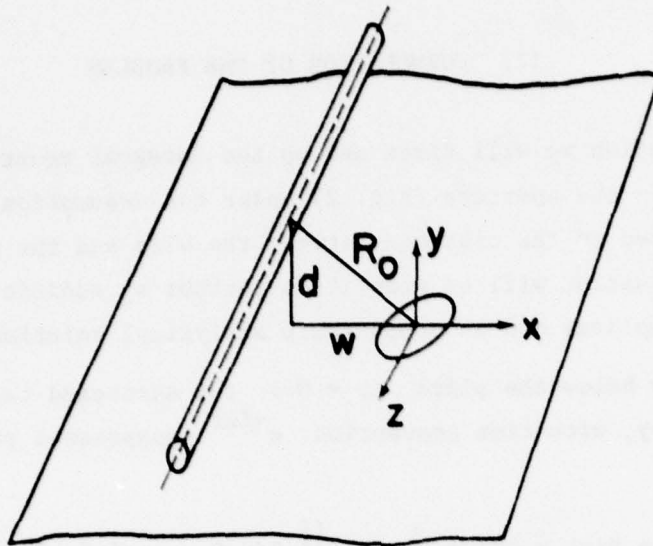
$$G(x, y, z; x', y', z') = \frac{1}{4\pi} \frac{e^{ik\sqrt{(x-x')^2 + (y-y')^2 + (z-z')^2}}}{\sqrt{(x-x')^2 + (y-y')^2 + (z-z')^2}}$$

Immediately above the plate ($y = 0^+$) the expression of the scattered field is more complicated and is given by (see Appendix A)

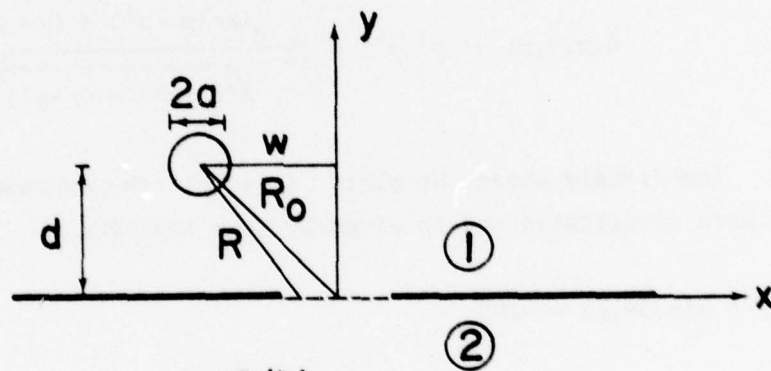
$$\begin{aligned} \hat{y} \times \underline{H}(x, 0^+, z) &= -\hat{z} H_x^W \\ &- 2i\omega\epsilon \hat{y} \times \left(\underline{I} + \frac{1}{k^2} \nabla \nabla \right) \cdot \iint_A G(x, 0^+, z; x', 0, z') [\hat{y} \times \underline{E}(x', z')] dx' dz' \end{aligned}$$

where H_x^W is the magnetic field at $y = 0^+$ due to the wire current and is given by

$$H_x^W = -i\omega\epsilon \iint_A K(R, z; R', z') E_z(x', z') dx' dz' \quad (1)$$



2(a)



2(b)

Figure 2(a). Coordinate system of the geometry of the problem.
 (b). Cross-sectional view of Figure 2(a).

with

$$K(R, z; R', z') = \frac{i}{2\pi} \frac{d^2}{RR'} \int_{-\infty}^{\infty} \frac{H_0^{(1)'}(\zeta R) H_0^{(1)'}(\zeta R')}{H_0^{(1)}(2\zeta d) - H_0^{(1)}(\zeta a)} e^{ih(z-z')} dh$$

$$R = \sqrt{d^2 + (x+w)^2}, \quad R' = \sqrt{d^2 + (x'+w)^2}, \quad \zeta = \sqrt{k^2 - h^2}$$

Finally, we match the tangential magnetic field across the aperture and the following integro-differential equation for the tangential aperture electric field results:

$$4 \hat{y} \times \left(\mathbf{Q} + \frac{1}{k^2} \nabla_{\zeta} \nabla_{\zeta}' \right) \cdot \iint_A G(x, 0, z; x', 0, z') [\hat{y} \times \underline{E}(x', z')] dx' dz' \pm \frac{1}{i\omega\epsilon} \hat{y} \times \underline{H}_{sc} \\ = -\hat{z} \frac{1}{i\omega\epsilon} H_x^w \quad (2)$$

where $+\underline{H}_{sc}$ ($-\underline{H}_{sc}$) is the short-circuited magnetic field when the sources are in region 2 (region 1).

In what follows, we will simplify (2) under certain physically reasonable assumptions. First, let us estimate the order of magnitude of the term on the right-hand side of (2). Obviously, the main contribution of $K(R, z; R', z')$ will come from the neighborhood where h is close to k , i.e., $|\zeta| \ll 1$. Thus, one can use the small-argument expansions for the Hankel function and obtains

$$K(R, z; R', z') \sim \frac{-1}{\pi^2 \ln(2d/a)} \frac{d^2}{R^2 R'^2} \int_{-\infty}^{\infty} \frac{1}{k^2 - h^2} e^{ih(z-z')} dh \\ = \frac{i}{\pi k \ln(2d/a)} \frac{d^2}{R^2 R'^2} e^{ik|z-z'|}$$

Thus, H_x^w is given by, with $Z_0 = \sqrt{\mu/\epsilon}$,

$$H_x^w \sim \frac{1}{Z_0 \pi \ln(2d/a)} \frac{d^2}{R^2} \iint_A \frac{1}{R'^2} E_z(x', z') e^{ik|z-z'|} dx' dz'$$

from which one immediately deduces that

$$H_x^w \propto \frac{1}{\ln(2d/a)} \frac{d^2 A}{R_0^4} H_{sc}$$

with $R_0^2 = d^2 + w^2$. Thus, if either $A \ll R_0^2$ or $d \ll R_0$ or $\ln(2d/a) \gg 1$, the right-hand side of (2) can be neglected, implying that the effect of the wire on the aperture field is negligible.

Next, we make the assumption that the wavelength is much larger than all the cross-sectional dimensions of Fig. 2. Equation (2) is finally simplified to the following form:

$$\nabla_t \nabla_t \cdot \iint_A \frac{\hat{y} \times \underline{E}(x', z')}{\sqrt{(x-x')^2 + (z-z')^2}} dx' dz' = \pm i\omega\mu\pi H_{sc} \quad (3)$$

It is to be noted that equation (3) alone is not enough to determine the total tangential electric field in the aperture. This is not unexpected because under the quasi-static approximation the electric and magnetic problems become uncoupled. To get another equation we turn our attention to the incident electric field. To this end one goes through the same procedure that leads to (2) and obtains the integro-differential equation by matching the normal electric field at the aperture,

$$\begin{aligned} -4 \hat{y} \cdot \nabla_t \times \iint_A G(x, 0, z; x', 0, z') [\hat{y} \times \underline{E}(x', z')] dx' dz' \pm \hat{y} \cdot \underline{E}_{sc} \\ = E_y^w \end{aligned} \quad (4)$$

where \underline{E}_{sc} is the short-circuited electric field; E_y^w is the electric field at $y = 0$ due to the wire current and is given by

$$E_y^w = \frac{\partial}{\partial z} \iint_A K(R, z; R', z') E_z(x', z') dx' dz' \quad (5)$$

By the same argument as above the right-hand side of (4) can be neglected. After making the quasi-static assumption equation (4) is simplified to

$$\hat{y} \cdot \nabla_t \times \iint_A \frac{\hat{y} \times \underline{E}(x', z')}{\sqrt{(x-x')^2 + (z-z')^2}} dx' dz' = \pm \pi \hat{y} \cdot \underline{E}_{sc} \quad (6)$$

Equations (1), (3), (5) and (6) constitute the formulation of the problem under the quasi-static and thin-wire approximations. It should be pointed out that if one wants to obtain the first two terms of the aperture magnetic current $\hat{y} \times \underline{E}$ in the power series expansion in frequency, then one has also to keep two terms in the power series expansion in frequency of \underline{E}_{sc} in equation (6). In Appendix B, equations (3) and (6) are discussed in more detail.

III. SMALL-HOLE APPROXIMATION

If the characteristic length of the aperture is much smaller than the distance between the wire and the center of the aperture, one can easily obtain from (1), (3), (5) and (6) the network representation of the aperture for the TEM mode of the wire-plate geometry shown in Fig. 2.

With the aperture closed the normalized field distributions of the TEM mode for the geometry of Fig. 2 are given by

$$\underline{e}_0 = \frac{1}{\sqrt{N}} \frac{2(x+w)y d \hat{x} - [(x+w)^2 - y^2 + d^2] d \hat{y}}{\pi [(x+w)^2 + (y-d)^2] [(x+w)^2 + (y+d)^2]} \quad (7)$$

$$\underline{h}_0 = \hat{z} \times \underline{e}_0$$

where $N = \ln(2d/a)/(2\pi)$ is the normalization factor. In conformity with the definitions of Ref. [1], we have

$$\begin{aligned} \underline{E}_t(x,y,z) &= V_0(z) \underline{e}_0(x,y), & \underline{H}_t(x,y,z) &= I_0(z) \underline{h}_0(x,y) \\ V_0(z) &= V(z)/\sqrt{N}, & I_0(z) &= I(z)\sqrt{N} \end{aligned} \quad (8)$$

and

$$\frac{dV}{dz} = i\omega LI, \quad \frac{dI}{dz} = i\omega CV$$

where

$$L = \mu \ln(2d/a)/(2\pi), \quad C = 2\pi\epsilon/\ln(2d/a)$$

and V_0 , I_0 , V , I are respectively the mode voltage, mode current, line voltage and line current.

With the aperture open, the current on the wire will be perturbed. The perturbation on the TEM mode can be calculated by examining the fields far away from the aperture. Clearly, the fields of interest are the fields which arise from the wire current. From (1) one has

$$H_x^w = -i\omega\epsilon \iint_A K(R,z; R',z') E_z(x',z') dx' dz', \quad \text{at } y = 0+$$

which gives, for $z \rightarrow \infty$,

$$H_x^w \sim \frac{\sqrt{\epsilon/\mu}}{\pi \ln(2d/a)} \frac{d^2}{d^2 + (x+w)^2} \iint_A \frac{1}{d^2 + (x'+w)^2} E_z(x',z') e^{ik(z-z')} dx' dz' \quad (9)$$

By virtue of (7) and (8) the corresponding line current is obtained from (9) to be

$$I(z) = \frac{1}{2\pi Z_c} \iint_A \frac{d}{d^2 + (x'+w)^2} E_z(x',z') e^{ik(z-z')} dx' dz', \quad z \rightarrow \infty \quad (10)$$

with $Z_c = \sqrt{L/C} = \sqrt{\mu/\epsilon} \ln(2d/a)/(2\pi)$. Similarly, one has from (5)

$$E_y^w = \frac{\partial}{\partial z} \iint_A K(R,z; R',z') E_z(x',z') dx' dz' \quad (11)$$

$$\sim \frac{-1}{\pi \ln(2d/a)} \frac{d^2}{d^2 + (x+w)^2} \iint_A \frac{1}{d^2 + (x'+w)^2} E_z(x',z') e^{ik(z-z')} dx' dz'$$

and

$$V(z) = \frac{1}{2\pi} \iint_A \frac{d}{d^2 + (x'+w)^2} E_z(x',z') e^{ik(z-z')} dx' dz', \quad z \rightarrow \infty \quad (12)$$

Note that (10) and (12) can also be obtained from the approach suggested in Ref. [1]. When the aperture is electrically small, equation (10) becomes

$$I(z) = \frac{1}{2\pi Z_c} e^{ikz} \iint_A \frac{d}{d^2 + (x' + w)^2} E_z(x', z') (1 - ikz') dx' dz' \quad (13)$$

and (12) becomes

$$V(z) = \frac{1}{2\pi} e^{ikz} \iint_A \frac{d}{d^2 + (x' + w)^2} E_z(x', z') (1 - ikz') dx' dz' \quad (14)$$

So far the hole has been assumed only electrically small. The unknown aperture field E_z in (13) and (14) is in general to be determined by solving (3) and (6). We now assume the aperture to be very small compared to $(d^2 + w^2)^{1/2}$. Then equation (13) can be approximated as

$$\begin{aligned} I(z) &\sim \frac{1}{2\pi Z_c} \frac{d}{d^2 + w^2} e^{ikz} \iint_A E_z(x', z') (1 - ikz') dx' dz' \\ &= \frac{\exp(ikz)}{2} \left[\frac{i\omega\mu}{\pi Z_c} (d/R_0^2) \underline{m} \cdot \hat{x} - \frac{i\omega Z_w}{\pi Z_c} (d/R_0^2) \underline{p} \cdot \hat{y} \right] \end{aligned} \quad (15)$$

where

$$\iint_A \hat{y} \times \underline{E}(\underline{r}'_s) dx' dz' = i\omega\mu \underline{m}$$

$$\frac{\epsilon}{2} \iint_A \underline{r}'_s \times [\hat{y} \times \underline{E}(\underline{r}'_s)] dx' dz' = \underline{p}$$

$$\underline{r}'_s = \hat{x} x' + \hat{z} z', \quad Z_w = \sqrt{\mu/\epsilon}$$

Similarly, equation (14) gives

$$V(z) \sim \frac{\exp(ikz)}{2} \left[\frac{i\omega\mu}{\pi} \frac{d}{R_o^2} \underline{m} \cdot \hat{x} - \frac{i\omega Z_w}{\pi} \frac{d}{R_o^2} \underline{p} \cdot \hat{y} \right] \quad (16)$$

Equations (15) and (16) can be easily shown to satisfy the following transmission-line equations:

$$\frac{dV}{dz} = i\omega LI + i\omega\mu \frac{d}{\pi R_o^2} \hat{x} \cdot \underline{m} \delta(z) \quad (17)$$

$$\frac{dI}{dz} = i\omega CV - i\omega \frac{Z_w}{Z_c} \frac{d}{\pi R_o^2} \hat{y} \cdot \underline{p} \delta(z)$$

With equation (17) we are in a position to find the lumped network representation of the aperture for the TEM mode of the geometry shown in Fig. 2. To find the equivalent sources we assume there are \underline{E}_{sc} and \underline{H}_{sc} externally driving the aperture from the $y < 0$ region. Then, using the definitions

$$\underline{p} = \epsilon\alpha_e \underline{E}_{sc}, \quad \underline{m} = -\frac{\alpha_m}{m} \underline{H}_{sc}$$

where α_e and α_m are the electric and the magnetic polarizabilities, we have from (17)

$$\frac{dV}{dz} = i\omega LI + V_{eq} \delta(z) \quad (18)$$

$$\frac{dI}{dz} = i\omega CV + I_{eq} \delta(z)$$

where the equivalent voltage V_{eq} and the equivalent current I_{eq} are given by

$$V_{eq} = -i\omega\mu \frac{d}{\pi R_0^2} \hat{x} \cdot \underline{\alpha}_m \cdot \underline{H}_{sc} \quad (18.a)$$

$$I_{eq} = -i\omega\epsilon\alpha_e \frac{Z_w}{Z_c} \frac{d}{\pi R_0^2} \hat{y} \cdot \underline{E}_{sc}$$

which agrees with the results reported in Ref. [6].

To calculate the lumped impedance elements of the aperture, we assume a TEM mode propagating along the wire. Then, we have

$$\begin{aligned} p &= -\epsilon\alpha_e \underline{E}_t \\ &= -\epsilon\alpha_e \underline{V}_{e_0} / \sqrt{N} = \frac{\epsilon\alpha_e}{N} \frac{d}{\pi R_0^2} V \hat{y} \end{aligned} \quad (19)$$

$$\begin{aligned} \underline{m} &= \underline{\alpha}_m \cdot \underline{H}_t \\ &= \sqrt{N} I \underline{\alpha}_m \cdot \underline{h}_0 = \frac{d}{\pi R_0^2} I \underline{\alpha}_m \cdot \hat{x} \end{aligned}$$

Substitution of (19) in (17) gives

$$\frac{dV}{dz} = i\omega[L + L_a \delta(z)]I \quad (20)$$

$$\frac{dI}{dz} = i\omega[C + C_a \delta(z)]V$$

where

$$L_a = \mu \left(\frac{d}{\pi R_0^2} \right)^2 \hat{x} \cdot \underline{\alpha}_m \cdot \hat{x} \quad (20.a)$$

$$C_a = -\epsilon\alpha_e \left(\frac{Z_w}{Z_c} \frac{d}{\pi R_0^2} \right)^2$$

Equations (18) and (20) enable one to draw the network representation of the aperture as shown in Fig. 3. In the next section we will remove the restriction that the hole size is small compared to the distance between the wire and the hole.

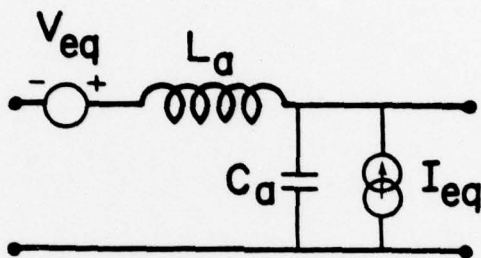
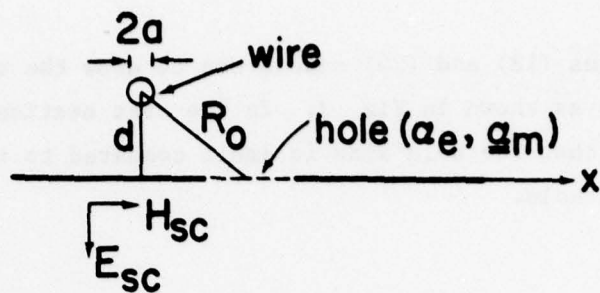


$$V_{oc} = I_{oc} \left(\frac{R}{S} \right) + I_{oc} \left(\frac{R}{S} \right) \frac{1}{S} = I_{oc} \left(\frac{R}{S} \right) \left(1 + \frac{1}{S} \right)$$

$$I_{oc} = \frac{V_{oc}}{\left(\frac{R}{S} \right) \left(1 + \frac{1}{S} \right)}$$

$$I_{oc} = \frac{V_{oc} S}{R \left(1 + \frac{1}{S} \right)}$$

$$I_{oc} = \frac{V_{oc} S^2}{R(S+1)}$$



$$V_{eq} = j\omega\mu \left(\frac{d}{\pi R_0^2} \right) \hat{x} \cdot \underline{\alpha}_m \cdot H_{sc}, \quad I_{eq} = j\omega\epsilon \left(\frac{d}{\pi R_0^2} \right) \frac{\alpha_e Z_w}{Z_c} E_{sc}$$

$$L_a = \mu \alpha_{m,xx} \left(\frac{d}{\pi R_0^2} \right)^2 \quad -C_a = \mu \frac{\alpha_e}{Z_c^2} \left(\frac{d}{\pi R_0^2} \right)^2$$

$$Z_c = \frac{1}{2\pi} Z_w \cosh^{-1}(d/a) \approx \frac{1}{2\pi} Z_w \ln(2d/a), \quad Z_w = (\mu/\epsilon)^{1/2}$$

Figure 3. Equivalent circuit of a small hole ($R_0 \gg$ hole's dimensions). Here, j replaces $-i$ in the text.

IV. MODERATE-SIZED HOLE

In Section III the line current and the line voltage are derived under the long wavelength approximation. Then, the hole is taken to be much smaller than the distance between the wire and the hole and a lumped network representation is obtained for the hole. In some practical cases the wire may be close to the hole and the results obtained in Section III for the small hole will no longer apply. In this section we will derive the equivalent sources for a moderate-sized circular hole and leave out from our consideration the much less important elements of the equivalent network representation, namely, the impedances of the hole. By a moderate-sized circular hole it is meant that the hole's diameter is comparable to the distance between the wire and the hole's center.

The starting points are equations (13) and (14) in which the unknown quantity is the aperture field E_z , which satisfies (3) and (6). Assuming that \underline{E}_{sc} and \underline{H}_{sc} , which excite the circular hole from the $y < 0$ region, are uniform, one has [7,8]

$$\begin{aligned}
 E_z = & - (\rho/\pi) (b^2 - \rho^2)^{-1/2} \cos \phi \hat{y} \cdot \underline{E}_{sc} \\
 & + \frac{2i\omega\mu}{3\pi} (b^2 - \rho^2)^{-1/2} [(2b^2 - 2\rho^2 + \rho^2 \cos^2 \phi) \hat{x} \cdot \underline{H}_{sc} - \rho^2 \sin \phi \cos \phi \hat{z} \cdot \underline{H}_{sc}]
 \end{aligned}
 \tag{21}$$

where b is the radius of the circular hole and ρ, ϕ are the polar coordinates with respect to the hole with

$$\begin{aligned}
 z' &= \rho \cos \phi \\
 x' &= \rho \sin \phi
 \end{aligned}
 \tag{22}$$

One can convince oneself that (21) indeed satisfies (3) and (6).

After substituting (21) and (22) into (13), it is seen that the integrals whose integrands are independent of ω vanish and the remaining terms are given by

$$I(z) = \frac{d}{2\pi Z_c} e^{ikz} \left\{ \frac{2i\omega\mu}{3\pi} \hat{x} \cdot \underline{H}_{sc} \iint_0^b \int_0^{2\pi} \frac{2b^2 - 2\rho^2 + \rho^2 \cos^2 \phi}{\sqrt{b^2 - \rho^2} [(\rho \sin \phi + w)^2 + d^2]} \rho d\phi d\rho \right. \\ \left. + \frac{i\omega\sqrt{\mu\epsilon}}{\pi} \hat{y} \cdot \underline{E}_{sc} \iint_0^b \int_0^{2\pi} \frac{\rho^2 \cos^2 \phi}{\sqrt{b^2 - \rho^2} [(\rho \sin \phi + w)^2 + d^2]} \rho d\phi d\rho \right\}$$

It should be pointed out that this expression can be directly written down from the general theory of [1]. After some lengthy manipulation the integrals are evaluated to give

$$I(z) = \frac{e^{ikz}}{2} \left[\frac{2i\omega\mu b^2}{\pi Z_c} \hat{x} \cdot \underline{H}_{sc} F + \frac{i\omega\epsilon Z_w b^2}{\pi Z_c} \hat{y} \cdot \underline{E}_{sc} F \right] \quad (23)$$

where

$$F = (1 + A) \sin^{-1} \beta + B \ln(\alpha + \sqrt{\alpha^2 - 1}) - d/b$$

$$A = (d^2 - w^2)/b^2, \quad B = 2dw/b^2$$

$$\alpha = \frac{1}{2} \sqrt{(X+1)^2 + Y^2} + \frac{1}{2} \sqrt{(X-1)^2 + Y^2}$$

$$\beta = \frac{1}{2} \sqrt{(X+1)^2 + Y^2} - \frac{1}{2} \sqrt{(X-1)^2 + Y^2}$$

$$X = \frac{1}{\sqrt{2}} \frac{\sqrt{(1+A)^2 + B^2} + (1+A)}{\sqrt{(1+A)^2 + B^2}}$$

$$Y = \frac{1}{\sqrt{2}} \frac{\sqrt{(1+A)^2 + B^2} - (1+A)}{\sqrt{(1+A)^2 + B^2}}$$

Similarly, the evaluation of (14), as expected, gives

$$V(z) = Z_c I(z) \quad (24)$$

Equations (23) and (24) will satisfy (18) provided that the equivalent voltage source V_{eq} and the current source I_{eq} are given by

$$V_{eq} = f_s V_{eq, \text{ small hole}} \quad (25)$$

$$I_{eq} = f_s I_{eq, \text{ small hole}}$$

where

$$f_s = \frac{3R_o^2}{2bd} F$$

We leave it to the interested reader to show that f_s indeed reduces to unity when $R_o \gg 2b$. Curves for the factor f_s as a function of $2b/R_o$ and d/R_o are given in Figs. 4 and 5.

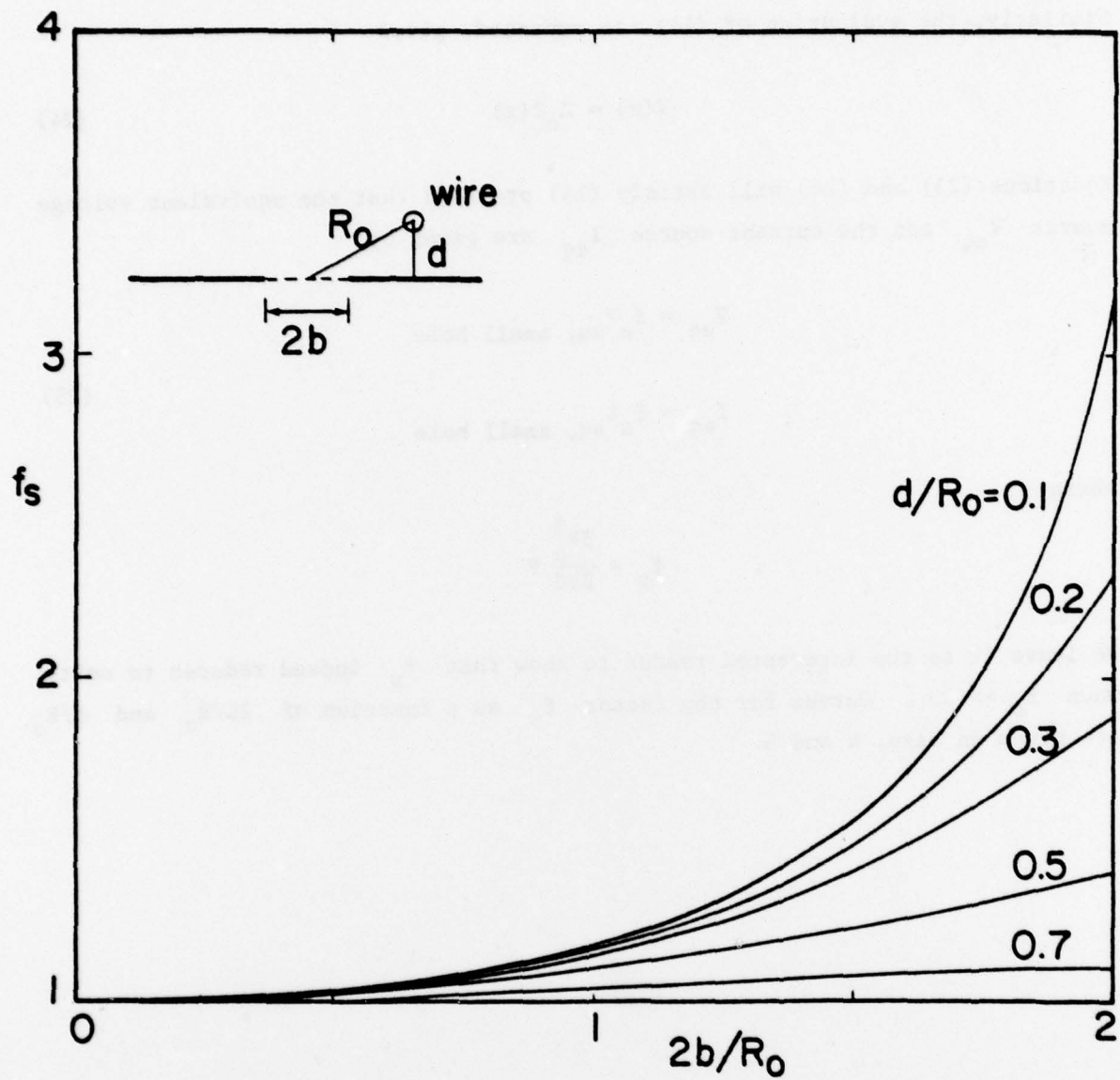


Figure 4. Effect of hole size on the source factor f_s , where f_s is defined as $V_{eq} = f_s V_{eq, \text{small hole}}$, $I_{eq} = f_s I_{eq, \text{small hole}}$.

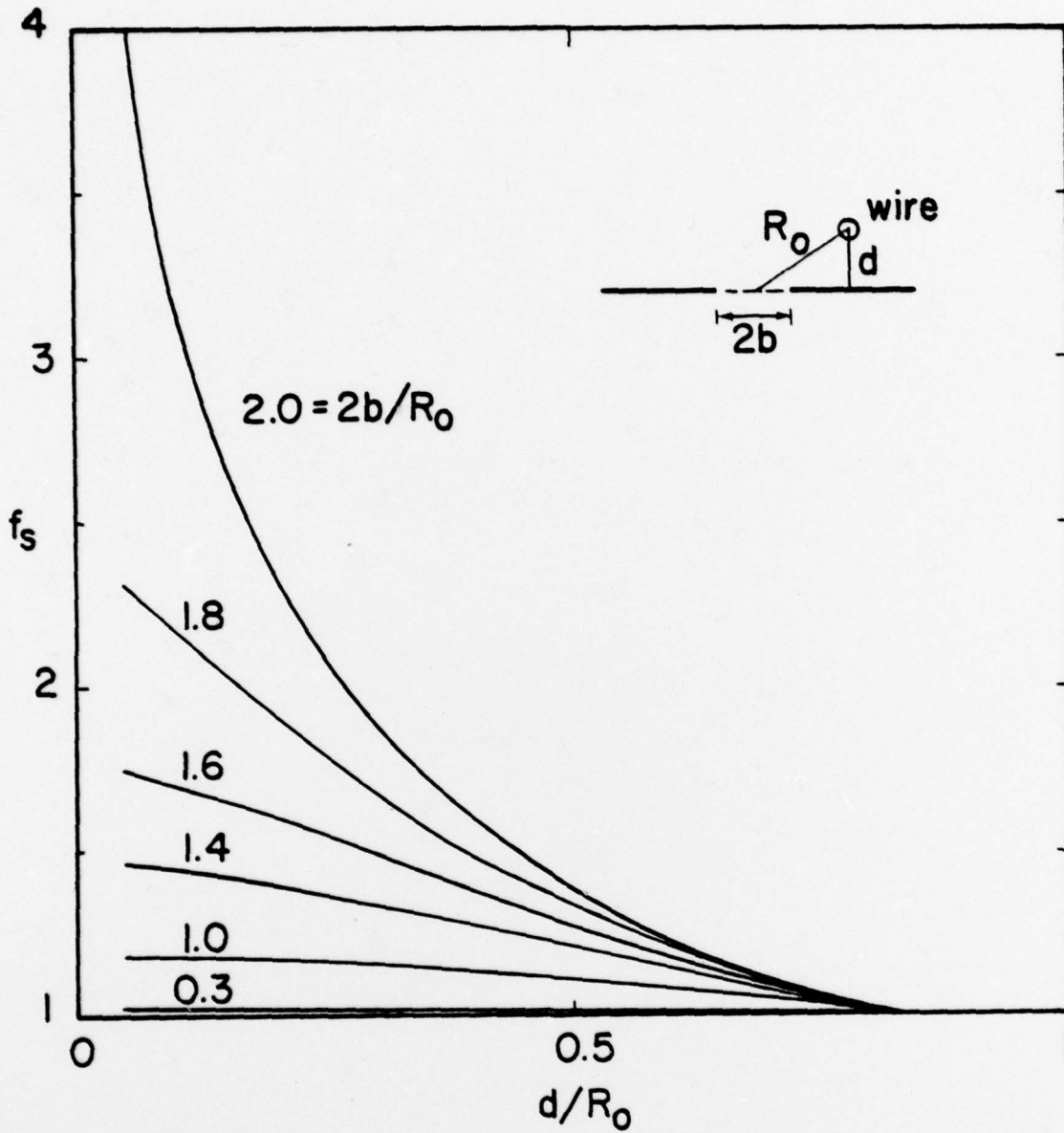


Figure 5. Effect of the distance of the wire from the hole and/or ground plane on the source factor f_s , where f_s is defined in Figure 4.

APPENDIX A

In this appendix expressions for calculating the electric and magnetic fields generated by the current on the wire (Fig. 2) will be derived.

We first assume the aperture tangential \underline{E} field to be a delta function, that is, $\hat{y} \times \underline{E} = \hat{t} \delta(x-x') \delta(z-z')$, \hat{t} being a unit vector. The result will then be used to obtain the solution for a general aperture field distribution. Let the wire current δI induced by this delta-function aperture source be

$$\delta \underline{I} = \hat{z} \frac{1}{2\pi} \int_{-\infty}^{\infty} \delta \tilde{I}(h) e^{ihz} dh$$

where $\delta \tilde{I}(h) = \int_{-\infty}^{\infty} \delta I(z) e^{-ihz} dz$ is the Fourier transform of $\delta I(z)$.

At the surface of the wire, the z-component of the electric field δE_z^W produced by the wire current and its image is

$$\delta E_z^W = - \frac{1}{8\pi\omega\epsilon} \int_{-\infty}^{\infty} \delta \tilde{I}(h) \zeta^2 [H_0^{(1)}(2\zeta d) - H_0^{(1)}(\zeta a)] e^{ihz} dh \quad (A-1)$$

with $\zeta^2 = k^2 - h^2$.

The electric field $\delta \underline{E}^a$ due to a delta-function aperture field $\hat{y} \times \underline{E} = \hat{t} \delta(x-x') \delta(z-z')$ is simply

$$\begin{aligned} \delta \underline{E}^a &= 2\nabla \times \hat{t} G(x, y, z; x', 0, z') \\ &= \frac{i}{4\pi} \nabla \times \left\{ \hat{t} \int_{-\infty}^{\infty} H_0^{(1)}[\zeta \sqrt{(x-x')^2 + y^2}] e^{ih(z-z')} dh \right\} \end{aligned}$$

where the unit vector $\hat{t} = \hat{x} t_x + \hat{z} t_z$. Then the electric field δE_z^a on the surface of the wire is

$$\delta E_z^a = -\frac{i}{4\pi} \frac{dt_x}{R'} \int_{-\infty}^{\infty} \zeta H_0^{(1)'}(\zeta R') e^{ih(z-z')} dh \quad (A-2)$$

with $R'^2 = (w+x')^2 + d^2$. From the requirement that the total tangential electric field vanishes on the surface of the wire, one has from (A-1) and (A-2)

$$\delta \tilde{I}(h) = i\omega \epsilon \frac{2dt_x}{R'} \frac{H_0^{(1)'}(\zeta R') e^{-ihz'}}{\zeta [H_0^{(1)}(2\zeta d) - H_0^{(1)}(\zeta a)]} \quad (A-3)$$

Since the magnetic field in free space from a wire current $\delta \tilde{I}(h)$ is given by the formula

$$\delta \underline{H}^W = -\frac{i}{8\pi} \hat{\phi} \int_{-\infty}^{\infty} \zeta \delta \tilde{I}(h) H_0^{(1)'}(\zeta \rho) e^{ihz} dh$$

with $\rho^2 = (x+w)^2 + (y-d)^2$, the total tangential magnetic field arising from this current and its image at $y = 0+$ is

$$\begin{aligned} \delta H_x^W(x, 0+, z) &= -\frac{i}{4\pi} \frac{d}{R} \int_{-\infty}^{\infty} \delta \tilde{I}(h) \zeta H_0^{(1)'}(\zeta R) e^{ihz} dh \\ &= \frac{\omega \epsilon}{2\pi} \frac{d^2}{RR'} t_x \int_{-\infty}^{\infty} \frac{H_0^{(1)'}(\zeta R') H_0^{(1)'}(\zeta R)}{H_0^{(1)}(2\zeta d) - H_0^{(1)}(\zeta a)} e^{ih(z-z')} dh \end{aligned}$$

where $R = \sqrt{(x+w)^2 + d^2}$. The total tangential magnetic field at $y = 0+$ due to the wire current from a general distribution of $\hat{y} \times \underline{E}$ in the aperture is found by superposition and the result is

$$H_x^w(x, 0+, z) = \frac{\omega \epsilon}{2\pi} \frac{d}{R} \iint_A \frac{d}{R'} E_z(x', z') \int_{-\infty}^{\infty} \frac{H_0^{(1)'}(\zeta R') H_0^{(1)'}(\zeta R)}{H_0^{(1)}(2\zeta d) - H_0^{(1)}(\zeta a)} e^{ih(z-z')} dh dx' dz' \quad (A-4)$$

Similarly, the normal electric field at $y = 0+$ arising from the wire current is given by

$$E_y^w(x, 0+, z) = -\frac{1}{2\pi} \frac{d}{R} \iint_A \frac{d}{R'} E_z(x', z') \int_{-\infty}^{\infty} h \frac{H_0^{(1)'}(\zeta R') H_0^{(1)'}(\zeta R)}{H_0^{(1)}(2\zeta d) - H_0^{(1)}(\zeta a)} e^{ih(z-z')} dh dx' dz' \quad (A-5)$$

APPENDIX B

The exact integral equations for the tangential electric field in an aperture lying in an infinite perfectly conducting plane are given by equations (2) and (4) with the right-hand sides set equal to zero, viz.,

$$(\nabla_t \nabla_t + k^2 \underline{I}) \cdot \int_A G(\underline{r}_t - \underline{r}'_t) \hat{y} \times \underline{E}(\underline{r}'_t) dS' = \pm \frac{i\omega\mu}{4} \underline{H}_{sc} \quad (B-1)$$

$$\hat{y} \cdot \nabla_t \times \int_A G(\underline{r}_t - \underline{r}'_t) \hat{y} \times \underline{E}(\underline{r}'_t) dS' = \pm \frac{1}{4} \hat{y} \cdot \underline{E}_{sc} \quad (B-2)$$

where \underline{r}_t and \underline{r}'_t are position vectors lying in the plane of the aperture. If terms higher than ω are neglected, equation (B-1) reduces to

$$\nabla_t \int_A \frac{1}{|\underline{r}_t - \underline{r}'_t|} \nabla'_t \cdot (\hat{y} \times \underline{E}) dS' = \pm i\omega\mu\pi \underline{H}_{sc} \quad (B-3)$$

which is equivalent to equation (3) in the text. If one introduces the magnetic scalar potential ψ via

$$\underline{H} = -\nabla\psi, \quad \underline{H}_{sc} = -\nabla\psi_0$$

$$\nabla_t \cdot (\hat{y} \times \underline{E}) = -i\omega\mu H_y = i\omega\mu \frac{\partial\psi}{\partial y}$$

into (B-3) one obtains

$$\int_A \frac{1}{|\underline{r}_t - \underline{r}'_t|} \frac{\partial\psi}{\partial y'} dS' = \pm \pi\psi_0 \quad (B-4)$$

which is the familiar integral equation for planar apertures in magnetostatics.

If one takes the static limit of (B-2) one obtains

$$\nabla_t \cdot \int_A \frac{\underline{E}_t(\underline{r}'_t)}{|\underline{r}_t - \underline{r}'_t|} dS' = \pm \pi \hat{y} \cdot \underline{E}_{sc} \quad (\underline{E}_t = \underline{E} - \hat{y} E_y) \quad (B-5)$$

With $\underline{E}_t = -\nabla_t \varphi$, equation (B-5) gives

$$\nabla_t^2 \int_A \frac{\varphi(\underline{r}'_t)}{|\underline{r}_t - \underline{r}'_t|} dS' = \mp \pi \hat{y} \cdot \underline{E}_{sc} \quad (B-6)$$

which is the familiar integro-differential equation for planar apertures in electrostatics.

REFERENCES

- [1] K.S.H. Lee and C.E. Baum, "Application of modal analysis to braided-shield cables," EMP Interaction Notes, Note 132, Air Force Weapons Laboratory, Kirtland AFB, N.M., January 1973. Also see IEEE Trans. Electromagn. Compat., vol. EMC-17, No. 3, August 1975, pp. 159 -169.
- [2] R.W. Latham, "Small holes in cable shields," Interaction Notes, Note 118, Air Force Weapons Laboratory, Kirtland AFB, N.M., September 1972, and "An approach to certain cable shielding calculations," Interaction Notes, Note 90, Air Force Weapons Laboratory, Kirtland AFB, N.M., January 1972.
- [3] C.D. Taylor and C.W. Harrison, Jr., "On the excitation of a coaxial line through a small aperture in the outer sheath," Interaction Notes, Note 104, Air Force Weapons Laboratory, Kirtland AFB, N.M., January 1972. Also, see IEEE Trans. Electromagn. Compat., vol. EMC-15, August 1973, pp. 127 - 131.
- [4] D.C. Chang, "A general theory on small, radiating apertures in the outer sheath of a coaxial cable," Scientific Report No. 19, U.S. Office of Naval Research, Arlington, Va., July 1976.
- [5] E.F. Vance, "Shielding effectiveness of braided wire shields," IEEE Trans. Electromagn. Compat., vol. EMC-17, May 1975, pp. 71 - 77. Also, see EMP Interaction Notes, Note 172, Air Force Weapons Laboratory, Kirtland AFB, N.M., April 1974.
- [6] D. Kajfez, "Excitation of a terminated TEM transmission line through a small aperture," AFWL-TR-74-195, Air Force Weapons Laboratory, Kirtland AFB, N.M., August 1975. Also see, EMP Interaction Notes, Note 215, Air Force Weapons Laboratory, Kirtland AFB, N.M., July 1974.
- [7] C.J. Bouwkamp, "Diffraction Theory," Rep. Progr. Phys., vol. 17, 1954, pp. 35 - 100.
- [8] J. van Bladal, Electromagnetic Fields, McGraw-Hill, New York, N.Y., 1964, p. 320.