

AD-A060 955

NAVAL RESEARCH LAB WASHINGTON D C
NONLINEAR STABILIZATION OF THE EXB GRADIENT DRIFT INSTABILITY I--ETC(U)
OCT 78 P K CHATURVEDI, S L OSSAKOW

F/G 4/1

UNCLASSIFIED

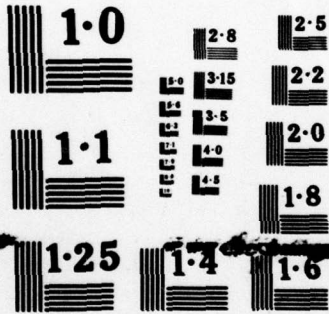
NRL-MR-3837

NL

1 OF 1
ADA
060955



END
DATE
FILMED
-79
DDC



NATIONAL BUREAU OF STANDARDS
MICROCOPY RESOLUTION TEST CHART

LEVEL II

12
b.s.

NRL Memorandum Report 3837

ADA060955

Nonlinear Stabilization of the EXB Gradient Drift Instability in Ionospheric Plasma Clouds

P.K. Chaturvedi

*University of Maryland
College Park, Maryland 20742*

and

S.L. Ossakow

*Geophysical and Plasma Dynamics Branch
Plasma Physics Division*

DDC
NOV 9 1978
F

DDC FILE COPY

October 27, 1978

This research was sponsored partially by the Office of Naval Research and partially by the Defense Nuclear Agency under Subtask S99QAXHC041, work unit 12 and work unit title Ionization Structured Research.



NAVAL RESEARCH LABORATORY
Washington, D.C.

Approved for public release; distribution unlimited

78 11 06 121

62704H

SECURITY CLASSIFICATION OF THIS PAGE (When Data Entered)

REPORT DOCUMENTATION PAGE		READ INSTRUCTIONS BEFORE COMPLETING FORM	
1. REPORT NUMBER NRL Memorandum Report 3837	2. GOVT ACCESSION NO.	RECIPIENT'S CATALOG NUMBER	
4. TITLE (and Subtitle) NONLINEAR STABILIZATION OF THE EXB GRADIENT DRIFT INSTABILITY IN IONOSPHERIC PLASMA CLOUDS.		5. TYPE OF REPORT & PERIOD COVERED Interim report on a continuing NRL problem	
7. AUTHOR(s) P. K. Chaturvedi and S. L. Ossakow		6. PERFORMING ORG. REPORT NUMBER	
9. PERFORMING ORGANIZATION NAME AND ADDRESS Naval Research Laboratory Washington, D.C. 20375		8. CONTRACT OR GRANT NUMBER(s)	
11. CONTROLLING OFFICE NAME AND ADDRESS Defense Nuclear Agency, Washington, D.C. 20305 and Office of Naval Research, Arlington, Virginia 22217		10. PROGRAM ELEMENT, PROJECT, TASK AREA & WORK UNIT NUMBERS NRL Problems H02-27B & A03-16B DNA Subtask S99QAXHC041, No.12	
14. MONITORING AGENCY NAME & ADDRESS (if different from Controlling Office) 37p.		12. REPORT DATE October 1978	
		13. NUMBER OF PAGES 37	
		15. SECURITY CLASS. (of this report) UNCLASSIFIED	
16. DISTRIBUTION STATEMENT (of this Report) Approved for public release; distribution unlimited.		17. DISTRIBUTION STATEMENT (of the abstract entered in Block 20, if different from Report)	
18. SUPPLEMENTARY NOTES *University of Maryland, College Park, Maryland 20742. This research was sponsored partially by ONR and partially by DNA under subtask S99QAXHC041, work unit 12 and work unit title, Ionization Structured Research.			
19. KEY WORDS (Continue on reverse side if necessary and identify by block number) Gradient drift instability Nonlinear stabilization F region plasma clouds Power spectrum Experimental comparison			
20. ABSTRACT (Continue on reverse side if necessary and identify by block number) We present a two-dimensional nonlinear stabilization mechanism for the EXB instability occurring in striated F region ionospheric plasma clouds. A simple model shows that the saturated power spectrum for striations $\propto k^{-2}$. Comparisons with experimental data from DNA sponsored STRESS barium cloud experiments and the results of numerical simulations are given. proportional to $1/k$ -squared			

DD FORM 1 JAN 73 1473

EDITION OF 1 NOV 65 IS OBSOLETE
S/N 0102-014-6601

SECURITY CLASSIFICATION OF THIS PAGE (When Data Entered)

251950
78 11 06 1217B

NONLINEAR STABILIZATION OF THE EXB GRADIENT DRIFT INSTABILITY IN IONOSPHERIC PLASMA CLOUDS

The artificial injection of ion clouds in the ionosphere has been used as a technique to study various ambient conditions in the medium; e.g., the mapping of electric fields based upon their bulk motion in the medium (Haerendel and Lust, 1968). These clouds are found to display a typical pattern of development soon after their release. As they EXB drift in the crossed ambient electric and magnetic fields, they steepen on the backside (with respect to this motion), elongate and then striate on the steepened backside (Rosenberg, 1971). These striations are highly field-aligned and assume the shape of protruding fingers in their late time history, extending from the backside to the frontside. The motion of the ion cloud has been studied in detail by Haerendel et al. (1967). The steepening aspect has been explained by Perkins et al. (1973). The striations which result from the steepening have been generally attributed to the EXB gradient drift instability (Linson and Workman, 1970; Völk and Haerendel, 1971) originally applied by Simon (1963) to laboratory gas discharges. The numerical simulation studies performed by various groups to simulate the interaction of the plasma cloud and the ionosphere have agreed with the dynamics of the observed gross motion of the cloud and the development of fine structure on its steepened backside (Zabusky et al., 1973; Lloyd and Haerendel; 1973, Goldman et al., 1974; Scannapieco et al., 1976; Doles et al., 1976). In the work of Scannapieco et al. (1976), it was found that the striations, due to EXB instability obeyed a power law for the Fourier wavenumbers going as $\sim k^{-2}$. The experimental observations and numerical simulation studies indicate towards a coherent

development of these striations in their nonlinear state (fingers, etc.). The recent DNA sponsored STRESS barium cloud experiments have provided data that agrees with the above interpretation and numerical simulation results. (Kelley et al., 1978; Baker and Ulwick, 1978).

In the present paper, we wish to present a theory for the coherent nonlinear development of the EXB instability in plasma clouds. In this theory the instability generates linearly damped harmonics through nonlinear interaction and stabilizes. In fact, it has been shown sometime back that the so-called cross-field instability in the equatorial E region electrojet evolves nonlinearly through this stabilization mechanism (Rognlien and Weinstock, 1974). The difference in the EXB instability in the electrojet and in the clouds released at high F region altitudes is that in the electrojet region the differential motion between the Hall-drifting electrons and collisional non-magnetized ions results in the instability while in the high altitude case the difference arises through the large Pedersen mobility of ions as compared to that of electrons. Likewise, a gravity can also provide a differential motion between the species by providing ions a relative motion over electrons and would result in the collisional Rayleigh-Taylor instability which can be saturated by similar effects (Chaturvedi and Ossakow, 1977). The similarity between the EXB gradient drift instability in ionospheric plasma clouds and the collisional Rayleigh-Taylor instability in equatorial Spread F was noted in the numerical simulation work (Scannapieco and Ossakow, 1976; Scannapieco et al., 1976) and in the experimental observations (Kelley et al., 1978).

The nonlinear set of equations describing the physical interaction of a plasma cloud in the ionosphere has been discussed many times in the past (Volk and Haerendel, 1971; Perkins et al., 1973; Scannapieco et al., 1976). We shall consider the simple case of a one dimensional plasma cloud. We further consider a local region on the steepened side of the cloud and study what happens to the nonlinear evolution of the perturbations, linearly unstable in this region due to the EXB instability. It should be pointed out here that this approach puts some restrictions on the validity of the results vis-a-vis real situations. First, a two-dimensional cloud of finite extent is not stationary and is continuously getting distorted as it moves in the ionosphere. However, on the faster time scale on which the striations grow, an assumption of one dimensionality gives us a quasi-stationary solution for the cloud. Second, we ignore the interaction of the cloud with the background ionosphere (the second level) which is a good enough assumption for the large clouds (one level model). In our geometry the earth's magnetic field, \underline{B}_0 , is in the z-direction and the electric field is pointing along the x-axis. The steepening of the cloud in this configuration is such that for the backside the gradient is negative, and on the frontside it is positive (along the y-direction). The coupled set of nonlinear equations can be written as (see Perkins et al., 1973)

$$\frac{\partial n}{\partial t} - \frac{c}{B_0} \nabla_{\perp} n \cdot \nabla_{\perp} \phi \hat{x} \hat{e}_z - \frac{2cT}{eB_0 \kappa_{en}} \nabla_{\perp}^2 n = 0 \quad (1)$$

and

$$\nabla_{\perp} \cdot (n \nabla_{\perp} \phi) + \frac{2T}{e} \nabla_{\perp}^2 n = 0 \quad (2)$$

where $\kappa_{\alpha n} = \Omega_{\alpha} / \nu_{\alpha n}$, $\Omega_{\alpha} = |e_{\alpha}| B_0 / m_{\alpha} c$, \perp denotes perpendicular to B_0 , and $\hat{e}_z = B_0 / |B_0|$. Here eqn. (1) is the ion continuity equation in which the second term represents the effects due to EXB convection of plasma along a density gradient and the last term represents the ambipolar diffusion damping. (Here we have not taken into account the electron-ion Coulomb collisions which restrict the applicability of the results to lower F region altitudes.) The perturbations are assumed electrostatic and the generalized potential $\bar{\phi}$ is given by

$$\bar{\phi} = \phi - \frac{T}{e} \frac{1-\Delta}{1+\Delta} \ln\left(\frac{n}{n_0}\right) \quad (3)$$

where T is the temperature (in energy units) of the species (equal for ions and electrons), n_0 is a representative equilibrium plasma density and Δ is a small quantity: $\Delta = \frac{\kappa_{in}}{\kappa_{en}} = \frac{m_e \nu_{en}}{m_i \nu_{in}} \ll 1$. The electrostatic potential ϕ includes an ambient part ϕ_0 and the perturbed part $\tilde{\phi}$:

$$\phi = \phi_0 + \tilde{\phi}, \text{ so}$$

$$\nabla_{\perp} \phi = - \underline{E}_0 + \nabla_{\perp} \tilde{\phi}$$

Equation (2), a statement of quasi-neutrality, $\nabla_{\perp} \cdot \underline{J}_{\perp} = 0$, is obtained by subtracting the ion continuity equation from the electron one, and resembles the Poisson's equations. If written in terms of undisturbed and perturbed quantities, one can rewrite eqn. (1) and (2) as

$$\frac{\partial \tilde{n}}{\partial t} - \frac{c}{B_0} \nabla_{\perp} \tilde{\phi} \times \hat{e}_z \cdot \nabla_{\perp} n_0 - \frac{2cT}{eB_0 \kappa_{en}} \nabla_{\perp}^2 n = \frac{c}{B_0} \nabla_{\perp} \tilde{\phi} \times \hat{e}_z \cdot \nabla_{\perp} \tilde{n} \quad (4)$$

and

$$\nabla_{\perp} \cdot (n \nabla_{\perp} \tilde{\phi}) + \frac{T}{e} \nabla_{\perp}^2 n = \underline{E}_0 \cdot \nabla_{\perp} n \quad (5)$$

where we have transformed to a frame moving with $cE_0 x B_0 / B_0^2$ velocity. In equation (4), the second term gives the linear growth of perturbations and the third one represents diffusion damping. The term on the right hand side is a nonlinear term representing a nonlinear flux of particles through mode-interactions. Similarly in the potential equation (5), the left hand term has a linear and a nonlinear term. The linear term simply gives the perturbed potential, as it arises due to the differential mobilities between ion and electrons across a density perturbation (due to finite Pedersen effects on ions) in an ambient electric field, E_0 . The second term would be a nonlinear term. For one-dimensional perturbations, it is the dominant nonlinearity. In this case, the important nonlinear effect is the shielding of the driving electric field. It should be remembered here that the eqn. (5) is a lowest order equation in $\left(\frac{v_{in}}{\Omega_i}\right)$ and thus these quantities do not appear explicitly in the equation. A comparison between the two nonlinear terms in equations (4) and (5), readily shows that the term in (5) would be down by $\left(\frac{v_{in}}{\Omega_i}\right)$ as compared to the term in eqn. (4). This is of course valid only for two-dimensional perturbations, since for one dimensional perturbations, the term in equation (4) is negligibly small. But the problem is clearly inherently two-dimensional, and thus we adopt this approach here. (For more discussion on this point, see Rognlien and Weinstock, 1974; Chaturvedi and Ossakow, 1977.) If one linearizes eqn. (4) and (5) and Fourier analyses the perturbations as $\sim \exp(i\mathbf{k} \cdot \mathbf{x} - i\omega t)$ one obtains a familiar growth of perturbations at a rate given by

COPIES FOR	Write Section <input type="checkbox"/>	Buff Section <input type="checkbox"/>
TIS		
OC		
UNANNOUNCED		
JUSTIFICATION		
BY	DISTRIBUTION/AVAILABILITY CODES	
	D. 1 / SPECIAL	
	A	

$$\gamma = \frac{cE_0}{B_0} \frac{k_x^2}{k_\perp^2} - \frac{v_{en}}{\Omega_e \Omega_i} c_s^2 k_\perp^2 \quad (6)$$

where $L = \frac{n_0}{(dn/dy)}$ and $c_s^2 = 2T/m_i$

One can therefore rewrite eqns. (4) and (5) as

$$\frac{\partial \tilde{n}}{\partial t} = \gamma \tilde{n} + \frac{c}{B_0} \nabla_\perp \tilde{\phi} \times \hat{e}_z \cdot \nabla_\perp \tilde{n} \quad (4a)$$

and

$$n_0 \nabla_\perp^2 \tilde{\phi} = \underline{E}_0 \cdot \nabla_\perp n - \frac{T}{e} \nabla_\perp^2 n \quad (5a)$$

Obviously, eqn. (5a) has been written in its linearized form.* If one substitutes a two-dimensional perturbation in the nonlinear term of (4a), of the form: $\frac{\tilde{n}}{n_0} = A_{1,1} \sin(k_x x - \omega t) \cos k_y y$; one sees that the result is $\sim \left[\frac{cE_0}{2B_0} \frac{k_x^2}{k_\perp^2} k_y A_{1,1}^2 \right] \sin 2k_y y$. That is, a second spatial harmonic in the y -direction (along the density gradient) is generated. We represent it as: $A_{2,0} \sin 2k_y y$. Thus our general perturbation has the form

$$\frac{\tilde{n}}{n_0} = A_{1,1} \sin(k_x x - \omega t) \cos k_y y + A_{2,0} \sin 2k_y y \quad (7)$$

From (5a), the associated potential perturbation is

$$\tilde{\phi} = i \beta \frac{\tilde{n}}{n_0}, \quad \beta = \frac{k_x E_0}{k_\perp^2} \quad (8)$$

A substitution of (7) and (8) in (4a) leads to the coupled equations in mode amplitudes:

$$\frac{\partial A_{1,1}}{\partial t} = \gamma_{1,1} A_{1,1} - \alpha A_{1,1} A_{2,0} \quad (9)$$

*For long wavelengths, of the order of hundreds of meters, the second term on right can be neglected. For $E_0 = 10\text{mV/m}$, $T = 10^3 \text{ }^\circ\text{K}$, this term assumes importance at wavelengths of the order of tens of meters. In any case the term would cause a shift in the real part of ω .

and

$$\frac{\partial A_{2,0}}{\partial t} = \gamma_{2,0} A_{2,0} + \frac{\alpha}{2} A_{1,1}^2 \quad (10)$$

With the coupling coefficient given by $\alpha = \frac{k_x^2 k_y}{k_\perp^2} \frac{cE_0}{B_0}$. If the mode $A_{2,0}$ is damped linearly, then $\gamma_{2,0}$ would be negative. Thus the nonlinear interactions cascade energy from the end where it is initially input (the linearly growing mode) to the k-space where linear theory predicts stability. This introduces a nonlinear damping for the linearly driven modes (see eqn. (9)), and one can think of a stationary state when the linear growth is balanced by the nonlinear damping. In this situation $\partial A_{1,1}/\partial t = \partial A_{2,0}/\partial t = 0$ and one obtains

$$A_{2,0} = \frac{|\gamma_{1,1}|}{\alpha} = \frac{1}{k_y |L|} \quad (11)$$

and

$$A_{1,1} = \left(+ \frac{2|\gamma_{2,0}|}{\alpha} A_{2,0} \right)^{\frac{1}{2}} = \frac{(2|\gamma_{1,1}||\gamma_{2,0}|)^{\frac{1}{2}}}{\alpha} \quad (12)$$

Note that if $|\gamma_{1,1}| > |\gamma_{2,0}|$, one obtains that $A_{2,0} > A_{1,1}$. This means that if the spatial harmonics along the density gradient are relatively weakly damped, they are nonlinearly driven to larger amplitudes compared to the linearly driven modes. Further, these spatial harmonics

can be thought to be quasi-linearly modifying the equilibrium density gradient and thus stabilizing the instability. Note that the saturated amplitude of the $A_{2,0}$ mode obtained here is of the same form as that obtained in the case of the collisional Rayleigh-Taylor instability (Chaturvedi and Ossakow, 1977). This indicates a close similarity between the driving effects for the collisional Rayleigh-Taylor instability in the equatorial F region and the EXB instability in F region Ba clouds. The numerical simulation of the nonlinear phase of the two instabilities also shows similar characteristics (Scannapieco and Ossakow, 1976) which is not surprising noting the similar form of the two coupled equations in the two cases. Experimental data of Kelley et al. (1978) also agrees with this interpretation. Substitution of typical numbers into (11) shows that for wavenumbers such that for $k_y L \sim 8$

$$A_{2,0} \approx 12\% \quad (13)$$

We note here that the experimental observations by Kelley et al. (1978) and Baker and Ulwick (1978) are in line with the above estimate. Also, the recent one level numerical calculations give a saturation amplitude of this order [B. E. McDonald 1978, private communication.]

Further, it may be noted that the nonlinear generation of harmonics with large amplitudes increases the harmonic content in the final density profile and would steepen it (as has been found in the numerical calculations of Rognlien and Weinstock (1974) for their

many-mode case) and the power law for the mode numbers goes as $\sim k^{-2}$ (eqn. (11)). This is also in agreement with the numerical simulations of Scannapieco et al. (1976) and the experimental results of Kelley et al. (1978). Similar observations of k^{-2} spectra for coherent equatorial F region irregularities (Dyson et al., 1974) can also be interpreted in terms of a similar nonlinear theory (Chaturvedi and Ossakow, 1977). Finally, we remark that the next related problem to investigate would involve a two-level case (see Scannapieco et al., 1976), in which image striations in the background ionosphere and the associated nonlinear effects are taken into account.

Acknowledgement

One of us (Pradeep K. Chaturvedi) would like to acknowledge a useful discussion with Dr. T. D. Rognlien. This work was supported by the Defense Nuclear Agency and the Office of Naval Research.

References

- Baker, K. D., and J. C. Ulwick, Measurements of electron density structure in barium clouds, Geophys. Res. Lett., 5, 723, 1978.
- Chaturvedi, P. K. and S. L. Ossakow, Nonlinear theory of the collisional Rayleigh-Taylor instability in equatorial Spread F, Geophys. Res. Lett., 4, 558, 1977.
- Doles, J. H. III, N. J. Zabusky, and F. W. Perkins, Deformation and striation of plasma clouds in the ionosphere 3. Numerical simulations of a multilevel model with recombination chemistry, J. Geophys. Res., 81, 5987, 1976.
- Dyson, P. L., J. P. McClure and W. B. Hanson, In situ measurements of the spectral characteristics of F region ionospheric irregularities, J. Geophys. Res., 79, 1497, 1974.
- Goldman, S. R., S. L. Ossakow and D. L. Book, On the nonlinear motion of a small barium cloud in the ionosphere, J. Geophys. Res., 79, 1471, 1974.
- Haerendel, G., R. Lust, and E. Rieger, Motion of artificial ion clouds in the upper atmosphere, Planet. Space Science, 15, 1, 1967.
- Haerendel, G. and R. Lust, Artificial plasma clouds in space, Sci. Amer., 219, No. 5, 80, 1968.
- Kelley, M., K. D. Baker and J. C. Ulwick, Late time barium cloud striations and their possible relationship to equatorial Spread

- F, J. Geophys. Res., in press, 1978.
- Linson, L. M. and J. B. Workman, Formation of striations in ionospheric plasma clouds, J. Geophys. Res., 75, 3211, 1970.
- Lloyd, K. H. and G. Haerendel, Numerical modeling of the drift and deformation of ionospheric plasma clouds and of their interaction with other layers of the ionosphere, J. Geophys. Res., 78, 7389, 1973.
- Perkins, F. W., N. J. Zabusky, and J. H. Doles III, Deformation and striation of plasma clouds in the ionosphere, 1, J. Geophys. Res., 78, 697, 1973.
- Rognlien, T. D. and J. Weinstock, Theory of the nonlinear spectrum of the gradient drift instability in the equatorial electrojet, J. Geophys. Res., 79, 4733, 1974.
- Rosenberg, N. W., Observations of striation formation in a barium ion cloud, J. Geophys. Res., 76, 6856, 1971.
- Scannapieco, A. J. and S. L. Ossakow, Nonlinear equatorial Spread F Geophys. Res. Lett., 3, 451, 1976.
- Scannapieco, A. J., S. L. Ossakow, S. R. Goldman and J. M. Pierre, Plasma cloud late time striation spectra, J. Geophys. Res., 81, 6037, 1976.
- Simon, A., Instability of a partially ionized plasma in crossed electric and magnetic fields, Phys. Fluids, 6, 382, 1963.
- Vilks, H. J. and G. Haerendel, Striations in ionospheric ion clouds, 1, J. Geophys. Res., 76, 4541, 1971.
- Zabusky, N. J., J. H. Doles III, and F. W. Perkins, Deformation and

striation of plasma clouds in the ionosphere 2. Numerical

simulation of a nonlinear two-dimensional model, J. Geophys.

Res., 78, 711, 1973.

DISTRIBUTION LIST

DEPARTMENT OF DEFENSE

ASSISTANT SECRETARY OF DEFENSE
COMM, CMD, CONT & INTELL
WASHINGTON, D.C. 20301
01CY ATTN J. BABCOCK
01CY ATTN M. EPSTEIN

ASSISTANT TO THE SECRETARY OF DEFENSE
ATOMIC ENERGY
WASHINGTON, D.C. 20301
01CY ATTN EXECUTIVE ASSISTANT

DIRECTOR
COMMAND CONTROL TECHNICAL CENTER
PENTAGON RM BE 685
WASHINGTON, D.C. 20301
01CY ATTN C-650
01CY ATTN C-312 R. MASON

DIRECTOR
DEFENSE ADVANCED RSCH PROJ AGENCY
ARCHITECT BUILDING
1400 WILSON BLVD.
ARLINGTON, VA. 22209
01CY ATTN NUCLEAR MONITORING RESEARCH
01CY ATTN STRATEGIC TECH OFFICE

DEFENSE COMMUNICATION ENGINEER CENTER
1860 WIEHLE AVENUE
RESTON, VA. 22090
01CY ATTN CODE R820
01CY ATTN CODE R410 JAMES W. MCLEAN
01CY ATTN CODE R720 J. WORTHINGTON

DIRECTOR
DEFENSE COMMUNICATIONS AGENCY
WASHINGTON, D.C. 20305
(ADR CNWDI: ATTN CODE 240 FOR)
01CY ATTN CODE 480
01CY ATTN CODE 810 R. W. ROSTRON
01CY ATTN CODE 101B
01CY ATTN CODE 103 M. RAFFENSPERGER

DEFENSE DOCUMENTATION CENTER
CAMERON STATION
ALEXANDRIA, VA. 22314
(12 COPIES IF OPEN PUBLICATION, OTHERWISE 2 COPIES)
12CY ATTN TC

DIRECTOR
DEFENSE INTELLIGENCE AGENCY
WASHINGTON, D.C. 20301
01CY ATTN DT-1B
01CY ATTN DB-4C E. O'FARRELL
01CY ATTN DIAAP A. WISE
01CY ATTN DIAST-5
01CY ATTN DT-1BZ R. MORTON
01CY ATTN HQ-TR J. STEWART
01CY ATTN W. WITTIG DC-7D

DIRECTOR
DEFENSE NUCLEAR AGENCY
WASHINGTON, D.C. 20305
01CY ATTN STVL
04CY ATTN TITL
01CY ATTN DDST
03CY ATTN RAAE

COMMANDER
FIELD COMMAND
DEFENSE NUCLEAR AGENCY
KIRTLAND AFB, NM 87115
01CY ATTN FCPR

DIRECTOR
INTERSERVICE NUCLEAR WEAPONS SCHOOL
KIRTLAND AFB, NM 87115
01CY ATTN DOCUMENT CONTROL

JOINT CHIEFS OF STAFF
WASHINGTON, D.C. 20301
01CY ATTN J-3 WWMCCS EVALUATION OFFICE

DIRECTOR
JOINT STRAT TGT PLANNING STAFF
OFFUTT AFB
OMAHA, NB 68113
01CY ATTN JLTW-2
01CY ATTN JPST G. GOETZ

CHIEF
LIVERMORE DIVISION FLD COMMAND DNA
DEPARTMENT OF DEFENSE
LAWRENCE LIVERMORE LABORATORY
P. O. BOX 808
LIVERMORE, CA 94550
01CY ATTN FCPR

DIRECTOR
NATIONAL SECURITY AGENCY
DEPARTMENT OF DEFENSE
FT. GEORGE G. MEADE, MD 20755
01CY ATTN JOHN SKILLMAN R52
01CY ATTN FRANK LEONARD
01CY ATTN W14 PAT CLARK
01CY ATTN OLIVER H. BARTLETT W32
01CY ATTN R5

COMMANDANT
NATO SCHOOL (SHAPE)
APO NEW YORK 09172
01CY ATTN U.S. DOCUMENTS OFFICER

UNDER SECY OF DEF FOR RSCH & ENGRG
DEPARTMENT OF DEFENSE
WASHINGTON, D.C. 20301
01CY ATTN STRATEGIC & SPACE SYSTEMS (OS)

WMCCS SYSTEM ENGINEERING ORG
WASHINGTON, D.C. 20305
01CY ATTN R. CRAWFORD

COMMANDER/DIRECTOR
ATMOSPHERIC SCIENCES LABORATORY
U.S. ARMY ELECTRONICS COMMAND
WHITE SANDS MISSILE RANGE, NM 88002
01CY ATTN DELAS-EO F. NILES

DIRECTOR
BMD ADVANCED TECH CTR
HUNTSVILLE OFFICE
P. O. BOX 1500
HUNTSVILLE, AL 35807
01CY ATTN ATC-T MELVIN T. CAPPS
01CY ATTN ATC-O W. DAVIES
01CY ATTN ATC-R DON RUSS

PROGRAM MANAGER
BMD PROGRAM OFFICE
5001 EISENHOWER AVENUE
ALEXANDRIA, VA 22333
01CY ATTN DACS-BMT J. SHEA

CHIEF C-E SERVICES DIVISION
U.S. ARMY COMMUNICATIONS CMD
PENTAGON RM 1B269
WASHINGTON, D.C. 20310
01CY ATTN C-E-SERVICES DIVISION

COMMANDER
FRADCOM TECHNICAL SUPPORT ACTIVITY
DEPARTMENT OF THE ARMY
FORT MONMOUTH, N.J. 07793

01CY ATTN DRSEL-NL-RD H. BENNET
01CY ATTN DRSEL-PL-ENV H. BOMKE
01CY ATTN J. E. QUIGLEY

COMMANDER
HARRY DIAMOND LABORATORIES
DEPARTMENT OF THE ARMY
2800 POWDER MILL ROAD
ADELPHI, MD 20783

(CNWDI-INNER ENVELOPE: ATTN: DELHD-RBH)

01CY ATTN DELHD-TI M. WEINER
01CY ATTN DELHD-RB R. WILLIAMS
01CY ATTN DELHD-NP F. WIMENITZ
01CY ATTN DELHD-NP C. MOAZED

COMMANDER
U.S. ARMY COMM-ELEC ENGRG INSTAL AGY
FT. HUACHUCA, AZ 85613

01CY ATTN CCC-EMEO GEORGE LANE

COMMANDER
U.S. ARMY FOREIGN SCIENCE & TECH CTR
220 7TH STREET, NE
CHARLOTTESVILLE, VA 22901

01CY ATTN DRXST-SD
01CY ATTN R. JONES

COMMANDER
U.S. ARMY MATERIEL DEV & READINESS CMD
5001 EISENHOWER AVENUE
ALEXANDRIA, VA 22333

01CY ATTN DRCLDC J. A. BENDER

COMMANDER
U.S. ARMY NUCLEAR AND CHEMICAL AGENCY
7500 BACKLICK ROAD
BLDG 2073
SPRINGFIELD, VA 22150
01CY ATTN LIBRARY

DIRECTOR
U.S. ARMY BALLISTIC RESEARCH LABS
ABERDEEN PROVING GROUND, MD 21005
01CY ATTN TECH LIB EDWARD BAICY

COMMANDER
U.S. ARMY SATCOM AGENCY
FT. MONMOUTH, NJ 07703
01CY ATTN DOCUMENT CONTROL

COMMANDER
U.S. ARMY MISSILE INTELLIGENCE AGENCY
REDSTONE ARSENAL, AL 35809
01CY ATTN JIM GAMBLE

DIRECTOR
U.S. ARMY TRADOC SYSTEMS ANALYSIS ACTIVITY
WHITE SANDS MISSILE RANGE, NM 88002
01CY ATTN ATAA-SA
01CY ATTN TCC/F. PAYAN JR.
01CY ATTN ATAA-TAC LTC J. HESSE

COMMANDER
NAVAL ELECTRONIC SYSTEMS COMMAND
WASHINGTON, D.C. 20360
01CY ATTN NAVALEX 034 T. HUGHES
01CY ATTN PME 117
01CY ATTN PME 117-T
01CY ATTN CODE 5011

COMMANDING OFFICER
NAVAL INTELLIGENCE SUPPORT CTR
4301 SUITLAND ROAD, BLDG. 5
WASHINGTON, D.C. 20390
01CY ATTN MR. DUBBIN STIC 12
01CY ATTN NISC-50
01CY ATTN CODE 5404 J. GALET

COMMANDER
NAVAL ELECTRONIC SYSTEMS CENTER
SAN DIEGO, CA 92161
01CY ATTN CODE 532 W. GIBBS
01CY ATTN CODE 033 E. BURGESS
01CY ATTN CODE 81 R. EASTMAN

DIRECTOR
NAVAL RESEARCH LABORATORY
WASHINGTON, D.C. 20375
01CY ATTN CODE 8788
01CY ATTN CODE 8781
01CY ATTN CODE 8782
01CY ATTN CODE 8783
01CY ATTN CODE 8784
01CY ATTN CODE 8785
01CY ATTN CODE 8786
01CY ATTN CODE 8787
01CY ATTN CODE 8789

01CY ATTN CODE 8790
01CY ATTN CODE 8791
01CY ATTN CODE 8792
01CY ATTN CODE 8793
01CY ATTN CODE 8794
01CY ATTN CODE 8795
01CY ATTN CODE 8796
01CY ATTN CODE 8797
01CY ATTN CODE 8798
01CY ATTN CODE 8799

COMMANDER
NAVAL SEA SYSTEMS COMMAND
WASHINGTON, D.C. 20382
01CY ATTN CAPT R. PHEON

COMMANDER
NAVAL SPACE SURVEILLANCE SYSTEM
DAMEN, VA 22908
01CY ATTN CAPT J. H. BURTON

OFFICER-IN-CHARGE
NAVAL SURFACE WEAPONS CENTER
WHITE OAK, SILVER SPRING, MD 20910
01CY ATTN CODE 931

DIRECTOR
STRATEGIC SYSTEMS PROJECT OFFICE
DEPARTMENT OF THE NAVY
WASHINGTON, D.C. 20338
01CY ATTN HSP-2191
01CY ATTN HSP-2192
01CY ATTN HSP-2193
01CY ATTN HSP-2194
01CY ATTN HSP-2195
01CY ATTN HSP-2196
01CY ATTN HSP-2197
01CY ATTN HSP-2198
01CY ATTN HSP-2199

NAVAL SPACE SYSTEM ACTIVITY
B.O. BOX 9198
FLOYD POSTAL CENTER
LOS ANGELES, CALIF. 90009
01CY ATTN A. B. HAZARD

COMMANDER
NAVAL OCEAN SYSTEMS CENTER
SAN DIEGO, CA 92152
03CY ATTN CODE 532 W. MOLER
01CY ATTN CODE 0230 C. BAGGETT
01CY ATTN CODE 81 R. EASTMAN

DIRECTOR
NAVAL RESEARCH LABORATORY
WASHINGTON, D.C. 20375
01CY ATTN CODE 6700 TIMOTHY P. COFFEY (25 CYS IF UNCLASS, 1 CY IF CLASS)
01CY ATTN CODE 6701 JACK D. BROWN
01CY ATTN CODE 6780 BRANCH HEAD (150 CYS IF UNCLASS, 1 CY IF CLASS)
01CY ATTN CODE 7500 HQ COMM DIR BRUCE WALD
01CY ATTN CODE 7550 J. DAVIS
01CY ATTN CODE 7580
01CY ATTN CODE 7551
01CY ATTN CODE 7555
01CY ATTN CODE 6730 E. MCLEAN
01CY ATTN CODE 7127 C. JOHNSON

COMMANDER
NAVAL SEA SYSTEMS COMMAND
WASHINGTON, D.C. 20362
01CY ATTN CAPT R. PITKIN

COMMANDER
NAVAL SPACE SURVEILLANCE SYSTEM
DAHLGREN, VA 22448
01CY ATTN CAPT J. H. BURTON

OFFICER-IN-CHARGE
NAVAL SURFACE WEAPONS CENTER
WHITE OAK, SILVER SPRING, MD 20910
01CY ATTN CODE F31

DIRECTOR
STRATEGIC SYSTEMS PROJECT OFFICE
DEPARTMENT OF THE NAVY
WASHINGTON, D.C. 20376
01CY ATTN NSP-2141
01CY ATTN NSSP-2722 FRED WIMBERLY

NAVAL SPACE SYSTEM ACTIVITY
P. O. BOX 92960
WORLDWAY POSTAL CENTER
LOS ANGELES, CALIF. 90009
01CY ATTN A. B. HAZZARD

COMMANDER
NAVAL SURFACE WEAPONS CENTER
DAHLGREN LABORATORY
DAHLGREN, VA 22448
01CY ATTN CODE DF-14 R. BUTLER

COMMANDING OFFICER
NAVY SPACE SYSTEMS ACTIVITY
P.O. BOX 92960
WORLDWAY POSTAL CENTER
LOS ANGELES, CA. 90009
01CY ATTN CODE 52

OFFICE OF NAVAL RESEARCH
ARLINGTON, VA 22217
01CY ATTN CODE 465
01CY ATTN CODE 461
01CY ATTN CODE 402
01CY ATTN CODE 420
01CY ATTN CODE 421

COMMANDER
AEROSPACE DEFENSE COMMAND/DC
DEPARTMENT OF THE AIR FORCE
ENT AFB, CO 80912
01CY ATTN DC MR. LONG

COMMANDER
AEROSPACE DEFENSE COMMAND/XPD
DEPARTMENT OF THE AIR FORCE
ENT AFB, CO 80912
01CY ATTN XPDQQ
01CY ATTN XP

AIR FORCE GEOPHYSICS LABORATORY
HANSCOM AFB, MA 01731
01CY ATTN OPR HAROLD GARDNER
01CY ATTN OPR-1 JAMES C. ULWICK
01CY ATTN LKB KENNETH S. W. CHAMPION
01CY ATTN OPR ALVA T. STAIR
01CY ATTN PHP JULES AARONS
01CY ATTN PHD JURGEN BUCHAU
01CY ATTN PHD JOHN P. MULLEN

AF WEAPONS LABORATORY
KIRTLAND AFB, NM 87117
01CY ATTN SUL
01CY ATTN CA ARTHUR H. GUENTHER
01CY ATTN DYC CAPT J. BARRY
01CY ATTN DYC JOHN M. KAMM
01CY ATTN DYT CAPT MARK A. FRY
01CY ATTN DES MAJ GARY GANONG
01CY ATTN DYC J. JANNI

AFTAC
PATRICK AFB, FL 32925
01CY ATTN TF/MAJ WILEY
01CY ATTN TN

AIR FORCE AVIONICS LABORATORY
WRIGHT-PATTERSON AFB, OH 45433
01CY ATTN AAD WADE HUNT
01CY ATTN AAD ALLEN JOHNSON

DEPUTY CHIEF OF STAFF
RESEARCH, DEVELOPMENT, & ACQ
DEPARTMENT OF THE AIR FORCE
WASHINGTON, D.C. 20330
01CY ATTN AFRDQ

HEADQUARTERS
ELECTRONIC SYSTEMS DIVISION/XR
DEPARTMENT OF THE AIR FORCE
HANSCOM AFB, MA 01731
01CY ATTN XR J. DEAS

HEADQUARTERS
ELECTRONIC SYSTEMS DIVISION/YSEA
DEPARTMENT OF THE AIR FORCE
HANSCOM AFB, MA 01731
01CY ATTN YSEA

HEADQUARTERS
ELECTRONIC SYSTEMS DIVISION/DC
DEPARTMENT OF THE AIR FORCE
HANSCOM AFB, MA 01731
01CY ATTN DCKC MAJ J. C. CLARK

HEADQUARTERS
ELECTRONIC SYSTEMS DIVISION, AFSC
HANSCOM AFB, MA 01731
01CY ATTN XRW
01CY ATTN JAMES WHELAN

COMMANDER
FOREIGN TECHNOLOGY DIVISION, AFSC
WRIGHT-PATTERSON AFB, OH 45433
01CY ATTN NICD LIBRARY
01CY ATTN ETDP B. BALLARD

COMMANDER
ROME AIR DEVELOPMENT CENTER, AFSC
GRIFFISS AFB, NY 13441
01CY ATTN DOC LIBRARY/TSLD
01CY ATTN OCSE V. COYNE

SAMSO/SZ
POST OFFICE BOX 92960
WORLDWAY POSTAL CENTER
LOS ANGELES, CA 90009
(SPACE DEFENSE SYSTEMS)
01CY ATTN SZJ

STRATEGIC AIR COMMAND/XPFS

OFFUTT AFB, NB 68113

01CY ATTN XPFS MAJ B. STEPHAN

01CY ATTN ADWATE MAJ BRUCE BAUER

01CY ATTN NRT

01CY ATTN DOK CHIEF SCIENTIST

SAMSO/YA

P. O. BOX 92960

WORLDWAY POSTAL CENTER

LOS ANGELES, CA 90009

01CY ATTN YAT CAPT L. BLACKWELDER

SAMSO/SK

P. O. BOX 92960

WORLDWAY POSTAL CENTER

LOS ANGELES, CA 90009

01CY ATTN SKA (SPACE COMM SYSTEMS) M. CLAVIN

SAMSO/MN

NORTON AFB, CA 92409

(MINUTEMAN)

01CY ATTN MNL LTC KENNEDY

COMMANDER

ROME AIR DEVELOPMENT CENTER, AFSC

HANSCOM AFB, MA 01731

01CY ATTN EEP A. LORENTZEN

DEPARTMENT OF ENERGY

DEPARTMENT OF ENERGY
ALBUQUERQUE OPERATIONS OFFICE
P. O. BOX 5400
ALBUQUERQUE, NM 87115
01CY ATTN DOC CON FOR D. SHERWOOD

DEPARTMENT OF ENERGY
LIBRARY ROOM G-042
WASHINGTON, D.C. 20545
01CY ATTN DOC CON FOR A. LABOWITZ

EG&G, INC.
LOS ALAMOS DIVISION
P. O. BOX 809
LOS ALAMOS, NM 85544
01CY ATTN DOC CON FOR J. BREEDLOVE

UNIVERSITY OF CALIFORNIA
LAWRENCE LIVERMORE LABORATORY
P. O. BOX 808
LIVERMORE, CA 94550
01CY ATTN DOC CON FOR TECH INFO DEPT
01CY ATTN DOC CON FOR L-389 R. OTT
01CY ATTN DOC CON FOR L-31 R. HAGER
01CY ATTN DOC CON FOR L-46 F. SEWARD

LOS ALAMOS SCIENTIFIC LABORATORY
P. O. BOX 1663
LOS ALAMOS, NM 87545
01CY ATTN DOC CON FOR J. WOLCOTT
01CY ATTN DOC CON FOR R. F. TASCHEK
01CY ATTN DOC CON FOR E. JONES
01CY ATTN DOC CON FOR J. MALIK
01CY ATTN DOC CON FOR R. JEFFRIES
01CY ATTN DOC CON FOR J. ZINN
01CY ATTN DOC CON FOR P. KEATON
01CY ATTN DOC CON FOR D. WESTERVELT

SANDIA LABORATORIES
P. O. BOX 5800
ALBUQUERQUE, NM 87115
01CY ATTN DOC CON FOR J. MARTIN
01CY ATTN DOC CON FOR W. BROWN
01CY ATTN DOC CON FOR A. THORNBROUGH
01CY ATTN DOC CON FOR T. WRIGHT
01CY ATTN DOC CON FOR D. DAHLGREN
01CY ATTN DOC CON FOR 3141
01CY ATTN DOC CON FOR SPACE PROJECT DIV

SANDIA LABORATORIES
LIVERMORE LABORATORY
P. O. BOX 969
LIVERMORE, CA 94550

01CY ATTN DOC CON FOR B. MURPHEY
01CY ATTN DOC CON FOR T. COOK

OFFICE OF MILITARY APPLICATION
DEPARTMENT OF ENERGY

WASHINGTON, D.C. 20545

01CY ATTN DOC CON FOR D. GALE

OTHER GOVERNMENT

CENTRAL INTELLIGENCE AGENCY
ATTN: ROOM 3048, 4000
WASHINGTON, D.C. 20505
01CY ATTN DESKTOP RM 2F 19

DEPARTMENT OF COMMERCE
NATIONAL BUREAU OF STANDARDS
WASHINGTON, D.C. 20538
(CALL CORRECT ATTN SEC OFFICER FOR)
01CY ATTN R. MOORE

DEPARTMENT OF TRANSPORTATION
OFFICE OF THE SECRETARY
TAG-MAIL ROOM 10A02-B
400 7TH STREET, S.W.
WASHINGTON, D.C. 20590
01CY ATTN R. LEWIS
01CY ATTN R. COBBITT

INSTITUTE FOR SYSTEM SCIENCES
NATIONAL TELECOMMUNICATIONS & INFO ADMIN
Boulder, CO 80502
01CY ATTN A. JEAN (UNCLASS ONLY)
01CY ATTN W. DUBAUT
01CY ATTN D. CROSBIE
01CY ATTN L. BERRY

NATIONAL OCEANIC & ATMOSPHERIC ADMIN
ENVIRONMENTAL RESEARCH LABORATORIES
DEPARTMENT OF COMMERCE
BOULDER, CO 80502
01CY ATTN R. BRUSH
01CY ATTN AERONAUT LAB 6-1010

NASA
GODDARD SPACE FLIGHT CENTER
GREENBELT, MD 20771
01CY ATTN P. CORRIHAN

OTHER GOVERNMENT

CENTRAL INTELLIGENCE AGENCY
ATTN RD/SI, RM 5G48, HQ BLDG
WASHINGTON, D.C. 20505
01CY ATTN OSI/PSID RM 5F 19

DEPARTMENT OF COMMERCE
NATIONAL BUREAU OF STANDARDS
WASHINGTON, D.C. 20234
(ALL CORRES: ATTN SEC OFFICER FOR)
01CY ATTN R. MOORE

DEPARTMENT OF TRANSPORTATION
OFFICE OF THE SECRETARY
TAD-44.1, ROOM 10402-B
400 7TH STREET, S.W.
WASHINGTON, D.C. 20590
01CY ATTN R. LEWIS
01CY ATTN R. DOHERTY

INSTITUTE FOR TELECOM SCIENCES
NATIONAL TELECOMMUNICATIONS & INFO ADMIN
BOULDER, CO 80303
01CY ATTN A. JEAN (UNCLASS ONLY)
01CY ATTN W. UTLAUT
01CY ATTN D. CROMBIE
01CY ATTN L. BERRY

NATIONAL OCEANIC & ATMOSPHERIC ADMIN
ENVIRONMENTAL RESEARCH LABORATORIES
DEPARTMENT OF COMMERCE
BOULDER, CO 80302
01CY ATTN R. GRUBB
01CY ATTN AERONOMY LAB G. REID

NASA
GODDARD SPACE FLIGHT CENTER
GREENBELT, MD 20771
01CY ATTN P. CORRIGAN

DEPARTMENT OF DEFENSE CONTRACTORS

AEROSPACE CORPORATION

P. O. BOX 92957

LOS ANGELES, CA 90009

01CY ATTN I. GARFUNKEL

01CY ATTN T. SALMI

01CY ATTN V. JOSEPHSON

01CY ATTN S. BOWER

01CY ATTN N. STOCKWELL

01CY ATTN D. OLSEN

01CY ATTN J. CARTER

01CY ATTN F. MORSE

01CY ATTN SMFA FOR PWV

ANALYTICAL SYSTEMS ENGINEERING CORP

5 OLD CONCORD ROAD

BURLINGTON, MA 01803

01CY ATTN RADIO SCIENCES

BERKELEY RESEARCH ASSOCIATES, INC.

P. O. BOX 983

BERKELEY, CA 94701

01CY ATTN J. WORKMAN

BOEING COMPANY, THE

P. O. BOX 3707

SEATTLE, WA 98124

01CY ATTN G. KEISTER

01CY ATTN D. MURRAY

01CY ATTN G. HALL

01CY ATTN J. KENNEY

CALIFORNIA AT SAN DIEGO, UNIV OF
IPAPS, B-019

LA JOLLA, CA 92093

01CY ATTN HENRY G. BOOKER

BROWN ENGINEERING COMPANY, INC.

CUMMINGS RESEARCH PARK

HUNTSVILLE, AL 35807

01CY ATTN ROMEO A. DELIBERIS

CHARLES STARK DRAPER LABORATORY, INC.

555 TECHNOLOGY SQUARE

CAMBRIDGE, MA 02139

01CY ATTN D. B. COX

01CY ATTN J. P. GILMORE

COMPUTER SCIENCES CORPORATION

6565 ARLINGTON BLVD

FALLS CHURCH, VA 22046

01CY ATTN H. BLANK

01CY ATTN JOHN SPOOR

01CY ATTN C. NAIL

COMSAT LABORATORIES
LINTHICUM ROAD
CLARKSBURG, MD 20734
01CY ATTN G. HYDE

CORNELL UNIVERSITY
DEPARTMENT OF ELECTRICAL ENGINEERING
ITHACA, NY 14850
01CY ATTN D. T. FARLEY JR

ELECTROSPACE SYSTEMS, INC.
BOX 1359
RICHARDSON, TX 75080
01CY ATTN H. LOGSTON
01CY ATTN SECURITY (PAUL PHILLIPS)

ESL INC.
495 JAVA DRIVE
SUNNYVALE, CA 94086
01CY ATTN J. ROBERTS
01CY ATTN JAMES MARSHALL
01CY ATTN C. W. PRETTIE

FORD AEROSPACE & COMMUNICATIONS CORP
3939 FABIAN WAY
PALO ALTO, CA 94303
01CY ATTN J. T. MATTINGLEY

GENERAL ELECTRIC COMPANY
SPACE DIVISION
VALLEY FORGE SPACE CENTER
GODDARD BLVD KING OF PRUSSIA
P. O. BOX 8555
PHILADELPHIA, PA 19101
01CY ATTN M. H. BORTNER SPACE SCI LAB

GENERAL ELECTRIC COMPANY
P. O. BOX 1122
SYRACUSE, NY 13201
01CY ATTN F. REIBERT

GENERAL ELECTRIC COMPANY
TEMPO-CENTER FOR ADVANCED STUDIES
816 STATE STREET (P.O. DRAWER QQ)
SANTA BARBARA, CA 93102
01CY ATTN DASIAC
01CY ATTN DON CHANDLER
01CY ATTN TOM BARRETT
01CY ATTN TIM STEPHANS
01CY ATTN WARREN S. KNAPP
01CY ATTN WILLIAM MCNAMARA
01CY ATTN B. GAMBILL
01CY ATTN MACK STANTON

GENERAL ELECTRIC TECH SERVICES CO., INC.
HMES
COURT STREET
SYRACUSE, NY 13201
01CY ATTN G. MILLMAN

GENERAL RESEARCH CORPORATION
SANTA BARBARA DIVISION
P. O. BOX 6770
SANTA BARBARA, CA 93111
01CY ATTN JOHN ISE JR
01CY ATTN JOEL GARBARINO

GEOPHYSICAL INSTITUTE
UNIVERSITY OF ALASKA
FAIRBANKS, AK 99701
(CALL CLASS ATTN: SECURITY OFFICER)
01CY ATTN T. N. DAVIS (UNCL ONLY)
01CY ATTN NEAL BROWN (UNCL ONLY)
01CY ATTN TECHNICAL LIBRARY

GTE SYLVANIA, INC.
ELECTRONICS SYSTEMS GRP-EASTERN DIV
77 A STREET
NEEDHAM, MA 02194
01CY ATTN MARSHAL CROSS

ILLINOIS, UNIVERSITY OF
DEPARTMENT OF ELECTRICAL ENGINEERING
URBANA, IL 61803
01CY ATTN K. YEH

ILLINOIS, UNIVERSITY OF
107 COBLE HALL
801 S. WRIGHT STREET
URBANA, IL 60680
(CALL CORRES ATTN SECURITY SUPERVISOR FOR)
01CY ATTN K. YEH

INSTITUTE FOR DEFENSE ANALYSES
400 ARMY-NAVY DRIVE
ARLINGTON, VA 22202
01CY ATTN J. M. AEIN
01CY ATTN ERNEST BAUER
01CY ATTN HANS WOLFHARD
01CY ATTN JOEL BENGSTON

HSS, INC.
2 ALFRED CIRCLE
BEDFORD, MA 01730
01CY ATTN DONALD HANSEN

INTL TEL & TELEGRAPH CORPORATION
500 WASHINGTON AVENUE
NUTLEY, NJ 07110
01CY ATTN TECHNICAL LIBRARY

JAYCOR
1401 CAMINO DEL MAR
DEL MAR, CA 92014
01CY ATTN S. R. GOLDMAN

JOHNS HOPKINS UNIVERSITY
APPLIED PHYSICS LABORATORY
JOHNS HOPKINS ROAD
LAUREL, MD 20810

01CY ATTN DOCUMENT LIBRARIAN
01CY ATTN THOMAS POTEIRA
01CY ATTN JOHN DASSOULAS

LOCKHEED MISSILES & SPACE CO INC
P. O. BOX 504
SUNNYVALE, CA 94088
01CY ATTN DEPT 60-12
01CY ATTN D. R. CHURCHILL

LOCKHEED MISSILES AND SPACE CO INC
3251 HANOVER STREET
PALO ALTO, CA 94304
01CY ATTN MARTIN WALT DEPT 52-10
01CY ATTN RICHARD G. JOHNSON DEPT 52-12
01CY ATTN W. L. IMHOF DEPT 52-12

KAMAN SCIENCES CORP
P. O. BOX 7463
COLORADO SPRINGS, CO 80933
01CY ATTN T. MEAGHER

LINKABIT CORP
10453 ROSELLE
SAN DIEGO, CA 92121
01CY ATTN IRWIN JACOBS

LOWELL RSCH FOUNDATION, UNIVERSITY OF
450 AIKEN STREET
LOWELL, MA 01854
01CY ATTN K. BIBL

M.I.T. LINCOLN LABORATORY
P. O. BOX 73
LEXINGTON, MA 02173
01CY ATTN DAVID M. TOWLE
01CY ATTN P. WALDRON
01CY ATTN L. LOUGHLIN
01CY ATTN D. CLARK

MARTIN MARIETTA CORP
ORLANDO DIVISION
P. O. BOX 5837
ORLANDO, FL 32805
01CY ATTN R. HEFFNER

MCDONNELL DOUGLAS CORPORATION
5301 BOLSA AVENUE
HUNTINGTON BEACH, CA 92647
01CY ATTN N. HARRIS
01CY ATTN J. MOULE
01CY ATTN GEORGE MROZ
01CY ATTN W. OLSON
01CY ATTN R. W. HALPRIN
01CY ATTN TECHNICAL LIBRARY SERVICES

GENERAL RESEARCH CORPORATION
SANTA BARBARA DIVISION
P. O. BOX 5770
SANTA BARBARA, CA 93111
01CY ATTN JOHN LEE JR.
01CY ATTN JOEL GARRARD

GEOPHYSICAL INSTITUTE
UNIVERSITY OF ALASKA
FAIRBANKS, AK 99701
01CY ATTN T. N. DAVIS (UNCL. ONLY)
01CY ATTN NEAL BROWN (UNCL. ONLY)
01CY ATTN TECHNICAL LIBRARY

STE SYLVANIA, INC.
ELECTRONICS SYSTEMS GROUP
17 A STREET
MECHANIC, PA 02104
01CY ATTN MARSHAL CROSS

ILLINOIS UNIVERSITY OF
DEPARTMENT OF ELECTRICAL ENGINEERING
URBANA, IL 61803
01CY ATTN K. YEH

ILLINOIS UNIVERSITY OF
107 COBLE HALL
801 S. WRIGHT STREET
URBANA, IL 60880
01CY ATTN SUPERVISOR FOR
01CY ATTN K. YEH

INSTITUTE FOR DEFENSE ANALYSIS
400 ARMY-NAVY DRIVE
ARLINGTON, VA 22203
01CY ATTN DR. M. AELSH
01CY ATTN ERNEST BAUER
01CY ATTN HANS WOLFRAND
01CY ATTN JOEL GARRARD

H&S, INC.
2 ALFRED CIRCLE
BEDFORD, MA 02109
01CY ATTN DONALD HANSEN

INTEL TEL & TELEGRAPH CORPORATION
500 WASHINGTON AVENUE
MURLEY, NJ 07030
01CY ATTN TECHNICAL LIBRARY

BAYCOR
1401 CAMINO DEL MAR
DUBLIN, CA 94568
01CY ATTN B. R. GORRIN

R & D ASSOCIATES

P. O. BOX 9695

MARINA DEL REY, CA 90291

01CY ATTN FORREST GILMORE

01CY ATTN BRYAN GABBARD

01CY ATTN WILLIAM B. WRIGHT JR

01CY ATTN ROBERT F. LELEVIER

01CY ATTN WILLIAM J. KARZAS

01CY ATTN H. ORY

01CY ATTN C. MACDONALD

01CY ATTN R. TURCO

RAND CORPORATION, THE

1700 MAIN STREET

SANTA MONICA, CA 90406

01CY ATTN CULLEN CRAIN

01CY ATTN ED BEDROZIAN

RIVERSIDE RESEARCH INSTITUTE

80 WEST END AVENUE

NEW YORK, NY 10023

01CY ATTN VINCE TRAPANI

SCIENCE APPLICATIONS, INC.

P. O. BOX 2351

LA JOLLA, CA 92038

01CY ATTN LEWIS M. LINSON

01CY ATTN DANIEL A. HAMLIN

01CY ATTN D. SACHS

01CY ATTN E. A. STRAKER

01CY ATTN CURTIS A. SMITH

01CY ATTN JACK MCDUGALL

RAYTHEON CO.

528 BOSTON POST ROAD

SUDBURY, MA 01776

01CY ATTN BARBARA ADAMS

SCIENCE APPLICATIONS, INC.

HUNTSVILLE DIVISION

2109 W. CLINTON AVENUE

SUITE 700

HUNTSVILLE, AL 35805

01CY ATTN DALE H. DIVIS

SCIENCE APPLICATIONS, INCORPORATED

8400 WESTPARK DRIVE

MCLEAN, VA 22101

01CY ATTN J. COCKAYNE

SCIENCE APPLICATIONS, INC.

80 MISSION DRIVE

PLEASANTON, CA 94566

01CY ATTN SZ

MIRRE CORP
WESTGATE RESEARCH PARK
1810 DOLLY HARTSON BLVD
MOUNTAIN VIEW, VA 22071
01CY ATTN W. HALL
01CY ATTN W. FOSTER
PACIFIC-SIERRA RESEARCH CORP
1455 CLOVERFIELD BLVD
SANTA MONICA, CA 90404
01CY ATTN E. J. FLEISCH JR
PENNSYLVANIA STATE UNIVERSITY
PHYSICS RESEARCH LAB
THE ENGINEERING EAST
UNIVERSITY PARK, PA 16802
NOT CLASSIFIED IN THIS ADDRESS
01CY ATTN THOMPSON RESEARCH LAB
PHOTONICS, INC.
1415 MARKET ROAD
LEXINGTON, MA 02137
01CY ATTN IRVING L. KERSKY
PHYSICAL DYNAMICS, INC.
P. O. BOX 3037
BOSTON, MA 02109
01CY ATTN E. L. THOMAS
PHYSICAL DYNAMICS, INC.
P. O. BOX 3037
BOSTON, MA 02109
01CY ATTN E. L. THOMAS

SRI INTERNATIONAL
333 RAVENSWOOD AVENUE
MENLO PARK, CA 94025

01CY ATTN DONALD NEILSON
01CY ATTN ALAN BURNS
01CY ATTN G. SMITH
01CY ATTN L. L. COBB
01CY ATTN DAVID A. JOHNSON
01CY ATTN WALTER G. CHESNUT
01CY ATTN CHARLES L. RINO
01CY ATTN WALTER JAYE
01CY ATTN M. BARON
01CY ATTN RAY L. LEADABRAND
01CY ATTN G. CARPENTER
01CY ATTN G. PRICE
01CY ATTN J. PETERSON
01CY ATTN R. HAKE, JR.
01CY ATTN V. GONZALES
01CY ATTN D. MCDANIEL

TECHNOLOGY INTERNATIONAL CORP
75 WIGGINS AVENUE
BEDFORD, MA 01730

01CY ATTN W. P. BOQUIST

TRW DEFENSE & SPACE SYS GROUP
ONE SPACE PARK
REDONDO BEACH, CA 90278

01CY ATTN R. K. PLEBUCH
01CY ATTN S. ALTSCHULER
01CY ATTN D. DEE

VISIDYNE, INC.
19 THIRD AVENUE
NORTH WEST INDUSTRIAL PARK
BURLINGTON, MA 01803

01CY ATTN CHARLES HUMPHREY
01CY ATTN J. W. CARPENTER

IONOSPHERIC MODELING DISTRIBUTION LIST
UNCLASSIFIED ONLY

PLEASE DISTRIBUTE ONE COPY TO EACH OF THE FOLLOWING PEOPLE:

ADVANCED RESEARCH PROJECTS AGENCY (ARPA)
STRATEGIC TECHNOLOGY OFFICE
ARLINGTON, VIRGINIA

CAPT. DONALD M. LEVINE

NAVAL RESEARCH LABORATORY
WASHINGTON, D.C. 20375

DR. P. MANGE
DR. R. MEIER
DR. E. SZUSZCZEWICZ - CODE 7127
DR. TIMOTHY COFFEY - CODE 6700
DR. S. OSSAKOW - CODE 6780
DR. J. GOODMAN - CODE 7560

SCIENCE APPLICATIONS, INC.
1250 PROSPECT PLAZA
LA JOLLA, CALIFORNIA 92037

DR. D. A. HAMLIN
DR. L. LINSON
DR. D. SACHS

DIRECTOR OF SPACE AND ENVIRONMENTAL LABORATORY
NOAA
BOULDER, COLORADO 80302

DR. A. GLENN JEAN
DR. G. W. ADAMS
DR. D. N. ANDERSON
DR. K. DAVIES
DR. R. F. DONNELLY

A. F. GEOPHYSICS LABORATORY
L. G. HANSON FIELD
BEDFORD, MASS. 01730

DR. T. ELKINS
DR. W. SWIDER
MRS. R. SAGALYN
DR. J. M. FORBES
DR. T. J. KENESHEA
DR. J. AARONS

OFFICE OF NAVAL RESEARCH
800 NORTH QUINCY STREET
ARLINGTON, VIRGINIA 22217

DR. H. MULLANEY

COMMANDER
NAVAL ELECTRONICS LABORATORY CENTER
SAN DIEGO, CALIFORNIA 92152

DR. M. BLEIWEISS
DR. I. ROTHMULLER
DR. V. HILDEBRAND
MR. R. ROSE

U. S. ARMY ABERDEEN RESEARCH AND DEVELOPMENT CENTER
BALLISTIC RESEARCH LABORATORY
ABERDEEN, MARYLAND

DR. J. HEIMERL

COMMANDER
NAVAL AIR SYSTEMS COMMAND
DEPARTMENT OF THE NAVY
WASHINGTON, D.C. 20360

DR. T. CZUBA

HARVARD UNIVERSITY
HARVARD SQUARE
CAMBRIDGE, MASS. 02138

DR. M. B. MCELROY
DR. R. LINDZEN

PENNSYLVANIA STATE UNIVERSITY
UNIVERSITY PARK, PENNSYLVANIA 16802

DR. J. S. NISBET
DR. P. R. ROHRBAUGH
DR. D. E. BARAN
DR. L. A. CARPENTER
DR. M. LEE
DR. R. DIVANY
DR. P. BENNETT
DR. E. KLEVANS

UNIVERSITY OF CALIFORNIA, LOS ANGELES
405 HILLGARD AVENUE
LOS ANGELES, CALIFORNIA 90024

DR. F. V. CORONITI
DR. C. KENNEL

UNIVERSITY OF CALIFORNIA, BERKELEY
BERKELEY, CALIFORNIA 94720

DR. M. HUDSON

UTAH STATE UNIVERSITY
4TH N. AND 8TH STREETS
LOGAN, UTAH 84322

DR. P. M. BANKS
DR. R. HARRIS
DR. V. PETERSON
DR. R. MEGILL
DR. K. BAKER

CORNELL UNIVERSITY
ITHACA, NEW YORK 14850

DR. W. E. SWARTZ
DR. R. SUDAN
DR. D. FARLEY
DR. M. KELLEY
DR. E. OTT

NASA
GODDARD SPACE FLIGHT CENTER
GREENBELT, MARYLAND 20771

DR. S. CHANDRA
DR. K. MAEDO

PRINCETON UNIVERSITY
PLASMA PHYSICS LABORATORY
PRINCETON, NEW JERSEY 08540

DR. F. PERKINS
DR. E. FRIEMAN

INSTITUTE FOR DEFENSE ANALYSIS
400 ARMY/NAVY DRIVE
ARLINGTON, VIRGINIA 22202

DR. E. BAUER

UNIVERSITY OF PITTSBURGH
PITTSBURGH, PA. 15213

DR. N. ZABUSKY
DR. M. BIONDI