

AD-A062 387

SOUTHWEST RESEARCH INST SAN ANTONIO TX ARMY FUELS AN--ETC F/G 21/7
DIRECT UTILIZATION OF CRUDE OIL AS FUEL IN U.S. ARMY FOUR-CYCLE--ETC(U)
AUG 78 J V MOFFITT, E A FRAME

UNCLASSIFIED

AFLRL-108

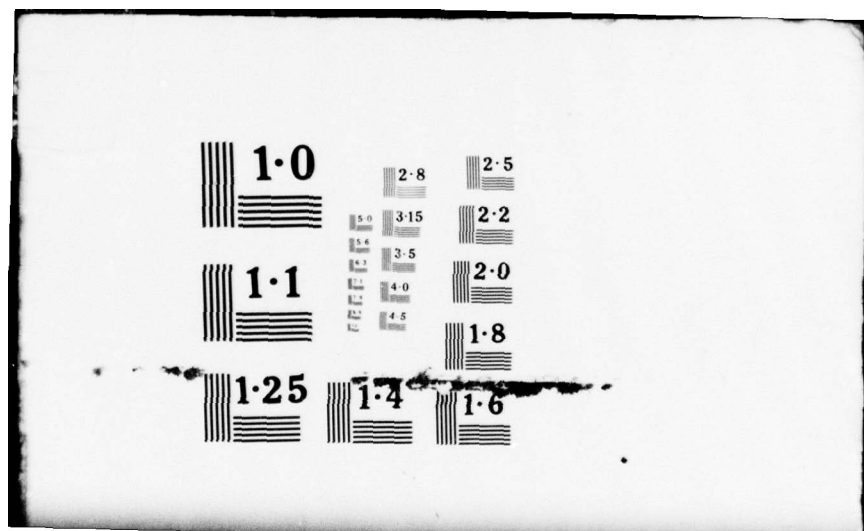
DAAG53-76-C-0003

NL

1 OF 1
ADA
062387



END
DATE
FILMED
3 -79
DDC



1.0

2.8

2.5

5.0

3.15

2.2

1.1

5.6

3.5

2.0

4.0

4.5

1.8

1.25

1.4

1.6

12

AD

AD A 0 6 2 3 8 7

DIRECT UTILIZATION OF CRUDE OIL AS FUEL IN U.S. ARMY FOUR-CYCLE DIESEL ENGINE MODEL LDT-465-1C

LEVEL

INTERIM REPORT
AFLRL No. 108

by
John V. Moffitt
and
Edwin A. Frame

DDC
DEC 19 1978
F

DDC FILE COPY

prepared by
U.S. Army Fuels and Lubricants Research Laboratory
Southwest Research Institute
San Antonio, Texas

under contract to
U.S. Army Mobility Equipment Research
and Development Command
Fort Belvoir, Virginia

Approved for public release; distribution unlimited

Contract No. DAAK70-78-C-0001

August 1978

F 11 14 000

Disclaimers

The findings in this report are not to be construed as an official Department of the Army position unless so designated by other authorized documents.

Trade names cited in this report do not constitute an official endorsement or approval of the use of such commercial hardware or software.

DDC Availability Notice

Qualified requestors may obtain copies of this report from Defense Documentation Center, Cameron Station, Alexandria, Virginia 22314.

Disposition Instructions

Destroy this report when no longer needed. Do not return it to the originator.

UNCLASSIFIED

SECURITY CLASSIFICATION OF THIS PAGE (When Data Entered)

REPORT DOCUMENTATION PAGE		READ INSTRUCTIONS BEFORE COMPLETING FORM
1. REPORT NUMBER AFLRL No. 108	2. GOVT ACCESSION NO.	3. RECIPIENT'S CATALOG NUMBER
4. TITLE (and Subtitle) 6 DIRECT UTILIZATION OF CRUDE OIL AS FUEL IN U.S. ARMY FOUR-CYCLE DIESEL ENGINE, MODEL LDT-465-1C		5. TYPE OF REPORT & PERIOD COVERED
7. AUTHOR(s) 10 John V. Moffitt Edwin A. Frame		6. PERFORMING ORG. REPORT NUMBER No. 108
9. PERFORMING ORGANIZATION NAME AND ADDRESSES U.S. Army Fuels & Lubricants Res. Lab Southwest Research Institute P.O. Box 28510, San Antonio, TX 78284		8. CONTRACT OR GRANT NUMBER(s) 15 DAAG-53-76-C-0003 DAAG-70-78-C-0001
10. PROGRAM ELEMENT, PROJECT, TASK AREA & WORK UNIT NUMBERS		11. REPORT DATE 11 Aug 78
11. CONTROLLING OFFICE NAME AND ADDRESS U.S. Army Mobility Equipment Res. & Dev. Command Energy & Water Resources Lab, Ft. Belvoir, VA 22060		12. NUMBER OF PAGES 25
14. MONITORING AGENCY NAME & ADDRESS (if different from Controlling Office)		15. SECURITY CLASS. (of this report) Unclassified
		15a. DECLASSIFICATION/DOWNGRADING SCHEDULE
16. DISTRIBUTION STATEMENT (of this Report) 12 34 p. 14 AFLRL-108 Approved for public release; distribution unlimited		
17. DISTRIBUTION STATEMENT (of the abstract entered in Block 20, if different from Report) 9 Interim Rept. Apr 77-Aug 78		
18. SUPPLEMENTARY NOTES		
19. KEY WORDS (Continue on reverse side if necessary and identify by block number) diesel engine LDT-465-1C emergency fuel Multifuel engine Crude oil		
20. ABSTRACT (Continue on reverse side if necessary and identify by block number) Performance curves for the U.S. Army LDT-465-1C engine were obtained using DF-2 and crude oils of varying properties. A cyclic endurance test was run using crude oil as the fuel. The results of the crude oil fueled test were compared to test where DF-2 fuel was used. The crude oil resulted in significantly more engine wear and deposition than the DF-2. With crude oil fuel, the lubricant was severely degraded at end of test.		

DD FORM 1473
1 JAN 73

EDITION OF 1 NOV 65 IS OBSOLETE

UNCLASSIFIED

SECURITY CLASSIFICATION OF THIS PAGE (When Data Entered)

387 339

78 12 14 038

TABLE OF CONTENTS

I.	Introduction	1
	A. U.S. Army LDT-465-1C Multifuel Engine	1
II.	Engine Performance and DF-2 Comparisons using Crude Oils	1
III.	Cyclic Endurance Test Using Crude Oil	4
	A. Test Fuel	4
	B. Test Lubricant	4
	C. Test Method	5
	D. Fuel System Modifications	6
	E. Fuel Density Compensator Adjustment	7
	F. Conduct of Test	7
	G. Test Results	10
IV.	Comparison of Cyclic Endurance Tests Using DF-2 and Crude Oil	16
V.	Conclusions	23
VI.	Recommendations	23
VII.	Acknowledgements	24
VIII.	References	25

I. Introduction

The U.S. Army, in maintaining the national security, must be able to operate its fleet of combat vehicles throughout the world. This could often require long supply lines for vehicle fuels, particularly when considering the current world-wide energy situation which could result in severely restricted local procurement. An earlier project was conducted for MERADCOM (ref-1&2) to assess the feasibility of direct utilization of crude oil as an emergency energy source. In this program, a single cylinder 4-cycle diesel engine (TACOM ER-3) was used to run 120 hour endurance tests using crude oil as the fuel. The results of this investigation were very encouraging as one crude oil resulted in very similar engine condition as when a standard diesel fuel (reference DF-2) was used. The use of a crude oil of higher sulfur content and lower API gravity resulted in increased deposits and wear, but no major engine problems developed in the 120 hours of direct crude oil utilization. Recently, a steady-state endurance test was made in the U.S. Army aluminum block 6V53T two-cycle diesel engine (M-551) using a high sulfur crude oil (1.7%wS) as the fuel (ref-3). This test completed 166 hours before being terminated due to power loss caused by a burnt valve. This report addresses the direct utilization of crude oil by a multicylinder production type U.S. Army engine of four-cycle design.

I.A. U.S. Army LDT-465-1C Multifuel Engine

The tests were conducted in the LDT-465-1C multifuel engine (M-44A2). This diesel engine is of four-cycle design and displaces 7.8 liters (478 cu. in.). It has M.A.N. combustion chamber design and uses a density compensated Bosch fuel injection pump. In this turbocharged configuration, annulus pistons were used. The engine was operated on a 168-kilowatt (225-Bhp) eddy-current dynamometer and in this configuration produced about 104 kW (140 bhp) when using DF-2.

II. Engine Performance Comparisons Using Crude Oils and DF-2

Variable speed runs at full-rack were conducted in the four-cycle LDT-465-1C multifuel engine using reference DF-2 and four different Texas crude oils which are representative of high production rate crudes on a world-wide basis. The purpose of these full-rack runs, which covered the speed range of 1400 to 2600 rpm in 200 rpm increments, was to compare the performances of these crudes with that of conventional DF-2 in this Army engine. The properties of DF-2 are compared to those of the four crude oils, i.e., North Alazan (AL-5250); KMA (AL-5277); TXL (AL-5283); and Pearsall (AL-6846), in Table 1.

TABLE 1. TEST FUELS PROPERTIES

Oilfield	--	N. Alazan	KMA	TXL	Pearsall
AL-	DF-2	5250	5277	5283	6846
Gravity, API°	33.2	41.8	41.2	37.2	26.0
KVIS @ 38°C, cS	3.2	2.0	2.6	4.6	37.6
Sulfur w%	0.42	0.06	0.20	0.43	1.7
GC BP Distribution					
w% off @ °C					
10%	242	112	97	97	176
50%	271	244	301	319	501

In the LDT-465-1C performance comparisons of DF-2 and the four crude oils, the fuel density compensator on the engine was adjusted to yield a full-rack flow rate of 29.5 kg/h of DF-2 at 2600 rpm. No further adjustment to the density compensator was made throughout the variable speed evaluations of DF2 and the crude oils. Moreover, the standard configuration of the engine was neither modified nor altered for these tests. The engine lubricant was a mineral based, SAE viscosity grade 30 product conforming to specification MIL-L-2104C (Lubricating Oil, Internal Combustion Engine, Tactical Service).

The results of these variable speed, engine performance comparisons runs are graphically depicted in Figure 1 in which observed brake power and brake specific fuel consumption (BSFC) are plotted against engine speed. Under the conditions of these LDT-465-1C engine tests, the data indicate that both the brake power and BSFC with North Alazan crude (AL-5250) compared most favorably overall to the values obtained with DF-2 at equivalent engine speeds. From 1400 to 2400 rpm, the KMA crude (AL-5277) yielded only slightly lower full-rack power than DF-2 and, at 2600 rpm, the available power was equal to that of DF-2. The specific fuel economy of the KMA crude at 1600 rpm was better than that of DF-2 or any of the other three crudes, and, at 2600 rpm was equal to that of DF-2. On the other hand, the Pearsall crude (AL-6486) gave significantly lower power and poorer economy over the entire speed range than DF-2 or any of the other crudes at equivalent speeds. The performance of the TXL crude (AL-5283) fell between that of AL-5277 and AL-6486. The serpentine nature of all the curves shown in Figure 1, including those for DF-2, is tentatively attributed to fuel injection and/or turbocharging characteristics peculiar to the LDT-465-1C engine, while the differences in the fuel's performance at any given speed probably indicate the effects of fuel property differences on combustion efficiency at the fixed setting of the fuel density compensator.

Based on the findings of these fuel performance comparisons, it appears that the North Alazan crude (AL-5250) and possibly the KMA crude (AL-5277) might be satisfactorily substituted for DF-2 in fueling the LDT-465-1C engine without appreciable performance change, but only in emergency situations. While none of these crudes are presently available in quantities sufficient to meet military supply requirements, the results can be extrapolated to include any other crudes throughout the world which have similar properties.

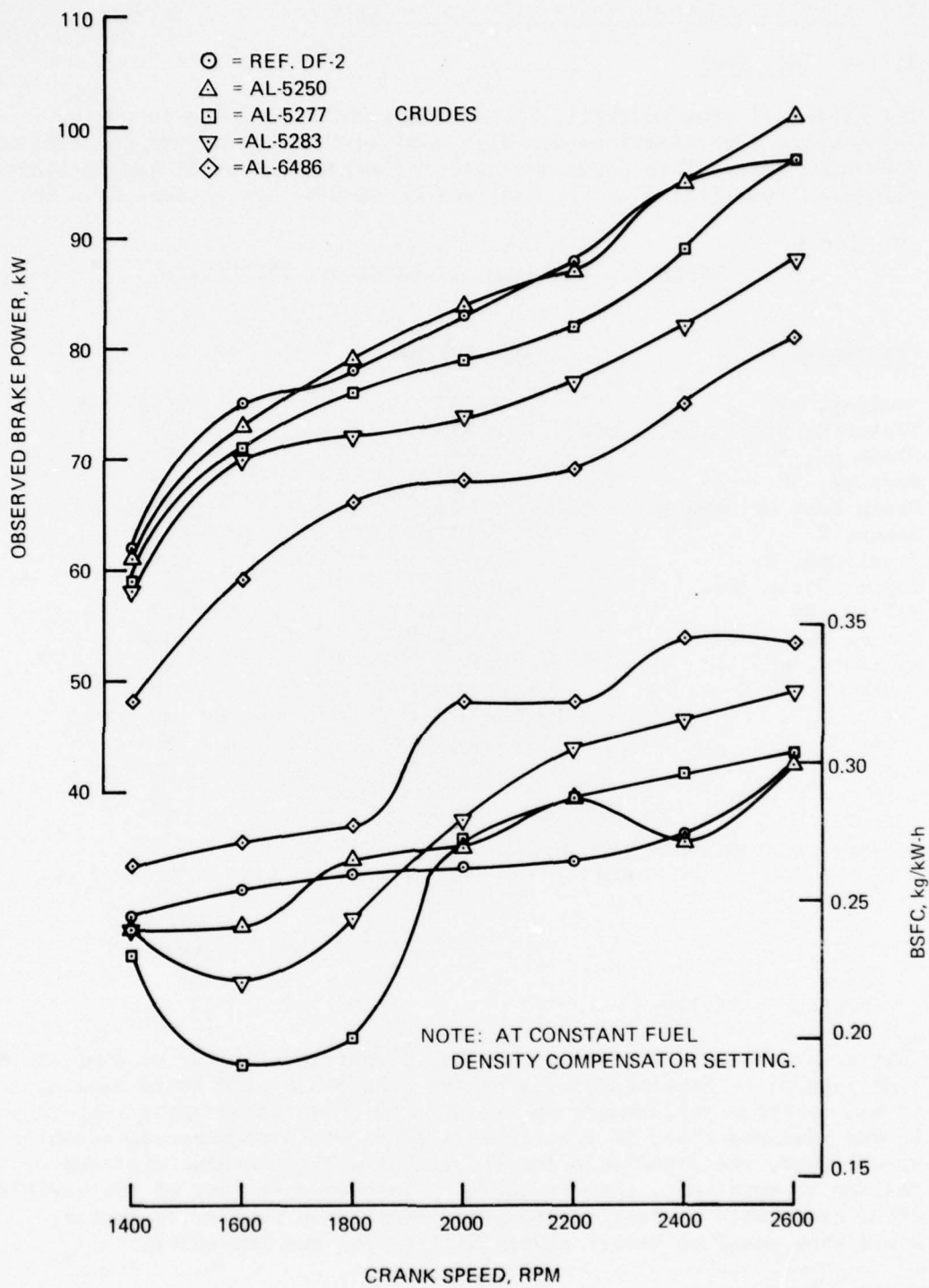


FIGURE 1. FULL-RACK PERFORMANCE COMPARISON OF CRUDE OILS AND REF. DF-2 IN AN LDT-465-1C MULTIFUEL ENGINE

III. Cyclic Endurance Test Using Crude Oil

III.A. Test Fuel

The crude oil from Pearsall, TX (AL-6846) which was used in making performance determinations was also used as the fuel during the cyclic endurance test. This crude was used as fuel in the 6V53T steady-state endurance test (ref-3). The analyses of AL-6846 are presented in Table 2.

TABLE 2. PEARSALL, TX CRUDE OIL PROPERTIES

<u>Properties</u>	<u>ASTM Method</u>	
Gravity, API°	D 287	26.0
Kinematic Vis, @ 38°C, cSt	D 445	37.6
Flash pt, °C	D 93	0
Pour pt, °C	D 92	-10
Gross Heat of Combustion MJ/kg	D 240	43.41
Water, %	D 1744	0.11
Total Ash, %w	D 482	0.02
Copper Strip Cor.	D 130	1B
Sulfur, %w	D 1266	1.7
Cetane No.	D 613	40.0
Elements, ppm	AA	
Ni		10
V		95
Ca		5
Al		50
Si		10
Fe		5
Boiling Point Distribution by GC		
w% off		°C
10		176
20		266
50		501
60		569
Residue = 36.1%w		

This crude was selected because it has properties similar to many of the high production rate crude oils of the Middle East and South America and it had inferior performance in the LDT-465-1C variable speed comparisons. It was reasoned that, if the Pearsall crude would demonstrate acceptable power, wear, and deposition levels without causing engine distress or failure in this test, then it could be assumed that many of the world's other crude oils of less severe properties, when similarly tested, would show equal or better compatibility with the LDT-465-1C.

III.B. Test Lubricant

The test lubricant used was REO 203, grade 30 which is of MIL-L-2104C (ref-4) quality level. Properties of this lubricant are summarized in Table 3.

TABLE 3. TEST LUBRICANT REO 203

<u>Property</u>	<u>ASTM Method</u>	<u>New Oil</u>
K. Vis. cS, 38°C (100°F)	D 445	121.6
K. Vis. cS, 99°C (210°F)	D 445	12.6
VI	D 2270	103
TAN	D 664	2.97
TBN	D 2896	5.08
Insolubles, wt%	D 893	
Pentane A		0.05
Benzene A		0.04
Pentane B		0.03
Benzene B		0.02
API Gravity, °	D 287	27.4
Pour Point, °C	D 97	-21
Flash Point, °C	D 92	241
Carbon Residue, wt%	D 524	1.19
Sulfated Ash	D 874	1.01
<u>Elemental</u>	<u>Method</u>	
Ba, ppm	AA	NIL
Mg, ppm	AA	NIL
Ca, wt%	AA	0.24
Zn, wt%	AA	0.09

This lubricant was selected to permit comparison of this test with a previous test which used reference DF-2 and followed the same endurance test procedure (ref-5).

III.C. Test Method

The endurance procedure chosen to evaluate the direct utilization of AL-6486 crude oil in the LDT-465-1C engine was the Army/CRC Wheeled-Vehicle Cyclic Test (ref-6). This 210-hour, laboratory dynamometer procedure is designed to simulate approximately 32,180 kilometers (20,000 miles) of military wheeled-vehicle operation on the proving ground and thus provide a meaningful assessment of fuel/lubricant/engine compatibility. The test cycle consisted of alternating periods of full-power and cold idling with an overnight shutdown. Table 4 shows the test cycle conditions used.

TABLE 4. WHEELED-VEHICLE TEST
Cycle/Day for 15 Days

<u>Period</u>	<u>Time, hrs</u>	<u>Load, %</u>	<u>RPM</u>	<u>Coolant Temp, °C</u>
1	2	100	2600	82
2	1	0	850	38
3	2	100	2600	82
4	1	0	850	38
5	2	100	2600	82
6	1	0	850	38
7	2	100	2600	82
8	1	0	850	38
9	2	100	2600	
10	$\frac{10}{24}$	-----Overnight Shutdown-----		

The complete test is 15 days at 14 hours/day operation for a total of 210 hours.

III.D. Fuel System Modifications

Prior to starting the test with the Pearsall crude, the fuel system was modified to enable preheating the crude to about 60°C before it entered the primary filter and thereby reduce the possibility of wax clogging of the filter element. The modifications were as follows: A clean 18.9 liter (55 gallon) steel drum, serving as a fuel heater/weigh tank was equipped with fuel inlet and outlet fittings, an immersion thermocouple, and a thermosthich through its lower sidewall. The top end of the drum was fitted with an atmospheric vent, then the external two-thirds of the sidewall were wrapped with several turns of electric thermal tape, which was connected, through the thermosthich, to a 110-VAC source. The entire drum, except the bottom end, was then insulated with fiberglass, after which the drum was placed upright on a platform scale located about 1.5 meters from the engine bedplate. The two fuel filters on the engine block were bypassed, and instead, two identical filters were mounted on an upright bracket located at the edge of the bedplate nearest the fuel heater drum. To maintain the elevated fuel temperature through both filters, the secondary filter was wrapped with electric thermal tape to provide boost heat, if required, and a thermocouple and thermosthich were externally attached to the filter wall. To monitor filter clogging, three pressure gauges were installed: one each at the primary filter inlet, between the primary and secondary filter, and at the outlet of the secondary. Flexible fuel supply and return lines were installed between the weigh drum outlet and the engine pump, while conventional tubular lines were installed between the pump and filters and between the filters and the fuel distribution unit. The supply line from the weigh drum to the pump and filters, as well as the filters themselves, were insulated with fiberglass, and a fuel shutoff valve was installed at the fuel inlet to the weigh drum. The test crude was supplied, prefiltered to the weigh drum from a mobile tanker parked outside the laboratory. These special fuel system changes constituted the only modifications to an otherwise standard laboratory configuration of the engine and its ancillary systems.

III.E. Fuel Density Compensator Adjustment

Upon completing the preceding modifications to the fuel system, the engine oil sump and lubrication system were charged with REO 203, MIL-L-2104C, grade 30 lubricant. The fuel weigh drum was filled to about two-thirds of its capacity with test crude AL-6846, and the combined weight of the drum and fuel noted. Heat supply to the fuel weigh drum was then turned on and the thermostat was adjusted to hold the temperature of the contained fuel at 60°C. When the fuel temperature stabilized at the set-point, the engine was started and warmed up to 2600 rpm and full-rack conditions, at which time the fuel flow rate was noted. The engine was then stopped and the fuel density compensator was adjusted in an effort to obtain the same flow rate with the AL-6846 crude at 2600 rpm and full-rack as the 29.6 kg/h obtained with DF-2 under the same conditions. After a few similar adjustments of the compensator, the desired flow rate of the test crude was achieved and no further readjustments were made throughout the subsequent evaluations of that fuel.

III.F. Conduct of Test

Using AL-6846 crude, a variable speed, full-rack run was then conducted to determine the brake power output and BSFC of the LDT-465-1C engine at zero hours of the 210-hour endurance test. As indicated in Figure 2, data were taken in 200 rpm increments over the range of 1400 to 2600 rpm, inclusive. The average fuel temperature at the primary filter was 59.7°C for this power calibration run. When compared to Figure 1, these data show that AL-6846 crude still produced significantly lower brake power and poorer specific fuel economy than the reference DF-2 over the same speed range.

After completing the pre-test power calibration, the engine was started on the 210-hour cyclic endurance evaluation of AL-6846 crude. The daily cyclic schedule (Table 4) required alternate operation for two hours at 2600 rpm, full-rack and 82°C jacket coolant out and one hour at 850 rpm, no load and 38°C jacket coolant-out, for a total of 14 hours. A maximum of 10 minutes was allowed for coolant temperature reduction after each two-hour power mode. Just prior to shutdown at the end of each 14 hours, a "hot", used oil sample was withdrawn from the engine gallery for analysis. One minute after shutdown the sump oil level was determined by dipstick, and new, weighed oil was added, as required, to restore the original level. Table 5 contains the summarized engine operating data as well as the overall average hourly oil consumption for this test.

Upon completing 56 hours, the test was tentatively terminated when it was observed that the pressure differential across the primary fuel filter had apparently increased from essentially zero to about 620 kPa, thus indicating severe clogging of the element despite preheating of the fuel. Moreover, during the same period the observed brake power (at 2600 rpm) had decreased 6.0%. After withdrawing an oil sample from the gallery, the engine was stopped, and the lubricating system was drained in anticipation of engine teardown and inspection. Analysis of the oil

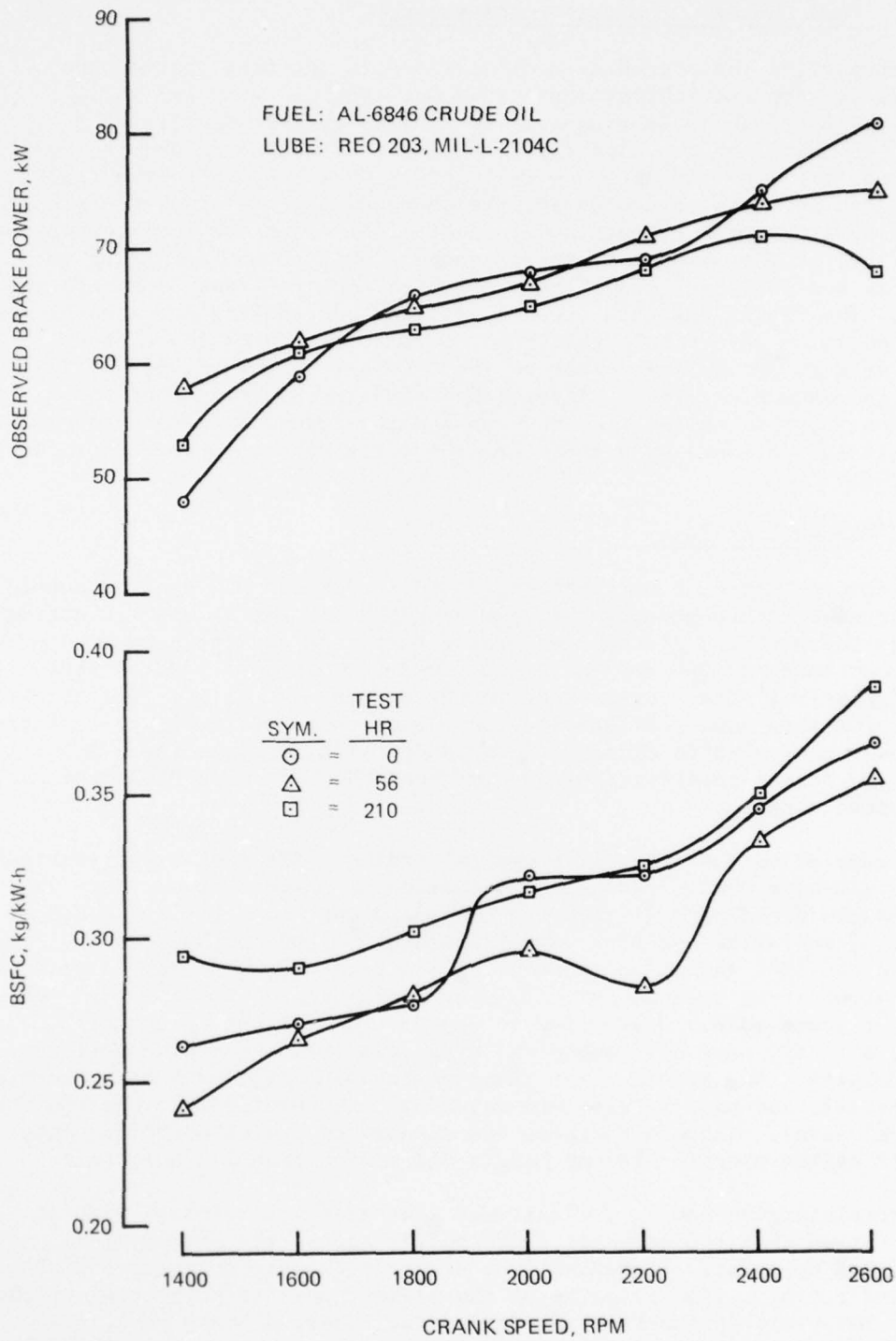


FIGURE 2. LDT-465-1C ENGINE POWER CHECKS AT FULL RACK

TABLE 5. 210-HOUR WHEELED VEHICLE CYCLIC TEST

Engine: LDT-465-1C Fuel: Pearsall (TX) Crude (AL-6846)
Lubricant: REO 203

Summary of Operating Conditions

	<u>Power Mode</u>			<u>Idle Mode</u>
	<u>Min.</u>	<u>Max.</u>	<u>Avg.</u>	<u>Avg.</u>
Speed, rpm	2600	2600	2600	850
Obs. Brake Power, kW	64.9	79.3	73.6	
Fuel Rate, kg/h	25.3	29.0	26.9	
Blowby Rate, M ³ /h (at 28.3°C and atmospheric press.)	6.79	8.93	8.10	
<u>Temperatures, °C</u>				
Jacket Coolant-in	76.0	77.1	76.6	
Jacket Coolant-out	81.6	83.3	82.1	37.7
Fuel (at primary filter inlet)	52.2	67.7	59.9	56.1
Intake Air (at filter)	26.6	43.3	35.5	
Sump Oil	103	110	107	51.1
Int. Manifold Air	102	115	108	
Exhaust (before turbo)	582	676	615	
Exhaust (after turbo)	493	543	510	
<u>Pressures (observed)</u>				
Main Oil, kPa	317	400	365	401
Intake Manifold, Pa	308	370	331	
Exhaust Manifold, Pa	370	427	397	
Oil Consumption, kg/h			0.0625	

sample by X-ray fluorescence (XRF) showed an iron accumulation of 250 parts per million (ppm). At that point, it was discovered that the fuel filter had not clogged, but rather the filter inlet pressure gauge had failed. Therefore, after installing a new gauge and replacing both fuel filter elements, the lubrication system was recharged with fresh REO 203, and an interim, variable speed, full rack power curve was conducted with the test fuel to confirm the previously observed power loss. The resultant brake power and BSFC data obtained in the interim calibration run are also plotted in Figure 2. By comparison of these data with those of the initial calibration at zero test hours, it can be seen that, at 2600 rpm, the power obtained in the interim run was 6.0 kW (7.4%) lower, although the BSFC was slightly better. In view of these differences, it was decided to inspect the injector tips and combustion chambers for possible excessive deposit buildups or other distress. Upon removing the cylinder heads, it was observed that the injector tips and cylinder liner walls were in good condition but a relatively thick layer of hard, carbonaceous-like deposit had accumulated in the piston combustion bowls. After cleaning the bowls, the cylinder heads were reinstalled, and, following a brief engine warmup to retorquer the head bolts and adjust valve and injector tappet clearances to standard, the endurance evaluation of the Pearsall crude (AL-6846) was resumed from 56 hours. During the first two-hour power mode of operation following resumption of the test, it was noticed that the brake power level was only 2.3% lower and the BSFC 1.4% higher than during the corresponding period at start of test. Since these differences were small, they were attributed to normal experimental error.

With the exception of two additional failures of the pressure gauge at the inlet to the primary fuel filter, one at 126 test hours and the last at 140 test hours, the endurance run was continued to 196 hours without interruption, although the average daily brake power output gradually deteriorated about 9.8% and the iron content in the lubricant as determined by XRF analysis increased to 375 ppm, compared to the values shown at 56 hours. Because of the power loss (without indication of fuel filter clogging) and the high increase of iron in the oil, it was decided to remove the cylinder heads and inspect for deposit increase in the piston bowls and distress of the injectors. The piston bowls contained only moderate deposits, which were subsequently removed, and the fuel discharge pressures required for the injectors were acceptable. After reinstalling the cylinder heads and repeating the procedure of retorquing the head bolts and adjusting the proper tappet clearances, the test was completed to its scheduled 210 hours. During this final 14-hour period, the average brake power suffered an additional 3.0% loss and the iron in the oil rose to 380 ppm with no indication of fuel filter clogging.

III.G. Results

Table 6 shows the post-test deposit ratings of the cylinders, valves, pistons, and piston rings. The cylinder ratings, which included the areas above, within, and below piston ring travel, indicated no lacquered areas in any of the liners, but indicated an average of 97.5% carbon coverage above ring travel, while the average glazing in the ring travel area was 7%. There were no stuck or sluggish valves, and their

TABLE 6. 210-HOUR WHEELED VEHICLE CYCLIC TEST

ENGINE: LDT-465-1C FUEL: Pearsall(TX)Crude (AL-6846)
LUBRICANT: REO 203

DEPOSIT RATING DATA

<u>Area</u>	<u>Type</u>	<u>Cylinders, % of Area Covered</u>						<u>Avg</u>
		<u>Cylinder No.</u>						
		<u>1</u>	<u>2</u>	<u>3</u>	<u>4</u>	<u>5</u>	<u>6</u>	
Above ring travel,	Lacq.	0	0	0	0	0	0	0
	Carbon	25	100	100	100	100	100	97.5
Ring travel,	Lacq.	0	0	0	0	0	0	0
	Carbon	0	0	0	0	0	0	0
	Glazing	10	15	5	2	5	5	7
Below ring travel,	Lacq	0	0	0	0	0	0	0
	Carbon	0	0	0	0	0	0	0

<u>Valve</u>	<u>Valves, Demerits</u>						<u>Avg</u>
	<u>Cylinder No.</u>						
	<u>1</u>	<u>2</u>	<u>3</u>	<u>4</u>	<u>5</u>	<u>6</u>	
Intake	2.0	1.0	3.5	2.8	2.5	3.0	2.5
Exhaust	0.5	0.5	0.5	0.5	0.5	0.5	0.5

<u>Pistons, WTD*</u>						
<u>Piston No.</u>						
<u>1</u>	<u>2</u>	<u>3</u>	<u>4</u>	<u>5</u>	<u>6</u>	<u>Avg</u>
332	448	465	451	457	417	428

<u>Groove</u>	<u>Piston Grooves, % Ring Supporting Carbon</u>						<u>Avg</u>
	<u>Piston No.</u>						
	<u>1</u>	<u>2</u>	<u>3</u>	<u>4</u>	<u>5</u>	<u>6</u>	
Top	6.3	42.5	56.3	0	96.3	1.3	33.8
No. 2	100.0	95.0	70.0	75.0	50.0	96.3	81.1

Compression Rings, Avg. % of Upper, Lower&Inside Areas

<u>Ring</u>	<u>Type Deposit</u>	<u>Piston No.</u>						<u>Avg</u>
		<u>1</u>	<u>2</u>	<u>3</u>	<u>4</u>	<u>5</u>	<u>6</u>	
No. 1	Lacq.	6.7	1.7	13.3	0	15.0	0	6.1
	Carbon	33.3	33.3	20.0	33.3	0	33.3	25.5
No. 2	Lacq.	5.7	13.3	3.3	25.0	41.7	20.0	18.2
	Carbon	33.3	20.0	30.0	16.7	10.0	0	18.3
No. 3	Lacq.	13.3	0	1.7	28.3	5.0	0	8.1
	Carbon	33.3	33.3	33.3	33.3	33.3	33.3	33.3

* = Weighted Total Deposits

Oil Ring Slots, % Open
All ring slots 100% open

deposit ratings, based on demerits, showed the intake valve deposits averaged five times those of the exhaust valves, but, overall, both sets were relatively clean. The pistons' weighted total deposits (WDT) ratings ranged from 332 (piston No. 1) to 465 (piston No. 3) and averaged 428, where 900 represents the maximum possible lacquer and carbon deposit. Only the top two compression ring piston grooves were rated for percent of ring supporting carbon fill. In these ratings, the top (No. 1) groove averaged 34% while the second groove averaged about 2.4 times as much at 81%. The average percentages each of lacquer and carbon deposits on the upper, lower, and inside areas of each of the three compression rings were determined, from which an overall average for each type of deposit across a given ring number was calculated. In general, these ratings showed the average percent of lacquer coverage was lower than that of carbon, which was mostly found on the inside area of the rings. No oil ring clogging was found.

As shown in Table 7, wear measurements were confined to cylinder bore and piston ring end gap increases. The cylinder bores were measured in relation to the position of the top piston ring at top dead center (TDC), 90 deg., and bottom dead center (BDC). From these data it is evident that liner wear in this test, as might be expected, generally decreased from the transverse axis to the longitudinal, and from the TDC position of the top ring to the BDC position. It is also apparent in the table that piston ring wear, as reflected in end-gap increases, was modest. These increments were determined by comparison of ring end gaps in a standard gauge block at engine assembly and teardown.

The post-test surface conditions of the cylinder bores, valves and valve gear, pistons, connecting rod bearings and journals, piston pin bushings, and piston ring faces are described in Table 8. The cylinder bores had light scratches over and below the ring travel areas, but there was no evidence of scuffing or scoring. All intake and exhaust valves were free in their guides and, with the exception of light pitting and slight discoloration of their faces, were normal in appearance. The valve gear, which included valve and injector tappets, rocker arms, and cam lobes, was normal. The crowns and combustion bowls of the pistons were not rated for appearance because of the interim cleanups of those areas. Of the bearings and journals only those of the connecting rods were inspected for appearance. All of the connecting rod journals were normal, but No. 1 rod bearing displayed light scratches, some discoloration and imbedment of small copper flakes, while the remaining five rod bearings were also lightly scratched and discolored, but also showed partial severe wear. All piston pin bushings appeared normal. The faces of all compression and oil control piston rings evidenced no burning, scuffing, or other distress, and all rings were found free in the piston-ring grooves.

Table 9 contains data concerning the degradation of the engine lubricant, REO 203, throughout the 210-hour evaluation of AL-6846 crude in the LDT-465-1C engine as determined by conventional ASTM methods, X-ray fluorescence (XRF) and gas chromatographic (GC) analyses of periodic used oil samples. The obvious discontinuities in the data between test hour 56 and 70 were due, of course, to the oil change performed immediately following hour 56. It should be noted in appraising these

TABLE 7. 210-HOUR WHEELED-VEHICLE CYCLIC TEST

ENGINE: LDT-465-1C FUEL: PEARSALL(TX) CRUDE (AL-6846)
 LUBRICANT: REO 203

WEAR DATA

Cylinder Bore Increase, mm

<u>Longitudinal</u>	<u>Cylinder No.</u>						<u>Avg</u>
	<u>1</u>	<u>2</u>	<u>3</u>	<u>4</u>	<u>5</u>	<u>6</u>	
<u>Top Ring Pos.</u>							
@ T.D.C.	0.020	0.058	0.020	0.046	0.028	0.025	0.033
@ 90 deg.	0.018	0.010	0.003	0.010	0.018	0.018	0.013
@ B.D.C.	0.015	0.013	0.005	0.013	0.015	0.015	0.011
<u>Transverse</u>							
<u>Top Ring Pos.</u>							
@ T.D.C.	0.038	0.041	0.041	0.036	0.046	0.030	0.039
@ 90 deg.	0.028	0.020	0.018	0.018	0.018	0.020	0.020
@ B.D.C.	0.020	0.015	0.010	0.013	0.013	0.033	0.017
<u>Avg. Long&Trans</u>							
<u>Top Ring Pos.</u>							
@ T.D.C.	0.029	0.050	0.031	0.041	0.037	0.028	0.036
@ 90 deg.	0.023	0.015	0.011	0.014	0.018	0.019	0.017
@ B.D.C.	0.018	0.014	0.008	0.013	0.014	0.024	0.014

Piston Ring End Gap Increase, mm

	<u>Piston No.</u>						<u>Avg</u>
	<u>1</u>	<u>2</u>	<u>3</u>	<u>4</u>	<u>5</u>	<u>6</u>	
Top Ring	0.203	0.152	0.229	0.102	0.152	0.178	0.169
No. 2 Ring	0.051	0.102	0.102	0.102	0.102	0.127	0.098
No. 3 Ring	0.102	0.076	0.051	0.152	0.051	0.102	0.089
No. 4 Ring (oil)	0.305	0.279	0.305	0.305	0.254	0.356	0.301

TABLE 8. 210-HOUR WHEELED-VEHICLE CYCLIC TEST

ENGINE: LDT-465-1C FUEL: PEARSALL(TX) CRUDE (AL-6846)
LUBRICANT: REO 203

SURFACE CONDITIONS OF PARTS

Cylinder Bores

Ring Travel Area = light scratches on all cyls.
Below Ring Travel Area = light scratches on all cyls.

Valves

Freedom in Guide
Heads
Faces
Seats
Stems
Tips

Intake

all free
all normal
(1)
all normal
all normal
all normal

Exhaust

all free
all normal
(1)
all normal
all normal
all normal

(1) = light pitting and discoloration

Valve Gear

Tappets
Rocker Arms
Cams

Intake

all normal
all normal
all normal

Exhaust

all normal
all normal
all normal

Pistons

Top Lands
Skirts
Pins

all normal
all normal
all normal

Bearings & Journals

	Bearing No.						
	1	2	3	4	5	6	7
Main-Bearing							
-Journal							
Rod-Bearing	(1)	(2)	(2)	(2)	(2)	(2)	---
-Journal							---
Piston Pin Bushing							---

(1) = Lt scratches, discolored and small Cu flakes imbedded

(2) = Lt scratches, discolored and partially worn through to show Cu

Ring Faces/Condition in Grooves

Top Rings - All normal/all free
No. 2 Rings - All normal/all free
No. 3 Rings - All normal/all free
No. 4 Rings - All normal/all free

TABLE 9. SUMMARY OF LUBRICANT DEGRADATION DATA

Test Hours	(New Oil)	Test: 210-HR WHEELED VEHICLE CYCLIC. Engine: LDT 465-1C. Fuel: PEARSALL (TX) CRUDE (AL-6846). Lube: REO 203														
		14	28	42	56	70	84	98	112	126	140	154	168	182	196	210
Kin. Vis., cSt., @ 37.7°C (D445)	121.6	133.8	147.0	182.3	125.3	ND	154.7	ND	184.6	199.4	ND	236.2	ND	276.7	309.6	
Kin. Vis., cSt., @ 98.8°C (D445)	12.61	13.74	14.75	19.02	13.07	ND	15.79	ND	19.38	22.13	ND	22.75	ND	28.02	31.66	
TAN (D664)	2.97	3.00	3.79	4.11	3.36	ND	3.61	ND	4.42	4.93	ND	6.03	ND	6.72	8.80	
TBN (D2896)	5.08	4.14	4.13	4.25	3.72	4.84	4.25	ND	3.05	2.07	ND	1.70	ND	1.76	1.51	
Sulfated Ash, % (D874)	1.01	ND	ND	ND	1.10	ND	ND	ND	ND	1.25	ND	ND	ND	ND	1.36	
Insolubles, % Pentane B (D893)	0.03	ND	ND	ND	0.88	ND	ND	ND	ND	5.72	ND	ND	ND	ND	10.85	
Benzene B (D893)	0.02	ND	ND	ND	0.74	ND	ND	ND	ND	4.54	ND	ND	ND	ND	9.48	
Gravity, API @ 16°C (D287)	27.4	ND	ND	ND	28.7	ND	ND	ND	ND	23.1	ND	ND	ND	ND	20.4	
Sulfur, % (by XRF)	0.46	ND	ND	0.74	0.53	ND	0.64	0.68	0.73	0.77	0.84	0.95	0.90	0.97	0.94	
Fuel Dilution, % (by GC)	0	ND	ND	0.80	0.50	ND	ND	ND	ND	0.60	ND	ND	ND	ND	0.80	
Metals, ppm (by XRF)																
Fe	<10	95	140	190	250	40	80	105	140	155	205	240	270	330	375	380
Cu	<10	<10	<10	40	55	<10	<10	30	40	45	55	60	70	95	85	65
Cr	<10	<10	<10	<10	<10	<10	<10	<10	<10	90	<10	<10	90	<10	<10	<10
Ni	ND	<10	<10	<10	<10	<10	10	10	10	10	10	<10	10	10	10	10
V	ND	<30	<30	<30	<30	<30	<30	30	30	30	30	<30	30	30	30	30
Pb	ND	ND	ND	ND	100	<70	<70	<70	<70	<70	<70	<70	<70	<70	100	90
IR Trace No.	1550									1288						1290

ND = Not Determined.

data that, from the time of the oil change to the end of test, the recharge oil had accumulated only 154 hours of usage. With this in mind, it is significant to note the large increase in lubricant viscosity that occurred within that time frame as well as that during the first 56 test hours with the initial charge. In both cases, the oil changed from SAE grade 30 to at least grade 50, with the recharge oil reaching well in excess of grade 50 by the end of test. However, as indicated by the large increase in coagulated insolubles, the oil thickening was due primarily to the accumulation of particulates, principally carbon, rather than to oxidation. This is confirmed by comparing the infrared spectra of the lubricant at zero, 70, 140, and 210 test hours. These spectra are presented in Figures 3, 4, 5, and 6, respectively. While the XRF analyses for metals disclosed significant and rather rapid accumulations in oil samples from both the initial 56 test hours and after recharge, these increases did not appear to be consistent with the measured wear of the engine cylinders and piston rings. Apparently, some of the iron originated from other ferrous engine components such as the gear train, shaft journals, etc. In any event, had the oil not been changed at 56 test hours, it is questionable whether the test could have been completed to 210 hours before degradation of the REO 203 lubricant would have become critical with respect to engine distress due to particulate contamination.

IV. Comparison of Cyclic Endurance Tests Using DF-2 and Crude Oil

As part of another project, a 210 hour wheeled-vehicle cyclic endurance test was run using reference DF-2 and REO 203 (ref-5). The results of the crude oil test will be compared with the DF-2 test results to determine the relative degradation in engine conditions when crude oil was used as the fuel.

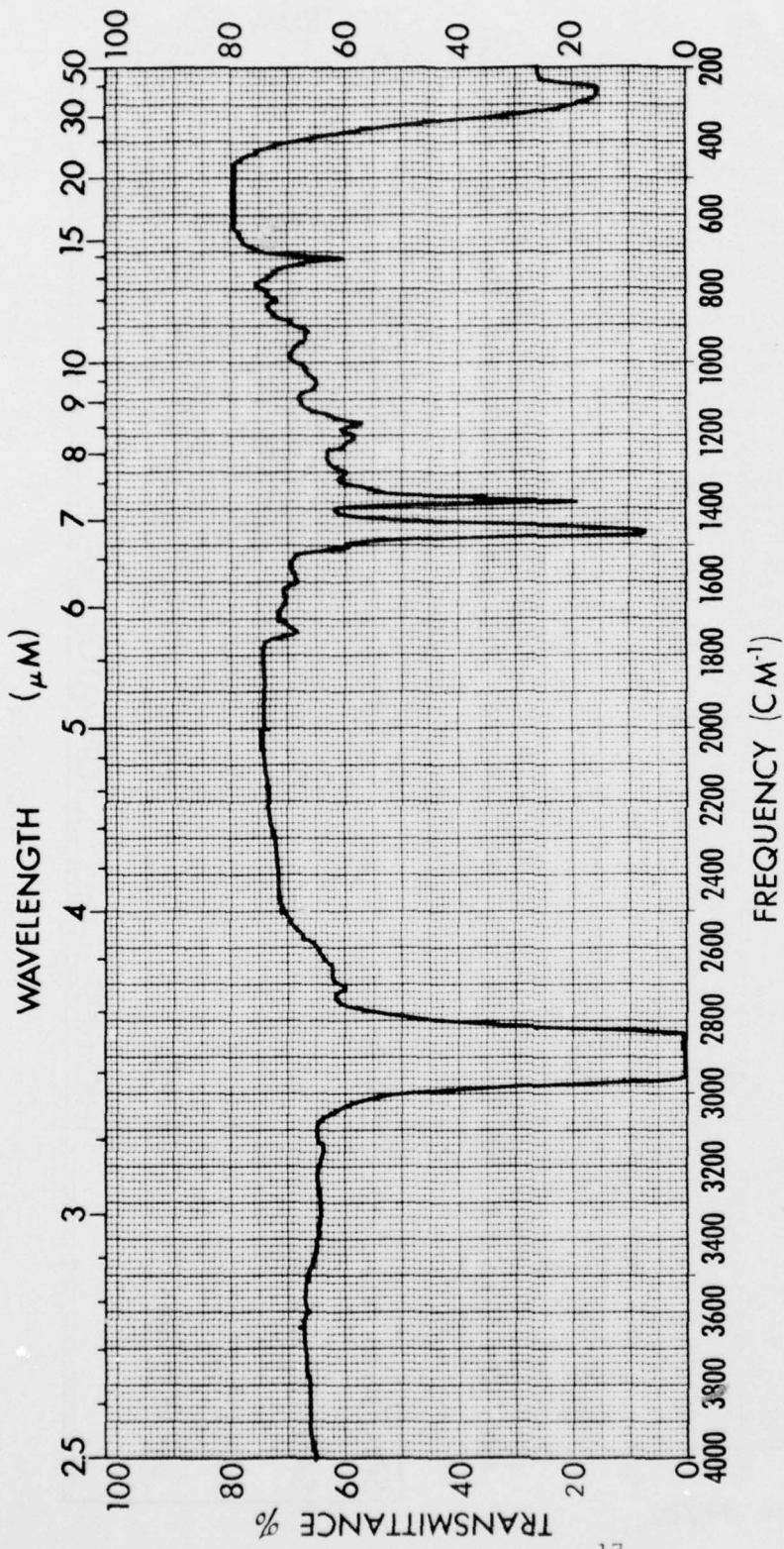
The average operating conditions for both tests are shown in Table 10.

TABLE 10. AVERAGE OPERATING CONDITIONS

	<u>DF-2</u>	<u>AL-6846</u>
Speed, rpm	2600	2600
Obs. Power, kW	88	73.6
Fuel Rate, kg/h	30.2	26.9
BSFC kg/kW-h	0.343	0.365
Oil Sump, °C	114	107
Exhaust Temp, pre turbo, °C	600	615
Oil Consumption, kg/h	0.13	0.06

While the crude oil test had lower power output, much of this was apparently caused by poor fuel delivery as opposed to poor combustion efficiency. This is evidenced by the lower fuel rate with crude oil; however, the BSFC using crude oil was only slightly higher than when DF-2 was used.

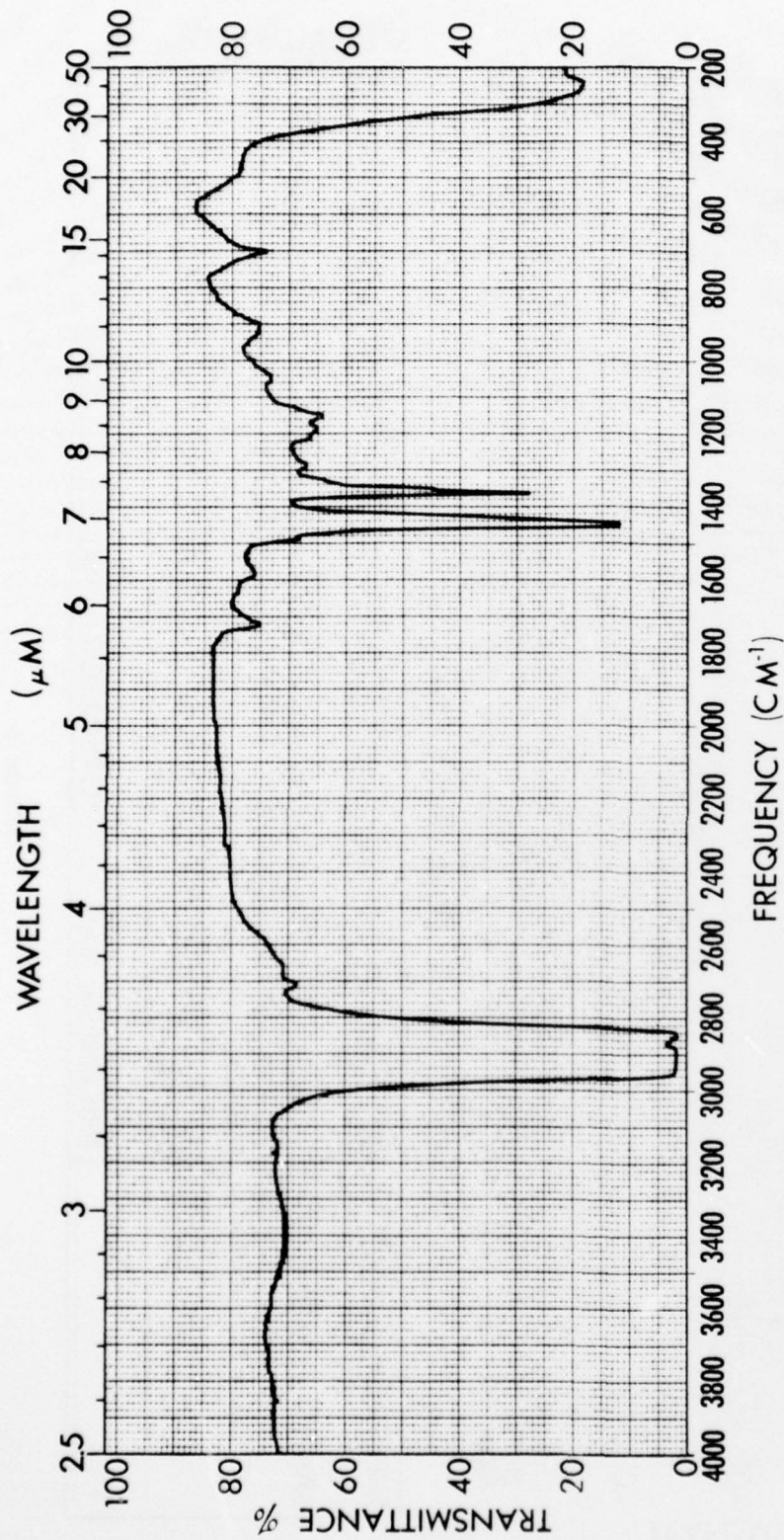
The comparative piston cleanliness ratings are shown in Table 11 which clearly reflect the increased deposits caused by crude oil use.



SPECTRUM NO. 1350
 SAMPLE REO-203

SPECTRUM NO.	ORIGIN	LEGEND	REMARKS
1350		1.	
SAMPLE REO-203		2.	
NEW (0 TEST HOURS)		DATE	11-29-78
		OPERATOR	D.B.
		THICKNESS	0.025

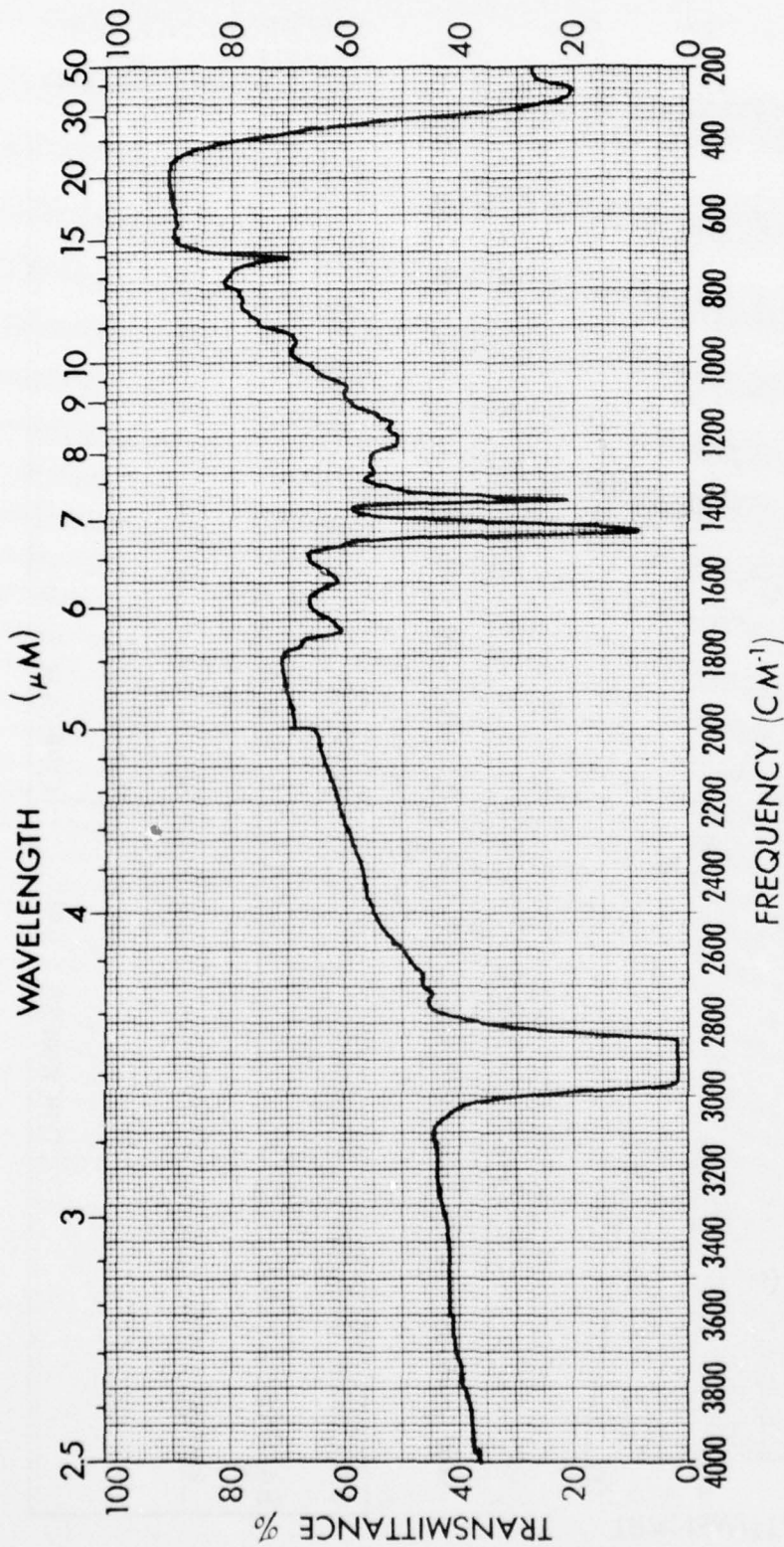
FIGURE 3



SPECTRUM NO. 1288
 SAMPLE REO-203

SPECTRUM NO. 1288	ORIGIN	LEGEND	REMARKS
SAMPLE REO-203		1.	
70 TEST HOURS	PURITY	2.	
LDT-465-1C ENGINE	PHASE	DATE 9.14.78	
	THICKNESS 0.025	OPERATOR	M.G.

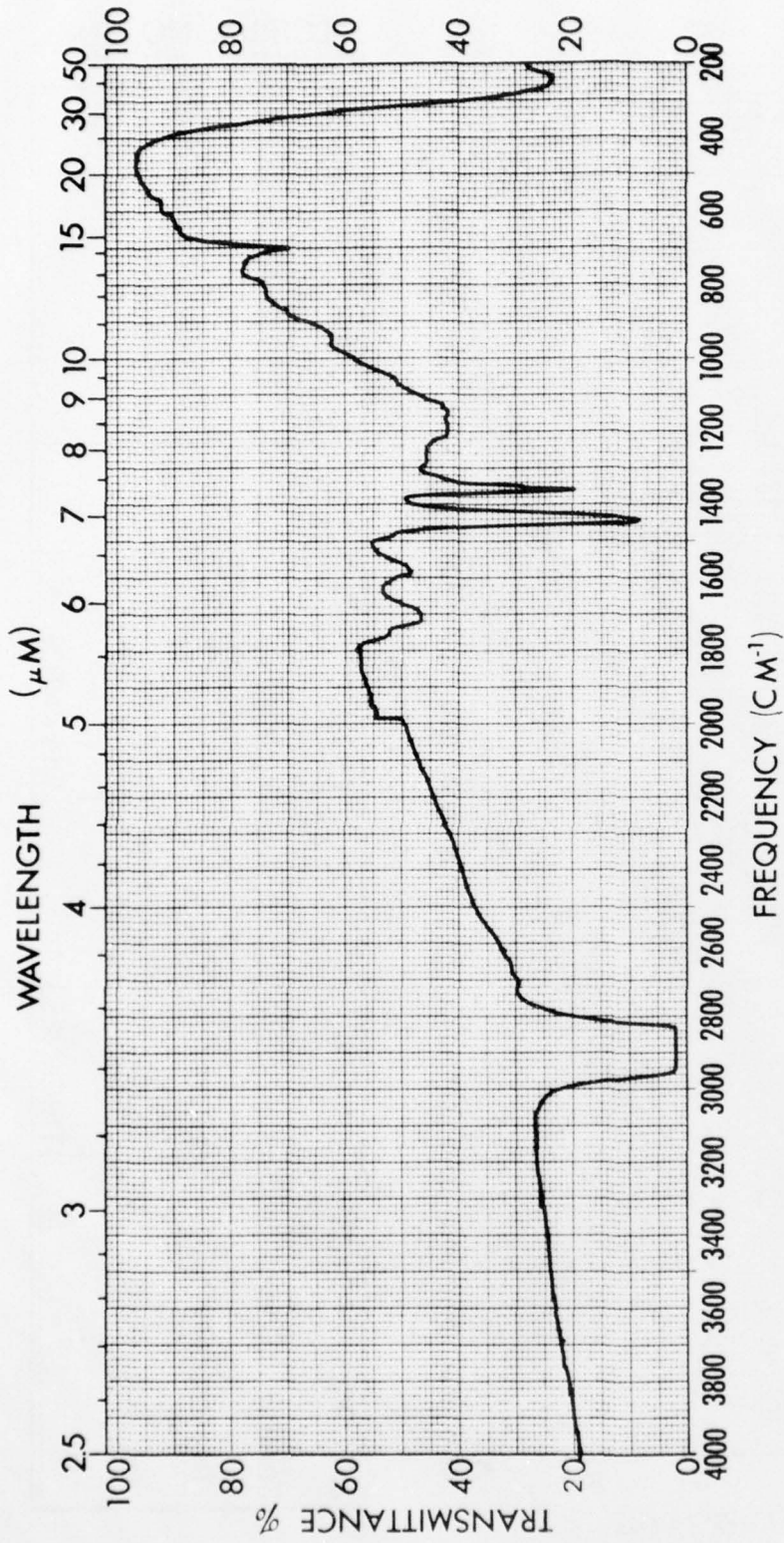
FIGURE 4



SPECTRUM NO. 1289
 SAMPLE REO-203

SPECTRUM NO. 1289	ORIGIN	LEGEND	REMARKS
SAMPLE REO-203		1.	
140 TEST HOURS	PURITY	2.	
LDT-465-1C ENGINE	PHASE	DATE 9-14-77	
	THICKNESS 0.025	OPERATOR	M.G.

FIGURE 5



SPECTRUM NO. 1290
 SAMPLE REO-203

SPECTRUM NO. 1290	ORIGIN	LEGEND	REMARKS
SAMPLE REO-203		1.	
210 TEST HOURS	PURITY	2.	
LDT-465-1C ENGINE	PHASE	DATE 9-14-77	
	THICKNESS 0.025	OPERATOR	M.G.

FIGURE 6

TABLE 11. PISTON CLEANLINESS RATINGS*

	<u>DF-2</u>	<u>AL-6846</u>
Minimum	236	332
Maximum	320	465
Avg of 6 cylinders	280	428

*weighted total deposit, where 0=clean and 900=max. deposit.

There was no overlap in ratings as the dirtiest DF-2 piston still had less deposit than the cleanest crude oil piston. The average of all six cylinders using crude oil was 48% of maximum deposit while the six DF-2 pistons averaged only 31% of max. deposit. The ring supporting carbon deposit data for the top and number 2 groove are presented in Table 12. Again, the crude oil pistons had a much higher deposit level.

TABLE 12. PISTON GROOVES, AVERAGE % RING SUPPORTING CARBON

<u>Groove</u>	<u>DF-2</u>	<u>AL-6846</u>
Top	0	34
No.2	0	81

The comparisons of average compression ring deposits are presented in Table 13.

TABLE 13. COMPRESSION RINGS, AVERAGE % DEPOSIT

<u>Ring</u>	<u>Tube Deposit</u>	<u>DF-2</u>	<u>AL-6846</u>
1	Lacquer	1	6
	Carbon	33	26
2	Lacquer	3	18
	Carbon	33	18
3	Lacquer	88	8
	Carbon	1	33

The use of crude oil did not appear to cause excessive ring deposits. Piston ring condition is summarized in Table 14. Considering ring face

TABLE 14. PISTON RING CONDITION

	<u>DF-2</u>	<u>AL-6846</u>
Freedom	All free	All Free
Burning	Cyl. No. 2 had some burning. All others normal.	All Normal

burning, the crude oil test resulted in acceptable condition, while there was some burning in one cylinder during the DF-2 test. No rings were stuck during either tests.

Engine wear was much more severe when the engine was fueled with crude oil. As shown in Table 15, the average ring gap increase was greater when crude oil was used. The average cylinder bore increase was

TABLE 15. AVERAGE PISTON RING GAP INCREASE, mm

	<u>DF-2</u>	<u>AL-6846</u>
Top Ring	0.103	0.169
No. 2 Ring	0.070	0.098
No. 3 Ring	0.046	0.089
No. 4 Ring (Oil)	0.073	0.301

also greater with crude oil fuel as shown in Table 16. The increased wear when crude oil was used as the fuel was probably directly related to the rather high sulfur content (1.7%) of AL-6846.

TABLE 16. AVERAGE CYLINDER BORE INCREASE, mm

	<u>DF-2</u>	<u>AL-6846</u>
Front/Back	0.009	0.016
Thrust/AntiThrust	0.012	0.025
Average of Both	0.011	0.021

The comparative end of test used oil analyses (Table 17) showed greater oil degradation in 154 hours using crude oil as fuel than in 210 hours when DF-2 was used.

TABLE 17. USED OIL ANALYSES (REO 203)

	<u>Method</u>	<u>DF-2</u>	<u>AL-6846</u>
Test Hours on Oil		210	154
K. Vis, cSt, 38°C	D 445	195.8	309.6
K. Vis, cSt, 99°C	D 445	17.61	31.66
TAN	D 664	4.8	8.8
TBN	D 2896	4.5	1.5
Insolubles, w%	D 893		
Pentane B		2.89	10.85
Benzene B		2.29	9.48
<u>Elements, ppm by XRF</u>			
Fe		90	380
Cr		10	1
Cu		0	65
Pb		0	90

Compared to the DF-2 test, the used oil from the crude oil test had the following significant differences:

- o much higher concentration of wear metals
- o large amounts of insolubles
- o increased oil viscosity
- o higher acid number/lower base number

V. Conclusions

Within the limited scope of these evaluations of crude oils as alternate fuels in the LDT-465-1C multifuel engine, it may be tentatively concluded that:

- o Any of the crudes tested could be used in the LDT-465-1C, but only on a short-term emergency basis, and provided that normal power output and fuel economy, as with DF-2 were not required over the speed range of 1400 to 2600 rpm.
- o Compared to DF-2, the performance of North Alazan crude (AL-5250) was the most attractive and that of Pearsall crude (AL-6846) was the least attractive of the four Texas crudes, with respect to both available power output and specific fuel economy.
- o No engine starting problems were experienced with any of the crudes.
- o In the 210-hour cyclic endurance evaluation of AL-6846, the measured engine wear and deposition levels were significantly degraded from the excellent levels observed when DF-2 fuel was used. The full-rack brake power, which initially was about 17 percent lower than that with DF-2, declined an additional 12 percent by the end of the test, while the BSFC increased about 13 percent, or 23 percent above normal with DF-2. The used oil was significantly degraded, which indicates shortened oil change intervals would be appropriate when fueling with crude oil.

VI. Recommendations

It is recommended that additional RDTE effort be performed to determine the effects of direct crude oil utilization in other full scale U.S. Army engines. While this endurance test provided an indication of engine condition degradation when a high sulfur, low gravity crude oil was used, additional endurance test information is needed for other crudes so that a matrix of crude properties versus expected engine condition could be developed for field use. Also, additional effort is needed to examine the feasibility of using field portable mini-refining (crude oil topping) units. Use of these units would lessen crude oil severity and lengthen potential engine life in times when standard fuels are not available.

VII. Acknowledgement

The authors wish to acknowledge the guidance and assistance received from Mr. S.J. Lestz (USAFLRL) and the careful attention to detail provided by the chemistry and engine laboratories at USAFLRL. Special recognition is made of Mr. E.R. Lyons who provided the expert engine deposit ratings.

VIII. References

1. Owens, E.C., Frame, E.A., "Direct Utilization of Crude Oils as Fuels in U.S. Army Diesel Engines", AFLRL Report No. 66, AD A016156, June, 1975.
2. Owens, E.C., Frame, E.A., Brizik, W., "Direct Utilization of Crude Oil As a Fuel for High-Speed Diesel Engines", SAE paper No. 750762, Sept, 1975.
3. Frame, E.A., "Direct Utilization of Crude Oil as Fuel in the U.S. Army 6V53T Diesel Engine", AFLRL Report No. 106, AD A June, 1978.
4. U.S. Military Specification MIL-L-2104C, "Lubricating Oil, Internal Combustion Engine, Tactical Service", November, 1970.
5. Owens, E.C., Lestz, S.J., Quillian Jr., R.D., "Appraisal of Extended Oil Drain Intervals Through Use of Engine or Lubricant Formulation Modifications", AFLRL Report No. 99, AD A 055923, May, 1978.
6. "Development of a Military Fuel/Lubricant/Engine Compatibility Test", Coordinating Research Council, Inc., New York, NY, Final Report, January 1967.

DISTRIBUTION LIST

	<u>No. of Copies</u>		<u>No. of Copies</u>
DEPARTMENT OF DEFENSE			
DEFENSE DOCUMENTATION CTR CAMERON STATION ALEXANDRIA VA 22314	12	DIRECTOR OF DEFENSE RES & ENG (OSD) ATTN DEPUTY DIRECTOR/RES & TECH WASHINGTON DC 20301	1
DEFENSE FUEL SUPPLY CTR ATTN DFSC-T OFC OF TECH SERVICES CAMERON STATION ALEXANDRIA VA 22314	1	OFC OF THE ASST SEC OF DEFENSE ATTN TECH ADVISORY PANEL ON FUELS & LUBRICANTS WASHINGTON DC 20301	1
		DEPARTMENT OF DEFENSE ATTN DASA (MRA & L)-ES WASHINGTON DC 20301	1
DEPARTMENT OF THE ARMY - TECHNICAL SERVICES			
HQDA ATTN DAMA-CSS-P (DR J BRYANT) DALO-TSE WASHINGTON DC 20310	1 1	COMMANDER ATTN ATSL-CTD-MS-A US ARMY ORDNANCE CTR AND SCHOOL ABDEEN PVG GD MD 21005	1
COMMANDER ATTN DAVDL-EU-TAP (MR MORROW) US ARMY AIR MOBILITY R&D LAB FORT EUSTIS VA 23604	1	COMMANDER ATTN DRCLDC (MR R ZENTNER) DRCDMD-ST (MR KLEIN) DRCMM-SP	1 1 1
COMMANDER ATTN DRDME-GL US ARMY MOBILITY EQUIPMENT R&D COMMAND FORT BELVOIR VA 22060	10	US ARMY MATERIEL DEVELOPMENT & READINESS COMMAND 5001 EISENHOWER AVENUE ALEXANDRIA VA 22333	
COMMANDER ATTN ATCL-MS ARMY LOGISTICS MGMT CTR FORT LEE VA 23801	1	COMMANDER ATTN MR T BAUML ACO DCASMA—SAN ANTONIO 615 E HOUSTON ST BOX 1040 SAN ANTONIO TX 78294	2
COMMANDER ATTN DRDAR-TST-S US ARMY ARMAMENT R&D COMMAND PICATINNY ARSENAL DOVER NJ 07801	1	COMMANDER ATTN AFZT-DI-L HQ 172 INFANTRY BRIGADE (ALASKA) DIR OF INDUSTRIAL OPERATIONS APO SEATTLE 98749	1
COMMANDER ATTN TECH LIBRARY DRSTS-MEG US ARMY TROOP SUPPORT & AVIATION MATERIEL READINESS COMMAND 4300 GOODFELLOW BLVD ST LOUIS MO 63120	1 2	COMMANDER ATTN DRXMR-TM US ARMY MATERIELS & MECHANICS RES CTR WATERTOWN MA 02172	1
COMMANDER ATTN DRDAV-EQ (MR CRAWFORD) US ARMY AVIATION R&D COMMAND BOX 209 ST LOUIS MO 63166	1	CHEMICAL & BIOLOGICAL DIV ATTN DR DAVID R SQUIRE US ARMY RES OFC BOX 12211 RESRCH TRI PRK NC 27009	1

	<u>No. of Copies</u>		<u>No. of Copies</u>
DEPARTMENT OF THE ARMY—TECHNICAL SERVICES (Cont'd)			
COMMANDER ATTN STSGP-FT STSGP-PE US ARMY GENERAL MATERIAL & PETROLEUM ACTIVITY NEW CUMBERLAND ARMY DEPOT NEW CUMBRLAND PA 17070	1 1	DIRECTOR ENG SERVICES DIV ATTN MR J MURRAY US ARMY RES OFFICE BOX 12211 RESRCH TRI PRK NC 27009	1
COMMANDER ATTN STSGP-PW US ARMY GENERAL MATERIALS & PETROLEUM ACTIVITY SHARPE ARMY DEPOT LATHROP CA 95330	1	CORP OF ENGINEERS WASHINGTON AQUEDUCT DIV 5900 MACARTHUR BLVD WASHINGTON DC 20315	1
COMMANDER ATTN DRDTA-R DRDTA-S DRDTA-RG DRDTA-NS (MR PETRICK) US ARMY TANK-AUTOMOTIVE R&D COMMAND WARREN MI 48090	1 1 3 1	COMMANDER ATTN DRXMD-TP US ARMY MAINTENANCE MGMT CTR LEXINGTON KY 40507	1
US ARMY TANK-AUTOMOTIVE MATERIEL READINESS COMMAND ATTN DRSTA-G DRSTA-S DRSTA-M DRSTA-GBP (MR McCARTNEY) WARREN MI 48090	1 1 1 1	COMMANDER ATTN ATSM-CTD-MS (MAJ BREWSTER) ATSM-CD-M ATSM-TNG-PT (LTC VOLPE) US ARMY QM SCHOOL FORT LEE VA 23801	1 1 1
DIRECTOR ATTN DRXSY-S DRXSY-CM (MR WOUMERT) US ARMY MATERIEL SYSTEMS ANALYSIS AGENCY ABDEEN PVG GD MD 21005	1 1	COMMANDER ATTN ATSH-CD-MS-M US ARMY INFANTRY SCHOOL FORT BENNING GA 31905	1
COMMANDER ATTN DRXST-MTI US ARMY FOREIGN SCI & TECH CTR FEDERAL BLDG CHARLTTSVILLE VA 22901	1	COMMANDER ATTN ATSB-TD US ARMY ARMOR SCHOOL FORT KNOX KY 40121	1 1
PRESIDENT ATTN ATZK-AE US ARMY ARMOR & ENG BOARD FORT KNOX KY 40121	1	DEPT OF THE ARMY ATTN CERL-EM CONSTRUCTION ENG RES LAB BOX 4005 CHAMPAIGN IL 61820	1
COMMANDER ATTN STEYP-MTS STEYP-MT-E US ARMY YUMA PROVING GROUND YUMA PRVG GRD AZ 85364	1 1	COMMANDER ATTN ATCD US ARMY TRAINING & DOCTRINE COMMAND FORT MONROE VA 23651	1
HQ US ARMY TEST & EVALUATION COMMAND ATTN DRSTE-TO-O ABDEEN PVG GD MD 21005	1	DIRECTOR ATTN DAVDL-LE-D (MR ACURIO) US ARMY RES & TECH LABS (AVRADCOM) PROPULSION LAB 21000 BROOKPARK ROAD CLEVELAND OH 44135	1
		COMMANDER ATTN AFLG-REG US ARMY FORCES COMMAND FT MCPHERSON GA 30330	1
		MICHIGAN ARMY MISSILE PLANT ATTN DRCPM-GCM-S OFC OF PROJ MGR XM-1 TANK SYSTEM WARREN MI 48090	1

	<u>No. of Copies</u>		<u>No. of Copies</u>
DEPARTMENT OF THE ARMY—TECHNICAL SERVICES (Cont'd)			
MICHIGAN ARMY MISSILE PLANT ATTN DRCPM-FVS-SE PROG MGR FIGHTING VEHICLE SYSTEMS WARREN MI 48090	1	PROJ MGR PATRIOT PROJ OFC ATTN DRCPM-MD-T-G US ARMY DARCOM REDSTONE ARSNL AL 35809	1
PROJ MGR M60 TANK DEVELOPMENT ATTN DRCPM-M60-TDT WARREN MI 48090	1	OFC OF PROJ MGR FAMECE/UET ATTN DRCPM-FM US ARMY MERADCOM FORT BELVOIR VA 22060	1
PROJ MGR M113/M113A1 FAMILY OF VEHICLES ATTN DRCPM-M113 WARREN MI 48090	1	COMMANDER ATTN ATSP-CD-MS US ARMY TRANS SCHOOL FORT EUSTIS VA 23604	1
PROJ MGR MOBILE ELECTRIC POWER ATTN DRCPM-MEP-TM 7500 BACKLICK ROAD SPRINGFIELD VA 22150	1	COMMANDER ATTN ATSF-CD US ARMY FIELD ARTILLERY SCHOOL FORT SILL OK 73503	1
OFC OF PROJ MGR IMPROVED TOW VEHICLE ATTN DRCPM-ITV-T US ARMY TANK-AUTOMOTIVE R&D COMMAND WARREN MI 48090	1	COMMANDER ATTN ATSE-CDM US ARMY ENG SCHOOL FORT BELVOIR VA 22060	1

DEPARTMENT OF THE NAVY

COMMANDER ATTN AIR 53451B AIR 53645 (MR COLLEGEMAN) US NAVAL AIR SYSTEMS COMMAND WASHINGTON DC 20361	1 1	COMMANDER US NAVAL CIVIL ENG LAB PORT HUENEME CA 93041	1
COMMANDER ATTN TECH LIBRARY (ORD-9132) NAVAL ORDNANCE SYSTEMS COMMAND WASHINGTON DC 20360	2	COMMANDER ATTN TECH LIBRARY CODE 2830 (MR G BOSMAJIAN) CODE 2831 DAVID TAYLOR NAVAL SHIP R&D CTR ANNAPOLIS LAB ANNAPOLIS MD 21402	1 1 1
COMMANDER ATTN CODE 6200 CODE 6180 NAVAL RES LAB WASHINGTON DC 20390	1 1	COMMANDANT ATTN CODE AX CODE LMM (LTC BEASON) DEPARTMENT OF THE NAVY US MARINE CORPS WASHINGTON DC 20380	1 1
COMMANDER ATTN CODE PE-71 (L MAGITTI) NAVAL AIR PROPULSION CTR TRENTON NJ 08628	1	COMMANDER ATTN CODE 10332 NAVAL FACILITIES ENG COMMAND TRANS MAINTENANCE MGMT BRANCH WASHINGTON DC 20390	1
SUPERINTENDENT ATTN TECH REPORTS SECTION US NAVAL POST GRADUATE SCHOOL MONTEREY CA 93940	1	JOINT OIL ANALYSIS PROGRAM—TECH SUPPORT CTR ATTN CODE 360 (MR R LEE) NAVAL AIR REWORK FACILITIES PENSACOLA FL 32508	1
COMMANDER ATTN CODE 6101F (MR R LAYNE) NAVAL SHIP ENG CTR WASHINGTON DC 20362	1		

	<u>No. of Copies</u>		<u>No. of Copies</u>
DEPARTMENT OF THE AIR FORCE			
HEADQUARTERS ATTN RDPDT (MR EAFFY) US AIR FORCE WASHINGTON DC 20330	1	COMMANDER ATTN SAALC/SFQ USAF SAN ANTONIO AIR LOGISTICS CTR KELLY AFB TX 78241	1
COMMANDER ATTN SAAMA(SAOQ) HEADQUARTERS SAN ANTONIO AIR MATERIAL AREA KELLY AFB TX 78241	1	COMMANDER ATTN MMEAP USAF WARNER ROBINS AIR LOGISTICS CTR ROBINS AFB GA 31098	1
COMMANDER ATTN AFAPL/SFL (MR HOWARD JONES) AFAPL/SFF (MR CHURCHILL) AIR FORCE AERO PROPULSION LAB WRT-PTRSN AFB OH 45433	1 1		

OTHER GOVERNMENT AGENCIES

US DEPARTMENT OF TRANSPORTATION ATTN AIRCRAFT DESIGN CRITERIA BRANCH FEDERAL AVIATION ADMIN 2100 2ND ST SW WASHINGTON DC 20590	2	DIRECTOR NATL MAINTENANCE TECH SUPPORT CTR US POSTAL SERVICE NORMAN OK 73069	2
US DEPARTMENT OF ENERGY DIV OF TRANS ENERGY CONSERVATION ALTERNATIVE FUELS BRANCH 20 MASSACHUSETTS AVENUE WASHINGTON DC 20545	2	US DEPARTMENT OF ENERGY BARTLESVILLE ENERGY RES CTR BOX 1398 BARTLESVILLE OK 74003	2
		SCI & TECH INFO FACILITY ATTN NASA REPRESENTATIVE (SAK/DL) BOX 33 COLLEGE PARK MD 20740	1