

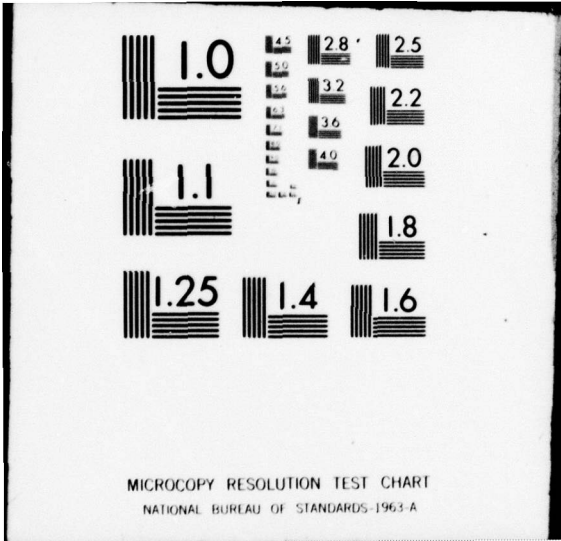
AD-A065 539

GEORGE WASHINGTON UNIV WASHINGTON D C PROGRAM IN LOG--ETC F/8 5/9
AN APPLICATION OF THE SRS/RG IN DETERMINING ENLISTED ATTRITION --ETC(U)
DEC 78 J M D'AMALIO, W M SEVON N00014-75-C-0729
SERIAL-T-389 NL

UNCLASSIFIED

1 of 2
AD
A065539





MICROCOPY RESOLUTION TEST CHART
NATIONAL BUREAU OF STANDARDS-1963-A

12
4

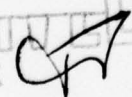
AD A0 65539

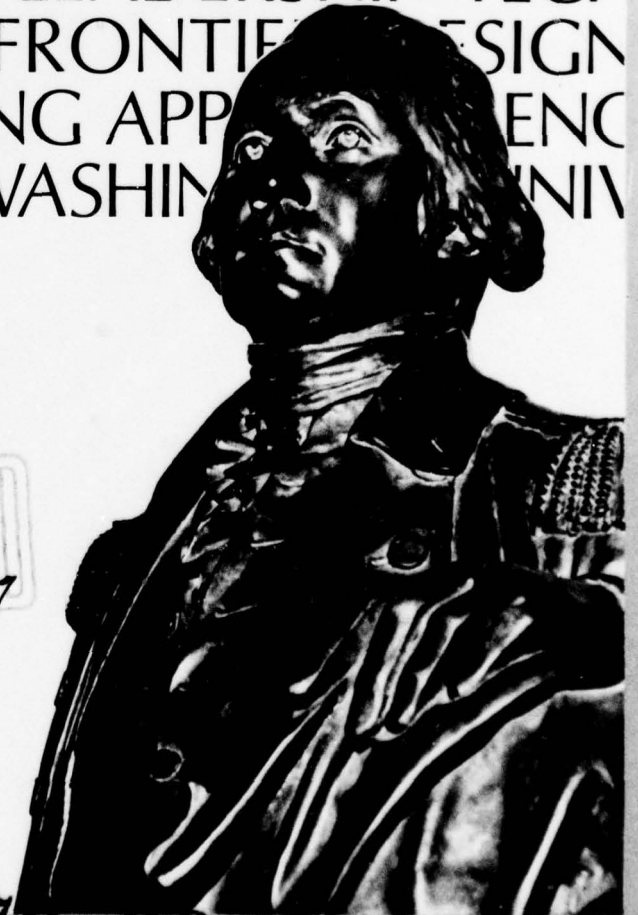
THE
GEORGE
WASHINGTON
UNIVERSITY

LEVEL

STUDENTS FACULTY STUDY R
ESEARCH DEVELOPMENT FUT
URE CAREER CREATIVITY CO
MMUNITY LEADERSHIP TECH
NOLOGY FRONTIER DESIGN
ENGINEERING APP ENO
GEORGE WASHINGTON UNIV

DDC FILE COPY

DDC
RECEIVED
MAR 12 1979




INSTITUTE FOR MANAGEMENT
SCIENCE AND ENGINEERING
SCHOOL OF ENGINEERING
AND APPLIED SCIENCE

79 03 09 084

12

AD A0 65539

AN APPLICATION OF THE SRS/RG IN DETERMINING
ENLISTED ATTRITION RATES IN THE USMC

by

Joseph M. D'Amalio
Captain Walter W. Sevon, USMC

Serial T-389
29 December 1978

DDC
RECEIVED
MAR 12 1978
C

DDC FILE COPY

The George Washington University
School of Engineering and Applied Science
Institute for Management Science and Engineering

Program in Logistics
Contract N00014-75-C-0729
Project NR 347 020
Office of Naval Research

This document has been approved for public
sale and release; its distribution is unlimited.

79 03 09 064

NONE

SECURITY CLASSIFICATION OF THIS PAGE (When Data Entered)

REPORT DOCUMENTATION PAGE		READ INSTRUCTIONS BEFORE COMPLETING FORM
1. REPORT NUMBER T-389	2. GOVT ACCESSION NO.	3. RECIPIENT'S CATALOG NUMBER
4. TITLE (and Subtitle) AN APPLICATION OF THE SRS/RG IN DETERMINING ENLISTED ATTRITION RATES IN THE USMC.	5. TYPE OF REPORT & PERIOD COVERED TECHNICAL SCIENTIFIC REPT.	
	6. PERFORMING ORG. REPORT NUMBER SERIA - T-389	
7. AUTHOR(s) JOSEPH M./D'AMALIO WALTER M./SEVON, CAPTAIN, USMC	8. CONTRACT OR GRANT NUMBER(s) N00014-75-C-0729	
9. PERFORMING ORGANIZATION NAME AND ADDRESS THE GEORGE WASHINGTON UNIVERSITY PROGRAM IN LOGISTICS WASHINGTON, D. C. 20037	10. PROGRAM ELEMENT, PROJECT, TASK AREA & WORK UNIT NUMBERS	
11. CONTROLLING OFFICE NAME AND ADDRESS OFFICE OF NAVAL RESEARCH CODE 434 ARLINGTON, VIRGINIA 22217	12. REPORT DATE 29 DECEMBER 1978	
	13. NUMBER OF PAGES 95	
14. MONITORING AGENCY NAME & ADDRESS (if different from Controlling Office)	15. SECURITY CLASS. (of this report) NONE	
	15a. DECLASSIFICATION/DOWNGRADING SCHEDULE	
16. DISTRIBUTION STATEMENT (of this Report) APPROVED FOR PUBLIC RELEASE; DISTRIBUTION UNLIMITED.		
17. DISTRIBUTION STATEMENT (of the abstract entered in Block 20, if different from Report)		
18. SUPPLEMENTARY NOTES		
19. KEY WORDS (Continue on reverse side if necessary and identify by block number) ATTRITION RATES LONGITUDINAL DATA BASE MANPOWER DATA BASE STATISTICAL RETRIEVAL SYSTEM/RATE GENERATOR PERSONNEL DATA BASE USMC ATTRITION RATES		
20. ABSTRACT (Continue on reverse side if necessary and identify by block number) The Statistical Retrieval System and Rate Generator (SRS/RG) is an automated data system that has been designed and programmed by the Program in Logistics staff of The George Washington University. The heart of the SRS/RG is a history file that covers the entire Marine Corps. This file is composed of variable length records and each record contains background information on one Marine. The purpose of this paper is to describe an application of the SRS/RG in determining average monthly attrition rates		

DD FORM 1473
1 JAN 73

EDITION OF 1 NOV 65 IS OBSOLETE
S/N 0102-014-6601

NONE

SECURITY CLASSIFICATION OF THIS PAGE (When Data Entered)

405

337

9AC

NONE

SECURITY CLASSIFICATION OF THIS PAGE(When Data Entered)

No. 20 Abstract cont'd

broken down by location, job, and grade. More generally, the SRS/RG can be used to determine essentially any kind of USMC personnel rate.

NONE

SECURITY CLASSIFICATION OF THIS PAGE(When Data Entered)

THE GEORGE WASHINGTON UNIVERSITY
School of Engineering and Applied Science
Institute for Management Science and Engineering
Program in Logistics

Abstract
of
Serial T-389
29 December 1978

AN APPLICATION OF THE SRS/RG IN DETERMINING
ENLISTED ATTRITION RATES IN THE USMC

by

Joseph M. D'Amalio
Captain Walter W. Sevon, USMC

The Statistical Retrieval System and Rate Generator (SRS/RG) is an automated data system that has been designed and programmed by the Program in Logistics staff of The George Washington University. The heart of the SRS/RG is a history file that covers the entire Marine Corps. This file is composed of variable length records and each record contains background information on one Marine. The purpose of this paper is to describe an application of the SRS/RG in determining average monthly attrition rates broken down by location, job, and grade. More generally, the SRS/RG can be used to determine essentially any kind of USMC personnel rate.

ACCESSION for	
NTIS	White Section <input checked="" type="checkbox"/>
DDC	Buff Section <input type="checkbox"/>
UNANNOUNCED	<input type="checkbox"/>
JUSTIFICATION	
BY	
DISTRIBUTION/AVAILABILITY CODES	
Dist.	SPECIAL
A	

THE GEORGE WASHINGTON UNIVERSITY
School of Engineering and Applied Science
Institute for Management Science and Engineering
Program in Logistics

AN APPLICATION OF THE SRS/RG IN DETERMINING
ENLISTED ATTRITION RATES IN THE USMC

by

Joseph M. D'Amalio
Captain Walter W. Sevon, USMC

1. Introduction

The Statistical Retrieval System and Rate Generator (SRS/RG) is an automated data system that has been designed and programmed by the Program in Logistics staff of The George Washington University. This system, installed on the computer at the Headquarters, United States Marine Corps (HQMC) is documented in [1], [2], [3], and [4]. The heart of the SRS/RG is a history file covering the entire Marine Corps; each record contains background information on one Marine. This file construction is unique among manpower data files at HQMC and provides data for analysis unavailable in the past.

Although the SRS/RG can be used to determine almost any personnel rate, the purpose of this paper is to describe its application in determining average monthly attrition rates. The SRS/RG Command Management Manual [3] will give the reader an indication of broader application of the SRS/RG.

A system¹ has been designed to extract the appropriate information from the SRS/RG and compute the attrition rates. The attrition rates focus

¹The program manual for this system may be found in [5].

on Marines leaving the Marine Corps prior to the completion of their first enlistment, namely non-End of Active Service (EAS) attrition. These rates are broken down by location, job, and grade, and are extremely important to the personnel managers at Headquarters Marine Corps responsible for the distribution of enlisted personnel. By having these attrition rates, personnel managers can project the number of personnel at major commands, by job and grade, which require replacement. This allows personnel managers to keep these major commands at constant strength levels. Further, loss rates generated through the SRS/RG similar to the rates described in this paper will be used in the Tour Optimization for Uniform Readiness (TOUR) Model [6]. These rates will allow the TOUR model to project assignments for personnel across the entire Marine Corps.

Prior to the creation of the SRS/RG it was virtually impossible to determine non-EAS attrition rates broken down by location, job, and grade. The Marine Corps Manpower Management System (MMS) is composed of many files which were not structurally designed in a manner suited to the extraction of this information. Headquarters Marine Corps (HQMC) maintains two main types of manpower data files. The first type is cross-sectional in nature to maintain current information on all active Marines. Files of the second type contain update transactions to a Marine's current status. None of these files contain, on a single record, longitudinal information to the extent of that in the SRS/RG and to get such information without the SRS/RG would require the matching of many files in HQMC. Such matching is a very time consuming process and is wasteful of computer resources. Further, when old files have been destroyed, certain information becomes virtually impossible to gather. The SRS/RG has been designed in order to be responsive to inquiries that require longitudinal data and to provide for the preservation of such data. Of course the SRS/RG is not intended to replace cross-sectional files; for example, it is more efficient to use the latter to gather current strength counts.

Population

Non-EAS attrition rates are computed for regular enlisted Marines in grades E1 to E5 who are on their first enlistment. A point in time is selected, called the reference point, and all records on the SRS/RG are examined to determine if the record designates an active Marine on first enlistment at the

reference point. Each record selected then corresponds to a Marine on active duty at the reference point. Once the reference point has been selected, each record is traced through a specific period of interest to determine if there was a non-EAS attrition. The attrition rates presented in Appendix A resulted from selecting a population with a reference point of October 1, 1977 and following the Marines for a period of interest of twelve months. Attrition rates have also been developed using other reference points tracing records from one to twelve months.

At the reference point, each record is examined and the appropriate location, job, and grade are extracted. The location is given in terms of thirteen distinct groups of Primary Monitor Command Codes (PMCC). These groups and their corresponding PMCC are presented in Appendix B. The jobs are in terms of Primary Military Occupational Specialties (PMOS) and the grades are broken into two levels. Level one consists of grades E1 through E3 and level two consists of grades E4 and E5. Once the PMOS and grade level have been examined at the reference point, they are not examined further. However, the location is traced throughout the period of interest.

Methodology

Once the population has been established, each record is examined to determine if there was non-EAS attrition, satisfactory completion of enlistment, or a transfer during the period of interest. With this information monthly non-EAS attrition rates are calculated as follows.

$$\rho = \frac{\sum_{i=1}^n x_i}{\sum_{i=1}^n y_i}$$

where $x_i = 1$ if record i shows non-EAS attrition during period of interest
 $= \emptyset$ if record i did not show such attrition
 $y_i =$ the number of months that record i remained at the specific location
 $n =$ number of records with unique combinations of PMOS, grade level, and location

TABLE 1
 EXTRACTS OF AVERAGE MONTHLY NON-EAS
 ATTRITION RATES FROM APPENDIX A

<u>Location</u>	<u>PMOS</u>	<u>Grade Level</u>	<u>Percent Attrition</u>	<u>N</u>
West Coast FMF	0311	1	2.00	2241
	0311	2	.28	1160
	0811	1	1.68	276
	0811	2	.69	96
	2531	1	1.35	802
	2531	2	.29	377
East Coast FMF	0311	1	1.99	3200
	0311	2	.29	1191
	0811	1	1.34	412
	0811	2	.25	167
	2531	1	1.25	982
	2531	2	.12	524
Far East FMF	0311	1	.91	2432
	0311	2	.05	564
	0811	1	.52	311
	0811	2	0	121
	2531	1	.69	998
	2531	2	.12	247

The ratio ρ is calculated for each unique combination of PMOS, grade level, and location. In the calculation, location is the only variable monitored throughout; the PMOS and grade level are examined only at reference point and at no other time in the period of interest. Therefore, it is possible for an individual to change his PMOS or his grade level but still be counted at his previous PMOS and grade level. This problem can be minimized by choosing a very short period of interest. Ideally, the program would be run for twelve consecutive months with a period of interest of one month each. However, with two grade levels, thirteen location groups, and approximately 300 PMOS's, there would be approximately 7,800 attrition rates per run. It would obviously be unmanageable to review twelve monthly sets of attrition rates. However, personnel managers are quite capable of reviewing four quarterly sets of rates and such sets for a complete year could also give an indication of seasonality.

When it is determined that a Marine satisfactorily completed his enlistment during the period of interest, the record is treated as a transfer. Therefore, the $\sum y_i$ would be equal to the number of months prior to the completion of enlistment, and the subsequent transfer out of the PMCC.

The Separation Codes which appear in Appendix C were used to determine if there was non-EAS attrition, separation for immediate reenlistment, or EAS-attrition.

Results

The average monthly attrition rates for Fiscal Year 1978 are provided in Appendix A. Extracts of these rates are presented in Table 1. The PMOS's presented, 0311, 0811, and 2531, correspond to rifleman, field artillery batteryman, and field radio operator respectively. Note the similarity in attrition rates between the West Coast FMF and the East Coast FMF. As one might expect, the attrition rate of personnel in grades level two, E4's and E5's, is substantially lower than that of grade level one, the E1's through E3's. However, certain dis-similarities are apparent. There appears to be a significant difference in the average monthly rates between the continental United States attrition rates and those of the Far East FMF. Further, there appears to be a significant difference in attrition rates for different PMOS's. This information is extremely useful. When modeling the manpower flows or in

distributing personnel these differences must be taken into account. Likewise, it may be possible to aggregate the East Coast and West Coast together for modeling or assignment purposes and this reduces the number of variables to be considered.

Conclusion

The SRS/RG has proven to be an extremely useful file in providing attrition rates and many other types of information to HQMC. Because of the design of the SRS/RG--a variable length record with historical information on one Marine per record--the file has been more responsive to certain needs of users in HQMC, and more efficient in usage of computer resources, than conventional Manpower data files. The particular application of the SRS/RG in this report, calculating average monthly non-EAS attrition rates, has been useful to HQMC personnel managers and it takes the place of substantial manual effort previously used to estimate these rates.

REFERENCES

- [1] TOMLINSON, ROSS E. (1974). Creating a personnel data base with a time dimension for the Marine Corps. Technical Memorandum Serial TM-65211. Program in Logistics, The George Washington University.
- [2] TEEPLES, THOMAS C. (1976). Draft System Specification: Statistical Retrieval System and Rate Generator. Program in Logistics, The George Washington University.
- [3] TEEPLES, THOMAS C. (1977). Statistical retrieval system and rate generator: command/management manual. Technical Memorandum Serial TM-60418. Program in Logistics, The George Washington University.
- [4] D'AMALIO, JOSEPH M. and THOMAS C. TEEPLES (1978). Statistical retrieval system and rate generator: program manual. Technical Memorandum Serial TM-60423. Program in Logistics, The George Washington University.
- [5] D'AMALIO, JOSEPH M. (1978). An application of the SRS/RG in determining enlisted attrition rates in the USMC: program manual. Technical Memorandum Serial TM-60470. Program in Logistics, The George Washington University.
- [6] DECISION SYSTEMS ASSOCIATES, INC. (1978). Tour Optimization for Uniform Readiness Design Specifications Report dated November 1978.

Appendix A

FY 78 AVERAGE MONTHLY NON-EAS ATTRITION
RATES BY MCC-CODE, MOS, SKILL

FY78 NON-EAS ATTRITION RATES

MCC	PMOS	SKILL	NON-EAS ATTR.	N
0	0	1	.00	7
		2	.00	2
100		1	1.69	173
		2	.00	3
121		1	2.49	39
		2	.56	18
131		1	.87	33
		2	.00	29
151		1	1.42	203
		2	.28	116
161		1	3.22	6
		2	.00	5
182		2	.00	15
231		2	.00	1
300		1	1.49	75
		2	.00	1
311		1	2.07	86
		2	.44	153
331		1	3.84	8
		2	.00	12
341		1	19.04	7
		2	.00	20
351		1	4.28	11
		2	.00	15
400		1	.00	1
431		1	50.00	1
		2	.00	1
441		2	.00	3
451		2	.00	1
800		1	5.40	17
811		1	.00	3
		2	2.49	4
1100		1	.00	4
1121		1	.00	6
		2	.00	3
1141		1	.00	4
		2	.00	6
1161		1	4.34	2
		2	.00	3
1171		2	.00	1
1300		1	.00	13
1316		2	.00	1
1341		1	5.26	2
		2	.00	1
1345		1	.00	5
		2	.00	3
1371		1	1.51	7

FY78 NON-EAS ATTRITION RATES

MCC	PMOS	SKILL	NON-EAS ATTR.	N
U	1371	2	.75	14
	1381	1	.00	1
		2	.00	1
	1411	2	.00	2
	1500	1	.00	2
	1521	1	.00	4
		2	.00	4
	1531	2	.00	1
	1800	1	.00	15
	1811	1	50.00	1
		2	.00	1
	1833	1	9.99	3
		2	.00	2
	2100	1	.00	16
	2111	1	1.96	6
		2	.94	10
	2131	1	.00	1
	2141	1	.00	1
	2142	2	.00	1
	2144	2	.00	1
	2300	1	.00	1
	2311	1	.00	3
		2	.00	14
	2500	1	1.61	68
		2	11.11	1
	2512	1	.57	15
		2	.42	24
	2531	1	.00	11
		2	.00	26
	2532	2	.00	3
	2542	1	1.66	20
		2	.99	11
	2600	1	.00	4
	2621	2	.00	2
	2641	2	.00	1
	2800	1	.00	9
		2	.00	1
	2811	1	.00	1
		2	.00	1
	2814	2	.00	2
	2818	1	5.26	5
		2	.00	2
	2831	2	.00	1
	2841	2	.00	4
	3000	1	1.08	65
		2	.00	1
	3042	1	.00	1

FY78 NON-EAS ATTRITION RATES

MCC	PMOS	SKILL	NON-EAS ATTR.	N
U				
	3042	2	.00	1
	3043	1	2.32	12
		2	.43	26
	3051	1	1.78	41
		2	.22	44
	3061	1	2.64	15
		2	.00	6
	3072	2	.00	14
	3081	1	.00	1
		2	.00	6
	3100	2	.00	1
	3111	1	.00	1
		2	.00	1
	3121	1	14.28	1
		2	2.63	5
	3200	1	.00	1
	3211	1	.00	1
		2	.00	2
	3242	2	.00	1
	3300	1	3.40	27
		2	.00	2
	3311	1	1.59	39
		2	1.49	8
	3371	1	1.42	128
		2	.47	84
	3400	1	.00	1
	3421	1	1.55	19
		2	3.03	5
	3431	1	.00	3
	3451	1	4.25	11
		2	.00	8
	3500	1	.00	31
	3513	1	.00	1
	3521	1	.00	2
		2	.00	5
	3522	2	.00	2
	3531	1	2.27	43
		2	.15	66
	3533	1	5.55	2
		2	.00	7
	3534	1	9.99	1
	3535	1	5.40	6
		2	2.38	4
	4000	1	.78	25
	4014	1	.00	1
	4016	1	.00	2
		2	.00	4

FY78 NON-EAS ATTRITION RATES

MCC	PMOS	SKILL	NON-EAS	ATTR.	N
U	4034	1	2	2.56	4
		2	2	.00	22
	4044	2	2	.00	1
	4063	1	2	7.14	2
		2	2	.00	9
	4100	1	7	1.53	7
	4111	1	1	33.33	1
		2	1	.00	1
	4131	1	5	1.88	5
		2	9	.00	9
	4312	1	7	2.53	7
		2	7	.00	7
	4313	2	1	.00	1
	4400	2	1	.00	1
	4421	1	5	1.69	5
		2	7	1.61	7
	4422	1	2	.00	2
		2	1	.00	1
	4600	2	2	.00	2
	4631	1	3	7.99	3
	4651	2	1	.00	1
	4671	1	2	7.69	2
		2	1	.00	1
	4900	1	11	.00	11
		2	2	.00	2
	4911	1	3	3.33	3
		2	2	.00	2
	4921	1	1	.00	1
		2	2	.00	2
	4931	1	1	.00	1
		2	8	.00	8
	5500	1	12	1.28	12
	5526	2	1	.00	1
	5528	2	1	.00	1
	5534	1	3	.00	3
		2	3	.00	3
	5536	1	2	.00	2
		2	1	.00	1
	5537	1	1	.00	1
		2	4	2.49	4
	5541	1	6	.00	6
		2	7	.00	7
	5544	1	2	.00	2
		2	1	.00	1
	5546	1	4	.00	4
		2	1	.00	1
	5547	1	2	.00	2

FY78 NON-EAS ATTRITION RATES

MCC	PMOS	SKILL	NON-EAS ATTR.	N
0	5547	2	.00	2
	5563	1	6.25	2
	5565	2	.00	2
	5577	1	.00	1
	5593	2	.00	1
	5800	1	.00	1
	5811	2	.00	6
	5812	1	1.17	69
	5821	2	.28	35
	5831	1	.00	1
	5900	2	.00	1
	5921	1	.85	43
	5922	2	.77	30
	5931	1	.00	1
	5945	2	.00	1
	6000	1	2.63	28
	6012	1	.00	1
	6014	2	.00	1
	6015	1	33.33	1
	6022	2	.00	2
	6024	1	.00	1
	6028	2	.00	2
	6042	1	7.14	2
	6052	1	16.66	1
	6054	2	.00	1
	6062	1	.00	3
	6064	2	.00	1
	6071	2	12.50	1
	6075	1	.00	4
	6076	2	.00	1
	6077	2	.00	2
	6082	1	.00	1
	6111	2	.00	1
	6113	1	.00	1
	6124	1	33.33	1
	6125	2	.00	1
	6500	2	11.11	1
		1	.00	2

FY78 NON-EAS ATTRITION RATES

MCC	PMOS	SKILL	NON-EAS ATTR.	N
U	6521	1	11.11	2
		2	.00	1
	6531	2	14.28	2
	6541	2	6.25	2
	6600	1	.00	18
		2	.00	1
	6656	2	.00	1
	6821	2	.00	1
	7000	1	.00	5
	7041	2	2.32	4
	7051	2	.00	2
	7200	1	.00	1
	7232	2	.00	5
	7300	1	.00	2
	7322	2	.00	1
	9900	1	3.13	8349
		2	.00	1
	9970	1	1.30	2512
	9971	1	.00	4
	9973	1	.00	3
	9974	1	.00	1
	9975	1	.38	68
	9979	1	1.74	5211
		2	.00	2
	100	1	.00	5
	121	1	.50	36
		2	.00	23
	131	1	.00	25
		2	.00	21
	141	1	.00	1
	151	1	.19	102
		2	.85	54
	161	1	.62	15
		2	.00	11
	182	2	.00	4
	200	2	.00	1
	231	1	.00	2
		2	.00	6
	251	2	.00	1
	300	1	.97	455
		2	.00	4
	311	1	.84	657
		2	.15	267
	331	1	.96	116
		2	.00	51
	341	1	.48	156

FY78 NON-EAS ATTRITION RATES

MCC	PMOS	SKILL	NON-EAS ATTR.	N
1	341	2	.18	60
	351	1	.68	104
		2	.16	65
	400	1	6.25	2
	431	1	.00	6
		2	1.17	10
	441	1	1.47	8
		2	.00	13
	451	2	.00	3
	800	1	1.15	63
	811	1	1.16	138
		2	.38	27
	844	1	.00	42
		2	.42	24
	846	1	.00	6
		2	.00	3
	847	1	.00	2
		2	.00	1
	848	2	.00	2
	849	1	.00	7
		2	.00	4
	1100	1	.00	2
	1121	1	5.76	6
		2	.00	8
	1141	1	.00	10
		2	1.66	6
	1142	1	.00	2
		2	.00	13
	1161	1	.00	10
		2	.00	6
	1171	1	.00	3
		2	.00	4
	1173	1	.00	3
	1300	1	1.29	85
	1316	1	.00	4
		2	.00	5
	1341	1	.49	19
		2	1.05	13
	1345	1	.00	30
		2	.00	9
	1371	1	.72	68
		2	.00	26
	1381	1	.59	21
		2	.00	8
	1391	1	.66	28
		2	.00	6
	1400	1	.00	2

FY78 NON-EAS ATTRITION RATES

MCC	PMOS	SKILL	NON-EAS ATTR.	N
1	1411	1	.00	2
		2	.00	2
	1421	2	.00	1
	1431	1	.00	1
		2	.00	2
	1521	1	.00	1
		2	.00	1
	1800	1	.00	15
		2	.00	1
	1833	1	.00	72
		2	.38	28
	2100	1	.00	11
	2111	1	.00	7
		2	.00	11
	2131	2	.00	5
	2142	1	.00	11
		2	.72	13
	2161	1	.00	1
		2	.00	4
	2171	1	6.25	2
		2	.00	1
	2311	1	.00	30
		2	.00	11
	2500	1	.51	154
		2	.00	2
	2511	1	.00	1
	2512	1	.54	109
		2	.00	45
	2531	1	.95	187
		2	.20	60
	2532	2	.00	1
	2534	1	.00	4
		2	.00	6
	2542	1	.83	47
		2	.00	31
	2549	2	.00	1
	2811	1	.00	5
		2	.00	9
	2814	2	.00	2
	2818	2	.00	4
	2825	2	.00	1
	2826	2	.00	1
	2828	2	.00	1
	2831	2	.00	1
	2841	1	.00	9
		2	.43	24
	2851	1	.00	1

FY78 NON-EAS ATTRITION RATES

MCC	PMOS	SKILL	NON-EAS ATTR.	N
1	2851	2	.00	2
	2853	2	.00	1
	2871	2	.00	2
	2881	2	.00	3
	3000	1	.78	44
		2	.00	1
	3043	1	.34	77
		2	.29	39
	3051	1	.44	82
		2	.27	35
	3052	1	3.70	3
		2	.00	4
	3061	1	1.11	9
		2	.00	6
	3072	1	.44	20
		2	.21	43
	3081	1	.00	3
		2	.00	1
	3111	1	.00	4
		2	.00	6
	3121	1	.00	3
		2	.00	1
	3200	1	.00	8
	3211	1	.00	8
		2	.00	2
	3241	1	.00	3
		2	14.28	1
	3300	1	1.11	31
	3311	1	1.20	15
		2	.00	11
	3371	1	.84	46
		2	1.05	27
	3421	1	.70	25
		2	.00	7
	3431	1	.00	5
		2	.00	2
	3451	1	1.53	6
		2	.00	3
	3452	2	.00	1
	3500	1	.67	104
		2	.00	2
	3513	1	.00	2
		2	.00	2
	3516	2	.00	1
	3521	1	.95	34
		2	.00	35
	3522	1	.00	15

FY78 NON-EAS ATTRITION RATES

MCC	PMOS	SKILL	NON-EAS ATTR.	N
1	3522	2	.00	6
	3524	1	.00	3
	3531	2	.59	183
	3533	2	.00	69
	3534	1	.00	12
	3535	2	.00	8
		1	.00	4
		2	.00	3
		1	1.29	30
		2	.00	13
	4000	1	.00	2
	4016	1	.00	1
	4034	2	.00	3
	4044	1	.00	3
		2	.00	2
		2	.00	4
	4063	1	.00	1
	4100	2	.00	2
	4111	1	.00	1
		2	.00	4
	4131	1	.00	5
		2	.00	3
	4300	2	.00	1
	4312	2	.00	1
	4313	2	.00	1
	4421	1	.00	1
	4422	2	.92	10
	4631	2	.00	3
	4931	2	.00	1
	5500	2	.00	1
	5526	2	.00	1
	5534	1	.00	2
		2	.00	2
	5537	1	.00	1
		2	.00	1
	5541	1	.00	2
		2	.00	6
	5543	1	.00	1
	5546	1	.00	2
	5547	1	.00	1
		2	.00	1
	5563	1	.00	1
		2	.00	1
	5574	1	.00	2
		2	.00	4

FY78 NON-EAS ATTRITION RATES

MCC	PHOS	SKILL	NON-EAS ATTR.	N
1	5577	1	.00	5
	5593	1	.00	3
	5700	2	.00	2
	5711	2	.00	5
	5800	1	.00	3
	5811	1	.75	36
		2	.00	32
	5812	2	.00	1
	5831	1	.00	8
		2	.00	7
	5931	1	.00	5
		2	.00	8
	5932	2	.00	1
	5942	2	.00	4
	5945	2	.00	5
	5953	2	.00	1
	5955	2	.00	5
	5956	1	.00	2
		2	.00	1
	5957	2	.00	1
	5958	2	.00	7
	5963	1	1.85	3
		2	.00	7
	5964	2	.00	2
	5982	2	.00	1
	6000	2	.00	1
	6011	1	.00	3
	6012	1	.00	1
	6014	1	.43	20
		2	.00	17
	6018	1	.00	1
		2	.00	3
	6022	1	.00	1
		2	.00	1
	6023	2	.00	1
	6024	1	.48	18
		2	.00	15
	6028	1	.00	3
		2	.00	1
	6041	1	.00	1
	6042	1	.45	20
		2	.00	25
	6051	1	.00	3
	6052	1	2.56	4
	6054	1	.00	10
		2	.00	18
	6055	1	3.65	9

FY78 NON-EAS ATTRITION RATES

MCC	PMOS	SKILL	NON-EAS ATTR.	N
1	6055	2	.00	10
	6062	1	1.12	8
	6064	1	.00	10
	6071	2	.00	3
	6072	1	.00	12
	6075	1	.00	1
	6076	2	.00	8
	6077	1	.00	5
	6078	2	.00	6
	6082	1	.00	7
	6111	1	.00	5
	6112	2	.00	6
	6113	1	.55	2
	6114	2	.00	8
	6122	1	.00	4
	6123	2	.00	6
	6125	1	.00	15
	6132	2	.00	11
	6241	1	.00	1
	6500	1	.00	1
	6521	1	1.18	14
	6531	2	.00	17
	6541	1	.47	11
	6600	2	.00	19
	6612	1	.92	14
	6613	2	.00	10
		1	.00	9
		2	.00	1
		3	.00	3
		7	1.56	12
		1	.00	7

FY78 NON-EAS ATTRITION RATES

MCC	PMOS	SKILL	NON-EAS ATTR.	N
1	5614	1	.00	1
		2	.00	3
	6616	1	.00	9
		2	.00	8
	6617	1	.00	3
		2	.00	4
	6618	1	.00	2
		2	.00	3
	6619	1	.00	3
		2	.00	3
	6620	1	.00	3
		2	.00	4
	6621	1	.00	1
		2	.00	5
	6628	1	.00	1
		2	.00	2
	6631	1	.00	1
		2	.00	13
	6632	1	.00	17
		2	.00	2
	6634	1	.00	15
	6636	1	.78	12
		2	.00	13
	6638	1	.00	7
		2	.00	6
	6639	1	.00	5
		2	.00	6
	6657	1	.00	9
		2	.00	3
	6659	1	.00	6
		2	.00	1
	6683	1	.00	5
		2	.00	2
	6821	1	.00	5
		2	.00	7
	7011	1	1.35	14
		2	.00	5
	7041	1	.00	13
		2	.75	26
	7051	1	.72	12
		2	.00	1
	7141	1	.00	2
	7200	1	.00	11
	7234	1	.84	14
		2	.00	2
	7242	1	.00	2
		2	.00	1

FY78 NON-EAS ATTRITION RATES

MCC	PMOS	SKILL	NON-EAS ATTR.	N
1	7300	2	.00	1
	7311	1	.00	3
	7312	2	.00	6
	7322	1	.00	1
		2	.00	3
	9900	1	3.15	10
	9979	1	.00	8
2	0	1	6.25	2
		2	5.66	7
	100	1	1.24	24
		2	.00	1
	121	1	1.12	89
		2	.11	84
	131	1	1.13	75
		2	.54	96
	151	1	1.34	224
		2	.16	135
	161	1	1.31	8
		2	.00	12
	182	2	.00	17
	200	2	.00	2
	231	1	.00	1
		2	.00	21
	241	2	.00	2
	251	2	.00	1
	300	1	1.90	779
		2	1.23	10
	311	1	2.00	2241
		2	.28	1160
	331	1	2.10	347
		2	.21	240
	341	1	1.83	415
		2	.20	238
	351	1	1.85	494
		2	.12	245
	352	1	.00	16
		2	.00	3
	361	1	.81	11
		2	.00	8
	369	2	.00	2
	400	1	1.52	64
		2	.00	2
	431	1	1.60	34
		2	1.80	15
	441	1	2.70	19
		2	1.11	14

FY78 NON-EAS ATTRITION RATES

MCC	PMOS	SKILL	NON-EAS ATTR.	N
2	451	1	3.84	4
		2	.00	11
	800	1	1.72	225
		2	1.61	13
	811	1	1.68	276
		2	.69	96
	842	1	.67	15
		2	.00	10
	844	1	1.32	116
		2	.00	44
	846	1	6.39	19
		2	.00	6
	847	1	.00	14
		2	1.51	7
	848	2	.00	4
	849	1	1.62	31
		2	.00	12
	1100	1	2.94	10
		2	.00	1
	1121	1	.75	39
		2	.00	35
	1141	1	.79	47
		2	.00	37
	1142	1	.44	41
		2	.25	39
	1161	1	1.35	30
		2	.00	18
	1171	1	.88	22
		2	.00	7
	1173	1	2.27	8
		2	.00	1
	1300	1	2.32	102
		2	.00	1
	1316	1	.91	43
		2	1.57	27
	1341	1	1.37	170
		2	.40	58
	1345	1	1.75	157
		2	.36	79
	1371	1	1.05	411
		2	.29	153
	1381	1	1.42	71
		2	.48	28
	1391	1	2.23	107
		2	.00	31
	1400	1	1.42	6
	1411	1	2.70	4

FY78 NON-EAS ATTRITION RATES

MCC	PMOS	SKILL	NON-EAS ATTR.	N
2	1411	2	.00	3
	1421	1	2.58	12
		2	.00	2
	1431	1	.00	1
		2	.00	6
	1500	1	.00	1
		2	.00	1
	1521	1	.00	1
		2	.00	1
	1522	1	.00	1
		2	100.00	1
	1531	1	.00	1
		2	.00	1
	1532	2	.00	1
	1541	2	.00	1
	1800	1	2.58	101
		2	3.84	3
	1811	1	.79	118
		2	.20	52
	1833	1	2.41	221
		2	.64	92
	2100	1	1.21	46
	2111	1	1.71	36
		2	.53	38
	2131	1	.00	8
		2	.97	11
	2141	1	1.39	14
		2	.00	31
	2142	1	.99	61
		2	.41	52
	2144	1	9.99	1
		2	.00	1
	2161	1	4.76	5
		2	.00	10
	2171	1	.00	2
		2	1.14	10
	2300	2	.00	1
	2311	1	1.16	34
		2	.16	68
	2500	1	1.33	463
		2	.00	7
	2502	1	.00	1
	2511	1	.00	5
	2512	1	1.92	234
		2	.24	135
	2513	1	.00	1
		2	.00	2

FY78 NON-EAS ATTRITION RATES

MCC	PIOS	SKILL	NON-EAS	ATTR.	N
2	2531	1	1.35	802	
		2	.29	377	
	2532	1	1.08	29	
		2	.00	19	
	2533	2	.00	1	
	2534	1	.85	25	
		2	.00	15	
	2537	2	.00	1	
	2542	1	1.22	206	
		2	.30	77	
	2549	2	.00	1	
	2600	1	.00	2	
	2621	2	14.28	1	
	2651	1	.00	4	
		2	.00	1	
	2800	1	.47	21	
		2	.00	1	
	2811	1	.00	6	
		2	.20	49	
	2813	1	4.54	2	
		2	.00	8	
	2814	1	.00	1	
		2	.00	10	
	2818	1	.00	15	
		2	.00	18	
	2819	2	.00	1	
	2822	2	.00	2	
	2823	2	.00	1	
	2827	2	.00	1	
	2828	2	.00	3	
	2829	2	.00	3	
	2831	1	.00	4	
		2	.00	39	
	2841	1	.69	13	
		2	.26	119	
	2851	1	3.22	4	
		2	.00	18	
	2853	2	.00	2	
	2871	1	1.99	5	
		2	.00	5	
	2872	2	.00	3	
	2873	2	.00	1	
	2875	1	33.33	1	
		2	.00	6	
	2681	2	.00	12	
	3000	1	2.02	116	
		2	.00	6	

FY78 NON-EAS ATTRITION RATES

MCC	PMOS	SKILL	NON-EAS ATTR.	N
2	3041	1	.00	3
		2	.00	1
	3043	1	1.23	173
		2	.35	130
	3051	1	1.54	201
		2	.55	151
	3052	1	3.42	19
		2	.00	7
	3060	2	.00	1
	3061	1	.00	22
		2	1.20	8
	3071	1	.00	1
	3072	1	1.45	55
		2	.19	105
	3100	1	.00	1
	3111	1	1.65	13
		2	.60	16
	3121	1	.00	1
	3141	1	.00	2
	3200	1	5.08	6
	3211	1	2.04	10
		2	.68	15
	3241	1	.00	10
		2	.00	4
	3300	1	2.30	79
		2	.00	4
	3311	1	.84	73
		2	.44	30
	3371	1	1.47	193
		2	.53	116
	3400	1	2.27	4
		2	.00	1
	3421	1	.23	36
		2	.42	24
	3431	1	2.77	7
		2	.00	4
	3451	1	.00	5
		2	.00	8
	3500	1	1.53	434
		2	1.99	5
	3513	1	.00	2
		2	4.54	2
	3516	1	.00	2
	3521	1	1.21	207
		2	.48	127
	3522	1	1.21	148
		2	.00	49

FY78 NON-EAS ATTRITION RATES

MCC	PMOS	SKILL	NON-EAS ATTR.	N
2	3523	1	.00	2
		2	.00	3
	3524	1	.00	7
		2	.00	9
	3531	1	1.33	656
		2	.32	261
	3533	1	2.26	31
		2	.32	36
	3534	1	2.54	14
		2	.00	10
	3535	1	1.84	81
		2	.39	54
	3537	2	.00	2
	4000	1	.00	9
	4016	1	1.66	6
		2	.00	11
	4034	1	.00	5
		2	.00	8
	4038	2	.00	1
	4044	1	.00	1
		2	.00	7
	4063	2	.00	2
	4100	2	.00	1
	4111	1	.00	2
		2	.00	1
	4131	1	.00	3
		2	.00	8
	4312	1	.00	3
		2	.00	3
	4313	2	.00	1
	4400	1	.00	2
		2	.00	2
	4421	1	4.54	2
		2	.00	8
	4422	1	.00	1
		2	.84	11
	4600	1	.00	1
		2	.00	1
	4631	2	.00	4
	4900	1	14.28	1
	4911	2	.00	1
	4931	2	.00	1
	5500	1	.00	5
		2	.00	1
	5526	1	.00	1
	5534	1	.00	1
		2	.00	4

FY78 NON-EAS ATTRITION RATES

MCC	PHOS	SKILL	NON-EAS ATTR.	N
2	5536	1	.00	1
		2	.00	1
	5537	1	.00	4
		2	.00	1
	5541	1	.00	5
		2	.00	7
	5543	1	.00	1
	5544	1	.00	1
		2	.00	2
	5546	1	3.84	3
		2	.00	5
	5547	1	.00	2
		2	.00	4
	5563	1	.00	1
		2	.00	2
	5565	1	.00	2
	5574	1	2.17	4
		2	.00	2
	5577	2	.00	1
	5593	1	.00	4
		2	.00	1
	5700	1	5.88	3
		2	.00	18
	5711	2	.00	3
	5800	1	.00	6
	5811	1	1.21	69
		2	.48	64
	5831	1	.00	4
		2	.00	1
	5900	1	.00	6
	5921	1	.00	5
		2	.00	6
	5922	1	13.33	2
		2	.00	8
	5923	1	.00	6
		2	.00	10
	5924	2	.00	1
	5929	1	.00	2
		2	.00	8
	5931	1	.00	6
		2	.00	22
	5932	1	.00	1
		2	.00	3
	5933	2	.00	2
	5934	2	.00	1
	5935	2	.00	7
	5943	1	.00	2

FY78 NON-EAS ATTRITION RATES

MCC	PMOS	SKILL	NON-EAS ATTR.	N
2	5943	2	.00	6
	5952	2	.00	4
	5953	2	.00	1
	5954	2	.00	2
	5955	1	.00	5
		2	.00	6
	5956	1	.00	6
		2	.00	7
	5958	2	.00	10
	5962	1	.00	4
		2	.00	1
	5964	1	.00	2
		2	.00	3
	5974	2	.00	1
	5982	1	.00	1
		2	.00	1
	6000	1	.97	32
		2	.00	2
	6011	1	1.76	80
		2	.00	2
	6012	1	.00	11
		2	.00	20
	6013	1	.00	10
		2	.00	6
	6014	1	.58	17
		2	.00	33
	6016	1	.00	2
		2	.00	6
	6022	1	.89	11
		2	.00	22
	6024	1	.00	36
		2	.00	33
	6026	1	.00	7
		2	.00	12
	6028	1	.00	4
		2	.00	2
	6036	1	.00	5
		2	.00	4
	6038	2	.00	2
	6041	1	.00	33
	6042	1	.52	77
		2	.32	68
	6051	1	.62	29
	6052	1	.61	33
		2	.00	22
	6053	1	3.70	3
		2	.00	6

FY78 NON-EAS ATTRITION RATES

MCC	PMOS	SKILL	NON-EAS ATTR.	N
2	6054	1	.53	20
		2	.00	27
	6055	1	.00	15
		2	.00	25
	6061	1	2.38	5
		2	.00	1
	6062	1	.00	20
		2	.00	39
	6064	1	.93	11
		2	.00	22
	6071	1	1.06	24
	6072	1	.00	14
		2	.00	13
	6075	1	1.23	8
		2	.00	15
	6076	1	.00	11
		2	.00	15
	6077	1	.00	11
		2	.00	16
	6078	1	.00	3
		2	.00	6
	6082	1	.97	29
		2	.00	26
	6083	2	.00	2
	6111	1	.74	79
		2	.00	4
	6112	1	1.76	35
		2	.00	27
	6113	1	.60	47
		2	.17	57
	6122	1	.50	18
		2	.00	13
	6123	1	.80	24
		2	.00	16
	6132	1	.00	9
		2	.00	2
	6236	2	.00	1
	6500	1	.86	12
		2	.00	2
	6521	1	.64	18
		2	.00	21
	6531	1	.47	36
		2	.00	45
	6541	1	1.88	37
		2	.00	15
	6600	1	.64	51
		2	.00	10

FY78 NON-EAS ATTRITION RATES

MCC	PMOS	SKILL	NON-EAS ATTR.	N
2	6611	1	.14	80
		2	.00	4
	6612	1	.50	19
		2	1.01	9
	6613	1	1.33	15
		2	.00	8
	6614	1	.78	11
		2	.00	20
	6616	1	.00	21
		2	.00	14
	6617	1	.00	18
		2	.00	17
	6618	1	.00	7
		2	.00	9
	6619	1	.75	12
		2	.00	5
	6620	1	.00	7
		2	.55	21
	6621	1	1.47	30
		2	.00	2
	6625	1	.00	8
		2	.00	6
	6627	1	.00	1
	6628	1	.00	5
		2	.00	6
	6629	1	.00	12
	6631	1	.92	48
		2	.00	2
	6632	1	.38	24
		2	.41	24
	6633	1	.00	10
		2	.00	9
	6634	1	1.29	7
		2	.00	14
	6635	1	.33	27
		2	.40	28
	6637	1	.00	4
		2	.00	14
	6638	1	.00	22
		2	.00	14
	6639	1	.00	16
		2	.00	15
	6641	1	.00	12
	6642	1	.00	1
		2	.00	3
	6643	1	.00	1
		2	.00	5

FY78 NON-EAS ATTRITION RATES

MCC	PNOS	SKILL	NON-EAS ATTR.	N
2	6645	2	.00	1
	6647	2	.00	2
	6652	2	.00	4
	6654	2	.00	4
	6655	2	.00	2
	6656	2	.00	12
	6657	2	.00	1
	6658	1	.00	2
	6672	2	.00	12
	6673	1	.00	14
	6673	1	.00	3
	6673	1	.00	5
	6675	2	.00	11
	6675	1	.89	10
	6682	2	.00	10
	6682	1	.00	8
	6683	2	.00	7
	6683	1	.00	4
	6751	2	.00	12
	6751	1	.00	1
	6753	1	.00	1
	6800	1	100.00	1
	6821	1	1.28	8
	6831	2	1.66	9
	6831	1	.00	2
	7000	2	.00	3
	7000	1	.00	2
	7011	2	14.28	1
	7011	1	1.55	19
	7041	2	.00	26
	7041	1	.28	32
	7051	2	.37	27
	7051	1	.89	24
	7200	2	.00	7
	7212	1	.85	11
	7212	1	1.92	23
	7222	2	.46	22
	7222	1	.80	67
	7234	2	.00	37
	7234	1	.00	3
	7242	2	.00	3
	7242	1	1.90	15
	7300	2	.00	15
	7300	1	.00	2
	7311	2	.00	5
	7311	1	.66	14
	7311	2	.00	1

FY78 NON-EAS ATTRITION RATES

MCC	PMOS	SKILL	NON-EAS ATTR.	N
2	7312	2	.00	5
	7321	2	.00	4
	7322	1	.00	1
		2	.00	9
	7371	1	.00	1
		2	.00	2
	7372	2	.00	3
	7381	1	5.40	4
		2	.00	1
	7382	2	.00	10
	9900	1	.88	30
		2	8.33	1
	9970	1	.00	12
	9979	1	1.02	39
3	0	2	.00	1
	100	1	.53	17
		2	.00	1
	121	1	.99	157
		2	.23	87
	131	1	.70	154
		2	.10	99
	141	1	.00	1
	151	1	1.13	232
		2	.10	205
	161	1	1.15	20
		2	.92	14
	182	2	.00	21
	200	1	.00	1
	231	1	.00	9
		2	.00	23
	251	2	.00	1
	300	1	1.50	894
		2	.00	6
	302	2	.00	1
	311	1	1.99	3200
		2	.29	1191
	331	1	1.88	481
		2	.16	250
	341	1	1.27	765
		2	.14	290
	351	1	1.34	904
		2	.23	354
	352	2	.00	2
	369	2	.00	4
	400	1	1.14	86
		2	.00	4

FY78 NON-EAS ATTRITION RATES

MCC	PHOS	SKILL	NON-EAS ATTR.	N
3	431	1	.57	22
		2	.00	28
	441	1	.44	26
		2	.39	28
	451	1	.00	3
		2	1.13	18
	800	1	.83	425
		2	.69	17
	811	1	1.34	412
		2	.25	167
	842	1	3.33	27
		2	.00	17
	844	1	1.15	117
		2	.12	84
	846	1	1.61	20
		2	.00	11
	847	1	.00	9
		2	.00	4
	848	2	.00	11
	849	1	1.80	39
		2	.00	16
	1100	1	1.69	20
		2	.00	6
	1121	1	2.02	60
		2	.00	38
	1141	1	.52	71
		2	.25	43
	1142	1	.42	50
		2	.55	56
	1161	1	.96	21
		2	.00	34
	1171	1	2.09	32
		2	.00	11
	1173	1	5.99	7
		2	3.70	5
	1300	1	1.49	246
		2	.00	7
	1316	1	1.11	28
		2	.61	22
	1341	1	1.27	177
		2	.13	87
	1345	1	.87	221
		2	.00	77
	1371	1	1.88	543
		2	.25	269
	1381	1	1.35	61
		2	1.25	37

FY78 NON-EAS ATTRITION RATES

MCC	PMOS	SKILL	NON-EAS ATTR.	N
3	1391	1	2.17	152
		2	.20	54
	1400	1	.78	11
	1411	1	.00	4
		2	.00	4
	1421	1	.00	10
		2	.39	26
	1431	1	.00	3
		2	.00	10
	1500	1	33.33	1
	1521	1	.00	1
		2	16.66	1
	1522	1	.00	2
		2	.00	3
	1531	2	.00	2
	1800	1	1.49	192
		2	2.12	5
	1811	1	1.41	203
		2	.12	81
	1833	1	1.78	380
		2	.67	137
	2100	1	1.30	80
		2	.00	1
	2111	1	2.59	76
		2	.55	58
	2131	1	5.37	23
		2	.00	5
	2141	1	.91	33
		2	.00	36
	2142	1	1.36	67
		2	.33	64
	2144	1	1.08	19
		2	.00	24
	2151	1	.00	3
	2161	1	2.12	5
		2	.81	13
	2171	1	.00	5
		2	.00	4
	2300	1	3.22	3
		2	.00	1
	2311	1	.85	141
		2	.29	71
	2336	2	.00	2
	2500	1	1.00	547
		2	4.34	5
	2502	2	.00	1
	2511	1	3.77	8

FY78 NON-EAS ATTRITION RATES

MCC	PMOS	SKILL	NON-EAS ATTR.	N
3	2511	2	.00	4
	2512	1	1.40	359
		2	.38	166
	2513	1	7.69	4
		2	.00	2
	2519	2	.00	1
	2531	1	1.25	982
		2	.12	524
	2532	1	1.35	27
		2	.39	30
	2533	2	.00	2
	2534	1	.60	36
		2	.00	13
	2537	2	.00	1
	2542	1	.91	223
		2	.20	112
	2549	2	.00	3
	2600	1	.00	3
	2632	1	.00	1
		2	.00	1
	2651	1	.00	4
		2	.00	5
	2800	1	2.22	5
		2	.00	2
	2811	1	1.33	16
		2	.39	52
	2813	1	.00	5
		2	.00	8
	2814	1	.00	2
		2	.00	15
	2818	1	.93	10
		2	.00	17
	2819	2	.00	5
	2822	2	33.33	1
	2828	2	.00	3
	2839	2	.00	4
	2831	1	.00	4
		2	.34	28
	2841	1	.86	51
		2	.19	154
	2851	1	1.53	6
		2	.00	18
	2853	2	.00	5
	2871	1	.00	1
		2	1.23	8
	2872	2	.00	3
	2875	1	.00	12

FY78 NON-EAS ATTRITION RATES

MCC	PHOS	SKILL	NON-EAS ATTR.	N
3	2875	2	.81	12
	2881	1	.00	2
		2	.00	15
	2882	2	.00	1
	3000	1	1.09	269
		2	.00	8
	3041	1	.00	2
	3042	2	.00	1
	3043	1	1.32	211
		2	.24	183
	3051	1	2.06	376
		2	.51	239
	3052	1	2.17	39
		2	.00	14
	3061	1	1.07	18
		2	.00	8
	3071	1	.00	2
	3072	1	1.17	130
		2	.18	168
	3081	2	.00	1
	3100	1	1.37	15
		2	.00	1
	3111	1	.38	31
		2	.00	20
	3121	1	5.26	2
		2	.00	3
	3200	1	1.83	13
	3211	1	1.34	27
		2	.75	15
	3241	1	.94	10
		2	.00	6
	3300	1	1.79	164
	3311	1	2.19	67
		2	.35	36
	3371	1	2.14	280
		2	.25	129
	3400	1	.48	19
		2	.00	1
	3421	1	.96	41
		2	.00	47
	3431	1	.96	9
		2	.00	6
	3451	1	.00	4
		2	1.36	7
	3452	2	.00	1
	3500	1	1.39	683
		2	.00	10

FY78 NON-EAS ATTRITION RATES

MCC	PHOS	SKILL	NON-EAS ATTR.	N
3	3513	1	5.40	7
		2	4.76	4
	3516	1	.00	5
		2	.00	1
	3521	1	2.08	306
		2	.14	147
	3522	1	1.08	122
		2	.00	56
	3523	1	.00	1
		2	.00	4
	3524	1	.00	6
		2	.00	7
	3531	1	1.52	767
		2	.16	399
	3533	1	1.35	45
		2	.00	39
	3534	1	2.30	15
		2	.00	21
	3535	1	1.91	119
		2	.64	49
	4000	1	.00	9
	4013	1	.00	1
	4016	1	4.16	5
		2	.00	14
	4034	1	.00	5
		2	.00	9
	4044	1	.00	4
		2	.00	20
	4063	1	.00	1
		2	.00	2
	4100	1	.00	1
	4111	1	.00	3
	4131	1	.00	1
		2	.00	4
	4300	1	.00	1
		2	.00	2
	4312	1	.00	1
		2	.00	4
	4313	1	.00	1
	4421	1	.87	13
		2	1.13	9
	4422	1	.79	12
		2	1.48	15
	4423	2	.00	1
	4424	2	.00	1
	4600	1	3.44	3
		2	.00	2

FY78 NON-EAS ATTRITION RATES

MCC	PMOS	SKILL	NON-EAS ATTR.	N
3	4631	1	.00	2
		2	.00	8
	4632	2	.00	1
	4671	1	.00	2
	5500	1	3.06	10
		2	.00	4
	5534	1	.00	3
		2	.00	4
	5537	1	5.88	2
		2	.00	5
	5541	1	.00	4
		2	.00	8
	5543	1	.00	1
		2	.00	1
	5544	2	.00	1
	5546	1	.00	2
		2	.00	3
	5547	1	.00	1
		2	.00	4
	5563	1	2.85	4
		2	.00	2
	5565	2	.00	1
	5574	1	.00	6
	5577	1	.00	5
		2	.00	1
	5593	1	.00	3
		2	.00	1
	5700	1	.00	4
		2	.00	33
	5711	1	.00	1
		2	.00	7
	5800	1	.00	5
		2	.00	1
	5811	1	.79	82
		2	.00	61
	5821	2	.00	1
	5831	1	1.78	6
		2	.00	7
	5900	1	.00	3
		2	.00	3
	5921	1	.00	2
		2	.00	9
	5922	1	.00	2
		2	.00	4
	5923	1	.00	9
		2	.00	9
	5925	2	.00	2

FY78 NON-EAS ATTRITION RATES

MCC	PMOS	SKILL	NON-EAS ATTR.	N
3	5929	1	.00	1
		2	.00	5
	5931	1	1.04	9
		2	.00	31
	5932	1	.00	2
		2	.00	6
	5933	1	.00	1
		2	.00	4
	5935	1	5.55	2
		2	.00	4
	5942	1	.00	1
		2	.00	4
	5943	1	.00	1
		2	.00	11
	5945	2	.00	9
	5955	2	.00	5
	5956	1	.00	2
		2	.00	6
	5958	2	.00	2
	5962	1	.00	4
		2	.00	1
	5963	1	2.49	9
		2	.00	9
	5964	1	.00	2
		2	.00	7
	5977	2	.00	1
	5982	1	.00	1
		2	.00	7
	6000	1	.56	74
		2	.00	2
	6011	1	.75	82
		2	.00	1
	6012	1	.51	18
		2	.00	14
	6013	1	1.06	38
		2	.43	52
	6014	1	.54	35
		2	.26	43
	6015	1	.76	26
		2	.36	30
	6016	1	7.14	4
		2	.00	7
	6018	1	.00	5
		2	.00	4
	6021	1	.00	1
	6022	1	.37	26
		2	.00	32

FY78 NON-EAS ATTRITION RATES

MCC	PNOS	SKILL	NON-EAS ATTR.	N
3	6023	1	.00	5
		2	1.16	8
	6024	1	.00	35
		2	.00	38
	6025	1	.00	23
		2	.00	16
	6026	1	1.73	11
		2	.00	4
	6027	2	.00	1
	6028	1	.00	4
		2	.00	11
	6029	2	.00	1
	6036	1	.00	2
		2	.00	5
	6041	1	.78	67
	6042	1	.80	154
		2	.35	97
	6051	1	.79	48
		2	.00	1
	6052	1	1.26	39
		2	.00	29
	6053	1	.36	23
		2	.55	20
	6054	1	.48	37
		2	.00	30
	6055	1	.55	20
		2	.00	42
	6061	1	.00	12
	6062	1	.73	55
		2	.46	68
	6064	1	.60	35
		2	.00	50
	6068	1	.00	1
	6071	1	.31	36
		2	.00	3
	6072	1	.80	26
		2	.00	33
	6075	1	.00	25
		2	.00	22
	6076	1	1.02	19
		2	.92	38
	6077	1	1.05	21
		2	.22	43
	6078	1	1.88	7
		2	.00	8
	6082	1	.73	50
		2	.00	59

FY78 NON-EAS ATTRITION RATES

MCC	PHOS	SKILL	NON-EAS	ATTR.	N
3	6111	1		.87	98
	6112	1		.50	76
	6113	2		.00	55
	6113	1		.83	93
	6114	2		.22	48
	6114	1		.81	23
	6114	2		1.27	21
	6121	1		.00	5
	6122	1		.37	26
	6123	2		.79	29
	6123	1		.39	25
	6125	2		1.88	13
	6131	1		.74	13
	6131	2		.00	9
	6132	1		1.92	7
	6132	2		1.14	10
	6234	2		.93	14
	6251	1		.00	1
	6500	1		.00	1
	6500	2		1.16	9
	6521	1		.00	1
	6521	2		1.10	37
	6531	1		.00	45
	6531	2		.41	132
	6541	1		.16	114
	6541	2		.58	87
	6600	1		.00	31
	6600	2		.64	58
	6611	1		.39	29
	6611	2		.67	81
	6612	1		.00	7
	6612	2		.00	32
	6613	1		.26	41
	6613	2		.90	13
	6614	1		.00	12
	6614	2		.85	34
	6615	1		.00	33
	6615	2		3.07	8
	6616	1		.00	15
	6616	2		.00	35
	6617	1		.00	18
	6617	2		.00	29
	6618	1		.00	28
	6618	2		.53	18
	6619	1		.00	10
	6619	2		.00	6

FY78 NON-EAS ATTRITION RATES

MCC	PMOS	SKILL	NON-EAS ATTR.	N
3	6620	1	.53	39
		2	.47	21
	6621	1	.57	34
		2	.00	2
	6623	1	.00	1
		2	.00	8
	6624	1	.00	1
		2	.00	8
	6625	1	.00	1
	6626	2	.00	3
	6627	1	.00	6
		2	.00	5
	6628	1	.00	3
		2	.00	13
	6631	1	.00	57
	6632	1	.49	38
		2	.62	46
	6633	1	1.16	16
		2	.00	11
	6634	1	.44	20
		2	.00	6
	6635	1	.56	15
		2	.00	11
	6636	1	.36	25
		2	.00	18
	6637	1	.00	14
		2	.00	35
	6638	1	.59	32
		2	.39	49
	6639	1	.32	27
		2	.52	39
	6641	1	.00	1
		2	.00	10
	6642	1	2.63	4
		2	1.11	25
	6643	1	.00	2
		2	.00	3
	6644	1	.00	14
		2	.00	8
	6645	2	.00	3
	6646	1	.00	15
		2	.00	9
	6647	1	.00	2
		2	.00	9
	6648	1	.00	2
		2	.00	5
	6652	2	.00	1

FY78 NON-EAS ATTRITION RATES

MCC	PMOS	SKILL	NON-EAS ATTR.	N
3	6654	2	.00	10
	6655	2	.00	4
	6656	1	.00	1
	6657	1	.00	12
		2	.00	33
	6659	1	.00	1
		2	.00	16
	6675	1	.00	5
		2	.00	1
	6682	1	.00	10
		2	.00	15
	6683	1	.00	2
		2	.00	26
	6821	1	.00	28
		2	.00	8
	6831	1	.00	5
	7000	1	.00	2
	7011	1	.30	50
		2	.23	41
	7041	1	.00	40
		2	.16	60
	7051	1	.96	77
		2	.35	30
	7141	1	.00	1
	7200	1	.00	3
	7212	1	.41	21
		2	.00	26
	7222	1	.42	62
		2	.00	46
	7231	1	.00	1
	7234	1	.91	25
		2	.00	25
	7236	2	.00	2
	7242	1	1.32	23
		2	.00	20
	7300	1	.00	16
		2	.00	1
	7311	1	.00	2
	7312	2	.00	3
	7322	2	.00	6
	7371	1	.00	2
		2	.00	2
	7372	1	.00	1
	7381	1	.00	3
	7382	1	.00	1
		2	.00	8
	8621	1	.00	1

FY78 NON-EAS ATTRITION RATES

MCC	PHOS	SKILL	NON-EAS ATTR.	N
3	9900	1	4.22	10
	9973	2	100.00	1
	9979	1	.00	1
	9979	1	.00	4
4	100	1	2.77	6
		2	.00	1
	121	1	.59	117
		2	.00	19
	131	1	.41	104
		2	.00	34
	151	1	.58	295
		2	.16	95
	161	1	.93	46
		2	.00	20
	182	2	.00	8
	231	1	.00	6
		2	.91	12
	241	2	.00	1
	300	1	.40	55
		2	.00	1
	311	1	.91	2432
		2	.05	564
	331	1	.58	305
		2	.30	98
	341	1	.32	400
		2	.09	145
	351	1	.63	471
		2	.00	84
	361	2	.00	4
	369	2	.00	1
	400	1	.00	6
	431	1	.35	28
		2	.00	26
	441	1	.56	19
		2	.44	27
	451	1	.00	3
		2	.00	9
	800	1	.00	7
	811	1	.52	311
		2	.00	121
	842	1	.00	14
		2	.00	7
	844	1	.43	107
		2	.34	45
	846	1	1.03	14
		2	.00	12

FY78 NON-EAS ATTRITION RATES

MCC PHOS	SKILL	NON-EAS ATTR.	N
4			
847	1	.00	10
	2	.00	2
848	2	.00	2
849	1	.00	17
	2	.00	10
1100	1	.00	6
1121	1	.62	59
	2	.00	12
1141	1	.79	77
	2	.00	27
1142	1	.51	54
	2	.00	26
1161	1	.25	44
	2	.00	13
1171	1	.84	23
	2	.00	10
1173	1	.00	10
	2	.00	2
1300	1	.50	43
	2	.00	2
1316	1	.55	48
	2	.00	8
1341	1	.40	163
	2	.00	37
1345	1	.43	155
	2	.00	23
1371	1	.64	410
	2	.23	112
1381	1	.67	72
	2	.00	37
1391	1	.43	88
	2	.00	36
1400	1	.00	7
	2	.00	1
1411	1	2.12	7
	2	.00	1
1421	1	.00	9
	2	.00	1
1431	1	.00	5
	2	.00	2
1500	1	.00	2
1521	1	.00	2
	2	.00	2
1531	1	.00	1
1532	2	.00	1
1800	1	1.17	10
1811	1	.95	70

FY78 NON-EAS ATTRITION RATES

MCC	PMOS	SKILL	NON-EAS ATTR.	N
4	1811	2	.29	43
	1833	1	.68	236
		2	.18	95
	2100	1	.00	43
		2	.00	2
	2111	1	.28	46
		2	.00	34
	2131	1	1.26	13
		2	.00	10
	2141	1	.90	18
		2	.00	19
	2142	1	.00	32
		2	.00	44
	2144	1	1.35	9
		2	.00	7
	2151	2	.00	2
	2161	1	.00	3
		2	.76	15
	2171	1	.00	4
		2	.00	7
	2300	1	.00	1
	2311	1	.20	190
		2	.00	67
	2500	1	.80	77
		2	.00	6
	2502	1	.00	1
	2511	1	.00	5
	2512	1	.52	355
		2	.25	131
	2531	1	.69	998
		2	.12	247
	2532	1	.53	40
		2	.00	24
	2534	1	.00	45
		2	.00	11
	2537	2	.00	2
	2542	1	.62	268
		2	.00	74
	2549	2	.00	2
	2651	1	.00	7
		2	.00	7
	2800	1	.00	3
	2811	1	.34	32
		2	.00	40
	2813	1	.00	7
		2	.00	12
	2814	1	.00	4

FY78 NON-EAS ATTRITION RATES

MCC	PMOS	SKILL	NON-EAS ATTR.	N
4	2814	2	.00	11
	2818	1	1.07	11
		2	.00	25
	2819	2	.00	2
	2822	2	.00	2
	2826	1	.00	3
		2	.00	5
	2838	2	.00	4
	2831	1	1.26	14
		2	.00	29
	2841	1	1.28	33
		2	.00	96
	2851	1	.00	6
		2	.00	20
	2853	2	.00	4
	2871	1	.00	1
		2	.00	5
	2872	2	.00	4
	2875	1	.00	2
		2	.00	3
	2881	1	.00	1
		2	.00	11
	3000	1	.89	36
	3041	1	.00	1
	3042	1	.00	1
	3043	1	.55	293
		2	.00	115
	3051	1	.61	441
		2	.09	145
	3052	1	.20	50
		2	.00	18
	3061	1	.00	28
		2	.00	10
	3072	1	.32	104
		2	.11	129
	3073	2	.00	1
	3081	1	.00	4
		2	.00	6
	3100	1	.00	10
	3111	1	.56	80
		2	.00	37
	3121	1	.87	11
		2	.70	15
	3141	1	1.78	5
		2	.00	4
	3200	1	.00	1
	3211	1	.70	19

FY78 NON-EAS ATTRITION RATES

MCC	PMCS	SKILL	NON-EAS ATTR.	N
4	3211	2	.00	5
	3241	1	.00	9
		2	.00	6
	3300	1	.00	7
	3311	1	.86	69
		2	.00	22
	3371	1	.40	278
		2	.15	90
	3421	1	.40	91
		2	.00	22
	3431	1	.00	20
		2	.00	4
	3451	1	.00	14
		2	.00	9
	3500	1	1.02	82
	3513	1	.00	13
		2	.00	5
	3516	1	3.44	5
		2	.00	2
	3521	1	.31	311
		2	.00	77
	3522	1	.12	111
		2	.00	42
	3523	1	.00	1
	3524	1	.00	7
		2	.00	5
	3531	1	.57	888
		2	.10	275
	3533	1	.79	50
		2	.00	43
	3534	1	.00	9
		2	.00	18
	3535	1	.91	109
		2	.00	21
	4000	1	.57	16
		2	.00	1
	4016	1	.00	16
		2	.00	14
	4034	1	.00	11
		2	.00	20
	4038	2	.00	2
	4044	1	4.54	3
		2	.00	11
	4063	1	.00	3
		2	.00	13
	4100	1	.00	1
	4111	1	.00	2

FY78 NON-EAS ATTRITION RATES

BCC	PMOS	SKILL	NON-EAS ATTR.	N
4	4131	1	.00	9
		2	.00	6
	4132	2	.00	1
	4312	1	.00	1
		2	.00	6
	4400	2	7.69	2
	4421	1	.00	7
		2	.00	3
	4422	1	.00	10
		2	.00	6
	4423	2	.00	1
	4631	1	4.16	5
		2	.00	12
	4671	2	.00	1
	4911	2	.00	1
	4931	1	.00	1
		2	.00	2
	5534	1	.00	3
		2	.00	2
	5536	2	.00	1
	5537	1	.00	3
		2	.00	4
	5541	1	.00	8
		2	.00	6
	5543	1	.00	2
		2	.00	1
	5544	1	.00	1
		2	.00	3
	5546	1	.00	4
		2	.00	3
	5547	1	.00	2
		2	.00	2
	5563	1	.00	1
		2	.00	2
	5700	2	.00	1
	5711	2	.00	4
	5800	1	9.99	2
		2	.00	1
	5811	1	.37	135
		2	.00	93
	5812	1	.00	6
		2	.00	3
	5831	1	.37	35
		2	.00	47
	5900	1	.00	2
	5931	1	.00	6
		2	.00	16

FY78 NON-EAS ATTRITION RATES

MCC	PMOS	SKILL	NON-EAS ATTR.	N
4	5932	1	.00	1
		2	.00	6
	5933	2	.00	1
	5935	1	.00	2
		2	.00	3
	5943	2	.00	12
	5945	1	.00	1
		2	.00	4
	5953	2	.00	2
	5954	2	.00	4
	5955	1	.00	4
		2	.00	8
	5956	1	.00	18
		2	.00	6
	5957	2	.00	12
	5958	2	.00	8
	5963	1	.00	17
		2	.00	3
	5964	1	.00	5
		2	.00	1
	5982	2	.00	4
	6000	2	.00	3
	6011	1	.00	1
		2	.00	1
	6012	1	.00	3
		2	.00	5
	6013	1	.00	2
		2	.00	4
	6014	1	.00	4
		2	.00	4
	6015	2	.00	1
	6016	1	.00	1
		2	.00	7
	6018	2	.00	2
	6022	1	.00	2
		2	.00	8
	6023	2	.00	1
	6024	1	.00	4
		2	.00	5
	6025	2	.00	1
	6026	1	.00	4
		2	.00	15
	6028	1	.00	9
		2	.00	13
	6036	2	.00	7
	6041	1	.00	1
	6042	1	.45	34

FY78 NON-EAS ATTRITION RATES

MCC	PHOS	SKILL	NON-EAS	ATTR.	N
4	6042	2		.00	31
	6051	1		.00	1
	6052	1		.00	18
	6053	2		.00	15
	6053	1		.00	1
	6054	2		.00	4
	6054	1		4.16	3
	6055	2		.00	5
	6055	1		.00	16
	6061	2		.00	19
	6062	1		.00	2
	6062	1		1.09	11
	6064	2		.00	14
	6064	1		1.33	12
	6071	2		1.81	10
	6072	1		.00	3
	6072	1		.93	12
	6072	2		.00	14
	6075	1		1.44	8
	6076	2		.00	11
	6076	1		.00	7
	6077	2		.00	7
	6077	1		.00	10
	6078	2		.00	15
	6078	1		.00	1
	6082	2		.00	9
	6082	1		.00	30
	6083	2		.00	15
	6111	2		.00	2
	6111	1		.00	1
	6112	1		2.49	16
	6113	2		.90	23
	6113	1		.00	16
	6114	2		.00	24
	6114	1		.00	7
	6122	2		.00	10
	6122	1		.00	10
	6123	2		.00	13
	6123	1		.00	8
	6125	2		.00	11
	6125	1		.00	5
	6132	2		.00	3
	6132	1		.00	2
	6500	2		.00	10
	6521	1		.00	1
	6521	1		.47	28
	6521	2		.00	24

FY78 NON-EAS ATTRITION RATES

MCC	PMOS	SKILL	NON-EAS ATTR.	N
4	5531	1	.00	16
		2	.00	25
	5541	1	.00	9
		2	.00	17
	5600	2	.00	1
	5611	1	.00	1
		2	.00	3
	5612	1	.00	10
		2	.00	18
	5613	1	.00	4
		2	.00	15
	5614	1	.00	2
		2	.00	3
	5616	2	.00	3
	5617	1	.00	7
		2	.00	9
	5618	1	.00	3
		2	.00	5
	5619	1	.00	2
		2	.00	7
	5620	1	.00	8
		2	.00	6
	5621	1	.00	2
	5623	2	.00	1
	5628	1	.00	1
		2	.00	1
	5631	2	.00	1
	5632	1	2.15	10
		2	.00	10
	5633	1	.00	10
		2	.00	13
	5634	1	.00	3
		2	.00	2
	5636	1	.00	4
		2	.00	1
	5637	2	.00	4
	5638	1	.00	5
		2	1.03	15
	5639	1	.00	4
		2	.00	6
	5642	1	.00	1
		2	.00	3
	5648	2	.00	1
	5653	2	.00	1
	5654	2	.00	2
	5655	2	.00	1
	5657	1	.00	4

FY78 NON-EAS ATTRITION RATES

MCC	PMOS	SKILL	NON-EAS ATTR.	N
4	6657	2	.00	6
	6659	2	.00	3
	6675	1	.00	1
	6682	2	.00	2
		5	.00	5
	6683	1	.00	2
		16	.00	16
	6722	2	.00	1
	6821	1	.00	15
		2	.00	5
	6831	1	.00	8
		2	.00	4
	7011	1	.00	52
		2	.00	17
	7041	1	.32	37
		2	.45	34
	7051	1	.72	62
		2	.00	24
	7212	1	.00	21
		2	.67	15
	7234	1	.00	18
		2	.00	17
	7242	1	.78	15
		2	.00	16
	7300	2	.00	3
	7311	1	.00	1
	7312	1	.00	1
		2	.00	11
	7322	1	.00	1
		2	.00	19
	7371	2	.00	3
	7372	2	.00	7
	7381	1	.00	1
	7382	1	.00	1
		2	.00	14
	9900	1	8.33	2
	9979	1	.00	2
5	100	1	2.43	4
	121	1	1.17	23
		2	.00	8
	131	1	1.11	17
		2	.00	14
	151	1	.78	74
		2	.00	36
	161	2	.00	2
	182	2	.00	1

FY78 NON-EAS ATTRITION RATES

MCC	PHOS	SKILL	NON-EAS ATTR.	N
5	300	1	2.00	46
		2	.00	1
	311	1	1.14	1485
		2	.32	286
	331	1	.71	265
		2	.25	47
	341	1	1.24	248
		2	.56	42
	351	1	1.15	418
		2	.17	65
	369	2	.00	1
	431	2	.00	1
	441	1	6.45	3
		2	.00	1
	800	1	7.69	3
	811	1	6.66	11
		2	.00	5
	842	1	8.33	1
		2	.00	1
	844	1	.00	3
		2	.00	1
	846	2	.00	1
	847	1	.00	1
	849	2	.00	1
	1121	1	.00	2
		2	.00	6
	1141	1	.00	2
		2	.00	5
	1142	2	.00	1
	1161	1	.00	3
		2	.00	2
	1171	1	50.00	1
	1300	1	.00	3
	1316	1	.00	1
		2	.00	1
	1341	1	5.26	3
		2	.00	2
	1345	1	3.84	3
		2	.00	2
	1371	1	2.75	14
		2	1.29	20
	1391	1	9.09	5
		2	1.75	6
	1400	1	.00	1
	1521	1	.00	2
		2	.00	1
	1800	1	.00	1

FY78 NON-EAS ATTRITION RATES

MCC	PMOS	SKILL	NON-EAS ATTR.	N
5	1811	1	2.32	5
	1833	1	100.00	1
		2	.00	2
	2100	1	.00	4
	2111	1	2.85	8
		2	.00	19
	2141	2	.00	1
	2142	2	.00	1
	2144	2	.00	1
	2161	2	.00	1
	2311	1	4.99	2
		2	2.04	6
	2500	1	4.08	5
		2	.00	1
	2511	1	.00	1
	2512	1	1.31	8
		2	.00	9
	2531	1	3.12	16
		2	.65	18
	2532	2	.00	2
	2542	1	6.25	2
	2800	1	.00	1
	2811	1	.00	1
	2818	1	.00	10
	2841	2	16.66	2
	3000	1	.00	3
		2	.00	1
	3043	1	4.68	14
		2	.48	22
	3051	1	1.36	25
		2	.61	19
	3052	2	.00	1
	3061	1	.00	3
	3072	1	2.49	6
		2	.00	7
	3081	1	9.09	2
		2	.00	2
	3100	2	.00	1
	3111	1	4.34	4
	3300	1	.00	5
	3311	1	9.99	2
		2	.00	2
	3371	1	2.36	46
		2	.00	29
	3421	1	50.00	1
	3451	1	3.22	4
		2	.00	2

FY78 NON-EAS ATTRITION RATES

MCC	POS	SKILL	NON-EAS ATTR.	N
5	3500	1	6.66	4
	3513	2	.00	2
	3521	1	3.70	3
	3531	1	2.71	39
		2	.30	34
	3533	1	9.52	3
		2	.00	2
	3535	1	6.66	8
		2	.00	8
	4016	1	.00	1
		2	.00	4
	4034	1	.00	1
		2	.00	4
	4044	2	.00	2
	4063	2	.00	2
	4100	1	.00	1
	4111	1	.00	2
		2	.00	1
	4131	2	.00	3
	4300	1	.00	1
	4312	1	.00	1
		2	.00	1
	4421	1	1.35	8
		2	.00	6
	4631	1	.00	1
		2	.00	1
	4911	2	.00	1
	4921	2	.00	1
	4931	1	.00	1
		2	.00	1
	5574	1	.00	12
		2	.00	4
	5577	1	.00	8
		2	.00	6
	5593	1	.00	4
		2	.00	6
	5700	2	.00	1
	5800	1	.00	1
	5811	1	4.76	3
		2	1.40	8
	5831	1	.92	50
		2	.00	40
	5900	2	.00	2
	5943	2	.00	1
	6000	1	.00	1
	6012	1	.00	1
	6013	1	.00	1

FY78 NON-EAS ATTRITION RATES

MCC	PMOS	SKILL	NON-EAS ATTR.	N
5	6014	1	5.26	2
		2	.00	1
	6015	2	.00	3
	6016	2	.00	1
	6025	2	.00	1
	6042	1	.00	1
		2	.00	4
	6052	1	.00	1
	6055	1	.00	1
		2	100.00	1
	6062	2	.00	1
	6064	1	33.33	2
		2	.00	3
	6072	1	9.99	1
	6075	1	.00	1
		2	.00	2
	6077	1	.00	1
	6078	1	16.66	1
	6082	1	25.00	1
		2	.00	2
		2	.00	1
	6113	2	.00	1
	6114	2	100.00	1
	6124	1	.00	1
	6521	1	.00	4
		2	.00	3
	6531	2	6.66	2
	6600	1	2.70	12
	6632	1	14.28	1
	6634	2	50.00	1
	6639	1	9.09	1
	6647	2	.00	1
	6682	1	.00	1
	7000	1	.00	1
	7011	1	7.69	2
	7041	1	.00	2
		2	.00	3
	7051	1	.00	1
		2	.00	1
	7212	1	.00	1
	7222	1	.00	1
	7234	2	.00	2
	7242	2	.00	3
	9900	1	36.36	5
	9970	1	.00	1
	9979	1	26.66	5
6	121	1	.91	11

FY78 NON-EAS ATTRITION RATES

MCC	PROS	SKILL	NON-EAS	ATTR.	N
6	121	2	.00	1	
	131	1	.00	10	
	151	2	.00	3	
	161	1	.86	35	
	231	2	.00	8	
	300	2	.00	1	
	311	1	1.30	33	
	331	2	.00	2	
	341	1	.74	870	
	351	2	.00	88	
	441	1	.40	154	
	451	2	.00	15	
	811	1	.66	155	
	844	2	.00	15	
	1121	1	1.02	302	
	1141	2	.00	21	
	1161	1	.00	1	
	1300	2	.00	1	
	1341	1	.00	1	
	1345	1	.00	1	
	1371	1	.00	1	
	1391	2	.00	2	
	1811	1	.00	1	
	1833	1	.00	1	
	2100	2	.00	1	
	2111	1	.00	3	
	2171	2	.00	6	
	2512	1	.00	1	
	2531	2	.00	2	
	2549	1	.00	1	
	3043	2	2.56	6	
	3051	2	.00	1	
		1	2.40	5	
				8	

FY78 NON-EAS ATTRITION RATES

MCC	PMOS	SKILL	NON-EAS ATTR.	N
6	3051	2	.00	5
	3072	2	.00	1
	3300	1	.00	2
	3371	1	2.70	13
		2	.00	16
	3421	2	.00	1
	3500	1	25.00	1
	3522	1	.00	1
	3531	1	1.69	6
		2	.00	9
	3533	1	.00	2
	3535	1	7.69	2
		2	.00	2
	4000	1	.00	1
	4100	1	.00	1
	4111	2	.00	1
	4131	1	.00	1
		2	.00	1
	4312	1	.00	2
	4313	2	.00	3
	4421	1	.00	3
		2	.00	3
	4432	1	.00	1
	4931	2	.00	1
	5800	2	.00	1
	5811	2	.00	4
	5831	1	.00	7
		2	.00	14
	5958	2	19.99	1
	6014	2	.00	1
	6015	2	.00	1
	6022	1	.00	1
	6042	2	16.66	2
	6062	1	.00	1
	6064	1	.00	1
	6077	1	.00	1
	6082	2	.00	1
	6122	2	.00	1
	6521	2	.00	1
	6531	2	.00	1
	6541	1	25.00	1
	7011	2	.00	1
	7051	2	.00	2
		1	.00	3
	121	1	5.55	2
	131	1	.00	1
		2	.00	1

FY78 NON-EAS ATTRITION RATES

MCC	PMOS	SKILL	NON-EAS ATTR.	N
7	151	1	.00	6
	161	1	.00	1
	300	1	.00	2
	311	1	.43	173
		2	.00	20
	331	1	.00	41
		2	.00	3
	341	1	.36	37
		2	.00	3
	351	1	1.60	52
		2	.00	7
	441	1	.00	1
		2	.00	1
	811	1	.00	2
		2	.00	2
	844	2	.00	1
	1316	1	.00	1
		2	12.50	1
	1341	2	.00	1
	1345	2	.00	1
	1371	2	.00	1
	1811	1	1.40	13
		2	.00	5
	2100	1	2.56	4
	2111	1	.00	1
		2	.00	2
	2131	2	.00	1
	2141	2	.00	1
	2171	2	.00	1
	2311	1	.00	2
		2	.00	1
	2511	1	.00	1
		2	.00	1
	2512	1	.00	1
		2	.00	1
	2513	1	.00	3
	2531	1	.00	1
		2	.00	5
	2811	2	.00	4
	2841	2	.00	2
	3043	1	.00	1
		2	.00	2
	3051	1	.00	4
		2	.00	1
	3061	1	.00	1
	3300	1	.00	1
	3311	1	.00	1

FY78 NON-EAS ATTRITION RATES

MCC	PMOS	SKILL	NON-EAS ATTR.	N
7	3371	1	.00	6
		2	.00	5
	3500	1	.00	1
	3521	1	.00	3
		2	.00	2
	3522	1	.00	2
	3531	1	1.96	17
		2	.00	4
	4100	1	.00	1
	4111	1	.00	1
		2	.00	1
	4131	1	.00	1
	4421	1	.00	2
		2	.00	1
	4931	1	.00	1
	5800	1	.00	1
	5831	1	.00	2
		2	.00	1
	6016	1	.00	1
8	131	1	.00	1
		2	.00	1
	182	2	.00	1
	300	1	.00	6
	311	1	.53	314
		2	.00	71
	331	1	.43	67
		2	.00	14
	341	1	.26	35
		2	.00	4
	351	1	.21	42
		2	.00	5
	2531	1	.00	1
		2	.00	2
	2532	2	11.11	1
	2542	2	.00	2
	2818	2	.00	2
9	100	1	.00	1
	121	1	1.28	14
		2	.00	3
	131	1	.79	11
		2	2.17	7
	151	1	.65	28
		2	.00	16
	211	2	.00	1
	231	2	.00	1

FY78 NON-EAS ATTRITION RATES

MCC	PMOS	SKILL	NON-EAS ATTR.	N
9	300	1	8.69	3
	311	1	.77	11
	341	1	.00	1
	351	1	.00	1
	400	1	.00	10
	431	1	.00	1
	441	1	.00	3
	800	2	.00	1
		1	1.11	119
	811	2	.00	3
		1	1.65	109
	842	1	.21	51
		2	1.07	10
	844	2	.00	2
		1	1.29	56
	846	2	.00	21
		1	19.99	3
	847	2	.00	3
		1	.00	5
	848	2	.00	1
	1121	1	4.99	3
		2	.00	2
	1141	2	.00	1
		1	9.99	1
	1142	2	.00	4
		1	.00	3
	1300	2	.00	4
	1316	1	.00	4
		2	2.22	5
	1341	2	.00	5
		1	4.65	5
	1345	2	.00	6
		1	.00	5
	1371	2	.00	7
		1	3.38	24
	1400	2	.00	23
	1411	1	.00	1
	1421	2	.00	1
	1431	2	.00	2
	1800	2	.00	1
		1	3.27	6
	1811	2	.00	1
		1	1.98	106
	2100	2	.00	37
		1	3.48	18
	2111	2	.00	1
		1	3.27	6

FY78 NON-EAS ATTRITION RATES

MCC	PHOS	SKILL	NON-EAS ATTR.	N
9	2111	2	1.35	9
	2131	1	19.99	1
		2	.00	2
	2141	1	.43	20
		2	.85	23
	214A	1	.00	7
		2	.00	11
	2151	2	.00	2
	2161	1	.00	1
	2171	1	.00	4
	231A	1	2.27	5
		2	1.03	10
	2500	1	1.88	7
		2	.00	1
	2511	1	.00	1
		2	.00	1
	2512	1	1.80	22
		2	.00	35
	2531	1	1.30	95
		2	.17	64
	2532	1	.00	1
	2533	2	.00	1
	2534	1	.00	6
		2	.00	2
	2537	2	.00	1
	2542	1	.00	9
		2	.00	10
	2800	1	1.98	10
	2811	1	.00	1
		2	2.49	5
	2813	1	.00	1
		2	.00	1
	2841	1	1.53	6
		2	.00	9
	2871	2	.00	1
	2872	2	.00	1
	2881	2	.00	1
	3000	1	3.44	3
		2	.00	1
	3043	1	1.74	17
		2	.00	23
	3051	1	1.91	17
		2	.00	11
	3052	1	.00	3
	3211	1	.00	1
		2	.00	1
	3300	1	.58	30

FY78 NON-EAS ATTRITION RATES

MCC	PMOS	SKILL	NON-EAS ATTR.	N
9	3311	1	.93	12
		2	.00	1
	3371	1	1.10	25
		2	.00	11
	3421	1	.00	1
		2	.00	1
	3431	2	.00	1
	3500	1	.79	101
		2	.00	1
	3513	1	.00	1
	3521	1	1.47	38
		2	.99	13
	3522	1	.00	2
		2	.00	2
	3523	2	.00	1
	3531	1	1.30	69
		2	.00	25
	3533	1	.00	2
		2	.00	1
	3534	1	8.33	2
	3535	1	6.25	2
		2	.00	5
	4312	2	.00	1
	4421	1	.00	1
		2	.00	1
	4422	1	.00	1
	5534	1	19.99	1
		2	.00	1
	5536	2	.00	2
	5537	1	.00	2
		2	.00	2
	5541	1	.00	4
		2	.00	4
	5543	1	.00	1
	5544	1	.00	1
		2	.00	1
	5546	1	.00	1
		2	.00	1
	5547	1	.00	2
	5563	1	.00	1
		2	.00	2
	5831	2	.00	1
	5932	1	.00	1
		2	.00	2
	5956	1	.00	1
	7011	2	.00	1
	7041	2	.00	1

FY78 NON-EAS ATTRITION RATES

MCC	PMOS	SKILL	NON-EAS ATTR.	N
9	9900	1	.80	11
	9979	1	.00	13
10	121	1	.00	3
		2	.99	21
	131	1	.00	4
		2	.00	19
	151	1	.60	16
		2	.24	80
	161	2	.00	3
	182	2	.00	6
	231	2	.00	10
	311	1	.85	11
		2	.00	103
	331	2	.00	29
	341	1	.00	7
		2	.29	36
	351	1	.22	4
		2	.00	39
	352	2	.00	1
	431	2	.00	3
	441	2	.00	8
	811	1	.00	1
		2	.00	10
	842	1	.00	1
		2	.00	1
	844	2	.00	8
	846	2	.00	2
	849	1	.00	1
		2	.00	1
	1121	2	.00	3
	1141	2	.00	3
	1161	2	.00	6
	1316	1	.00	1
		2	.00	1
	1341	2	.00	4
	1345	2	.00	1
	1371	2	.00	11
	1381	2	.00	2
	1391	2	.00	3
	1522	1	9.99	1
	1811	2	.00	5
	1833	2	.00	9
	2111	1	.00	1
		2	.00	7
	2131	2	.00	1
	2141	2	.00	1

FY78 NON-EAS ATTRITION RATES

MCC	PMOS	SKILL	NON-EAS ATTR.	N
10	2142	2	.00	1
	2144	2	.00	1
	2171	2	.00	1
	2311	1	.00	6
		2	.00	13
	2512	1	.00	4
		2	.51	20
	2531	1	.00	6
		2	.13	68
	2532	2	.00	1
	2537	2	.00	1
	2542	2	.00	7
	2811	2	.00	3
	2814	2	.00	1
	2818	2	.00	1
	2841	2	.00	1
	3000	2	.00	1
	3043	1	.00	2
		2	.00	7
	3051	1	.00	3
		2	.00	35
	3072	2	.00	30
	3081	2	.00	1
	3111	2	.00	1
	3121	2	.00	1
	3241	2	.00	1
	3311	2	.00	2
	3371	2	.00	6
	3421	2	.00	5
	3451	2	.00	1
	3513	2	.00	1
	3521	2	.00	4
	3523	2	.00	1
	3531	1	.00	2
		2	.00	40
	3534	2	33.33	1
	3535	2	.00	4
	4013	2	.00	1
	4016	2	.00	2
	4034	2	.00	3
	4063	2	.00	1
	4312	2	.00	1
	4421	2	.00	2
	4631	2	.00	1
	4911	2	.00	1
	4931	2	.00	3
	5537	2	.00	1

FY78 NON-EAS ATTRITION RATES

MCC	PMOS	SKILL	NON-EAS ATTR.	N
10	5593	2	.00	1
	5811	1	.00	2
		2	.00	25
	5831	1	.00	1
		2	.00	58
	5921	2	.00	1
	5943	2	.00	1
	5962	2	.00	1
	6012	2	.00	1
	6013	2	.00	2
	6014	2	.00	2
	6015	2	.00	1
	6022	2	.00	3
	6023	2	.00	1
	6028	2	.00	1
	6042	2	.00	4
	6052	2	.00	1
	6055	2	.00	1
	6062	2	.00	2
	6064	2	.00	2
	6075	2	.00	1
	6077	2	.00	1
	6082	2	.00	6
	6112	2	.00	1
	6113	2	.00	1
	6123	2	.00	1
	6521	2	.00	5
	6531	2	.00	3
	6541	2	.00	3
	6617	2	.00	1
	7041	2	.00	6
	7212	2	.00	1
	7222	2	.00	6
	7234	2	.00	7
	7242	2	.00	1
	7312	2	.00	1
11	0	1	3.33	6
		2	.00	3
	100	1	2.08	240
		2	.00	5
	121	1	1.33	106
		2	.16	65
	131	1	.86	64
		2	.00	70
	151	1	.90	532
		2	.25	350

FY78 NON-EAS ATTRITION RATES

MCC	PMOS	SKILL	NON-EAS ATTR.	N
11	161	1	1.56	14
		2	.64	19
	182	2	.00	8
	231	1	.00	2
		2	.00	1
	241	2	.00	1
	251	2	.00	1
	300	1	2.84	1421
		2	.00	1
	311	1	3.34	361
		2	.79	187
	331	1	3.01	53
		2	.00	39
	341	1	1.31	59
		2	.37	59
	351	1	2.15	98
		2	.29	39
	352	2	.00	1
	369	2	.00	1
	400	1	.00	12
	431	1	.00	1
		2	.00	2
	441	1	5.88	6
		2	.94	11
	451	2	.00	2
	491	2	.00	1
	800	1	1.83	25
	811	1	3.95	50
		2	4.49	16
	844	1	1.40	9
		2	1.26	9
	846	2	.00	1
	847	2	.00	1
	848	2	.00	3
	849	1	.00	2
		2	.00	4
	1100	1	.54	189
		2	.00	1
	1121	1	1.61	23
		2	.00	14
	1141	1	.48	21
		2	.95	13
	1142	1	2.70	6
		2	1.16	12
	1161	1	.00	7
		2	.00	9
	1171	1	7.31	6

FY78 NON-EAS ATTRITION RATES

MCC	PMOS	SKILL	NON-EAS	ATTR.	N
11	1171	2		.00	2
	1300	1		2.00	353
	1316	1		1.72	5
		2		2.63	7
	1341	1		.90	16
		2		.90	13
	1345	1		.00	13
		2		1.78	9
	1371	1		1.43	147
		2		.32	38
	1372	2		.00	1
	1381	1		5.88	4
	1391	1		.00	16
		2		.00	9
	1400	1		1.14	50
	1411	1		3.44	8
		2		.00	9
	1421	1		.00	1
		2		.00	2
	1431	1		.00	2
		2		.00	2
	1500	1		2.12	16
	1521	1		1.05	18
		2		.00	3
	1522	1		25.00	1
		2		.00	4
	1531	1		3.57	3
		2		.00	1
	1800	1		5.06	10
	1811	1		5.20	15
		2		4.91	9
	1833	1		2.25	30
		2		.00	30
	2100	1		.63	78
		2		.00	1
	2111	1		.56	33
		2		.86	36
	2112	2		.00	1
	2131	1		.00	1
		2		.00	1
	2141	1		.00	3
		2		.00	1
	2142	1		2.32	7
		2		1.11	11
	2144	1		8.33	1
		2		.00	1
	2161	1		5.55	2

FY78 NON-EAS ATTRITION RATES

MCC PHOS	SKILL	NON-EAS ATTR.	N
11	2161	.00	1
	2171	.00	6
	2300	.00	2
	2311	.62	33
	2336	.45	22
	2500	4.41	11
	2511	.00	2
	2512	.00	1
	2531	1.85	35
	2532	.00	36
	2534	3.19	81
	2537	.78	55
	2542	.00	3
	2621	.00	1
	2622	.00	2
	2631	.00	2
	2651	.00	2
	2800	.54	55
	2811	.00	3
	2813	2.70	8
	2814	.00	15
	2815	3.33	5
	2818	.48	23
	2819	.00	1
	2823	.94	11
	2825	.00	1
	2826	.00	5
	2828	.00	1
	2829	.00	1
	2831	3.44	3
	2841	.00	14
		.81	11
		.97	34

FY78 NON-EAS ATTRITION RATES

MCC	PHOS	SKILL	NON-EAS	ATTR.	N
11	2851	1		.00	2
		2		.00	4
	2853	1		.00	1
		2		.00	7
	2861	2		.00	1
	2871	1		1.36	7
		2		.00	10
	2872	2		.00	5
	2875	2		.00	1
	2881	1		.00	2
		2		.00	8
	3000	1		1.32	464
		2		.00	6
	3041	1		.00	2
		2		.00	2
	3042	2		.00	1
	3043	1		2.27	92
		2		.12	85
	3051	1		2.09	192
		2		.54	100
	3052	2		.00	3
	3061	1		.95	30
		2		.00	8
	3072	1		1.51	20
		2		.66	18
	3081	1		5.55	6
		2		1.29	8
	3100	1		1.27	43
	3111	1		.00	17
		2		.00	8
	3121	1		2.19	12
		2		.56	17
	3141	1		1.85	7
		2		.00	12
	3200	1		1.14	29
	3211	1		7.99	3
		2		.00	3
	3241	2		.00	1
	3300	1		.86	244
		2		.00	2
	3311	1		2.15	28
		2		2.23	17
	3371	1		2.09	195
		2		.37	115
	3372	1		.00	1
	3400	1		1.05	89
		2		.00	8

FY78 NON-EAS ATTRITION RATES

MCC	PMOS	SKILL	NON-EAS	ATTR.	N
11	3421	1	1	1.12	109
		2	1	.49	79
	3431	1	1	1.55	21
		2	1	.00	11
	3432	2	2	.00	2
	3451	1	1	.63	14
		2	1	.00	11
	3452	2	2	.00	2
	3500	1	1	1.29	530
		2	1	3.57	8
	3513	1	1	3.12	4
		2	3	.00	3
	3516	1	1	.00	1
		2	1	.00	1
	3521	1	1	1.69	21
		2	16	.86	16
	3522	1	1	1.35	12
		2	5	2.49	5
	3523	2	2	.00	1
	3524	1	1	.00	1
	3531	1	1	.00	3
		2	347	2.18	347
	3533	1	1	.28	196
		2	27	1.99	27
	3534	1	1	.00	29
		2	5	2.63	5
	3535	1	1	.63	17
		2	117	1.74	117
	4000	1	1	.48	22
		2	67	1.72	67
	4013	1	1	.00	3
		2	11	11.11	11
	4014	1	1	.00	1
		2	1	.00	1
	4016	1	1	.00	1
		2	14	2.34	14
	4034	1	1	.00	15
		2	27	.78	27
	4038	1	1	.00	65
	4063	1	1	.00	4
		2	17	.00	17
	4069	1	1	.00	23
	4100	1	1	.00	1
		2	36	1.68	36
	4111	1	1	.00	1
		2	3	.00	3
	4131	1	1	.00	8
		2	11	1.76	11

FY78 NON-EAS ATTRITION RATES

MCC	PMOS	SKILL	NON-EAS ATTR.	N
11	4131	2	.00	9
	4300	1	4.54	3
		2	.00	1
	4312	1	.00	4
		2	.81	15
	4313	2	.00	1
	4400	1	.00	57
		2	.00	1
	4421	1	2.16	23
		2	.00	15
	4422	1	.00	8
		2	1.01	13
	4423	2	.00	1
	4600	1	4.54	3
		2	.00	2
	4631	1	1.17	26
		2	.63	19
	4653	2	.00	1
	4671	1	.00	2
		2	3.99	3
	4900	1	1.74	58
		2	.00	2
	4911	1	1.20	9
		2	.00	5
	4921	1	.96	10
		2	.00	3
	4931	1	1.03	22
		2	.00	18
	5500	1	.00	46
	5526	1	.00	1
	5528	2	.00	1
	5534	1	.00	3
		2	.00	2
	5536	2	.00	1
	5537	1	.00	1
		2	.00	1
	5541	1	.00	2
		2	.00	6
	5544	1	.00	1
		2	100.00	1
	5546	1	.00	1
		2	.00	5
	5547	1	.00	1
		2	.00	3
	5563	1	.00	2
		2	.00	4
	5565	1	.00	1

FY78 NON-EAS ATTRITION RATES

MCC	PHOS	SKILL	NON-EAS ATTR.	N
11	5565	2	.00	3
	5574	1	.00	6
	5577	1	.00	1
	5593	2	.00	1
	5700	1	.00	1
	5711	2	.00	2
	5800	2	.00	2
		1	1.69	53
	5811	2	.00	6
		1	.75	379
	5812	2	.25	282
		1	.00	3
	5813	2	.00	6
	5831	2	.00	1
		1	.69	271
	5900	2	.25	233
		1	.00	2
	5923	1	.00	1
	5926	2	.00	1
	5929	2	.00	1
	5931	2	.00	3
	5932	1	.00	1
		2	4.54	2
	5933	2	.00	1
	5934	2	.00	1
	5942	1	.00	1
		2	.00	1
	5943	2	.00	7
	5945	1	.00	1
		2	.00	3
	5952	2	.00	2
	5953	2	.00	1
	5954	2	.00	4
	5955	1	.00	2
		2	.00	14
	5956	2	.00	5
	5957	1	5.26	2
		2	1.07	10
	5958	2	.56	20
	5962	2	.00	6
	5963	1	.00	2
		2	1.24	9
	5964	2	.00	5
	5979	2	.00	2
	5982	2	.00	2
	6000	1	4.44	9

FY78 NON-EAS ATTRITION RATES

MCC	PMOS	SKILL	NON-EAS ATTR.	N
11	6000	2	.00	1
	6012	2	6.25	3
	6014	1	7.14	3
		2	.00	4
	6016	2	.00	2
	6022	1	.00	2
		2	.00	1
	6024	1	.00	1
		2	.00	4
	6028	1	.00	12
		2	.00	31
	6036	2	.00	2
	6041	1	100.00	1
	6042	1	4.81	10
		2	1.57	18
	6051	2	.00	1
	6052	1	1.81	6
		2	.00	3
	6054	1	16.66	1
	6055	1	1.92	6
		2	.00	6
	6061	1	.00	1
	6062	1	14.28	1
		2	.00	11
	6064	2	1.85	5
		1	.00	8
	6072	1	.00	1
		2	.00	3
	6075	1	.00	2
		2	.00	7
	6076	2	.00	5
	6077	1	5.88	2
		2	.00	3
	6078	1	.00	2
		2	.00	1
	6082	1	3.70	6
		2	.00	12
	6111	1	.00	2
	6112	1	.00	10
		2	.00	14
	6113	1	1.29	15
		2	.00	9
	6114	1	.00	6
		2	.00	9
	6121	1	.00	1
	6122	1	.00	4
		2	.00	5

FY78 NON-EAS ATTRITION RATES

MCC	PHOS	SKILL	NON-EAS	ATTR.	N
11	6123	1		.00	3
		2		.00	1
	6124	2		.00	1
	6125	1		.00	3
		2		.00	2
	6132	1		.00	1
		2		.00	1
	6500	2		.00	1
	6521	1		2.32	23
		2		.00	27
	6531	1		9.99	3
		2		1.78	7
	6541	1		11.11	1
		2		.00	1
	6600	1		1.56	8
		2		.00	3
	6611	1		.00	2
	6612	1		.00	9
		2		.00	8
	6613	1		1.44	6
		2		.00	3
	6614	1		4.16	2
		2		.00	1
	6616	1		25.00	1
		2		.00	1
	6617	1		.00	5
		2		.00	4
	6618	2		.00	5
	6619	1		.00	1
		2		.00	1
	6620	1		3.22	3
		2		.00	6
	6621	1		.00	1
	6625	1		.00	1
	6631	1		2.70	4
	6632	1		1.96	5
		2		.90	11
	6633	1		.00	6
		2		.00	4
	6634	1		.00	1
	6636	2		.00	1
	6638	1		.00	1
	6639	1		.00	3
		2		.00	2
	6657	2		.00	2
	6659	2		.00	1
	6662	2		.00	2

FY78 NON-EAS ATTRITION RATES

UNIT	POS	Skill	NON-EAS ATTR.	N
6882	2		.00	4
6733	1		100.00	1
6821	2		1.92	21
6831	2		.00	12
7000	1		.00	1
7011	2		.00	7
7041	1		1.81	1
7051	2		.00	13
7200	1		.00	6
7212	2		1.42	20
7232	2		.00	25
7234	2		1.54	93
7242	1		.12	88
7300	2		39.99	2
7311	1		.00	1
7312	1		.00	15
7321	2		.00	3
7322	2		.00	23
7372	2		.00	1
7382	2		.00	14
9900	1		1.17	113
9975	1		.00	2
9979	1		.74	3
12	0		7.69	2
	1		.00	1
	2		7.14	4
	1		4.16	4
100	1		.90	28
	2		2.27	6
121	1		1.16	87
	2		.15	66
131	1		.82	70
	2		.30	72
141	2		.00	1
151	1		1.08	266
	2		.18	233

FY78 NON-EAS ATTRITION RATES

MCC	PMOS	SKILL	NON-EAS ATTR.	N
12	161	1	.00	10
		2	.00	17
	182	2	.00	18
	200	2	.00	2
	211	2	.00	1
	231	1	4.16	3
		2	.00	5
	239	2	.00	1
	241	1	.00	1
		2	.00	2
	300	1	1.69	83
		2	.00	1
	311	1	.88	856
		2	.28	242
	331	1	.99	178
		2	.00	43
	341	1	.76	167
		2	.80	44
	351	1	.62	233
		2	.45	33
	352	1	6.25	2
	369	2	.00	6
	400	1	3.22	6
		2	.00	2
	431	1	.00	7
		2	.00	10
	441	1	.00	3
		2	.57	21
	451	2	7.69	2
	491	1	.00	1
	800	1	.00	58
	811	1	3.29	17
		2	.00	6
	844	2	.00	1
	1100	1	.00	7
	1121	1	.00	18
		2	.00	17
	1141	1	.00	17
		2	.46	27
	1142	1	1.05	18
		2	.53	26
	1161	1	2.04	21
		2	.49	24
	1171	2	.00	4
	1173	1	3.22	4
		2	.00	2
	1300	1	1.20	84

FY78 NON-EAS ATTRITION RATES

MCC	PNOS	SKILL	NON-EAS ATTR.	N
12	1316	1	2.45	14
		2	.00	4
	1341	1	2.02	43
		2	.29	38
	1345	1	1.29	17
		2	.00	8
	1371	1	1.63	59
		2	.46	29
	1381	1	33.33	1
		2	.00	3
	1391	1	3.22	5
		2	.00	6
	1411	2	.00	4
	1431	2	.00	3
	1500	1	3.99	3
		2	.00	1
	1521	1	3.07	6
		2	1.23	9
	1522	2	3.22	3
	1531	1	.00	1
		2	.00	1
	1532	2	.00	1
	1542	2	.00	1
	1800	1	2.89	54
	1811	1	2.56	10
		2	.00	2
	1833	1	16.66	8
		2	.00	2
	2100	1	.86	124
	2111	1	1.04	12
		2	.52	25
	2131	1	.00	2
		2	2.85	3
	2141	1	5.55	2
		2	.00	1
	2142	2	.00	2
	2144	1	50.00	1
		2	.00	4
	2161	1	.00	3
	2171	1	.00	2
	2300	1	.00	49
		2	.00	1
	2311	1	1.01	12
		2	.00	12
	2500	1	2.52	569
		2	.00	1
	2511	1	3.33	3

FY78 NON-EAS ATTRITION RATES

MCC	PMOS	SKILL	NON-EAS ATTR.	N
12	2511	2	.00	1
	2512	1	1.36	19
		2	.79	14
	2531	1	2.28	38
		2	.00	38
	2533	2	.00	1
	2534	1	.00	1
		2	.00	2
	2537	2	.00	2
	2542	1	.81	52
		2	.00	24
	2549	2	.00	1
	2571	1	.00	1
		2	.00	1
	2572	2	.00	1
	2600	1	.87	273
		2	.00	2
	2621	1	.17	106
		2	.33	135
	2622	1	.49	19
		2	.00	77
	2629	2	.00	2
	2631	1	.30	34
		2	.00	65
	2632	1	.00	8
		2	.00	4
	2639	2	.00	1
	2641	1	.00	13
		2	.00	47
	2651	1	.13	70
		2	.00	72
	2800	1	.80	761
		2	2.22	13
	2811	1	.00	6
		2	.00	16
	2813	2	.00	2
	2814	1	.00	2
		2	.00	5
	2815	1	50.00	1
	2818	1	.00	1
		2	.00	10
	2819	2	.00	2
	2825	2	.00	3
	2826	2	.00	1
	2828	2	3.70	3
	2831	1	.00	3
		2	.00	3

FY78 NON-EAS ATTRITION RATES

MCC	PMOS	SKILL	NON-EAS ATTR.	N
12	2841	1	4.76	5
		2	.29	34
	2851	1	.00	2
		2	.00	16
	2853	2	.00	2
	2861	1	25.00	1
	2871	1	.00	1
		2	2.12	5
	2872	2	25.00	1
	2881	1	.00	2
		2	.00	13
	3000	1	1.72	84
		2	.00	1
	3041	1	.00	7
		2	.00	1
	3043	1	1.02	80
		2	.47	94
	3051	1	1.21	68
		2	.51	55
	3052	1	.00	1
		2	.00	1
	3061	1	.00	9
		2	.00	6
	3071	1	.00	1
		2	.00	3
	3072	1	1.03	82
		2	.00	117
	3081	1	.00	1
		2	.00	3
	3100	1	.75	28
	3111	1	3.93	20
		2	.00	11
	3121	1	6.66	7
		2	1.96	7
	3141	1	4.99	2
		2	.00	3
	3200	1	2.17	4
	3211	1	3.03	3
		2	.00	1
	3241	1	.00	1
		2	.00	1
	3242	2	.00	1
	3300	1	.00	10
	3311	1	2.15	17
		2	.00	16
	3371	1	1.38	77
		2	.45	73

FY78 NON-EAS ATTRITION RATES

MCC	PMOS	SKILL	NON-EAS ATTR.	N
12	3400	1	.00	11
		2	.00	2
	3421	1	1.21	49
		2	1.10	33
	3431	1	.67	13
		2	.00	10
	3441	2	.00	1
	3451	1	.00	10
		2	.00	10
	3500	1	1.62	33
		2	.00	3
	3513	1	3.33	3
		2	.00	4
	3516	1	7.69	3
	3521	1	1.21	61
		2	.30	35
	3522	1	1.36	46
		2	.00	12
	3523	2	.00	3
	3524	1	1.88	7
		2	.00	2
	3531	1	1.64	128
		2	.23	103
	3533	1	2.38	5
		2	.00	14
	3534	1	.00	1
		2	.00	7
	3535	1	.00	15
		2	.00	22
	4000	1	.63	14
		2	.00	1
	4013	2	.00	1
	4014	2	.00	1
	4016	1	3.99	4
		2	.00	16
	4034	1	.00	10
		2	.25	49
	4038	2	.00	1
	4044	2	.00	7
	4063	1	.00	5
		2	1.38	16
	4065	2	.00	1
	4100	1	.99	12
		2	.00	1
	4111	1	.00	3
		2	.00	3
	4131	1	1.53	6

FY78 NON-EAS ATTRITION RATES

MCC	PMOS	SKILL	NON-EAS ATTR.	N
12	4131	2	.00	14
	4300	1	1.88	18
	4312	1	.00	3
		2	.00	8
	4313	2	.00	2
	4400	1	.00	1
	4421	1	1.29	8
		2	.00	9
	4422	1	3.44	3
		2	.00	5
	4600	1	.00	27
		2	.00	1
	4631	1	3.17	7
		2	.00	7
	4671	1	.00	2
	4900	2	.00	1
	4911	2	.00	10
	4931	1	.00	1
		2	.00	2
	5500	1	.00	1
	5536	2	.00	1
	5546	1	.00	1
	5574	1	.00	5
		2	.00	8
	5577	1	.00	5
		2	.00	5
	5593	1	4.16	2
		2	.00	12
	5700	1	.00	1
		2	.00	4
	5711	1	.00	1
		2	.00	3
	5800	1	.00	72
		2	.00	2
	5811	1	.52	100
		2	.40	62
	5812	2	.00	1
	5813	2	.00	1
	5831	1	.00	20
		2	.00	55
	5900	1	.33	166
		2	.00	1
	5921	2	.00	4
	5922	2	.00	5
	5923	2	.00	9
	5925	2	.00	1
	5929	2	.00	3

FY78 NON-EAS ATTRITION RATES

MCC	PMOS	SKILL	NON-EAS ATTR.	N
12	5931	2	.00	3
	5932	2	.00	3
	5942	1	11.11	2
		2	.00	7
	5943	2	.00	8
	5945	1	.00	3
		2	.00	16
	5952	2	.00	2
	5955	1	.00	2
		2	.00	14
	5956	1	.00	4
		2	.00	15
	5957	2	.00	1
	5958	2	.00	16
	5962	1	.00	1
		2	.00	2
	5963	1	.00	3
		2	.00	30
	5964	1	.00	2
		2	.00	5
	5974	2	.00	2
	5978	2	.00	1
	6000	1	1.37	912
		2	.00	3
	6011	1	.00	16
		2	.00	1
	6012	1	.53	18
		2	.00	20
	6013	2	.00	2
	6014	1	.00	19
		2	.00	33
	6015	1	.00	9
		2	.00	14
	6016	1	.00	1
		2	.00	3
	6018	1	.00	5
		2	.00	12
	6021	1	1.51	6
		2	.00	1
	6022	1	.00	16
		2	.00	24
	6023	1	1.20	7
		2	1.24	9
	6024	1	1.24	34
		2	.00	34
	6025	1	3.40	9
		2	.00	8

FY78 NON-EAS ATTRITION RATES

MCC	PMOS	SKILL	NON-EAS	ATTR.	N
12	6026	1		.00	1
		2		.00	4
	6027	2		.00	1
	6028	1		.00	2
		2		.00	13
	6036	1		.00	2
		2		.00	7
	6041	1		.00	9
	6042	1		.59	62
		2		.00	101
	6051	1		.00	8
		2		.00	1
	6052	1		.88	25
		2		.36	35
	6053	1		.00	3
		2		.00	3
	6054	1		.00	17
		2		.50	26
	6055	1		.24	37
		2		.33	35
	6061	1		.00	5
		2		.00	1
	6062	1		.49	20
		2		.44	49
	6064	1		.00	26
		2		.25	42
	6071	1		.00	7
	6072	1		.48	20
		2		.68	17
	6076	1		.00	8
		2		.00	28
	6077	1		.00	2
		2		.34	32
	6078	1		.00	3
		2		.00	8
	6082	1		1.45	36
		2		.00	49
	6083	2		.00	2
	6111	1		.00	19
		2		.00	1
	6112	1		.00	9
		2		.00	22
	6113	1		2.27	4
		2		.00	12
	6114	1		.58	65
		2		.52	65
	6122	1		.00	2

FY78 NON-EAS ATTRITION RATES

MCC	PMOS	SKILL	NON-EAS ATTR.	N
12	6122	2	.00	10
	6123	1	.00	1
		2	.00	7
	6124	1	.00	7
		2	2.49	4
	6125	1	.68	27
		2	.00	35
	6132	1	.00	6
		2	.00	13
	6200	1	.00	1
	6212	2	16.66	1
	6300	1	.00	1
	6351	1	.00	1
	6500	1	.00	53
		2	.00	1
	6511	2	.00	1
	6521	1	1.71	19
		2	.36	26
	6531	1	.78	92
		2	.19	97
	6541	1	.78	31
		2	.93	24
	6600	1	.89	835
		2	.00	24
	6611	1	.60	32
		2	.00	3
	6612	1	.27	32
		2	.00	34
	6613	1	.00	2
		2	.00	8
	6614	1	.00	6
		2	.00	21
	6615	1	.00	1
		2	.00	3
	6616	1	.00	9
		2	.00	15
	6617	1	.38	24
		2	.00	20
	6618	1	.00	8
		2	1.56	12
	6619	1	.00	11
		2	.00	10
	6620	1	.00	14
		2	.00	12
	6621	1	.74	16
	6623	1	.00	1
		2	9.99	1

FY78 NON-EAS ATTRITION RATES

MCC	PHOS	SKILL	NON-EAS ATTR.	N
12	6625	2	.00	1
	6627	2	.00	2
	6628	1	.00	3
	6628	2	.00	1
	6629	2	.00	1
	6631	1	.80	20
	6631	2	.00	2
	6632	1	.31	59
	6632	2	.20	50
	6633	1	.00	1
	6633	2	.00	9
	6634	1	.00	17
	6634	2	.00	10
	6635	1	.00	6
	6636	2	.00	4
	6636	1	.00	20
	6637	2	.00	20
	6638	1	.32	3
	6638	2	.00	28
	6639	1	.91	27
	6641	2	.00	19
	6644	2	.00	11
	6644	2	.00	5
	6646	1	.00	8
	6647	2	.00	1
	6656	1	.00	2
	6657	2	.00	1
	6657	1	.08	13
	6658	2	.00	4
	6659	2	.00	8
	6663	2	.00	5
	6682	1	.00	1
	6682	2	.00	2
	6683	2	.00	2
	6700	1	.00	4
	6712	1	.00	3
	6722	2	.00	1
	6757	1	.00	2
	6800	1	.44	1
	6821	1	.00	59
	7000	2	.00	1
	7011	1	.00	3
	7011	2	.00	84
			.00	1

FY78 NON-EAS ATTRITION RATES

MCC	PMOS	SKILL	NON-EAS ATTR.	N
12	7041	1	1.12	25
		2	.00	45
	7051	1	2.14	34
		2	.00	19
	7200	1	1.62	46
		2	.00	1
	7212	1	.00	1
		2	3.57	3
	7222	1	.00	2
		2	.00	2
	7234	1	.57	19
		2	.00	19
	7242	1	.00	2
		2	.00	8
	7300	1	.55	49
	7311	1	.96	10
	7312	2	1.14	14
	7321	1	.00	2
		2	.00	1
	7322	1	.00	2
		2	.00	14
	7371	1	.00	1
		2	.00	1
	7372	2	.00	1
	9900	1	1.57	137
		2	.00	1
	9901	2	.00	1
	9970	1	.42	59
	9979	1	1.87	36

Appendix B

Appendix B

<u>MCC CODE</u>	<u>DESCRIPTION</u>	<u>ACTUAL MCCS</u>
00	USMC Recruit Depots	016, 017
01	Hawaii	130, 436, 442, 1CD, 091, 1C1
02	West Coast Fleet Marine Force (FMF) Units	121, 143, 144, 164, 169, 1D0 1D4
03	East Coast Fleet Marine Force Units	122, 142, 151, 160, 165, 1D1, 1D3, 1DK
04	Far East FMF Units	124, 092, 045, 044, 145, 146, 197, 1C2, 1C3, 1D2, 1D5, 1E7 1E8
05	Marine Barracks in United States	210, 213, 215, 217, 218, 224, 226, 229, 230, 233, 234, 237, 240, 251, 254, 256, 262, 263, 268, 271, 272, 274, 275
06	Overseas Marine Barracks	353, 355, 362, 365, 311, 313, 314, 315, 316, 317, 320, 323, 326, 327, 328
07	Overseas Marine Barracks	351, 312, 333
08	Marines on Sea Duty	412, 413, 414, 431, 434, 436, 438, 439, 442, 444, 446, 451
09	Force Troops, FMF PAC	150, 1DJ
10	Security Guard Detachments	RD0, R02, R06, R08, R10, R14
11	Non-FMF Units	009, 010, 011, 012, 013, 014, 019, 022, 023, 024, 025, 026, 027, 028, 029, 030, 036, 038, 040, 041, 047, 048, 049, 052, 057, 058, 059, 063
12	All Others	ALL OTHER

AD-A065 539

GEORGE WASHINGTON UNIV WASHINGTON D C PROGRAM IN LOG--ETC F/8 5/9
AN APPLICATION OF THE SRS/RG IN DETERMINING ENLISTED ATTRITION --ETC(U)
DEC 78 J M D'AMALIO, W M SEVON N00014-75-C-0729

UNCLASSIFIED

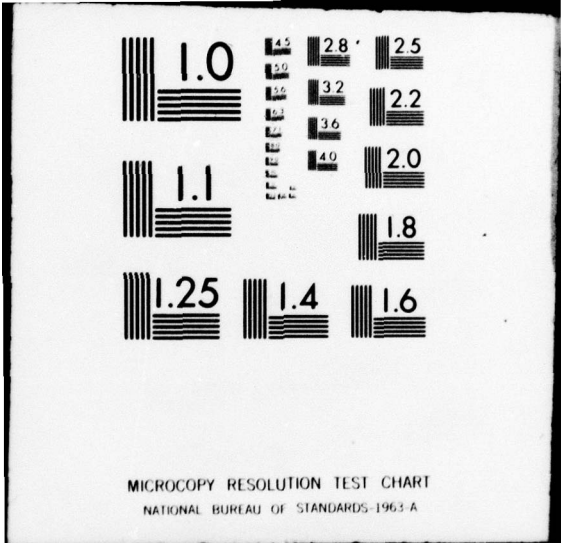
SERIAL-T-389

NL

2 OF 2
AD
AD A065539



END
DATE
FILMED
5 -79
DDC



Appendix C

Appendix C

NON-EAS SEPARATION CODES

GKA THRU HNC
JKA THRU JNC
H20 THRU H67
820 THRU 899

GFN, JCM, JDF, JDJ, JDK, JFB, JFC, JFF, JFG, JFK, JFL,
JFM, JFN, JFP, JFR, JFT, JFV, JHF, JJB, JJC, JJD, JMF,
JNF, JPB, KCM, KCQ, KDB, KDC, KDF, KDG, KDH, KFF, KFS,
KFV, KNL, LFG, MCK, MDB, MDH, MND, RFJ, RFK, SFJ, SFK,
VFJ, VFK, WFK, YND

IMMEDIATE REENLISTMENT SEPARATION CODES

KHC

EAS SEPARATION CODES

ALL OTHERS

THE GEORGE WASHINGTON UNIVERSITY
Program in Logistics
Distribution List for Technical Papers

The George Washington University
Office of Sponsored Research
Library
Vice President H. F. Bright
Dean Harold Liebowitz
Dean Henry Solomon

ONR
Chief of Naval Research
(Codes 200, 434)
Resident Representative

OPNAV
OP-40
DCNO, Logistics
Navy Dept Library
NAVDATA Automation Cmd
OP-964

Naval Aviation Integrated Log Support

NARDAC Tech Library

Naval Electronics Lab Library

Naval Facilities Eng Cmd Tech Library

Naval Ordnance Station
Louisville, Ky.
Indian Head, Md.

Naval Ordnance Sys Cmd Library

Naval Research Branch Office
Boston
Chicago
New York
Pasadena
San Francisco

Naval Ship Eng Center
Philadelphia, Pa.
Washington, DC

Naval Ship Res & Dev Center

Naval Sea Systems Command
PMS 30611
Tech Library
Code 073

Naval Supply Systems Command
Library
Operations and Inventory Analysis

Naval War College Library
Newport

NAVFORS Tech Library

PMSO

Integrated Sea Lift Study

USN Ammo Depot Earle

USN Postgrad School Monterey
Library
Dr Jack R. Borsting
Prof C. R. Jones

US Marine Corps
Commandant
Deputy Chief of Staff, R&D

Marine Corps School Quantico
Landing Force Dev Ctr
Logistics Officer
Commanding Officer
USS Francis Marion (LPA-249)

Armed Forces Industrial College

Armed Forces Staff College

Army War College Library
Carlisle Barracks

Army Cmd & Gen Staff College

Army Logistics Mgt Center
Fort Lee

Commanding Officer, USALDSKA
New Cumberland Army Depot

Army Inventory Res Ofc
Philadelphia

Air Force Headquarters
AFADS-3
LEXY
SAF/ALC

Griffiss Air Force Base
Reliability Analysis Center

Gunter Air Force Base
AFLMC/XR

Maxwell Air Force Base Library

Wright-Patterson Air Force Base
Log Command
Research Sch Log
AFALD/XR

Defense Documentation Center

National Academy of Sciences
Maritime Transportation Res Board Library

National Bureau of Standards
Dr E. H. Colvin
Dr Joan Rosenblatt

National Science Foundation

National Security Agency

Weapon Systems Evaluation Group

British Navy Staff

National Defense Hdqtrs, Ottawa
Logistics, OR Analysis Establishment

American Power Jet Co
George Chernowitz

General Dynamics, Pomona

General Research Corp
Dr Hugh Cole
Library

Logistics Management Institute
Dr Murray A. Geisler

MATTEC
Dr Elliot Feldman

Rand Corporation
Library

Carnegie-Mellon University
Dean H. A. Simon
Prof G. Thompson

Case Western Reserve University
Prof B. V. Dean
Prof M. Mesarovic
Prof S. Zacks

Cornell University
Prof R. E. Bechhofer
Prof R. W. Conway
Prof Andrew Schultz, Jr.

Cowles Foundation for Research in Economics
Prof Herbert Scarf
Prof Martin Shubik

Florida State University
Prof R. A. Bradley

Harvard University
Prof K. J. Arrow
Prof W. G. Cochran
Prof Arthur Schleifer, Jr.

Princeton University
Prof A. W. Tucker
Prof J. W. Tukey
Prof Geoffrey S. Watson

Purdue University
 Prof S. S. Gupta
 Prof H. Rubin
 Prof Andrew Whinston

Stanford University
 Prof T. W. Anderson
 Prof G. B. Dantzig
 Prof F. S. Hillier
 Prof D. L. Iglehart
 Prof Samuel Karlin
 Prof G. J. Lieberman
 Prof Herbert Solomon
 Prof A. F. Veinott, Jr.

University of California, Berkeley
 Prof R. E. Barlow
 Prof D. Gale
 Prof Jack Kiefer
 Prof Rosedith Sitgreaves

University of California, Los Angeles
 Prof J. R. Jackson
 Prof R. R. O'Neill

University of North Carolina
 Prof W. L. Smith
 Prof M. R. Leadbetter

University of Pennsylvania
 Prof Russell Ackoff
 Prof Thomas L. Saaty

University of Texas
 Prof A. Charnes

Yale University
 Prof F. J. Anscombe
 Prof I. R. Savage

Prof Z. W. Birnbaum
 University of Washington

Prof B. H. Bissinger
 The Pennsylvania State University

Prof Seth Bonder
 University of Michigan

Prof G. E. P. Box
 University of Wisconsin

Dr Jerome Bracken
 Institute for Defense Analyses

Prof H. Chernoff
 Mass. Institute of Technology

Prof Arthur Cohen
 Rutgers - The State University

Mr Wallace H. Cohen
 US General Accounting Office

Prof C. Derman
 Columbia University

Prof Masao Fukushima
 Kyoto University

Prof Saul I. Cass
 University of Maryland

Dr Donald P. Gaver
 Carmel, California

Prof Amrit L. Goel
 Syracuse University

Prof J. F. Hannan
 Michigan State University

Prof H. O. Hartley
 Texas A & M Foundation

Mr Gerald F. Hein
 NASA, Lewis Research Center

Prof W. M. Hirsch
 Courant Institute

Dr Alan L. Hoffman
 IBM, Yorktown Heights

Prof John R. Isbell
 State University of New York, Amherst

Dr J. L. Jain
 University of Delhi

Prof J. H. K. Kao
 Polytech Institute of New York

Prof W. Kruskal
 University of Chicago

Mr S. Kumar
 University of Madras

Prof C. E. Lemke
 Rensselaer Polytech Institute

Prof Loynes
 University of Sheffield, England

Prof Steven Nahmias
 University of Pittsburgh

Prof D. B. Owen
 Southern Methodist University

Prof E. Parzen
 Texas A & M University

Prof H. O. Posten
 University of Connecticut

Prof R. Renage, Jr.
 University of Delaware

Prof Hans Riedwyl
 University of Bern

Dr Fred Rigby
 Texas Tech College

Mr David Rosenblatt
 Washington, D. C.

Prof M. Rosenblatt
 University of California, San Diego

Prof Alan J. Rowe
 University of Southern California

Prof A. H. Rubenstein
 Northwestern University

Dr M. E. Salvesson
 West Los Angeles

Prof Edward A. Silver
 University of Waterloo, Canada

Prof M. J. Sobel
 Georgia Inst of Technology

Prof R. M. Thrall
 Rice University

Dr S. Vajda
 University of Sussex, England

Prof T. M. Whitin
 Wesleyan University

Prof Jacob Wolfowitz
 University of South Florida

Prof Max A. Woodbury
 Duke University