

AD-A065 559

NORTH CAROLINA STATE UNIV RALEIGH ENGINEERING RESEAR--ETC F/G 11/2
UNIVERSITY CONFERENCE ON CERAMIC SCIENCE: PROCESSING OF CRYSTAL--ETC(U)
JAN 79 R F DAVIS, H PALMOUR, T M HARE

N00014-77-C-0443

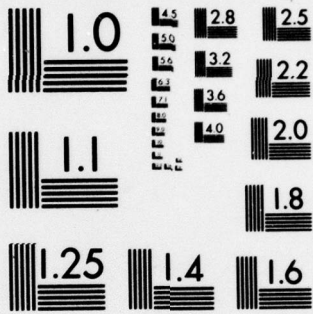
UNCLASSIFIED

NL

1 OF 1
AD A065559



END
DATE
FILMED
5-79
DOC



MICROCOPY RESOLUTION TEST CHART
NATIONAL BUREAU OF STANDARDS-1963-A

LEVEL 4

FEB 2 1979

①

AD A0 65559

⑨ Final Report,

to the

Supporting Agencies

⑮ N00014-77-C-0443, DAAG 29-78-M-0002

U. S. Department of Energy
Division of Basic Energy Sciences
Grant EG-77-G-05-5491

U. S. Office of Naval Research
Contract N00014-77-C-0443

U. S. Army Research Office
Contract DAAG 29-78-M-0002

⑫ 19P

D'D'C
PAPERS
MAR 8 1979
R
C

concerning the

⑥ Fourteenth University Conference (14th)

on Ceramic Science:

PROCESSING OF CRYSTALLINE CERAMICS (14th)

held at

North Carolina State University

November 7-9, 1977

Submitted by the

Conference Co-Chairmen

⑩ Dr. R. F. Davis, Dr. Hayne Palmour, III, Dr. T. M. Hare

Engineering Research Services Division
North Carolina State University
P. O. Box 5995
Raleigh, N.C. 27650

⑪ January, 1979

This document has been approved for public release and sale; its distribution is unlimited.

407 405

79 03 01 1212

DDC FILE COPY

ACCESSION for	White Section <input checked="" type="checkbox"/>	Buff Section <input type="checkbox"/>	<input type="checkbox"/>
NTIS			
DOC			
UNANNOUNCED			
JUSTIFICATION	<i>By on file</i>		
BY			
DISTRIBUTION/AVAILABILITY CODES			
15 / or SPECIAL			
A			

INTRODUCTION

This report summarizes the University's activities in planning, organizing and conducting an international conference concerned with processing of crystalline ceramics, and thereafter, in editing and arranging for commercial publication of its proceedings. The conference, fourteenth in an ongoing but "one-of-a-kind" series presented at North Carolina State University and several other universities in the nation involved in ceramic teaching and research, was held November 7-9, 1977, in the University's new Jane S. McKimmon Center for Continuing Education and Extension.

PURPOSE

The conference theme, PROCESSING OF CRYSTALLINE CERAMICS, addressed the principal stages of processing with emphasis upon their interactions and interrelationships. Sessions were concerned with (a) scientific aspects of all process steps which must be combined and controlled effectively and sequentially in producing crystalline ceramics (both oxides and non-oxides) and (b) utilization of these principles in developing processes for several classes of advanced ceramics which are considered to be critical to present and future technology.

DIRECTION

The conference was organized and conducted under the direction of its three co-chairmen, Drs. Davis, Palmour, and Hare. They also served as editors of the Proceedings.

79 08 01 177

SUPPORT

On a cost-sharing basis, the University's School of Engineering made available essential startup funding, as well as substantial amounts of released time over an extended period for the three faculty members who organized and directed the effort. The University also provided some additional secretarial and staff support (See Table I).

In response to University generated proposals, three federal agencies provided timely and indispensable financial support for planning and publicizing, for organizing and conducting, for meeting travel expenses for certain domestic and foreign contributors, and for editing and preparing the manuscripts for publication in the Proceedings (See Table I).

The conference was well attended, and the resultant registration fees were utilized to defray all the registrants' direct costs (conference meals, local bus transportation, prepaid copies of the Proceedings, etc.) as well as a substantial share of the indirect costs of conducting the conference. All transactions with registrants, caterers, etc. were coordinated and accounted for by the University's Division of Continuing Education (See Table II).

Tables I and II provide cost breakdowns for all the expense components involved. They show the total cost of the conference to have been \$62,742.24. Of this amount, \$15,063.00 (24%) was provided by the three supporting agencies, \$14,250.22(22.7%) by the registrants, and \$33,439.02 (53.3%) by the University's School of Engineering.

ATTENDANCE

More than 200 persons participated in conference activities including our own key University administrators, faculty members and students. Approximately 60.9% of those attending represented industry; 28.8% universities, and 10.3% government and nonprofit laboratories. Participants were drawn from the United States and abroad, including Russia (2), Yugoslavia (1), England (1), Japan (1), France (1), Germany (3), Australia (1), and the Netherlands (1) (See attached registration lists).

ADVISORY COMMITTEE

In the opinion of the co-chairmen, the success of the conference is due in no small part to early and important inputs by a 16 member Advisory Committee of distinguished ceramic scientists, educators, and engineers, all of whom have contributed to knowledge of ceramic processing and many of whom have also had prior experience in organized major conferences of this type. Most were also present for the conference itself, taking active roles as speakers, session chairmen, etc. Members of the Advisory Committee are individually identified in the published Proceedings, as they earlier had been in the press releases, preliminary announcements, and complete conference program.

CONFERENCE STAFF

The conference staff was made up of a number of faculty, staff and student members whose mostly behind-the-scenes efforts were critical to the environment, the ambiance, the timing, and the overall success of the conference. In the published Proceedings, the conference co-chairmen have identified these individuals and made special note of their valuable contributions.

AUTHORS

The most important factor governing the success of such an undertaking resides in the stature and diversity (the "mix") of the authors chosen, and in the quality, appropriateness, and timeliness of their individual presentations. Both good luck in timing and theme selection and very sound advice about topics, speakers, etc., from the Advisory Committee appear to have prevailed in this instance. The 54 papers included in the published Proceedings were generated by a total of 105 contributing authors and coauthors. Collectively, they represent most of the major academic and research centers known to be actively involved in the science of ceramic processing. Many of them are senior scientists and educators, already internationally known for outstanding contributions in their respective fields or subfields but the co-chairmen were also pleased with the opportunities this conference made available to give significant exposure before a discriminating audience to a number of extremely promising younger authors and coauthors. All authors and coauthors are identified in the complete conference program, and in the published Proceedings.

In an undertaking of this magnitude, some shrinkage of papers and authors is almost inevitable, but in this instance, was kept to quite a low level. After the complete program was printed, two papers were withdrawn and one was added. At the time of the conference, one author was ill and unable to present his paper, and one other was unexpectedly unable to attend, but arranged for a colleague (author of another paper) to make his verbal presentation.

Of the 56 papers finally scheduled for presentation, 55 were actually presented at the conference, and 54 of them are included in the published Proceedings. Despite repeated followups by telephone and letter, two

manuscripts could not be obtained in time for publication. In each case, delay was due to an author's serious illness during or after the conference.

PUBLICATION

The edited Proceedings of the conference were published by Plenum Publishing Corporation, New York and London, late in 1978. Edited by the three conference co-chairmen, the 682 + xiv pp. work contains 54 papers, some 288 figures, 61 tables, 890 references, a list of contributors, and an extensive subject index. Forty-six percent of the papers include written discussion. The work is identified as:

Hayne Palmour III, R. F. Davis, and T. M. Hare, Eds., PROCESSING OF CRYSTALLINE CERAMICS. Materials Science Research, Vol. 11, Plenum Press, New York, 1978.

Plenum has recently advertised this new volume for world wide commercial distribution at \$49.50 per copy (prepublication price).

DISTRIBUTION

Under two separate agreements, Plenum is providing the University with copies of the Proceedings to meet all conference needs. Under the publishing agreement, a total of 61 gratis copies have been furnished to the Editors (3 each) and to each principal author. Under a separate special prepublication purchase agreement with Plenum, the University's Continuing Education Division has also purchased 183 additional copies at reduced cost. Using address labels furnished by the University, Plenum is distributing nonduplicating copies to coauthors, Advisory Committee members, Session Chairmen, and other qualified registrants.

The bulk shipped balance are being distributed by the co-chairmen to sponsors, to university administrators, etc.

By arrangement with the editors, Plenum has also agreed to furnish complimentary copies to 21 outstanding ceramic educators, researchers, editors, etc., around the world who were not themselves directly involved with the conference. Recipients of these copies are in the United States (3), England (2), France (1), Germany (3), Italy (1), Yugoslavia (2), Russia (2), Australia (1), Japan (3), and the Peoples' Republic of China (3).

TABLE I. SUMMARY OF COSTS AND SOURCES FOR PLANNING, ORGANIZING AND PUBLICIZING THE CONFERENCE, AND FOR EDITING THE PROCEEDINGS

	ERSD 609 Office of the Dean School of Engineering N. C. S. U.	Trust 17390 U.S. Energy Research & Development Admin. (DOE)	Trust 17377 U.S. Office of Naval Research	Trust 17399 U.S. Army Research Office	Totals
Staff & Student Salaries	844.82	719.70	973.49	187.50	2,725.51
Supplies	97.60*	449.75	287.48	4.76	839.59
Postage & Telephone	381.10*	120.33	103.48	457.09	1,062.00
Travel					
Local	-0-	-0-	1.13	7.50	8.63
Domestic (5 Contributors)	-0-	1,387.48	-0-	-0-	1,387.48
Foreign (6 Contributors)	-0-	-0-	2,765.06	4,282.69	7,047.75
Printing	-0-	1,746.57	551.45	24.30	2,322.32
General Expense	174.83*	352.33	-0-	-0-	527.16
Staff Fringe Benefits	49.43	33.10	53.66	2.00	138.19
Staff & Student Overhead @ 29.42% of Salary & Wages	248.54	211.74	286.38	55.16	801.82
Subtotal, Federal Support	-0-	5,021.00	5,021.00	5,021.00	15,063.00
University Cost Sharing					
Faculty Salaries	11,602.60	3,790.63	3,721.12	2,709.13	21,823.48
Faculty Fringe	1,972.44	644.40	483.74	352.18	3,452.76
Faculty Overhead	3,413.48	1,115.20	1,094.75	797.03	6,420.46
Subtotal, University Support	18,784.84	5,550.23	5,299.61	3,858.34	33,439.02
Less reimbursed expenses*	653.53				Gross 48,556.02
NET TOTALS	18,131.31	10,571.23	10,320.61	8,879.34	653.53 47,902.49

* Startup expense items were subsequently reimbursed by Division of Continuing Education from Conference Registration Fees.

TABLE II SUMMARY OF INCOME AND EXPENSES FROM REGISTRATION FEES,
DIVISION OF CONTINUING EDUCATION

I. Income from Registration Fees \$14,974.00

141 registrants paid registration fees, and 46 presenters of papers, representatives of sponsoring agencies, conference staff members and distinguished guests were registered gratis. In addition, some 15 key members of the University administration attended one or more of the conference reception, lunch, or dinner functions.

II. Expenses

1. Program Planning and Direction

a. Honoraria (3)	1,200.00
b. Lunch, Planning Committee	10.40
c. Telephone, Postage	431.10*
d. Duplication	174.83*
e. Supplies	<u>97.60*</u>

1,913.93

2. Conducting the Conference
Division of Continuing Education

a. Management, Space and Facilities	1,400.00
b. Food and Refreshment	
1. Coffee Breaks (6)	741.25
2. Luncheons (3)	2,033.00
3. Conference Dinner	1,887.27
4. Conference Reception	<u>746.11</u>

6,807.63

3. Registration Packets and Copies of Published Proceedings

a. Registration Packets	360.00
b. Copies of Published Proceedings	<u>4,948.32</u>

5,308.32

4. Transportation
Shuttle Bus Service

336.71

336.71

5. Miscellaneous Items

a. Plant Rental	106.98
b. Staple guns, tacks, tape, etc.	50.00
c. General expenses	<u>100.00</u>

256.98

5. Postage
Response letters to registrants

28.50

28.50

Total, Expenses

14,652.07

14,652.07

III. Balance (Reserved for future use in arranging a related ceramic conference)

321.93

*Includes reimbursement to ERSD 609 for startup expense items; see asterisks, Table I.

THE FOURTEENTH UNIVERSITY CONFERENCE ON CERAMIC SCIENCE
"PROCESSING OF CRYSTALLINE CERAMICS"
NOVEMBER 7 - 9, 1977

REGISTRATION LIST

Harlan H. Anderson
University of Missouri
107 Fulton Hall
Rolla, Missouri 65401

Paul F. Becher
Naval Research Office
Code 6362
Washington, DC 22375

James V. Biggers
Penn State University
University Park, Pennsylvania 16802

V. Boldyrev
National Academy of Sciences
National Research Council
2101 Constitution Ave.
Washington, DC 20418

Calvin H. Carter, Jr.
B-16 E.S. King Village
Raleigh, NC 27607

Jeffrey L. Church
113 N. 1st Street
Springlake, NC 28390

Dick Bradt
Penn State University
118 M. Industrial Building
University Park, Pennsylvania 16802

James P. Canner
AVX Ceramics
P. O. Box 867
Myrtle Beach, South Carolina 29577

R. M. Cannon, Jr.
Professor of Ceramics
MIT
Arlington, Massachusetts 02174

Sopa Chevacharoekul
P 28 E - S King Village
Raleigh, NC 27706

Uma Chowdhry
DuPont
356/327 Central Research Division
Wilmington, Delaware 19898

Norman Clark
14 Executive Parkway
Atlanta, Georgia 3030-

Reynier W. Dam
Advisory Engineer
Neighborhood Rd.
Kingston, New York 12403

Frank Dajcar
Arnold Engineering Company
Sevierville, Tennessee 37862

Timothy J. Earley
2620 Mayview Rd.
Raleigh, NC 27607

Maria-Luise Fiedler
N. C. State University
3145 Burlington Lab
Raleigh, NC 27607

V. D. Frechette
Alfred University
22 S. Main St.
Alfred, New York 14502

Ron Garvie
Csiro
P. O. Box 4331
Melbourne, Australia 3001

Ludwig J. Gauckler
Max-Planck-Institute
175 Buesnauerstr.
Stuttgart, West Germany

Billy M. Gay
N. C. State University
P. O. Box 5995
Raleigh, NC 27607

Peter J. Gielisse
University of Rhode Island
Materials Engineering Dept.
Kingston, Rhode Island 02881

Ronald S. Gordon
University of Utah
Dept. of Materials Science & Engineering
Salt Lake City, Utah 84112

Leib Hermansson
Penn State University
116 Min. Ind. Building
University Park, Pennsylvania 16801

James J. Hodson
130 Hawthorne Rd., Room 2
Raleigh, North Carolina 27606

Robert Holman
Xerox Corporation
Rochester, New York 1460-

Jake Hooks
106 E S King Village
Raleigh, NC 27607

Robert S. Hower
AVX Ceramics
Box 687
Myrtle Beach, South Carolina 29577

Orville Hunter, Jr.
Iowa State University
110 Engineering Annex
Ames, Iowa 50011

Ken Jack
University of Newcastle
Newcastle Upon Tyne
Newcastle, England

Paul F. Johnson
University of Florida
Dept. Materials Science & Engineering
Gainesville, Florida 32611

Robert N. Katz
AMMRC
Ceramics Research Division
W. Martown, Massachusetts 02172

Bobby Wayne Ketner
7790 Ketner St.
Rural Hall, NC 27045

Kenneth R. Kinsman
Electric Power Research Institute
P. O. Box 10412
Palo Alto, California 94303

W. Wurth Kriegel
3501 - 26th Pl. W. #525
Seattle, Washington 98199

Reginald W. McCulloch
Oak Ridge National Lab
P. O. Box Y
Oak Ridge, Tennessee 37831

Goeffrey S. McGaughey
N. C. State University
Room 4, Riddick Annex
Raleigh, NC 27607

H. Christopher McGowan
Engelhard Min. & Chem.
Edison, NJ 08817

Curtis P. Mabie
American Dental Association
National Bureau of Standards
Washington, DC 20234

Gary L. Messing
University of Florida
Dept. of Mat. Sci. & Engineering
Gainesville, Florida 32611

Gerald R. Miller
University of Utah
Dept. of Mat. Sci. & Engineering
Salt Lake City, Utah 84112

Jerry K. Moore
130 Hawthorne Rd.
Raleigh, NC 27605

P. E. D. Morgan
University of Pittsburgh
Pittsburgh, Pennsylvania 15261

Michael R. Notis
Lehigh University
452 Whitaker Lab
Bethlehem, Pennsylvania 18015

George Y. Onoda, Jr.
University of Florida
Dept. of Mat. Sci & Engineering
Gainesville, Florida 32611

Elizabeth Fort Reynolds
G-22 E S King Village
Raleigh, NC 27607

Walter R. Ott
Rutgers University
Piscataway, New Jersey 08854

Max Paulus
CNRS
Paris, France

Roy Rice
Naval Research Office
Washington, DC 20375

Thomas McCarroll Shaw
University of California
Berkeley, California 94709

Wilbur C. Simmons
A. F. Office of Scientific Research
Bldg. 410
Washington, DC 20332

Eric C. Skaar
AC Sparkplugs
1300 N. Dort Highway
Flint, Michigan 4850-

Hans H. Stadelmaier
906 Brooks Ave.
Raleigh, NC 27607

Craig J. Stoneback
Engelhard Min. & Chem.
Menlo Park
Edison, New Jersey 08817

Robert F. Stoops
N. C. State University
Engineering Research Services Div.
Raleigh, NC 27612

E. Dow Whitney
University of Florida
Dept. of Mat. Sci & Engineering
Gainesville, Florida 32611

O. J. Whittemore
University of Washington
303 Roberts, FBIO
Seattle, Washington 98195

Robert Beresford
DuPont
513 Defoe Rd.
Hockessin, Delaware 19707

Robert Savage
U. S. Army Research & Div. Comm.
DRLEL - TL - ESA
Ft. Monmouth, N. J. 07703

William W. Austin, Head
Dept. Materials Engineering
North Carolina State University

Y. S. Kim
Bell Laboratories
Allentown, Penn. 18103

Gene Kendall
3410 Hillsborough St.
Raleigh, North Carolina 27607

THE FOURTEENTH UNIVERSITY CONFERENCE ON CERAMIC SCIENCE
"PROCESSING OF CRYSTALLINE CERAMICS"
NOVEMBER 7 - 9, 1977

PRE-REGISTRATION LIST

Larry A. Addington
Eagle-Picher Industries, Inc.
P. O. Box 1090
Miami, Oklahoma 74354

Rex Ashbrook
Kennametal, Inc.
P. O. Box 639
Greensburg, Pennsylvania 15601

Bruce M. Barnes
Magnetics Division of Spang, Inc.
P. O. Box 391
Butler, Pennsylvania 16001

Aleksei Belyakov
Research Fellow Institution
MIT - Dept. of Materials Science & Engineering
Cambridge, Massachusetts 02139

B. F. Bentely
General Electric Company
P. O. Box 780
Wilmington, NC 28401

Philip L. Berneburg
Sylvania
Towanda, Pennsylvania 18848

Nutal C. Bhiwandker
Data Magnetics
355 Maple Ave.
Torrance, California 90505

Bruce Biddulph
General Electric Co.
1099 Ivanhoe Rd.
Cleveland, Ohio 44110

William R. Bitler
Penn State University
219 Mineral Ind. Bldg.
University Park, Pennsylvania 16802

John F. Blackmer
Pyromatics, Inc.
1348 E. 133rd. St.
Cleveland, Ohio 44112

Robert J. Bouchard
DuPont
DuPont Experimental Station
Wilmington, Delaware 19898

R. Jack Bragg
General Electric Company
P. O. Box 780
Wilmington, NC 28401

Amarjit S. Brar
MPI Sub Control Data Corp.
7801 Computer Ave.
Minneapolis, Minnesota 55435

William T. Brodie
Mansfield Sanitary, Inc.
150 E. First St.
Perrysville, Ohio 44864

Jesse J. Brown, Jr.
Virginia Polytechnic Institute
302 Holden Hall
Blacksburg, Virginia 24060

W. Roger Cannon
MIT - Dept. of Materials Science
MIT 12-009
Cambridge, Massachusetts 02139

Frans M. A. Carpay
Philips Research Laboratories
Eindhoven, The Netherlands 040-793155

Judith Ann Castle
Kaiser Aluminum & Chemical Corp.
P. O. Box 1031
Baton Rouge, Louisiana 70821

David R. Clarke
Rockwell International
1049 Camino Dos Rios
Thousand Oaks, California 91360

Carl G. Collins
General Electric Company
P. O. Box 780
Wilmington, North Carolina 28401

Hubert H. Davis, Jr.
Babcock & Wilcox Company
Lynchburg Research Center
Lynchburg, Virginia 24505

H. M. Davis
UNC-Chapel Hill
New Hope Dr., Rt. 2
Chapel Hill, North Carolina 27514

Robert F. Davis
N. C. State University
2158 Burlington Lab.
Raleigh, North Carolina 27607

Frank G. Daucar
Arnold Engineering Company
Sevierville, Tennessee 37862

John Day
Union Carbide
19 Alpine Way, Box 5928
Greenville, South Carolina 29606

Lutgard C. DeJonghe
Cornell University
226 Bard Hall
Ithaca, New York 14853

Paul J. Densley
Westinghouse Hanford
P. O. Box 1970
Richland, Washington 99352

Charles C. Dickinson
Kohler Company
Slip & Glaze Production
Kohler, Wisconsin 53044

Sam DiVita
U. S. Army Electronics Command
Electronics Tech. & Devices Lab.
Fort Monmouth, New Jersey 07703

Melvyn Dixon
Bell Laboratories
555 Union Blvd.
Allentown, Pennsylvania 18103

Stephen L. Dole
General Electric Co.
Room 3C6, Bldg. K-1
Schenectady, New York 12301

John Doyle Drew
Indiana General
Craws Mill Rd.
Keasbey, New Jersey 08832

John L. Dynan
MPI Sub. Control Data Corp.
7801 Computer Ave.
Minneapolis, Minnesota 55435

David S. Eddy
General Motors Research
General Motors Technical Center
Warren, Michigan 48090

E. W. Fitzsimmons
General Electric Co.
Box 780
Wilmington, North Carolina 28401

Franklin C. Fulson
NL Industries, Inc.
Box C, Bridge Station
Niagara Falls, New York 14305

A. R. Gaddipati
General Electric Co.
1099 Ivanhoe Rd.
Cleveland, Ohio 44110

Timothy J. Gallivan
General Electric Co.
P. O. Box 780 K-37
Wilmington, North Carolina 28401

Arno Gatti
General Electric Co.
P.O. Box 8555
Philadelphia, Pennsylvania 19101

Alvin P. Gerk
The Carborundum Company
P.O. Box 337
Niagara Falls, New York 14302

B. B. Gbate
Bell Telephone Laboratories, Inc.
555 Union Blvd.
Allentown, Pennsylvania 18103

Irwin Gordon
RCS Corp.
658 Rosedale Road
Princeton, New Jersey 08540

Stuart Gordon
Krystinel Corp.
Fox Island Road
Port Chester, New York 10573

Robert Gottschall
Division Basic Energy Sciences
18700 Walkers Choice, #711
Jaiethersburg, Maryland 20760

Robert F. Grady III
Martin Marietta Chemicals
Refractories Division
Executive Plaza II
Hunt Valley, Maryland 21030

Thomas J. Gray
Olin Corporation
91 Shelton Ave.
New Haven, Connecticut 06511

John W. Halloran
Pennsylvania State University
119 Mineral Industries Bldg.
University Park, Pennsylvania 16802

Bernie H. Hamling
Warwick
110 N. Main Street
Florida, New York 10921

Thomas M. Hare
North Carolina State University
Engineering Research
2142 Burlington
Raleigh, North Carolina 27607

John H. Harrington
METCO, Inc.
1101 Prospect Ave.
Westbury, New York 11590

Hans S. Hartmann
Dupont
Experimental Station, E302/224
Wilmington, Delaware 19898

Bruce A. Higley
Rockwell Hanford Operations
2750E/Trio 200 East
Richland, Washington 99352

George A. Hill
General Electric
P.O. Box 780
Wilmington, North Carolina 28401

Abe Hiroshi
Asahi Glass Co.
543 Sanmajcho, Kanagwaku
Yokohama, Japan

Roy C. Holmes
NL Industries
Box C Bridge Station
Niagara Falls, New York 14305

H. J. Van Hook
Raytheon Company, Research Division
28 Seyon Street
Waltham, Massachusetts 02154

M. L. Huckabee
North Carolina State University
Engineering Research
2147 Burlington
Raleigh, North Carolina 27607

Coy L. Huffine
IBM Corp., Dept. 318
3605 Hwy 52 N
Rochester, Minnesota 55901

Winfried J. Huppmann
Max-Planck-Institute for Metals Research
Buesnauerstr. 175
700 Stuttgart 80, West Germany

Dr. John Hurt
ARO
P.O. Box 12211
Research Triangle Park,
North Carolina 27709

Mark Alan Janney
G. E. Corporate R & D
P.O. Box 8
Bldg. K-1, Rm. 3C12
Schenectady, New York 12301

Arun D. Jatkari
ESB, Inc.
19 W. College Ave.
Yardley, Pennsylvania 19067

David W. Johnson, Jr.
Bell Laboratories
Room 6D-305
Murray Hill, New Jersey 07974

D. Lynn Johnson
Northwestern University
2145 Sheridan Road
Evanston, Illinois 60291

D. Ray Johnson
Oak Ridge National Laboratory
P.O. Box X
Oak Ridge, Tennessee 37830

Bobby L. Joyner
Sprague Electric Company
6th and Beech Street
Grafton, Wisconsin 53024

James C. Kenney
RCA CE Div.
600 N. Sherman Dr.
Indianapolis, IN 46201

W. Terry Kiger
Western Gold and Platinum
477 Harbor Blvd.
Belmont, California 94002

Gary A. Kos
Ferro Corp.
Box 979, 2000 Harvey Ave.
East Liverpool, Ohio 43920

Bernard M. Kulwicki
Texas Instruments Incorporated
34 Forest Street MS 10-13
Attleboro, Massachusetts 02730

Alfred M. Laing
Magnetics Division of Spang Industries
P.O. Box 391
Butler, Pennsylvania 16001

Fred F. Lange
Rockwell International
1049 Camino Dos Rios
Thousand Oaks, California 91360

Harry M. Laska
General Electric
1099 Ivanhoe Road
Cleveland, Ohio 44110

James N. Lingscheit
Ford Motor Company
P.O. Box 2053, Room 2075
Dearborn, Michigan 48121

James M. Lukacs
Battelle Northwest Co.
Box 999
Richmond, Washington 99352

Daniel W. Luks
Daniel W. Luks, Inc.
P.O. Box 56
Frenchtown, New Jersey 08825

Marvin Lunde
DFC Ceramics Inc.
P.O. Box 110
Canon City, Colorado 81212

Larry G. McCoy
Battelle-Columbus Laboratories
505 King Ave.
Columbus, Ohio 43201

William J. McDonald
3M Center
Building 251-1
St. Paul, Minnesota 55101

M. G. McLaren
Rutgers University
Department of Ceramics
New Brunswick, New Jersey 08903

William S. Machin
Babcock & Wilcox
P. O. Box 1260
Lynchburg, Virginia 24505

Edward L. Manigault
Taylor Refractories
P. O. Box 44040
Cincinnati, Ohio 45244

James Maselli
W. R. Grace Company
6413 Amherst Avenue
Columbia, Maryland 21044

H. Moertel
University of Erlangen-Nurnberg
Erlangen, Germany

C. S. Morgan
Oak Ridge National Laboratory
P. O. Box X
Oak Ridge, Tennessee 37830

Vernon Morton
RCA - CE Division
600 N. Sherman Drive
Indianapolis, Indiana 46201

Herbert Moss
RCA
307 Saly Road
Yardley, Pennsylvania 19067

K. M. Nair
University of Cincinnati
Dept. of Materials Science
Cincinnati, Ohio 45221

Dale E. Niesz
Battelle-Columbus Division
Materials Technology Dept.
Columbus, Ohio 43201

Phillip Ormsby
US Army Missile Research & Dev. Command
DRDMI-TL (Building 5400)
Redstone Arsenal, Alabama 35809

Kenneth E. Owens
3M Center
St. Paul, Minnesota 55101

Hayne Palmour III
N. C. State University
2140 Burlington Lab.
Raleigh, North Carolina 27607

Joseph A. Pask
University of California
Materials & Molecular Res. Division
Berkeley, California 94720

A. E. Pasto
Oak Ridge National Laboratory
P. O. Box X
Oak Ridge, Tennessee 37830

Stane Pejovnik
Institute T. Stefan
Jamova 39
61000 Ljubljana, Yugo

Joseph L. Pentecost
Georgia Tech
Atlantic Drive
Atlanta, Georgia 30332

William Peskin
ESB, Inc.
19 W. College Ave.
Yardley, Pennsylvania 19067

Girard W. Phelps
Rutgers University
P. O. Box 909
Piscataway, New Jersey 08854

Henry R. Povolny
Brush Wellman, Inc.
Elmore, Ohio 43416

Svante Prochazka
General Electric Co.
P. O. Box 8
Schenectady, New York 12301

Joseph W. Proske
Stackpole Carton Co.
201 Stackpole St.
St. Marys, Pennsylvania 15857

Rolf Ramelmeier
W. R. Grace & Co.
9221 Mellenbrook Rd.
Columbia, Maryland 21043

Robert F. Rea
5400 Lanelake Rd.
Bloomfield Hills, Michigan 48013

F. G. Recny
General Electric Co.
Syracuse, New York 13201

James S. Reed
Alfred University
15 Terrace Street
Alfred, New York 14802

William H. Rhodes
GTE Laboratories, Inc.
40 Sylvan Rd.
Waltham, Maryland 02154

Hal H. Rice
General Motors Res. Lab.
121 Mile & Mound Rds.
Warren, Michigan 48090

Truman C. Rutt
NL Industries -ICD Ceramics
Box C, Bridge Station
Niagara Falls, New York 14305

Paul E. Scheerer
Martin Marietta Labs.
1450 S. Rolling Rd.
Baltimore, Maryland 21227

Curtis Scott
General Electric Co.
Comp. #1362, Nela Park
Cleveland, Ohio 44112

Sam Shinozaki
Ford Motor Company
P. O. Box 2053
Dearborn, Michigan 48121

Jack D. Sibold
Coors Porcelain Company
600 Ninth Street
Golden, Colorado 80401

J. Thomas Smith
GTE Laboratories, Inc.
40 Sylvan Rd.
Waltham, Maryland 02154

Richard H. Smoak
The Carborundum Co.
P. O. Box 1054
Niagara Falls, New York 14302

Joseph T. Sobon
IBM
Dept. 950, Bldg. 330-146
Hopewell Jct., New York 12533

Jacob J. Stiglich
Eagle-Picher Industries, Inc.
P. O. Box 1090
Miami, Oklahoma 74354

David P. Stinton
Union Carbide
P. O. Box X
Oak Ridge, Tennessee 37830

D. M. Strachan
Lockwell Hanford Operations
222-S Bldg. 200-West Area
Richland, Washington 99352

William R. Swiss
IBM Corp.
Dept. 950, Bldg. 330-146
Hopewell Jct., New York 12533

V. J. Tennery
Oak Ridge National Laboratory
P.O. Box X
Oak Ridge, Tennessee 37830

Mathew B. Thomas
Rensselaer Polytechnic Institute
Room 308, Materials Research Center
Troy, New York 12181

Wayne D. Tuohig
Bendix Corporation
Bendix Center
Southfield, Michigan 48076

Ellen A. Uschak
Carborundum Company
Box 311
Latrobe, Pennsylvania 15650

Johan J. VanAlphen
The Arnold Engineering Company
P.O. Box G
Marengo, Illinois 60152

Dennis Vfechnicki
DRXMR-EO
Army Materials and Mechanics Research Center
Watertown, Massachusetts 02172

Roger Whalley
Ferro Corp.
661 Willet Road
Buffalo, New York 14218

Ben Wilcox
National Science Foundation
1800 G Street NW
Washington, D.C. 20050

Man F. Yan
Bell Labs
600 Mountain Ave.
Murray Hill, New Jersey 07974

Curtis E. Zimmer
Babcock & Wilcox Co.
Lynchburg Research Center
Box 1260
Lynchburg, Virginia 24505