

AD-A069 145

TEXAS UNIV AT AUSTIN APPLIED RESEARCH LABS
QUARTERLY PROGRESS REPORT NUMBER 10, 6 APRIL-5 JULY 1972.(U)
AUG 72

F/G 20/1

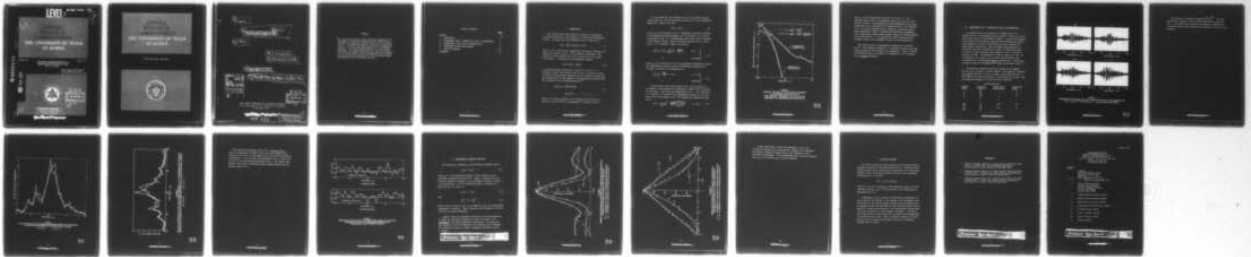
N00024-70-C-1184

NL

UNCLASSIFIED

| OF |

AD
A069145



END
DATE
FILMED

7-79
DDC

LEVEL II

MOST Project -3

1
NW

4821
1285
B.S.

**APPLIED
RESEARCH
LABORATORIES
THE UNIVERSITY OF TEXAS
AT AUSTIN**

AD A 069145

15 August 1972

Copy No. 4

**QUARTERLY PROGRESS REPORT NO. 10
UNDER CONTRACT N00024-70-C-1184
6 April - 5 July 1972**

NAVAL SHIP SYSTEMS COMMAND
Contract N00024-70-C-1184
Proj. Ser. No. SF 11121103, Task 8614

DDC FILE COPY



**DDC
RECEIVED
MAY 30 1979**

Handwritten initials

DISTRIBUTION STATEMENT A

Approved for public release;
Distribution Unlimited

Handwritten initials

~~CONFIDENTIAL~~

APPLIED
RESEARCH
LABORATORIES
THE UNIVERSITY OF TEXAS
AT AUSTIN

FOR OFFICIAL USE ONLY



11 15 August 1972

6 QUARTERLY PROGRESS REPORT ^{Number} 10
UNDER CONTRACT N00024-70-C-1184
6 April - 5 July 1972

12 24 p1

16 F 111121

17 SF 111121103

15 NAVAL SHIP SYSTEMS COMMAND
Contract N00024-70-C-1184
Proj. Ser. No. SF 11121103, Task 8614

9 Rept. for 6 Apr - 5 Jul 72.

ACCESSION for	
DTIC	White Section <input checked="" type="checkbox"/>
DDC	Buff Section <input type="checkbox"/>
UNANNOUNCED	<input type="checkbox"/>
JUSTIFICATION	
Per Hqs. on file	
BY	
DISTRIBUTION/AVAILABILITY CODES	
Dist.	AVAIL. CODE/SPECIAL
A	

DDC
RECEIVED
MAY 30 1979
REGULATED
D

APPLIED RESEARCH LABORATORIES
THE UNIVERSITY OF TEXAS AT AUSTIN
AUSTIN, TEXAS 78712

~~CONFIDENTIAL~~
404 434

^{slt}
DISTRIBUTION STATEMENT A
Approved for public release;
Distribution Unlimited

ABSTRACT

↙ The covariance functions of the fluctuating component of the narrowband reverberation envelope have been experimentally estimated and compared to the theoretical expressions appropriate to the transmitted signals. Two types of transmitted signals, cw and FM, were used to generate the reverberation processes. The scattering mechanisms were, as in previous experiments, the rough, moving surfaces of an inland lake. The results presented indicate that the normalized covariance of the envelope function of the reverberation can be reasonably predicted given the waveform of the transmitted signal that generated the reverberation process. ↗

TABLE OF CONTENTS

	<u>Page</u>
ABSTRACT	iii
I. INTRODUCTION	1
II. EXPERIMENTAL DATA: ALTERNATING FM AND cw REVERBERATION	5
III. INTENSITIES OF THE FM AND cw REVERBERATION	9
IV. EXPERIMENTAL COVARIANCE FUNCTIONS	15
V. CONCLUDING REMARKS	19
REFERENCES	21

I. INTRODUCTION

The research under this contract is centered on studying the statistical properties of the envelope of a narrowband reverberation process. We assume that the reverberation can be expressed as

$$X(t) = E(t) \cos[2\pi f_0 t + \varphi(t)] \quad , \quad (1)$$

where f_0 , $\varphi(t)$, and $E(t)$ are, respectively, the center frequency, the phase, and envelope of $X(t)$. We are primarily interested in the properties of the envelope $E(t)$ since it plays a key roll in many sonar systems. In particular the fluctuating component

$$y(t) \equiv E(t) - \langle E(t) \rangle \quad (2)$$

is the process being studied here. Given the waveform of the transmitted signal that produces $X(t)$, we seek to accurately predict the first- and second-order statistics of the stochastic process $y(t)$. Our starting point in this endeavor is the theoretical expression for the covariance of $y(t)$ obtained previously,^{1,2}

$$K_y(t_1, t_2) \equiv \langle y(t_1)y(t_2) \rangle \quad (3)$$

$$= \frac{\pi}{8} \psi k_0^2(\tau) \quad , \quad \tau = t_2 - t_1 \quad ,$$

where ψ is the mean intensity of the narrowband reverberation $X(t)$ and $k_0(\tau)$ is the envelope of the normalized covariance of $X(t)$.

It is assumed that the covariance of $X(t)$ is equivalent (within a scale factor) to the autocorrelation function $C(\tau)$ of the transmitted signal $S(t)$. Thus we can write

$$k_o(\tau) = C_o(\tau) \quad , \quad (4)$$

where $C_o(\tau)$ is the envelope of $C(\tau)$. Specifying a particular waveform of the transmitted signal determines $C_o(\tau)$ and, hence, $k_o(\tau)$ (see the introduction of Ref. 1). Alternatively, these results can be expressed in the frequency domain. Thus the intensity spectrum of $y(t)$ corresponds to a cw transmitted signal of duration T ,

$$\left. \begin{aligned} W_y(f)_{cw} &= T\psi_{cw} \frac{\pi}{(\omega T)^2} \left[1 - \frac{\sin \omega T}{\omega T} \right] \quad , \quad \omega \geq 0 \\ &= 0 \quad , \quad \text{elsewhere} \end{aligned} \right\} \quad , \quad (5)$$

where ψ_{cw} is the intensity of $X(t)$, the narrowband reverberation process. The corresponding expression for the reverberation produced by an FM signal of duration T and bandwidth W is

$$\left. \begin{aligned} W_y(f)_{FM} &= \frac{\pi\psi_{FM}}{4W} (1 - f/W) \quad , \quad 0 \leq f \leq W \\ &= 0 \quad , \quad \text{elsewhere} \end{aligned} \right\} \quad . \quad (6)$$

In the previous period the validity of Eq. (5) was tested with an ensemble of data generated by scattering cw signals from the surface of Lake Travis. The results are summarized in Fig. 1. Also shown here is a comparison of theoretical and experimental estimates of the spectrums of the time average of $y(t)$. The theoretical expression in this case is

$$W_Y(f) = \frac{1}{(\omega T)^2} \left(1 - \frac{\sin \omega T}{\omega T} \right) \frac{\sin^2(\omega T_o/2)}{(\omega T_o/2)^2} \quad , \quad \omega = 2\pi f \quad , \quad (7)$$

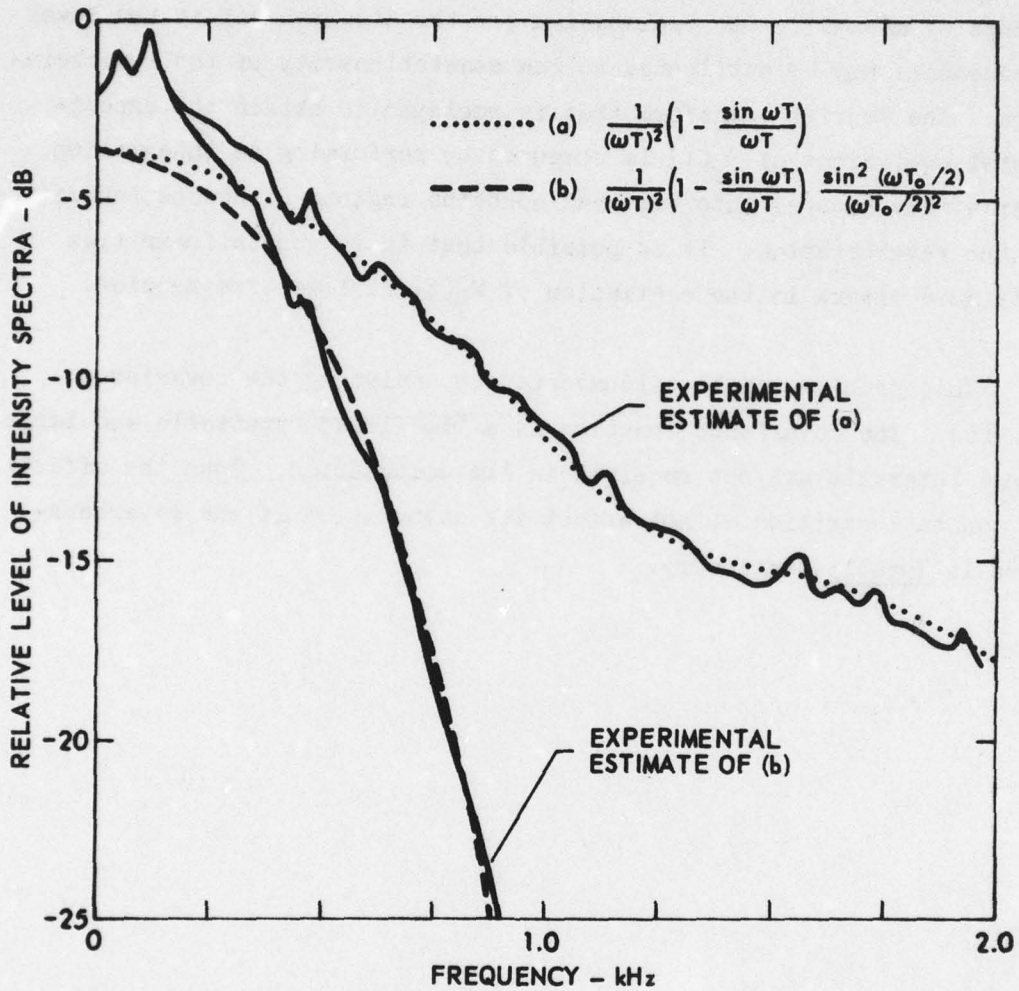


FIGURE 1
 INTENSITY SPECTRA OF FLUCTUATING COMPONENT
 OF REVERBERATION ENVELOPE (a).
 TIME AVERAGE ("SMOOTHED") OF FLUCTUATING
 COMPONENT OF REVERBERATION ENVELOPE (b).

ARL - UT
 AS-72-676
 TDP - DR
 5 - 11 - 72

where T_0 is the averaging time (see Sec. VII of Ref. 2). Good agreement between theory and experiment exists at all but the lower values of $\omega (=2\pi f)$. One explanation for the disagreement at the lower frequencies may be attributed to the nonstationarity of the reverberation. The Fourier transform that is employed to obtain the experimental equivalent of $W_y(f)$ is computed by performing an integration over a time (range) interval that contains regions of nonstationarities of the reverberation. It is possible that these nonstationarities introduce errors in the estimation of $W_y(t)$ at lower frequencies.

This problem can be circumvented by analyzing the covariance of $y(t)$. The covariance function is a "localized" statistic and large range intervals are not required in its computation. Thus the effects of nonstationarities do not affect its computation if the reverberation is locally stationary.

II. EXPERIMENTAL DATA: ALTERNATING FM AND cw REVERBERATION

An important goal of this study is to compare some of the relative merits of transmitting FM and cw signals to detect an acoustic target whose echoes are reverberation limited. A partial understanding of this phase of the problem is achieved by investigating the statistical properties of the two reverberation processes generated by these signals, respectively. Thus the rough, moving surfaces of a fresh water lake were insonified by a series of alternating FM and cw signals of equal amplitude, pulse duration (4 msec), and center frequency (80 kHz). The bandwidth W of the FM signal was 2 kHz. By alternating the two signals, two processes (FM reverberation and cw reverberation) were generated almost simultaneously. Oscilloscope tracings of some of the reverberation returns can be seen in Fig. 2.

The data were originally recorded in analog form on magnetic tape and later converted to digital samples. The quadrature components were sampled directly at a rate of 16 kHz. Each digital record is 1600 samples long which corresponds to a time extent of 100 msec. The following table summarizes the digital data on tape 698.

DIGITAL TAPE 698

Sequence Number	Quadrature Component	Reverberation Return Number	Transmitted Signal
1	X	1	cw
2	Y		
3	X	2	FM
4	Y		
.	.	.	.
.	.	.	.
315	X	198	FM
316	Y		
317	X	199	cw
318	Y		

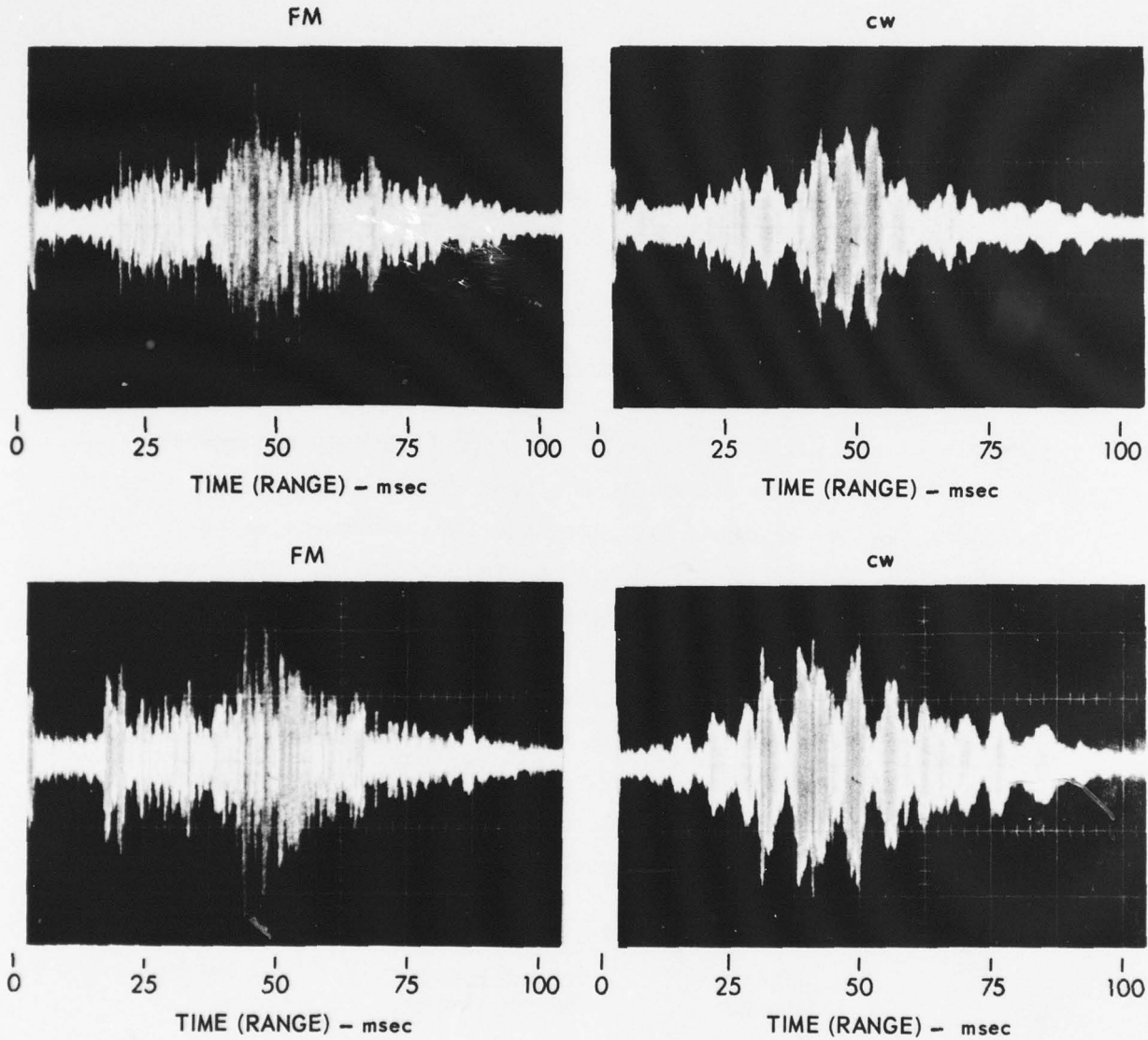


FIGURE 2
 REVERBERATION RETURNS FROM THE ROUGH SURFACE OF A LAKE INSONIFIED BY
 FM (T = 4 msec, W = 2 kHz) AND cw (T = 4 msec) TRANSMITTED SIGNALS

The envelope is obtained by computing $[X^2+Y^2]^{1/2}$. The first six envelope functions of the records on tape 618 are plotted in Fig. 3. As expected the variations with respect to range of the FM reverberation are more rapid than the variations of the cw reverberations.

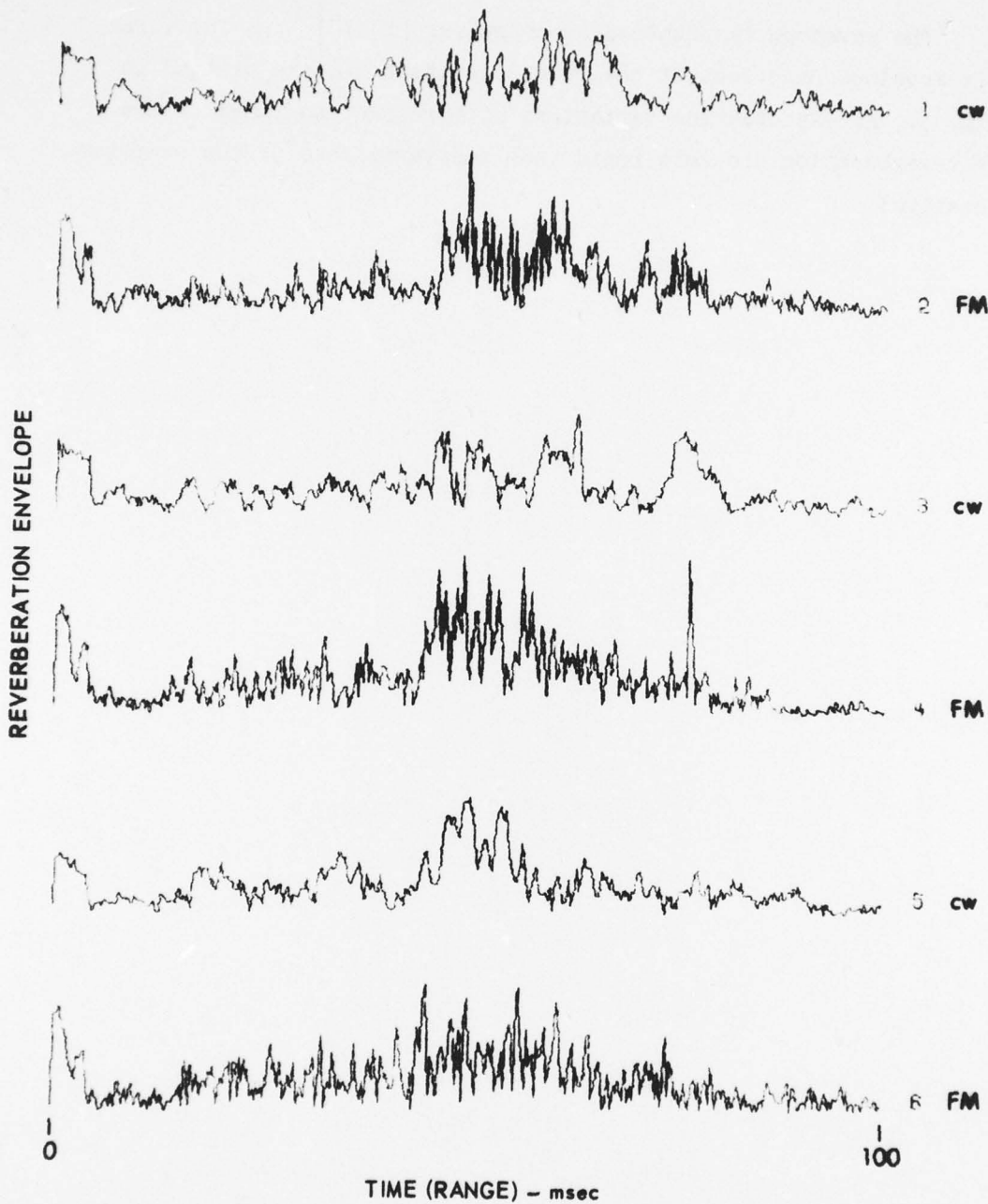


FIGURE 3
 SIX CONSECUTIVE REVERBERATION RETURNS GENERATED
 BY ALTERNATING cw AND FM TRANSMITTED SIGNALS

ARL - UT
 AS-72-941
 TDP - DR
 8 - 4 - 72

III. INTENSITIES OF THE FM AND cw REVERBERATION

The theoretical intensity of $y(t)$, the fluctuating component of the envelope $E(t)$, is (see Sec. III of Ref. 1)

$$\langle y(t)^2 \rangle = \left(2 - \frac{\pi}{2}\right) \psi \cong 0.43\psi \quad , \quad (8)$$

where

$$\psi = \langle X(t)^2 \rangle \quad (9)$$

is the intensity of the narrowband reverberation $X(t)$. Combining Eqs. (8) and (9) gives

$$\langle y(t)^2 \rangle / \langle X(t)^2 \rangle = 0.43 \quad , \quad (10)$$

which states that the ratio of these two quantities is independent of range.

In Fig. 4 the intensities of the cw and FM reverberation are plotted as functions of range. Since the FM and cw signals were of equal amplitude and pulse durations, their transmitted energies were equivalent and it is expected that the two corresponding reverberation intensities would be equal. In Fig. 4 one can see that the two intensities are approximately the same over all ranges. A similar conclusion made about the intensities of the fluctuating components is supported by the data plotted in Fig. 5.

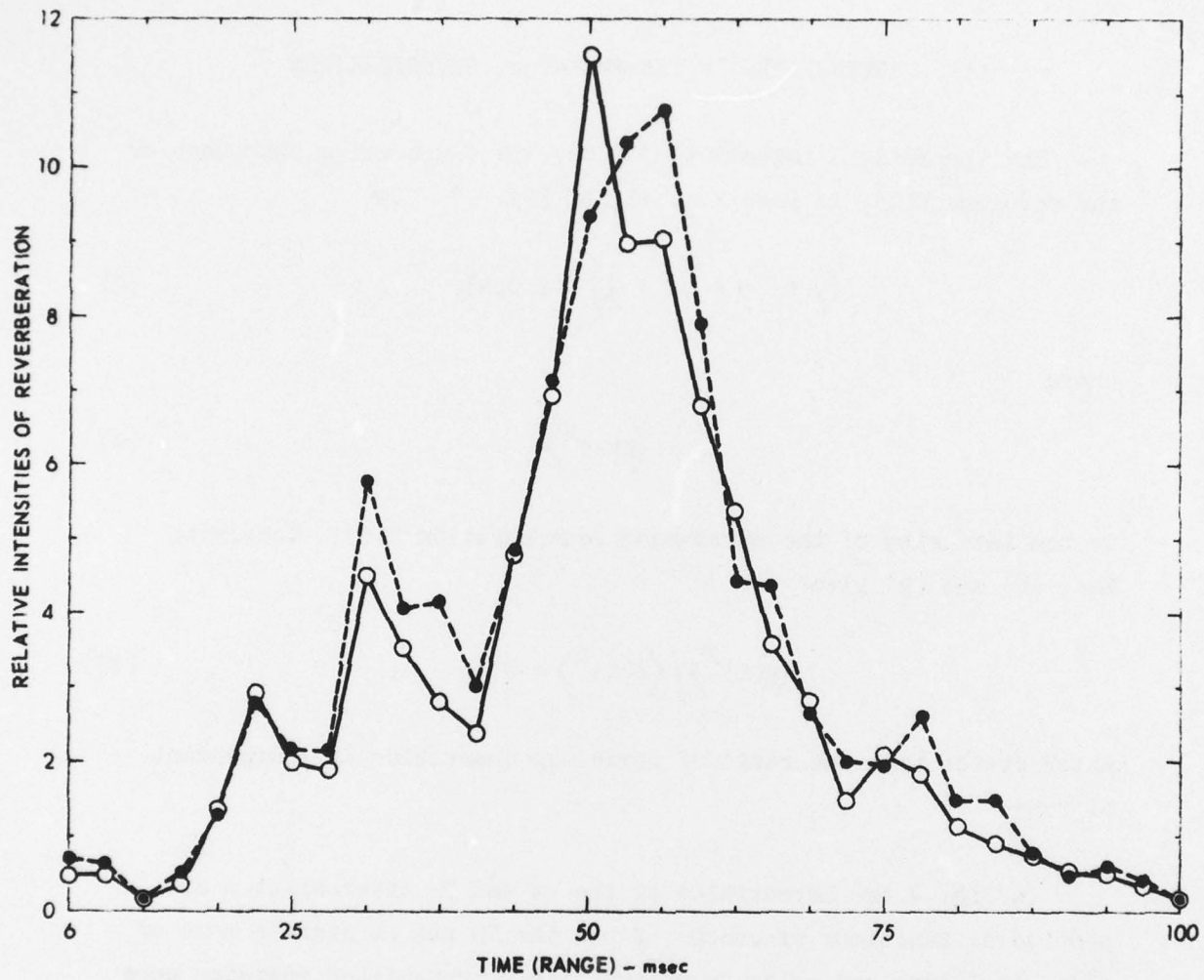


FIGURE 4
 RELATIVE INTENSITIES OF REVERBERATION PROCESSES GENERATED BY INSONIFYING
 THE ROUGH, MOVING SURFACE OF A LAKE WITH FM AND cw SIGNALS

●---● FM ○---○ cw

ARL - UT
 AS-72-942
 TDP - DR
 8-4-72

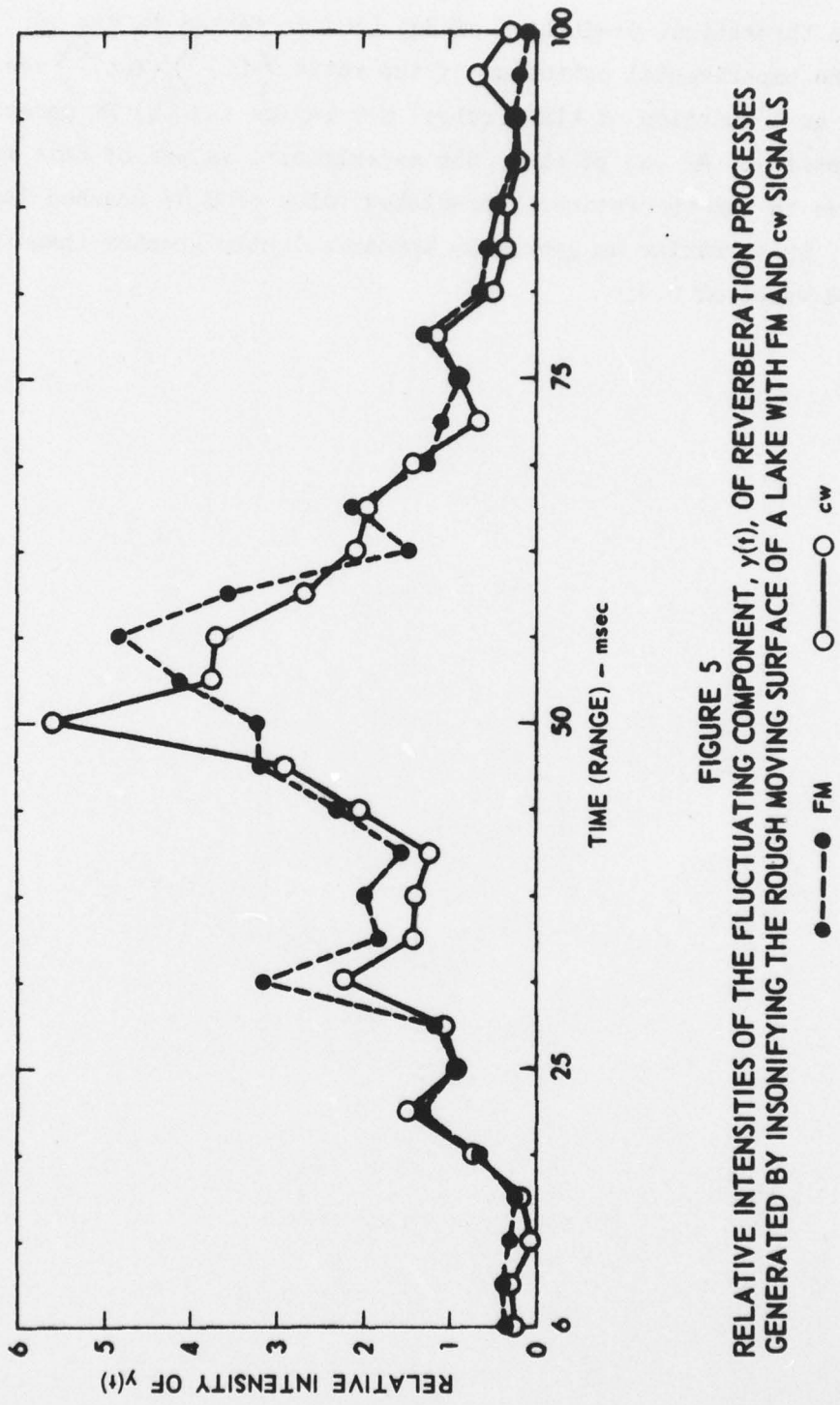


FIGURE 5
 RELATIVE INTENSITIES OF THE FLUCTUATING COMPONENT, $y(t)$, OF REVERBERATION PROCESSES
 GENERATED BY INSONIFYING THE ROUGH MOVING SURFACE OF A LAKE WITH FM AND CW SIGNALS

ARL - UT
 AS-72-943
 TDP - DR
 8-4-72

The theoretical prediction of Eq. (10) is tested in Fig. 6 where the experimental estimates of the ratio $\langle y(t)^2 \rangle / \langle x(t)^2 \rangle$ are plotted as a function of time (range) for (a) cw and (b) FM generated reverberation. As can be seen, the experimental values of this ratio are close to the theoretically predicted value of 0.43 (dashed line). However, these ratios do generally appear slightly greater than the expected value of 0.43.

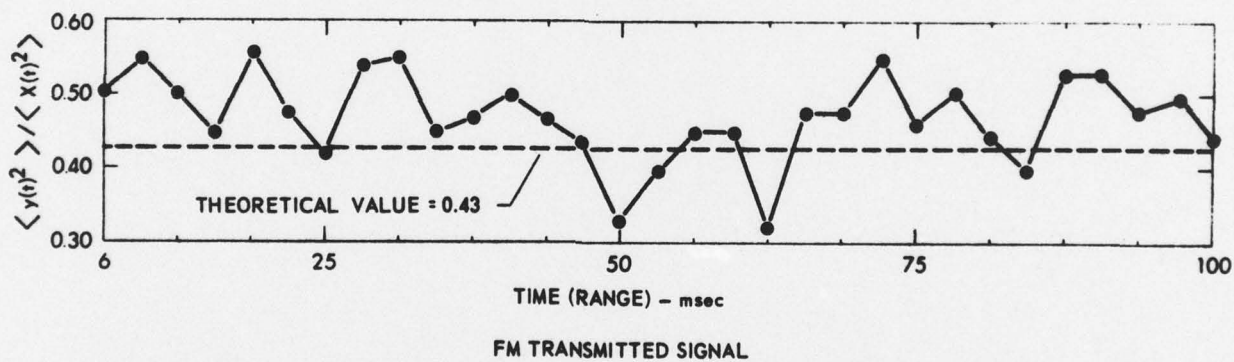
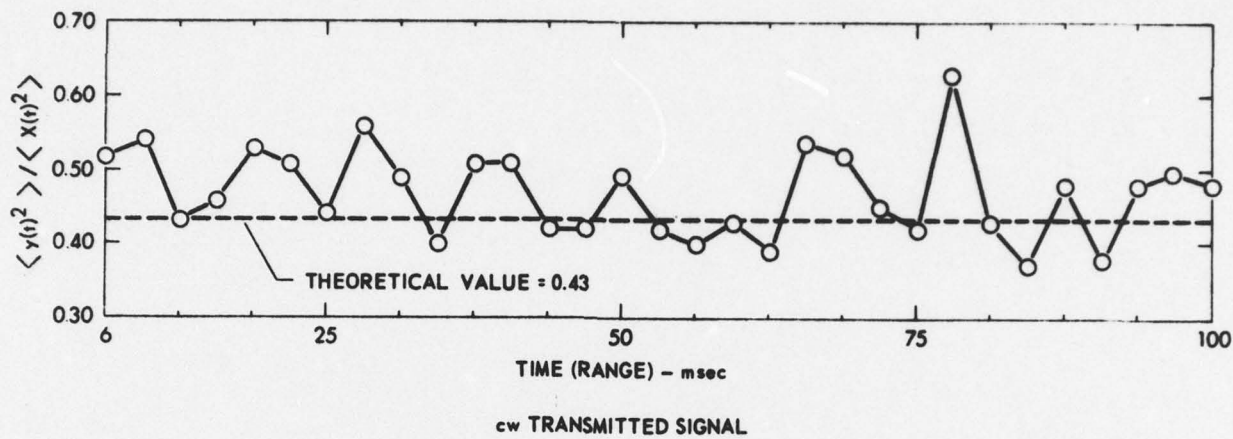


FIGURE 6
 BEHAVIOR OF $\langle y(t)^2 \rangle / \langle X(t)^2 \rangle$ AS A FUNCTION OF RANGE, WHERE $y(t)$ = FLUCTUATING
 COMPONENT OF ENVELOPE OF NARROW BAND REVERBERATION $X(t)$
 GENERATED BY cw AND FM TRANSMITTED SIGNALS

ARL - UT
 AS - 72 - 944
 TDP - DR
 8 - 4 - 72

IV. EXPERIMENTAL COVARIANCE FUNCTIONS

The theoretical covariance of the fluctuating component $y(t)$ is

$$K_y(\tau) = k_o(\tau)^2, \quad (11)$$

where $k_o(\tau)$ is the normalized envelope of the covariance of the narrowband reverberation process $X(t)$. Figure 7 compares this theoretically predicted covariance to the experimental ensemble covariance (cw reverberation). For a cw transmitted signal of duration T we have (see Sec. VI of Ref. 2)

$$k_o(\tau) = 1 - \frac{\tau}{T} \quad (12)$$

and

$$K_y(\tau) = \left(1 - \frac{\tau}{T}\right)^2. \quad (13)$$

Each of these is drawn in Fig. 7 for comparisons with the corresponding experimental covariances. These covariances were estimated at the time $t=75$ msec following transmission.

Figure 8 shows the covariance structures of the FM reverberation. To obtain the theoretical prediction of $K_y(\tau)$ the square of the experimental narrowband reverberation was computed. The reason for this approach is that the bandwidth of the FM signal was not measured with sufficient accuracy to obtain a reasonable prediction of $K_y(\tau)$ or of $K_x(\tau)$.

Preceding Page BLANK - NOT FILMED

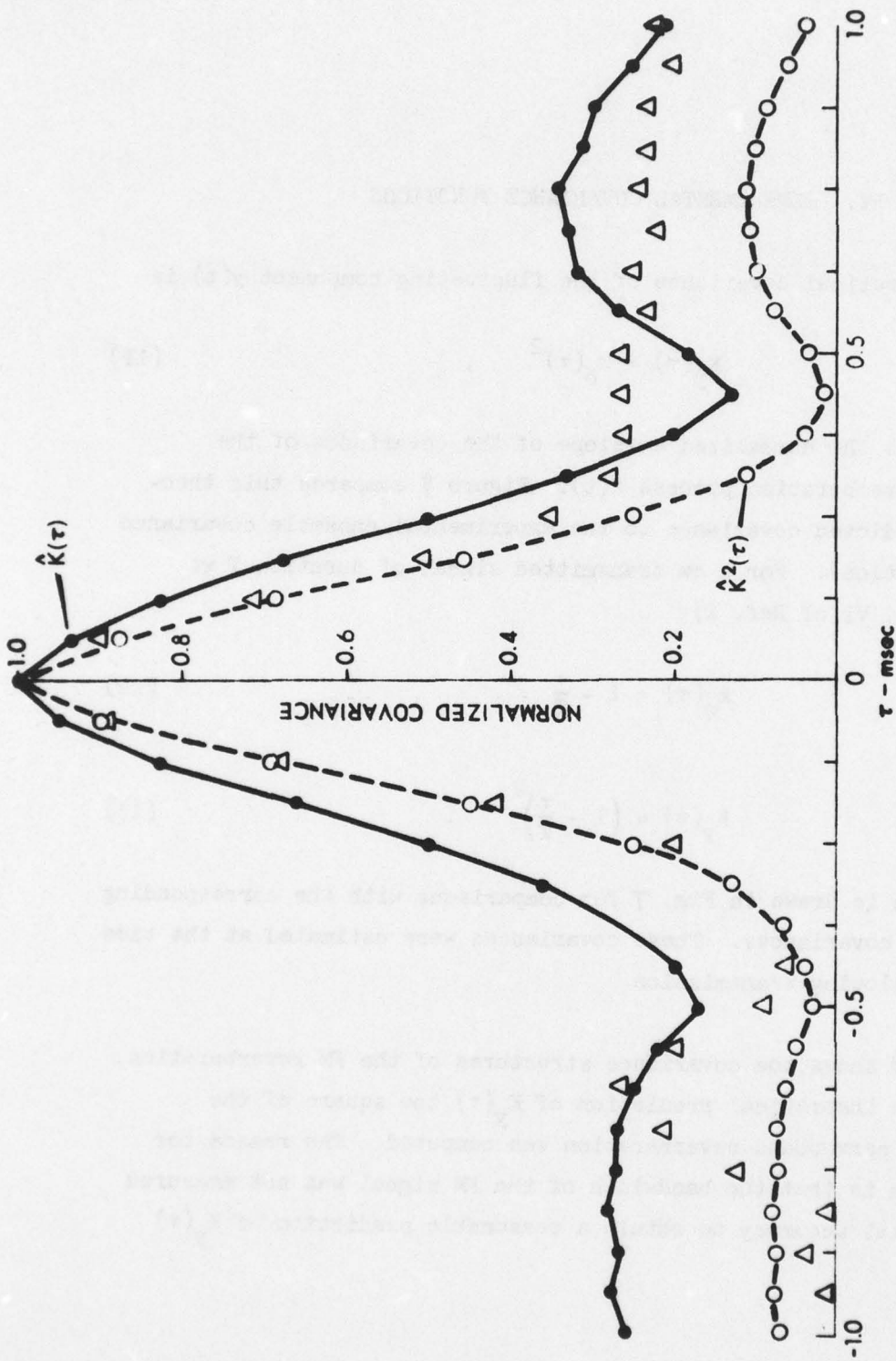


FIGURE 7
 NORMALIZED COVARIANCE FUNCTIONS OF A NARROW BAND REVERBERATION
 PROCESS (FM TRANSMITTED SIGNAL) AND ITS ENVELOPE

$\hat{K}(\tau)$ - EXPERIMENTAL COVARIANCE OF NARROW BAND REVERBERATION
 Δ - EXPERIMENTAL COVARIANCE OF REVERBERATION ENVELOPE

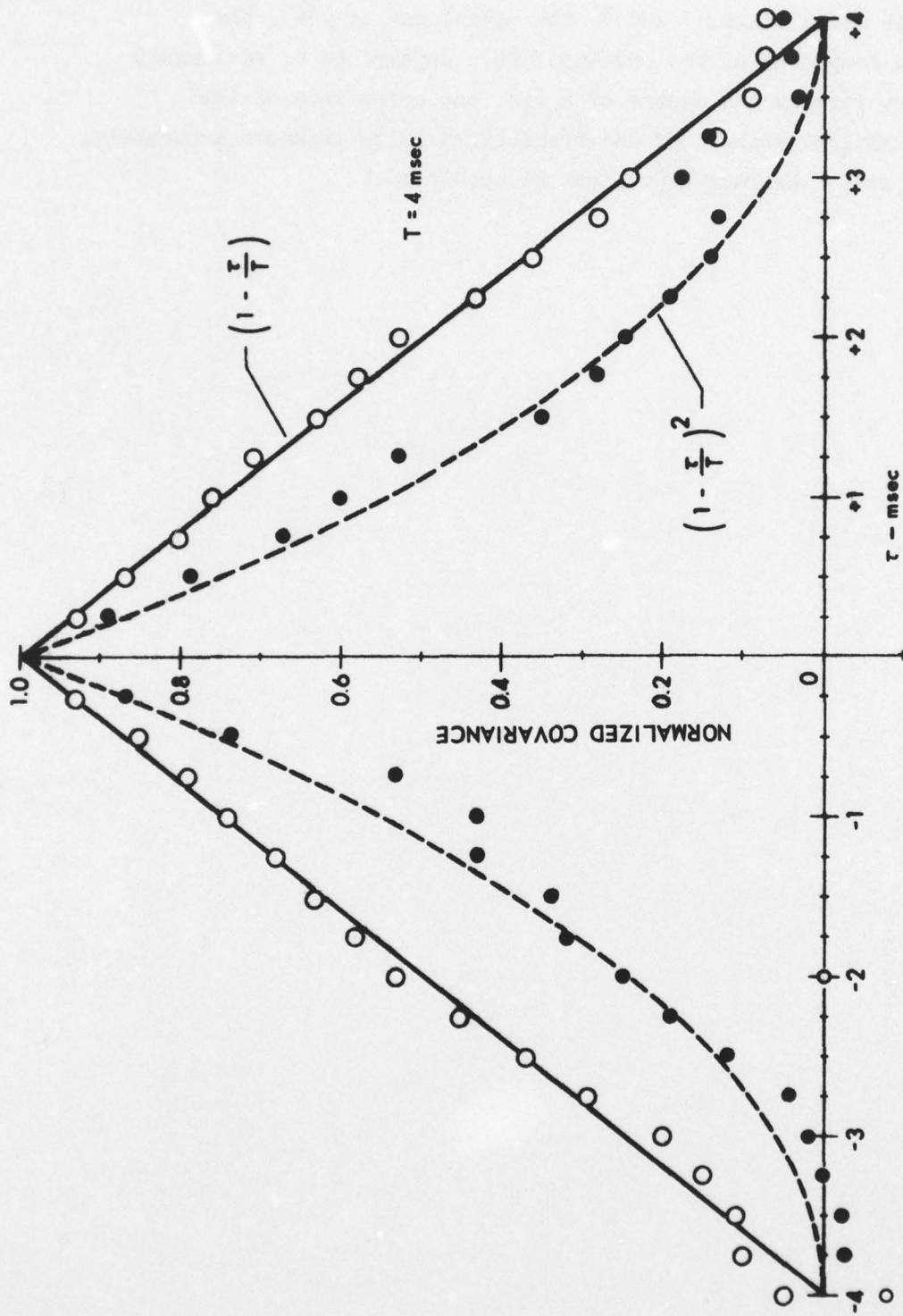


FIGURE 8
NORMALIZED COVARIANCE FUNCTIONS OF A NARROW BAND REVERBERATION PROCESS (cw TRANSMITTED SIGNAL)
 \circ - EXPERIMENTAL COVARIANCE OF NARROW BAND REVERBERATION
 \bullet - EXPERIMENTAL COVARIANCE OF REVERBERATION ENVELOPE

ARL - UT
 AS-72-946
 TDP - DR
 8-4-72

In both cases (Figs. 7 and 8) the covariance of $y(t)$, the fluctuating component of the envelope $E(t)$, appears to be reasonably predicted by forming the square of $k_o(\tau)$, the covariance of the narrowband reverberation. If the transmitted pulse is known accurately, then $k_o(\tau)$ and, therefore $K_y(\tau)$, can be predicted.

V. CONCLUDING REMARKS

The results presented in this progress report indicate that the normalized covariance of the envelope function of a narrowband reverberation process can be predicted from a knowledge of the transmitted waveform. Thus, if the autocorrelation function of the narrowband reverberation is of the form

$$K(\tau) = k_o(\tau) \cos(2\pi f_o \tau) \quad ,$$

where f_o is the center frequency of the transmitted signal, then the covariance function, $K_y(\tau)$, of the envelope of the reverberation is approximately $k_o^2(\tau)$.

A knowledge of $K_y(\tau)$ is useful in analyzing the performances of sonar receivers that extract, in some manner, their information from the envelope of the received signal (reverberation-plus-target echo). Accordingly the next and final phase of this research project will be applied to studying the properties of the reverberation envelope after it has been subjected to a time average ("smoothing"). As part of this study artificial target echoes will be added to the reverberation in both the FM and cw cases. Thus, an accurate comparison of transmitting FM and cw signals can be made in the case of a detector-averager type of receiver.

REFERENCES

1. Quarterly Progress Report No. 7 under Contract N00024-70-C-1184, 5 July - 5 October 1971, Applied Research Laboratories, The University of Texas at Austin (16 November 1971).
2. Quarterly Progress Report No. 8 under Contract N00024-70-C-1184, 5 October 1971 - 5 January 1972, Applied Research Laboratories, The University of Texas at Austin (7 January 1972).
3. Quarterly Progress Report No. 9 under Contract N00024-70-C-1184, 5 January 1972 - 5 April 1972, Applied Research Laboratories, The University of Texas at Austin (24 May 1972).

Preceding Page BLANK - NOT FILMED

15 August 1972

DISTRIBUTION LIST FOR
QUARTERLY PROGRESS REPORT NO. 10
Under Contract N00024-70-C-1184
Project Serial No. SF 11121103, Task 8614
6 April - 5 July 1972
FOR OFFICIAL USE ONLY

Copy No.

Commander
Naval Ship Systems Command
Department of the Navy
Washington, D. C. 20360
1 - 4 Attn: PMS 302-412, M. Giwer
5 - 7 Technical Library (Code 2052)

8 Office of Naval Research
Resident Representative
Room 582, Federal Building
300 East 8th Street
Austin, Texas 78701

9 Computer Science Division, ARL/UT

10 Marine Sciences Division, ARL/UT

11 Signal Physics Division, ARL/UT

12 Underwater Missiles Division, ARL/UT

13 S. Patrick Pitt, ARL/UT

14 Terry D. Plemons, ARL/UT

15 Jack A. Shooter, ARL/UT

16 Library, ARL/UT

Preceding Page BLANK - NOT FILMED