

AD-A070 437

DAVID W TAYLOR NAVAL SHIP RESEARCH AND DEVELOPMENT CE--ETC F/6 13/10
AHEAD AND BACKING OPEN WATER CHARACTERISTICS OF MODEL PROPELLER--ETC(U)
JUN 79 J G PECK

UNCLASSIFIED

DTNSRDC/SPD-0826-03

NL

| OF |
AD
A070437



END
DATE
FILMED
7-79
DDC

DTNSRDC/SPD-0826-03

LEVEL

12

**DAVID W. TAYLOR NAVAL SHIP
RESEARCH AND DEVELOPMENT CENTER**



Bethesda, Md. 20084

ADA 070437

6 AHEAD AND BACKING OPEN WATER CHARACTERISTICS
OF MODEL PROPELLER 4716-NOZZLE SYSTEM

by

10 James G. Peck

DDC
RECEIVED
JUN 26 1979
C

APPROVED FOR PUBLIC RELEASE: DISTRIBUTION UNLIMITED

12 22 p.

DDC FILE COPY

SHIP PERFORMANCE DEPARTMENT
DEPARTMENTAL REPORT

AHEAD AND BACKING OPEN WATER CHARACTERISTICS OF MODEL PROPELLER
4716-NOZZLE SYSTEM - by James G. Peck

11 JUN 1979

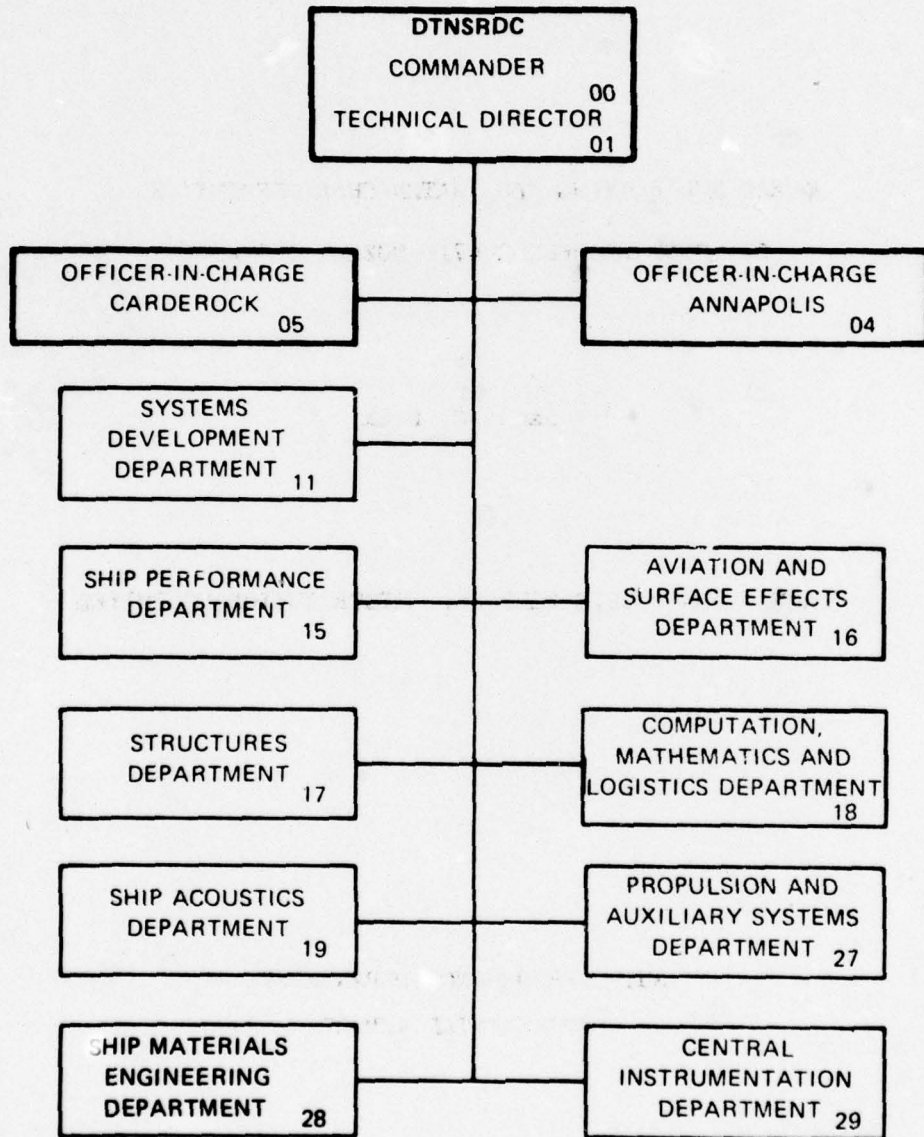
79 06 25 071

14 DTNSRDC/SPD-0826-03

389 694

Jim

MAJOR DTNSRDC ORGANIZATIONAL COMPONENTS



DTNSRDC/SPD-0826-03

AHEAD AND BACKING OPEN WATER CHARACTERISTICS OF MODEL PROPELLER
4716-NOZZLE SYSTEM - by James G. Peck

DAVID W. TAYLOR NAVAL SHIP RESEARCH AND DEVELOPMENT CENTER



Bethesda, Md. 20084

AHEAD AND BACKING OPEN WATER CHARACTERISTICS
OF MODEL PROPELLER 4716-NOZZLE SYSTEM

by

James G. Peck

APPROVED FOR PUBLIC RELEASE: DISTRIBUTION UNLIMITED

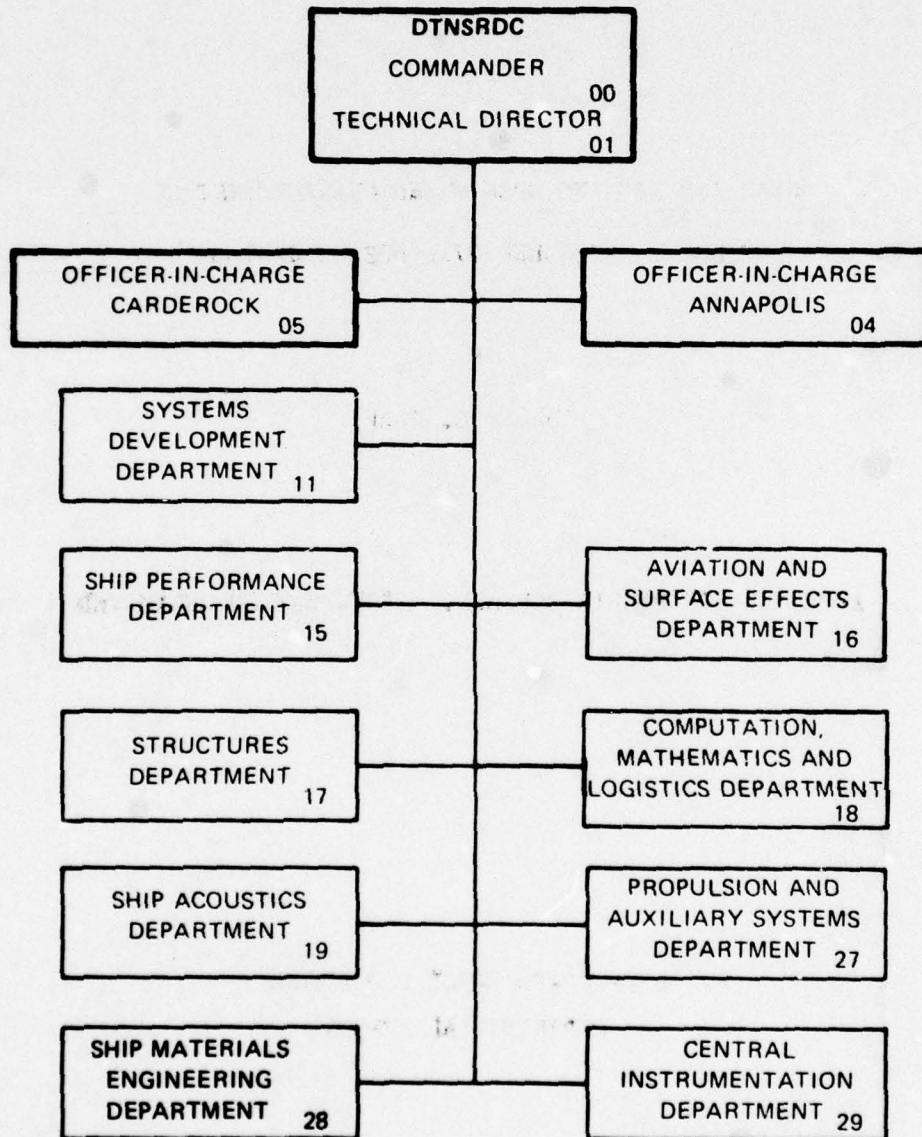
SHIP PERFORMANCE DEPARTMENT
DEPARTMENTAL REPORT

JUNE 1979

DTNSRDC/SPD-0826-03

79 06 25 071

MAJOR DTNSRDC ORGANIZATIONAL COMPONENTS



UNCLASSIFIED

SECURITY CLASSIFICATION OF THIS PAGE (When Data Entered)

REPORT DOCUMENTATION PAGE		READ INSTRUCTIONS BEFORE COMPLETING FORM
1. REPORT NUMBER DTNSRDC/SPD-0826-03/	2. GOVT ACCESSION NO.	3. RECIPIENT'S CATALOG NUMBER
4. TITLE (and Subtitle) AHEAD AND BACKING OPEN WATER CHARACTERISTICS OF MODEL PROPELLER 4716-NOZZLE SYSTEM		5. TYPE OF REPORT & PERIOD COVERED
		6. PERFORMING ORG. REPORT NUMBER
7. AUTHOR(s) James G. Peck		8. CONTRACT OR GRANT NUMBER(s)
9. PERFORMING ORGANIZATION NAME AND ADDRESS David W. Taylor Naval Ship R&D Center Bethesda, Md 20084		10. PROGRAM ELEMENT, PROJECT, TASK AREA & WORK UNIT NUMBERS Element 6000N Work Unit 1-1532-179
11. CONTROLLING OFFICE NAME AND ADDRESS Naval Ship Engineering Center, Norfolk Div. Norfolk, VA 23511		12. REPORT DATE
		13. NUMBER OF PAGES
14. MONITORING AGENCY NAME & ADDRESS (if different from Controlling Office)		15. SECURITY CLASS. (of this report)
		15a. DECLASSIFICATION/DOWNGRADING SCHEDULE
16. DISTRIBUTION STATEMENT (of this Report) APPROVED FOR PUBLIC RELEASE: DISTRIBUTION UNLIMITED		
17. DISTRIBUTION STATEMENT (of the abstract entered in Block 20, if different from Report)		
18. SUPPLEMENTARY NOTES		
19. KEY WORDS (Continue on reverse side if necessary and identify by block number) Propellers, Nozzles, Backing		
20. ABSTRACT (Continue on reverse side if necessary and identify by block number) Model Propeller 4716-nozzle system was characterized in open water, ahead and backing. Model propeller 4716 was also characterized, ahead and backing, without the nozzle. The propeller-nozzle system and propeller performance data are presented in this report. The results indicate that under heavily loaded conditions, especially in backing, the propeller-nozzle system is more efficient than the propeller alone at the same loading.		

DD FORM 1473
1 JAN 73EDITION OF 1 NOV 68 IS OBSOLETE
S/N 0102-LF-014-6601

i

UNCLASSIFIED

SECURITY CLASSIFICATION OF THIS PAGE (When Data Entered)

TABLE OF CONTENTS

	Page
LIST OF FIGURES -----	iv
LIST OF TABLES -----	iv
NOTATION -----	v
ABSTRACT -----	1
ADMINISTRATIVE INFORMATION -----	1
INTRODUCTION -----	1
PROCEDURE -----	1
PRESENTATION OF DATA AND DISCUSSION -----	2

Accession For	
NTIS GRA&I	
DDC TAB	
Unannounced	
Justification	
By _____	
Distribution/	
Availability Codes	
Dist	Avail and/or special
A	

LIST OF FIGURES

	Page
1 - Drawing of Model Propeller 4716 -----	3
2 - Drawing of Model Nozzle -----	4
3 - Model Propeller 4716 System Efficiency vs Loading Coefficient, Ahead -----	5
4 - Model Propeller 4716 System Efficiency vs Loading Coefficient, Backing -----	6

LIST OF TABLES

1 - Open Water Performance of Propeller 4716 in Nozzle, Ahead -----	7
2 - Open Water Performance of Propeller 4716, Ahead -----	8
3 - Open Water Performance of Propeller 4716 in Nozzle, Backing -----	9
4 - Open Water Performance of Propeller 4716, Backing -----	10

NOTATION

		<u>Dimensions</u>
A_E	Expanded area of propellers blades $A_E = EAR (A_O)$	ft^2, m^2
A_O	Disc area of propeller $A_O = \frac{\pi D^2}{4}$	ft^2, m^2
A_P	Projected area of propeller blades $A_P = A_E (1.067 - 0.229 P/D)$	ft^2, m^2
c	Blade section length	ft, m
$c_{0.7}$	Blade section at 0.7 radius	ft, m
D	Propeller diameter	ft, m
EAR	Expanded area ratio A_E/A_O	-
g	Acceleration due to gravity	$ft/sec^2, m/sec^2$
h	Propeller submergence	ft, m
J	Advance coefficient $J = V/nD$	-
K_T	Thrust coefficient $K_T = \frac{T_D + T_P}{\rho n^2 D^4}$	-
K_{TD}	Thrust coefficient $K_{TD} = \frac{T_D}{\rho n^2 D^4}$	-
K_T/J^2	Loading coefficient	-
K_Q	Torque coefficient $K_Q = \frac{Q}{\rho n^2 D^5}$	-
K_Q/J^3	Powering coefficient	-
n	Propeller rotational speed	$rev/sec, r/s$
P	Propeller pitch	ft, m
P/D	Pitch-diameter ratio	-
P_A	Atmospheric pressure	$lb/ft^2, N/m^2$

		<u>Dimensions</u>
P_H	Static water pressure, $P_H = \rho gh$	$\text{lb/ft}^2, \text{N/m}^2$
P_V	Vapor pressure	$\text{lb/ft}^2, \text{N/m}^2$
Q	Propeller torque	$\text{lb/ft}, \text{N} \cdot \text{m}$
Q_c	Torque load coefficient,	-
	$Q_c = \frac{2.55 K_Q}{(J^2 + 4.84)(\text{EAR})(1.067 - 0.229 P/D)}$	
R_n	Reynolds number at 0.7R	-
	$R_n = \frac{c_{0.7} v_{0.7}}{v}$	
T_D	Nozzle thrust	lb, N
T_P	Propeller thrust	lb, N
V	Velocity of boat	$\text{ft/sec}, \text{m/sec}$
$v_{0.7}$	Resultant velocity of water at 0.7 radius of propeller	$\text{ft/sec}, \text{m/sec}$
	$v_{0.7}^2 = \frac{J^2 + 4.83}{J^2} v^2$	
η	Propeller open water efficiency,	-
	$\eta = \frac{K_T}{K_Q} \frac{J}{2\pi}$	
ν	Kinematic viscosity of water	$\text{ft}^2/\text{sec}, \text{m}^2/\text{sec}$
ρ	Mass density of water	$\text{lb-sec}^2/\text{ft}^4, \text{Kg/m}^3$
σ	Cavitation number,	-
	$\sigma = \frac{P_A + P_H - P_V}{1/2 \rho v^2}$	
α	Nozzle angle	degrees

Dimensions

τ Thrust load coefficient, -

$$\tau = \frac{T_D + T_p}{1/2 \rho A_p v^{0.7}{}^2}$$

ABSTRACT

Model Propeller 4716-nozzle system was characterized in open water, ahead and backing. Model propeller 4716 was also characterized, ahead and backing, without the nozzle. The propeller-nozzle system and propeller performance data are presented in this report. The results indicate that under heavily loaded conditions, especially in backing, the propeller-nozzle system is more efficient than the propeller alone at the same loading.

ADMINISTRATIVE INFORMATION

This work was sponsored by the Naval Ship Engineering Center, Norfolk Division, Code 6661, under Program Element 60000N and Work Unit 1-1532-179.

INTRODUCTION

The Naval Ship Engineering Center Norfolk (NAVSEC NORDIV) requested that the David W. Taylor Naval Research and Development Center (DTNSRDC) determine the open water characteristics of a propeller-nozzle system designed by NAVSEC NORDIV. A model of this design was manufactured by DTNSRDC. A drawing of the model propeller is shown in Figure 1 and a drawing of the nozzle is given in Figure 2. The cavitation performance of this system was determined at DTNSRDC.¹

PROCEDURE

Open water characteristics of the propeller-nozzle system were obtained in the Center's deep water basin using the propeller boat. The experiments were conducted over a range of speed coefficients from zero velocity to zero propeller thrust, torque and RPM were measured. In addition, the axial force on the nozzle was measured. The force in the direction of positive propeller thrust is designated to be positive nozzle thrust. Upon completion of the ahead characterizations, the propeller-nozzle system was reversed and the characterizations were repeated in the backing mode. Propeller Reynolds numbers for the open water experiments

¹Peck, James G. "The Effect of Propeller Pitch Distribution and Nozzle Angle on Propeller-Nozzle System Performance," DTNSRDC/SPD-0826-02 (Aug 1978).

ranged from 3.6×10^5 to 7.3×10^5 .

PRESENTATION OF DATA AND DISCUSSION

The propeller and nozzle data were reduced to non-dimensional coefficients of K_T and K_Q . When the propeller was operated in the nozzle an additional coefficient K_{TD} , the coefficient of nozzle force, was calculated. K_T is the coefficient of total system thrust (propeller plus nozzle). Efficiency (η), loading coefficients (K_T/J^2 and τ), and powering coefficients (K_Q/J^3 and Q_c) were calculated from faired values of K_T and K_Q . Faired values of the force coefficients are given in Tables 1 to 4.

Curves of the system efficiency (see Figure 3) indicate that, in ahead operation under heavily loaded conditions, the propeller-nozzle system is somewhat more efficient than the propeller alone. Moreover, in backing operation (see Figure 4) under heavily loaded conditions the propeller-nozzle system is substantially more efficient than the propeller alone.

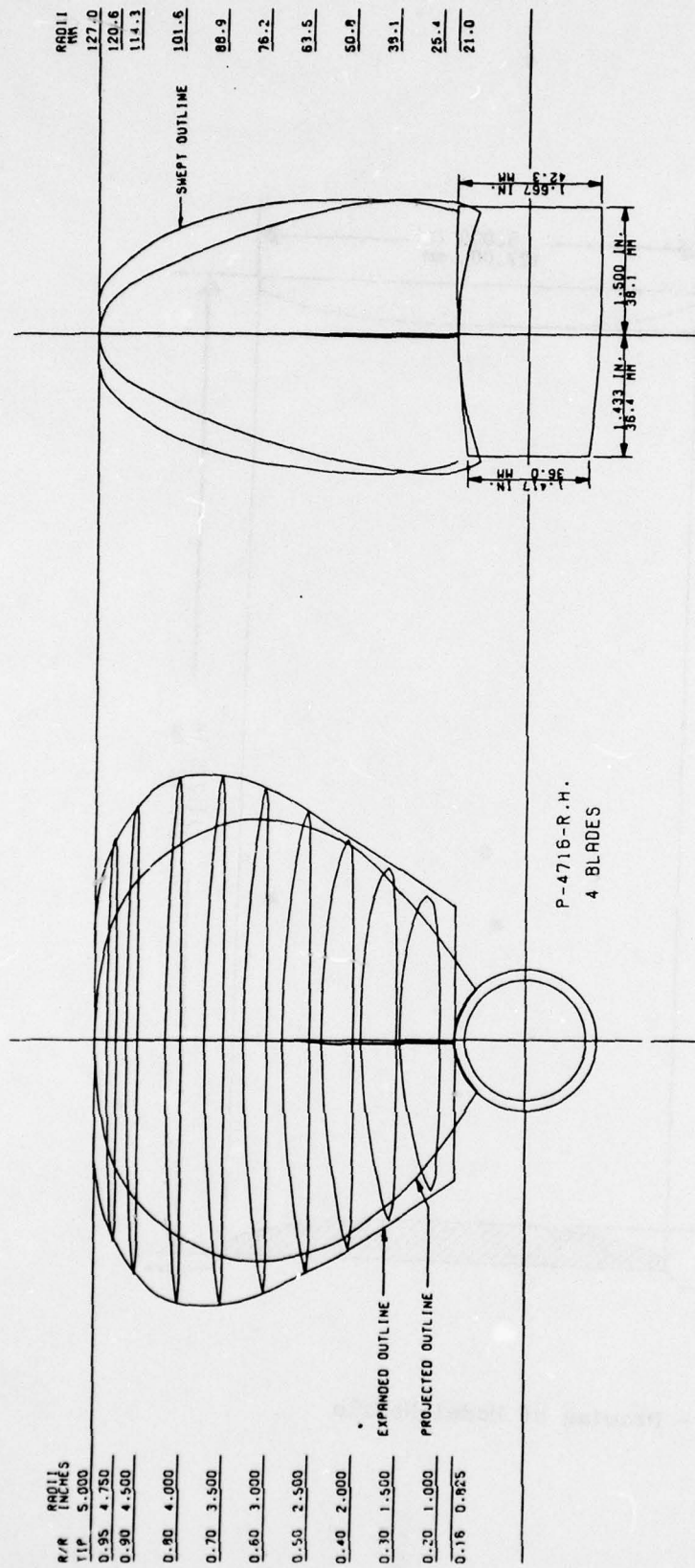


Figure 1 - Drawing of Model Propeller 4716

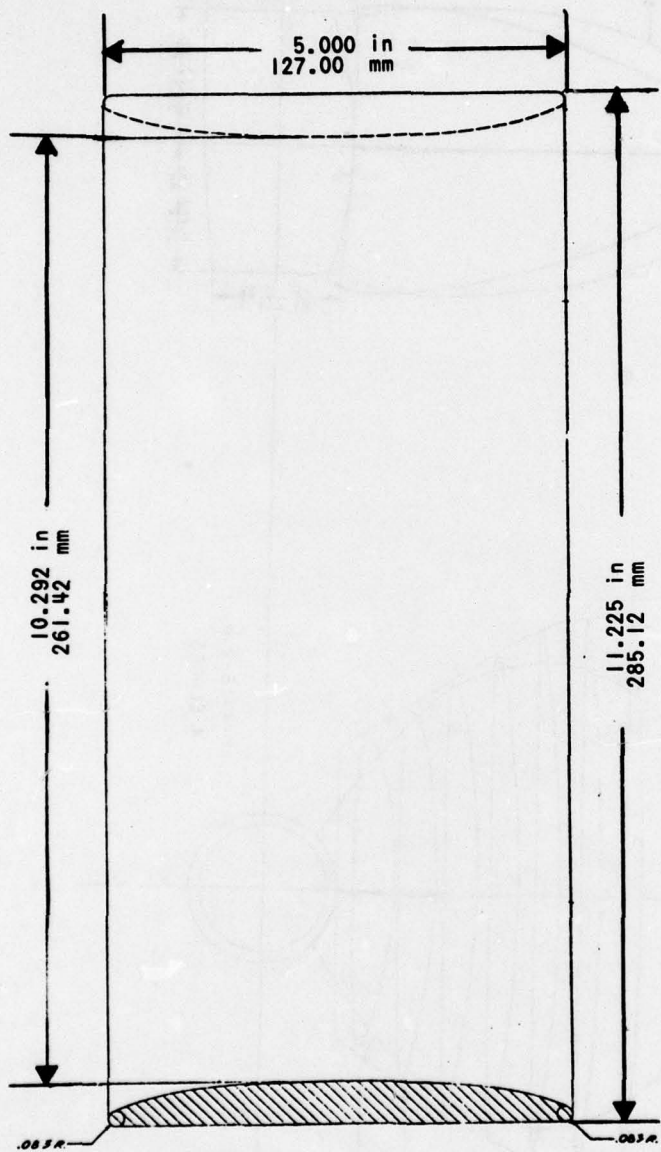


Figure 2 - Drawing of Model Nozzle

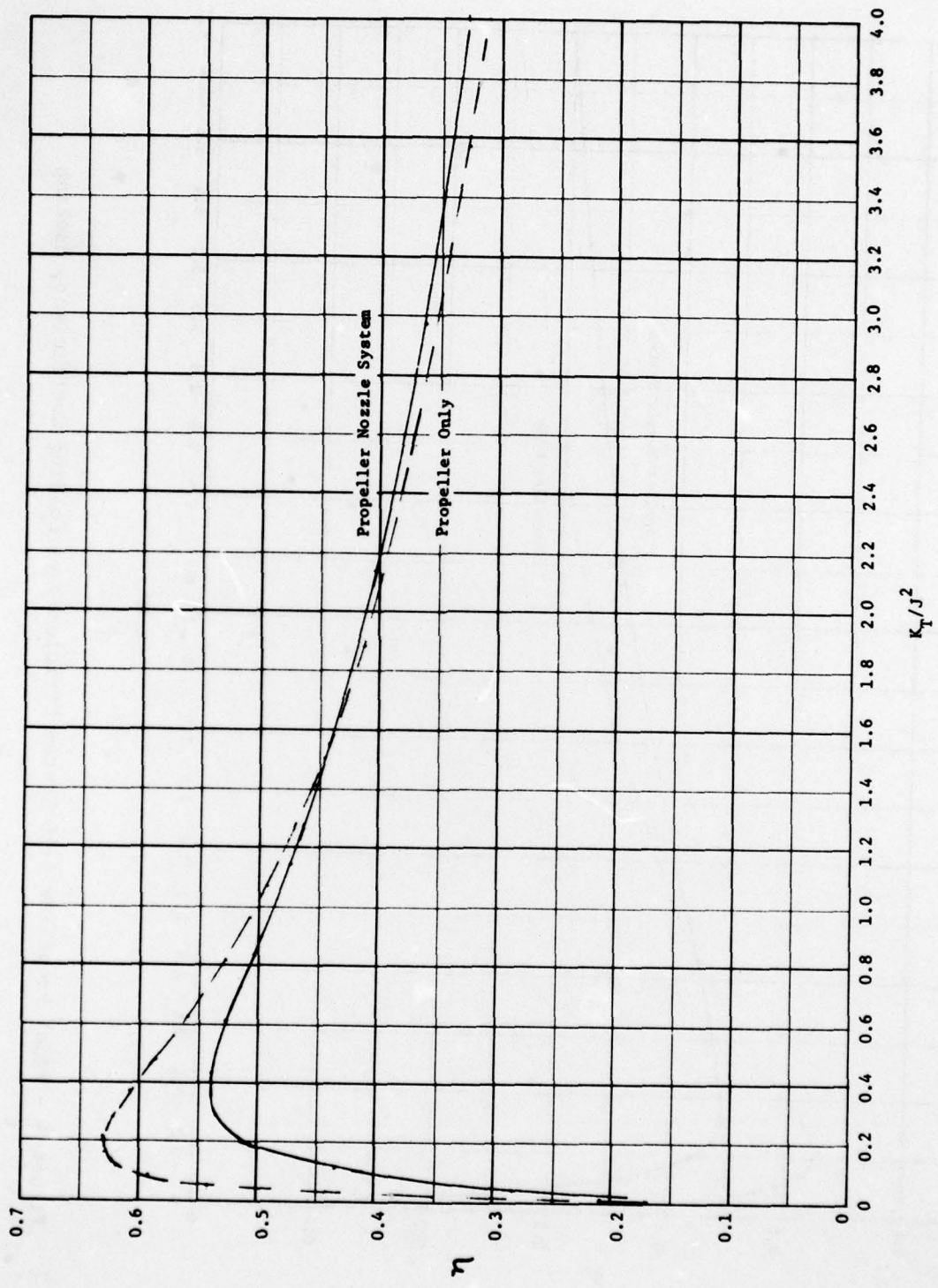


Figure 3 - Model Propeller 4716 System Efficiency vs Loading Coefficient, Ahead

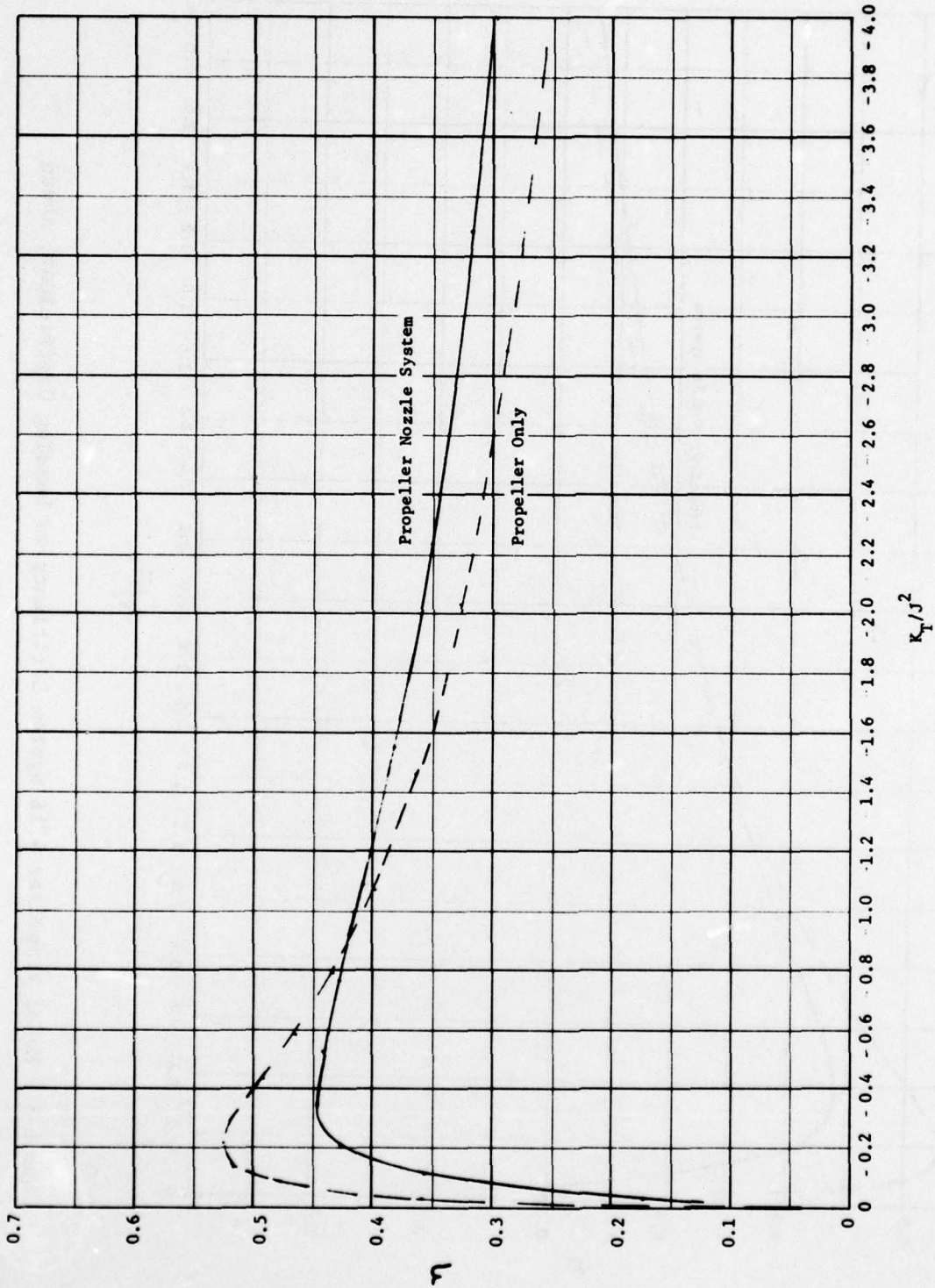


Figure 4 - Model Propeller 4716 System Efficiency vs Loading Coefficient, Backing

Table 1 - Open Water Performance of Propeller 4716 in Nozzle, Ahead

J	KTD	KT	10KQ	EFFIC	KT/J2	KQ/J3	QC	TAUC
.0500	.1516	.4789	.6331	.0602	*****	*****	.0375	.2833
.1000	.1379	.4582	.6201	.1176	*****	*****	.0367	.2706
.1500	.1235	.4398	.6103	.1720	*****	*****	.0360	.2591
.2000	.1099	.4222	.6013	.2235	*****	7.5166	.0353	.2478
.2500	.0963	.4043	.5911	.2721	6.4688	3.7833	.0346	.2362
.3000	.0833	.3852	.5781	.3181	4.2799	2.1412	.0336	.2236
.3500	.0712	.3641	.5610	.3615	2.9724	1.3085	.0324	.2102
.4000	.0601	.3406	.5390	.4023	2.1286	.8421	.0309	.1951
.4500	.0501	.3142	.5114	.4400	1.5517	.5612	.0291	.1785
.5000	.0411	.2850	.4782	.4742	1.1399	.3826	.0269	.1604
.5500	.0332	.2529	.4397	.5035	.8359	.2643	.0245	.1408
.6000	.0262	.2183	.3962	.5260	.6063	.1834	.0219	.1202
.6500	.0199	.1816	.3490	.5384	.4296	.1271	.0190	.0988
.7000	.0141	.1436	.2991	.5349	.2931	.0872	.0161	.0772
.7500	.0083	.1052	.2485	.5054	.1871	.0589	.0132	.0558
.8000	.0023	.0675	.1991	.4318	.1055	.0389	.0104	.0353
.8500	-.0045	.0319	.1534	.2810	.0441	.0250	.0079	.0164
.9000	-.0125	-.0003	.1141	-.0034	-.0003	.0157	.0058	-.0001
.9500	-.0224	-.0271	.0846	-.4347	-.0300	.0099	.0042	-.0135

Table 2 - Open Water Performance of Propeller 4716, Ahead

J	KT	10KQ	EFFIC	KT/J2	KQ/J3	QC	TAUC
.0500	.5890	1.0019	.04680593	.3484
.1000	.5637	.9591	.09350567	.3329
.1500	.5392	.9171	.14040541	.3176
.2000	.5147	.8752	.18720514	.3021
.2500	.4898	.8331	.2339	7.8367	5.3321	.0487	.2862
.3000	.4641	.7907	.2803	5.1568	2.9285	.0460	.2696
.3500	.4375	.7478	.3259	3.5715	1.7442	.0432	.2525
.4000	.4100	.7046	.3704	2.5624	1.1009	.0404	.2349
.4500	.3816	.6611	.4134	1.8846	.7255	.0376	.2168
.5000	.3526	.6177	.4543	1.4105	.4942	.0348	.1984
.5500	.3232	.5745	.4925	1.0686	.3453	.0320	.1800
.6000	.2937	.5319	.5274	.8160	.2462	.0293	.1618
.6500	.2645	.4899	.5584	.6259	.1784	.0267	.1439
.7000	.2357	.4489	.5848	.4810	.1309	.0242	.1266
.7500	.2076	.4090	.6060	.3691	.0970	.0217	.1101
.8000	.1806	.3702	.6211	.2821	.0723	.0154	.0944
.8500	.1546	.3323	.6292	.2140	.0541	.0171	.0796
.9000	.1297	.2952	.6292	.1601	.0405	.0150	.0657
.9500	.1058	.2585	.6186	.1172	.0301	.0129	.0527
1.0000	.0825	.2215	.5930	.0825	.0221	.0109	.0405
1.0500	.0595	.1833	.5425	.0540	.0158	.0088	.0287
1.1000	.0361	.1430	.4417	.0298	.0107	.0068	.0171
1.1500	.0113	.0991	.2089	.0086	.0065	.0046	.0053
1.2000	-.0159	.0500	-.6085	-.0111	.0029	.0023	-.0073

Table 3 - Open Water Performance of Propeller 4716 in Nozzle, Backing

J	KTD	KT	10KQ	EFFIC	KT/J2	KQ/J3	QC	TAUC
.0500	-.1425	-.3874	-.4848	.0636	*****	*****	-.0287	-.2291
.1000	-.1342	-.3691	-.4659	.1261	*****	*****	-.0276	-.2180
.1500	-.1221	-.3517	-.4571	.1837	*****	*****	-.0270	-.2072
.2000	-.1077	-.3343	-.4535	.2346	-.8.3568	- 5.6683	-.0267	-.1962
.2500	-.0923	-.3158	-.4505	.2789	- 5.0528	- 2.8832	-.0264	-.1845
.3000	-.0771	-.2956	-.4448	.3174	- 3.2849	- 1.6474	-.0259	-.1718
.3500	-.0627	-.2733	-.4337	.3510	- 2.2309	- 1.0116	-.0251	-.1577
.4000	-.0497	-.2484	-.4155	.3806	- 1.5527	-.6492	-.0238	-.1423
.4500	-.0384	-.2209	-.3892	.4066	- 1.0911	-.4271	-.0221	-.1255
.5000	-.0290	-.1909	-.3548	.4281	-.7635	-.2838	-.0200	-.1074
.5500	-.0211	-.1585	-.3131	.4432	-.5240	-.1862	-.0175	-.0883
.6000	-.0144	-.1242	-.2656	.4466	-.3451	-.1230	-.0147	-.0684
.6500	-.0083	-.0887	-.2150	.4269	-.2099	-.0783	-.0117	-.0483
.7000	-.0017	-.0527	-.1644	.3573	-.1076	-.0479	-.0088	-.0283
.7500	+.0065	+.0173	-.1182	.1749	+.0308	+.0280	+.0063	+.0092
.8000	+.0178	+.0164	-.0813	-.2560	+.0255	-.0159	-.0043	+.0085
.8500	+.0337	+.0469	-.0597	*****	+.0649	-.0097	-.0031	+.0241

Table 4 - Open Water Performance of Propeller 4716, Backing

J	KT	10KQ	EFFIC	KT/J2	KQ/J3	QC	TAUC
.0500	-.5043	-.9600	.0418	*****	*****	-.0569	-.2983
.1000	-.4840	-.9198	.0837	*****	*****	-.0544	-.2858
.1500	-.4606	-.8755	.1256	*****	*****	-.0516	-.2713
.2000	-.4350	-.8287	.1671	*****	*****	-.0487	-.2553
.2500	-.4082	-.7805	.2081	-.6.5313	-4.9949	-.0457	-.2385
.3000	-.3806	-.7315	.2484	-4.2242	-2.7094	-.0426	-.2211
.3500	-.3527	-.6823	.2879	-2.8789	-1.5915	-.0394	-.2035
.4000	-.3245	-.6331	.3263	-2.0282	-.9892	-.0363	-.1859
.4500	-.2963	-.5837	.3635	-1.4630	-.6405	-.0332	-.1683
.5000	-.2679	-.5340	.3992	-1.0715	-.4272	-.0301	-.1507
.5500	-.2393	-.4839	.4329	-.7910	-.2908	-.0270	-.1333
.6000	-.2103	-.4330	.4639	-.5843	-.2005	-.0239	-.1159
.6500	-.1810	-.3814	.4910	-.4284	-.1389	-.0208	-.0985
.7000	-.1512	-.3289	.5122	-.3086	-.0959	-.0177	-.0813
.7500	-.1209	-.2757	.5236	-.2150	-.0654	-.0146	-.0641
.8000	-.0904	-.2224	.5174	-.1412	-.0434	-.0116	-.0472
.8500	-.0598	-.1697	.4767	-.0827	-.0276	-.0087	-.0308
.9000	-.0296	-.1186	.3577	-.0366	-.0163	-.0060	-.0150
.9500	-.0006	-.0709	.0123	-.0006	-.0083	-.0035	-.0003
1.0000	+.0264	-.0287	*****	+.0264	-.0029	-.0014	+.0130

DTNSRDC ISSUES THREE TYPES OF REPORTS

1. DTNSRDC REPORTS, A FORMAL SERIES, CONTAIN INFORMATION OF PERMANENT TECHNICAL VALUE. THEY CARRY A CONSECUTIVE NUMERICAL IDENTIFICATION REGARDLESS OF THEIR CLASSIFICATION OR THE ORIGINATING DEPARTMENT.

2. DEPARTMENTAL REPORTS, A SEMIFORMAL SERIES, CONTAIN INFORMATION OF A PRELIMINARY, TEMPORARY, OR PROPRIETARY NATURE OR OF LIMITED INTEREST OR SIGNIFICANCE. THEY CARRY A DEPARTMENTAL ALPHANUMERICAL IDENTIFICATION.

3. TECHNICAL MEMORANDA, AN INFORMAL SERIES, CONTAIN TECHNICAL DOCUMENTATION OF LIMITED USE AND INTEREST. THEY ARE PRIMARILY WORKING PAPERS INTENDED FOR INTERNAL USE. THEY CARRY AN IDENTIFYING NUMBER WHICH INDICATES THEIR TYPE AND THE NUMERICAL CODE OF THE ORIGINATING DEPARTMENT. ANY DISTRIBUTION OUTSIDE DTNSRDC MUST BE APPROVED BY THE HEAD OF THE ORIGINATING DEPARTMENT ON A CASE-BY-CASE BASIS.