

AD-A070 642

ARMY ELECTRONICS RESEARCH AND DEVELOPMENT COMMAND WS--ETC F/G 4/2
14818C LANCE MISSILE NUMBER 4355 ROUND NUMBER 329 APT.(U)
APR 79

UNCLASSIFIED

ERADCOM/ASL-DR-1006

NL

1 OF 1

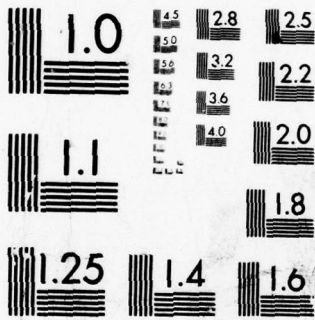
AD
A070642



END
DATE
FILMED

8--79

DDC



MICROCOPY RESOLUTION TEST CHART
NATIONAL BUREAU OF STANDARDS-1963-A

~~SECRET~~

FORN DISSEM: NO PUBLIC RELEASE; DISTRIBUTION RESTRICTED

FORM 100
1-64



DA070642

METEOROLOGICAL DATA REPORT

1815Z Laramie
Station No. 325
Report No. 287 871

DDC
RECEIVED
IN 235
RECEIVED
C

ATMOSPHERIC SCIENCE LABORATORY
WHITE SANDS MISSILE RANGE, NEW MEXICO

ECOM

UNITED STATES ARMY ELECTRONICS COMMAND

79 06 26 060

REPORT DOCUMENTATION PAGE		READ INSTRUCTIONS BEFORE COMPLETING FORM	
1. REPORT NUMBER 14818C	2. GOVT ACQUISITION NO.	3. RECIPIENT'S REPORT NUMBER	4. DATE OF REPORT PERIOD COVERED
6 14818C Lance Missile No. 4355 Number 4355 Round No. 329 APT		9 Meteorological data rept.	
7. AUTHOR(s) WSMR Meteorological Team	Number	6. PERFORMING ORG. REPORT NUMBER	
9. PERFORMING ORGANIZATION NAME AND ADDRESS 12 33p.		8. CONTRACT OR GRANT NUMBER(s)	1T6657-2D126-02
11. CONTROLLING OFFICE NAME AND ADDRESS US Army Electronics Research & Development Comd Atmospheric Sciences Laboratory White Sands Missile Range, New Mexico		10. PROGRAM ELEMENT, PROJECT, TASK AREA & WORK UNIT NUMBERS	
14. MONITORING AGENCY NAME & ADDRESS (if different from Controlling Office) US Army Electronics Research & Development Comd		12. REPORT DATE 11 Apr 1979	13. NUMBER OF PAGES
		15. SECURITY CLASS. (of this report)	15a. DECLASSIFICATION/DOWNGRADING SCHEDULE
16. DISTRIBUTION STATEMENT (of this Report) Approved for public release; distribution unlimited.			
17. DISTRIBUTION STATEMENT (of the abstract entered in Block 20, if different from Report) 14 ERADCOM/ASL-DR-1006			
18. SUPPLEMENTARY NOTES			
19. KEY WORDS (Continue on reverse side if necessary and identify by block number) 1. Ballistics 2. Meteorology 3. Wind			
20. ABSTRACT (Continue on reverse side if necessary and identify by block number) Meteorological data gathered for the launching of 14818C Lance, Missile Number 4355, Round Number. 329 APT, are presented in tabular form. 410 663 Jm			

REPORT DOCUMENTATION PAGE	
1. AGENCY USE ONLY (Leave blank)	
2. AUTHOR	
3. TITLE	
4. PERFORMING ORG. REPORT NUMBER	
5. CONTRACT OR GRANT NUMBER	
6. AUTHORING OR PERFORMING ORGANIZATION NAME(S) AND ADDRESS(ES)	
7. AUTHORING OR PERFORMING ORGANIZATION REPORT NUMBER	
8. PERFORMING ORGANIZATION REPORT NUMBER	
9. PERFORMING ORGANIZATION REPORT NUMBER	
10. PERFORMING ORGANIZATION REPORT NUMBER	
11. PERFORMING ORGANIZATION REPORT NUMBER	
12. PERFORMING ORGANIZATION REPORT NUMBER	
13. PERFORMING ORGANIZATION REPORT NUMBER	
14. PERFORMING ORGANIZATION REPORT NUMBER	
15. PERFORMING ORGANIZATION REPORT NUMBER	
16. PERFORMING ORGANIZATION REPORT NUMBER	
17. PERFORMING ORGANIZATION REPORT NUMBER	
18. PERFORMING ORGANIZATION REPORT NUMBER	
19. PERFORMING ORGANIZATION REPORT NUMBER	
20. PERFORMING ORGANIZATION REPORT NUMBER	
21. PERFORMING ORGANIZATION REPORT NUMBER	
22. PERFORMING ORGANIZATION REPORT NUMBER	
23. PERFORMING ORGANIZATION REPORT NUMBER	
24. PERFORMING ORGANIZATION REPORT NUMBER	
25. PERFORMING ORGANIZATION REPORT NUMBER	
26. PERFORMING ORGANIZATION REPORT NUMBER	
27. PERFORMING ORGANIZATION REPORT NUMBER	
28. PERFORMING ORGANIZATION REPORT NUMBER	
29. PERFORMING ORGANIZATION REPORT NUMBER	
30. PERFORMING ORGANIZATION REPORT NUMBER	
31. PERFORMING ORGANIZATION REPORT NUMBER	
32. PERFORMING ORGANIZATION REPORT NUMBER	
33. PERFORMING ORGANIZATION REPORT NUMBER	
34. PERFORMING ORGANIZATION REPORT NUMBER	
35. PERFORMING ORGANIZATION REPORT NUMBER	
36. PERFORMING ORGANIZATION REPORT NUMBER	
37. PERFORMING ORGANIZATION REPORT NUMBER	
38. PERFORMING ORGANIZATION REPORT NUMBER	
39. PERFORMING ORGANIZATION REPORT NUMBER	
40. PERFORMING ORGANIZATION REPORT NUMBER	
41. PERFORMING ORGANIZATION REPORT NUMBER	
42. PERFORMING ORGANIZATION REPORT NUMBER	
43. PERFORMING ORGANIZATION REPORT NUMBER	
44. PERFORMING ORGANIZATION REPORT NUMBER	
45. PERFORMING ORGANIZATION REPORT NUMBER	
46. PERFORMING ORGANIZATION REPORT NUMBER	
47. PERFORMING ORGANIZATION REPORT NUMBER	
48. PERFORMING ORGANIZATION REPORT NUMBER	
49. PERFORMING ORGANIZATION REPORT NUMBER	
50. PERFORMING ORGANIZATION REPORT NUMBER	

Accession For	
NTIS GRA&I	<input checked="" type="checkbox"/>
DDC TAB	<input type="checkbox"/>
Unannounced	<input type="checkbox"/>
Justification	
By _____	
Distributor/ _____	
Availability Code _____	
Dist	Avail and/or special
A	

CONTENTS

	PAGE
INTRODUCTION -----	1
DISCUSSION -----	1
TABLES	
I. Surface Observations Taken at LC-39 -----	2
II. Pilot-Balloon-Measured Wind Data, Release No. 1 at 1320 MST -----	3-4
III. Pilot-Balloon-Measured Wind Data, Release No. 2 at 1335 MST -----	5-7
IV. WSD Significant Level Data (Release Time: 1330 MST) -----	8
V. WSD Upper Air Data (Release Time: 1330 MST) -----	9-13
VI. WSD MRN Significant Level Data (Release Time: 1330 MST) -----	14
VII. WSD Mandatory Levels (Release Time: 1330 MST) -----	15
VIII. WSD MRN Mandatory Levels (Release Time: 1330 MST) -----	16
IX. SMR Signivicant Level Data (Release Time: 1340 MST) -----	17
X. SMR Upper Air Data (Release Time: 1340 MST) -----	18-21
XI. SMR MRN Significant Level Data (Release Time: 1340 MST) -----	22
XII. SMR Mandatory Levels (Release Time: 1340 MST) -----	23
XIII. SMR MRN Mandatory Levels (Release Time: 1340 MST) -----	24
XIV. HMN Significant Level Data (Release Time: 1300 MST) -----	25
XV. HMN Upper Air Data (Release Time: 1300 MST) -----	26-28
XVI. HMN Mandatory Levels (Release Time: 1300 MST) -----	29
XVII. HMN MRN Mandatory Levels (Release Time: 1300 MST) -----	30

INTRODUCTION

14818C Lance, Missile Number 4355, Round Number 329 APT, was launched from LC-39, White Sands Missile Range (WSMR), New Mexico, at 1330 MST, 25 April 1979. The scheduled launch time was 1330 MST.

DISCUSSION

Meteorological data were recorded and reduced by the White Sands Meteorological Team, Atmospheric Sciences Laboratory (ASL), White Sands Missile Range, New Mexico. The data were obtained by the following methods:

1. Observations

a. Surface. Standard surface observations to include pressure, temperature ($^{\circ}\text{C}$), relative humidity, dew point ($^{\circ}\text{C}$), density (gm/m^3), wind direction and speed, and cloud cover were made at the LC-39 Met Site at T-0 minutes.

b. Upper Air

(1) Low level wind data were obtained from RAPTS T-9 pibal observations at:

SITE AND ALTITUDE

LC-36	7,000 feet	1320 MST
LC-36	12,000 feet	1335 MST

(2) Air structure data (rawinsonde) were collected at the following Met Sites. Data were collected from surface to balloon burst in 500-foot increments.

SITE AND TIME

WSD	1330 MST
HMN	1300 MST
SMR	1340 MST

The data are presented in the following tabulations:

ELEVATION	4064	FT/MSL
PRESSURE	872.7	MBS
TEMPERATURE	28.9	°C
RELATIVE HUMIDITY	14	%
DEW POINT	-1.5	°C
DENSITY	1002	GM/M ³
WIND SPEED	06	MPH
WIND DIRECTION	330	DEGREES
CLOUD COVER	1	Cu
CLOUD COVER	4	Cs

TABLE I. SURFACE OBSERVATIONS TAKEN AT 1330 LOCAL TIME,
25 April 1979 AT LC-39, 14818C LANCE, MISSILE
NO. 4355, ROUND NO. 329 APT.

PIBAL DATA FORM

OD Number and Name 14818C Lance

Missile Number 4355 Round 329 APT

HEIGHT (Feet)	DIRECTION (Degrees)	SPEED (MPH)
SUR	330	6.0
100	310	5.0
200	285	3.0
300	260	3.0
400	240	2.0
500	245	3.5
600	250	5.0
700	260	6.5
800	260	7.5
900	265	8.0
1000	260	8.5
1100	260	9.0
1200	260	9.5
1300	265	11.0
1400	270	12.0
1500	275	13.0
1600	280	14.0
1700	285	14.0
1800	295	13.5
1900	300	13.0
2000	305	12.5

HEIGHT (Feet)	DIRECTION (Degrees)	SPEED (MPH)
2100	305	12.5
2200	300	12.5
2300	300	12.5
2400	295	12.5
2500	295	13.0
2600	295	13.5
2700	300	14.0
2800	300	14.0
2900	295	14.5
3000	295	14.5
3100	290	14.5
3200	285	14.5
3300	285	14.5
3400	285	14.5
3500	285	14.5
3600	285	14.5
3700	280	14.0
3800	275	13.0
3900	275	12.5
4000	270	11.5
4100	270	11.5

TABLE II . PILOT-BALLOON-MEASURED WIND DATA, RELEASE NO. 1
 RELEASED FROM LC-36 , AT 1320 LOCAL TIME, 25 Apr 11 1979 .

PIBAL RELEASE POINT WSTM COORDINATES
 X = 502,452.98 Y = 190,654.50 Z = 4043.49

APPROXIMATELY: 2 1/2 MILES West OF LAUNCHER

OD Number and Name 14818C Lance

Missile Number 4355

Round 329 APT

HEIGHT (Feet)	DIRECTION (Degrees)	SPEED (MPH)
4200	270	11.5
4300	270	11.5
4400	270	11.0
4500	270	11.5
4600	265	11.5
4700	265	11.5
4800	265	11.5
4900	265	12.0
5000	265	12.5
5100	265	13.0
5200	265	13.5
5300	260	14.5
5400	260	15.0
5500	260	16.0
5600	260	16.5
5700	260	18.0
5800	260	19.0
5900	260	20.0
6000	260	21.0
6100	260	21.0
6200	260	21.0
6300	260	21.0
6400	260	21.0
6500	265	21.5

HEIGHT (Feet)	DIRECTION (Degrees)	SPEED (MPH)
6600	270	22.0
6700	275	25.0
6800	280	23.0
6900	280	24.0
7000	285	25.0
7100		
7200		
7300		
7400		
7500		
7600		
7700		
7800		
7900		
8000		
8100		
8200		
8300		
8400		
8500		
8600		
8700		
8800		
8900		

TABLE II (Cont)

NOTE: WIND DIRECTION DATA ARE REFERENCED

TRUE NORTH

4

(FIRING AZIMUTH OF TRUE NORTH)

PIBAL DATA FORM

OD Number and Name 14818C Lance

Missile Number 4355 Round 329 APT

HEIGHT (Feet)	DIRECTION (Degrees)	SPEED (MPH)
SUR	330	6.0
100	318	6.0
200	305	6.0
300	293	6.0
400	280	6.0
500	272	8.0
600	263	9.5
700	254	11.0
800	245	12.5
900	246	13.0
1000	246	13.0
1100	247	13.0
1200	247	13.0
1300	252	14.0
1400	256	15.0
1500	260	16.0
1600	264	17.0
1700	266	18.0
1800	268	18.5
1900	270	19.5
2000	271	20.0

HEIGHT (Feet)	DIRECTION (Degrees)	SPEED (MPH)
2100	270	19.5
2200	269	18.5
2300	268	18.0
2400	267	17.0
2500	266	16.5
2600	265	16.0
2700	264	15.5
2800	263	15.0
2900	262	15.0
3000	260	14.5
3100	258	14.0
3200	256	13.5
3300	256	14.0
3400	256	14.5
3500	256	15.0
3600	255	15.0
3700	254	14.0
3800	253	13.0
3900	252	12.0
4000	250	10.5
4100	254	10.5

TABLE III. PILOT-BALLOON-MEASURED WIND DATA, RELEASE NO. 2
RELEASED FROM LC-36, AT 1335 LOCAL TIME, 25 April 1979.

PIBAL RELEASE POINT WSTM COORDINATES

X = 502,452.98 Y = 190,654.50 Z = 4043.49

APPROXIMATELY: 2 1/2 MILES West OF LAUNCHER

OD Number and Name 14818C Lance

Missile Number 4355

Round 329 APT

HEIGHT (Feet)	DIRECTION (Degrees)	SPEED (MPH)
4200	258	10.5
4300	262	10.5
4400	266	10.5
4500	272	11.0
4600	277	11.5
4700	282	12.0
4800	287	12.5
4900	291	10.5
5000	295	8.5
5100	299	6.5
5200	302	4.5
5300	307	5.0
5400	312	5.0
5500	317	5.0
5600	322	5.0
5700	323	5.5
5800	323	6.0
5900	323	6.5
6000	323	7.0
6100	315	8.0
6200	306	9.0
6300	297	10.0
6400	288	11.0
6500	292	10.0

HEIGHT (Feet)	DIRECTION (Degrees)	SPEED (MPH)
6600	296	9.0
6700	300	8.0
6800	303	7.0
6900	307	8.0
7000	310	8.5
7100	313	9.5
7200	316	10.0
7300	307	22.0
7400	297	33.5
7500	288	45.0
7600	278	56.5
7700	284	45.0
7800	289	33.0
7900	294	21.0
8000	299	9.0
8100	299	10.0
8200	299	11.0
8300	299	12.0
8400	299	12.5
8500	296	15.5
8600	292	18.0
8700	288	20.5
8800	284	23.0
8900	281	27.0

TABLE III (Cont)

NOTE: WIND DIRECTION DATA ARE REFERENCED

TRUE NORTH

(FIRING AZIMUTH OF TRUE NORTH)

OD Number and Name 14818C Lance Missile Number 4355 Round 329 APT

HEIGHT (Feet)	DIRECTION (Degrees)	SPEED (MPH)
9000	278	31.0
9100	275	35.0
9200	271	38.5
9300	271	38.5
9400	271	38.5
9500	271	38.5
9600	271	38.0
9700	272	37.5
9800	272	37.0
9900	273	36.5
10000	273	36.0
10100	273	36.0
10200	272	36.0
10300	272	36.0
10400	271	35.5
10500	271	34.5
10600	271	33.0
10700	271	31.5
10800	270	30.0
10900	271	30.0
11000	272	30.0
11100	273	30.0
11200	273	30.0
11300	274	30.0

HEIGHT (Feet)	DIRECTION (Degrees)	SPEED (MPH)
11400	275	30.0
11500	276	30.0
11600	276	29.5
11700	277	29.0
11800	277	28.0
11900	277	27.5
12000	277	26.5
12100		
12200		
12300		
12400		
12500		
12600		
12700		
12800		
12900		
13000		
13100		
13200		
13300		
13400		
13500		
13600		
13700		

TABLE III (Cont)

NOTE: WIND DIRECTION DATA ARE REFERENCED TRUE NORTH
 (Facing Azimuth or True North)

STATION ALTITUDE 3989.00 FEET MSL
 25 APR. 79 1330 HRS MST
 ASCENSION NO. 188

SIGNIFICANT LEVEL DATA
 115002018b
 WHITE SANDS

GEODETIC COORDINATES
 32.40043 LAT DEG
 106.37033 LON DEG

PRESSURE MILLIBARS	GEOMETRIC ALTITUDE MSL FEET	TEMPERATURE AIR DEGREES CENTIGRADE	REL. HUM. PERCENT
875.9	3989.0	28.8	14.0
850.0	4856.4	-1.5	18.0
808.6	6279.2	20.5	19.0
753.6	8253.8	14.7	23.0
700.0	10281.2	9.0	31.0
685.3	10357.0	7.4	32.0
674.0	11306.8	7.4	32.0
648.8	12322.4	4.6	32.0
636.9	12228.2	4.6	29.0
599.2	14449.6	.4	31.0
559.6	16237.1	-4.3	36.0
551.8	16600.7	-4.5	33.0
500.0	19125.0	-10.5	37.0
448.6	21844.4	-15.7	37.0
414.8	25773.2	-19.8	37.0
400.0	24658.4	-21.0	32.0
300.0	31445.1	-36.0	28.0
287.4	32421.4	-38.5	
250.0	35520.6	-46.9	
226.2	37681.8	-51.6	
200.0	40281.7	-57.0	
169.0	43733.4	-64.7	
150.0	46114.4	-68.1	
135.4	48137.9	-68.0	
128.4	49169.6	-67.1	
118.4	50904.4	-66.9	
113.9	51581.4	-64.3	
105.6	53098.2	-67.1	
100.0	54196.1	-62.2	
92.7	55750.0	-57.2	
79.8	58844.1	-63.3	
70.0	61496.8	-64.3	
66.4	62580.2	-57.7	
59.8	64744.9	-61.1	
50.0	68446.8	-57.7	
30.0	79279.2	-50.6	
20.0	88140.9	-44.7	
17.2	91498.4	-42.5	

STATION ALTITUDE 3989.00 FEET MSL
 25 APR. 79 1330 HRS MST
 ASCENSION NO. 188

UPPER AIR DATA
 1150020188
 WHITE SANDS

GEODETIC COORDINATES
 32.40043 LAT DEG
 106.37033 LON DEG

GEOMETRIC ALTITUDE MSL FEET	PRESSURE MILLIBARS	AIR TEMPERATURE DEGREES	DEWPOINT DEGREES	REL HUM. PERCENT	DENSITY GM/CUBIC METER	SPEED SOUND KNOTS	WIND DIRECTION DEGREES(TI)	WIND SPEED KNOTS	INDEX OF REFRACTION
3989.0	875.9	28.8	-1.3	14.0	1008.1	677.8	280.0	8.0	1.000248
4000.0	875.6	28.7	-1.3	14.1	1007.9	677.7	279.8	8.0	1.000248
4500.0	860.5	26.1	-1.3	16.4	999.2	674.8	272.2	8.8	1.000246
5000.0	845.7	23.9	-1.7	18.1	989.4	672.3	265.9	9.8	1.000244
5500.0	831.0	22.6	-2.6	18.5	976.7	670.7	260.9	10.9	1.000240
6000.0	816.6	21.2	-3.4	18.8	964.1	669.2	267.0	11.8	1.000236
6500.0	802.3	19.9	-4.1	19.4	951.6	667.0	271.3	12.6	1.000232
7000.0	788.1	18.4	-4.6	20.5	939.8	665.9	273.5	13.0	1.000229
7500.0	774.1	16.9	-5.2	21.5	927.9	664.2	275.4	13.5	1.000225
8000.0	760.5	15.4	-5.9	22.5	916.2	662.5	276.7	14.1	1.000222
8500.0	746.9	14.0	-6.2	24.0	904.3	660.8	279.4	13.5	1.000219
9000.0	733.4	12.5	-6.4	25.9	892.4	659.2	282.6	12.7	1.000216
9500.0	720.2	11.2	-6.6	27.9	880.6	657.6	284.7	12.4	1.000214
10000.0	707.2	9.8	-7.0	29.9	869.0	655.9	284.9	14.6	1.000211
10500.0	694.4	8.4	-7.6	31.4	857.6	654.3	283.9	17.7	1.000208
11000.0	681.7	7.4	-8.2	32.0	844.9	653.1	281.1	20.9	1.000204
11500.0	669.2	6.9	-8.7	32.0	831.0	652.5	277.6	23.7	1.000200
12000.0	656.9	5.5	-9.8	32.0	819.8	650.9	272.0	25.8	1.000197
12500.0	644.8	4.6	-11.0	31.0	807.4	649.8	268.7	28.0	1.000193
13000.0	632.8	4.2	-12.2	29.2	793.8	649.2	267.4	28.5	1.000189
13500.0	621.0	2.9	-13.0	29.6	782.7	647.7	260.1	29.1	1.000186
14000.0	609.4	1.6	-13.9	30.4	771.8	646.1	265.8	28.7	1.000182
14500.0	598.0	.3	-14.8	31.1	761.0	644.6	266.6	27.3	1.000179
15000.0	585.7	-1.0	-15.4	32.5	750.3	643.0	267.4	26.1	1.000177
15500.0	575.6	-2.4	-16.1	33.9	739.7	641.4	268.0	25.5	1.000174
16000.0	564.7	-3.7	-16.8	35.3	729.2	639.9	272.5	25.2	1.000171
16500.0	553.9	-4.4	-18.0	33.5	717.4	638.9	278.2	24.6	1.000168
17000.0	543.3	-5.4	-18.9	33.6	706.3	637.7	285.0	23.0	1.000165
17500.0	532.8	-6.6	-19.7	34.4	695.6	636.3	290.2	22.0	1.000162
18000.0	522.5	-7.8	-20.5	35.2	685.4	634.8	295.1	22.4	1.000159
18500.0	512.4	-9.0	-21.3	36.0	675.2	633.4	298.1	24.0	1.000156
19000.0	502.4	-10.2	-22.1	36.8	665.2	632.0	296.6	26.9	1.000154
19500.0	492.6	-11.2	-23.0	37.0	654.0	630.7	295.3	30.3	1.000151
20000.0	482.8	-12.2	-23.8	37.0	644.1	629.5	294.3	34.0	1.000148
20500.0	473.3	-13.1	-24.7	37.0	633.7	628.2	293.3	36.3	1.000146
21000.0	464.8	-14.1	-25.6	37.0	623.5	627.2	292.3	38.1	1.000143
21500.0	454.8	-15.0	-26.4	37.0	613.5	626.1	289.4	38.2	1.000141
22000.0	445.8	-16.0	-27.3	37.0	603.6	624.9	287.1	38.4	1.000138
22500.0	436.8	-17.1	-28.3	37.0	594.0	623.6	286.3	38.5	1.000136
23000.0	428.0	-18.2	-29.2	37.0	584.5	622.2	287.2	38.1	1.000133

STATION ALTITUDE 3989.00 FEET MSL
 25 APR. 79 1330 HRS MST
 ASCENSION NO. 148

UPPER AIR DATA
 1150020180
 WHITE SANDS

GEODETIC COORDINATES
 32.40043 LAT DEG
 106.37033 LON DEG

GEOMETRIC ALTITUDE MSL FEET	PRESSURE MILLIBARS	TEMPERATURE		REL. HUM. PERCENT	DENSITY GM/CUBIC METER	SPEED OF SOUND KNOTS	WIND DATA		INDEX OF REFRACTION
		AIR DEGREES	DEWPOINT CENTIGRADE				DIRECTION DEGREES(TN)	SPEED KNOTS	
23500.0	419.4	-19.2	-30.2	37.0	575.2	620.9	287.4	38.1	1.000131
24000.0	411.0	-20.1	-31.3	35.7	565.5	619.8	286.6	38.9	1.000129
24500.0	402.6	-20.8	-32.8	32.9	555.6	619.0	285.4	41.3	1.000126
25000.0	394.3	-21.8	-34.0	31.8	546.1	617.8	284.6	42.9	1.000124
25500.0	385.0	-22.9	-35.1	31.5	537.1	616.4	284.5	42.9	1.000121
26000.0	377.9	-24.0	-36.2	31.2	528.2	615.1	284.6	43.1	1.000119
26500.0	370.0	-25.1	-37.2	30.9	519.4	613.7	284.8	43.5	1.000117
27000.0	362.2	-26.2	-38.3	30.6	510.9	612.3	284.9	44.8	1.000115
27500.0	354.6	-27.3	-39.4	30.3	502.3	610.9	285.6	45.8	1.000113
28000.0	347.2	-28.4	-40.5	30.0	494.0	609.6	287.2	46.0	1.000111
28500.0	339.9	-29.5	-41.5	29.7	485.9	608.2	289.8	46.6	1.000109
29000.0	332.8	-30.6	-42.6	29.4	477.9	606.8	293.1	47.3	1.000107
29500.0	325.8	-31.7	-43.7	29.1	470.0	605.4	294.2	49.8	1.000105
30000.0	319.0	-32.8	-44.7	28.9	462.2	604.0	294.6	52.6	1.000104
30500.0	312.3	-33.9	-45.8	28.6	454.6	602.6	292.3	57.7	1.000102
31000.0	305.7	-35.0	-46.9	28.3	447.2	601.2	290.3	62.7	1.000100
31500.0	299.3	-36.1	-48.0	28.0	439.8	599.8	289.8	62.4	1.000098
32000.0	292.8	-37.4	-49.1	28.0	432.6	598.2	289.8	61.6	1.000097
32500.0	286.4	-38.7	-50.5	27.3**	425.5	596.5	291.4	58.9	1.000095
33000.0	280.0	-40.1	-53.2	22.8**	418.5	594.8	293.2	57.2	1.000094
33500.0	273.8	-41.4	-56.1	18.3**	411.6	593.1	295.2	60.0	1.000092
34000.0	267.7	-42.8	-59.5	13.7**	404.8	591.3	296.9	62.9	1.000090
34500.0	261.7	-44.1	-63.6	9.2**	398.1	589.6	297.5	65.6	1.000089
35000.0	255.9	-45.5	-69.5	4.7**	391.6	587.8	298.2	68.2	1.000087
35500.0	250.2	-46.8	-89.9	.2**	385.2	586.1	297.4	69.5	1.000086
36000.0	244.5	-47.9			378.2	584.6	296.6	70.6	1.000084
36500.0	238.9	-49.0			371.4	583.2	295.5	72.8	1.000083
37000.0	233.5	-50.1			364.6	581.8	294.4	75.2	1.000081
37500.0	228.1	-51.2			358.0	580.4	293.9	77.9	1.000080
38000.0	222.8	-52.3			351.4	579.0	293.9	80.9	1.000078
38500.0	217.6	-53.3			344.8	577.6	294.1	84.8	1.000077
39000.0	212.5	-54.3			338.3	576.3	294.4	89.6	1.000075
39500.0	207.5	-55.4			332.0	574.9	294.8	95.0	1.000074
40000.0	202.7	-56.4			325.8	573.5	295.2	101.1	1.000073
40500.0	197.9	-57.5			319.6	572.1	295.5	104.9	1.000071
41000.0	193.1	-58.6			313.6	570.6	295.7	106.8	1.000070
41500.0	188.5	-59.7			307.6	569.1	295.9	106.0	1.000069
42000.0	183.9	-60.8			301.6	567.7	296.1	103.7	1.000067
42500.0	179.5	-61.9			295.0	566.2	296.5	101.3	1.000066
43000.0	175.2	-63.1			290.4	564.7	297.0	98.9	1.000065

** AT LEAST ONE ASSUMED RELATIVE HUMIDITY VALUE WAS USED IN THE INTERPOLATION.

STATION ALTITUDE 3989.00 FEET MSL
 25 APR. 79 1330 HRS MST
 ASCENSION NO. 188

UPPER AIR DATA
 1150020186
 WHITE SANDS

GEODETIC COORDINATES
 32.40043 LAT DEG
 106.37033 LON DEG

GEOMETRIC ALTITUDE MSL FEET	PRESSURE MILLIBARS	TEMPERATURE AIR DEGREES	TEMPERATURE DEWPOINT DEGREES	REL. HUM. PERCENT	DENSITY GM/CUBIC METER	SPEED OF SOUND KNOTS	WIND DATA		INDEX OF REFRACTION
							DIRECTION DEGREES(TN)	SPEED KNOTS	
43500.0	170.9	-64.2			285.0	563.2	296.9	296.9	1.000063
44000.0	166.8	-65.1			279.2	562.0	296.6	296.6	1.000062
44500.0	162.6	-65.8			273.2	561.0	296.1	296.1	1.000061
45000.0	158.6	-66.5			267.4	560.0	295.3	295.3	1.000060
45500.0	154.7	-67.2			261.7	559.1	294.5	294.5	1.000059
46000.0	150.9	-67.9			256.1	558.1	293.6	293.6	1.000058
46500.0	147.1	-68.3			250.1	557.6	292.7	292.7	1.000056
47000.0	143.4	-68.5			244.1	557.3	292.2	292.2	1.000054
47500.0	139.8	-68.7			238.3	557.0	291.6	291.6	1.000053
48000.0	136.3	-68.9			232.6	556.7	291.3	291.3	1.000052
48500.0	132.9	-68.3			226.1	557.5	291.1	291.1	1.000050
49000.0	129.6	-67.4			219.5	558.6	291.0	291.0	1.000049
49500.0	126.4	-67.1			213.7	559.3	291.2	291.2	1.000048
50000.0	123.3	-67.0			206.3	559.4	291.4	291.4	1.000046
50500.0	120.2	-66.9			203.1	559.4	291.9	291.9	1.000045
51000.0	117.3	-66.2			197.4	560.4	292.4	292.4	1.000044
51500.0	114.4	-64.6			191.0	562.0	292.6	292.6	1.000043
52000.0	111.5	-65.1			186.8	562.0	292.8	292.8	1.000042
52500.0	108.8	-66.0			183.0	560.7	293.0	293.0	1.000041
53000.0	106.1	-66.9			179.3	559.5	293.1	293.1	1.000040
53500.0	103.5	-65.3			173.5	561.6	293.3	293.3	1.000039
54000.0	101.0	-63.1			167.4	564.7	293.6	293.6	1.000037
54500.0	98.5	-61.2			162.0	567.1	294.1	294.1	1.000036
55000.0	96.2	-59.6			156.9	569.3	295.1	295.1	1.000035
55500.0	93.9	-58.0			152.0	571.4	296.7	296.7	1.000034
56000.0	91.6	-57.7			148.1	571.9	298.4	298.4	1.000033
56500.0	89.4	-58.7			145.2	570.6	302.5	302.5	1.000032
57000.0	87.3	-59.7			142.4	569.2	304.7	304.7	1.000032
57500.0	85.2	-60.6			139.6	567.9	303.5	303.5	1.000031
58000.0	83.1	-61.6			136.9	566.6	301.5	301.5	1.000030
58500.0	81.1	-62.6			134.3	565.3	296.9	296.9	1.000030
59000.0	79.2	-63.4			131.5	564.3	293.9	293.9	1.000029
59500.0	77.3	-63.5			128.4	564.0	291.9	291.9	1.000029
60000.0	75.4	-63.7			125.4	563.8	290.3	290.3	1.000028
60500.0	73.5	-63.9			122.4	563.5	288.6	288.6	1.000027
61000.0	71.7	-64.1			119.6	563.3	285.6	285.6	1.000027
61500.0	70.0	-64.3			116.7	563.0	282.9	282.9	1.000026
62000.0	68.3	-61.2			112.3	567.1	280.6	280.6	1.000025
62500.0	66.7	-58.2			108.0	571.2	278.2	278.2	1.000024
63000.0	65.1	-58.4			105.5	571.0	275.7	275.7	1.000023

STATION ALTITUDE 3989.00 FEET MSL
 25 APR. 79 1330 HRS MST
 ASCENSION NO. 128

UPPER AIR DATA
 1150020186
 WHITE SANDS

GEODETIC COORDINATES
 32.40043 LAT DEG
 106.37033 LON DEG

GEOMETRIC ALTITUDE MSL FEET	PRESSURE MILLIBARS	TEMPERATURE AIR DEGREES CENTIGRADE	REL. HUM. PERCENT	DENSITY GM/CUBIC METER	SPEED OF SOUND KNOTS	WIND DATA DIRECTION DEGREES (TH)	SPEED KNOTS	INDEX OF REFRACTION
63500.0	63.5	-59.1		103.4	569.9	271.1	12.2	1.000023
64000.0	62.0	-59.9		101.3	568.9	257.7	6.0	1.000023
64500.0	60.5	-60.7		99.2	567.8	201.9	2.0	1.000022
65000.0	59.1	-60.9		96.9	567.6	118.3	5.0	1.000022
65500.0	57.7	-60.4		94.4	565.2	91.0	3.5	1.000021
66000.0	56.3	-59.9		92.0	568.8	9.0	3.3	1.000020
66500.0	54.9	-59.5		89.6	569.5	335.0	7.6	1.000020
67000.0	53.6	-59.0		87.2	570.1	323.7	13.5	1.000019
67500.0	52.3	-58.6		85.0	570.7	319.7	19.1	1.000019
68000.0	51.1	-58.1		82.8	571.3	321.2	18.1	1.000018
68500.0	49.9	-57.7		80.6	571.9	322.9	17.2	1.000018
69000.0	48.7	-57.3		78.6	572.3	327.1	14.3	1.000018
69500.0	47.6	-57.0		76.7	572.7	335.0	10.8	1.000017
70000.0	46.5	-56.7		74.8	573.2	345.5	8.3	1.000017
70500.0	45.4	-56.4		72.9	573.6	353.7	7.1	1.000016
71000.0	44.3	-56.0		71.1	574.0	4.8	6.1	1.000016
71500.0	43.3	-55.7		69.4	574.5	13.6	5.7	1.000015
72000.0	42.3	-55.4		67.6	574.9	23.5	5.4	1.000015
72500.0	41.3	-55.0		66.0	575.3	36.0	5.4	1.000015
73000.0	40.3	-54.7		64.2	575.8	48.2	5.8	1.000014
73500.0	39.4	-54.4		62.7	576.2	59.6	5.8	1.000014
74000.0	38.5	-54.1		61.2	576.6	73.8	5.4	1.000014
74500.0	37.6	-53.7		59.7	577.1	89.7	5.3	1.000013
75000.0	36.7	-53.4		58.2	577.5	109.4	4.8	1.000013
75500.0	35.9	-53.1		56.6	577.9	130.3	5.0	1.000013
76000.0	35.0	-52.7		55.3	578.4	134.5	5.2	1.000012
76500.0	34.2	-52.4		54.0	578.8	128.5	5.3	1.000012
77000.0	33.4	-52.1		52.6	579.2	121.8	5.4	1.000012
77500.0	32.6	-51.8		51.3	579.7	106.3	5.7	1.000011
78000.0	31.9	-51.4		50.1	580.1	92.9	6.3	1.000011
78500.0	31.1	-51.1		48.8	580.5	84.5	6.5	1.000011
79000.0	30.4	-50.8		47.6	580.9	77.9	6.5	1.000011
79500.0	29.7	-50.5		46.5	581.4	71.4	6.5	1.000010
80000.0	29.0	-50.1		45.3	581.8	67.1	6.3	1.000010
80500.0	28.4	-49.8		44.2	582.2	62.4	6.1	1.000010
81000.0	27.7	-49.5		43.2	582.7	59.1	5.9	1.000010
81500.0	27.1	-49.1		42.1	583.1	57.2	5.9	1.000009
82000.0	26.5	-48.8		41.1	583.5	55.2	5.8	1.000009
82500.0	25.9	-48.5		40.1	584.0	49.8	4.5	1.000009
83000.0	25.3	-48.1		39.2	584.4	39.5	3.2	1.000009

STATION ALTITUDE 3989.00 FEET MSL
 25 APR. 79 1330 HRS MST
 ASCENSION NO. 188

UPPER AIR DATA
 11500201bb
 WHITE SANDS

GEODETIC COORDINATES
 32.40043 LAT DEG
 106.37033 LON DEG

GEOMETRIC ALTITUDE MSL FEET	PRESSURE MILLIBARS	TEMPERATURE AIR DEGREES	REL. HUM. PERCENT	DENSITY GM/CUBIC METER	SPEED OF SOUND KNOTS	WIND DATA		INJEX OF REFRACTION
						DIRECTION DEGREES(TI)	SPEED KNOTS	
83500.0	24.7	-47.8		38.2	584.8	64.8	2.4	1.000009
84000.0	24.2	-47.5		37.3	585.3	112.2	5.3	1.000008
84500.0	23.6	-47.1		36.4	585.7	123.4	9.1	1.000008
85000.0	23.1	-46.8		35.5	586.1	127.5	13.4	1.000008
85500.0	22.6	-46.5		34.7	586.6	129.4	17.8	1.000008
86000.0	22.1	-46.1		33.8	587.0	130.5	22.3	1.000008
86500.0	21.6	-45.8		33.0	587.4	136.0	16.1	1.000007
87000.0	21.1	-45.5		32.2	587.9	151.8	8.9	1.000007
87500.0	20.6	-45.1		31.5	588.3	207.2	4.7	1.000007
88000.0	20.1	-44.8		30.7	588.7	248.4	4.3	1.000007
88500.0	19.7	-44.5		30.0	589.1			1.000007
89000.0	19.2	-44.1		29.3	589.6			1.000007
89500.0	18.8	-43.8		28.6	590.0			1.000006
90000.0	18.4	-43.5		27.9	590.4			1.000006
90500.0	18.0	-43.2		27.2	590.8			1.000006
91000.0	17.6	-42.8		26.6	591.2			1.000006

STATION ALTITUDE 3989.00 FEET MSL
 25 APR. 79 1330 HRS MST
 ASCENSION NO. 188

MRN SIGNIFICANT LEVEL DATA
 1150020180
 WHITE SANDS

GEODETIC COORDINATES
 32.40043 LAT DEG
 106.37033 LON DEG

GEOPOTENTIAL ALTITUDE DECAMETERS	DIRECTION DEG (TN)	WIND DATA		E-W MPS	DEW PT DEP DEG C	TEMPERATURE		PRESSURE MILLIBARS
		SPEED MPS	N-S MPS			AIR DEG C		
2775.	9999.**	9999.**	-9999.**	-9999.**	99	-42.5	1.720+1	
2674.	259.	4.	0.	2.	99	-44.7	2.000+1	
2406.	74.	3.	-1.	-3.	99	-50.6	3.000+1	
2078.	323.	9.	-7.	5.	99	-57.7	5.000+1	
1966.	140.	1.	1.	-1.	99	-61.1	5.980+1	
1901.	278.	11.	-2.	1.	99	-57.7	6.640+1.	
1865.	283.	12.	-3.	12.	99	-64.3	7.000+1	
1788.	295.	7.	-3.	7.	99	-63.3	7.980+1	
1694.	298.	12.	-6.	11.	99	-57.2	9.270+1	
1647.	294.	23.	-9.	21.	99	-62.2	1.000+2	

** WIND DATA NOT COMPUTED DUE TO MISSING RAW AZIMUTH AND ELEVATION ANGLES.

STATION ALTITUDE 3989.00 FEET MSL
 25 APR. 79 1330 HRS MST
 ASCENSION NO. 188

MANDATORY LEVELS
 1150020188
 WHITE SANDS

GEODETIC COORDINATES
 32.40043 LAT DEG
 106.37033 LON DEG

PRESSURE GEOPOTENTIAL		TEMPERATURE	REL. HUM.	#IND DATA	
MILLIBARS	FEET	AIR DEGREE CENTIGRADE	PERCENT	DIRECTION DEGREE(TN)	SPEED KNOTS
850.0	485.0	24.3	18.	267.0	9.5
800.0	657.0	19.6	20.	271.7	12.7
750.0	837.0	14.3	24.	278.6	13.8
700.0	1027.0	9.0	31.	284.0	16.3
650.0	1227.0	4.7	32.	270.3	27.1
600.0	1439.0	.5	31.	266.5	27.5
550.0	1664.0	-4.7	33.	260.5	24.0
500.0	1909.0	-10.5	37.	296.3	27.6
450.0	2173.0	-15.6	37.	287.8	38.3
400.0	2461.0	-21.0	32.	285.0	42.0
350.0	2780.0	-28.0	30.	286.7	46.0
300.0	3138.0	-36.0	28.	289.9	62.4
250.0	3544.0	-46.9		297.4	69.5
200.0	4018.0	-57.0		295.4	104.0
175.0	4291.0	-63.1		297.0	98.8
150.0	4599.0	-68.1		293.4	100.3
125.0	4958.0	-67.0		291.2	68.2
100.0	5402.0	-62.2		293.6	45.3
80.0	5859.0	-63.2		295.2	13.6
70.0	6128.0	-54.3		293.1	23.6
60.0	6444.0	-61.0		159.5	2.1
50.0	6818.0	-57.7		322.0	17.3
40.0	7284.0	-54.6		50.4	5.9
30.0	7894.0	-50.6		74.7	6.5
25.0	8266.0	-47.9		33.1	2.7
20.0	8720.0	-44.7		256.1	4.4

** AT LEAST ONE ASSUMED RELATIVE HUMIDITY VALUE WAS USED IN THE INTERPOLATION.

STATION ALTITUDE 3989.00 FEET MSL
 25 APR. 79
 ASCENSION NO. 188

MPR: MANDATORY LEVELS
 1150020188
 WHITE SANDS

GEODETIC COORDINATES
 32.40043 LAT DEG
 106.37033 LON DEG

GEOPOTENTIAL ALTITUDE DECAMETERS	DIRECTION WEG (TN)	WIND DATA		E-W MPS	DEW PT DLP DEG C	TEMPERATURE		PRESSURE MILLIBARS
		SPEED MPS	N-S MPS			AIR DEG C		
2674.	256.	4.	1.	2.	99	-44.7	2.000+1	
2526.	33.	1.	-1.	-1.	99	-47.9	2.500+1	
2406.	75.	3.	-1.	-3.	99	-50.6	3.000+1	
2220.	50.	3.	-2.	-2.	99	-54.6	4.000+1	
2078.	323.	9.	-7.	5.	99	-57.7	5.000+1	
1964.	159.	1.	1.	-0.	99	-61.0	6.000+1	
1868.	283.	12.	-3.	12.	99	-64.3	7.000+1	
1786.	295.	7.	-3.	0.	99	-63.2	8.000+1	
1647.	294.	23.	-9.	21.	99	-62.2	1.000+2	
1511.	291.	35.	-13.	33.	99	-67.0	1.250+2	
1402.	293.	52.	-21.	47.	99	-68.1	1.500+2	
1308.	297.	51.	-23.	45.	99	-63.1	1.750+2	
1225.	295.	53.	-23.	48.	99	-57.0	2.000+2	
1080.	297.	30.	-16.	32.	99	-46.9	2.500+2	
957.	290.	32.	-11.	30.	12	-36.0	3.000+2	
848.	287.	24.	-7.	23.	12	-28.0	3.500+2	
750.	285.	22.	-6.	21.	12	-21.0	4.000+2	
662.	288.	20.	-6.	19.	11	-15.6	4.500+2	
582.	296.	14.	-6.	13.	12	-10.5	5.000+2	
508.	281.	12.	-2.	12.	14	-4.7	5.500+2	
439.	266.	14.	1.	14.	15	.5	6.000+2	
374.	270.	14.	-0.	14.	15	4.7	6.500+2	
313.	265.	8.	-2.	0.	16	9.0	7.000+2	
255.	279.	7.	-1.	7.	21	14.3	7.500+2	
200.	272.	7.	-0.	7.	24	19.6	8.000+2	
148.	268.	5.	0.	5.	26	24.3	8.500+2	

STATION ALTITUDE 3997.30 FEET MSL
 25 APR. 79
 ASCENSION NO. 74

SIGNIFICANT LEVEL DATA
 1150060074
 S M R

GEODETIC COORDINATES
 32.48034 LAT DEG
 106.42307 LON DEG

PRESSURE MILLIBARS	GEOMETRIC ALTITUDE MSL FEET	TEMPERATURE AIR DEGREES CENTIGRADE	REL. HUM. PERCENT
874.3	3997.3	-1.4	13.0
669.8	4147.6	.5	17.0
850.0	4812.6	-2.5	16.0
772.8	7512.0	-6.8	19.0
700.0	10238.4	-8.1	30.0
675.3	11208.4	-8.2	37.0
665.8	11588.8	-9.6	33.0
656.8	11953.5	-9.4	36.0
647.8	12321.8	-9.6	39.0
642.4	12545.3	-12.8	27.0
632.5	12960.7	-13.2	27.0
559.8	16175.9	-19.8	28.0
500.0	19077.1	-21.1	44.0
432.8	22601.8	-29.1	38.0
400.0	24564.7	-33.4	34.0
355.8	27362.8	-38.8	37.0
300.0	31334.1	-37.1	30.0
293.3	31847.4	-49.9	27.0
250.0	35398.9	-38.0	
224.8	37668.0	-47.3	
200.0	40148.4	-52.4	
175.8	42792.0	-57.7	
154.8	45338.9	-63.9	
150.0	45963.8	-67.7	
136.3	47856.9	-69.3	
119.3	50490.5	-67.7	
117.3	50828.4	-64.8	
112.3	51704.3	-65.3	
105.6	52894.9	-67.7	
102.8	53466.7	-67.2	
100.0	54020.7	-63.9	
94.6	55153.9	-60.0	
70.0	61305.0	-63.8	
67.3	62110.8	-58.9	
60.8	64199.5	-62.2	
57.3	65412.4	-61.2	

STATION ALTITUDE 3997.30 FEET MSL
 25 APR. 79
 ASCENSION NO. 74

UPPER AIR DATA
 1150060074
 S M R

GEODETIC COORDINATES
 32.48034 LAT DEG
 106.42307 LON DEG

GEOMETRIC ALTITUDE MSL FEET	PRESSURE MILLIBARS	TEMPERATURE AIR DEGREES	TEMPERATURE DEWPOINT DEGREES	REL. HUM. PERCENT	DENSITY GM/CUBIC METER	SPEED OF SOUND KNOTS	WIND DATA DIRECTION DEGREES(TN)	SPEED KNOTS	INDEX OF REFRACTION
3997.3	874.3	30.0	-1.4	13.0	1002.3	679.1	210.0	5.1	1.000246
4000.0	874.2	30.0	-1.4	13.1	1002.3	679.1	210.1	5.1	1.000246
4500.0	859.3	26.3	-1.1	16.5	997.2	675.0	221.4	5.9	1.000246
5000.0	844.4	24.4	-2.8	16.2	986.3	672.8	229.7	6.9	1.000241
5500.0	829.6	22.9	-3.6	16.8	974.0	671.1	235.7	8.0	1.000237
6000.0	815.1	21.4	-4.4	17.3	962.0	669.3	241.4	8.7	1.000234
6500.0	800.9	19.9	-5.2	17.9	950.1	667.6	250.4	8.2	1.000230
7000.0	786.9	18.4	-6.0	18.4	938.3	665.9	259.9	7.9	1.000226
7500.0	773.1	16.9	-6.8	19.0	926.8	664.1	262.4	8.2	1.000223
8000.0	759.2	15.4	-6.8	21.0	915.0	662.4	264.7	8.5	1.000221
8500.0	745.6	13.9	-6.9	23.0	903.3	660.6	267.3	8.7	1.000218
9000.0	732.2	12.3	-7.1	25.0	891.9	658.8	271.4	8.4	1.000215
9500.0	719.0	10.8	-7.4	27.0	880.6	657.0	275.7	8.1	1.000213
10000.0	706.1	9.2	-7.8	29.0	869.5	655.3	277.6	7.8	1.000210
10500.0	693.3	7.6	-8.0	31.9	858.5	653.4	277.3	7.3	1.000207
11000.0	680.5	6.0	-8.1	35.5	847.7	651.5	271.5	8.8	1.000205
11500.0	668.0	5.3	-9.3	33.9	834.3	650.6	270.1	14.8	1.000201
12000.0	655.7	4.1	-9.4	36.4	822.3	649.3	272.9	24.6	1.000198
12500.0	643.5	4.3	-12.0	29.4	806.9	649.4	272.1	29.0	1.000192
13000.0	631.6	4.0	-13.3	27.0	792.8	649.0	269.6	30.1	1.000187
13500.0	619.7	2.7	-14.3	27.2	781.5	647.5	271.0	29.4	1.000184
14000.0	608.0	1.5	-15.3	27.3	770.4	646.0	273.6	28.2	1.000181
14500.0	596.6	.2	-16.3	27.5	759.4	644.5	276.2	25.8	1.000178
15000.0	585.4	-1.0	-17.3	27.6	748.6	643.0	279.5	23.1	1.000175
15500.0	574.4	-2.3	-18.4	27.8	738.0	641.5	281.7	22.8	1.000172
16000.0	563.6	-3.6	-19.4	27.9	727.6	639.9	283.5	23.2	1.000169
16500.0	552.8	-4.8	-19.8	29.8	717.0	638.4	287.2	23.6	1.000166
17000.0	542.1	-6.1	-19.8	32.6	706.4	636.9	292.7	24.2	1.000164
17500.0	531.6	-7.3	-20.0	35.3	696.1	635.4	296.3	25.4	1.000162
18000.0	521.3	-8.6	-20.3	38.1	685.9	633.9	297.0	27.3	1.000159
18500.0	511.2	-9.9	-20.6	40.9	675.8	632.4	297.4	29.4	1.000157
19000.0	501.3	-11.1	-21.0	43.6	665.9	630.9	297.6	32.2	1.000155
19500.0	491.4	-12.1	-22.0	43.3	655.3	629.6	298.0	35.4	1.000152
20000.0	481.6	-13.1	-23.2	42.4	644.7	628.4	298.5	38.9	1.000149
20500.0	472.0	-14.1	-24.3	41.6	634.3	627.3	297.5	39.6	1.000146
21000.0	462.7	-15.1	-25.4	40.8	624.1	626.1	295.6	39.0	1.000143
21500.0	453.5	-16.0	-26.5	39.9	614.1	624.9	292.8	36.7	1.000141
22000.0	444.5	-17.0	-27.6	39.1	604.2	623.7	289.1	36.7	1.000138
22500.0	435.6	-18.0	-28.7	38.3	594.4	622.5	287.8	38.0	1.000136
23000.0	426.8	-18.9	-29.8	37.3	584.6	621.3	288.6	40.1	1.000133

STATION ALTITUDE 3997.30 FEET MSL
 25 APR. 79 1340 HRS MST
 ASCENSION NO. 74

UPPER AIR DATA
 1150060074
 S M R

GEODETIC COORDINATES
 32.48034 LAT DEG
 106.42307 LON DEG

GEOMETRIC ALTITUDE MSL FEET	PRESSURE MILLIBARS	TEMPERATURE AIR DEGREES CENTIGRADE	REL. HUM. PERCENT	DENSITY GM/CUBIC MLTER	SPEED OF SOUND KNOTS	WIND DATA DIRECTION (TN) DEGREES	SPEED KNOTS	INJEX OF REFRACTION
23500.0	418.2	-19.8	36.3	574.8	620.2	289.7	41.1	1.000131
24000.0	409.7	-20.7	35.2	565.2	619.1	290.0	42.2	1.000128
24500.0	401.4	-21.6	34.2	555.8	617.9	288.0	43.7	1.000126
25000.0	393.1	-22.8	34.4	546.9	616.5	286.3	44.0	1.000124
25500.0	385.0	-24.1	35.0	536.3	614.9	284.6	43.4	1.000122
26000.0	377.0	-25.3	35.5	529.8	613.4	285.6	43.6	1.000120
26500.0	369.2	-26.6	36.1	521.5	611.8	287.0	44.3	1.000118
27000.0	361.5	-27.8	36.6	513.3	610.2	287.8	47.2	1.000116
27500.0	354.0	-29.0	36.8	505.1	608.7	269.0	49.4	1.000114
28000.0	346.4	-30.1	35.9	496.5	607.4	290.7	50.5	1.000112
28500.0	339.0	-31.1	35.0	486.0	606.1	293.8	51.4	1.000110
29000.0	331.8	-32.2	34.1	479.6	604.8	297.4	52.5	1.000108
29500.0	324.7	-33.2	33.2	471.5	603.5	297.0	56.4	1.000106
30000.0	317.8	-34.3	32.4	463.4	602.1	295.8	60.0	1.000104
30500.0	311.0	-35.3	31.5	455.5	600.8	293.7	63.3	1.000102
31000.0	304.4	-36.4	30.6	447.8	599.5	294.3	62.1	1.000100
31500.0	297.8	-37.4	29.0	440.0	598.2	295.5	60.8	1.000098
32000.0	291.3	-38.4	25.8**	432.2	596.9	297.8	60.2	1.000097
32500.0	284.8	-39.7	22.0**	425.0	595.2	299.6	60.8	1.000095
33000.0	278.5	-41.0	18.2**	417.9	593.6	301.1	62.3	1.000093
33500.0	272.3	-42.3	14.4**	410.9	591.9	301.7	63.8	1.000092
34000.0	266.2	-43.6	10.6**	404.1	590.2	301.9	65.4	1.000090
34500.0	260.3	-44.9	6.8**	347.4	588.5	301.2	66.6	1.000089
35000.0	254.5	-46.3	3.0**	390.8	586.8	300.4	67.9	1.000087
35500.0	248.8	-47.5		384.2	585.2	298.9	70.8	1.000086
36000.0	243.1	-48.6		377.2	583.7	297.5	74.0	1.000084
36500.0	237.5	-49.8		370.4	582.3	296.8	77.9	1.000083
37000.0	232.1	-50.9		363.7	580.8	296.2	82.0	1.000081
37500.0	226.8	-52.0		357.2	579.4	296.3	85.5	1.000080
38000.0	221.5	-53.1		350.6	577.9	296.7	88.9	1.000078
38500.0	216.3	-54.1		344.1	576.5	297.2	92.0	1.000077
39000.0	211.2	-55.2		337.6	575.1	297.7	95.0	1.000075
39500.0	206.3	-56.3		331.4	573.7	298.1	98.0	1.000074
40000.0	201.4	-57.4		325.2	572.3	298.5	101.0	1.000072
40500.0	196.6	-58.5		319.1	570.7	298.9	104.5	1.000071
41000.0	191.9	-59.7		313.1	569.2	299.2	109.4	1.000070
41500.0	187.2	-60.9		307.3	567.6	299.5	114.3	1.000068
42000.0	182.7	-62.0		301.5	566.0	299.5	119.5	1.000067
42500.0	178.3	-63.2		295.9	564.5	299.5	124.3	1.000066
43000.0	174.0	-64.2		290.1	563.1	299.4	121.2	1.000065

** AT LEAST ONE ASSUMED RELATIVE HUMIDITY VALUE WAS USED IN THE INTERPOLATION.

STATION ALTITUDE 3997.30 FEET MSL
 25 APR. 79 1340 HRS MST
 ASCENSION NO. 74

UPPER AIR DATA
 1150060074
 S M R

GEODETIC COORDINATES
 32.48034 LAT DEG
 106.42307 LON DEG

GEOMETRIC ALTITUDE MSL FEET	PRESSURE MILLIBARS	TEMPERATURE AIR DEGREES	DEWPOINT DEGREES	REL. HUM. PERCENT	DENSITY GM/CUBIC METER	SPEED OF SOUND KNOTS	WIND DIRECTION DEGREES(TN)	WIND SPEED KNOTS	INDEX OF REFRACTION
43500.0	169.7	-65.0	-65.7	65.0	283.9	562.1	299.2	118.0	1.000063
44000.0	165.5	-65.7	-66.4	65.1	277.9	561.1	299.2	108.3	1.000062
44500.0	161.4	-66.4	-67.2	66.1	272.1	560.1	299.3	98.1	1.000061
45000.0	157.4	-67.2	-67.7	67.2	266.3	559.1	299.1	90.8	1.000059
45500.0	153.5	-67.7	-68.2	67.7	260.4	558.4	298.8	84.1	1.000058
46000.0	149.7	-68.2	-68.6	68.2	253.9	558.4	298.2	80.1	1.000057
46500.0	146.0	-68.6	-69.0	68.6	248.1	557.8	297.6	77.6	1.000055
47000.0	142.3	-69.0	-69.2	69.0	242.4	557.2	296.8	76.5	1.000054
47500.0	138.8	-69.2	-68.9	69.2	236.8	556.6	295.8	78.0	1.000053
48000.0	135.3	-68.9	-68.6	68.9	231.1	556.3	294.9	79.5	1.000051
48500.0	131.9	-68.6	-68.0	68.6	225.0	556.8	294.2	82.2	1.000050
49000.0	128.6	-68.0	-67.6	68.0	219.1	557.2	293.6	84.9	1.000049
49500.0	125.4	-67.6	-65.2	67.6	213.3	557.6	293.3	86.4	1.000048
50000.0	122.3	-67.6	-65.2	67.7	207.7	558.0	293.7	85.9	1.000046
50500.0	119.2	-65.2	-65.2	65.2	202.1	558.5	294.0	85.4	1.000045
51000.0	116.3	-65.2	-65.2	65.2	194.6	562.2	294.7	82.6	1.000043
51500.0	113.4	-65.2	-65.2	65.2	190.0	561.8	295.6	79.2	1.000042
52000.0	110.6	-65.9	-66.9	65.9	186.0	560.9	296.5	74.5	1.000041
52500.0	107.9	-66.9	-67.6	66.9	182.3	559.5	297.1	66.5	1.000041
53000.0	105.2	-67.6	-67.0	67.6	178.4	558.5	298.0	58.4	1.000040
53500.0	102.6	-67.0	-64.0	67.0	173.4	559.4	298.9	48.1	1.000039
54000.0	100.1	-64.0	-62.3	64.0	160.8	563.4	300.2	37.1	1.000037
54500.0	97.7	-62.3	-60.5	62.3	161.3	563.8	301.6	28.9	1.000036
55000.0	95.3	-60.5	-60.2	60.5	156.2	568.1	303.0	23.0	1.000035
55500.0	93.0	-60.2	-60.5	60.2	152.2	568.5	304.2	19.2	1.000034
56000.0	90.8	-60.5	-60.8	60.5	148.7	568.1	303.6	19.9	1.000033
56500.0	88.6	-60.8	-61.1	60.8	145.3	567.7	302.9	20.9	1.000032
57000.0	86.4	-61.1	-61.4	61.1	142.0	567.2	300.7	24.2	1.000032
57500.0	84.3	-61.4	-61.8	61.4	138.8	566.8	299.1	27.5	1.000031
58000.0	82.3	-61.8	-62.1	61.8	135.6	566.4	297.2	28.8	1.000030
58500.0	80.3	-62.1	-62.4	62.1	132.5	566.0	294.8	28.8	1.000030
59000.0	78.4	-62.4	-63.0	62.4	129.5	565.6	292.5	28.8	1.000029
59500.0	76.5	-62.7	-63.3	62.7	126.6	565.2	289.8	24.9	1.000028
60000.0	74.6	-63.0	-63.6	63.0	123.7	564.8	286.1	21.0	1.000028
60500.0	72.8	-63.3	-63.6	63.3	120.9	564.3	281.9	16.9	1.000027
61000.0	71.1	-63.6	-63.6	63.6	116.1	563.9	277.0	12.3	1.000026
61500.0	69.3	-63.6	-59.6	63.6	114.7	563.3	266.5	7.9	1.000026
62000.0	67.7	-59.6	-59.5	59.6	110.4	569.3	245.7	4.2	1.000025
62500.0	66.0	-59.5	-60.3	59.5	107.7	569.4	177.5	2.8	1.000024
63000.0	64.5	-60.3	-60.3	60.3	105.5	568.4	136.7	5.0	1.000023

STATION ALTITUDE 3997.30 FEET MSL
 25 APR. 79 1340 HRS MST
 ASCENSION NO. 74

UPPER AIR DATA
 1150000074
 S M R

GEODETIC COORDINATES
 32.48034 LAT DEG
 106.42307 LON DEG

GEOMETRIC ALTITUDE MSL FEET	PRESSURE MILLIBARS	TEMPERATURE AIR DEGREES	REL. HUM. PERCENT	DENSITY GM/CUBIC METER	SPEED OF SOUND KNOTS	WIND DIRECTION DEGREES(TN)	WIND SPEED KNOTS	INDEX OF REFRACTION
63500.0	62.9	-61.1		103.3	567.3	127.7	6.0	1.000023
64000.0	61.4	-61.9		101.2	566.3	121.4	7.1	1.000023
64500.0	59.9	-62.0		98.8	566.2			1.000022
65000.0	58.5	-61.5		96.3	566.7			1.000021

STATION ALTITUDE 3997.30 FEET MSL
 25 APR. 79 1340 HRS MST
 ASCENSION NO. 74

MRN SIGNIFICANT LEVEL DATA
 1150060074
 S M R

GEODETIC COORDINATES
 32.48034 LAT DEG
 106.42307 LON DEG

GEOPOTENTIAL ALTITUD DECAMETERS	DIRECTION DEG (TN)	WIND DATA		E-W MPS	DEW PT DEP DEG C	TEMPERATURE		PRESSURE MILLIBARS
		SPEED MPS	N-S MPS			AIR DEG C		
1967.	9999.**	9999.**	-9999.**	-9999.**	99	-61.2		5.730+1
1950.	9999.**	9999.**	-9999.**	-9999.**	99	-62.2		6.080+1
1887.	236.	2.	1.	2.	99	-58.9		6.730+1
1862.	272.	5.	-0.	5.	99	-63.8		7.000+1
1676.	304.	11.	-6.	9.	99	-60.0		9.460+1
1041.	300.	19.	-10.	16.	99	-63.9		1.000+2

** WIND DATA NOT COMPUTED DUE TO MISSING RAW AZIMUTH AND ELEVATION ANGLES.

STATION ALTITUDE 3997.30 FEET MSL
 25 APR. 79 1340 HRS MST
 ASCENSION NO. 74

MANDATORY LEVELS
 1150060074
 S M R

GEODETIC COORDINATES
 32.48034 LAT DEG
 106.42307 LON DEG

PRESSURE GEOPOTENTIAL		TEMPERATURE		REL. HUM.	WIND DATA	
MILLIBARS	FEET	AIR DEGREES	DEWPOINT CENTIGRADE	PERCENT	DIRECTION DEGREES(TN)	SPEED KNOTS
850.0	4809.	25.0	-2.5	18.	226.8	6.5
800.0	6535.	19.8	-5.2	18.	251.2	8.1
750.0	8338.	14.4	-6.9	22.	266.2	8.7
700.0	10228.	8.5	-8.1	30.	277.5	7.6
650.0	12218.	3.3	-9.5	30.	272.8	27.1
600.0	14345.	.6	-16.0	27.	275.4	26.6
550.0	16612.	-5.1	-19.6	31.	288.6	23.7
500.0	19040.	-11.3	-21.1	44.	297.6	32.6
450.0	21668.	-16.4	-26.9	40.	291.4	36.7
400.0	24544.	-21.8	-33.4	34.	287.8	43.9
350.0	27719.	-29.6	-39.7	36.	289.9	49.9
300.0	31272.	-37.1	-48.2	30.	294.7	61.0
250.0	35324.	-47.3			299.3	70.1
200.0	40052.	-57.7			298.6	101.8
175.0	42775.	-64.0			299.4	122.0
150.0	45840.	-67.7			298.3	80.4
125.0	49424.	-68.3			293.4	80.3
100.0	53855.	-63.9			300.2	37.3
80.0	58398.	-62.1			294.5	28.8
70.0	61095.	-63.8			272.4	9.8
60.0	64240.	-62.0				

** AT LEAST ONE ASSUMED RELATIVE HUMIDITY VALUE WAS USED IN THE INTERPOLATION.

STATION ALTITUDE 3997.30 FEET MSL
 25 APR. 79 1340 HRS MST
 ASCENSION NO. 74

MRN MANDATORY LEVELS
 115006U074
 S M R

GEODETIC COORDINATES
 32.48034 LAT DEG
 106.42307 LON DEG

GEOPOTENTIAL ALTITUDE METERS	DIRECTION DEG (TN)	SPEED MPS	WIND DATA		E-W MPS	DEW PT DEP DEG C	TEMPERATURE		PRESSURE MILLIBARS
			N-S MPS	MPS			AIR DEG C		
1958.	9999.**	9999.**	-9999.**	-9999.**	-9999.**	99	-62.0		6.000+1
1862.	272.	5.	-0.	5.	5.	99	-63.8		7.000+1
1780.	295.	15.	-6.	15.	13.	99	-62.1		8.000+1
1641.	300.	19.	-10.	19.	17.	99	-63.9		1.000+2
1506.	293.	44.	-18.	44.	41.	99	-68.3		1.250+2
1397.	298.	41.	-20.	41.	36.	99	-67.7		1.500+2
1304.	299.	65.	-31.	65.	55.	99	-64.0		1.750+2
1221.	299.	52.	-25.	52.	46.	99	-57.7		2.000+2
1077.	299.	36.	-18.	36.	31.	99	-47.3		2.500+2
953.	295.	31.	-13.	31.	29.	11	-37.1		3.000+2
845.	290.	26.	-9.	26.	24.	10	-29.6		3.500+2
748.	288.	25.	-7.	25.	22.	12	-21.8		4.000+2
660.	291.	19.	-7.	19.	18.	10	-16.4		4.500+2
560.	298.	17.	-8.	17.	15.	10	-11.3		5.000+2
506.	289.	14.	-4.	14.	12.	15	-5.1		5.500+2
437.	275.	14.	-1.	14.	14.	17	.6		6.000+2
372.	273.	14.	-1.	14.	14.	13	3.3		6.500+2
312.	277.	4.	-1.	4.	4.	17	8.5		7.000+2
254.	266.	4.	0.	4.	4.	21	14.4		7.500+2
199.	251.	4.	1.	4.	4.	25	19.8		8.000+2
147.	227.	3.	2.	3.	2.	28	25.0		8.500+2

** WIND DATA NOT COMPUTED DUE TO MISSING RAW AZIMUTH AND ELEVATION ANGLES.

STATION ALTITUDE 4126.59 FEET MSL
 25 APR. 79 1300 HRS MST
 ASCENSION NO. 199

SIGNIFICANT LEVEL DATA
 1150010199
 HOLLOWMAN

GEODETIC COORDINATES
 32.88865 LAT DEG
 106.09965 LON DEG

PRESSURE MILLIBARS	GEOMETRIC ALTITUDE MSL FEET	TEMPERATURE AIR DEGREES CENTIGRADE	DEWPOINT DEGREES CENTIGRADE	REL. HUM. PERCENT
872.3	4126.6	24.9	1.7	22.0
862.0	4466.8	22.7	-1.1	22.0
850.0	4866.3	22.0	-1.7	22.0
792.8	6830.2	16.4	-3.7	25.0
700.0	10248.1	6.8	-7.6	35.0
663.0	11703.3	2.7	-8.9	42.0
610.6	13863.9	.4	-12.4	38.0
500.0	19041.9	-11.2	-23.3	36.0
422.4	23236.1	-19.1	-31.0	34.0
400.0	24561.1	-22.7	-33.3	37.0
374.6	26138.2	-24.9	-36.7	32.0
300.0	31317.1	-37.7	-46.9	37.0
282.6	32604.5	-41.0	-50.4	36.0
250.0	35369.0	-47.8		
234.4	36755.9	-52.3		
200.0	40092.3	-58.3		
174.0	42938.1	-64.6		
150.0	45889.4	-69.8		
142.4	46909.5	-70.2		
133.0	48254.7	-68.2		
125.3	49431.6	-69.5		
120.6	50193.2	-64.4		
113.6	51393.9	-65.2		
110.4	51967.5	-64.6		
107.0	52600.2	-63.0		

STATION ALTITUDE 4126.59 FEET MSL
 25 APR. 79 1300 HRS MST
 ASCENSION NO. 199

UPPER AIR DATA
 1150010199
 HOLLOMAN

GEODETIC COORDINATES
 32.88865 LAT DEG
 106.09965 LON DEG

GEOMETRIC ALTITUDE MSL FEET	PRESSURE MILLIBARS	TEMPERATURE AIR DEGREES	DEWPOINT CENTIGRADE	REL. HUM. PERCENT	DENSITY GM/CUBIC METER	SPEED OF SOUND KNOTS	WIND DIRECTION DEGREES(TN)	WIND SPEED KNOTS	INDEX OF REFRACTION
4126.6	872.3	24.9	1.7	22.0	1016.5	673.6	260.0	7.0	1.000256
4500.0	861.0	22.6	-1.1	22.0	1011.3	670.9	273.5	6.8	1.000252
5000.0	846.0	21.6	-1.9	22.2	997.2	669.7	291.2	7.3	1.000247
5500.0	831.1	20.2	-1.6	23.0	984.6	668.1	305.7	8.2	1.000243
6000.0	816.5	18.8	-2.3	23.7	972.1	666.4	315.6	8.9	1.000239
6500.0	802.1	17.3	-3.1	24.5	959.8	664.7	322.4	9.0	1.000236
7000.0	787.9	15.9	-3.8	25.5	947.4	663.1	326.1	9.0	1.000232
7500.0	773.7	14.5	-4.3	27.0	934.9	661.5	326.9	9.9	1.000229
8000.0	759.7	13.1	-4.8	28.4	922.6	659.8	327.4	10.8	1.000225
8500.0	746.0	11.7	-5.3	29.9	910.4	658.2	327.9	11.5	1.000222
9000.0	732.6	10.3	-5.9	31.3	898.5	656.6	328.3	12.5	1.000219
9500.0	719.3	8.9	-6.5	32.8	886.7	654.9	328.9	13.5	1.000215
10000.0	706.4	7.5	-7.2	34.3	875.1	653.3	319.3	14.4	1.000212
10500.0	693.5	6.1	-7.8	36.2	863.5	651.8	312.7	15.6	1.000209
11000.0	680.6	4.7	-8.2	38.6	851.9	650.0	306.8	17.0	1.000206
11500.0	668.0	3.3	-8.7	41.0	840.4	648.3	301.4	19.5	1.000203
12000.0	655.6	2.4	-9.4	41.5	827.5	647.2	297.0	24.3	1.000199
12500.0	643.4	1.9	-10.1	40.5	813.6	646.0	289.7	29.0	1.000195
13000.0	631.3	1.3	-10.9	39.6	800.0	645.9	282.7	34.0	1.000192
13500.0	619.5	.8	-11.5	38.7	788.6	645.3	275.7	34.3	1.000188
14000.0	607.9	.1	-12.5	38.0	773.7	644.5	269.1	34.9	1.000184
14500.0	596.2	-1.0	-13.6	37.8	762.1	643.1	266.0	34.8	1.000181
15000.0	584.8	-2.1	-14.6	37.6	750.6	641.8	263.2	34.8	1.000177
15500.0	573.5	-3.2	-15.7	37.4	739.4	640.4	266.1	33.9	1.000174
16000.0	562.5	-4.4	-16.8	37.2	728.3	639.1	269.4	33.1	1.000171
16500.0	551.7	-5.5	-17.8	37.0	717.4	637.7	275.6	31.3	1.000168
17000.0	541.2	-6.6	-18.9	36.8	706.6	636.3	282.5	30.0	1.000165
17500.0	530.8	-7.7	-20.0	36.6	696.0	635.0	288.9	30.2	1.000162
18000.0	520.6	-8.9	-21.0	36.4	685.8	633.6	295.2	30.8	1.000159
18500.0	510.6	-10.0	-22.1	36.2	675.4	632.2	296.6	32.0	1.000156
19000.0	500.8	-11.1	-23.2	36.0	665.3	630.9	296.7	33.3	1.000153
19500.0	490.9	-12.1	-24.1	35.8	654.5	629.7	298.1	34.9	1.000151
20000.0	481.1	-13.0	-25.0	35.5	643.9	628.5	295.1	36.7	1.000148
20500.0	471.5	-13.9	-25.9	35.3	633.4	627.4	294.5	38.0	1.000145
21000.0	462.1	-14.9	-26.9	35.1	623.0	626.2	294.0	39.1	1.000143
21500.0	452.9	-15.8	-27.8	34.8	612.9	625.1	291.3	39.2	1.000140
22000.0	443.9	-16.8	-28.7	34.6	602.9	623.9	288.0	39.1	1.000138
22500.0	435.1	-17.7	-29.6	34.4	593.1	622.8	287.1	40.5	1.000135
23000.0	426.4	-18.7	-30.5	34.1	583.5	621.8	286.9	41.5	1.000133
23500.0	417.8	-19.8	-31.4	34.6	574.4	620.2	286.0	42.1	1.000131

STATION ALTITUDE 4126.59 FEET MSL
 25 APR. 79 1300 HRS MST
 ASCENSION 110. 199

UPPER AIR DATA
 1150010199
 HOLLOWMAN

GEODETIC COORDINATES
 32.88865 LAT DEG
 106.09965 LON DEG

GEOMETRIC ALTITUDE MSL FEET	PRESSURE MILLIBARS	TEMPERATURE AIR DEGREES	TEMPERATURE DEWPOINT DEGREES	REL. HUM. PERCENT	DENSITY GM/CUBIC METER	SPEED OF SOUND KNOTS	WIND DIRECTION DEGREES(TN)	WIND SPEED KNOTS	INJEX OF REFRACTION
24000.0	409.3	-21.2	-32.3	35.7	565.7	618.3	289.4	42.9	1.000128
24500.0	401.0	-22.5	-33.2	35.9	557.2	616.8	291.1	44.0	1.000126
25000.0	392.8	-23.3	-34.3	35.6	547.5	615.9	291.1	46.5	1.000124
25500.0	384.7	-24.0	-35.3	34.0	537.7	615.0	290.7	49.3	1.000122
26000.0	376.8	-24.7	-36.4	32.4	528.2	614.1	289.5	49.5	1.000119
26500.0	368.8	-25.8	-37.4	32.3	519.3	612.8	288.1	49.4	1.000117
27000.0	361.0	-27.0	-38.4	32.8	510.9	611.2	288.2	50.0	1.000115
27500.0	353.4	-28.3	-39.4	33.3	502.8	609.7	288.5	50.8	1.000113
28000.0	345.9	-29.5	-40.3	33.8	494.4	608.2	288.8	53.2	1.000111
28500.0	338.5	-30.7	-41.3	34.3	486.4	606.6	289.0	55.3	1.000109
29000.0	331.3	-32.0	-42.3	34.8	478.5	605.1	288.9	57.0	1.000108
29500.0	324.3	-33.2	-43.3	35.2	470.8	603.5	289.4	57.8	1.000106
30000.0	317.4	-34.4	-44.3	35.7	463.2	601.9	290.6	57.6	1.000104
30500.0	310.7	-35.7	-45.3	36.2	455.7	600.4	291.8	58.2	1.000102
31000.0	304.1	-36.9	-46.3	36.7	448.4	598.8	293.1	59.3	1.000101
31500.0	297.6	-38.1	-47.4	36.9	441.1	597.2	292.4	60.8	1.000099
32000.0	291.1	-39.4	-48.6	35.5	433.7	595.7	290.8	62.6	1.000097
32500.0	284.7	-40.6	-49.8	36.1	426.4	594.1	289.8	62.9	1.000095
33000.0	278.3	-41.8	-52.0	31.5**	419.2	592.5	286.8	62.7	1.000094
33500.0	272.1	-43.1	-55.1	24.9**	412.0	590.9	286.3	62.6	1.000092
34000.0	266.0	-44.4	-58.7	18.2**	405.0	589.3	286.1	62.5	1.000090
34500.0	260.0	-45.6	-63.2	11.6**	398.1	587.7	286.6	63.5	1.000089
35000.0	254.2	-46.9	-70.3	4.9**	391.4	586.0	287.2	64.6	1.000087
35500.0	248.5	-48.2			384.9	584.3	283.1	67.2	1.000086
36000.0	242.8	-49.8			378.7	582.2	289.1	70.3	1.000084
36500.0	237.2	-51.5			372.8	580.0	290.5	72.3	1.000083
37000.0	231.7	-52.7			366.2	578.4	292.3	73.8	1.000082
38000.0	226.2	-53.6			359.1	577.2	294.0	75.5	1.000080
38500.0	220.9	-54.5			352.1	576.0	295.8	77.4	1.000078
39000.0	215.7	-55.4			345.2	574.8	297.1	79.9	1.000077
39500.0	210.7	-56.3			338.5	573.8	297.1	84.7	1.000075
40000.0	205.7	-57.2			331.9	572.4	297.0	89.5	1.000074
40500.0	200.9	-58.1			325.5	571.3	296.8	95.3	1.000072
41000.0	196.0	-59.2			319.2	569.8	296.1	101.5	1.000071
41500.0	191.3	-60.3			313.1	568.4	295.6	107.1	1.000070
42000.0	186.7	-61.4			307.2	566.9	295.6	111.5	1.000068
42500.0	182.2	-62.5			301.3	565.4	295.5	115.9	1.000067
43000.0	177.6	-63.6			295.6	563.9	295.5	114.8	1.000066
43500.0	173.5	-64.7			289.9	562.5	295.5	113.6	1.000065
44000.0	169.2	-65.6			283.9	561.3	295.5	111.8	1.000063

** AT LEAST ONE ASSUMED RELATIVE HUMIDITY VALUE WAS USED IN THE INTERPOLATION.

STATION ALTITUDE 4126.59 FEET MSL
 25 APR. 79 1300 HRS MST
 ASCENSION NO. 199

UPPER AIR DATA
 1150010199
 HOLLOWAN

GEODETTIC COORDINATES
 32.88865 LAT DEG
 106.09965 LON DEG

GEOMETRIC ALTITUDE MSL FEET	PRESSURE MILLIBARS	TEMPERATURE AIR DEGREES CENTIGRADE	REL HUM. PERCENT	DENSITY GM/CUBIC METER	SPEED OF SOUND KNOTS	WIND DIRECTION DEGREES(TM)	WIND SPEED KNOTS	INDEX OF REFRACTION
4400.0	165.0	-66.5		278.0	560.1	295.6	109.7	1.000062
4450.0	160.9	-67.4		272.3	556.9	295.5	109.2	1.000061
4500.0	156.9	-68.2		266.7	557.7	295.3	110.9	1.000059
4550.0	153.0	-69.1		261.2	556.5	295.0	112.4	1.000058
4600.0	149.2	-69.8		255.6	555.5	294.8	112.3	1.000057
4650.0	145.4	-70.0		249.4	555.2	294.5	112.3	1.000056
4700.0	141.7	-70.1		243.1	555.2	294.7	106.7	1.000054
4750.0	138.2	-69.3		236.2	555.2	295.0	100.6	1.000053
4800.0	134.7	-68.6		229.4	557.2	295.1	94.6	1.000051
4850.0	131.4	-68.5		223.6	557.4	295.2	88.7	1.000050
4900.0	128.1	-69.0		218.6	556.0	295.0	83.1	1.000049
4950.0	124.9	-69.0		213.1	556.0	294.7	77.7	1.000047
5000.0	121.8	-65.7		204.5	561.1	294.1	68.7	1.000046
5050.0	118.6	-64.9		196.6	562.3	293.4	59.2	1.000044
5100.0	115.9	-65.6		194.5	561.2	291.2	51.3	1.000043
5150.0	113.0	-65.9		189.9	560.8			1.000042
5200.0	110.2	-64.5		184.0	562.7			1.000041
5250.0	107.5	-63.3		178.5	564.4			1.000040

STATION ALTITUDE 4126.59 FEET MSL
 25 APR. 79 1300 HRS MST
 ASCENSION NO. 199

MANDATORY LEVELS
 1130010199
 HOLLOWAN

GEODETIC COORDINATES
 32.88865 LAT DEG
 106.09965 LON DEG

PRESSURE GEOPOTENTIAL		TEMPERATURE		REL. HUM.		WIND DATA	
MILLIBARS	FEET	AIR DEGREE	DEWPOINT DEGREE	PERCENT	DIRECTION DEGREE	SPEED KNOTS	
850.0	4865.	22.0	-7	22.	286.0	7.1	
800.0	6572.	17.1	-3.2	25.	323.3	9.0	
750.0	9361.	12.1	-5.1	29.	327.8	11.3	
700.0	10230.	6.8	-7.6	35.	316.0	14.9	
650.0	12217.	2.1	-9.7	41.	294.7	26.4	
600.0	14329.	-6	-13.2	38.	207.0	34.9	
550.0	16589.	-5.7	-18.0	37.	277.0	31.0	
500.0	19010.	-11.2	-23.3	30.	296.7	33.4	
450.0	21645.	-16.1	-28.1	35.	290.2	39.1	
400.0	24521.	-22.7	-33.5	37.	291.3	44.1	
350.0	27702.	-28.8	-39.8	34.	286.0	51.9	
300.0	31250.	-37.7	-46.9	37.	293.1	60.1	
250.0	35293.	-47.8			287.9	66.3	
200.0	39997.	-58.3			296.0	96.2	
175.0	42715.	-64.3			295.5	114.1	
150.0	45768.	-69.8			294.8	112.3	
125.0	49339.	-69.2			294.7	78.2	

29 ** AT LEAST ONE ASSUMED RELATIVE HUMIDITY VALUE WAS USED IN THE INTERPOLATION.

STATION ALTITUDE 4126.59 FEET MSL
 25 APR. 79 1300 HRS MST
 ASCENSION NO. 199

MRJ MANDATORY LEVELS
 1150010199
 HOLLOYAN

GEODETIC COORDINATES
 32.88865 LAT DEG
 106.09965 LON DEG

GEOCENTRAL ALTITUDE DECAMETERS	DIRECTION DEG (TN)	WIND DATA		DEW PT DEP DEG C	TEMPERATURE		PRESSURE MILLIBARS
		SPEED MPS	N-S MPS		AIR DEG C		
1504.	295.	40.	-17.	99	-69.2	1.250+2	
1395.	295.	56.	-24.	99	-69.8	1.500+2	
1302.	295.	59.	-25.	99	-64.3	1.750+2	
1219.	297.	49.	-22.	99	-58.3	2.000+2	
1070.	288.	34.	-10.	99	-47.8	2.500+2	
953.	293.	31.	-12.	09	-37.7	3.000+2	
844.	269.	27.	-9.	11	-28.8	3.500+2	
747.	291.	23.	-8.	11	-22.7	4.000+2	
660.	290.	20.	-7.	12	-16.1	4.500+2	
580.	297.	17.	-8.	12	-11.2	5.000+2	
506.	277.	16.	-2.	12	-5.7	5.500+2	
437.	267.	18.	1.	13	-0.6	6.000+2	
372.	295.	14.	-6.	12	2.1	6.500+2	
312.	316.	8.	-6.	14	6.8	7.000+2	
255.	328.	6.	-5.	17	12.1	7.500+2	
200.	323.	5.	-4.	20	17.1	8.000+2	
148.	287.	4.	-1.	23	22.0	8.500+2	