

AD-A072 216

NAVY UNDERWATER SOUND LAB NEW LONDON CT

F/G 20/1

NUMERICAL RESULTS FOR MUTUAL RADIATION IMPEDANCE COEFFICIENTS B--ETC(U)

MAR 65 D T PORTER, B F COLE

UNCLASSIFIED

USL-TM-960-17-65

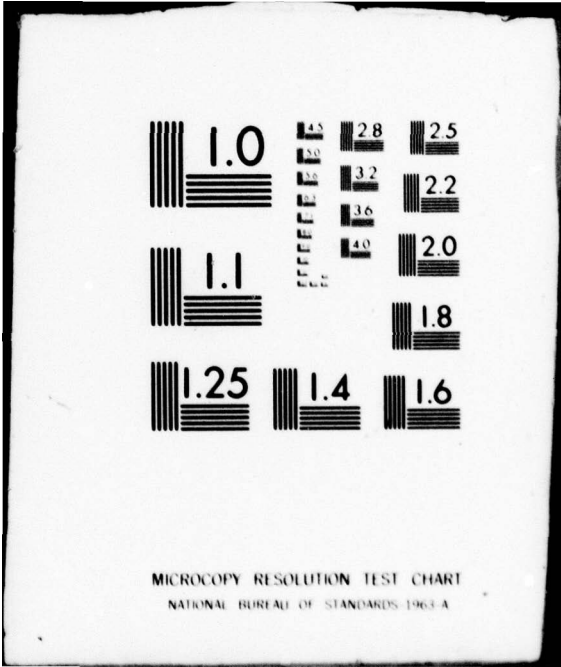
NL

| OF |

AD
A072-16



END
DATE
FILMED
9-79
DDC



MICROCOPY RESOLUTION TEST CHART
NATIONAL BUREAU OF STANDARDS-1963-A

LEVEL #

E. ARASE (HUDSON LABS)

COPY NO. 34

USL Tech. Memo.

1-452-00-00

S-F001 03 13 11213

COLUMBIA UNIVERSITY

HUDSON LABORATORIES

CONTRACT KONT-266(84)

U. S. Navy Underwater Sound Laboratory
Fort Trumbull, New London, Connecticut

6 NUMERICAL RESULTS FOR MUTUAL RADIATION IMPEDANCE COEFFICIENTS
BETWEEN CIRCULAR PISTONS IN AN INFINITE RIGID PLANE

10 David T. Porter and Bernard F. Cole

USL Technical Memorandum No. 960-17-65

12 35 P1

11 10 March 1965

DDC
AUG 6 1979

In reference (a), Pritchard derived an equation for the mutual radiation impedance between two circular pistons in an infinite rigid baffle. This memorandum presents computer results for mutual impedance coefficients for various ka's, and discussed the difficulties involved in obtaining accurate results.

9 Technical memo

Pritchard's equation for circular pistons of radius "a", and center-to-center spacing "d" is

16 F00103 17 SF0010313

$$\frac{Z_{12}}{\rho c \pi a^2} = \sum_{p=0}^{\infty} \sigma_p(ka) \left(\frac{a}{d}\right)^p h_p^{(2)}(kd)$$

where

$$\sigma_p(ka) = \frac{2\Gamma(p+1/2)}{\sqrt{\pi}} \sum_{n=0}^p \frac{J_{n+1}(ka) J_{p-n+1}(ka)}{n!(p-n)!} \quad (2)$$

and where $h_p^{(2)}(kd)$ denotes the spherical Hankel Function of the second kind,

$$h_p^{(2)}(kd) \equiv j_p(kd) - i\pi_p(kd) \quad (3)$$

Pritchard used Hankel Functions of the second kind, because he used a time dependence of $e^{-i\omega t}$, which will result in the circular pistons having positive self reactances (X_{11}).

A072216

DDC FILE COPY

DISTRIBUTION STATEMENT A
Approved for public release
Distribution Unlimited

79 08 03 130
78 08 07 383
254 200

MAR 31 1965

UNCLASSIFIED

SECURITY CLASSIFICATION OF THIS PAGE (When Data Entered)

REPORT DOCUMENTATION PAGE		READ INSTRUCTIONS BEFORE COMPLETING FORM
1. REPORT NUMBER	2. GOVT ACCESSION NO. 960-17-65	3. RECIPIENT'S CATALOG NUMBER
4. TITLE (and Subtitle) NUMERICAL RESULTS FOR MUTUAL RADIATION IMPEDANCE COEFFICIENTS BETWEEN CIRCULAR PISTONS IN AN INFINITE RIGID PLANE		5. TYPE OF REPORT & PERIOD COVERED Tech Memo
		6. PERFORMING ORG. REPORT NUMBER
7. AUTHOR(s) Porter, David T. and Cole, Bernard F.		8. CONTRACT OR GRANT NUMBER(s) None-266(84)
9. PERFORMING ORGANIZATION NAME AND ADDRESS Naval Underwater Systems Center New London, CT		10. PROGRAM ELEMENT, PROJECT, TASK AREA & WORK UNIT NUMBERS
11. CONTROLLING OFFICE NAME AND ADDRESS Office of Naval Research, Code 220 800 North Quincy St. Arlington, VA 22217		12. REPORT DATE 10 MAY 65
		13. NUMBER OF PAGES
14. MONITORING AGENCY NAME & ADDRESS (if different from Controlling Office)		15. SECURITY CLASS. (of this report) UNCLASSIFIED
		15a. DECLASSIFICATION/DOWNGRADING SCHEDULE
16. DISTRIBUTION STATEMENT (of this Report) Approved for public release; distribution unlimited.		
17. DISTRIBUTION STATEMENT (of the abstract entered in Block 20, if different from Report)		
18. SUPPLEMENTARY NOTES		
19. KEY WORDS (Continue on reverse side if necessary and identify by block number)		
20. ABSTRACT (Continue on reverse side if necessary and identify by block number)		

For $d/a > 3$, equation (1) converges rapidly. The example done out by Pritchard in reference (a) shows that for $ka = 1$, and $kd = 3$, four place accuracy can be obtained by taking four terms in the "p" summation for R_{12} , and six terms for X_{12} . However, as d/a becomes closer to 2, which corresponds to the pistons touching, the number of terms needed increases rapidly, and hand computations are not practical. In particular, for $d/a = 2$, the convergence of X_{12} is very slow (although R_{12} still converges rapidly). Also, increasing ka further slows down the convergence for $d/a = 2$. For $ka \leq 1.58$, and $d = 2a$, three place accuracy can be obtained for X_{12} by using 28 terms or more in the "p" summation. However, other limitations often prevented us from taking 28 terms, such as the generation in equation (1) of numbers greater in magnitude than 10^{38} , which led to overflow problems.

The cylindrical Bessel Functions, $J_n(ka)$, were generated by reverse recursion, as described in reference (b), to avoid roundoff difficulties. The spherical Bessel Functions, $j_p(kd)$, were usually generated by reverse recursion, but for large kd had to be generated by forward recursion. The spherical Neuman Functions, $n_p(kd)$ were always generated by forward recursion.

When $d \gg a$, equation (1) may be approximated by taking just the $p = 0$ term.

$$\frac{Z_{12}}{\rho c \pi a^2} \rightarrow 2 J_1^2(ka) \frac{j_0^2(kd)}{kd} \quad (4)$$

so that

$$\frac{R_{12}}{\rho c \pi a^2} \rightarrow \frac{2 J_1^2(ka) \sin kd}{kd} \quad (5)$$

and

$$\frac{X_{12}}{\rho c \pi a^2} \rightarrow \frac{2 J_1^2(ka) \cos kd}{kd} \quad (6)$$

Of course when ka approaches 3.832, the first zero of $J_1(ka)$, equations 4, 5 and 6 no longer hold. However, pistons with ka this large are rarely encountered in sonar arrays.

Reference (c) also contains results (in graphical form) for Pritchard's equation. These results are generally in good agreement with the results given in this report for $d/a > 3$, but reference (c) used only a small number of terms in the "p" summation, so that for $d/a < 3$, the results differ from those presented here. Also, reference (c) contains much less data than is

79 08 03 130

~~78 08 07 383~~

given here. The results in reference (c) were also for an $e^{-i\omega t}$ time dependence, Hankel Functions of the second kind, and positive self reactances.

The tables given in this report are for $ka = 1.58, 1.5, 1.4, 1.3, 1.2, 1.0, 0.9, 0.8, 0.7, 0.6, 0.5, 0.4, 0.3, 0.2$ and 0.1 . For each ka , $R_{12}/\rho c A$ (RESIJ) and $X_{12}/\rho c A$ (REACIJ) are given for kd from $2ka$ to 20.0 , in steps of 0.1 . For each ka , the number of terms used in the "p" summation is given by JMAX. MSTAR concerns the reverse recursion of the Bessel Functions.

The tables presented here are for an $e^{+i\omega t}$ time dependence, which was obtained by using Hankel Functions of the first kind, and results in mutual reactances corresponding to negative self reactances. If one wishes to use these tables and is using the $e^{-i\omega t}$ convention in his problem, he must change the signs of the X_{12} given here, and use positive self reactances. If one is using the $e^{+i\omega t}$ convention, the tables given here may be used directly, but negative self reactances must be used.

David T. Porter

DAVID T. PORTER
Mathematician

Bernard F. Cole

BERNARD F. COLE
Mathematician

REFERENCES

- (a) R. L. Pritchard, Journal of the Acoustical Society of America, Vol. 32, 730-737 (1960).
- (b) J. B. Randels and K. F. Reeves, "Communications of the Association for Computing Machinery", May 1958, page 3.
- (3) E. L. Barrett, "Mutual Radiation Impedance Coefficients for Identical Circular Pistons in a Stiff Infinite Plane Baffle", USL Tech. Memo. No. 1150-39-58, 23 July 1958.

APPROPRIATE UNIT	
APPROPRIATE UNIT	<input checked="" type="checkbox"/>
DDC TAB	<input type="checkbox"/>
Unannounced	<input type="checkbox"/>
Justification	<input type="checkbox"/>
By _____	
Distribution/	
Availability Codes	
Dist	Avail and/or special
A	

KA= 0.100000 JMAX= 9 MSTAR= 5

KD	RFSIJ	RFACIJ	KD	RFSIJ	RFACIJ
0.300000	0.004917	-0.016414	0.200000	0.004958	-0.026999
0.500000	0.004786	-0.008869	0.400000	0.004860	-0.011706
0.700000	0.004594	-0.005494	0.600000	0.004698	-0.006929
0.900000	0.004345	-0.003468	0.800000	0.004476	-0.004375
1.100000	0.004045	-0.002070	1.000000	0.004201	-0.002712
1.300000	0.003700	-0.001035	1.200000	0.003877	-0.001517
1.500000	0.003320	-0.000241	1.400000	0.003514	-0.000613
1.700000	0.002912	0.000374	1.600000	0.003119	0.000086
1.900000	0.002487	0.000846	1.800000	0.002701	0.000626
2.100000	0.002053	0.001197	2.000000	0.002270	0.001036
2.300000	0.001619	0.001444	2.200000	0.001835	0.001333
2.500000	0.001196	0.001598	2.400000	0.001406	0.001532
2.700000	0.000791	0.001670	2.600000	0.000991	0.001643
2.900000	0.000413	0.001670	2.800000	0.000598	0.001678
3.100000	0.000068	0.001608	3.000000	0.000236	0.001646
3.300000	-0.000237	0.001493	3.200000	-0.000090	0.001556
3.500000	-0.000499	0.001335	3.400000	-0.000374	0.001419
3.700000	-0.000714	0.001144	3.600000	-0.000612	0.001243
3.900000	-0.000879	0.000929	3.800000	-0.000803	0.001039
4.100000	-0.000995	0.000700	4.000000	-0.000943	0.000816
4.300000	-0.001062	0.000466	4.200000	-0.001035	0.000583
4.500000	-0.001083	0.000234	4.400000	-0.001079	0.000349
4.700000	-0.001061	0.000014	4.600000	-0.001077	0.000122
4.900000	-0.001000	-0.000189	4.800000	-0.001035	-0.000090
5.100000	-0.000906	-0.000369	5.000000	-0.000957	-0.000282
5.300000	-0.000783	-0.000521	5.200000	-0.000848	-0.000449
5.500000	-0.000640	-0.000642	5.400000	-0.000714	-0.000586
5.700000	-0.000482	-0.000730	5.600000	-0.000562	-0.000691
5.900000	-0.000316	-0.000784	5.800000	-0.000400	-0.000761
6.100000	-0.000149	-0.000804	6.000000	-0.000232	-0.000799
6.300000	0.000013	-0.000792	6.200000	-0.000067	-0.000802
6.500000	0.000165	-0.000749	6.400000	0.000091	-0.000774
6.700000	0.000302	-0.000681	6.600000	0.000236	-0.000718
6.900000	0.000420	-0.000590	6.800000	0.000363	-0.000638
7.100000	0.000494	-0.000481	7.000000	0.000472	-0.000537
7.300000	0.000579	-0.000360	7.200000	0.000546	-0.000422
7.500000	0.000623	-0.000231	7.400000	0.000604	-0.000296
7.700000	0.000639	-0.000100	7.600000	0.000634	-0.000165
7.900000	0.000630	0.000029	7.800000	0.000638	-0.000035
8.100000	0.000597	0.000150	8.000000	0.000616	0.000091
8.300000	0.000542	0.000259	8.200000	0.000572	0.000206
8.500000	0.000468	0.000353	8.400000	0.000507	0.000308
8.700000	0.000380	0.000429	8.600000	0.000426	0.000394
8.900000	0.000281	0.000485	8.800000	0.000331	0.000460
9.100000	0.000175	0.000519	9.000000	0.000228	0.000505
9.300000	0.000067	0.000532	9.200000	0.000121	0.000523
9.500000	-0.000039	0.000524	9.400000	0.000013	0.000530
9.700000	-0.000140	0.000495	9.600000	-0.000091	0.000512
9.900000	-0.000230	0.000448	9.800000	-0.000186	0.000474
			10.000000	-0.000271	0.000419

USL Tech. Memo.
No. 960-17-65

THIS PAGE IS BEST QUALITY PRACTICABLE
FROM COPY FURNISHED TO DDC

10.100000-0.000309	0.000386	10.200000-0.000342	0.000349		
10.300000-0.000372	0.000310	10.400000-0.000397	0.000269		
10.500000-0.000418	0.000226	10.600000-0.000434	0.000181		
10.700000-0.000446	0.000136	10.800000-0.000453	0.000090		
10.900000-0.000455	0.000044	11.000000-0.000453	0.000002		
11.100000-0.000447	0.000047	11.200000-0.000436	0.000090		
11.300000-0.000421	0.000132	11.400000-0.000402	0.000172		
11.500000-0.000380	0.000210	11.600000-0.000354	0.000244		
11.700000-0.000325	0.000276	11.800000-0.000293	0.000304		
11.900000-0.000259	0.000329	12.000000-0.000223	0.000351		
12.100000-0.000185	0.000368	12.200000-0.000146	0.000382		
12.300000-0.000107	0.000391	12.400000-0.000067	0.000397		
12.500000-0.000026	0.000398	12.600000	0.000013-0.000396		
12.700000	0.000052-0.000389	12.800000	0.000090-0.000370		
12.900000	0.000127-0.000365	13.000000	0.000161-0.000348		
13.100000	0.000194-0.000328	13.200000	0.000224-0.000305		
13.300000	0.000251-0.000279	13.400000	0.000276-0.000250		
13.500000	0.000297-0.000220	13.600000	0.000315-0.000188		
13.700000	0.000330-0.000154	13.800000	0.000341-0.000120		
13.900000	0.000349-0.000084	14.000000	0.000353-0.000049		
14.100000	0.000353-0.000013	14.200000	0.000351	0.000022	
14.300000	0.000344	0.000056	14.400000	0.000334	0.000090
14.500000	0.000322	0.000122	14.600000	0.000306	0.000152
14.700000	0.000287	0.000181	14.800000	0.000266	0.000207
14.900000	0.000242	0.000231	15.000000	0.000216	0.000253
15.100000	0.000189	0.000271	15.200000	0.000160	0.000287
15.300000	0.000129	0.000299	15.400000	0.000098	0.000309
15.500000	0.000066	0.000315	15.600000	0.000034	0.000318
15.700000	0.000003	0.000318	15.800000-0.000029	0.000314	
15.900000-0.000060	0.000308	16.000000-0.000090	0.000299		
16.100000-0.000118	0.000286	16.200000-0.000145	0.000271		
16.300000-0.000171	0.000254	16.400000-0.000194	0.000234		
16.500000-0.000215	0.000212	16.600000-0.000234	0.000189		
16.700000-0.000250	0.000163	16.800000-0.000264	0.000137		
16.900000-0.000274	0.000109	17.000000-0.000282	0.000081		
17.100000-0.000287	0.000052	17.200000-0.000289	0.000023		
17.300000-0.000288	0.000006	17.400000-0.000285	0.000035		
17.500000-0.000278	0.000062	17.600000-0.000269	0.000089		
17.700000-0.000257	0.000115	17.800000-0.000243	0.000139		
17.900000-0.000227	0.000162	18.000000-0.000208	0.000183		
18.100000-0.000188	0.000202	18.200000-0.000166	0.000218		
18.300000-0.000142	0.000232	18.400000-0.000118	0.000244		
18.500000-0.000092	0.000253	18.600000-0.000066	0.000260		
18.700000-0.000040	0.000264	18.800000-0.000013	0.000265		
18.900000	0.000013-0.000264	19.000000	0.000039-0.000260		
19.100000	0.000063-0.000253	19.200000	0.000089-0.000244		
19.300000	0.000113-0.000233	19.400000	0.000134-0.000219		
19.500000	0.000155-0.000204	19.600000	0.000174-0.000186		
19.700000	0.000190-0.000167	19.800000	0.000205-0.000146		
19.900000	0.000217-0.000125	20.000000	0.000228-0.000102		

*KA= 0.200000 JMAX= 4 MSTAR= 6

KN	RESLJ	REACTJ	KN	RESLJ	REACTJ
0.500000	0.019051	-0.036832	0.400000	0.019342	-0.049949
0.700000	0.018286	-0.022392	0.600000	0.018698	-0.028424
0.900000	0.017295	-0.014053	0.800000	0.017817	-0.017764
1.100000	0.016101	-0.008385	1.000000	0.016722	-0.010982
1.300000	0.014732	-0.004214	1.200000	0.015437	-0.006153
1.500000	0.013220	-0.001027	1.400000	0.013992	-0.002518
1.700000	0.011599	0.001437	1.600000	0.012421	0.000284
1.900000	0.009907	0.003326	1.800000	0.010760	0.002447
2.100000	0.008180	0.004732	2.000000	0.009046	0.004085
2.300000	0.006457	0.005719	2.200000	0.007316	0.005274
2.500000	0.004773	0.006336	2.400000	0.005608	0.006071
2.700000	0.003163	0.006627	2.600000	0.003957	0.006520
2.900000	0.001658	0.006632	2.800000	0.002396	0.006663
3.100000	0.000287	0.006388	3.000000	0.000954	0.006538
3.300000	-0.000929	0.005933	3.200000	-0.000342	0.006184
3.500000	-0.001971	0.005308	3.400000	-0.001473	0.005640
3.700000	-0.002825	0.004550	3.600000	-0.002422	0.004943
3.900000	-0.003485	0.003697	3.800000	-0.003180	0.004133
4.100000	-0.003947	0.002787	4.000000	-0.003741	0.003247
4.300000	-0.004217	0.001856	4.200000	-0.004106	0.002322
4.500000	-0.004301	0.000938	4.400000	-0.004281	0.001394
4.700000	-0.004214	0.000061	4.600000	-0.004278	0.000492
4.900000	-0.003973	-0.000746	4.800000	-0.004112	-0.000353
5.100000	-0.003599	-0.001461	5.000000	-0.003801	-0.001116
5.300000	-0.003114	-0.002066	5.200000	-0.003369	-0.001778
5.500000	-0.002545	-0.002548	5.400000	-0.002839	-0.002323
5.700000	-0.001918	-0.002897	5.600000	-0.002237	-0.002739
5.900000	-0.001259	-0.003111	5.800000	-0.001591	-0.003021
6.100000	-0.000595	-0.003192	6.000000	-0.000926	-0.003168
6.300000	0.000053	-0.003143	6.200000	-0.000267	-0.003183
6.500000	0.000592	-0.002977	6.400000	0.000370	-0.003074
6.700000	0.001186	-0.002705	6.600000	0.000919	-0.002853
6.900000	0.001653	-0.002344	6.800000	0.001430	-0.002534
7.100000	0.002027	-0.001912	7.000000	0.001852	-0.002136
7.300000	0.002302	-0.001430	7.200000	0.002178	-0.001676
7.500000	0.002473	-0.000919	7.400000	0.002401	-0.001177
7.700000	0.002538	-0.000398	7.600000	0.002519	-0.000658
7.900000	0.002502	0.000112	7.800000	0.002533	-0.000140
8.100000	0.002370	0.000593	8.000000	0.002447	0.000357
8.300000	0.002151	0.001027	8.200000	0.002270	0.000816
8.500000	0.001860	0.001400	8.400000	0.002014	0.001222
8.700000	0.001509	0.001702	8.600000	0.001690	0.001561
8.900000	0.001115	0.001924	8.800000	0.001316	0.001824
9.100000	0.000694	0.002062	9.000000	0.000907	0.002004
9.300000	0.000265	0.002113	9.200000	0.000480	0.002098
9.500000	-0.000157	0.002079	9.400000	0.000052	0.002106
9.700000	-0.000555	0.001965	9.600000	-0.000360	0.002032
9.900000	-0.000915	0.001780	9.800000	-0.000741	0.001881
			10.000000	-0.001078	0.001663

10.100000-0.001226 0.001532	10.200000-0.001359 0.001388
10.300000-0.001476 0.001233	10.400000-0.001577 0.001070
10.500000-0.001660 0.000898	10.600000-0.001725 0.000721
10.700000-0.001771 0.000541	10.800000-0.001799 0.000358
10.900000-0.001809 0.000175	11.000000-0.001801-0.000006
11.100000-0.001775-0.000184	11.200000-0.001732-0.000357
11.300000-0.001673-0.000524	11.400000-0.001598-0.000682
11.500000-0.001508-0.000831	11.600000-0.001406-0.000969
11.700000-0.001291-0.001095	11.800000-0.001165-0.001208
11.900000-0.001029-0.001307	12.000000-0.000886-0.001392
12.100000-0.000736-0.001461	12.200000-0.000582-0.001515
12.300000-0.000424-0.001553	12.400000-0.000265-0.001573
12.500000-0.000105-0.001581	12.600000 0.000053-0.001571
12.700000 0.000208-0.001545	12.800000 0.000358-0.001505
12.900000 0.000503-0.001451	13.000000 0.000641-0.001383
13.100000 0.000770-0.001302	13.200000 0.000889-0.001210
13.300000 0.000998-0.001107	13.400000 0.001095-0.000994
13.500000 0.001180-0.000874	13.600000 0.001253-0.000746
13.700000 0.001311-0.000613	13.800000 0.001356-0.000476
13.900000 0.001387-0.000336	14.000000 0.001403-0.000194
14.100000 0.001405-0.000053	14.200000 0.001394 0.000087
14.300000 0.001369 0.000224	14.400000 0.001330 0.000356
14.500000 0.001279 0.000484	14.600000 0.001216 0.000605
14.700000 0.001141 0.000718	14.800000 0.001057 0.000823
14.900000 0.000962 0.000918	15.000000 0.000860 0.001002
15.100000 0.000751 0.001076	15.200000 0.000635 0.001138
15.300000 0.000515 0.001188	15.400000 0.000391 0.001225
15.500000 0.000264 0.001250	15.600000 0.000137 0.001262
15.700000 0.000010 0.001261	15.800000-0.000115 0.001248
15.900000-0.000238 0.001223	16.000000-0.000357 0.001185
16.100000-0.000471 0.001137	16.200000-0.000579 0.001078
16.300000-0.000680 0.001008	16.400000-0.000773 0.000930
16.500000-0.000858 0.000843	16.600000-0.000932 0.000749
16.700000-0.000997 0.000649	16.800000-0.001051 0.000544
16.900000-0.001094 0.000434	17.000000-0.001126 0.000321
17.100000-0.001147 0.000207	17.200000-0.001156 0.000091
17.300000-0.001154-0.000024	17.400000-0.001140-0.000137
17.500000-0.001116-0.000248	17.600000-0.001082-0.000355
17.700000-0.001039-0.000457	17.800000-0.000988-0.000553
17.900000-0.000935-0.000643	18.000000-0.000912-0.000726
18.100000-0.000831-0.000800	18.200000-0.000829-0.000866
18.300000-0.000851-0.000922	18.400000-0.000859-0.000969
18.500000-0.000861-0.001005	18.600000-0.000860-0.001031
18.700000-0.000856-0.001047	18.800000-0.000852-0.001052
18.900000 0.000852-0.001046	19.000000 0.000855-0.001030
19.100000 0.000855-0.001005	19.200000 0.000852-0.000969
19.300000 0.000844-0.000924	19.400000 0.000831-0.000870
19.500000 0.000812-0.000808	19.600000 0.000886-0.000739
19.700000 0.000753-0.000663	19.800000 0.000811-0.000582
19.900000 0.000860-0.000495	20.000000 0.000901-0.000404

KA= 0.300000

JMAX= 6

MSTAR= 8

KD	RESIJ	REACIJ	KD	RESIJ	REACIJ
			0.600000	0.041726	-0.067723
0.700000	0.040808	-0.052347	0.800000	0.039764	-0.041145
0.900000	0.038600	-0.032392	1.000000	0.037323	-0.025260
1.100000	0.035940	-0.019286	1.200000	0.034460	-0.014185
1.300000	0.032891	-0.009774	1.400000	0.031241	-0.005926
1.500000	0.029522	-0.002554	1.600000	0.027742	0.000409
1.700000	0.025911	0.003009	1.800000	0.024041	0.005285
1.900000	0.022140	0.007266	2.000000	0.020221	0.008975
2.100000	0.018293	0.010432	2.200000	0.016366	0.011655
2.300000	0.014452	0.012657	2.400000	0.012560	0.013452
2.500000	0.010699	0.014053	2.600000	0.008879	0.014471
2.700000	0.007110	0.014718	2.800000	0.005399	0.014804
2.900000	0.003755	0.014741	3.000000	0.002185	0.014539
3.100000	0.000696	0.014209	3.200000	-0.000707	0.013761
3.300000	-0.002017	0.013207	3.400000	-0.003229	0.012557
3.500000	-0.004341	0.011822	3.600000	-0.005348	0.011012
3.700000	-0.006249	0.010140	3.800000	-0.007040	0.009214
3.900000	-0.007722	0.008246	4.000000	-0.008295	0.007247
4.100000	-0.008758	0.006225	4.200000	-0.009114	0.005191
4.300000	-0.009364	0.004155	4.400000	-0.009510	0.003126
4.500000	-0.009557	0.002111	4.600000	-0.009509	0.001121
4.700000	-0.009369	0.000161	4.800000	-0.009143	-0.000760
4.900000	-0.008837	-0.001635	5.000000	-0.008457	-0.002460
5.100000	-0.008008	-0.003228	5.200000	-0.007498	-0.003935
5.300000	-0.006934	-0.004576	5.400000	-0.006323	-0.005149
5.500000	-0.005671	-0.005650	5.600000	-0.004988	-0.006078
5.700000	-0.004279	-0.006430	5.800000	-0.003553	-0.006708
5.900000	-0.002816	-0.006910	6.000000	-0.002076	-0.007037
6.100000	-0.001340	-0.007091	6.200000	-0.000614	-0.007074
6.300000	0.000075	-0.006987	6.400000	0.000776	-0.006834
6.500000	0.001433	-0.006619	6.600000	0.002055	-0.006345
6.700000	0.002639	-0.006016	6.800000	0.003179	-0.005638
6.900000	0.003672	-0.005216	7.000000	0.004115	-0.004754
7.100000	0.004505	-0.004258	7.200000	0.004839	-0.003734
7.300000	0.005117	-0.003188	7.400000	0.005336	-0.002625
7.500000	0.005497	-0.002051	7.600000	0.005600	-0.001472
7.700000	0.005644	-0.000893	7.800000	0.005632	-0.000321
7.900000	0.005564	0.000240	8.000000	0.005443	0.000785
8.100000	0.005271	0.001309	8.200000	0.005052	0.001806
8.300000	0.004787	0.002274	8.400000	0.004482	0.002709
8.500000	0.004139	0.003106	8.600000	0.003764	0.003463
8.700000	0.003359	0.003778	8.800000	0.002931	0.004043
8.900000	0.002483	0.004273	9.000000	0.002020	0.004450
9.100000	0.001548	0.004579	9.200000	0.001070	0.004661
9.300000	0.000591	0.004694	9.400000	0.000116	0.004680
9.500000	-0.000350	0.004620	9.600000	-0.000804	0.004516
9.700000	-0.001241	0.004369	9.800000	-0.001660	0.004182
9.900000	-0.002056	0.003957	10.000000	-0.002429	0.003698

10.100000-0.004725	0.005961	10.200000-0.005245	0.005405		
10.300000-0.005702	0.004806	10.400000-0.006095	0.004171		
10.500000-0.006419	0.003507	10.600000-0.006673	0.002820		
10.700000-0.005856	0.002119	10.800000-0.006968	0.001409		
10.900000-0.007009	0.000699	11.000000-0.006979	-0.000005		
11.100000-0.006881	-0.000697	11.200000-0.006716	-0.001360		
11.300000-0.006487	-0.002016	11.400000-0.006198	-0.002632		
11.500000-0.005852	-0.003210	11.600000-0.005454	-0.003747		
11.700000-0.005008	-0.004238	11.800000-0.004521	-0.004678		
11.900000-0.003996	-0.005064	12.000000-0.003441	-0.005394		
12.100000-0.002860	-0.005665	12.200000-0.002260	-0.005875		
12.300000-0.001648	-0.006024	12.400000-0.001029	-0.006110		
12.500000-0.000409	-0.006135	12.600000	0.000206-0.006098		
12.700000	0.000808-0.006001	12.800000	0.001394-0.005847		
12.900000	0.001957-0.005636	13.000000	0.002493-0.005374		
13.100000	0.002996-0.005061	13.200000	0.003462-0.004704		
13.300000	0.003887-0.004305	13.400000	0.004268-0.003869		
13.500000	0.004601-0.003401	13.600000	0.004884-0.002907		
13.700000	0.005116-0.002390	13.800000	0.005295-0.001858		
13.900000	0.005419-0.001315	14.000000	0.005489-0.000766		
14.100000	0.005506-0.000218	14.200000	0.005471	0.000325	
14.300000	0.005385	0.000856	14.400000	0.005254	0.001372
14.500000	0.005086	0.001868	14.600000	0.004900	0.002338
14.700000	0.004798	0.002778	14.800000	0.001080	0.003185
14.900000	0.003471	0.003555	15.000000	0.003211	0.003884
15.100000	0.002836	0.004171	15.200000	0.002414	0.004412
15.300000	0.001964	0.004606	15.400000	0.001494	0.004752
15.500000	0.001013	0.004850	15.600000	0.000526	0.004897
15.700000	0.000039	0.004896	15.800000	-0.000444	0.004845
15.900000	-0.000917	0.004748	16.000000	-0.001375	0.004604
16.100000	-0.001814	0.004417	16.200000	-0.002230	0.004187
16.300000	-0.002619	0.003920	16.400000	-0.002978	0.003616
16.500000	-0.003302	0.003280	16.600000	-0.003590	0.002916
16.700000	-0.003839	0.002527	16.800000	-0.004047	0.002117
16.900000	-0.004212	0.001692	17.000000	-0.004334	0.001254
17.100000	-0.004411	0.000810	17.200000	-0.004443	0.000362
17.300000	-0.004431	-0.000084	17.400000	-0.004375	-0.000524
17.500000	-0.004275	-0.000954	17.600000	-0.004135	-0.001369
17.700000	-0.003955	-0.001767	17.800000	-0.003737	-0.002142
17.900000	-0.003485	-0.002491	18.000000	-0.003201	-0.002812
18.100000	-0.002888	-0.003102	18.200000	-0.002550	-0.003357
18.300000	-0.002191	-0.003577	18.400000	-0.001813	-0.003758
18.500000	-0.001421	-0.003900	18.600000	-0.001019	-0.004002
18.700000	-0.000612	-0.004063	18.800000	-0.000202	-0.004083
18.900000	0.000205	-0.004062	19.000000	0.000606	-0.004071
19.100000	0.000996	-0.003901	19.200000	0.001373	-0.003763
19.300000	0.001732	-0.003589	19.400000	0.002071	-0.003381
19.500000	0.002385	-0.003142	19.600000	0.002672	-0.002874
19.700000	0.002930	-0.002580	19.800000	0.003157	-0.002263
19.900000	0.003349	-0.001927	20.000000	0.003507	-0.001575

KA= 0.400000 JMAX= 8 MSTAR= 10

KD	RFSIJ	RFACIJ	KD	RFSIJ	RFACIJ
0.900000	0.067850	-0.060027	0.800000	0.069891	-0.077274
1.100000	0.063187	-0.035472	1.000000	0.065611	-0.046535
1.300000	0.057840	-0.018153	1.200000	0.060591	-0.026149
1.500000	0.051933	-0.005164	1.400000	0.054948	-0.011218
1.700000	0.045602	0.004785	1.600000	0.048812	0.000139
1.900000	0.038989	0.012374	1.800000	0.042321	0.008844
2.100000	0.032241	0.018014	2.000000	0.035623	0.015418
2.300000	0.025504	0.021980	2.200000	0.028862	0.020192
2.500000	0.018919	0.024479	2.400000	0.022184	0.023401
2.700000	0.012622	0.025686	2.600000	0.015727	0.025234
2.900000	0.006733	0.025761	2.800000	0.009619	0.025855
3.100000	0.001362	0.024856	3.000000	0.003977	0.025421
3.300000	-0.003402	0.023124	3.200000	-0.001109	0.024084
3.500000	-0.007487	0.020717	3.400000	-0.005533	0.021996
3.700000	-0.010842	0.017787	3.600000	-0.009258	0.019308
3.900000	-0.013438	0.014483	3.800000	-0.012336	0.016172
4.100000	-0.015267	0.010952	4.000000	-0.014448	0.012737
4.300000	-0.016341	0.007333	4.200000	-0.015896	0.009145
4.500000	-0.016694	0.003757	4.400000	-0.016605	0.005532
4.700000	-0.016377	0.000344	4.600000	-0.016615	0.002024
4.900000	-0.015458	-0.002803	4.800000	-0.015988	-0.001269
5.100000	-0.014017	-0.005593	5.000000	-0.014797	-0.004247
5.300000	-0.012146	-0.007958	5.200000	-0.013129	-0.006833
5.500000	-0.009944	-0.009842	5.400000	-0.011080	-0.008962
5.700000	-0.007514	-0.011215	5.600000	-0.008751	-0.010594
5.900000	-0.004958	-0.012061	5.800000	-0.006245	-0.011704
6.100000	-0.002379	-0.012386	6.000000	-0.003666	-0.012288
6.300000	0.000127	-0.012210	6.200000	-0.001111	-0.012358
6.500000	0.002474	-0.011573	6.400000	0.001325	-0.011946
6.700000	0.004585	-0.010525	6.600000	0.003563	-0.011097
6.900000	0.006395	-0.009131	6.800000	0.005531	-0.009867
7.100000	0.007854	-0.007460	7.000000	0.007171	-0.008325
7.300000	0.008929	-0.005592	7.200000	0.008441	-0.006546
7.500000	0.009599	-0.003606	7.400000	0.009315	-0.004609
7.700000	0.009861	-0.001584	7.600000	0.009781	-0.002594
7.900000	0.009726	0.000398	7.800000	0.009842	-0.000583
8.100000	0.009219	0.002266	8.000000	0.009517	0.001351
8.300000	0.008377	0.003956	8.200000	0.008837	0.003137
8.500000	0.007248	0.005412	8.400000	0.007845	0.004716
8.700000	0.005889	0.006589	8.600000	0.006594	0.006038
8.900000	0.004360	0.007457	8.800000	0.005141	0.007064
9.100000	0.002727	0.007996	9.000000	0.003552	0.007768
9.300000	0.001053	0.008199	9.200000	0.001892	0.008139
9.500000	-0.001833	0.008073	9.400000	0.000212	0.008176
9.700000	-0.002104	0.007637	9.600000	-0.001329	0.007892
9.900000	-0.003513	0.006920	9.800000	-0.002831	0.007311
			10.000000	-0.004146	0.006468

KA= 0.500000 JMAX= 10

MSTAR= 12

KD RESIJ REACIJ KD RESIJ REACIJ

1.100000	0.097328	-0.058382	1.000000	0.101048	-0.077201
1.300000	0.089121	-0.030101	1.200000	0.093344	-0.043033
1.500000	0.080054	-0.009388	1.400000	0.084682	-0.019006
1.700000	0.070335	0.006314	1.600000	0.075263	-0.001005
1.900000	0.060183	0.018236	1.800000	0.065299	0.012696
2.100000	0.049821	0.027079	2.000000	0.055014	0.023009
2.300000	0.039474	0.033302	2.200000	0.044632	0.030495
2.500000	0.029360	0.037243	2.400000	0.034375	0.035540
2.700000	0.019684	0.039181	2.600000	0.024455	0.038446
2.900000	0.010634	0.039365	2.800000	0.015070	0.039477
3.100000	0.002374	0.038036	3.000000	0.006396	0.038875
3.300000	-0.004955	0.035428	3.200000	-0.001414	0.036877
3.500000	-0.011244	0.031777	3.400000	-0.008235	0.033718
3.700000	-0.016415	0.027315	3.600000	-0.013973	0.029633
3.900000	-0.020422	0.022275	3.800000	-0.018566	0.024654
4.100000	-0.023253	0.016882	4.000000	-0.021984	0.019609
4.300000	-0.024928	0.011349	4.200000	-0.024233	0.014120
4.500000	-0.025496	0.005877	4.400000	-0.025346	0.008593
4.700000	-0.025036	0.000649	4.600000	-0.025389	0.003222
4.900000	-0.023652	-0.004173	4.800000	-0.024453	-0.001821
5.100000	-0.021467	-0.008453	5.000000	-0.022651	-0.006388
5.300000	-0.018620	-0.012083	5.200000	-0.020116	-0.010355
5.500000	-0.015263	-0.014980	5.400000	-0.016995	-0.013627
5.700000	-0.011553	-0.017095	5.600000	-0.013442	-0.016138
5.900000	-0.007650	-0.018404	5.800000	-0.009616	-0.017850
6.100000	-0.003708	-0.018915	6.000000	-0.005675	-0.018758
6.300000	0.000126	-0.018661	6.200000	-0.001769	-0.018881
6.500000	0.003718	-0.017699	6.400000	0.001960	-0.018264
6.700000	0.006951	-0.016109	6.600000	0.005386	-0.016977
6.900000	0.009725	-0.013985	6.800000	0.008401	-0.015107
7.100000	0.011965	-0.011439	7.000000	0.010916	-0.012758
7.300000	0.013617	-0.008588	7.200000	0.012867	-0.010044
7.500000	0.014651	-0.005555	7.400000	0.014212	-0.007086
7.700000	0.015060	-0.002465	7.600000	0.014933	-0.004010
7.900000	0.014863	0.000565	7.800000	0.015036	-0.000935
8.100000	0.014096	0.003423	8.000000	0.014547	0.002022
8.300000	0.012817	0.006009	8.200000	0.013516	0.004755
8.500000	0.011098	0.008239	8.400000	0.012007	0.007173
8.700000	0.009026	0.010044	8.600000	0.010100	0.009198
8.900000	0.006694	0.011376	8.800000	0.007886	0.010772
9.100000	0.004204	0.012205	9.000000	0.005463	0.011855
9.300000	0.001656	0.012522	9.200000	0.002931	0.012428
9.500000	-0.000843	0.012336	9.400000	0.000384	0.012490
9.700000	-0.003213	0.011675	9.600000	-0.002051	0.012062
9.900000	-0.005360	0.010584	9.800000	-0.004319	0.011180
			10.000000	-0.006326	0.009896

THIS PAGE IS BEST QUALITY FRAGMENTABLE
FROM COPY FURNISHED TO DDO

10.100000-0.002786 0.003407	10.200000-0.003175 0.003088
10.300000-0.002545 0.002745	10.400000-0.003379 0.002381
10.500000-0.003616 0.002001	10.600000-0.003781 0.001608
10.700000-0.003895 0.001206	10.800000-0.003965 0.000800
10.900000-0.003992 0.000394	11.000000-0.003978-0.000009
11.100000-0.003923-0.000405	11.200000-0.003831-0.000790
11.300000-0.003701-0.001160	11.400000-0.003536-0.001512
11.500000-0.003339-0.001843	11.600000-0.003113-0.002150
11.700000-0.002858-0.002430	11.800000-0.002580-0.002682
11.900000-0.002281-0.002902	12.000000-0.001964-0.003091
12.100000-0.001632-0.003245	12.200000-0.001290-0.003365
12.300000-0.000940-0.003450	12.400000-0.000587-0.003490
12.500000-0.000233-0.003512	12.600000 0.000117-0.003491
12.700000 0.000461-0.003435	12.800000 0.000795-0.003346
12.900000 0.001116-0.003225	13.000000 0.001421-0.003074
13.100000 0.001707-0.002895	13.200000 0.001972-0.002690
13.300000 0.002214-0.002461	13.400000 0.002430-0.002211
13.500000 0.002618-0.001943	13.600000 0.002778-0.001660
13.700000 0.002908-0.001365	13.800000 0.003008-0.001060
13.900000 0.003076-0.000749	14.000000 0.003112-0.000435
14.100000 0.003118-0.000121	14.200000 0.003092 0.000190
14.300000 0.003036 0.000494	14.400000 0.002950 0.000789
14.500000 0.002837 0.001073	14.600000 0.002696 0.001341
14.700000 0.002531 0.001593	14.800000 0.002343 0.001826
14.900000 0.002135 0.002037	15.000000 0.001908 0.002226
15.100000 0.001665 0.002389	15.200000 0.001408 0.002527
15.300000 0.001141 0.002638	15.400000 0.000866 0.002722
15.500000 0.000586 0.002777	15.600000 0.000304 0.002804
15.700000 0.000022 0.002802	15.800000-0.000256 0.002773
15.900000-0.000528 0.002717	16.000000-0.000792 0.002635
16.100000-0.001045 0.002527	16.200000-0.001284 0.002396
16.300000-0.001507 0.002242	16.400000-0.001713 0.002068
16.500000-0.001899 0.001876	16.600000-0.002064 0.001667
16.700000-0.002207 0.001444	16.800000-0.002326 0.001210
16.900000-0.002420 0.000966	17.000000-0.002490 0.000715
17.100000-0.002534 0.000461	17.200000-0.002552 0.000205
17.300000-0.002544-0.000051	17.400000-0.002512-0.000303
17.500000-0.002455-0.000549	17.600000-0.002374-0.000786
17.700000-0.002270-0.001014	17.800000-0.002145-0.001228
17.900000-0.002000-0.001428	18.000000-0.001837-0.001612
18.100000-0.001658-0.001777	18.200000-0.001464-0.001923
18.300000-0.001257-0.002049	18.400000-0.001040-0.002152
18.500000-0.000815-0.002234	18.600000-0.000585-0.002292
18.700000-0.000351-0.002326	18.800000-0.000116-0.002337
18.900000 0.000118-0.002325	19.000000 0.000347-0.002290
19.100000 0.000572-0.002232	19.200000 0.000788-0.002159
19.300000 0.000994-0.002054	19.400000 0.001188-0.001934
19.500000 0.001368-0.001797	19.600000 0.001533-0.001644
19.700000 0.001681-0.001475	19.800000 0.001810-0.001294
19.900000 0.001921-0.001101	20.000000 0.002011-0.000900

10.100000-0.007211	0.009123	10.200000-0.008007	0.008275		
10.300000-0.008708	0.007361	10.400000-0.009309	0.006392		
10.500000-0.009806	0.005379	10.600000-0.010197	0.004331		
10.700000-0.010479	0.003259	10.800000-0.010653	0.002176		
10.900000-0.010717	0.001090	11.000000-0.010674	0.000014		
11.100000-0.010526	-0.001043	11.200000-0.010276	-0.002071		
11.300000-0.009928	-0.003060	11.400000-0.009488	-0.004001		
11.500000-0.008962	-0.004886	11.600000-0.008355	-0.005708		
11.700000-0.007676	-0.006459	11.800000-0.006932	-0.007139		
11.900000-0.006131	-0.007725	12.000000-0.005283	-0.008231		
12.100000-0.004395	-0.008646	12.200000-0.003477	-0.008969		
12.300000-0.002538	-0.009198	12.400000-0.001588	-0.009332		
12.500000-0.000633	-0.009371	12.600000	0.000320-0.009316		
12.700000	0.001270-0.009170	12.800000	0.002248-0.008935		
12.900000	0.004408-0.008616	13.000000	0.003502-0.008215		
13.100000	0.004397-0.007740	13.200000	0.005146-0.007194		
13.300000	0.005812-0.006586	13.400000	0.006402-0.005921		
13.500000	0.006916-0.005207	13.600000	0.007351-0.004453		
13.700000	0.007705-0.003665	13.800000	0.007977-0.002852		
13.900000	0.008164-0.002022	14.000000	0.008267-0.001184		
14.100000	0.008285-0.000347	14.200000	0.008221	0.000482	
14.300000	0.008075	0.001295	14.400000	0.007850	0.002084
14.500000	0.007551	0.002841	14.600000	0.007180	0.003560
14.700000	0.006742	0.004233	14.800000	0.006243	0.004855
14.900000	0.005688	0.005421	15.000000	0.005084	0.005925
15.100000	0.004437	0.006364	15.200000	0.003755	0.006734
15.300000	0.003043	0.007032	15.400000	0.002310	0.007256
15.500000	0.001564	0.007406	15.600000	0.000811	0.007480
15.700000	0.000060	0.007478	15.800000-0.000683	0.007403	
15.900000-0.001410	0.007254	16.000000-0.002114	0.007036		
16.100000-0.002789	0.006750	16.200000-0.003428	0.006401		
16.300000-0.004025	0.005993	16.400000-0.004575	0.005530		
16.500000-0.005073	0.005018	16.600000-0.005515	0.004462		
16.700000-0.005898	0.003868	16.800000-0.006217	0.003243		
16.900000-0.006470	0.002593	17.000000-0.006657	0.001925		
17.100000-0.006775	0.001246	17.200000-0.006825	0.000562		
17.300000-0.006807	-0.000119	17.400000-0.006721	-0.000792		
17.500000-0.006569	-0.001449	17.600000-0.006354	-0.002084		
17.700000-0.006078	-0.002691	17.800000-0.005745	-0.003264		
17.900000-0.005359	-0.003799	18.000000-0.004923	-0.004290		
18.100000-0.004443	-0.004733	18.200000-0.003924	-0.005124		
18.300000-0.003371	-0.005460	18.400000-0.002791	-0.005737		
18.500000-0.002189	-0.005955	18.600000-0.001571	-0.006111		
18.700000-0.000943	-0.006205	18.800000-0.000312	-0.006236		
18.900000	0.000316-0.006205	19.000000	0.000936-0.006113		
19.100000	0.001541-0.005960	19.200000	0.002127-0.005750		
19.300000	0.002688-0.005485	19.400000	0.003220-0.005168		
19.500000	0.003719-0.004803	19.600000	0.004183-0.004394		
19.700000	0.004614-0.003946	19.800000	0.005018-0.003462		
19.900000	0.005423-0.002950	20.000000	0.005978-0.002412		

KA= 0.60000 JMAX= 10 MSTAR= 12

1.100000	0.137724	-0.091918	1.000000	0.142966	-0.126638
1.300000	0.126163	-0.046996	1.200000	0.132112	-0.066960
1.500000	0.113388	-0.016039	1.400000	0.119909	-0.030302
1.700000	0.099693	0.006974	1.600000	0.106637	-0.003719
1.900000	0.085384	0.024301	1.800000	0.092595	0.016260
2.100000	0.070778	0.037113	2.000000	0.078099	0.031279
2.300000	0.056191	0.046134	2.200000	0.063463	0.042062
2.500000	0.041928	0.051879	2.400000	0.049000	0.049388
2.700000	0.028278	0.054762	2.600000	0.035009	0.053655
2.900000	0.015505	0.055147	2.800000	0.021766	0.055244
3.100000	0.003843	0.053379	3.000000	0.009522	0.054511
3.300000	-0.006513	0.049794	3.200000	-0.001509	0.051793
3.500000	-0.015407	0.044726	3.400000	-0.011151	0.047425
3.700000	-0.022730	0.038506	3.600000	-0.019270	0.041739
3.900000	-0.028416	0.031461	3.800000	-0.025779	0.035066
4.100000	-0.032447	0.023907	4.000000	-0.030637	0.027728
4.300000	-0.034851	0.016149	4.200000	-0.033849	0.020036
4.500000	-0.035697	0.008469	4.400000	-0.035463	0.012283
4.700000	-0.035096	0.001125	4.600000	-0.035570	0.004740
4.900000	-0.033192	-0.005656	4.800000	-0.034297	-0.002348
5.100000	-0.030158	-0.011681	5.000000	-0.031805	-0.008773
5.300000	-0.026190	-0.016795	5.200000	-0.028278	-0.014360
5.500000	-0.021501	-0.020885	5.400000	-0.023922	-0.018974
5.700000	-0.016312	-0.023877	5.600000	-0.018955	-0.022521
5.900000	-0.010846	-0.025741	5.800000	-0.013600	-0.024951
6.100000	-0.005321	-0.026483	6.000000	-0.008078	-0.026250
6.300000	0.000058	-0.026151	6.200000	-0.002601	-0.026447
6.500000	0.005101	-0.024824	6.400000	0.002632	-0.025606
6.700000	0.009643	-0.022613	6.600000	0.007444	-0.023821
6.900000	0.013546	-0.019652	6.800000	0.011682	-0.021217
7.100000	0.016701	-0.016094	7.000000	0.015222	-0.017938
7.300000	0.019032	-0.012107	7.200000	0.017973	-0.014144
7.500000	0.020497	-0.007861	7.400000	0.019874	-0.010005
7.700000	0.021087	-0.003531	7.600000	0.020901	-0.005696
7.900000	0.020826	0.000717	7.800000	0.021060	-0.001387
8.100000	0.019765	0.004726	8.000000	0.020391	0.002760
8.300000	0.017985	0.008357	8.200000	0.018959	0.006596
8.500000	0.015586	0.011490	8.400000	0.016855	0.009992
8.700000	0.012690	0.014029	8.600000	0.014192	0.012839
8.900000	0.009428	0.015907	8.800000	0.011096	0.015054
9.100000	0.005942	0.017080	9.000000	0.007704	0.016583
9.300000	0.002372	0.017534	9.200000	0.004159	0.017397
9.500000	-0.001126	0.017284	9.400000	0.000585	0.017495
9.700000	-0.004452	0.016368	9.600000	-0.002822	0.016906
9.900000	-0.007464	0.014848	9.800000	-0.006004	0.015679
			10.000000	-0.008821	0.013887

10.100000-0.010064	0.012808	10.200000-0.011182	0.011622		
10.300000-0.012168	0.010345	10.400000-0.013014	0.008990		
10.500000-0.013715	0.007571	10.600000-0.014266	0.006104		
10.700000-0.014666	0.004604	10.800000-0.014912	0.003087		
10.900000-0.015006	0.001566	11.000000-0.014950	0.000058		
11.100000-0.014745	0.001423	11.200000-0.014399	0.002864		
11.300000-0.013915	0.004251	11.400000-0.013301	0.005571		
11.500000-0.012566	0.006813	11.600000-0.011719	0.007967		
11.700000-0.010769	0.009021	11.800000-0.009728	0.009968		
11.900000-0.008607	0.010800	12.000000-0.007419	0.011511		
12.100000-0.006175	0.012096	12.200000-0.004888	0.012551		
12.300000-0.003571	0.012875	12.400000-0.002236	0.013065		
12.500000-0.000892	0.013123	12.600000	0.000432-0.013050		
12.700000	0.001803-0.012848	12.800000	0.003226-0.012522		
12.900000	0.007068-0.012077	13.000000	0.004721-0.011518		
13.100000	0.006057-0.010854	13.200000	0.007132-0.010092		
13.300000	0.008078-0.009242	13.400000	0.008914-0.008312		
13.500000	0.009640-0.007314	13.600000	0.010255-0.006258		
13.700000	0.010755-0.005155	13.800000	0.011139-0.004017		
13.900000	0.011405-0.002856	14.000000	0.011532-0.001882		
14.100000	0.011581-0.000509	14.200000	0.011493	0.000653	
14.300000	0.011292	0.001792	14.400000	0.010980	0.002897
14.500000	0.010563	0.003959	14.600000	0.010045	0.004966
14.700000	0.009434	0.005911	14.800000	0.008737	0.006784
14.900000	0.007962	0.007577	15.000000	0.007117	0.008289
15.100000	0.006212	0.008902	15.200000	0.005257	0.009422
15.300000	0.004261	0.009841	15.400000	0.003235	0.010157
15.500000	0.002190	0.010368	15.600000	0.001136	0.010474
15.700000	0.000083	0.010474	15.800000-0.000957	0.010370	
15.900000-0.001976	0.010164	16.000000-0.002962	0.009860		
16.100000-0.003908	0.009461	16.200000-0.004803	0.008974		
16.300000-0.005641	0.008403	16.400000-0.006412	0.007756		
16.500000-0.007111	0.007040	16.600000-0.007731	0.006262		
16.700000-0.008267	0.005431	16.800000-0.008715	0.004557		
16.900000-0.009072	0.003647	17.000000-0.009334	0.002712		
17.100000-0.009501	0.001760	17.200000-0.009572	0.000803		
17.300000-0.009547	0.000152	17.400000-0.009427	0.001094		
17.500000-0.009216	0.002014	17.600000-0.008915	0.002904		
17.700000-0.008529	0.003755	17.800000-0.008062	0.004559		
17.900000-0.007521	0.005309	18.000000-0.006910	0.005997		
18.100000-0.006237	0.006619	18.200000-0.005510	0.007168		
18.300000-0.004735	0.007639	18.400000-0.003920	0.008029		
18.500000-0.003075	0.008336	18.600000-0.002207	0.008556		
18.700000-0.001326	0.008689	18.800000-0.000439	0.008734		
18.900000	0.000445-0.008691	19.000000	0.001317-0.008563		
19.100000	0.002170-0.008351	19.200000	0.002996-0.008058		
19.300000	0.003789-0.007687	19.400000	0.004543-0.007245		
19.500000	0.005254-0.006734	19.600000	0.005920-0.006162		
19.700000	0.006546-0.005535	19.800000	0.007148-0.004859		
19.900000	0.007786-0.004141	20.000000	0.008760-0.003389		

KA= 0.700000 JMAX= 10 MSTAR= 12

KD RESIJ REACIJ KD RESIJ REACIJ

1.500000	0.151351	-0.026473	1.400000	0.160001	-0.047055
1.700000	0.133183	0.005884	1.600000	0.142395	-0.009055
1.900000	0.114197	0.029859	1.800000	0.123766	0.018761
2.100000	0.094814	0.047479	2.000000	0.104529	0.039380
2.300000	0.075449	0.059881	2.200000	0.085103	0.054279
2.500000	0.056509	0.067826	2.400000	0.065902	0.064371
2.700000	0.038377	0.071903	2.600000	0.047319	0.070315
2.900000	0.021402	0.072621	2.800000	0.029724	0.072652
3.100000	0.005893	0.070448	3.000000	0.013446	0.071867
3.300000	-0.007890	0.065839	3.200000	-0.001229	0.068420
3.500000	-0.019740	0.059242	3.400000	-0.014067	0.062761
3.700000	-0.029511	0.051098	3.600000	-0.024892	0.055336
3.900000	-0.037116	0.041843	3.800000	-0.033587	0.046583
4.100000	-0.042531	0.031900	4.000000	-0.040096	0.036932
4.300000	-0.045791	0.021671	4.200000	-0.044426	0.026797
4.500000	-0.046987	0.011531	4.400000	-0.046639	0.016567
4.700000	-0.046264	0.001825	4.600000	-0.046854	0.006604
4.900000	-0.043812	-0.007148	4.800000	-0.045241	-0.002771
5.100000	-0.039860	-0.015129	5.000000	-0.042008	-0.011276
5.300000	-0.034666	-0.021914	5.200000	-0.037401	-0.018682
5.500000	-0.028512	-0.027350	5.400000	-0.031691	-0.024808
5.700000	-0.021688	-0.031340	5.600000	-0.025165	-0.029530
5.900000	-0.014491	-0.033840	5.800000	-0.018118	-0.032777
6.100000	-0.007207	-0.034860	6.000000	-0.010842	-0.034532
6.300000	-0.000111	-0.034460	6.200000	-0.003619	-0.034832
6.500000	0.006550	-0.032746	6.400000	0.003289	-0.033759
6.700000	0.012555	-0.029860	6.600000	0.009647	-0.031439
6.900000	0.017720	-0.025981	6.800000	0.015252	-0.028033
7.100000	0.021902	-0.021311	7.000000	0.019941	-0.023732
7.300000	0.025000	-0.016067	7.200000	0.023591	-0.018746
7.500000	0.026957	-0.010479	7.400000	0.026123	-0.013302
7.700000	0.027760	-0.004774	7.600000	0.027502	-0.007627
7.900000	0.027440	0.000826	7.800000	0.027737	-0.001948
8.100000	0.026064	0.006116	8.000000	0.026878	0.003522
8.300000	0.023737	0.010911	8.200000	0.025012	0.008586
8.500000	0.020592	0.015053	8.400000	0.022257	0.013073
8.700000	0.016788	0.018416	8.600000	0.018762	0.016839
8.900000	0.012500	0.020906	8.800000	0.014693	0.019774
9.100000	0.007910	0.022469	9.000000	0.010231	0.021806
9.300000	0.003206	0.023085	9.200000	0.005562	0.022895
9.500000	-0.001397	0.022772	9.400000	0.000844	0.023042
9.700000	-0.005787	0.021580	9.600000	-0.003637	0.022281
9.900000	-0.009764	0.019591	9.800000	-0.007835	0.020679
			10.000000	-0.011556	0.018331

10.100000-0.013198	0.016914	10.200000-0.014677	0.015357		
10.300000-0.015981	0.013679	10.400000-0.017101	0.011896		
10.500000-0.018030	0.010030	10.600000-0.018763	0.008100		
10.700000-0.019295	0.006126	10.800000-0.019626	0.004127		
10.900000-0.019756	0.002125	11.000000-0.019687	0.000137		
11.100000-0.019424	-0.001815	11.200000-0.018972	-0.003715		
11.300000-0.018340	-0.005544	11.400000-0.017536	-0.007286		
11.500000-0.016572	-0.008925	11.600000-0.015459	-0.010448		
11.700000-0.014211	-0.011840	11.800000-0.012842	-0.013091		
11.900000-0.011367	-0.014192	12.000000-0.009802	-0.015133		
12.100000-0.008163	-0.015908	12.200000-0.006466	-0.016513		
12.300000-0.004728	-0.016944	12.400000-0.002964	-0.017199		
12.500000-0.001185	-0.017280	12.600000	0.000602-0.017188		
12.700000	0.002411-0.016927	12.800000	0.004371-0.016502		
12.900000	0.010716-0.015919	13.000000	0.005928-0.015188		
13.100000	0.007817-0.014317	13.200000	0.009273-0.013317		
13.300000	0.010540-0.012199	13.400000	0.011655-0.010978		
13.500000	0.012621-0.009665	13.600000	0.013439-0.008276		
13.700000	0.014105-0.006825	13.800000	0.014617-0.005327		
13.900000	0.014973-0.003798	14.000000	0.015172-0.002253		
14.100000	0.013215-0.000707	14.200000	0.015105	0.000823	
14.300000	0.014844	0.002324	14.400000	0.014437	0.003781
14.500000	0.013891	0.005181	14.600000	0.013213	0.006509
14.700000	0.012411	0.007755	14.800000	0.011496	0.008907
14.900000	0.010477	0.009955	15.000000	0.009367	0.010890
15.100000	0.008177	0.011705	15.200000	0.006920	0.012392
15.300000	0.005610	0.012947	15.400000	0.004260	0.013367
15.500000	0.002884	0.013648	15.600000	0.001496	0.013790
15.700000	0.000110	0.013793	15.800000	-0.001261	0.013659
15.900000	-0.002603	0.013391	16.000000	-0.003903	0.012993
16.100000	-0.005149	0.012471	16.200000	-0.006330	0.011831
16.300000	-0.007434	0.011082	16.400000	-0.008451	0.010231
16.500000	-0.009373	0.009290	16.600000	-0.010191	0.008267
16.700000	-0.010899	0.007174	16.800000	-0.011491	0.006024
16.900000	-0.011962	0.004826	17.000000	-0.012309	0.003595
17.100000	-0.012531	0.002343	17.200000	-0.012623	0.001082
17.300000	-0.012594	-0.000175	17.400000	-0.012437	-0.001416
17.500000	-0.012160	-0.002629	17.600000	-0.011764	-0.003802
17.700000	-0.011256	-0.004924	17.800000	-0.010642	-0.005984
17.900000	-0.009929	-0.006973	18.000000	-0.009124	-0.007881
18.100000	-0.008237	-0.008701	18.200000	-0.007278	-0.009426
18.300000	-0.006255	-0.010048	18.400000	-0.005181	-0.010565
18.500000	-0.004065	-0.010970	18.600000	-0.002919	-0.011262
18.700000	-0.001753	-0.011439	18.800000	-0.000581	-0.011500
18.900000	0.000589	-0.011446	19.000000	0.001744	-0.011279
19.100000	0.002876	-0.011002	19.200000	0.003973	-0.010618
19.300000	0.005029	-0.010132	19.400000	0.006036	-0.009551
19.500000	0.006991	-0.008880	19.600000	0.007893	-0.008128
19.700000	0.008753	-0.007303	19.800000	0.009603	-0.006414
19.900000	0.010553	-0.005469	20.000000	0.012145	-0.004480

THIS PAGE IS BEST QUALITY PRACTICABLE
FROM COPY FURNISHED TO DDC

KA= 0.800000 JMAX= 28 MSTAR= 30
KD RESIJ REACIJ KD RESIJ REACIJ

1.700000	0.170252	0.001670	1.600000	0.181933	0.018942
1.900000	0.146176	0.033967	1.800000	0.158311	0.019101
2.100000	0.121588	0.057395	2.000000	0.133913	0.046646
2.300000	0.097017	0.073839	2.200000	0.109268	0.066409
2.500000	0.072977	0.084433	2.400000	0.084900	0.079811
2.700000	0.049950	0.090004	2.600000	0.061308	0.087802
2.900000	0.028381	0.091236	2.800000	0.038958	0.091123
3.100000	0.008662	0.088748	3.000000	0.018268	0.090420
3.300000	0.008879	0.083130	3.200000	0.000399	0.086294
3.500000	0.023980	0.074957	3.400000	0.016748	0.079327
3.700000	0.036453	0.064795	3.600000	0.030553	0.070089
3.900000	0.046188	0.053201	3.800000	0.041667	0.059143
4.100000	0.053154	0.040710	4.000000	0.050016	0.047034
4.300000	0.057392	0.027835	4.200000	0.055608	0.034290
4.500000	0.059017	0.015054	4.400000	0.058521	0.021405
4.700000	0.058212	0.002802	4.600000	0.058905	0.008837
4.900000	0.055214	0.008538	4.800000	0.056970	0.003004
5.100000	0.050311	0.018640	5.000000	0.052981	0.013762
5.300000	0.043831	0.027241	5.200000	0.047247	0.023142
5.500000	0.036126	0.034149	5.400000	0.040109	0.030916
5.700000	0.027565	0.039236	5.600000	0.031929	0.036925
5.900000	0.018520	0.042447	5.800000	0.023080	0.041077
6.100000	0.009355	0.043792	6.000000	0.013931	0.043349
6.300000	0.000415	0.043346	6.200000	0.004837	0.043786
6.500000	0.007984	0.041239	6.400000	0.003870	0.042490
6.700000	0.015566	0.037652	6.600000	0.011893	0.039617
6.900000	0.022097	0.032806	6.800000	0.018976	0.035371
7.100000	0.027394	0.026957	7.000000	0.024909	0.029990
7.300000	0.031330	0.020379	7.200000	0.029538	0.023741
7.500000	0.033831	0.013359	7.400000	0.032762	0.016906
7.700000	0.034879	0.006185	7.600000	0.034535	0.009773
7.900000	0.034511	0.000865	7.800000	0.034868	0.002628
8.100000	0.032813	0.007550	8.000000	0.033821	0.004261
8.300000	0.029914	0.013577	8.200000	0.031504	0.010644
8.500000	0.025982	0.018807	8.400000	0.028065	0.016306
8.700000	0.021216	0.023059	8.600000	0.023690	0.021064
8.900000	0.015835	0.026217	8.800000	0.018588	0.024780
9.100000	0.010072	0.028208	9.000000	0.012986	0.027361
9.300000	0.004163	0.029009	9.200000	0.007121	0.028757
9.500000	0.001658	0.028639	9.400000	0.001228	0.028967
9.700000	0.007173	0.027162	9.600000	0.004467	0.028034
9.900000	0.012182	0.024681	9.800000	0.009753	0.026040
			10.000000	0.014444	0.023105

THIS PAGE IS BEST QUALITY PRACTICABLE
FROM COPY FURNISHED TO DDC

10.100000-0.016516	0.021331	10.200000-0.018384	0.019380		
10.300000-0.020033	0.017275	10.400000-0.021451	0.015039		
10.500000-0.022629	0.012696	10.600000-0.023560	0.010272		
10.700000-0.024240	0.007791	10.800000-0.024666	0.005280		
10.900000-0.024840	0.002761	11.000000-0.024764	0.000262		
11.100000-0.024443	0.002195	11.200000-0.023885	0.004586		
11.300000-0.023101	0.006889	11.400000-0.022100	0.009083		
11.500000-0.020898	0.011149	11.600000-0.019509	0.013068		
11.700000-0.017950	0.014824	11.800000-0.016239	0.016404		
11.900000-0.014396	0.017794	12.000000-0.012441	0.018984		
12.100000-0.010394	0.019965	12.200000-0.008278	0.020732		
12.300000-0.006114	0.021281	12.400000-0.003925	0.021610		
12.500000-0.001732	0.021718	12.600000	0.000444-0.021609		
12.700000	0.002581-0.021288	12.800000	0.004659-0.020759		
12.900000	0.006658-0.020033	13.000000	0.008560-0.019119		
13.100000	0.010348-0.018029	13.200000	0.012006-0.016777		
13.300000	0.013520-0.015376	13.400000	0.014876-0.013844		
13.500000	0.016065-0.012197	13.600000	0.017077-0.010453		
13.700000	0.017904-0.008631	13.800000	0.018541-0.006749		
13.900000	0.018985-0.004828	14.000000	0.019234-0.002886		
14.100000	0.019288-0.000943	14.200000	0.019150	0.000982	
14.300000	0.018823	0.002870	14.400000	0.018314	0.004703
14.500000	0.017630	0.006465	14.600000	0.016780	0.008138
14.700000	0.015775	0.009707	14.800000	0.014626	0.011158
14.900000	0.013348	0.012479	15.000000	0.011954	0.013659
15.100000	0.010460	0.014686	15.200000	0.008881	0.015555
15.300000	0.007235	0.016257	15.400000	0.005539	0.016789
15.500000	0.003809	0.017147	15.600000	0.002064	0.017330
15.700000	0.000320	0.017338	15.800000	0.001405	0.017173
15.900000	0.003094	0.016841	16.000000	0.004731	0.016344
16.100000	0.006300	0.015692	16.200000	0.007788	0.014891
16.300000	0.009180	0.013953	16.400000	0.010463	0.012887
16.500000	0.011627	0.011705	16.600000	0.012662	0.010422
16.700000	0.013558	0.009051	16.800000	0.014308	0.007606
16.900000	0.014908	0.006102	17.000000	0.015352	0.004555
17.100000	0.015638	0.002981	17.200000	0.015765	0.001396
17.300000	0.015734	0.000184	17.400000	0.015547	0.001745
17.500000	0.015208	0.003270	17.600000	0.014721	0.004746
17.700000	0.014093	0.006158	17.800000	0.013332	0.007492
17.900000	0.012447	0.008737	18.000000	0.011448	0.009882
18.100000	0.010346	0.010915	18.200000	0.009154	0.011828
18.300000	0.007883	0.012614	18.400000	0.006548	0.013266
18.500000	0.005162	0.013779	18.600000	0.003740	0.014149
18.700000	0.002296	0.014374	18.800000	0.000844	0.01400000
18.900000	0.00060188	0.000000	19.000000	0.00202489	0.000000
19.100000	0.00341390	0.000000	19.200000	0.00475354	0.000000
19.300000	0.006032	0.012749	19.400000	0.007237	0.012020
19.500000	0.008358	0.011179	19.600000	0.009385	0.010236
19.700000	0.010308	0.009201	19.800000	0.011119	0.008084
19.900000	0.011811	0.006898	20.000000	0.012378	0.005656

KA= 0.900000 JMAX= 16 MSTAR= 18

KD RESIJ REACTJ KD RESIJ REACTJ

1.900000	0.180832	0.035256	1.800000	0.195685	0.015444
2.100000	0.150731	0.065876	2.000000	0.165820	0.051889
2.300000	0.120640	0.087179	2.200000	0.135644	0.077558
2.500000	0.091185	0.100960	2.400000	0.105795	0.094928
2.700000	0.062959	0.108388	2.600000	0.076883	0.105407
2.900000	0.036502	0.110378	2.800000	0.049477	0.110012
3.100000	0.012294	0.107729	3.000000	0.024090	0.109586
3.300000	-0.009262	0.101185	3.200000	0.001162	0.104898
3.500000	-0.027846	0.091464	3.400000	-0.018942	0.096677
3.700000	-0.043228	0.079269	3.600000	-0.035948	0.085633
3.900000	-0.055272	0.065284	3.800000	-0.049672	0.072459
4.100000	-0.063936	0.050169	4.000000	-0.060026	0.057828
4.300000	-0.069271	0.034553	4.200000	-0.067013	0.042386
4.500000	-0.071414	0.019023	4.400000	-0.070730	0.026743
4.700000	-0.070586	0.004111	4.600000	-0.071355	0.011458
4.900000	-0.067074	-0.009712	4.800000	-0.069145	-0.002963
5.100000	-0.061229	-0.022045	5.000000	-0.064420	-0.016086
5.300000	-0.053448	-0.032567	5.200000	-0.057555	-0.027549
5.500000	-0.044160	-0.041038	5.400000	-0.048968	-0.037070
5.700000	-0.033813	-0.047302	5.600000	-0.039091	-0.044452
5.900000	-0.022861	-0.051288	5.800000	-0.028385	-0.049581
6.100000	-0.011747	-0.053007	6.000000	-0.017297	-0.052427
6.300000	-0.000890	-0.052546	6.200000	-0.006261	-0.053041
6.500000	0.009323	-0.050061	6.400000	0.004319	-0.051544
6.700000	0.018554	-0.045772	6.600000	0.014081	-0.048127
6.900000	0.026519	-0.039946	6.800000	0.022710	-0.043032
7.100000	0.032993	-0.032890	7.000000	0.029953	-0.036551
7.300000	0.037818	-0.024940	7.200000	0.035619	-0.029006
7.500000	0.040904	-0.016443	7.400000	0.039581	-0.020738
7.700000	0.042228	-0.007748	7.600000	0.041785	-0.012099
7.900000	0.041832	0.000805	7.800000	0.042240	-0.003434
8.100000	0.039818	0.008900	8.000000	0.041019	0.004928
8.300000	0.036344	0.016254	8.200000	0.038252	0.012686
8.500000	0.031610	0.022622	8.400000	0.034120	0.019575
8.700000	0.025858	0.027809	8.600000	0.028845	0.025373
8.900000	0.019353	0.031671	8.800000	0.022682	0.029913
9.100000	0.012377	0.034121	9.000000	0.015906	0.033076
9.300000	0.005218	0.035127	9.200000	0.008803	0.034805
9.500000	-0.001842	0.034713	9.400000	0.001659	0.035094
9.700000	-0.008537	0.032955	9.600000	-0.005251	0.033996
9.900000	-0.014625	0.029975	9.800000	-0.011671	0.031608
			10.000000	-0.017374	0.028077

USL Tech. Memo.
No. 960-17-65

COLUMBIA UNIVERSITY
RUBIN LABORATORIES
CONTRACT Nonr-266(34)

10.100000-0.019896	0.025937	10.200000-0.022171	0.023583		
10.300000-0.024181	0.021040	10.400000-0.025912	0.018337		
10.500000-0.027352	0.015503	10.600000-0.028493	0.012569		
10.700000-0.029330	0.009566	10.800000-0.029860	0.006523		
10.900000-0.030083	0.003472	11.000000-0.030004	0.000442		
11.100000-0.029627	-0.002538	11.200000-0.028963	-0.005439		
11.300000-0.028023	-0.008234	11.400000-0.026821	-0.010898		
11.500000-0.025374	-0.013408	11.600000-0.023700	-0.015741		
11.700000-0.021818	-0.017877	11.800000-0.019752	-0.019799		
11.900000-0.017525	-0.021492	12.000000-0.015160	-0.022943		
12.100000-0.012685	-0.024142	12.200000-0.010124	-0.025082		
12.300000-0.007504	-0.025757	12.400000-0.004851	-0.026165		
12.500000-0.002194	-0.026306	12.600000	0.000443-0.026183		
12.700000	0.003034-0.025803	12.800000	0.005555-0.025172		
12.900000	0.007980-0.024300	13.000000	0.010290-0.023200		
13.100000	0.012461-0.021887	13.200000	0.014476-0.020376		
13.300000	0.016316-0.018685	13.400000	0.017966-0.016834		
13.500000	0.019414-0.014843	13.600000	0.020647-0.012734		
13.700000	0.021657-0.010529	13.800000	0.022436-0.008251		
13.900000	0.022982-0.005925	14.000000	0.023291-0.003572		
14.100000	0.023364-0.001218	14.200000	0.023204	0.001115	
14.300000	0.022815	0.003405	14.400000	0.022205	0.005628
14.500000	0.021383	0.007765	14.600000	0.020359	0.009795
14.700000	0.019146	0.011701	14.800000	0.017760	0.013464
14.900000	0.016215	0.015069	15.000000	0.014530	0.016504
15.100000	0.012723	0.017755	15.200000	0.010812	0.018813
15.300000	0.008818	0.019670	15.400000	0.006762	0.020320
15.500000	0.004662	0.020760	15.600000	0.002532	0.020987
15.700000	0.000269	0.021003	15.800000	-0.001583	0.020810
15.900000	-0.003660	0.020413	16.000000	-0.005653	0.019817
16.100000	-0.007561	0.019032	16.200000	-0.009368	0.018067
16.300000	-0.011059	0.016934	16.400000	-0.012618	0.015647
16.500000	-0.014032	0.014220	16.600000	-0.015290	0.012668
16.700000	-0.016379	0.011009	16.800000	-0.017293	0.009261
16.900000	-0.018023	0.007441	17.000000	-0.018565	0.005568
17.100000	-0.018916	0.003662	17.200000	-0.019073	0.001742
17.300000	-0.019039	-0.000173	17.400000	-0.018816	-0.002065
17.500000	-0.018407	-0.003914	17.600000	-0.017819	-0.005704
17.700000	-0.017059	-0.007416	17.800000	-0.016138	-0.009035
17.900000	-0.015065	-0.010546	18.000000	-0.013853	-0.011936
18.100000	-0.012515	-0.013191	18.200000	-0.011065	-0.014302
18.300000	-0.00	519-0.015258	18.400000	-0.007892	-0.016051
18.500000	-0.006	0-0.016677	18.600000	-0.004460	-0.017129
18.700000	-0.002686	-0.017407	18.800000	-0.000892	-0.017508
18.900000	0.000910	-0.017434	19.000000	0.002720	-0.017187
19.100000	0.004566	-0.01672	19.200000	0.006623	-0.016194
19.300000	0.012595	-0.015461	19.400000	0.007178	-0.014582
19.500000	0.009376	-0.01367	19.600000	0.010857	-0.012427
19.700000	0.012087	-0.01175	19.800000	0.013136	-0.009824
19.900000	0.014019	-0.00839	20.000000	0.014738	-0.006886

KA= 1.000000 JMAX= 20 MSTAR= 30

KD RESIJ REACIJ KD RESIJ REACIJ

2.100000	0.181846	0.071556	2.000000	0.199795	0.053323
2.300000	0.146042	0.098897	2.200000	0.163897	0.086586
2.500000	0.110977	0.116560	2.400000	0.128372	0.108810
2.700000	0.077355	0.126307	2.600000	0.093944	0.122338
2.900000	0.045819	0.129378	2.800000	0.061289	0.128610
3.100000	0.016935	0.126796	3.000000	0.031013	0.128734
3.300000	-0.008815	0.119487	3.200000	0.003642	0.123677
3.500000	-0.031051	0.108327	3.400000	-0.020392	0.114335
3.700000	-0.049499	0.094166	3.600000	-0.040761	0.101570
3.900000	-0.063994	0.077824	3.800000	-0.057246	0.086217
4.100000	-0.074484	0.060093	4.000000	-0.069739	0.069084
4.300000	-0.081028	0.041723	4.200000	-0.078242	0.050943
4.500000	-0.083786	0.023413	4.400000	-0.082866	0.032519
4.700000	-0.083014	0.005800	4.600000	-0.083822	0.014483
4.900000	-0.079054	-0.010555	4.800000	-0.081409	-0.002567
5.100000	-0.072316	-0.025176	5.000000	-0.076004	-0.018109
5.300000	-0.063269	-0.037676	5.200000	-0.068050	-0.031711
5.500000	-0.052418	-0.047769	5.400000	-0.058036	-0.043038
5.700000	-0.040295	-0.055267	5.600000	-0.046482	-0.051850
5.900000	-0.027434	-0.060082	5.800000	-0.033923	-0.058011
6.100000	-0.014359	-0.062222	6.000000	-0.020891	-0.061482
6.300000	-0.001567	-0.061787	6.200000	-0.007898	-0.062317
6.500000	0.010484	-0.058961	6.400000	0.004577	-0.060659
6.700000	0.021394	-0.053997	6.600000	0.016105	-0.056727
6.900000	0.030824	-0.047210	6.800000	0.026312	-0.050809
7.100000	0.038507	-0.038961	7.000000	0.034897	-0.043244
7.300000	0.044255	-0.029645	7.200000	0.041631	-0.034411
7.500000	0.047958	-0.019670	7.400000	0.046365	-0.024714
7.700000	0.049586	-0.009448	7.600000	0.049030	-0.014564
7.900000	0.049188	0.000620	7.800000	0.049635	-0.004371
8.100000	0.046880	0.010161	8.000000	0.048263	0.005478
8.300000	0.042847	0.018839	8.200000	0.045066	0.014627
8.500000	0.037325	0.026366	8.400000	0.040255	0.022762
8.700000	0.030594	0.032509	8.600000	0.034091	0.029623
8.900000	0.022969	0.037098	8.800000	0.026873	0.035006
9.100000	0.014780	0.040027	9.000000	0.018923	0.038774
9.300000	0.006365	0.041258	9.200000	0.010580	0.040855
9.500000	-0.001941	0.040817	9.400000	0.002178	0.041243
9.700000	-0.009827	0.038792	9.600000	-0.005955	0.039995
9.900000	-0.017006	0.035325	9.800000	-0.013521	0.037227
			10.000000	-0.020251	0.033109

10.100000-0.023230	0.030608	10.200000-0.025919	0.027853		
10.300000-0.028298	0.024874	10.400000-0.030350	0.021705		
10.500000-0.032060	0.018382	10.600000-0.033419	0.014938		
10.700000-0.034420	0.011411	10.800000-0.035060	0.007836		
10.900000-0.035340	0.004249	11.000000-0.035263	0.000686		
11.100000-0.034837	-0.002820	11.200000-0.034072	-0.006295		
11.300000-0.032982	-0.009527	11.400000-0.031583	-0.012666		
11.500000-0.029894	-0.015624	11.600000-0.027938	-0.018376		
11.700000-0.025737	-0.020898	11.800000-0.023318	-0.023169		
11.900000-0.020708	-0.025171	12.000000-0.017935	-0.026889		
12.100000-0.015030	-0.028311	12.200000-0.012024	-0.029429		
12.300000-0.008947	-0.030235	12.400000-0.005831	-0.030728		
12.500000-0.002707	-0.030907	12.600000	0.000394-0.030776		
12.700000	0.003443-0.030341	12.800000	0.006409-0.029610		
12.900000	0.009265-0.028597	13.000000	0.011985-0.027315		
13.100000	0.014544-0.025781	13.200000	0.016919-0.024014		
13.300000	0.019090-0.022035	13.400000	0.021039-0.019866		
13.500000	0.022750-0.017532	13.600000	0.024209-0.015058		
13.700000	0.025406-0.012470	13.800000	0.026332-0.009796		
13.900000	0.026984-0.007063	14.000000	0.027358-0.004299		
14.100000	0.027454-0.001532	14.200000	0.027276	0.001211	
14.300000	0.026829	0.003904	14.400000	0.026121	0.006521
14.500000	0.025163	0.009036	14.600000	0.023968	0.011427
14.700000	0.022551	0.013672	14.800000	0.020929	0.015750
14.900000	0.019121	0.017644	15.000000	0.017146	0.019337
15.100000	0.015027	0.020814	15.200000	0.012787	0.022066
15.300000	0.010448	0.023081	15.400000	0.008037	0.023854
15.500000	0.005576	0.024379	15.600000	0.003092	0.024655
15.700000	0.000608	0.024682	15.800000	-0.001850	0.024463
15.900000	-0.004258	0.024003	16.000000	-0.006594	0.023311
16.100000	-0.008835	0.022395	16.200000	-0.010961	0.021268
16.300000	-0.012951	0.019942	16.400000	-0.014788	0.018435
16.500000	-0.016456	0.016763	16.600000	-0.017940	0.014944
16.700000	-0.019227	0.012998	16.800000	-0.020308	0.010946
16.900000	-0.021174	0.008809	17.000000	-0.021819	0.006610
17.100000	-0.022239	0.004371	17.200000	-0.022433	0.002114
17.300000	-0.022993	0.000000-0.000137	17.400000	15.000000-0.002361	
17.500000	0.00038.000000-0.004536	17.600000	0.53.000000-0.006641		
17.700000	0.016.000000-0.008657	17.800000	0.25.000000-0.010563		
17.900000	0.040.000000-0.012343	18.000000	0.17.000000-0.013980		
18.100000	0.047.000000-0.015460	18.200000	0.068.000000-0.016770		
18.300000	0.021.000000-0.017899	18.400000	0.023.000000074.000000		
18.500000	0.003.000000088.000000	18.600000	0.004.00000009.000000		
18.700000	0.018.000000087.000000	18.800000	0.048.000000085.000000		
18.900000	0.051.000000070.000000	19.000000	0.055.000000018.000000		
19.100000	0.053.000000008.000000	19.200000	0.020.000000074.000000		
19.300000	0.039.000000037.000000	19.400000	0.063.000000022.000000		
19.500000	0.024.000000046.000000	19.600000	0.030.000000096.000000		
19.700000	0.082.000000003.000000	19.800000	0.007.000000008.000000		
19.900000	0.066.000000045.000000	20.000000	0.092.000000048.000000		

KA= 1.200000 JMAX= 28 MSTAR= 30
 KD RESIJ REACIJ KD RESIJ REACIJ

2.500000	0.154632	0.140707	2.400000	0.177653	0.127867
2.700000	0.110084	0.157287	2.600000	0.132072	0.150376
2.900000	0.068226	0.163977	2.800000	0.088770	0.161740
3.100000	0.029805	0.162604	3.000000	0.048544	0.164203
3.300000	-0.004546	0.154602	3.200000	0.012086	0.159350
3.500000	-0.034324	0.141242	3.400000	-0.020033	0.148517
3.700000	-0.059163	0.123703	3.600000	-0.047378	0.132923
3.900000	-0.078841	0.103106	3.800000	-0.069655	0.113719
4.100000	-0.093283	0.080518	4.000000	-0.086716	0.091997
4.300000	-0.102554	0.056941	4.200000	-0.098555	0.068793
4.500000	-0.106859	0.033309	4.400000	-0.105310	0.045077
4.700000	-0.106522	0.010468	4.600000	-0.107246	0.021741
4.900000	-0.101982	-0.010837	4.800000	-0.104746	-0.000419
5.100000	-0.093768	-0.029969	5.000000	-0.098298	-0.020710
5.300000	-0.082486	-0.046414	5.200000	-0.088471	-0.038555
5.500000	-0.068790	-0.059783	5.400000	-0.075897	-0.053502
5.700000	-0.053369	-0.069821	5.600000	-0.061252	-0.065230
5.900000	-0.036918	-0.076400	5.800000	-0.045229	-0.073546
6.100000	-0.020120	-0.079520	6.000000	-0.028521	-0.078388
6.300000	-0.003623	-0.079301	6.200000	-0.011795	-0.079816
6.500000	0.011977	-0.075969	6.400000	0.004324	-0.078006
6.700000	0.026151	-0.069847	6.600000	0.019272	-0.073234
6.900000	0.038456	-0.061335	6.800000	0.032562	-0.065862
7.100000	0.048539	-0.050897	7.000000	0.043793	-0.056326
7.300000	0.056147	-0.039037	7.200000	0.052664	-0.045112
7.500000	0.061131	-0.026283	7.400000	0.058972	-0.032738
7.700000	0.063444	-0.013169	7.600000	0.062620	-0.019738
7.900000	0.063140	-0.000210	7.800000	0.063612	-0.006639
8.100000	0.060366	0.012106	8.000000	0.062050	0.006057
8.300000	0.055351	0.023344	8.200000	0.058121	0.017885
8.500000	0.048396	0.033127	8.400000	0.052094	0.028438
8.700000	0.039859	0.041150	8.600000	0.044301	0.037375
8.900000	0.030141	0.047187	8.800000	0.035122	0.044428
9.100000	0.019669	0.051098	9.000000	0.024973	0.049414
9.300000	0.008879	0.052827	9.200000	0.014287	0.052236
9.500000	-0.001803	0.052402	9.400000	0.003498	0.052879
9.700000	-0.011968	0.049932	9.600000	-0.006974	0.051413
9.900000	-0.021247	0.045595	9.800000	-0.016739	0.047983
			10.000000	-0.025451	0.042801

10.100000-0.029318	0.039636	10.200000-0.032816	0.036139		
10.300000-0.035918	0.032350	10.400000-0.038602	0.028312		
10.500000-0.040849	0.024069	10.600000-0.042647	0.019667		
10.700000-0.043986	0.015152	10.800000-0.044861	0.010570		
10.900000-0.045273	0.005968	11.000000-0.045226	0.001391		
11.100000-0.044730	0.003117	11.200000-0.043796	0.007513		
11.300000-0.042443	0.011756	11.400000-0.040691	0.015806		
11.500000-0.038564	0.019628	11.600000-0.036090	0.023189		
11.700000-0.033298	0.026456	11.800000-0.030223	0.029405		
11.900000-0.026899	0.032010	12.000000-0.023362	0.034253		
12.100000-0.019651	0.036118	12.200000-0.015806	0.037592		
12.300000-0.011867	0.038667	12.400000-0.007873	0.039339		
12.500000-0.003865	0.039609	12.600000	0.000118-0.039480		
12.700000	0.004036-0.038960	12.800000	0.007853-0.038060		
12.900000	0.011531-0.036794	13.000000	0.015038-0.035182		
13.100000	0.018342-0.033244	13.200000	0.021412-0.031005		
13.300000	0.024223-0.028490	13.400000	0.026750-0.025730		
13.500000	0.028973-0.022754	13.600000	0.030875-0.019596		
13.700000	0.032441-0.016288	13.800000	0.033661-0.012867		
13.900000	0.034529-0.009367	14.000000	0.035040-0.005824		
14.100000	0.035194-0.002274	14.200000	0.034996	0.001249	
14.300000	0.034453	0.004710	14.400000	0.033573	0.008076
14.500000	0.032372	0.011315	14.600000	0.030865	0.014396
14.700000	0.029070	0.017292	14.800000	0.027011	0.019976
14.900000	0.024710	0.022426	15.000000	0.022194	0.024619
15.100000	0.019491	0.026538	15.200000	0.016629	0.028167
15.300000	0.013639	0.029494	15.400000	0.010552	0.030510
15.500000	0.007400	0.031209	15.600000	0.004215	0.031588
15.700000	0.001029	0.031648	15.800000-0.002127	0.031392	
15.900000-0.005222	0.030827	16.000000-0.008226	0.029961		
16.100000-0.011111	0.028808	16.200000-0.013850	0.027382		
16.300000-0.016416	0.025702	16.400000-0.018788	0.023785		
16.500000-0.020944	0.021656	16.600000-0.022865	0.019336		
16.700000-0.024536	0.016851	16.800000-0.025942	0.014229		
16.900000-0.027073	0.011495	17.000000-0.027921	0.008680		
17.100000-0.028481	0.005811	17.200000-0.028750	0.002918		
17.300000-0.028731	0.000029	17.400000-0.028425	0.002827		
17.500000-0.027840	0.005621	17.600000-0.026984	0.008328		
17.700000-0.025869	0.010922	17.800000-0.024509	0.013377		
17.900000-0.022920	0.015672	18.000000-0.021121	0.017785		
18.100000-0.019131	0.019697	18.200000-0.016973	0.021392		
18.300000-0.014669	0.022856	18.400000-0.012244	0.024076		
18.500000-0.009723	0.025043	18.600000-0.007133	0.025750		
18.700000-0.004500	0.026193	18.800000-0.001850	0.026370		
18.900000	0.000791-0.026283	19.000000	0.003396-0.025935		
19.100000	0.005939-0.025332	19.200000	0.008397-0.024483		
19.300000	0.010746-0.023399	19.400000	0.012963-0.022094		
19.500000	0.015029-0.020581	19.600000	0.016923-0.018879		
19.700000	0.018630-0.017007	19.800000	0.020134-0.014984		
19.900000	0.021422-0.012832	20.000000	0.022484-0.010574		

KA= 1.300000 JMAX= 26 MSTAR= 28

KD RESIJ REACIJ KD RESIJ REACIJ

2.700000	0.128277	0.168186	2.600000	0.152891	0.158891
2.900000	0.081384	0.177887	2.800000	0.104406	0.174386
3.100000	0.038286	0.177938	3.000000	0.059314	0.178989
3.300000	-0.000312	0.170230	3.200000	0.018386	0.174953
3.500000	-0.033846	0.156303	3.400000	-0.017741	0.163954
3.700000	-0.061906	0.137540	3.600000	-0.048580	0.147444
3.900000	-0.084240	0.115228	3.800000	-0.073798	0.126750
4.100000	-0.100760	0.090576	4.000000	-0.093226	0.103122
4.300000	-0.111533	0.064719	4.200000	-0.106853	0.077730
4.500000	-0.116780	0.038705	4.400000	-0.114828	0.051670
4.700000	-0.116857	0.013485	4.600000	-0.117437	0.025941
4.900000	-0.112243	-0.010103	4.800000	-0.115102	0.001440
5.100000	-0.103524	-0.031344	5.000000	-0.108357	-0.021056
5.300000	-0.091364	-0.049658	5.200000	-0.097830	-0.040898
5.500000	-0.076488	-0.064609	5.400000	-0.084218	-0.057576
5.700000	-0.059657	-0.075901	5.600000	-0.068269	-0.070725
5.900000	-0.041638	-0.083388	5.800000	-0.050748	-0.080124
6.100000	-0.023189	-0.087061	6.000000	-0.032422	-0.085697
6.300000	-0.005029	-0.087045	6.200000	-0.014030	-0.087502
6.500000	0.012181	-0.083584	6.400000	0.003734	-0.085725
6.700000	0.027855	-0.077027	6.600000	0.020243	-0.080667
6.900000	0.041495	-0.067815	6.800000	0.034956	-0.072723
7.100000	0.052710	-0.056453	7.000000	0.047426	-0.062369
7.300000	0.061213	-0.043497	7.200000	0.057314	-0.050139
7.500000	0.066836	-0.029529	7.400000	0.064391	-0.036603
7.700000	0.069522	-0.015134	7.600000	0.068545	-0.022348
7.900000	0.069325	-0.000884	7.800000	0.069777	-0.007957
8.100000	0.066402	0.012684	8.000000	0.068191	0.006017
8.300000	0.061001	0.025087	8.200000	0.063992	0.019059
8.500000	0.053452	0.035908	8.400000	0.057472	0.030719
8.700000	0.044146	0.044806	8.600000	0.048992	0.040615
8.900000	0.033522	0.051532	8.800000	0.038970	0.048453
9.100000	0.022050	0.055924	9.000000	0.027862	0.054026
9.300000	0.010207	0.057920	9.200000	0.016145	0.057222
9.500000	-0.001533	0.057545	9.400000	0.004296	0.058023
9.700000	-0.012723	0.054916	9.600000	-0.007223	0.056502
9.900000	-0.022953	0.050229	9.800000	-0.017982	0.052815
			10.000000	-0.027595	0.047193

10.100000-0.031869	0.043747	10.200000-0.035740	0.039933		
10.300000-0.039178	0.035795	10.400000-0.042158	0.031379		
10.500000-0.044659	0.026736	10.600000-0.046668	0.021914		
10.700000-0.048173	0.016965	10.800000-0.049169	0.011938		
10.900000-0.049655	0.006886	11.000000-0.049638	0.001857		
11.100000-0.049125	0.003098	11.200000-0.048132	0.007933		
11.300000-0.046676	0.012603	11.400000-0.044780	0.017065		
11.500000-0.042470	0.021278	11.600000-0.039778	0.025205		
11.700000-0.036734	0.028814	11.800000-0.033377	0.032073		
11.900000-0.029743	0.034958	12.000000-0.025874	0.037445		
12.100000-0.021811	0.039517	12.200000-0.017598	0.041161		
12.300000-0.013278	0.042368	12.400000-0.008896	0.043133		
12.500000-0.004496	0.043455	12.600000-0.000122	0.043338		
12.700000	0.004185-0.042792	12.800000	0.008382-0.041827		
12.900000	0.012430-0.040461	13.000000	0.016291-0.038712		
13.100000	0.019931-0.036604	13.200000	0.023316-0.034163		
13.300000	0.026418-0.031419	13.400000	0.029210-0.028403		
13.500000	0.031669-0.025148	13.600000	0.033775-0.021691		
13.700000	0.035515-0.018069	13.800000	0.036875-0.014319		
13.900000	0.037847-0.010481	14.000000	0.038429-0.006593		
14.100000	0.038619-0.002695	14.200000	0.038422	0.001174	
14.300000	0.037844	0.004978	14.400000	0.036897	0.008678
14.500000	0.035596	0.012241	14.600000	0.033958	0.015633
14.700000	0.032003	0.018823	14.800000	0.029757	0.021782
14.900000	0.027244	0.024483	15.000000	0.024493	0.026905
15.100000	0.021535	0.029026	15.200000	0.018401	0.030830
15.300000	0.015125	0.032303	15.400000	0.011741	0.033435
15.500000	0.008284	0.034219	15.600000	0.004788	0.034651
15.700000	0.001290	0.034733	15.800000	-0.002176	0.034468
15.900000	-0.005577	0.033863	16.000000	-0.008880	0.032928
16.100000	-0.012053	0.031676	16.200000	-0.015067	0.030124
16.300000	-0.017893	0.028291	16.400000	-0.020507	0.026199
16.500000	-0.022884	0.023871	16.600000	-0.025005	0.021333
16.700000	-0.026851	0.018614	16.800000	-0.028407	0.015741
16.900000	-0.029662	0.012745	17.000000	-0.030606	0.009658
17.100000	-0.031234	0.006511	17.200000	-0.031544	0.003336
17.300000	-0.031536	0.000164	17.400000	-0.031213	-0.002973
17.500000	-0.030583	-0.006044	17.600000	-0.029656	-0.009020
17.700000	-0.028444	-0.011872	17.800000	-0.026962	-0.014574
17.900000	-0.025228	-0.017100	18.000000	-0.023261	-0.019428
18.100000	-0.021085	-0.021536	18.200000	-0.018723	-0.023406
18.300000	-0.016200	-0.025023	18.400000	-0.013543	-0.026373
18.500000	-0.010780	-0.027445	18.600000	-0.007940	-0.028233
18.700000	-0.005050	-0.028730	18.800000	-0.002142	-0.028936
18.900000	0.000758	-0.028852	19.000000	0.003619	-0.028480
19.100000	0.006414	-0.027829	19.200000	0.009115	-0.026908
19.300000	0.011698	-0.025728	19.400000	0.014138	-0.024303
19.500000	0.016412	-0.022651	19.600000	0.018499	-0.020791
19.700000	0.020380	-0.018742	19.800000	0.022039	-0.016527
19.900000	0.023462	-0.014170	20.000000	0.024637	-0.011695

THIS PAGE IS BEST QUALITY PRACTICABLE
FROM COPY FURNISHED TO DDC

KA= 1.400000 JMAX= 26 MSTAR= 28
KD RESIJ REACIJ KD RESIJ REACIJ

2.900000	0.095867	0.188129	2.800000	0.121264	0.182681
3.100000	0.048270	0.190504	3.000000	0.071503	0.190607
3.300000	0.005565	0.183719	3.200000	0.026264	0.188123
3.500000	-0.031629	0.169738	3.400000	-0.013754	0.177521
3.700000	-0.062858	0.150196	3.600000	-0.048011	0.160567
3.900000	-0.087842	0.126567	3.800000	-0.076141	0.138805
4.100000	-0.106477	0.100214	4.000000	-0.097953	0.113650
4.300000	-0.118831	0.072403	4.200000	-0.113428	0.086416
4.500000	-0.125136	0.044299	4.400000	-0.122719	0.058319
4.700000	-0.125776	0.016955	4.600000	-0.126135	0.030471
4.900000	-0.121268	-0.008702	4.800000	-0.124128	0.003863
5.100000	-0.112242	-0.031879	5.000000	-0.117276	-0.020644
5.300000	-0.099421	-0.051934	5.200000	-0.106258	-0.042331
5.500000	-0.083589	-0.068378	5.400000	-0.091830	-0.060632
5.700000	-0.065573	-0.080882	5.600000	-0.074802	-0.075137
5.900000	-0.046209	-0.089273	5.800000	-0.056008	-0.085596
6.100000	-0.026319	-0.093533	6.000000	-0.036230	-0.091915
6.300000	-0.006688	-0.093789	6.200000	-0.016425	-0.094149
6.500000	0.011962	-0.090298	6.400000	0.002802	-0.092491
6.700000	0.028990	-0.083433	6.600000	0.020715	-0.087260
6.900000	0.043851	-0.073665	6.800000	0.036721	-0.078879
7.100000	0.056114	-0.061539	7.000000	0.050330	-0.067860
7.300000	0.065463	-0.047654	7.200000	0.061167	-0.054777
7.500000	0.071707	-0.032638	7.400000	0.068980	-0.040247
7.700000	0.074779	-0.017126	7.600000	0.073639	-0.024904
7.900000	0.074732	-0.001738	7.800000	0.075138	-0.009379
8.100000	0.071729	0.012943	8.000000	0.073585	0.005725
8.300000	0.066035	0.026392	8.200000	0.069198	0.019852
8.500000	0.058001	0.038152	8.400000	0.062286	0.032508
8.700000	0.048050	0.047854	8.600000	0.053237	0.043280
8.900000	0.036653	0.055220	8.800000	0.042501	0.051842
9.100000	0.024315	0.060075	9.000000	0.030569	0.057968
9.300000	0.011555	0.062343	9.200000	0.017956	0.061333
9.500000	-0.001117	0.062049	9.400000	0.005177	0.062511
9.700000	-0.013216	0.059316	9.600000	-0.007267	0.060977
9.900000	-0.024297	0.054351	9.800000	-0.018909	0.057097
			10.000000	-0.029332	0.051118

USL Tech. Memo.
No. 960-17-65

THIS PAGE IS BEST QUALITY REPRODUCIBLE
FROM COPY FURNISHED TO DDO

10.100000-0.033973	0.047437	10.200000-0.038182	0.043356		
10.300000-0.041927	0.038921	10.400000-0.045180	0.034183		
10.500000-0.047918	0.029195	10.600000-0.050125	0.024010		
10.700000-0.051790	0.018683	10.800000-0.052905	0.013269		
10.900000-0.053472	0.007823	11.000000-0.053493	0.002398		
11.100000-0.052980	0.002951	11.200000-0.051946	0.008175		
11.300000-0.050412	0.013224	11.400000-0.048402	0.018051		
11.500000-0.045943	0.022613	11.600000-0.043069	0.026870		
11.700000-0.039813	0.030785	11.800000-0.036216	0.034326		
11.900000-0.032319	0.037463	12.000000-0.028164	0.040175		
12.100000-0.023797	0.042439	12.200000-0.019264	0.044243		
12.300000-0.014614	0.045575	12.400000-0.009894	0.046431		
12.500000-0.005150	0.046810	12.600000-0.000431	0.046715		
12.700000	0.004217-0.046155	12.800000	0.008750-0.045144		
12.900000	0.013125-0.043698	13.000000	0.017301-0.041838		
13.100000	0.021240-0.039589	13.200000	0.024907-0.036979		
13.300000	0.028270-0.034040	13.400000	0.031300-0.030806		
13.500000	0.033973-0.027312	13.600000	0.036268-0.023598		
13.700000	0.038167-0.019702	13.800000	0.039657-0.015667		
13.900000	0.040730-0.011534	14.000000	0.041382-0.007346		
14.100000	0.041611-0.003144	14.200000	0.041422	0.001030	
14.300000	0.040822	0.005135	14.400000	0.039824	0.009131
14.500000	0.038442	0.012981	14.600000	0.036696	0.016649
14.700000	0.034608	0.020100	14.800000	0.032202	0.023303
14.900000	0.029509	0.026231	15.000000	0.026557	0.028858
15.100000	0.023379	0.031163	15.200000	0.020010	0.033126
15.300000	0.016486	0.034733	15.400000	0.012844	0.035972
15.500000	0.009121	0.036837	15.600000	0.005354	0.037323
15.700000	0.001583	0.037431	15.800000	0.002156	0.037165
15.900000	0.005827	0.036530	16.000000	0.009393	0.035540
16.100000	0.012821	0.034208	16.200000	0.016079	0.032551
16.300000	0.019136	0.030590	16.400000	0.021965	0.028348
16.500000	0.024541	0.025850	16.600000	0.026840	0.023125
16.700000	0.028845	0.020202	16.800000	0.030538	0.017113
16.900000	0.031906	0.013890	17.000000	0.032940	0.010566
17.100000	0.033633	0.007177	17.200000	0.033983	0.003755
17.300000	0.033990	0.000335	17.400000	0.033658	0.003048
17.500000	0.032995	0.006363	17.600000	0.032010	0.009576
17.700000	0.030717	0.012657	17.800000	0.029132	0.019577
17.900000	0.027275	0.018309	18.000000	0.025166	0.020828
18.100000	0.022830	0.023112	18.200000	0.020292	0.025140
18.300000	0.017580	0.026895	18.400000	0.014722	0.028362
18.500000	0.011748	0.029532	18.600000	0.008689	0.030394
18.700000	0.005577	0.030943	18.800000	0.002442	0.031179
18.900000	0.000684	0.031101	19.000000	0.003770	0.030714
19.100000	0.006787	0.030025	19.200000	0.009704	0.029044
19.300000	0.012494	0.027783	19.400000	0.015130	0.026258
19.500000	0.017589	0.024488	19.600000	0.019847	0.022491
19.700000	0.021884	0.020291	19.800000	0.023682	0.017910
19.900000	0.025227	0.015375	20.000000	0.026504	0.012712

KA= 1.500000 JMAX= 28 MSTAR= 30
 KD RESIJ RECIJ KD RESIJ RECIJ

3.100000	0.059835	0.199300	3.000000	0.085148	0.197796
3.300000	0.013232	0.194352	3.200000	0.035834	0.198025
3.500000	-0.027466	0.180988	3.400000	-0.007890	0.188585
3.700000	-0.061764	0.161230	3.600000	-0.045438	0.171797
3.900000	-0.089354	0.136782	3.800000	-0.076409	0.149493
4.100000	-0.110117	0.109178	4.000000	-0.100589	0.123284
4.300000	-0.124118	0.079821	4.200000	-0.117952	0.094635
4.500000	-0.131598	0.049992	4.400000	-0.128651	0.064890
4.700000	-0.132962	0.020845	4.600000	-0.133013	0.035267
4.900000	-0.128756	-0.006605	4.800000	-0.131516	0.006850
5.100000	-0.119654	-0.031492	5.000000	-0.124771	-0.019417
5.300000	-0.106422	-0.053113	5.200000	-0.113503	-0.042749
5.500000	-0.089899	-0.070928	5.400000	-0.098517	-0.062523
5.700000	-0.070969	-0.084572	5.600000	-0.080679	-0.078288
5.900000	-0.050525	-0.093847	5.800000	-0.060880	-0.089761
6.100000	-0.029450	-0.098723	6.000000	-0.040013	-0.096831
6.300000	-0.008586	-0.099322	6.200000	-0.018941	-0.099543
6.500000	0.011292	-0.095910	6.400000	0.001522	-0.098096
6.700000	0.029492	-0.088879	6.600000	0.020641	-0.092818
6.900000	0.045428	-0.078722	6.800000	0.037775	-0.084157
7.100000	0.058628	-0.066018	7.000000	0.052394	-0.072650
7.300000	0.068752	-0.051400	7.200000	0.064091	-0.058907
7.500000	0.075586	-0.035538	7.400000	0.072588	-0.043582
7.700000	0.079052	-0.019107	7.600000	0.077740	-0.027351
7.900000	0.079198	-0.002768	7.800000	0.079532	-0.010886
8.100000	0.076191	0.012856	8.000000	0.078074	0.005170
8.300000	0.070309	0.027202	8.200000	0.073588	0.020221
8.500000	0.061919	0.039779	8.400000	0.066401	0.033739
8.700000	0.051467	0.050190	8.600000	0.056921	0.045277
8.900000	0.039453	0.058136	8.800000	0.045623	0.054486
9.100000	0.026413	0.063421	9.000000	0.033027	0.061119
9.300000	0.012896	0.065963	9.200000	0.019679	0.065036
9.500000	-0.000554	0.065784	9.400000	0.006129	0.066208
9.700000	-0.013419	0.063006	9.600000	-0.007091	0.064708
9.900000	-0.025226	0.057848	9.800000	-0.019483	0.060708
			10.000000	-0.030600	0.054466

10.100000-0.035560	0.050606	10.200000-0.040065	0.046316		
10.300000-0.044079	0.041646	10.400000-0.047575	0.036650		
10.500000-0.050526	0.031384	10.600000-0.052915	0.025903		
10.700000-0.054729	0.020267	10.800000-0.055961	0.014534		
10.900000-0.056610	0.008761	11.000000-0.056680	0.003007		
11.100000-0.056182	-0.002672	11.200000-0.055131	-0.008222		
11.300000-0.053547	-0.013590	11.400000-0.051455	-0.018728		
11.500000-0.048886	-0.023587	11.600000-0.045872	-0.028126		
11.700000-0.042452	-0.032306	11.800000-0.038665	-0.036091		
11.900000-0.034557	-0.039451	12.000000-0.030171	-0.042360		
12.100000-0.025558	-0.044796	12.200000-0.020765	-0.046745		
12.300000-0.015843	-0.048195	12.400000-0.010843	-0.049139		
12.500000-0.005816	-0.049577	12.600000-0.000810	-0.049812		
12.700000	0.004124-0.048954	12.800000	0.008939-0.047915		
12.900000	0.013589-0.046414	13.000000	0.018032-0.044472		
13.100000	0.022226-0.042116	13.200000	0.026134-0.039975		
13.300000	0.029721-0.036283	13.400000	0.032958-0.032874		
13.500000	0.035818-0.029188	13.600000	0.038277-0.025265		
13.700000	0.040318-0.021148	13.800000	0.041926-0.016879		
13.900000	0.043093-0.012504	14.000000	0.043812-0.008067		
14.100000	0.044084-0.003612	14.200000	0.043911	0.000815	
14.300000	0.043303	0.005172	14.400000	0.042271	0.009417
14.500000	0.040831	0.013508	14.600000	0.039003	0.017408
14.700000	0.036811	0.021081	14.800000	0.034281	0.024494
14.900000	0.031444	0.027616	15.000000	0.028330	0.030420
15.100000	0.024975	0.032884	15.200000	0.021416	0.034986
15.300000	0.017689	0.036712	15.400000	0.013835	0.038049
15.500000	0.009892	0.038989	15.600000	0.005902	0.039528
15.700000	0.001903	0.039665	15.800000	-0.002063	0.039404
15.900000	-0.005959	0.038754	16.000000	-0.009746	0.037725
16.100000	-0.013389	0.036333	16.200000	-0.016852	0.034595
16.300000	-0.020105	0.032534	16.400000	-0.023118	0.030173
16.500000	-0.025863	0.027540	16.600000	-0.028317	0.024664
16.700000	-0.030459	0.021576	16.800000	-0.032271	0.018310
16.900000	-0.033740	0.014901	17.000000	-0.034855	0.011383
17.100000	-0.035609	0.007792	17.200000	-0.035999	0.004166
17.300000	-0.036025	0.000541	17.400000	-0.035691	-0.003048
17.500000	-0.035006	-0.006566	17.600000	-0.033979	-0.009978
17.700000	-0.032624	-0.013251	17.800000	-0.030960	-0.016356
17.900000	-0.029005	-0.019262	18.000000	-0.026783	-0.021944
18.100000	-0.024318	-0.024377	18.200000	-0.021638	-0.026541
18.300000	-0.018772	-0.028415	18.400000	-0.015749	-0.029986
18.500000	-0.012602	-0.031241	18.600000	-0.009364	-0.032170
18.700000	-0.006067	-0.032769	18.800000	-0.002744	-0.033035
18.900000	0.000570	-0.032968	19.000000	0.003844	-0.032573
19.100000	0.007045	-0.031857	19.200000	0.010142	-0.030831
19.300000	0.013106	-0.029508	19.400000	0.015909	-0.027905
19.500000	0.018524	-0.026040	19.600000	0.020928	-0.023934
19.700000	0.023098	-0.021611	19.800000	0.025016	-0.019096
19.900000	0.026665	-0.016416	20.000000	0.028032	-0.013599

KA= 1.580000 JMAX= 28

MSTAR= 30

KD RESIJ REACIJ

KD RESIJ REACIJ

3.300000	0.020734	0.200216	3.200000	0.044765	0.202859
3.500000	-0.022617	0.187999	3.400000	-0.001751	0.195148
3.700000	-0.059268	0.168572	3.600000	-0.041805	0.179055
3.900000	-0.088889	0.143900	3.800000	-0.074970	0.156781
4.100000	-0.111348	0.115680	4.000000	-0.101015	0.130135
4.300000	-0.126706	0.085434	4.200000	-0.119903	0.100721
4.500000	-0.135208	0.054537	4.400000	-0.131792	0.069986
4.700000	-0.137270	0.024224	4.600000	-0.137012	0.039236
4.900000	-0.133461	-0.004424	4.800000	-0.136059	0.009630
5.100000	-0.124476	-0.030484	5.000000	-0.129568	-0.017829
5.300000	-0.111116	-0.053203	5.200000	-0.118290	-0.042301
5.500000	-0.094255	-0.072005	5.400000	-0.103066	-0.063122
5.700000	-0.074812	-0.086492	5.600000	-0.084797	-0.079805
5.900000	-0.053723	-0.096449	5.800000	-0.064415	-0.092044
6.100000	-0.031911	-0.101830	6.000000	-0.042851	-0.099708
6.300000	-0.010257	-0.102754	6.200000	-0.021012	-0.102835
6.500000	0.010425	-0.099489	6.400000	0.000253	-0.101623
6.700000	0.029410	-0.092434	6.600000	0.020171	-0.096406
6.900000	0.046078	-0.082099	6.800000	0.038068	-0.087641
7.100000	0.059935	-0.069081	7.000000	0.053384	-0.075886
7.300000	0.070615	-0.054036	7.200000	0.065689	-0.061769
7.500000	0.077890	-0.037660	7.400000	0.074687	-0.045971
7.700000	0.081671	-0.020654	7.600000	0.080218	-0.029192
7.900000	0.082002	-0.003709	7.800000	0.082260	-0.012132
8.100000	0.079050	0.012529	8.000000	0.080921	0.004537
8.300000	0.073098	0.027467	8.200000	0.076428	0.020194
8.500000	0.064525	0.040595	8.400000	0.069112	0.034286
8.700000	0.053789	0.051494	8.600000	0.059396	0.046346
8.900000	0.041408	0.059848	8.800000	0.047770	0.056004
9.100000	0.027936	0.065450	9.000000	0.034772	0.063001
9.300000	0.013944	0.068209	9.200000	0.020969	0.067187
9.500000	-0.000002	0.068143	9.400000	0.006931	0.068524
9.700000	-0.013363	0.065375	9.600000	-0.006788	0.067085
9.900000	-0.025647	0.060128	9.800000	-0.019669	0.063044
			10.000000	-0.031246	0.056667

10.100000-0.036420	0.052707	10.200000-0.041125	0.048297
10.300000-0.045324	0.043489	10.400000-0.048987	0.038338
10.500000-0.052088	0.032902	10.600000-0.054608	0.027240
10.700000-0.056532	0.021412	10.800000-0.057853	0.015479
10.900000-0.058570	0.009501	11.000000-0.058686	0.003537
11.100000-0.058212	-0.002353	11.200000-0.057164	-0.008113
11.300000-0.055562	-0.013689	11.400000-0.053431	-0.019028
11.500000-0.050803	-0.024084	11.600000-0.047712	-0.028810
11.700000-0.044197	-0.033166	11.800000-0.040299	-0.037115
11.900000-0.036064	-0.040625	12.000000-0.031539	-0.043670
12.100000-0.026774	-0.046227	12.200000-0.021821	-0.048279
12.300000-0.016730	-0.049814	12.400000-0.011554	-0.050826
12.500000-0.006347	-0.051313	12.600000-0.001159	-0.051279
12.700000	0.003957-0.050732	12.800000	0.008954-0.049687
12.900000	0.013783-0.048161	13.000000	0.018399-0.046177
13.100000	0.022760-0.043761	13.200000	0.026826-0.040945
13.300000	0.030563-0.037763	13.400000	0.033938-0.034251
13.500000	0.036924-0.030448	13.600000	0.039496-0.026398
13.700000	0.041635-0.022144	13.800000	0.043327-0.017730
13.900000	0.044562-0.013203	14.000000	0.045333-0.008609
14.100000	0.045640-0.003995	14.200000	0.045487 0.000594
14.300000	0.044882 0.005112	14.400000	0.043836 0.009515
14.500000	0.042367 0.013763	14.600000	0.040495 0.017814
14.700000	0.038245 0.021632	14.800000	0.035642 0.025182
14.900000	0.032719 0.028433	15.000000	0.029508 0.031356
15.100000	0.026046 0.033926	15.200000	0.022368 0.036124
15.300000	0.018516 0.037932	15.400000	0.014530 0.039338
15.500000	0.010450 0.040332	15.600000	0.006318 0.040911
15.700000	0.002176 0.041074	15.800000	-0.001935 0.040825
15.900000	-0.005975 0.040171	16.000000	-0.009904 0.039125
16.100000	-0.013685 0.037700	16.200000	-0.017283 0.035917
16.300000	-0.020663 0.033798	16.400000	-0.023796 0.031366
16.500000	-0.026654 0.028652	16.600000	-0.029210 0.025684
16.700000	-0.031444 0.022496	16.800000	-0.033338 0.019121
16.900000	-0.034876 0.015595	17.000000	-0.036048 0.011956
17.100000	-0.036846 0.008239	17.200000	-0.037267 0.004484
17.300000	-0.037311 0.000728	17.400000	-0.036983-0.002992
17.500000	-0.036289-0.006639	17.600000	-0.035200-0.010179
17.700000	-0.033852-0.013577	17.800000	-0.032142-0.016801
17.900000	-0.030130-0.019821	18.000000	-0.027840-0.022609
18.100000	-0.025297-0.025141	18.200000	-0.022530-0.027394
18.300000	-0.019569-0.029349	18.400000	-0.016444-0.030990
18.500000	-0.013190-0.032304	18.600000	-0.009839-0.033281
18.700000	-0.006425-0.033916	18.800000	-0.002984-0.034205
18.900000	0.000450-0.034150	19.000000	0.003843-0.033755
19.100000	0.007163-0.033027	19.200000	0.010376-0.031977
19.300000	0.013452-0.030619	19.400000	0.016362-0.028970
19.500000	0.019079-0.027048	19.600000	0.021578-0.024876
19.700000	0.023836-0.022479	19.800000	0.025833-0.019881
19.900000	0.027553-0.017111	20.000000	0.028980-0.014198

DISTRIBUTION LIST

Internal

USL Code 100	(Copy #1)
101	(" #2)
900	(" #3)
900C	(" #4)
960 (2)	(" #5-#6)
960S	(" #7)
961	(" #8)
902	(" #9)
904.2 (5)	(" #10-#14)
D. T. Porter (2)	(" #15-#16)
N. T. Chin	(" #17)
H. L. Rathbun	(" #18)
W. J. Marshall	(" #19)

External

Ernst Prasse (Raytheon)	(" #20)
David Lower (GE/HMED)	(" #21)
V. [unclear] (NSA)	(" #22)
J. [unclear] (NSA)	(" #23)
L. [unclear] (NSA)	(" #24)
S. [unclear] (NSA)	(" #25)
G. [unclear] (NSA)	(" #26)
C. [unclear] (NSA)	(" #27)

RETURN TO LIBRARY