

AD-A074 878

AIR FORCE GEOPHYSICS LAB HANSCOM AFB MA  
ATS-5 AND ATS-6 POTENTIALS DURING ECLIPSE. (U)  
SEP 79 A G RUBIN, H B GARRETT

F/6 22/1

UNCLASSIFIED

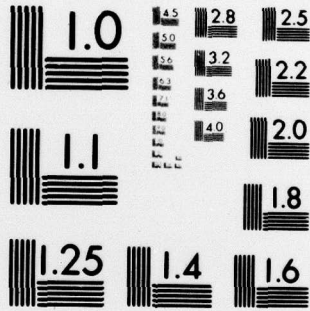
AFOL-TR-79-0218

NL

| OF |  
AD  
A074878



END  
DATE  
FILMED  
11-79  
DDC



MICROCOPY RESOLUTION TEST CHART  
NATIONAL BUREAU OF STANDARDS-1963-A

REPORT DOCUMENTATION PAGE		READ INSTRUCTIONS BEFORE COMPLETING FORM
1. REPORT NUMBER <b>14</b> AFGL-TR-79-0218	2. GOVT ACCESSION NO.	3. RECIPIENT'S CATALOG NUMBER DPS
4. TITLE (and Subtitle) <b>6</b> <u>ATS-5 AND ATS-6 POTENTIALS DURING ECLIPSE.</u>		5. TYPE OF REPORT & PERIOD COVERED Scientific. Interim.
7. AUTHOR(s) <b>10</b> Allen G./Rubin Henry B./Garrett		6. PERFORMING ORG. REPORT NUMBER
9. PERFORMING ORGANIZATION NAME AND ADDRESS Air Force Geophysics Laboratory (PHG) Hanscom AFB Massachusetts 01731 409 578		8. CONTRACT OR GRANT NUMBER(s) <b>LEVEL</b>
11. CONTROLLING OFFICE NAME AND ADDRESS Air Force Geophysics Laboratory (PHG) Hanscom AFB Massachusetts 01731		10. PROGRAM ELEMENT, PROJECT, TASK AREA & WORK UNIT NUMBER <b>10</b> 62-1011 76610701 <b>17</b> 077
12. REPORT DATE 27 September 1979		13. NUMBER OF PAGES 9
14. MONITORING AGENCY NAME & ADDRESS (if different from Controlling Office) <b>12</b> 112		15. SECURITY CLASS. (of this report) Unclassified
15a. DECLASSIFICATION/DOWNGRADING SCHEDULE		
16. DISTRIBUTION STATEMENT (of this Report) Approved for public release; distribution unlimited.		
17. DISTRIBUTION STATEMENT (of the abstract entered in Block 20, if different from Report) <b>9</b> Scientific interim rept.,		
18. SUPPLEMENTARY NOTES Published in NASA Conference Publ. 2071, AFGL-TR-79-0082, 1979		
19. KEY WORDS (Continue on reverse side if necessary and identify by block number) Spacecraft charging Experimental data ATS-5 ATS-6		
20. ABSTRACT (Continue on reverse side if necessary and identify by block number) ATS-5 and ATS-6 data for spacecraft charging during eclipse conditions is analyzed. ATS-5 and ATS-6 charged to voltages greater than 100 volts for about 55% of the eclipse periods examined. The mean spacecraft potential during eclipse was 2 keV for ATS-5, and the highest potential measured was 10 kilovolts. For ATS-6, the mean potential during eclipse was 4 keV, the highest potential measured being 20 keV. The average measured spacecraft potentials for both ATS-5 and 6 depend approximately linearly upon $K_p$ . This		

AD A 074878

DDC FILE COPY

DDC  
OCT 11 1979  
A

409 578

next page  
Sub p  
slk

Unclassified

SECURITY CLASSIFICATION OF THIS PAGE(When Data Entered)

relationship is due mainly to the dependence of electron current density on  $K_p$  near midnight. Spacecraft potentials at geosynchronous orbit may, to a rough approximation, thus be inferred from ground-based measurements of  $K_p$ , the planetary 3-hour index.

sub p

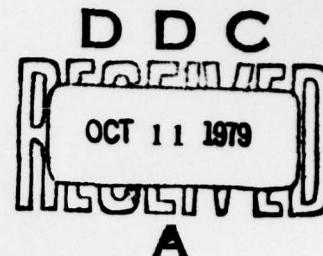
Accession For	
NTIS GRA&I	<input checked="" type="checkbox"/>
DDC TAB	<input type="checkbox"/>
Unannounced	<input type="checkbox"/>
Justification	
By _____	
Distribution/	
Availability Codes	
Dist.	Avail and/or special
A	

Unclassified

SECURITY CLASSIFICATION OF THIS PAGE(When Data Entered)

## ATS-5 AND ATS-6 POTENTIALS DURING ECLIPSE

Allen G. Rubin and Henry B. Garrett  
Air Force Geophysics Laboratory



## SUMMARY

ATS-5 and ATS-6 data for spacecraft charging during eclipse conditions is analyzed. ATS-5 and ATS-6 charged to voltages greater than 100 volts for about 55% of the eclipse periods examined. The mean spacecraft potential during eclipse was 2 keV for ATS-5, and the highest potential measured was 10 kilovolts. For ATS-6, the mean potential during eclipse was 4 keV, the highest potential measured being 20 keV. The average measured spacecraft potentials for both ATS-5 and 6 depend approximately linearly upon  $K_p$ . This relationship is due mainly to the dependence of electron current density on  $K_p$  near midnight. Spacecraft potentials at geosynchronous orbit may, to a rough approximation, thus be inferred from ground-based measurements of  $K_p$ , the planetary 3-hour index.

## INTRODUCTION

As the ATS-5 and ATS-6 spacecraft have been monitoring the plasma environment at synchronous orbit since 1969, the data provided by these satellites comprises the most extensive data base available of low-energy plasma conditions at geosynchronous orbit.

The present paper is a study of the statistics of charging events based on data from 157 eclipses from ATS-5 and 40 eclipses from ATS-6.

## THE DISTRIBUTION OF CHARGING POTENTIALS

For these eclipse charging events, ten minute averages of the charging potentials were obtained. Figure 1 shows the distribution of charging potentials plotted separately for ATS-5 and ATS-6.

For ATS-5, 55% exhibit charging to negative potentials greater than 110 volts and 54% of the ATS-6 charging intervals are greater than 100 volts. This means that both ATS-5 and ATS-6 charge to substantial negative voltages in more than half of the eclipse intervals. The mean charging voltage of ATS-5 is 2 kilovolts for ATS-5 and 4 kilovolts for ATS-6. The highest observed potential is 10 kilovolts for ATS-5 and 20 kilovolts for ATS-6.

Figure 2 shows the distribution of  $K_p$  and the 3-hour planetary index

for the ATS-5 and ATS-6 data time periods. ATS-6 data was taken during a more active geomagnetic period than ATS-5, so that the mean value of  $K_p$  for the ATS-6 time period is considerably higher than that for the ATS-5 time period. The higher mean charging potential for ATS-6 is no doubt due to hotter injected plasmas for the ATS-6 time period.

#### CHARGING POTENTIALS VERSUS $K_p$

Eclipse potentials versus  $K_p$  are shown in Figure 3 for eclipse events on ATS-5 and ATS-6 for  $K_p$  values up to 6. The error bars shown are the standard deviations ( $\pm 1 \sigma$ ) of the data. The spacecraft potential rises linearly with  $K_p$  within the error.

Shown on this figure as well is a theoretical curve based on a current balance calculation in which secondary emission properties of ATS-5 and 6 materials have been accounted for in an approximate manner, using an average secondary emission coefficient. This theoretical curve is given by

$$qV_o = T_e \ln \left( \frac{J_e}{10 J_i} \right)$$

where the factor 10 takes account of secondary emission properties (Garrett and Rubin, 1978).

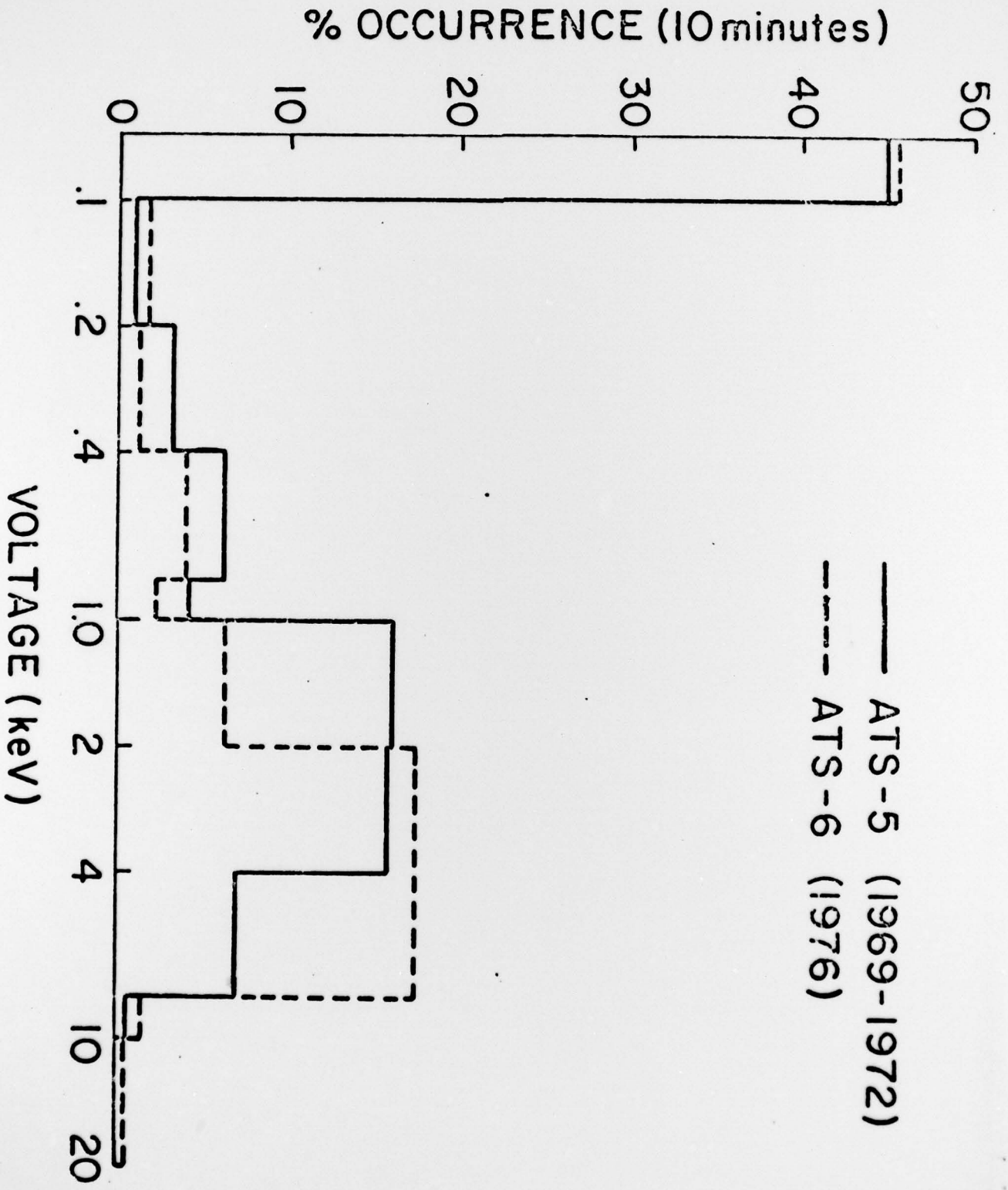
R.M.S. electron temperature as a function of  $K_p$  is shown in Figure 4 for the time period 2100-300. The electron mean temperature varies from 2 to 4 keV. The variation of the ratio of electron to ion current densities with  $K_p$  is much greater, as shown in Figure 5. The theoretical prediction of spacecraft potential, as the product of  $T_e$  and  $\ln (J_e/10 J_i)$ , shows that it is the dependence of the ratio of electron to ion current densities on the magnetic activity index,  $K_p$ , which is responsible for the strong dependence of charging potential on  $K_p$ . The mean R.M.S. electron temperature at a given  $K_p$  for the 2100-0300 time period, for the entire ATS-5 and ATS-6 data base, was employed for this calculation. The theoretical curve corresponds very well to observed potentials for  $K_p$  values up to 4, but is somewhat higher at larger  $K_p$  values.

The spacecraft potential is shown to be proportional to  $K_p$  for the 6-hour period around midnight.  $K_p$  is an easily accessible quantity, having long been used as an indicator of geomagnetic activity. Since  $K_p$  is calculated from ground-based magnetometer systems, it will be useful, to the accuracy of the error bars, as an indicator of the maximum potentials, to be expected on a shadowed spacecraft surface at geosynchronous orbit. As ATS-5 and ATS-6 have radically different shapes, this result could be applicable for a variety of satellites (see Purvis et al., 1977, for a comparison between ATS-5 and ATS-6 potentials in eclipse).

## REFERENCES

1. Garrett, H.B. and A.G. Rubin (1978): Spacecraft Charging at Geosynchronous Orbit-Generalized Solution for Eclipse Passage, Geophysical Res. Lett. (to be published).
2. Purvis, C.K., R.O. Bartlett, and S.E. DeForest: Active Control of Spacecraft Charging on ATS-5 and ATS-6, Proceedings of the Spacecraft Charging Technology Conference, edited by C.P. Pike and R.H. Lovell, AFGL-TR-770051/NASA TM 7350, p. 107-120 (1977).

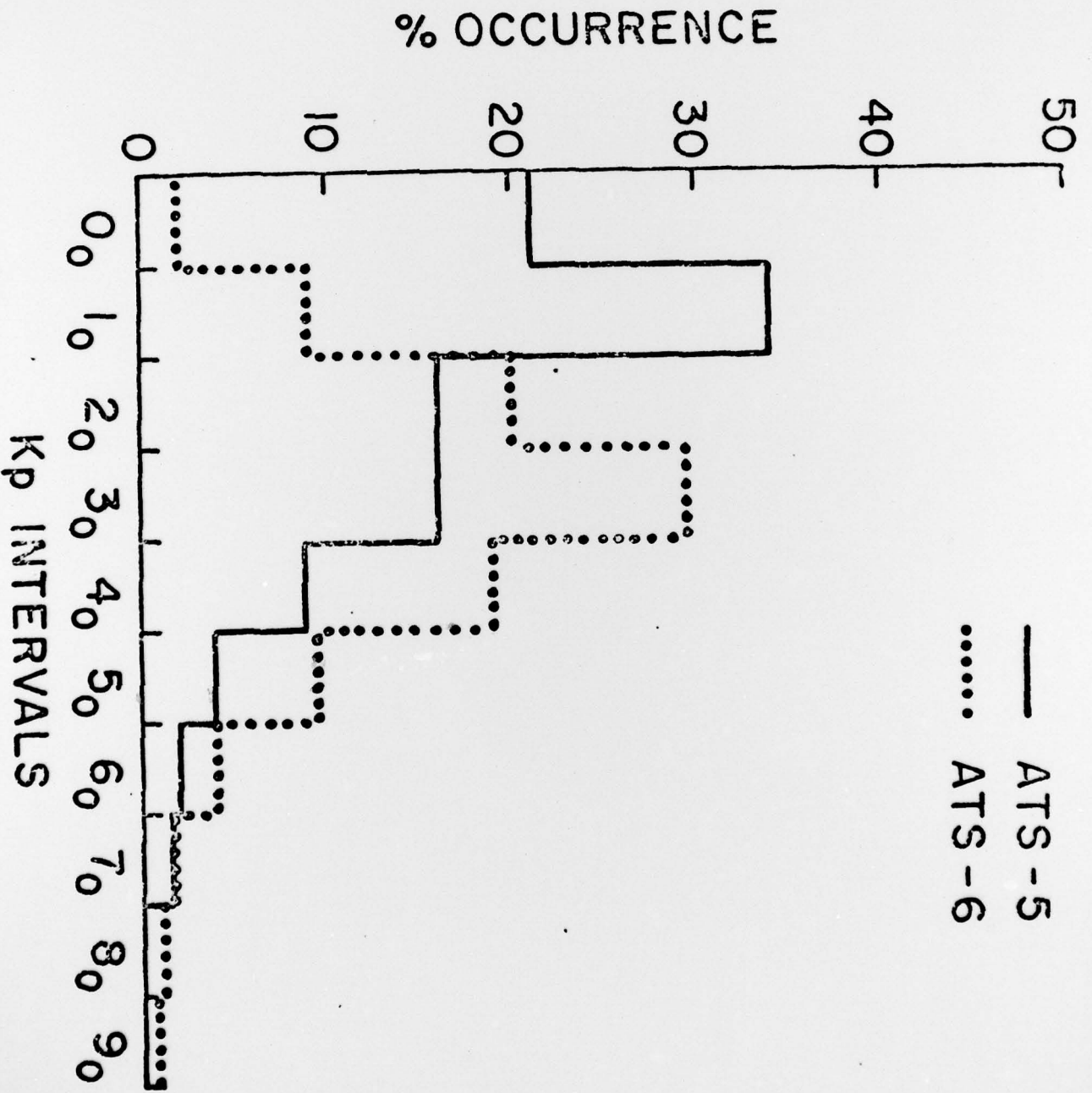
- Figure 1. The occurrence frequency of charging potentials on ATS-5 and ATS-6.
- Figure 2. The occurrence frequency of  $K_p$  for ATS-5 and ATS-6 time periods.
- Figure 3. Average eclipse potentials of ATS-5 and ATS-6 versus  $K_p$ .
- Figure 4. Mean R.M.S. electron temperature versus  $K_p$  for eclipses.
- Figure 5. Ratio of average electron to ion current densities versus  $K_p$  for eclipses.



% OCCURRENCE (10 minutes)

— ATS-5 (1969-1972)  
 - - - ATS-6 (1976)

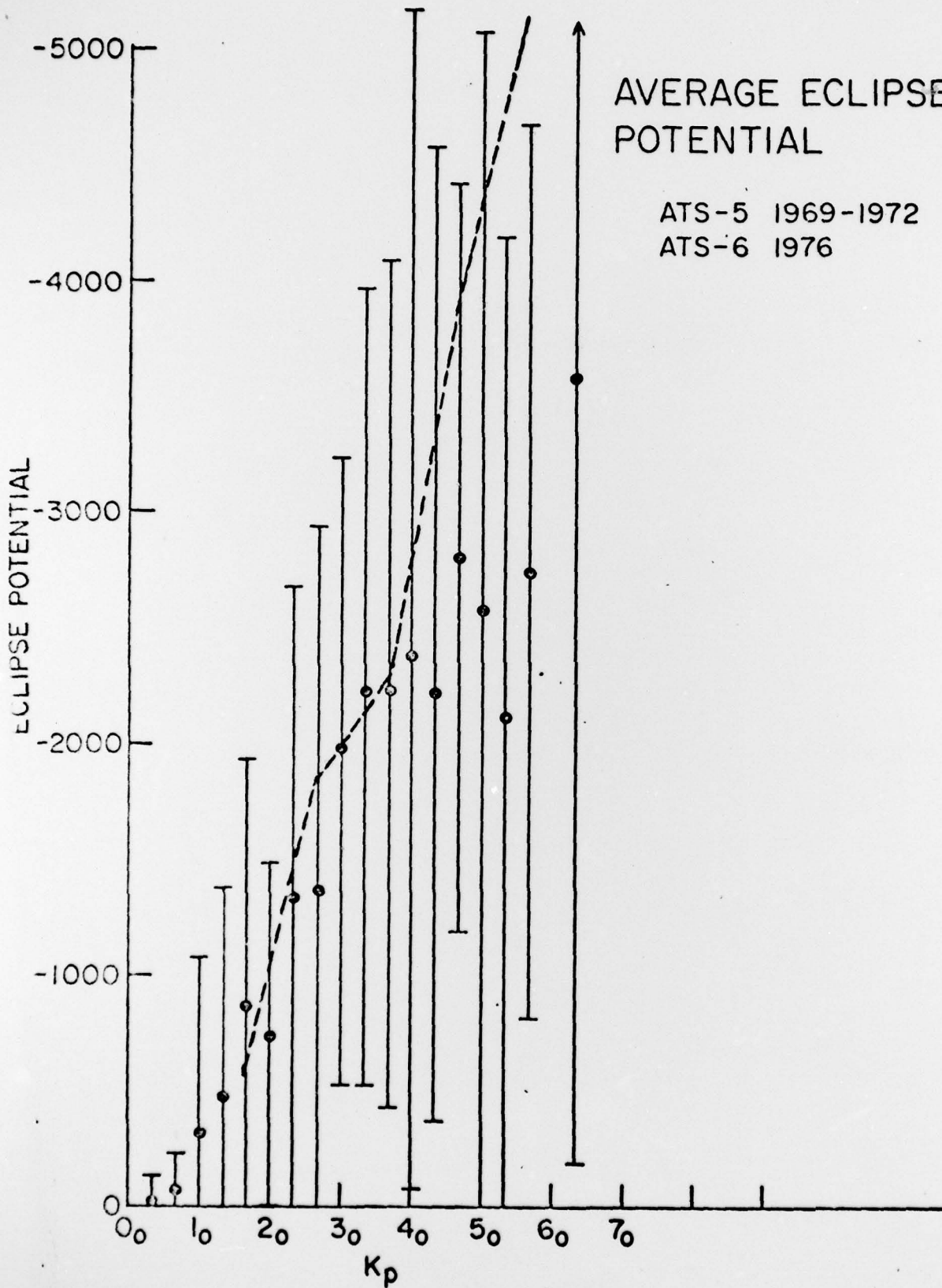
VOLTAGE (kev)



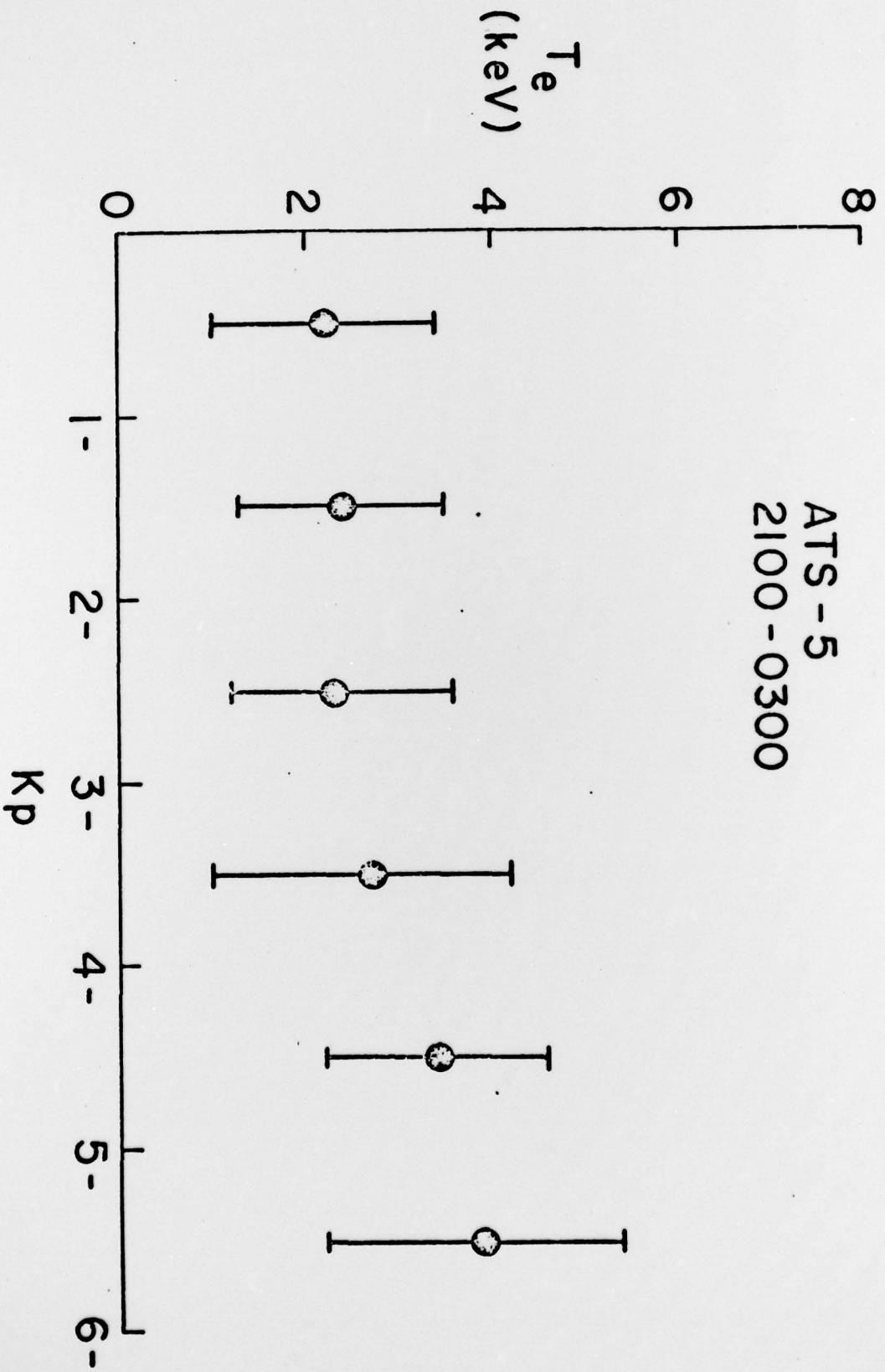
# AVERAGE ECLIPSE POTENTIAL

ATS-5 1969-1972

ATS-6 1976



ATS-5  
2100-0300



ATS-5  
2100-0300

$$\frac{J_e}{10J_i}$$

