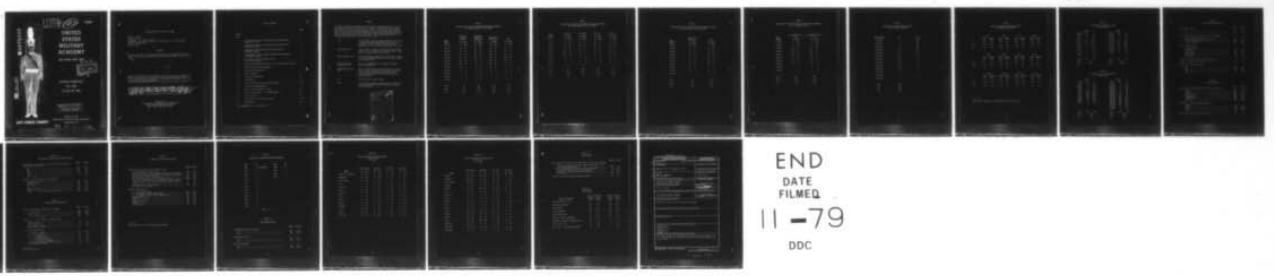


AD-A075 452 MILITARY ACADEMY WEST POINT NY OFFICE OF THE DIRECTO--ETC F/6 5/9  
CHARACTERISTICS OF THE CLASS OF 1983, (U)

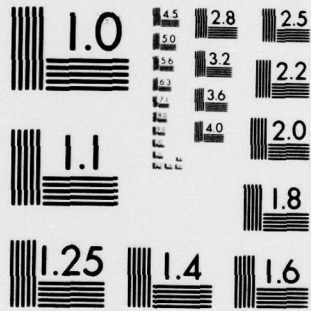
UNCLASSIFIED 79-013 SEP 79 J W HOUSTON

NL

| OF |  
AD  
A075452



END  
DATE  
FILMED  
11-79  
DDC



MICROCOPY RESOLUTION TEST CHART  
NATIONAL BUREAU OF STANDARDS-1963-A

LEVEL

42

79-013

AD A 0 7 5 4 5 2



UNITED STATES MILITARY ACADEMY

WEST POINT, NEW YORK

DDC  
RECEIVED  
OCT 24 1979  
E

See 1473 in back

DDC FILE COPY

CHARACTERISTICS OF THE CLASS OF 1983

DISTRIBUTION STATEMENT A  
Approved for public release;  
Distribution Unlimited

DUTY-HONOR-COUNTRY

OFFICE OF THE DIRECTOR OF INSTITUTIONAL RESEARCH  
SEPTEMBER 1979

79 10 24 015

CHARACTERISTICS OF THE CLASS OF 1983

Report No. 79-013  
Project No. 309  
Prepared by: Mr. John W. Houston  
Programmers: Mrs. Jackie Pittard, Mr. Kieth Laube, & Ms. Beverly English  
Typist: Susan Griffiths  
September 1979

ABSTRACT

↙  
This report presents the biographical characteristics and achievements of the 1,398 new cadets who entered the United States Military Academy in the Class of 1983.  
↘

-A-

NOTE: Any conclusions in this report are not to be construed as official U.S. Military Academy or Department of the Army positions unless so designated by other authorized documents.

DISTRIBUTION: This document is prepared for official purposes only. Its contents may not be reproduced or distributed (in whole or in part) without specific permission of the Superintendent, U.S. Military Academy, in each instance.

✓  
OFFICE OF  
THE DIRECTOR OF INSTITUTIONAL RESEARCH  
UNITED STATES MILITARY ACADEMY  
WEST POINT, NEW YORK 10996

TABLE OF CONTENTS

	Pages
PREFACE	1
TABLE	
1 Distribution of Scores on Academic Qualification Measures (Admitted by CEER)	2
2 Distribution of Scores on Academic Qualification Measures (Admitted by ACEER)	3
3 Distribution of High School Rank Scores and ACEER (Admitted by ACEER)	4
4 Distribution of Scores on Whole Candidate Score Components (All admitted cadets)	5
5 Distribution of Whole Candidate Scores (All admitted cadets)	6
6 Means and Standard Deviations of Scores of Male and Female Cadets	7
7 Distribution of Height and Weight	8
8 High School Characteristics	9
9 Subject Exposure	9
10 Awards and Scholarships	10
11 Scholarships	10
12 Clubs and Positions Held or Awards Obtained	11,12
13 Nominations and Appointments	12
14 Father's Military Status and Rank	13
15 Class Year of Fathers who are USMA Graduates	14
16 Sport Participation	14
17 Varsity Sport and Type Participation	15,16
18 Miscellaneous	17
REPORT DOCUMENTATION PAGE (DD Form 1473)	18

PREFACE

This report presents the biographical characteristics and achievements of the 1,398 new cadets who entered the Class of 1983. A separate report will compare selected characteristics of this class with previous classes. The admission scores listed in Table 1 are for the 992 cadets whose admission was based on the CEER, while Tables 2 and 3 are for the 406 cadets whose admission was based on American College Test scores. Tables 4 through 18 are based on all new cadets. The following abbreviations, explanations and definitions of terms apply in this report.

- CEER A statistically derived weighted composite score of two College Entrance Examination Board tests (Scholastic Aptitude Test-Verbal, Scholastic Aptitude Test-Mathematics), and a standardized high school rank score.
- High School Rank This is a score derived by converting the actual high school rank to a standard score, using a formula developed by the Educational Testing Service.
- Whole Candidate Score This is a weighted composite score of the CEER or ACEER, the Physical Aptitude Examination score and the Leadership Potential Score.
- Physical Aptitude Examination Score This is a standardized score developed to measure physical capabilities.
- Leadership Potential Score This is a score derived from the ratings of the candidate by his/her secondary school teachers and evaluations by admissions officials of his/her type of participation in athletic and other school and community activities.
- ACT American College Testing Program.
- ACEER A statistically derived weighted composite score of ACT tests and High School Rank converted to the 200-800 range of the CEER.

Accession For	
NTIS	GRA&I <input checked="" type="checkbox"/>
DDC	TAB <input type="checkbox"/>
Unannounced	
Justification	
By _____	
Distribution/	
Availability Codes	
Dist	Avail and/or special
A	

TABLE 1  
 DISTRIBUTION OF SCORES ON ACADEMIC QUALIFICATION MEASURES  
 (For those admitted by use of CEER)

Score Ranges	Scholastic Aptitude Verbal		Scholastic Aptitude Mathematics		High School Rank Score		CEER	
	N	Cum %	N	Cum %	N	Cum %	N	Cum %
750-800	6	100%	37	100%	50	100%	9	100%
700-749	36	99	126	96	48	95	34	99
650-699	87	96	217	84	135	90	115	96
600-649	171	87	287	62	148	77	311	84
550-599	237	70	205	33	184	62	290	53
500-549	252	46	93	12	204	43	182	24
450-499	153	20	27	3	113	22	46	5
400-449	47	5	0	0	51	11	5	1
350-399	3	0	0	0	47	6	0	0
300-349	0	0	0	0	4	1	0	0
250-299	0	0	0	0	7	1	0	0
200-249	0	0	0	0	1	0	0	0
Total	992		992		992		992	
Mean	560		626		562		594	
S.D.	74.2		67.3		105.1		59.1	

TABLE 2  
 DISTRIBUTION OF SCORES ON ACADEMIC QUALIFICATION MEASURES  
 (For those admitted by use of ACEER)

Score Ranges	ACT-ENG		ACT-MATH		ACT-N.S.		ACT-S.S.	
	N	Cum %	N	Cum %	N	Cum %	N	Cum %
34-36	0	100%	27	100%	11	100%	3	100%
31-33	8	100	92	93	139	97	37	99
28-30	29	98	156	71	155	63	91	90
25-27	78	91	97	32	63	25	126	67
22-24	174	72	30	8	30	9	83	36
19-21	101	29	4	1	6	2	31	16
16-18	13	4	0	0	0	0	16	8
13-15	3	1	0	0	1	0	12	4
10-12	0	0	0	0	1	0	4	1
Total	406		406		406		403	
Mean	23.20		28.87		29.11		25.33	
S.D.	3.07		3.12		3.26		4.38	

TABLE 3

DISTRIBUTION OF SCORES ON HIGH SCHOOL RANK SCORES AND ACEER  
(For those admitted by use of ACEER)

<u>Score Ranges</u>	High School Rank Score		ACEER	
	<u>N</u>	<u>Cum %</u>	<u>N</u>	<u>Cum %</u>
750-800	20	100%	0	100%
700-749	23	95	11	100
650-699	57	89	51	97
600-649	72	75	112	85
550-599	77	58	147	57
500-549	89	39	66	21
450-499	32	17	18	5
400-449	22	9	1	0
350-399	12	3	0	0
300-349	2	0	0	0
<b>Total</b>	<b>406</b>		<b>406</b>	
<b>Mean</b>	<b>572</b>		<b>592</b>	
<b>S.D.</b>	<b>98.1</b>		<b>53.8</b>	

TABLE 4  
 DISTRIBUTION OF SCORES ON WHOLE CANDIDATE SCORE COMPONENTS  
 (For all admitted cadets)

Score Ranges	Physical Aptitude (PAE)		Leadership Potential (LPS)	
	N	Cum %	N	Cum %
750-800	9	100%	4	100%
700-749	32	99	79	100
650-699	105	97	270	94
600-649	230	90	396	75
550-599	351	73	310	46
500-549	321	48	218	24
450-499	257	25	93	9
400-449	85	7	23	2
350-399	5	1	5	0
300-349	2	0	0	0
<b>Total</b>	<b>1397</b>		<b>1398</b>	
<b>Mean</b>	<b>555</b>		<b>599</b>	
<b>S.D.</b>	<b>74.0</b>		<b>68.5</b>	

TABLE 5  
 DISTRIBUTION OF WHOLE CANDIDATE SCORES  
 (For all admitted cadets)

<u>Score Ranges</u>	<u>N</u>	<u>Cum %</u>
7250-7500	0	100%
7000-7249	5	100
6750-6999	21	100
6500-6749	54	98
6250-6499	135	94
6000-6249	326	85
5750-5999	462	61
5500-5749	219	28
5250-5499	123	13
5000-5249	42	4
4750-4999	7	1
4500-4759	2	0
4250-4999	2	0
<b>Total</b>	<b>1398</b>	
<b>Mean</b>	<b>5915</b>	
<b>S.D.</b>	<b>365.1</b>	

TABLE 6  
MEANS AND STANDARD DEVIATIONS OF SCORES  
OF MALE AND FEMALE CADETS

	WCS		HSR		LPS		PAE*	
	<u>Male</u>	<u>Female</u>	<u>Male</u>	<u>Female</u>	<u>Male</u>	<u>Female</u>	<u>Male</u>	<u>Female</u>
N	1268	130	1268	130	1268	130	1267	130
Mean	5920	5866	562	595	600	593	560	506
S.D.	364	373	103	104	69	67	72	72

	ACEER		CEER		SAT-V		SAT-M	
	<u>Male</u>	<u>Female</u>	<u>Male</u>	<u>Female</u>	<u>Male</u>	<u>Female</u>	<u>Male</u>	<u>Female</u>
N	370	36	898	94	898	94	898	94
Mean	593	579	593	604	557	571	627	609
S.D.	53	58	59	58	75	70	67	65

	ACT-EN		ACT-MA		ACT-NS		ACT-SS	
	<u>Male</u>	<u>Female</u>	<u>Male</u>	<u>Female</u>	<u>Male</u>	<u>Female</u>	<u>Male</u>	<u>Female</u>
N	370	36	370	36	370	36	368	35
Mean	23.1	24.4	29.0	27.6	29.1	28.8	25.3	25.9
S.D.	3.0	3.3	3.1	3.3	3.3	2.6	4.4	4.0

\*PAE scale for females is not the same as the scale for males.

TABLE 7-1  
DISTRIBUTION OF HEIGHT AND WEIGHT  
(Female Cadets)

Height			Weight		
<u>Inches</u>	<u>No.</u>	<u>%</u>	<u>Pounds</u>	<u>No.</u>	<u>%</u>
70-71	7	5.4%	160-169	1	0.8%
68-69	19	14.6	150-159	11	8.5
66-67	36	27.7	140-149	20	15.4
64-65	39	30.0	130-139	40	30.8
62-63	17	13.1	120-129	30	23.1
60-61	7	5.4	110-119	20	15.4
58-59	2	1.6	100-109	4	3.1
56-57	1	0.7	90-99	4	3.1
54-55	2	1.6			
<b>Total</b>	<b>130</b>	<b>100</b>	<b>Total</b>	<b>130</b>	<b>100</b>
<b>Mean</b>	<b>65.21</b>		<b>Mean</b>	<b>130.18</b>	
<b>S.D.</b>	<b>2.93</b>		<b>S.D.</b>	<b>13.87</b>	

TABLE 7-2  
DISTRIBUTION OF HEIGHT AND WEIGHT  
(Male Cadets)

Height			Weight		
<u>Inches</u>	<u>No.</u>	<u>%</u>	<u>Pounds</u>	<u>No.</u>	<u>%</u>
82-83	0	0.0%	250-259	1	0.1%
80-81	0	0.0	240-249	0	0.0
78-79	4	0.3	230-239	2	0.2
76-77	24	1.9	220-229	7	0.6
74-75	112	8.9	210-219	13	1.0
72-73	304	24.1	200-209	32	2.5
70-71	354	28.1	190-199	48	3.8
68-69	300	23.8	180-189	105	8.3
66-67	127	10.1	170-179	168	13.3
64-65	31	2.5	160-169	231	18.3
62-63	4	0.3	150-159	244	19.3
60-61	2	0.2	140-149	209	16.5
			130-139	135	10.7
			120-129	51	4.0
			110-119	17	1.3
			100-109	3	0.2
<b>Total</b>	<b>1262</b>	<b>100</b>	<b>Total</b>	<b>1266</b>	<b>100</b>
<b>Mean</b>	<b>70.40</b>		<b>Mean</b>	<b>159.46</b>	
<b>S.D.</b>	<b>2.60</b>		<b>S.D.</b>	<b>20.99</b>	

TABLE 8  
HIGH SCHOOL CHARACTERISTICS

	Number	Percent
High School Graduate		
Yes.....	1397	99.9%
No.....	1	0.1
Type of High School in which Senior Year was Completed		
Did not complete senior year.....	1	0.1
Public (Include HS in foreign country).....	1201	85.9
Private (Non-Military).....	169	12.1
Private (Military).....	27	1.9
Rank in Graduating Class		
Did not graduate.....	1	0.1
Top Fifth.....	1021	73.0
Second Fifth.....	253	18.1
Third Fifth.....	102	7.3
Fourth Fifth.....	18	1.3
Bottom Fifth.....	3	0.2
Selected as Valedictorian (First in the Class).....	77	5.5
Selected as Salutatorian (Second in the Class).....	58	4.1
Number of High Schools Attended		
One.....	1110	79.4
Two.....	218	15.6
Three.....	43	3.1
Four or more.....	27	1.9

TABLE 9  
SUBJECT EXPOSURE

	Number	Percent
Studied the Following Mathematics and Science Course(s)		
Physics.....	1179	84.3%
Chemistry.....	1321	94.5
Biology.....	1314	94.0
General Science.....	1032	73.8
Trigonometry.....	1309	93.6
Solid Geometry.....	1170	83.7
Calculus.....	712	50.9
Studied the Following Foreign Language(s)		
Spanish.....	590	42.2
French.....	391	28.0
German.....	277	19.8
Other.....	204	14.6
Completed an Honor Course in Any Subject.....	877	62.7

TABLE 10  
AWARDS AND SCHOLARSHIPS

	Number	Percent
Received Following Awards		
National Honor Society.....	849	60.7%
Bausch and Lomb Science Award.....	28	2.0
American Legion Award.....	138	9.9
Boy's State or Girl's State Delegate.....	310	22.2
Other National Awards.....	352	25.2
Took the National Merit/Achievement Scholarship Examination		
No.....	797	57.0
Yes, but didn't qualify.....	389	27.8
Yes, and received commendation.....	147	10.5
Yes, was semi-finalist.....	18	1.3
Yes, was finalist.....	27	1.9
Yes, was merit scholar.....	18	1.3

TABLE 11  
SCHOLARSHIPS

	Number	Percent
Number of Academic Scholarships		
None.....	833	59.6%
One.....	277	19.8
Two or three.....	240	17.2
Four or five.....	38	2.7
Six or more.....	10	0.7
Number of Athletic Scholarships		
None.....	1265	90.5
One.....	66	4.7
Two or three.....	46	3.3
Four or five.....	14	1.0
Six or more.....	6	0.4
Received the Following Military Scholarships*		
Army ROTC Scholarship.....	253	18.1
Navy ROTC Scholarship.....	147	10.5
Air Force ROTC Scholarship.....	102	7.3
Other ROTC Scholarship.....	28	2.0

\*May be more than one.

TABLE 12-1  
CLUBS AND POSITIONS HELD OR AWARDS OBTAINED

	Number	Percent
Elected or Appointed to Following High School Positions		
President of High School Senior Class.....	77	5.5%
Senior Class Officer (Other than President).....	187	13.4
President, Student Body.....	81	5.8
President, High School Class (Other than Senior Class)....	145	10.4
President, Student Council.....	94	6.7
Participated in or Held Following High School Positions*		
Debating or Forensic Society.....	159	11.4
Thespian or Dramatic Club.....	209	14.9
Glee Club.....	101	7.2
High School Band.....	273	19.5
Staff, School Paper.....	293	21.0
Editor or Co-Editor, School Paper.....	118	8.4
Staff, Yearbook or Annual.....	231	16.5
Editor or Co-Editor, Yearbook or Annual.....	79	5.6
Was a Member of the Following Number of Clubs which were Sponsored by the High School		
None.....	74	5.3
One.....	138	9.9
Two.....	253	18.1
Three.....	282	20.2
Four.....	242	17.3
Five.....	154	11.0
Six.....	92	6.6
Seven.....	50	3.6
Eight or more.....	108	7.7
Was President, Vice-President, or Equivalent of the Following Number of Clubs which were Sponsored by High School		
None.....	741	53.0
One.....	421	30.1
Two.....	155	11.1
Three.....	62	4.4
Four.....	11	0.8
Five or more.....	8	0.6
Was a Member of the Following Number of Clubs which were Not Sponsored by High School		
None.....	454	32.5
One.....	512	36.6
Two.....	271	19.4
Three.....	89	6.4
Four.....	41	2.9
Five.....	18	1.3
Six.....	4	0.3
Seven or more.....	7	0.5

\*May be more than one.

TABLE 12-2  
CLUBS AND POSITIONS HELD OR AWARDS OBTAINED

Was President, Vice President or Equivalent of the Following Number of Non-School Clubs	Number	Percent
None.....	987	70.6%
One.....	329	23.5
Two.....	63	4.5
Three.....	14	1.0
Four.....	4	0.3
Five or more.....	1	0.1
 Presently is or Has Been One of the Following*		
Boy Scout/Girl Scout.....	761	54.4
Explorer Scout.....	145	10.4
Sea Scout.....	13	0.9
Air Scout.....	21	1.5
Camp Counselor.....	180	12.9
Order of the Arrow.....	187	13.4
Eagle Scout (Boys)/First Class Scout (Girls).....	182	13.0

TABLE 13  
NOMINATIONS AND APPOINTMENTS

	Number	Percent
Federal Academies where Nomination was Attempted*		
Naval Academy.....	484	34.6%
Air Force Academy.....	468	33.5
Coast Guard Academy.....	180	12.9
Merchant Marine Academy.....	101	7.2
 Federal Academies where Appointment was Received*		
Naval Academy.....	78	5.6
Air Force Academy.....	74	5.3
Coast Guard Academy.....	55	3.9
Merchant Marine Academy.....	38	2.7
 First Choice of Schools was:		
U.S. Military Academy.....	1125	80.5
U.S. Air Force Academy.....	133	9.5
U.S. Naval Academy.....	52	3.7
U.S. Coast Guard Academy.....	14	1.0
U.S. Merchant Marine Academy.....	6	0.4
Canadian Liberal Arts College.....	27	1.9
Civilian Engineering Technical College.....	27	1.9
Another Type of College.....	10	0.7

\*May be more than one.

TABLE 14

FATHER'S MILITARY STATUS AND RANK

	Number	Percent
<b>Father's Past Military Service and Current Status</b>		
No Military Service or Don't Know.....	407	29.1%
Career in Military Service Terminated for Physical Disability....	38	2.7
Not in Reserve Status, Served Two or More Tours on Active Duty...	134	9.6
Served 20 Years or More and Retired.....	172	12.3
Served Only During a War or for One Peacetime Tour.....	428	30.6
Now on Full Time Active Duty, in a Regular or Reserve Component..	138	9.9
Inactive Reserve Status, Served Two or More Tours on Active Duty.....	46	3.3
Now in Reserves or National Guard.....	28	2.0
Died While on Active Duty.....	6	0.4
<b>Father's Highest Grade**</b>		
E1 - E3 (Private or PFC).....	187	13.4
E4 - E6 (Corporal through Staff Sergeant).....	288	20.6
E7 - E9 (Platoon Sergeant through Sergeant Major).....	154	11.0
Warrant Officer.....	22	1.6
Lieutenant or Captain.....	82	5.9
Major.....	38	2.7
Lieutenant Colonel.....	113	8.1
Colonel.....	74	5.3
General Officer.....	10	0.7

---

\*\*Army Grade or AF, Navy & Marine Corps equivalent.

TABLE 15  
CLASS YEAR OF FATHERS WHO ARE USMA GRADUATES

<u>Year</u>	<u>No.</u>	<u>Year</u>	<u>No.</u>
1965	1 (stepfather)	1949	4
1962	1	1948	3
1960	6	1946	2
1959	8	1942	1
1958	7		
1957	6		
1956	6		
1955	4		
1954	3		
1953	2		
1952	3		
1951	1		
1950	1		

Total 59

TABLE 16  
SPORT PARTICIPATION

	Number	Percent
<b>Participated in Varsity Athletics</b>		
Yes.....	1255	89.8%
No.....	143	10.2
<b>Earned Varsity Letter</b>		
Yes.....	1151	82.3
No.....	247	17.7
<b>Varsity Team Captain</b>		
Yes.....	629	45.0
No.....	769	55.0

TABLE 17-1  
 VARSITY SPORT AND TYPE PARTICIPATION  
 (Female Cadets)  
 N = 130

Sport	Participants		Captains		All-Conf		All-State	
	N	%	N	%	N	%	N	%
Baseball or Softball	20	15.4%	8	6.2%	5	3.8%	1	0.8%
Basketball	54	41.5	18	13.8	8	6.2	0	0.0
Cross Country	20	15.4	4	3.1	4	3.1	1	0.8
Golf	1	0.8	1	0.8	0	0.0	0	0.0
Gymnastics	11	8.5	4	3.1	1	0.8	0	0.0
Hockey	13	10.0	5	3.8	3	2.3	0	0.0
Lacrosse	4	3.1	0	0.0	0	0.0	0	0.0
Rifle	2	1.5	0	0.0	0	0.0	0	0.0
Skiing	4	3.1	2	1.5	0	0.0	1	0.8
Soccer	12	9.2	6	4.6	3	2.3	0	0.0
Swimming	13	10.0	8	6.2	4	3.1	3	2.3
Tennis	18	13.8	5	3.8	2	1.5	0	0.0
Track	62	47.7	16	12.3	12	9.2	5	3.8
Volleyball	36	27.7	13	10.0	5	3.8	0	0.0

TABLE 17-2

VARSIY SPORT AND TYPE PARTICIPATION  
(Male Cadets)

N = 1268

Sport	Participants		Captains		All-Conf		All-State	
	N	%	N	%	N	%	N	%
Baseball	242	19.1%	49	3.9%	46	3.6%	3	0.2%
Basketball	264	20.8	64	5.0	32	2.5	7	0.6
Cross Country	247	19.5	71	5.6	27	2.1	7	0.6
Fencing	9	0.7	2	0.2	0	0.0	0	0.0
Football	544	42.9	156	12.3	150	11.8	24	1.9
Golf	53	4.2	12	0.9	4	0.3	1	0.1
Gymnastics	24	1.9	7	0.6	9	0.7	2	0.2
Hockey	30	2.4	10	0.8	11	0.9	1	0.1
Lacrosse	54	4.3	18	1.4	11	0.9	2	0.2
Rifle	54	4.3	15	1.2	4	0.3	2	0.2
Skiing	13	1.0	1	0.1	0	0.0	0	0.0
Soccer	162	12.8	49	3.9	23	1.8	9	0.7
Swimming	86	6.8	28	2.2	15	1.2	9	0.7
Tennis	117	9.2	28	2.2	11	0.9	2	0.2
Track	492	38.8	109	8.6	74	5.8	29	2.3
Water Polo	13	1.0	4	0.3	0	0.0	0	0.0
Wrestling	252	19.9	87	6.9	40	3.2	11	0.9
Volleyball	22	1.7	2	0.2	0	0.0	0	0.0

TABLE 18-1  
MISCELLANEOUS

	Number	Percent
Taken College Level Courses After High School in One of the Following		
A Junior, Community, Extension or Branch College with a one or two-year program only.....	131	9.4%
Other Institution with less than a four-year program.....	28	2.0
A Four-year College, not part of a University.....	42	3.0
A University, including its separate Colleges.....	78	5.6
Not Applicable.....	1110	79.4
Attended U.S. Military Academy Preparatory School.....	207	14.8

TABLE 18-2  
MISCELLANEOUS

<u>Parents' Education</u>	<u>Father's Education</u>		<u>Mother's Education</u>	
	<u>Number</u>	<u>Percent</u>	<u>Number</u>	<u>Percen</u>
Some High School or Less	98	7.0%	91	6.5%
High School Graduate	301	21.5	507	36.3
Some College	270	19.3	320	22.9
College Graduate	284	20.3	288	20.6
Some Graduate Work	77	5.5	64	4.6
Master's Degree or Equivalent	246	17.6	95	6.8
Bachelor of Divinity, Bachelor of Law	18	1.3	3	0.2
Ph.D., Ed.D., J.D.	53	3.8	7	0.5
M.D., D.D.S., or Other Professional	42	3.0	8	0.6

UNCLASSIFIED

SECURITY CLASSIFICATION OF THIS PAGE (When Data Entered)

REPORT DOCUMENTATION PAGE		READ INSTRUCTIONS BEFORE COMPLETING FORM
1. REPORT NUMBER 14) 79-013	2. GOVT ACCESSION NO.	3. RECIPIENT'S CATALOG NUMBER
6) CHARACTERISTICS OF THE CLASS OF 1983		5. TYPE OF REPORT & PERIOD COVERED
		6. PERFORMING ORG. REPORT NUMBER
7. AUTHOR(s) 10) John W. Houston	8. CONTRACT OR GRANT NUMBER(s) 12) 222	
9. PERFORMING ORGANIZATION NAME AND ADDRESS Office of the Director of Institutional Research United States Military Academy West Point, New York 10996 406 247		10. PROGRAM ELEMENT, PROJECT, TASK AREA & WORK UNIT NUMBERS Project No. 309
11. CONTROLLING OFFICE NAME AND ADDRESS Same as #9 above		12. REPORT DATE 11) Sep 1979
14. MONITORING AGENCY NAME & ADDRESS (if different from Controlling Office) United States Military Academy West Point, New York 10996		13. NUMBER OF PAGES 18 + ii
		15. SECURITY CLASS. (of this report) Unclassified
15a. DECLASSIFICATION/DOWNGRADING SCHEDULE		
16. DISTRIBUTION STATEMENT (of this Report) Approved for public release; distribution unlimited.		
17. DISTRIBUTION STATEMENT (of the abstract entered in Block 20, if different from Report)		
18. SUPPLEMENTARY NOTES		
19. KEY WORDS (Continue on reverse side if necessary and identify by block number) Achievements Admission Scores Analysis Characteristics Freshmen		
20. ABSTRACT (Continue on reverse side if necessary and identify by block number) This report presents the biographical characteristics and achievements of the 1,398 new cadets who entered the United States Military Academy in the Class of 1983.		

DD FORM 1473 1 JAN 73 EDITION OF 1 NOV 68 IS OBSOLETE

UNCLASSIFIED

SECURITY CLASSIFICATION OF THIS PAGE (When Data Entered)

18

406 247

slf