

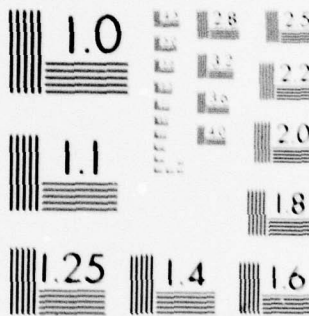
AD-A077 764 MILITARY ACADEMY WEST POINT NY OFFICE OF THE DIRECTO--ETC F/G 5/9
TRENDS IN ADMISSION VARIABLES THROUGH THE CLASS OF 1975, (U)
DEC 71 J W HOUSTON
UNCLASSIFIED 9A1.01-72-023

NL

| OF |
AD
A077764



END
DATE
FILMED
1-80
DDC



MICROCOPY RESOLUTION TEST CHART
NATIONAL BUREAU OF STANDARDS-1963-A

LEVEL #

(1)

AD A 077764



UNITED STATES MILITARY ACADEMY

WEST POINT · NEW YORK

TRENDS IN ADMISSION VARIABLES

WJC FILE COPY

DDC
RECEIVED
DEC 10 1979
RECEIVED

DISTRIBUTION STATEMENT A
Approved for public release;
Distribution Unlimited

OFFICE OF INSTITUTIONAL RESEARCH

December 1971

DUTY-HONOR-COUNTRY

79 20 9 159

6 TRENDS IN ADMISSION VARIABLES THROUGH THE CLASS OF 1975,

14 9A1.01-72-023

Report Prepared By: Mr. 10 John W. Houston

11 December 1971

12 37

NOTE: Any conclusions in this report are not to be construed as official U.S. Military Academy or Department of the Army positions unless so designated by other authorized documents.

DISTRIBUTION: This document is prepared for official purposes only. Its contents may not be reproduced or distributed (in whole or in part) without specific permission of the Superintendent, U.S. Military Academy, in each instance.

OFFICE OF INSTITUTIONAL RESEARCH
UNITED STATES MILITARY ACADEMY
WEST POINT, NEW YORK 10996

Accession For	
NTIS GRA&I	<input checked="" type="checkbox"/>
DDC TAB	<input type="checkbox"/>
Unannounced	<input type="checkbox"/>
Justification	
Distribution/	
Availability Codes	
Dist.	Avail and/or special
A	

406 247 LB

ABSTRACT

1. The United States Military Academy uses the Whole Man concept in the selection of candidates for admission. This concept encompasses three broad ability areas: scholastic, leadership potential, and physical condition and aptitude. The entrance scores for each of these areas are compared with previous classes.

2. The Class of 1975, compared to previous Classes has a slight decrease in its academic potential. The mean Leadership Potential Score is the second highest for the Class of 1975 of any Class since the Class of 1969 when the present method of calculating it was started. The mean Physical Aptitude Examination scores are slightly lower than for the Class of 1974 but nearly identical with the Class of 1973.

3. Most of the remainder of the report is devoted to presenting comparison information between the Classes of 1975 and 1974 as well as with previous Classes. Trend data for the Classes of 1966 to 1975 are presented in the appendix. An important point in interpreting the data is that the total number of candidates increased greatly for the Classes of 1974 and 1975 compared to the Classes of 1973 and before.

4. The following abbreviations are used in this report:

CEER	College Entrance Examination Scores and High School Rank Scores statistically combined.
HSR	High School Rank Score
LPS	Leadership Potential Score
PAE	Physical Aptitude Examination
SAT-V	Scholastic Aptitude Test - Verbal
SAT-M	Scholastic Aptitude Test - Mathematics
WMS	Whole Man Score
ASR	Aptitude for the Service Ratings

PREFACE

This report, along with the report, Characteristics of the Class of 1975, published in September 1971, and the report, A Comparison of New Cadets at USMA with Entering Freshmen at Other Colleges Class of 1975, to be published when data becomes available, comprise the general reports prepared by the Office of Institutional Research to describe the Class of 1975 at the time members of the Class entered the Academy.

The same three reports were prepared for the Classes of 1971, 1972, 1973 and 1974. (For 1971 this report was called Analysis of the Characteristics of the Class of 1971, and for the Classes of 1972 and 1973 it was called Background and Predicted Success of Cadets in the Class of --- with Comparison with Previous Classes.) Similar reports are planned on each future class when it enters the Academy.

TABLE OF CONTENTS

	Page
Abstract	i
Preface	ii
I PERFORMANCE MEASURES	1
II HONORS AND AWARDS	24
III PARTICIPATION AND ATTAINMENTS IN HIGH SCHOOL ATHLETICS	24
IV HIGH SCHOOL BACKGROUND	24
V NON-ATHLETIC ACTIVITIES DURING HIGH SCHOOL	25
VI MILITARY EXPERIENCE OR SERVICE	26
VII PARENTS' MILITARY BACKGROUND	26
VIII COLLEGE BACKGROUND	26
IX TRENDS ON SELECTED CHARACTERISTICS	27
X SUMMARY	27
Selected References	30

I. PERFORMANCE MEASURES

1. Academic Qualifications:

a. With relation to the College Entrance Examination Board scores, the Class of '75 compared to the Class of '74 in their mean scores as follows:

	<u>'75</u>	<u>'74</u>
Scholastic Aptitude Test - Verbal	554	564
Scholastic Aptitude Test - Mathematics	622	634
English Composition	543	550
Mathematics Achievement	614	628
High School Rank Score	553	550

b. The differences in scores for the first four items are statistically significant.*

c. Comparisons with available data aid in interpreting the level of these scores. The mean cadet score for the Class of '75 on SAT-V is higher than that of 80% of a representative sample of male secondary school seniors; and higher than 71% of those who were accepted by colleges. The mean cadet score on SAT-M was higher than that of 83% of the secondary seniors; and higher than 77% of those who were accepted by colleges.

2. Potential for Success at USMA. There are several measures which have been found to be related to academic, physical and leadership success at USMA:

a. General potential for academic success. Each candidate is evaluated on his academic potential to succeed at USMA. No candidate is admitted unless there is a reasonable assurance that he will be able to graduate. The prime academic potential measure is the CEER score which, for the Class of 1973 has a correlation coefficient of .67 with end of fourth class academic average. The average CEER score for the Class of 1975 is 582.

*Statistical significance referred to in this report is at the .05 level.

Using the formula derived on the Class of 1973*, the expected Fourth Class year academic average for a cadet in the Class of 1975 with a CEER score of 582 is 2.386.

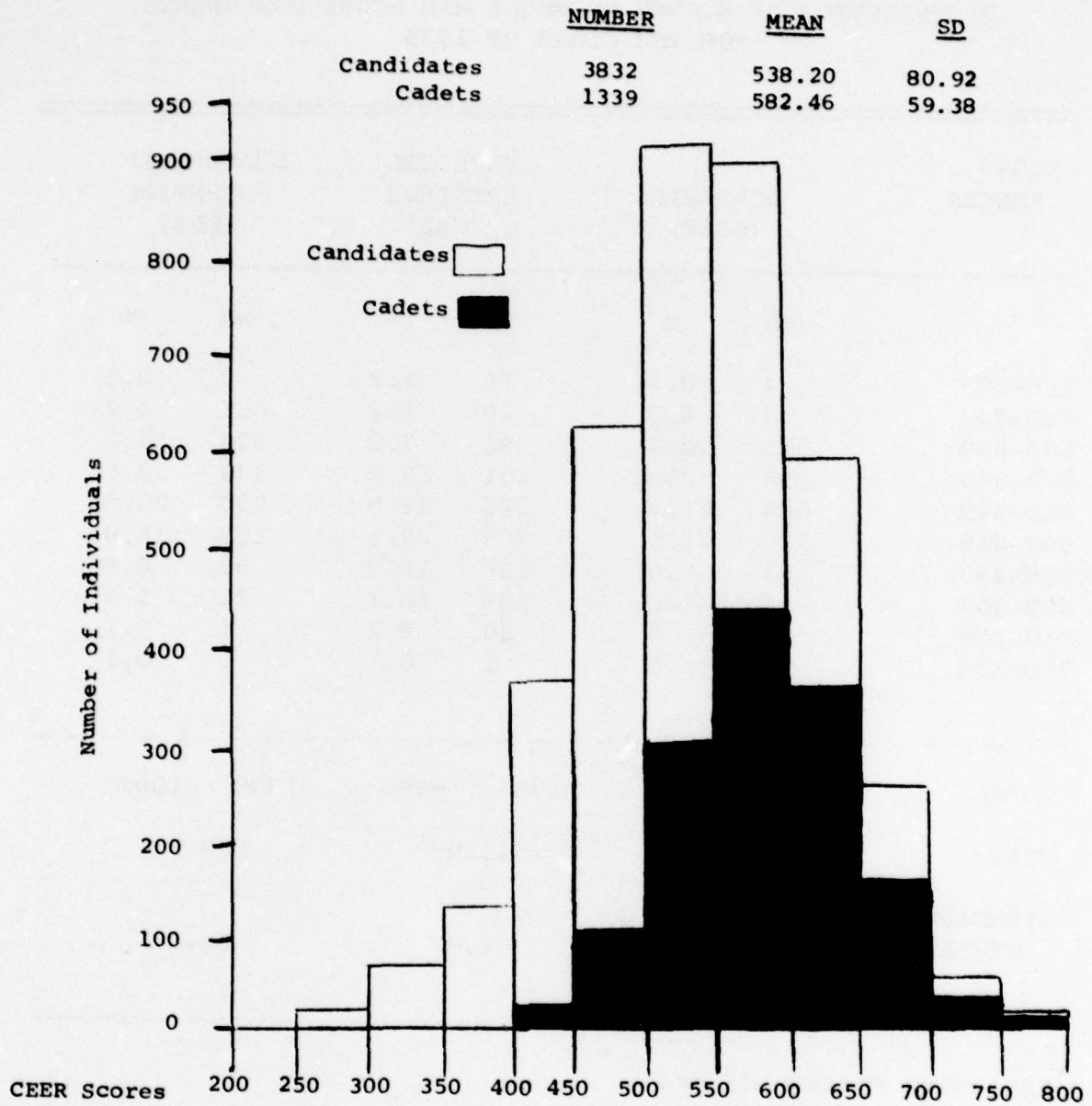
(1) Those cadets who have low CEER scores can be expected to have more difficulty in their academic work than those cadets who have high CEER scores.

(2) Figure 1 provides a graphic comparison of the number of cadets within each CEER range, as shown in Table 1, with the number of completely examined candidates within the same ranges. Inspection of Figure 1 shows that although candidates with low CEER scores were not admitted, all the top scores on the CEER were not admitted either. Obviously other factors, such as decliners to USMA with high scores, played a significant role.

b. General potential for physical activities. The average Physical Aptitude Examination score of 546 is not significantly different from the average of 553 made by the entering Class of 1974 and compares with the mean of 547 made by the Class of 1973. The number of entering cadets with PAE scores below 450, as reported in Table 1, increased from 138 last year to 166 this year. A graphic comparison of the distribution of PAE scores in the Class of 1975 with that in the candidate population from which it was drawn is provided by Figure 2.

c. Leadership potential. The Leadership Potential Scores are derived from the ratings of the candidate by his secondary school teachers, and evaluations by Admissions Officials of his quality of participation in athletic and other school and community activities. The LPS and PAE are currently the best predictors of Aptitude for the Service Rating. The mean LPS for this Class (608) is not significantly different from the mean of the Class of 1974 (609). A graphic comparison of the distribution of Leadership Potential Scores in this Class with that in the candidate population is provided in Figure 3. In general, the higher a candidate's LPS the higher the probability is that he will come to USMA.

* Academic Average = $0.00163 (\text{CEER}) + 1.43637$;
Standard error of estimate = 0.10.



No Candidates	0	7	58	129	353	618	906	869	582	251	50	9
% entered	0	0	0	0	3.7	15.0	31.8	48.8	58.2	57.8	66.0	44.4
No. Cadets	0	0	0	0	13	93	288	424	339	145	33	4

Figure 1. Comparison of the Number of Cadets with the Number of Fully Examined Candidates at each CEER Score Level for the Class of 1975.

TABLE 1

DISTRIBUTION OF SCORES ON WHOLE MAN SCORE COMPONENTS*
FOR THE CLASS OF 1975

SCORE RANGES	ACADEMIC (CEER)		PHYSICAL APTITUDE (PAE)		LEADERSHIP POTENTIAL (LPS)	
	No	%	No	%	No	%
750-800	4	0.3	16	1.2	2	0.1
700-749	33	2.5	29	2.2	56	4.2
650-699	145	10.8	96	7.2	324	24.2
600-649	339	25.3	201	15.0	436	32.6
550-599	424	31.7	294	22.0	280	20.9
500-549	288	21.5	308	23.1	159	11.9
450-499	93	6.9	226	16.9	59	4.4
400-449	13	1.0	135	10.1	21	1.6
350-399	0	0	30	2.2	1	0.1
300-349	0	0	1	0.1	1	0.1
<hr style="border-top: 1px dashed black;"/>						
TOTAL	1339	100%	1336	100%	1339	100%
MEAN	582.46		545.99		608.31	
STANDARD DEVIATION	59.38		81.47		64.51	

*Including Foreign Cadets

	<u>NUMBER</u>	<u>MEAN</u>	<u>SD</u>
Candidates	3892	507.57	104.82
Cadets	1336*	545.99	81.47

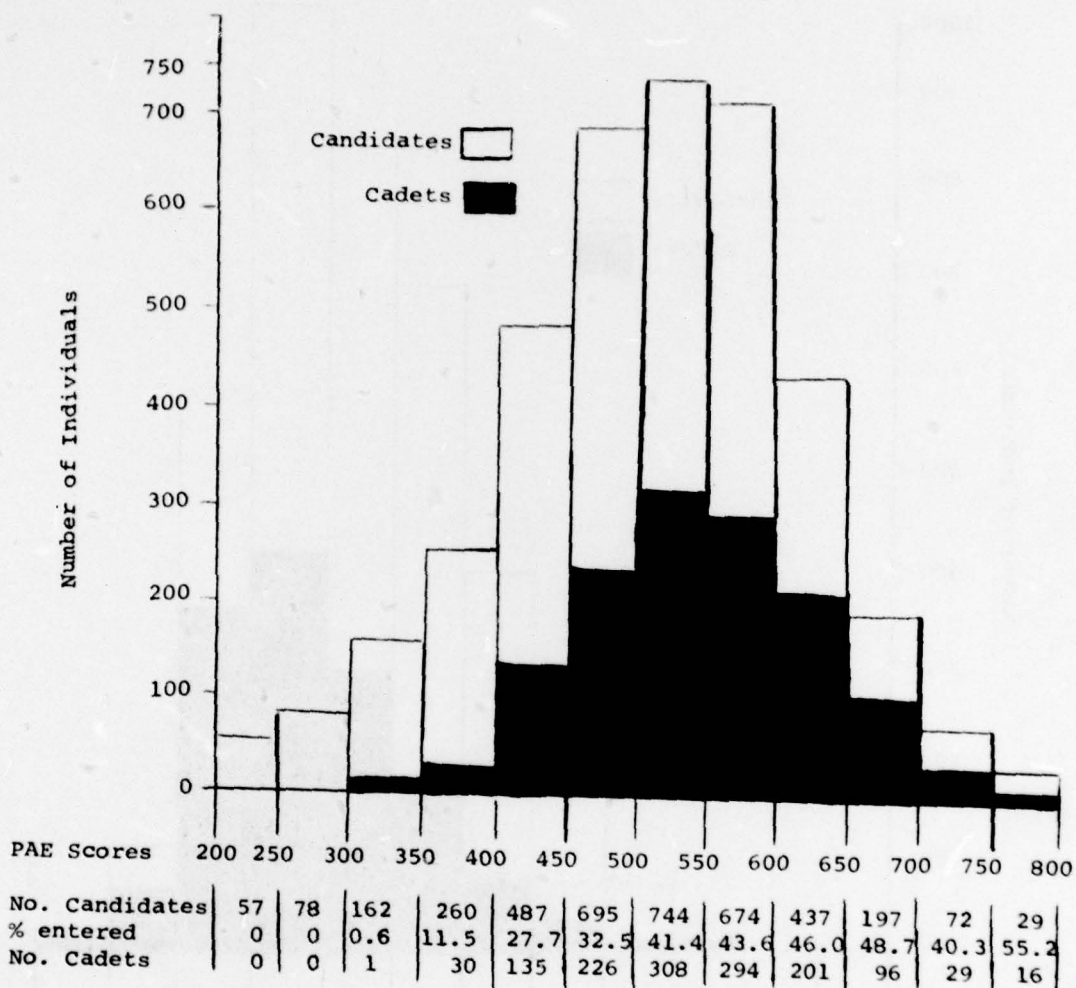


Figure 2. Comparison of the Number of Cadets with the Number of Fully Examined Candidates at each Physical Aptitude Score Level for the Class of 1975.

*Three cadets did not have PAE scores.

	<u>NUMBER</u>	<u>MEAN</u>	<u>SD</u>
Candidates	3843	573.49	78.14
Cadets	1339	608.31	64.51

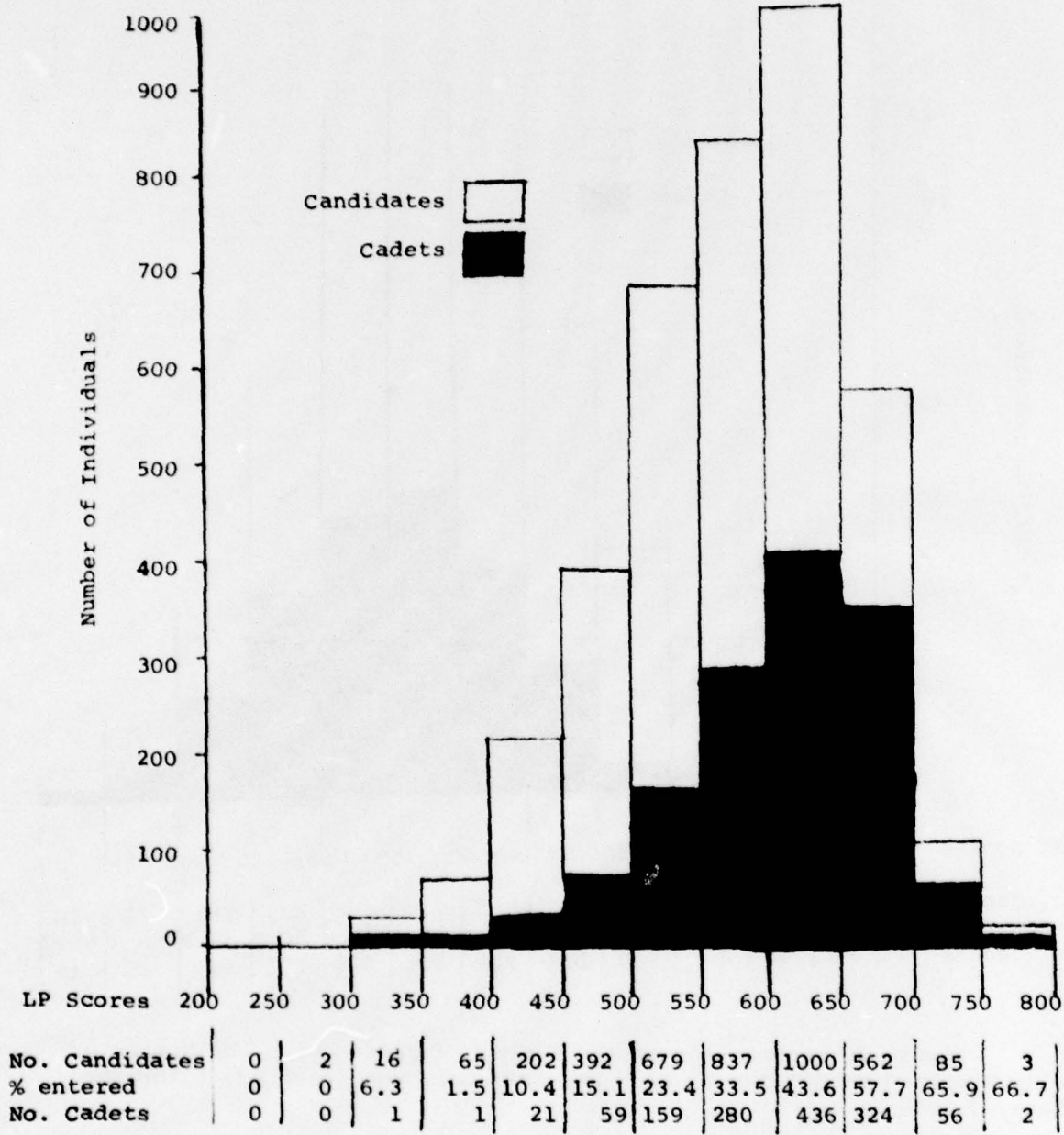


Figure 3. Comparison of the Number of Cadets with the Number of Fully Examined Candidates at each Leadership Potential Score Level for the Class of 1975.

3. Overall Appraisal of Potential for Success at USMA:

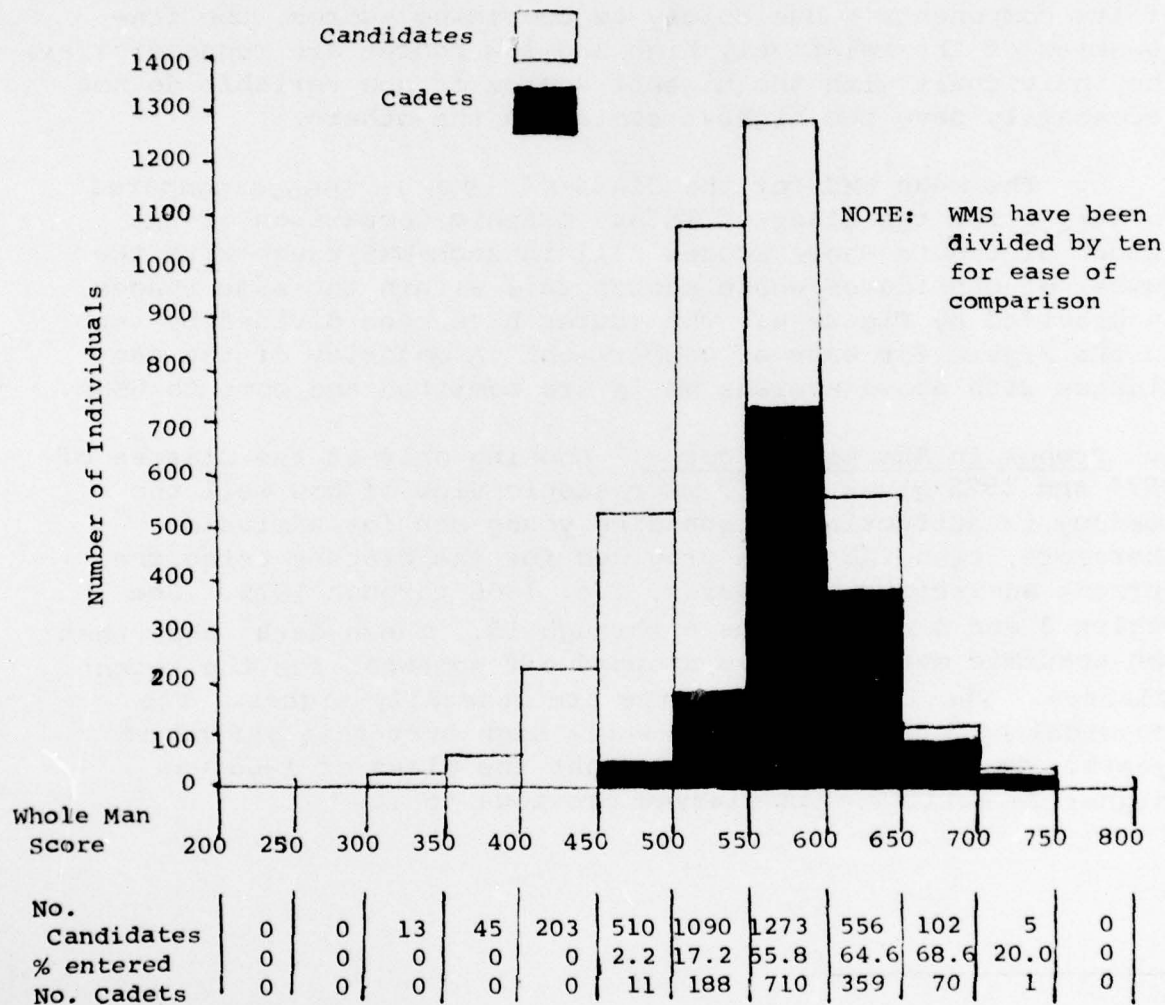
a. The Whole Man Score is a weighted score consisting of 60% CEER, 10% PAE, and 30% LPS. Table 2 shows the distribution of WMS's in the Class of '75. Moving the decimal point one place to the left converts the WMS to a scale similar to that of its components. Due solely to combining scores, the frequencies of the relatively high and low scores are reduced; i.e., the individuals with the highest scores on one variable do not necessarily have the highest scores on the others.

b. The mean WMS for the Class of 1975 is 5865.4 compared to 5911.5 for the Class of 1974. Graphic comparison of the number of cadets whose scores fall in each WMS range with the number of candidates whose scores fall within the same ranges is provided by Figure 4. The scores have been divided by ten in the Figure for ease of comparison. A majority of the candidates with above average WMS's are admitted and come to USMA.

4. Trends in Admission Scores. Looking only at the Classes of 1974 and 1975 gives a very microscopic view of how well the Academy is attracting outstanding young men for admission. Therefore, trend data are provided for the classes using the current admissions procedures, i.e. 1965 through 1975. See Tables 3 and 4 and Figures 5 through 13. These data* show that the academic measures have dropped off somewhat for the recent Classes. The leadership scores are generally higher. The Physical Aptitude scores are still high over this period of years. There is some evidence that the Class of 1965 was higher in ability than classes previous to it.

* The data on the CEER and PAE for the Class of 1965 and for the High School Rank Score for the Classes of 1965 through 1968 come from the Basic Candidate Data Decks. The data for the CEER and PAE on admitted candidates for the Classes of 1966 through 1968 come from the analysis by Spencer. The data for the remainder of the variables shown on these tables come from the Class Characteristics reports and from the Basic Candidate Data Decks.

	<u>NUMBER</u>	<u>MEAN</u>	<u>SD</u>
Candidates	3797	546.12	59.63
Cadets	1339	586.54	35.64



No. Candidates	0	0	13	45	203	510	1090	1273	556	102	5	0
% entered	0	0	0	0	0	2.2	17.2	55.8	64.6	68.6	20.0	0
No. Cadets	0	0	0	0	0	11	188	710	359	70	1	0

Figure 4. Comparison of the Number of Cadets with the Number of Fully Examined Candidates at each Whole Man Score Level for the Class of 1975.

TABLE 2

DISTRIBUTION OF WHOLE MAN SCORES FOR THE CLASS OF 1975

SCORE RANGES	NO	%
7500-8000	0	0
7000-7499	1	0.1
6500-6999	70	5.2
6000-6499	359	26.8
5500-5999	710	53.0
5000-5499	188	14.0
4500-5000	11	0.8

Total	1339	100
Mean	5865.4	
Standard Deviation	356.4	

TABLE 3

MEANS AND STANDARD DEVIATIONS FOR CEER, LPS, PAE AND WMS
FOR THE CLASSES OF 1966 THROUGH 1975

		CEER			LPS*			PAE			WMS*		
		N	MEAN	SD	N	MEAN	SD	N	MEAN	SD	N	MEAN	SD
1966	A**	2208	551	79				2162	504	98			
	T	1856	560	76				1856	505	98			
	M	1657	562	75				1657	508	97			
	C	802	594	61				807	543	76			
1967	A	2504	549	77				2314	498	97			
	T	2042	560	74				2042	498	98			
	M	1781	563	73				1781	504	95			
	C	824	592	53				821	540	75			
1968	A	2859	555	78				2832	495	99			
	T	2042	565	75				2042	499	95			
	M	1784	567	75				1784	504	93			
	C	991	601	55				989	536	76			
1969	A	3978	555	72	4283	550	82	4156	508	99	3689	5511	581
	T	3391	561	74	3391	555	81	3391	515	94	3391	5541	572
	M	3051	563	73	3051	556	80	3051	518	93	3051	5561	567
	C	1133	602	54	1132	582	75	1133	548	76	1051	5921	405
1970	A	3333	557	74	3335	552	85	3368	502	100	3029	5529	565
	T	2818	563	72	2818	556	83	2818	508	96	2818	5554	557
	M	2638	564	71	2638	558	82	2638	511	96	2638	5566	550
	C	1017	603	54	1017	594	71	1017	550	77	1017	5953	363

* The LPS was calculated differently for Classes before 1969; therefore, these previous classes are not shown for LPS or WMS.

** A = All candidates tested on variables; T = All candidates fully tested on CEER (or ACT), LPS, PAE and WMS; M = All candidates fully tested and medically qualified; C = Admitted candidates who became cadets.

TABLE 3 Continued

MEANS AND STANDARD DEVIATIONS FOR CEER, LPS, PAE AND WMS
FOR THE CLASSES OF 1966 THROUGH 1975

		CEER			LPS*			PAE			WMS*		
		N	MEAN	SD	N	MEAN	SD	N	MEAN	SD	N	MEAN	SD
1971	A**	3307	559	74	3294	553	84	3276	491	102	3010	5525	573
	T	2705	565	72	2705	559	83	2705	497	100	2705	5559	566
	M	2505	566	72	2505	561	83	2505	501	99	2505	5573	559
	C	1049	598	54	1049	595	70	1049	548	74	1049	5925	365
1972	A	3386	554	76	3382	564	80	3338	519	101	3053	5553	581
	T	2657	561	73	2657	573	77	2657	532	94	2657	5620	557
	M	2514	561	73	2514	573	77	2514	533	94	2514	5618	558
	C	1239	593	54	1239	600	64	1239	561	76	1239	5919	336
1973	A	3869	542	77	3851	563	78	3966	511	106	3518	5476	580
	T	3221	548	75	3221	568	77	3221	515	101	3221	5508	596
	M	3041	548	75	3041	569	77	3041	518	100	3041	5516	569
	C	1439	582	57	1439	595	68	1427	547	81	1427	5829	369
1974	A	6519	531	83	7239	574	70	4706	512	105	6213	5427	582
	T	3858	547	78	3735	581	69	3912	514	103	3717	5551	550
	M	3147	553	76	3093	586	76	3168	524	96	3088	5606	534
	C	1373	589	60	1373	609	59	1366	553	82	1373	5912	353
1975	A	6674	520	88	8041	567	77	4477	505	107	6587	5326	623
	T	3832	538	81	3843	573	78	3892	508	105	3797	5461	596
	M	3527	540	80	3533	576	78	3568	511	103	3501	5484	589
	C	1339	582	59	1339	608	65	1336	546	81	1339	5865	356

*The LPS was calculated differently for Classes before 1969; therefore, these previous Classes are not shown for LPS or WMS.

**A = All candidates tested on variables; T = All candidates fully tested on CEER (or ACT), LPS, PAE and WMS; M = All candidates fully tested and medically qualified; C = Admitted candidates who became cadets.

TABLE 4

MEANS AND STANDARD DEVIATIONS FOR SAT-V, SAT-M, ENG-C, MATH-A, AND HSR FOR THE CLASSES OF 1966 THROUGH 1975

	SAT-V		SAT-M		ENG-C		MATH-A		HSR						
	N	MEAN	SD	N	MEAN	SD	N	MEAN	SD	N	MEAN	SD			
1966															
A*	2322	534	95	2322	600	90	2195	527	101	2204	592	100	2565	496	122
T**	1856	542	92	1856	611	84	1783	535	98	1783	602	96	1856	513	118
M	1657	543	92	1657	612	84	1592	537	98	1592	603	96	1657	514	116
C	802	569	77	802	644	65	753	573	83	753	641	76	690	554	101
1967															
A	2622	537	95	2622	603	88	2572	517	97	2590	582	97	2879	501	119
T	2042	544	92	2042	613	84	2042	526	94	2042	592	94	2042	518	114
M	1781	547	91	1781	617	83	1781	529	93	1781	595	93	1781	519	114
C	821	568	77	821	643	63	818	556	77	818	627	74	821	554	101
1968															
A	2986	543	94	2986	607	92	2927	523	97	2933	587	95	3263	506	119
T	2042	555	88	2042	620	86	2041	536	93	2041	600	90	2040	517	117
M	1784	557	88	1784	623	85	1783	538	91	1783	603	90	1784	519	117
C	989	580	72	989	653	62	989	567	74	989	634	71	987	559	104

* A = All candidates tested on variable; T = All candidates fully tested on CEER, LPS, PAE and WMS;
M = All candidates fully tested and medically qualified; C = Admitted candidates who became cadets.

** For some variables, scores were not recorded even though they were used in calculating the CEER scores.

TABLE 4 Continued
 MEANS AND STANDARD DEVIATIONS FOR SAT-V, SAT-M, ENG-C, MATH-A, AND HSR FOR THE
 CLASSES OF 1966 THROUGH 1975

	SAT-V			SAT-M			ENG-C			MATH-A			HSR		
	N	MEAN	SD	N	MEAN	SD	N	MEAN	SD	N	MEAN	SD	N	MEAN	SD
1969															
A*	4295	542	90	4293	606	92	4178	521	93	4192	581	98	4413	508	116
T**	3391	550	85	3391	617	87	3391	529	90	3391	590	95	3391	516	114
M	3051	552	85	3051	619	85	3051	532	90	3051	592	94	3051	518	114
C	1133	578	70	1133	655	63	1133	566	77	1133	633	75	1133	563	102
1970															
A	3633	546	91	3633	606	88	3511	525	92	3526	587	95	3558	508	116
T	2818	554	87	2818	616	82	2818	532	88	2818	596	92	2818	516	114
M	2638	555	86	2638	618	81	2638	533	88	2638	598	91	2638	516	114
C	1017	581	75	1017	654	62	1017	564	77	1017	640	78	1017	561	102
1971															
A	3684	542	93	3684	607	87	3522	527	92	3536	596	93	3490	506	114
T	2705	553	87	2705	616	81	2705	535	87	2705	603	90	2706	514	113
M	2505	553	87	2505	617	81	2505	536	87	2505	604	89	2506	514	112
C	1049	574	74	1049	649	62	1049	562	74	1049	638	72	1049	551	101

* A = All candidates tested on variable; T = All candidates fully tested on CEER, LPS, PAE and WMS;
 M = All candidates fully tested and medically qualified; C = Admitted candidates who became cadets.

** For some variables, scores were not recorded even though they were used in calculating the CEER scores.

TABLE 4 Continued

MEANS AND STANDARD DEVIATIONS FOR SAT-V, SAT-M, ENG-C, MATH-A, AND HSR FOR THE CLASSES OF 1966 THROUGH 1975

	SAT-V			SAT-M			ENG-C			MATH-A			HSR		
	N	MEAN	SD	N	MEAN	SD	N	MEAN	SD	N	MEAN	SD	N	MEAN	SD
1972															
A*	3808	540	95	3808	601	89	3629	520	93	3634	587	94	3564	501	118
T**	2657	552	89	2657	614	82	2657	530	88	2657	596	90	2657	509	115
M	2514	551	89	2514	614	82	2514	530	89	2514	596	91	2514	508	116
C	1239	579	73	1239	645	61	1239	559	75	1239	630	73	1239	543	105
1973															
A	4394	526	93	4394	591	92	4165	509	94	4164	574	94	4101	493	117
T	3221	536	89	3221	601	86	3221	517	90	3221	582	91	3221	501	114
M	3041	536	89	3041	602	86	3041	517	90	3041	582	91	3041	501	114
C	1439	562	77	1439	635	67	1439	546	78	1439	617	76	1439	538	102
1974															
A	6519	531	83	6339	577	95	5122	508	94	5110	578	98	7168	492	117
T	3912	533	92	3911	594	89	3909	512	94	3912	582	97	3858	505	115
M	3168	539	90	3167	601	86	3165	519	91	3168	590	95	3147	510	113
C	1373	563	80	1372	633	69	1372	549	81	1373	627	80	1373	552	104
1975***															
A	6239	506	99	6237	567	99	4930	505	93	4933	570	94	7470	483	122
T	3877	521	95	3877	581	93	3689	511	91	3703	575	92	3834	499	120
M	3554	522	94	3554	583	92	3407	511	91	3417	576	92	3529	502	119
C	1329	554	78	1329	622	70	1329	543	80	1329	614	77	1339	553	106

* A = All candidates tested on variable; T = All candidates fully tested on CEER, LPS, PAE and WMS; M = All candidates fully tested and medically qualified; C = Admitted candidates who become cadets.

** For some variables, scores were not recorded even though they were used in calculating the CEER scores.

*** Ten cadets in the Class of 1975 admitted through use of ACT scores rather than College Entrance Examination Board Scores.

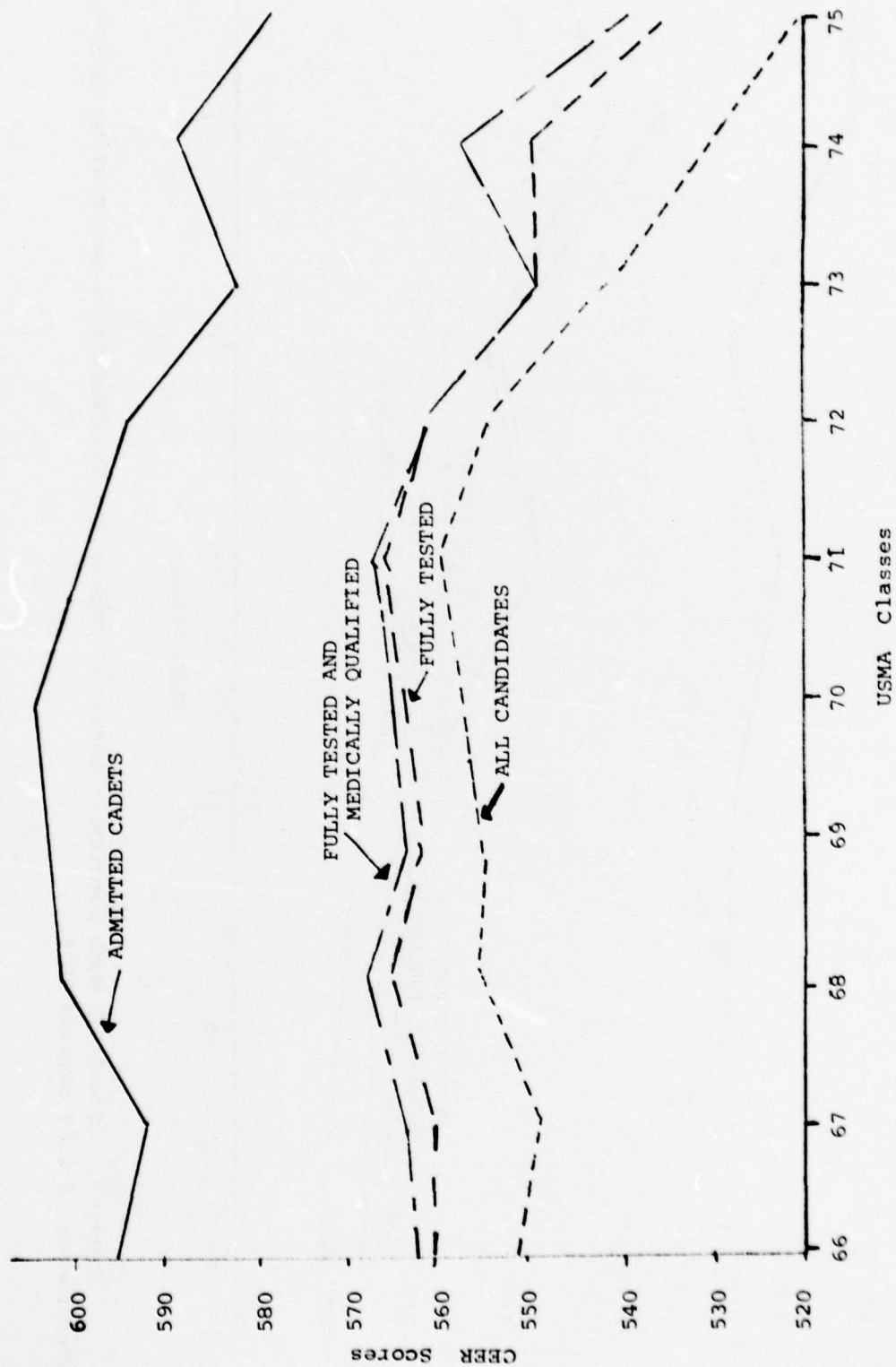


Figure 5. Trends of Mean CEER Scores for the Candidates and Entering Cadets to the Classes of 1966 through 1975.

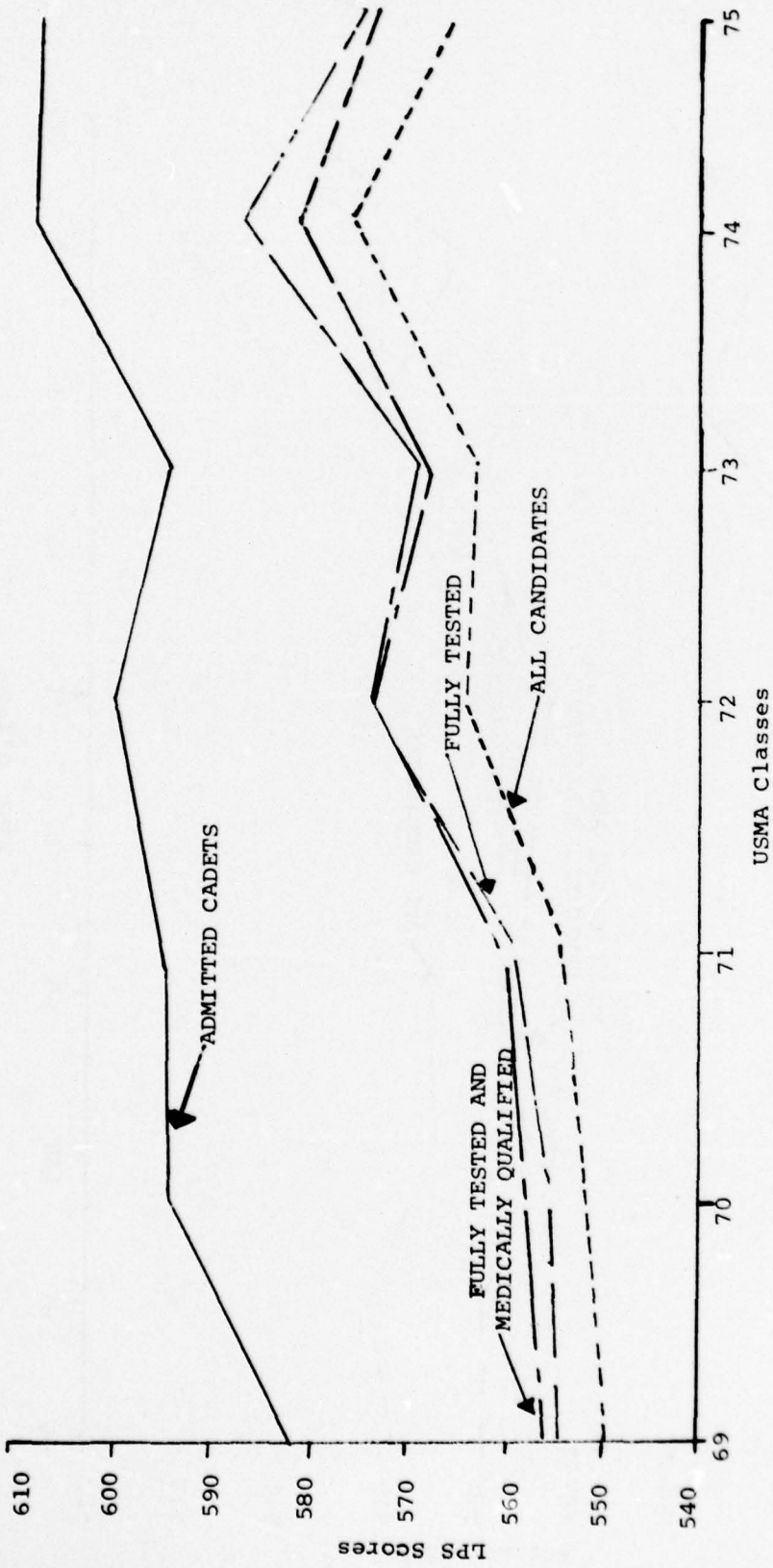


Figure 6. Trends of Mean Leadership Potential Scores for the Candidates and Entering Cadets to the Classes of 1969 through 1975.

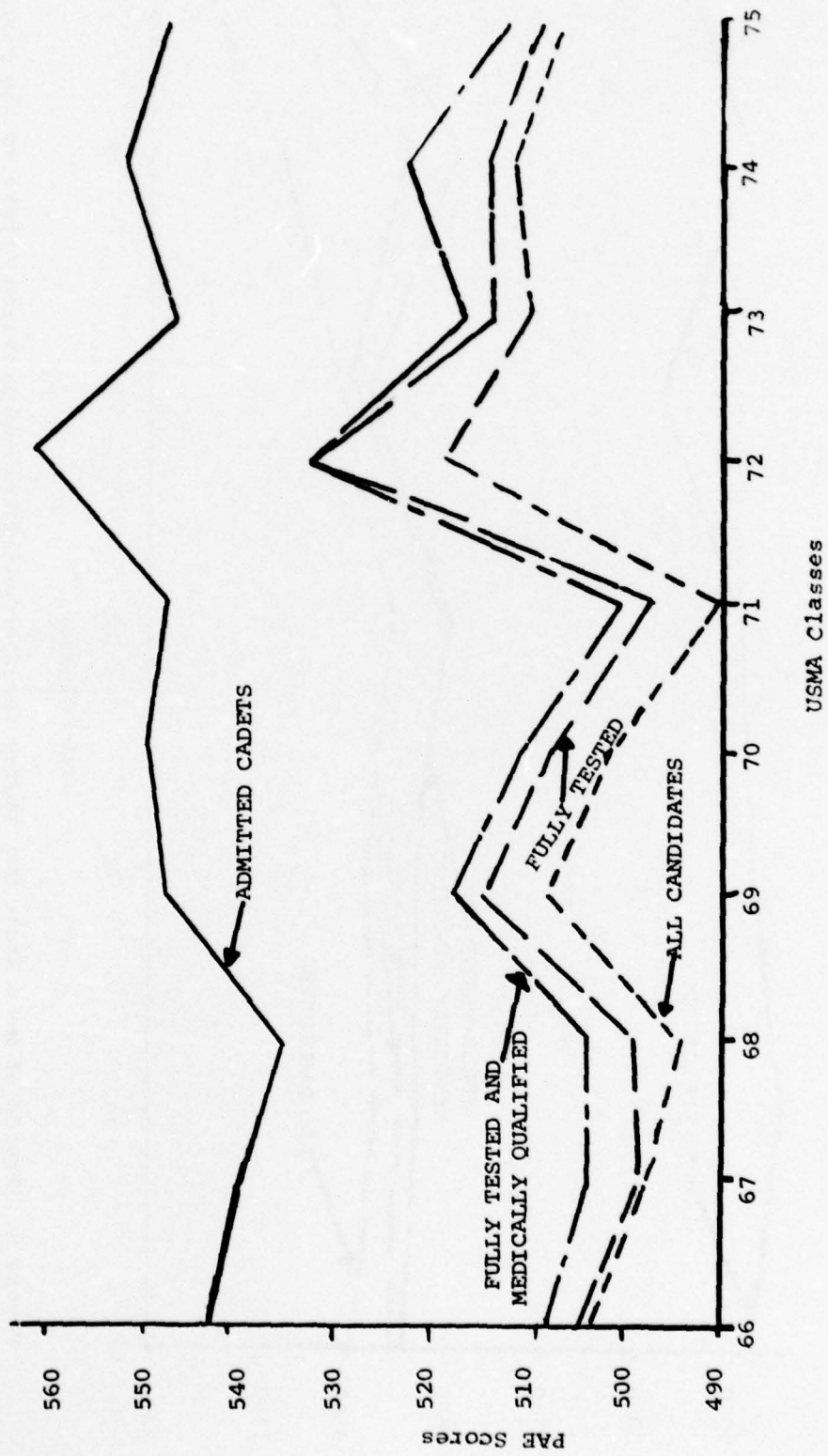


Figure 7. Trends of Mean PAE Scores for the Candidates and Entering Cadets to the Classes of 1966 through 1975.

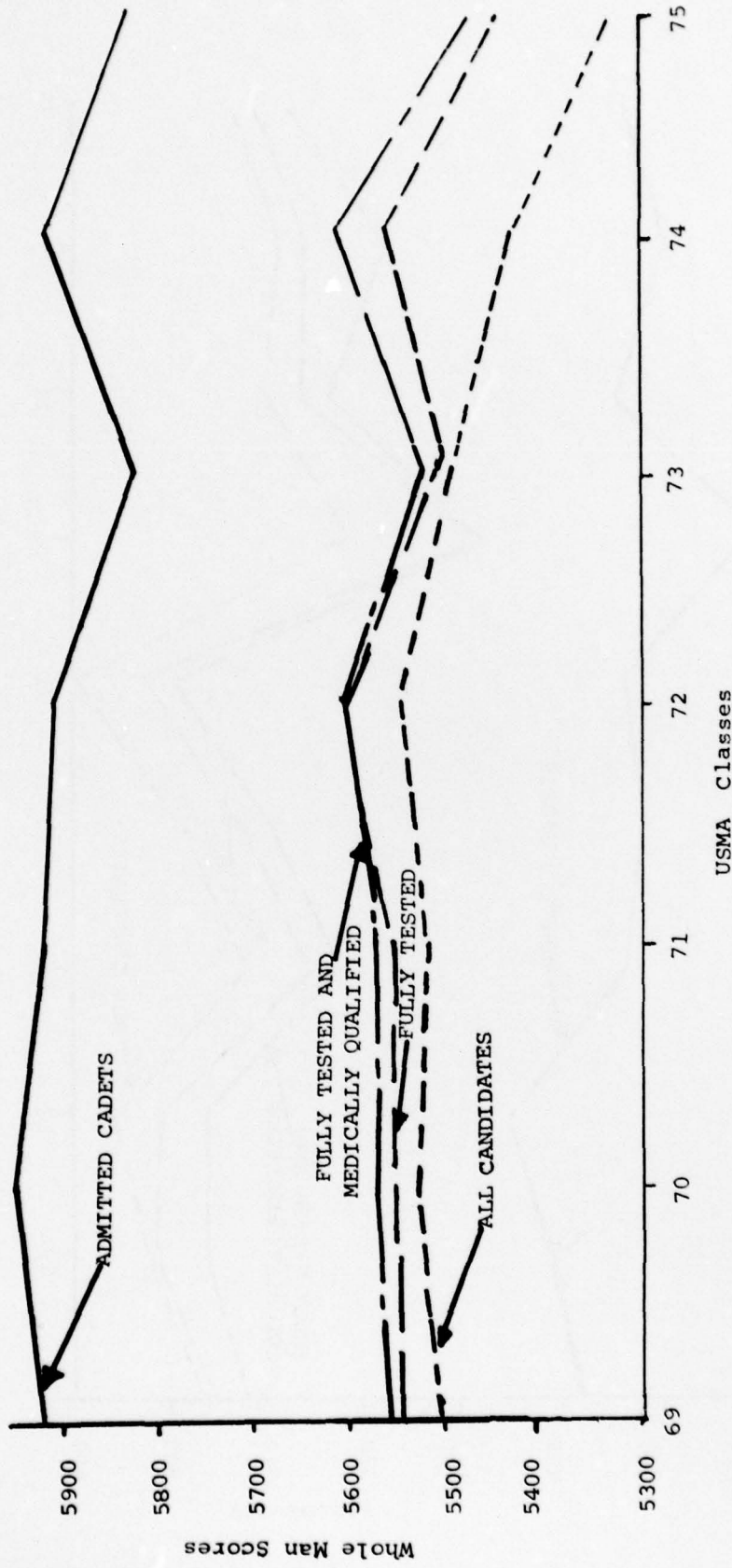


Figure 8. Trends of Mean Whole Man Scores for the Candidates and Entering Cadets to the Classes of 1969 through 1975.

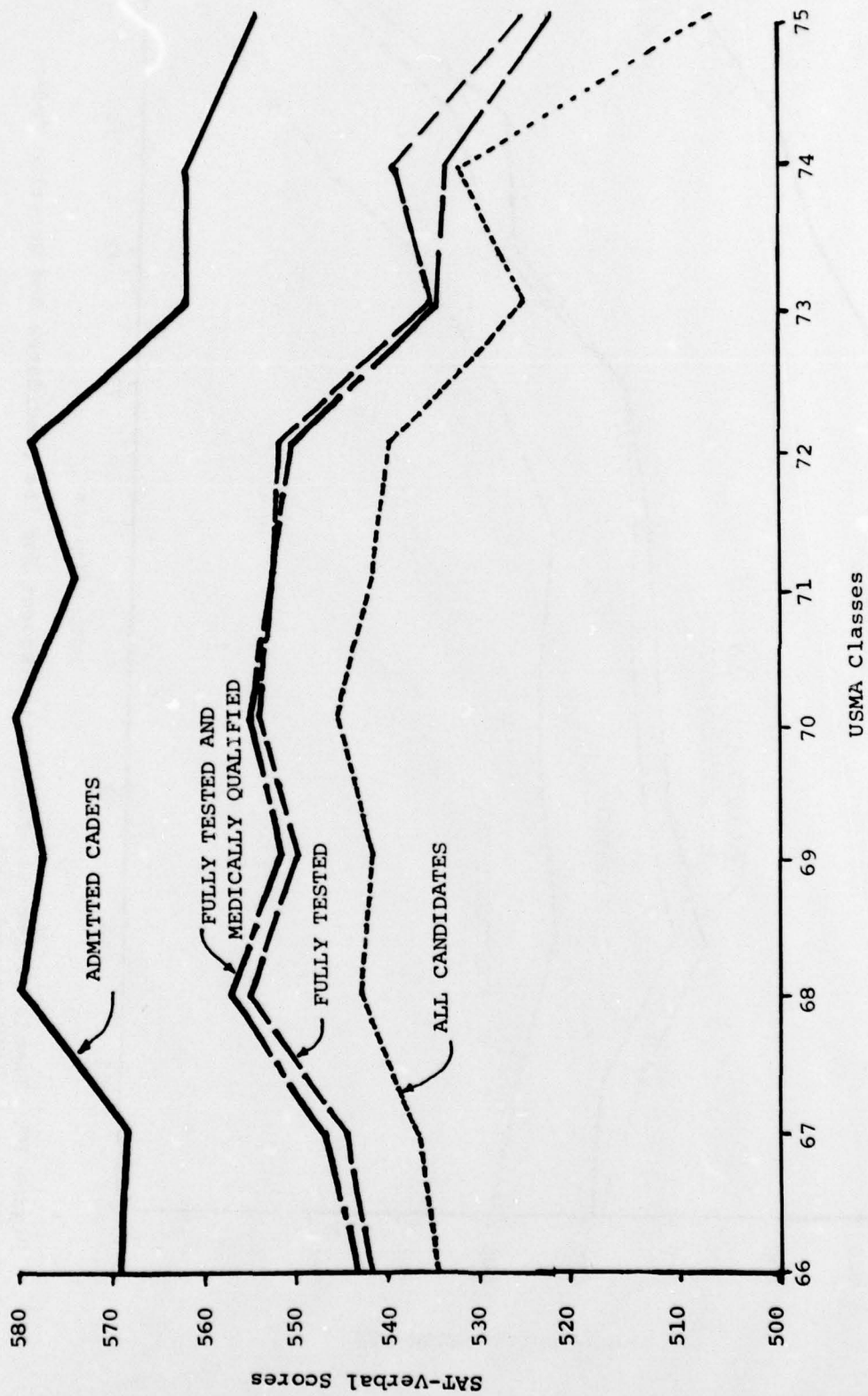


Figure 9. Trends of Mean SAT-Verbal Scores for the Candidates and Entering Cadets to the Classes of 1966 through 1975.

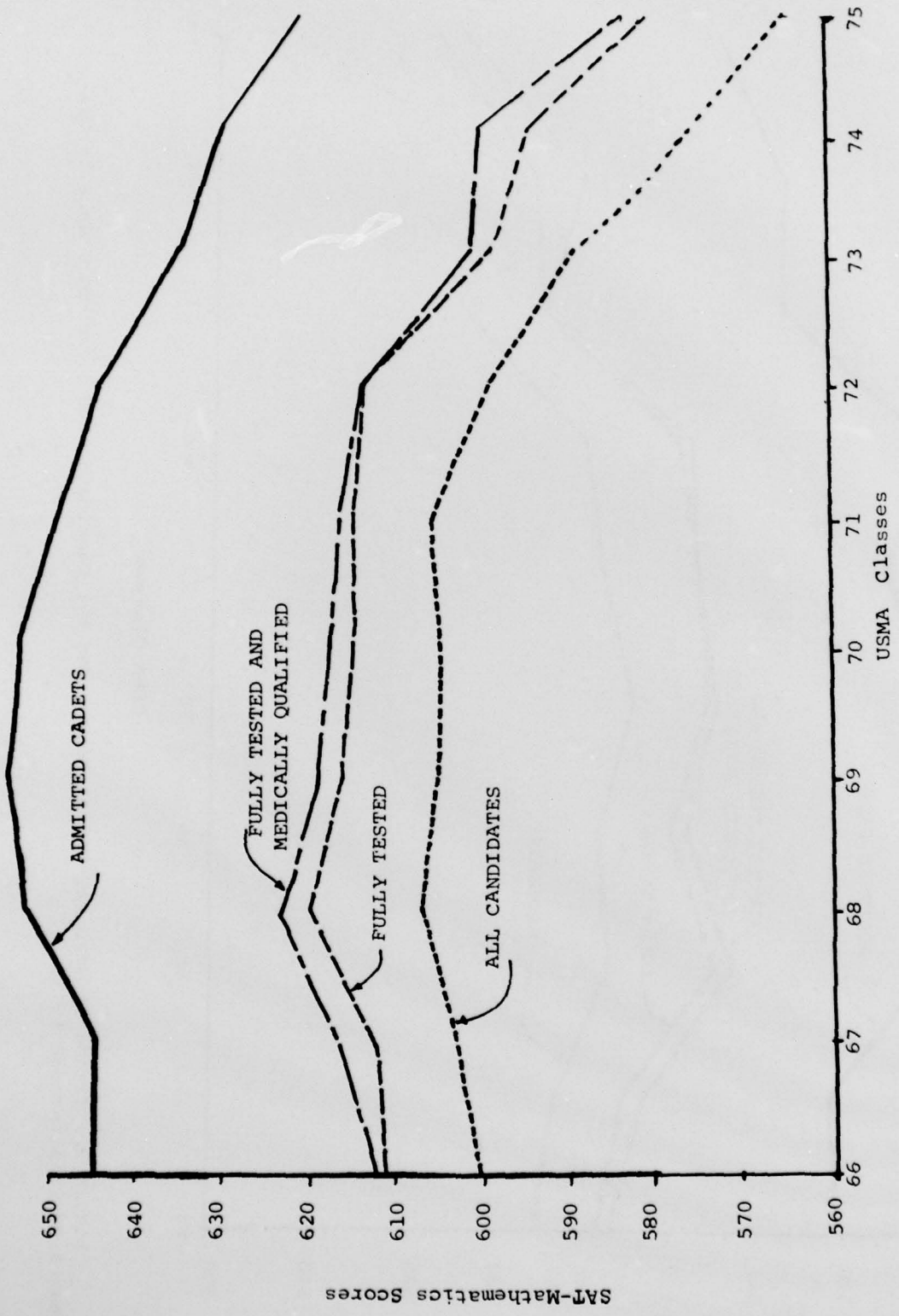


Figure 10. Trends of Mean SAT-Mathematics Scores for the Candidates and Entering Cadets to the Classes of 1966 through 1975.

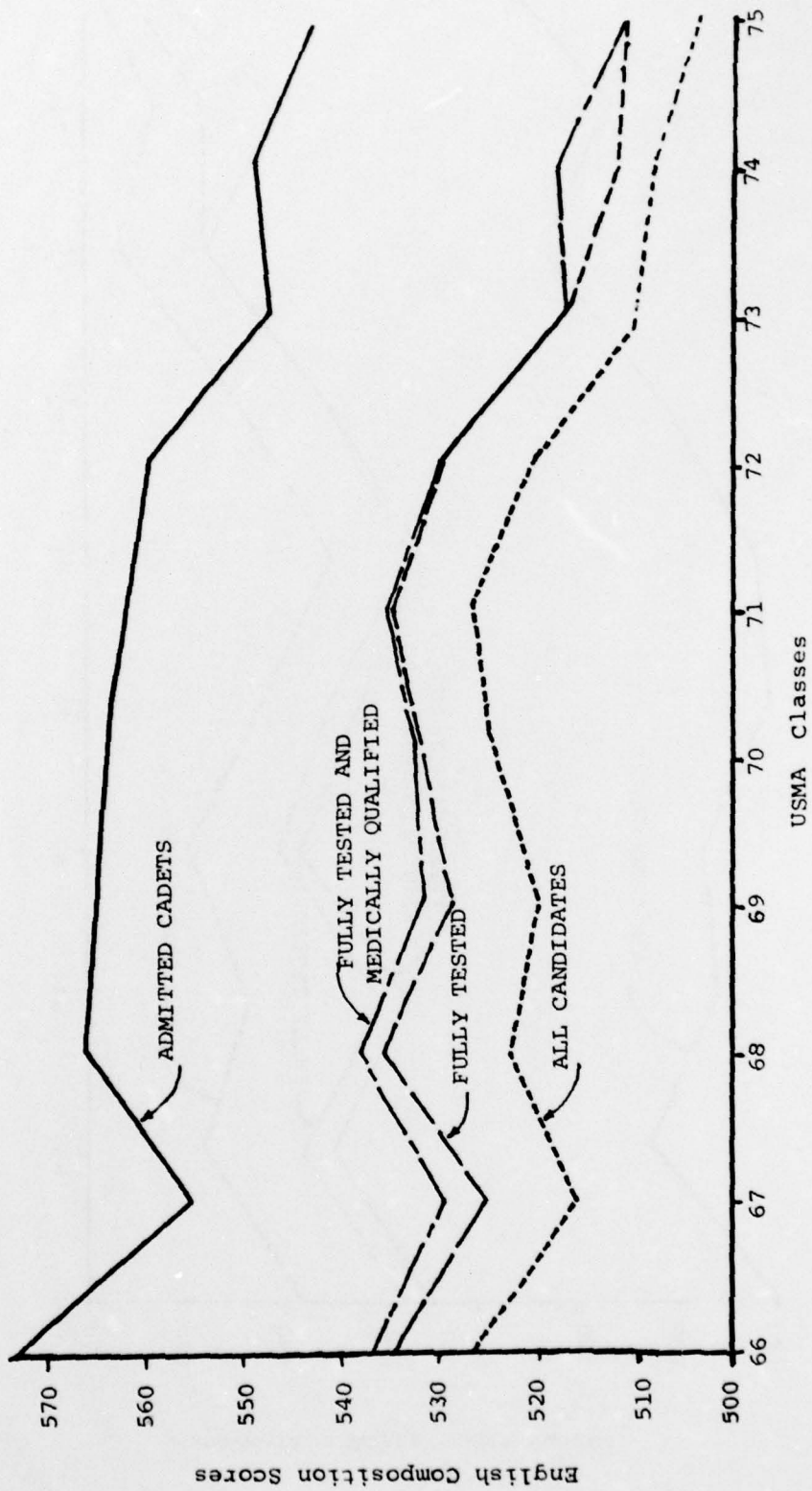


Figure 11. Trends of Mean English Composition Scores for the Candidates and Entering Cadets to the Classes of 1966 through 1975.

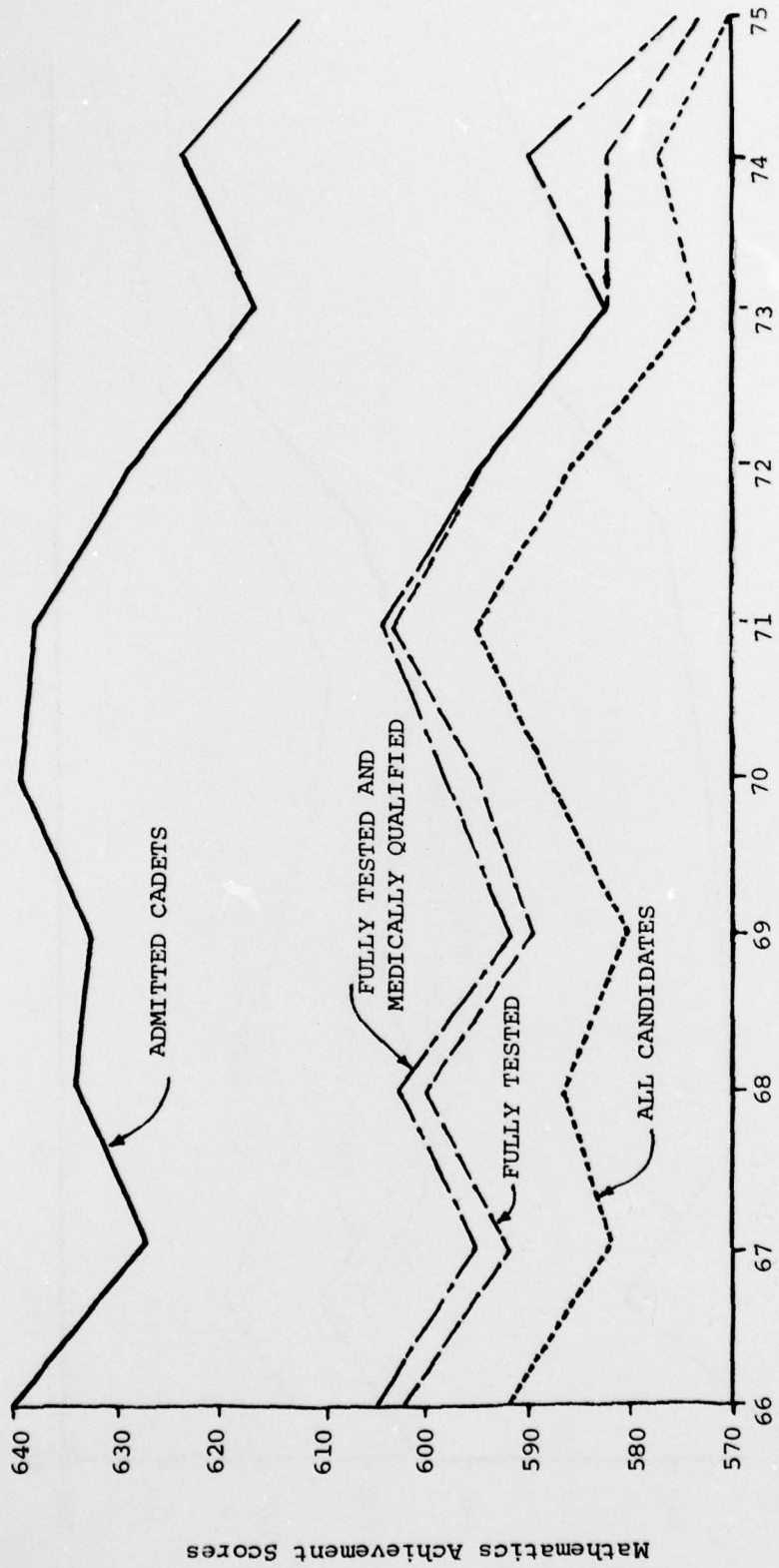


Figure 12. Trends of Mean Mathematics Achievement Scores for the Candidates and Entering Cadets to the Classes of 1966 through 1975.

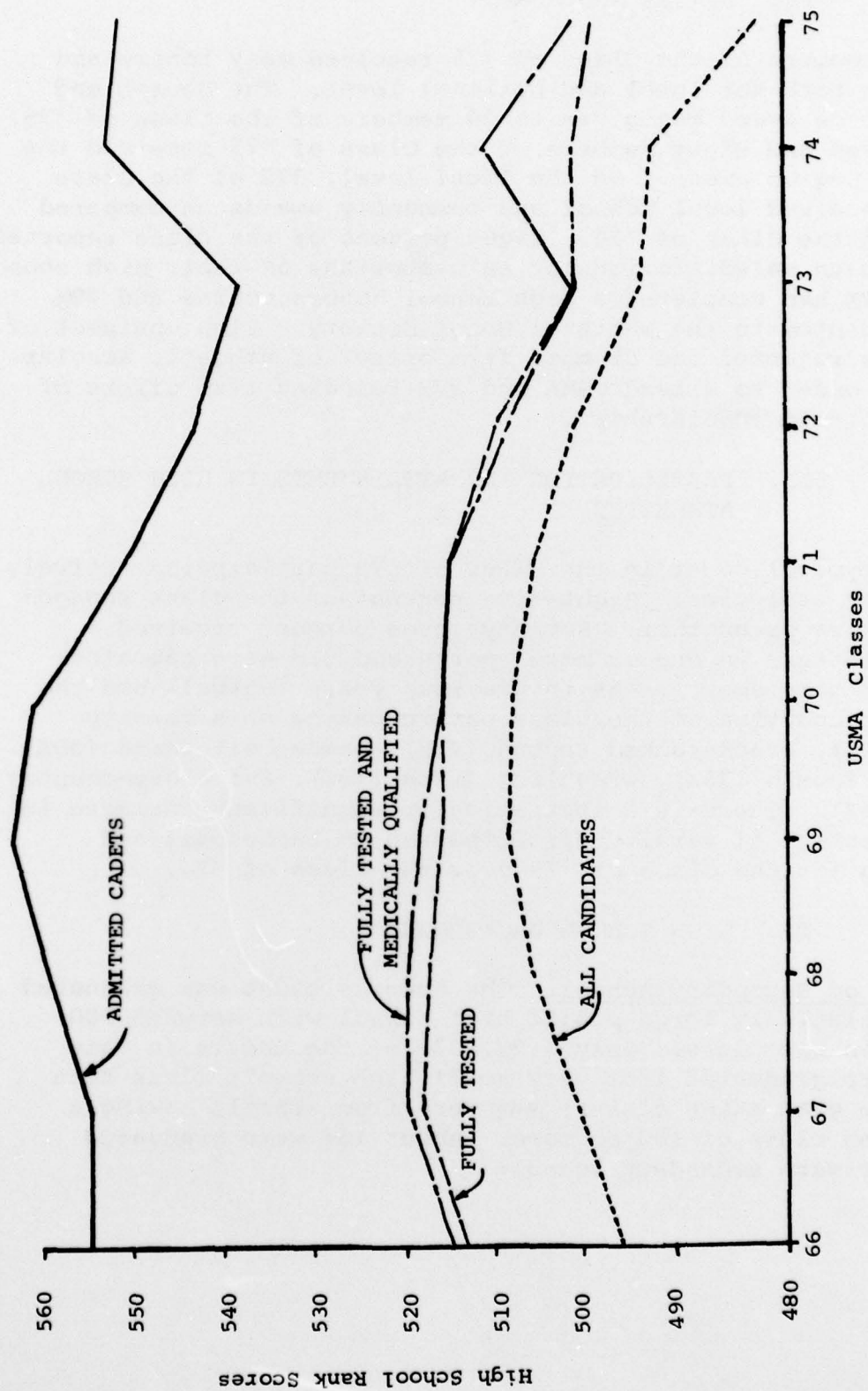


Figure 13. Trends of Mean High School Rank Scores for the Candidates and Cadets to the Classes of 1966 through 1975.

II. HONORS AND AWARDS

5. The members of the Class of '75 received many honors and awards on both the local and national level. The Bausch and Lomb Science award was given to 29 members of the Class of '75. One hundred and eight members of the Class of '75 received the American Legion award. On the local level, 372 of the Class of '75 received local school and community awards as compared to 311 in the Class of '74. Eight percent of the class reported to have been valedictorians or salutatorians of their high school class; 42% had completed a high school honors course and 49% were appointed to the National Honor Society. Eight percent of the class rejected one or more firm offers of athletic scholarships in order to attend USMA and 37% rejected firm offers of a non-athletic scholarship.

III. PARTICIPATION AND ATTAINMENTS IN HIGH SCHOOL ATHLETICS

6. The typical cadet in the Class of '75 participated actively in varsity athletics. Eighty-five percent of the class engaged in one sport or another. Seventy-seven percent received varsity letters in one or more sports and 31% were captains of one or more sports. As in previous years football had the largest proportion of the class participating on a varsity squad (50%), track ranked second (43%), basketball third (30%), baseball fourth (23%), wrestling fifth (19%), and cross-country sixth (16%). There is a statistically significant increase in the percentage of varsity participation in basketball and wrestling for the Class of '75 over the Class of '74.

IV. HIGH SCHOOL BACKGROUND

7. Size of Secondary School. The average cadet was graduated from a relatively large public high school with between 300 and 400 in his class. Only 6.2% (83) of the cadets in this class were graduated from very small high schools (less than 50 in the graduating class); 84% were from schools having a graduating class of 100 or more. About 16% were graduated from a private secondary school.

8. Preparatory Schools: One hundred and eighty-eight (14%) in the Class of '75 attended a preparatory school prior to their entrance in USMA compared to 21% in the Class of '74. This difference is statistically significant. Seventy-eight percent of those who attended a preparatory school, attended the USMA Preparatory School at Fort Belvoir.

9. Attempts to gain Admission: The typical cadet in this class gained admission on his first attempt. However, approximately 23% of the cadets answered "one or more years" to the question, "In how many years before this did you attempt to enter the United States Military Academy?"

10. Rank in Class: As in the recent past, most of the entering cadets (92%) ranked in the top two-fifths of their graduating classes. This year's entering class has a slightly lower percentage in the top two-fifths than did the entering class last year; however, the difference is not statistically significant.

V. NON-ATHLETIC ACTIVITIES DURING HIGH SCHOOL

11. School Clubs: Ninety-one percent of the Class of '75 actively participated in clubs sponsored by their high school and 45% were president or vice-president of high school clubs. Sixty-seven percent of the Class of '75 were involved in non-school clubs of which 32% held the position of president or vice president. Being a member or officer of either type club has not been found to be significantly related to Aptitude for the Service Ratings, academic performance or retention at USMA.

12. School Officers: The proportion of the Class of '75 who were presidents of their senior class - 69 (5.2%) and High School Student Council Presidents - 85 (6.4%) is not significantly different than that of the Class of '74. However senior class officer, other than president - 117 (8.7%) and president of Student Body - 57 (4.3%) were both significantly lower for the Class of '75 than for the Class of '74. Past experience has indicated that being a school officer has a significant positive correlation at USMA with Aptitude for the Service Ratings, a low negative relationship to academic performance, and a positive correlation with retention.

13. Boys' State and Boys' Nation: Two hundred and sixty-four members of the Class of '75 participated in the Boys' State or Boys' Nation program compared to 375 in the Class of '74.

The difference between the Classes of '75 and '74 is statistically significant.

14. Scouts: Fifty-six percent of the Class of '75 reported to have been associated with the scouting program as compared to 57% of the Class of '74. Fifteen percent of the Class of '75 reported to have obtained the rank of Eagle Scout compared to 13% for the Class of '74. The difference in the number of cadets who participated in scouting is not statistically significant but the increase in the number of Eagle Scouts is significant.

VI. MILITARY EXPERIENCE OR SERVICE

15. Seventy-two were on regular component status prior to their arrival at USMA and 82 were of reserve component status; 60 of those with military training received the Marksmanship Badge and 5 the Parachutist Wings. Most of these cadets attended the US Military Academy Preparatory School. Research has shown a much higher percentage loss from those cadets who were in the Service and then came to USMA by way of the USMA Preparatory School than those cadets who had joined the Service for the expressed purpose of going to the USMA Preparatory School and then coming to USMA.

VII. PARENTS' MILITARY BACKGROUND

16. Approximately 23% of the cadets in this class have fathers who are or have been military career men. Another 60% of the fathers have had some active military service; only 17.1% of the cadets indicated that their fathers had no military service. The fathers of 66 members of the Class of 1975 were graduates of USMA and the fathers of 5 others of one of the other Federal academies.

VIII. COLLEGE BACKGROUND

17. Fourteen percent of the Class of 1975 (191) reported attendance at an institution offering a program of college level studies after their graduation from high school. The reports of these cadets indicated that 40 (21%) had attended college for 6 months or less, and 151 (79%) attended more than six months. The percentage of students who attended an institution of college level for the Class of 1975 is significantly more than for the Class of 1974.

IX. TRENDS ON SELECTED CHARACTERISTICS

18. Trends. In order to give a better view of how the cadet population has changed over the past nine classes, Table 5 and 6 were prepared. The figures are rather self explanatory.

X. SUMMARY

Over the ten year period from the entrance of the Class of '66 to the Class of '75, admission variables for the admitted classes have shown the following trends:

a. CEER scores showed an increase from the Class of '66 to '70 and a gradual decrease since.

b. SAT-Verbal, SAT-Math, English Composition and Math Achievement scores showed a similar pattern with the Class of '75 having the lowest scores of the ten year period.

c. The Whole Man Scores for the Class of '75 are higher than the Class of '73 but lower than all other years since the present method of scoring the LPS was started with the Class of '69. The PAE has shown a fairly stable pattern with the Class of '75 higher than the Classes of '66 through '68, within four points of the Classes of '69 through '71 and fifteen points below the high reached by the Class of '72.

d. The Leadership Potential Score is one point lower than for the Class of '74 but higher than all other Classes since the Class of '69 when the present method of scoring was started.

e. The High School Rank score has shown a stable pattern with the Class of '75 only one to ten points lower than the Classes of '66 through '70 and one to fifteen points higher than the Classes of '71 through '74.

TABLE 5

SELECTED CHARACTERISTICS OF THE ENTERING CADETS TO THE
CLASS OF 1967 THROUGH 1975

	CLASS								
	1967	1968	1969	1970	1971	1972	1973	1974	1975
Cadets with 1 or More Semesters of College	218(26.6%)	191(19.3%)	196(17.3%)	193(19.0%)	246(23.3%)	241(19.4%)	184(12.8%)	154(11.3%)	191(14.3%)*
Sons of Alumni of USMA	37(4.5%)	44(4.5%)	53(4.7%)	68(6.7%)	55(5.2%)	67(5.4%)	67(4.7%)	71(5.2%)	66(4.9%)
Attended USMA Preparatory School	63(7.7%)	46(4.7%)	62(5.5%)	96(9.4%)	118(11.2%)	125(10.0%)	130(9.0%)	188(13.7%)	147(11.0%)
Attended Other Preparatory School	58(5.8%)	61(5.1%)	57(5.0%)	57(5.7%)	59(5.6%)	71(5.8%)	70(4.9%)	101(7.3%)	41(3.0%)
Attended Public High School	670(81.6%)	810(81.9%)	932(81.5%)	849(83.5%)	876(83.1%)	1023(82.2%)	1212(84.3%)	1171(85.3%)	1122(83.8%)
Attended Private High School	151(18.4%)	179(18.1%)	211(18.5%)	168(16.5%)	178(16.9%)	221(17.8%)	226(15.7%)	202(14.7%)	215(16.1%)
Rank in High School Class									
Top Fifth	625(76.1%)	769(77.8%)	889(78.5%)	809(79.5%)	806(76.5%)	938(75.4%)	1066(74.1%)	1057(76.9%)	947(70.7%)
Second Fifth	150(18.3%)	168(17.0%)	177(15.6%)	144(14.2%)	164(15.5%)	235(18.9%)	264(18.4%)	229(16.7%)	280(20.9%)
Third Fifth	40(4.9%)	47(4.7%)	60(5.3%)	54(5.3%)	75(7.1%)	63(5.1%)	92(6.4%)	75(5.5%)	96(7.2%)
Fourth Fifth	6(0.7%)	4(0.4%)	4(0.4%)	9(0.9%)	6(0.6%)	7(0.6%)	12(0.8%)	8(0.6%)	10(0.8%)
Bottom Fifth	0	1(0.1%)	2(0.2%)	1(0.1%)	3(0.3%)	1(0.1%)	4(0.3%)	3(0.2%)	4(0.3%)
Valedictorians	52(6.3%)	61(6.2%)	67(5.9%)	55(5.4%)	59(5.6%)	62(5.0%)	53(3.7%)	56(4.1%)	68(5.1%)
Salutatorians	43(5.2%)	55(5.6%)	35(3.1%)	41(4.0%)	40(3.8%)	35(2.8%)	56(3.9%)	57(4.2%)	40(3.0%)
N =	821	989	1132	1017	1054	1244	1438	1373	1339

* In 1975 indicates one or more months of college.

TABLE 6

SELECTED HIGH SCHOOL ACTIVITIES AND AWARDS OF THE ENTERING CADETS TO THE CLASSES OF 1967 THROUGH 1975

	CLASS									
	1967	1968	1969	1970	1971	1972	1973	1974	1975	
Senior Class President	62 (7.6%)	76 (7.7%)	89 (7.9%)	83 (8.2%)	110 (10.4%)	88 (7.1%)	84 (5.8%)	64 (4.7%)	69 (5.2%)	
Senior Class Officer	120 (14.6%)	120 (12.1%)	127 (11.2%)	117 (11.5%)	114 (10.8%)	105 (8.4%)	137 (9.5%)	175 (12.8%)	117 (8.7%)	
Student Body President	53 (6.5%)	67 (6.8%)	77 (6.8%)	63 (6.2%)	105 (10.0%)	55 (4.4%)	75 (5.2%)	102 (7.4%)	57 (4.3%)	
School Club President	236 (28.7%)	327 (33.1%)	363 (32.0%)	381 (37.5%)	429 (40.7%)	287 (23.1%)	439 (30.5%)	435 (31.7%)	600 (44.8%)*	
Debate Team	104 (12.7%)	112 (11.4%)	156 (13.8%)	155 (15.2%)	166 (15.7%)	162 (13.0%)	173 (12.0%)	160 (11.7%)	144 (10.8%)	
Varsity Lettermen	610 (74.3%)	733 (74.1%)	863 (76.2%)	667 (65.8%)	698 (66.3%)	956 (76.8%)	1068 (74.3%)	1070 (77.9%)	1029 (76.9%)	
Team Captains	283 (34.5%)	306 (30.9%)	377 (33.3%)	526 (51.7%)	558 (52.9%)	423 (34.0%)	490 (33.4%)	466 (33.9%)	416 (31.1%)	
All State/All Conference	191 (23.3%)	212 (21.4%)	276 (24.4%)	156 (15.4%)	165 (15.7%)	314 (25.2%)	391 (27.3%)	325 (23.7%)	363 (27.1%)	
Boy Scouts, All	540 (65.8%)	623 (63.0%)	671 (59.2%)	666 (65.5%)	654 (62.0%)	695 (55.9%)	829 (57.6%)	776 (56.5%)	748 (55.9%)	
Boy Scouts, Eagle	77 (9.4%)	124 (12.5%)	150 (13.2%)	157 (15.4%)	208 (19.7%)	168 (13.5%)	184 (12.8%)	176 (12.8%)	205 (15.3%)	
Boys State Representative	181 (22.0%)	213 (21.5%)	299 (26.4%)	222 (21.5%)	328 (31.1%)	265 (21.3%)	331 (23.0%)	373 (27.2%)	261 (19.5%)	
High School Dramatic Club	105 (12.8%)	121 (12.2%)	156 (13.8%)	163 (16.0%)	159 (15.1%)	181 (14.5%)	187 (13.0%)	193 (14.1%)	189 (14.1%)	
Bausch & Lomb Science Award	32 (3.9%)	47 (4.8%)	43 (3.8%)	18 (1.8%)	37 (3.5%)	26 (2.1%)	26 (1.8%)	20 (1.5%)	29 (2.2%)	
American Legion Award	82 (10.0%)	113 (11.4%)	90 (7.9%)	101 (9.9%)	94 (8.9%)	90 (7.2%)	104 (7.2%)	128 (9.3%)	108 (8.1%)	
All-State Band	12 (1.5%)	22 (2.2%)	10 (0.9%)	15 (1.5%)	16 (1.5%)	162 (13.0%)	173 (12.0%)	40 (3.0%)	24 (1.8%)	
Foreign Exchange Student	8 (1.0%)	5 (0.5%)	12 (1.1%)	0	41 (3.9%)	11 (0.9%)	16 (1.1%)	7 (0.5%)	**	
Cadets with Prior Service***	87 (10.5%)	68 (6.9%)	100 (8.9%)	121 (11.9%)	142 (13.5%)	161 (13.0%)	134 (9.3%)	193 (14.1%)	163 (12.2%)	

*President or Vice President

**Not available

***Mostly USMA Preparatory School

Selected References

Bridges, Claude F., Analysis of the Characteristics of the Class of 1971. Office of Institutional Research, US Military Academy, West Point, New York, March 1968.

Hecox, Walter E., CPT, A Comparison of New Cadets at USMA With Entering Freshmen at Other Colleges, Class of 1973. Office of Institutional Research, US Military Academy, West Point, New York, February 1970.

Houston, John W., Trends in Admission Variables. Office of Institutional Research, US Military Academy, West Point, New York. April 1971.

Houston, John W., Background and Predicted Success of Cadets in the Class of 1973 With Comparisons with Previous Classes. Office of Institutional Research, US Military Academy, West Point, New York. April 1970.

Kraft, John D., Background and Predicted Success of Cadets in the Class of 1972. Office of Institutional Research, West Point, New York, May 1969.

Marron, Joseph E., Research Notes 63-1, 63-2, and 64-1. Research Division, West Point, New York, March 1963 and February 1964.

Medsker, Gerald W., Colonel, A Comparison of New Cadets at USMA with Entering Freshmen at Other Colleges, Class of 1974. Office of Institutional Research, US Military Academy, West Point, New York. January 1971.

Spencer, Gary, CPT, A Trend Comparison of the Classes of 65-72 on Selected Admissions Variables. Office of Institutional Research, US Military Academy, West Point, New York. October 1968.

Wise, Arthur E., CPT, A Comparison of New Cadets at USMA With Entering Freshmen at Other Colleges. Office of Research, US Military Academy, West Point, New York. March 1969.

Office of Institutional Research, Characteristics of the Classes of 1965 Through 1974.

UNCLASSIFIED

Security Classification

DOCUMENT CONTROL DATA - R & D

(Security classification of title, body of abstract and indexing annotation must be entered when the overall report is classified)

1. ORIGINATING ACTIVITY (Corporate author) Office of Institutional Research US Military Academy West Point, New York 10996		2a. REPORT SECURITY CLASSIFICATION UNCLASSIFIED	
		2b. GROUP	
3. REPORT TITLE Trends in Admission Variables Through The Class of 1975			
4. DESCRIPTIVE NOTES (Type of report and inclusive dates)			
5. AUTHOR(S) (First name, middle initial, last name) John W. Houston			
6. REPORT DATE November 1971		7a. TOTAL NO. OF PAGES 36	7b. NO. OF REFS 10
8a. CONTRACT OR GRANT NO.		8b. ORIGINATOR'S REPORT NUMBER(S) 9A1.01-72-023	
8. PROJECT NO.		9a. OTHER REPORT NO(S) (Any other numbers that may be assigned this report)	
c.		d.	
10. DISTRIBUTION STATEMENT REPRODUCTION OF THIS DOCUMENT IN WHOLE OR IN PART MUST HAVE PRIOR APPROVAL OF THE SUPERINTENDENT, UNITED STATES MILITARY ACADEMY, WEST POINT, N. Y.			
11. SUPPLEMENTARY NOTES		12. SPONSORING MILITARY ACTIVITY Office of Institutional Research US Military Academy West Point, New York 10996	
13. ABSTRACT The United States Military Academy uses the Whole Man concept in selection of candidates for admission. This report compares the scores of admission variables for the Class of 1975 with those of previous classes. The Class of 1975 has a slight decrease in its academic potential as compared to recent classes while the leadership potential score has shown a slight increase.			

DD FORM 1473 1 NOV 66

REPLACES DD FORM 1473, 1 JAN 64, WHICH IS OBSOLETE FOR ARMY USE.

UNCLASSIFIED

Security Classification

UNCLASSIFIED

Security Classification

14.	KEY WORDS	LINK A		LINK B		LINK C	
		ROLE	WT	ROLE	WT	ROLE	WT
	Freshmen USMA Class of 1975 Admission Scores						

UNCLASSIFIED

Security Classification