

AD-A077 771

MILITARY ACADEMY WEST POINT NY OFFICE OF THE DIRECTO--ETC F/G 5/9  
ADMISSION SCORES OF THE USMA CLASS OF 1976 (CANDIDATES AND CADE--ETC(U)  
OCT 72 J W HOUSTON

UNCLASSIFIED

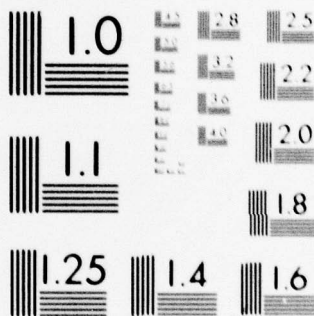
981.01-73-010

NL

| OF |  
AD  
A077771



END  
DATE  
FILMED  
1-80  
DDC



MICROCOPY RESOLUTION TEST CHART  
 NATIONAL BUREAU OF STANDARDS-1963-A

LEVEL #1

①

AD A 077771



# UNITED STATES MILITARY ACADEMY

WEST POINT · NEW YORK

ADMISSION SCORES  
OF THE  
USMA CLASS OF 1976  
(CANDIDATES AND CADETS)

DDC FILE COPY

DDC  
RECEIVED  
DEC 10 1979  
A

DISTRIBUTION STATEMENT A  
Approved for public release  
Distribution Unlimited

OFFICE OF  
INSTITUTIONAL RESEARCH

October 1972

DUTY-HONOR-COUNTRY 79 20 9 166

6  
ADMISSION SCORES OF THE USMA CLASS OF 1976  
(CANDIDATES AND CADETS),

14 9Bl.01-73-010  
Project 142

10  
Prepared by: John W. Houston

11 October 1972

12 32

Accession For	
MTS GR&I	<input checked="" type="checkbox"/>
DDC TAB	<input type="checkbox"/>
Unannounced	<input type="checkbox"/>
Justification	<input type="checkbox"/>
By _____	
Distribution/	
Availability Codes	
Dist.	Avail and/or special
A	

NOTE: Any conclusions in this report are not to be construed as official U. S. Military Academy or Department of the Army positions unless so designated by other authorized documents.

~~DISTRIBUTION: This document is prepared for official purposes only. Its contents may not be reproduced or distributed (in whole or in part) without specific permission of the Superintendent, U. S. Military Academy, in each instance.~~

OFFICE OF INSTITUTIONAL RESEARCH  
UNITED STATES MILITARY ACADEMY  
WEST POINT, NEW YORK 10996

406 247

LB

## ABSTRACT

The purpose of this report is to bring together, for research and information purposes, the summary statistics of the admission scores of the candidates and cadets - Class of 1976. The distributions of scores are shown for six (6) categories of candidates, including decliners and minority group members; and four (4) categories of admitted cadets, including Negro members, graduates of the U. S. Military Academy Preparatory School, and recruited athletes.

## TABLE OF CONTENTS

TABLE		PAGE
	Introduction.....	1
1	Frequency Distributions, Means and Standard Deviations of Scores for All Candidates to the Class of 1976 (Tables A, B, and C).....	2-5
2	Frequency Distributions, Means and Standard Deviations of Scores for Fully Examined Candidates to the Class of 1976 (Tables A and B)..	6-7
3	Frequency Distributions, Means and Standard Deviations of Scores for Fully Examined and Medically Qualified Candidates to the Class of 1976 (Tables A and B).....	8-9
4	Frequency Distributions, Means and Standard Deviations of Scores for the Admitted Class of 1976 (Tables A and B).....	10-11
5	Frequency Distributions, Means and Standard Deviations of Scores for Those Candidates Who Declined Their Appointment to the Class of 1976 (Tables A and B).....	12-13
6	Frequency Distributions, Means and Standard Deviations of Scores for Those Candidates Who Were Fully Qualified But Not Admitted to the Class of 1976 (Tables A and B).....	14-15
7	Frequency Distributions, Means and Standard Deviations of Scores for Those Candidates Who Were Identified as Belonging to a Minority Group for the Class of 1976 (Tables A and B).....	16-17
8	Frequency Distributions, Means and Standard Deviations of Scores for those Negro Members of the Class of 1976 (Tables A and B).....	18-19
9	Frequency Distributions, Means and Standard Deviations of Scores for those Members of the Class of 1976 who were Graduates of the USMA Preparatory School (Tables A and B).....	20-21
10	Frequency Distributions, Means and Standard Deviations of Scores for Recruited Athletes in the Class of 1976 (Tables A and B).....	22-23
11	Means of Admission Variables of All Above Sub-Groups (Tables A and B).....	24-25

## INTRODUCTION

Since many candidates for the Class of 1976 had both College Board Scores and American College Test Scores, (CEER and ACEER), each candidate was evaluated for admission using the higher score. However, most candidates have only the CEER or the ACEER.

Tables 1A through 11A show the scores for the various categories of candidates and cadets who were evaluated for admission using CEER.

Tables 1B through 11B show similar scores for those who were evaluated using ACEER. For example, Table 4A shows the scores of the 1094 cadets who were admitted using CEER and Table 4B shows the scores of the 284 cadets who were admitted using ACEER. The sum of these two gives the total of the admitted class: 1378. If a candidate took both the College Board tests and the American College Testing Assessment Program tests, both scores are included in Table 1C.

All data were obtained from the Pre-cadet Master File.

The following abbreviations apply to this report:

- CEER: A weighted composite score of four College Entrance Examination Board tests and a standardized high school rank score.
- LPS: Leadership Potential Score.
- PAE: Physical Aptitude Examination Score.
- WMS: Whole Man Score; a weighted composite score of the CEER (or ACEER), LPS and PAE.
- SAT-V: Scholastic Aptitude Test-Verbal.
- SAT-M: Scholastic Aptitude Test-Mathematics.
- ENG-A: English Achievement (or English Composition).
- MATH-A: Mathematics Achievement.
- HSR: High School Rank Score, a score derived by converting the actual high school rank to a standard score.
- ACT-EN: American College Test, English.
- ACT-MA: American College Test, Mathematics.
- ACT-NA: American College Test, Natural Science
- ACEER: A composite score of ACT tests and HSR.

TABLE 1A

ALL CANDIDATES TO THE CLASS OF 1976  
(Evaluated Using CEER)

Total N = 5269

Frequency Distribution

	<u>CEER</u>	<u>LPS</u>	<u>PAE</u>	<u>WMS*</u>	<u>SAT-V</u>	<u>SAT-M</u>	<u>ENG-A</u>	<u>MATH-A</u>	<u>HSR</u>
200-249	4	0	66	0	11	1	2	1	146
250-299	38	1	64	3	54	20	23	1	159
300-349	146	35	138	23	164	80	115	27	263
350-399	319	66	228	103	415	154	302	95	601
400-449	678	274	384	427	606	321	548	256	680
450-499	924	492	551	1001	865	491	645	407	813
500-549	1119	1119	624	1506	890	746	722	633	962
550-599	1032	1047	515	1454	749	925	569	684	654
600-649	640	1487	405	581	536	907	383	696	435
650-699	270	618	188	102	300	626	196	417	311
700-749	83	70	70	12	115	340	101	280	128
750-800	16	3	36	0	19	110	17	131	117
N	5269**	5212	3269	5212	4724	4721	3623	3628	5269
Mean	520.02	567.63	509.82	532.20	509.10	567.58	508.62	572.90	484.52
Std Dev	90.12	75.83	110.00	63.60	99.23	99.68	97.03	97.26	122.03

\*Whole Man Score divided by 10. (This applies to all tables in this report.)

\*\*Number with CEER score is greater than those with CEER Components as many of the candidates with HSR and Preliminary SAT scores were given an estimated CEER.

TABLE 1B

ALL CANDIDATES TO THE CLASS OF 1976  
(Evaluated Using ACT)  
Total N = 1243  
Frequency Distribution

	<u>ACEER</u>	<u>LPS</u>	<u>PAE</u>	<u>WMS</u>	<u>HSR</u>		<u>ACT-EN</u>	<u>ACT-MA</u>	<u>ACT-NA</u>
200-249	3	0	19	0	18	1-3	1	5	2
250-299	12	0	25	2	37	4-6	7	2	3
300-349	40	8	49	7	59	7-9	20	10	5
350-399	99	21	94	42	158	10-12	42	10	6
400-449	140	75	128	95	172	13-15	75	38	33
450-499	235	139	179	249	186	16-18	228	89	110
500-549	318	220	196	393	271	19-21	397	106	140
550-599	261	260	170	334	149	22-24	315	170	162
600-649	105	321	108	99	88	25-27	129	292	213
650-699	25	170	57	6	63	28-30	23	323	356
700-749	0	14	22	0	29	31-33	4	142	193
750-800	1	0	7	1	13	34-36	0	54	17
N	1239	1228	1054	1228	1243		1241	1241	1240
Mean	505.00	568.75	501.95	522.55	480.56		20.04	25.53	25.52
Std Dev	82.98	78.96	110.13	62.14	110.92		4.25	5.54	5.37

TABLE 1C

ALL CANDIDATES TO THE CLASS OF 1976\*  
Obtaining Indicated Scores

	<u>CEER</u>	<u>LPS</u>	<u>PAE</u>	<u>WMS</u>	<u>SAT-V</u>	<u>SAT-M</u>	<u>ENG-A</u>	<u>MATH-A</u>	<u>HSR</u>	<u>ACEER</u>
200-249	4	1	85	0	13	3	2	1	164	5
250-299	41	2	89	5	66	24	24	3	196	14
300-349	169	43	187	30	204	91	125	32	322	50
350-399	384	87	322	145	515	186	358	105	759	143
400-449	809	249	512	522	735	385	616	296	852	207
450-499	1132	631	730	1250	1036	621	708	455	999	330
500-549	1369	1339	820	1899	1048	922	791	720	1233	433
550-599	1184	1307	685	1788	856	1075	608	750	803	385
600-649	723	1808	513	680	596	1039	395	750	523	194
650-699	294	688	245	108	326	707	199	437	374	54
700-749	88	84	92	12	125	366	102	283	157	4
750-800	16	3	43	1	19	117	17	133	130	1
N	6213**	6440	4323	6440	5539	5536	3945	3965	6512	1829
Mean	517.81	567.84	507.90	530.36	505.18	563.86	505.20	569.40	483.76	508.15
Std Dev	88.73	76.43	110.06	63.60	98.71	98.98	96.31	96.79	120.00	92.03

\*Includes both CEER and ACT scores if candidates took both.

\*\*Number with CEER score is greater than those with CEER Components as many of the candidates with HSR and Preliminary SAT scores were given an estimated CEER.

TABLE 1C (Continued)

ALL CANDIDATES TO THE CLASS OF 1976  
OBTAINING INDICATED SCORES

	<u>ACT-EN</u>	<u>ACT-MA</u>	<u>ACT-NA</u>
1-3	3	7	4
4-6	10	3	3
7-9	29	14	9
10-12	63	15	12
13-15	107	51	59
16-18	323	127	153
19-21	580	178	211
22-24	487	253	225
25-27	210	413	303
28-30	48	477	520
31-33	10	228	326
34-36	0	94	34
N	1860	1860	1859
Mean	20.23	25.68	25.63
Std Dev	4.38	5.59	5.55

TABLE 2A

FULLY EXAMINED CANDIDATES  
(Evaluated Using CEER)  
Total N = 2943

Frequency Distribution

	<u>CEER</u>	<u>LPS</u>	<u>PAE</u>	<u>WMS</u>	<u>SAT-V</u>	<u>SAT-M</u>	<u>ENG-A</u>	<u>MATH-A</u>	<u>HSR</u>
200-249	1	0	55	0	2	0	0	1	70
250-299	11	0	53	2	20	13	11	1	57
300-349	34	16	114	10	49	29	70	17	117
350-399	104	39	198	27	173	53	205	58	283
400-449	266	124	346	137	314	130	387	164	364
450-499	473	258	508	398	528	235	487	284	453
500-549	654	548	567	808	583	423	584	455	547
550-599	678	687	476	1015	540	605	464	541	410
600-649	461	790	365	431	401	650	323	574	290
650-699	184	421	163	81	227	459	155	346	193
700-749	64	35	64	12	88	262	87	237	82
750-800	13	3	34	0	17	83	15	109	77
N	2943	2921	2943	2921	2942	2942	2788	2787	2943
Mean	541.23	575.69	511.63	548.79	527.92	586.27	516.28	581.15	498.99
Std Dev	86.68	73.27	108.48	59.51	93.85	93.38	94.96	95.55	120.03

TABLE 2B

FULLY EXAMINED CANDIDATES  
(Evaluated Using ACT)  
Total N = 981

Frequency Distribution

	<u>ACEER</u>	<u>LPS</u>	<u>PAE</u>	<u>WMS</u>	<u>HSR</u>		<u>ACT-EN</u>	<u>ACT-MA</u>	<u>ACT-NA</u>
200-249	3	0	15	0	12	1-3	1	5	1
250-299	5	0	21	2	27	4-6	6	1	1
300-349	24	6	42	4	46	7-9	16	5	3
350-399	77	15	80	29	106	10-12	30	6	5
400-449	93	55	121	70	134	13-15	51	21	24
450-499	184	107	169	171	146	16-18	176	67	79
500-549	263	163	189	307	218	19-21	315	77	107
550-599	212	208	162	293	123	22-24	262	133	119
600-649	93	263	101	94	75	25-27	100	243	165
650-699	23	148	54	6	56	28-30	18	258	294
700-749	0	11	20	0	26	31-33	4	119	168
750-800	0	0	7	0	12	34-36	0	44	13
N	977	976	981	976	981		979	979	979
Mean	511.01	573.33	505.41	528.29	487.77		20.17	25.85	25.86
Std Dev	80.66	78.47	107.90	61.84	111.37		4.23	5.35	5.23

TABLE 3A

FULLY EXAMINED AND MEDICALLY QUALIFIED CANDIDATES  
 (Evaluated Using CEER)  
 Total N = 2717

		Frequency Distribution							
	<u>CEER</u>	<u>LPS</u>	<u>PAE</u>	<u>WMS</u>	<u>SAT-V</u>	<u>SAT-M</u>	<u>ENG-A</u>	<u>MATH-A</u>	<u>HSR</u>
200-249	1	0	41	0	2	0	0	1	62
250-299	8	0	47	1	16	9	11	1	56
300-349	29	13	99	7	43	22	67	16	115
350-399	94	34	171	26	158	50	189	45	258
400-449	239	103	314	118	286	112	355	148	337
450-499	439	234	468	358	484	218	450	254	411
500-549	602	489	534	737	542	381	540	424	510
550-599	632	642	453	947	509	555	442	504	374
600-649	424	742	339	415	375	608	301	543	261
650-699	176	405	159	78	211	435	139	323	183
700-749	62	34	59	12	76	246	84	226	79
750-799	11	3	33	0	14	80	14	106	71
N	2717	2699	2717	2699	2716	2716	2592	2591	2717
Mean	542.47	578.11	515.25	550.61	528.60	588.41	516.65	583.30	499.10
Std Dev	83.20	72.35	106.54	58.93	92.84	92.37	95.00	94.90	120.60

TABLE 3B

FULLY EXAMINED AND MEDICALLY QUALIFIED CANDIDATES  
(Evaluated Using ACT)  
Total N = 897

Frequency Distribution

	<u>ACEER</u>	<u>LPS</u>	<u>PAE</u>	<u>WMS</u>	<u>HSR</u>	<u>ACT-EN</u>	<u>ACT-MA</u>	<u>ACT-NA</u>
200-249	3	0	9	0	9	1	5	1
250-299	3	0	20	2	26	5	1	1
300-349	21	6	35	2	42	16	4	3
350-399	70	14	76	27	94	27	5	4
400-449	91	49	100	67	125	49	16	20
450-499	162	97	158	153	132	162	63	70
500-549	242	147	171	277	200	288	75	103
550-599	192	187	154	273	113	238	117	110
600-649	87	242	95	87	68	89	221	151
650-699	22	141	52	6	51	17	243	272
700-749	0	11	20	0	25	3	105	147
750-800	0	0	7	0	12	0	40	13
N	893	894	897	894	897	895	895	895
Mean	511.45	574.49	509.67	529.18	488.82	20.11	25.87	25.85
Std Dev	80.32	79.01	106.40	61.88	111.72	4.24	5.33	5.18

TABLE 4A

ADMITTED CLASS OF 1976  
(Evaluated Using CEER)  
Total N = 1094

Frequency Distribution

	<u>CEER</u>	<u>LPS</u>	<u>PAE</u>	<u>WMS</u>	<u>SAT-V</u>	<u>SAT-M</u>	<u>ENG-A</u>	<u>MATH-A</u>	<u>HSR</u>
200-249	0	0	0	0	0	0	0	0	8
250-299	0	0	0	0	0	0	0	0	9
300-349	0	0	0	0	4	0	6	0	17
350-399	2	0	21	0	19	1	22	0	62
400-449	22	7	103	1	65	5	97	15	89
450-499	82	39	187	13	173	29	172	43	134
500-549	233	122	259	145	252	112	257	133	241
550-599	349	282	216	609	244	209	254	229	190
600-649	267	377	161	275	184	311	166	276	156
650-699	106	242	90	49	103	239	70	192	103
700-749	29	25	36	2	44	150	42	147	45
750-800	4	0	19	0	6	38	8	59	40
N	1094	1094	1092	1094	1094	1094	1094	1094	1094
Mean	579.79	607.26	550.99	585.12	554.14	624.39	545.43	619.84	539.26
Std Dev	62.78	55.53	84.34	36.34	79.95	69.95	82.27	78.97	108.84

TABLE 4B

ADMITTED CLASS OF 1976  
(Evaluated Using ACT)  
Total N = 284  
Frequency Distribution

	<u>ACEER</u>	<u>LPS</u>	<u>PAE</u>	<u>WMS</u>	<u>HSR</u>	<u>ACT-EN</u>	<u>ACT-MA</u>	<u>ACT-NA</u>
200-249	0	0	0	0	1	0	0	0
250-299	0	0	0	0	0	0	0	0
300-349	0	0	0	0	2	0	0	0
350-399	0	0	3	0	11	0	0	1
400-449	2	5	20	0	22	4	0	0
450-499	31	9	43	2	33	26	0	8
500-549	77	25	56	40	76	101	3	12
550-599	110	54	81	180	48	102	23	22
600-649	53	102	37	61	37	40	62	47
650-699	11	83	28	1	31	10	118	115
700-749	0	6	11	0	16	1	54	72
750-800	0	0	4	0	7	0	24	7
N	284	284	283	284	284	284	284	284
Mean	562.55	616.14	560.08	578.38	547.08	21.95	28.92	28.19
Std Dev	50.07	60.37	82.36	30.22	98.16	3.01	3.10	3.74

TABLE 5A

DECLINERS  
(Evaluated Using CEER)  
Total N = 301

Frequency Distribution

	<u>CEER</u>	<u>LPS</u>	<u>PAE</u>	<u>WMS</u>	<u>SAT-V</u>	<u>SAT-M</u>	<u>ENG-A</u>	<u>MATH-A</u>	<u>HSR</u>
200-249	0	0	0	0	0	0	0	0	0
250-299	0	0	0	0	0	0	0	0	2
300-349	0	0	1	0	0	0	1	0	4
350-399	1	4	6	0	2	0	3	1	10
400-449	5	2	27	0	16	2	24	5	19
450-499	19	5	43	4	43	3	45	12	29
500-549	33	49	58	26	59	15	64	29	49
550-599	85	57	73	131	62	50	62	46	54
600-649	95	84	53	108	59	79	51	83	46
650-699	38	90	27	23	39	80	27	56	41
700-749	21	9	10	9	18	50	20	41	24
750-800	4	1	3	0	3	22	4	28	23
N	301	301	301	301	301	301	301	301	301
Mean	602.41	610.93	556.88	600.41	571.44	644.35	559.81	628.70	575.78
Std Dev	67.96	64.98	83.67	42.64	82.14	69.10	87.63	83.07	112.53

TABLE 5B  
DECLINERS  
(Evaluated Using ACT)  
N = 67  
Frequency Distribution

	<u>ACEER</u>	<u>LPS</u>	<u>PAE</u>	<u>WMS</u>	<u>HSR</u>		<u>ACT-EN</u>	<u>ACT-MA</u>	<u>ACT-NA</u>
200-249	0	0	0	0	1	1-3	0	0	0
250-299	0	0	0	0	1	4-6	0	0	0
300-349	0	0	0	0	1	7-9	0	0	0
350-399	0	0	2	0	2	10-12	0	0	0
400-449	1	0	1	0	3	13-15	1	0	0
450-499	5	4	8	0	8	16-18	1	0	2
500-549	15	4	14	8	13	19-21	18	1	3
550-599	21	12	14	33	11	22-24	27	3	2
600-649	18	17	13	22	10	25-27	15	10	8
650-699	7	26	8	4	7	28-30	5	22	29
700-749	0	4	5	0	7	31-33	0	20	20
750-800	0	0	2	0	3	34-36	0	11	3
N	67	67	67	67	67		67	67	67
Mean	578.43	628.21	584.08	593.93	558.51		23.21	29.91	28.85
Std Dev	55.60	60.54	88.29	34.67	116.79		2.91	3.34	3.71

TABLE 6A

FULLY QUALIFIED BUT NOT ADMITTED  
(Evaluated Using CEER)  
N=176  
Frequency Distribution

	<u>CEER</u>	<u>LPS</u>	<u>PAE</u>	<u>WMS</u>	<u>SAT-V</u>	<u>SAT-M</u>	<u>ENG-A</u>	<u>MATH-A</u>	<u>HSR</u>
200-249	0	0	0	0	0	0	0	0	1
250-299	0	0	0	0	0	0	0	0	0
300-349	0	0	0	0	0	0	0	0	5
350-399	0	1	2	0	2	0	6	0	16
400-449	1	4	26	0	10	0	14	5	30
450-499	25	19	45	3	29	7	38	12	42
500-549	79	49	53	101	39	21	54	38	44
550-599	64	42	21	70	51	66	36	52	22
600-649	5	47	18	1	32	52	18	48	12
650-699	2	14	9	1	12	22	9	15	3
700-749	0	0	0	0	1	7	1	6	1
750-800	0	0	2	0	0	1	0	0	0
N	176	176	176	176	176	176	176	176	176
Mean	540.35	557.18	519.81	546.34	546.40	594.90	524.68	576.99	481.76
Std Dev	36.33	60.84	72.62	16.65	67.81	55.88	70.49	62.87	80.36

TABLE 6B

FULLY QUALIFIED BUT NOT ADMITTED  
(Evaluated Using ACT)

N = 82

Frequency Distribution

	<u>ACEER</u>	<u>LPS</u>	<u>PAE</u>	<u>WMS</u>	<u>HSR</u>		<u>ACT-EN</u>	<u>ACT-MA</u>	<u>ACT-NA</u>
200-249	0	0	0	0	0	1-3	0	0	0
250-299	0	0	0	0	0	4-6	0	0	0
300-349	0	0	0	0	0	7-9	0	0	0
350-399	0	0	1	0	5	10-12	0	0	0
400-449	1	3	6	0	8	13-15	0	0	0
450-499	12	6	30	0	16	16-18	16	0	2
500-549	46	19	26	55	31	19-21	33	4	4
550-599	23	25	7	27	14	22-24	26	6	10
600-649	0	22	9	0	4	25-27	6	31	18
650-699	0	7	3	0	4	28-30	1	33	32
700-749	0	0	0	0	0	31-33	0	8	15
750-800	00	0	0	0	0	34-36	0	0	1
N	82	82	82	82	82		82	82	82
Mean	531.66	573.66	518.10	542.90	505.98		20.87	27.22	27.49
Std Dev	32.30	62.31	65.94	12.47	69.90		2.54	2.62	3.43

TABLE 7A

MINORITY CANDIDATES\*  
(Evaluated Using CEER)  
Total N = 353  
Frequency Distribution

	<u>CEER</u>	<u>LPS</u>	<u>PAE</u>	<u>WMS</u>	<u>SAT-V</u>	<u>SAT-M</u>	<u>ENG-A</u>	<u>MATH-A</u>	<u>HSR</u>
200-249	1	0	3	0	5	1	2	1	11
250-299	11	0	4	1	21	10	1	0	14
300-349	30	2	8	5	40	27	21	10	23
350-399	49	2	12	16	45	31	31	14	50
400-449	72	15	18	52	49	48	41	31	48
450-499	61	30	27	94	62	39	42	38	58
500-549	55	67	45	79	46	59	45	34	54
550-599	46	77	46	76	24	42	28	40	29
600-649	19	98	31	24	11	28	9	23	24
650-699	9	51	18	1	7	17	5	20	25
700-749	0	6	10	0	1	8	0	7	12
750-800	0	0	3	0	1	2	0	3	5
N	353	348	225	348	312	312	225	221	353
Mean	465.84	576.18	533.24	504.31	439.05	488.29	462.11	519.99	469.92
Std Dev	94.75	72.98	110.33	67.29	101.72	111.99	91.91	104.30	126.28

\* Includes those self-reported as Black, American Indian, Mexican American, Puerto Rican, Japanese American, or Chinese American.

TABLE 7B

MINORITY CANDIDATES \*  
(Evaluated Using ACT)  
Total = 72  
Frequency Distribution

	<u>ACEER</u>	<u>LPS</u>	<u>PAE</u>	<u>WMS</u>	<u>HSR</u>		<u>ACT-EN</u>	<u>ACT-MA</u>	<u>ACT-NA</u>
200-249	3	0	0	0	2	1-3	1	2	2
250-299	3	0	0	1	1	4-6	2	1	1
300-349	10	1	4	1	10	7-9	5	4	3
350-399	10	0	8	9	9	10-12	8	2	2
400-449	10	6	8	14	10	13-15	6	9	9
450-499	17	10	7	18	10	16-18	23	10	15
500-549	8	9	7	14	12	19-21	17	6	11
550-599	7	12	9	12	4	22-24	7	15	5
600-649	2	20	7	3	8	25-27	3	10	11
650-699	1	14	2	0	2	28-30	0	9	10
700-749	0	0	4	0	1	31-33	0	3	3
750-800	0	0	0	0	3	34-36	0	1	0
N	71	72	56	72	72		72	72	72
Mean	436.39	572.90	507.70	481.51	466.39		16.47	20.44	20.11
Std Dev	101.08	81.47	115.45	75.55	132.85		5.21	7.35	7.15

\* Includes those self-reported as Black, American Indian, Mexican American, Puerto Rican, Japanese American, or Chinese American.

TABLE 8A

NEGRO CADETS  
(Evaluated Using CEER)  
N = 43  
Frequency Distribution

	<u>CEER</u>	<u>LPS</u>	<u>PAE</u>	<u>WMS</u>	<u>SAT-V</u>	<u>SAT-M</u>	<u>ENG-A</u>	<u>MATH-A</u>	<u>HSR</u>
200-249	0	0	0	0	0	0	0	0	0
250-299	0	0	0	0	0	0	0	0	0
300-349	0	0	0	0	0	0	0	0	3
350-399	1	0	0	0	3	1	3	0	3
400-449	2	0	3	0	8	4	6	2	6
450-499	11	1	6	1	14	7	11	7	8
500-549	18	1	5	16	11	13	10	12	10
550-599	6	12	14	21	4	11	9	10	3
600-649	5	19	7	5	1	5	3	6	4
650-699	0	8	6	0	1	2	1	5	3
700-749	0	2	2	0	1	0	0	1	1
750-800	0	0	0	0	0	0	0	0	2
<b>N</b>	<b>43</b>	<b>43</b>	<b>43</b>	<b>43</b>	<b>43</b>	<b>43</b>	<b>43</b>	<b>43</b>	<b>43</b>
<b>Mean</b>	<b>520.95</b>	<b>619.26</b>	<b>571.95</b>	<b>555.54</b>	<b>491.56</b>	<b>528.70</b>	<b>503.02</b>	<b>553.02</b>	<b>505.12</b>
<b>Std Dev</b>	<b>52.10</b>	<b>47.80</b>	<b>79.84</b>	<b>30.95</b>	<b>70.05</b>	<b>68.87</b>	<b>71.30</b>	<b>70.76</b>	<b>113.65</b>

TABLE 8B

NEGRO CADETS  
(Evaluated Using ACT)

N = 7

Frequency Distribution

	<u>ACEER</u>	<u>LPS</u>	<u>PAE</u>	<u>WMS</u>	<u>HSR</u>		<u>ACT-EN</u>	<u>ACT-MA</u>	<u>ACT-NA</u>
200-249	0	0	0	0	0	1-3	0	0	0
250-299	0	0	0	0	0	4-6	0	0	0
300-349	0	0	0	0	0	7-9	0	0	0
350-399	0	0	0	0	0	10-12	0	0	1
400-449	0	0	0	0	0	13-15	1	0	0
450-499	3	0	2	1	2	16-18	3	0	1
500-549	1	1	0	2	0	19-21	1	0	1
550-599	2	1	2	3	0	22-24	2	3	1
600-649	1	2	1	1	2	25-27	0	2	1
650-699	0	3	0	0	2	28-30	0	1	2
700-749	0	0	2	0	0	31-33	0	1	0
750-800	0	0	0	0	1	34-36	0	0	0
N	7	7	7	7	7		7	7	7
Mean	527.71	622.57	596.71	563.07	601.43		18.57	26.00	22.29
Std Dev	66.34	47.60	115.33	40.87	111.27		2.94	3.87	6.24

TABLE 9A

USMAPS\* GRADUATES IN CLASS OF 1976  
(Evaluated Using CEER)

N = 157

Frequency Distribution

	<u>CEER</u>	<u>LPS</u>	<u>PAE</u>	<u>WMS</u>	<u>SAT-V</u>	<u>SAT-M</u>	<u>ENG-A</u>	<u>MATH-A</u>	<u>HSR</u>
200-249	0	0	0	0	0	0	0	0	3
250-299	0	0	0	0	0	0	0	0	6
300-349	0	0	0	0	0	0	0	0	6
350-399	0	0	0	0	0	1	1	0	16
400-449	10	1	1	0	0	0	6	1	34
450-499	16	6	9	3	27	3	20	2	30
500-549	49	23	24	30	45	20	39	13	32
550-599	50	46	30	95	38	33	42	38	17
600-649	22	48	47	26	27	50	34	41	8
650-699	9	23	26	3	11	36	7	25	3
700-749	1	10	12	0	2	12	6	28	2
750-800	0	0	8	0	1	2	2	9	0
N	157	157	157	157	157	157	157	157	157
Mean	552.85	601.85	614.33	573.69	551.03	612.19	561.10	633.39	459.87
Std Dev	61.21	58.94	76.01	34.63	67.09	64.36	71.91	73.53	98.06

\*United States Military Academy Preparatory School

TABLE 9B  
 USMAPS\* GRADUATES IN CLASS OF 1976  
 (Evaluated Using ACT)  
 N=1

	<u>ACEER</u>	<u>LPS</u>	<u>PAE</u>	<u>WMS</u>	<u>HSR</u>	<u>ACT-EN</u>	<u>ACT-MA</u>	<u>ACT-NA</u>
SCORE	594	680	738	634.2	450	24	32	33

\*United States Military Academy Preparatory School

TABLE 10A

RECRUITED ATHLETES\* IN THE CLASS OF 1976  
(Evaluated Using CEER)  
N = 251  
Frequency Distribution

	<u>CEER</u>	<u>LPS</u>	<u>PAE</u>	<u>WMS</u>	<u>SAT-V</u>	<u>SAT-M</u>	<u>ENG-A</u>	<u>MATH-A</u>	<u>HSR</u>
200-249	0	0	0	0	0	0	0	0	3
250-299	0	0	0	0	0	0	0	0	5
300-349	0	0	0	0	1	0	2	0	6
350-399	1	0	3	0	10	0	10	0	24
400-449	15	1	14	1	26	2	35	9	39
450-499	45	6	16	7	60	13	57	19	43
500-549	76	14	40	61	61	47	61	46	55
550-599	62	45	58	116	49	52	49	71	31
600-649	37	91	50	58	30	62	26	43	25
650-699	12	82	39	8	10	53	7	37	11
700-749	3	13	17	0	4	16	3	18	4
750-800	0	0	14	0	0	6	1	8	5
N	251	251	251	251	251	251	251	251	251
Mean	544.92	629.06	595.50	575.22	521.52	601.12	514.15	589.76	493.11
Std Dev	65.74	52.76	89.39	40.80	75.11	72.88	77.33	79.59	107.98

\* Cadets who were contacted by the Army Athletic Association at some time during the admissions process.

TABLE 10B

RECRUITED ATHLETES\* IN THE CLASS OF 1976  
(Evaluated Using ACT)

N = 65

Frequency Distribution

	<u>ACEER</u>	<u>LPS</u>	<u>PAE</u>	<u>WMS</u>	<u>HSR</u>		<u>ACT-EN</u>	<u>ACT-MA</u>	<u>ACT-NA</u>
200-249	0	0	0	0	0	1-3	0	0	0
250-299	0	0	0	0	0	4-6	0	0	0
300-349	0	0	0	0	1	7-9	0	0	0
350-399	0	0	0	0	4	10-12	0	0	0
400-449	0	1	4	0	7	13-15	3	0	0
450-499	18	0	8	1	15	16-18	10	0	0
500-549	21	2	8	14	14	19-21	28	2	3
550-599	15	11	19	35	7	22-24	20	13	5
600-649	11	22	10	15	5	25-27	4	15	8
650-699	0	25	9	0	7	28-30	0	23	11
700-749	0	4	5	0	4	31-33	0	9	30
750-800	0	0	2	0	1	34-36	0	3	8
N	65	65	65	65	65		65	65	65
Mean	537.23	640.22	587.94	573.20	521.38		20.65	27.52	26.89
Std Dev	55.87	55.82	89.47	37.02	100.93		2.84	3.59	3.85

\* Cadets who were contacted by the Army Athletic Association at some time during the admissions process.

TABLE 11A

MEANS OF ADMISSION VARIABLES FOR THE CLASS OF 1976  
(Evaluated Using CEER)

	<u>CEER</u>	<u>LPS</u>	<u>PAE</u>	<u>WMS</u>	<u>SAT-V</u>	<u>SAT-M</u>	<u>ENG-A</u>	<u>MATH-A</u>	<u>HSR</u>
All Cand. N=5269	520.02	567.63	509.82	532.20	509.10	567.58	508.62	572.90	484.52
Fully Examined Cand. N=2943	541.23	575.69	511.63	548.79	527.92	586.27	516.28	581.15	498.99
Fully Examined & Med. Qual. Cand. N=2717	542.47	578.11	515.25	550.61	528.60	588.41	516.65	583.30	499.10
Adm. Cdts N=1094	579.79	607.26	550.99	585.12	554.14	624.39	545.43	619.84	539.26
Decliners N=301	602.41	610.93	556.88	600.41	571.44	644.35	559.81	628.70	575.78
Fully Qual., but Not Adm. N=176	540.35	567.18	519.81	546.34	546.40	594.90	524.68	576.99	481.76
Minority Cand. N=353	465.84	576.18	533.24	504.31	439.05	488.29	462.11	519.99	469.92
Negro Mem C1 76 N=43	520.95	619.26	571.95	555.54	491.56	528.70	503.02	553.02	505.12
USMAPS Grads in C1 76 N=43	552.85	601.85	614.33	573.69	551.03	612.19	561.10	633.39	459.97
Recruited Athletes in C1 76 N=251	544.92	629.06	595.50	575.22	521.52	601.12	514.14	589.76	493.11

TABLE

MEANS OF ADMISSION VARIABLES FOR THE CLASS OF 1976  
(Evaluated Using ACT)

	<u>ACEER</u>	<u>LPS</u>	<u>PAE</u>	<u>WMS</u>	<u>HSR</u>	<u>ACT-EN</u>	<u>ACT-MA</u>	<u>ACT-NA</u>
All Cand. N=1243	505.00	568.75	501.95	522.55	480.56	20.04	25.53	25.52
Fully Examined Candi- dates N=981	511.01	573.33	505.41	528.29	487.77	20.17	25.85	25.86
Fully Examined & Med. Qual. Cand. N=897	511.45	574.49	509.67	529.18	488.82	20.11	25.87	25.85
Adm Cdts N=284	562.55	616.14	560.08	578.38	547.08	21.95	28.92	28.19
De- cliners N=67	578.43	628.21	584.08	593.93	558.51	23.21	29.91	28.85
Fully Qual. but Not Adm. N=82	531.66	573.66	518.10	542.90	505.98	20.87	27.22	27.49
Minority Cand. N=72	436.39	572.90	507.70	481.51	466.39	16.47	20.44	20.11
Negro Members Cl 76 N=7	527.71	622.57	596.71	563.07	601.43	18.57	26.00	22.29
USMAPS Grads in Cl 76 N=1	594	680	738	634.2	.450	24	32	33
Recruited Athletes in Cl 76 N=65	537.23	640.22	587.94	573.20	521.38	20.65	27.52	26.89

SELECTED REFERENCES FOR  
INTERPRETATIONS OF TREND DATA ON USMA CLASSES

Academic Board, The Academic Board Directive on Qualifications of Candidates. (FOUO) Office of the Director of Admissions and Registrar, US Military Academy, West Point, NY, February, 1968.

Bridges, Claude F., Analysis of the Characteristics of the Class of 1971. Office of Research, US Military Academy, West Point, NY, March 1968.

Bridges, Claude F., Candidates Who Declined Appointment to USMA. Office of Research, US Military Academy, West Point, New York, July 1969.

Kraft, John D., Distribution of CEER and PAE Scores in the Candidate and Entering Classes of 1971 and 1972. (FOUO) Office of Research, US Military Academy, West Point, NY, February 1969.

Office of Research, Characteristics of the Classes of 1965 through 1976. Office of Institutional Research, US Military Academy, West Point, NY, 1962-1972.

Office of Research, Staff Comments on General Westmoreland's Letter of 29 November 1968. Office of Research, US Military Academy, West Point, NY, March 1969.

Houston, John W., Background and Predicted Success of Cadets in the Class of 1973. Office of Research, US Military Academy, West Point, NY, May 1970.

Houston, John W., Trends in Admission Variables through the Class of 1975. Office of Institutional Research, US Military Academy, West Point, NY, December 1971.

UNCLASSIFIED

Security Classification

DOCUMENT CONTROL DATA - R & D

(Security classification of title, body of abstract and indexing annotation must be entered when the overall report is classified)

1. ORIGINATING ACTIVITY (Corporate author) Office of Institutional Research United States Military Academy West Point, New York 10996		20. REPORT SECURITY CLASSIFICATION Unclassified	
21. GROUP			
3. REPORT TITLE ADMISSION SCORES OF THE USMA CLASS OF 1976 (Candidates and Cadets)			
4. DESCRIPTIVE NOTES (Type of report and inclusive dates)			
5. AUTHOR(S) (First name, middle initial, last name) Mr. John W. Houston			
6. REPORT DATE October 1972		78. TOTAL NO. OF PAGES 31	79. NO. OF REFS 8
88. CONTRACT OR GRANT NO.		92. ORIGINATOR'S REPORT NUMBER(S) 9B1.01-73-010	
b. PROJECT NO.		93. OTHER REPORT NO(S) (Any other numbers that may be assigned this report)	
c.			
d.			
10. DISTRIBUTION STATEMENT <del>REPRODUCTION OF THIS DOCUMENT IN WHOLE OR IN PART MUST HAVE PRIOR APPROVAL OF THE SUPERINTENDENT, UNITED STATES MILITARY ACADEMY, WEST POINT, N. Y.</del>			
11. SUPPLEMENTARY NOTES		12. SPONSORING MILITARY ACTIVITY United States Military Academy West Point, New York 10996	
13. ABSTRACT The purpose of this report is to bring together, for research and information purposes, the summary statistics of the admission scores of the candidates and cadets - Class of 1976. The distributions of scores are shown for six (6) categories of candidates, including decliners and minority group members; and four (4) categories of admitted cadets, including Negro members, graduates of the U.S. Military Academy Preparatory School, and recruited athletes.			

DD FORM 1473

REPLACES DD FORM 1473, 1 JAN 64, WHICH IS OBSOLETE FOR ARMY USE.

UNCLASSIFIED

Security Classification

UNCLASSIFIED

Security Classification

14 KEY WORDS	LINK A		LINK B		LINK C	
	ROLE	WT	ROLE	WT	ROLE	WT
Class of 1976 Data Analysis Class Characteristics Fourth Class Admission Scores College Board Scores American College Testing Program						

UNCLASSIFIED

Security Classification