

AD-A077 785 MILITARY ACADEMY WEST POINT NY OFFICE OF THE DIRECTO--ETC F/G 5/9
CHARACTERISTICS OF THE CLASS OF 1978, (U)

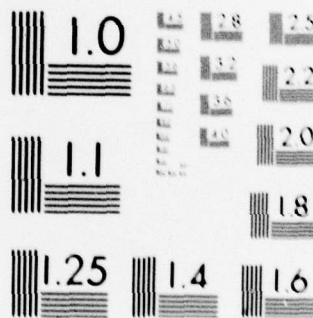
UNCLASSIFIED 9B1.01-75-007

NL

| OF |
AD
A077785



END
DATE
FILMED
1-80
DDC



MICROCOPY RESOLUTION TEST CHART
 NATIONAL BUREAU OF STANDARDS-1963-A

LEVEL

①

75-007

AD A 077785



UNITED STATES MILITARY ACADEMY

WEST POINT · NEW YORK

WDC FILE COPY

CHARACTERISTICS OF THE CLASS OF 1978

DDC
RECEIVED
DEC 10 1979
RECEIVED

DISTRIBUTION STATEMENT A

Approved for public release,
Distribution Unlimited

OFFICE OF THE DIRECTOR OF INSTITUTIONAL RESEARCH

OCTOBER 1974

DUTY-HONOR-COUNTRY

79 20 9 206

CHARACTERISTICS OF THE CLASS OF 1978

Report No. 9B1.01-75-007

Project No. 183

Prepared by: Mr. John W. Houston

October 1974

Accession For	
NTIS G.R&I	<input checked="" type="checkbox"/>
DDC TAB	<input type="checkbox"/>
Unannounced	<input type="checkbox"/>
Justification	
By	
Distribution/	
Availability Codes	
Dist	Avail and/or special

ABSTRACT

This report presents the biographical characteristics and achievements of the 1435 cadets who entered the United States Military Academy in the Class of 1978.

NOTE: Any conclusions in this report are not to be construed as official U. S. Military Academy or Department of the Army positions unless so designated by other authorized documents.

DISTRIBUTION: This document is prepared for official purposes only. Its contents may not be reproduced or distributed (in whole or in part) without specific permission of the Superintendent, U. S. Military Academy in each instance.

OFFICE OF THE
DIRECTOR OF INSTITUTIONAL RESEARCH
UNITED STATES MILITARY ACADEMY
WEST POINT, NEW YORK 10996

DISTRIBUTION STATEMENT A
Approved for public release;
Distribution Unlimited

406 247

JED

TABLE OF CONTENTS

	Page
PREFACE	1
TABLE	
1 Distribution of Scores on Academic Qualification Measures (CEER Components)	2
2 Distribution of Scores on Whole Man Score Components, (admitted by CEER)	3
3 Distribution of Whole Man Scores (admitted by CEER)	4
4 Distribution of Scores on Academic Qualification Measures (ACEER Components)	5
5 Distribution of Scores on High School Rank and Whole Man Score Components (admitted by ACEER)	6
6 Distribution of Whole Man Scores (admitted by ACEER)	6
7 Means and Standard Deviations of All Cadets with Scores	7
8 Distribution of Height, Weight and Age	8
9 High School Characteristics	9
10 Subject Exposure	9
11 Preparatory School Attendance	10
12 Awards and Scholarships	10
13 Scholarships	11
14 Clubs and Positions Held of Awards Obtained	12,13
15 Nominations and Appointments	14
16 Military Service and Awards	14
17 Father's Military Status, Rank, and Component	15
18 Class Year of Fathers who are USMA Graduates	16
19 Sport Participation	16
20 Varsity Sport and Type Participation	17,18
21 Miscellaneous	19,20
APPENDIX: Questionnaire	21
REPORT DOCUMENTATION PAGE (DD Form 1473)	30

PREFACE

This report presents the biographical characteristics and achievements of the 1435 cadets who entered the Class of 1978. A separate report will compare selected characteristics of this class with previous classes. The admission scores listed in Tables 1, 2 and 3 are for the 1033 cadets whose admission was based on the CEER, while Tables 4, 5 and 6 are for the 402 cadets whose admission was based on American College Test scores. The following abbreviations, explanations and definitions of terms apply to this report.

CEER	A statistically derived weighted composite score of two College Entrance Examination Board tests (Scholastic Aptitude Test-Verbal, Scholastic Aptitude Test-Mathematics) and a standardized high school rank score. English Composition and Mathematics Achievement were not used in CEER for the Class of 1978.
High School Rank	This is a score derived by converting the actual high school rank to a standard score, using a formula developed by the Educational Testing Service.
Whole Man Score	This is a weighted composite score of the CEER or ACEER, the Physical Aptitude Examination score and the Leadership Potential Score.
Physical Aptitude Examination Score	This is a standardized score developed to measure physical capabilities.
Leadership Potential Score	This is a score derived from the ratings of the candidate by his secondary school teachers and evaluations by admissions officials of his type of participation in athletic and other school and community activities.
ACT	American College Testing Program.
ACEER	A statistically derived weighted composite score of ACT tests and High School Rank converted to the 200-800 range of the CEER.

TABLE 1

DISTRIBUTION OF SCORES ON ACADEMIC QUALIFICATION MEASURES (CEER COMPONENTS)
(For those admitted by use of CEER)

Score Ranges	Scholastic Verbal		Aptitude Test Mathematics		English* Composition		Mathematics* Achievement		High School Rank Score	
	N	Cum %	N	Cum %	N	Cum %	N	Cum %	N	Cum %
750-800	5	100%	54	100%	8	100%	37	100%	54	100%
700-749	46	99	186	95	25	99	87	94	52	95
650-699	118	95	242	77	43	95	133	81	113	90
600-649	195	84	258	53	99	89	156	61	152	79
550-599	240	65	161	28	126	74	132	38	182	64
500-549	209	42	98	13	145	55	66	18	210	46
450-499	149	21	31	3	124	33	42	8	110	26
400-449	53	7	3	0	66	14	13	2	72	15
350-399	17	2	0	0	23	5	1	0	58	9
300-349	1	0	0	0	7	1	0	0	19	3
250-299	0	0	0	0	0	0	0	0	7	1
200-249	0	0	0	0	0	0	0	0	4	0
Total	1033		1033		666		667		1033	
Mean	561.95		635.01		538.33		619.03		551.96	
S.D.	80.44		73.18		88.84		82.90		111.57	

*Not used in calculating CEER for Class of 1978.

TABLE 2

DISTRIBUTION OF SCORES ON WHOLE MAN SCORE COMPONENTS
(For those admitted by use of CEER)

Score Ranges	Academic (CEER)		Physical Aptitude (PAE)		Leadership Potential (LPS)	
	N	Cum %	N	Cum %	N	Cum %
750-800	10	100%	3	100%	3	100%
700-749	64	99	20	100	46	100
650-699	159	93	63	98	183	95
600-649	276	77	155	92	282	78
550-599	273	51	230	77	224	50
500-549	158	24	263	54	177	29
450-499	69	9	223	28	87	11
400-449	23	2	70	7	24	3
350-399	1	0	3	0	7	1
300-349	0	0	1	0	0	0
250-299	0	0	0	0	0	0
Total	1033		1031		1033	
Mean	596.58		541.15		591.13	
S.D.	69.42		70.78		71.94	

TABLE 3

DISTRIBUTION OF WHOLE MAN SCORES
(For those admitted by use of CEER)

<u>Score Ranges</u>	<u>N</u>	<u>Cum %</u>
7250-7500	0	100%
7000-7249	6	100
6750-6999	16	99
6500-6749	41	98
6250-6499	123	94
6000-6249	200	82
5750-5999	309	63
5500-5749	181	33
5250-5499	102	15
5000-5249	35	5
4750-4999	15	2
4500-4749	5	0
4250-4499	0	0
Total	1033	
Mean	5893.60	
S.D.	399.10	

TABLE 4

DISTRIBUTION OF SCORES ON ACADEMIC QUALIFICATION MEASURES (ACEER COMPONENTS)
(For those admitted by use of ACEER)

Scale	English Test Scores			Mathematics Test Scores			Natural Science Test Scores		
	USMA		National Norm*	USMA		National Norm*	USMA		National Norm*
	Frequency	Percentile	Percentile	Frequency	Percentile	Percentile	Frequency	Percentile	Percentile
36	0	100		18	100	99	0	100	
35	0	100		14	96	99	5	100	
34	0	100		29	92	99	19	99	
33	0	100		25	85	98	33	94	99
32	2	100	99	20	79	97	58	86	98
31	6	100	99	35	74	95	39	71	95
30	5	98	99	56	65	92	59	62	92
29	6	97	99	55	51	88	38	47	87
28	12	95	99	37	37	83	31	38	81
27	21	92	98	32	28	78	26	30	75
26	23	87	97	29	20	72	17	23	69
25	40	81	95	19	13	67	19	19	64
24	37	71	91	17	8	62	11	14	60
23	46	62	86	8	4	59	15	12	56
22	54	51	80	3	2	54	7	8	51
21	38	37	73	3	1	50	5	6	47
20	35	28	65	1	1	45	5	5	42
19	29	19	55	1	0	39	6	4	35
18	12	12	46	0	0	34	3	2	29
17	12	9	37	0	0	28	4	1	24
16	13	6	30	0	0	23	1	1	20
15	2	3	25	0	0	18	0	0	15
14	3	2	21	0	0	13	0	0	11
13	4	1	17	0	0	10	0	0	8
12	1	1	15	0	0	8	0	0	5
11	0	0	12	0	0	7	0	0	4
10	0	0	10	0	0	5	0	0	3
1-9	1		7	0		4	1		2
Total	402			402			402		
Mean	22.46	17.8		29.45		21.1	28.76		21.7
S.D.	3.67	5.2		3.45		6.6	4.02		6.2

*National Norms for men at 965 Colleges (all types). As an example, 28% of the 402 cadets in the Class of 78 who were admitted by the ACT English test had a score of 20 or lower, while 65% of the males in the college national norms had scores of 20 or lower.

TABLE 5
DISTRIBUTION OF SCORES ON HIGH SCHOOL RANK AND WHOLE MAN SCORE COMPONENTS
(For those admitted by use of ACEER)

Score Ranges	High School Rank (HSR)		Physical Aptitude (PAE)		Leadership Potential (LPS)		ACEER	
	N	Percentile	N	Percentile	N	Percentile	N	Percentile
750-800	24	100	1	100	1	100	3	100
700-749	27	94	4	100	28	100	18	99
650-699	64	87	28	99	83	93	67	95
600-649	53	71	61	92	113	72	106	78
550-599	71	58	88	77	81	44	112	52
500-549	91	41	106	55	59	24	59	24
450-499	37	18	84	28	23	9	32	9
400-449	17	9	28	7	13	3	5	1
350-399	13	4	1	0	1	0	0	0
300-349	5	1	0	0	0	0	0	0
250-299	0	0	0	0	0	0	0	0
200-249	0	0	0	0	0	0	0	0
Total	435		401		402		402	
Mean	573.71		540.69		602.12		595.76	
S.D.	103.78		69.40		72.25		66.53	

TABLE 6
DISTRIBUTION OF WHOLE MAN SCORES
(For those admitted by use of ACEER)

Score Ranges	Number	Percentile
7000-7249	1	100
6750-6999	7	100
6500-6749	22	98
6250-6499	51	93
6000-6249	85	80
5750-5999	118	59
5500-5749	60	29
5250-5499	39	14
5000-5249	16	5
4750-4999	2	1
4500-4749	0	0
4250-4499	1	0
Total	402	
Mean	5921.64	
S.D.	395.22	

TABLE 7

MEANS AND STANDARD DEVIATIONS OF ALL CADETS WITH SCORES*

	<u>WMS</u>	<u>HSR</u>	<u>LPS</u>	<u>PAE</u>	
N	1435	1435	1435	1432	
Mean	5901.46	558.05	594.21	541.02	
S.D.	398.01	109.38	72.03	70.39	
	<u>CEER**</u>	<u>SAT-V</u>	<u>SAT-M</u>	<u>Eng-A</u>	<u>Math-A</u>
N	1368	1264	1264	759	761
Mean	591.67	553.82	627.03	535.61	616.12
S.D.	70.12	83.34	76.65	88.83	83.32
	<u>ACEER</u>	<u>ACT-En</u>	<u>ACT-Ma</u>	<u>ACT-NS</u>	
N	647	647	647	647	
Mean	580.07	22.05	28.50	28.32	
S.D.	76.82	3.96	4.12	4.37	

*Includes both College Board and American College Test scores if cadet took both tests, even though both were not used for evaluation.

**Number with CEER score is greater than those with CEER components, as many of the candidates with HSR and Preliminary SAT scores were given an estimated CEER.

TABLE 8

DISTRIBUTION OF HEIGHT, WEIGHT AND AGE

Height			Weight			Age		
Inches	No.	%	Pounds	No.	%	Years/Months	No.	%
82-83	0	0.0%	270-279	1	0.1%	21/6 - 21/11	13	0.9%
80-81	0	0.0	260-269	0	0.0	21/0 - 21/5	14	1.0
78-79	1	0.1	250-259	1	0.1	20/6 - 20/11	29	2.0
76-77	43	3.0	240-249	0	0.0	20/0 - 20/5	34	2.4
74-75	113	7.9	230-239	6	0.4	19/6 - 19/11	44	3.1
72-73	304	21.2	220-229	14	1.0	19/0 - 19/5	78	5.4
70-71	435	30.3	210-219	31	2.2	18/6 - 18/11	287	20.0
68-69	338	23.6	200-209	46	3.2	18/0 - 18/5	499	34.8
66-67	156	10.9	190-199	80	5.6	17/6 - 17/11	415	28.9
64-65	39	2.7	180-189	111	7.7	17/0 - 17/5	22	1.5
62-63	6	0.4	170-179	165	11.5			
60-61	0	0.0	160-169	236	16.4			
58-59	0	0.0	150-159	275	19.2			
			140-149	249	17.4			
			130-139	137	9.5			
			120-129	62	4.3			
			110-119	18	1.3			
			100-109	3	0.2			
Total	1435	100	Total	1435	100	Total	1435	100
Mean	70.27		Mean	161.43		Mean	18 yrs 5 mo	
S.D.	2.62		S.D.	23.18				

TABLE 9
HIGH SCHOOL CHARACTERISTICS

	Number	Percent
High School Graduate		
Yes.....	1433	99.9%
No.....	2	0.1
Type of High School in which Senior Year was Completed		
Did not complete senior year.....	2	0.1
Public (Include HS in foreign country).....	1214	84.7
Private (Non-Military).....	39	2.7
Private (Military).....	180	12.5
Rank in Graduating Class		
Did not graduate.....	2	0.1
Top Fifth.....	1019	71.0
Second Fifth.....	290	20.2
Third Fifth.....	99	6.9
Fourth Fifth.....	20	1.4
Bottom Fifth.....	5	0.4
Selected as Valedictorian (First in the Class).....	81	5.6
Selected as Salutatorian (Second in the Class).....	56	3.9

TABLE 10
SUBJECT EXPOSURE

	Number	Percent
Studied the Following Mathematics and Science Course(s)		
Physics.....	1119	78.0%
Chemistry.....	1334	93.0
Biology.....	1336	93.1
General Science.....	1025	71.4
Trigonometry.....	1269	88.4
Calculus.....	564	39.3
Studied the Following Foreign Language(s)		
Spanish.....	545	38.0
French.....	422	29.4
German.....	328	22.9
Latin.....	213	14.8
Russian.....	20	1.4
Portuguese.....	2	0.1
Chinese.....	5	0.4
Other.....	30	2.1
Completed an Honors Course in Any Subject.....	738	51.4

TABLE 11

PREPARATORY SCHOOL ATTENDANCE

<u>Name of School</u>	<u>Number</u>	<u>Percent</u>
Millard School	4	0.3%
USMA Prep School	187	13.0
Other	14	1.0
Total Prep Schools	205	14.3
No Prep School	1230	85.7
Total	1435	100.0

TABLE 12

AWARDS AND SCHOLARSHIPS

	Number	Percent
Received Following Awards		
National Honor Society.....	770	53.6%
Bausch and Lomb Science Award.....	31	2.2
American Legion Award.....	112	7.8
Other Community Awards.....	379	26.4
Boy's State Delegate.....	302	21.0
Other National Awards.....	155	10.8
Took the National Merit/Achievement Scholarship Examination		
No.....	744	51.8
Yes, but not qualified.....	390	27.2
Yes, and received commendation.....	206	14.4
Yes, was semi-finalist.....	25	1.7
Yes, was finalist.....	44	3.1
Yes, was merit scholar.....	26	1.8

TABLE 13
SCHOLARSHIPS

	Number	Percent
Number of Academic Scholarships		
None.....	843	58.8%
One.....	278	19.4
Two.....	146	10.2
Three.....	82	5.7
Four.....	42	2.9
Five.....	17	1.2
Six.....	10	0.7
Seven.....	1	0.1
Eight.....	0	0.0
Nine or more.....	16	1.1
Number of Athletic Scholarships		
None.....	1301	90.7
One.....	66	4.6
Two.....	26	1.8
Three.....	9	0.6
Four.....	6	0.4
Five.....	8	0.7
Six.....	6	0.4
Seven.....	1	0.1
Eight.....	0	0.0
Nine or more.....	12	0.8
Received the Following Military Scholarships*		
Army ROTC Scholarship.....	198	13.8
Navy ROTC Scholarship.....	91	6.3
Air Force ROTC Scholarship.....	41	2.9

*May be more than one.

TABLE 14-1
CLUBS AND POSITIONS HELD OR AWARDS OBTAINED

	Number	Percent
Elected or Appointed to Following High School Positions		
President of High School Senior Class.....	68	4.7%
Senior Class Officer (Other than Pres).....	167	11.6
President, Student Body.....	62	4.3
President, High School Class (Other than Senior Class).....	136	9.5
President, Student Council.....	88	6.1
Participated in or Held Following High School Positions*		
Debating or Forensic Society.....	135	9.4
Thespian or Dramatic Club.....	153	10.7
Glee Club.....	126	8.8
High School Band.....	254	17.7
Staff, School Paper.....	203	14.1
Editor or Co-Editor, School Paper.....	90	6.3
Staff, Yearbook or Annual.....	163	11.4
Editor or Co-Editor, Yearbook or Annual.....	73	5.1
Was a Member of the Following Number of Clubs which were Sponsored by the High School		
None.....	74	5.2
One.....	155	10.8
Two.....	258	18.0
Three.....	276	19.2
Four.....	246	17.1
Five.....	178	12.4
Six.....	102	7.1
Seven.....	69	4.8
Eight.....	17	1.2
Nine or more.....	60	4.2
Was President, Vice-President, or Equivalent of the Following Number of Clubs which were Sponsored by High School		
None.....	787	54.8
One.....	369	25.7
Two.....	183	12.7
Three.....	62	4.3
Four.....	25	1.7
Five or more.....	9	0.6
Was a Member of the Following Number of Clubs which were Not Sponsored by High School		
None.....	438	30.5
One.....	467	32.5
Two.....	323	22.5
Three.....	128	8.9
Four.....	47	3.3
Five.....	22	1.5
Six.....	4	0.3
Seven.....	2	0.1
Eight.....	0	0.0
Nine or more.....	4	0.3

*May be more than one.

TABLE 14-2

CLUBS AND POSITIONS HELD OR AWARDS OBTAINED

	Number	Percent
Was President, Vice President or Equivalent of the Following		
Number of Non-School Clubs		
None.....	1013	70.6%
One.....	320	22.3
Two.....	82	5.7
Three.....	16	1.1
Four.....	2	0.1
Five or more.....	2	0.1
Number of Years of Debate Experience		
One.....	129	9.0
Two.....	36	2.5
Three.....	15	1.1
Four.....	14	1.0
The Highest Scout Progress Award Earned		
Never a Scout.....	711	49.5
Scout.....	62	4.3
Tenderfoot.....	81	5.6
2nd Class.....	128	8.9
1st Class.....	126	8.8
Star.....	79	5.5
Life.....	64	4.5
Eagle.....	184	12.8
Presently or Has Been One of the Following*		
Boy Scout.....	723	50.4
Explorer Scout.....	194	13.5
Sea Scout.....	31	2.2
Air Scout.....	14	1.0
Camp Counselor.....	153	10.7
Order of the Arrow.....	275	19.2

*May be more than one.

TABLE 15
NOMINATIONS AND APPOINTMENTS

	Number	Percent
Federal Academies where Nomination was Attempted*		
Naval Academy.....	348	24.3%
Air Force Academy.....	345	24.0
Coast Guard Academy.....	126	8.8
Merchant Marine Academy.....	79	5.5
Applied to USMA Only.....	907	63.2
Federal Academies where Appointment was Received*		
Naval Academy.....	45	3.1
Air Force Academy.....	73	5.1
Coast Guard Academy.....	43	3.0
Merchant Marine Academy.....	30	2.1
USMA Only.....	1270	88.5
Years Attempted to Enter USMA (including this year)		
One.....	1211	84.4
Two.....	196	13.7
Three.....	17	1.2
Four or more.....	7	0.5
First Choice of Schools Was:		
US Military Academy.....	1198	83.5
US Air Force Academy.....	76	5.3
US Naval Academy.....	54	3.8
US Coast Guard Academy.....	10	0.7
US Merchant Marine Academy.....	0	0.0
A Civilian Liberal Arts College.....	42	2.9
A Civilian Engineering Technical College.....	31	2.2
Another Type of College.....	14	1.0
No Response.....	10	0.7

TABLE 16
MILITARY SERVICE AND AWARDS

	Number	Percent
Served on Active Duty with the Armed Forces		
No.....	1196	83.3%
Yes, with the Army.....	230	16.0
Yes, with the Navy.....	3	0.2
Yes, with the Air Force.....	1	0.1
Yes, with the Marine Corps.....	1	0.1
Yes, with the Army National Guard.....	1	0.1
Received the Following Specialty Badges or Awards*		
Parachutist Wings.....	14	1.0
Ranger Tab.....	14	1.0
Marksmanship Badge.....	106	7.4
Sharpshooter's Badge.....	115	8.0
Expert Rifleman's Badge.....	89	6.2
Expert Infantryman's Badge.....	8	0.6
Combat Infantryman's Badge.....	3	0.2
Awarded the Purple Heart.....	2	0.1
Other Badges or Awards.....	74	5.2

*May be more than one.

TABLE 17
FATHER'S MILITARY STATUS, RANK, AND COMPONENT

	Number	Percent
Father's Past Military Service and Current Status		
No Military Service or Don't Know.....	366	25.5%
Career in Military Service Terminated for Physical Disability.....	25	1.7
Not in Reserve Status, Served Two or More Tours on Active Duty.....	58	4.0
Served 20 Years or More and Retired.....	169	11.8
Served Only During a War or for One Peacetime Tour.....	622	43.3
Now on Full Time Active Duty, in a Regular or Reserve Component.....	111	7.7
Inactive Reserve Status, Served Two or More Tours on Active Duty.....	32	2.2
Now in Reserves or National Guard.....	23	1.6
Died While on Active Duty.....	29	2.0
Father's Military Rank--Current or Past		
Did Not Serve.....	209	14.6
Officer, Never Enlisted.....	164	11.4
Enlisted Only.....	734	51.2
Enlisted and Officer.....	197	13.7
Don't Know.....	131	9.1
Father's Highest Grade**		
E1 - E3 (Private or PFC).....	159	11.1
E4 - E6 (Corporal through Staff Sergeant).....	322	22.4
E7 - E9 (Platoon Sergeant through Sergeant Major).....	164	11.4
Warrant Officer.....	27	1.9
Lieutenant or Captain.....	112	7.8
Major.....	34	2.4
Lieutenant Colonel.....	106	7.4
Colonel.....	59	4.1
General Officer.....	9	0.6

**Army Grade or AF, Navy & Marine Corps equivalent.

TABLE 18

CLASS YEAR OF FATHERS WHO ARE USMA GRADUATES

<u>Year</u>	<u>No.</u>	<u>Year</u>	<u>No.</u>
1955	7	1946	7
1954	10	1945	1
1953	6	1944	0
1952	4	1943	0
1951	2	1942	1
1950	4	1941	2
1949	2	1940	0
1948	1	1939	1
1947	1	1932	1

Total 50

TABLE 19

SPORT PARTICIPATION

	Number	Percent
Participated in Varsity Athletics		
Yes.....	1172	81.7%
No.....	263	18.3
Earned Varsity Letter		
Yes.....	1137	79.2
No.....	298	20.8
Varsity Team Captain		
Yes.....	499	34.8
No.....	936	65.2

TABLE 20-1

VARSITY SPORT AND TYPE PARTICIPATION

Sport	Participants*		Captains**		All-Conf		All-State	
	N	%	N	%	N	%	N	%
Baseball	269	18.7%	52	3.6%	39	2.7%	9	0.6%
Basketball	325	22.7	70	4.9	31	2.2	6	0.4
Cross Country	226	15.8	62	4.3	22	1.5	6	0.4
Football	636	44.3	178	12.4	165	11.5	42	2.9
Golf	75	5.2	18	1.3	7	0.5	1	0.1
Gymnastics	45	3.1	12	0.8	9	0.6	6	0.4
Hockey	29	2.0	10	0.7	8	0.6	1	0.1
Lacrosse	57	4.0	12	0.8	10	0.7	2	0.1
Rifle	46	3.2	13	0.9	3	0.2	2	0.1
Skiing	14	1.0	4	0.3	0	0.0	1	0.1
Soccer	114	7.9	26	1.8	15	1.1	8	0.6
Swimming	102	7.1	32	2.2	22	1.5	13	0.9
Tennis	114	7.9	24	1.7	8	0.6	3	0.2
Track	594	41.4	101	7.0	71	5.0	26	1.8
Wrestling	270	18.8	80	5.6	42	2.9	13	0.9

*Total individuals participating in one or more sports is 1172 (81.7%).

**Total individuals who were team captains in one or more sports is 499 (34.8%).

TABLE 20-2

VARSITY SPORT AND TYPE PARTICIPATION

Sport	No. of Letters*		Sport	No. of Letters*			
	N	%		N	%		
Baseball	1	70	4.9%	Rifle	1	15	1.1%
	2	67	4.7		2	7	0.5
	3	35	2.4		3	6	0.4
	4+	19	1.3		4+	3	0.2
Basketball	1	85	5.9	Skiing	1	0	0.0
	2	82	5.7		2	0	0.0
	3	34	2.4		3	4	0.3
	4+	7	0.4		4+	2	0.1
Cross Country	1	83	5.8	Soccer	1	51	3.6
	2	45	3.1		3	29	2.0
	3	34	2.4		3	14	1.0
	4+	11	0.8		4+	1	0.1
Football	1	136	9.5	Swimming	1	16	1.1
	2	242	16.9		2	21	1.5
	3	126	8.8		3	20	1.4
	4+	28	2.0		4+	13	0.9
Golf	1	9	0.6	Tennis	1	37	2.6
	2	20	1.4		2	25	1.7
	3	12	0.8		3	15	1.1
	4+	5	0.4		4+	6	0.4
Gymnastics	1	15	1.1	Track	1	133	9.3
	2	4	0.3		2	146	10.2
	3	7	0.5		3	107	7.5
	4+	4	0.3		4+	51	3.6
Hockey	1	2	0.1	Wrestling	1	82	5.7
	2	5	0.4		2	57	4.0
	3	6	0.4		3	40	2.8
	4+	6	0.4		4+	24	1.7
Lacrosse	1	16	1.1				
	2	17	1.2				
	3	5	0.4				
	4+	3	0.2				

*Total individuals earning one or more varsity letters is 1137 (79.2%).

TABLE 21-1
MISCELLANEOUS

	Number	Percent
Has a Valid State Drivers License--	1188	82.8%
And attended a Driver Training Course.....	169	11.8
But did not attend a Driver Training Course.....		
Does not have a Valid State Drivers License--	25	1.7
But attended a Driver Training Course.....	35	2.4
And did not attend a Driver Training Course.....		
Number of Books Read in the Last Year of High School (Not Counting Assigned Books)		
None.....	39	2.7
1-4.....	435	30.3
5-9.....	415	28.9
10-14.....	239	16.7
15-19.....	84	5.9
20 or more.....	220	15.3
Approximate Income from Paid Work During the Last 12 Months		
None.....	136	9.5
\$1-\$499.....	489	34.1
\$500-\$999.....	283	19.7
\$1000-\$1999.....	253	17.6
\$2000-\$2999.....	104	7.3
\$3000 or more.....	141	9.8
Taken College Level Courses After High School in One of the Following		
A Junior, Community, Extension or Branch College with a one or two year program only.....	74	5.2
Other Institution with less than a four year program.....	15	1.1
A Four Year College, not part of a University.....	38	2.7
A University, including its separate Colleges.....	64	4.5
Not Applicable.....	1240	86.4

TABLE 21-2

MISCELLANEOUS

<u>Parental Income</u>	<u>Number</u>	<u>Percent</u>
Less than \$4,000	24	1.7%
\$4,000-\$6,999	55	3.8
\$7,000-\$9,999	116	8.1
\$10,000-\$12,999	221	15.4
\$13,000-\$15,999	245	17.1
\$16,000-\$19,999	205	14.3
\$20,000-\$24,999	238	16.6
\$25,000 or more	229	16.0
No Response	102	7.1

<u>Parents' Education</u>	<u>Father's Education</u>		<u>Mother's Education</u>	
	<u>Number</u>	<u>Percent</u>	<u>Number</u>	<u>Percent</u>
Grammar School or Less	59	4.1%	32	2.2%
Some High School	118	8.2	121	8.4
High School Graduate	358	25.0	589	41.1
Some College	276	19.2	309	21.5
College Graduate	257	17.9	209	14.6
Some Graduate Work	62	4.3	52	3.6
Master's Degree or Equivalent	186	13.0	62	4.3
Bachelor of Divinity, Bachelor of Law	15	1.1	1	0.1
Ph.D., Ed.D., J.D.	36	2.5	6	0.4
M.D., D.D.S., or Other Professional	29	2.0	17	1.2
No Response	39	2.7	37	2.6

HIGH SCHOOL BACKGROUND

1. In what type of high school did you complete your senior year?
 - A. Did not complete senior year.
 - B. Public (includes high school in a foreign country).
 - C. Private (military).
 - D. Private (non-military).
2. How many high schools did you attend?
 - A. One.
 - B. Two.
 - C. Three.
 - D. Four.
 - E. Five or more.
3. Did you complete an honors course in any subject in high school?
 - A. Yes.
 - B. No.
4. How many books, not counting assigned books or textbooks, did you read in your last year of high school?
 - A. None.
 - B. 1 - 4.
 - C. 5 - 9.
 - D. 10 - 14.
 - E. 15 - 19.
 - F. 20 or more.
5. How many years of high school (or equivalent) debate experience do you have?
 - A. None, did not debate.
 - B. One year.
 - C. Two years.
 - D. Three years.
 - E. Four years.

COURSE WORK

Did you take any of the courses listed below in high school?

<u>CODE</u>	<u>RESPONSE</u>
A B	Yes No
6. Spanish	15. Algebra
7. French	16. Plane Geometry
8. German	17. Solid Geometry
9. Latin	18. Trigonometry
10. Russian	19. Calculus
11. Chinese	20. General Science
12. Portuguese	21. Biology
13. Other language not listed.	22. Chemistry
14. Did you study any language?	23. Physics

CCIN 1

PREVIOUS ENGLISH COURSES

24. Some high schools offer a broad survey course in masterpieces of world literature (as opposed to courses in simple American or British literature). Such courses normally begin with the ancient writers such as Homer and progress through the major European, British, and American works of later periods. Have you taken such a course in high school and, if so, what grade did you make?
- A. No, I did not take such a course in high school.
 - B. Yes, and I made an A.
 - C. Yes, and I made a B.
 - D. Yes, and I made less than a B.
25. Have you taken a course such as described in Question 24 above in college and if so, what grade did you make?
- A. No, I did not take such a course in college/did not attend college.
 - B. Yes, and I made an A.
 - C. Yes, and I made a B.
 - D. Yes, and I made less than a B.
26. How many semester hours of college credit in English and literature do you have?
- A. None.
 - B. 2 to 3.
 - C. 4 to 6.
 - D. 7 to 9.
 - E. More than 9.
27. English 201 is the standard third class literature course at USMA. It is a broad survey course in world literary masterpieces similar to that referred to in question 24 above. Are you interested in taking a validation examination, which, if successfully passed, excuses you from taking English 201?
- A. Yes.
 - B. No.

CLUBS AND ORGANIZATIONS

Answer questions 28 through 30 using the codes below:

<u>CODES</u>	<u>CODES</u>
A. None	F. 5
B. 1	G. 6
C. 2	H. 7
D. 3	I. 8
E. 4	J. 9 or more

28. Of how many high school clubs or organizations were you a member?
29. Of how many clubs or organizations NOT sponsored by your high school were you a member?
30. Of how many of those NON-SPONSORED clubs or organizations were you president, vice-president or equivalent?

CCIN I

SCOUTING EXPERIENCE

Are you now or have you been any of the following?

- | | <u>CODE</u> | <u>RESPONSE</u> |
|--|-------------|-----------------|
| | A | Yes |
| | B | No |
31. Boy Scout
32. Explorer Scout
33. Order of the Arrow
34. Camp Counselor
35. Sea Scout
36. Air Scout
37. What was your highest position in a Boy Scout Troop?
- A. Never a Boy Scout.
 - B. A Troop Member.
 - C. A Patrol Leader or Assistant.
 - D. A Senior Patrol Leader.
 - E. A Staff Member.
 - F. An Assistant Scoutmaster or Junior Assistant Scoutmaster.

COLLEGE EXPERIENCE

38. What type of college did you attend?
- A. Not applicable - I did not attend.
 - B. A junior, community, extension or branch college with a one or two year program only.
 - C. Some other institution with less than a four-year program.
 - D. A four-year college, not part of a university.
 - E. A university, including its separate colleges.

SCHOLARSHIPS

39. How many definite offers of ACADEMIC scholarships did you reject in order to attend the U.S. Military Academy?
- | | |
|---------|--------------|
| A. None | F. 5 |
| B. 1 | G. 6 |
| C. 2 | H. 7 |
| D. 3 | I. 8 or more |
| E. 4 | |
40. How many definite offers of full ATHLETIC scholarships for room, board, and tuition did you reject in order to attend the U.S. Military Academy?
- | | |
|---------|--------------|
| A. None | F. 5 |
| B. 1 | G. 6 |
| C. 2 | H. 7 |
| D. 3 | I. 8 or more |
| E. 4 | |

CCIN I

SCHOLARSHIPS (continued)

Did you receive any of the MILITARY scholarships listed below?

	<u>CODE</u>	<u>RESPONSE</u>
	A	Yes
	B	No
41.		Army ROTC Scholarship.
42.		Air Force ROTC Scholarship.
43.		Navy ROTC Scholarship.
44.		I did not receive any ROTC Scholarships.

NOMINATIONS AND APPOINTMENTS

45. How many years did you attempt to enter the U.S. Military Academy? (Include this year.)

- A. One
- B. Two
- C. Three
- D. Four

Did you attempt to obtain nominations this year from any of the Federal Academies listed below?

	<u>CODE</u>	<u>RESPONSE</u>
	A	Yes
	B	No
46.		U.S. Naval Academy
47.		U.S. Air Force Academy
48.		U.S. Coast Guard Academy
49.		U.S. Merchant Marine Academy
50.		USMA Only.

Did you receive appointments this year from any of the Federal Academies listed below?

	<u>CODE</u>	<u>RESPONSE</u>
	A	Yes
	B	No
51.		U.S. Naval Academy
52.		U.S. Air Force Academy
53.		U.S. Coast Guard Academy
54.		U.S. Merchant Marine Academy
55.		USMA only.

56. Which of the following schools was your first choice?

- A. USMA
- B. US Air Force Academy
- C. US Naval Academy
- D. US Coast Guard Academy
- E. US Merchant Marine Academy
- F. A civilian liberal arts college
- G. A civilian engineering or technical college (e.g., Caltech, MIT, etc.)
- H. Another type of college.

YOUR MILITARY EXPERIENCE

57. Have you ever served on active duty with the U.S. Armed Forces?

A. No

Yes, I served with the:

- B. Army
- C. Navy
- D. Air Force
- E. Marine Corps
- F. Coast Guard
- G. Merchant Marine
- H. National Guard

58. If you have served in the Army in which component did you serve?

- A. Did not serve in the Army.
- B. Regular component.
- C. Active Reserve component.
- D. Inactive Reserve component.

Do any of the following items apply to you?

<u>CODE</u>	<u>RESPONSE</u>
A	Yes
B	No

- 59. I attended basic training or boot camp on active duty.
- 60. I earned a Marksman's Badge.
- 61. I earned a Sharpshooter's Badge.
- 62. I earned an Expert Rifleman's Badge.
- 63. I earned a Parachutist's Wings.
- 64. I earned a Ranger Tab.
- 65. I earned and Expert Infantryman's Badge.
- 66. I earned a Combat Infantryman's Badge.
- 67. I earned some other badge (specify on the backside of the answer sheet).
- 68. I served overseas (not Vietnam).
- 69. I served in Vietnam.
- 70. I was awarded the Purple Heart.
- 71. I was awarded decoration(s) for valor or meritorious service.

FATHER'S MILITARY EXPERIENCE

72. Is your father still living?

- A. Yes
- B. No

73. What is or was your father's military service category?

- A. Did not serve.
- B. Officer, never enlisted.
- C. Enlisted only.
- D. Enlisted and officer.
- E. Don't know.

CCIN I

FATHER'S MILITARY EXPERIENCE (Continued)

74. If your father is serving (or served) as an enlisted man, what is his present grade (or was highest grade)?

<u>PAY GRADE</u>	<u>ARMY EQUIVALENT</u>	<u>NAVY EQUIVALENT</u>	<u>AIR FORCE EQUIVALENT</u>
A. E1 - E3	Private or PFC	Seaman	Airman
B. E4	Corporal	Petty Officer Third Class	Sergeant
C. E5	Sergeant	Petty Officer Second Class	Staff Sergeant
D. E6	Staff Sergeant	Petty Officer First Class	Technical Sergeant
E. E7	Platoon Sergeant	Chief Petty Officer	Master Sergeant
F. E8	Master Sergeant/ First Sergeant	Senior Chief Petty Officer	Senior Master Sergeant
G. E9	Sergeant Major/ Command Sergeant	Master Chief Petty Officer	Chief Master Sergeant

H. Does not apply/Do not know.

75. Is your father serving (or did he serve) as a Warrant Officer?

- A. Yes
- B. No
- C. Don't know

76. If your father is serving (or served) as an officer, what is his present grade (or was his highest grade)?

A. Does not apply/Do not know.	<u>NAVY EQUIVALENT</u>
B. Lieutenant	Ensign/Lieutenant Junior Grade
C. Captain	Lieutenant
D. Major	Lieutenant Commander
E. Lieutenant Colonel	Commander
F. Colonel	Captain
G. General Officer	Admiral

What was or is your father's previous or current military or related component? if more than one, select the response indicating the one in which he served the longest. Mark the one appropriate response from Questions 77-78.

- 77A. None, did not serve/Do not know.
- 77B. Regular Army.
- 77C. Air Force (formerly U.S. Army Air Corps).
- 77D. Navy.
- 77E. Marine Corps.
- 77F. Coast Guard.
- 77G. Merchant Marines.
- 78A. Army National Guard.
- 78B. Air National Guard.
- 78C. Army Reserve.
- 78D. Air Force Reserve.
- 78E. Naval Reserve.
- 78F. Marine Reserve.
- 78G. Coast Guard Reserve.

CCIN I

FATHER'S MILITARY EXPERIENCE (Continued)

What is or was your father's past military service and current status? Pick the one best response from Questions 79-80.

- 79A. No military service/Do not know.
- 79B. Served only during a war or one peacetime tour.
- 79C. Served 20 years or more and retired.
- 79D. Now on full-time active duty in a regular or reserve component.
- 79E. Served two or more tours on active duty, now on inactive reserve status.
- 79F. Served two or more tours on active duty, not now in reserve status.
- 79G. Now in Reserves or National Guard.
- 79H. Career in military service terminated for physical disability.
- 80A. Died while on active duty in a combat zone.
- 80B. Died while on active duty, not in a combat zone.

SOCIO-ECONOMIC DATA

81. Which one of the following statements best describes your driving experience?
Choose only one.
- A. I have a valid state or territory drivers license and attended a drivers training course.
 - B. I have a valid state or territory drivers license and did not attend a drivers training course.
 - C. I do not have a valid state or territory drivers license but attended a drivers training course.
 - D. I do not have a valid state or territory drivers license and did not attend a drivers training course.
82. During the last 12 months, how much income did you earn from work you performed?
- A. None
 - B. \$1-\$499.
 - C. \$500-\$999.
 - D. \$1000-\$1999.
 - E. \$2000-\$2999.
 - F. \$3000 or more.
83. What special prep school, if any did you attend?
- A. None.
 - B. USMA Preparatory School.
 - C. Manlius School.
 - D. Millard School.
 - E. Bullis School.
 - F. Marion School.
 - G. Other (please specify on backside of the answer sheet).
84. What is your best estimate of the total income last year of your parental family?
Consider annual income from all sources before taxes.
- A. Less than \$4,000.
 - B. \$4,000-\$6,999.
 - C. \$7,000-\$9,999.
 - D. \$10,000-\$12,999.
 - E. \$13,000-\$15,999.
 - F. \$16,000-\$19,999.
 - G. \$20,000-\$24,999.
 - H. \$25,000 or more.

Using the responses listed below indicate the highest level of formal education obtained by your parents in responses 85 and 86.

<u>CODE</u>	<u>RESPONSE</u>
A	Grammar school or less.
B	Some high school.
C	High school graduate.
D	Some college.
E	College degree.
F	Some graduate work.
G	Master's degree or equivalent.
H	Bachelor of Divinity, Bachelor of Law.
I	Ph.D., Ed.D., J.D.
J	MD, DDS, or other professional.

85. Father's highest level of formal education.
86. Mother's highest level of formal education.

When you have completed this section STOP. Check your Answer Sheet for accuracy and completeness. Make sure your name and cadet number are correct.

CCIN I

UNCLASSIFIED

SECURITY CLASSIFICATION OF THIS PAGE (When Data Entered)

REPORT DOCUMENTATION PAGE		READ INSTRUCTIONS BEFORE COMPLETING FORM
1. REPORT NUMBER 9B1.01-75-007	2. GOVT ACCESSION NO.	3. RECIPIENT'S CATALOG NUMBER
4. TITLE (and Subtitle) CHARACTERISTICS OF THE CLASS OF 1978	7. AUTHOR(s) Mr. John W. Houston	5. TYPE OF REPORT & PERIOD COVERED
		6. PERFORMING ORG. REPORT NUMBER
9. PERFORMING ORGANIZATION NAME AND ADDRESS Office of the Director of Institutional Research United States Military Academy West Point, New York 10996	10. PROGRAM ELEMENT, PROJECT, TASK AREA & WORK UNIT NUMBERS Project 183	8. CONTRACT OR GRANT NUMBER(s)
11. CONTROLLING OFFICE NAME AND ADDRESS Same as #9 above.	12. REPORT DATE October 1974	13. NUMBER OF PAGES 30 + ii
	14. MONITORING AGENCY NAME & ADDRESS (if different from Controlling Office) United States Military Academy West Point, New York 10996	15. SECURITY CLASS. (of this report) Unclassified
16. DISTRIBUTION STATEMENT (of this Report) Reproduction of this document in whole or in part must have prior approval of the Superintendent, United States Military Academy, West Point, New York.		
17. DISTRIBUTION STATEMENT (of the abstract entered in Block 20, if different from Report)		
18. SUPPLEMENTARY NOTES		
19. KEY WORDS (Continue on reverse side if necessary and identify by block number) Achievements Admissions Scores Analysis Characteristics Freshmen		
20. ABSTRACT (Continue on reverse side if necessary and identify by block number) This report presents the biographical characteristics and achievements of the 1435 cadets who entered the United States Military Academy in the Class of 1978.		

DD FORM 1473
1 JAN 73

EDITION OF 1 NOV 65 IS OBSOLETE

UNCLASSIFIED

SECURITY CLASSIFICATION OF THIS PAGE (When Data Entered)