

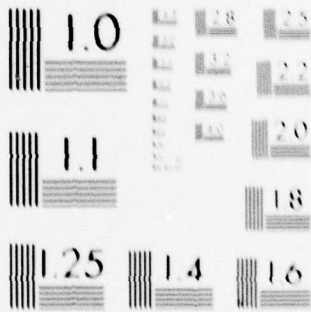
AD-A077 813 MILITARY ACADEMY WEST POINT NY OFFICE OF THE DIRECTO--ETC F/G 5/9  
CHARACTERISTICS OF THE CLASS OF 1980, (U)

UNCLASSIFIED 9B1.01-7T-006

NL

| OF |  
AD  
A077813





MICROCOPY RESOLUTION TEST CHART  
NATIONAL BUREAU OF STANDARDS-1963-A

AD A 077813

DDC FILE COPY



LEVEL II

(1)

7T-006

# UNITED STATES MILITARY ACADEMY

WEST POINT · NEW YORK

CHARACTERISTICS OF THE CLASS OF 1980

DISTRIBUTION STATEMENT A  
Approved for public release  
Distribution Unlimited

DDC  
RECEIVED  
DEC 10 1979  
REGISTRY

79 20 9 222A

OFFICE OF THE DIRECTOR OF INSTITUTIONAL RESEARCH  
SEPTEMBER 1976

DUTY-HONOR-COUNTRY

6  
CHARACTERISTICS OF THE CLASS OF 1980

14  
Report No. 9B1.01-7T-006  
Project No. 225  
Prepared by: ~~W.C.~~ John W. Houston  
Typist: Susan M. Griffiths  
11  
September 1976

12 29

ABSTRACT

This report presents the biographical characteristics and achievements of the 1485 cadets who entered the United States Military Academy in the Class of 1980.

NOTE: Any conclusions in this report are not to be construed as official U. S. Military Academy or Department of the Army positions unless so designated by other authorized documents.

~~DISTRIBUTION: This document is prepared for official purposes only. Its contents may not be reproduced or distributed (in whole or in part) without specific permission of the Superintendent, U. S. Military Academy, in each instance.~~

OFFICE OF THE  
DIRECTOR OF INSTITUTIONAL RESEARCH  
UNITED STATES MILITARY ACADEMY  
WEST POINT, NEW YORK 10996

DISTRIBUTION STATEMENT A

Approved for public release,  
Distribution Unlimited

406 247

5013

Accession For	
NTIS GRA&I	<input checked="" type="checkbox"/>
DDC TAB	<input type="checkbox"/>
Unannounced	<input type="checkbox"/>
Justification	<input type="checkbox"/>
By _____	
Distribution/	
Availability Codes	
Dist.	Avail and/or special
A	

TABLE OF CONTENTS

	Pages
PREFACE	1
TABLE	
1 Distribution of Scores on Academic Qualification Measures (CEER Components)	2
2 Distribution of Scores on Whole Candidate Score Components (admitted by CEER)	3
3 Distribution of Whole Candidate Scores (admitted by CEER)	4
4 Distribution of Scores on Academic Qualification Measures (ACEER Components)	5
5 Distribution of Scores on High School Rank and Whole Candidate Score Components (admitted by ACEER)	6
6 Distribution of Whole Candidate Scores (admitted by ACEER)	6
7 Means and Standard Deviations of Male and Female Cadets	7
8 Distribution of Height and Weight	8
9 High School Characteristics	9
10 Subject Exposure	9
11 Awards and Scholarships	10
12 Scholarships	10
13 Clubs and Positions Held of Awards Obtained	11,12
14 Nominations and Appointments	13
15 Father's Military Status and Rank	14
16 Class Year of Fathers who are USMA Graduates	15
17 Sport Participation	15
18 Varsity Sport and Type Participation	16,17
19 Miscellaneous	18,19
APPENDIX: Questionnaire (pertinent parts)	20-25
REPORT DOCUMENTATION PAGE (DD Form 1473)	26

## PREFACE

This report presents the biographical characteristics and achievements of the 1485 cadets who entered the Class of 1980. A separate report will compare selected characteristics of this class with previous classes. The admission scores listed in Tables 1, 2, and 3 are for the 1100 cadets whose admission was based on the CEER, while Tables 4, 5, and 6 are for the 385 cadets whose admission was based on American College Test scores. The following abbreviations, explanations and definitions of terms apply to this report.

CEER	A statistically derived weighted composite score of two College Entrance Examination Board tests (Scholastic Aptitude Test-Verbal, Scholastic Aptitude Test-Mathematics) and a standardized high school rank score. English Composition and Mathematics Achievement were not used in CEER for the Classes of 1978, 1979, or 1980.
High School Rank	This is a score derived by converting the actual high school rank to a standard score, using a formula developed by the Educational Testing Service.
Whole Candidate Score	This is a weighted composite score of the CEER or ACEER, the Physical Aptitude Examination score and the Leadership Potential Score.
Physical Aptitude Examination Score	This is a standardized score developed to measure physical capabilities.
Leadership Potential Score	This is a score derived from the ratings of the candidate by his/her secondary school teachers and evaluations by admissions officials of his/her type of participation in athletic and other school and community activities.
ACT	American College Testing Program.
ACEER	A statistically derived weighted composite score of ACT tests and High School Rank converted to the 200-800 range of the CEER.

TABLE 1

DISTRIBUTION OF SCORES ON ACADEMIC QUALIFICATION MEASURES (CEER COMPONENTS)  
(For those admitted by use of CEER)

Score Ranges	Scholastic Verbal		Aptitude Test Mathematics		English* Composition		Mathematics* Achievement		High School Rank Score	
	N	Cum %	N	Cum %	N	Cum %	N	Cum %	N	Cum %
750-800	4	100%	73	100%	2	100%	17	98%	69	100%
700-749	36	100	183	93	8	99	38	93	72	94
650-699	91	96	261	77	28	96	42	76	148	87
600-649	200	88	278	53	38	84	51	58	144	74
550-599	243	70	188	28	49	67	44	36	197	61
500-549	260	48	106	11	43	46	21	17	214	43
450-499	164	24	11	1	27	28	13	8	120	23
400-449	81	9	0	0	28	16	4	2	76	12
350-399	20	2	0	0	7	4	1	0	42	6
300-349	1	0	0	0	2	1	0	0	10	2
250-299	0	0	0	0	0	0	0	0	6	1
200-249	0	0	0	0	0	0	0	0	2	0
Total	1100		1100		232		231		1100	
Mean	550.48		638.46		549.74		626.02		564.87	
S.D.	77.56		68.97		90.49		85.79		109.56	

\*Not used in calculating CEER for Class of 1980.

TABLE 2

DISTRIBUTION OF SCORES ON WHOLE CANDIDATE SCORE COMPONENTS  
(For those admitted by use of CEER)

Score Ranges	Academic (CEER)		Physical Aptitude (PAE)		Leadership Potential (LPS)	
	N	Cum %	N	Cum %	N	Cum %
750-800	8	100%	12	100%	4	100%
700-749	68	99	36	99	69	100
650-699	171	93	102	96	244	93
600-649	305	78	150	86	292	71
550-599	316	50	240	72	265	45
500-549	167	21	231	50	134	21
450-499	56	6	183	29	71	8
400-449	9	1	57	12	16	2
350-399	0	0	16	7	5	0
300-349	0	0	15	6	0	0
250-299	0	0	26	4	0	0
200-249	0	0	22	2	0	0
Total	1100		1090		1100	
Mean	599.97		537.59		604.14	
S.D.	63.88		103.27		68.88	

TABLE 3  
 DISTRIBUTION OF WHOLE CANDIDATE SCORES  
 (For those admitted by use of CEER)

<u>Score Ranges</u>	<u>N</u>	<u>Cum %</u>
7250-7500	0	100%
7000-7249	3	100
6750-6999	24	100
6500-6749	50	98
6250-6499	127	93
6000-6249	265	81
5750-5999	320	57
5500-5749	199	23
5250-5499	84	10
5000-5249	20	3
4750-4999	7	1
4500-4759	1	0
4250-4999	0	0
<b>Total</b>	1100	
<b>Mean</b>	5948.46	
<b>S.D.</b>	366.21	

TABLE 4  
 DISTRIBUTION OF SCORES ON ACADEMIC QUALIFICATION MEASURES (ACEER COMPONENTS)  
 (For those admitted by use of ACEER)

Scale	English Test Scores		Mathematics Test Scores		Natural Science Test Scores		Social Science Test Scores**	
	USMA Freq	USMA Percent	USMA Freq	USMA Percent	USMA Freq	USMA Percent	USMA Freq	USMA Percent
36	0	100	7	100	0	100	0	100
35	0	100	10	98	8	100	0	100
34	0	100	9	96	19	98	7	100
33	1	100	21	93	26	93	13	98
32	1	100	19	88	42	86	6	95
31	2	99	21	83	54	75	22	93
30	8	99	42	77	54	94	31	87
29	9	97	54	66	44	47	26	79
28	10	95	78	52	38	36	45	73
27	13	92	43	32	24	26	27	61
26	16	89	40	21	25	20	52	54
25	34	84	17	11	12	13	41	40
24	40	76	10	6	14	10	35	29
23	47	65	5	4	6	6	31	20
22	65	53	4	2	6	5	10	12
21	47	36	2	1	3	3	13	9
20	38	24	2	1	8	3	4	6
19	21	14	0	0	0	1	5	4
18	13	9	1	1	0	1	2	4
17	11	5	0	0	1	1	3	3
16	5	2	0	0	1	0	4	2
15	2	1	0	0	0	0	3	1
14	2	1	0	0	0	0	1	1
13	0	0	0	0	0	0	0	0
12	0	0	0	0	0	0	0	0
11	0	0	0	0	0	0	1	0
10	0	0	0	0	0	0	0	0
1-9	0	0	0	0	0	0	0	0
Total	385		385		385		382	
Mean	22.60	18.4	28.67	19.3	29.15	20.9	26.26	19.0
S.D.	3.20	5.2	2.99	7.1	3.38	6.4	3.83	7.1

\*\*National Norms for men & women at 99 type 2 colleges. As an example, 24% of the 385 cadets in the Class of 80 who were admitted by the ACT English test had a score of 20 or lower, while 58% of the students in the college national norms had scores of 20 or lower (from "Research Services Summary Tables").

\*Not used in calculating ACEER.

TABLE 5  
DISTRIBUTION OF SCORES ON HIGH SCHOOL RANK AND WHOLE CANDIDATE SCORE COMPONENTS  
(For those admitted by use of ACEER)

Score Ranges	High School Rank (HSR)		Physical Aptitude (PAE)		Leadership Potential (LPS)		ACEER	
	N	Percentile	N	Percentile	N	Percentile	N	Percentile
750-800	29	100	5	100	0	100	3	100
700-749	29	92	7	99	24	100	16	99
650-699	66	85	23	97	96	94	43	95
600-649	74	68	66	91	115	69	100	84
550-599	63	49	85	73	80	39	163	58
500-549	81	32	90	51	52	18	48	16
450-499	23	11	49	27	9	5	10	3
400-449	10	5	23	14	7	2	2	1
350-399	9	3	5	8	2	1	0	0
300-349	1	0	6	6	0	0	0	0
250-299	0	0	12	5	0	0	0	0
200-249	0	0	6	2	0	0	0	0
Total	385		377		385		385	
Mean	592.81		534.08		611.79		595.58	
S.D.	98.54		100.15		66.64		54.64	

TABLE 6  
DISTRIBUTION OF WHOLE CANDIDATE SCORES  
(For those admitted by use of ACEER)

Score Ranges	Number	Percentile
7000-7249	1	100
6750-6999	2	100
6500-6749	16	99
6250-6499	39	95
6000-6249	99	85
5750-5999	127	59
5500-5749	61	26
5250-5499	34	10
5000-5249	5	2
4750-4999	1	1
4500-4799	0	0
4250-4499	0	0
Total	394	
Mean	5935.78	
S.D.	329.23	

TABLE 7

## MEANS AND STANDARD DEVIATIONS OF MALE AND FEMALE CADETS

	WCS		HSR		LPS		PAE	
	<u>Male</u>	<u>Female</u>	<u>Male</u>	<u>Female</u>	<u>Male</u>	<u>Female</u>	<u>Male</u>	<u>Female</u>
N	1366	119	1366	119	1366	119	1360	107
Mean	5959.10	5778.60	566.87	634.63	606.57	600.70	555.30	290.25
S.D.	358.60	279.30	106.68	86.85	68.26	68.67	77.90	61.35

	ACEER		CEER		SAT-V		SAT-M	
	<u>Male</u>	<u>Female</u>	<u>Male</u>	<u>Female</u>	<u>Male</u>	<u>Female</u>	<u>Male</u>	<u>Female</u>
N	347	38	1019	81	1019	81	1019	81
Mean	594.35	606.87	598.41	620.64	548.98	570.39	639.29	626.10
S.D.	55.63	43.61	64.61	49.12	77.29	78.85	66.48	60.83

	ACT-EN		ACT-MA		ACT-NS		ACT-SS	
	<u>Male</u>	<u>Female</u>	<u>Male</u>	<u>Female</u>	<u>Male</u>	<u>Female</u>	<u>Male</u>	<u>Female</u>
N	347	38	347	38	347	38	344	38
Mean	22.47	23.74	28.76	27.92	29.16	29.00	26.30	25.97
S.D.	3.15	3.46	3.03	2.55	3.37	3.46	3.81	4.06

TABLE 8-1  
 DISTRIBUTION OF HEIGHT AND WEIGHT  
 (Women Cadets)

<u>Inches</u>	<u>Height</u>		<u>Pounds</u>	<u>Weight</u>	
	<u>No.</u>	<u>%</u>		<u>No.</u>	<u>%</u>
72-73	0	0.0%	170-179	0	0.0%
70-71	7	5.9	160-169	2	1.7
68-69	13	11.0	150-159	9	7.6
66-67	37	31.1	140-149	17	14.3
64-65	37	31.1	130-139	38	31.9
62-63	22	18.5	120-129	28	23.5
60-61	2	1.7	110-119	20	16.8
58-59	1	0.8	100-109	4	3.4
			90-99	1	0.8
Total	119	100	Total	119	100
Mean	65.46		Mean	130.43	
S.D.	2.23		S.D.	13.35	

TABLE 8-2  
 DISTRIBUTION OF HEIGHT AND WEIGHT  
 (Men Cadets)

<u>Inches</u>	<u>Height</u>		<u>Pounds</u>	<u>Weight</u>	
	<u>No.</u>	<u>%</u>		<u>No.</u>	<u>%</u>
82-83	0	0.0%	250-259	0	0.0%
80-81	0	0.0	240-249	0	0.0
78-79	4	0.3	230-239	9	0.7
76-77	23	1.7	220-229	8	0.6
74-75	102	7.5	210-219	19	1.4
72-73	305	22.3	200-209	42	3.1
70-71	412	30.1	190-199	58	4.2
68-69	311	22.7	180-189	108	7.9
66-67	158	11.5	170-179	179	13.1
64-65	48	3.5	160-169	230	16.8
62-63	3	0.2	150-159	255	18.7
60-61	0	0.0	140-149	233	17.0
58-59	0	0.0	130-139	153	11.2
			120-129	58	4.2
			110-119	14	1.0
			100-109	0	0.0
Total	1366	100	Total	1366	100
Mean	70.20		Mean	159.88	
S.D.	2.61		S.D.	21.80	

TABLE 9  
HIGH SCHOOL CHARACTERISTICS

	Number	Percent
High School Graduate		
Yes.....	1481	99.7%
No.....	4	0.3
Type of High School in which Senior Year was Completed		
Did not complete senior year.....	4	0.3
Public (Include HS in foreign country).....	1283	86.4
Private (Non-Military).....	172	11.6
Private (Military).....	26	1.8
Rank in Graduating Class		
Did not graduate.....	4	0.3
Top Fifth.....	1116	75.2
Second Fifth.....	260	17.5
Third Fifth.....	90	6.0
Fourth Fifth.....	12	0.8
Bottom Fifth.....	3	0.2
Selected as Valedictorian (First in the Class).....	83	5.6
Selected as Salutatorian (Second in the Class).....	58	3.9
Number of High Schools Attended		
One.....	1156	77.8
Two.....	246	16.6
Three.....	60	4.0
Four or more.....	23	1.5

TABLE 10  
SUBJECT EXPOSURE

	Number	Percent
Studied the Following Mathematics and Science Course(s)		
Physics.....	1165	79.0
Chemistry.....	1364	92.5
Biology.....	1366	92.6
General Science.....	1120	76.0
Trigonometry.....	1335	90.5
Solid Geometry.....	1180	80.0
Calculus.....	621	42.1
Studied the Following Foreign Language(s)		
Spanish.....	547	37.1
French.....	436	29.6
German.....	302	20.5
Russian.....	29	2.0
Portuguese.....	6	0.4
Chinese.....	6	0.4
Other.....	187	12.7
Completed an Honor Course in Any Subject.....	857	58.1

TABLE 11  
AWARDS AND SCHOLARSHIPS

	Number	Percent
Received Following Awards		
National Honor Society.....	840	56.6%
Bausch and Lomb Science Award.....	38	2.6
American Legion Award.....	120	8.1
Other Community Awards.....	395	26.6
Boy's State or Girl's State Delegate.....	311	20.9
Other National Awards.....	123	8.3
Took the National Merit/Achievement Scholarship Examination		
No.....	849	57.2
Yes, but not qualified.....	377	25.4
Yes, and received commendation.....	186	12.5
Yes, was semi-finalist.....	18	1.2
Yes, was finalist.....	40	2.7
Yes, was merit scholar.....	15	1.0

TABLE 12  
SCHOLARSHIPS

	Number	Percent
Number of Academic Scholarships		
None.....	899	60.5%
One.....	294	19.8
Two.....	158	10.6
Three.....	76	5.1
Four.....	31	2.1
Five.....	11	0.7
Six.....	5	0.3
Seven.....	2	0.1
Eight or more.....	9	0.6
Number of Athletic Scholarships		
None.....	1335	89.9
One.....	80	5.4
Two.....	31	2.1
Three.....	13	0.9
Four.....	9	0.9
Five.....	2	0.1
Six.....	2	0.1
Seven.....	1	0.1
Eight or more.....	12	0.8
Received the Following Military Scholarships*		
Army ROTC Scholarship.....	201	13.5
Navy ROTC Scholarship.....	147	9.9
Air Force ROTC Scholarship.....	49	3.3
Other ROTC Scholarship.....	35	2.4

\*May be more than one.

TABLE 13-1  
CLUBS AND POSITIONS HELD OR AWARDS OBTAINED

	Number	Percent
<b>Elected or Appointed to Following High School Positions</b>		
President of High School Senior Class.....	86	5.8*
Senior Class Officer (Other than Pres).....	184	12.4
President, Student Body.....	73	4.9
President, High School Class (Other than Senior Class).....	138	9.3
President, Student Council.....	92	6.2
<b>Participated in or Held Following High School Positions*</b>		
Debating or Forensic Society.....	147	9.9
Thespian or Dramatic Club.....	173	11.6
Glee Club.....	136	9.2
High School Band.....	267	18.0
Staff, School Paper.....	225	15.2
Editor or Co-Editor, School Paper.....	94	6.3
Staff, Yearbook or Annual.....	210	14.1
Editor or Co-Editor, Yearbook or Annual.....	47	3.2
<b>Was a Member of the Following Number of Clubs which were Sponsored by the High School</b>		
None.....	90	6.1
One.....	147	9.9
Two.....	232	15.6
Three.....	279	18.8
Four.....	239	16.1
Five.....	175	11.8
Six.....	120	8.1
Seven.....	58	3.9
Eight or more.....	145	9.8
<b>Was President, Vice-President, or Equivalent of the Following Number of Clubs which were Sponsored by High School</b>		
None.....	770	51.9
One.....	407	27.4
Two.....	200	13.5
Three.....	72	4.8
Four.....	22	1.5
Five or more.....	14	0.9
<b>Was a Member of the Following Number of Clubs which were Not Sponsored by High School</b>		
None.....	464	31.2
One.....	481	32.4
Two.....	320	21.5
Three.....	124	8.4
Four.....	61	4.1
Five.....	15	1.0
Six.....	9	0.6
Seven.....	4	0.3
Eight or more.....	7	0.5

\*May be more than one.

TABLE 13-2

CLUBS AND POSITIONS HELD OR AWARDS OBTAINED

	Number	Percent
<b>Was President, Vice President or Equivalent of the Following</b>		
<b>Number of Non-School Clubs</b>		
None.....	1036	69.8*
One.....	344	23.2
Two.....	35	2.4
Three.....	12	0.8
Four.....	5	0.3
Five or more.....	3	0.2
<b>Number of Years of Debate Experience</b>		
One.....	150	10.1
Two.....	36	2.4
Three.....	11	0.7
Four.....	30	2.0
<b>The Highest Scout Progress Award Earned</b>		
Never a Scout.....	695	46.8
Scout.....	118	7.9
Tenderfoot.....	83	5.6
2nd Class.....	131	8.8
1st Class.....	129	8.7
Star.....	70	4.7
Life.....	74	5.0
Eagle.....	185	12.5
<b>Presently or Has Been One of the Following*</b>		
Boy Scout.....	714	52.3
Girl Scout.....	102	85.7
Explorer Scout.....	180	12.1
Sea Scout.....	23	1.5
Air Scout.....	20	1.3
Camp Counselor.....	190	12.8
Order of the Arrow.....	249	16.8

\*May be more than one.

TABLE 14

## NOMINATIONS AND APPOINTMENTS

	Number	Percent
<b>Federal Academies where Nomination was Attempted*</b>		
Naval Academy.....	453	30.5%
Air Force Academy.....	415	27.9
Coast Guard Academy.....	200	13.5
Merchant Marine Academy.....	74	5.0
<b>Federal Academies where Appointment was Received*</b>		
Naval Academy.....	65	4.4
Air Force Academy.....	63	4.2
Coast Guard Academy.....	41	2.8
Merchant Marine Academy.....	32	2.2
<b>Years Attempted to Enter USMA (including this year)</b>		
One.....	1277	86.0
Two.....	188	12.7
Three.....	10	0.7
Four or more.....	10	0.7
<b>First Choice of Schools Was:</b>		
U.S. Military Academy.....	1209	81.4
U.S. Air Force Academy.....	96	6.5
U.S. Naval Academy.....	54	3.6
U.S. Coast Guard Academy.....	9	0.6
U.S. Merchant Marine Academy.....	2	0.1
A Civilian Liberal Arts College.....	63	4.2
A Civilian Engineering Technical College.....	26	1.8
Another Type of College.....	14	0.9
No Response.....	12	0.8

\*May be more than one.

TABLE 15

## FATHER'S MILITARY STATUS AND RANK

Father's Past Military Service and Current Status	Number	Percent
No Military Service or Don't Know.....	422	28.4%
Career in Military Service Terminated for Physical Disability....	33	2.2
Not in Reserve Status, Served Two or More Tours on Active Duty...	101	6.8
Served 20 Years or More and Retired.....	198	13.3
Served Only During a War or for One Peacetime Tour.....	532	35.8
Now on Full Time Active Duty, in a Regular or Reserve Component..	137	9.2
Inactive Reserve Status, Served Two or More Tours on Active Duty.....	27	1.8
Now in Reserves or National Guard.....	31	2.0
Died While on Active Duty.....	4	0.2
Father's Highest Grade**		
E1 - E3 (Private or PFC).....	191	12.9
E4 - E6 (Corporal through Staff Sergeant).....	345	23.2
E7 - E9 (Platoon Sergeant through Sergeant Major).....	160	10.8
Warrant Officer,.....	38	2.6
Lieutenant or Captain.....	121	8.1
Major.....	43	2.9
Lieutenant Colonel.....	103	6.9
Colonel.....	80	5.4
General Officer.....	10	0.7

\*\*Army Grade or AF, Navy & Marine Corps equivalent.

TABLE 16

CLASS YEAR OF FATHERS WHO ARE USMA GRADUATES

<u>Year</u>	<u>No.</u>	<u>Year</u>	<u>No.</u>
1958	1	1949	6
1957	5	1948	3
1956	6	1947	0
1955	8	1946	4
1954	9	1945	0
1953	2	1944	2
1952	5	1943	1
1951	1	1940	1
1950	4	1938	1

Total 59

TABLE 17

SPORT PARTICIPATION

	Number	Percent
<b>Participated in Varsity Athletics</b>		
Yes.....	1199	80.7%
No.....	286	19.3
<b>Earned Varsity Letter</b>		
Yes.....	1199	80.7
No.....	286	19.3
<b>Varsity Team Captain</b>		
Yes.....	562	37.8
No.....	923	62.2

TABLE 18-1

VARSIY SPORT AND TYPE PARTICIPATION  
(Women Cadets)

N = 119

Sport	Participants		Captains		All-Conf		All-State	
	N	%	N	%	N	%	N	%
Baseball or Softball	10	8.4%	4	3.4%	0	0.0%	0	0.0%
Basketball	47	39.5	17	14.3	6	5.0	1	0.8
Cross Country	10	8.4	2	1.7	0	0.0	1	0.8
Fencing	2	1.7	0	0.0	1	0.8	1	0.8
Football	3	2.5	0	0.0	1	0.8	0	0.0
Golf	3	2.5	1	0.8	0	0.0	0	0.0
Gymnastics	8	6.7	2	1.7	0	0.0	0	0.0
Hockey	1	0.8	0	0.0	0	0.0	0	0.0
Lacrosse	1	0.8	1	0.8	0	0.0	0	0.0
Rifle	2	1.7	0	0.0	0	0.0	0	0.0
Skiing	2	1.7	0	0.0	0	0.0	0	0.0
Soccer	6	5.0	3	2.5	0	0.0	0	0.0
Swimming	18	15.1	7	5.9	2	1.7	3	2.5
Tennis	13	10.9	0	0.0	0	0.0	0	0.0
Track	53	44.5	13	10.9	7	5.9	4	3.4
Water Polo	2	1.7	0	0.0	0	0.0	0	0.0
Wrestling	0	0.0	0	0.0	0	0.0	0	0.0
Volleyball	35	29.4	14	11.8	3	2.5	1	0.8

TABLE 18-2

VARSIY SPORT AND TYPE PARTICIPATION  
(Men Cadets)

N = 1366

Sport	Participants		Captains		All-Conf		All-State	
	N	%	N	%	N	%	N	%
Baseball	293	21.4%	63	4.6	40	2.9	6	0.4%
Basketball	330	24.2	82	6.0	35	2.6	7	0.5
Cross Country	200	14.6	54	4.0	24	1.8	10	0.7
Fencing	3	0.2	0	0.0	0	0.0	0	0.0
Football	659	48.2	197	14.4	194	14.2	48	3.5
Golf	95	7.0	20	1.5	11	0.8	5	0.4
Gymnastics	37	2.7	11	0.8	5	0.4	4	0.3
Hockey	34	2.5	9	0.7	9	0.7	3	0.2
Lacrosse	42	3.1	12	0.9	7	0.5	1	0.1
Rifle	45	3.3	18	1.3	1	0.1	2	0.1
Skiing	18	1.3	2	0.1	0	0.0	0	0.0
Soccer	135	9.9	28	2.0	16	1.2	8	0.6
Swimming	100	7.3	27	2.0	28	2.0	13	1.0
Tennis	125	9.2	21	1.5	9	0.7	1	0.1
Track	557	40.8	100	7.3	82	6.0	39	2.9
Water Polo	17	1.2	5	0.4	2	0.1	0	0.0
Wrestling	268	19.6	70	5.1	39	2.9	8	0.6
Volleyball	14	1.0	3	0.2	1	0.1	0	0.0

TABLE 19-1  
MISCELLANEOUS

	Number	Percent
<b>Approximate Income from Paid Work During the Last 12 Months</b>		
None.....	150	10.1%
\$1-\$499.....	491	33.1
\$500-\$999.....	299	20.1
\$1000-\$1999.....	212	14.3
\$2000-\$2999.....	97	6.5
\$3000 or more.....	176	11.9
<b>Taken College Level Courses After High School in One of the Following</b>		
A Junior, Community, Extension or Branch College with a one or two year program only.....	66	4.4
Other Institution with less than a four year program.....	19	1.3
A Four Year College, not part of a University.....	45	3.0
A University, including its separate Colleges.....	95	6.4
Not Applicable.....	1260	84.8
Attended U.S. Military Academy Preparatory School.....	179	12.1
<b>With Which Hand Do You Normally Write?</b>		
Right hand.....	1302	88.5
Left hand.....	170	11.5

TABLE 19-2  
MISCELLANEOUS

<u>Parental Income</u>	<u>Number</u>	<u>Percent</u>
Less than \$4,000	19	1.3%
\$4,000-\$6,999	52	3.5
\$7,000-\$9,999	77	5.2
\$10,000-\$12,999	141	9.5
\$13,000-\$14,999	208	14.0
\$16,000-\$19,999	229	15.4
\$20,000-\$24,999	288	19.4
\$25,000-\$29,999	189	12.7
\$30,000 or more	243	16.4
No Response	39	2.6

<u>Parents' Education</u>	<u>Father's Education</u>		<u>Mother's Education</u>	
	<u>Number</u>	<u>Percent</u>	<u>Number</u>	<u>Percent</u>
Some High School or Less	152	10.2%	119	8.0%
High School Graduate	344	23.2	605	40.7
Some College	257	17.3	302	20.3
College Graduate	317	21.3	273	18.4
Some Graduate Work	79	5.3	58	3.9
Master's Degree or Equivalent	234	15.8	88	5.9
Bachelor of Divinity, Bachelor of Law	16	1.1	3	0.2
Ph.D., Ed.D., J.D.	38	2.6	3	0.2
M.D., D.D.S., or Other Professional	30	2.0	15	1.0
No Response	18	1.2	19	1.3

CLASS CHARACTERISTICS INVENTORY  
CLASS OF 1980

To the New Cadet:

This questionnaire is being administered under the authority of 10 USC 4334. The principle purpose is to collect administrative, demographic and attitudinal data relating to the entering cadet Class of 1980. The routine uses to be made of the data are to analyze the characteristics of the class, develop trend data, and to analyze class attitudes pertinent to USMA programs. The information obtained will be used only in statistical reports and will not become a part of your official record. Identifying information is requested to correlate with information that has been and will be collected at various times during your cadet careers. Your providing the information is voluntary. However, any nonresponse will result in incomplete data and may bias the results by precluding their complete interpretation.

Directions

1. With this booklet you should have received an answer sheet, titled GENERAL PURPOSE DATA SHEET (USMA Form 22-1).
2. Enter your last name and initials at the top of this answer sheet in the boxes indicated, and mark sense the matching letter boxes. Enter your cadet number at the top right of the answer sheet in columns 1-7, and mark sense the matching number boxes. In columns 8-10 enter "0"'s in the boxes, and mark sense the matching number boxes.

EXAMPLE: New Cadet Robert J. Johnson, Cadet Number 8001234

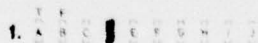
LAST NAME (First Eight Letters)		F M		I J		K L		N O		P Q		R S		T U		V W		X Y		Z					
A	B	C	D	E	F	G	H	I	J	K	L	M	N	O	P	Q	R	S	T	U	V	W	X	Y	Z
J	O	H	N	S	O	N	R																		



1		2		3		4		5		6		7		8		9		10	
8	0	0	1	2	3	4	0	0	0	0	0	0	0	0	0	0	0	0	0

USE ORDINARY PENCIL—NOT BALLPOINT PEN. MARK CLEARLY. ERASE COMPLETELY WHEN MAKING CHANGES OR CORRECTIONS.

3. Read each question and all its responses carefully before selecting your answer.
4. Mark your answers on the Answer Sheet. USE AN ORDINARY PENCIL - not a ballpoint pen.
5. Be sure that your answer marks are heavy and that you blacken the whole rectangle. Do not go outside the lines of the box. Look at the example below.



6. If you decide to change an answer, erase the mark completely before entering a new one.
7. Check your answers once in a while to be sure that the number on the Answer Sheet is the same as the number of the question that you are answering. Note that the QUESTION NUMBERS GO ACROSS THE ANSWER SHEET IN ROWS, not down the Answer Sheet in columns.
8. Do not tear or fold the Answer Sheet.

To what New Cadet Company are you assigned?

- A. First
- B. Second
- C. Third
- D. Fourth
- E. Fifth
- F. Sixth
- G. Seventh
- H. Eighth

---

HIGH SCHOOL BACKGROUND

- 2. In what type of high school did you complete your senior year?
  - A. Did not complete senior year.
  - B. Public (includes high school in a foreign country).
  - C. Private (military).
  - D. Private (non-military).
- 3. How many high schools did you attend?
  - A. One.
  - B. Two.
  - C. Three.
  - D. Four.
  - E. Five or more.
- 4. Did you complete an honors course in any subject in high school?
  - A. Yes.
  - B. No.
- 5. How many years of high school (or equivalent) debate experience do you have?
  - A. None, did not debate.
  - B. One year.
  - C. Two years.
  - D. Three years.
  - E. Four years.

---

COURSE WORK

Did you take any of the courses listed below in high school?

<u>CODE</u>	<u>RESPONSE</u>
A	Yes
B	No

6. Spanish	13. Solid Geometry
7. French	14. Trigonometry
8. German	15. Calculus
9. Russian	16. General Science
10. Chinese	17. Biology
11. Portuguese	18. Chemistry
12. Other language not listed	19. Physics

---

CLUBS AND ORGANIZATIONS

Answer questions 20 through 23 using the codes below:

CODES

- A. None
- B. 1
- C. 2
- D. 3
- E. 4

CODES

- F. 5
- G. 6
- H. 7
- I. 8 or more

- 20. Of how many high school clubs or organizations were you a member?
  - 21. Of how many clubs or organizations NOT sponsored by your high school were you a member?
  - 22. Of how many of those NON-SPONSORED clubs or organizations were you president, vice-president or equivalent?
  - 23. Of how many of those NON-SPONSORED clubs or organizations were you an officer other than president, vice-president or equivalent?
- 

SCOUTING EXPERIENCE

Are you now or have you been any of the following?

CODE

RESPONSE

- |   |     |
|---|-----|
| A | Yes |
| B | No  |

- 24. Boy Scout.
  - 25. Girl Scout.
  - 26. Explorer Scout.
  - 27. Order of the Arrow.
  - 28. Camp Counselor.
  - 29. Sea Scout.
  - 30. Air Scout.
- 

COLLEGE EXPERIENCE

- 31. What type of college did you attend?
    - A. Not applicable--I did not attend.
    - B. A junior, community, extension or branch college with a one or two year program only.
    - C. Some other institution with less than a four-year program.
    - D. A four-year college, not part of a university.
    - E. A university, including its separate colleges.
-

SCHOLARSHIPS

32. How many definite offers of ACADEMIC scholarships did you reject in order to attend the U.S. Military Academy?

- |         |              |
|---------|--------------|
| A. None | F. 5         |
| B. 1    | G. 6         |
| C. 2    | H. 7         |
| D. 3    | I. 8 or more |
| E. 4    |              |

33. How many definite offers of full ATHLETIC scholarships for room, board, and tuition did you reject in order to attend the U.S. Military Academy?

- |         |              |
|---------|--------------|
| A. None | F. 5         |
| B. 1    | G. 6         |
| C. 2    | H. 7         |
| D. 3    | I. 8 or more |
| E. 4    |              |

Did you receive any of the MILITARY scholarships listed below?

<u>CODE</u>	<u>RESPONSE</u>
A	Yes
B	No

- 34. Army ROTC Scholarship.
- 35. Air Force ROTC Scholarship.
- 36. Navy ROTC Scholarship.
- 37. Any other ROTC Scholarship.

NOMINATIONS AND APPOINTMENTS

38. How many years did you attempt to enter the U.S. Military Academy? (Include this year.)

- A. One
- B. Two
- C. Three
- D. Four

Did you attempt to obtain nominations this year from any of the Federal Academies listed below?

<u>CODE</u>	<u>RESPONSE</u>
A	Yes
B	No

- 39. U.S. Naval Academy.
- 40. U.S. Air Force Academy.
- 41. U.S. Coast Guard Academy.
- 42. U.S. Merchant Marine Academy.

Did you receive appointments this year from any of the Federal Academies listed below?

<u>CODE</u>	<u>RESPONSE</u>
A	Yes
B	No

- U.S. Naval Academy.

44. U.S. Air Force Academy.  
 45. U.S. Coast Guard Academy  
 46. U.S. Merchant Marine Academy.
47. Which of the following schools was your first choice?
- A. USMA.  
 B. U.S. Air Force Academy.  
 C. U.S. Naval Academy.  
 D. U.S. Coast Guard Academy.  
 E. U.S. Merchant Marine Academy.  
 F. A civilian liberal arts college.  
 G. A civilian engineering college (e.g., Caltech, MIT, etc.).  
 H. Another type of college.

---

FATHER'S MILITARY EXPERIENCE

48. If your father is serving (or served) as an enlisted man, what is his present grade (or was highest grade)?

<u>PAY GRADE</u>	<u>ARMY EQUIVALENT</u>	<u>NAVY EQUIVALENT</u>	<u>AIR FORCE EQUIVALENT</u>
A. E1 - E3	Private or PFC	Seaman	Airman
B. E4	Corporal	Petty Officer Third Class	Sergeant
C. E5	Sergeant	Petty Officer Second Class	Staff Sergeant
D. E6	Staff Sergeant	Petty Officer First Class	Technical Sergeant
E. E7	Platoon Sergeant	Chief Petty Officer	Master Sergeant
F. E8	Master Sergeant/ First Sergeant	Senior Chief Petty Officer	Senior Master Sergeant
G. E9	Sergeant Major/ Command Sergeant Major	Master Chief Petty Officer	Chief Master Sergeant

H. Does not apply/do not know.

49. Is your father serving (or did he serve) as a warrant officer?

- A. Yes  
 B. No  
 C. Don't know

50. If your father is serving (or served) as an officer, what is his present grade (or was his highest grade)?

	<u>NAVY EQUIVALENT</u>
A. Does not apply/do not know.	
B. Lieutenant	Ensign/Lieutenant Junior Grade
C. Captain	Lieutenant
D. Major	Lieutenant Commander
E. Lieutenant Colonel	Commander
F. Colonel	Captain
G. General Officer	Admiral

---

SOCIOECONOMIC DATA

51. During the last 12 months, how much income did you earn from work you performed?

- A. None
- B. \$1-\$499
- C. \$500-\$999
- D. \$1,000-\$1,999
- E. \$2,000-\$2,999
- F. \$3,000 or more

52. What is your best estimate of the total income last year of your parental family? Consider annual income from all sources before taxes.

- A. Less than \$4,000
- B. \$4,000-\$6,999
- C. \$7,000-\$9,999
- D. \$10,000-\$12,999
- E. \$13,000-\$15,999
- F. \$16,000-\$19,999
- G. \$20,000-\$24,999
- H. \$25,000-\$29,999
- I. \$30,000 or more

Using the responses listed below, indicate the highest level of formal education obtained by your parents in questions 53 and 54.

<u>CODE</u>	<u>RESPONSE</u>
A	Some high school or less
B	High school graduate
C	Some college
D	College degree
E	Some graduate work
F	Master's degree or equivalent
G	Bachelor of Divinity, Bachelor of Law
H	Ph.D., Ed.D., or J.D.
I	MD, DDS, or other professional

53. Father's highest level of formal education.

54. Mother's highest level of formal education.

55. With which hand do you normally write?

- A. Right hand
- B. Left hand

56. What was/is your mother's military rank?

- A. She had no military service.
- B. She was an officer and never an enlisted person.
- C. She was an enlisted person only.
- D. She served in both officer and enlisted ranks.

UNCLASSIFIED

SECURITY CLASSIFICATION OF THIS PAGE (When Data Entered)

REPORT DOCUMENTATION PAGE		READ INSTRUCTIONS BEFORE COMPLETING FORM
1. REPORT NUMBER 9Bl.01-7T-006	2. GOVT ACCESSION NO.	3. RECIPIENT'S CATALOG NUMBER
4. TITLE (and Subtitle)  CHARACTERISTICS OF THE CLASS OF 1980	5. TYPE OF REPORT & PERIOD COVERED	
	6. PERFORMING ORG. REPORT NUMBER	
7. AUTHOR(s)  Mr. John W. Houston	8. CONTRACT OR GRANT NUMBER(s)	
9. PERFORMING ORGANIZATION NAME AND ADDRESS Office of the Director of Institutional Research United States Military Academy West Point, New York 10996	10. PROGRAM ELEMENT, PROJECT, TASK AREA & WORK UNIT NUMBERS  Project No. 225	
11. CONTROLLING OFFICE NAME AND ADDRESS  Same as #9 above.	12. REPORT DATE September 1976	
	13. NUMBER OF PAGES 26 + ii	
14. MONITORING AGENCY NAME & ADDRESS (if different from Controlling Office)  United States Military Academy West Point, New York 10996	15. SECURITY CLASS. (of this report)  Unclassified	
	15a. DECLASSIFICATION/DOWNGRADING SCHEDULE	
16. DISTRIBUTION STATEMENT (of this Report)  Reproduction of this document in whole or in part must have prior approval of the Superintendent, United States Military Academy, West Point, New York.		
17. DISTRIBUTION STATEMENT (of the abstract entered in Block 20, if different from Report)		
18. SUPPLEMENTARY NOTES		
19. KEY WORDS (Continue on reverse side if necessary and identify by block number) Achievements Admissions Scores Analysis Characteristics Freshmen		
20. ABSTRACT (Continue on reverse side if necessary and identify by block number)  This report presents the biographical characteristics and achievements of the 1485 cadets who entered the United States Military Academy in the Class of 1980.		

DD FORM 1473 1 JAN 73 EDITION OF 1 NOV 65 IS OBSOLETE

UNCLASSIFIED

SECURITY CLASSIFICATION OF THIS PAGE (When Data Entered)