

AD-A077 819 MILITARY ACADEMY WEST POINT NY OFFICE OF THE DIRECTO--ETC F/G 5/9  
CHARACTERISTICS OF THE CLASS OF 1981, (U)

UNCLASSIFIED 981.01-77-019

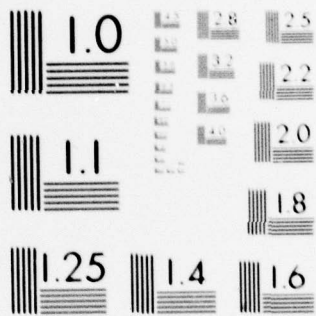
NL

| OF |

AD  
A077819



END  
DATE  
FILMED  
1-80  
DDC



MICROCOPY RESOLUTION TEST CHART  
NATIONAL BUREAU OF STANDARDS 1963-A

LEVEL II

77-019



# UNITED STATES MILITARY ACADEMY

WEST POINT · NEW YORK

*See 1473 in back*

CHARACTERISTICS  
OF THE  
CLASS OF 1981

DDC  
RECEIVED  
DEC 10 1979  
RECEIVED  
A

79 20 9 228

OFFICE OF THE  
DIRECTOR OF INSTITUTIONAL RESEARCH

SEPTEMBER 1977

**DUTY-HONOR-COUNTRY**

DISTRIBUTION STATEMENT A

Approved for public release;  
Distribution Unlimited

ADA 07819

DDC FILE COPY



CHARACTERISTICS OF THE CLASS OF 1981

Report No. 9Bl.01-77-019  
Project No. 245  
Prepared by: Mr. John W. Houston  
Programmer: Mr. Michael Orban  
Typist: Susan Griffiths  
September 1977

ABSTRACT

This report presents the biographical characteristics and achievements of the 1,469 new cadets who entered the United States Military Academy in the Class of 1981.

NOTE: Any conclusions in this report are not to be construed as official U. S. Military Academy or Department of the Army positions unless so designated by other authorized documents.

~~DISTRIBUTION:~~ This document is prepared for official purposes only. Its contents may not be reproduced or distributed (in whole or in part) without specific permission of the Superintendent, U. S. Military Academy, at each instance.

OFFICE OF THE  
DIRECTOR OF INSTITUTIONAL RESEARCH  
UNITED STATES MILITARY ACADEMY  
WEST POINT, NEW YORK 10996

DISTRIBUTION STATEMENT A  
Approved for public release;  
Distribution Unlimited

Accession For	
NTIS GRA&I	<input checked="" type="checkbox"/>
DDC TAB	<input type="checkbox"/>
Unannounced	<input type="checkbox"/>
Justification	
By _____	
Distribution/	
Availability Codes	
Dist.	Avail and/or special
A	

TABLE OF CONTENTS

	Pages
PREFACE	1
TABLE	
1 Distribution of Scores on Academic Qualification Measures (Admitted by CEER)	2
2 Distribution of Scores on Academic Qualification Measures (Admitted by ACEER)	3
3 Distribution of High School Rank Scores and ACEER (Admitted by ACEER)	4
4 Distribution of Scores on Whole Candidate Score Components (All admitted cadets)	5
5 Distribution of Whole Candidate Scores (All admitted cadets)	6
6 Means and Standard Deviations of Scores of Male and Female Cadets	7
7 Distribution of Height and Weight	8
8 High School Characteristics	9
9 Subject Exposure	9
10 Awards and Scholarships	10
11 Scholarships	10
12 Clubs and Positions Held or Awards Obtained	11,12
13 Nominations and Appointments	12
14 Father's Military Status and Rank	13
15 Class Year of Fathers who are USMA Graduates	14
16 Sport Participation	14
17 Varsity Sport and Type Participation	15,16
18 Miscellaneous	17
APPENDIX: Questionnaire (pertinent parts)	18-29
REPORT DOCUMENTATION PAGE (DD Form 1473)	30

## PREFACE

This report presents the biographical characteristics and achievements of the 1,469 new cadets who entered the Class of 1981. A separate report will compare selected characteristics of this class with previous classes. The admission scores listed in Table 1 are for the 1,102 cadets whose admission was based on the CEER, while Tables 2 and 3 are for the 367 cadets whose admission was based on American College Test scores. The following abbreviations, explanations and definitions of terms apply to this report.

CEER	A statistically derived weighted composite score of two College Entrance Examination Board tests (Scholastic Aptitude Test-Verbal, Scholastic Aptitude Test-Mathematics) and a standardized high school rank score.
High School Rank	This is a score derived by converting the actual high school rank to a standard score, using a formula developed by the Educational Testing Service.
Whole Candidate Score	This is a weighted composite score of the CEER or ACEER, the Physical Aptitude Examination score and the Leadership Potential Score.
Physical Aptitude Examination Score	This is a standardized score developed to measure physical capabilities.
Leadership Potential Score	This is a score derived from the ratings of the candidate by his/her secondary school teachers and evaluations by admissions officials of his/her type of participation in athletic and other school and community activities.
ACT	American College Testing Program.
ACEER	A statistically derived weighted composite score of ACT tests and High School Rank converted to the 200-800 range of the CEER.

TABLE 1

DISTRIBUTION OF SCORES ON ACADEMIC QUALIFICATION MEASURES  
(For those admitted by use of CEER)

Score Ranges	Scholastic Aptitude Verbal		Scholastic Aptitude Mathematics		High School Rank Score		CEER	
	N	Cum %	N	Cum %	N	Cum %	N	Cum %
750-800	5	100%	45	100%	56	100%	5	100%
700-749	29	100	149	96	47	95	43	100
650-699	88	97	236	82	141	91	137	96
600-649	185	89	348	61	157	78	305	83
550-599	253	72	209	29	197	64	357	56
500-549	255	49	96	10	239	46	187	23
450-499	187	26	18	2	116	24	58	6
400-449	80	9	1	0	77	14	10	1
350-399	19	2	0	0	47	7	0	0
300-349	1	0	0	0	16	2	0	0
250-299	0	0	0	0	8	1	0	0
200-249	0	0	0	0	1	0	0	0
Total	1102		1102		1102		1102	
Mean	547.72		628.88		556.07		592.16	
S.D.	77.33		65.51		106.93		60.12	

TABLE 2

DISTRIBUTION OF SCORES ON ACADEMIC QUALIFICATION MEASURES  
(For those admitted by use of ACEER)

Score Ranges	ACT-ENG		ACT-MATH		ACT-N.S.		ACT-S.S.	
	N	Cum %	N	Cum %	N	Cum %	N	Cum %
34-36	0	100%	31	100%	11	100%	0	100%
31-33	5	100	54	92	131	97	25	100
28-30	22	99	120	77	121	61	93	93
25-27	58	93	143	44	69	28	120	67
22-24	136	77	18	5	21	10	65	34
19-21	108	40	1	0	10	4	32	16
16-18	31	10	0	0	3	1	13	7
13-15	6	2	0	0	1	0	9	4
10-12	0	0	0	0	0	0	4	1
Total	367		367		367		367	
Mean	22.39		28.42		28.98		25.37	
S.D.	3.31		2.91		3.44		4.25	

TABLE 3

DISTRIBUTION OF SCORES ON HIGH SCHOOL RANK SCORES AND ACEER  
(For those admitted by use of ACEER)

Score Ranges	High School Rank Score		ACEER	
	N	Cum %	N	Cum %
750-800	29	100%	0	100%
700-749	17	92	10	100
650-699	55	88	39	97
600-649	58	73	92	87
550-599	84	57	146	62
500-549	68	34	68	22
450-499	33	15	11	3
400-449	11	6	1	0
350-399	9	3	0	0
300-349	3	1	0	0
250-299	0	0	0	0
200-249	0	0	0	0
Total	367		367	
Mean	583.23		589.70	
S.D.	100.66		52.25	

TABLE 4

DISTRIBUTION OF SCORES ON WHOLE CANDIDATE SCORE COMPONENTS  
(For all admitted cadets)

Score Ranges	Physical Aptitude (PAE)		Leadership Potential (LPS)	
	N	Cum %	N	Cum %
750-800	15	100%	6	100%
700-749	47	99	78	100
650-699	127	96	335	94
600-649	250	87	442	72
550-599	325	70	314	42
500-549	361	48	197	20
450-499	262	23	68	6
400-449	70	5	21	2
350-399	5	1	6	1
300-349	2	0	2	0
250-299	0	0	0	0
200-249	1	0	0	0
<b>Total</b>	<b>1465</b>		<b>1469</b>	
<b>Mean</b>	<b>559.55</b>		<b>606.21</b>	
<b>S.D.</b>	<b>76.17</b>		<b>67.85</b>	

TABLE 5  
 DISTRIBUTION OF WHOLE CANDIDATE SCORES  
 (For all admitted cadets)

<u>Score Ranges</u>	<u>N</u>	<u>Cum %</u>
7250-7500	1	100%
7000-7249	7	100
6750-6999	17	99
6500-6749	78	98
6250-6499	132	93
6000-6249	342	85
5750-5999	484	61
5500-5749	230	27
5250-5499	134	12
5000-5249	36	3
4750-4999	7	1
4500-4759	1	0
4250-4999	0	0
Total	1469	
Mean	5927.18	
S.D.	363.45	

TABLE 6  
 MEANS AND STANDARD DEVIATIONS OF SCORES  
 OF MALE AND FEMALE CADETS

	WCS		HSR		LPS		PAE*	
	<u>Male</u>	<u>Female</u>	<u>Male</u>	<u>Female</u>	<u>Male</u>	<u>Female</u>	<u>Male</u>	<u>Female</u>
N	1365	104	1365	104	1365	104	1361	104
Mean	5925.61	5950.40	558.82	615.96	607.14	594.04	562.77	517.38
S.D.	362.59	377.56	105.33	101.03	67.61	70.07	75.15	77.16

	ACEER		CEER		SAT-V		SAT-M	
	<u>Male</u>	<u>Female</u>	<u>Male</u>	<u>Female</u>	<u>Male</u>	<u>Female</u>	<u>Male</u>	<u>Female</u>
N	348	19	1017	85	1017	85	1017	85
Mean	588.87	604.95	590.77	608.75	546.51	562.24	629.62	620.00
S.D.	52.17	52.83	60.38	54.53	77.12	78.84	65.96	59.50

	ACT-EN		ACT-MA		ACT-NS		ACT-SS	
	<u>Male</u>	<u>Female</u>	<u>Male</u>	<u>Female</u>	<u>Male</u>	<u>Female</u>	<u>Male</u>	<u>Female</u>
N	348	19	348	19	348	19	342	19
Mean	22.31	23.79	28.44	28.16	29.04	27.79	25.42	24.58
S.D.	3.32	2.74	2.90	3.27	3.38	4.47	4.32	2.80

\*PAE scale for females is not the same as the scale for males.

TABLE 7-1  
 DISTRIBUTION OF HEIGHT AND WEIGHT  
 (Female Cadets)

Height			Weight		
<u>Inches</u>	<u>No.</u>	<u>%</u>	<u>Pounds</u>	<u>No.</u>	<u>%</u>
72-73	0	0.0%	170-179	0	0.0%
70-71	4	3.9	160-169	1	1.0
68-69	13	12.5	150-159	7	6.7
66-67	27	26.0	140-149	17	16.4
64-65	32	30.8	130-139	22	21.2
62-63	23	22.1	120-129	30	28.9
60-61	4	3.9	110-119	21	20.2
58-59	1	1.0	100-109	4	3.9
			90-99	2	1.9
Total	104	100	Total	104	100
Mean	65.04		Mean	128.27	
S.D.	2.43		S.D.	13.85	

TABLE 7-2  
 DISTRIBUTION OF HEIGHT AND WEIGHT  
 (Male Cadets)

Height			Weight		
<u>Inches</u>	<u>No.</u>	<u>%</u>	<u>Pounds</u>	<u>No.</u>	<u>%</u>
82-83	0	0.0%	280-289	1	0.1%
80-81	0	0.0	250-259	0	0.0
78-79	2	0.2	240-249	4	0.3
76-77	38	2.8	230-239	5	0.4
74-75	127	9.3	220-229	12	0.9
72-73	319	23.4	210-219	23	1.7
70-71	407	29.9	200-209	40	2.9
68-69	308	22.6	190-199	68	5.0
66-67	132	9.7	180-189	123	9.0
64-65	25	1.8	170-179	183	13.4
62-63	5	0.4	160-169	240	17.6
60-61	0	0.0	150-159	273	20.0
58-59	0	0.0	140-149	203	14.9
			130-139	121	8.9
			120-129	52	3.8
			110-119	12	0.9
			100-109	2	0.2
Total	1363	100	Total	1362	100
Mean	70.56		Mean	162.55	
S.D.	2.58		S.D.	22.26	

TABLE 8  
HIGH SCHOOL CHARACTERISTICS

	Number	Percent
High School Graduate		
Yes.....	1467	99.9%
No.....	2	0.1
Type of High School in which Senior Year was Completed		
Did not complete senior year.....	2	0.1
Public (Include HS in foreign country).....	1259	85.7
Private (Non-Military).....	173	11.8
Private (Military).....	35	2.4
Rank in Graduating Class		
Did not graduate.....	2	0.1
Top Fifth.....	1070	72.9
Second Fifth.....	287	19.5
Third Fifth.....	95	6.5
Fourth Fifth.....	13	0.9
Bottom Fifth.....	2	0.1
Selected as Valedictorian (First in the Class).....	90	6.1
Selected as Salutatorian (Second in the Class).....	66	4.5
Number of High Schools Attended		
One.....	1138	77.5
Two.....	250	17.0
Three.....	58	3.9
Four or more.....	23	1.5

TABLE 9  
SUBJECT EXPOSURE

	Number	Percent
Studied the Following Mathematics and Science Course(s)		
Physics.....	1198	81.4
Chemistry.....	1377	93.6
Biology.....	1358	92.3
General Science.....	1060	72.1
Trigonometry.....	1336	90.8
Solid Geometry.....	1151	78.2
Calculus.....	663	45.1
Studied the Following Foreign Language(s)		
Spanish.....	569	38.7
French.....	444	30.2
German.....	297	20.2
Other.....	209	14.2
Completed an Honor Course in Any Subject.....	856	58.2

TABLE 10  
AWARDS AND SCHOLARSHIPS

	Number	Percent
Received Following Awards		
National Honor Society.....	866	58.9%
Bausch and Lomb Science Award.....	38	2.6
American Legion Award.....	145	9.9
Boy's State or Girl's State Delegate.....	315	21.4
Other National Awards.....	372	25.3
Took the National Merit/Achievement Scholarship Examination		
No.....	829	56.5
Yes, but didn't qualify.....	405	27.5
Yes, and received commendation.....	159	10.8
Yes, was semi-finalist.....	27	1.8
Yes, was finalist.....	37	2.5
Yes, was merit scholar.....	12	0.8

TABLE 11  
SCHOLARSHIPS

	Number	Percent
Number of Academic Scholarships		
None.....	903	61.5%
One.....	314	21.3
Two.....	140	9.5
Three.....	59	4.0
Four.....	26	1.8
Five.....	9	0.6
Six.....	8	0.5
Seven.....	2	0.1
Eight or more.....	8	0.5
Number of Athletic Scholarships		
None.....	1326	90.3
One.....	79	5.4
Two.....	28	1.9
Three.....	12	0.8
Four.....	9	0.6
Five.....	4	0.3
Six.....	3	0.2
Seven.....	2	0.1
Eight or more.....	6	0.4
Received the Following Military Scholarships*		
Army ROTC Scholarship.....	155	10.5
Navy ROTC Scholarship.....	129	8.8
Air Force ROTC Scholarship.....	67	4.6
Other ROTC Scholarship.....	22	1.5

\*May be more than one.

TABLE 12-1  
CLUBS AND POSITIONS HELD OR AWARDS OBTAINED

	Number	Percent
<b>Elected or Appointed to Following High School Positions</b>		
President of High School Senior Class.....	91	6.2%
Senior Class Officer (Other than President).....	192	13.1
President, Student Body.....	97	6.6
President, High School Class (Other than Senior Class)....	155	10.5
President, Student Council.....	107	7.3
<b>Participated in or Held Following High School Positions*</b>		
Debating or Forensic Society.....	163	11.1
Thespian or Dramatic Club.....	209	14.2
Glee Club.....	145	9.9
High School Band.....	290	19.7
Staff, School Paper.....	285	19.4
Editor or Co-Editor, School Paper.....	111	7.5
Staff, Yearbook or Annual.....	260	17.7
Editor or Co-Editor, Yearbook or Annual.....	91	6.2
<b>Was a Member of the Following Number of Clubs which were Sponsored by the High School</b>		
None.....	78	5.3
One.....	152	10.3
Two.....	286	19.5
Three.....	266	18.2
Four.....	234	15.9
Five.....	186	12.6
Six.....	111	7.5
Seven.....	38	2.6
Eight or more.....	118	8.0
<b>Was President, Vice-President, or Equivalent of the Following Number of Clubs which were Sponsored by High School</b>		
None.....	730	49.8
One.....	455	30.9
Two.....	181	12.3
Three.....	67	4.6
Four.....	28	1.9
Five or more.....	8	0.5
<b>Was a Member of the Following Number of Clubs which were Not Sponsored by High School</b>		
None.....	489	33.2
One.....	498	33.9
Two.....	326	22.2
Three.....	98	6.7
Four.....	26	1.8
Five.....	17	1.2
Six.....	2	0.1
Seven.....	0	0
Eight or more.....	1	0.1

\*May be more than one.

TABLE 12-2  
CLUBS AND POSITIONS HELD OR AWARDS OBTAINED

Was President, Vice President or Equivalent of the Following Number of Non-School Clubs	Number	Percent
None.....	1027	69.8%
One.....	346	23.5
Two.....	78	5.3
Three.....	6	0.4
Four.....	2	0.1
Five or more.....	0	0

Presently is or Has Been One of the Following*	Number	Percent
Boy Scout.....	744	54.5
Girl Scout.....	60	57.7
Explorer Scout.....	198	13.5
Sea Scout.....	15	1.0
Air Scout.....	9	0.6
Camp Counselor.....	196	13.3
Order of the Arrow.....	257	17.5
Eagle Scout (Boys).....	209	15.3
First Class Scout (Girls).....	14	13.5

TABLE 13  
NOMINATIONS AND APPOINTMENTS

Federal Academies where Nomination was Attempted*	Number	Percent
Naval Academy.....	447	30.4%
Air Force Academy.....	438	29.8
Coast Guard Academy.....	195	13.3
Merchant Marine Academy.....	85	5.8

Federal Academies where Appointment was Received*	Number	Percent
Naval Academy.....	56	3.8
Air Force Academy.....	74	5.0
Coast Guard Academy.....	44	3.0
Merchant Marine Academy.....	42	2.9

First Choice of Schools was:	Number	Percent
U.S. Military Academy.....	1163	79.2
U.S. Air Force Academy.....	137	9.3
U.S. Naval Academy.....	68	4.6
U.S. Coast Guard Academy.....	14	1.0
U.S. Merchant Marine Academy.....	3	0.2
A Civilian Liberal Arts College.....	36	2.4
A Civilian Engineering Technical College.....	27	1.8
Another Type of College.....	21	1.4

\*May be more than one.

TABLE 14

## FATHER'S MILITARY STATUS AND RANK

	Number	Percent
Father's Past Military Service and Current Status		
No Military Service or Don't Know.....	442	30.3%
Career in Military Service Terminated for Physical Disability....	34	2.3
Not in Reserve Status, Served Two or More Tours on Active Duty...	108	7.4
Served 20 Years or More and Retired.....	195	13.4
Served Only During a War or for One Peacetime Tour.....	476	32.7
Now on Full Time Active Duty, in a Regular or Reserve Component..	138	9.5
Inactive Reserve Status, Served Two or More Tours on Active Duty.....	21	1.4
Now in Reserves or National Guard.....	25	1.7
Died While on Active Duty.....	6	0.4
Father's Highest Grade**		
E1 - E3 (Private or PFC).....	159	10.9
E4 - E6 (Corporal through Staff Sergeant).....	331	22.5
E7 - E9 (Platoon Sergeant through Sergeant Major).....	164	11.1
Warrant Officer.....	26	1.8
Lieutenant or Captain.....	104	7.1
Major.....	44	3.0
Lieutenant Colonel.....	100	6.8
Colonel.....	75	5.1
General Officer.....	16	1.1

---

\*\*Army Grade or AF, Navy & Marine Corps equivalent.

TABLE 15

CLASS YEAR OF FATHERS WHO ARE USMA GRADUATES

<u>Year</u>	<u>No.</u>	<u>Year</u>	<u>No.</u>
1958	4	1948	2
1957	6	1947	1
1956	10	1946	5
1955	3	1945	2
1954	5	1944	2
1953	2	1943	1
1952	8	1942	2
1951	2	1941	1
1950	3	1940	1
1949	1	1939	1

Total 62

TABLE 16

SPORT PARTICIPATION

	Number	Percent
<b>Participated in Varsity Athletics</b>		
Yes.....	1318	89.6%
No.....	153	10.4
<b>Earned Varsity Letter</b>		
Yes.....	1219	82.9
No.....	252	17.1
<b>Varsity Team Captain</b>		
Yes.....	654	44.5
No.....	817	55.5

TABLE 17-1

VARSDTY SPORT AND TYPE PARTICIPATION  
(Female Cadets)

N = 104

Sport	Participants		Captains		All-Conf		All-State	
	N	%	N	%	N	%	N	%
Baseball or Softball	7	6.7%	1	1.0%	1	1.0%	1	1.0%
Basketball	29	27.9	9	8.7	7	6.7	2	1.9
Cross Country	13	12.5	2	1.9	0	0.0	0	0.0
Fencing	0	0.0	0	0.0	0	0.0	0	0.0
Football	1	1.0	0	0.0	0	0.0	0	0.0
Golf	1	1.0	1	1.0	0	0.0	0	0.0
Gymnastics	7	6.7	1	1.0	0	0.0	0	0.0
Hockey	7	6.7	2	1.9	1	1.0	0	0.0
Lacrosse	1	1.0	0	0.0	0	0.0	0	0.0
Rifle	1	1.0	0	0.0	0	0.0	0	0.0
Skiing	5	4.8	1	1.0	0	0.0	0	0.0
Soccer	5	4.8	2	1.9	0	0.0	0	0.0
Swimming	11	10.6	3	2.9	2	1.9	1	1.0
Tennis	16	15.4	4	3.8	2	1.9	0	0.0
Track	48	46.2	8	7.7	2	1.9	2	1.9
Water Polo	0	0.0	0	0.0	0	0.0	0	0.0
Wrestling	2	1.9	0	0.0	0	0.0	0	0.0
Volleyball	24	23.1	9	8.7	2	1.9	0	0.0

TABLE 17-2

VARSDTY SPORT AND TYPE PARTICIPATION  
(Male Cadets)

N = 1365

<u>Sport</u>	Participants		Captains		All-Conf		All-State	
	<u>N</u>	<u>%</u>	<u>N</u>	<u>%</u>	<u>N</u>	<u>%</u>	<u>N</u>	<u>%</u>
Baseball	265	19.4%	59	4.3%	47	3.4%	7	0.5%
Basketball	290	21.2	69	5.1	40	2.9	11	0.8
Cross Country	220	16.1	51	3.7	26	1.9	4	0.3
Fencing	5	0.4	2	0.1	0	0.0	0	0.0
Football	627	45.9	212	15.5	196	14.4	37	2.7
Golf	67	4.9	18	1.3	6	0.4	1	0.1
Gymnastics	24	1.8	12	0.9	8	0.6	3	0.2
Hockey	41	3.0	14	1.0	7	0.5	0	0.0
Lacrosse	47	3.4	9	0.7	7	0.5	2	0.1
Rifle	59	4.3	19	1.4	4	0.3	4	0.3
Skiing	16	1.2	4	0.3	0	0.0	0	0.0
Soccer	151	11.1	31	2.3	21	1.5	8	0.6
Swimming	101	7.4	36	2.6	17	1.2	10	0.7
Tennis	100	7.3	28	2.1	8	0.6	4	0.3
Track	548	40.1	107	7.8	82	6.0	30	2.2
Water Polo	14	1.0	2	0.1	2	0.1	0	0.0
Wrestling	250	18.3	69	5.1	39	2.9	11	0.8
Volleyball	18	1.3	6	0.4	2	0.1	0	0.0

TABLE 18-1  
MISCELLANEOUS

	Number	Percent
Taken College Level Courses After High School in One of the Following		
A Junior, Community, Extension or Branch College with a one or two year program only.....	92	6.3%
Other Institution with less than a four-year program.....	21	1.4
A Four-year College, not part of a University.....	49	3.3
A University, including its separate Colleges.....	101	6.9
Not Applicable.....	1206	82.1
Attended U.S. Military Academy Preparatory School.....	162	11.0

TABLE 18-2  
MISCELLANEOUS

<u>Parental Income</u>	<u>Number</u>	<u>Percent</u>
Less than \$4,000	21	1.4%
\$4,000-\$6,999	33	2.2
\$7,000-\$9,999	45	3.1
\$10,000-\$12,999	114	7.8
\$13,000-\$14,999	146	9.9
\$16,000-\$19,999	177	12.0
\$20,000-\$24,999	249	17.0
\$25,000-\$29,999	164	11.2
\$30,000 or more	214	14.6
No Response	306	20.8

<u>Parents' Education</u>	<u>Father's Education</u>		<u>Mother's Education</u>	
	<u>Number</u>	<u>Percent</u>	<u>Number</u>	<u>Percent</u>
Some High School or Less	109	7.4%	112	7.6%
High School Graduate	350	23.8	583	39.7
Some College	271	18.4	304	20.7
College Graduate	327	22.3	273	18.6
Some Graduate Work	68	4.6	69	4.7
Master's Degree or Equivalent	244	16.6	92	6.3
Bachelor of Divinity, Bachelor of Law	16	1.1	1	0.1
Ph.D., Ed.D., J.D.	42	2.9	7	0.5
M.D., D.D.S., or Other Professional	24	1.6	8	0.5
No Response	18	1.2	20	1.4

**APPENDIX**  
**CLASS CHARACTERISTICS INVENTORY**  
**CLASS OF 1981**

To the New Cadet:


This questionnaire is being administered under the authority of 10 USC 4334. The principle purpose is to collect administrative, demographic and attitudinal data relating to the entering Cadet Class of 1981. The routine uses to be made of the data are to analyze the characteristics of the class, develop trend data, analyze class attitudes pertinent to USMA programs and for course and services counseling and planning. The information obtained will be used only in statistical reports and will not become a part of your official record. Identifying information is requested to correlate with information that has been and will be collected at various times during your cadet careers. Your providing the information is voluntary. However, any nonresponse will result in incomplete data and may bias the results by preventing their complete interpretation.

**Directions**

1. With this booklet you should have received an answer sheet, titled **GENERAL PURPOSE DATA SHEET (USMA Form 22-1)**.
2. Enter your last name and initials at the top of this answer sheet in the boxes indicated and mark sense the matching letter boxes. Enter your cadet number at the top right of the answer sheet in columns 1-7, and mark sense the matching number boxes. In columns 8-10 enter "0"'s in the boxes, and mark sense the matching number boxes.

**EXAMPLE:** New Cadet Robert J. Johnson, Cadet Number 8110234

LAST NAME (First Eight Letters)	R O B E R T J O H N S O N								F I L		
	C D I N I T I A L S								3 1 0		
	A B C D E F G H I J K L M N O P Q R S T U V W X Y Z	A B C D E F G H I J K L M N O P Q R S T U V W X Y Z	A B C D E F G H I J K L M N O P Q R S T U V W X Y Z	A B C D E F G H I J K L M N O P Q R S T U V W X Y Z	A B C D E F G H I J K L M N O P Q R S T U V W X Y Z	A B C D E F G H I J K L M N O P Q R S T U V W X Y Z	A B C D E F G H I J K L M N O P Q R S T U V W X Y Z	A B C D E F G H I J K L M N O P Q R S T U V W X Y Z	A B C D E F G H I J K L M N O P Q R S T U V W X Y Z	A B C D E F G H I J K L M N O P Q R S T U V W X Y Z	A B C D E F G H I J K L M N O P Q R S T U V W X Y Z



**UNITED STATES  
MILITARY  
ACADEMY**

8	7	6	5	4	3	2	1
0	0	0	0	0	0	0	0

USE ORDINARY PENCIL - NOT BALLPOINT PEN. MARK CLEARLY. ERASE COMPLETELY WHEN MAKING CHANGES OR CORRECTIONS.

3. Read each question and all its responses carefully before selecting your answer.
4. Mark your answers on the Answer Sheet. USE AN ORDINARY #2 PENCIL - not a ballpoint pen, nor an electrographic pencil.
5. Be sure that your answer marks are heavy and that you blacken the whole rectangle. Do not go outside the lines of the box. Look at the example below.
 

11. 

1	2	3	4	5	6	7	8	9	0
6. If you decide to change an answer, erase the mark completely before entering a new one.
7. Check your answers once in a while to be sure that the number on the Answer Sheet is the same as the number of the question that you are answering. Note that the **QUESTION NUMBERS GO ACROSS THE ANSWER SHEET IN ROWS**, not down the Answer Sheet in columns.
8. Do not tear or fold the Answer Sheet.

1. To what New Cadet Company are you assigned?

- |           |            |
|-----------|------------|
| A. First  | E. Fifth   |
| B. Second | F. Sixth   |
| C. Third  | G. Seventh |
| D. Fourth | H. Eighth  |

---

HIGH SCHOOL BACKGROUND

2. In what type of high school did you complete your senior year?

- A. Did not complete senior year.
- B. Public (includes high school in a foreign country).
- C. Private (military).
- D. Private (non-military).

3. How many high schools did you attend?

- A. One.
- B. Two.
- C. Three.
- D. Four.
- E. Five or more.

4. Did you complete an honors course in any subject in high school?

- A. Yes.
- B. No.

5. In what fifth of your graduating class did you rank?

- A. Top fifth.
- B. Second fifth.
- C. Third fifth.
- D. Fourth fifth.
- E. Bottom fifth.
- F. Did not graduate.

6. Were you first or second in your graduating class in high school?

- A. Yes, I was first.
- B. Yes, I was second.
- C. No.

7. Did you take the National Merit/Achievement Scholarship Examination?

- A. No.
- B. Yes, but not qualified.
- C. Yes, and received commendation.
- D. Yes, was a semi-finalist
- E. Yes, was a finalist.
- F. Yes, was merit scholar.

8-12. Did you receive any of the following awards?

<u>CODE</u>	<u>RESPONSE</u>
A	Yes
B	No

8. National Honor Society.
  9. Pausch and Lomb Science Award.
  10. American Legion Award.
  11. Boys or Girls State Delegate.
  12. Other national awards.
- 

CLUBS AND ORGANIZATIONS

13-20. In high school did you participate or hold a position in any of the following?

<u>CODE</u>	<u>RESPONSE</u>
A	Yes
B	No

13. Debating or forensic society.
14. Thespian or dramatic club.
15. Glee club.
16. High school band.
17. Editor or co-editor, school paper
18. Staff, school paper.
19. Editor or co-editor, yearbook or annual.
20. Staff, yearbook or annual.

21-25. In high school were you elected or appointed to any of the following?

<u>CODE</u>	<u>RESPONSE</u>
A	Yes
B	No

21. President of high school senior class.
22. President, student body.
23. President, student council.
24. President, high school class other than senior class.
25. Senior class officer (other than president).

26-30. Answer questions 26-30 using the codes below:

<u>CODES</u>	<u>RESPONSE</u>
A	None
B	1
C	2
D	3
E	4
F	5
G	6
H	7
I	8 or more

26. Of how many high school clubs or organizations were you a member?
27. Of how many high school clubs were you president/vice president/or equivalent?
28. Of how many clubs or organizations NOT sponsored by your high school were you a member?
29. Of how many of those NON-SPONSORED clubs or organizations were you president, vice president or equivalent?
30. Of how many of those NON-SPONSORED clubs or organizations were you an officer other than president, vice president or equivalent?
31. Did you participate in varsity athletics in high school?
- A. Yes.  
B. No.
32. Did you earn a varsity athletic letter?
- A. Yes.  
B. No.
33. Were you an athletic team captain?
- A. Yes.  
B. No.

---

COURSE WORK

34-44. Did you take any of the courses listed below in high school?

<u>CODE</u>	<u>RESPONSE</u>
A	Yes
B	No

34. Spanish	39. Trigonometry
35. French	40. Calculus
36. German	41. General Science
37. Other language not listed	42. Biology
38. Solid Geometry	43. Chemistry
	44. Physics

SCOUTING EXPERIENCE

45-50. Are you now or have you been any of the following?

<u>CODE</u>	<u>RESPONSE</u>
A	Yes
B	No

45. Boy Scout/Girl Scout.

46. Explorer Scout.

47. Order of the Arrow.

48. Camp Counselor.

49. Sea Scout.

50. Air Scout.

51. Have you earned the rank of Eagle Scout (boys) or First Class Scout (girls)?

A. Yes.

B. No.

---

COLLEGE EXPERIENCE

52. What type of college did you attend?
- A. Not applicable--I did not attend.
- B. A junior, community, extension or branch college with a one or two year program only.
- C. Some other institution with less than a four-year program.
- D. A four-year college, not part of a university.
- E. A University, including its separate colleges.

---

SCHOLARSHIPS

53. How many definite offers of ACADEMIC scholarships did you reject in order to attend the U.S. Military Academy?
- |         |              |
|---------|--------------|
| A. None | F. 5         |
| B. 1    | G. 6         |
| C. 2    | H. 7         |
| D. 3    | I. 8 or more |
| E. 4    |              |
54. How many definite offers of full ATHLETIC scholarships for room, board, and tuition did you reject in order to attend the U.S. Military Academy?
- |         |              |
|---------|--------------|
| A. None | F. 5         |
| B. 1    | G. 6         |
| C. 2    | H. 7         |
| D. 3    | I. 8 or more |
| E. 4    |              |

55-58. Did you receive any of the MILITARY scholarships listed below?

<u>CODE</u>	<u>RESPONSE</u>
A	Yes
B	No

- 55. Army ROTC Scholarship.
  - 56. Air Force ROTC Scholarship.
  - 57. Navy ROTC Scholarship
  - 58. Any other ROTC Scholarship.
- 

PARENTS' EDUCATION

59-60. Using the responses listed below, indicate the highest level of formal education obtained by your parents in questions 59 and 60.

<u>CODE</u>	<u>RESPONSE</u>
A	Some high school or less
B	High school graduate
C	Some college
D	College degree
E	Some graduate work
F	Master's degree or equivalent
G	Bachelor of Divinity, Bachelor of Law
H	Ph.D., Ed.D., or J.D.
I	MD, DDS, or other professional

- 59. Father's highest level of formal education.
  - 60. Mother's highest level of formal education.
-

ETHNIC GROUP IDENTIFICATION

61. From the list of ethnic groups below, select the one which best describes your ethnic group. Enter the corresponding alpha-numeric code at item 61 on the answer sheet.

<u>CODE</u>	<u>ETHNIC GROUP</u>
I9	Allied/Foreign Cadet
A2	Afro-American/Black/Negro
C3	Aleutian (Not Eskimo)
B3	American Indian
	ASIAN AMERICAN (Asian/Pacific derivation):
D4	Chinese American
H3	Filipino American
E6	Guamanian
E5	Hawaiian
F4	Japanese American
F5	Korean American
F5	Other Asian/Pacific derivation not listed above.
C1	Caucasian/White
C4	Eskimo (Not Aleutian)
F1	Jewish/Hebrew
	SPANISH DESCENT:
H8	Cuban American
G7	Mexican American/Chicano
G8	Puerto Rican
G6	Other Spanish Descent not listed above.

For other ethnic groups not listed above, make no entry at Item 61 and write your ethnic group in the top right margin of your answer sheet.

62. What is your sex?

- A. Male
- B. Female

FATHER'S MILITARY EXPERIENCE

64. If your father is serving (or served) as an enlisted man, what is his present grade (or was highest grade)?

<u>PAY GRADE</u>	<u>ARMY EQUIVALENT</u>	<u>NAVY EQUIVALENT</u>	<u>AIR FORCE EQUIVALENT</u>
A. E1 - E3	Private or PFC	Seaman	Airman
B. E4	Corporal	Petty Officer Third Class	Sergeant
C. E5	Sergeant	Petty Officer Second Class	Staff Sergeant
D. E6	Staff Sergeant	Petty Officer First Class	Technical Sergeant
E. E7	Platoon Sergeant	Chief Petty Officer	Master Sergeant
F. E8	Master Sergeant/ First Sergeant	Senior Chief Petty Officer	Senior Master Sergeant
G. E9	Sergeant Major/ Command Sergeant Major	Master Chief Petty Officer	Chief Master Sergeant
H.	Does not apply/do not know.		

65. If your father is serving (or served) as an officer, what is his present grade (or was his highest grade)?

A.	Does not apply/do not know	<u>NAVY EQUIVALENT</u>
B.	Warrant Officer	Warrant Officer
C.	Lieutenant	Ensign/Lieutenant Junior Grade
D.	Captain	Lieutenant
E.	Major	Lieutenant Commander
F.	Lieutenant Colonel	Commander
G.	Colonel	Captain
H.	General Officer	Admiral

NOMINATIONS AND APPOINTMENTS

66-69. Did you attempt to obtain nominations this year from any of the Federal Academies listed below?

<u>CODE</u>	<u>RESPONSE</u>
A	Yes
B	No

66. U.S. Naval Academy.
67. U.S. Air Force Academy.
68. U.S. Coast Guard Academy.
69. U.S. Merchant Marine Academy.

70-73. Did you receive appointments this year from any of the Federal Academies listed below?

	<u>CODE</u>	<u>RESPONSE</u>
	A	Yes
	B	No
70. U.S. Naval Academy.		
71. U.S. Air Force Academy.		
72. U.S. Coast Guard Academy.		
73. U.S. Merchant Marine Academy.		
74. Which of the following schools was your first choice?		
A. U.S. Military Academy.		
B. U.S. Air Force Academy.		
C. U.S. Naval Academy.		
D. U.S. Coast Guard Academy.		
E. U.S. Merchant Marine Academy.		
F. A civilian liberal arts college.		
G. A civilian engineering college (e.g., Cal Tech, MIT, etc.).		
H. Another type of college.		

---

ENTRANCE PREPARATIONS

75-78. Use the following codes for questions 75-78.

	<u>CODE</u>	<u>RESPONSE</u>
	A	Strongly agree
	B	Agree
	C	Don't know
	D	Disagree
	E	Strongly disagree
75. I received adequate information to understand the requirements of West Point.		
76. The primary function of my cadet supervisors should be to act as examples of sound leadership.		
77. The primary function of my cadet supervisors should be to act as teachers of soldierly skills.		
78. The primary function of my cadet supervisors should be to act as disciplinarians.		
79. How many hours did you prepare for the four item physical aptitude examination (pullup or flexed arm hang, standing long jump, basketball throw, and shuttle run) administered to you for admission?		
A. I did not prepare for the examination.		
B. Less than one hour.		
C. One to three hours.		
D. Four to seven hours.		
E. More than seven hours.		

80. If you replied C, D, or E to Question 79, do you think your preparation for the Physical Aptitude Examination helped you?
- A. Replied A or B to Question 79.
  - B. No.
  - C. Very little.
  - D. Moderately.
  - E. Greatly.
81. If you had to take the Physical Aptitude Examination over again, would you prepare more than you did for the original examination?
- A. Yes.
  - B. No.
82. Prior to admission did you participate in a running program at least three times a week?
- A. Yes.
  - B. No.
83. If you replied "Yes" to Question 82, was your program primarily jogging, sprinting, or a combination of the two?
- A. Replied "No" to Question 82.
  - B. Jogging.
  - C. Sprinting.
  - D. Combination of jogging and sprinting.
84. Prior to admission did you participate in a strength training program at least three times a week?
- A. Yes.
  - B. No.
85. If you replied "Yes" to Question 84, was your program primarily:
- A. Replied "No" to Question 84.
  - B. Weight training with barbells.
  - C. Exercise machinery, such as the Universal or Nautilus.
  - D. Both barbells and exercise machinery.
86. Do you feel that you are satisfactorily prepared to meet the PHYSICAL demands of this summer's training at USMA?
- A. Yes.
  - B. No.

---

BACKGROUND/INTEREST IN LITERATURE COURSES

87. Some high schools offer a broad survey course in masterpieces of world literature (as opposed to courses in simply American or British literature). Such courses normally begin with the ancient writers such as Homer and progress through the major European, British, and American works of later periods. Have you taken such a course in high school and, if so, what grade did you make?
- A. No, I did not take such a course in high school.
  - B. Yes, and I made an A.
  - C. Yes, and I made a B.
  - D. Yes, and I made less than a B.

88. Have you taken a course such as the one described in Question 87 in college and, if so, what grade did you make?
- A. No, I did not take such a course in college/did not attend college.
  - B. Yes, and I made an A.
  - C. Yes, and I made a B.
  - D. Yes, and I made less than a B.
89. How many semester hours of college credit in English and literature do you have?
- A. None.
  - B. 2 to 3.
  - C. 4 to 6.
  - D. 7 to 9.
  - E. More than 9.
90. English 201 is the standard third class literature course at USMA. It is a broad survey course in world literature masterpieces similar to the one described in Question 87 above. Are you interested in taking a validation examination, which, if successfully passed, excuses you from taking English 201?
- A. Yes.
  - B. No.

---

LIBRARY SKILLS

91. How often have you used a library?
- A. Seldom or never.
  - B. Occasionally.
  - C. Frequently.
92. What kind of library have you used?
- A. Public.
  - B. School (elementary or high school).
  - C. Special (company, research, technical, etc.).
  - D. College or university.
  - E. Combination of two or more of the above.
93. For what purposes have you used a library? (SELECT ONE RESPONSE)
- A. To accomplish school requirements.
  - B. For recreational reading, viewing or listening.
  - C. Other (private research, study hall, social reasons).
  - D. Combination of A and B.
  - E. Combination of A and C.
  - F. Combination of B and C.
  - G. Combination of A, B, and C.
94. Are you familiar with use of the card catalog?
- A. Yes, very familiar.
  - B. Yes, but not too familiar.
  - C. No.

95. Which of the following library classification systems have you used?
- A. Dewey Decimal System.
  - B. Library of Congress System
  - C. Both.
96. Have you consulted periodical indices to find current information in magazines and newspapers?
- A. Yes, frequently.
  - B. Yes, occasionally.
  - C. No.
97. Which indices have you used?
- A. Readers Guide to Periodical Literature.
  - B. New York Times Index.
  - C. Engineering Index.
  - D. Other.
  - E. A combination of the above.
98. If you have had an opportunity to use microfilm, which format have you used?
- A. I have not used microfilm.
  - B. Microfilm.
  - C. Microfiche.
  - D. Microprint.
  - E. A combination of B, C, and D.
99. What is your best estimate of the total income last year of your parental family? Consider annual income from all sources before taxes.
- A. Less than \$4,000
  - B. \$4,000 - \$6,999
  - C. \$7,000 - \$9,999
  - D. \$10,000 - \$12,999
  - E. \$13,000 - \$15,999
  - F. \$16,000 - \$19,999
  - G. \$20,000 - \$24,999
  - H. \$25,000 - \$29,999
  - I. \$30,000 or more

UNCLASSIFIED

SECURITY CLASSIFICATION OF THIS PAGE (When Data Entered)

REPORT DOCUMENTATION PAGE		READ INSTRUCTIONS BEFORE COMPLETING FORM	
1. REPORT NUMBER 14) 9B1.01-77-019	2. GOVT ACCESSION NO.	3. RECIPIENT'S CATALOG NUMBER	
4. TITLE (and Subtitle) 6) CHARACTERISTICS OF THE CLASS OF 1981		5. TYPE OF REPORT & PERIOD COVERED	
7. AUTHOR(s) 10) John W. Houston		6. PERFORMING ORG. REPORT NUMBER	
9. PERFORMING ORGANIZATION NAME AND ADDRESS Office of the Director of Institutional Research United States Military Academy West Point, New York 10996		8. CONTRACT OR GRANT NUMBER(s)	
11. CONTROLLING OFFICE NAME AND ADDRESS Same as #9 above.	12. REPORT DATE 12) 33) 11) Sep 1977	10. PROGRAM ELEMENT, PROJECT, TASK AREA & WORK UNIT NUMBERS Project No. 245	
14. MONITORING AGENCY NAME & ADDRESS (if different from Controlling Office) United States Military Academy West Point, New York 10996		13. NUMBER OF PAGES 30 + ii	
		15. SECURITY CLASS. (of this report) Unclassified	
		15a. DECLASSIFICATION/DOWNGRADING SCHEDULE	
16. DISTRIBUTION STATEMENT (of this Report) Reproduction of this document in whole or in part must have prior approval of the Superintendent, United States Military Academy, West Point, New York.			
17. DISTRIBUTION STATEMENT (of the abstract entered in Block 20, if different from Report)			
18. SUPPLEMENTARY NOTES			
19. KEY WORDS (Continue on reverse side if necessary and identify by block number) Achievements Admissions Scores Analysis Characteristics Freshmen			
20. ABSTRACT (Continue on reverse side if necessary and identify by block number) This report presents the biographical characteristics and achievements of the 1,469 new cadets who entered the United States Military Academy in the Class of 1981.			

DD FORM 1473 EDITION OF 1 NOV 65 IS OBSOLETE

UNCLASSIFIED  
SECURITY CLASSIFICATION OF THIS PAGE (When Data Entered)

elt