

AD-A077 822

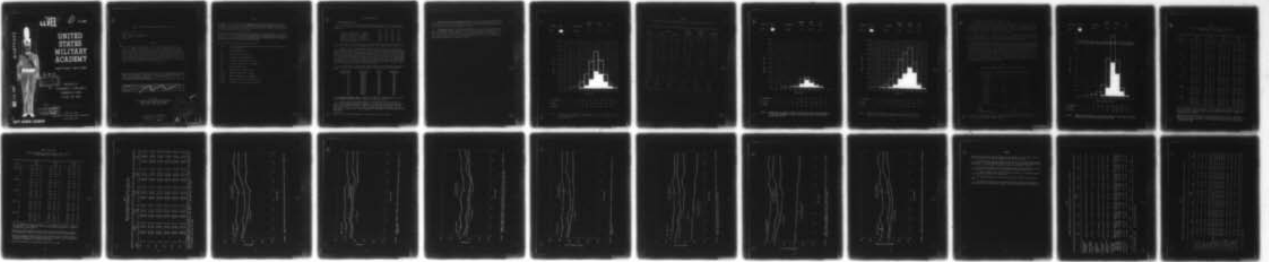
MILITARY ACADEMY WEST POINT NY OFFICE OF THE DIRECTO--ETC F/6 5/9  
TRENDS IN ADMISSION VARIABLES THROUGH THE CLASS OF 1981, (U)  
JAN 78 J W HOUSTON

UNCLASSIFIED

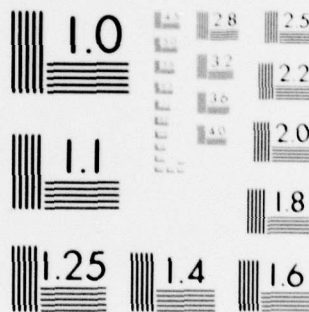
9B1.01-78-008

NL

| OF |  
AD  
A077822



END  
DATE  
FILMED  
1-80  
DDC



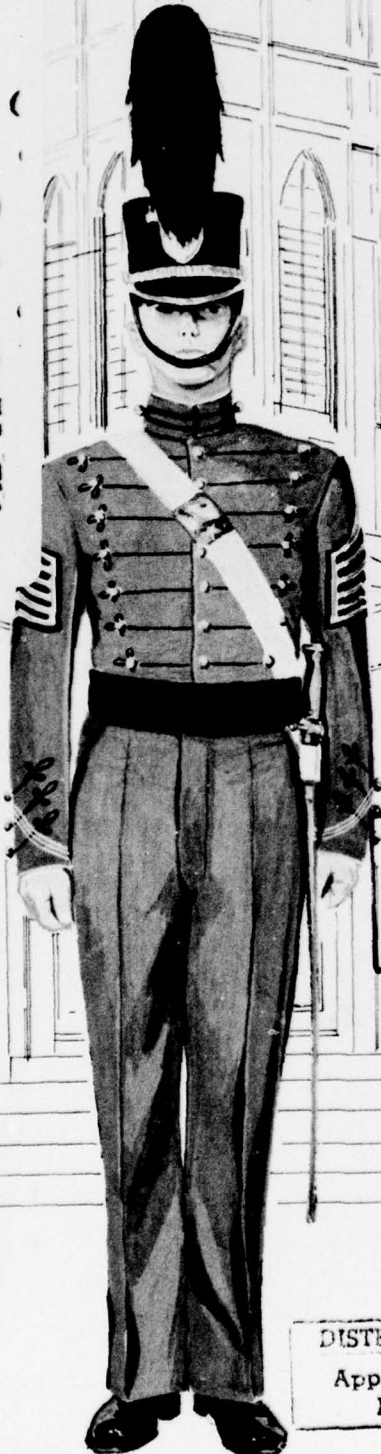
MICROCOPY RESOLUTION TEST CHART  
NATIONAL BUREAU OF STANDARDS-1963-A

**LEVEL**

①

78-008

AD A 077822



# UNITED STATES MILITARY ACADEMY

WEST POINT · NEW YORK

DDC  
RECEIVED  
DEC 10 1979  
RECEIVED

*See 1413 in Locker*

TRENDS IN  
ADMISSION VARIABLES  
THROUGH THE  
CLASS OF 1981

79 20 9 231

DISTRIBUTION STATEMENT A

Approved for public release  
Distribution Unlimited

OFFICE OF THE  
DIRECTOR OF INSTITUTIONAL RESEARCH  
JANUARY 1978

**DUTY-HONOR-COUNTRY**

DDC FILE COPY

TRENDS IN ADMISSION VARIABLES THROUGH THE CLASS OF 1981

Report No. 9B1.01-78-008  
Project No. 262  
Prepared by: Mr. John W. Houston  
Typist: Susan M. Griffiths  
January 1978

ABSTRACT

The United States Military Academy uses the Whole Candidate concept in the selection of candidates for admission. This concept encompasses three broad areas: scholastic, leadership potential, and physical condition and aptitude. The entrance scores for each of these areas are compared with previous classes. The American College Testing Program scores were used to admit 367 cadets to the Class of 1981. These scores are included and are shown with the previous five years in which the ACT scores were used. The College Board scores and other admission variables are shown for a ten year period. The PAE scores for the Class of 1981 are shown for male and female cadets separately, since the PAE scale for females is not the same as the scale for males.

**NOTE:** Any conclusions in this report are not to be construed as official U.S. Military Academy or Department of the Army positions unless so designated by other authorized documents.

**DISTRIBUTION:** This document is prepared for official purposes only. Its contents may not be reproduced or distributed (in whole or in part) without specific permission of the Superintendent, U.S. Military Academy, in each instance.

OFFICE OF  
THE DIRECTOR OF INSTITUTIONAL RESEARCH  
UNITED STATES MILITARY ACADEMY  
WEST POINT, NEW YORK 10996

DISTRIBUTION STATEMENT A

Approved for public release;  
Distribution Unlimited

Accession For	
NTIS GRA&I	<input checked="" type="checkbox"/>
DDC TAB	<input type="checkbox"/>
Unannounced	<input type="checkbox"/>
Justification	<input type="checkbox"/>
By _____	
Distribution/	
Availability Codes	
Dist.	Availand/or special
A	

## PREFACE

This report, along with the report, Characteristics of the Class of 1981, prepared in September 1977, and the report, New Cadets and Other College Freshmen, Class of 1981, to be prepared in the Spring of 1978, comprise the general reports prepared by the Office of the Director of Institutional Research to describe the Class of 1981 at the time members of the Class entered the Military Academy.

The same three reports were prepared for the Classes of 1971 through 1980. (For 1971, this report was called Analysis of the Characteristics of the Class of 1971, and for the Classes of 1972 and 1973, it was called Background and Predicted Success of Cadets in the Classes of ---- with Comparison with Previous Classes.) Similar reports are planned on each future class when it enters the Military Academy.

The following abbreviations are used in this report:

CEER	College Entrance Examination scores and High School Rank scores statistically combined
HSR	High School Rank score
LPS	Leadership Potential Score
PAE	Physical Aptitude Examination
SAT-V	Scholastic Aptitude Test - Verbal
SAT-M	Scholastic Aptitude Test - Mathematics
WCS	Whole Candidate Score
ASR	Aptitude for the Service Rating
ACT-EN	American College Test - English
ACT-MA	American College Test - Mathematics
ACT-NA	American College Test - Natural Science
ACEER	A composite score of ACT tests and HSR

PERFORMANCE MEASURES

1. Academic Qualifications

a. The mean College Entrance Examination Board and American College Test scores for members of the Classes of 1978 through 1981 who were admitted by use of the respective scores are:

	'81	'80	'79	'78
Scholastic Aptitude Test - Verbal	548	550	550	562
Scholastic Aptitude Test - Mathematics	629	638	629	635
American College Test - English	22.4	22.6	22.2	22.5
American College Test - Mathematics	28.4	28.7	28.9	29.5
American College Test - Natural Science	29.0	29.2	28.6	28.8
High School Rank Score	563	572	557	558

b. The Class of 1981 scores for SAT-M and High School Rank are significantly\* lower than for the Class of 1980 but approximately equal to scores for the Class of 1979.

c. Comparisons with available data aid in interpreting the level of these scores. The mean cadet score for the Class of '81 on SAT-V is higher than that of 85% of a representative sample of male secondary school seniors. The mean cadet score on SAT-M was also higher than that of 89% of the secondary school seniors. The mean of one million secondary school college-bound seniors in the 1976-1977 school year on SAT-V is 429 and on SAT-M is 470. The means of the American College Test scores were well above the national norms for students at 1,158 colleges. The mean cadet score for the Class of '81 on ACT-English is higher than 81% of the students used in the national norm; and the mean cadet ACT-Math is higher than 92% of those in the national norm; and the mean cadet ACT-Natural Science score is higher than 87% of those in the national norm.

d. The mean scores of the Scholastic Aptitude Test of all college-bound high school seniors, male and female, nationwide has shown a steady decline over the past twelve years.

<u>College Class</u>	<u>Year Tested</u>	<u>Verbal</u>	<u>Mathematics</u>
Class of '68	1963-64	475	498
'69	1964-65	473	496
'70	1965-66	471	496
'71	1966-67	466	492
'72	1967-68	466	492
'73	1968-69	463	493
'74	1969-70	460	488
'75	1970-71	455	488
'76	1971-72	453	484
'77	1972-73	445	481
'78	1973-74	444	480
'79	1974-75	434	472
'80	1975-76	431	472
'81	1976-77	429	470

2. Potential for Success at USMA. Selection for admission is based on ability in three areas: academic aptitude, physical aptitude, and leadership potential.

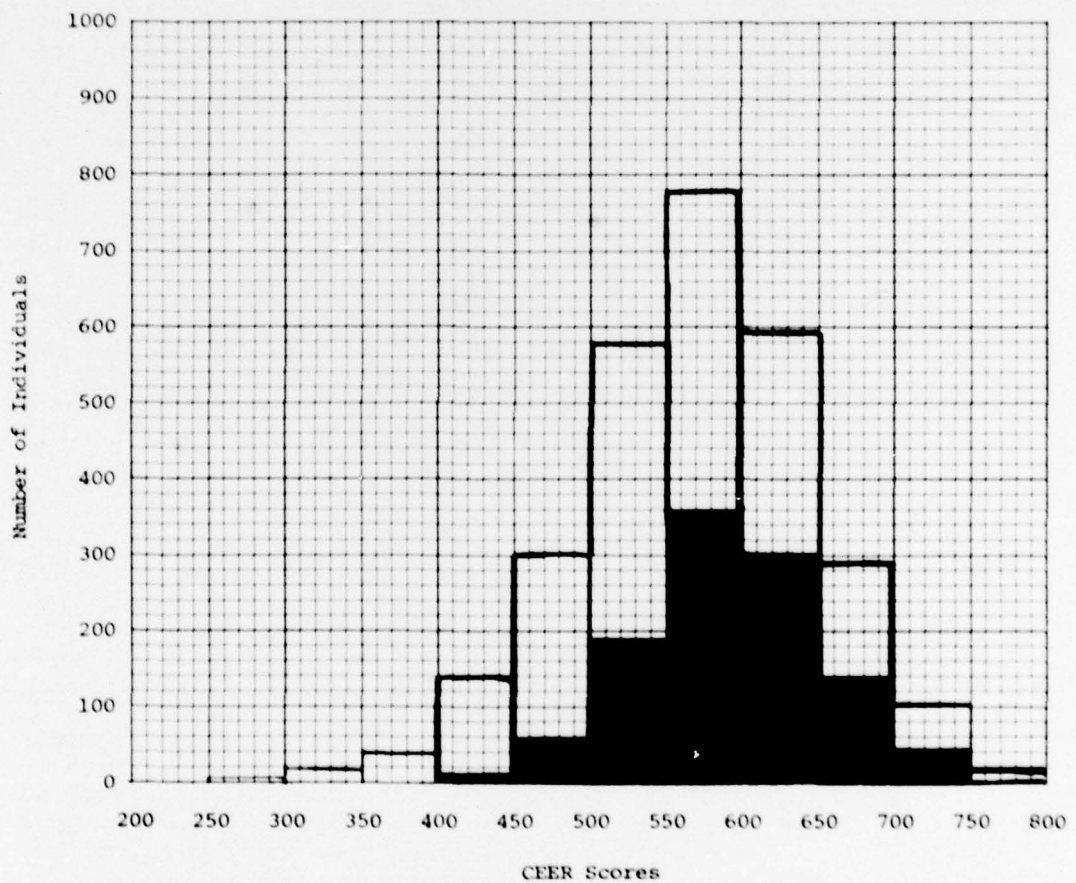
a. Each candidate is evaluated either on his College Board scores (CEER) or his American College Test program scores (ACEER). If he has both, the higher of the two is used. Figure 1 provides a graphic comparison of the number of cadets within each CEER range as shown in Table 1, with the number of completely examined candidates within the same ranges. Figure 2 shows a similar comparison of candidates and cadets evaluated using ACEER scores.

\*Statistical significance referred to in this report is at the .05 level.

b. General Potential for Physical Activities. The average Physical Aptitude Examination score of 563 for men in the USMA Class of 1981 is eight points higher than the score of 555 for the Class of 1980. The women in the Class of 1981 had a mean PAE score of 527. The distribution of these scores is shown in Table 1.

c. Leadership Potential. The Leadership Potential Scores are derived from the ratings of the candidate by his secondary school teachers and evaluations by admissions officials of his quality of participation in athletic and other school and community activities. The mean LPS for this Class (606) is the mean of the Class of 1980. A graphic comparison of the distribution of Leadership Potential Scores in this Class with that in the candidate population is provided in Figure 3.

		<u>Number</u>	<u>Mean</u>	<u>SD</u>	
Candidates	□	Candidates	2845	569.35	77.43
Cadets	■	Cadets	1102	592.16	60.12



No. Candidates	0	4	18	38	134	300	571	779	594	289	104	14
% Entered	0	0	0	0	7.5	19.3	32.7	45.8	51.3	47.4	41.3	35.7
No. Cadets	0	0	0	0	10	58	187	357	305	137	43	5

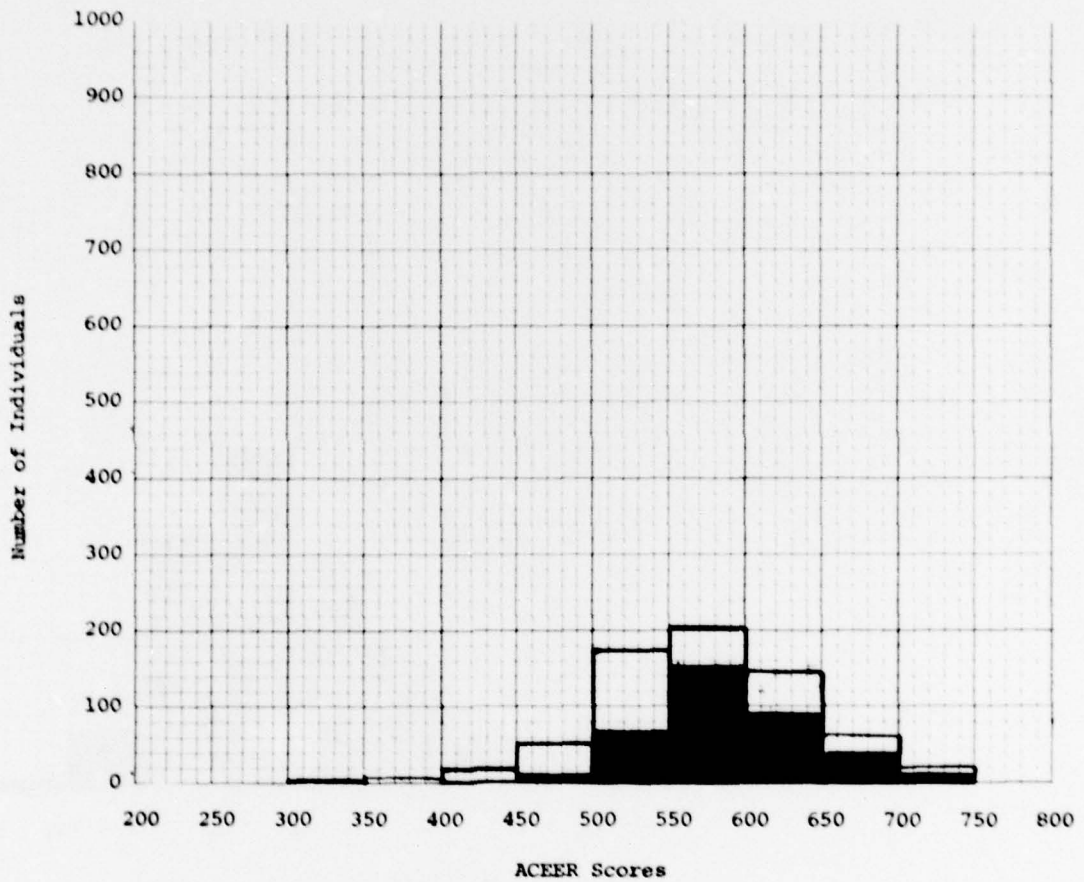
FIGURE 1. COMPARISON OF THE NUMBER OF CADETS (EVALUATED USING CEER) WITH THE NUMBER OF FULLY EXAMINED CANDIDATES (EVALUATED USING CEER) AT EACH CEER SCORE LEVEL FOR THE CLASS OF 1981.

TABLE 1

DISTRIBUTION OF SCORES ON WHOLE CANDIDATE SCORE COMPONENTS FOR THE CLASS OF 1981

Score Ranges	Academic				Male Physical Aptitude (PAE)		Female Physical Aptitude (PAE)		Leadership Potential (LPS)	
	CEER		ACEER		No.	%	No.	%	No.	%
750-800	5	0.5%	0	0	13	1.0%	2	1.9%	6	0.4%
700-749	43	3.9	10	2.7	46	3.4	1	1.0	78	5.3
650-699	137	12.4	39	10.6	124	9.1	3	2.9	335	22.8
600-649	305	27.7	92	25.0	243	17.9	7	6.7	442	30.1
550-599	357	32.4	146	39.9	312	22.9	13	12.5	314	21.4
500-549	187	17.0	68	18.5	324	23.8	37	35.6	197	13.4
450-499	58	5.3	11	3.0	239	17.6	23	22.1	68	4.6
400-449	10	0.9	1	0.3	55	4.0	15	14.4	21	1.4
350-399	0	0	0	0	4	0.3	1	1.0	6	0.4
300-349	0	0	0	0	0	0	2	1.9	2	0.1
250-299	0	0	0	0	0	0	0	0	0	0
200-249	0	0	0	0	1	0.1	0	0	0	0
<b>Total</b>	<b>1102</b>		<b>367</b>		<b>1361</b>		<b>104</b>		<b>1469</b>	
<b>Mean</b>	<b>592.16</b>		<b>589.70</b>		<b>562.77</b>		<b>517.38</b>		<b>606.21</b>	
<b>S.D.</b>	<b>60.12</b>		<b>52.25</b>		<b>75.15</b>		<b>77.16</b>		<b>67.85</b>	

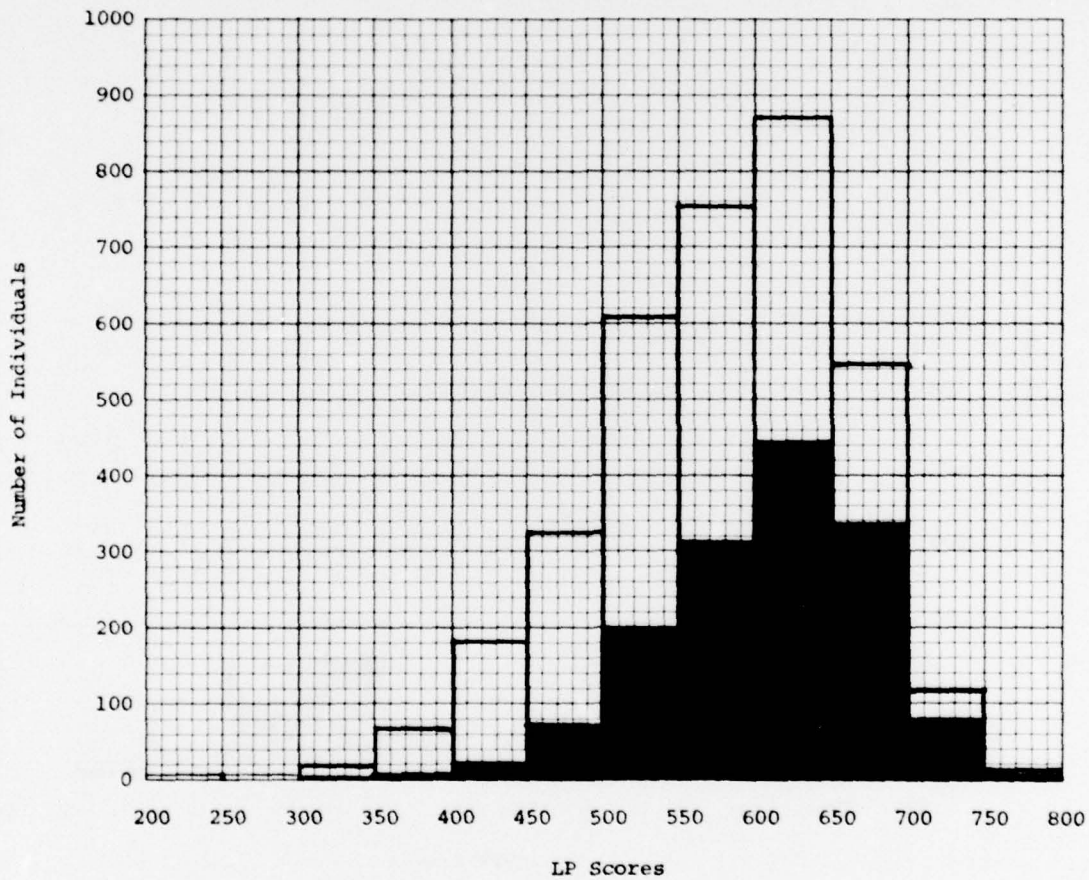
		<u>Number</u>	<u>Mean</u>	<u>SD</u>	
Candidates	□	Candidates	646	571.11	66.15
Cadets	■	Cadets	367	589.70	52.25



No. Candidates	0	0	1	5	17	50	168	202	125	60	18	0
% Entered	0	0	0	0	5.9	22.0	40.5	72.3	73.6	65.0	55.8	0
No. Cadets	0	0	0	0	1	11	68	146	92	39	10	0

FIGURE 2. COMPARISON OF THE NUMBER OF CADETS (EVALUATED USING ACEER) WITH THE NUMBER OF FULLY EXAMINED CANDIDATES (EVALUATED USING ACEER) AT EACH ACEER SCORE LEVEL FOR THE CLASS OF 1981.

	<u>Number</u>	<u>Mean</u>	<u>SD</u>
Candidates	3472	575.66	81.86
Cadets	1469	606.21	67.85



No. Candidates	4	4	19	64	183	324	606	749	871	523	119	9
% Entered	0	0	10.5	9.4	11.5	21.0	32.5	41.9	50.7	64.1	65.5	66.7
No. Cadets	0	0	2	6	21	68	197	314	442	335	78	6

FIGURE 3. COMPARISON OF THE NUMBER OF CADETS WITH THE NUMBER OF FULLY EXAMINED CANDIDATES AT EACH LEADERSHIP POTENTIAL LEVEL FOR THE CLASS OF 1981

### 3. Overall Appraisal of Potential for Success at USMA

a. The Whole Candidate Score is a weighted score consisting of 60% CEER (or ACEER), 10% PAE, and 30% LPS. Table 2 shows the distribution of WCS's in the Class of '81. Moving the decimal point one place to the left converts the WCS to a scale similar to that of its components. Due solely to combining scores, the frequencies of the relatively high and low scores are reduced; i.e., the individuals with the highest scores on one variable do not necessarily have the highest scores on the others.

b. The mean WCS for the Class of 1981 is 5927.2, compared to 5945.2 for the Class of 1980. Graphic comparison of the number of cadets whose scores fall in each WCS range with the number of candidates whose scores fall within the same ranges is provided by Figure 4. The scores have been divided by ten in the figure for ease of comparison.

4. Trends in Admission Scores. Looking only at the Classes of 1981 and 1980 gives a very microscopic view of how well the Academy is attracting outstanding young people for admission. Therefore, trend data are provided for Classes of 1972 through 1981. See Tables 3 and 4 and Figures 5 through 11. These data\* show that the academic measures have dropped off somewhat through the Class of 1977 and after a sharp rise for the Class of 1978, the scores for the Class of 1979 dropped, then rose for the Class of 1980, and dropped slightly for the Class of 1981. Table 5 shows the ACEER and the American College Test program scores. There were 284 cadets in the Class of 1976, 435 in the Class of 1977, 402 in the Class of 1978, 394 in the Class of 1979, 385 in the Class of 1980, and 367 in the Class of 1981, admitted using these scores. Table 6 shows selected characteristics of the entering cadets of the Classes of 1973 through 1981, and Table 7 shows high school activities and awards of cadets of these classes.

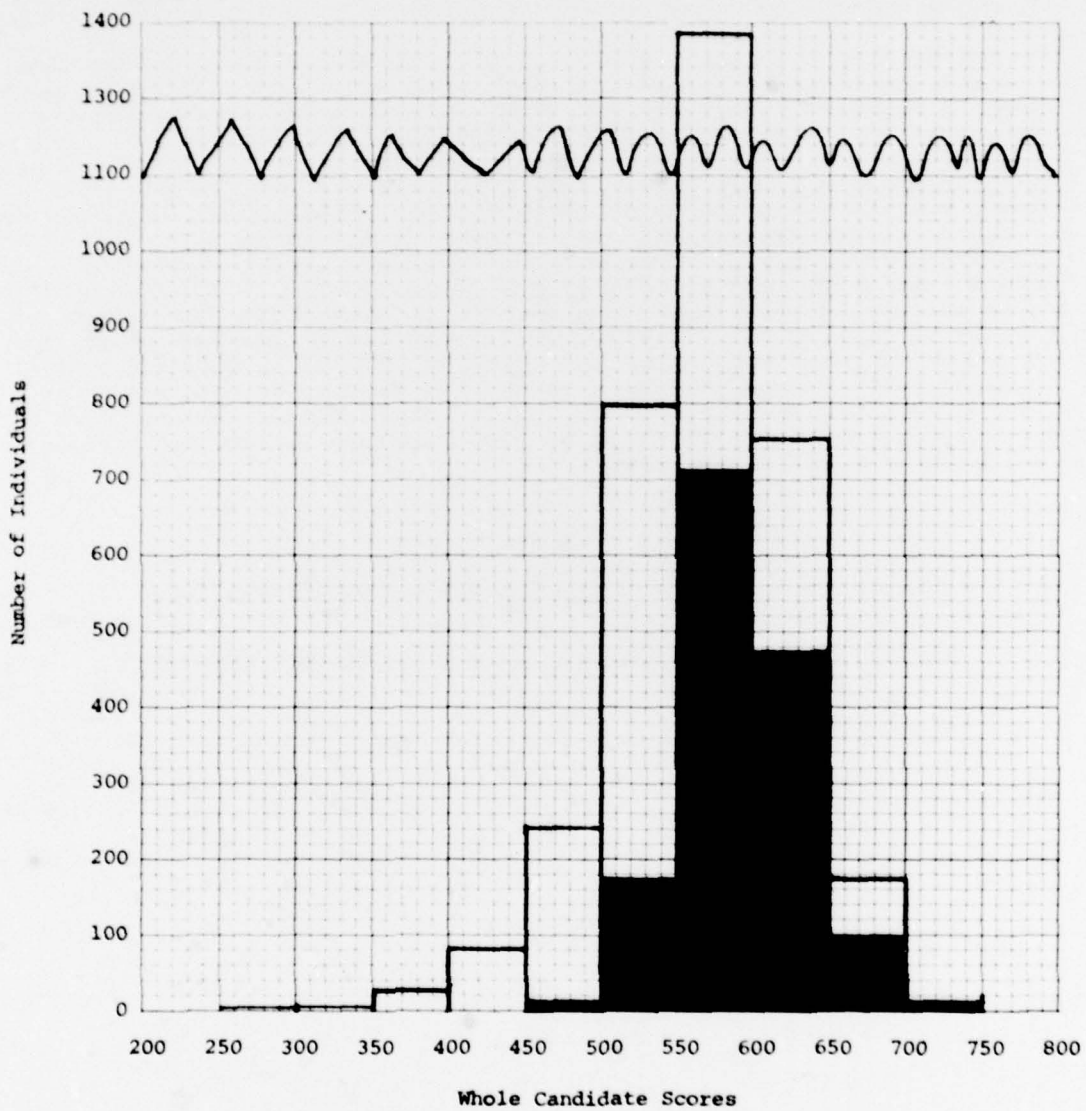
TABLE 2

DISTRIBUTION OF WHOLE CANDIDATE SCORES FOR THE CLASS OF 1981

Score Ranges	No.	%
7500-8000	0	0
7000-7499	8	0.5
6500-6999	95	6.5
6000-6499	474	32.3
5500-5999	714	48.6
5000-5499	170	11.6
4500-4999	8	0.5
4000-4499	0	0
Total	1469	100%
Mean		5927.2
Standard Deviation		363.5

\*The data for the variables shown on these tables come from the Class Characteristics reports and from the Basic Candidate tapes.

		<u>Number</u>	<u>Mean</u>	<u>SD</u>	
Candidates	□	Candidates	3472	567.71	54.43
Cadets	■	Cadets	1469	592.72	36.35



No. Candidates	0	1	2	23	80	242	796	1385	754	176	13	0
% Entered	0	0	0	0	0	3.3	21.4	51.6	62.9	54.0	61.5	0
No. Cadets	0	0	0	0	0	8	170	714	474	95	8	0

FIGURE 4. COMPARISON OF THE NUMBER OF CADETS WITH THE NUMBER OF FULLY EXAMINED CANDIDATES AT EACH WHOLE MAN SCORE LEVEL FOR THE CLASS OF 1981

TABLE 3  
 MEANS AND STANDARD DEVIATIONS FOR CEER, LPS, PAE AND WCS  
 FOR THE CLASSES OF 1972 THROUGH 1981

Class	CEER			LPS			PAE			WCS		
	N	Mean	SD	N	Mean	SD	N	Mean	SD	N	Mean	SD
1972* A	3386	554	76	3382	564	80	3338	519	101	3053	5553	581
T	2657	561	73	2657	573	77	2657	532	94	2657	5620	557
M	2514	561	73	2514	573	77	2514	533	94	2514	5618	558
C	1239	593	54	1239	600	64	1239	561	76	1239	5919	336
1973 A	3869	542	77	3851	563	78	3966	511	106	3518	5476	580
T	3221	548	75	3221	568	77	3221	515	101	3221	5508	596
M	3041	548	75	3041	569	77	3041	518	100	3041	5516	569
C	1439	582	57	1439	595	68	1427	547	81	1427	5829	369
1974 A	6519	531	83	7239	574	70	4706	512	105	6213	5427	582
T	3858	547	78	3735	581	69	3912	514	103	3717	5551	550
M	3147	553	76	3093	586	65	3168	524	96	3088	5606	534
C	1373	589	60	1373	609	59	1366	553	82	1373	5912	353
1975 A	6674	520	88	8041	567	77	4477	505	107	6587	5326	623
T	3832	538	81	3843	573	78	3892	508	105	3797	5461	596
M	3527	540	80	3533	576	78	3568	511	103	3501	5484	589
C	1339	582	59	1339	608	65	1336	546	81	1339	5865	356
1976**A	6213	518	89	6440	568	76	4323	508	110	6440	5303	636
T	2943	541	87	3897	575	75	3924	510	108	3897	5437	601
M	2717	542	83	3593	577	74	3614	514	107	3593	5453	597
C	1094	580	63	1378	609	57	1375	553	84	1378	5837	351
1977**A	6397	515	87	6790	565	83	4734	488	106	6732	5273	639
T	2505	543	80	2496	576	82	2504	502	102	2496	5488	590
M	2341	545	79	2336	578	81	2341	504	102	2336	5508	581
C	941	574	64	1376	613	68	1371	537	78	1376	5812	366

\*A = all candidates tested on variables; T = all candidates fully tested on CEER, LPS, PAE and WCS; M = all candidates fully tested and medically qualified; C = admitted candidates who became cadets.

\*\*ACEER scores for the Classes of 1976 through 1981 are shown in Table 5. The "N" for CEER, for fully tested candidates, fully tested and medically qualified candidates, and for admitted cadets in the Classes of 1976 through 1981 includes only those who were evaluated using CEER.

TABLE 3 (Continued)

MEANS AND STANDARD DEVIATIONS FOR CEER, LPS, PAE AND WCS  
FOR THE CLASSES OF 1972 THROUGH 1981

Class	CEER			LPS			PAE			WCS		
	N	Mean	SD	N	Mean	SD	N	Mean	SD	N	Mean	SD
1978**A	6696	538	92	7117	545	86	5435	498	94	7117	5355	655
T	3264	557	88	4587	555	86	4590	501	91	4577	5502	617
M	3010	558	87	4219	558	86	4227	503	90	4219	5512	613
C	1033	597	69	1435	594	72	1432	541	70	1435	5901	398
1979**A	6779	531	90	7353	550	88	5360	511	98	7353	5338	656
T	2444	574	75	3428	574	83	3446	525	91	3428	5689	500
M	2236	575	75	3128	577	82	3143	529	88	3128	5706	499
C	1039	590	69	1432	603	71	1431	553	75	1432	5901	376
1980**A	8046	535	90	8659	551	88	5909	511	104	8659	5357	647
T	3145	569	80	4255	572	84	4167	518	101	4255	5628	558
M	2875	571	78	3891	575	83	3818	521	101	3891	5651	548
C***	1100	600	64	1485	606	68	1360	555	78	1485	5945	357
1981 A****	5752	536	91	7780	553	88	5425	518	102	7780	5381	652
T	2845	569	77	2828	575	82	2845	533	93	2828	573	551
M	2630	571	76	2618	577	81	2630	536	90	2618	5693	542
C***	1102	592	60	1469	606	68	1361	563	76	1469	5927	363

\*\*ACEER scores for the Classes of 1976 through 1981 are shown in Table 5. The "N" for CEER, for fully tested candidates, fully tested and medically qualified candidates, and for admitted cadets in the Classes of 1976 through 1981 includes only those who were evaluated using CEER.

\*\*\*PAE for admitted cadets in the Classes of 1980 and 1981 are shown for male cadets, so that more valid comparisons can be made with prior years.

\*\*\*\*CEER for all candidates evaluated by use of CEER.

TABLE 4  
 MEANS AND STANDARD DEVIATIONS FOR SAT-V, SAT-M, AND HSR  
 FOR THE CLASSES OF 1972 THROUGH 1981

Class	SAT-V			SAT-M			HSR		
	N	Mean	SD	N	Mean	SD	N	Mean	SD
1972 A*	3808	540	95	3808	601	89	3564	501	118
T**	2657	552	89	2657	614	82	2657	509	115
M	2514	551	89	2514	614	82	2514	508	116
C	1239	579	73	1239	645	61	1239	543	105
1973 A	4394	526	93	4394	591	92	4101	493	117
T	3221	536	89	3221	601	86	3221	501	114
M	3041	536	89	3041	602	86	3041	501	114
C	1439	562	77	1439	635	67	1439	538	102
1974 A	6519	531	83	6339	577	95	7168	492	117
T	3912	533	92	3911	594	89	3858	505	115
M	3168	539	90	3167	601	86	3147	510	113
C	1373	563	80	1372	633	69	1373	552	104
1975 A	6239	506	99	6237	567	99	7470	483	122
T	3877	521	95	3877	581	93	3834	499	120
M	3554	522	94	3554	583	92	3529	502	119
C	1329	554	78	1329	622	70	1339	533	106
1976***A	5539	505	99	5536	564	99	6512	484	120
T	2942	528	94	2942	586	93	2943	499	120
M	2716	529	93	2716	588	92	2717	499	121
C	1094	554	80	1094	624	70	1094	539	109

\*A = all candidates tested on variables; T = all candidates fully tested on CEER, LPS, PAE, and WCS; M = all candidates fully tested and medically qualified; C = admitted candidates who became cadets.

\*\*Number with CEER score may be greater than those with CEER components, as many of the candidates with HSR and Preliminary SAT scores were given an estimated CEER.

\*\*\*The "N" for these variables for fully tested candidates, fully tested and medically qualified candidates, and for admitted cadets in the Classes of 1976 through 1981 includes only those who were evaluated using CEER.

TABLE 4 (Continued)

MEANS AND STANDARD DEVIATIONS FOR SAT-V, SAT-M, AND HSR  
FOR THE CLASSES OF 1972 THROUGH 1981

Class	SAT-V			SAT-M			HSR		
	N	Mean	SD	N	Mean	SD	N	Mean	SD
1977*** A*	5439	498	96	5439	559	98	6796	491	120
T**	2502	522	91	2503	587	94	2505	509	117
M	2338	524	90	2339	590	87	2341	510	116
C	941	545	81	941	619	70	941	541	110
1978*** A	4937	513	101	4937	576	102	7197	503	121
T	3264	531	95	3264	594	95	3264	514	120
M	3010	531	95	3010	595	94	3010	514	120
C	1033	562	80	1033	635	73	1033	552	112
1979*** A	5898	499	95	5897	567	97	7451	502	119
T	2443	538	85	2443	611	80	2444	535	114
M	2235	539	84	2235	612	79	2236	536	115
C	1039	550	81	1039	629	70	1039	550	113
1980*** A	7124	499	96	7121	570	100	8783	512	118
T	3145	531	88	3145	607	88	3145	533	117
M	2875	533	86	2875	609	87	2875	534	116
C	1100	550	78	1100	638	69	1100	565	110
1981****A	5358	502	97	5343	573	99	7935	517	115
T	2845	528	87	2845	606	85	2845	535	114
M	2630	529	86	2630	608	83	2630	535	114
C	1102	548	77	1102	629	66	1102	556	107

\*A = all candidates tested on variables; T = all candidates full tested on CEER, LPS, PAE, and WCS; M = all candidates full tested and medically qualified; C = admitted candidates who became cadets.

\*\*Number with CEER score may be greater than those with CEER components, as many of the candidates with HSR and Preliminary SAT scores were given an estimated CEER.

\*\*\*The "N" for these variables for fully tested candidates, fully tested and medically qualified candidates, and for admitted cadets in the Classes of 1976 through 1981 includes only those who were evaluated using CEER.

\*\*\*\*SAT-V and SAT-M for all candidates evaluated by use of CEER.

TABLE 5  
 MEANS AND STANDARD DEVIATIONS FOR ACEER, ACT-EN, ACT-MA, ACT-NA,  
 AND HSR FOR THE CLASSES OF 1976 THROUGH 1981

Class	ACEER			ACT-EN			ACT-MA			ACT-NA			HSR			
	N	Mean	SD	N	Mean	SD	N	Mean	SD	N	Mean	SD	N	Mean	SD	
1976	A*	1829	508	92	1860	20.2	4.4	1860	25.7	5.6	1859	25.6	5.6	6512	484	120
	T	977	511	81	979	20.2	4.2	979	25.9	5.4	979	25.9	5.2	991	488	111
	M	893	511	80	895	20.1	4.2	895	25.9	5.3	895	25.9	5.2	897	489	112
	C	284	563	50	284	22.0	3.0	284	28.9	3.1	284	28.2	3.7	284	547	98
1977	A	2475	516	86	2572	20.0	4.4	2572	25.2	5.8	2569	25.3	5.6	6796	491	120
	T	1307	532	77	1307	20.5	3.9	1307	26.5	5.2	1307	26.3	4.9	1307	509	110
	M	1204	533	76	1204	20.5	3.9	1204	26.6	5.1	1204	26.4	4.8	1204	510	110
	C	435	569	49	435	21.7	3.2	435	28.7	3.2	435	27.8	3.9	435	553	94
1978	A	2935	532	94	3126	20.4	4.4	3126	25.9	5.5	3112	26.5	5.4	7197	503	121
	T	1324	552	85	1326	21.1	3.9	1326	27.3	4.9	1326	27.4	4.7	1326	521	113
	M	1216	552	85	1217	21.1	3.9	1217	27.3	4.8	1217	27.4	4.6	1217	521	114
	C	402	596	67	402	22.5	3.7	402	29.5	3.5	402	28.8	4.0	402	574	104
1979	A	2997	526	93	3142	20.2	4.3	3142	25.3	5.7	3133	26.6	5.2	7451	502	119
	T	1002	572	67	1002	21.7	3.5	1002	28.1	3.8	1002	28.3	4.0	1002	551	102
	M	907	573	67	907	21.7	3.4	907	28.1	3.8	907	28.3	4.0	907	552	101
	C	394	590	58	394	22.2	3.3	394	28.9	3.2	394	28.6	3.9	394	575	95
1980	A	3680	527	91	4056	20.5	4.4	4056	25.0	5.6	4037	26.5	5.2	8783	512	118
	T	1129	561	77	1129	21.6	3.8	1129	27.2	4.5	1129	28.0	4.4	1129	547	109
	M	1030	564	77	1030	21.7	3.7	1030	27.3	4.5	1030	28.1	4.2	1030	551	109
	C	385	596	55	385	22.6	3.2	385	28.7	3.0	385	29.2	3.4	385	593	99
1981	A**	2182	540	85	2182	21.0	4.1	2182	25.9	5.0	2162	27.2	4.9	2183	531	108
	T	646	571	66	645	21.9	3.4	645	27.9	3.6	645	28.6	3.8	646	550	105
	M	596	573	65	595	21.9	3.4	595	28.0	3.6	595	28.6	3.7	596	552	106
	C	367	590	52	367	22.4	3.3	367	28.4	2.9	367	29.0	3.4	367	583	101

\*A = all candidates tested on variables; T = all candidates fully tested and evaluated using ACEER; M = all candidates fully tested, medically qualified and evaluated using ACEER; C = admitted cadets using ACEER.

\*\*All candidates evaluated using ACEER.

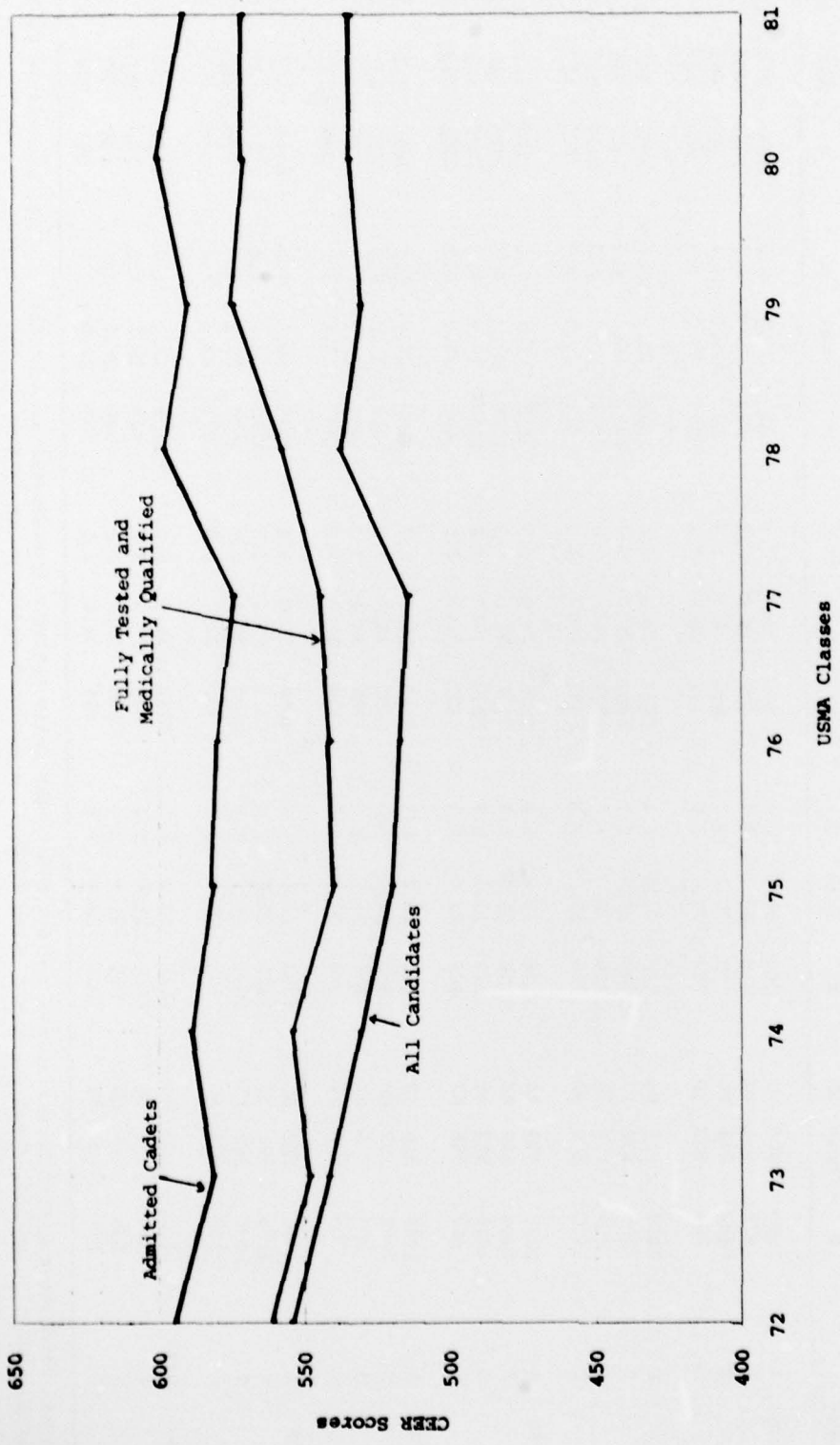


FIGURE 5. TRENDS OF MEAN CEER SCORES FOR THE CANDIDATES AND ENTERING CADETS OF THE CLASSES OF 1972 THROUGH 1981

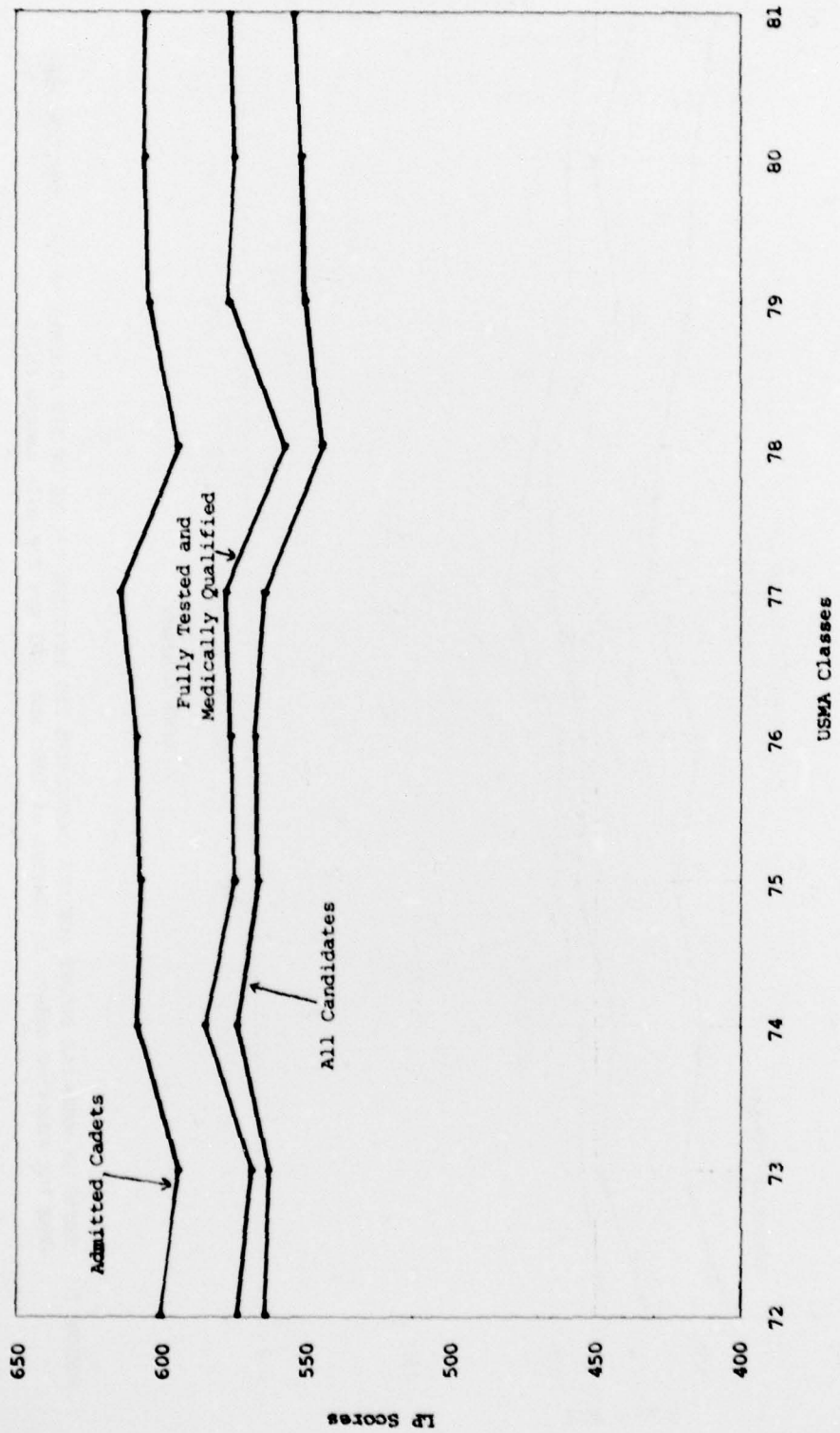


FIGURE 6. TRENDS OF MEAN LEADERSHIP POTENTIAL SCORES FOR THE CANDIDATES AND ENTERING CADETS OF THE CLASSES OF 1972 THROUGH 1981

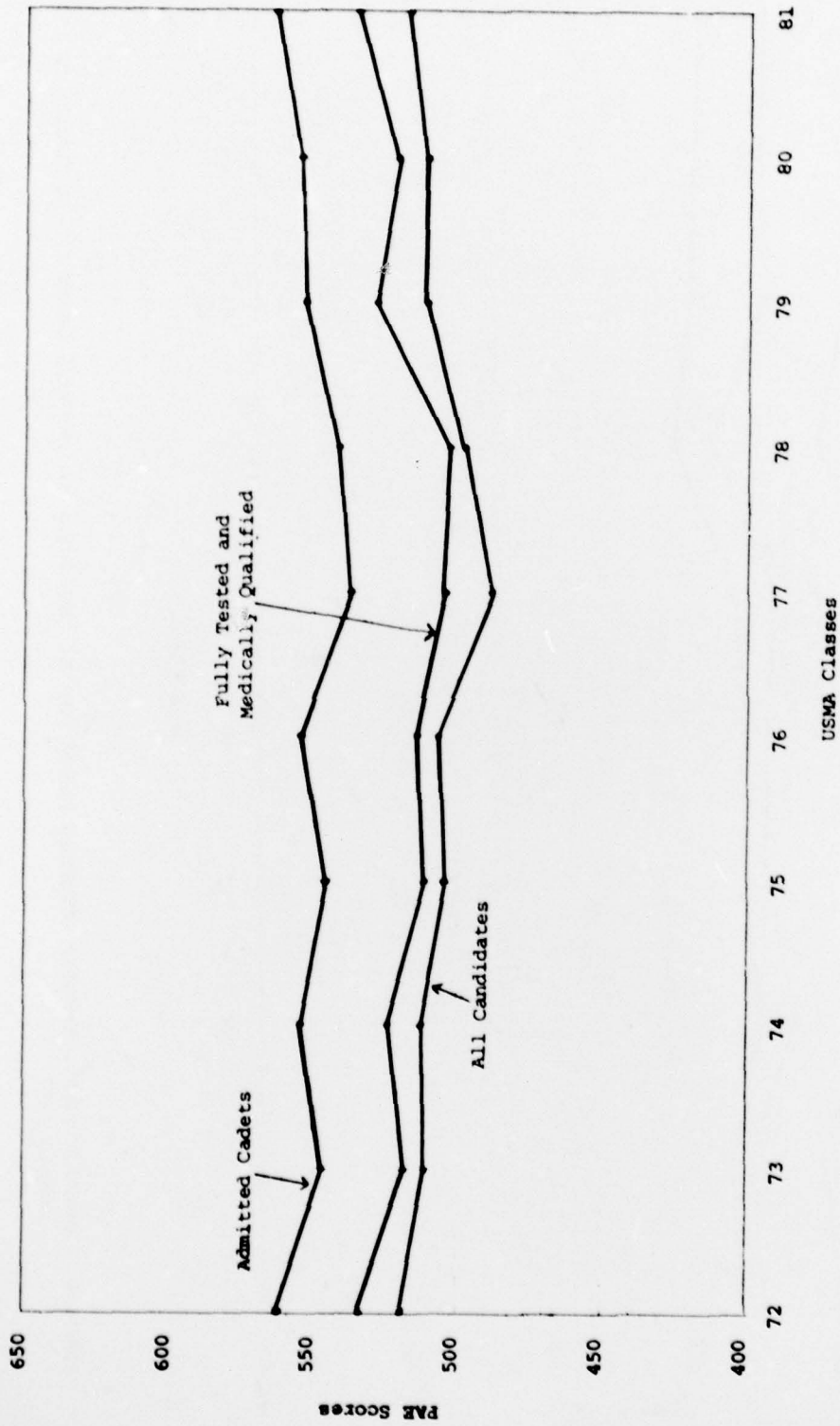


FIGURE 7. TRENDS OF MEAN PAF SCORES FOR THE CANDIDATES AND ENTERING CADETS OF THE CLASSES OF 1972 THROUGH 1981  
(PAF for admitted cadets in Classes of 1980 and 1981 are for male cadets only)

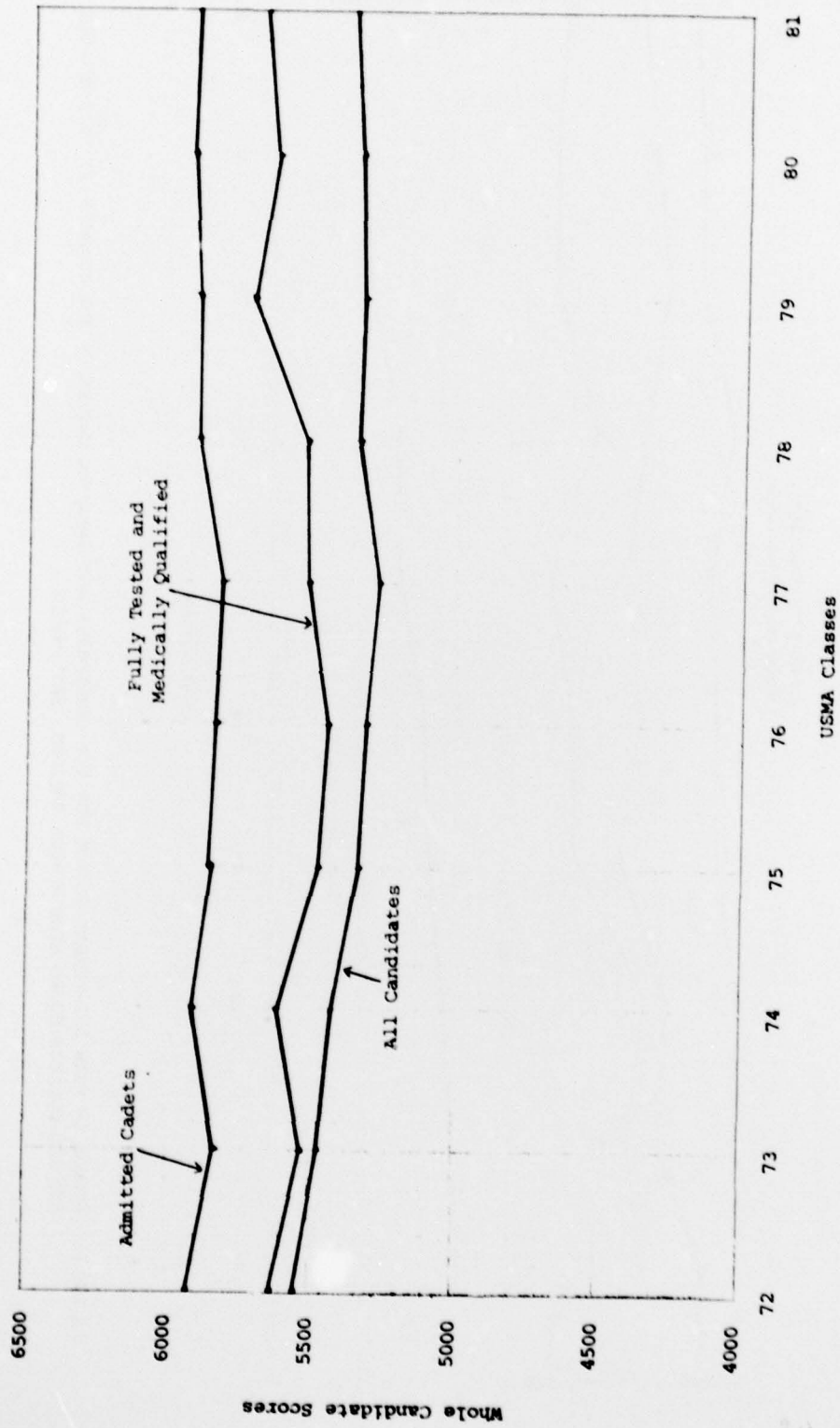


FIGURE 8. TRENDS OF MEAN WHOLE CANDIDATE SCORES FOR THE CANDIDATES AND ENTERING CADETS OF THE CLASSES OF 1972 THROUGH 1981

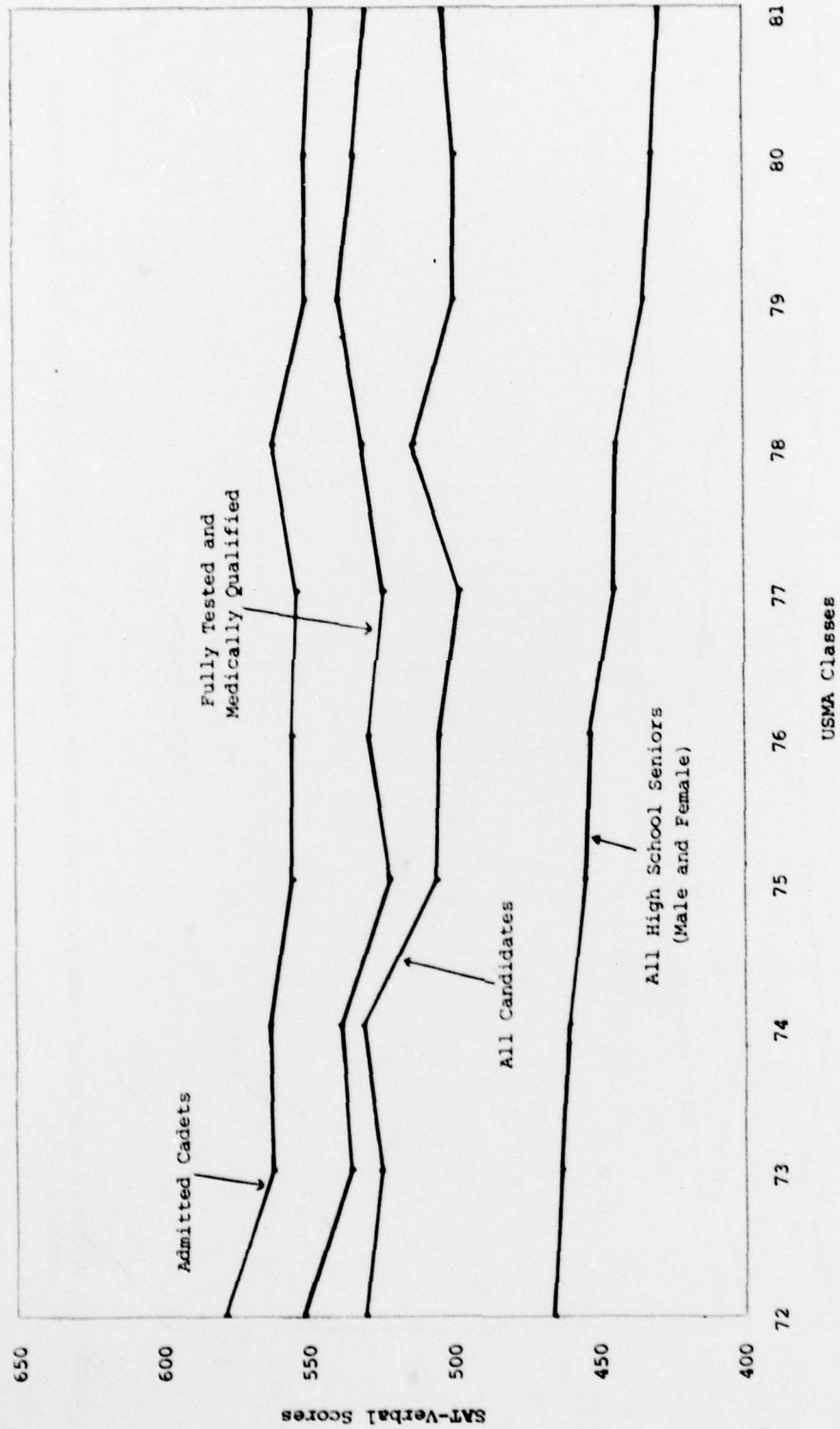


FIGURE 9. TRENDS IN MEAN SAT-VERBAL SCORES FOR THE CANDIDATES AND ENTERING CADETS OF THE CLASSES OF 1972 THROUGH 1981 AND ALL COLLEGE-BOUND HIGH SCHOOL SENIORS, NATIONWIDE

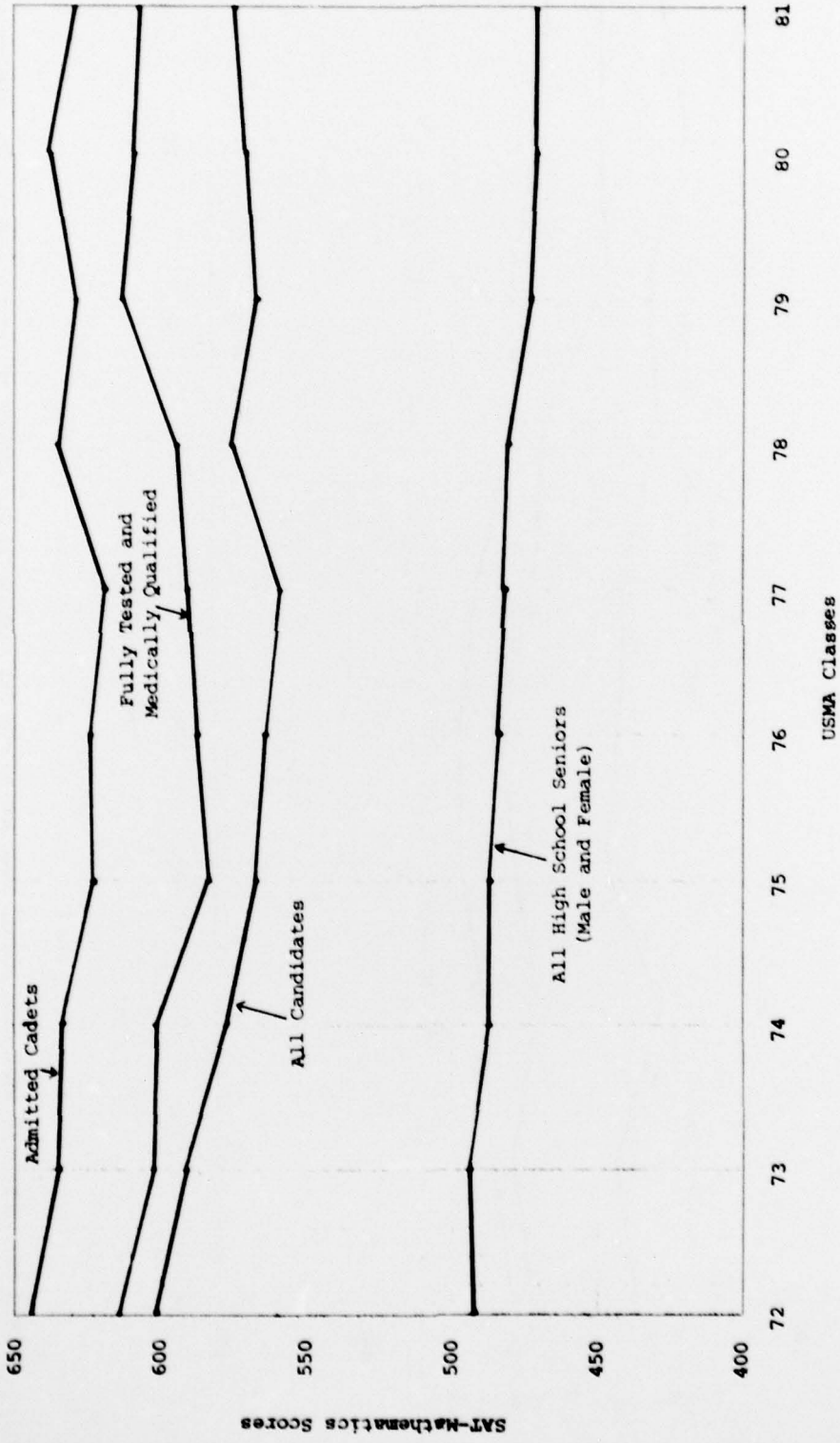


FIGURE 10. TRENDS OF MEAN SAT-MATHEMATICS SCORES FOR CANDIDATES AND ENTERING CADETS OF THE CLASSES OF 1972 THROUGH 1981 AND ALL COLLEGE-BOUND HIGH SCHOOL SENIORS, NATIONWIDE

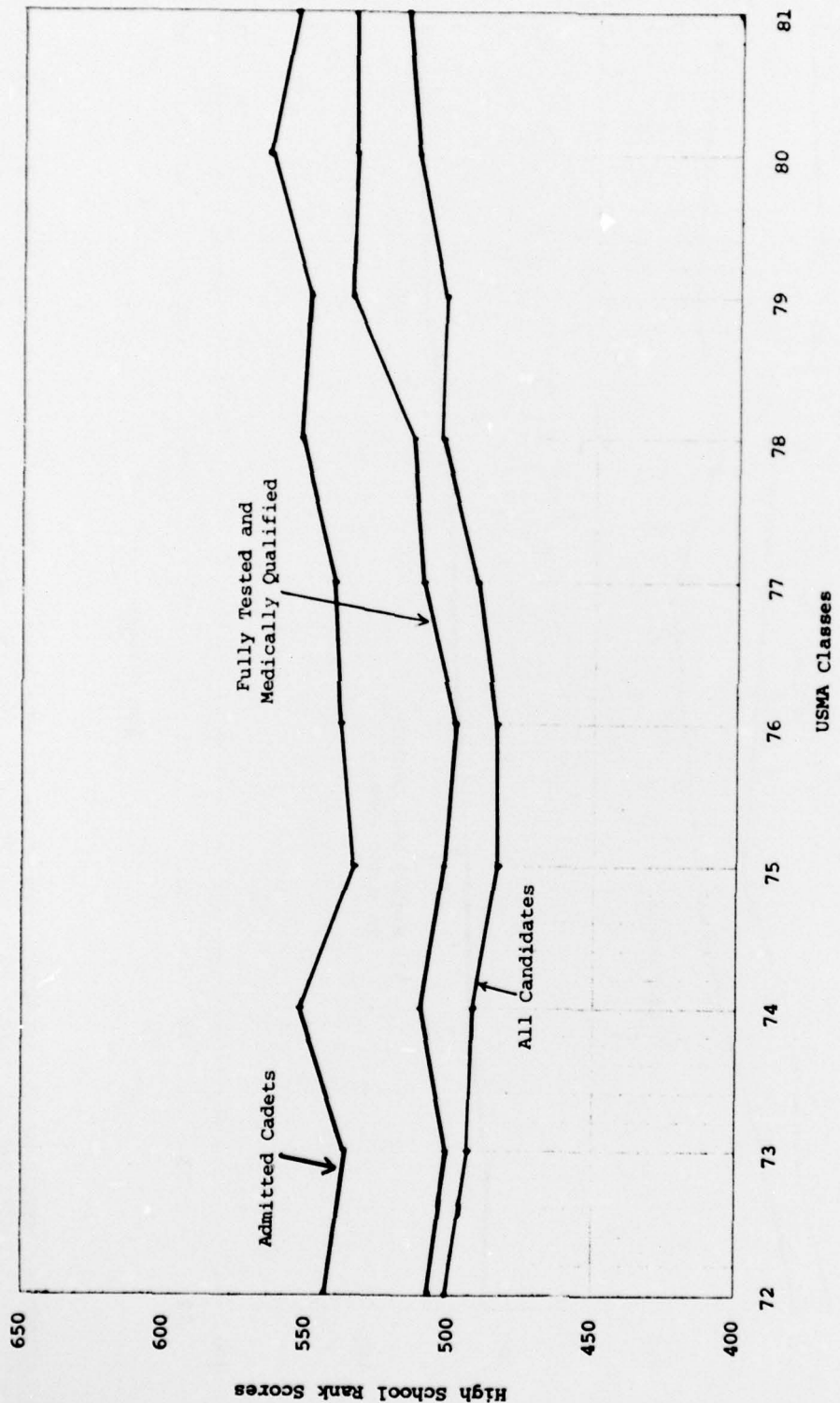


FIGURE 11. TRENDS OF MEAN HIGH SCHOOL RANK SCORES FOR THE CANDIDATES AND CADETS OF THE CLASSES OF 1972 THROUGH 1981

#### SUMMARY

Over the ten year period, from the entrance of the Class of '72 to the Class of '81, admission variables for the admitted classes show the following trends:

a. CEER scores show a gradual decrease to the Class of '73, a fairly stable level to the Class of '76, a sharp increase for the Class of '78, and another stable level through the Class of '81, which leaves the scores well above the Classes of '76 and '77.

b. SAT-Verbal and SAT-Math scores show a similar pattern, with the Class of '81 having lower scores than the Class of '78 but higher scores than the Class of '77.

c. The Whole Candidate Scores declined through the Class of '77, and then there was an increase for the Classes of '78 through '81.

d. The Leadership Potential Score has been relatively constant over the 10-year period.

e. The High School Rank score has been fairly constant for the last six years but shows a significant increase for the Class of '80 and a slight drop for the Class of '81.

TABLE 6

## SELECTED CHARACTERISTICS OF THE ENTERING CADETS TO THE CLASSES OF 1973 THROUGH 1981

	CLASS								
	1973	1974	1975	1976	1977	1978	1979	1980	1981
Cadets with 1 or More Semesters of College	184 (12.8%)	154 (11.3%)	191 (14.3%)*	194 (14.1%)*	201 (14.6%)*	195 (13.6%)	217 (15.5%)*	225 (15.2%)*	263 (17.9%)*
Sons or Daughters of Alumni of USMA	67 (4.7%)	71 (5.2%)	66 (4.9%)	59 (4.3%)	64 (4.7%)	50 (3.5%)	64 (4.5%)	59 (4.0%)	62 (4.2%)
Attended USMA Preparatory School	130 (9.0%)	188 (13.7%)	147 (11.0%)	156 (11.3%)	194 (14.1%)	187 (13.0%)	211 (14.7%)	179 (12.1%)	162 (11.0%)
Attended Public High School	1212 (84.3%)	1171 (85.3%)	1122 (83.8%)	1171 (85.0%)	1129 (82.0%)	1216 (84.8%)	1231 (85.9%)	1283 (86.4%)	1259 (85.7%)
Attended Private High School	226 (15.7%)	202 (14.7%)	215 (16.1%)	206 (15.0%)	247 (18.0%)	219 (15.2%)	202 (14.1%)	198 (13.4%)	208 (14.2%)
Rank in High School Class									
Top Fifth	1066 (74.1%)	1057 (76.9%)	947 (70.7%)	966 (70.1%)	928 (67.4%)	1019 (71.0%)	1011 (70.6%)	1116 (75.2%)	1070 (72.9%)
Second Fifth	264 (18.4%)	229 (16.7%)	280 (20.9%)	297 (21.6%)	317 (23.0%)	290 (20.2%)	310 (21.6%)	260 (17.5%)	287 (19.5%)
Third Fifth	92 (6.4%)	75 (5.5%)	96 (7.2%)	98 (7.1%)	106 (7.7%)	99 (6.9%)	90 (6.3%)	90 (6.0%)	95 (6.5%)
Fourth Fifth	12 (0.8%)	8 (0.6%)	10 (0.8%)	14 (1.0%)	21 (1.5%)	20 (1.4%)	15 (1.1%)	12 (0.8%)	13 (0.9%)
Bottom Fifth	4 (0.3%)	3 (0.2%)	4 (0.3%)	2 (0.2%)	2 (0.2%)	5 (0.4%)	2 (0.1%)	3 (0.2%)	2 (0.1%)
Valedictorians	53 (3.7%)	56 (4.1%)	68 (5.1%)	65 (4.7%)	59 (4.3%)	81 (5.6%)	86 (6.0%)	83 (5.6%)	90 (6.1%)
Salutatorians	56 (3.9%)	57 (4.2%)	40 (3.0%)	32 (2.3%)	53 (3.9%)	56 (3.9%)	58 (4.0%)	58 (3.9%)	66 (4.5%)
N =	1438	1373	1339	1378	1376	1435	1433	1485	1469

\*In 1975 through 1981 indicates one or more months of college.

TABLE 7

## SELECTED HIGH SCHOOL ACTIVITIES AND AWARDS OF THE ENTERING CADETS TO THE CLASSES OF 1973 THROUGH 1981

	CLASS									
	1973	1974	1975	1976	1977	1978	1979	1980	1981	
Senior Class President	84 (5.8%)	64 (4.7%)	69 (5.2%)	55 (4.0%)	67 (4.9%)	68 (4.7%)	95 (6.6%)	86 (5.8%)	91 (6.2%)	
Senior Class Officer	137 (9.5%)	175 (12.8%)	117 (8.7%)	110 (8.0%)	184 (13.4%)	167 (11.6%)	163 (11.4%)	184 (12.4%)	192 (13.1%)	
Student Body President	75 (5.2%)	102 (7.4%)	57 (4.3%)	60 (4.4%)	62 (4.5%)	62 (4.3%)	66 (4.6%)	73 (4.9%)	97 (6.6%)	
School Club President	439 (30.5%)	435 (31.7%)	600 (44.8%)*	701 (50.9%)*	713 (51.8%)*	648 (45.2%)*	686 (47.8%)*	715 (48.1%)*	739 (50.3%)*	
Debate Team	173 (12.0%)	160 (11.7%)	144 (10.8%)	111 (8.1%)	139 (10.1%)	135 (9.4%)	127 (8.9%)	147 (9.9%)	163 (11.1%)	
Varsity Lettermen	1068 (74.3%)	1070 (77.9%)	1029 (76.9%)	1112 (80.7%)	1079 (78.4%)	1137 (79.2%)	1138 (79.3%)	1199 (80.7%)	1219 (82.9%)	
Team Captains	480 (33.4%)	466 (33.9%)	416 (31.1%)	466 (33.8%)	458 (33.3%)	499 (34.8%)	529 (36.9%)	562 (37.8%)	654 (44.5%)	
All Conference	391 (27.3%)	325 (23.7%)	363 (27.1%)	473 (34.3%)	438 (31.8%)	452 (31.5%)	528 (36.8%)	523 (35.2%)	529 (36.0%)	
Scouts, All	829 (57.6%)	776 (56.5%)	748 (55.9%)	757 (54.9%)	794 (57.7%)	723 (50.4%)	756 (52.7%)	790 (53.2%)	804 (54.7%)	
Scouts, Eagle	184 (12.8%)	176 (12.8%)	205 (15.3%)	204 (14.8%)	190 (13.8%)	184 (12.8%)	206 (14.4%)	185 (12.5%)	209 (14.2%)	
Boys/Girls State Representative	331 (23.0%)	373 (27.2%)	261 (19.5%)	270 (19.6%)	293 (21.3%)	302 (21.0%)	346 (24.1%)	311 (20.9%)	315 (21.4%)	
High School Dramatic Club	187 (13.0%)	193 (14.1%)	189 (14.1%)	169 (12.3%)	151 (11.0%)	153 (10.7%)	165 (11.5%)	173 (11.6%)	209 (14.2%)	
Bausch & Lomb Science Award	26 (1.8%)	20 (1.5%)	29 (2.2%)	26 (1.9%)	25 (1.8%)	31 (2.2%)	39 (2.7%)	38 (2.6%)	38 (2.6%)	
American Legion Award	104 (7.2%)	128 (9.3%)	108 (8.1%)	120 (8.7%)	128 (9.3%)	112 (7.8%)	131 (9.1%)	120 (8.1%)	145 (9.9%)	

\*President or Vice President.

UNCLASSIFIED

SECURITY CLASSIFICATION OF THIS PAGE (When Data Entered)

REPORT DOCUMENTATION PAGE		READ INSTRUCTIONS BEFORE COMPLETING FORM
1. REPORT NUMBER 14 981.01-78-008	2. GOVT ACCESSION NO.	3. RECIPIENT'S CATALOG NUMBER
4. TITLE (and Subtitle) 6 TRENDS IN ADMISSION VARIABLES THROUGH THE CLASS OF 1981		5. TYPE OF REPORT & PERIOD COVERED
7. AUTHOR(s) 10 John W. Houston		6. PERFORMING ORG. REPORT NUMBER
9. PERFORMING ORGANIZATION NAME AND ADDRESS Office of the Director of Institutional Research United States Military Academy West Point, New York 10996		8. CONTRACT OR GRANT NUMBER(s)
11. CONTROLLING OFFICE NAME AND ADDRESS Same as #9 above	11	10. PROGRAM ELEMENT, PROJECT, TASK AREA & WORK UNIT NUMBERS Project No. 262
14. MONITORING AGENCY NAME & ADDRESS (if different from Controlling Office) United States Military Academy West Point, New York 10996	12. REPORT DATE January 1978	13. NUMBER OF PAGES 24 + ii
	15. SECURITY CLASS. (of this report) Unclassified	15a. DECLASSIFICATION/DOWNGRADING SCHEDULE
16. DISTRIBUTION STATEMENT (of this Report) Reproduction of this document in whole or in part must have prior approval of the Superintendent, United States Military Academy, West Point, New York.		
17. DISTRIBUTION STATEMENT (of the abstract entered in Block 20, if different from Report)		
18. SUPPLEMENTARY NOTES		
19. KEY WORDS (Continue on reverse side if necessary and identify by block number) Admission Analysis Characteristics Class of 1981 Freshmen		
20. ABSTRACT (Continue on reverse side if necessary and identify by block number) The United States Military Academy uses the Whole Candidate concept in the selection of candidates for admission. This concept encompasses three broad areas: scholastic, leadership potential, and physical condition and aptitude. The entrance scores for each of these areas are compared with previous classes. The American College Testing Program scores were used to admit 367 cadets to the Class of 1981. These scores are included and are shown with the previous five years in which the ACT scores were used. The College Board scores and other admission variables are shown for a ten year period. The PAE scores for the Class of 1981 are shown for male and female cadets separately, since the PAE scale for females is not the same as the scale for males.		

DD FORM 1 JAN 73 1473 EDITION OF 1 NOV 65 IS OBSOLETE

UNCLASSIFIED  
SECURITY CLASSIFICATION OF THIS PAGE (When Data Entered)