

AD-A077 827 MILITARY ACADEMY WEST POINT NY OFFICE OF THE DIRECTO--ETC F/G 5/10
TRENDS IN ADMISSION VARIABLES THROUGH THE CLASS OF 1982 (U)
OCT 78 J W HOUSTON

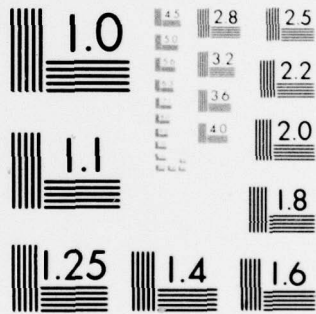
UNCLASSIFIED 79-001

NL

| OF |
AD
A077827



END
DATE
FILMED
1-80
DDC



MICROCOPY RESOLUTION TEST CHART
NATIONAL BUREAU OF STANDARDS-1963-A

LEVEL II

(1)

79-001

AD A 077827



UNITED STATES MILITARY ACADEMY

WEST POINT, NEW YORK

See 1473 in books

TRENDS IN ADMISSION VARIABLES THROUGH THE CLASS OF 1982

DDC FILE COPY

DISTRIBUTION STATEMENT A
Approved for public release;
Distribution Unlimited

DDC
RECEIVED
DEC 10 1979
A

OFFICE OF THE
DIRECTOR OF INSTITUTIONAL RESEARCH
OCTOBER 1978

DUTY-HONOR-COUNTRY

79 20 9 230

TRENDS IN ADMISSION VARIABLES THROUGH THE CLASS OF 1982

Report No. 79-001
Project No. 286
Prepared by: Mr. John W. Houston
Programmer: Mrs. Jackie Pittard
Typist: Miss Shirley Sabel
October 1978

ABSTRACT

The United States Military Academy uses the Whole Candidate concept in the selection of candidates for admission. This concept encompasses three broad areas: scholastic, leadership potential, and physical condition and aptitude. This report compares the entrance scores for each of these areas with previous classes. The College Board scores and other admission variables are shown for a ten year period. The PAE scores for the Class of 1982 are shown for male and female cadets separately, since the PAE scale for females is not the same as the scale for males.

NOTE: Any conclusions in this report are not to be construed as official U.S. Military Academy or Department of the Army positions unless so designated by other authorized documents.

DISTRIBUTION: This document is prepared for official purposes only. Its contents may not be reproduced or distributed (in whole or in part) without specific permission of the Superintendent, U.S. Military Academy, in each instance.

Accession For	
NTIS GRA&I	<input checked="" type="checkbox"/>
DDC TAB	<input type="checkbox"/>
Unannounced	<input type="checkbox"/>
Justification	
By _____	
Distribution/	
Availability Codes	
Dist	Avail and/or special
A	

OFFICE OF
THE DIRECTOR OF INSTITUTIONAL RESEARCH
UNITED STATES MILITARY ACADEMY
WEST POINT, NEW YORK 10996

DISTRIBUTION STATEMENT A
Approved for public release,
Distribution Unlimited

Index to Tables

Table	Page Number	Title
1	5	Selected High School Activities and Awards of Cadets--Classes of 1974-1982.
1a	6	Selected characteristics of Cadets--Classes of 1974-1982.
2	7	Comparison of number of Cadets and Candidates at each CEER score level--Class of 1982.
3	8	Distribution of scores on Whole Candidates score components--Class of 1982.
4	9	Comparison of number of Cadets and Candidates at each ACEER score level--Class of 1982.
5	10	Comparison of number of Cadets and Candidates at each LPS level--Class of 1982.
6	11	Comparison of number of Cadets and Candidates at each Whole Candidate Score level--Class of 1982.
7	12	Mean and standard deviations for all admission variables for Candidates and Cadets--Class of 1982.
8	13	Trends of CEER Scores for Candidates and Cadets--Classes of 1973-1982.
9	14	Trends of Leadership Potential Scores for Candidates and Cadets--Classes of 1973-1982.
10	15	Trends of Physical Aptitude Exam Scores for Candidates and Cadets--Classes of 1973-1982.
11	16	Trends of Whole Candidate Scores for Candidates and Cadets--Classes of 1973-1982.
12	17	Trends of Sat-Verbal Scores for Candidates and Cadets--Classes of 1973-1982.
13	18	Trends of Sat-Math Scores for Candidates and Cadets--Classes of 1973-1982.
14	19	Trends of High School Rank Scores for Candidates and Cadets--Classes of 1973-1982.

Executive Summary

I. PURPOSE. This report contains information, for rapid reference, comparing the pre-college performance of members of the Class of 1982 to previous classes in the area of academics, extracurricular activities, physical performance and athletic participation.

II. METHODOLOGY. Data displayed in this report were obtained from the following sources:

- A. Academic Performance: High School Transcripts, American College Tests and College Entrance Board Tests.
- B. Physical Performance: Physical Aptitude Test.
- C. Extracurricular and Athletic: Self-reported by cadets on questionnaires administered during Cadet Basic Training.
- D. Leadership Potential: An index developed from combining extracurricular and athletic activities with high school faculty evaluation.

III. RESULTS.

- A. The mean Sat-Verbal score for cadets in the Class of 1982 (560) is only three points lower than the highest mean score of the last ten years.
- B. The mean Sat-Math score for cadets in the Class of 1982 (637), is the second highest mean score of the last ten years.
- C. The mean whole candidate score for cadets in the Class of 1982 (5960), is the highest mean score of the last ten years.

IV. CONCLUSIONS.

- A. Academic Qualifications: The academic qualifications of cadets have remained the same or in some cases improved while the mean College Board scores of all College Bound High School Seniors has shown a steady decline over the past ten years.
- B. Physical Qualifications and Extracurricular Activities: While a trend has not yet been established for women, the physical aptitude exam scores of male cadets have shown a slight rise over the last five years. Eighty-three percent of the cadets in the Class of '82 earned High School varsity letters, the highest percentage for the last nine years, indicating a high interest in athletics.
- C. Overall Qualifications: The Class of 1982 has the highest mean whole candidate score of any class for the last ten years indicating that the Military Academy is continuing to attract outstanding candidates.

V. RECOMMENDATIONS. None offered.

I. INTRODUCTION

A. Background

1. This report, along with the report, Characteristics of the Class of 1982 (August 1978) and the report, New Cadets and Other College Freshmen, Class of 1982 (due Spring, 1979) comprise the three general reports prepared by the Office of Institutional Research to describe the Class of 1982 at the time the class entered the Military Academy.
2. The same reports were prepared for the Classes of 1971 through 1981 and similar reports are planned for each future class when it enters the Military Academy.

B. Purpose

This report contains information comparing the pre-college performance of members of the Class of 1982 to previous classes in the areas of academics, extracurricular activities, physical performance and athletic participation.

II. METHODOLOGY

A. Data Collection

Data displayed in this report were obtained from the following sources:

1. Academic performance: High School Transcripts, American College Tests and College Entrance Board Tests.
2. Physical performance: Physical Aptitude Test.
3. Extracurricular and Athletic: Self-reported by cadets on questionnaires administered during Cadet Basic Training.
4. Leadership Potential: An index developed from combining extracurricular and athletic activities with high school faculty evaluations.

B. Definitions

1. CEER College Entrance Examination Board scores and High School Rank scores combined statistically.
2. HSR High School Rank Score.
3. LPS Leadership Potential Score.
4. PAE Physical Aptitude Examination
5. SAT-V Scholastic Aptitude Test - Verbal
6. SAT-M Scholastic Aptitude Test - Mathematics
7. WCS Whole Candidate Score. A combination of CEER (or ACEER), LPS and PAE.
8. ACT-EN American College Test - English
9. ACT-MA American College Test - Mathematics
10. ACT-NA American College Test - Natural Science
11. ACEER A composite score of ACT tests and HSR (similar to CEER).

III. RESULTS

A. Academic Characteristics

1. The mean College Entrance Examination Board and American College test scores for the Classes of 1978 through 1982 for admitted cadets are:

	'82	'81	'80	'79	'78
SAT-V	560	548	550	550	562
SAT-M	637	629	638	629	635
ACT-EN	23.2	22.4	22.6	22.2	22.5
ACT-MA	29.0	28.4	28.7	28.9	29.5
ACT-NS	29.0	29.0	29.2	28.6	28.8
HSR	569	563	572	557	558

2. The Class of 1982 as with previous classes, is academically better qualified than the national norm of high school seniors.

TEST	National Mean Score Percentile
SAT-V	86%
SAT-M	91%
ACT-EN	86%
ACT-MA	94%
ACT-NS	86%

3. The mean scores of the Scholastic Aptitude Test of all college-bound high school seniors, nationwide, has shown a steady decline over the past thirteen years.

	SAT-V		SAT-M	
	1965	1978	1965	1978
USMA	569	560	637	637
Nationwide	473	429	496	468

B. Extracurricular/Athletic Characteristics

1. The Class of 1982 displays a diversity of involvement in extracurricular and athletic activities similar to previous classes. Over 25 percent of the Class of 1982 held an elective high school class office; over 80 percent earned varsity letters and 43 percent were team captains. Over 50 percent were scouts, 11 percent making the rank of Eagle Scout. Twenty percent were Boys/Girls State Representatives.

2. A comparison of the Class of 1982 extracurricular/athletic characteristics with previous USMA class characteristics is displayed at Tables 1 and 1a.

C. Potential for Success at USMA.

Selection for admission is based on ability in three areas: academic aptitude, physical aptitude, and leadership potential.

1. Each candidate is evaluated either on his College Board scores (CEER) or his American College Test program scores (ACEER). If

he has both, the higher of the two is used. Table 2 provides a graphic comparison of the number of cadets within each CEER range as shown in Table 3, with the number of completely examined candidates within the same ranges. Table 4 shows a similar comparison of candidates and cadets evaluated using ACEER scores.

2. General Potential for Physical Activities. The average Physical Aptitude Examination score of 560 for men in the USMA Class of 1982 is only three points lower than the score of 563 for the Class of 1981. The women in the Class of 1982 had a mean PAE score of 517. The distribution of these scores is shown in Table 3.

3. Leadership Potential. The Leadership Potential Scores are derived from the ratings of the candidate by his secondary school teachers and evaluations by admissions officials of his quality of participation in athletic and other school and community activities. The mean LPS for this class (602) is within four points of the mean of Classes for the past three years. A graphic comparison of the distribution of Leadership Potential Scores in this Class with that in the candidate populations is provided in Table 5.

4. The Whole Candidate Score (WCS).
 a. The Whole Candidate Score is a weighted score consisting of 60 percent CEER (or ACEER), 10 percent PAE, and 30 percent LPS. The distribution of the WCS for the Class of 1982 is shown below:

<u>Score Range</u>	<u>Frequency</u>	<u>Percent</u>
7500-8000	0	0
7000-7499	4	0.3
6500-6999	98	7.0
6000-6499	514	36.9
5500-5999	616	44.2
5000-5499	154	11.0
4500-4999	8	.6
Below 4500	0	.0

1394

Mean = 5960 Standard deviation = 373

b. A graphic comparison of the number of cadets whose scores fall in each WCS range figure with the number of candidates whose scores fall within the same ranges is shown in Table 6.

c. A numerical comparison of scores for the components of the WCS, Class of 1982, are shown at Table 7. The Table compares mean scores for evaluated, qualified, and admitted candidates to the Class of 1982.

D. Trends in Admissions Variables

Tables 8-14 show trend data for the classes of 1973 through 1982. These data show that academic scores dropped off somewhat to the Class of 1977 and, after a sharp rise for the Class of 1978, have remained fairly constant. Other trends reflect the following tendencies:

1. SAT-V and SAT-M scores show a similar pattern, with the Class of 1982 having the second highest scores of the past 10 years.
2. The WCS declined through the Class of 1977, increasing for the Class of 1978 through the Class of 1982.
3. The LPS has remained constant.
4. The HSR has been fairly constant for the last seven years, with an increase for the Class of '82.

IV. CONCLUSIONS

1. Academic Qualifications: The academic qualifications of cadets have remained the same, or in some cases improved. While the mean College Board scores of all College Bound High School Seniors has shown a steady decline over the past ten years.
2. Physical Qualifications and Extracurricular Activities: While a trend has not yet been established for women, the physical aptitude exam scores of male cadets have shown a slight rise over the past five years. Eighty-three percent of the cadets in the Class of '82 earned high school varsity letters, the highest percentage for the past nine years, indicating a high interest in athletics.
3. Overall Qualifications: The Class of 1982 has the highest mean whole candidate score of any class for the last ten years (table 11) indicating that the Military Academy is continuing to attract outstanding candidates.

TABLE 1

SELECTED HIGH SCHOOL ACTIVITIES AND AWARDS OF THE ENTERING CADETS TO THE CLASSES OF 1974 THROUGH 1982

	CLASS									
	1974	1975	1976	1977	1978	1979	1980	1981	1982	
Senior Class President	64 (4.7%)	69 (5.2%)	55 (4.0%)	67 (4.9%)	68 (4.7%)	95 (6.6%)	86 (5.8%)	91 (6.2%)	65 (4.7%)	
Senior Class Officer	175 (12.8%)	117 (8.7%)	110 (8.0%)	184 (13.4%)	167 (11.6%)	163 (11.4%)	184 (12.4%)	192 (13.1%)	177 (12.8%)	
Student Body President	102 (7.4%)	57 (4.3%)	60 (4.4%)	62 (4.5%)	62 (4.3%)	66 (4.6%)	73 (4.9%)	97 (6.6%)	73 (5.3%)	
School Club President	435 (31.7%)	600 (44.8%)*	701 (50.9%)*	713 (51.8%)*	648 (45.2%)*	686 (47.8%)*	715 (48.1%)*	739 (50.3%)*	660 (47.0%)*	
Debate Team	160 (11.7%)	144 (10.8%)	111 (8.1%)	139 (10.1%)	135 (9.4%)	127 (8.9%)	147 (9.9%)	163 (11.1%)	160 (11.5%)	
Varsity Lettermen	1070 (77.9%)	1029 (76.9%)	1112 (80.7%)	1079 (78.4%)	1137 (79.2%)	1138 (79.3%)	1199 (80.7%)	1219 (82.9%)	1161 (83.2%)	
Team Captains	466 (33.9%)	416 (31.1%)	466 (33.8%)	458 (33.3%)	499 (34.8%)	529 (36.9%)	562 (37.8%)	654 (44.5%)	599 (42.9%)	
All Conference	325 (23.7%)	363 (27.1%)	473 (34.3%)	438 (31.8%)	452 (31.5%)	528 (36.8%)	523 (35.2%)	529 (36.0%)	527 (37.8%)	
Scouts, All	776 (56.5%)	748 (55.9%)	757 (54.9%)	794 (57.7%)	723 (50.4%)	756 (52.7%)	790 (53.2%)	804 (54.7%)	748 (53.6%)	
Scouts, Eagle	176 (12.8%)	205 (15.3%)	204 (14.8%)	190 (13.8%)	184 (12.8%)	206 (14.4%)	185 (12.5%)	209 (14.2%)	142 (11.2%)	
Boys/Girls State Representative	373 (27.2%)	261 (19.5%)	270 (19.6%)	293 (21.3%)	302 (21.0%)	346 (24.1%)	311 (20.9%)	315 (21.4%)	275 (19.8%)	
High School Dramatic Club	193 (14.1%)	189 (14.1%)	169 (12.3%)	151 (11.0%)	153 (10.7%)	165 (11.5%)	173 (11.6%)	209 (14.2%)	215 (15.5%)	
Bausch & Lomb Science Award	20 (1.5%)	29 (2.2%)	26 (1.9%)	25 (1.8%)	31 (2.2%)	39 (2.7%)	38 (2.6%)	38 (2.6%)	30 (2.2%)	
American Legion Award	128 (9.3%)	108 (8.1%)	120 (8.7%)	128 (9.3%)	112 (7.8%)	131 (9.1%)	120 (8.1%)	145 (9.9%)	128 (9.2%)	

*President or Vice President.

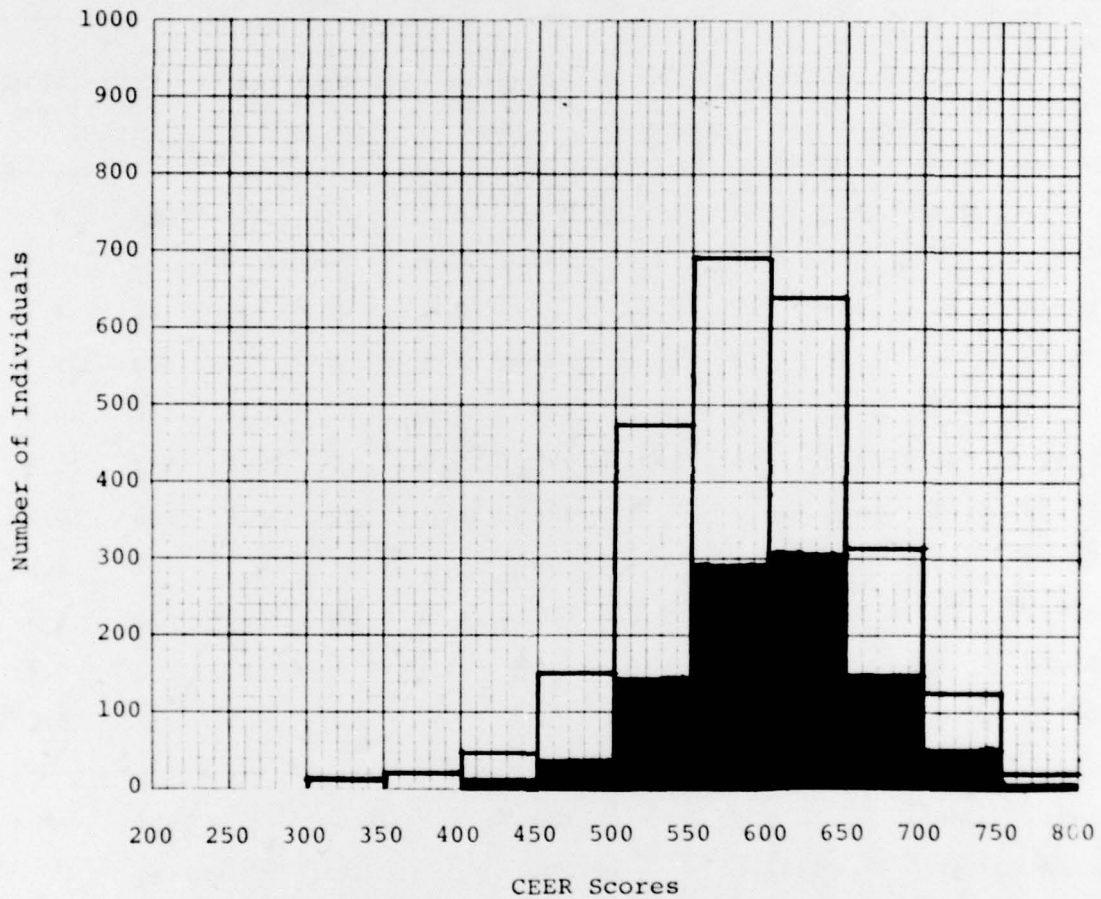
TABLE 1a

SELECTED CHARACTERISTICS OF CADETS IN THE CLASSES OF 1974 THROUGH 1982

	CLASS									
	1974	1975	1976	1977	1978	1979	1980	1981	1982	
Cadets with 1 or More Semester ^a of College	154(11.3%)	191(14.3%)*	194(14.1%)*	201(14.6%)*	195(13.6%)*	217(15.5%)*	225(15.2%)*	263(17.9%)*	213(15.3%)*	
Sons or Daughters of Alumni of USMA	71 (5.2%)	66 (4.9%)	59 (4.3%)	64 (4.7%)	50 (3.5%)	64 (4.5%)	59 (4.0%)	62 (4.2%)	57 (4.1%)	
Attended USMA Preparatory School	188(13.7%)	147(11.0%)	156(11.3%)	194(14.1%)	187(13.0%)	211(14.7%)	179(12.1%)	162(11.0%)	211(15.2%)	
Attended Public High School	1171(85.3%)	1122(83.8%)	1171(85.0%)	1129(82.0%)	1216(84.8%)	1231(85.9%)	1283(86.4%)	1259(85.7%)	1194(85.4%)	
Attended Private High School	202(14.7%)	215(16.1%)	206(15.0%)	247(18.0%)	219(15.2%)	202(14.1%)	198(13.4%)	208(14.2%)	201(14.5%)	
Rank in High School Class										
Top Fifth	1057(76.9%)	947(70.7%)	966(70.1%)	928(67.4%)	1019(71.0%)	1011(70.6%)	1116(75.2%)	1070(72.9%)	1055(75.5%)	
Second Fifth	229(16.7%)	280(20.9%)	297(21.6%)	317(23.0%)	290(20.2%)	310(21.6%)	260(17.5%)	287(19.5%)	241(17.2%)	
Third Fifth	75 (5.5%)	96 (7.2%)	98 (7.2%)	106 (7.7%)	99 (6.9%)	90 (6.3%)	90 (6.3%)	95 (6.5%)	89 (6.4%)	
Fourth Fifth	8 (0.6%)	10 (0.8%)	14 (1.0%)	21 (1.5%)	20 (1.4%)	15 (1.1%)	12 (0.8%)	13 (0.9%)	8 (0.6%)	
Bottom Fifth	3 (0.2%)	4 (0.3%)	2 (0.2%)	2 (0.2%)	5 (0.4%)	2 (0.1%)	3 (0.2%)	2 (0.1%)	2 (0.1%)	
Valedictorians	56 (4.1%)	68 (5.1%)	65 (4.7%)	59 (4.3%)	81 (5.6%)	86 (6.0%)	83 (5.6%)	90 (6.1%)	86 (6.2%)	
Salutatorians	57 (4.2%)	40 (3.0%)	32 (2.3%)	53 (3.9%)	56 (3.9%)	58 (4.0%)	58 (3.9%)	66 (4.5%)	62 (4.5%)	
N =	1373	1339	1378	1376	1435	1433	1485	1469	1396	

^aIn 1975 through 1982 indicates one or more months of college.

		<u>Number</u>	<u>Mean</u>	<u>SD</u>	
Candidates	□	Candidates	2463	589.91	68.26
Cadets	■	Cadets	980	602.40	60.45



No. Candidates	0	0	5	10	43	151	469	690	640	314	123	18
% Entered	0	0	0	0	9.3	25.2	30.9	41.4	47.2	45.5	43.1	50.0
No. Cadets	0	0	0	0	4	38	145	286	302	143	53	9

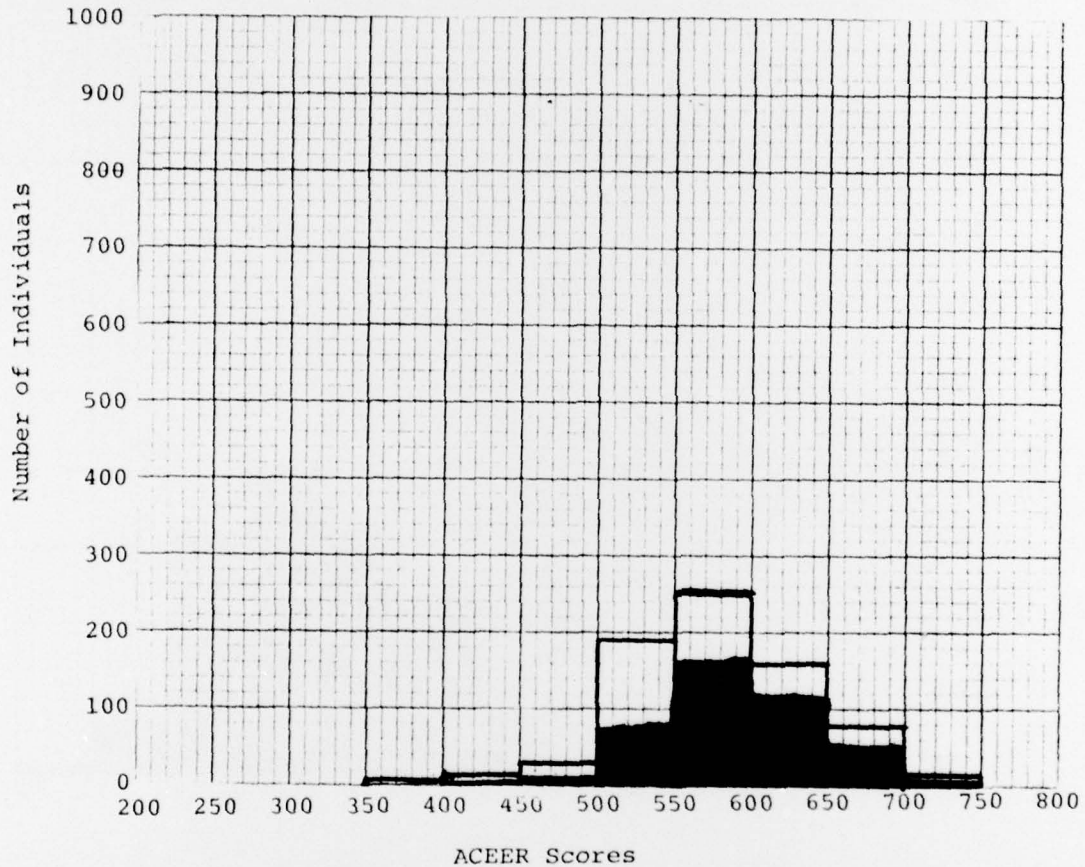
TABLE 2 COMPARISON OF THE NUMBER OF CADETS (EVALUATED USING CEER) WITH THE NUMBER OF FULLY EXAMINED CANDIDATES (EVALUATED USING CEER) AT EACH CEER SCORE LEVEL FOR THE CLASS OF 1982

TABLE 3
 DISTRIBUTION OF SCORES ON WHOLE CANDIDATE SCORE COMPONENTS
 FOR THE CLASS OF 1982

Score Ranges	Academic		Male Physical Aptitude (PAE)		Female Physical Aptitude (PAE)		Leadership Potential (LPS)			
	CEER	ACEER								
	No.	%	No.	%	No.	%	No.	%	No.	%
750-800	9	0.9	1	0.2	13	1.0	0	0	5	0.4
700-749	53	5.4	13	3.1	31	2.4	2	1.6	66	4.7
650-699	143	14.6	48	11.6	104	8.2	3	2.4	303	21.7
600-649	302	30.8	109	26.3	223	17.6	13	10.4	398	28.6
550-599	286	29.2	159	38.4	292	23.0	15	12.0	304	21.9
500-549	145	14.8	71	17.2	336	26.5	41	32.8	224	16.1
450-499	38	3.9	12	2.9	209	16.5	33	26.4	68	4.9
400-499	4	0.4	1	0.2	57	4.5	14	11.2	20	1.4
350-399	0	0	0	0	3	2.3	4	3.2	5	0.4
300-349	0	0	0	0	0	0	0	0	1	0.1

Total	980		414		1268		125		1394	
Mean	602.40		592.54		559.96		516.71		601.87	
S.D.	60.45		54.48		72.37		72.20		66.69	

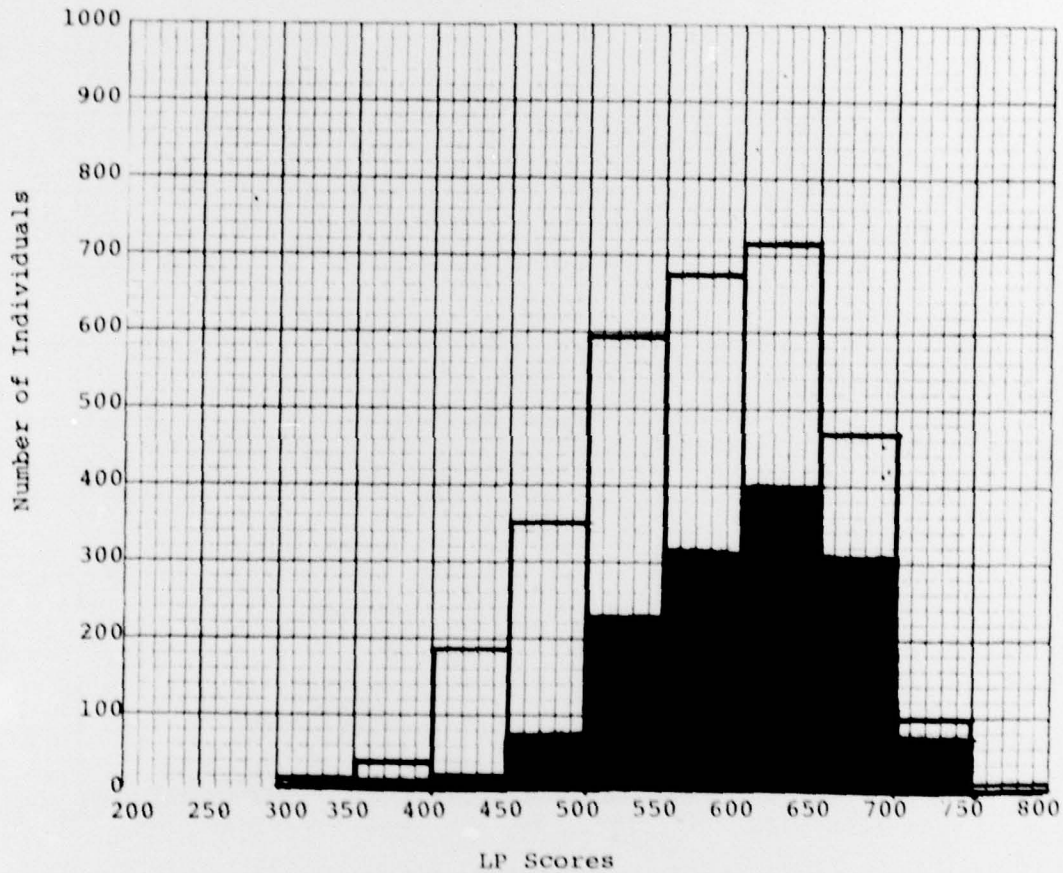
			<u>Number</u>	<u>Mean</u>	<u>SD</u>
Candidates	□	Candidates	673	586.07	56.86
Cadets	■	Cadets	414	592.54	54.58



	ACEER Scores											
No. Candidates	0	0	0	2	3	28	138	250	158	75	18	1
% Entered	0	0	0	0	33.3	42.9	51.4	63.6	69.0	64.0	72.2	100
No. Cadets	0	0	0	0	1	12	71	159	109	48	13	1




TABLE 4 COMPARISON OF THE NUMBER OF CADETS (EVALUATED USING ACEER) WITH THE NUMBER OF FULLY EXAMINED CANDIDATES (EVALUATED USING ACEER) AT EACH ACEER SCORE LEVEL FOR THE CLASS OF 1982.

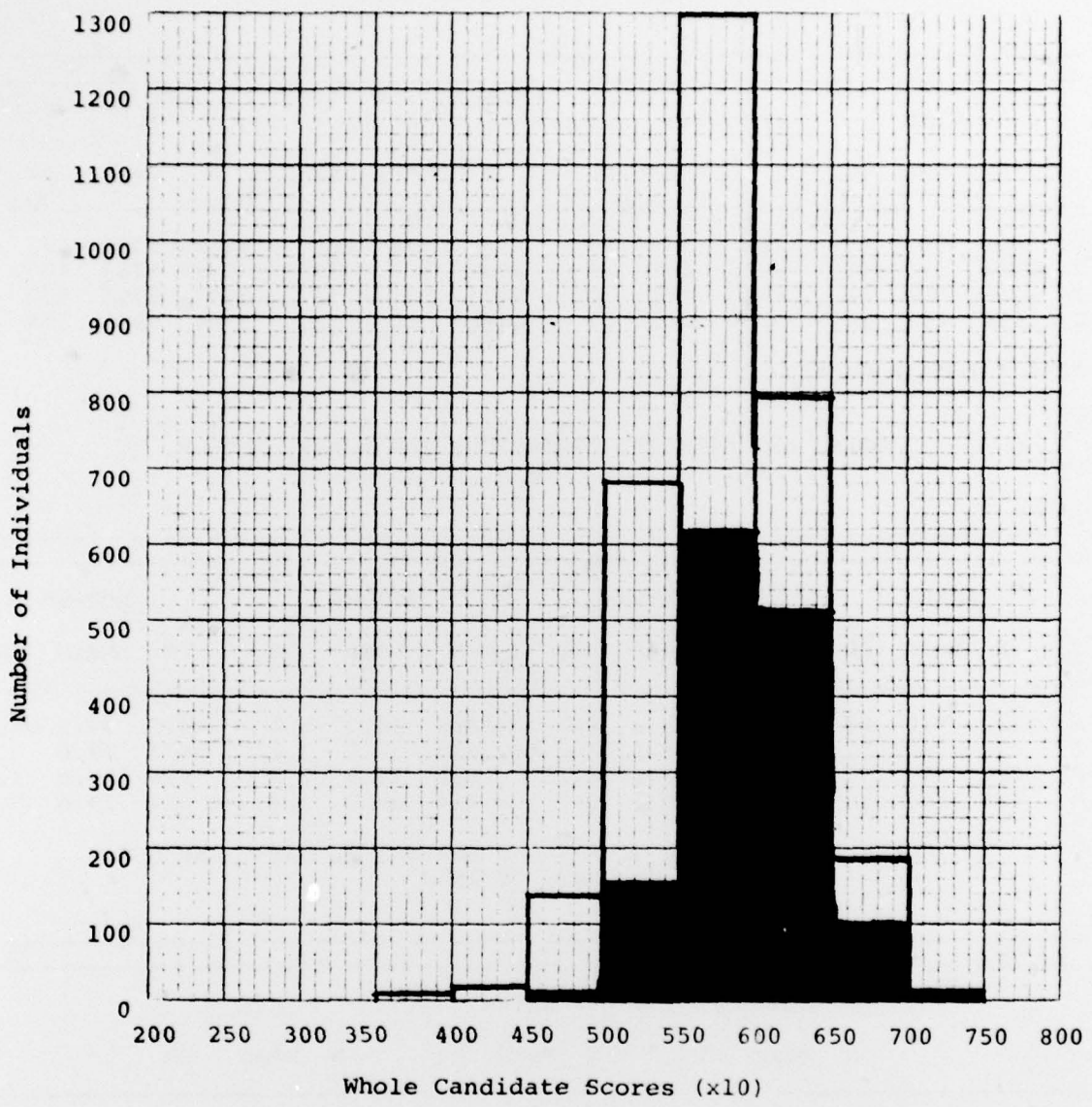
		<u>Number</u>	<u>Mean</u>	<u>SD</u>	
Candidates	□	Candidates	3132	572.56	79.14
Cadets	■	Cadets	1394	601.87	66.96



No. Candidates	0	0	11	38	182	347	596	674	716	463	98	7
% Entered	0	0	9.1	13.2	11.0	19.6	37.6	45.1	55.6	65.4	67.3	71.4
No. Cadets	0	0	1	5	20	68	224	304	398	303	66	5

TABLE 5 COMPARISON OF THE NUMBER OF CADETS WITH THE NUMBER OF FULLY EXAMINED CANDIDATES AT EACH LEADERSHIP POTENTIAL FOR THE CLASS OF 1982

		<u>Number</u>	<u>Mean</u>	<u>SD</u>
Candidates		Candidates 3132	578.25	47.07
Cadets		Cadets 1394	595.97	37.35



	Whole Candidate Scores (x10)											
No. Candidates	0	0	0	3	17	136	680	1304	795	188	9	0
% Entered	0	0	0	0	0	5.9	22.6	47.2	64.7	52.1	44.4	0
No. Cadets	0	0	0	0	0	8	154	616	514	98	4	0

TABLE 6 COMPARISON OF THE NUMBER OF CADETS WITH THE NUMBER OF FULLY EXAMINED CANDIDATES AT EACH WHOLE CANDIDATE SCORE LEVEL FOR THE CLASS OF 1982

TABLE 7
 MEANS AND STANDARD DEVIATIONS FOR CEER, LPS, PAE
 AND WCS, CLASS OF 1982

	CEER			LPS			PAE			WCS		
	N	Mean	Sd	N	Mean	SD	N	Mean	SD	N	Mean	SD
A	5974	547	89	8162	542	88	4943	516	101	8162	5396	652
T	2463	590	68	3132	573	79	2958	533	89	3132	5783	470
M	2285	590	68	2907	576	78	2911	533	88	2907	5793	470
C	980	602	60	1394	602	67	1268*	560	72	1394	5960	374

*PAE for Male Cadets

MEANS AND STANDARD DEVIATIONS FOR ACEER, ACT-EN,
 ACT, MA AND ACT-NA, CLASS OF 1982

	ACEER			ACT-EN			ACT-MA			ACT-NA		
	N	Mean	SD	N	Mean	SD	N	Mean	SD	N	Mean	SD
A	2312	547	86	2316	21.5	4.1	2316	26.3	5.3	2312	27.5	4.7
T	673	586	57	673	23.1	3.2	673	28.9	3.2	673	29.0	3.5
M	626	585	57	626	23.1	3.2	626	28.9	3.2	626	29.0	3.5
C	414	593	54	414	23.2	3.0	414	29.0	3.1	414	29.0	3.4

MEANS AND STANDARD DEVIATIONS FOR SAT-V, SAT-M AND HSR,
 CLASS OF 1982

	SAT-V			SAT-M			HSR		
	N	Mean	SD	N	Mean	SD	N	Mean	SD
A	5544	513	95	5546	583	97	8289	524	116
T	2463	549	80	2463	625	75	3136	556	107
M	2285	549	79	2285	626	75	2911	553	108
C	980	560	76	980	637	66	1394	569	104

A = All Candidates Tested on Variables
 T = All Candidates Fully Tested on CEER (ACEER), LPS, PAE and WCS
 M = All Candidates Fully Tested and Medically Qualified
 C = Admitted Candidates Who Became Cadets

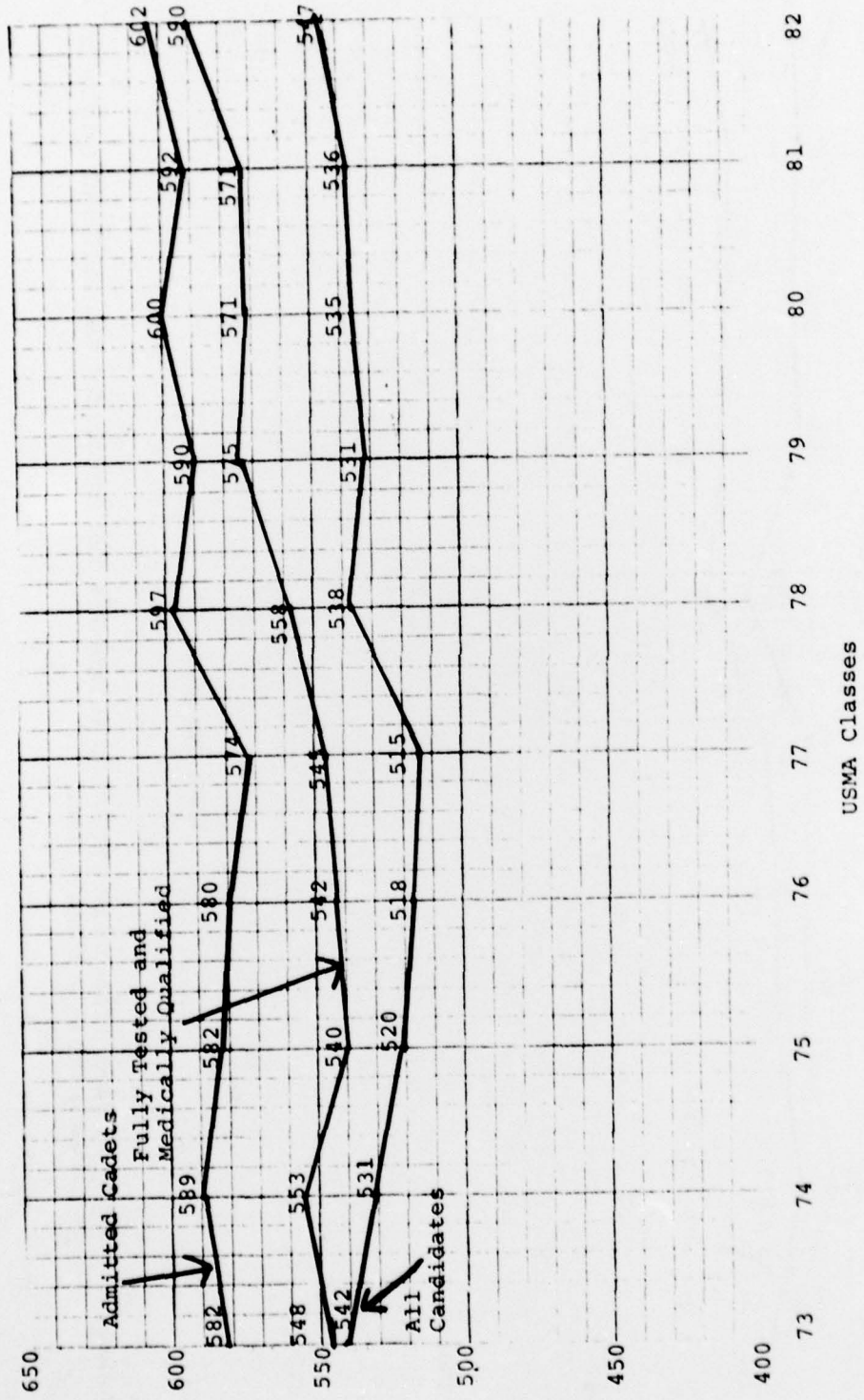


TABLE 8. TRENDS OF MEAN CEER SCORES FOR THE CANDIDATES AND ENTERING CADETS OF THE CLASSES OF 1973 THROUGH 1982

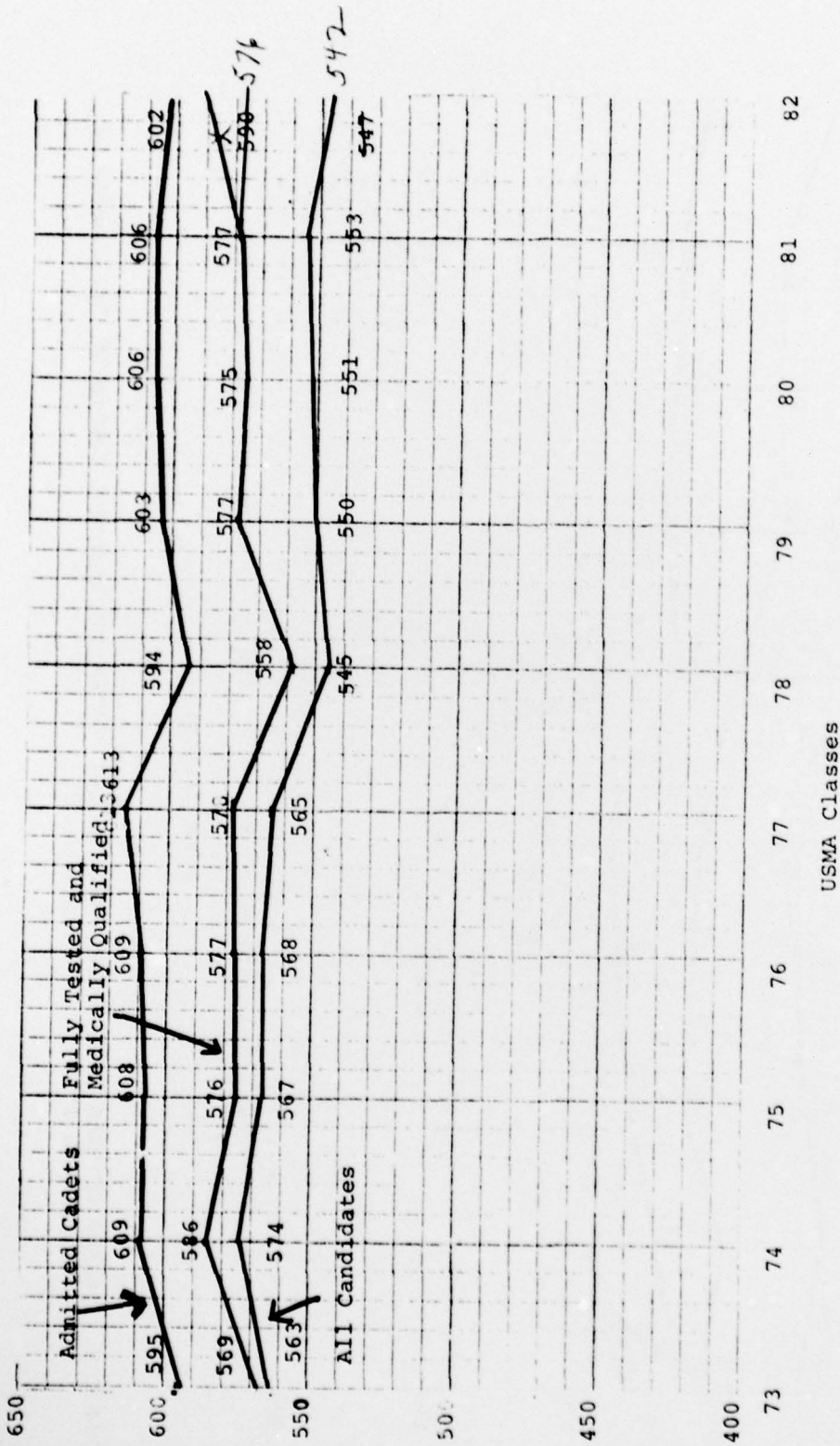


TABLE 9. TRENDS OF MEAN LEADERSHIP POTENTIAL SCORES FOR THE CANDIDATES AND ENTERING CADETS OF THE CLASSES OF 1973 THROUGH 1982

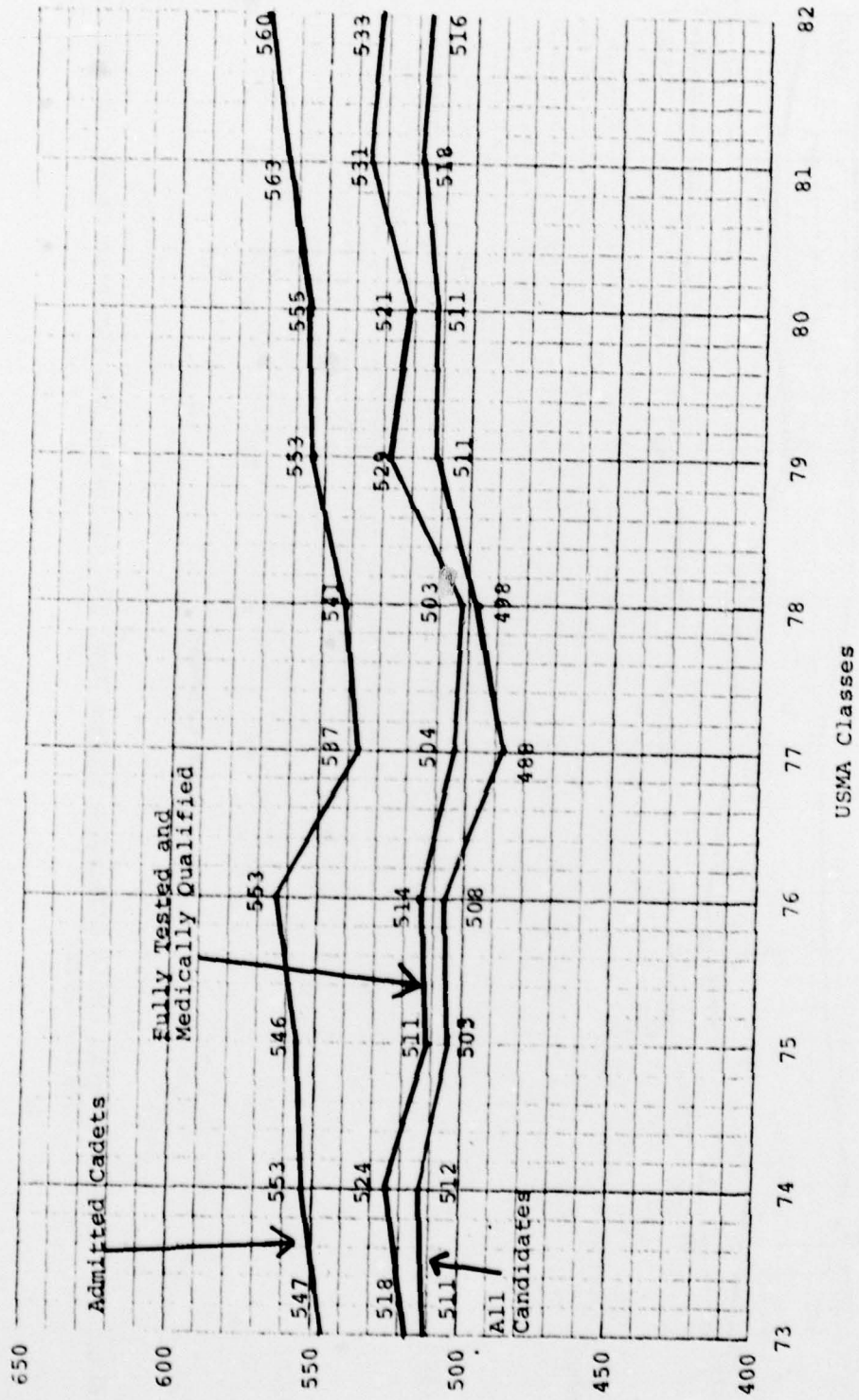


TABLE 10. TRENDS OF MEAN PAE SCORES FOR THE CANDIDATES AND ENTERING CADETS OF THE CLASSES OF 1973 THROUGH 1982 (PAE for admitted cadets in Class of 1980-1982 is for male cadets only)

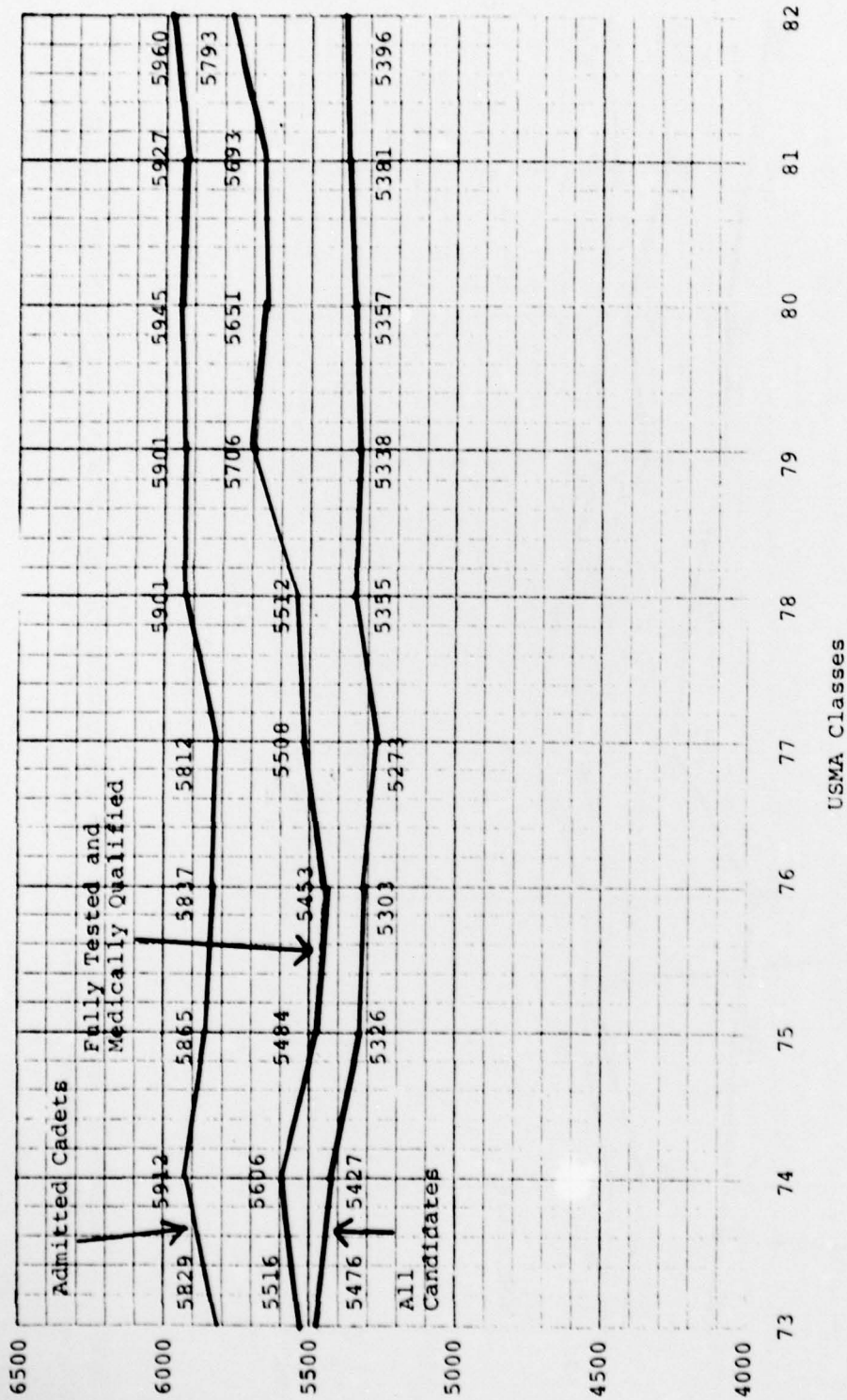


TABLE 11. TRENDS OF MEAN WHOLE CANDIDATE SCORES FOR THE CANDIDATES AND ENTERING CADETS OF THE CLASSES OF 1973 THROUGH 1982

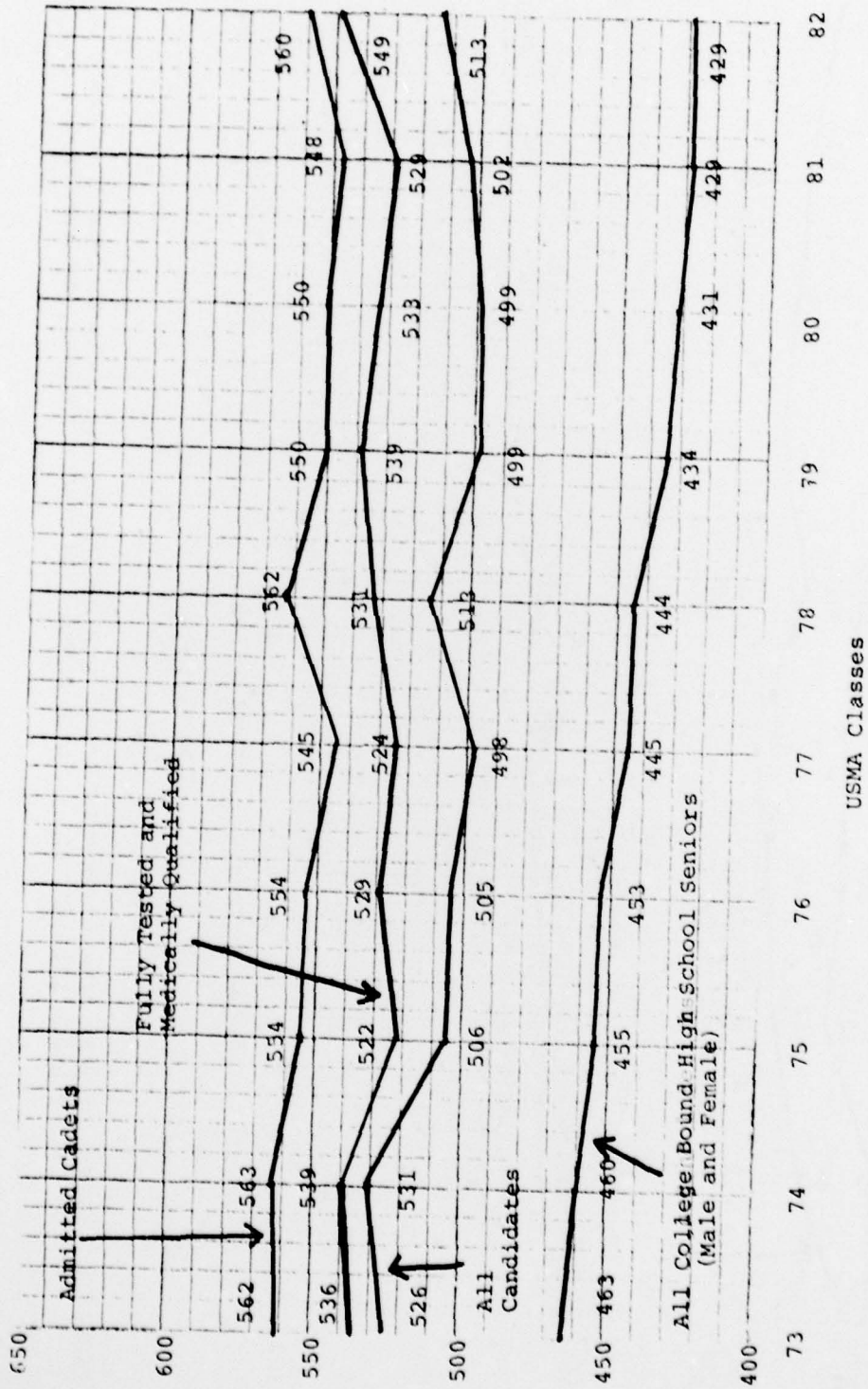


TABLE 12. TRENDS IN MEAN SAT-VERBAL SCORES FOR THE CANDIDATES AND ENTERING CADETS OF THE CLASSES OF 1973 THROUGH 1982 AND ALL COLLEGE BOUND HIGH SCHOOL SENIORS, NATIONWIDE

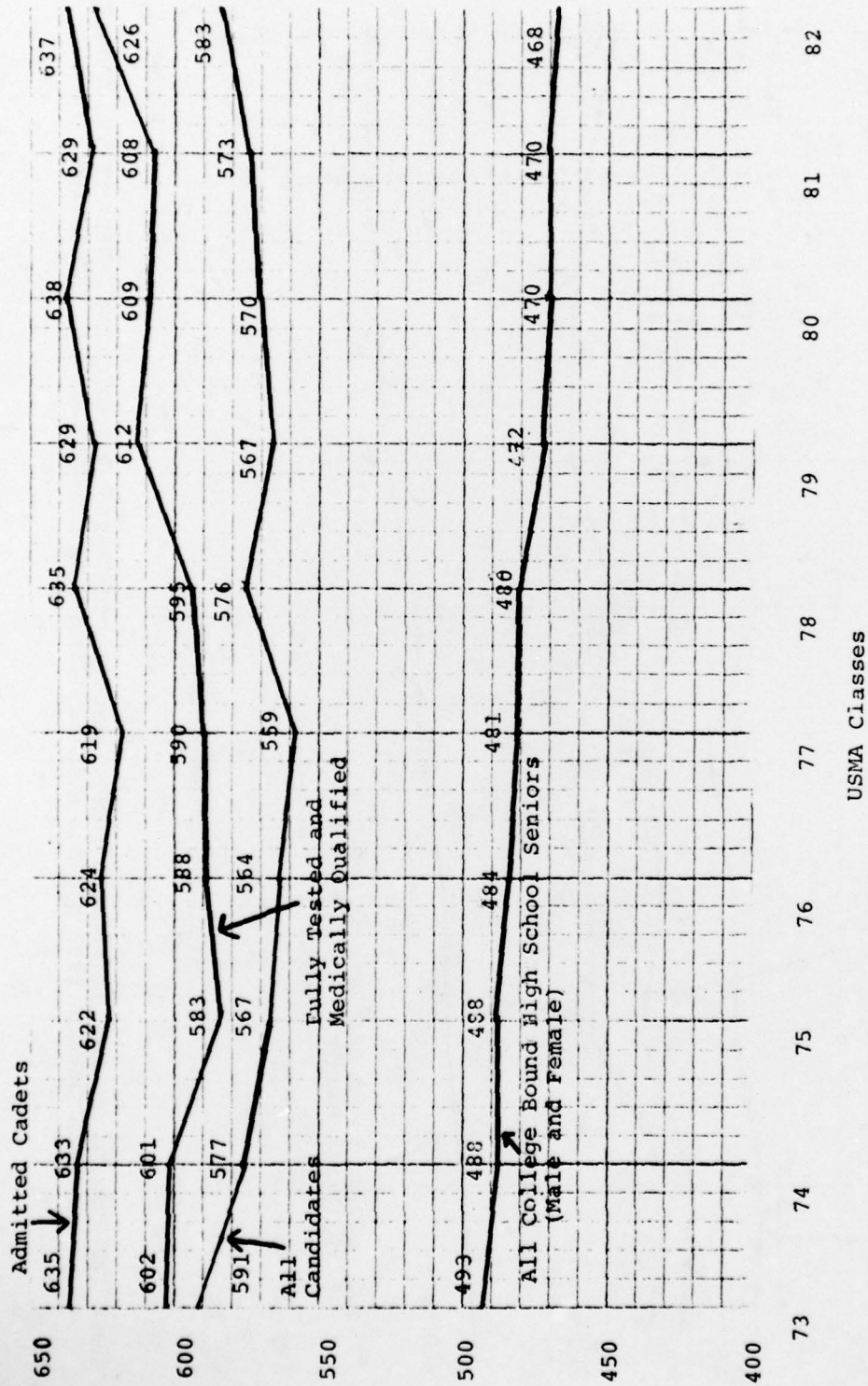


TABLE 13. TRENDS OF MEAN SAT-MATHEMATICS SCORES FOR CANDIDATES AND ENTERING CADETS OF THE CLASSES OF 1973 THROUGH 1982 AND ALL COLLEGE BOUND HIGH SCHOOL SENIORS, NATIONWIDE

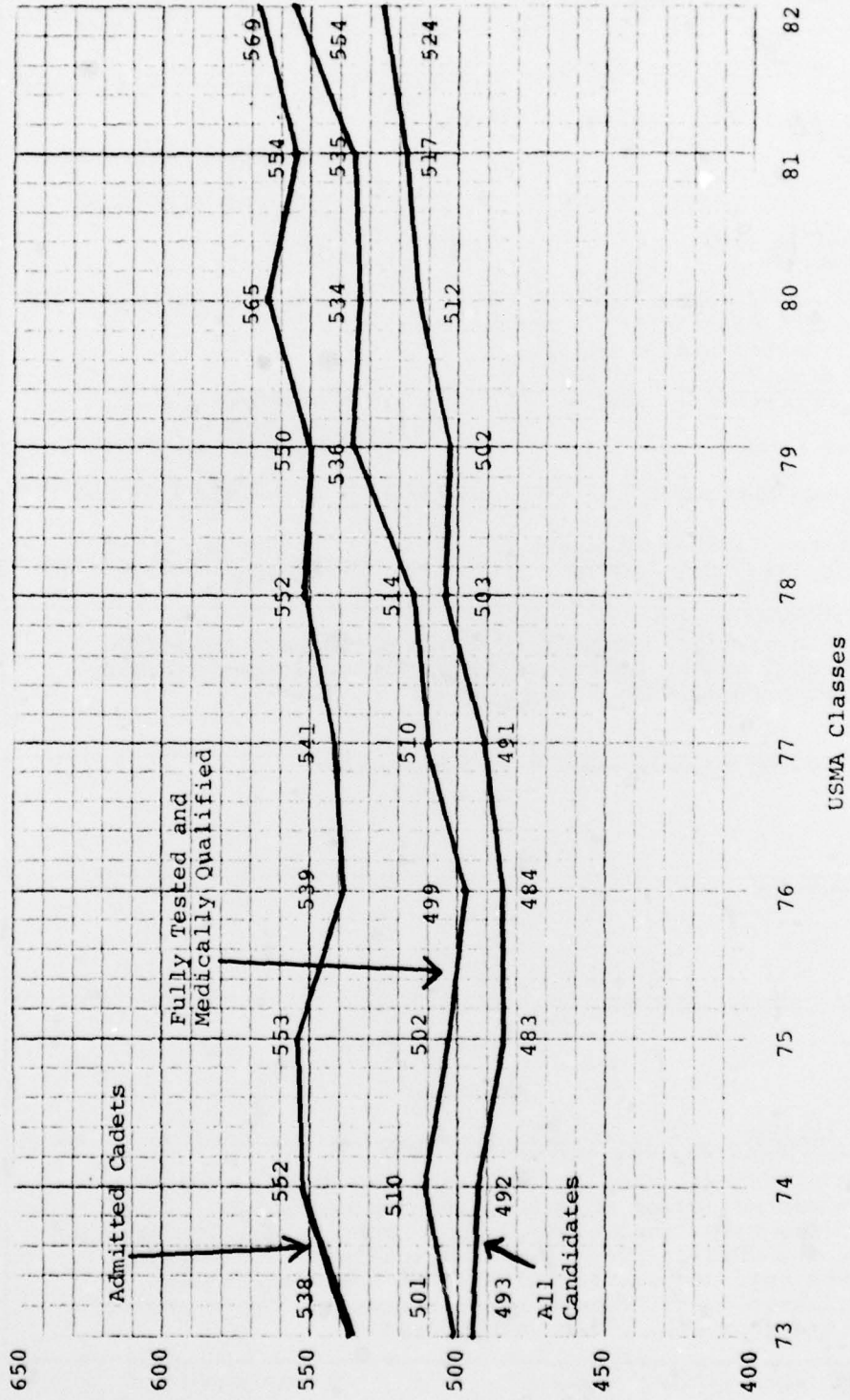


TABLE 14. TRENDS OF MEAN HIGH SCHOOL SCORES FOR THE CANDIDATES AND CADETS OF THE CLASSES OF 1973 THROUGH 1982

