

AD-A078 948

MICHIGAN STATE UNIV EAST LANSING DEPT OF STATISTICS --ETC F/8 12/1  
THE ASYMPTOTIC DISTRIBUTION OF MORTALITY RATES IN COMPETING RIS--ETC(U)  
DEC 79 J C GARDINER N00014-79-C-0522

UNCLASSIFIED

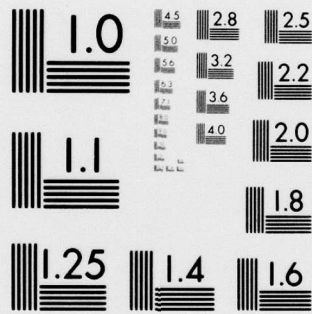
RM-405

NL

| OF |  
AD  
A078948



END  
DATE  
FILMED  
1 - 80  
DDC



MICROCOPY RESOLUTION TEST CHART  
NATIONAL BUREAU OF STANDARDS-1963-A

AD A 0 78948

LEVEL II

15 N00014-79-C-0522,  
✓ PHS-BSRC-S07-RR07049-14

Accession For	
NTIS GRA&I	<input checked="" type="checkbox"/>
DDI TAB	<input type="checkbox"/>
Unannounced	<input type="checkbox"/>
Justification	
By	
Distribution/	
Availability Codes	
avail and/or	
special	

6 THE ASYMPTOTIC DISTRIBUTION OF MORTALITY RATES IN  
COMPETING RISKS ANALYSES,

10 Joseph C. Gardiner

Department of Statistics and Probability  
Michigan State University, East Lansing, Michigan 48824, U.S.A.

A

14 RM-405

12 76

11 Dec 79

DDC  
RECEIVED  
JAN 8 1980  
RECEIVED  
A

Summary

For a sample of individuals from an animal or human population under observation in a clinical trial or life test, mortality rates are defined for each risk to which the population is exposed. By considering only the crude risk functions and cause-specific failure rates in a basic competing risks model, these mortality rates are shown to have an asymptotic normal distribution. An expression for the asymptotic correlation between a pair of mortality rates is thus obtained and a necessary and sufficient condition for their asymptotic independence is investigated in some general situations with reference to only the cause-specific failure rates and the survival function of the individuals.

DISTRIBUTION STATEMENT A  
Approved for public release  
Distribution Unlimited

Key Words: Asymptotic independence, competing risks, mortality rates,  
multivariate normal distribution, survival analysis.

400 499

JOB

## 1. Introduction

We shall consider here a basic statistical model in which an animal or human population is under insult by a totality of  $k$  mutually exclusive competing risks. We are concerned with experiments in which a subpopulation of  $n$  units is under continual surveillance from the onset with the time and type of occurrence of the responses monitored, whenever possible, for each unit. The term 'response' is given a wide interpretation and encompasses a broad class of response data from clinical and epidemiologic studies in which the nature of the observed response can be attributed to exactly one of several causes. In a variety of such investigations a group of individuals may be followed with interest in a specific cause of the observed response. For instance in a laboratory animal experiment concerned with the exposure to certain carcinogenic pollutants the terminal response may be the appearance of a tumor or death caused by one of several organotropic carcinomas -- intestine, bladder, lung, liver -- but concern may be focused on only one specific carcinoma. Experiments of this type are often complicated by the presence or need for censoring designs. Limitations on time or economic considerations may prevent the luxury of prolonged experimentation beyond specified constraints or, in some instances, a desire for a preliminary analysis of the current accumulated information in a study necessarily entails incomplete data. On the other hand withdrawals from a clinical study and subsequent loss to follow-up must be considered in some analyses.

In this paper we consider the mortality or response rate of the competing factors evaluated from data recorded in a clinical trial or life test in which  $n$  specimens are observed either throughout their lifetime or over a duration of time (Type I censoring). The statistical model which

we describe will also permit for designs in which items are withdrawn from observation at random (Random censoring).

The mortality rate for a risk type is defined as the ratio of the observed frequency of failures among the  $n$  specimens attributed to that risk to the total observation time for all units. However, as the occurrence of a failure by one cause necessarily precludes failure by the other risks these mortality rates will in general be dependent and thus any statistical procedures based on them for inferences on a particular risk type should take into account the extent of the possible influence of the remaining risks. We shall show that under very general conditions the vector of mortality rates for the  $k$  competing risks operating on a random sample of  $n$  specimens has a limiting  $k$ -variate normal distribution. An explicit expression for the asymptotic correlation of a pair of mortality rates is obtained and the sign of this correlation is seen to be related to the monotonicity of the cause-specific failure rates of the individual risks (when all risks are operative). Examples are cited where this correlation is zero thereby ensuring asymptotic independence of these two rates. We also explore this in the proportional hazards model of Chiang (1968).

The evaluation of mortality rates and their use in some survival analyses have been studied by several researchers in recent times. Tolley and Norman (1979), Vaeth (1979) and Zelen and Dannemiller (1961) draw attention to the possible influence of competing risks on a specific mortality rate under study. Our results based on very general assumptions (see Section 2) indicate, at least asymptotically, the extent of this dependency and now allow for procedures under broader conditions. Byar (1977) has advocated the use of mortality rates evaluated from various categories defined by prognostic variables in some medical statistical

investigations and has given testing procedures for the homogeneity of these rates on the assumption that the response times of the competing variables follow exponential distributions. A more general picture now emerges from our results.

## 2. Preliminaries

We consider a random sample of  $n$  specimens under observation from the onset until time  $t$ . For each subject we record either the time of failure (death)  $Y$  and the associated cause, or the censoring time  $t$ . The variable  $J \in \{1, \dots, k\}$  labels the specific cause of failure, if observed before censoring. For the purpose of our analysis it is not necessary to consider latent (conceptual) life times corresponding to the various risks and a joint distribution of these lifetimes as is customary in some situations (for example, Moeschberger and David (1971), Hoel (1972), Gail (1975) and Elandt-Johnson (1976)). Tsiatis (1975) and Peterson (1976) have discussed the serious identifiability problems that rise in connection with assumptions about this joint distribution of conceptual life times when employing data of the type  $(Y, J)$ . Accordingly we shall only deal with the absolutely continuous functions  $Q_i$ , called crude risks, defined by

$$Q_i(t) = P[Y \leq t, J = i], \quad t \geq 0, \quad i = 1, \dots, k \quad (1)$$

and the cause-specific failure rates  $g_i$  given by

$$g_i(t) = \lim_{\Delta t \rightarrow 0} P[t < Y \leq t + \Delta t, J = i | Y > t] / \Delta t, \quad i = 1, \dots, k. \quad (2)$$

We may interpret  $g_i(t)$  as the instantaneous probability of failure by cause  $i$  at time  $t$  when all risks are operative, given survival from all risks up to time  $t$ . In some contexts the  $g_i$  have also been referred

to as the rates of decrement, hazard rates, forces of mortality and intensity rates. Now, by virtue of (1) and (2) we have

$$Q_i(t) = \int_0^t g_i(y)S(y)dy, \quad t \geq 0 \quad (3)$$

where

$$S(t) = P[Y > t], \quad t \geq 0 \quad (4)$$

is called the survival function of the units. Since the  $k$  risks are mutually exclusive and exhaustive one has

$$\sum_{i=1}^k Q_i(t) = 1 - S(t) \quad \text{and} \quad \sum_{i=1}^k Q_i(\infty) = 1 \quad (5)$$

Throughout this paper we make the mild assumption that  $EY > 0$  and  $EY^2 < \infty$ .

Suppose the  $n$  subjects are monitored over the time interval  $[0, t)$ . The total observation time is

$$T_n(t) = \sum_{\ell=1}^n Y_{\ell} \wedge t \quad (6)$$

and the number of recorded failures due to cause  $i$  is

$$D_{n,i}(t) = \sum_{\ell=1}^n I[Y_{\ell} \leq t, J_{\ell} = i] \quad (7)$$

Here  $x \wedge y = \min(x, y)$  and  $I(A)$  denotes the indicator of a set  $A$ . In some contexts  $T_n(t)$  has been designated the 'time on trial' or 'person years at risk' of the sample. The mortality rate for the cause  $i$  evaluated from this information recorded in the interval  $[0, t)$  is defined as

$$\Gamma_{n,i}(t) = D_{n,i}(t)/T_n(t) \quad (8)$$

We are interested in the vector of mortality rates designated by

$$\underline{\Gamma}_n(t) = (\Gamma_{n,1}(t), \dots, \Gamma_{n,k}(t)) \quad (9)$$

If all units are monitored over their entire life time the corresponding mortality rates can be obtained from the above by setting  $t$  equal to infinity. To deal with random withdrawals we suppose each individual has its own withdrawal time  $Z$  and so corresponding to (6) and (7) we may define

$$T_n^* = \sum_{\ell=1}^n Y_{\ell} \wedge Z_{\ell}; D_{n,i}^* = \sum_{\ell=1}^n I[Y_{\ell} \leq Z_{\ell}, J_{\ell} = i], 1 \leq i \leq k. \quad (10)$$

In this formulation we may consider withdrawals as a competing risk with its own survival time  $Z$ . With this interpretation the situation reduces to that of observing the sample until all units have responded.

### 3. Distribution of mortality rates and discussion

In view of our definitions (1) and (4) we obtain from (6) and (7), for each  $i, 1 \leq i \leq k$  and  $t \geq 0$

$$E D_{n,i}(t) = \sum_{\ell=1}^n P[Y_{\ell} \leq t, J_{\ell} = i] = n Q_i(t), \quad (11)$$

$$E T_n(t) = \sum_{\ell=1}^n \int_0^t P[Y_{\ell} > y] dy = n \int_0^t S(y) dy. \quad (12)$$

Therefore using (3) we define the vector  $\chi(t) = (\gamma_1(t), \dots, \gamma_k(t))$  where

$$\gamma_i(t) = \frac{E D_{n,i}(t)}{E T_n(t)} = \frac{\int_0^t g_i(y) S(y) dy}{\int_0^t S(y) dy}, 1 \leq i \leq k, t \geq 0. \quad (13)$$

We shall also deal with a  $k \times k$  matrix  $\Sigma(t)$  whose  $(i,j)$ th element  $\sigma_{ij}(t)$  is given by

$$\sigma_{ij}(t) = \left\{ \int_0^t S(y) dy \right\}^{-2} \{ Q_i(t) (\frac{1}{2} \delta_{ij} - C_j(t)) + Q_j(t) (\frac{1}{2} \delta_{ij} - C_i(t)) \}, \quad (14)$$

$1 \leq i, j \leq k$ , where  $\delta_{ij}$  is the Kronecker delta ( $\delta_{ij} = 1$ , all  $i$  and

$\delta_{ij} = 0$  otherwise) and  $C_i(t)$  is defined by

$$C_i(t) = \left[ \frac{\int_0^t y g_i(y) S(y) dy}{\int_0^t S(y) dy} - \frac{(\int_0^t g_i(y) S(y) dy)(\int_0^t y S(y) dy)}{(\int_0^t S(y) dy)^2} \right]. \quad (15)$$

Proposition. With  $t$  held fixed and  $\chi(t)$ ,  $\xi(t)$  defined by (13) and (14) respectively

$$L[n^{\frac{1}{2}}(\Gamma_n(t) - \chi(t))] \rightarrow N_k(Q, \xi(t)) \text{ as } n \rightarrow \infty. \quad (16)$$

Corollary. With the interpretation made on random withdrawals

$$L[n^{\frac{1}{2}}(\Gamma(\infty) - \chi(\infty))] \rightarrow N_k(Q, \xi(\infty)) \text{ as } n \rightarrow \infty.$$

The proof of the proposition will be taken up in the next section.

We devote the remainder of this section to some remarks and examples.

Remark 1. From (14) we have that the asymptotic correlation between the mortality rates  $\Gamma_i(t)$  and  $\Gamma_j(t)$  is

$$\frac{-(Q_i(t)C_j(t) + Q_j(t)C_i(t))}{\sqrt{Q_i(t)Q_j(t)(1 - 2C_i(t))(1 - 2C_j(t))}}$$

and thus (16) provides a necessary and sufficient condition for the asymptotic independence of these rates, namely

$$Q_i(t)C_j(t) + Q_j(t)C_i(t) = 0.$$

An analogous statement can be made in the case where experimentation is monitored throughout the life time of all units of the sample.

Remark 2. We shall show that the  $C_i(t)$  of (15) may be interpreted as covariances. To see this let us define a nonnegative random variable  $W_t$  whose probability density function is  $S(x)/(\int_0^t S(y)dy)$ , for  $x \in [0, t]$  and zero otherwise. Then (15) may be rewritten as  $C_i(t) = \text{Cov}(W_t, g_i(W_t))$ . Hence with  $t$  held fixed,  $C_i(t) \geq 0$  (respectively  $\leq 0$ ) according as the cause-specific failure rate  $x \rightarrow g_i(x)$  is nondecreasing (respectively

nonincreasing) in  $[0, t)$ . In particular  $C_i(t) = 0$  if  $x \rightarrow g_i(x)$  is a constant function on  $[0, t)$ . Note that  $C_i(t)$  is never zero if  $g_i$  is (strictly) increasing or decreasing over  $[0, t)$ . Similar remarks hold in the situation in which the sample is monitored until all units have failed.

Remark 3. Now if for a pair of risks  $i, j$  the failure rates  $g_i, g_j$  are both nondecreasing (respectively nonincreasing) in  $[0, t)$ , the asymptotic correlation of the mortality rates  $\Gamma_i(t), \Gamma_j(t)$  will be nonpositive (respectively nonnegative). In particular when both  $g_i, g_j$  are constant functions on  $[0, t)$ , this correlation is zero and hence from (16) this ensures the asymptotic independence of the rates  $\Gamma_i(t)$  and  $\Gamma_j(t)$ . It may also be noted that if all  $g_i$  are constant over  $[0, \infty)$ , then the hazard rate corresponding to the survival time  $Y$  is also constant ( $= \sum_{i=1}^k g_i$ ), whence  $Y$  must have the exponential distribution.

We present an example in which the mortality rates are asymptotically independent even though the corresponding failure rates are nonconstant.

Example 1. Consider a life test in which  $n$  items are observed throughout their life time. We specify a competing risks model with crude risk functions given by

$$Q_i(t) = \lambda_i(1 - \exp(-\lambda_i t)), \quad t \geq 0, \quad i = 1, 2,$$

with  $\lambda_1 > \lambda_2 > 0$  and  $\lambda_1 + \lambda_2 = 1$ . Then from (3) and (5) we have

$$S(t) = \lambda_1 \exp(-\lambda_1 t) + \lambda_2 \exp(-\lambda_2 t), \quad t \geq 0$$

$$g_i(t) = \exp(-\lambda_i t)/S(t), \quad t \geq 0, \quad i = 1, 2.$$

From the Corollary it will follow that the mortality rates  $\Gamma_1(\infty), \Gamma_2(\infty)$  are asymptotically independent provided  $(Q_1(\infty)C_2(\infty) + Q_2(\infty)C_1(\infty)) = 0$ .

From (15) we have in general

$$C_i(\infty) = \frac{E[YI[J = i]]}{EY} - \frac{1}{2} Q_i(\infty) \frac{EY^2}{(EY)^2}.$$

For our example a straightforward calculation shows

$$EY = \int_0^{\infty} S(y)dy = 2;$$

$$EY^2 = 2 \int_0^{\infty} y S(y)dy = 2(\lambda_1^{-1} + \lambda_2^{-1}).$$

Also  $Q_i(\infty) = \lambda_i$  and  $E(YI(J = i)) = \int_0^{\infty} y Q_i'(y)dy = 1; i = 1, 2.$  Hence

$$C_1(\infty) = \frac{1}{4}(1 - \lambda_1\lambda_2^{-1}),$$

$$C_2(\infty) = \frac{1}{4}(1 - \lambda_2\lambda_1^{-1})$$

and therefore  $(Q_1(\infty)C_2(\infty) + Q_2(\infty)C_1(\infty)) = 0.$  We note that  $g_1$  is strictly decreasing and  $g_2$  strictly increasing whence in view of Remark 2,

$C_1(\infty) < 0$  and  $C_2(\infty) > 0$  as is the case.

Remark 4. From our assumptions the total failure (hazard) rate corresponding to the survival time  $Y$  is  $h(t) = \sum_{i=1}^k g_i(t)$  with  $h(t) = -S'(t)/S(t).$

Now suppose Chiang's proportionality assumption holds, namely  $g_i(t) = c_i h(t),$

where the  $c_i (> 0)$  satisfy  $\sum_{i=1}^k c_i = 1.$  Therefore if  $Y$  has increasing failure rate (IFR) then  $h$  and so all  $g_i$  will be increasing and so

$C_i(t) > 0$  for all  $i$  and  $t.$  Hence any pair of mortality rates will be

negatively correlated. Likewise if  $Y$  has decreasing failure rate (DFR)

all pairs of mortality rates will be positively correlated. This holds for

any truncation time  $t.$

Again from (15), we obtain after some simplification

$$C = \sum_{i=1}^k C_i(\infty) = (1 - \frac{1}{2} \frac{EY^2}{(EY)^2}).$$

Under the proportionality assumption  $C_i(\infty) = c_i C,$  for all  $i.$  Thus if  $Y$  has increasing failure rate average (IFRA) then  $C > 0$  and again each pair of mortality rates  $\Gamma_i(\infty), \Gamma_j(\infty)$  will be negatively correlated. Of course if  $Y$  has IFR it has necessarily IFRA. Similar statements can be made when  $Y$  has decreasing failure rate average (DFRA).

Example 2. Suppose the crude risks are specified by

$$Q_i(t) = \mu_i \{\beta^\alpha \Gamma(\alpha)\}^{-1} \int_0^t y^{\alpha-1} e^{-y/\beta} dy, \quad t \geq 0, \quad i = 1, \dots, k$$

where  $\alpha, \beta$ , all  $\mu_i > 0$  and without loss of generality we take  $\sum_{i=1}^k \mu_i = 1$ . Here  $\Gamma$  denotes the gamma function. The survival time  $Y$  has the gamma distribution with parameters  $\alpha, \beta$ . We get

$$S(t) = \{\beta^\alpha \Gamma(\alpha)\}^{-1} \int_t^\infty y^{\alpha-1} e^{-y/\beta} dy$$

and

$$g_i(t) = \mu_i \int_0^\infty (1 + t^{-1}y)^{\alpha-1} e^{-y/\beta} dy = \mu_i h(t), \quad t \geq 0$$

where, as before,  $h$  is the failure rate of  $Y$ . Thus the proportionality assumption holds. Furthermore  $Y$  has IFR or DFR according as  $\alpha \geq 1$  or  $\alpha \leq 1$ . For  $\alpha = 1$ ,  $h$  is constant. A simple calculation will show  $C_i(\infty) = \frac{1}{2}\mu_i(1 - \alpha^{-1})$  and so unless  $\alpha = 1$ , no two mortality rates will be asymptotically independent.

#### 4. Proof of Proposition

From (6), (8) and (13) one obtains for each  $1 \leq i \leq k, t \geq 0$

$$n^{\frac{1}{2}}(\Gamma_{n,i}(t) - \gamma_i(t)) = \{n^{-1}T_n(t)\}^{-1} \{n^{-\frac{1}{2}} \sum_{\ell=1}^n Z_{i\ell}\} \quad (17)$$

where  $Z_{i\ell} = I[Y_\ell \leq t, J_\ell = i] - \gamma_i(t)\{Y_\ell \wedge t\}$ . Now, for each  $i, 1 \leq i \leq k$ , the  $Z_{i\ell}, 1 \leq \ell \leq n$  are independent and identically distributed (iid) random variables. Also  $E(Z_{i\ell}) = 0$ . We need to compute  $\text{Cov}(Z_{i\ell}, Z_{j\ell})$ . For simplicity in script write  $\eta_{i\ell} = I[Y_\ell \leq t, J_\ell = i]$ . Then

$$Z_{i\ell}Z_{j\ell} = \eta_{i\ell}\eta_{j\ell} - \gamma_i(t)\{Y_\ell \wedge t\}\eta_{j\ell} - \gamma_j(t)\{Y_\ell \wedge t\}\eta_{i\ell} + \gamma_i(t)\gamma_j(t)\{Y_\ell \wedge t\}^2. \quad (18)$$

$$\begin{aligned} \text{But } \eta_{i\ell} \eta_{j\ell} &= 0, \text{ if } i \neq j \\ &= \eta_{i\ell} \text{ if } i = j. \end{aligned} \quad (19)$$

$$\text{Also } E\{(Y_\ell \wedge t) \eta_{i\ell}\} = \int_0^t y Q_i'(y) dy, \quad 1 \leq i \leq k. \quad (20)$$

Hence from (18) through (20), if  $i \neq j$ ,

$$\begin{aligned} \text{Cov}(Z_{i\ell}, Z_{j\ell}) &= -\gamma_i(t) \left\{ \int_0^t y Q_i'(y) dy \right\} - \gamma_j(t) \left\{ \int_0^t y Q_j'(t) dy \right\} \\ &\quad + 2\gamma_i(t) \gamma_j(t) \left\{ \int_0^t y S(y) dy \right\}. \end{aligned} \quad (21)$$

Recall again (13) and (15). Then after some routine manipulations (21) can be rewritten

$$\text{Cov}(Z_{i\ell}, Z_{j\ell}) = -\{Q_i(t)C_j(t) + Q_j(t)C_i(t)\} \quad (22)$$

for all  $t \geq 0$  and  $1 \leq i, j \leq k$ , with  $i \neq j$ . But from (18) and (19)

$$\begin{aligned} \text{Cov}(Z_{i\ell}, Z_{i\ell}) &= \text{Var}(Z_{i\ell}) = E\{\eta_{i\ell} - 2\gamma_i(t)(Y_\ell \wedge t)\eta_{i\ell} + \gamma_i^2(t)(Y_\ell \wedge t)^2\} \\ &= Q_i(t) - 2\gamma_i(t) \int_0^t y Q_i'(y) dy + 2\gamma_i^2(t) \int_0^t y S(y) dy \\ &= Q_i(t)(1 - 2C_i(t)), \quad 1 \leq i \leq k, \quad t \geq 0. \end{aligned} \quad (23)$$

To establish the proposition consider the random variable

$$X_n(t) = \sum_{i=1}^k a_i \{n^{1/2}(\Gamma_{n,i}(t) - \gamma_i(t))\} = \{n^{-1}T_n(t)\}^{-1} n^{-1/2} \sum_{\ell=1}^n Z_\ell^* \quad (24)$$

where the  $a_i$ 's are arbitrary constants and the sequence  $\{Z_\ell^*: 1 \leq \ell \leq n\}$  is given by

$$Z_\ell^* = \sum_{i=1}^k a_i Z_{i\ell}$$

Hence by the Central Limit Theorem  $n^{-1/2} \sum_{\ell=1}^n Z_\ell^* \rightarrow_D N(0, \sigma^2)$  with

$\sigma^2 = \sum_{i=1}^k \sum_{j=1}^k a_i a_j \text{Cov}(Z_{i\ell}, Z_{j\ell})$ . Also by the Strong Law of Large Numbers,  
 $n^{-1}T_n(t) \xrightarrow{\text{a.s.}} \int_0^t S(y)dy$ . Thus (24) leads to the convergence

$$X_n(t) \xrightarrow{D} N(0, (\int_0^t S(y)dy)^{-2} \sigma^2). \quad (25)$$

Writing  $\underline{a} = (a_1, \dots, a_k)$  and recalling (14) we have shown in (25) that  
 $\underline{a}\{n^{1/2}(\underline{\Gamma}_n(t) - \underline{\chi}(t))\} \xrightarrow{D} N(0, \underline{a} \underline{\Sigma} \underline{a}^T)$ . So since  $\underline{a}$  is an arbitrary vector,  
 the proposition is proven. The Corollary can be established along exactly  
 the same lines.

### 5. Concluding Remarks

In this paper we have dealt with mortality rates evaluated in a life test or clinical trial under a basic competing risks model. The asymptotic multivariate normal distribution that we have obtained for the vector of these mortality rates also provides for inference on the parameters of our model. For instance confidence sets for the  $\underline{\chi}(t)$  can be supplied and tests of hypotheses on  $\underline{\chi}(t)$  obtained. We may also consider the stochastic process  $t \rightarrow n^{1/2}(\underline{\Gamma}_n(t) - \underline{\chi}(t))$ ,  $t \geq 0$  as an element in the function space  $D^k[0, \infty)$  (the  $k$ -fold cartesian product of  $D[0, \infty)$  space of right continuous real functions on  $[0, \infty)$  with left hand limits) equipped with a suitable topology, and thus an invariance principle derived paralleling our Proposition. Furthermore appropriate stopping mechanisms defined in terms of  $\underline{\Gamma}_n(t)$  can be considered as for example the rule  $\tau_n = \inf\{t > 0: \min_{1 \leq i \leq n} \Gamma_{n,i}(t) > a_n\}$ , where the  $a_n$  are some constants.

### Acknowledgements

This research was supported in part by the Biomedical Research Support Grant Program of the National Institutes of Health under BRSG Grant S07-RR07049-14 and by the Office of Naval Research under ONR Contract N00014-79-C-0522.

### References

- Byar, D.P. (1977). Analysis of survival data in heterogeneous populations. Recent Developments in Statistics (editors J.R. Barra et al.) 51-68. North-Holland Publishing Company, Amsterdam.
- Elandt-Johnson, R. (1976). Conditional failure time distributions under competing risk theory with dependent failure times and proportional hazard rates. Scandinavian Actuarial Journal 37-51.
- Gail, M. (1975). A review and critique of some models used in competing risk analysis. Biometrics 31, 209-222.
- Hoel, D.G. (1972). A representation of mortality data by competing risks. Biometrics 28, 475-488.
- Moeschberger, M.L. and David, H.A. (1971). Life tests under competing causes of failure and the theory of competing risks. Biometrics 27, 909-923.
- Peterson, A.V. (1976). Bounds for a joint distribution function with fixed sub-distribution functions: Application to competing risks. Proceedings of the National Academy of Science 73, 11-13.
- Tolley, Dennis H. and Norman, James E. (1979). Time on trial estimates with bivariate risks. Biometrika 66, 285-291.
- Tsiatis, A. (1975). A nonidentifiability aspect of the problem of competing risks. Proceedings of the National Academy of Science 72, 20-22.
- Vaeth, M. (1979). A note on the behaviour of occurrence/exposure rates when the survival distribution is not exponential. Scandinavian Journal of Statistics 6, 77-80.
- Zelen, M. and Dannemiller, M.C. (1961). The robustness of life testing procedures derived from the exponential distribution. Technometrics 3, 29-49.

UNCLASSIFIED

SECURITY CLASSIFICATION OF THIS PAGE (When Data Entered)

REPORT DOCUMENTATION PAGE		READ INSTRUCTIONS BEFORE COMPLETING FORM
1. REPORT NUMBER	2. GOVT ACCESSION NO.	3. RECIPIENT'S CATALOG NUMBER
4. TITLE (and Subtitle) The Asymptotic Distribution of Mortality Rates in Competing Risks Analyses		5. TYPE OF REPORT & PERIOD COVERED
7. AUTHOR(s) Joseph C. Gardiner		6. PERFORMING ORG. REPORT NUMBER RM-405
9. PERFORMING ORGANIZATION NAME AND ADDRESS Department of Statistics and Probability Michigan State University East Lansing, MI 48824		8. CONTRACT OR GRANT NUMBER(s) N00014-79-C-0522/ NIH-BSRG-S07-RR07049-14
11. CONTROLLING OFFICE NAME AND ADDRESS ONR-Statistics & Probability Program (Code 436) Arlington, Virginia 22217		10. PROGRAM ELEMENT, PROJECT, TASK AREA & WORK UNIT NUMBERS
14. MONITORING AGENCY NAME & ADDRESS (if different from Controlling Office)		12. REPORT DATE December 1979
		13. NUMBER OF PAGES .12
		15. SECURITY CLASS. (of this report) UNCLASSIFIED
		15a. DECLASSIFICATION/DOWNGRADING SCHEDULE
16. DISTRIBUTION STATEMENT (of this Report)  APPROVED FOR PUBLIC RELEASE: DISTRIBUTION UNLIMITED.		
17. DISTRIBUTION STATEMENT (of the abstract entered in Block 20, if different from Report)		
18. SUPPLEMENTARY NOTES		
19. KEY WORDS (Continue on reverse side if necessary and identify by block number)  Asymptotic independence, competing risks, mortality rates, multivariate normal distribution, survival analysis		
20. ABSTRACT (Continue on reverse side if necessary and identify by block number)  For a sample of individuals from an animal or human population under observation in a clinical trial or life test, mortality rates are defined for each risk to which the population is exposed. By considering only the crude risk functions and cause-specific failure rates in a basic competing risks model, these mortality rates are shown to have an asymptotic normal distribution. An expression for the asymptotic correlation between a pair of mortality rates is thus obtained and a necessary and sufficient condition for		

DD FORM 1473  
1 JAN 73EDITION OF 1 NOV 65 IS OBSOLETE  
S/N 0102-LF-014-6601


UNCLASSIFIED

SECURITY CLASSIFICATION OF THIS PAGE (When Data Entered)

UNCLASSIFIED

SECURITY CLASSIFICATION OF THIS PAGE (When Data Entered)

20. their asymptotic independence is investigated in some general situations with reference to only the cause-specific failure rates and the survival function of the individuals.



FORM 37 (2-68)

UNCLASSIFIED  
SECURITY CLASSIFICATION OF THIS PAGE (When Data Entered)