

AD-A079 209

ADJUTANT GENERAL'S OFFICE (ARMY) WASHINGTON DC  
CONSTRUCTION OF AN EXPERIMENTAL LONG FORM AND TWO EXPERIMENTAL --ETC(U)  
JUL 61 R G BERKHOUSE, A KATZ, J DEJUNG

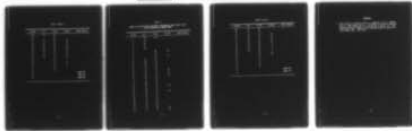
F/G 5/10

UNCLASSIFIED

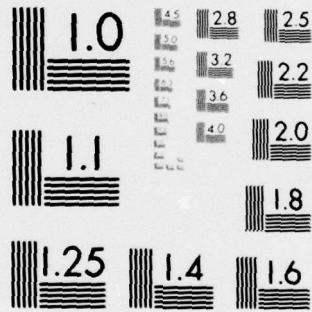
AGO-HFRB-RM-61-9

NL

1 OF 1  
AD-A079209



END  
DATE  
FILMED  
2-80  
DDC



MICROCOPY RESOLUTION TEST CHART  
 NATIONAL BUREAU OF STANDARDS-1963-A

ADA 079209

Continuation of the Department  
Long Range and Test Equipment Development  
of the Classification Act

JULY 1981

DDC FILE COPY

DDC  
RECEIVED  
DEC 20 1981  
A

DISTRIBUTION STATEMENT A  
Approved for public release  
Distribution Unlimited

79 12 18 299

Army Project Number  
2L95-60-001

12 16

Comb Sel b-22

9 Research Memorandum 61-9

6 CONSTRUCTION OF AN EXPERIMENTAL LONG FORM AND TWO EXPERIMENTAL SHORT FORMS OF THE CLASSIFICATION ~~TEST~~ TEST.

10 Rudolph G. Berkhouse, Aaron Katz and John deJung

14 AGO-HFRB-RM-61-9

Submitted by

E. Kenneth Karcher, Jr.  
Chief, Behavioral Evaluation Research Laboratory

Distribution For	
NTIS GRA&I	<input checked="" type="checkbox"/>
DDC TAB	<input type="checkbox"/>
Unannounced	<input type="checkbox"/>
Justification	
By _____	
Distribution/	
Availability Codes	
Dist.	Avail and/or special
A	

11 Jul 1961

~~This document is intended for use only by the Adjutant General, AGTL, and is not available for distribution.~~

003 650 Lm

**CONSTRUCTION OF AN EXPERIMENTAL LONG FORM AND TWO EXPERIMENTAL  
SHORT FORMS OF THE CLASSIFICATION ~~INVENTORY~~ TEST**

Research in progress since 1949, including studies in actual Korean combat, led to the conclusion that effective combat selection is most likely to result from measuring not only skills and abilities, but also such personal factors as motivation, interests, attitudes, and activities. This research resulted in the inclusion of two new measures in the Army Classification Battery: the Classification Inventory (CI), a personality questionnaire which is part of the Infantry Combat Aptitude Area (IN), and the General Information Test (GIT), an interest measure which is part of the Artillery, Armor and Engineer Combat Aptitude Area (AE).

**OBJECTIVE**

The Deputy Chief of Staff for Personnel has directed additional differential screening at Armed Forces Examining Stations of Category IV personnel (percentiles 10 to 30 on AFQT) in order to avoid induction of men who will not achieve a score of 90 on two or more aptitude areas. To meet this requirement in the Combat Aptitude Areas, construction of preliminary short forms of the Classification Inventory and the General Information Test was undertaken. At the same time, an experimental long form of the Classification Inventory was constructed. The experimental long form was designed for eventual use as an alternate to CI-1, since only one operational long form was in use at the time of the study. The present Research Memorandum describes the form and content of the experimental long form and two experimental short forms of the Classification Inventory.

**CLASSIFICATION INVENTORY, EXPERIMENTAL ALTERNATE LONG FORM, CI-2X (PT 3815)**

The experimental long form of the Classification Inventory is, like the operational CI-1 (DA Form 6138), a personality questionnaire consisting of 125 items. The format is the same as that of CI-1 with 15 like-indifferent-dislike items related to occupations, 10 forced-choice pairs concerning activities and interests, 75 yes-no self-description personality and attitude items, and 25 quintets from which the examinee must choose, in some cases the adjective that describes him most, and in other cases the adjective which describes him least.

Source instruments for the operational CI-1 had been administered during the Korean combat studies, and validity coefficients for a combat criterion were available on a large pool of items in addition to those used in CI-1 (King et al., 1952). Some of the experimental instruments were constructed and validated by the Human Factors Research Branch, others by the Human Resources Research Office.

The item composition of CI-2X is shown in Table 1. The 70 overlap items were selected on the basis of the combat validity information. Item pools derived from the Korean combat studies yielded the additional like-indifferent-dislike items, forced-choice pairs, and quintets. Of the 29 non-overlap yes-no items, 18 were selected on the basis of validity information obtained with a combined combat and garrison criterion, and 11 were selected on the basis of validity information and judgment as to suitability for predicting combat potential.

Table 1

COMPOSITION OF CLASSIFICATION INVENTORY EXPERIMENTAL CI-2X  
COMPARED WITH CI-1

Item Type	CI-1	CI-2X	
		Overlap with CI-1	Other Sources
Like-Indifferent-Dislike	15		15
Forced-Choice	10	7	3
Yes-No	75	46	29
Quintets	25	17	8
Totals	<u>125</u>	<u>70</u>	<u>55</u>

Table 2 identifies the 70 overlap items by source and item type.  
 Table 3 identifies the 55 non-overlap items by source and item type.

Table 2

CLASSIFICATION INVENTORY ITEMS COMMON TO CI-2X AND CI-1,  
 IDENTIFIED BY NUMBER, TYPE, AND ORIGINAL SOURCE

Number and Type	Item Number		Original Source	
	CI-2X	CI-1		
7 Forced-Choice Pairs (HFRB)	16	17	<u>PRT 2390</u> 214	<u>PRT 2822</u> 153
	17	18	215	154
	18	20	221	160
	19	21	235	174
	20	23	241	180
	21	24	280	190
	22	25	286	196
26 Yes-No Items (HFRB)	26	56		<u>PRT 2401</u> 347
	27	79		519
	28	35		185
	29	57		392
	30	53		268
	31	86		182
	33	76		372
	41	28		137
	42	62		315
	43	39		214
	44	73		433
	45	74		417
	46	67		324
	47	75		335
48	80		411	

Table 2 (Cont.)

Number and Type	Item Number		Original Source
	CI-2X	CI-1	
			<u>PRT 2401</u>
26 Yes-No Items (HFRB) (Cont.)	49	54	274
	77	45	245
	78	61	269
	79	31	178
	80	64	328
	94	77	515
	96	78	528
	97	55	292
	98	63	341
	99	66	526
	100	58	493
20 Yes-No Items (HumPRO)	34	91	MMPI:392
	35	96	IPP(II): 10
	36	49	MIB:205
	37	95	CPI:109
	38	89	CPI:110
	39	87	CPI: 7
	40	82	Strong:377
	81	72	MMPI:189
	82	65	Strong:267
	83	44	MMPI:111
	84	60	MMPI:251
	85	50	MMPI: 41
	86	46	MMPI:161
87	47	MMPI: 19	

Table 2 (cont.)

Number and Type	Item Number		Original Source	
	CI-2X	CI-1		
20 Yes-No Items (HumPRO) (Cont.)	88	85	Strong: 21	
	89	42	Strong:103	
	90	68	Strong:116	
	91	90	Strong:164	
	92	94	Strong:183	
	93	99	Strong: 63	
17 Quintets (HFRB)	101	118	<u>PRT 2390</u>	<u>PRT 2822</u>
			79	79
	103	101	35	35
	104	102	37	37
	105	103	43	43
	106	104	45	45
	109	105	65	65
	110	106	69	69
	111	107	75	75
	112	108	77	77
	113	109	85	85
	114	110	87	87
	115	111	93	93
	116	112	95	95
	117	114	99	99
	118	117	113	113
	124	125	112	112
125	123	108	108	

Table 3

NON-OVERLAP ITEMS OF CLASSIFICATION INVENTORY EXPERIMENTAL CI-2X  
IDENTIFIED BY NUMBER, TYPE, AND SOURCE

Number and Type	CI-2X Item Number	Source Item Number
15 Like-Indifferent-Dislike Item (Hum RRO)	1	MIB:343
	2	MIB: 72
	3	MIB:101
	4	MIB:376
	5	MIB:287
	6	MIB: 93
	7	MIB: 15
	8	MIB: 79
	9	MIB: 94
	10	MIB:289
	11	MIB:377
	12	Strong: 64
	13	Strong: 75
	14	Strong: 15
	15	MIB:254
3 Forced-Choice Pairs (HFRB)	23	<u>PRT 2390</u> 290
	24	<u>PRT 2822</u> 228 167
	25	225 164
18 Yes-No Items (HFRB)	50	<u>PRT 2401</u> 256
	60	16
	61	44
	62	501
	63	30

Table 3 (Cont.)

Number and Type	CI-2K Item Number	Source Item Number
18 Yes-No Items (HFRB) (Cont.)	64	<u>PRT 2401</u> 101
	65	393
	66	487
	67	406
	68	318
	69	374
	70	369
	71	472
	72	423
	73	33
	74	237
	75	452
	76	41
	11 Yes-No Items (HumRRO and Judgment)	32
51		MMPI:553
52		Strong:232
53		Strong:180
54		CPI: 38
55		CPI:272
56		<u>PRT 2401</u> 455
57		29
58		40
59		336
95	F-F LHI: 48	

Table 3 (Cont.)

Number and Type	CI-2X Item Number	Source Item Number	
		FRT 2390	FRT 2822
8 Quintets (FFRB)	- 102	81	81
	107	53	53
	108	61	61
	119	50	50
	120	66	66
	121	44	44
	122	82	82
	123	94	94

#### CLASSIFICATION INVENTORY, EXPERIMENTAL SHORT FORMS CI-2QX AND CI-3QX

Each of the two experimental short forms of the CI consists of 45 self-description yes-no items. The items were selected on the basis of validity information and with a view toward making the forms equivalent. Table 4 identifies the sources of items selected for CI-2QX and CI-3QX and indicates the amount of overlap between the two short forms and the amount of overlap with the operational and experimental long forms. A total of 14 items are common to CI-1, CI-2X, CI-2QX, and CI-3QX. In addition, 4 items selected from experimental CI-2X appear in both short forms. Table 5 lists the items in Short Form CI-2QX and Table 6 lists those in Short Form CI-3QX with their corresponding source items.

Short Form CI-2QX is included as Section II (items 31-75) of Test Booklet PT 4125. CI-3QX is included as Section II (Items 31-75) of Test Booklet PT 4127. These experimental instruments, along with other experimental booklets designed for use as alternate forms of the Army Qualification Battery, are being administered to 2000 EM (N = 1000 for PT 4125 and 1000 for PT 4127) at ten Armed Forces Examining Stations (Input Quality Task A-12). Administration of the battery started in June 1961, and data collection is expected to be completed by the end of August 1961. Analysis of the data is intended to establish norms, develop conversion tables, and provide information concerning the relationship among the tests of the AQB.

Table 4

SOURCES OF ITEMS FOR THE CLASSIFICATION INVENTORY  
EXPERIMENTAL SHORT FORMS CI-20X AND CI-30X

Source	CI-20X	CI-30X
Non-Overlap Items		
CI-1 only	3	4
CI-2X only	5	5
CI-1 and CI-2X	16	16
Other	3	2
Totals	27	27
Overlap Items <sup>a</sup>		
CI-2X only	4	4
CI-1 and CI-2X	14	14
Totals	18	18

<sup>a</sup>Items appearing in CI-20X and CI-30X.

Table 5

ITEMS OF CLASSIFICATION INVENTORY EXPERIMENTAL SHORT FORM CI-2QX  
WITH CORRESPONDING SOURCE ITEMS

CI-2QX	CI-1	CI-2X	CI-3QX	Other Sources
1	64	80		
2	29			
3	72	81		
4	53	30		
5	87	39	36	
6	66	99		
7	89	38	37	
8		68	39	
9	61	78		
10	90	91		
11	94	92	35	
12	65	82		
13	78	96		
14	67	46	32	
15		71		
16	28	41		
17	62	42		
18	85	88	34	
19	82	40		
20	76	33		
21	36			
22	54	49		
23	74	45	31	
24	97			
25	79	27		
26		65	38	
27	86	31		
28	75	47	33	

Table 5 (Cont.)

CI-2QX	CI-1	CI-2X	CI-3QX	Other Sources
29	77	94		
30		61		
31	49	36	14	
32	44	83	27	
33	91	34	21	
34	45	77	28	
35	80	48	15	
36	73	44	13	
37	39	43	19	
38		66		
39		67	6	
40		75	8	
41		55		
42		32		
43				MMPI:291
44				MMPI:535
45				MMPI:211

Table 6

ITEMS OF CLASSIFICATION INVENTORY EXPERIMENTAL SHORT FORM CI-3QX  
WITH CORRESPONDING SOURCE ITEMS

CI-3QX	CI-1	CI-2X	CI-2QX	Other Sources
1	68	90		
2	92			
3	59			
4	81			
5	43			
6		67	39	
7		73		
8		75	40	
9	42	89		
10	95	37		
11	57	29		
12	63	98		
13	73	44	36	
14	49	36	31	
15	80	48	35	
16	50	85		
17	46	86		
18	96	35		
19	39	43	37	
20	56	26		
21	91	34	33	
22	60	84		
23	99	93		
24	55	97		
25	47	87		
26	58	100		
27	44	83	32	
28	45	77	34	

Table 6 (Cont.)

CI-30X	CI-1	CI-2X	CI-20X	Other Sources
29	35	28		
30	31	79		
31	74	45	23	
32	67	46	14	
33	75	47	28	
34	85	88	18	
35	94	92	11	
36	87	39	5	
37	89	38	7	
38		65	26	
39		68	8	
40		70		
41		53		
42		54		
43		51		
44				MMPI: 393
45				MMPI: 94

#### REFERENCE

1. King, Samuel H., Klieger, Walter A., Campbell, Joel T., Johnson, Cecil D., and Yaukey, David W. Validation of personnel measures against combat performance of enlisted men in Korea. VI. Self-description items. Human Factors Research Branch Technical Research Report 965. July 1952.