

AD-A079 307

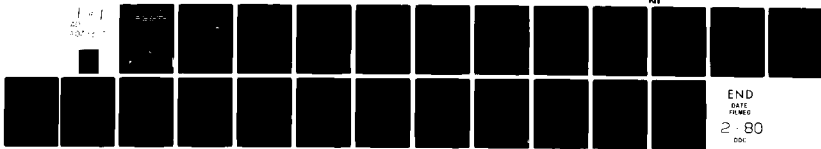
NAVAL RESEARCH LAB WASHINGTON DC
PRELIMINARY REPORT OF NUMERICAL SIMULATION OF INTERMEDIATE WAVE--ETC(U)
DEC 79 M J KESKINEN, S L OSSAKOW
NRL-MR-4133

F/G 4/1

UNCLASSIFIED

MI

1-1
20
300-1-1



END
DATE
FILMED
2-80
DDC

LEVEL II

NAVY RESEARCH LABORATORY REPORT 4888

(12)

Preliminary Report of Numerical Simulations of Intermediate Wavelength ExB Gradient Drift Instability in Ionospheric Plasma Clouds

M. J. KESKINEN AND S. L. OSSAKOW

*Geophysical and Plasma Dynamics Branch
Plasma Physics Division*

AND

P. K. CHATURVEDI

*Berkeley Research Associates
Arlington, Virginia 22209*

ADA 079307

December 7, 1979

DDC
RECEIVED
JAN 14 1980
A

This research was sponsored partially by the Defense Nuclear Agency under subtask S99QAXHC041, work unit 12 and work unit title Ionization Structured Research; and partially by the Office of Naval Research.



NAVAL RESEARCH LABORATORY
Washington, D.C.

Approved for public release; distribution unlimited.

DDC FILE COPY

80 1 10 033

REPORT DOCUMENTATION PAGE		READ INSTRUCTIONS BEFORE COMPLETING FORM
1. REPORT NUMBER NRL Memorandum 4133 ✓	2. GOVT ACCESSION NO.	3. RECIPIENT'S CATALOG NUMBER 9
6. TITLE (and Subtitle) PRELIMINARY REPORT OF NUMERICAL SIMULATION OF INTERMEDIATE WAVELENGTH $E \times B$ GRADIENT DRIFT INSTABILITY IN IONOSPHERIC PLASMA CLOUDS,		4. TYPE OF REPORT & PERIOD COVERED Interim report on a continuing NRL problem
7. AUTHOR(s) M. J. Keskinen*, S. L. Ossakow, P. K. Chaturvedi		5. PERFORMING ORG. REPORT NUMBER
9. PERFORMING ORGANIZATION NAME AND ADDRESS Naval Research Laboratory ✓ Washington, DC 20375		8. CONTRACT OR GRANT NUMBER(s) 14) NRL-MR-4133
11. CONTROLLING OFFICE NAME AND ADDRESS Defense Nuclear Agency, Washington, DC 20305 and Office of Naval Research, Arlington, VA 22217		10. PROGRAM ELEMENT, PROJECT, TASK AREA & WORK UNIT NUMBERS NRL Problems 67H02-27B and 67A03-16B DNA Subtask S99OAXHC041
14. MONITORING AGENCY NAME & ADDRESS (if different from Controlling Office) 10 24		12. REPORT DATE Dec 79 17
		13. NUMBER OF PAGES 23
		15. SECURITY CLASS. (of this report) UNCLASSIFIED
		15a. DECLASSIFICATION/DOWNGRADING SCHEDULE
16. DISTRIBUTION STATEMENT (of this Report) Approved for public release; distribution unlimited.		
17. DISTRIBUTION STATEMENT (of the abstract entered in Block 20, if different from Report)		
18. SUPPLEMENTARY NOTES *NRC-NRL Resident Research Associate †Berkeley Research Associates, Arlington, VA 22209 (Continues)		
19. KEY WORDS (Continue on reverse side if necessary and identify by block number) Ionospheric plasma clouds Nonlinear numerical simulations $E \times B$ gradient drift instability Intermediate wavelengths Nonlinear saturation		
20. ABSTRACT (Continue on reverse side if necessary and identify by block number) Two-dimensional numerical simulations of intermediate wavelength (100-1000m) $E \times B$ gradient-drift instability in local unstable regions of large F region ionospheric plasma clouds have been performed, using an initial one-dimensional (y), cloud geometry, for plasma cloud density gradient scale lengths $L = 3, 6, 10$ km. For conditions typical of 200 km barium releases, we find that linearly unstable modes saturate by nonlinear generation of linearly damped modes along the y-direction (parallel to $E \times B$ drift). In the nonlinear regime, power laws are observed in the need page (Continues)		

18. Supplementary Notes (Continued)

This research was sponsored partially by the Defense Nuclear Agency under subtask S99QAXHCO41, work unit 12 and work unit title Ionization Structured Research; and partially by the Office of Naval Research.

19. Abstract (Continued)

one-dimensional parallel $P(k_y) \propto k_y^{-n_y}$ and perpendicular $P(k_x) \propto k_x^{-n_x}$ power spectra with $n_x \simeq 2-3$ and $n_y \simeq 2-2.5$. These results are compared with recent in situ experimental measurements and theoretical predictions.

PRELIMINARY REPORT OF NUMERICAL SIMULATIONS OF INTERMEDIATE WAVELENGTH $E \times B$ GRADIENT DRIFT INSTABILITY IN IONOSPHERIC PLASMA CLOUDS

INTRODUCTION

Barium cloud injection experiments [Rosenberg, 1971; Davis et al., 1974] have provided much data concerning the dynamical evolution of plasma clouds in the F region ionosphere. The characteristic steepening, elongation, and striation of barium plasma clouds have been explained by applying the $E \times B$ gradient-drift instability [Simon, 1963] to plasma cloud geometries [Haerendel et al., 1967; Linson and Workman, 1970; Volk and Haerendel, 1971; Perkins et al., 1973]. Numerical solution of the fundamental fluid equations modelling the $E \times B$ instability in plasma clouds have reproduced not only the large scale gross observational features of plasma cloud evolution [Zabusky et al., 1973; Lloyd and Haerendel, 1973; Goldman et al., 1974; Doles et al., 1976; Ossakow et al., 1975, 1977] but also the spatial power spectra [Scannapieco et al., 1976] and minimum scale sizes of plasma cloud striations [McDonald et al., 1978]. However, the goal of these numerical simulations was to model the dynamics of the entire plasma cloud and wavelengths less than about a kilometer were not accurately resolved. But barium cloud experiments sponsored by the Defense Nuclear Agency have shown [Baker and Ulwick, 1978; Kelley et al., 1979] that the power spectra of the plasma cloud striations extends to wavelengths on the order of meters to tens of meters. It is of interest to numerically model these intermediate wavelength (100-1000 m) irregularities in order to compare with and supplement experimental observations.

Note: Manuscript submitted October 5, 1979.

In this preliminary report we present a two-dimensional numerical simulation of the intermediate wavelength $\underline{E} \times \underline{B}$ gradient-drift instability applicable to local unstable regions of large F region barium plasma clouds. The results of these simulations will be shown to be consistent with experimental and theoretical studies of striated barium clouds and, in many respects, similar to recent numerical simulations [Keskinen et al., 1979] of the intermediate wavelength collisional Rayleigh-Taylor instability in local regions of the bottomside of the equatorial F region ionosphere.

MODEL EQUATIONS

We wish to model two-dimensional $\underline{E} \times \underline{B}$ gradient-drift processes in local unstable regions of large ionospheric F region plasma clouds. The restriction to large clouds (large Pedersen conductivity compared with that of the background ionosphere) permits both the neglect of the cloud interaction with the background ionosphere (second level) and variations of cloud density and potential along the magnetic field lines. For wavelengths greater than the ion-gyroradius (approximately 10 m for Ba^+ in the twilight F region) a fluid description can be used which equations have been given previously [Perkins et al., 1973; McDonald et al., 1978; Chaturvedi and Ossakow, 1979].

By adopting a Cartesian coordinate system (x,y,z) with the geomagnetic field \underline{B} in the z -direction, the ambient electric field \underline{E}_0 along the x -axis, and ignoring to lowest order electron and ion inertia, we can write after transforming to the $c\underline{E}_0 \times \underline{B} / B^2$ frame

$$\frac{\partial n}{\partial t} - \frac{c}{B} \nabla \varphi_1 \times \hat{z} \cdot \nabla n = \frac{2cT}{eBK_e} \nabla^2 n \quad (1)$$

$$\nabla \cdot n \nabla \varphi_1 + \frac{T}{e} \nabla^2 n = \underline{E}_0 \cdot \nabla n \quad (2)$$

where $n(x,y,t)$ is the plasma cloud ion density, $\varphi_1(x,y,t)$ is the electrostatic potential of the plasma cloud, $\kappa_e^{-1} = \kappa_{en}^{-1} + \kappa_{ei}^{-1}$, $\kappa_{ea} = \Omega_e / \nu_{ea}$, with ν_{en} , ν_{ei} the electron collision frequencies with neutrals and ions, respectively, and $T_e = T_i = T$ is the temperature. All other symbols retain their conventional meaning. By linearizing (1) and (2) and expressing $n = n_0 + n_1$ with $n_1, \varphi_1, \propto \exp [i(k_x x + k_y y) + \gamma_k t]$, $\underline{k} \cdot \underline{B} = 0$, $k L \gg 1$ we find

$$\underline{\gamma}_k = (cE_0/BL)(k_x/k)^2 - (\nu_{en} + \nu_{ei})(k^2 C_s^2) / \Omega_e \Omega_i$$

where $L^{-1} = (1/n_0)(\partial n_0 / \partial y)$, $k^2 = k_x^2 + k_y^2$, $C_s^2 = T/m_i$. We note that the growth rate $\underline{\gamma}_k$ maximizes for modes perpendicular to the density gradient ($k = k_x$) while the modes parallel to the density gradient ($k = k_y$) are damped by cross-field diffusion.

Numerical Simulations

By defining $n'(x,y) = n(x,y)/n_0(y)$, $\varphi_1'(x,y) = \varphi_1(x,y)/BL$, $x' = x/L$, $y' = y/L$, $t' = ct/L$, where $n_0(y)$ will be defined later, equations (1) and (2) can be written in dimensionless form as follows (after dropping primes for clarity)

$$\frac{\partial n}{\partial t} - \left(\frac{\partial \varphi_1}{\partial y} \frac{\partial n}{\partial x} + \frac{\partial \varphi_1}{\partial x} \frac{\partial n}{\partial y} \right) = - \frac{n}{n_0} \frac{\partial n_0}{\partial y} \frac{\partial \varphi_1}{\partial x} + \beta_1 \left(\frac{\partial^2 n}{\partial x^2} + \frac{\partial^2 n}{\partial y^2} + \frac{2}{n_0} \frac{\partial n_0}{\partial y} \frac{\partial n}{\partial y} + \frac{n}{n_0} \frac{\partial^2 n_0}{\partial y^2} \right) \quad (3)$$

$$\frac{\partial^2 \varphi_1}{\partial x^2} + \frac{\partial^2 \varphi_1}{\partial y^2} + \left(\frac{1}{n} \frac{\partial n}{\partial y} + \frac{1}{n_0} \frac{\partial n_0}{\partial y} \right) \frac{\partial \varphi_1}{\partial y} + \frac{1}{n} \frac{\partial n}{\partial x} \frac{\partial \varphi_1}{\partial x} + \beta_3 \left(\frac{\partial^2 n}{\partial x^2} + \frac{\partial^2 n}{\partial y^2} + \frac{2}{n_0} \frac{\partial n_0}{\partial y} \frac{\partial n}{\partial y} + \frac{n}{n_0} \frac{\partial^2 n_0}{\partial y^2} \right) = - \beta_2 \frac{1}{n} \frac{\partial n}{\partial x} \quad (4)$$

where $\beta_1 = 2T/eBK_e L$, $\beta_2 = E_0/B$, $\beta_3 = T/eBL$ are dimensionless constants.

Equations (3) and (4) were solved numerically. The normalized plasma cloud density n/n_0 in (3) was advanced in time using a variable time step flux-corrected predictor-corrector scheme [Zalesak, 1979] which is basically second order in time and fourth order in space. Equation (4) was solved for the cloud potential $\varphi_1(x,y)$ at each time step using a regridded Chebychev relaxation method [McDonald, 1977]. The results to be presented here were obtained using mesh of 64 x 64 grid points with constant spacing $\Delta x = \Delta y = 15$ m. Periodic boundary conditions were imposed on n/n_0 and φ_1 in both the x and y directions. The parameters used in these simulations are typical of 200 km barium releases: $T = 10^3$ °K, $\Omega_e = 9 \times 10^6$ sec⁻¹, Ω_1 (Ba⁺) = 36 sec⁻¹, $B = 0.5$ G, $E_0 = 2$ mV/m, $v_{ei} = 2 \times 10^3$ sec⁻¹, $v_{en} = 150$ sec⁻¹ [Banks and Kockarts, 1973; McDonald et al., 1978].

Three different computer runs were made using different values of the equilibrium plasma cloud density gradient scale length $L = 3, 6, 10$ km where $n_0(y) = N_0 (1 + y/L)$, N_0 constant, is a steady state ($\partial/\partial t = 0$) solution of (1) and (2). The simulations were initialized with a two-dimensional perturbation of the form [Chaturvedi and Ossakow, 1979] $\delta n(x,y,t=0)/n_0 = A_{1,1} \sin k_y y \cos k_x x + A_{2,0} \sin 2k_y y$ with $k_x = k_y = 2\pi/960$ m with $A_{1,1} = 2 \times 10^{-5}$ and $A_{2,0} = 2 \times 10^{-6}$ (where $\delta n \equiv n - n_0$). We will now present the important nonlinear results of these simulations.

Fig. 1a gives an isodensity contour plot of $\delta n(x,y)/n_0$ in the x-y plane at $t = 0$ for $L = 3$ km. The initial contours describe a sequence of enhancements ($\delta n/n_0 > 0$) and depletions ($\delta n/n_0 < 0$) arranged in a checkerboard fashion. Fig. 1b and 1c show the evolution of $\delta n/n_0$ at $t = 1500$ and 1800 sec, respectively. The density fluctuation contours of $\delta n/n_0$ at $t = 2000$ sec are displayed in Fig. 1d where some elongation in the y-direction (ExB) and steepening can be seen. Similar contour development was also observed for the other two plasma cloud density gradient scale lengths $L = 6, 10$ km but on longer time scales.

Figs. 2a-b show representative one-dimensional power spectra both parallel $P(k_y)$ to the ExB drift and perpendicular $P(k_x)$ in the nonlinear late time regime for $L = 6$ km. These power spectra are defined as follows

$$P(k_x) = \int dk_y \left| \delta n(k_x, k_y) / n_0 \right|^2$$

$$P(k_y) = \int dk_x \left| \delta n(k_x, k_y) / n_0 \right|^2$$

In the late time nonlinear state for the three scale lengths $L = 3, 6, 10$ km, $P(k_x) \propto k_x^{-n_x}$ and $P(k_y) \propto k_y^{-n_y}$ with $n_x \approx 2-3$ and $n_y \approx 2-2.5$ for wavelengths $\lambda = 70-960$ m. These spectral indices are consistent with recent in situ experimental measurements [Baker and Ulwick, 1978; Kelley et al., 1979] and analytical studies [Chaturvedi and Ossakow, 1979] of barium cloud striations.

Finally, Fig. 3 presents the time history of modes $A_{1,1}$ and $A_{2,0}$ for $L = 10$ km. Initially the $A_{2,0}$ mode along the ExB (density gradient) direction damps as given by linear theory. As the linearly unstable $A_{1,1}$ increases it nonlinearly triggers the growth of $A_{2,0}$. At late times these modes arrange themselves in approximate agreement with the nonlinear amplitudes predicted by Chaturvedi and Ossakow [1979]. Similar time development of $A_{1,1}$ and $A_{2,0}$ are observed for $L = 3, 6$ km.

SUMMARY

We have performed preliminary numerical simulations of the intermediate wavelength ExB gradient-drift instability in local unstable regions of large F region ionospheric plasma clouds using parameters typical of 200 km barium releases. For barium cloud density gradient scale lengths $L = 3, 6, 10$ km we find that: (1) linear unstable

modes saturate by nonlinear excitation of linearly damped modes along the y direction parallel to \underline{ExB} drift and the initial cloud density gradient; (2) in the nonlinear well developed state elongation along the \underline{ExB} direction is seen; (3) the one-dimensional power spectra $P(k_x) \propto k_x^{-n_x}$ and $P(k_y) \propto k_y^{-n_y}$ with $n_x \approx 2-3$ and $n_y \approx 2-2.5$ for wavelengths $\lambda = 70-960$ m. These results are consistent with recent barium cloud experimental measurements [Baker and Ulwick, 1978; Kelley et al., 1979]; support the nonlinear analytical work of Chaturvedi and Ossakow [1979]; and show furthermore the similarity between the \underline{ExB} gradient drift instability in ionospheric plasma clouds and the collisional Rayleigh-Taylor instability in the equatorial F region ionosphere.

Future studies are planned which include variation of the parameters used in these simulations, addition of inertial effects, and inclusion of the cloud interaction with the background ionosphere (second level).

Acknowledgements

We wish to thank B. E. McDonald for useful discussions. This work was supported by the Defense Nuclear Agency and the Office of Naval Research.

References

- Baker, K.D., and J.C. Ulwick, Measurements of electron density structure in barium clouds, Geophys. Res. Lett., 5, 723, 1978.
- Banks, P.M., and G. Kockarts, *Aeronomy (Part A)*, Academic Press, New York, 1973.
- Chaturvedi, P.K., and S.L. Ossakow, Nonlinear stabilization of the EXB gradient drift instability in ionospheric plasma clouds, J. Geophys. Res., 84, 419, 1979.
- Davis, T.N., G.J. Romick, E.M. Westcott, R.A. Jeffries, D.M. Kerr, and H.M. Peek, "Observations of the Development of Striations in Large Barium Clouds," Planet. Space Sci., 22, 67, 1974.
- Doles, J.J., III, N.J. Zabusky, and F.W. Perkins, Deformation and Striation of Plasma Clouds in the Ionosphere 3. Numerical Simulations of a Multilevel Model with Recombination Chemistry, J. Geophys. Res., 81, 5987, 1976.
- Goldman, S.R., S.L. Ossakow, and D.L. Book, On the nonlinear motion of a small barium cloud in the ionosphere, J. Geophys. Res., 79, 1471, 1974.
- Haerendel, G., R. Lust, and E. Rieger, Motion of artificial ion clouds in the upper atmosphere, Planet Space Sci., 15, 1, 1967.
- Kelley, M.C., K.D. Baker, and J.C. Ulwick, Late time barium cloud striations and their possible relationship to equatorial spread F, J. Geophys. Res., 84, 1898, 1979.

- Keskinen, M.J., S.L. Ossakow, and P.K. Chaturvedi, Preliminary report of numerical simulations of intermediate wavelength collisional Rayleigh-Taylor instability in equatorial spread F, submitted to J. Geophys. Res., 1979.
- Linson, L.M., and J.B. Workman, Formation of striations in ionospheric plasma clouds, J. Geophys. Res., 75, 3211, 1970.
- Lloyd, J.H., and G. Haerendel, Numerical modeling of the drift and deformation of ionospheric plasma clouds and of their interaction with other layers of the ionosphere, J. Geophys. Res., 78, 7389, 1973.
- McDonald, B.E., Explicit chebychev-iterative solution of nonself-adjoint elliptic equations on a vector computer, NRL Memo Report 3541, Nav. Res. Lab., Washington, D.C., June, 1977
- McDonald, B.E., S.L. Ossakow, S.T. Zalesak, and N.J. Zabusky, Determination of minimum scale sizes in plasma cloud striations, Effect of the Ionosphere on Space and Terrestrial Systems, edited by J.M. Goodman, U.S. Government Printing Office, Washington, D.C., 1978.
- Ossakow, S.L., A.J. Scannapieco, S.R. Goldman, D.L. Book, and B.E. McDonald, Theoretical and numerical simulation studies of ionospheric inhomogeneities produced by plasma clouds, Effect of the Ionosphere on Space Systems and Communications, edited by J.M. Goodman, U.S. Government Printing Office, Washington, D.C., 1975.
- Ossakow, S.L., S.T. Zalesak, and N.J. Zabusky, Recent results on cleavage, bifurcation, and cascade mechanisms in ionospheric

- plasma clouds, NRL Memo Report 3579, Nav.Res.Lab., Wash., DC, Aug. 1977.
- Perkins, F.W., N.J. Zabusky, and J.H. Doles III, Deformation and striation of plasma clouds in the ionosphere, 1, J. Geophys. Res., 78, 697, 1973.
- Rosenberg, N.W., Observations of striation formation in a barium ion cloud, J. Geophys. Res., 76, 6856, 1971.
- Scannapieco, A.J., S.L. Ossakow, S.R. Goldman, and J.M. Pierre, Plasma cloud late time striation spectra, J. Geophys. Res., 81, 6037, 1976.
- Simon, A., Instability of a partially ionized plasma in crossed electric and magnetic fields, Phys. Fluids, 6, 382, 1963.
- Völk, H.J., and G. Haerendel, Striations in ionospheric ion clouds, 1, J. Geophys. Res., 76, 4541, 1971.
- Zabusky, N.J., J.H. Doles III, and F.W. Perkins, Deformation and striation of plasma clouds in the ionosphere. 2. Numerical simulation of a nonlinear two-dimensional model, J. Geophys. Res., 78, 711, 1973.
- Zalesak, S.T., Fully multidimensional flux-corrected transport algorithms for fluids, J. Comp. Phys., 31, 335, 1979.

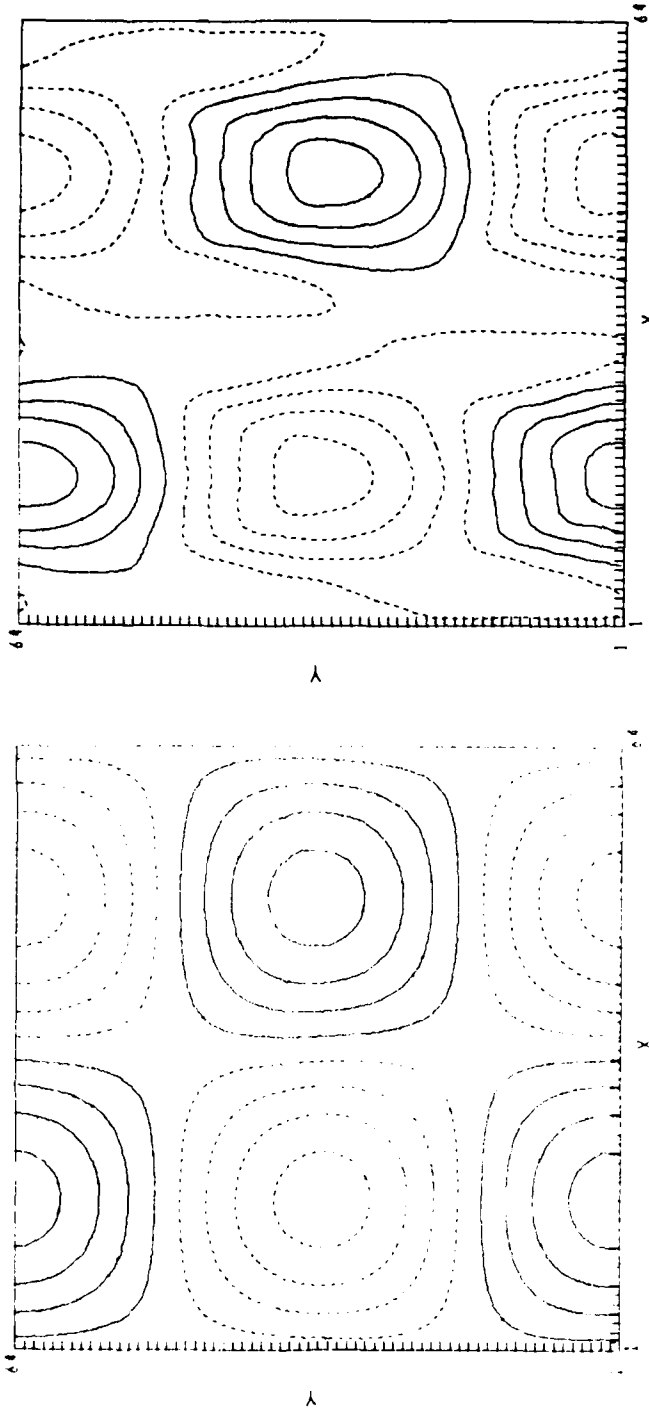


Fig. 1a

Fig. 1b

Fig. 1 - Isodensity contours of $\delta n/n$ for $L = 3$ km at (a) $t = 0$, (b) $t = 1500$, (c) $t = 1800$, and (d) $t = 2000$ sec. Solid lines denote $\delta n/n > 0$; dashed lines denote $\delta n/n < 0$. All contours are evenly spaced with the y axis vertical (parallel to $\vec{E} \times \vec{B}$ and initial cloud density gradient) and x axis horizontal (perpendicular to $\vec{E} \times \vec{B}$). The tick marks represent grid point locations.

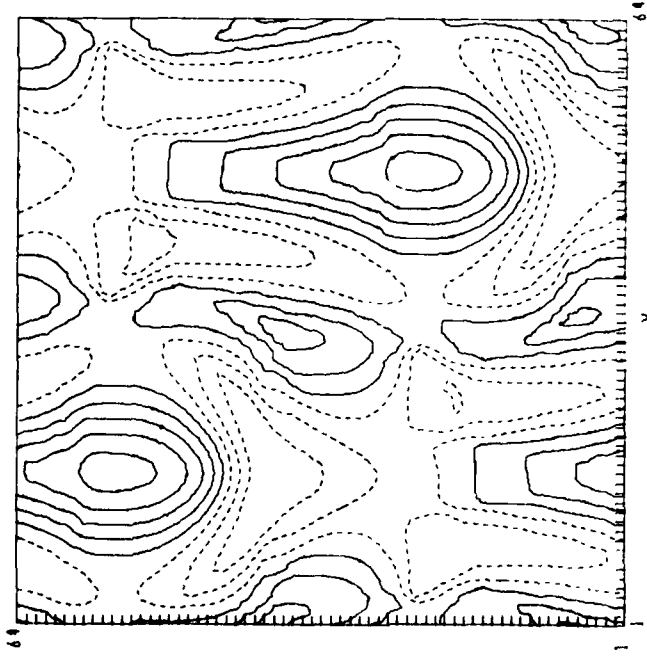


Fig. 1c

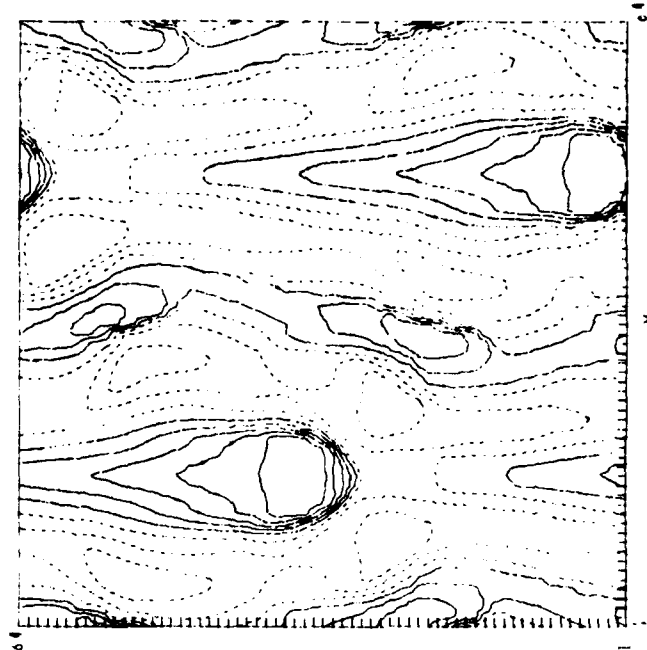


Fig. 1d

Fig. 1 - Isodensity contours of $\delta n/n_0$ for $L = 3$ km at (a) $t = 0$, (b) $t = 1500$, (c) $t = 1800$, and (d) $t = 2000$ sec. Solid lines denote $\delta n/n_0 > 0$; dashed lines denote $\delta n/n_0 < 0$. All contours are evenly spaced with the y axis vertical (parallel to $E \times B$ and initial cloud density gradient) and x axis horizontal (perpendicular to $E \times B$). The tick marks represent grid point locations.

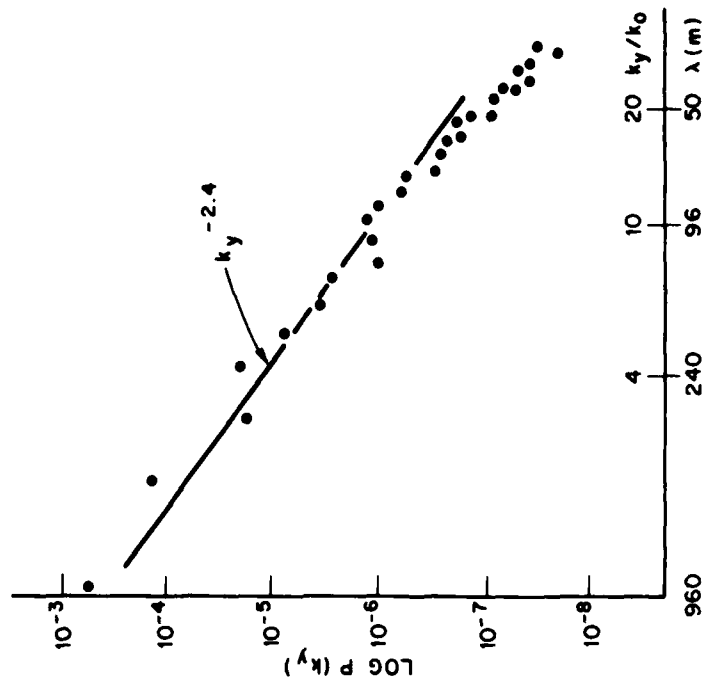


Fig. 2a

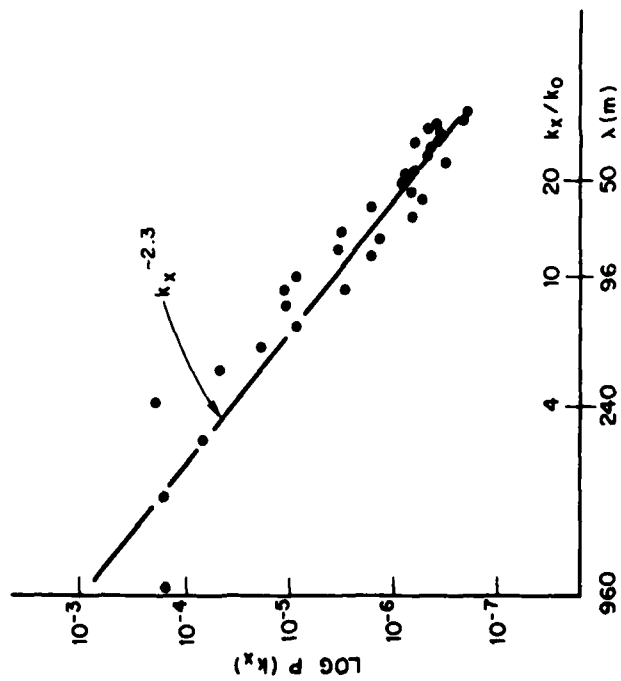


Fig. 2b

Fig. 2 - One dimensional perpendicular (a) $P(k_x)$ and parallel (b) $P(k_y)$ power spectra vs k_x and k_y , respectively, for $L = 6$ km in late time regime ($t = 3150$ sec.). Solid line is least squares fit to results from numerical simulation (dots) and $k_0 = 2\pi/960$ m is the fundamental wave number.

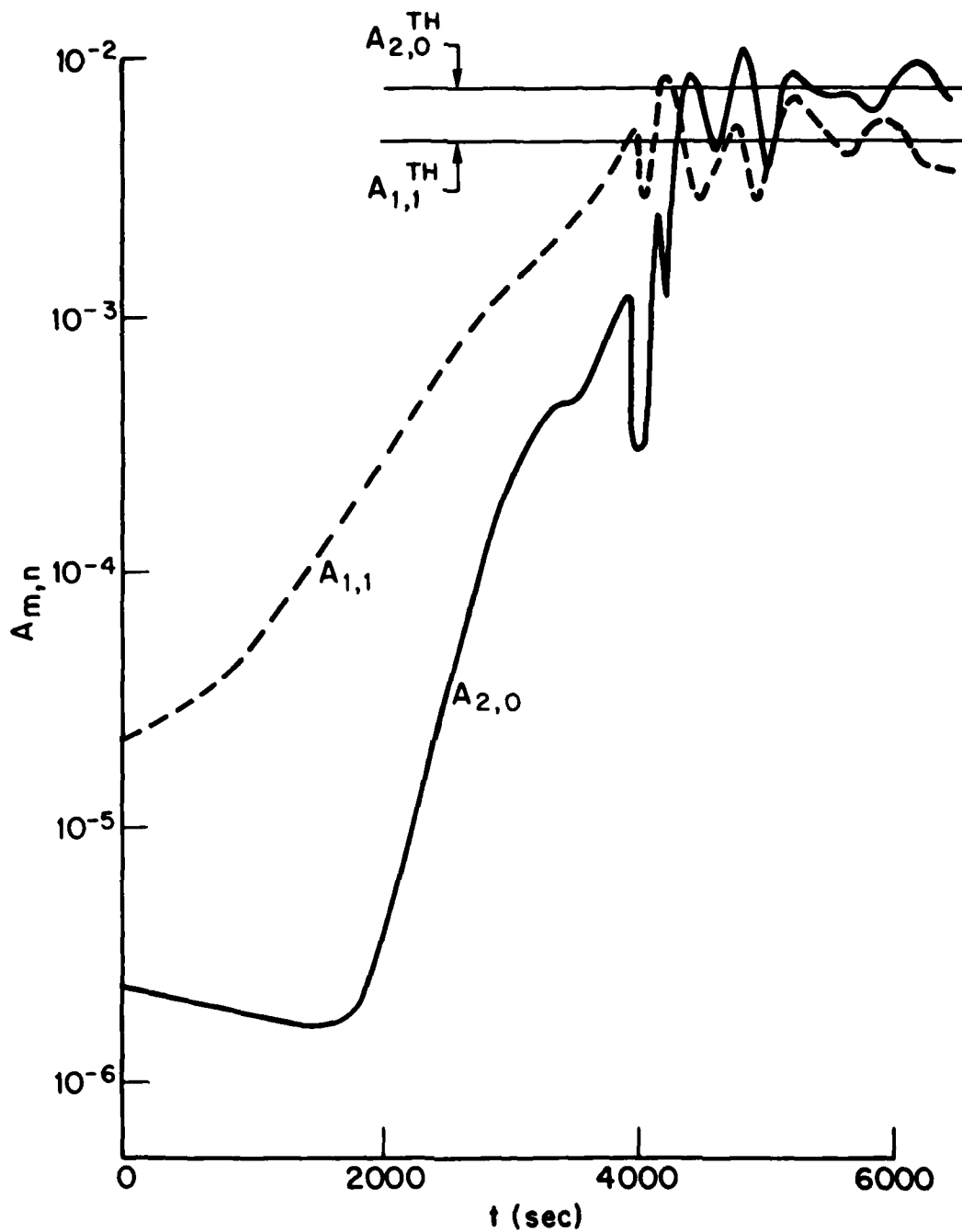


Fig. 3 — Time history of mode amplitudes $A_{2,0}$ (along initial cloud density gradient) and $A_{1,1}$ for $L = 10$ km where $A_{m,n} = A_{mk_{oy},nk_{ox}}$ and $k_{ox} = k_{oy} = 2\pi/960$ m. The horizontal solid lines are the steady state amplitudes $A_{1,1}^{TH}$ and $A_{2,0}^{TH}$ from the theory of Chaturvedi and Ossakow [1979].

DISTRIBUTION LIST

DEPARTMENT OF DEFENSE

ASSISTANT SECRETARY OF DEFENSE
 COMM, CMD, CONT & INTELL
 WASHINGTON, D.C. 20301
 O1CY ATTN J. BABCOCK
 O1CY ATTN M. EPSTEIN

ASSISTANT TO THE SECRETARY OF DEFENSE
 ATOMIC ENERGY
 WASHINGTON, D.C. 20301
 O1CY ATTN EXECUTIVE ASSISTANT

DIRECTOR
 COMMAND CONTROL TECHNICAL CENTER
 PENTAGON RM BE 685
 WASHINGTON, D.C. 20301
 O1CY ATTN C-650
 O1CY ATTN C-312 R. MASON

DIRECTOR
 DEFENSE ADVANCED RSCH PROJ AGENCY
 ARCHITECT BUILDING
 1400 WILSON BLVD.
 ARLINGTON, VA. 22209
 O1CY ATTN NUCLEAR MONITORING RESEARCH
 O1CY ATTN STRATEGIC TECH OFFICE

DEFENSE COMMUNICATION ENGINEER CENTER
 1860 WIEHLE AVENUE
 RESTON, VA. 22090
 O1CY ATTN CODE R820
 O1CY ATTN CODE R410 JAMES W. MCLEAN
 O1CY ATTN CODE R720 J. WORTHINGTON

DIRECTOR
 DEFENSE COMMUNICATIONS AGENCY
 WASHINGTON, D.C. 20305
 (ADR ONDI: ATTN CODE 240 FOR)

O1CY ATTN CODE 101B

DEFENSE DOCUMENTATION CENTER
 CAMERON STATION
 ALEXANDRIA, VA. 22314
 (12 COPIES IF OPEN PUBLICATION, OTHERWISE 2 COPIES)
 12CY ATTN TC

DIRECTOR
 DEFENSE INTELLIGENCE AGENCY
 WASHINGTON, D.C. 20301
 O1CY ATTN DT-1B
 O1CY ATTN DB-4C E. O'FARRELL
 O1CY ATTN DIAAP A. WISE
 O1CY ATTN DIAST-5
 O1CY ATTN DT-1B2 R. MORTON
 O1CY ATTN HQ-TR J. STEWART
 O1CY ATTN W. WITTIG DC-7D

DIRECTOR
 DEFENSE NUCLEAR AGENCY
 WASHINGTON, D.C. 20305
 O1CY ATTN STVL
 O4CY ATTN TITL
 O1CY ATTN DDST
 O3CY ATTN RAAE

COMMANDER
 FIELD COMMAND
 DEFENSE NUCLEAR AGENCY
 KIRTLAND AFB, NM 87115
 O1CY ATTN FCPR

DIRECTOR
 INTERSERVICE NUCLEAR WEAPONS SCHOOL
 KIRTLAND AFB, NM 87115
 O1CY ATTN DOCUMENT CONTROL

JOINT CHIEFS OF STAFF
 WASHINGTON, D.C. 20301
 O1CY ATTN J-3 WPMCCS EVALUATION OFFICE

DIRECTOR
 JOINT STRAT TGT PLANNING STAFF
 OFFUTT AFB
 OMAHA, NB 68113
 O1CY ATTN JLTW-2
 O1CY ATTN JPST G. GOETZ

CHIEF
 LIVERMORE DIVISION FLD COMMAND DNA
 DEPARTMENT OF DEFENSE
 LAWRENCE LIVERMORE LABORATORY
 P. O. BOX 808
 LIVERMORE, CA 94550
 O1CY ATTN FCPRL

DIRECTOR
 NATIONAL SECURITY AGENCY
 DEPARTMENT OF DEFENSE
 FT. GEORGE G. MEADE, MD 20755
 O1CY ATTN JOHN SKILLMAN R52
 O1CY ATTN FRANK LEONARD
 O1CY ATTN W14 PAT CLARK
 O1CY ATTN OLIVER H. BARTLETT W32
 O1CY ATTN R5

COMMANDANT
 NATO SCHOOL (SHAPE)
 APO NEW YORK 09172
 O1CY ATTN U.S. DOCUMENTS OFFICER

UNDER SECY OF DEF FOR RSCH & ENGRG
 DEPARTMENT OF DEFENSE
 WASHINGTON, D.C. 20301
 O1CY ATTN STRATEGIC & SPACE SYSTEMS (OS)

WPMCCS SYSTEM ENGINEERING ORG
 WASHINGTON, D.C. 20305
 O1CY ATTN R. CRAWFORD

COMMANDER/DIRECTOR
 ATMOSPHERIC SCIENCES LABORATORY
 U.S. ARMY ELECTRONICS COMMAND
 WHITE SANDS MISSILE RANGE, NM 88002
 O1CY ATTN DELAS-EO F. NILES

DIRECTOR
 BMD ADVANCED TECH CTR
 HUNTSVILLE OFFICE
 P. O. BOX 1500
 HUNTSVILLE, AL 35807
 O1CY ATTN ATC-T MELVIN T. CAPPS
 O1CY ATTN ATC-J W. DAVIES
 O1CY ATTN ATC-R DON RUSS

PROGRAM MANAGER
 BMD PROGRAM OFFICE
 5001 EISENHOWER AVENUE
 ALEXANDRIA, VA 22333
 O1CY ATTN DACS-BMT J. SHEA

CHIEF C-E SERVICES DIVISION
 U.S. ARMY COMMUNICATIONS CMD
 PENTAGON RM 1B269
 WASHINGTON, D.C. 20310
 O1CY ATTN C-E-SERVICES DIVISION

COMMANDER
 FRADCOM TECHNICAL SUPPORT ACTIVITY
 DEPARTMENT OF THE ARMY
 FORT MONMOUTH, N.J. 07703
 O1CY ATTN DRSEL-NL-RD M. BENNET
 O1CY ATTN DRSEL-PL-ENV M. BOMKE
 O1CY ATTN J. E. QUIGLEY

COMMANDER
HARRY DIAMOND LABORATORIES
DEPARTMENT OF THE ARMY
2800 POWDER MILL ROAD
ADELPHI, MD 20783
(CNMCI-INNER ENVELOPE: ATTN: DELMD-RBM)
01CY ATTN DELMD-TI M. WEINER
01CY ATTN DELMD-RB R. WILLIAMS
01CY ATTN DELMD-NP F. WIMENITZ
01CY ATTN DELMD-NP C. MOAZED

COMMANDER
U.S. ARMY COMM-ELEC ENGRG INSTAL AGY
FT. HUACHUCA, AZ 85613
01CY ATTN CCC-EMEO GEORGE LANE

COMMANDER
U.S. ARMY FOREIGN SCIENCE & TECH CTR
220 7TH STREET, NE
CHARLOTTESVILLE, VA 22901
01CY ATTN DRXST-SD
01CY ATTN R. JONES

COMMANDER
U.S. ARMY MATERIEL DEV & READINESS CMD
5001 EISENHOWER AVENUE
ALEXANDRIA, VA 22333
01CY ATTN DRCLDC J. A. BENDER

COMMANDER
U.S. ARMY NUCLEAR AND CHEMICAL AGENCY
7500 BACKLICK ROAD
BLDG 2073
SPRINGFIELD, VA 22150
01CY ATTN LIBRARY

DIRECTOR
U.S. ARMY BALLISTIC RESEARCH LABS
ABERDEEN PROVING GROUND, MD 21005
01CY ATTN TECH LIB EDWARD BAICY

COMMANDER
U.S. ARMY SATCOM AGENCY
FT. MONMOUTH, NJ 07703
01CY ATTN DOCUMENT CONTROL

COMMANDER
U.S. ARMY MISSILE INTELLIGENCE AGENCY
REDSTONE ARSENAL, AL 35809
01CY ATTN JIM GAMBLE

DIRECTOR
U.S. ARMY TRADOC SYSTEMS ANALYSIS ACTIVITY
WHITE SANDS MISSILE RANGE, NM 88002
01CY ATTN ATAA-SA
01CY ATTN TCC/P. PAYAN JR.
01CY ATTN ATAA-TAC LTC J. HESSE

COMMANDER
NAVAL ELECTRONIC SYSTEMS COMMAND
WASHINGTON, D.C. 20360
01CY ATTN NAVALEX 034 T. HUGHES
01CY ATTN PME 117
01CY ATTN PME 117-T
01CY ATTN CODE 5011

COMMANDING OFFICER
NAVAL INTELLIGENCE SUPPORT CTR
4301 SUITLAND ROAD, BLDG. 5
WASHINGTON, D.C. 20390
01CY ATTN MR. DUBBIN STIC 12
01CY ATTN NISC-50
01CY ATTN CODE 5404 J. GALET

COMMANDER
NAVAL SURFACE WEAPONS CENTER
DANLIGREN LABORATORY
DANLIGREN, VA 22448
01CY ATTN CODE DF-14 R. BUTLER

COMMANDING OFFICER
NAVY SPACE SYSTEMS ACTIVITY
P.O. BOX 92960
WORLDWAY POSTAL CENTER
LOS ANGELES, CA. 90009
01CY ATTN CODE 52

OFFICE OF NAVAL RESEARCH
ARLINGTON, VA 22217
01CY ATTN CODE 465
01CY ATTN CODE 461
01CY ATTN CODE 402
01CY ATTN CODE 420
01CY ATTN CODE 421

COMMANDER
AEROSPACE DEFENSE COMMAND/DC
DEPARTMENT OF THE AIR FORCE
ENT AFB, CO 80912
01CY ATTN DC MR. LONG

COMMANDER
AEROSPACE DEFENSE COMMAND/XPD
DEPARTMENT OF THE AIR FORCE
ENT AFB, CO 80912
01CY ATTN XPDQQ
01CY ATTN XP

AIR FORCE GEOPHYSICS LABORATORY
HANSCOM AFB, MA 01731
01CY ATTN OPR HAROLD GARDNER
01CY ATTN OPR-1 JAMES C. ULWICK
01CY ATTN LKB KENNETH S. W. CHAMPION
01CY ATTN OPR ALVA T. STAIR
01CY ATTN PHP JULES AARONS
01CY ATTN PHD JURGEN BUCHAU
01CY ATTN PHD JOHN P. MULLEN

AF WEAPONS LABORATORY
KIRTLAND AFB, NM 87117
01CY ATTN SUL
01CY ATTN CA ARTHUR H. GUENTHER
01CY ATTN DYC CAPT J. BARRY
01CY ATTN DYC JOHN M. KAMM
01CY ATTN DYT CAPT MARK A. FRY
01CY ATTN DES MAJ GARY GANONG
01CY ATTN DYC J. JANNI

AFTAC
PATRICK AFB, FL 32925
01CY ATTN TF/MAJ WILEY
01CY ATTN TN

AIR FORCE AVIONICS LABORATORY
WRIGHT-PATTERSON AFB, OH 45433
01CY ATTN AAD WADE HUNT
01CY ATTN AAD ALLEN JOHNSON

DEPUTY CHIEF OF STAFF
RESEARCH, DEVELOPMENT, & ACQ
DEPARTMENT OF THE AIR FORCE
WASHINGTON, D.C. 20330
01CY ATTN AFRDQ

HEADQUARTERS
ELECTRONIC SYSTEMS DIVISION/XR
DEPARTMENT OF THE AIR FORCE
HANSCOM AFB, MA 01731
01CY ATTN XR J. DEAS

HEADQUARTERS
ELECTRONIC SYSTEMS DIVISION/YSEA
DEPARTMENT OF THE AIR FORCE
HANSCOM AFB, MA 01731
01CY ATTN YSEA

GENERAL ELECTRIC TECH SERVICES CO., INC.
HMES
COURT STREET
SYRACUSE, NY 13201
OICY ATTN G. MILLMAN

GENERAL RESEARCH CORPORATION
SANTA BARBARA DIVISION
P. O. BOX 6770
SANTA BARBARA, CA 93111
OICY ATTN JOHN ISE JR
OICY ATTN JOEL GARBARINO

GEOPHYSICAL INSTITUTE
UNIVERSITY OF ALASKA
FAIRBANKS, AK 99701
(ALL CLASS ATTN: SECURITY OFFICER)
OICY ATTN T. N. DAVIS (UNCL ONLY)
OICY ATTN NEAL BROWN (UNCL ONLY)
OICY ATTN TECHNICAL LIBRARY

GTE SYLVANIA, INC.
ELECTRONICS SYSTEMS GRP-EASTERN DIV
77 A STREET
NEEDHAM, MA 02194
OICY ATTN MARSHAL CROSS

ILLINOIS, UNIVERSITY OF
DEPARTMENT OF ELECTRICAL ENGINEERING
URBANA, IL 61803
OICY ATTN K. YEH

ILLINOIS, UNIVERSITY OF
107 COBLE MALL
801 S. WRIGHT STREET
URBANA, IL 60680
(ALL CORRES ATTN SECURITY SUPERVISOR FOR)
OICY ATTN K. YEH

INSTITUTE FOR DEFENSE ANALYSES
400 ARMY-NAVY DRIVE
ARLINGTON, VA 22202
OICY ATTN J. M. AEIN
OICY ATTN ERNEST BAUER
OICY ATTN HANS WOLFHARD
OICY ATTN JOEL BENGSTON

HSS, INC.
2 ALFRED CIRCLE
BEDFORD, MA 01730
OICY ATTN DONALD HANSEN

INTL TEL & TELEGRAPH CORPORATION
500 WASHINGTON AVENUE
NUTLEY, NJ 07110
OICY ATTN TECHNICAL LIBRARY

JAYCOR
1401 CAMINO DEL MAR
DEL MAR, CA 92014
OICY ATTN S. R. GOLDMAN

JOHNS HOPKINS UNIVERSITY
APPLIED PHYSICS LABORATORY
JOHNS HOPKINS ROAD
LAUREL, MD 20810
OICY ATTN DOCUMENT LIBRARIAN
OICY ATTN THOMAS POTEHRA
OICY ATTN JOHN DASSOULAS

LOOKMEED MISSILES & SPACE CO INC
P. O. BOX 504
SUNNYVALE, CA 94088
OICY ATTN DEPT 60-12
OICY ATTN D. R. CHURCHILL

LOOKMEED MISSILES AND SPACE CO INC
3251 HANOVER STREET
PALO ALTO, CA 94304
OICY ATTN MARTIN WALT DEPT 52-10
OICY ATTN RICHARD G. JOHNSON DEPT 52-12
OICY ATTN W. L. IMHOFF DEPT 52-12

KAMAN SCIENCES CORP
P. O. BOX 7463
COLORADO SPRINGS, CO 80933
OICY ATTN T. MEAGHER

LINKABIT CORP
10453 ROSELLE
SAN DIEGO, CA 92121
OICY ATTN IRWIN JACOBS

M.I.T. LINCOLN LABORATORY
P. O. BOX 73
LEXINGTON, MA 02173
OICY ATTN DAVID M. TOWLE
OICY ATTN P. WALDRON
OICY ATTN L. LOUGHLIN
OICY ATTN D. CLARK

MARTIN MARIETTA CORP
ORLANDO DIVISION
P. O. BOX 5837
ORLANDO, FL 32805
OICY ATTN R. HEFFNER

MCDONNELL DOUGLAS CORPORATION
5301 BOLSA AVENUE
HUNTINGTON BEACH, CA 92647
OICY ATTN N. HARRIS
OICY ATTN J. MOULE
OICY ATTN GEORGE MROZ
OICY ATTN W. OLSON
OICY ATTN R. W. HALPRIN
OICY ATTN TECHNICAL LIBRARY SERVICES

MISSION RESEARCH CORPORATION
735 STATE STREET
SANTA BARBARA, CA 93101
OICY ATTN P. FISCHER
OICY ATTN W. F. CREVIER
OICY ATTN STEVEN L. GUTSCHE
OICY ATTN D. SAPPENFIELD
OICY ATTN R. BOGUSCH
OICY ATTN R. HENDRICK
OICY ATTN RALPH KILB
OICY ATTN DAVE SOHLE
OICY ATTN F. FAJEN
OICY ATTN M. SCHEIBE
OICY ATTN CONRAD L. LONGMIRE
OICY ATTN WARREN A. SCHLUETER

MITRE CORPORATION, THE
P. O. BOX 208
BEDFORD, MA 01730
OICY ATTN JOHN MORGANSTERN
OICY ATTN G. HARDING
OICY ATTN C. E. CALLAHAN

MITRE CORP
WESTGATE RESEARCH PARK
1820 DOLLY MADISON BLVD
MCLEAN, VA 22101
OICY ATTN W. HALL
OICY ATTN W. FOSTER

PACIFIC-SIERRA RESEARCH CORP
1456 CLOVERFIELD BLVD.
SANTA MONICA, CA 90404
OICY ATTN E. C. FIELD JR

PENNSYLVANIA STATE UNIVERSITY
IONOSPHERE RESEARCH LAB
318 ELECTRICAL ENGINEERING EAST
UNIVERSITY PARK, PA 16802
(NO CLASSIFIED TO THIS ADDRESS)
OICY ATTN IONOSPHERIC RESEARCH LAB

COMMANDER
NAVAL OCEAN SYSTEMS CENTER
SAN DIEGO, CA 92152
03CY ATTN CODE 532 W. MOLER
01CY ATTN CODE 0230 C. BAGGETT
01CY ATTN CODE 81 R. EASTMAN

DIRECTOR
NAVAL RESEARCH LABORATORY
WASHINGTON, D.C. 20375
01CY ATTN CODE 6700 TIMOTHY P. COFFEY
(25 CYS IF UNCLASS, 1 CY IF CLASS)
01CY ATTN CODE 6701 JACK D. BROWN
01CY ATTN CODE 6780 BRANCH HEAD (150 CYS
IF UNCLASS, 1 CY IF CLASS)
01CY ATTN CODE 7500 HQ COMM DIR BRUCE WALD
01CY ATTN CODE 7550 J. DAVIS
01CY ATTN CODE 7580
01CY ATTN CODE 7551
01CY ATTN CODE 7555
01CY ATTN CODE 6730 E. MCLEAN
01CY ATTN CODE 7127 C. JOHNSON

COMMANDER
NAVAL SEA SYSTEMS COMMAND
WASHINGTON, D.C. 20362
01CY ATTN CAPT R. PITKIN

COMMANDER
NAVAL SPACE SURVEILLANCE SYSTEM
DAMLGREN, VA 22448
01CY ATTN CAPT J. H. BURTON

OFFICER-IN-CHARGE
NAVAL SURFACE WEAPONS CENTER
WHITE OAK, SILVER SPRING, MD 20910
01CY ATTN CODE F31

DIRECTOR
STRATEGIC SYSTEMS PROJECT OFFICE
DEPARTMENT OF THE NAVY
WASHINGTON, D.C. 20376
01CY ATTN NSP-2141
01CY ATTN NSSP-2722 FRED WIMBERLY

NAVAL SPACE SYSTEM ACTIVITY
P. O. BOX 92960
WORLDWAY POSTAL CENTER
LOS ANGELES, CALIF. 90009
01CY ATTN A. B. MAZZARD

HEADQUARTERS
ELECTRONIC SYSTEMS DIVISION/DC
DEPARTMENT OF THE AIR FORCE
HANSCOM AFB, MA 01731
01CY ATTN DOCX MAJ J. C. CLARK

COMMANDER
FOREIGN TECHNOLOGY DIVISION, AFSC
WRIGHT-PATTERSON AFB, OH 45433
01CY ATTN NICD LIBRARY
01CY ATTN ETD P. B. BALLARD

COMMANDER
ROME AIR DEVELOPMENT CENTER, AFSC
GRIFFISS AFB, NY 13441
01CY ATTN DOC LIBRARY/TSLD
01CY ATTN UCSE V. COYNE

SAMSO/SZ
POST OFFICE BOX 92960
WORLDWAY POSTAL CENTER
LOS ANGELES, CA 90009
(SPACE DEFENSE SYSTEMS)
01CY ATTN SZJ

STRATEGIC AIR COMMAND/XPFS
OFFUTT AFB, NB 68113
01CY ATTN XPFS MAJ B. STEPHAN
01CY ATTN ADWATE MAJ BRUCE BAUER
01CY ATTN MRT
01CY ATTN DOK CHIEF SCIENTIST

SAMSO/YA
P. O. BOX 92960
WORLDWAY POSTAL CENTER
LOS ANGELES, CA 90009
01CY ATTN YAT CAPT L. BLACKWELDER

SAMSO/SK
P. O. BOX 92960
WORLDWAY POSTAL CENTER
LOS ANGELES, CA 90009
01CY ATTN SKA (SPACE COMM SYSTEMS) M. CLAVIN

SAMSO/MN
NORTON AFB, CA 92409
(MINUTEMAN)
01CY ATTN MNML LTC KENNEDY

COMMANDER
ROME AIR DEVELOPMENT CENTER, AFSC
HANSCOM AFB, MA 01731
01CY ATTN EEP A. LORENTZEN

DEPARTMENT OF ENERGY

DEPARTMENT OF ENERGY
ALBUQUERQUE OPERATIONS OFFICE
P. O. BOX 5400
ALBUQUERQUE, NM 87115
01CY ATTN DOC CON FOR D. SHERWOOD

DEPARTMENT OF ENERGY
LIBRARY ROOM G-042
WASHINGTON, D.C. 20545
01CY ATTN DOC CON FOR A. LABOWITZ

EG&G, INC.
LOS ALAMOS DIVISION
P. O. BOX 809
LOS ALAMOS, NM 85544
01CY ATTN DOC CON FOR J. BREEDLOVE

UNIVERSITY OF CALIFORNIA
LAWRENCE LIVERMORE LABORATORY
P. O. BOX 808
LIVERMORE, CA 94550
01CY ATTN DOC CON FOR TECH INFO DEPT
01CY ATTN DOC CON FOR L-389 R. OTT
01CY ATTN DOC CON FOR L-31 R. HAGER
01CY ATTN DOC CON FOR L-46 F. SEWARD

LOS ALAMOS SCIENTIFIC LABORATORY
P. O. BOX 1663
LOS ALAMOS, NM 87545
01CY ATTN DOC CON FOR J. WOLCOTT
01CY ATTN DOC CON FOR R. F. TASCHER
01CY ATTN DOC CON FOR E. JONES
01CY ATTN DOC CON FOR J. MALIK
01CY ATTN DOC CON FOR R. JEFFRIES
01CY ATTN DOC CON FOR J. ZINN
01CY ATTN DOC CON FOR P. KEATON
01CY ATTN DOC CON FOR D. WESTERVELT

SANDIA LABORATORIES
P. O. BOX 5800
ALBUQUERQUE, NM 87115
01CY ATTN DOC CON FOR J. MARTIN
01CY ATTN DOC CON FOR W. BROWN
01CY ATTN DOC CON FOR A. THORNBOUGH
01CY ATTN DOC CON FOR T. WRIGHT
01CY ATTN DOC CON FOR D. DAMLGREN
01CY ATTN DOC CON FOR 3141
01CY ATTN DOC CON FOR SPACE PROJECT DIV

SANDIA LABORATORIES
LIVERMORE LABORATORY
P. O. BOX 969
LIVERMORE, CA 94550
OICY ATTN JOC CON FOR B. MURPHEY
OICY ATTN JOC CON FOR T. COOK

OFFICE OF MILITARY APPLICATION
DEPARTMENT OF ENERGY
WASHINGTON, D.C. 20545
OICY ATTN JOC CON FOR J. GALE

OTHER GOVERNMENT

CENTRAL INTELLIGENCE AGENCY
ATTN RD/SI, RM 5G48, HQ BLDG
WASHINGTON, D.C. 20505
OICY ATTN OSI/PSID RM 5F 19

DEPARTMENT OF COMMERCE
NATIONAL BUREAU OF STANDARDS
WASHINGTON, D.C. 20234
(ALL CORRES: ATTN SEC OFFICER FOR)
OICY ATTN R. MOORE

INSTITUTE FOR TELECOM SCIENCES
NATIONAL TELECOMMUNICATIONS & INFO ADMIN
BOULDER, CO 80303
OICY ATTN A. JEAN (UNCLASS ONLY)
OICY ATTN W. UTLAUT
OICY ATTN D. CROMBIE
OICY ATTN L. BERRY

NATIONAL OCEANIC & ATMOSPHERIC ADMIN
ENVIRONMENTAL RESEARCH LABORATORIES
DEPARTMENT OF COMMERCE
BOULDER, CO 80302
OICY ATTN R. GRUBB
OICY ATTN AERONOMY LAB G. REID

AEROSPACE CORPORATION
P. O. BOX 92957
LOS ANGELES, CA 90009
OICY ATTN I. GARFUNKEL
OICY ATTN T. SALMI
OICY ATTN V. JOSEPHSON
OICY ATTN S. BOWER
OICY ATTN N. STOCKWELL
OICY ATTN D. OLSEN
OICY ATTN J. CARTER
OICY ATTN F. MORSE
OICY ATTN SHFA FOR PWW

ANALYTICAL SYSTEMS ENGINEERING CORP
5 OLD CONCORD ROAD
BURLINGTON, MA 01803
OICY ATTN RADIO SCIENCES

BERKELEY RESEARCH ASSOCIATES, INC.
P. O. BOX 983
BERKELEY, CA 94701
OICY ATTN J. WORKMAN

BOEING COMPANY, THE
P. O. BOX 3707
SEATTLE, WA 98124
OICY ATTN G. KEISTER
OICY ATTN D. MURRAY
OICY ATTN G. HALL
OICY ATTN J. KENNEY

CALIFORNIA AT SAN DIEGO, UNIV OF
IPAPS, B-019
LA JOLLA, CA 92093
OICY ATTN HENRY G. BOOKER

BROWN ENGINEERING COMPANY, INC.
CUMMINGS RESEARCH PARK
MUNTSVILLE, AL 35807
OICY ATTN ROMEO A. DELIBERIS

CHARLES STARK DRAPER LABORATORY, INC.
555 TECHNOLOGY SQUARE
CAMBRIDGE, MA 02139
OICY ATTN D. B. COX
OICY ATTN J. P. GILMORE

COMPUTER SCIENCES CORPORATION
5565 ARLINGTON BLVD
FALLS CHURCH, VA 22046
OICY ATTN P. BLANK
OICY ATTN JOHN SPOOR
OICY ATTN C. NAIL

COMSAT LABORATORIES
LINTHICUM ROAD
CLARKSBURG, MD 20734
OICY ATTN G. HYDE

CORNELL UNIVERSITY
DEPARTMENT OF ELECTRICAL ENGINEERING
ITHACA, NY 14850
OICY ATTN D. T. FARLEY JR

ELECTROSPACE SYSTEMS, INC.
BOX 1359
RICHARDSON, TX 75080
OICY ATTN M. LOGSTON
OICY ATTN SECURITY (PAUL PHILLIPS)

ESL INC.
495 JAVA DRIVE
SUNNYVALE, CA 94066
OICY ATTN J. ROBERTS
OICY ATTN JAMES MARSHALL
OICY ATTN C. W. PRETTIE

FORD AEROSPACE & COMMUNICATIONS CORP
3939 FABIAN WAY
PALO ALTO, CA 94303
OICY ATTN J. T. MATTINGLEY

GENERAL ELECTRIC COMPANY
SPACE DIVISION
VALLEY FORGE SPACE CENTER
GODDARD BLVD KING OF PRUSSIA
P. C. BOX 8555
PHILADELPHIA, PA 19101
OICY ATTN M. H. BORTNER SPACE SCI LAB

GENERAL ELECTRIC COMPANY
P. O. BOX 1122
SYRACUSE, NY 13201
OICY ATTN F. REIBERT

GENERAL ELECTRIC COMPANY
TEMPO-CENTER FOR ADVANCED STUDIES
816 STATE STREET (P.O. DRAWER QQ)
SANTA BARBARA, CA 93102
OICY ATTN DASTAC
OICY ATTN DON CHANDLER
OICY ATTN TOM BARRETT
OICY ATTN TIM STEPHANS
OICY ATTN WARREN S. KNAPP
OICY ATTN WILLIAM MCNAMARA
OICY ATTN B. GAMBILL
OICY ATTN HACK STANTON

PHOTOMETRICS, INC.
442 MAYRETT ROAD
WASHINGTON, MA 01173
OICY ATTN IRVING L. KOFKY

PHYSICAL DYNAMICS INC.
P. O. BOX 3027
TOLLEDO, WA 98009
OICY ATTN E. J. FRENKEL

PHYSICAL DYNAMICS INC.
P. O. BOX 1089
BERKELEY, CA 94701
OICY ATTN A. THOMPSON

R & D ASSOCIATES
P. O. BOX 9895
MARINA DEL REY, CA 90291
OICY ATTN FORREST GILMORE
OICY ATTN BRYAN GABBARD
OICY ATTN WILLIAM B. WRIGHT JR
OICY ATTN ROBERT F. LELEVIER
OICY ATTN WILLIAM J. KARZAS
OICY ATTN H. ORY
OICY ATTN C. MAGDONALD
OICY ATTN R. TURCO

RAND CORPORATION, THE
1700 MAIN STREET
SANTA MONICA, CA 90406
OICY ATTN CULLEN GRAIN
OICY ATTN ED BEDROZIAN

RIVERSIDE RESEARCH INSTITUTE
80 WEST END AVENUE
NEW YORK, NY 10023
OICY ATTN VINCE TRAPANI

SCIENCE APPLICATIONS, INC.
P. O. BOX 2351
LA JOLLA, CA 92038
OICY ATTN LEWIS M. LINSON
OICY ATTN DANIEL A. HAMLIN
OICY ATTN D. SACHS
OICY ATTN E. A. STRAKER
OICY ATTN CURTIS A. SMITH
OICY ATTN JACK MCDUGALL

RAYTHEON CO.
528 BOSTON POST ROAD
SUDBURY, MA 01776
OICY ATTN BARBARA ADAMS

SCIENCE APPLICATIONS, INC.
HUNTSVILLE DIVISION
2109 W. CLINTON AVENUE
SUITE 700
HUNTSVILLE, AL 35805
OICY ATTN DALE H. DIVIS

SCIENCE APPLICATIONS, INCORPORATED
3400 WESTPARK DRIVE
MCLEAN, VA 22101
OICY ATTN G. CHAMAYNE

SCIENCE APPLICATIONS, INC.
80 MISSION DRIVE
PLEASANTON, CA 94500
OICY ATTN 52

SRI INTERNATIONAL
333 RAVENSWOOD AVENUE
MENLO PARK, CA 94025
OICY ATTN JONALD MEILSON
OICY ATTN ALAN BURNS
OICY ATTN G. SMITH
OICY ATTN L. L. COBB
OICY ATTN DAVID A. JOHNSON
OICY ATTN WALTER G. CHESNUT
OICY ATTN CHARLES L. RING
OICY ATTN WALTER JAYE
OICY ATTN M. BARON
OICY ATTN RAY L. LEADABRAND
OICY ATTN G. CARPENTER
OICY ATTN G. PRICE
OICY ATTN J. PETERSON
OICY ATTN R. MAKE, JR.
OICY ATTN V. GONZALES
OICY ATTN D. MCDANIEL

TECHNOLOGY INTERNATIONAL CORP
75 WIGGINS AVENUE
BEDFORD, MA 01730
OICY ATTN W. P. BOQUIST

TRW DEFENSE & SPACE SYS GROUP
ONE SPACE PARK
REDONDO BEACH, CA 90278
OICY ATTN R. K. PLEBUCH
OICY ATTN S. ALTSCHULER
OICY ATTN D. DEE

VISIDYNE, INC.
19 THIRD AVENUE
NORTH WEST INDUSTRIAL PARK
BURLINGTON, MA 01803
OICY ATTN CHARLES HUMPHREY
OICY ATTN J. W. CARPENTER