

AD-A079 744

CARNEGIE-MELLON UNIV PITTSBURGH PA MANAGEMENT SCIENC--ETC F/G 12/1
DEGREE SEQUENCES OF RANDOM GRAPHS.(U)
NOV 79 G CORNUEJOLS

N00014-75-C-0621

UNCLASSIFIED

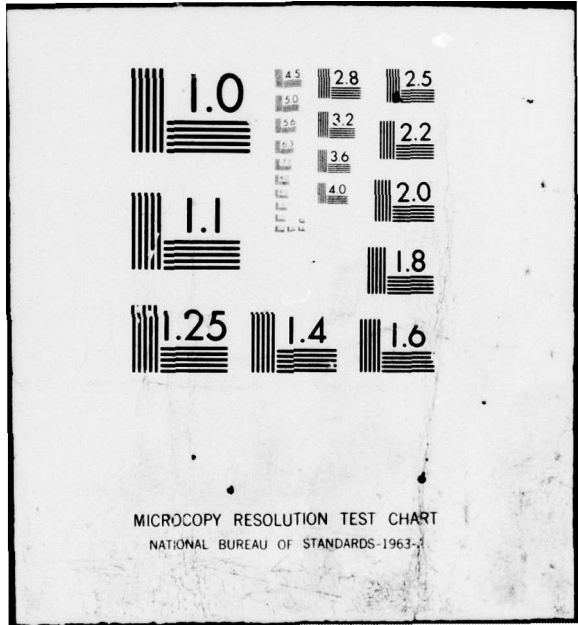
MSRR-451

NL

1 of 1
AD
A079744



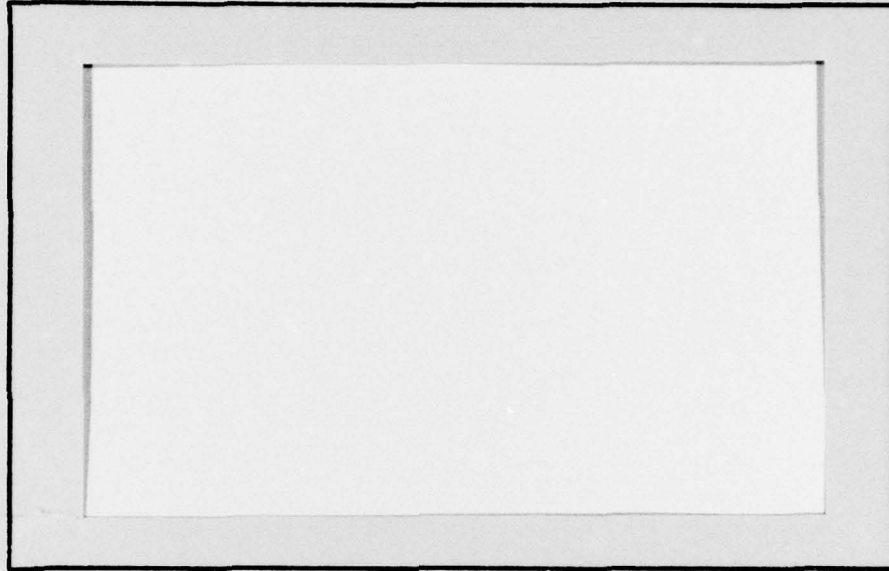
END
DATE
FILMED
2-80
DDC



MICROCOPY RESOLUTION TEST CHART
NATIONAL BUREAU OF STANDARDS-1963-A

① LEVEL II

ADA 079744



Carnegie-Mellon University

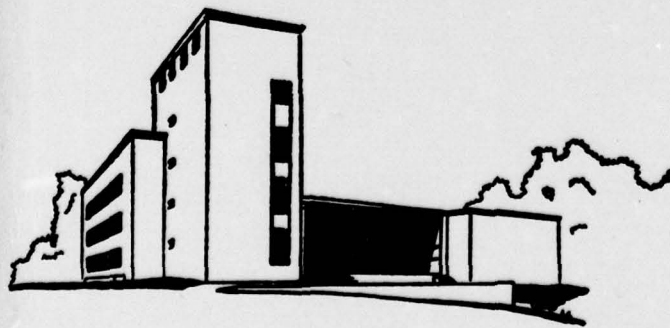
PITTSBURGH, PENNSYLVANIA 15213

GRADUATE SCHOOL OF INDUSTRIAL ADMINISTRATION

WILLIAM LARIMER MELLON, FOUNDER

DDC FILE COPY

DDC
RECEIVED
JAN 23 1980
B



DISTRIBUTION STATEMENT A
Approved for public release
Distribution Unlimited

80 1 22 062

① LEVEL II

W. P. #36-79-80

⑨ Management Science Research Report No. 451

⑭ MSRR-451, WP-36-79-80

⑥ Degree Sequences of Random Graphs.

by

⑩ Gerard Cornuejols
Carnegie-Mellon University

⑪ November 1979

⑫ 17

DISTRIBUTION STATEMENT A
Approved for public release;
Distribution Unlimited

DDC
RECEIVED
JAN 23 1980
B

⑮ This report was prepared as part of the activities of the Management Sciences Research Group, Carnegie-Mellon University, under contract N00014-75-C-0621 NR 047-048 with the Office of Naval Research. Reproduction in whole or in part is permitted for any purpose of the U. S. Government.

Management Sciences Research Group
Graduate School of Industrial Administration
Carnegie-Mellon University
Pittsburgh, Pennsylvania 15213

✓ 403 426

net

Degree Sequences of Random Graphs

by Gerard Cornuejols

ABSTRACT

A property is said to be satisfied by almost all graphs on n vertices if the fraction of the graphs that satisfy it goes to 1 as n goes to ∞ . For almost all graphs on n vertices the smallest vertex-degree is $n/2 - \sqrt{(n \log n)/2} + o(\sqrt{n})$. More generally we estimate the values in the tails of the degree sequence. We also show that the degree sequence $d_1 \geq d_2 \geq \dots \geq d_n$ of almost all graphs on n vertices satisfies $d_1 \neq d_2 \neq \dots \neq d_k$ and $d_{n-k} \neq \dots \neq d_{n-1} \neq d_n$ for all $k \leq n^\alpha$, $\alpha < 1/4$.

ACCESSION for	
NTIS	White Section <input checked="" type="checkbox"/>
DDC	Buff Section <input type="checkbox"/>
UNANNOUNCED	<input type="checkbox"/>
JUSTIFICATION _____	
BY _____	
DISTRIBUTION/AVAILABILITY CODES	
Dist.	AVAIL. and/or SPECIAL
A	

1. Introduction

In this paper we consider the graphs without loops or multiple edges whose vertices are labeled v_1, \dots, v_n . There are $2^{n(n-1)/2}$ such labeled graphs. Note that two different labeled graphs may be isomorphic. Given a graphical property a typical question in graphical enumeration is to compute the fraction of the labeled graphs on n vertices that satisfy it. When this fraction goes to 1 as n goes to ∞ we say that the graphical property is satisfied by almost all labeled graphs. This notion was introduced by Erdos and Reyni [4].

Graph theorists have traditionally spent much effort in enumerating non isomorphic graphs rather than labeled graphs. A "metatheorem" of Harary and Palmer [9] states that a graphical property holds for almost all non isomorphic graphs if and only if it holds for almost all labeled graphs. In view of this theorem the remainder of this paper will only be concerned with labeled graphs. We will often simply refer to labeled graphs as graphs for brevity.

There is a useful equivalent probabilistic view of the notion of a graphical property satisfied by almost all labeled graphs. Assume that all labeled graphs on n vertices are equally likely to occur; labeled graphs drawn randomly from this uniform probability distribution are denoted by G_n . It is easily checked that, in a random graph G_n , each of the possible $n(n-1)/2$ edges (v_i, v_j) , $i \neq j$, occurs independently with probability $1/2$. Given some graphical property A_n , we denote by $p_n = \Pr[A_n]$ the probability that a random graph G_n satisfies the property A_n . Note that p_n is the fraction of the labeled graphs on n vertices that satisfy A_n . So A_n holds for almost all labeled graphs if and only if the probability p_n goes to 1 as n goes to ∞ . An obvious generalization of this notion of random graphs is obtained when each of the possible $n(n-1)/2$ edge occurs independently with probability p , where

$0 < p < 1$. A random graph with such a probability distribution will be denoted by $G_n(p)$. With our notation $G_n(1/2) = G_n$. We say that a property A_n holds for almost all graphs $G_n(p)$ if and only if $p_n = \Pr[A_n]$ goes to 1 as n goes to ∞ . Let us mention also the notion of random graphs used by Erdos and Renyi [5]. They assume that all $\binom{n(n-1)/2}{m}$ labeled graphs with n vertices and m edges are equally likely to occur. Random graphs drawn from this distribution are denoted by $G_{n,m}$.

In [5], Erdos and Renyi mentioned the study of the vertex-degrees in random graphs as an interesting question. As a first step they proved

Theorem. Let $d_1(G_{n,m})$ be the largest vertex-degree in $G_{n,m}$ and $d_n(G_{n,m})$ the smallest. If m is a function of n such that $\lim_{n \rightarrow \infty} \frac{m}{n \log n} = \infty$, then for any $\epsilon > 0$

$$\lim_{n \rightarrow \infty} \Pr \left[\frac{d_1(G_{n,m})}{d_n(G_{n,m})} - 1 < \epsilon \right] = 1.$$

In [10], Ivchenko gave the limiting distribution of the vertex-degrees in $G_n(p)$ in the cases when $p \rightarrow 0$ as $n \rightarrow \infty$ and when $p \rightarrow 1$ as $n \rightarrow \infty$. However his approach is limited by the conditions on p . Recently Erdos and Wilson [6] made a new contribution to the study of the vertex-degrees with the following result.

Lemma. Almost all graphs G_n have a unique vertex of largest degree.

In this paper we give further properties of the vertex-degrees in random graphs. These properties are generalizations of the results of Erdos and Wilson [6]. Consider a random graph $G_n(p)$ where p is a constant probability, $0 < p < 1$. Let $q = 1 - p$. In the sequel we will write

$f(n) = o(g(n))$ to mean that $\frac{f(n)}{g(n)} \rightarrow 0$ as $n \rightarrow \infty$; $f(n) = O(g(n))$ will mean

that $\frac{f(n)}{g(n)} \rightarrow c$ as $n \rightarrow \infty$ for some constant $c > 0$ and $f(n) \sim g(n)$ will mean that $\frac{f(n)}{g(n)} \rightarrow 1$ as $n \rightarrow \infty$, where f and g are real valued functions defined on the set of positive integers and g never takes the value 0.

Given a graph on n vertices, we denote by $d_1 \geq d_2 \geq \dots \geq d_n$ its degree sequence. In section 2 we prove that for almost all graphs $G_n(p)$

$$(1) \quad d_k = np + \sqrt{2pq n \log n} + o(\sqrt{n})$$

for any $k \leq (\log n)^c$ where c is some positive constant. In particular, when $p = \frac{1}{2}$ and $k = 1$ we have

$$(2) \quad d_1 = n/2 + \sqrt{(n \log n)/2} + o(\sqrt{n})$$

for almost all graphs. This corrects an error that appeared in the lemma of Erdos and Wilson [6].

(1) is a property of the tail of the degree sequence in the sense that it deals with d_k where k is small compared to n . Another property of the tail of the degree sequence proved in section 2 is that almost all graphs $G_n(p)$ satisfy

$$(3) \quad d_k - d_{k+1} > l$$

for all positive integers k and l such that $k \leq n^\alpha$ and $l \leq n^\beta$ where $2\alpha + \beta < \frac{1}{2}$. By setting $k = l = 1$ in (3) it follows that almost all graphs $G_n(p)$ have a unique vertex of largest degree.

Recently the study of asymptotic results in random graphs has received a great deal of attention as a tool for analyzing some hard optimization problems on graphs. See, e.g. Grimmett and McDiarmid [8], Posa [14], Karp [11], Chvatal [1], [2], McDiarmid [12], Pulleyblank [15]. Our motivation

for the study of the degree sequences of random graphs also found its roots in analyzing an optimization problem on graphs: given a graph $G = (V, E)$ and a positive integer $k < n = |V|$, find k vertices of G that cover the maximum number of edges. This edge covering problem is analyzed in Cornuejols, Nemhauser and Wolsey [3]. It can be formulated as the following integer linear program:

$$\begin{aligned}
 z &= \max \sum_{e \in E} x_e \\
 x_e &\leq y_u + y_v \quad \text{for all } e = (u, v) \in E \\
 \sum_{v \in V} y_v &= k \\
 x_e &= 0 \text{ or } 1 \quad \text{for all } e \in E \\
 y_v &= 0 \text{ or } 1 \quad \text{for all } v \in V .
 \end{aligned}$$

The linear programming relaxation obtained by replacing the integer valued variables by real variables in the interval $[0, 1]$ gives an upper bound z_L on the value z_I . A lower bound z_H can be obtained by applying the following simple heuristic: pick k vertices with largest degrees in the graph G and let z_H be the number of edges that they cover. It is shown in [3] that $z_L = z_I = z_H$ whenever the graph G satisfies condition (3) with $\lambda = k$. Thus the heuristic and the relaxation find an optimal solution to the edge covering problem for almost all graphs $G_n(p)$ and all $k < n^\alpha$, $\alpha < 1/6$.

2. Vertex-degrees in random graphs

The vertex-degrees in $G_n(p)$ are identically distributed and have a binomial distribution $B(n-1, p)$. Furthermore note that there is a small positive correlation between the degrees of any two vertices v_i and v_j

since both degrees are increased by 1 if the edge (v_i, v_j) occurs in the graph, by 0 if it does not.

The general approach in this section will be, using the normal approximation to the binomial distribution, to solve a simplified problem with no correlation, then to introduce the correlation. It is interesting to parallel this approach with the work of Moon [13] on the maximum score in random tournaments. (In this problem there is a small negative correlation between the scores of any two players.)

Our first theorem will give the range of the degree sequence in a random graph $G_n(p)$. It is a consequence of the following lemma.

Lemma 1. Let X_1, \dots, X_n be n identically distributed random variables having the binomial distribution $B(n-1, p)$. Then the values of X_i , $i = 1, \dots, n$, all lie in the interval $[np - \sqrt{2pq n \log n}, np + \sqrt{2pq n \log n}]$ with a probability that goes to 1 as n goes to ∞ .

Proof: Consider the normalized random variables $X_i^* = \frac{X_i - (n-1)p}{\sqrt{pq(n-1)}}$. Let

$X_{[1]}^* = \max_{i=1, \dots, n} X_i^*$. By Boole's inequality, for any value x_n ,

$$(4) \quad \Pr[X_{[1]}^* > x_n] \leq n \Pr[X_1^* > x_n].$$

By the theorem of large deviations, Feller [7], for any fixed $\epsilon > 0$ and for all $x_n \rightarrow \infty$ such that $x_n = o(n^{1/6})$,

$$(5) \quad \Pr[X_1^* > x_n] \leq \frac{1 + \epsilon}{x_n \sqrt{2\pi}} e^{-x_n^2/2}.$$

Choose

$$(6) \quad x_n = \sqrt{2 \log n}.$$

Then (4)-(6) yield $\Pr[X_{[1]}^* > \sqrt{2 \log n}] \leq \frac{1+\epsilon}{2\sqrt{\pi \log n}}$. So

$\Pr[X_{[1]}^* > \sqrt{2 \log n}] \rightarrow 0$ as $n \rightarrow \infty$, i.e., with a probability that goes

to 1 as n goes to ∞ , $\frac{X_{[1]} - (n-1)p}{\sqrt{pq(n-1)}} \leq \sqrt{2 \log n}$. The upper bound

$X_{[1]} \leq (n-1)p + \sqrt{2pq(n-1) \log n}$ follows. Keeping only the highest order terms we get $X_{[1]} \leq np + \sqrt{2pq n \log n}$. A similar analysis of

$X_{[n]}^* = \min_{i=1, \dots, n} X_i^*$ yields the lower bound $np - \sqrt{2pq n \log n}$.

Theorem 1. For almost all graphs $G_n(p)$ the vertex-degrees all lie in the interval $[np - \sqrt{2pq n \log n}, np + \sqrt{2pq n \log n}]$.

Proof: This is a direct consequence of Lemma 1 since the vertex-degrees in $G_n(p)$ are identically distributed with the binomial distribution $B(n-1, p)$.

Note that the range of the degree sequence can be slightly tightened by choosing $x_n = \sqrt{2 \log n} - (1-\epsilon) \frac{\log \log n}{\sqrt{8 \log n}}$ in equation (6) of the proof of Lemma 1. This yields

Proposition 1. For any $\epsilon > 0$ and for almost all graphs $G_n(p)$

$$d_1 < np + \sqrt{2pq n \log n} - (1-\epsilon) \sqrt{\frac{pq n}{8 \log n}} \log \log n \quad \text{and}$$

$$d_n > np - \sqrt{2pq n \log n} + (1-\epsilon) \sqrt{\frac{pq n}{8 \log n}} \log \log n .$$

A consequence of Theorem 1 is that, for almost all graphs $G_n(p)$, the vertex-degrees are integers from a range of at most $2\sqrt{2pq n \log n}$ values. Thus

Corollary 1. The degree sequence of almost all graphs $G_n(p)$ contains a

subsequence of at least $\sqrt{\frac{n}{8pq \log n}}$ identical values.

The next theorem provides the values of the k largest vertex-degrees in $G_n(p)$. In order to prove the theorem we need the following lemma for independent random variables.

Lemma 2. Let X_1, \dots, X_m be m identically and independently distributed random variables having the binomial distribution $B(l, p)$. Assume that $\frac{l}{(\log m)^3} \rightarrow \infty$ as $m \rightarrow \infty$. Let $X_{[k]}$ be the k^{th} order statistic, i.e., $X_{[1]} \geq \dots \geq X_{[k]} \geq \dots \geq X_{[m]}$. Then with a probability that goes to 1 as n goes to ∞ ,

$$(7) \quad X_{[k]} > lp + \sqrt{pq} \cdot l \left(\sqrt{2 \log m} - \frac{(c+2) \log \log m}{\sqrt{2 \log m}} \right)$$

for all $k \leq (\log m)^c$ where c is a positive constant;

$$(8) \quad X_{[k]} > lp + \sqrt{apq} \cdot l \log m$$

for all $k \leq n^\alpha$ where $\frac{a}{2} + \alpha < 1$.

Proof. Consider the normalized random variables $X_i^* = \frac{X_i - lp}{\sqrt{pq} \cdot l}$. By

Boole's inequality, for any value x_m ,

$$(9) \quad \Pr[X_{[k]}^* \leq x_m] \leq \binom{m}{k-1} \Pr[X_1^* \leq x_m]^{m-k-1}$$

To bound the right side of (9), note that

$$(10) \quad \binom{m}{k-1} \leq m^k = e^{k \log m}$$

and that $\Pr[X_1^* \leq x_m] = 1 - \Pr[X_1^* > x_m] \leq 1 - \frac{1-\epsilon}{x_m \sqrt{2\pi}} e^{-x_m^2/2}$ for all $\epsilon > 0$ and $x_m = o(l^{1/6})$, by the theorem of large deviations. Since $1 - y \leq e^{-y}$ for all values of y ,

$$(11) \quad \Pr[X_1^* \leq x_m]^{m-k+1} \leq e^{-(m-k+1)} \frac{1-\epsilon}{x_m \sqrt{2\pi}} c^{-x_m^2/2}$$

To prove the inequality (7) when $k \leq (\log m)^c$, take

$$x_m = \sqrt{2 \log m} - \frac{(c+2) \log \log m}{\sqrt{2 \log m}} . \quad \text{Then (9)-(11) yield, when } m \rightarrow \infty ,$$

$$\Pr[X_{[k]}^* \leq x_m] \leq e^{(\log m)^{c+1}} \frac{1-\epsilon}{\sqrt{4\pi}} (\log m)^{c+1} + \frac{3}{2}$$

Thus $X_{[k]}^* > x_m$ with a probability that goes to 1 as m goes to ∞ . (7) follows.

Similarly, to prove the inequality (8) when $k \leq n^\alpha$, take

$$x_m = \sqrt{a \log m} . \quad (9) - (11) \text{ yield, when } m \rightarrow \infty ,$$

$$\Pr[X_{[k]}^* \leq x_m] \leq e^{m^\alpha \log m} \frac{1-\epsilon}{\sqrt{2\pi a \log m}} m^{1-a/2}$$

Thus $\Pr[X_{[k]}^* \leq x_m] \rightarrow 0$ as $m \rightarrow \infty$ for $\alpha < 1 - \frac{a}{2}$.

Theorem 2. Almost all graphs $G_n(p)$ satisfy the following two properties

$$(12) \quad d_k = np + \sqrt{2pq n \log n} - o(\sqrt{n})$$

for all $k \leq (\log n)^c$ where c is a positive constant;

$$(13) \quad np + \sqrt{apqn \log n} < d_k < np + \sqrt{2pq n \log n}$$

for all $k \leq n^\alpha$ where $\frac{a}{2} + \alpha < 1$.

Proof. Consider an arbitrary subset S_n of the vertices of $G_n(p)$ that has cardinality $m = \lfloor \frac{n}{(\log n)^2} \rfloor$. For a vertex v_i in S_n let $a(v_i)$ be the number of vertices not in S_n that are adjacent to v_i . Let a_k be the k^{th} largest $a(v_i)$. Finally let $s(v_i)$ be the degree of vertex v_i in the subgraph induced on S_n . Note that

$$(14) \quad d_k \geq a_k + \min_{v_i \in S_n} s(v_i) .$$

Applying Theorem 1 to the random subgraph induced on S_n yields

$$(15) \quad \min_{v_i \in S_n} s(v_i) > mp - \sqrt{2pqm \log m}$$

for almost all graphs $G_n(p)$. Since the random variables $a(v_i)$ are independent and identically distributed with the distribution $B(n-m, p)$, Lemma 2 can be applied to bound a_k .

For almost all graphs $G_n(p)$ and all $k \leq (\log n)^c$

$$(16) \quad a_k > (n-m)p + \sqrt{2pq(n-m)} (\sqrt{\log m} - o(1)).$$

(14)-(16) imply that $d_k > np + \sqrt{2pq n \log n} - o(\sqrt{n})$, where only the highest order terms have been kept in the right side. Equality (12) of Theorem 2 follows from this lower bound and the upper bound of Theorem 1.

Similarly (13) is a consequence of (14), (15), (8) and Theorem 1.

Theorems 1 and 2 state that some properties of the degree sequence in $G_n(p)$ have a probability that goes to 1 as n goes to ∞ . They are proved by lower bounding the probability by a function of n and showing that the bounds are asymptotically equal to 1. These bounds provide interesting information for medium size random graphs also, as shown in Table 1.

n	more than 95% of the graphs have a range smaller than	range of Theorem 1	more than 95% of the graphs have a range larger than
100	[32, 67]	[35, 64]	[40, 59]
1,000	[435, 564]	[441, 558]	[457, 542]
10,000	[4771, 5228]	[4785, 5214]	[4834, 5165]

The last theorem will show that in the tails of the degree sequence the vertex-degrees are all distinct. Actually it provides a lower bound on the difference between consecutive values in the tails of the degree sequence. To prove it we need a technical lemma.

Lemma 3. Let n be a positive integer, $0 < p < 1$, $q = 1 - p$, $0 < \beta < \frac{1}{2}$ and $0 < a < 2$. Define δ and h to be the integer parts of np and $\sqrt{apqn \log n}$ respectively, and $p_n = n^{2+\beta} \sum_{i=\delta+h}^n \binom{n}{i} p^i q^{n-i}{}^2$. Assume that $a > \beta + 3/2$. Then $p_n \rightarrow 0$ as $n \rightarrow \infty$.

Proof. In the sum $\sum_{i=\delta+h}^n \binom{n}{i} p^i q^{n-i}{}^2$ bound each of the first h terms by $\binom{n}{\delta+h} p^{\delta+h} q^{n-\delta-h}{}^2$ and each of the remaining terms by $\binom{n}{\delta+2h} p^{\delta+2h} q^{n-\delta-2h}{}^2$. Thus

$$p_n \leq n^{2+\beta} \left(h \binom{n}{\delta+h} p^{\delta+h} q^{n-\delta-h}{}^2 + nq \binom{n}{\delta+2h} p^{\delta+2h} q^{n-\delta-2h}{}^2 \right).$$

When n is large, an estimate of the binomial probabilities is available, see e.g. Feller [7].

$$\binom{n}{\delta+r} p^{\delta+r} q^{n-\delta-r} = \frac{1}{\sqrt{2\pi p q n}} e^{-\frac{r^2}{2p q n} + \rho_r}$$

where $|\rho_r| < \frac{r^2}{(p q n)^2} + \frac{2r}{p q n}$ so

$$\begin{aligned} p_n &\leq n^{2+\beta} \left(\frac{h}{2\pi p q n} e^{-\frac{h^2}{p q n}} + \frac{nq}{2\pi p q n} e^{-\frac{4h^2}{p q n}} \right) (1 + o(1)) \\ &\leq \frac{\sqrt{a \log n}}{2\pi \sqrt{p q}} n^{3/2 + \beta - a} + \frac{1}{2np} n^{2 + \beta - 4a} (1 + o(1)). \end{aligned}$$

Now $p_n \rightarrow 0$ as $n \rightarrow \infty$ if $3/2 + \beta - a < 0$ and $2 + \beta - 4a < 0$. Both inequalities follow from the assumptions of the lemma.

Theorem 3. Almost all graphs $G_n(p)$ satisfy

$$d_k - d_{k+1} > \ell$$

for all positive integers k and ℓ such that $k \leq n^\alpha$ and $\ell \leq n^\beta$ where $2\alpha + \beta < \frac{1}{2}$.

Proof. Given a vertex v of $G_n(p)$ and a set of m vertices that does not contain v , $b(i; m, p) = \binom{m}{i} p^i q^{m-i}$ is the probability that v is incident with exactly i of the m vertices. The probability that two given vertices have respective degrees s and $s+t$ is

$$p b(s-1; n-2, p) b(s+t-1; n-2, p)$$

$$+ q b(s; n-2, p) b(s+t; n-2, p) .$$

Thus, given the positive integers s and ℓ , the probability that two given vertices of $G_n(p)$ have respective degrees s and $s+t$ for some t , $0 \leq t \leq \ell$ is

$$P(s, \ell) = p b(s-1; n-2, p) \sum_{t=0}^{\ell} b(s+t-1; n-2, p) \\ + q b(s; n-2, p) \sum_{t=0}^{\ell} b(s+t; n-2, p)$$

($b(i; m, p)$ is assumed to be 0 if $i > m$). For any positive integer $r < n-1$ the probability that at least two vertices of $G_n(p)$ have respective degrees s and $s+t$ for some $s \geq r$ and some t , $0 \leq t \leq \ell$, is upper bounded by

$$\pi_n = n(n-1) \sum_{s=r}^{n-1} P(s, \ell) .$$

Thus the probability that $d_k - d_{k+1} \leq \ell$ for positive integers k and ℓ satisfying $k \leq n^\alpha$ and $\ell \leq n^\beta$ is at most

$$P[d_{k+1} < r] + \pi_n .$$

Now we assume that r is the integer part of $np + \sqrt{apqn \log n}$, where $a > 0$ and $\frac{a}{2} + \alpha < 1$. Then by the property (13) in Theorem 2, $\Pr[d_{k+1} < r] \rightarrow 0$ as $n \rightarrow \infty$. To bound π_n note that $b(s; n, p)$ is a decreasing function of s for $s > np$. Thus, for all $s \geq r$,

$$\begin{aligned} P(s, l) &\leq p(l+1) b(s-1; n-2, p)^2 + q(l+1) b(s; n-2, p)^2 \\ &\leq (l+1) b(s-1; n-2, p)^2 \end{aligned}$$

Therefore $\pi_n \leq n(n-1)(l+1) \sum_{s=r}^{n-1} b(s-1; n-2, p)^2$. By Lemma 3 and the assumption that $2\alpha + \beta < \frac{1}{2}$, $\pi_n \rightarrow 0$ as $n \rightarrow \infty$.

Acknowledgments

I wish to thank George Nemhauser and Abraham Neyman for several helpful discussions. This work was supported by NSF Grant ENG 75-00568 while I was at Cornell University and by NSF Grant ENG 7902506 while at Carnegie-Mellon University.

References

1. V. Chvatal, "Determining the Stability Number of a Graph," SIAM Journal on Computing 6 (1977), 643-662.
2. V. Chvatal, "Hard Knapsack Problems," Journal of Operations Research, to appear.
3. G. Cornuejols, G. L. Nemhauser and L. A. Wolsey, "Worst-Case and Probabilistic Analysis of Algorithms for a Location Problem," Journal of Operations Research, to appear.
4. P. Erdos and A. Renyi, "On Random Graphs, I," Publicationes Mathematicae (Debrecen) 6 (1959), 290-297.
5. P. Erdos and A. Renyi, "On the Evolution of Random Graphs," Magyar Tudományos Akademia Matematikai Kutato Intezete Kozlemenyei 5 (1960), 17-61.
6. P. Erdos and R. J. Wilson, "On the Chromatic Index of Almost All Graphs," Journal of Combinatorial Theory, Series B 23 (1977), 255-257.
7. W. Feller, An Introduction to Probability Theory and its Applications, Vol. 1, Wiley, New York, Third Edition (1968).
8. G. R. Grimmett and C. J. H. McDiarmid, "On Colouring Random Graphs," Mathematical Proceedings of the Cambridge Philosophical Society 77 (1975), 313-324.
9. F. Harary and E. M. Palmer, Graphical Enumeration, Academic Press, New York (1973).
10. G. I. Ivchenko, "On the Asymptotic Behaviour of Degrees of Vertices in a Random Graph," Theory of Probability and its Applications 18 (1973) 188-195.
11. R. M. Karp, "The Probabilistic Analysis of Some Combinatorial Search Algorithms," in J. F. Traub, ed., Algorithms and Complexity: New Directions and Recent Results, Academic Press, New York, (1976) 1-19.
12. C. McDiarmid, "Determining the Chromatic Number of a Graph," SIAM Journal on Computing 8 (1979), 1-14.
13. J. W. Moon, Topics on Tournaments, Holt, Rinehart and Winston, New York (1968).
14. L. Posa, "Hamiltonian Circuits in Random Graphs," Discrete Mathematics 14 (1976), 359-369.
15. W. R. Pulleyblank, "Minimum Node Covers and 2-bicritical graphs," Mathematical Programming 17 (1979), 91-103.

REPORT DOCUMENTATION PAGE		READ INSTRUCTIONS BEFORE COMPLETING FORM
1. REPORT NUMBER Technical Report No. 451	2. GOVT ACCESSION NO.	3. RECIPIENT'S CATALOG NUMBER
4. TITLE (and Subtitle) DEGREE SEQUENCES OF RANDOM GRAPHS	5. TYPE OF REPORT & PERIOD COVERED Technical Report November 1979	
	6. PERFORMING ORG. REPORT NUMBER MSRR #451	
7. AUTHOR(s) Gerard Corneujols	8. CONTRACT OR GRANT NUMBER(s) N00014-75-C-0621	
9. PERFORMING ORGANIZATION NAME AND ADDRESS Graduate School of Industrial Administration Carnegie-Mellon University Pittsburgh, Pennsylvania 15213	10. PROGRAM ELEMENT, PROJECT, TASK AREA & WORK UNIT NUMBERS NR 047-048	
11. CONTROLLING OFFICE NAME AND ADDRESS Personnel and Training Research Programs Office of Naval Research (Code 458) Arlington, Virginia 22217	12. REPORT DATE November 1979	
	13. NUMBER OF PAGES 13	
14. MONITORING AGENCY NAME & ADDRESS (if different from Controlling Office)	15. SECURITY CLASS. (of this report) Unclassified	
	15a. DECLASSIFICATION/DOWNGRADING SCHEDULE	
16. DISTRIBUTION STATEMENT (of this Report)		
<div style="border: 1px solid black; padding: 5px; width: fit-content; margin: auto;"> <p>DISTRIBUTION STATEMENT A Approved for public release; Distribution Unlimited</p> </div>		
17. DISTRIBUTION STATEMENT (of the abstract entered in Block 20, if different from Report)		
Approved for public release; distribution unlimited.		
18. SUPPLEMENTARY NOTES		
19. KEY WORDS (Continue on reverse side if necessary and identify by block number)		
Random graphs, Vertex-degrees, Degree sequence, Binomial distribution.		
20. ABSTRACT (Continue on reverse side if necessary and identify by block number)		
<p>A property is said to be satisfied by almost all graphs on n vertices if the fraction of the graphs that satisfy it goes to 1 as n goes to ∞. For almost all graphs on n vertices the smallest vertex-degree is $n/\ln n - \sqrt{(n \log n)/2} + o(\sqrt{n})$. More generally we estimate the values in the tails of the degree sequence. We also show that the degree sequence $d_1 \geq d_2 \geq \dots \geq d_n$ of almost all graphs on n vertices satisfies $d_1 \neq d_2 \neq \dots \neq d_k$ and $d_{n-k} \neq \dots \neq d_{n-1} \neq d_n$ for all $k \leq n^\alpha$, $\alpha < 1/4$.</p>		