

AD-A080 231

EXERCISE DESERT ROCK LAS VEGAS NV
EXERCISE DESERT ROCK VI. OPERATION ORDER NUMBER 6.(U)
MAR 55

F/G 18/3

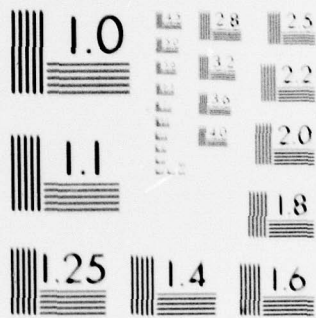
UNCLASSIFIED

NL

| OF |
AD
A080231



END
DATE
FILMED
3-80
DDC



MICROCOPY RESOLUTION TEST CHART
NATIONAL BUREAU OF STANDARDS-1963-A

PHOTOGRAPH THIS SHEET

ADA080231

DTIC ACCESSION NUMBER



LEVEL



INVENTORY

HQ Exercise DESERT ROCK VI, Nevada
Operation Order No. 6
Exercise DESERT ROCK VI
DOCUMENT IDENTIFICATION

March 1955

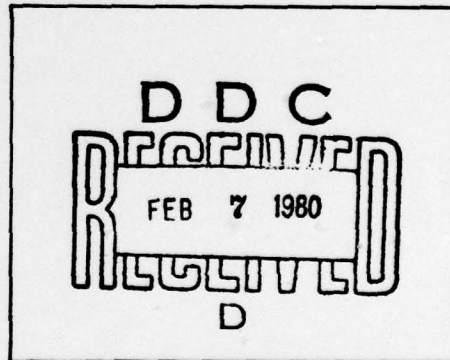
DISTRIBUTION STATEMENT A

Approved for public release;
Distribution Unlimited

DISTRIBUTION STATEMENT

ACCESSION FOR	
NTIS	GRA&I <input checked="" type="checkbox"/>
DTIC	TAB <input type="checkbox"/>
UNANNOUNCED	<input type="checkbox"/>
JUSTIFICATION	
Per Ltr. on file	
BY	
DISTRIBUTION /	
AVAILABILITY CODES	
DIST	AVAIL AND/OR SPECIAL
A	

DISTRIBUTION STAMP



DATE ACCESSIONED

80 2 6 64

DATE RECEIVED IN DTIC

PHOTOGRAPH THIS SHEET AND RETURN TO DTIC-DDA-2

DTL-77, 1472

ADA080231

OPERATION ORDER No. 6

DESERT ROCK 6

Statement A
Approved for public release;
Distribution unlimited.

1253
0306
1955
246-8

~~UNCLASSIFIED~~

OPERATION ORDER

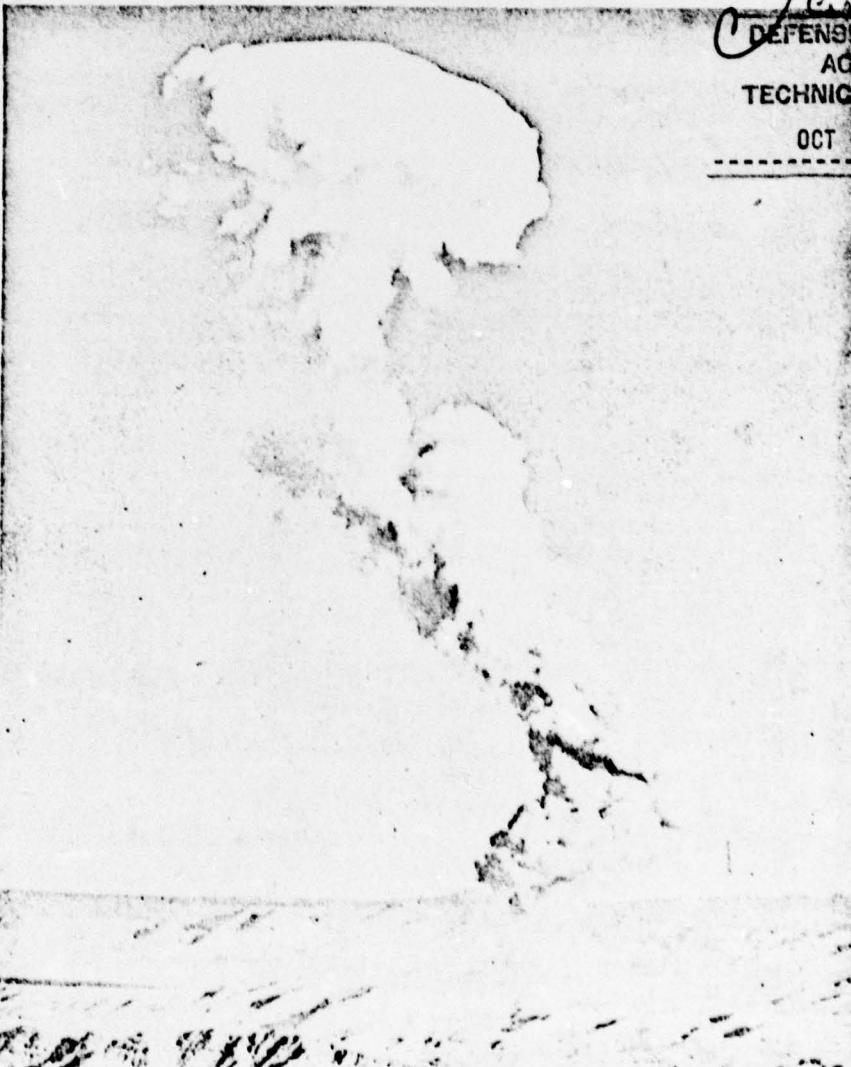
RECLASSIFIED TO
UNCLASSIFIED
BY AUTH. OF

NO. 6

DOWNGRADED AT 5 YEAR INTERVALS
DECLASSIFIED AFTER 12 YEARS
DOD DIR 5200.10

DATE JUN 7 67

DESERT ROCK VI



C. C. 1
DEFENSE NUCLEAR
AGENCY
TECHNICAL LIBRARY
OCT 1 1977

LOG # S-15-55

LIBRARY
US Army A & M School
Fort Sill, Oklahoma

CANCELLED

COPY # 22 OF 31 COPIES

~~UNCLASSIFIED~~

UNCLASSIFIED

Headquarters Exercise Desert Rock VI
(872536) Nevada
191200 March 1955

No Change From Oral Orders

OPERATION ORDER NR 6

REFERENCE: MAPS: Nevada, 1:50,000

Sheets: Tippish Springs 2758 II
Cane Spring 2757 I
Spector Range 2757 II
Papoose Lake 2858 III
Frenchman Lake 2857 IV
Mercury 2857 III

TIME ZONE: Pacific Standard

TASK ORGANIZATION:

Deputy Exercise Director	Brig Gen Fred W. Sladen Jr.
Control Group Commander	Lt Col D.F. Reece
3d Marine Corps Brigade	Brig Gen J.W. Earnshaw
Observer Group Commander	Capt B. Ham
150 personnel USAF	
100 personnel USMC	
177 personnel 3d Marine Corps	
250 personnel US Army Troops	
6th Army CBR Defense Teams	Major E.R. Shappell
532d FA (Obsr) Bn (-)	1st Lt J.T. Breunig
50th Chemical Platoon	Capt W.T. Burnham
Army Aviation Section	Major J.B. Feldt

1. SITUATION

Atomic Energy Commission will detonate an atomic missile D-Day, H-Hour, which approximately 427 USAF and Marine Corps personnel, 250 US Army and Navy personnel will observe. 85 personnel from the Artillery School will test equipment and doctrine. 1,950 personnel of 3d Marine Corps Provisional Atomic Exercise Brigade (see Marine Operation Order 1-55) will participate to test equipment and training doctrine.

2. MISSION

Headquarters Exercise Desert Rock VI will conduct Exercise Desert Rock VI-3, Shot BEE, area T-7a, D-Day, H-Hour at the Nevada Test Site to:

CANCELLED

UNCLASSIFIED

- a. Indoctrinate observers with the actual detonation of an atomic device.
- b. Provide instruction and experience for individual protection against nuclear radiation and blast effects.
- c. Give instruction and training for tactical disposition and movement of troops, supported by helicopters and tactical air. (See Marine Operation Order 1-55)
- d. Obtain information, test equipment and train observers for FA observation Bn.
- e. Instruct personnel and test training doctrine for 6th Army CBR Defense Teams.

3. EXECUTION

3d Marine Corps Brigade; participating test units; official observer group will move by motor convoy to area T-7a, under control of the Control Group Commander. Participating personnel will be entrenched "H" minus 1 hour.

a. Control Group

- (1) Deputy Exercise Director and Aide
- (2) Group Commander - Lt Col D.P. Reece
- (3) Rad-Safe Officer - Col F.W. Ludecke
- (4) Signal Officer - Lt Col J.R. Windham
- (5) Provost Marshal - Lt Col A.G. Russell Jr.
- (6) Medical Officer - Col R.T. Findlay
- (7) Control Group and assistants will leave Camp Desert Reck in sufficient time to clear Mercury check point a minimum of 20 minutes prior to arrival of first serial of motor convoy.

b. Rad-Safe: 6 mobile teams, mounted in 1/4 Ton vehicles with radies will be dug in, in vicinity of Command Trench. Will survey trench area and control movement of observers through display area.

- (1) Will supply additional survey teams for Marine Corps on request.
- (2) Rad-Safe Officer will assume charge of evacuation in case of radioactive fallout.

c. Medical: 12th Evacuation Hospital; 3 (2 man) aid teams located in trenches. Aid station located VIC 839962.

(1) Air Section will maintain two (2) H-23 helicopters with litter pods, on ready alert from H-Hour until relieved.

d. Provost Marshal:

(1) Will provide sufficient MP TCF to control the movement to and from Camp Desert Rock.

(2) Company "C", 505th MP Bn will supply personnel.

e. 50th Chemical Platoon:

(1) Will provide personnel for Rad-Safe survey teams.

(2) Operate decontamination station located at (848888).

f. Air Section:

(1) Will maintain alert with not less than 2 H-23 aircraft equipped with stretcher pods.

(2) Alert will be maintained from H-1 until relieved by Control Group Commander.

g. "C" Btry (-) 532d FA Battalion:

Will operate flash and sound CP's as follows:

Flash CP	810961
Flash Location NR 1	759988
Flash Location NR 2	775976
Flash Location NR 3	794969
Flash Location NR 4	824953
Flash Location NR 5	834945
Sound CP	796984
Sound CP (Alternate)	858874

h. 232d Signal Co:

(1) Will provide two (2) direct lines to AEC Control Post at Yucca Pass.

(2) Provide FA system in trench area and parking area, and insure that system is wired in with AEC CP.

(3) Provide wire communication with 532d FA Bn CP located VIC 810961.

- (4) Provide communication with parking area VIC 839961.
- (5) Provide wire communication with Marine Corps Hq VIC 783959.

1. Coordinating Instructions:

- (1) All permanent party personnel will draw and wear film badges.
- (2) Observer personnel will be issued and wear film badges. See SOP Dosimetry Film Badges.
- (3) Observers will be loaded on vehicles by roster. Roster will be checked and collected by group commander. Group commander will turn in certified roster to S-2.
- (4) All personnel will be informed that two (2) minutes prior to H-Hour a 15 second siren signal will be sounded. At this time the Control Group Commander will order all participants to crouch in their entrenchments well below the surface of the ground and remain in that position until announcement to rise is made over the PA system.
- (5) All personnel will be cautioned not to pick up any items from the ground.
- (6) All vehicles will be supplied with brooms and personnel will be brushed off and inspected for contamination prior to loading vehicles.

4. ADMINISTRATION

- a. Current administrative instructions apply.
- b. Transportation will be furnished by Camp Desert Rock S-4.
 - (1) Vehicles will be marked on front and right side, with a letter number system, i.e., A-1, A-2, B-1 etc.
 - (2) March table and Route maps see Annexes A and B.
- c. Medical see Para 3,c.
- d. Uniforms and Equipment
 - (1) Clothing and Equipment:

Fatigues	Pistol Belt
Combat boots	Canteen, w/cover and cup, containing water
Field Jackets	First aid packet and pouch
Overcoats (Optional)	
Helmet, steel, w/liner	
- e. Hot breakfast will be served in Camp Desert Rock prior to entrucking.

5. SIGNAL

- a. Current SOI.
- b. Forward CP Exercise Desert Rock VI opens H-60 minutes at entrenchment area control point.
- c. Radio silence from H-30 minutes to H+15 minutes with one exception, Control Group Commander's radio H-15 minutes to H+15 minutes.

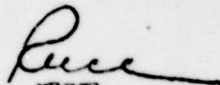
WYMAN
Lt Gen

ANNEXES:

- A. Route Map and Troop Areas
- B. March Table
- C. Schedule of Events
- D. Evacuation Plan

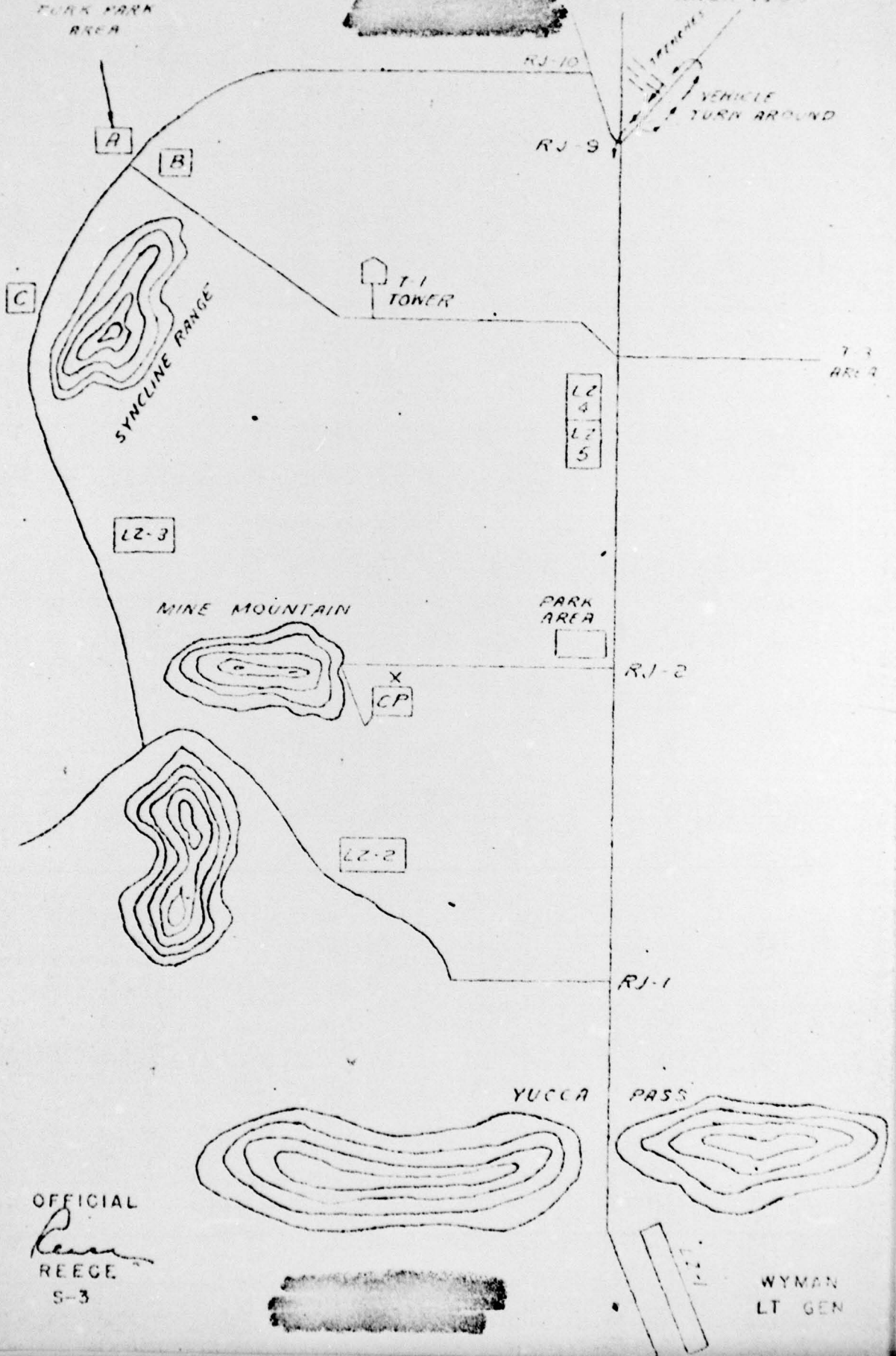
DISTRIBUTION: Special

OFFICIAL:


REECE
S-3

<u>UNIT</u>	<u>COPY NR</u>
DA G-3	1 - 4
6th Army G-3	5 - 6
6th Army PIO	7
AFSWP	8 - 13
CG Exercise Desert Rock VI	14
EXO Exercise Desert Rock VI	15
S-1 Exercise Desert Rock VI	16
S-2 Exercise Desert Rock VI	17
S-3 Exercise Desert Rock VI	18 - 19
S-4 Exercise Desert Rock VI	20
CO 95th Engr (C) Bn	21
Battery C - 532d Observation FA Bn	22
Instructor Group Exercise Desert Rock VI	23
CML - Rad Safe Off Exercise Desert Rock VI	24
PM Exercise Desert Rock VI	25
Trans Off Exercise Desert Rock VI	26
Signal Off Exercise Desert Rock VI	27
Surgeon Exercise Desert Rock VI	28
QM Off Exercise Desert Rock VI	29
Hq Comdt Exercise Desert Rock VI	30
PIO Exercise Desert Rock VI	31

ANNEX A ROUTE MAP [REDACTED] 1200 MARCH 1955
PARK PARK AREA



ANNEX B VEHICLE ROSTER AND MARCH TABLE OF JPN ORDER NR 6

Headquarters Exercise Desert Rock VI
 872536 Nevada
 191200 March 1955

SERIAL NR 1 "A" COLOR YELLOW

1. Serial Commander - 2nd Lt Mortimer
2. Marine Hq & Hq Personnel (205)
3. To Marine CP Area
4. Moves 1300 D-1 Day

1ST SECTION

*A-1 - 1/4 Ton	A-9 - 3/4 Ton	*A-17 - 2 1/2 Ton
A-2 - 3/4 Ton	A-10 - 1/4 Ton	*A-18 - 2 1/2 Ton
A-3 - 1/4 Ton	A-11 - 1/4 Ton	A-19 - 1/4 Ton
A-4 - 1/4 Ton	A-12 - 1/4 Ton	A-20 - 2 1/2 Ton
A-5 - 1/4 Ton	*A-13-2 1/2 Ton	A-21 - 2 1/2 Ton
A-6 - 1/4 Ton	*A-14-2 1/2 Ton	A-22 - 2 1/2 Ton
A-7 - 1/4 Ton	*A-15-2 1/2 Ton	A-23 - 2 1/2 Ton
A-8 - 1/4 Ton	*A-16-2 1/2 Ton	

END SECTION (Leave 15 Minutes after SECTION NR 1)

A-24 - 1/4 Ton	V-3 - Tank Trk	V-11 - Tank Trk
A-25 - 1/4 Ton	V-4 - 1/4 Ton	V-12 - Tank Trk
A-26 - 1/4 Ton	V-5 - Tank Trk	V-13 - Tank Trk
A-27 - 1/4 Ton	V-6 - Tank Trk	V-14 - 2 1/2 Ton
A-28 - 1/4 Ton	V-7 - Tank Trk	V-15 - Tractor/Traile
A-29 - 3/4 Ton	V-8 - Tank Trk	V-16 - 2 1/2 Ton
V-1 - 1/4 Ton	V-9 - 2 1/2 Ton	V-17 - Wrecker
V-2 - Tank Trk	V-10 - Tank Trk	

MARCH TABLE

RATE	TYPE	TL	LOCATION OF CRITICAL POINTS	ETA	LATEST CLEARANCE
20 MPH	Open	10	IP Main Gate	1300	1310
20 MPH	"	"	Mer ck pt NR 1	1306	1316
20 MPH	"	"	Mer ck pt NR 2	1311	1321
35 MPH	"	"	Yucca Pass	1351	1401
35 MPH	"	"	RJ #2	1400	1410
15 MPH	Close	"	Detracking Area	1416	1426

*Vehicles will assemble at RJ #2. Will be dispatched to CP DR by Motor Officer in charge on D-1 Day.

*D-1 Day; will depart Camp Desert Rock for Marine CP area at 0900, load passengers, thence to trench area.

All other vehicles remain in Test Site until D-1 Day.

Headquarters Exercise Desert Rec. VI
 872536 Nevada
 191200 March 1955

SERIAL NR 2 "B" COLOR GREEN

1. Serial Commander - Capt Aquino
2. Marine Troops for Loading Zone NR 3 (247)
3. Vehicles Assemble Parking Area RJ #2.
4. Moves at 1315 D-1 Day.

*B-1 - 1/4 Ton	B-13 - 3/4 Ton	B-25 - 3/4 Ton
*B-2 - 2 1/2 Ton	B-14 - 3/4 Ton	B-26 - 3/4 Ton
*B-3 - 2 1/2 Ton	B-15 - 3/4 Ton	B-27 - 3/4 Ton
*B-4 - 2 1/2 Ton	B-16 - 3/4 Ton	B-28 - 3/4 Ton
*B-5 - 2 1/2 Ton	B-17 - 1/4 Ton	B-29 - 3/4 Ton
*B-6 - 2 1/2 Ton	B-18 - 1/4 Ton	B-30 - 3/4 Ton
*B-7 - 2 1/2 Ton	B-19 - 1/4 Ton	B-31 - 3/4 Ton
*B-8 - 2 1/2 Ton	B-20 - 1/4 Ton	B-32 - 1/4 Ton
*B-9 - 2 1/2 Ton	B-21 - 1/4 Ton	*B-33 - Tractor/Trail
*B-10 - 2 1/2 Ton	B-22 - 3/4 Ton	er
*B-11 - 2 1/2 Ton	B-23 - 3/4 Ton	*B-34 - 2 1/2 Ton
B-12 - 3/4 Ton	B-24 - 3/4 Ton	*B-35 - Wrecker
		*B-36 - 1/4 Ton

MARCH TABLE

RATE	TYPE	TL	LOCATION OF CRITICAL POINTS	ETA	LATEST CLEARANCE
20 MPH	Open	10	IF Main Gate	1315	1325
20 MPH	"	"	Mer et pt NR 1	1321	1331
20 MPH	"	"	Mer et pt NR 1	1326	1336
35 MPH	"	"	Yucca Pass	1406	1416
15 MPH	Close	"	Loading Zone #3	1443	1456

*Vehicles will assemble RJ #1. Will depart for Camp Desert Rock on order of Motor Officer in charge on D-1 Day.

*D/1 Day will depart Camp Desert Rock 0920 for Area A, load passengers, thence to "BED" trench area.

All other vehicles remain in Test Site until D/1 Day.

Headquarters Exercise Desert Rock VI
872506 Nevada
191200 March 1966

SERIAL NR 3 "E" COLOR PINK

1. Serial Commander - Capt McCorkle
2. Marine Personnel for Loading Zone NR 1 and NR 2 (274)
3. Report to OIC Parking Area RJ #2.
4. Moves at 1330 D-1 Day.

*E-1 - 1/4 Ton	*E-11 - 2 1/2 Ton	*E-21 - 2 1/2 Ton
*E-2 - 2 1/2 Ton	*E-12 - 2 1/2 Ton	*E-22 - 2 1/2 Ton
*E-3 - 2 1/2 Ton	*E-13 - 2 1/2 Ton	*E-23 - 2 1/2 Ton
*E-4 - 2 1/2 Ton	E-14 - 1/4 Ton	*E-24 - 2 1/2 Ton
*E-5 - 2 1/2 Ton	E-15 - 1/4 Ton	*E-25 - 2 1/2 Ton
*E-6 - 2 1/2 Ton	E-16 - 1/4 Ton	*E-26 - 2 1/2 Ton
*E-7 - 2 1/2 Ton	E-17 - 3/4 Ton	E-27 - 3/4 Ton
*E-8 - 2 1/2 Ton	E-18 - 1/4 Ton	E-28 - 3/4 Ton
*E-9 - 2 1/2 Ton	*E-19 - Tractor/Trailer	*E-29 - Tractor/ Trailer
*E-10 - 2 1/2 Ton	*E-20 - Tractor/Trailer	*E-30 - 1/4 Ton

MARCH TABLE

RATE	TYPE	TL	LOCATION OF CRITICAL POINTS	ETA	LATEST CLEARANCE
20 MPH	Open	10	IP (MP) Gate	1330	1340
20 MPH	Open	"	Mer ck pt NR 1	1336	1346
20 MPH	Open	"	Mer ck pt NR 2	1341	1351
35 MPH	Open	"	Yucca Pass	1421	1431
35 MPH	Open	"	RJ #2	1430	1440
15 MPH	Open	"	Loading Zone #2	1439	1449

1st portion of serial continues to loading zone #2, 2nd portion of serial drops off at loading zone #1.

* Vehicles will assemble RJ #2. Will be dispatched to Camp Desert Rock on order of Motor Officer in charge on D-1 Day.

*D-1 Day; Depart Camp Desert Rock 0940 to area "A", load passengers, thence to "BBE" trench area.

All other vehicles remain in Test Site until D-1 Day.

Headquarters Exercise Desert Rock VI
 872833 Nevada
 191800 March 1955

SERIAL NR 4 "C" COLOR RED

1. Serial Commander - 2nd Lt Sylvester
2. Marine Personnel for (Loading Zone NR 4) to Trench Area (295).
3. Moves D-Day.

C-1 - 1/4 Ton	C-9 - 29 Pass. Bus
C-2 - 29 Pass. Bus	C-10 - 29 Pass. Bus
C-3 - 29 Pass. Bus	C-11 - 2 1/2 Ton
C-4 - 29 Pass. Bus	C-12 - 2 1/2 Ton
C-5 - 29 Pass. Bus	C-13 - 2 1/2 Ton
C-6 - 29 Pass. Bus	C-14 - 29 Pass. Bus
C-7 - 29 Pass. Bus	C-15 - 1/4 Ton
C-8 - 29 Pass. Bus	

MARCH TABLE

RATE	TYPE	TL	LOC-TION OF CRITICAL POINTS	ETA	LATEST CLEARANCE
20 MPH	Open	10	IP Main Gate	0217	0227
20 MPH	"	"	Mer ck pt NR 1	0223	0233
20 MPH	"	"	Mer ck pt NR 2	0228	0238
35 MPH	"	"	Yucca Pass	0308	0318
35 MPH	"	"	KJ Y	0323	0334
10 MPH	Close		Trenches	0329	0339
			Yucca Pass	0359	0409

All vehicles will remain at Yucca Pass (News Nob) until released by Transportation Officer in charge on D-Day.

D/1 Day: Depart Camp Desert Rock 1000 for area "A", load passengers, thence to "EE2" trench area.

[REDACTED] Camp Desert Rock VI
 872006 Nevada
 191200 March 1955

SERIAL NR 5 "D" COLOR PURPLE

1. Serial Commander - 1st Lt West
2. Marine personnel (Loading Zone NR 5) to trench area (29C)
3. Moves D-Day.

D-1 - 1/4 Ton	D-6 - 29 Pass Bus	D-11 - 29 Pass Bus
D-2 - 29 Pass Bus	D-7 - 29 Pass Bus	D-12 - 29 Pass Bus
D-3 - 29 Pass Bus	D-8 - 29 Pass Bus	D-13 - 29 Pass Bus
D-4 - 29 Pass Bus	D-9 - 29 Pass Bus	D-14 - 1/4 Ton
D-5 - 29 Pass Bus	D-10 - 29 Pass Bus	

MARCH TABLE

<u>RATE</u>	<u>TYPE</u>	<u>TL</u>	<u>LOCATION OF CRITICAL POINTS</u>	<u>ETA</u>	<u>LATEST CLEARANCE</u>
20 MPH	Open	10	IP Main Gate	0232	0242
20 MPH	"	"	Mer ck pt NR 1	0238	0248
20 MPH	"	"	Mer ck pt NR 2	0243	0253
35 MPH	"	"	Yucca Pass	0323	0333
35 MPH	"	"	RJ Y	0339	0349
10 MPH	Close	2	(*) Trenches	0342	0352
			Yucca Pass	0412	0422

All vehicles will remain at Yucca Pass (News Knob) until released by Transportation Officer in charge on D-Day.

D+1 Day: Depart Camp Desert Rock 1020 for area "A", load passengers, thence to "EE" trench area.

Headquarters [REDACTED] Desert Rock VI
872886 Nevada
191200 March 1966

SERIAL 6

VEHICLES TO BE SUBMITTED LATER

MARCH TABLE

RATE	TYPE	TL	LOCATION OF CRITICAL POINTS	ETA	LATEST CLEARANCE
20 MPH	Open	10	IP Main Gate	0227	0257
20 MPH	"	"	Mer ck pt. R 1	0253	0303
20 MPH	"	"	Mer ck pt. R 2	0259	0309
35 MPH	"	"	Yucca Pass	0339	0349
35 MPH	"	"	RJ Y	0355	0405
15 MPH	"	"	Detrucking Area	0400	0410
			Arrive Parking Area	0415	0425

WYMAN
Lt Gen

DISTRIBUTION: Special

OFFICIAL:

Reece
REECE
S-3

ANNEX C SCHEDULE OF EVENTS TO OPERATION ORPHEUS NR 6

Headquarters Exercise Desert Rock VI
 872536 Nevada
 191200 March 1955

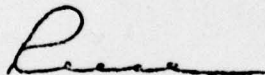
ITEM	TENTATIVE TIME		INSTRUCTIONS
1.	1300	D-1 Day	Serial NR 1 Marine, depart Cp Desert Rock for CP area.
2.	1315	D-1 Day	Serial NR 2 Marine, depart Cp Desert Rock for Loading Zone NR 3.
3.	1330	D-1 Day	Serial NR 3 Marine, depart Cp Desert Rock for Loading Zone NR 1 & 2.
4.	1430	D-1 Day	532d FA Arty Bn depart Cp Desert Rock to occupy stations.
5.	1430	D-1 Day	30 helicopters depart Cp Desert Rock for Loading Zone NR 1.
6.	1500	D-1 Day	Serial NR 1, 2, depart forward area for Cp Desert Rock.
7.	0200	D-Day	Control Group Exercise Desert Rock depart for forward area.
8.	0223	D-Day	Serial NR 4 arrive Mercury ck pt NR 1, will return to News Knob for emergency use if needed, thence to Cp Desert Rock.
9.	0238	D-Day	Serial NR 5. DO
10.	0253	D-Day	Serial NR 6 arrive Mercury ck pt NR 1; to trench area; thence to parking area.
11.	0415	D-Day	All vehicles close parking area and News Knob.
12.	0500	D-Day	Communication checked with FA Bn and Marine Corps CP. All troops oriented over FA system.
13.	0512	D-Day	All personnel warned to crouch in trenches or turn back toward blast.
14.	0515	H-Hour	SHOT
15.	0530	D-Day	Rad-Safe survey of trench area.
16.	0545	D-Day	Observers begin walk through display area.
17.	0545	D-Day	Marine troops begin march South down Mercury Highway to Loading Zone NR 4 and NR 5.
18.	0800	D-Day	Observers assemble and load vehicles, depart forward area.
19.	0930	D-Day	Observers arrive Cp Desert Rock.
20.	1200	D-Day	All Marine troops at Area "A", "B" and CP area. Helicopters in vicinity of CP area.

ITEM	TENTATIVE TIME		INSTRUCTIONS
21.	0900	D+1 Day	Serials NRs 1, 2, 3, 4, and 5 depart Cp Desert Rock for Area A. 20 minute interval will be maintained.
22.	1000	D+1 Day	Helicopter air-lift 1 platoon from Area "A" to area "C" and return to Area "A".
23.	1130	D+1 Day	Vehicles arrive Area "A".
24.	1200	D +1 Day	Vehicles depart Area "A" for trench area.
25.	1200	D +1 Day	Helicopters depart forward area for Cp Desert Rock.
26.	1300	D +1 Day	Marine troops walk through display area.
27.	1430	D +1 Day	Vehicle Serials depart forward area for Cp Desert Rock. Serials will be dispatched by Provost Marshal to insure traffic control over Mercury Highway and through Camp Mercury.

WYMAN
Lt Gen

DISTRIBUTION: Special

OFFICIAL:



REECE
S-3

Headquarters Exercise Desert Rock VI
(872536) Nevada
191200 March 1955

ANNEX D (Emergency Evacuation Plan) TO OPERATION ORDER NR 6

1. MISSION

This annex outlines the procedure to be followed to accomplish the total evacuation of the forward area during Exercise Desert Rock VI. The Deputy Exercise Director, through the Control Group Commander, will direct the implementation of this plan.

2. EXECUTION

Personnel will be prepared to execute a total evacuation of the forward area at any time during D-Day.

a. The direction of evacuation will be to the South to a designated place of safety in the following order:

- (1) Assembly area "A" (846878)
- (2) Check Gate NR 2 Camp Mercury (914605)
- (3) Camp Desert Rock Motor Pool (872537)

b. ~~Serial Commanders~~ will be responsible for the movement of their vehicles during the evacuation and for maintaining the proper control of their march units.

c. Group Commanders will be responsible for the proper movement and loading of their groups aboard vehicles.

d. The following procedure will be followed for personnel in the Entrenchment Area.

- (1) Observer groups in trench area will assemble and entruck in vehicles under supervision of the Group Commander.
- (2) Vehicles held at Hows Knob will report to trench area or loading Zones NR 4 and NR 5 to pick up Marine Personnel.
- (3) Marine personnel in Loading Zone NR 1 will evacuate to Camp Desert Rock air strip by helicopter on order of Marine Brigade Commander.

UNCLASSIFIED

(4) Marine personnel in CP area, Loading Zones NR 2 and NR 3 will evacuate to a safe area under direction of Marine Rad-Safe survey teams and on order of Marine Brigade Commander.

(5) Camp Desert Rock Provost Marshal will control all traffic entering Mercury Highway.

(6) Battery "C" (-) 532d FA (Obsr) will designate FLASH OP as assembly point. When all personnel are accounted for, Battery Commander will notify Control Group Commander and proceed by most direct route to Camp Desert Rock Motor Pool.

(7) The Control Group will evacuate the test area on order of the Deputy Exercise Director when it is assured that all other groups have been evacuated.

(a) The Control Group Commander will have a check made of the vehicles at the designated rendezvous area.

e. (1) Maximum vehicle speed will be 35 MPH.

(2) Vehicle March Units will remain intact during all movements.

(3) Command, MP, and medical units will have road priority during the movement.

(4) The decontamination team of the 50th Chemical Service Platoon will move mobile and portable decontamination equipment to the designated place of safety to perform such decontamination as directed.

(5) Decontamination of personnel will be carried out on order.

(6) Code designation for the evacuation plan will be "CONDITION RAIN".

(7) "Condition Rain" will be transmitted by most readily available means and will be authenticated by the Camp Desert Rock Rad-Safe Officers.

(8) "Condition Rain" will be transmitted to all groups of Task Force by means available. Siren at command trench will sound groups of seven (7) short blasts, with 30 second intervals between groups.

(9) Windows in vehicles will be closed when practical.

(10) Individuals will refrain from eating or smoking during the evacuation.

UNCLASSIFIED

~~SECRET~~
UNCLASSIFIED

3. MEDICAL EVACUATION

a. Aid stations in parking area will cease operation upon the evacuation of all personnel from the forward area and join the control group March Unit.

b. Casualties will be evacuated to the Medical Detachment at Camp Desert Rock.

c. Route of evacuation will be the most direct route available.

4. MISCELLANEOUS

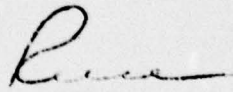
a. Emergency Signal: Seven (7) short blasts with 30 second intervals by siren.

b. Forward CP will move from entrenchment area upon receipt of "Condition Rain". New location to be announced at time of movement.

WYMAN
Lt Gen

DISTRIBUTION: Special

OFFICIAL:



REECE
S-3

~~SECRET~~
UNCLASSIFIED