

AD-A080 517

MILITARY ACADEMY WEST POINT NY OFFICE OF THE DIRECTO--ETC F/G 5/9
ATTRITION AND ADMISSION SCORES, CLASSES OF 1979-1980-1981, (U)

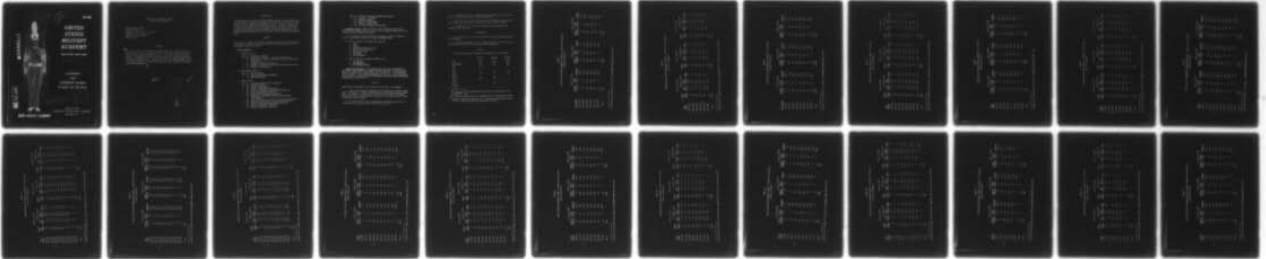
UNCLASSIFIED

NOV 79 J W HOUSTON
80-001

NL

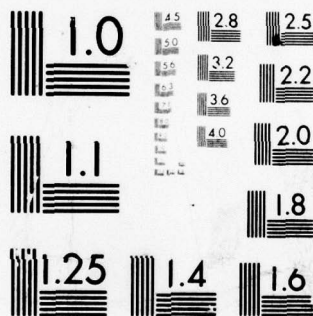
|of|

AD
A080517



END
DATE
FILMED
3-80

DDC



MICROCOPY RESOLUTION TEST CHART
NATIONAL BUREAU OF STANDARDS-1963-A

80-001

UNITED STATES MILITARY ACADEMY

WEST POINT, NEW YORK

See 1473 in locker

ATTRITION AND ADMISSION SCORES CLASSES OF 1979-80-81

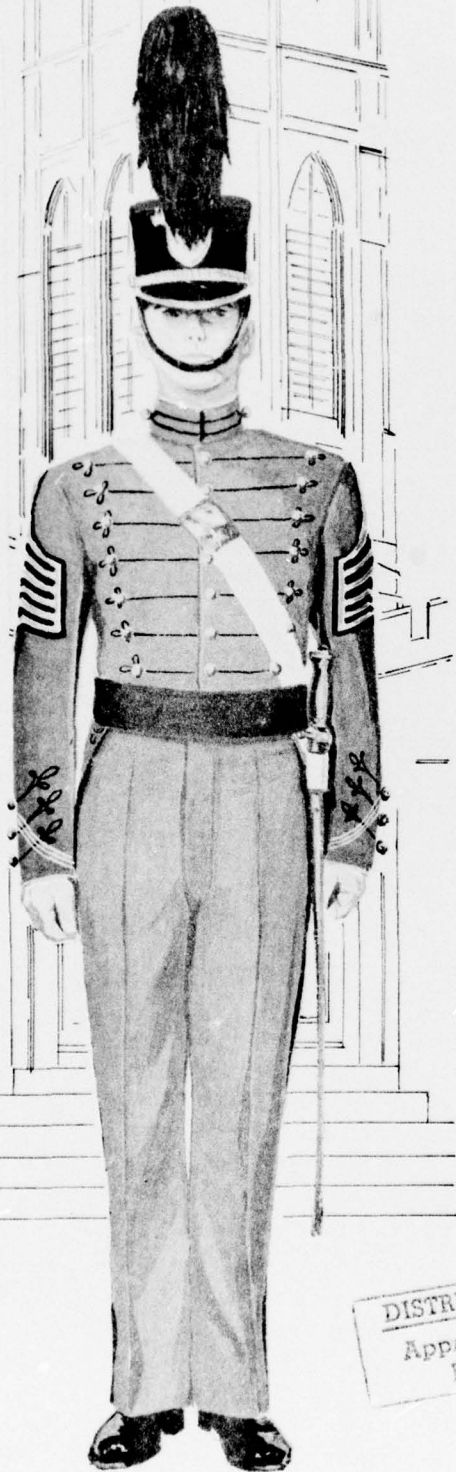
DDC RECEIVED
FEB 8 1980
RECEIVED
A

OFFICE OF THE DIRECTOR OF INSTITUTIONAL RESEARCH
November 1979

DUTY-HONOR-COUNTRY

ADA 080517

DDC FILE COPY



DISTRIBUTION STATEMENT A
Approved for public release;
Distribution Unlimited

80 2 7 051

ATTRITION AND ADMISSION SCORES,
CLASSES OF 1979-80-81

Report Number 80-001
Project Number 317
Prepared by: Mr. John W. Houston
Programmer: Ms. Nancy Lease
Typist: Susan Griffiths
November 1979

ABSTRACT

↙ This report shows the relationships between admission scores and losses from the Class of 1979 through graduation, and losses from the Classes of 1980 and 1981 through 30 September 1979. A chi-square test for significance was calculated for total losses for each class with each admission variable. Conclusions are: (a) the CEER score is a better predictor of total losses than any of its components; and (b) the Whole Candidate Score is a better predictor of total losses than LPS, PAE, or any of the individual CEER components.

↙

-A-

Accession For	
NTIS GMA&I	<input checked="" type="checkbox"/>
DDC TAB	<input type="checkbox"/>
Unannounced	<input type="checkbox"/>
Justification	<input type="checkbox"/>
By _____	
Distribution/	
Availability Codes	
Dist.	Avail and/or special
A	

Introduction

In investigating attrition from the Military Academy, reports were previously made on "Attrition and Admission Scores" for the Classes of 1974 and 1975 at the beginning of academics in the Second Class years of each of those classes (Reports #73-012 and #74-019). In order to determine if there are changes in the relationship between admission scores and attrition, the current project examined attrition of the Class of 1979 through graduation and the Classes of 1980 and 1981 through 30 September 1979.

Method

The losses are divided into three categories, based on the loss code assigned by S-1, USCC on the monthly United States Military Academy Attrition Report (USMA Form 2-317):

Loss Categories

a. Academic Losses:

- Code 13 - Academic (Resigned)
- " 26 - Leadership & Academic (Separated-Personality)
- " 27 - Leadership, Academic & Physical Education (Separated-Personality)
- " 31 - Academic (Separated-Inability)
- " 33 - Academic and Physical Education (Separated-Inability)
- " 51 - Academics (Turned Back)

b. Motivation Losses:

- Code 11 - CBT (Resigned)
- " 12 - Second Class Summer (Resigned)
- " 17 - Other (Resigned)

c. Other Losses:

- Code 14 - Leadership--H&T-Conduct (Resigned)
- " 15 - Honor (Resigned)
- " 16 - Personal (Resigned)
- " 21 - Conduct (Separated-Personality)
- " 22 - Traits of Character (Separated-Personality)
- " 23 - Honor (Separated-Personality)
- " 24 - Leadership (Separated-Personality)
- " 25 - Leadership and Physical Education (Separated-Personality)
- " 28 - Other (Personality Disorder--Separated-Personality)
- " 29 - Leadership and Conduct (Separated-Personality)
- " 32 - Physical Education (Separated-Inability)
- " 34 - Medical (Separated-Inability)
- " 35 - Dropped (Separated-Inability)

- Code 36 - Military Training (Separated-Inability)
- " 41 - Deceased, Accidental
- " 42 - Deceased, Natural
- " 52 - Medical (Turned Back)
- " 53 - Conduct (Turned Back)
- " 54 - Military Training (Turned Back)

Admission Scores: Tables show the total losses for each of the three classes, and percentage of loss by loss categories for each of the following eleven admission variables.

a. The attrition data are given in descending order of admission scores at 500-point intervals for Whole Candidate Score.

b. They are given at 50-point intervals for:

1. CEER
2. ACEER
3. Leadership Potential Score
4. Physical Aptitude Exam
5. High School Rank
6. SAT-Verbal
7. SAT-Mathematics

c. They are given at 3-point intervals for:

1. ACT-English
2. ACT-Mathematics
3. ACT-Natural Science

Statistical Analyses: A chi-square test was used to determine if there was a significant relationship between admission scores and total losses for each of the three classes (79, 80, and 81). In calculating the chi-square, if the expected frequency of losses in a given range was less than five, adjacent ranges were combined to insure that the expected frequency was five or more.

Results

Significant relationships are as follows (see Table 1 for summary):

a. Total losses increase significantly for each of the three classes with a decrease in the Whole Candidate Score, CEER/ACEER, and High School Rank. For example: in the Class of 1979, 78.7% of cadets with Whole Candidate Scores of 6500-6999 were retained, while only 49.4% with a WCS of 5000-5499 were retained.

b. The SAT-Math score has a significant relationship to losses in the Classes of 79 and 80, but not for the Class of 81.

c. ACT-Math scores have a significant relationship to losses in the Class of 80, but not in the Classes of 79 and 81.

d. LPS, PAE, SAT-Verbal, ACT-English, and ACT-Natural Science are not significantly related to total losses for any of the classes.

e. Similar results were found on previous studies made on the Classes of 1974 and 1975.

Conclusions

a. The CEER score is a better predictor of total losses than any of its components.

b. The Whole Candidate Score is a better predictor of total losses than LPS, PAE, or any of the individual CEER components.

Table 1

Level of Significance of Admission Variables vs. Total Losses*

	<u>CL '79</u>	<u>CL '80</u>	<u>CL '81</u>
WCS	.001	.001	.001
CEER/ACEER**	.001	.001	.001
LPS	-***	-	-
PAE	-	-	-
HSR	.01	.05	.05
SAT-V	-	-	-
SAT-M	.001	.001	-
ACT-E	-	-	-
ACT-M	-	.05	-
ACT-NS	-	-	-

*For Class of 79 at Graduation and for Classes of 80 and 81 as of 30 September 1979.

**The CEER and ACEER tables were combined for the significance tests.

***A dash (-) indicates there was not a significant correlation at the .05 level between the variable and total attrition.

TABLE 2A
 ATTRITION AND WHOLE CANDIDATE SCORES, CLASSES OF 1979-80-81
 (By Loss Category)

WCS Range	Class of 1979			Class of 1980			Class of 1981					
	Number in Range	Academic	Motivation	Percent Lost*	Number in Range	Academic	Motivation	Percent Lost	Number in Range	Academic	Motivation	Percent Lost
7000-7499	4	0	50.0	0	4	0	0	0	8	0	25.0	0
6500-6599	89	1.1	18.0	2.2	92	1.1	23.9	1.1	95	1.1	23.2	4.2
6000-6499	416	1.9	26.7	1.4	529	2.1	31.0	2.3	474	3.2	19.2	4.8
5500-5999	736	7.3	28.3	4.4	707	6.6	29.0	3.8	710	6.2	19.6	3.9
5000-5499	176	19.9	26.1	4.6	143	18.2	36.4	2.8	169	15.4	30.8	3.6
4500-4999	9	33.3	55.6	0	8	25.0	37.5	0	8	37.5	0	12.5
Total	1430				1483				1464			

*Percent of all cadets with scores in range who were lost for reason indicated.

TABLE 3
 ATTRITION AND CEER SCORES, CLASSES OF 1979-80-81
 (Total Attrition)

CEER Range	Class of 1979			Class of 1980			Class of 1981		
	Number Entered	Number Lost	Percent*	Number Entered	Number Lost	Percent	Number Entered	Number Lost	Percent
750-800	11	4	36.4	8	1	12.5	5	2	40.0
700-749	58	10	17.2	68	20	29.4	43	18	41.9
650-699	137	39	28.5	170	54	31.8	137	40	29.2
600-649	243	78	32.1	305	93	30.5	305	65	21.3
550-599	302	117	38.5	316	111	35.1	356	90	25.3
500-549	191	80	41.9	167	76	45.5	185	74	40.0
450-499	82	50	61.0	56	38	67.9	57	30	52.6
400-449	15	12	80.0	9	8	88.9	10	4	40.0
Total	1039			1099			1098		

*Percent of all cadets with scores in indicated range who were lost.

TABLE 3A
 ATTRITION AND CEER SCORES, CLASSES OF 1979-80-81
 (By Loss Category)

CEER Range	Class of 1979			Class of 1980			Class of 1981					
	Number in Range	Academic	Motivation	Other	Number in Range	Academic	Motivation	Other	Number in Range	Academic	Motivation	Other
750-800	11	9.1	27.3	0	8	0	12.5	0	5	0	40.0	0
700-749	58	0	17.2	0	68	2.9	26.5	0	43	0	32.8	9.3
650-699	137	0.7	24.8	2.9	170	1.8	29.4	0.6	137	1.5	22.6	5.1
600-649	243	2.1	27.2	2.8	305	2.6	24.9	3.0	305	1.3	17.0	3.0
550-599	302	7.9	26.8	4.0	316	3.5	27.8	3.8	356	5.6	15.7	4.0
500-549	191	10.5	26.7	4.6	167	15.0	26.3	4.2	185	10.8	25.9	3.2
450-499	82	24.4	30.5	6.1	56	21.4	39.3	7.2	57	24.6	22.8	5.3
400-449	15	40.0	33.3	6.7	9	55.6	33.3	0	10	20.0	20.0	0
Total	1039				1099				1098			

*Percent of all cadets with scores in range who were lost for reason indicated.

TABLE 4
 ATTRITION AND ACEER SCORES, CLASSES OF 1979-80-81
 (Total Attrition)

ACEER Range	Class of 1979			Class of 1980			Class of 1981		
	Number Entered	Number Lost	Percent*	Number Entered	Number Lost	Percent	Number Entered	Number Lost	Percent
750-800	0	0	0	3	1	33.3	0	0	0
700-749	16	6	37.5	16	3	18.7	10	3	30.0
650-699	44	14	31.8	43	18	41.9	39	10	25.6
600-649	112	41	36.6	100	38	38.0	92	28	30.4
550-599	115	42	36.5	163	80	49.1	146	55	37.7
500-549	83	33	39.8	48	26	54.2	67	30	44.8
450-499	22	11	50.0	10	10	100.0	11	8	72.7
400-449	0	0	0	2	1	50.0	1	0	0
Total	392			385			366		

*Percent of all cadets with scores in indicated range who were lost.

TABLE 4A
 ATTRITION AND ACEER SCORES, CLASSES OF 1979-80-81
 (By Loss Category)

ACEER Range	Class of 1979			Class of 1980			Class of 1981					
	Number in Range	Percent Lost* Aca- demic	Moti- vation	Other	Number in Range	Percent Lost Aca- demic	Moti- vation	Other	Number in Range	Percent Lost Aca- demic	Moti- vation	Other
750-800	0	0	0	0	3	0	33.3	0	0	0	0	0
700-749	16	0	37.5	0	16	0	12.5	6.3	10	0	30.0	0
650-699	44	0	29.5	2.3	43	2.3	39.5	0	39	2.6	20.5	2.6
600-649	112	2.7	32.1	1.8	100	3.0	32.0	3.0	92	1.1	22.8	6.5
550-599	115	4.3	30.4	1.8	163	5.5	39.9	3.7	146	9.6	24.0	4.1
500-549	83	12.0	21.7	6.0	48	14.6	37.5	2.1	67	13.4	23.9	7.5
450-499	22	27.3	22.7	0	10	20.0	80.0	0	11	18.2	45.5	9.1
400-449	0	0	0	0	2	0	50.0	0	1	0	0	0
Total	392				385				366			

*Percent of all cadets with scores in range who were lost for reason indicated.

TABLE 5
 ATTRITION AND LEADERSHIP POTENTIAL SCORES, CLASSES OF 1979-80-81
 (Total Attrition)

LPS Range	Class of 1979		Class of 1980		Class of 1981				
	Number Entered	Number Lost	Percent*	Number Entered	Number Lost	Percent	Number Entered	Number Lost	Percent
750-800	6	3	50.0	4	1	25.0	6	2	33.3
700-749	90	30	33.3	93	39	41.9	78	27	34.6
650-699	313	136	43.5	340	137	40.3	335	96	28.7
600-649	388	132	34.0	407	158	38.8	440	142	32.3
550-599	319	109	34.2	345	134	38.8	311	94	30.2
500-549	198	85	42.9	186	65	34.9	197	62	32.5
450-499	83	31	37.3	78	27	34.6	68	21	30.9
400-449	26	8	30.8	23	11	47.8	21	9	42.9
350-399	9	5	55.6	7	5	71.4	6	1	16.7
300-349	0	0	0	0	0	0	2	1	50.0
Total	1432			1483			1464		

*Percent of all cadets with scores in indicated range who were lost.

TABLE 5A
 ATTRITION AND LEADERSHIP POTENTIAL SCORES, CLASSES OF 1979-80-81
 (By Loss Category)

LPS Range	Class of 1979			Class of 1980			Class of 1981					
	Number in Range	Aca- dem- ic	Moti- vation	Other	Number in Range	Aca- dem- ic	Moti- vation	Other	Number in Range	Aca- dem- ic	Moti- vation	Other
750-800	6	0	50.0	0	4	0	25.0	0	6	0	33.3	0
700-749	90	11.1	20.0	2.2	93	4.3	35.5	2.2	78	10.3	23.1	1.3
650-699	313	9.6	31.0	2.9	340	5.9	32.1	2.4	335	6.6	17.9	4.2
600-649	388	5.4	23.7	4.9	407	5.9	28.5	4.7	440	6.6	20.5	5.2
550-599	319	6.9	24.8	2.5	345	7.2	28.7	2.9	311	4.8	21.9	3.5
500-549	198	7.1	32.3	3.5	186	4.3	29.0	1.6	197	4.1	24.4	4.1
450-499	83	2.5	32.5	2.4	78	2.6	32.1	0	68	7.4	19.1	4.4
400-449	26	7.7	19.2	3.8	23	13.0	30.4	4.3	21	9.5	23.8	9.5
350-399	9	0	55.6	0	7	14.3	42.9	14.3	6	0	16.7	0
300-349	0	0	0	0	0	0	0	0	2	0	50.0	0
Total	1432				1483				1464			

*Percent of all cadets with scores in range who were lost for reason indicated.

TABLE 6

ATTRITION AND PAE SCORES, CLASSES OF 1979-80-81
(Total Attrition)

PAE Range	Class of 1979			Class of 1980			Class of 1981		
	Number Entered	Number Lost	Percent*	Number Entered	Number Lost	Percent	Number Entered	Number Lost	Percent
750-800	15	6	40.0	17	15	88.2	15	5	33.3
700-749	32	15	46.9	43	21	48.8	47	19	40.4
650-699	110	51	46.4	125	59	47.2	126	45	35.7
600-649	269	106	39.4	216	76	35.2	249	71	28.5
550-599	328	113	34.5	324	120	37.0	326	104	31.9
500-549	321	114	35.5	321	122	38.0	361	104	28.8
450-499	267	89	33.3	232	79	34.1	261	79	30.3
400-449	77	36	46.8	80	29	36.2	69	25	36.2
350-399	10	6	60.0	21	6	28.6	5	2	40.0
300-349	0	0	0	21	13	61.9	2	1	50.0
250-299	0	0	0	38	15	39.5	0	0	0
200-249	0	0	0	28	11	39.3	1	1	100.0
Total	1429			1466			1462		

*Percent of all cadets with scores in indicated range who were lost.

TABLE 6A

ATTRITION AND PAE SCORES, CLASSES OF 1979-80-81
(By Loss Category)

PAE Range	Class of 1979			Class of 1980			Class of 1981					
	Number in Range	Academic	Motivation	Percent Lost*	Number in Range	Academic	Motivation	Percent Lost	Number in Range	Academic	Motivation	Percent Lost
750-800	15	0	20.0	20.0	17	17.6	64.7	5.9	15	20.0	13.3	0
700-749	32	25.0	21.9	0	43	14.0	32.6	2.3	47	12.8	21.3	6.4
650-699	110	9.1	30.0	7.3	125	6.4	36.8	4.0	126	7.1	26.2	2.4
600-649	269	7.8	27.9	3.7	216	4.2	27.8	3.3	249	6.4	16.9	5.2
550-599	328	6.1	25.0	3.3	324	5.6	28.1	3.4	326	4.6	22.1	5.2
500-549	321	8.1	25.9	1.5	321	5.6	30.2	2.2	361	5.3	19.7	3.9
450-499	267	4.1	25.8	3.4	232	6.5	25.4	2.1	261	6.1	20.7	3.4
400-449	77	5.2	39.0	2.6	80	5.0	30.0	1.3	69	7.2	24.6	4.3
350-399	10	10.0	50.0	0	21	4.8	19.0	4.8	5	0	40.0	0
300-349	0	0	0	0	21	4.8	42.9	14.3	2	0	50.0	0
250-299	0	0	0	0	38	2.6	34.2	2.6	0	0	0	0
200-249	0	0	0	0	28	3.6	35.7	0	1	0	100.0	0
Total	1429				1466				1462			

*Percent of all cadets with scores in range who were lost for reason indicated.

TABLE 7
 ATTRITION AND HIGH SCHOOL RANK SCORES, CLASSES OF 1979-80-81
 (Total Attrition)

HSR Range	Class of 1979			Class of 1980			Class of 1981		
	Number Entered	Number Lost	Percent*	Number Entered	Number Lost	Percent	Number Entered	Number Lost	Percent
750-800	78	25	32.1	98	33	33.7	85	24	28.2
700-749	78	16	20.5	101	36	35.6	63	22	34.9
650-699	184	56	35.9	214	79	36.9	196	57	29.1
600-649	180	62	34.4	218	84	38.5	213	60	28.2
550-599	243	77	31.7	259	90	34.7	282	70	24.8
500-549	302	112	37.1	295	107	36.3	308	94	30.5
450-499	161	76	47.2	143	59	41.3	146	56	38.4
400-449	123	64	52.0	86	46	53.5	87	35	40.2
350-399	57	24	42.1	51	30	58.8	56	28	50.0
300-349	14	8	57.1	11	8	72.7	19	10	52.6
250-299	6	4	66.7	6	4	66.7	8	1	12.5
200-249	5	3	60.0	2	2	100.0	1	0	0
Total	1431			1484			1464		

*Percent of all cadets with scores in indicated range who were lost.

TABLE 7A
 ATTRITION AND HIGH SCHOOL RANK SCORES, CLASSES OF 1979-80-81
 (By Loss Category)

HSR Range	Class of 1979			Class of 1980			Class of 1981		
	Number in Range	Academic	Motivation	Number in Range	Academic	Motivation	Number in Range	Academic	Motivation
750-800	78	2.6	29.5	98	1.0	31.6	85	3.5	20.0
700-749	78	3.8	14.1	101	5.0	29.7	63	6.3	23.8
650-699	184	1.1	32.6	214	3.3	28.0	196	1.5	24.0
600-649	180	3.9	27.2	218	4.6	32.6	213	2.8	22.5
559-599	243	4.1	23.0	259	2.3	30.5	282	3.2	16.7
500-549	302	6.0	28.1	295	4.7	28.8	308	8.8	16.9
450-499	161	13.0	30.4	143	12.6	25.2	146	11.6	21.2
400-449	123	17.9	30.1	86	12.8	33.7	87	13.8	23.0
350-399	57	17.5	21.1	51	21.6	31.4	56	8.9	37.5
300-349	14	21.4	35.7	11	9.1	63.6	19	10.5	42.1
250-299	6	33.3	0	6	50.0	16.7	8	12.5	0
200-249	5	20.0	20.0	2	50.0	50.0	1	0	0
Total	1431			1484			1464		

*Percent of all cadets with scores in range who were lost for reason indicated.

TABLE 8
 ATTRITION AND SAT-VERBAL SCORES, CLASSES OF 1979-80-81
 (Total Attrition)

SAT-V Range	Class of 1979			Class of 1980			Class of 1981		
	Number Entered	Number Lost	Percent*	Number Entered	Number Lost	Percent	Number Entered	Number Lost	Percent
750-800	2	0	0	4	1	25.0	5	1	20.0
700-749	41	17	41.5	36	18	50.0	29	5	24.1
650-699	86	22	25.6	91	33	36.3	88	20	22.7
600-649	180	60	33.3	199	59	29.6	185	58	31.4
550-599	231	84	36.4	243	76	31.3	251	67	26.7
500-549	238	90	37.8	260	95	36.5	256	67	26.2
450-499	156	64	41.0	164	67	40.9	185	59	31.9
400-449	79	42	53.2	81	42	51.9	79	34	43.0
350-399	26	13	50.0	20	10	50.0	19	9	47.4
300-349	2	2	100.0	1	0	0	1	1	100.0
Total	1041			1099			1098		

*Percent of all cadets with scores in indicated range who were lost.

TABLE 8A

ATTRITION AND SAT-VERBAL SCORES, CLASSES OF 1979-80-81
(By Loss Category)

SAT-V Range	Class of 1979			Class of 1980			Class of 1981		
	Number in Range	Academic Motivation	Percent Lost*	Number in Range	Academic Motivation	Percent Lost	Number in Range	Academic Motivation	Percent Lost
750-800	2	0	0	4	0	0	5	0	20.0
700-749	41	9.8	29.3	36	8.3	38.9	29	0	20.7
650-699	86	0	24.4	91	3.3	30.8	88	2.3	18.2
600-649	180	4.4	25.0	199	3.5	24.6	185	4.3	23.2
550-599	231	5.6	27.7	243	4.9	24.3	251	3.6	19.5
500-549	238	8.0	26.9	260	5.0	28.1	256	4.7	16.8
450-499	156	7.7	26.9	164	9.1	27.4	185	8.1	21.1
400-449	79	19.0	30.4	81	11.1	34.6	79	16.5	21.5
350-399	26	23.1	19.2	20	20.0	30.0	19	10.5	21.1
300-349	2	0	0	1	0	0	1	100.0	0
	1041			1099			1098		

*Percent of all cadets with scores in range who were lost for reason indicated.

TABLE 9

ATTRITION AND SAT-MATH SCORES, CLASSES OF 1979-80-81
(Total Attrition)

SAT-M Range	Class of 1979			Class of 1980			Class of 1981		
	Number Entered	Number Lost	Percent*	Number Entered	Number Lost	Percent	Number Entered	Number Lost	Percent
750-800	44	9	20.5	72	21	29.2	45	16	35.6
700-749	161	47	29.2	183	55	30.1	149	42	28.2
650-699	229	71	31.0	261	79	30.3	236	55	23.3
600-649	276	113	40.9	278	96	34.5	347	98	28.2
550-599	188	75	39.9	188	87	46.3	206	67	32.5
500-549	125	62	49.6	106	57	53.8	96	35	36.5
450-499	16	13	81.2	11	6	54.5	18	9	50.0
400-449	2	2	100.0	0	0	0	1	1	100.0
Total	1041			1099			1098		

*Percent of all cadets with scores in indicated range who were lost.

TABLE 9A

ATTRITION AND SAT-MATH SCORES, CLASSES OF 1979-80-81
(By Loss Category)

SAT-M Range	Class of 1979			Class of 1980			Class of 1981					
	Number in Range	Academic Motivation	Other	Number in Range	Academic Motivation	Other	Number in Range	Academic Motivation	Other			
750-800	44	2.3	15.9	2.3	72	1.4	27.8	0	45	0	26.7	8.9
700-749	161	1.9	26.1	1.2	183	2.2	25.7	2.2	149	2.0	20.8	5.4
650-699	229	3.5	24.0	3.5	261	3.4	24.1	2.6	236	3.0	17.4	2.9
600-649	276	5.8	31.9	3.2	278	4.7	27.0	2.9	347	5.5	19.0	5.8
550-599	188	10.6	22.3	6.9	188	10.6	31.9	3.7	206	7.3	21.4	5.9
500-549	125	16.8	30.4	2.4	106	16.0	31.1	6.6	96	13.5	19.8	5.1
450-499	16	43.8	25.0	12.6	11	18.2	36.4	0	18	22.2	27.8	0
400-449	2	50.0	50.0	0	0	0	0	0	1	100.0	0	0
	1041				1099				1098			

*Percent of all cadets with scores in range who were lost for reason indicated.

TABLE 10

ATTRITION AND ACT-ENGLISH SCORES, CLASSES OF 1979-80-81
(Total Attrition)

ACT-E Range	Class of 1979			Class of 1980			Class of 1981		
	Number Entered	Number Lost	Percent*	Number Entered	Number Lost	Percent	Number Entered	Number Lost	Percent
34-36	0	0	0	0	0	0	0	0	0
31-33	5	1	20.0	4	2	50.0	5	2	40.0
28-30	23	7	30.4	27	7	25.9	22	3	13.6
25-27	50	22	44.0	63	31	49.2	58	21	36.2
22-24	147	54	36.7	152	72	47.4	136	49	36.0
19-21	121	43	35.5	106	49	46.2	107	41	38.3
16-18	40	17	42.5	29	13	44.8	30	12	40.0
13-15	6	3	50.0	4	3	75.0	6	5	83.3
10-12	0	0	0	0	0	0	1	1	100.0
Total	392			385			365		

*Percent of all cadets with scores in indicated range who were lost.

TABLE 10A

ATTRITION AND ACT-ENGLISH SCORES, CLASSES OF 1979-80-81
(By Loss Category)

ACT-E Range	Class of 1979			Class of 1980			Class of 1981								
	Number in Range	Acad- emic	Moti- vation	Other	Percent Lost*	Number in Range	Acad- emic	Moti- vation	Other	Percent Lost	Number in Range	Acad- emic	Moti- vation	Other	Percent Lost
34-36	0	0	0	0	0	0	0	0	0	0	0	0	0	0	0
31-33	5	0	20.0	0	0	4	0	50.0	0	0	5	0	40.0	0	0
28-30	23	0	30.4	0	0	27	3.7	22.2	0	0	22	0	13.6	0	0
25-27	50	4.0	38.0	2.0	2.0	63	3.2	42.9	3.2	3.2	58	1.7	29.3	5.2	5.2
22-24	147	3.4	31.3	2.0	2.0	152	5.3	38.2	3.9	3.9	136	5.1	24.3	6.6	6.6
19-21	121	9.1	23.1	3.3	3.3	106	6.6	38.7	0.9	0.9	107	10.3	23.4	4.7	4.7
16-18	40	10.0	27.5	5.0	5.0	29	13.8	24.1	6.9	6.9	30	13.3	23.3	33.3	33.3
13-15	6	33.3	16.7	0	0	4	0	75.0	0	0	6	66.7	16.7	0	0
10-12	0	0	0	0	0	0	0	0	0	0	1	0	0	0	100.0
Total	392					385					365				

*Percent of all cadets with scores in range who were lost for reason indicated.

TABLE 11
 ATTRITION AND ACT-MATH SCORES, CLASSES OF 1979-80-81
 (Total Attrition)

ACT-M Range	Class of 1979			Class of 1980			Class of 1981		
	Number Entered	Number Lost	Percent*	Number Entered	Number Lost	Percent	Number Entered	Number Lost	Percent
34-36	44	16	36.4	26	11	42.3	31	9	28.9
31-33	63	15	23.8	61	14	23.0	54	15	27.8
28-30	150	66	44.0	174	81	46.6	120	40	33.3
25-27	108	35	32.4	100	53	53.0	142	61	43.0
22-24	27	15	55.6	19	14	73.7	17	9	52.9
19-21	0	0	0	4	4	100.0	1	0	0
16-18	0	0	0	1	0	0	0	0	0
Total	392			385			365		

*Percent of all cadets with scores in indicated range who were lost.

TABLE 11A
 ATTRITION AND ACT-MATH SCORES, CLASSES OF 1979-80-81
 (By Loss Category)

ACT-M Range	Class of 1979			Class of 1980			Class of 1981					
	Number in Range	Acad- emic	Moti- vation	Other	Number in Range	Acad- emic	Moti- vation	Other	Number in Range	Acad- emic	Moti- vation	Other
34-36	44	0	34.1	2.3	26	3.8	34.6	3.8	31	0	25.8	5.2
31-33	63	4.8	19.0	0	61	1.6	21.3	0	54	3.7	15.0	11.1
28-30	150	5.3	36.7	2.0	174	5.7	37.4	3.4	120	4.2	26.7	2.5
25-27	108	6.5	21.3	4.6	100	6.0	43.0	4.0	142	12.7	24.6	5.6
22-24	27	22.2	29.6	3.7	19	15.8	57.9	0	17	11.8	35.3	5.9
19-21	0	0	0	0	4	25.0	75.0	0	1	0	0	0
16-18	0	0	0	0	1	0	0	0	0	0	0	0
Total	392				385				365			

*Percent of all cadets with scores in range who were lost for reason indicated.

TABLE 12
 ATTRITION AND ACT-NATURAL SCIENCE SCORES, CLASSES OF 1979-80-81
 (Total Attrition)

ACT-NS Range	Class of 1979			Class of 1980			Class of 1981		
	Number Entered	Number Lost	Percent*	Number Entered	Number Lost	Percent	Number Entered	Number Lost	Percent
34-36	15	6	40.0	27	7	25.9	11	2	18.2
31-33	130	43	33.1	122	52	42.6	131	43	32.8
28-30	123	47	38.2	136	72	52.9	121	39	32.2
25-27	60	24	40.0	61	27	44.3	67	30	44.8
22-24	38	14	36.8	26	13	50.0	21	11	52.4
19-21	21	11	52.4	11	6	54.5	10	7	70.0
16-18	4	2	50.0	2	0	0	3	1	33.3
13-15	1	0	0	0	0	0	1	1	100.0
Total	392			385			365		

*Percent of all cadets with scores in indicated range who were lost.

TABLE 12A

ATTRITION AND ACT-NATURAL SCIENCE SCORES, CLASSES OF 1979-80-81
(By Loss Category)

ACT-NS Range	Class of 1979			Class of 1980			Class of 1981					
	Number in Range	Percent Lost* Aca- demic	Moti- vation	Other	Number in Range	Percent Lost Aca- demic	Moti- vation	Other	Number in Range	Percent Lost Aca- demic	Moti- vation	Other
34-36	15	0	40.0	0	27	7.4	18.5	0	11	0	18.2	0
31-33	130	3.1	27.7	2.3	122	2.5	36.1	4.1	131	3.1	24.4	5.3
28-30	123	4.1	30.9	3.3	136	9.6	41.2	2.2	121	9.1	18.2	5.0
25-27	60	8.3	31.7	0	61	3.3	37.7	3.3	67	9.0	34.3	1.5
22-24	38	13.2	21.1	2.6	26	7.7	42.3	0	21	9.5	5.0	14.3
19-21	21	19.0	23.8	9.5	11	0	45.5	9.1	10	40.0	20.0	10.0
16-18	4	25.0	25.0	0	2	0	0	0	3	0	0	33.3
13-15	1	0	0	0	0	0	0	0	1	0	100.0	0
Total	392				385				365			

*Percent of all cadets with scores in range who were lost for reason indicated.

UNCLASSIFIED

SECURITY CLASSIFICATION OF THIS PAGE (When Data Entered)

REPORT DOCUMENTATION PAGE		READ INSTRUCTIONS BEFORE COMPLETING FORM
1. REPORT NUMBER 14 80-001	2. GOVT ACCESSION NO.	3. RECIPIENT'S CATALOG NUMBER
4. TITLE (and Subtitle) 6 ATTRITION AND ADMISSION SCORES, CLASSES OF 1979-80-81		5. TYPE OF REPORT & PERIOD COVERED
		6. PERFORMING ORG. REPORT NUMBER
7. AUTHOR(s) 10 John W. Houston		8. CONTRACT OR GRANT NUMBER(s) 12, 282
9. PERFORMING ORGANIZATION NAME AND ADDRESS Office of the Director of Institutional Research United States Military Academy West Point, New York 10996		10. PROGRAM ELEMENT, PROJECT, TASK AREA & WORK UNIT NUMBERS Project No. 317
11. CONTROLLING OFFICE NAME AND ADDRESS Same as #9 above.		12. REPORT DATE 11 Nov 1979
14. MONITORING AGENCY NAME & ADDRESS (If different from Controlling Office) United States Military Academy West Point, New York 10996		13. NUMBER OF PAGES 26 + i
		15. SECURITY CLASS. (of this report) Unclassified
		15a. DECLASSIFICATION/DOWNGRADING SCHEDULE
16. DISTRIBUTION STATEMENT (of this Report) Approved for public release; distribution unlimited.		
17. DISTRIBUTION STATEMENT (of the abstract entered in Block 20, if different from Report)		
18. SUPPLEMENTARY NOTES		
19. KEY WORDS (Continue on reverse side if necessary and identify by block number) Admission Scores Class of 1981 Attrition Retention Class of 1979 Separations Class of 1980		
20. ABSTRACT (Continue on reverse side if necessary and identify by block number) This report shows the relationships between admission scores and losses from the Class of 1979 through graduation, and losses from the Classes of 1980 and 1981 through 30 September 1979. A chi-square test for significance was calculated for total losses for each class with each admission variable. Conclusions are: (a) the CEER score is a better predictor of total losses than any of its components; and (b) the Whole Candidate Score is a better predictor of total losses than LPS, PAE, or any of the individual CEER components.		