

AD-A080 952

ARMY INVENTORY RESEARCH OFFICE PHILADELPHIA PA

F/G 15/5

A NOTE ON INITIAL FILL RATE.(U)

FEB 80 A J KAPLAN

UNCLASSIFIED

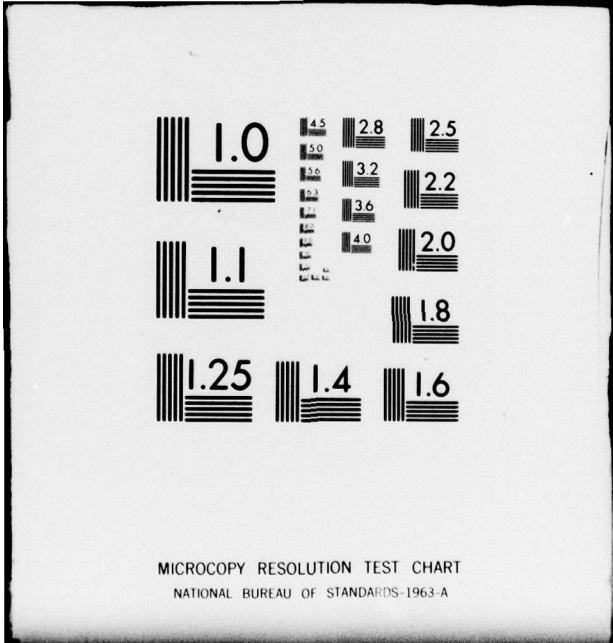
IRO-TR-80-1

NL

1 OF 1  
AD-  
A080952



END  
DATE  
FILMED  
2-80  
DDC



MICROCOPY RESOLUTION TEST CHART  
NATIONAL BUREAU OF STANDARDS-1963-A

10  
AS

LEVEL II

AD-  
TECHNICAL REPORT  
TR 80-1

ADA 080952

A NOTE ON  
INITIAL FILL RATE



DDC FILE COPY

U.S. ARMY  
INVENTORY  
RESEARCH  
OFFICE

FEBRUARY 1980

DTIC  
ELECTE  
S FEB 22 1980 D  
B

ROOM 800  
U.S. CUSTOM HOUSE  
2nd and Chestnut Streets  
Philadelphia Pa. 19106

80 2 21 015

Approved for Public Release; Distribution Unlimited

Information and data contained in this document are based on input available at the time of preparation. Because the results may be subject to change, this document should not be construed to represent the official position of the U.S. Army Materiel Command unless so stated.

REPORT DOCUMENTATION PAGE		READ INSTRUCTIONS BEFORE COMPLETING FORM
1. REPORT NUMBER	2. GOVT ACCESSION NO.	3. RECIPIENT'S CATALOG NUMBER
4. TITLE (and Subtitle)		5. TYPE OF REPORT & PERIOD COVERED
6. A NOTE ON INITIAL FILL RATE .		9. Technical Report.,
7. AUTHOR(s)		6. PERFORMING ORG. REPORT NUMBER
10. ALAN J. KAPLAN		8. CONTRACT OR GRANT NUMBER(s)
9. PERFORMING ORGANIZATION NAME AND ADDRESS US Army Inventory Research Office, ALMC Room 800, US Custom House, 2nd & Chestnut Sts. Philadelphia, PA 19106		10. PROGRAM ELEMENT, PROJECT, TASK AREA & WORK UNIT NUMBERS
11. CONTROLLING OFFICE NAME AND ADDRESS US Army Materiel Development & Readiness Command 5001 Eisenhower Avenue Alexandria, VA 22333		12. REPORT DATE 11 Feb 1980
14. MONITORING AGENCY NAME & ADDRESS (if different from Controlling Office)		13. NUMBER OF PAGES 14
12 17		15. SECURITY CLASS. (of this report)  UNCLASSIFIED
		15a. DECLASSIFICATION/DOWNGRADING SCHEDULE
16. DISTRIBUTION STATEMENT (of this Report)  Approved for Public Release; Distribution Unlimited		
17. DISTRIBUTION STATEMENT (of the abstract entered in Block 20, if different from Report)		
14 IRO-TR-80-1		
18. SUPPLEMENTARY NOTES Information and data contained in this document are based on input available at the time of preparation. Because the results may be subject to change, this document should not be construed to represent the official position of the US Army Materiel Development & Readiness Command unless so stated.		
19. KEY WORDS (Continue on reverse side if necessary and identify by block number) EQQ Reorder Points Performance		
20. ABSTRACT (Continue on reverse side if necessary and identify by block number) A common measure of customer service is initial fill rate, the percent of demand satisfied without delay from stock on hand. An exact expression for initial fill rate when demand is Compound Poisson has previously been developed. This note presents an approximation which is simple to program and relatively quick to run. Its accuracy is distribution dependent. For Negative Binomial distribution of demand, its accuracy is evaluated and found to be good. A common alternative approach to calculate initial fill is shown to work very badly for one class of items.		

TABLE OF CONTENTS

	<u>Page</u>
TABLE OF CONTENTS.....	1
1. SUMMARY.....	2
2. APPROXIMATION.....	2
3. COMPUTATIONAL CONSIDERATIONS.....	4
4. EVALUATION.....	5
5. CONCLUDING REMARKS.....	8
REFERENCES.....	9
APPENDIX.....	10
DISTRIBUTION.....	12

**DTIC**  
**ELECTE**  
FEB 22 1980  
**S** **D**  
**B**

ACCESSION for	
NTIS	White Section <input checked="" type="checkbox"/>
DOC	Buff Section <input type="checkbox"/>
UNANNOUNCED	<input type="checkbox"/>
JUSTIFICATION _____	
BY _____	
DISTRIBUTION/AVAILABILITY CODES	
Dist.	AVAIL. and/or SPECIAL
<b>A</b>	

## A NOTE ON INITIAL FILL RATE

### 1. Summary

A common measure of customer service is initial fill rate, the percent of demand satisfied without delay from stock on hand. Silver has developed an exact expression for initial fill rate when demand is Compound Poisson. This note presents an approximation which is far simpler to program, and much less time consuming to run. Its accuracy is distribution dependent. For Negative Binomial distribution of demand, its accuracy is evaluated and found to be good. The Negative Binomial was chosen because of its use in a standard US Army inventory system (3), and its general suitability for modelling demand.

Other assumptions are that unfilled demand is backlogged, that the Negative Binomial parameters are known, and that a continuous review reorder point, order-up-to-level policy is used. Because transaction size may exceed one, inventory at the time of an order may be below the reorder point. The difference is termed the deficit.

#### Notation:

R - reorder point

M - order-up-to-level

Q - reorder quantity for zero deficit (M-R)

Z - deficit

X - lead time demand

S - transaction size

$f(x)$ ,  $t(z)$ ,  $h(s)$  are probability mass functions for X, Z, S.

$IF(r,q) \equiv$  initial fill rate assuming every deficit is zero, the reorder point is r, and the reorder quantity is q.

$$G(r,q) \equiv IF(r,q) \cdot q$$

$$Z_1 \equiv E_x (Z | Z < R)$$

### 2. Approximation

Full understanding of this section requires a review of Silver's (6)

paper. From Silver's paper (equation top of p.96), it follows

$$(1) \quad G(r,q) = q \sum_{x=0}^r f(x) + \sum_{x=r+1}^{r+q} (r+q-x)f(x)$$

By using the function  $G(r,q)$ , Silver's equation (11) can be revealingly rewritten as:

$$(2) \quad \text{Initial Fill Rate} = \frac{1}{Q+E(Z)} \sum_{z=0}^R t(z)G(R-z, Q+z) + \text{pr}(z > R)G(0, R+Q)$$

or

$$\frac{1}{Q+E(Z)} \sum_{z=0}^{R-1} t(z)G(R-z, Q+z) + \text{pr}(z \geq R)G(0, R+Q)$$

The first step in the approximation is to set

$$(3) \quad \sum_{z=0}^{R-1} t(z)G(R-z, Q+z) \approx \text{Pr}(z < R)G(R-Z_1, Q+Z_1)$$

The second step in the approximation is to represent the distribution of the number of units demanded per transaction by the geometric distribution. For the geometric it is known (cf Silver, Ho, Deemer) that the distribution of the deficit is the same as the distribution of transaction size plus 1; i.e. if  $W$  is the amount by which inventory exceeds  $R$ ,

$$[h(s+w-1) | s > w-1] = h(s) = t(s-1)$$

Defining the geometric function:

$$h(s) \equiv pq^{s-1} \quad q+p=1$$

Then \*

$$(4a) \quad \sum_{s=a}^b h(s) = p \sum_{s=a-1}^{b-1} q^s = q^{a-1} - q^b$$

---

\* I first saw these results in notes by Richard Urbach.

$$(4b) \quad \sum_{s=a}^b s h(s) = p \sum_{s=a}^b s q^{s-1} = p \frac{d}{dq} \sum_{s=a}^b q^s$$

and omitting some algebra (found in Appendix)

$$= q^{a-1} [a+q/p] - q^b [(b+1) + q/p]$$

Using Equations (2), (3) and (4) and some algebra (found in Appendix)

(5) Initial Fill Rate  $\approx$

$$\frac{1}{Q+E(s)-1} \left\{ (1-q)^{R+1} G(R-Z_1, Q+Z_1) + q^{R+1} G(0, R+Q) \right\}$$

$$Z_1 = \frac{1}{1-q^R} \left\{ \frac{1}{p} - q^R \left[ R + \frac{1}{p} \right] \right\}$$

### 3. Computational Considerations

Programming Equation (5). The Negative Binomial probability mass function is easily calculated by computer. If the function is defined

$$(6) \quad f(x; w, u, v) = u^w v^x \left( \frac{x+w-1}{x} \right)$$

$$u+v=1.$$

$$\text{Mean} = \frac{wv}{u}$$

$$\text{Var} = \text{MEAN}/u$$

Then:

$$(7) \quad f(0; w, u, v) = u^w$$

$$f(x; w, u, v) = f(x-1; u, v, w)(v)(x+w-1)/x$$

One problem which does arise is that  $R-Z_1$ ,  $Q+Z_1$  need not be integer while the negative Binomial is defined only for integer values. Our solution was to interpolate: e.g. if "fr" is a fractional value

$$(8) \quad f(x+fr; w, u, v) = (fr) f(x+1; w, u, v) + (1-fr) f(x; w, u, v)$$

Camp Paulson Transformation. The Negative Binomial Cumulative Distribution Function may be approximated by the Normal, provided the value at which the c.d.f. is evaluated is transformed in the manner devised by Camp Paulson.\* (In other words if we wish to know the probability demand is  $\leq X$ , we transform  $X$  to  $X'$  and find the probability a standard normal is  $\leq X'$ ). Furthermore<sup>(2)</sup>,

$$(9) \quad \sum_{x=0}^B x f(x; w, u, v) = \frac{wv}{u} \sum_{x=0}^{B-1} f(x; w+1, u, v)$$

Letting  $B = M$ , and then  $R$ , we see that  $G(r, q)$  can be expressed as a function of Negative Binomial c.d.f.'s, and then evaluated using the Camp Paulson approximation. The Camp Paulson approach is useful when lead time demand can be high, and incidentally eliminates any need to interpolate to treat non-integer values as in equation (8).

Computational Comparison of Approaches. Even if the deficit is ignored  $G(r, q)$  must be computed. The approximate algorithm requires evaluation of  $G(r, q)$  at two different points and not much extra programming. As compared to the exact approach, it eliminates the need to compute the deficit distribution, and to evaluate  $G(r, q)$  at a possibly large number of different points.

#### 4. Evaluation

The evaluation compared:

"Exact"	Silver's formula
"Approx"	Approximation as given in equation (5)

\* See reference (1) or (2). In (1), the minus sign before 2nd term in equation (7) definition of  $z$ , should read plus.

"Approx/CP"      Approximation using Camp Paulson  
"Ignore"          Use IF(R,Q), ignoring the impact of the deficit.

"Ignore" might also have been characterized as "Poisson-Extended", as an alternative derivation of "Ignore" is:

- a. Write down the expression for initial fill under Poisson demand.
- b. Replace the Poisson c.d.f. with the Compound Poisson c.d.f. (or perhaps some other such as Normal or Laplace).

The equivalence of the result from step (b) and equation (1) can be shown with some algebra and calculus (see Appendix). As "Poisson Extended", "Ignore" is commonly incorporated into inventory models; e.g., see (2), (5).

Inspection of the tabulated results of the evaluation confirms that when  $\bar{S}$  is large relative to lead time demand, the deficit distribution must be considered. Silver calls such items "erratic demand" items. "Approx" and "Approx/CP" work equally well. However, their error does not decrease as the deficit distribution becomes less important - focus on the case where  $\bar{X} = 10$ ,  $\bar{S} = 2$  - even though in the limit as  $S \rightarrow 1$ , "Approx" and "Ignore" must converge to "Exact".

The impact of equation (3), taken by itself, is to produce results between "Exact" and "Ignore". When more of the deficit distribution is larger than R, equation (3) has less impact, so with the exception of the (10,2) cases, approx does better for  $R = \bar{X}$  than for  $R = 2\bar{X}$ .\*

The other aspect of the approximation is use of the Geometric to characterize transaction sizes instead of the Logarithmic distribution implied by use of the Negative Binomial (4) and incorporated into "Exact". Additional runs on the (10,2) cases showed this was not a problem; in fact, the impact of the Geometric by itself was to significantly understate initial fill.

Still other runs not shown verified that Approx worked well for expected demand and order size of (25,2), (25,5), (25,25), (50,2), (50,5), (50,25).

---

\* Even for the (10,2) case, if error is measured as a % of unfilled demand (e.g. .9%/(100%-94.1%), Approx does better when  $R = \bar{X}$ .

COMPARISON OF APPROACHES

$\bar{X}$	$\bar{S}$	R	Q	"Exact"	"Approx"	"Approx/CP"	"Ignore"
2	2	$\bar{X}$	$2\bar{S}$	70.2%	+0.6%	-0.6%	+11.8%
		$\bar{X}$	$5\bar{S}$	84.2%	+0.4%	-0.3%	+ 6.6%
		$2\bar{X}$	$2\bar{S}$	83.9%	+1.5%	+1.8%	+ 7.4%
		$2\bar{X}$	$5\bar{S}$	91.5%	+0.8%	+0.9%	+ 4.1%
2	4	$\bar{X}$	$2\bar{S}$	64.1%	-0.4%	+0.0%	+24.2%
		$\bar{X}$	$5\bar{S}$	79.8%	+0.3%	+0.3%	+14.0%
		$2\bar{X}$	$2\bar{S}$	72.5%	+0.6%	+1.2%	+19.4%
		$2\bar{X}$	$5\bar{S}$	84.5%	+0.7%	+0.8%	+11.1%
10	2	$\bar{X}$	$2\bar{S}$	62.2%	+2.1%	+2.3%	+ 6.1%
		$\bar{X}$	$5\bar{S}$	75.5%	+1.0%	+1.1%	+ 4.1%
		$2\bar{X}$	$2\bar{S}$	94.1%	+0.9%	+0.8%	+ 1.7%
		$2\bar{X}$	$5\bar{S}$	96.5%	+0.4%	+0.4%	+ 1.0%
10	5	$\bar{X}$	$2\bar{S}$	60.1%	+1.2%	+1.9%	+16.3%
		$\bar{X}$	$5\bar{S}$	74.4%	+1.1%	+1.3%	+10.9%
		$2\bar{X}$	$2\bar{S}$	79.6%	+3.0%	+3.1%	+ 9.9%
		$2\bar{X}$	$5\bar{S}$	87.0%	+1.9%	+1.8%	+ 6.4%
10	10	$\bar{X}$	$2\bar{S}$	56.8%	-0.7%	+0.1%	+26.7%
		$\bar{X}$	$5\bar{S}$	72.5%	+0.4%	+0.7%	+17.4%
		$2\bar{X}$	$2\bar{S}$	69.4%	+1.0%	+0.6%	+20.2%
		$2\bar{X}$	$5\bar{S}$	80.3%	+1.4%	+1.6%	+13.2%

## 5. Concluding Remarks

The approximation described in this note is not fully satisfying because it depends in part on the ability of the geometric to characterize transaction size. At the same time there are many items for which it is useful, and for which ignoring the deficit distribution is unthinkable.

In some applications the variability of lead time demand is increased as an approximate way of coping with lead time variability or uncertainty about the parameters of the lead time demand distribution. This is readily accommodated by the approximation, since it need only change the calculation of  $G(r,q)$ .

#### REFERENCES

- 1 Bartko, J.J., "Approximating the Negative Binomial," *Technometrics*, Vol 8, No. 2, 1966, 345-350.
- 2 Deemer, R.L., A.J. Kaplan and W.K. Kruse, "Application of Negative Binomial Probability to Inventory Control," US Army Inventory Research Office, Philadelphia, PA, 1974, AD A003225.
- 3 Deemer, R.L. and W.K. Kruse, "Evaluation of Several VSL/EOQ Models," US Army Inventory Research Office, Philadelphia, PA, 1974, AD 781948.
- 4 Johnson, Norman L. and Samuel Katz, Discrete Distributions, Houghton Mifflin, now John Wiley, 1969.
- 5 Peterson, Rein and Edward A. Silver, Decision Systems for Inventory Management and Production Planning, John Wiley and Sons, 1979.
- 6 Silver, Edward A., "Some Ideas Related to the Inventory Control of Items Having Erratic Demand Patterns," *INFOR*, Vol 8, 1970, 87-100.
- 7 Silver, Edward A., C.M. Ho, and R.L. Deemer, "Cost Minimizing Inventory Control of Items Having a Special Type of Erratic Demand Pattern," *INFOR*, Vol 9, 1971, 198-219.

APPENDIX

Backup to Equation 4b

$$p \frac{d}{dq} \sum_{x=a}^b q^x = p \frac{d}{dq} \frac{1}{1-q} [q^a - q^{b+1}]$$

$$= p \frac{[a q^{a-1} - (b+1) q^b](1-q) + q^a - q^{b+1}}{(1-q)^2} =$$

$$a q^{a-1} - (b+1) q^b + \frac{q^a - q^{b+1}}{p} =$$

$$q^{a-1} [a + q/p] - q^b [(b+1) - q/p]$$

Backup to Equation (5),  $Z_1$

$$\frac{\sum_{s=1}^R s h(s)}{\sum_{s=1}^R h(s)} = \frac{(1+q/p) - q^R [R+1 + q/p]}{1-q^R} =$$

$$\frac{(\frac{1}{p}) - q^R [R + \frac{1}{p}]}{1-q^R}$$

Backup to Equivalence of "Ignore" and "Poisson Extended"

For "Poisson Extended"

$$\text{Availability} = \frac{1}{Q} \sum_{x=R+1}^{R+Q} F(x-1) =$$

$$\frac{1}{Q} [QF(R) + \sum_{x=R+2}^{R+Q} \sum_{y=R+1}^{x-1} f(y)]$$

$$= \frac{1}{Q} [QF(R) + \sum_{x=R+1}^{R+Q-1} \sum_{y=R+1}^x f(y)]$$

Reversing the order of summation

$$\frac{1}{Q} [QF(R) + \sum_{y=R+1}^{R+Q-1} \sum_{x=y}^{R+Q-1} f(y)] =$$

$$F(R) + \frac{1}{Q} \sum_{y=R+1}^{R+Q-1} (M-1-y+1) f(y) =$$

$$F(R) + \frac{1}{Q} \sum_{y=R+1}^{R+Q-1} (M-y) f(y) =$$

"Ignore"

DISTRIBUTION

COPIES

<u>1</u>	Deputy Under Sec'y of the Army, ATTN: Office of Op Resch Headquarters, US Army Materiel Development & Readiness Command
<u>1</u>	DRCPA-S
<u>1</u>	DRCMS
<u>1</u>	DRCMM-RS
<u>1</u>	Dep Chf of Staff for Logistics, ATTN: DALO-SMS, Pentagon, Wash., DC 20310
<u>2</u>	Defense Logistics Studies Info Exchange, DRXMC-D
<u>10</u>	Defense Documentation Center, Cameron Sta., Alexandria, VA 22314
<u>1</u>	Commander, USA Armament Materiel Readiness Cmd, Rock Island, IL 61201
<u>1</u>	ATTN: DRSAR-MM
<u>1</u>	ATTN: DRSAR-SA
	Commander, USA Communications & Electronics Materiel Readiness Cmd, Ft. Monmouth, NJ 07703
<u>1</u>	ATTN: DRSEL-MM
<u>1</u>	ATTN: DRSEL-SA
	Commander, USA Missile Command, Redstone Arsenal, AL 35809
<u>1</u>	ATTN: DRSMI-S
<u>1</u>	ATTN: DRSMI-D
	Commander, USA Troop Support & Aviation Materiel Readiness Command, St. Louis, MO
<u>1</u>	ATTN: DRSTS-SP
<u>1</u>	ATTN: DRSTS-SPSS
<u>1</u>	ATTN: DRSTS-BA(1)
	Commander, US Army Tank-Automotive Materiel Readiness Command, Warren, MI 48090
<u>1</u>	ATTN: DRSTA-F
<u>1</u>	ATTN: DRSTA-S
<u>1</u>	Commander, US Army Tank-Automotive Research & Development Command, ATTN: DRDTA-V, Warren, MI 48090
<u>1</u>	Commander, US Army Armament Research & Development Command, ATTN: DRDAR-SE, Dover, NJ 07801
<u>1</u>	Commander, US Army Aviation Research & Development Command, St. Louis, MO 63166
<u>1</u>	Commander, US Army Communications Research & Development Command, ATTN: DRSEL-SA, Ft. Monmouth, NJ 07703
<u>1</u>	Commander, US Army Electronics Research & Development Command, ATTN: DRDEL-AP, Adelphi, MD 20783
<u>1</u>	Commander, US Army Mobility Equipment Research & Development Cmd, ATTN: DRDME-O, Ft. Belvoir, VA 22060
<u>1</u>	Commander, US Army Natick Research & Development Command, ATTN: DRXNM-O, Natick, MA 01760
<u>1</u>	Commander, US Army Logistics Center, Ft. Lee, VA 23801
<u>1</u>	Commander, US Army Logistics Evaluation Agency, New Cumberland Army Depot, New Cumberland, PA 17070

COPIES

1 Commander, US Air Force Logistics Cmd, WPAFB, ATTN: AFLC/XRS,  
Dayton, Ohio 45433

1 US Navy Fleet Materiel Support Office, Naval Support Depot,  
Mechanicsburg, PA 17055

1 Mr. James Prichard, Navy Sea Systems Cmd, ATTN: PMS3061, Dept  
of US Navy, Wash., DC 20362

1 George Washington University, Inst of Management Science & Engr.,  
707 22nd St., N.W., Wash., DC 20006

1 Naval Postgraduate School, ATTN: Dept of Opns Anal, Monterey,  
1 Air Force Institute of Technology, ATTN: SLGQ, Head Quantitative  
Studies Dept., Dayton, OH 43433

1 US Army Military Academy, West Point, NY 10996

1 Librarian, Logistics Mgt Inst., 4701 Sangamore Rd., Wash., DC 20016

1 University of Florida, ATTN: Dept of Industrial Systems Engr.,  
Gainesville, FL 32601

1 RAND Corp., ATTN: S. M. Drezner, 1700 Main St., Santa Monica,  
CA 90406

1 US Army Materiel Systems Analysis Activity, ATTN: DRXSY-CL,  
Aberdeen Proving Ground, MD 21005

1 Commander, US Army Logistics Center, ATTN: Concepts & Doctrine  
Directorate, Ft. Lee, VA 23801

1 ALOG Magazine, ATTN: Tom Johnson, USALMC, Ft. Lee, VA 23801

1 Commander, USDRC Automated Logistics Mgt Systems Activity,  
P.O. Box 1578, St. Louis, MO 63188

1 Director, DARCOM Logistics Systems Support Agency, Letterkenny  
Army Depot, Chambersburg, PA 17201

1 Commander, Materiel Readiness Support Activity, Lexington, KY 40507

1 Director, Army Management Engineering Training Agency, Rock Island  
Arsenal, Rock Island, IL 61202

1 Defense Logistics Agency, Cameron Sta, Alexandria, VA 22314

1 Operations Research Center, 3115 Etcheverry Hall, University  
of California, Berkeley, CA 94720

1 Dr. Jack Muckstadt, Dept of Industrial Engineering & Operations  
Research, Upson Hall, Cornell University, Ithaca, NY 14890

1 Prof Herbert P. Galliher, Dept of Industrial Engineering,  
University of Michigan, Ann Arbor, MI 48104

1 Mr. Ellwood Hurford, Scientific Advisor, ATCL-SCA, Army Logistics  
Center, Ft. Lee, VA 23801

1 Prof Robert M. Stark, Dept of Stat & Computer Sciences,  
University of Delaware, Newark, DE 19711

1 Prof E. Gerald Hurst, Jr., Dept of Decision Science, The Wharton  
School, University of Penna., Phila., PA 19174

1 Logistics Studies Office, DRXMC-LSO, ALMC, Ft. Lee, VA 23801

1 Procurement Research Office, DRXMC-PRO, ALMC, Ft. Lee, VA 23801

1 Dept of Industrial Engr. & Engr. Management, Stanford University,  
Stanford, CA 94305

1 Commander, US Army Communications Command, ATTN: Dr. Forrey,  
CC-LOG-LEO, Ft. Huachuca, AZ 85613

COPIES

- 1 Commander, US Army Test & Evaluation Cmd, ATTN: DRSTE-SY,  
Aberdeen Proving Ground, MD 21005
- 1 Prof Harvey M. Wagner, Dean, School of Business Adm, University  
of North Carolina, Chapel Hill, NC 27514
- 1 Dr. John Voelker, EES Bldg. 11, Argonne National Laboratory,  
9700 S. Cass Ave., Argonne, IL 60439
- 1 DARCOM Intern Training Center, Red River Army Depot, Texarkana,  
Tx 75501
- 1 Prof Leroy B. Schwarz, Dept of Management, Purdue University,  
Krannert Bldg, West Lafayette, Indiana 47907
- 1 US Army Training & Doctrine Command, Ft. Monroe, VA 23651
- 1 Operations & Inventory Analysis Office, NAVSUP (Code 04A) Dept  
of Navy, Wash., DC 20376
- 1 US Army Research Office, ATTN: Robert Launer, Math. Div.,  
P.O. Box 12211, Research Triangle Park, NC 27709
- 1 Prof William P. Pierskalla, 3641 Locust Walk CE, Philadelphia,  
PA 19104
- 1 US Army Materiel Systems Analysis Activity, ATTN: DRXSY-MP,  
Aberdeen Proving Ground, MD 21005
- 1 Air Force Logistics Management Center, ATT: AFLMC/LGY,  
Gunter Air Force Station, AL 36114
- 1 Engineer Studies Center, 6500 Brooks Lane, Wash., DC 20315
- 1 US Army Materiel Systems Analysis Activity, ATTN: Mr. Herbert  
Cohen, DRXSY-MP, Aberdeen Proving Ground, MD 21105
- 1 Commandant, ALMC, ATTN: Jon T. Miller, DAS, DRXMC-A, Ft. Lee, VA  
23801
- 1 Prof Edward A. Silver, University of Waterloo, Faculty of Engr.,  
Dept of Mgt Science, Waterloo, Ontario, Canada N2L 3G1