

AD-A080 987

NEW YORK UNIV NY DEPT OF APPLIED SCIENCE

F/G 20/4

A TWO DIMENSIONAL COMPRESSIBLE, NONLINEAR STABILITY ANALYSIS WI--ETC(U)

OCT 79 G MILLER, A CALLEGARI

N00014-76-C-0183

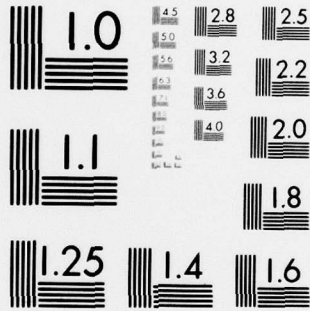
NL

UNCLASSIFIED

NYU/DAS-79/16

OF
AD
A080987

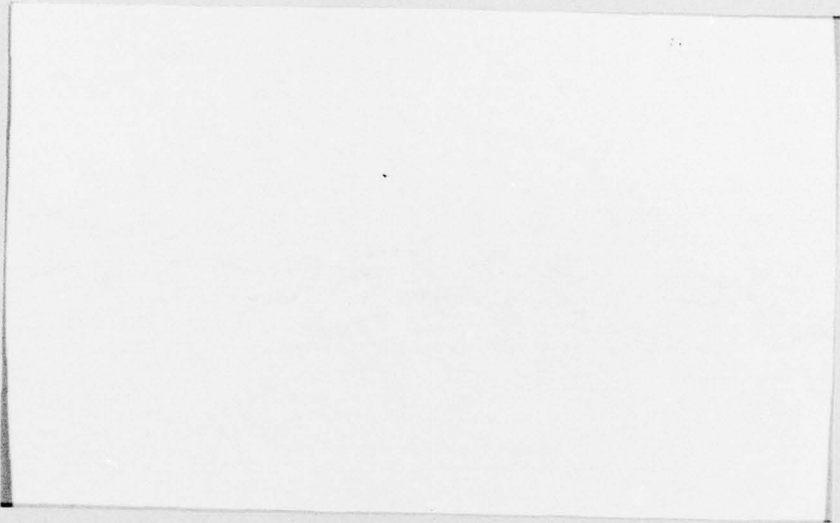




MICROCOPY RESOLUTION TEST CHART
NATIONAL BUREAU OF STANDARDS-1963-A

LEVEL II (12) SK

ADA 080987



DDC FILE COPY



DDC
REFMIE
FEB 20 1980
REGLIVE
A

NEW YORK UNIVERSITY
FACULTY OF ARTS AND SCIENCE
DEPARTMENT OF APPLIED SCIENCE

DISTRIBUTION STATEMENT A
Approved for public release
Distribution Unlimited

80 2 19 041

A TWO-DIMENSIONAL COMPRESSIBLE, NONLINEAR
STABILITY ANALYSIS WITH APPLICATIONS TO
THE STUDY OF BOUNDARY LAYER TRANSITION

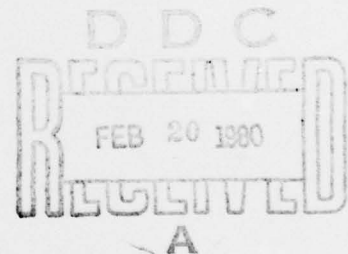
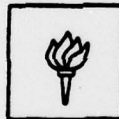
Gabriel Miller & Andrew Callegari

NYU/DAS 79-16

OCTOBER 1979

FINAL REPORT

DEPARTMENT OF THE NAVY*
OFFICE OF NAVAL RESEARCH



* Contract No. N00014-76-C-0183

NEW YORK UNIVERSITY
FACULTY OF ARTS AND SCIENCE
DEPARTMENT OF APPLIED SCIENCE

UNCLASSIFIED

SECURITY CLASSIFICATION OF THIS PAGE (When Data Entered)

REPORT DOCUMENTATION PAGE		READ INSTRUCTIONS BEFORE COMPLETING FORM
1. REPORT NUMBER	2. GOVT ACCESSION NO.	3. RECIPIENT'S CATALOG NUMBER
6. TITLE (and Subtitle) A TWO DIMENSIONAL COMPRESSIBLE, NONLINEAR STABILITY ANALYSIS WITH APPLICATIONS TO THE STUDY OF BOUNDARY LAYER TRANSITION.		5. TYPE OF REPORT & PERIOD COVERED 9/15/77 - 5/15/78
7. AUTHOR(s) 10. GABRIEL MILLER AND ANDREW CALLEGARI		8. PERFORMING ORG. REPORT NUMBER 14. NYU/DAS-79/16 9. CONTRACT OR GRANT NUMBER(s) 15. N00014-76-C-0183
9. PERFORMING ORGANIZATION NAME AND ADDRESS NEW YORK UNIVERSITY/DEPARTMENT OF APPLIED SCIENCE 26-36 STUYVESANT STREET (BARNEY BUILDING) NEW YORK, NEW YORK 10003		10. PROGRAM ELEMENT, PROJECT, TASK AREA & WORK UNIT NUMBERS NR 061 232
11. CONTROLLING OFFICE NAME AND ADDRESS OFFICE OF NAVAL RESEARCH/DEPARTMENT OF THE NAVY (CODE430B) 800 N. QUINCY ST., ARLINGTON, VA. 22217		12. REPORT DATE September 1979
14. MONITORING AGENCY NAME & ADDRESS (if different from Controlling Office) 12. 34		13. NUMBER OF PAGES 25 + 4
16. DISTRIBUTION STATEMENT (of this Report) APPROVED FOR PUBLIC RELEASE; DISTRIBUTION UNLIMITED 9. Final rept. 15 Sep 77 - 15 May 78		15. SECURITY CLASS. (of this report) N/A
17. DISTRIBUTION STATEMENT (of the abstract entered in Block 20, if different from Report) N/A 11. Oct 79		15a. DECLASSIFICATION/DOWNGRADING SCHEDULE
18. SUPPLEMENTARY NOTES		
19. KEY WORDS (Continue on reverse side if necessary and identify by block number) ACOUSTICAL DISTURBANCES BOUNDARY LAYER TRANSITION STABILITY		
20. ABSTRACT (Continue on reverse side if necessary and identify by block number) A computer program which can investigate the nonlinear response of a compressible boundary layer on a flat plate to any imposed external disturbance has been produced. The program first computes the boundary condition near the leading edge utilizing linear stability theory and then determines the disturbance field downstream as a function of time, utilizing the Mac-Cormack time splitting explicit technique. The program originally created to provide a fundamental understanding		

DD FORM 1473, EDITION OF 1 NOV 65 IS OBSOLETE

UNCLASSIFIED

SECURITY CLASSIFICATION OF THIS PAGE (When Data Entered)

409964

500

Unclassified

SECURITY CLASSIFICATION OF THIS PAGE(When Data Entered)

of boundary layer response to acoustical disturbances has been modified so that a wide range of parameters can be varied. The effects of Mach number and wall conditions can be computed utilizing the program.

SECURITY CLASSIFICATION OF THIS PAGE(When Data Entered)

ACKNOWLEDGEMENT

This technical report is a final report of work performed under Contract N00014-76-C-0183 from 15 September 1977 through 15 May 1978. The program was sponsored by the Office of Naval Research. The authors wish to thank Mr. Morton Cooper for his continuous support during the three years of the investigation.

Accession For	
NTIS (Full)	<input checked="" type="checkbox"/>
DTIC (Full)	<input type="checkbox"/>
Unannounced	<input type="checkbox"/>
Justification	
By	
Organization	
Availability Codes	
Avail and/or	
Special	

A

TABLE OF CONTENTS

I.	INTRODUCTION	1
II.	METHOD OF ANALYSIS	3
	A. Equations of Motion	3
	B. Initial and Boundary Conditions	5
III.	RESULTS UTILIZING PROGRAM	11
IV.	PROGRAM CAPABILITIES	13
	REFERENCES	14
	FIGURE	16 -17
	DISTRIBUTION	18 -25

A TWO-DIMENSIONAL COMPRESSIBLE, NONLINEAR
STABILITY ANALYSIS WITH APPLICATIONS TO
THE STUDY OF BOUNDARY LAYER TRANSITION

I. INTRODUCTION

Recent analytical efforts to gain a more comprehensive understanding of boundary layer stability have centered on (1) the coupling between the principle linear wave (the Tollmien-Schlichting wave) and its principle harmonics (for example, [1]) and (2) on the development of computer codes to study the nonlinear effects of disturbances propagating through an incompressible boundary layer field (for example, Refs. 2, 3, 4). Such investigations extended the earlier incompressible and compressible linear stability analyses (for example, Refs. 5-9) which analyzed the linear stability problem both from spacial and temporal growth processes.

The recent efforts have been motivated by analysis¹⁰ and experiments^{11,12,13} which indicated that the process of disturbance growth and instability leading to transition could be subdivided into distinct regions, where first linear, and then nonlinear and three dimensional effects predominate.

Two dimensional nonlinear codes can thus be extremely important tools if one is to properly stimulate the three dimensional bursting phenomenon of transition to turbulence, since such codes can provide the initial conditions for such analysis (similar to the effect of the linear codes which provide the initial conditions for the nonlinear analyses).

While the nonlinear codes available represent a significant advance in computational capability, they have thus far been restricted to incompressible flow calculations. Such programs are unable to analyze the effects of

Mach number, wall temperature, imposed disturbance propagation velocity, etc.

Experiments^{14, 15} have indicated that imposed acoustical disturbances effect transition in a low speed flow in a manner similar to free stream turbulence, even though the propagation velocity of the disturbances are as much as two orders of magnitude greater. The frequency range which effects transition at a given Reynolds number is similar to the range associated with freestream turbulence, even though there is a mismatch in freestream propagation velocity (and thus in freestream wave number).

The purpose of the study at New York University for the past three years was to ascertain the mechanisms which cause acoustical disturbances to effect transition in this manner and to develop a computer code which includes both nonlinear effects and the effects of compressibility. The unsteady, two-dimensional, compressible second order boundary layer equations (retaining terms of the order of the reciprocal of Reynolds number squared) have been computed numerically¹⁶. The system, consistent with the Navier Stokes equations, have been solved by MacCormack explicit scheme with time splitting¹⁷. In Section II the equations utilized and the method of analysis is developed. Results utilizing the program are presented in Section III. A description of the program's capabilities can be found in Section IV.

II. METHOD OF ANALYSIS

A. Equations of Motion

The equations of motion, the unsteady, compressible Navier Stokes equations, were written in terms of the nondimensional parameters consistent with the boundary layer equations (but terms of order of the reciprocal of the Reynolds number squared were retained). The equations were transformed by a stretching parameter η which packs most points in the boundary layer but allows for a significant distribution of data in the freestream. The stretching utilized was;

$$\eta = 1 - \exp(-\bar{\alpha}\bar{y}/\delta^*)$$

where $\delta^* = \frac{\delta_0^*}{L} \sqrt{Re_L}$, $\bar{y} = \frac{y}{L} \sqrt{Re_L}$, and $\delta_0^*(x)$ is the initial boundary layer thickness distribution (the distribution prior to the initiation of perturbed flow). Re_L is the freestream Reynolds number based on characteristic length L (for example, plate length).

The resulting equation system¹⁶, are rewritten here:

$$\frac{\partial \bar{\rho}}{\partial \bar{t}} + \frac{\partial}{\partial \bar{x}} (\bar{\rho}\bar{u}) + \frac{\partial}{\partial \eta} (\bar{\rho}\bar{u}) \frac{\partial \eta}{\partial \bar{x}} + (1 - \eta) \frac{\alpha}{\delta^*} \frac{\partial \bar{\rho}\bar{v}}{\partial \eta} = 0 \quad (1)$$

$$\begin{aligned} & \frac{\partial}{\partial \bar{t}} (\bar{\rho}\bar{u}) + \frac{\partial}{\partial \bar{x}} (\bar{\rho}\bar{u}^2 + \bar{p}) + \frac{\partial}{\partial \eta} (\bar{\rho}\bar{u}^2 + \bar{p}) \frac{\partial \eta}{\partial \bar{x}} + (1 - \eta) \frac{\alpha}{\delta^*} \frac{\partial}{\partial \eta} (\bar{\rho}\bar{u}\bar{v}) \\ & = \frac{\alpha^2(1-\eta)}{\delta^{*2}} \frac{\partial}{\partial \eta} [\bar{\mu}(1-\eta) \frac{\partial \bar{u}}{\partial \eta}] + \phi_s \end{aligned} \quad (2)$$

$$\frac{\partial}{\partial \bar{t}} (\bar{\rho}\bar{v}) + \frac{\partial}{\partial \bar{x}} (\bar{\rho}\bar{u}\bar{v}) + \frac{\partial}{\partial \eta} (\bar{\rho}\bar{u}\bar{v}) \frac{\partial \eta}{\partial \bar{x}} - (1 - \eta) \frac{\alpha}{\delta^*} \frac{\partial}{\partial \eta} (\bar{\rho}\bar{v}^2 + \bar{p} Re_L) \quad (3)$$

$$\begin{aligned} & = \frac{4}{3} \frac{\alpha^2}{\delta^{*2}} (1 - \eta) \frac{\partial}{\partial \eta} [\bar{\mu}(1 - \eta) \frac{\partial \bar{v}}{\partial \eta}] - \frac{2}{3} (1 - \eta) \frac{\alpha}{\delta^*} \frac{\partial}{\partial \eta} [\bar{\mu} \frac{\partial \bar{u}}{\partial \bar{x}} + \bar{\mu} \frac{\partial \eta}{\partial \bar{x}} \frac{\partial \bar{u}}{\partial \eta}] \\ & + \frac{\partial}{\partial \bar{x}} [\bar{\mu}(1 - \eta) \frac{\alpha}{\delta^*} \frac{\partial \bar{u}}{\partial \eta}] + \frac{\partial \eta}{\partial \bar{x}} \frac{\partial}{\partial \eta} [\bar{\mu}(1 - \eta) \frac{\alpha}{\delta^*} \frac{\partial \bar{u}}{\partial \eta}] + \phi_s \end{aligned}$$

$$\frac{\partial}{\partial \bar{t}} (\bar{\rho}\bar{E}) + \frac{\partial}{\partial \bar{x}} (\bar{\rho}\bar{u}\bar{H}) + \frac{\partial}{\partial \eta} (\bar{\rho}\bar{u}\bar{H}) \frac{\partial \eta}{\partial \bar{x}} + (1 - \eta) \frac{\alpha}{\delta^*} \frac{\partial}{\partial \eta} (\bar{\rho}\bar{u}\bar{H}) \quad (4)$$

$$= \frac{\alpha^2(1-\eta)}{\delta^{*2}} \frac{\partial}{\partial \eta} [\bar{\mu}(1-\eta) \frac{\partial \bar{H}}{\partial \eta}] + \phi_s$$

$$\bar{p} = \bar{\rho}\bar{T} \quad (5)$$

where

$$\bar{x} = \frac{x}{L}; \quad \bar{y} = \frac{y}{L} \cdot \sqrt{Re_L}; \quad \bar{t} = t \frac{u_\infty}{L}$$

$$\bar{u} = \frac{u}{u_\infty}; \quad \bar{v} = \frac{v}{u_\infty} \cdot \sqrt{Re_L}; \quad \bar{p} = \frac{P}{\rho_\infty u_\infty^2}; \quad \bar{\rho} = \frac{\rho}{\rho_\infty}$$

$$\bar{H} = \frac{H}{u_\infty^2} = \frac{C_p T}{u_\infty^2} + \frac{u^2 + v^2}{2u_\infty^2}; \quad \bar{E} = \frac{E}{u_\infty^2} = \frac{C_v T}{u_\infty^2} + \frac{u^2 + v^2}{2u_\infty^2}$$

$$\bar{\mu} = \frac{\mu}{\mu_\infty} = \frac{T_\infty + 198.6}{T + 198.6} \left(\frac{T}{T_\infty} \right)^{3/2}; \quad \bar{T} = \frac{RT}{u_\infty^2} \quad Re_L = \frac{\rho_\infty u_\infty L}{\mu_\infty}$$

and

$$\begin{aligned} \phi_4 = & \frac{1}{Re_L} \left\{ \frac{4}{3} \frac{\partial}{\partial \bar{x}} \left(\bar{\mu} \frac{\partial \bar{u}}{\partial \bar{x}} - \frac{2}{3} \frac{\alpha}{\delta^*} \frac{\partial}{\partial \bar{x}} \left[\bar{\mu} (1 - \eta) \frac{\partial \bar{v}}{\partial \eta} \right] \right) \right. \\ & + \frac{4}{3} \frac{\partial \eta}{\partial \bar{x}} \frac{\partial}{\partial \eta} \left(\bar{\mu} \frac{\partial \bar{u}}{\partial \bar{x}} \right) - \frac{2}{3} \frac{\alpha}{\delta^*} \frac{\partial \eta}{\partial \bar{x}} \frac{\partial}{\partial \eta} \left[\bar{\mu} (1 - \eta) \frac{\partial \bar{v}}{\partial \eta} \right] \\ & + (1 - \eta) \frac{\alpha}{\delta^*} \frac{\partial}{\partial \eta} \left(\bar{\mu} \frac{\partial \bar{v}}{\partial \bar{x}} \right) \\ & + \frac{4}{3} \frac{\partial}{\partial \bar{x}} \left(\bar{\mu} \frac{\partial \eta}{\partial \bar{x}} \frac{\partial \bar{u}}{\partial \eta} \right) + \frac{4}{3} \frac{\partial \eta}{\partial \bar{x}} \frac{\partial}{\partial \eta} \left(\bar{\mu} \frac{\partial \eta}{\partial \bar{x}} \frac{\partial \bar{u}}{\partial \eta} \right) \\ & \left. + \frac{\alpha}{\delta^*} (1 - \eta) \frac{\partial}{\partial \eta} \left(\bar{\mu} \frac{\partial \eta}{\partial \bar{x}} \frac{\partial \bar{v}}{\partial \eta} \right) \right\} \end{aligned}$$

$$\begin{aligned} \phi_5 = & \frac{1}{Re_L} \left[\frac{\partial}{\partial \bar{x}} \left(\bar{\mu} \frac{\partial \bar{v}}{\partial \bar{x}} \right) + \frac{\partial \eta}{\partial \bar{x}} \frac{\partial}{\partial \eta} \left(\bar{\mu} \frac{\partial \bar{v}}{\partial \bar{x}} \right) \right. \\ & \left. + \frac{\partial}{\partial \bar{x}} \left(\frac{\partial \eta}{\partial \bar{x}} \frac{\partial \bar{v}}{\partial \eta} \right) + \left(\frac{\partial \eta}{\partial \bar{x}} \right) \frac{\partial}{\partial \eta} \left(\frac{\partial \eta}{\partial \bar{x}} \frac{\partial \bar{v}}{\partial \eta} \right) \right] \end{aligned}$$

$$\begin{aligned} \phi_6 = & \frac{1}{Re_L} \left\{ \left[\frac{\partial}{\partial \bar{x}} + \frac{\partial \eta}{\partial \bar{x}} \frac{\partial}{\partial \eta} \right] \left[\bar{\mu} \frac{\partial \bar{H}}{\partial \bar{x}} + \frac{\partial \eta}{\partial \bar{x}} \frac{\partial \bar{H}}{\partial \eta} \right] \right. \\ & + \frac{1}{3} \bar{\mu} \left(\frac{\partial \bar{u}}{\partial \bar{x}} + \frac{\partial \eta}{\partial \bar{x}} \frac{\partial \bar{u}}{\partial \eta} \right)^2 + \frac{1}{3} \bar{\mu} \left(\frac{\partial \bar{v}}{\partial \bar{x}} + \frac{\partial \eta}{\partial \bar{x}} \frac{\partial \bar{v}}{\partial \eta} \right)^2 \\ & - \frac{2}{3} \frac{\alpha(1 - \eta)}{\delta^*} \bar{\mu} \left(\frac{\partial \bar{u}}{\partial \bar{x}} + \frac{\partial \eta}{\partial \bar{x}} \frac{\partial \bar{u}}{\partial \eta} \right) \frac{\partial \bar{v}}{\partial \eta} \\ & + \frac{2 \alpha(1 - \eta)}{\delta^*} \bar{\mu} \left(\frac{\partial \bar{v}}{\partial \bar{x}} + \frac{\partial \eta}{\partial \bar{x}} \frac{\partial \bar{v}}{\partial \eta} \right) \frac{\partial \bar{u}}{\partial \eta} \\ & \left. - \frac{1}{2} \left(\frac{\partial \bar{\mu}}{\partial \bar{x}} + \frac{\partial \eta}{\partial \bar{x}} \frac{\partial \bar{\mu}}{\partial \eta} \right) \left(\frac{\partial (\bar{u}^2)}{\partial \bar{x}} + \frac{\partial \eta}{\partial \bar{x}} \frac{\partial (\bar{u}^2)}{\partial \eta} \right) \right\} \end{aligned}$$

Equations (1) - (4) have been solved by a MacCormack predictor-corrector explicit scheme with time splitting⁽¹⁷⁾. At $t = 0$, a disturbance field, calculated utilizing linear stability theory (see below), is initiated near the leading edge of a plate. The time dependent flowfield is then calculated numerically from the unsteady, compressible equations, consistent with the imposed initial and boundary conditions.

B. Initial and Boundary Conditions

The investigation has centered on a study of the amplification or damping of acoustical disturbances propagated into a boundary layer. The experiments of Spangler and Wells¹⁴ who utilized an air-driven, rotating vane sound generator to create the disturbance without producing any appreciable turbulence, were simulated. Both the frequency and the intensity of the sound source had been varied experimentally. In the experiments, a low velocity boundary layer channel was run at a unit Reynolds number of $2.4 \times 10^5/\text{ft.}$, the channel wall representing the flat plate. Measurements of transition occurred at distances on the order of 10 - 20 feet, and thus the length Reynolds numbers of interest were in the 10^6 to 10^7 range.

In order to model this problems, a set of initial and boundary conditions must be established, consistent with the propagation of acoustical disturbances and at the same time consistent with the set of differential equations utilized. The initial data, consistent with equations (1) through (5) under steady state conditions, was originally established utilizing numerical techniques for subsonic boundary layer analysis with normal pressure gradients established by the principal investigator and reported previously.¹⁶ Thus the solution $\bar{t} = 0$ was the solution of the two dimensional steady boundary layer equations with normal momentum equation included.

Consistent with Refs. 2 and 3 similar solutions for the initial profiles were studied. Since no problems were encountered, the final program now utilizes such solutions for the initial field.

At the wall ($\eta = 0$), for a rigid body, one can neglect the effect of the wave on temperature, and for an adiabatic wall one can establish the following relations;

at $\eta = 0$ ($\bar{x} > \bar{x}^*$)

$$\bar{u} = \bar{v} \quad \frac{\partial \bar{T}}{\partial \eta} = 0$$

$$\frac{\partial}{\partial \eta} (\lambda n \bar{p}) = \frac{\partial}{\partial \eta} [(\lambda n \bar{p})]_{\bar{t} = 0} \exp[-Re_L \int_0^{\bar{t}} \frac{\bar{p}}{\bar{\mu}} dt]$$

$$\frac{\partial}{\partial \eta} (\lambda n \bar{p}) = \frac{\partial}{\partial \eta} [(\lambda n \bar{p})]_{\bar{t} = 0} \exp[-Re_L \int_0^{\bar{t}} \frac{\bar{p}}{\bar{\mu}} dt]$$

The outer boundary condition ($\eta \rightarrow 1$) is established by allowing the wave to travel as a plane wave of arbitrary speed (for the acoustic wave, the speed of sound C_∞).

Much effort was expended on the determination of a proper downstream boundary condition. It was found, consistent with the results of Fasel², that the boundary condition that yields the least upstream influence, and is thus superior to other possible ones (including a non-reflective condition) is:

$$\partial^2 \frac{\bar{u}'(\bar{x}_f, \bar{y}, \bar{t})}{\partial \bar{x}^2} = \bar{\alpha}^2 \bar{u}'$$

where $\bar{\alpha} = fL/V_{ph}$ (f is the frequency and V_{ph} the phase velocity), \bar{u}' is the perturbation quantity ($\bar{u} - \bar{u}_0$), and \bar{x}_f is the downstream boundary. This condition says that at the downstream boundary, the disturbance has a periodic form. At $\bar{t} = 0$, a disturbance is initiated

at $\bar{x} \approx 0$ so that the velocity field at $x = \bar{x}^* \approx 0$ and $\bar{t} \geq 0$ can be written as

$$\bar{u}(\bar{x}^*, \bar{y}, \bar{t}) = \bar{u}_0(\bar{x}^*, \bar{y}) + f_1(\bar{y}) \sin(\bar{\omega}\bar{t})$$

where $\bar{u}_0(\bar{x}^*, \bar{y})$ is the velocity profile at $\bar{t} = 0$, $\bar{\omega} = 2\pi fL/U_\infty$ (f being the frequency of the imposed disturbance, in cycles per second) and $f_1(\bar{y})$ is the disturbance profile near the leading edge.

The form of $f_1(\bar{y})$ can in general be prescribed and then the eigenfunction associated with the eigenvalue problem detailed below can be superposed to reconstruct $f_1(\bar{y})$. The complete determination of these eigenfunctions is quite complicated in general depending on the initial boundary layer flow, and leads to a significant numerical problem in linear stability theory. Such complications as the existence of a continuous spectrum of eigenvalues, the presence of a singularity in the linearized eigenvalue problem, and the existence of viscous-type eigenstates which behave singularly in the inviscid limit. [Refs. 18-20] are indicative of studies of such problems.

The other boundary conditions at $x = x^*$ are consistent with linear theory and are to be determined once the form of $f_1(\bar{y})$ is known.

In order to derive appropriate perturbation profiles for use as the initial boundary condition in our program (at $\bar{x} = \bar{x}^*$) the compressible analogue of the Orr-Sommerfeld equations must be solved. For purposes of the present study, we have only considered these equations in the inviscid limit and under the additional assumption of no temperature gradient in the mean flow.

Thus, nondimensionalizing all lengths by the boundary layer thickness δ at a suitable station along the plate, all velocities by the free stream speed of sound, and the pressure by $\rho_\infty c_\infty^2$, the linearized perturbation system considered is;

$$i(ku_0 - \omega)\rho + iku_0\rho + \frac{d}{dy}(\rho_0 V) = 0 \quad (6)$$

$$i(ku_0 - \omega)u + u'_0 V + \frac{ik}{\rho_0} p = 0 \quad (7)$$

$$i(ku_0 - \omega)V + \frac{1}{\rho_0} \frac{dp}{dy} = 0 \quad (8)$$

$$i(ku_0 - \omega)T + T'_0 V = i\left(\frac{\gamma - 1}{\rho_0}\right)(ku_0 - \omega)p \quad (9)$$

$$p/p_0 = \rho/\rho_0 + T/T_0 \quad (10)$$

where bars have been dropped and subscript zero refers to the profile at $t = 0$. The appropriate boundary conditions are discussed below.

As is customary the normal mode type decomposition has been used, and hence we note that ρ, u, V, p, T are functions of y , the distance normal to the plate. The parameters ω and k , the dimensionless frequency and wave number respectively are given by

$$\omega = \Omega\delta/c_\infty, \quad k = \bar{k}\delta$$

where Ω and \bar{k} are dimensional quantities. The mean flow quantities

$$u_0 = M_\infty u_B \quad \text{and} \quad u'_0 = 5.6 \left(M_\infty \frac{du_B}{d\eta} \right)$$

are the dimensionless velocity and velocity gradient respectively where M_B is the freestream Mach number, u_B is the dimensionless (with respect to U_∞) Blasius profile and the factor 5.6 results from changing the normal coordinate from η to y .

Several simplifications can be made in equations (6-10). We have solved for ρ, u, v and T in terms of the pressure p and find that p must satisfy the second order equation

$$p'' - \frac{2ku_0}{u_0 k - \omega} p' + \left[\frac{(u_0 k - \omega)^2}{T_0} - k^2 \right] p = 0 \quad (11)$$

we note that the second condition is a normalization condition.

Equations (11) - (12) now provide an eigenvalue problem for the eigenvalue k . Once the possible values of k are determined, the profiles $\bar{x} = \bar{x}^*$ (i.e. the $f_1(\bar{y})$) can be determined and thus the initial and boundary conditions for the calculation are entirely prescribed. To treat this eigenvalue problem a program developed by Mack Ref. (23) has been used. The program has the capability of treating cases where the phase velocity of the disturbance equals the base flow velocity (critical layer) by deformation of the integration contour into the complex plane.

III. RESULTS UTILIZING PROGRAM

The nonlinear computer program for the solution of equations (1) - (4) was first run for cases corresponding to the Reynolds number and frequency range of the experiments of Reference 14. Figure (1) presents the results of three such computations for the forced response of the boundary layer to acoustic waves of different frequencies at a freestream R.M.S. level of .3%. The results are in line with Tollmien Schlichting amplification rates.

An investigation was initiated to determine what the propagation speed inside the boundary layer was. In all cases, while the disturbances were propagating with the speed of sound along the freestream, the waves within the boundary layer were propagating at a speed of the order of the freestream speed, and thus indeed, the waves are the classical Tollmien Schlichting waves. Such a result is presented in Figure 2.

What is essentially occurring is that the wave propagating along the outer edge has little effect on the boundary layer development. Instead, the major effect is the profile at the leading edge, and thus, the effect of the acoustic wave is only to set up the initial disturbance field (i.e., near $x = 0$), as described previously. The effect of acoustic waves on transition is, thus similar to the effect of other imposed perturbations such as freestream turbulence.

Another numerical experiment was initiated to test this result. The program has the capability to admit freestream disturbances of any speed. Waves were propagated at the freestream velocity, instead of at the acoustic speed, and all other parameters were held constant. The dashed line in Figure 2 indicates that the effect on the boundary layer ($y/\delta < 1$) is insignificant, and the outer boundary condition only effects the flow-field through its amplitude.

The boundary layer response to an imposed disturbance is thus determined completely once the initial profile (from linear stability theory), is found through a complete eigen-value search. Nonlinear programs should therefore be coupled to linear stability programs which determine the linear (upstream boundary condition) profiles deduced from the multitude of eigen values which have been found to exist.

IV. PROGRAM CAPABILITIES

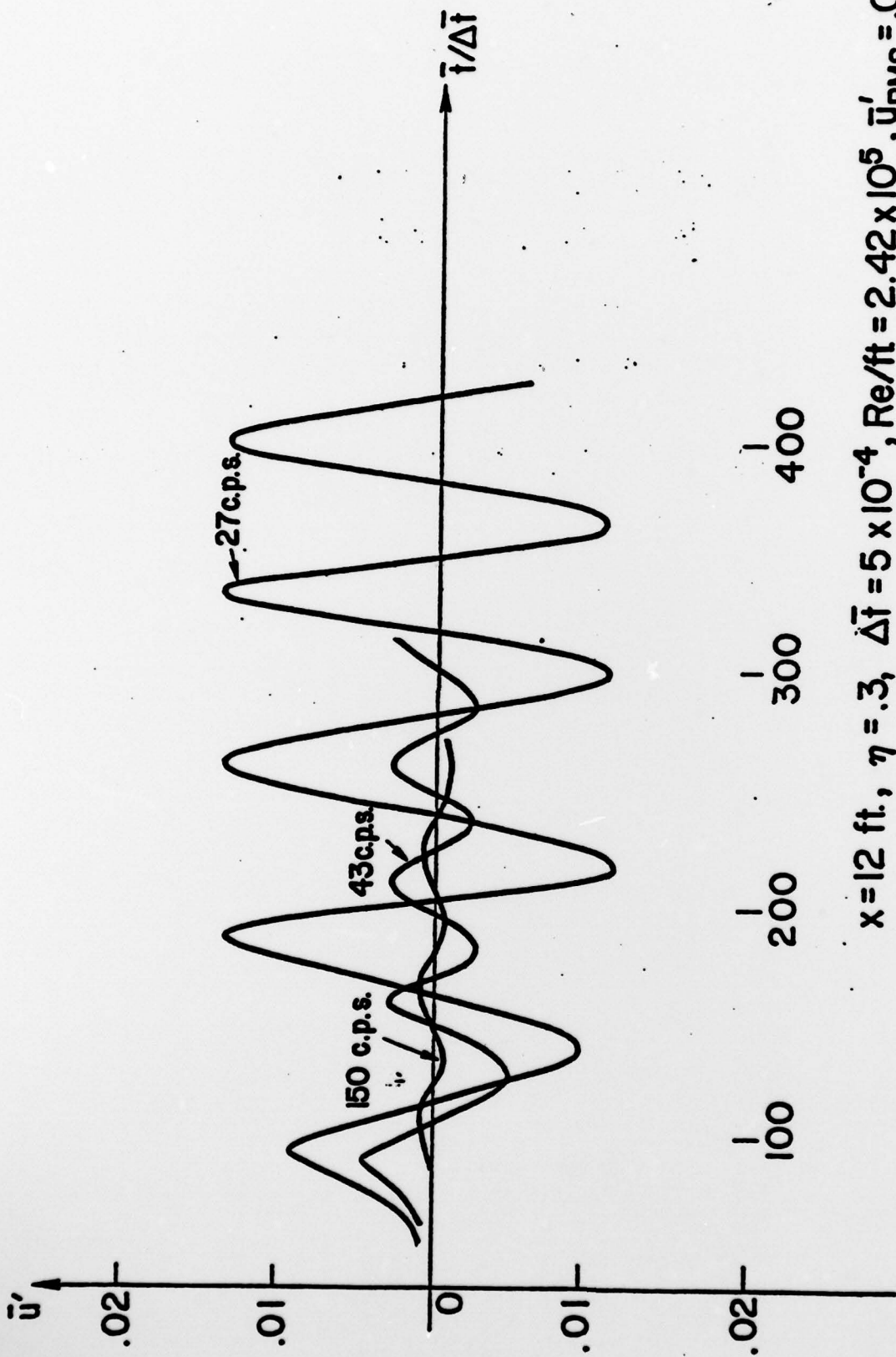
A computer program which can investigate the nonlinear response of a compressible boundary layer on a flat plate to any imposed external disturbance has been produced. The program first computes the boundary condition near the leading edge utilizing linear stability theory and then determines the disturbance field downstream as a function of time, utilizing the MacCormack time splitting explicit technique.

The program originally created to provide a fundamental understanding of boundary layer response to acoustical disturbances has been modified so that a wide range of parameters can be varied. The effects of Mach number and wall conditions can be computed utilizing the program.

REFERENCES

1. Nayfeh, A.H. and Bozatli, A.W., "Secondary Instability in Boundary Layer Flows," V.P.I. -E-78-19, August 1978.
2. Fasel, H., "Investigation of the Stability of Boundary Layers by a Finite Difference Model of the Navier Stokes Equations," Journal of Fluid Mechanics, Vol. 78, Part 2, 1976.
3. Murdock, J.W., "A Numerical Study of Nonlinear Effects on Boundary Layer Stability," A.I.A.A. paper 77-127, January 1977.
4. Orszag, S.A. and Israeli, M., "Numerical Simulation of Viscous Incompressible Flows," Annual Review of Fluid Mechanics, Vol. 6, 1974.
5. Smith, A.M.O. and Gamberoni, N., "Transition, Pressure Gradient and Stability Theory," Douglas Aircraft Report ES-26388, 1956.
6. Mack, L.M., "Computation of the Stability of the Laminar Compressible Boundary Layer," Methods in Computational Physics, Vol. 4, B. Alder, ed., Academic Press, 1965.
7. Wazzan, A.R., Okamura, T.T. and Smith, A.M.O., "Space and Temporal Stability Charts," Douglas Aircraft Report DAC-67086, 1968.
8. Jordinson, R., "The Flat Plate Boundary Layer, Part 1, Numerical Integration of the Orr-Sommerfeld Equation," Journal of Fluid Mechanics, Vol. 43, Part 4, 1970.
9. Saric, W.S. and Nafeh, A.H., "Nonparallel Stability of Boundary Layer Flows," Journal of Physics of Fluids, Vol. 18, No. 8, August 1975.
10. Stuart, J.T., "Hydrodynamic Stability," Applied Mechanics Review, Vol. 18, 1965.
11. Kachanov, I.S., Kozlov, V.V. and Levchenko, V., "Mechanics of Liquids and Gases," (in Russian), 3, 4 (1977).
12. Veasov, E.V., Ginevsky, A.S. and Kravosov, R.K., in Turbulent Flows (Nauka, Moscow, 1977, Ed. V.V. Struminski, in Russian), p. 90.
13. Klebanoff, P.S., Tidstrom, K.D., and Sargent, L.M., Journal of Fluid Mechanics, 12, 1, (1962)
14. Spangler, J.G. and Wells, C.S., "Effects of Freestream Disturbances On Boundary Layer Transition", Journal of the American Institute of Aeronautics and Astronautics, Vol. 6, No. 4, 1968.

15. Shapiro, P.J., "The Influence of Sound Upon Laminar Boundary Layer Stability", M.I.T. Report No. 83458-83560-1, September 1977.
16. Miller, G. and Callegar, A., "The Effects of Acoustical Disturbances on Boundary Layer Transition," New York University/Department of Applied Science Report - NYU/DAS 78-01, January 1978.
17. MacCormack, R.W., "Numerical Solution of the Interaction of a Shock Wave With a Laminar Boundary Layer," Lecture Notes in Physics, Vol. 8, Springer Verlag, 1971.
18. Corner, D., D.J.R., Houston and Ross, M.A.S., "Higher Eigenstates in Boundary Layer Stability Theory", Journal Fluid Mechanics, (1976) 77 Part 1, pp. 81-103.
19. Mack, L.M., "A Numerical Study of the Temporal Eigenvalue Spectra of the Blasius Boundary Layer," J. Fluid Mechanics, (1976) 73 Part 3, pp. 497-520.
20. Antar, B.N. and Benek, J.A. "Temporal Eigenvalue Spectrum of the Orr-Sommerfeld Equation for the Blasius Boundary Layer," Physics of Fluids, 21 (2) February 1978, pp. 183-189.
21. Pridmore-Brown, D.C., "Sound Propagation in A Fluid Flowing Through an Attenuating Duct,"
22. Scott, J.N., "Propagation of Sound Waves Through a Linear Slow Layer," AIAA Journal, 17, 3, March 1979, pp. 237-244.
23. Mack, L.N. "Computation of the Stability of the Laminar Compressible Boundary Layer", Methods of Computational Physics, Vol. 4, 1965. Academic Press



$x = 12 \text{ ft.}, \eta = .3, \bar{\Delta t} = 5 \times 10^{-4}, Re/ft = 2.42 \times 10^5, \bar{u}'_{RMS} = .003$

FIGURE 1. FREQUENCY DEPENDENCE ON DAMPING OR AMPLIFICATION OF ACOUSTICAL DISTURBANCE

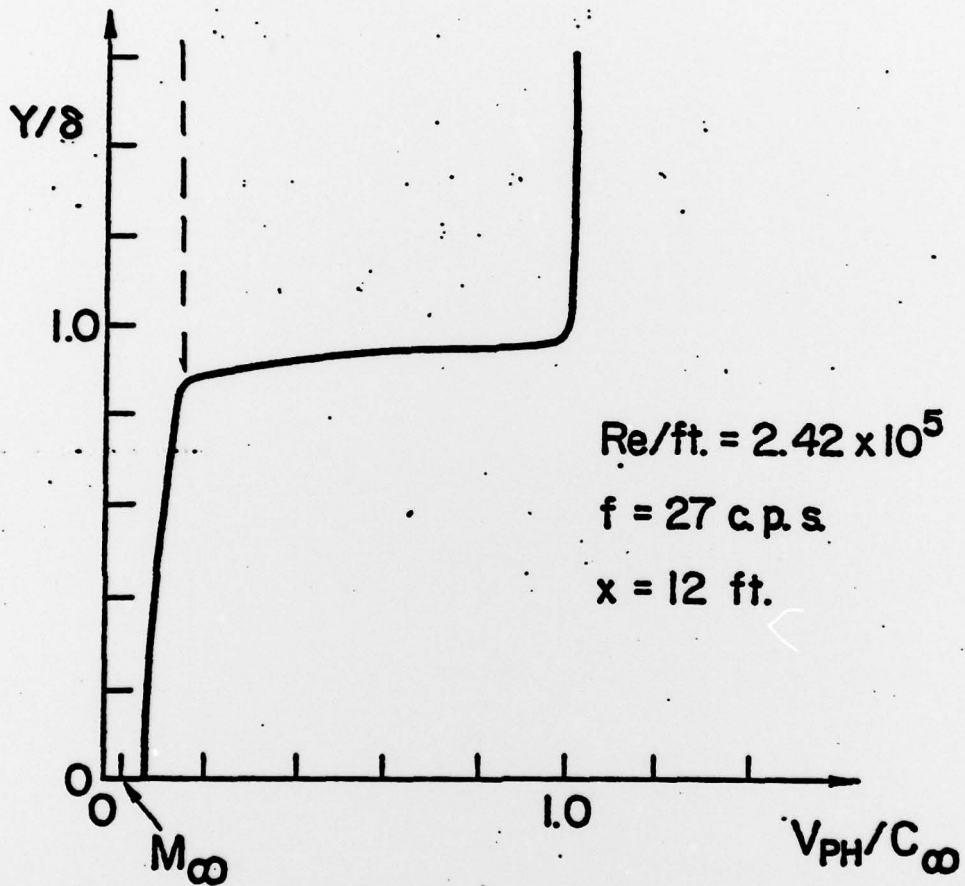


FIGURE 2. PHASE SPEED OF WAVES INSIDE BOUNDARY LAYER UNDER THE INFLUENCE OF ACOUSTICAL DISTURBANCE (DASHED LINE INDICATES PHASE SPEED WHEN FREESTREAM WAVE PROPAGATES AT U_∞)

DISTRIBUTION LIST FOR UNCLASSIFIED
TECHNICAL REPORTS AND REPRINTS ISSUED UNDER
CONTRACT N00014-76-C-0183 TASK NR 061-232

All addresses receive one copy unless otherwise specified

Technical Library
Building 313
Ballistic Research Laboratories
Aberdeen Proving Ground, MD 21005

Dr. F. D. Bennett
External Ballistic Laboratory
Ballistic Research Laboratories
Aberdeen Proving Ground, MD 21005

Mr. C. C. Hudson
Sandia Corporation
Sandia Base
Albuquerque, NM 81115

Professor P. J. Roache
Ecodynamics Research
Associates, Inc.
P. O. Box 8172
Albuquerque, NM 87108

Dr. J. D. Shreve, Jr.
Sandia Corporation
Sandia Base
Albuquerque, NM 81115

Defense Documentation Center
Cameron Station, Building 5
Alexandria, VA 22314

12 Copies

Library
Naval Academy
Annapolis, MD 21402

Dr. G. H. Heilmeier
Director, Defense Advanced
Research Projects Agency
1400 Wilson Boulevard
Arlington, VA 22209

Mr. R. A. Moore
Deputy Director, Tactical
Technology Office
Defense Advanced Research Projects
Agency
1400 Wilson Boulevard
Arlington, VA 22209

Office of Naval Research
Code 411
Arlington, VA 22217

Office of Naval Research
Code 421
Arlington, VA 22217

Office of Naval Research
Code 438
Arlington, VA 22217

Office of Naval Research
Code 1021P (ONRL)
Arlington, VA 22217 6 Copies

Dr. J. L. Potter
Deputy Director, Technology
von Karman Gas Dynamics Facility
Arnold Air Force Station, TN 37389

Professor J. C. Wu
Georgia Institute of Technology
School of Aerospace Engineering
Atlanta, GA 30332

Library
Aerojet-General Corporation
6352 North Irwindale Avenue
Azusa, CA 91702

NASA Scientific and Technical
Information Facility
P. O. Box 8757
Baltimore/Washington International Airport
Maryland 21240

Dr. S. A. Berger
University of California
Department of Mechanical Engineering
Berkeley, CA 94720

Professor A. J. Chorin
University of California
Department of Mathematics
Berkeley, CA 94720

Professor M. Holt
University of California
Department of Mechanical Engineering
Berkeley, CA 94720

Dr. L. Talbot
University of California
Department of Mechanical Engineering
Berkeley, CA 94720

Dr. H. R. Chaplin
Code 16
David W. Taylor Naval Ship Research
and Development Center
Bethesda, MD 20084

Code 1800
David W. Taylor Naval Ship Research
and Development Center
Bethesda, MD 20084

Code 5643
David W. Taylor Naval Ship Research
and Development Center
Bethesda, MD 20084

Dr. G. R. Inger
Virginia Polytechnic Institute
and State University
Department of Aerospace Engineering
Blacksburg, VA 24061

Professor A. H. Nayfeh
Virginia Polytechnic Institute
and State University
Department of Engineering Science
and Mechanics
Blacksburg, VA 24061

Indiana University
School of Applied Mathematics
Bloomington, IN 47401

Director
Office of Naval Research Branch Office
495 Summer Street
Boston, MA 02210

Supervisor, Technical Library Section
Thiokol Chemical Corporation
Wasatch Division
Brigham City, UT 84302

Dr. G. Hall
State University of New York at Buffalo
Faculty of Engineering and
Applied Science
Fluid and Thermal Sciences Laboratory
Buffalo, NY 14214

Mr. R. J. Vidal
Calspan Corporation
Aerodynamics Research Department
P. O. Box 235
Buffalo, NY 14221

Professor R. F. Probst
Massachusetts Institute of Technology
Department of Mechanical Engineering
Cambridge, MA 02139

Director
Office of Naval Research Branch Office
536 South Clark Street
Chicago, IL 60605

Code 753
Naval Weapons Center
China Lake, CA 93555

Mr. J. Marshall
Code 4063
Naval Weapons Center
China Lake, CA 93555

Professor R. T. Davis
University of Cincinnati
Department of Aerospace Engineering
and Applied Mechanics
Cincinnati, OH 45221

Library MS 60-3
NASA Lewis Research Center
21000 Brookpark Road
Cleveland, OH 44135

Dr. J. D. Anderson, Jr.
Chairman, Department of Aerospace
Engineering
College of Engineering
University of Maryland
College Park, MD 20742

Professor W. L. Melnik
University of Maryland
Department of Aerospace Engineering
Glenn L. Martin Institute of Technology
College Park, MD 20742

Professor O. Burggraf
Ohio State University
Department of Aeronautical and
Astronautical Engineering
1314 Kinnear Road
Columbus, OH 43212

Technical Library
Naval Surface Weapons Center
Dahlgren Laboratory
Dahlgren, VA 22448

Dr. F. Moore
Naval Surface Weapons Center
Dahlgren Laboratory
Dahlgren, VA 22448

Technical Library 2-51131
LTV Aerospace Corporation
P. O. Box 5907
Dallas, TX 75222

Library, United Aircraft Corporation
Research Laboratories
Silver Lane
East Hartford, CT 06108

Technical Library
AVCO Everett Research Laboratory
2385 Revere Beach Parkway
Everett, MA 02149

Professor G. Moretti
Polytechnic Institute of New York
Long Island Center
Department of Aerospace Engineering
and Applied Mechanics
Route 110
Farmingdale, NY 11735

Professor S. G. Rubin
Polytechnic Institute of New York
Long Island Center
Department of Aerospace Engineering
and Applied Mechanics
Route 110
Farmingdale, NY 11735

Technical Documents Center
Army Mobility Equipment R&D Center
Building 315
Fort Belvoir, VA 22060

Dr. W. R. Briley
Scientific Research Associates, Inc.
P. O. Box 498
Glastonbury, CT 06033

Library (MS 185)
NASA Langley Research Center
Langley Station
Hampton, VA 23665

Dr. S. Nadir
Northrop Corporation
Aircraft Division
3901 West Broadway
Hawthorne, CA 90250

Professor A. Chapmann
Chairman, Mechanical Engineering
Department
William M. Rice Institute
Box 1892
Houston, TX 77001

Dr. F. Lane
KLD Associates, Inc.
7 High Street
Huntington, NY 11743

Technical Library
Naval Ordnance Station
Indian Head, MD 20640

Professor D. A. Caughey
Cornell University
Sibley School of Mechanical and
Aerospace Engineering
Ithaca, NY 14853

Professor E. L. Resler
Cornell University
Sibley School of Mechanical and
Aerospace Engineering
Ithaca, NY 14853

Professor S. F. Shen
Cornell University
Sibley School of Mechanical and
Aerospace Engineering
Ithaca, NY 14853

Library
Midwest Research Institute
425 Volker Boulevard
Kansas City, MO 64110

Dr. M. M. Hafez
Flow Research, Inc.
P. O. Box 5040
Kent, WA 98031

Dr. E. M. Murman
Flow Research, Inc.
P. O. Box 5040
Kent, WA 98031

Dr. S. A. Orszag
Cambridge Hydrodynamics, Inc.
54 Baskin Road
Lexington, MA 02173

Professor T. Cebeci
California State University, Long Beach
Mechanical Engineering Department
Long Beach, CA 90840

Mr. J. L. Hess
Douglas Aircraft Company
3855 Lakewood Boulevard
Long Beach, CA 90808

Dr. H. K. Cheng
University of Southern California,
University Park
Department of Aerospace Engineering
Los Angeles, CA 90007

Professor J. D. Cole
University of California
Mechanics and Structures Department
School of Engineering and Applied
Science
Los Angeles, CA 90024

Engineering Library
University of Southern California
Box 77929
Los Angeles, CA 90007

Dr. C. -M. Ho
University of Southern California,
University Park
Department of Aerospace Engineering
Los Angeles, CA 90007

Dr. T. D. Taylor
The Aerospace Corporation
P. O. Box 92957
Los Angeles, CA 90009

Commanding Officer
Naval Ordnance Station
Louisville, KY 40214

Mr. B. H. Little, Jr.
Lockheed-Georgia Company
Department 72-74, Zone 369
Marietta, GA 30061

Dr. C. Cook
Stanford Research Institute
Menlo Park, CA 94025

Professor E. R. G. Eckert
University of Minnesota
241 Mechanical Engineering Building
Minneapolis, MN 55455

Library
Naval Postgraduate School
Monterey, CA 93940

McGill University
Supersonic-Gas Dynamics Research
Laboratory
Department of Mechanical Engineering
Montreal 12, Quebec, Canada

Librarian
Engineering Library, 127-223
Radio Corporation of America
Morristown, NJ 07960

Dr. S. S. Stahara
Nielsen Engineering & Research, Inc.
510 Clyde Avenue
Mountain View, CA 94043

Engineering Societies Library
345 East 47th Street
New York, NY 10017

Professor A. Jameson
New York University
Courant Institute of Mathematical
Sciences
251 Mercer Street
New York, NY 10012

Professor G. Miller
New York University
Department of Applied Science
26-36 Stuyvesant Street
New York, NY 10003

Office of Naval Research
New York Area Office
715 Broadway - 5th Floor
New York, NY 10003

Dr. A. Vaglio-Laurin
New York University
Department of Applied Science
26-36 Stuyvesant Street
New York, NY 10003

Professor S. Weinbaum
Research Foundation of the City
University of New York on behalf
of the City College
1411 Broadway
New York, NY 10018

Librarian, Aeronautical Library
National Research Council
Montreal Road
Ottawa 7, Canada

Lockheed Missiles and Space Company
Technical Information Center
3251 Hanover Street
Palo Alto, CA 94304

Director
Office of Naval Research Branch Office
1030 East Green Street
Pasadena, CA 91106

California Institute of Technology
Engineering Division
Pasadena, CA 91109

Library
Jet Propulsion Laboratory
4800 Oak Grove Drive
Pasadena, CA 91103

Professor H. Liepmann
California Institute of Technology
Department of Aeronautics
Pasadena, CA 91109

Mr. L. I. Chasen, MGR-MSD Lib.
General Electric Company
Missile and Space Division
P. O. Box 8555
Philadelphia, PA 19101

Mr. P. Dodge
Airesearch Manufacturing Company
of Arizona
Division of Garrett Corporation
402 South 36th Street
Phoenix, AZ 85034

Technical Library
Naval Missile Center
Point Mugu, CA 93042

Professor S. Bogdonoff
Princeton University
Gas Dynamics Laboratory
Department of Aerospace and
Mechanical Sciences
Princeton, NJ 08540

Professor S. I. Cheng
Princeton University
Department of Aerospace and
Mechanical Sciences
Princeton, NJ 08540

Dr. J. E. Yates
Aeronautical Research Associates
of Princeton, Inc.
50 Washington Road
Princeton, NJ 08540

Professor J. H. Clarke
Brown University
Division of Engineering
Providence, RI 02912

Professor J. T. C. Liu
Brown University
Division of Engineering
Providence, RI 02912

Professor L. Sirovich
Brown University
Division of Applied Mathematics
Providence, RI 02912

Dr. P. K. Dai (R1/2178)
TRW Systems Group, Inc.
One Space Park
Redondo Beach, CA 90278

Redstone Scientific Information
Center
Chief, Document Section
Army Missile Command
Redstone Arsenal, AL 35809

U.S. Army Research Office
P. O. Box 12211
Research Triangle, NC 27709

Professor M. Lessen
The University of Rochester
Department of Mechanical Engineering
River Campus Station
Rochester, NY 14627

Editor, Applied Mechanics Review
Southwest Research Institute
8500 Culebra Road
San Antonio, TX 78228

Library and Information Services
General Dynamics-CONVAIR
P. O. Box 1128
San Diego, CA 92112

Dr. R. Magnus
General Dynamics-CONVAIR
Kearny Mesa Plant
P. O. Box 80847
San Diego, CA 92138

Mr. T. Brundage
Defense Advanced Research
Projects Agency
Research and Development
Field Unit
APO 146, Box 271
San Francisco, CA 96246

Office of Naval Research
San Francisco Area Office
760 Market Street - Room 447
San Francisco, CA 94102

Library
The Rand Corporation
1700 Main Street
Santa Monica, CA 90401

Department Librarian
University of Washington
Department of Aeronautics and
Astronautics
Seattle, WA 98105

Dr. P. E. Rubbert
Boeing Commercial Airplane Company
P. O. Box 3707
Seattle, WA 98124

Mr. R. Feldhuhn
Naval Surface Weapons Center
White Oak Laboratory
Silver Spring, MD 20910

Dr. G. Heiche
Naval Surface Weapons Center
Mathematical Analysis Branch
Silver Spring, MD 20910

Librarian
Naval Surface Weapons Center
White Oak Laboratory
Silver Spring, MD 20910

Dr. J. M. Solomon
Naval Surface Weapons Center
White Oak Laboratory
Silver Spring, MD 20910

Professor J. H. Ferziger
Stanford University
Department of Mechanical Engineering
Stanford, CA 94305

Professor K. Karamcheti
Stanford University
Department of Aeronautics and
Astronautics
Stanford, CA 94305

Professor M. van Dyke
Stanford University
Department of Aeronautics and
Astronautics
Stanford, CA 94305

Engineering Library
McDonnell Douglas Corporation
Department 218, Building 101
P. O. Box 516
St. Louis, MO 63166

Dr. R. J. Hakkinen
McDonnell Douglas Corporation
Department 222
P. O. Box 516
St. Louis, MO 63166

Dr. R. P. Heinisch
Honeywell, Inc.
Systems and Research Division -
Aerospace Defense Group
2345 Walnut Street
St. Paul, MN 55113

Professor R. G. Stoner
Arizona State University
Department of Physics
Tempe, AZ 85721

Dr. N. Malmuth
Rockwell International
Science Center
1049 Camino Dos Rios
P. O. Box 1085
Thousand Oaks, CA 91360

Rockwell International
Science Center
1049 Camino Dos Rios
P. O. Box 1085
Thousand Oaks, CA 91360

The Library
University of Toronto
Institute of Aerospace Studies
Toronto 5, Canada

Professor W. R. Sears
University of Arizona
Aerospace and Mechanical Engineering
Tucson, AZ 85721

Professor A. R. Seebass
University of Arizona
Department of Aerospace and
Mechanical Engineering
Tucson, AZ 85721

Dr. S. M. Yen
University of Illinois
Coordinated Science Laboratory
Urbana, IL 61801

Dr. K. T. Yen
Code 3015
Naval Air Development Center
Warminster, PA 18974

Air Force Office of Scientific
Research (SREM)
Building 1410, Bolling AFB
Washington, DC 20332

Chief of Research & Development
Office of Chief of Staff
Department of the Army
Washington, DC 20310

Library of Congress
Science and Technology Division
Washington, DC 20540

Director of Research (Code RR)
National Aeronautics and
Space Administration
600 Independence Avenue, SW
Washington, DC 20546

Library
National Bureau of Standards
Washington, DC 20234

National Science Foundation
Engineering Division
1800 G Street, NW
Washington, DC 20550

Mr. W. Koven (AIR 03E)
Naval Air Systems Command
Washington, DC 20361

Mr. R. Siewert (AIR 320D)
Naval Air Systems Command
Washington, DC 20361

Technical Library Division (AIR 604)
Naval Air Systems Command
Washington, DC 20361

Page 8

Code 2627
Naval Research Laboratory
Washington, DC 20375

SEA 03512
Naval Sea Systems Command
Washington, DC 20362

SEA 09G3
Naval Sea Systems Command
Washington, DC 20362

Dr. A. L. Slafkosky
Scientific Advisor
Commandant of the Marine Corps
(Code AX)
Washington, DC 20380

Director
Weapons Systems Evaluation Group
Washington, DC 20305

Dr. P. Baronti
General Applied Science
Laboratories, Inc.
Merrick and Stewart Avenues
Westbury, NY 11590

Bell Laboratories
Whippany Road
Whippany, NJ 07981

Chief of Aerodynamics
AVCO Corporation
Missile Systems Division
201 Lowell Street
Wilmington, MA 01887

Research Library
AVCO Corporation
Missile Systems Division
201 Lowell Street
Wilmington, MA 01887

AFAPL (APRC)
AB
Wright Patterson, AFB, OH 45433

Dr. Donald J. Harney
AFFDL/FX
Wright Patterson AFB, OH 45433