

AD-A081 331

DOUGLAS AIRCRAFT CO LONG BEACH CA  
FLIGHT TEST OF HYBRID SEAPLANE MODEL. (U)  
FEB 77 L V MALTRAN  
MDC-J7466

F/6 1/3

N00600-76-C-1602

NL

UNCLASSIFIED

[or]  
AD  
AD/AS-



END  
DATE  
FILMED  
4-80  
REV

UNCLASSIFIED

SECURITY CLASSIFICATION OF THIS PAGE (When Data Entered)

2070  
(4)

REPORT DOCUMENTATION PAGE

READ INSTRUCTIONS  
BEFORE COMPLETING FORM

14

1. REPORT NUMBER  
MDC-J7 466

2. GOVT ACCESSION NO.

3. RECIPIENT'S CATALOG NUMBER

4. TITLE (and Subtitle)  
Flight Test of Hybrid  
Seaplane Model

5. TYPE OF REPORT & PERIOD COVERED

6. PERFORMING ORG. REPORT NUMBER

7. AUTHOR(s)  
K. V. Malthan

8. CONTRACT OR GRANT NUMBER(s)  
N00600-76-C-1602

9. PERFORMING ORGANIZATION NAME AND ADDRESS  
Douglas Aircraft Company  
Long Beach, California 90846

10. PROGRAM ELEMENT, PROJECT, TASK  
AREA & WORK UNIT NUMBERS

11. CONTROLLING OFFICE NAME AND ADDRESS  
CNO (OP96V)  
Washington, D.C. 20350

12. REPORT DATE  
10 February 1977

13. NUMBER OF PAGES  
14

14. MONITORING AGENCY NAME & ADDRESS (if different from Controlling Office)  
DTNSRDC  
Bethesda, Maryland 20084

15. SECURITY CLASS. (of this report)  
Unclassified

15a. DECLASSIFICATION/DOWNGRADING  
SCHEDULE

16. DISTRIBUTION STATEMENT (of this Report)  
Unlimited and approved for Public release.

17. DISTRIBUTION STATEMENT (of the abstract entered in Block 20, if different from Report)

18. SUPPLEMENTARY NOTES

DTIC  
SELECTED  
FEB 29 1980

19. KEY WORDS (Continue on reverse side if necessary and identify by block number)  
Advanced Naval Vehicle Concepts Evaluation  
ANVCE  
Technology Assessment  
Wing-In-Ground Effect  
Seaplane

20. ABSTRACT (Continue on reverse side if necessary and identify by block number)  
Using a radio controlled model, this study investigated a new type of  
wing-in-ground effect seaplane.

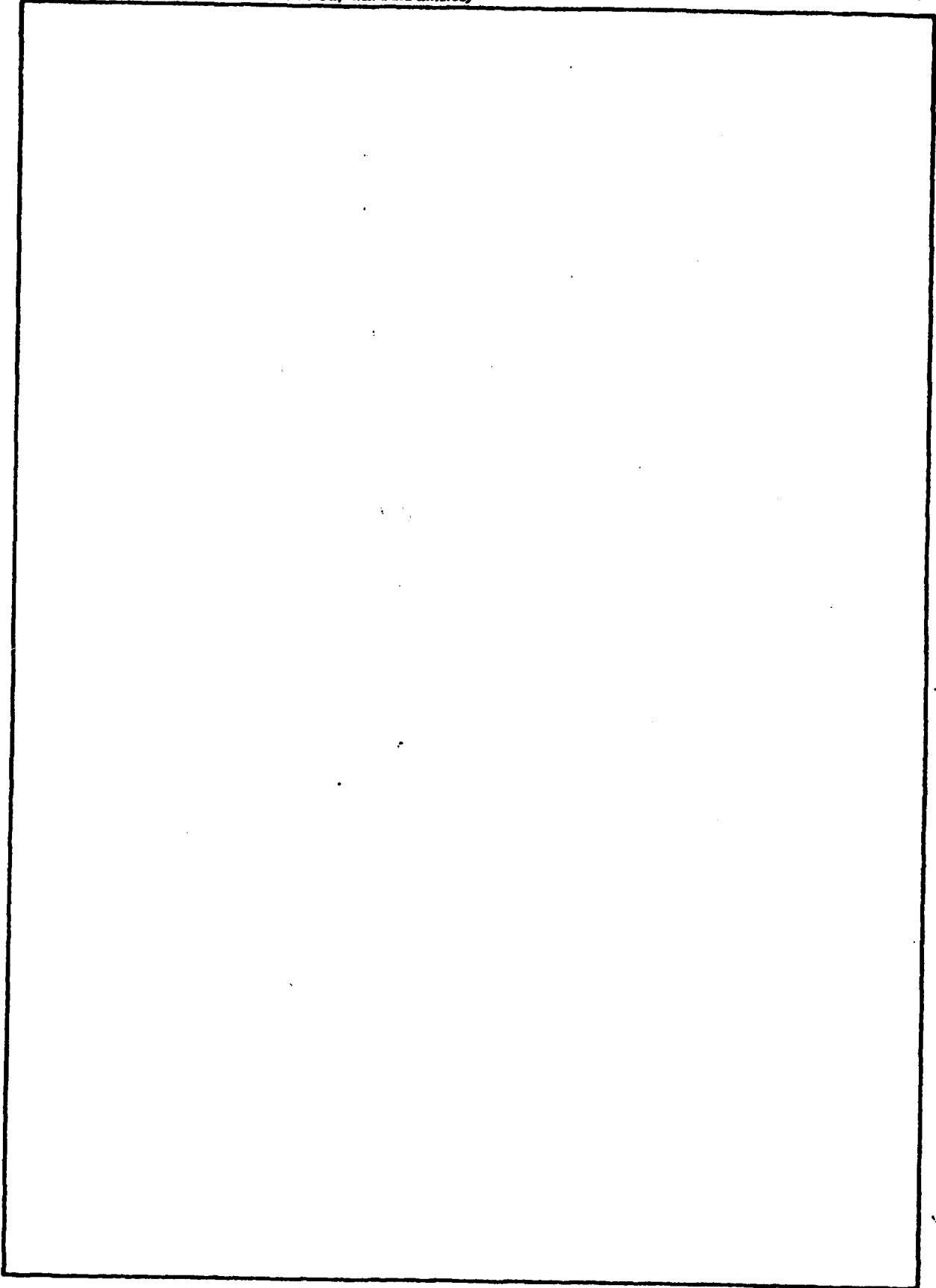
AD A081331

FILE COPY

116400

B

**SECURITY CLASSIFICATION OF THIS PAGE(When Data Entered)**



**SECURITY CLASSIFICATION OF THIS PAGE(When Data Entered)**

Report MDC J7466

FLIGHT TEST OF HYBRID SEAPLANE MODEL

CONTRACT No. N00600-76-C-1602

DAVID TAYLOR NAVAL SHIP RESEARCH AND DEVELOPMENT CENTER

10 FEBRUARY 1977

Prepared by *L. V. Malthan*  
L. V. Malthan

Douglas Aircraft Company  
3855 Lakewood Boulevard  
Long Beach, California 90846

## FLIGHT TEST OF HYBRID SEAPLANE MODEL

### Introduction

A new type of wing-in-ground-effect seaplane has been under limited study by NASA, the Air Force and within the Navy. For instance, one of the many concepts currently under evaluation in the Navy's "Advanced Naval Vehicle Concepts Evaluation" (ANVCE) program is this new concept.

The vehicle concept features a low aspect ratio end-plated wing with plain flaps deflected for takeoff and landing. Forward mounted engines deflect their exhaust air beneath the wings during takeoff and landing providing positive pressure in the under-wing cavity. The vehicle is thus lifted partially out of the water, greatly reducing the level of the conventional seaplane hump drag. Significantly less installed thrust compared to a conventional seaplane is possible and greater sea state takeoff capability can result. Since much of the forward engine thrust is dissipated by the interaction with the wing, separate engines to provide additional acceleration thrust are mounted on the aft fuselage or vertical tail.

The vehicles generally have a lower lift-to-drag ratio than high performance conventional aircraft because of the low aspect ratio wing. They have, however, a superior structural efficiency which results from the low aspect ratio wings, higher design wing loading (less wing area for a given gross weight) and less installed thrust.

One of the outstanding uncertainty areas of these vehicles is a thorough understanding of the takeoff and landing operations. This report summarizes an attempt to gain insight into this area through the use of a low cost free flight radio controlled model. The work was conducted under contract #00600-76-C-1602 to the David Taylor Naval Ship Research and Development Center.

Distribution For	
1	1
2	2
3	3
4	4
5	5
6	6
7	7
8	8
9	9
10	10
11	11
12	12
13	13
14	14
15	15
16	16
17	17
18	18
19	19
20	20
21	21
22	22
23	23
24	24
25	25
26	26
27	27
28	28
29	29
30	30
31	31
32	32
33	33
34	34
35	35
36	36
37	37
38	38
39	39
40	40
41	41
42	42
43	43
44	44
45	45
46	46
47	47
48	48
49	49
50	50
51	51
52	52
53	53
54	54
55	55
56	56
57	57
58	58
59	59
60	60
61	61
62	62
63	63
64	64
65	65
66	66
67	67
68	68
69	69
70	70
71	71
72	72
73	73
74	74
75	75
76	76
77	77
78	78
79	79
80	80
81	81
82	82
83	83
84	84
85	85
86	86
87	87
88	88
89	89
90	90
91	91
92	92
93	93
94	94
95	95
96	96
97	97
98	98
99	99
100	100
101	101
102	102
103	103
104	104
105	105
106	106
107	107
108	108
109	109
110	110
111	111
112	112
113	113
114	114
115	115
116	116
117	117
118	118
119	119
120	120
121	121
122	122
123	123
124	124
125	125
126	126
127	127
128	128
129	129
130	130
131	131
132	132
133	133
134	134
135	135
136	136
137	137
138	138
139	139
140	140
141	141
142	142
143	143
144	144
145	145
146	146
147	147
148	148
149	149
150	150
151	151
152	152
153	153
154	154
155	155
156	156
157	157
158	158
159	159
160	160
161	161
162	162
163	163
164	164
165	165
166	166
167	167
168	168
169	169
170	170
171	171
172	172
173	173
174	174
175	175
176	176
177	177
178	178
179	179
180	180
181	181
182	182
183	183
184	184
185	185
186	186
187	187
188	188
189	189
190	190
191	191
192	192
193	193
194	194
195	195
196	196
197	197
198	198
199	199
200	200
201	201
202	202
203	203
204	204
205	205
206	206
207	207
208	208
209	209
210	210
211	211
212	212
213	213
214	214
215	215
216	216
217	217
218	218
219	219
220	220
221	221
222	222
223	223
224	224
225	225
226	226
227	227
228	228
229	229
230	230
231	231
232	232
233	233
234	234
235	235
236	236
237	237
238	238
239	239
240	240
241	241
242	242
243	243
244	244
245	245
246	246
247	247
248	248
249	249
250	250
251	251
252	252
253	253
254	254
255	255
256	256
257	257
258	258
259	259
260	260
261	261
262	262
263	263
264	264
265	265
266	266
267	267
268	268
269	269
270	270
271	271
272	272
273	273
274	274
275	275
276	276
277	277
278	278
279	279
280	280
281	281
282	282
283	283
284	284
285	285
286	286
287	287
288	288
289	289
290	290
291	291
292	292
293	293
294	294
295	295
296	296
297	297
298	298
299	299
300	300
301	301
302	302
303	303
304	304
305	305
306	306
307	307
308	308
309	309
310	310
311	311
312	312
313	313
314	314
315	315
316	316
317	317
318	318
319	319
320	320
321	321
322	322
323	323
324	324
325	325
326	326
327	327
328	328
329	329
330	330
331	331
332	332
333	333
334	334
335	335
336	336
337	337
338	338
339	339
340	340
341	341
342	342
343	343
344	344
345	345
346	346
347	347
348	348
349	349
350	350
351	351
352	352
353	353
354	354
355	355
356	356
357	357
358	358
359	359
360	360
361	361
362	362
363	363
364	364
365	365
366	366
367	367
368	368
369	369
370	370
371	371
372	372
373	373
374	374
375	375
376	376
377	377
378	378
379	379
380	380
381	381
382	382
383	383
384	384
385	385
386	386
387	387
388	388
389	389
390	390
391	391
392	392
393	393
394	394
395	395
396	396
397	397
398	398
399	399
400	400
401	401
402	402
403	403
404	404
405	405
406	406
407	407
408	408
409	409
410	410
411	411
412	412
413	413
414	414
415	415
416	416
417	417
418	418
419	419
420	420
421	421
422	422
423	423
424	424
425	425
426	426
427	427
428	428
429	429
430	430
431	431
432	432
433	433
434	434
435	435
436	436
437	437
438	438
439	439
440	440
441	441
442	442
443	443
444	444
445	445
446	446
447	447
448	448
449	449
450	450
451	451
452	452
453	453
454	454
455	455
456	456
457	457
458	458
459	459
460	460
461	461
462	462
463	463
464	464
465	465
466	466
467	467
468	468
469	469
470	470
471	471
472	472
473	473
474	474
475	475
476	476
477	477
478	478
479	479
480	480
481	481
482	482
483	483
484	484
485	485
486	486
487	487
488	488
489	489
490	490
491	491
492	492
493	493
494	494
495	495
496	496
497	497
498	498
499	499
500	500
501	501
502	502
503	503
504	504
505	505
506	506
507	507
508	508
509	509
510	510
511	511
512	512
513	513
514	514
515	515
516	516
517	517
518	518
519	519
520	520
521	521
522	522
523	523
524	524
525	525
526	526
527	527
528	528
529	529
530	530
531	531
532	532
533	533
534	534
535	535
536	536
537	537
538	538
539	539
540	540
541	541
542	542
543	543
544	544
545	545
546	546
547	547
548	548
549	549
550	550
551	551
552	552
553	553
554	554
555	555
556	556
557	557
558	558
559	559
560	560
561	561
562	562
563	563
564	564
565	565
566	566
567	567
568	568
569	569
570	570
571	571
572	572
573	573
574	574
575	575
576	576
577	577
578	578
579	579
580	580
581	581
582	582
583	583
584	584
585	585
586	586
587	587
588	588
589	589
590	590
591	591
592	592
593	593
594	594
595	595
596	596
597	597
598	598
599	599
600	600

### Program Objective:

The objective of this program was to study alternative water takeoff and landing procedures for these vehicles and to develop a better understanding of their characteristics during these modes of operations. Identification of potential technology needs and programs necessary to increase the confidence level in the viability of the concept was also anticipated.

### Planned Program

The objectives of the program were not attained primarily because of the use of an inadequate low cost stability augmentation system (SAS). A description is therefore given of the intended content of the model program.

Wing-in-ground effect vehicles of the type under consideration are known to be longitudinally unstable. The primary potential problem area to be addressed prior to initiation of successful takeoff and landing tests, therefore, was longitudinal flight stability. That is, it was judged to be expedient to decouple and solve the basic stability and control problem of the vehicle independent of and prior to approaching the complex takeoff and landing problems. The model tests were restricted to the longitudinal degrees of freedom by tethering the vehicle to a center post and operating it in a circle of about 100 feet diameter. The vehicle was thus free in pitch and heave and was fully responsive to thrust and drag forces. No lateral or directional control provisions were therefore made on the model for these tests.

The program was thus divided into two consecutive phases;

Phase I. Flight of vehicle over a land surface to develop an adequately stabilized configuration.

Phase II. Flight of the vehicle over a water surface to study the takeoff and landing characteristics.

Phase I was initiated on the Douglas premises at Long Beach with removable wheels on the vehicle. Phase II was scheduled to be accomplished on a reservoir of the Irvine Company approximately 30 miles from Long Beach.

The SAS system was found to be inadequate for vehicle stabilization during the Phase I tests and the Phase II hydrodynamic tests have therefore not been attempted. The program has been terminated as infeasible within the scope of the contract funds.

#### Model Description

The model built for the test program was designed and fabricated without drawings and generally used model airplane construction techniques. This approach was made possible by using personnel with extensive personal radio control model airplane experience. The basic structural material was bass plywood, foam and epoxy. A three view drawing of the vehicle is shown in Figure 1 which includes basic vehicle dimensional data and model equipment used.

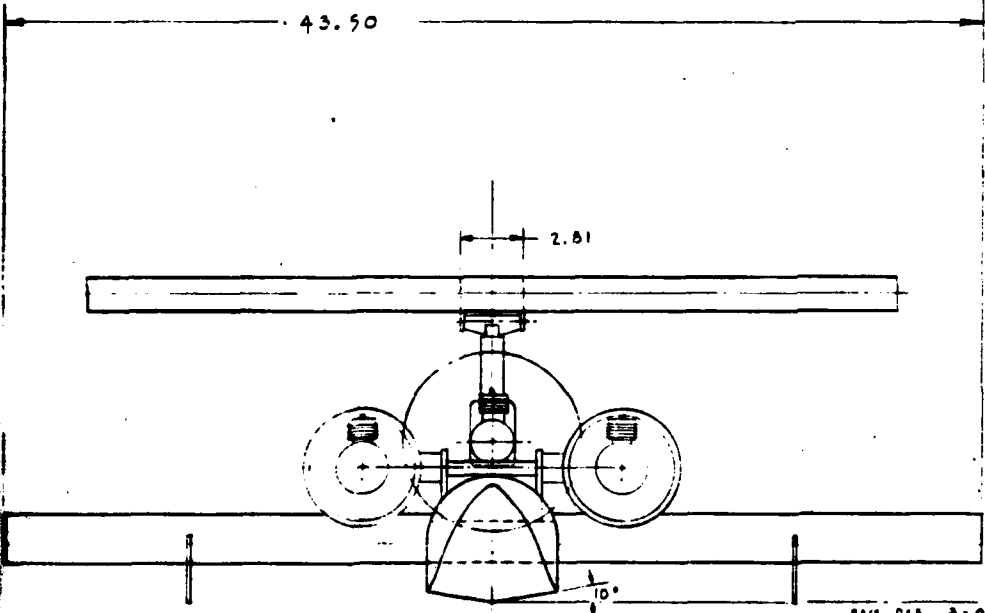
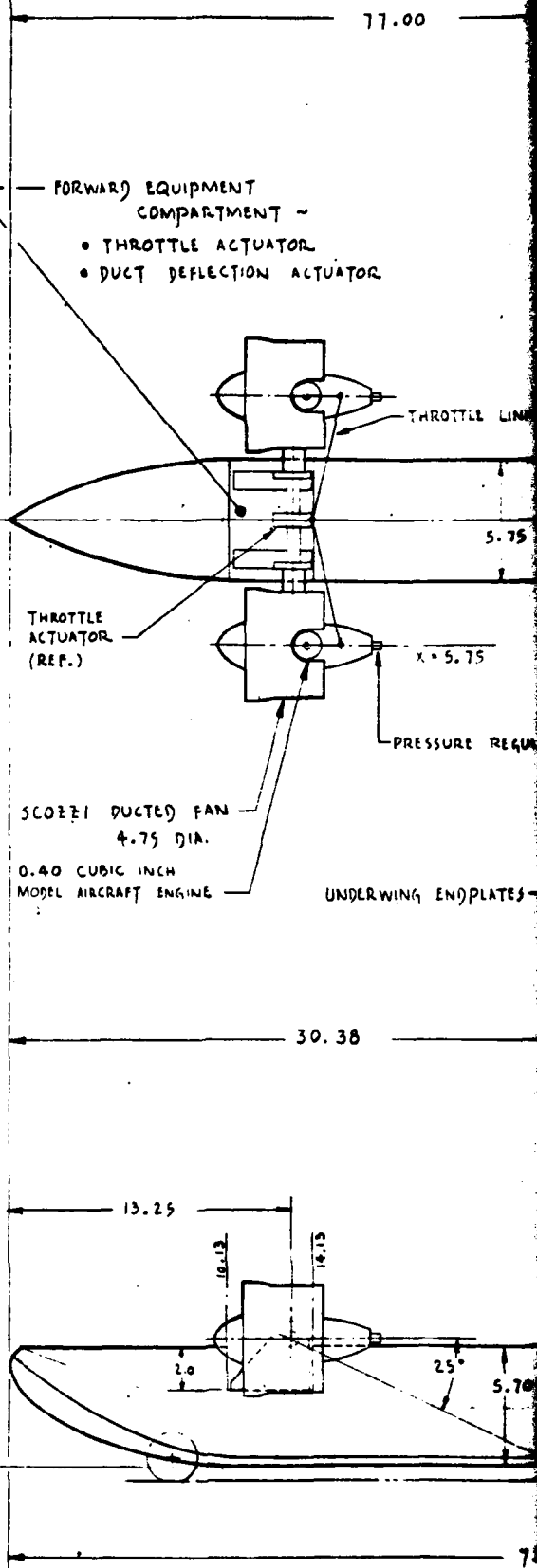
The wing can be positioned fore and aft to facilitate variable center of gravity studies. The vertical height and incidence of the wing can also be varied. A removable hydrodynamic step can also be positioned at three fore and aft locations for test flexibility. Photographs of the model as it now exists are shown as Figures 2, 3 and 4.

The forward propulsion units consist of two plastic ducted fans built by J. J. Scozzi, Inc. of Washington, D.C. They are driven by conventional .40 cubic inch racing K&B model engines. These units are rated at 6 pounds of thrust each. The fan unit includes a fuel pressure regulator mounted to the aft centerbody. The fans are mounted to a single truss mechanism which allows the units to rotate in pitch so as to achieve power augmented ram (PAR) operation. A single Kraft model servo provides the actuation power. The thrust is modulated through a second single Kraft servo mounted on the vehicle centerline.

A third O.S. Max .20 cubic inch model engine with propeller is mounted midway on the vertical stabilizer. A third servo operates the throttle of this engine.

CHARACTERISTICS DATA

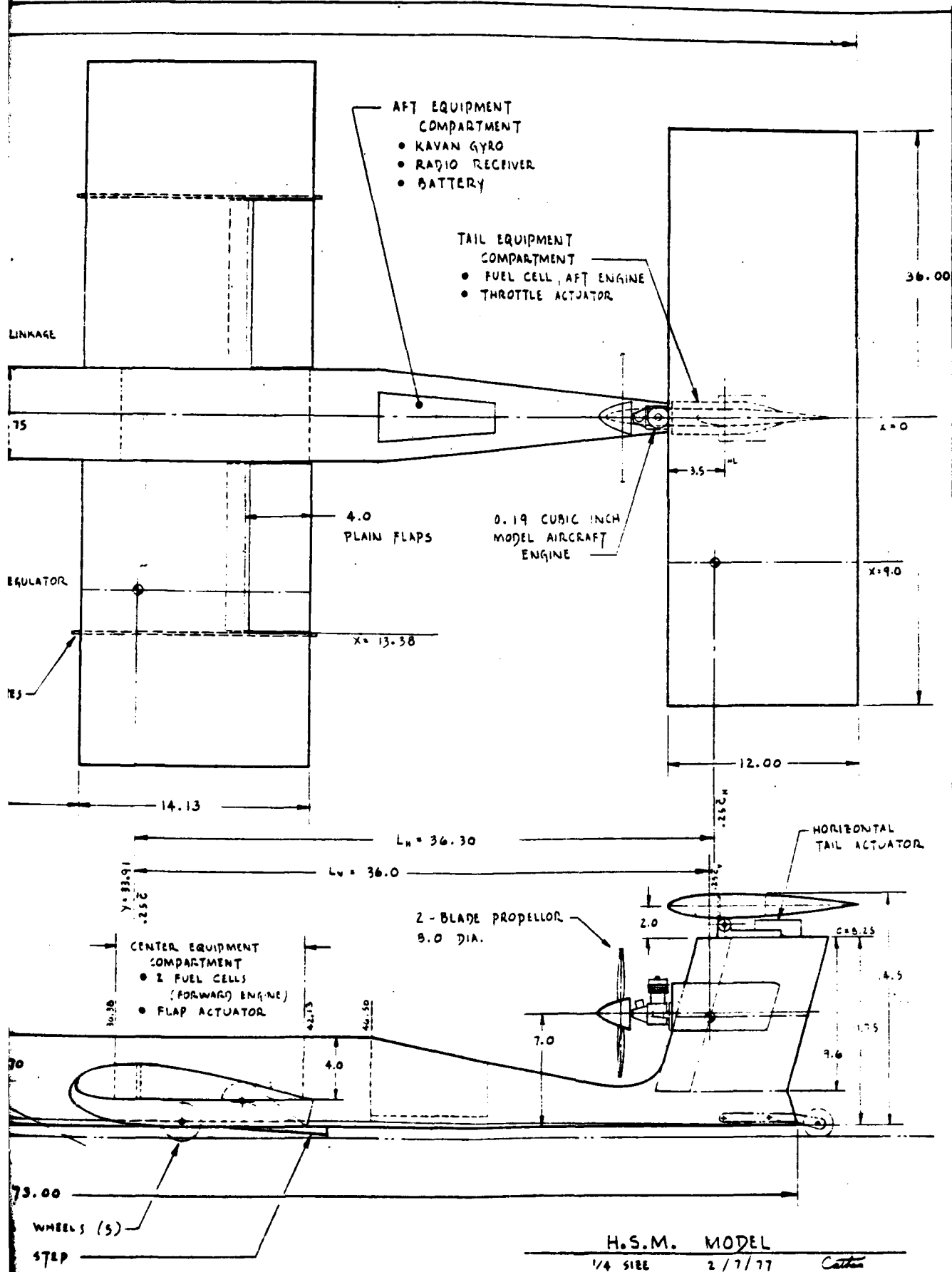
ITEM	WING	HORIZONTAL TAIL	VERTICAL TAIL
AREA, SQ. FT.	4.268	3.000	0.550
ASPECT RATIO	3.079	3.0	1.64
SR. RATIO	1.0	1.0	1.0
SWEEP °/c/a	0°	0°	15°
DIHEDRAL	0°	0	-
THICKNESS, %	16.0	12.5	12.0



BASE REF. 2-0

THIS PAGE IS BEST QUALITY PRACTICABLE FROM COPY FURNISHED TO DDC

REMOVABLE  
MOVABLE



H.S.M. MODEL  
 1/4 SIZE 2/7/77 *Cather*

FIG. 1. Three-View Drawing of Test Model



Figure 2. Test Model



Figure 3. Test Model

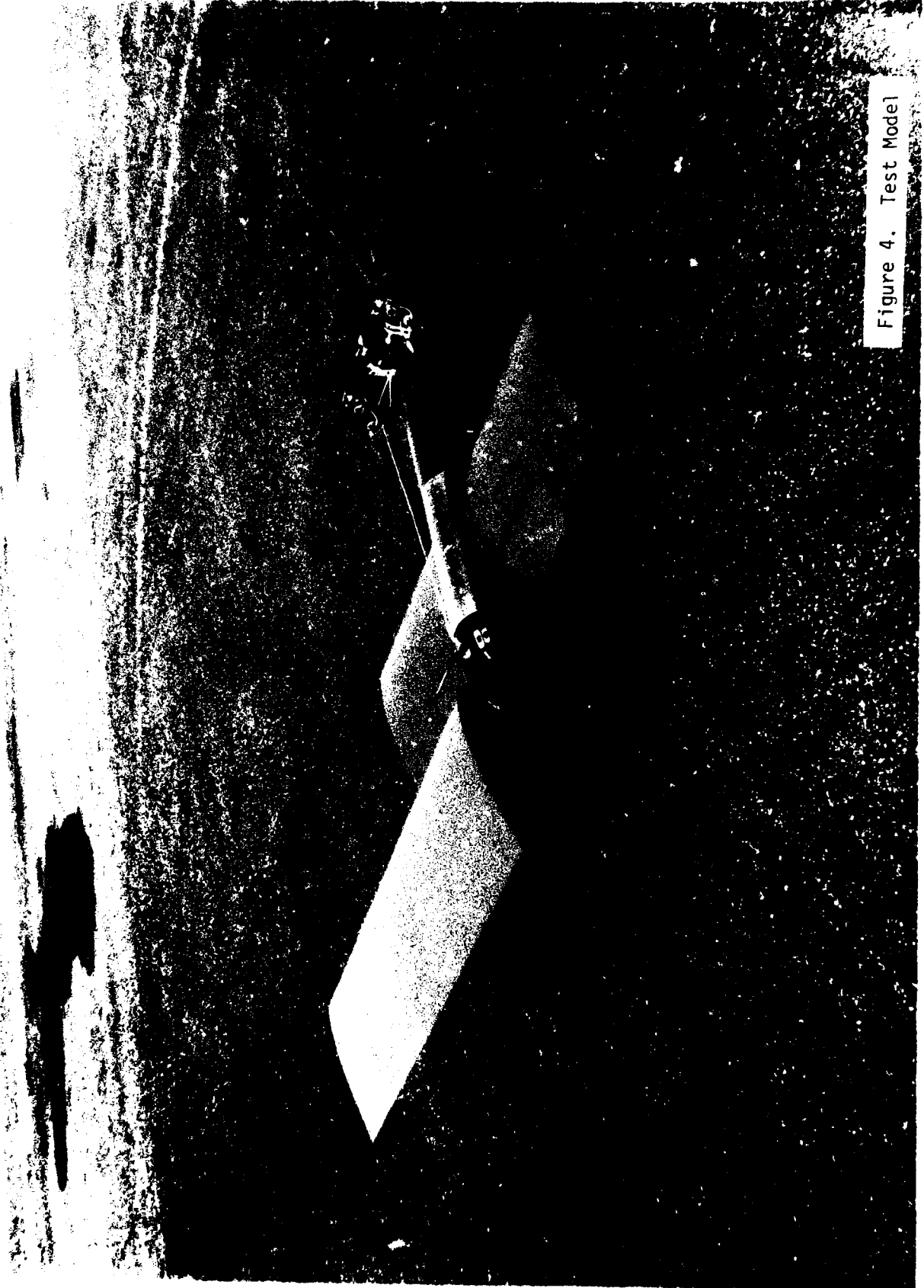


Figure 4. Test Model

The fuel system consists of two tanks mounted in the center hull for each of the two forward engines. The fuel tank for the rear engine is mounted behind the rear engine in the vertical tail.

The wing is 4.3 square feet in gross area and has an aspect ratio 3 rectangular unswept planform. The airfoil is a Clark Y type to preclude suck down pressures as observed on some past ground effect wind tunnel models. An under-wing end plate is mounted 2/3 of the span outboard on each wing panel to provide spanwise sealing for the exhaust air from the forward engines. The aspect ratio of the "PAR portion" of the wing is thus 2. A 25 percent chord plain flap over the PAR portion of the wing is used and is actuated from the center hull cavity by a fourth servo.

The horizontal stabilizer is a one-piece movable surface actuated near the pivot point. The vertical stabilizer is also of one piece with no rudder. A rudder could easily be added for eventual full free flight testing.

The model thus uses 5 channels for proportional actuation for the following functions;

1. flap position
2. stabilizer position
3. forward engine thrust (2 engines)
4. forward engine deflection angle (2 engines)
5. rear engine thrust.

A gyro stabilizing system is installed in a compartment aft of the center hull fuel tanks. This is a small rate gyro built by Kavan and is used by model builders to stabilize model helicopters in yaw (rotor input). The gyro output is input to the horizontal tail servo in series with the manual input through the radio/receiver system.

This same compartment also contains the radio receiver and battery.

For the ground testing phase, a pair of wheels was mounted on the forward hull and one at the rear. Two wheels are also placed at each wing end plate station. The wheels are removable for water testing.

The model is tethered from a wire yoke attached to the hull just fore and aft of the wing. A double strand of wire attaches the yoke to a center post which is anchored into a cement filled tire.

The vehicle weighs approximately 14 pounds and thus has a wing loading of approximately 3 pounds per square foot.

### Test Program

The Phase I ground tests were divided into two series involving different vehicle geometry. The original model had a smaller aspect ratio 2 wing and a smaller 15 degree dihedral horizontal stabilizer which included an elevator. After the first series of tests the wing and horizontal tail were modified.

During the first test series a considerable amount of difficulty was experienced with the model equipment, particularly the model gyro. The gyro tended to hunt and at times chattered. Gyro sensitivity to rate inputs was low due to friction in the gyro electrical output pickup contact. Friction was reduced by lightening the contact pressure as much as possible while still maintaining adequate electrical contact. The gyro return spring was replaced with a lower rate spring. The gyro was, in general, modified to the limit of the sophistication of the unit.

The Scozzi fan/K&B engine combination also caused great difficulty. The Scozzi fans are generally not of good quality. The plastic used is too soft and they were easily damaged by the hand engine starter unit. The sub-assemblies of the unit also could not tolerate the vibration of the engines and modifications were necessary.

The model, however, finally reached operational status and a flight test attempted. The vehicle center of gravity was at approximately 50 percent of the wing chord, flaps down approximately 10 degrees and the forward engines slightly deflected for over the wing blowing (to permit lower flight speeds). After several passes the vehicle pitched up beyond 90 degrees and landing on its back. Structural and some equipment damage was suffered. The vehicle did not respond to pilot initiated nose down elevator inputs or to throttle cut back.

The vehicle was structurally refurbished and damaged equipment repaired. At this time several modifications were made. The wing area was increased 50 percent by adding outboard panels onto the existing wing. The aspect ratio was thus increased from 2 to 3. This action was done to lower the wing loading and flight speeds in order to provide more pilot reaction time. The horizontal and elevator system was also replaced with an all-movable surface and the horizontal tail volume ratio increased approximately 25 percent. This was done to add more stabilizing area and to provide more control power.

The vehicle was then put into flight status. A check of the radio transmitter output revealed deficient range and the unit was sent back to the vendor. It was returned and still found to be deficient in range (about 50 feet). Examination by Douglas engineering personnel showed that the radio antennae was not connected to the radio because of a bad solder joint. It has now been concluded that the non-response of the vehicle during the pitch-up of the first flight was probably caused by a weak radio output (the model pitched on the far side of the circle from the controlling pilot - about 100 feet away).

The vehicle was finally flown a second time on December 8, 1976. The vehicle center of gravity was ballasted between 30 and 35 percent wing chord to make it inherently as stable as possible. The wing flaps were again lowered to approximately 10 degrees and upper surface blowing used. A very smooth portion of runway surface was used. The wind was intermittent at approximately 3 to 5 knots (a marginal test condition but typical of local conditions at this time of year).

The vehicle was taxied at incipient takeoff speed for approximately twenty five transits of the circle. Care was taken to achieve a feel for the vehicle characteristics by lowering the flaps, actuating the stabilizer, etc. and the speed was eased up. On one up-wind transit the vehicle again pitched up to approximately 20 degrees. The vehicle responded to down control and throttle shutoff. However, it hit the front wheels and the horizontal tail broke off. This joint was made the weak structural link for this reason. Minor structural damage was experienced but no equipment was affected.

The vehicle has since been refurbished and stored. No motion picture coverage of the test runs was made.

### Conclusions

The primary conclusion from the experience gained with the model is that the SAS scheme selected (gyro system) did not have sufficient sensitivity or authority to stabilize the vehicle. A more sophisticated approach is required involving a better understanding of the vehicle SAS requirements in its various flight modes. This would require a considerable amplification of the program to accomplish.

The pitch divergence (and other general flight characteristics) of these types of vehicles is a genuine concern and will require sophisticated avionics black box design. These requirements, however, are probably not beyond the current state-of-the-art once an in-depth understanding of the basic aerodynamic/hydrodynamic characteristics of the vehicles are obtained.

### Recommendations

A complete understanding of the basic aerodynamic/hydrodynamic characteristics of these vehicles is not now available and will require an extensive and costly test program to acquire. Much worthwhile insight into the vehicle operating characteristics can still be gained, however, by fulfilling the original objectives and intent of this program. In order to develop an adequate SAS at a reasonable cost, the following SAS program approach is recommended.

1. With the available data base for the aerodynamic characteristics of these types of vehicles (these have been estimated), develop the control laws that will stabilize the vehicle.
2. Set up a simulation of the vehicle and evaluate the system design on the Douglas DETAC non-linear facility.

3. Determine size and output of sensors required and search and acquire existing components where possible.
4. Design servo amplifiers and select servo to drive horizontal surface.
5. Build, assemble and test system. System should be built with maximum degree of flexibility with readily changeable parameters.

The developed SAS would then be installed and checked out in the existing model. The vehicle would be tether flown using the existing radio control system in the Douglas low speed wind tunnel. The tether would restrict the model to some nominal height of the model above the ground board. A thrust tether would also be necessary. The vehicle would be flown in its various operational modes and the SAS tuned as required. The original program as envisioned in this program could then be pursued. It should be pointed out that knowledge gained from the SAS design and wind tunnel program outlined above would be sufficient to justify the program, even if the follow-on flight testing was not conducted.