

AD-A081 556

MILITARY ACADEMY WEST POINT NY OFFICE OF THE DIRECTO--ETC F/6 5/9
TRENDS IN ADMISSION VARIABLES THROUGH THE CLASS OF 1983, (U)

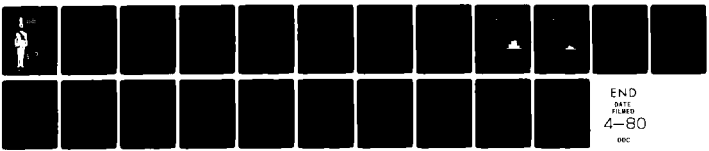
DEC 79 J W HOUSTON

80-002

UNCLASSIFIED

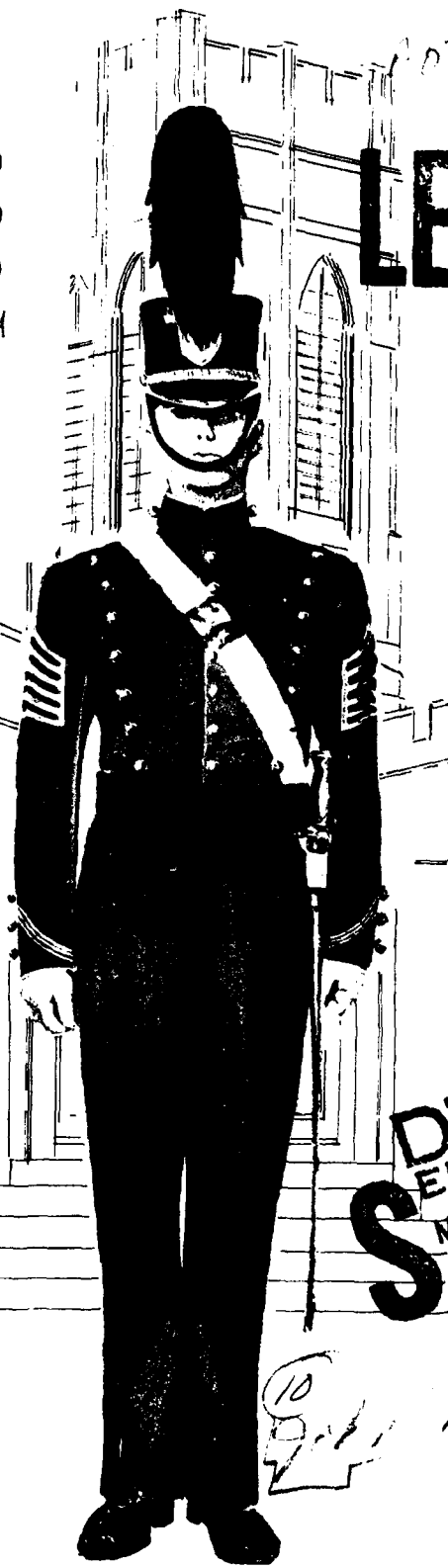
NL

1-1
Microfilm



END
DATE
FILMED
4-80
DEC

ADA 081 556



LEVEL UNITED STATES MILITARY ACADEMY

WEST POINT, NEW YORK

TRENDS IN
ADMISSION VARIABLES
THROUGH THE
CLASS OF 1983

DTIC
ELECTE
MAR 13 1980

This document has been approved
for public release and sale; its
distribution is unlimited.

OFFICE OF THE
DIRECTOR OF INSTITUTIONAL RESEARCH
DECEMBER 1979

DUTY-HONOR-COUNTRY

80 3 12 324

80-002

12

6

1224

10

N. H. ...

11

406347

J.L.

TRENDS IN ADMISSION VARIABLES THROUGH THE CLASS OF 1983

Report No.: 80-002
Project No.: 321
Prepared by: Mr. John W. Houston
Programmer: Mrs. Jackie Pittard
Typist: Miss Shirley Sabel
December 1979

ABSTRACT

The United States Military Academy uses the Whole Candidate concept in the selection of candidates for admission. This concept encompasses three broad areas: Academic, leadership potential, and physical condition and aptitude. This report compares the pre-college performance of members of the Class of 1983 with previous classes in these three areas.

NOTE: Any conclusions in this report are not to be construed as official U.S. Military Academy or Department of the Army positions unless so designated by other authorized documents.

OFFICE OF
THE DIRECTOR OF INSTITUTIONAL RESEARCH By
UNITED STATES MILITARY ACADEMY
WEST POINT, NEW YORK 10996

Accession For	
NTIS GRA&I	<input checked="" type="checkbox"/>
DDC TAB	<input type="checkbox"/>
Unannounced	<input type="checkbox"/>
Justification	<input type="checkbox"/>
Distribution/	
Availability Codes	
Dist	Available for special
A	

Index to Tables and Figures

	<u>Page Number</u>	<u>Title</u>
Figure 1	5	Comparison of number of Cadets and Candidates at each CEER score level--Class of 1983.
Figure 2	6	Comparison of number of Cadets and Candidates at each ACEER score level--Class of 1983.
Table 1	7	Distribution of scores on Whole Candidates score components--Class of 1983.
Table 2	8	Mean and standard deviations for all admission variables for Candidates and Cadets--Class of 1983.
Figure 3	9	Comparison of number of Cadets and Candidates at each LPS level--Class of 1983.
Figure 4	10	Comparison of number of Cadets and Candidates at each Whole Candidate Score level--Class of 1983.
Figure 5	11	Trends of CEER Scores for Candidates and Cadets--Classes of 1974-1983.
Figure 6	12	Trends of SAT-Verbal Scores for Candidates and Cadets--Classes of 1974-1983.
Figure 7	13	Trends of SAT-Math Scores for Candidates and Cadets--Classes of 1974-1983.
Figure 8	14	Trends of Leadership Potential Scores for Candidates and Cadets--Classes of 1974-1983.
Figure 9	15	Trends of Physical Aptitude Exam Scores for Candidates and Cadets--Classes of 1974-1983.
Figure 10	16	Trends of High School Rank Scores of Candidates and Cadets--Classes of 1974-1983.
Figure 11	17	Trends of Whole Candidate Scores for Candidates and Cadets--Classes of 1974-1983.
Table 3	18	Selected High School Activities and Awards of Cadets--Classes of 1975-1983.
Table 3a	19	Selected characteristics of Cadets--Classes of 1975-1983.

Executive Summary

I. PURPOSE. This report contains information, for rapid reference, comparing the pre-college performance of members of the Class of 1983 with previous classes in the areas of academics, leadership potential, and physical performance.

II. METHODOLOGY. Data displayed in this report were obtained from the following sources:

- A. Academic Performance: High School Transcripts, American College Tests and College Entrance Board Tests.
- B. Physical Performance: Physical Aptitude Test.
- C. Leadership Potential: An index developed from combining extra-curricular and athletic activities with high school faculty evaluation.

III. RESULTS.

A. The mean SAT-Verbal score for cadets in the Class of 1983 (560) is six points higher than the average mean score of the last nine years and the mean SAT-Math score (626) is four points lower.

B. The Class of 1983 physical aptitude exam score for men (560) is nine points higher than the average mean for the last nine years and the leadership potential score mean (599) is seven points lower.

C. The mean whole candidate score for cadets in the Class of 1983 (5915) is 20 points higher than the mean score of the last nine years.

IV. CONCLUSIONS.

A. Academic Qualifications: The academic qualifications of cadets have remained approximately the same while the mean College Board scores of all college bound high school seniors throughout the United States has shown a steady decline over the past ten years.

B. Physical Qualifications: While a trend has not yet been established for women, the physical aptitude exam scores of male cadets have shown a slight rise over the last ten years.

C. Leadership Qualifications: The qualities of leadership as measured by the Leadership Potential Score has remained stable over the ten year period.

D. Overall Qualifications: The Military Academy is continuing to attract outstanding candidates.

I. INTRODUCTION

A. Background

1. This report, along with the reports, Characteristics of the Class of 1983 (September 1979) and New Cadets and Other College Freshmen, Class of 1983 (due spring, 1980), comprise the three general reports prepared by the Office of Institutional Research to describe the Class of 1983 at the time the class entered the Military Academy.

2. The same reports were prepared for the Classes of 1971 through 1982 and similar reports are planned for each future class when it enters the Military Academy.

B. Purpose

This report compares the pre-college performance of members of the Class of 1983 with previous classes in the areas of academics, leadership, physical performance and athletic participation.

II. METHODOLOGY

A. Data Collection

Data displayed in this report was obtained from the following sources:

1. Academic performance: High School Transcripts, American College Tests, and College Entrance Examination Board Tests.
2. Physical performance: Physical Aptitude Test.
3. Extracurricular and Athletic: Self-reported by cadets on questionnaires administered during Cadet Basic Training.
4. Leadership Potential: An index developed from combining extracurricular and athletic activities with high school faculty evaluations.

B. Definitions

1. CEER College Entrance Examination Board scores and High School Rank scores combined statistically.
2. HSR High School Rank Score.
3. LPS Leadership Potential Score.
4. PAE Physical Aptitude Examination.
5. SAT-V Scholastic Aptitude Test - Verbal.
6. SAT-M Scholastic Aptitude Test - Mathematics.
7. ACT-EN American College Test - English.
8. ACT-MA American College Test - Mathematics.
9. ACT-NA American College Test - Natural Science.
10. ACEER A composite score of 3 ACT tests and HSR (the ACT Social Science test is not used in calculating the ACEER).
11. WCS Whole Candidate Score. A combination of CEER (or ACEER), LPS and PAE.

III. RESULTS

A. Academic Characteristics

1. The mean College Entrance Examination Board and American College Test scores for the Classes of 1979 through 1983 for admitted cadets are:

	<u>'83</u>	<u>'82</u>	<u>'81</u>	<u>'80</u>	<u>'79</u>
SAT-V	560	560	548	550	550
SAT-M	626	637	629	638	629
ACT-EN	23.2	23.2	22.4	22.6	22.2
ACT-MA	28.9	29.0	28.4	28.7	28.9
ACT-NS	29.1	29.0	29.0	29.2	28.6
HSR	565	569	563	572	557

2. The mean cadet score for the Class of '83 on SAT-V is higher than that of 87% of secondary school seniors who comprise the national norm for college bound youths; and the mean SAT-M of cadets is higher than 89% of the national norm. The means of cadets on the American College Test scores were well above the national sample for students at 1138 colleges. The mean cadet score for the Class of '83 on ACT-English is higher than 85% of the students in the national norm; the mean cadet ACT-Math is higher than 94% of those students; and the mean cadet ACT-Natural Science score is higher than 86%.

3. The mean scores of the Scholastic Aptitude Test of all college-bound high school seniors, nationwide, has shown a steady decline over the past fourteen years; for USMA the decline has been much less:

	<u>SAT-V</u>		<u>SAT-M</u>	
	<u>1965</u>	<u>1979</u>	<u>1965</u>	<u>1979</u>
USMA	569	560	637	626
Nationwide	473	427	496	467

4. Each candidate is evaluated either on College Board scores (CEER) or American College Test Program scores (ACEER). If both are available, the higher of the two is used. Figure 1 provides a graphic comparison of the number of cadets within each CEER range with the number of completely examined candidates within the same ranges. Figure 2 shows a similar comparison of candidates and cadets evaluated using ACEER scores. Table 1 shows the distribution, at 50 point intervals, of whole candidate score components for cadets in the Class of 1983.

B. Physical Aptitude. The average Physical Aptitude Examination score of 560 for men in the USMA Class of 1983 is the same as the score for the Class of 1982. The women in the Class of 1983 had a mean PAE score of 506. The distribution of these scores is shown in Table 2.

C. Leadership Potential. The Leadership Potential Scores are derived from the ratings of the candidate by his secondary school teachers and evaluations by admissions officials of his quality of participation in athletic and other school and community activities. The mean LPS for this class (599) is within five points of the mean of Classes for the past four years. A graphic comparison of the distribution Scores in this Class with that in the candidate populations is provided in Figure 3.

D. Overall Characteristics.

1. The Whole Candidate Score is a weighted score consisting of 60 percent CEER (or ACEER), 10 percent PAE, and 30 percent LPS. The distribution of the WCS for the Class of 1983 is shown below:

<u>Score Range</u>	<u>Frequency</u>	<u>Percent</u>
7500-8000	0	0
7000-7499	5	0.4
6500-6999	75	5.4
6000-6499	461	33.0
5500-5999	681	48.7
5000-5499	165	11.8
4500-4999	9	0.6
Below 4500	2	0.1

1398

Mean = 5915 Standard deviation = 365

2. A graphic comparison of the number of cadets whose scores fall in each WCS range with the number of candidates whose scores fall within the same ranges is shown in Figure 4.

E. Trends in Admissions Variables

Figures 5-11 show trend data for the classes of 1974 through 1983. Figure 5 shows that academic scores dropped off somewhat to the Class of 1977 and, after a sharp rise for the Class of 1978, have remained fairly constant. Other trends for admitted cadets reflect the following:

1. SAT-V and SAT-M scores show a similar pattern, with little deviation over the past five years (Figures 6&7).
2. The LPS has remained fairly constant with a deviation of no more than eight points from the mean of the ten year period (Figure 8).
3. The PAE scores for men have shown a slight rise over the last ten years (Figure 9).
4. The HSR has been fairly constant for the last ten years, with the mean for the Class of '83 being eleven points higher than the average for that period (Figure 10).
5. The WCS declined through the Class of 1977, increasing for the Class of 1978 through the Class of 1982 and declined slightly for the Class of 1983 (Figure 11).

F. Selected Activities and Awards

Tables 3 and 3a give information on the background, activities and awards of entering cadets of the Classes of 1975 through 1983.

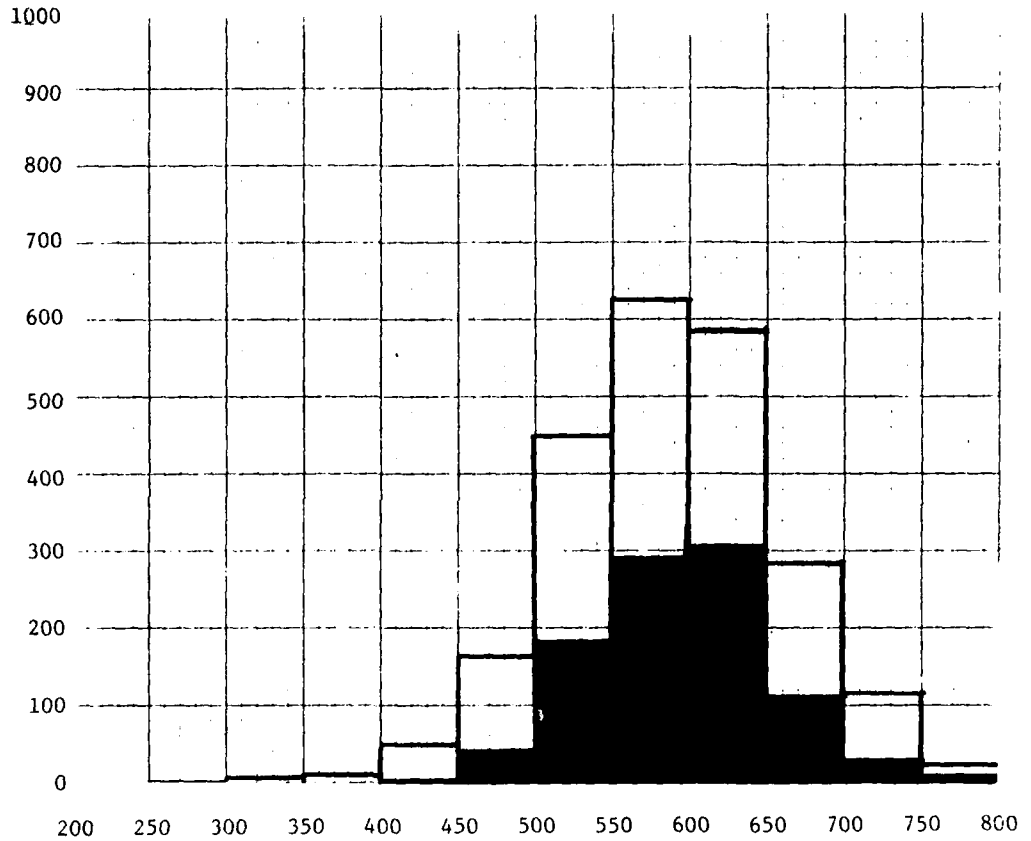
The Class of 1983 displays a diversity of involvement in extracurricular and athletic activities similar to previous classes. Over 24 percent of the Class of 1983 held an elective high school class office; over 80 percent earned varsity letters and 45 percent were team captains. Over 50 percent were scouts, 13 percent making the rank of Eagle Scout. Twenty-two percent were Boys/Girls State Representatives.

IV. CONCLUSIONS

1. Academic Qualifications: The academic qualifications of cadets has remained approximately the same while the mean College Board scores of all college bound high school seniors has shown a steady decline over the past ten years.
2. Physical Qualifications: While a trend has not yet been established for women, the physical aptitude exam scores of male cadets have shown a slight rise over the past ten years.
3. Leadership Qualifications: The qualities of leadership as measured by the Leadership Potential Score has remained stable over the ten year period.
4. Overall Qualifications: The Class of 1983 has a mean whole candidate score 20 points higher than the average mean score of the last ten years, indicating that the Military Academy is continuing to attract outstanding candidates.




C

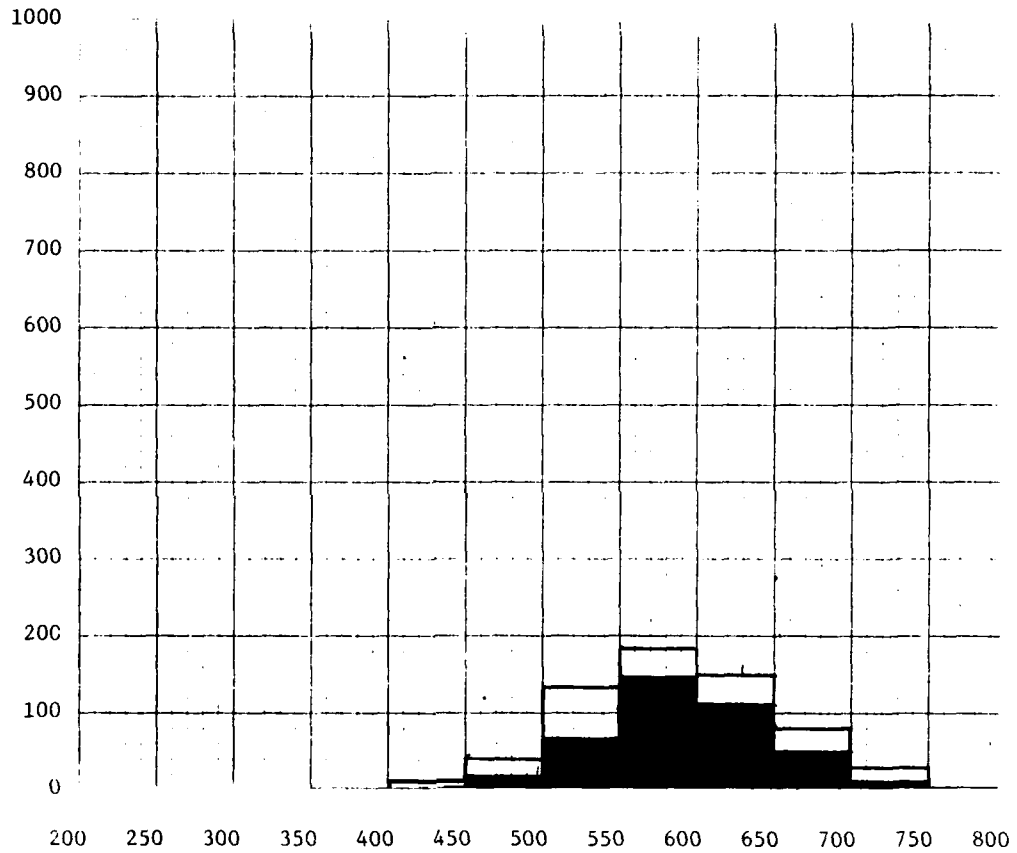
		<u>Number</u>	<u>Mean</u>	<u>SD</u>
Candidates	□	2336	587	71
Cadets	■	992	594	59



	CEER Scores											
No. Candidates	0	1	7	9	53	169	450	625	590	294	116	22
% Entered	0	0	0	0	9.4	27.2	40.4	46.4	52.7	39.1	29.3	40.9
No. Cadets	0	0	0	0	5	46	182	290	311	115	34	9

FIGURE 1 COMPARISON OF THE NUMBER OF CADETS (EVALUATED USING CEER) WITH THE NUMBER OF FULLY EXAMINED CANDIDATES (EVALUATED USING CEER) AT EACH CEER SCORE LEVEL FOR THE CLASS OF 1983.

		<u>Number</u>	<u>Mean</u>	<u>SD</u>
Candidates		Candidates 636	588	66
Cadets		Cadets 406	592	54



	ACEER Scores											
No. Candidates	0	0	0	1	10	40	137	184	151	81	28	4
% Entered	0	0	0	0	10.0	45.0	48.2	79.9	74.2	63.0	39.3	0
No. Cadets	0	0	0	0	1	18	66	147	112	51	11	0

FIGURE 2 COMPARISON OF THE NUMBER OF CADETS (EVALUATED USING ACEER) WITH THE NUMBER OF FULLY EXAMINED CANDIDATES (EVALUATED USING ACEER) AT EACH ACEER SCORE LEVEL FOR THE CLASS OF 1983.

TABLE 1
 DISTRIBUTION OF SCORES ON WHOLE CANDIDATE SCORE COMPONENTS
 FOR THE CLASS OF 1983

Score Ranges	Academic		Male Physical Aptitude (PAE)		Female Physical Aptitude (PAE)		Leadership Potential (LPS)			
	CEER	ACEER								
	No.	%	No.	%	No.	%	No.	%	No.	%
750-800	9	3.9	0	0	9	0.7	0	0	4	0.2
700-749	34	3.4	11	2.7	32	2.5	0	0	79	5.7
650-699	115	11.6	51	12.6	100	7.9	5	3.8	270	19.3
600-649	311	31.4	112	27.6	219	17.3	11	8.5	396	28.3
550-599	290	29.2	147	36.2	332	26.2	19	14.6	310	22.2
500-549	182	18.3	66	16.3	296	23.4	25	19.2	218	15.6
450-499	46	4.6	18	4.4	218	17.2	39	30.0	93	6.7
400-499	5	0.5	1	0.2	57	4.5	28	21.5	23	1.6
350-399	0	0	0	0	3	0.2	2	1.5	5	0.4
300-349	0	0	0	0	1	0.1	1	0.8	0	0

Total	992		406		1267		130		1398	
Mean	594		592		560		506		599	
S.D.	59		54		72		72		69	

TABLE 2
 MEANS AND STANDARD DEVIATIONS FOR CEER, LPS, PAE
 AND WCS, CLASS OF 1983

	CEER			LPS			PAE			WCS		
	N	Mean	SD	N	Mean	SD	N	Mean	SD	N	Mean	SD
A	5782	547	88	7758	544	87	4478	518	104	7758	5416	655
T	2336	587	71	2969	579	76	2972	533	93	2969	5794	485
M	2182	587	71	2771	580	76	2773	536	91	2771	5801	484
C	992	594	59	1398	599	69	1267*	560	72	1398	5915	365

*PAE for Male Cadets: Means and Standard Deviations of PAE for candidates is for male and female combined.

MEANS AND STANDARD DEVIATIONS FOR ACEER, ACT-EN,
 ACT-MA, AND ACT-NA, CLASS OF 1983

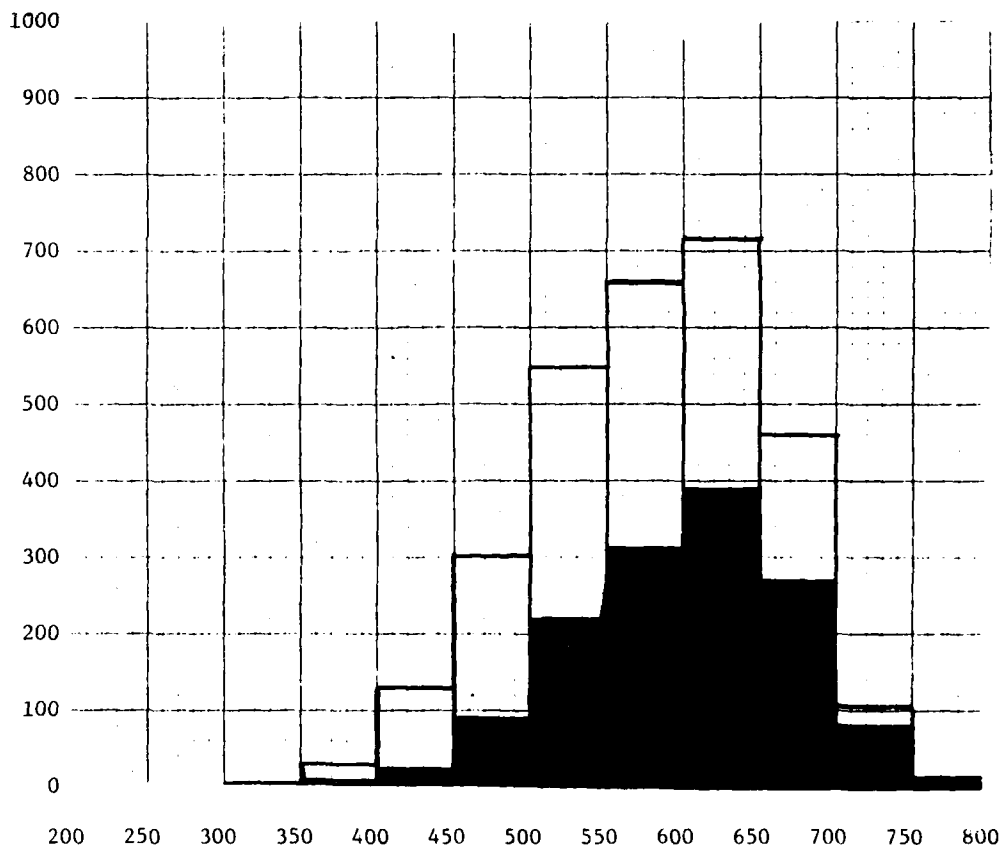
	ACEER			ACT-EN			ACT-MA			ACT-NA		
	N	Mean	SD	N	Mean	SD	N	Mean	SD	N	Mean	SD
A	2094	553	86	2091	22.0	4.1	2094	26.5	5.2	2090	27.7	4.6
T	636	588	66	636	23.3	3.5	636	28.8	3.5	636	28.9	3.7
M	591	588	66	591	23.3	3.5	591	28.9	3.5	591	28.9	3.6
C	406	592	54	406	23.2	3.1	406	28.9	3.1	406	29.1	3.3

MEANS AND STANDARD DEVIATIONS FOR SAT-V, SAT-M, AND
 HSR, CLASS OF 1983

	SAT-V			SAT-M			HSR		
	N	Mean	SD	N	Mean	SD	N	Mean	SD
A	5333	514	98	5329	581	97	7875	530	114
T	2336	550	82	2336	618	78	2972	557	112
M	2182	550	82	2182	618	77	2773	557	111
C	992	560	74	992	626	67	1398	565	103

A = All Candidates Tested on Variables
 T = All Candidates Fully Tested on CEER (ACEER), LPS, PAE and WCS
 M = All Candidates Fully Tested and Medically Qualified
 C = Admitted Candidates Who Became Cadets

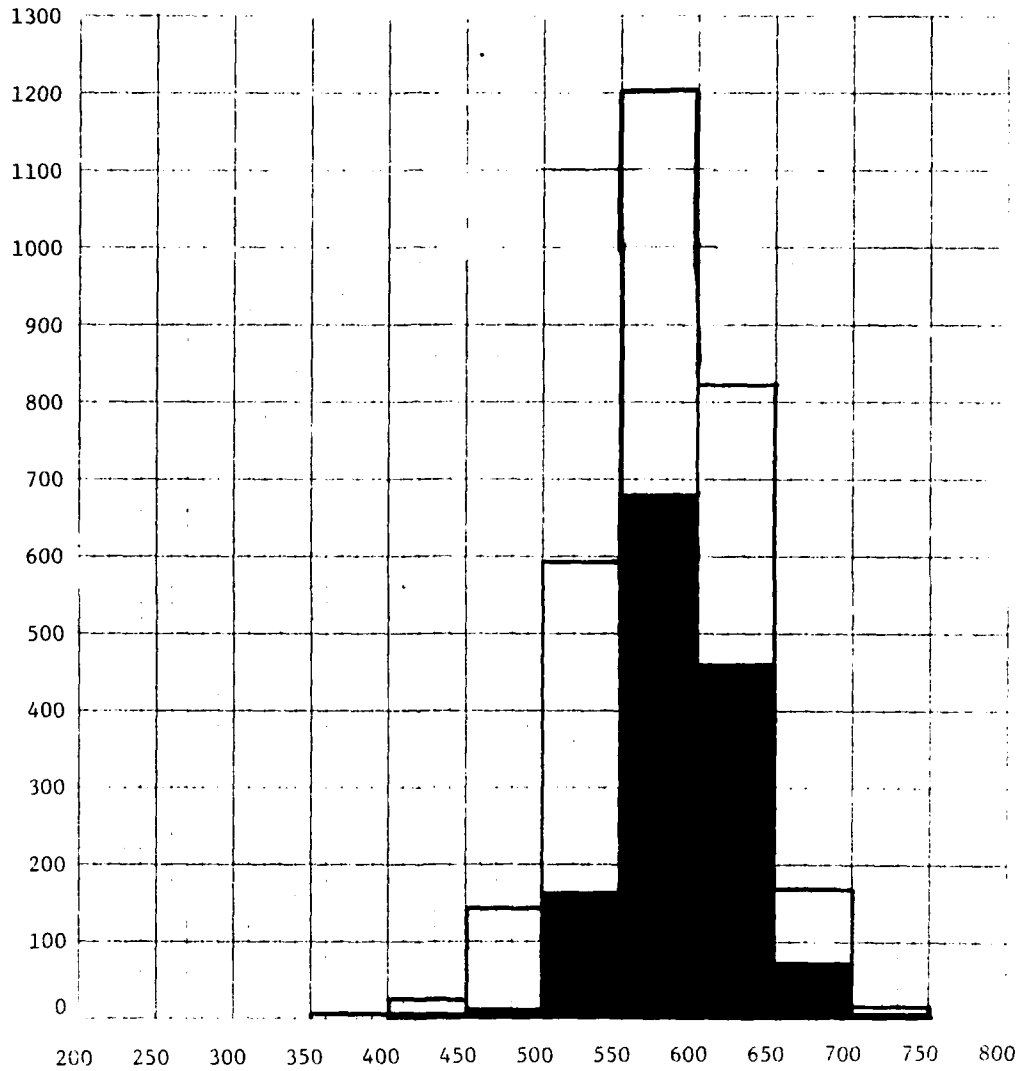
	<u>Number</u>	<u>Mean</u>	<u>SD</u>
Candidates	2969	579	76
Cadets	1398	599	69



	LP Scores											
No. Candidates	0	0	14	28	135	302	549	660	718	462	103	8
% Entered	0	0	0	17.9	17.0	30.8	39.7	47.0	55.2	58.4	76.7	50.0
No. Cadets	0	0	0	5	23	93	218	310	396	270	79	4

FIGURE 3 COMPARISON OF THE NUMBER OF CADETS WITH THE NUMBER OF FULLY EXAMINED CANDIDATES AT EACH LEADERSHIP POTENTIAL LEVEL FOR THE CLASS OF 1983.

	<u>Number</u>	<u>Mean</u>	<u>SD</u>
Candidates	2969	579.4	48.5
Cadets	1398	591.5	36.5



	Whole Candidate Scores (x10)											
No. Candidates	0	0	0	2	22	144	591	1202	822	172	14	0
% Entered	0	0	0	0	9.1	6.3	27.9	56.7	56.1	43.6	35.7	0
No. Cadets	0	0	0	0	2	9	165	681	461	75	5	0

FIGURE 4 COMPARISON OF THE NUMBER OF CADETS WITH THE NUMBER OF FULLY EXAMINED CANDIDATES AT EACH WHOLE CANDIDATE SCORE LEVEL FOR THE CLASS OF 1983.

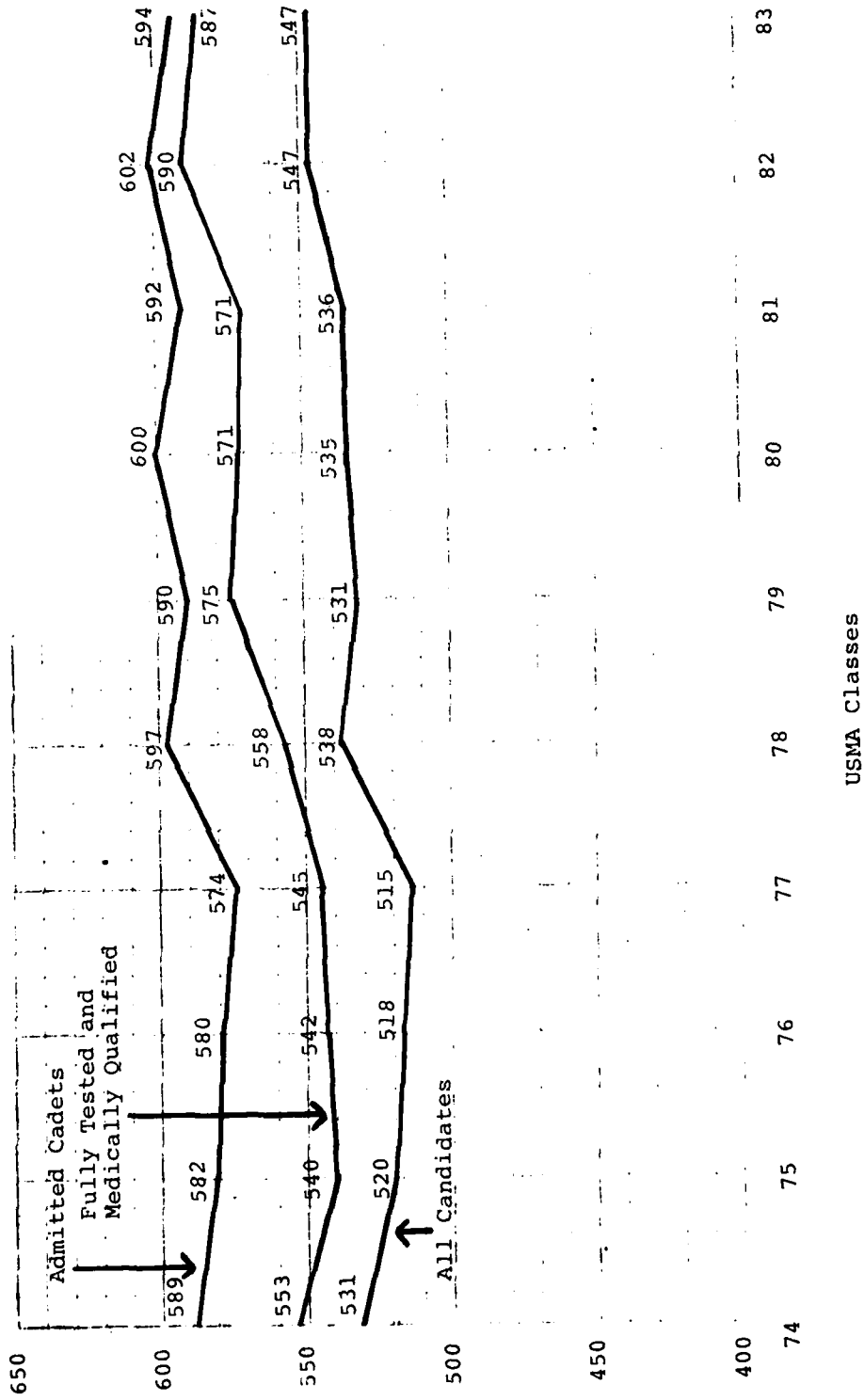


FIGURE 5 TRENDS OF MEAN CEER SCORES FOR THE CANDIDATES AND ENTERING CADETS OF THE CLASSES OF 1974 THROUGH 1983.

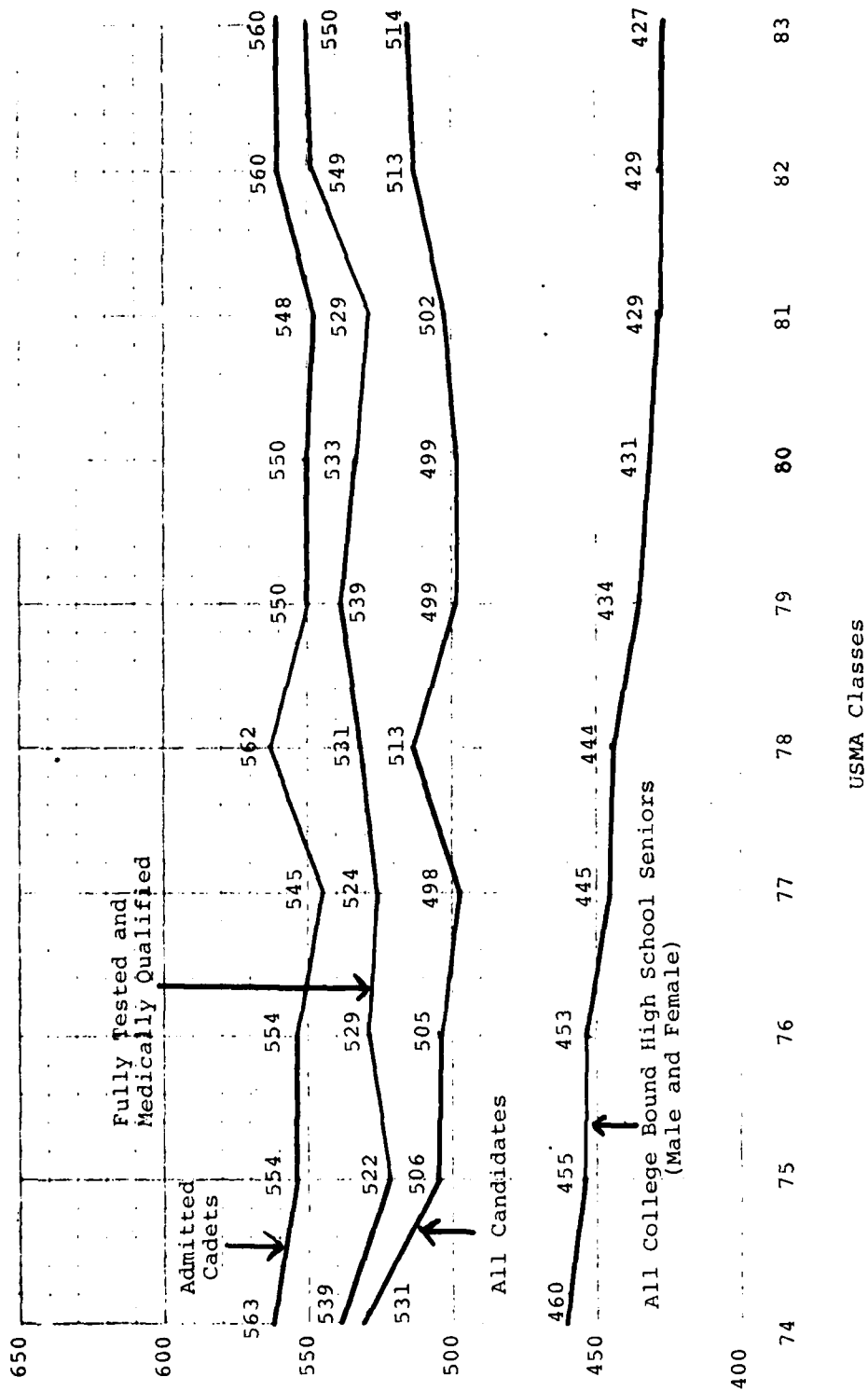


FIGURE 6 TRENDS IN MEAN SAT-VERBAL SCORES FOR THE CANDIDATES AND ENTERING CADETS OF THE CLASSES OF 1974 THROUGH 1983 AND ALL COLLEGE BOUND HIGH SCHOOL SENIORS, NATIONWIDE.

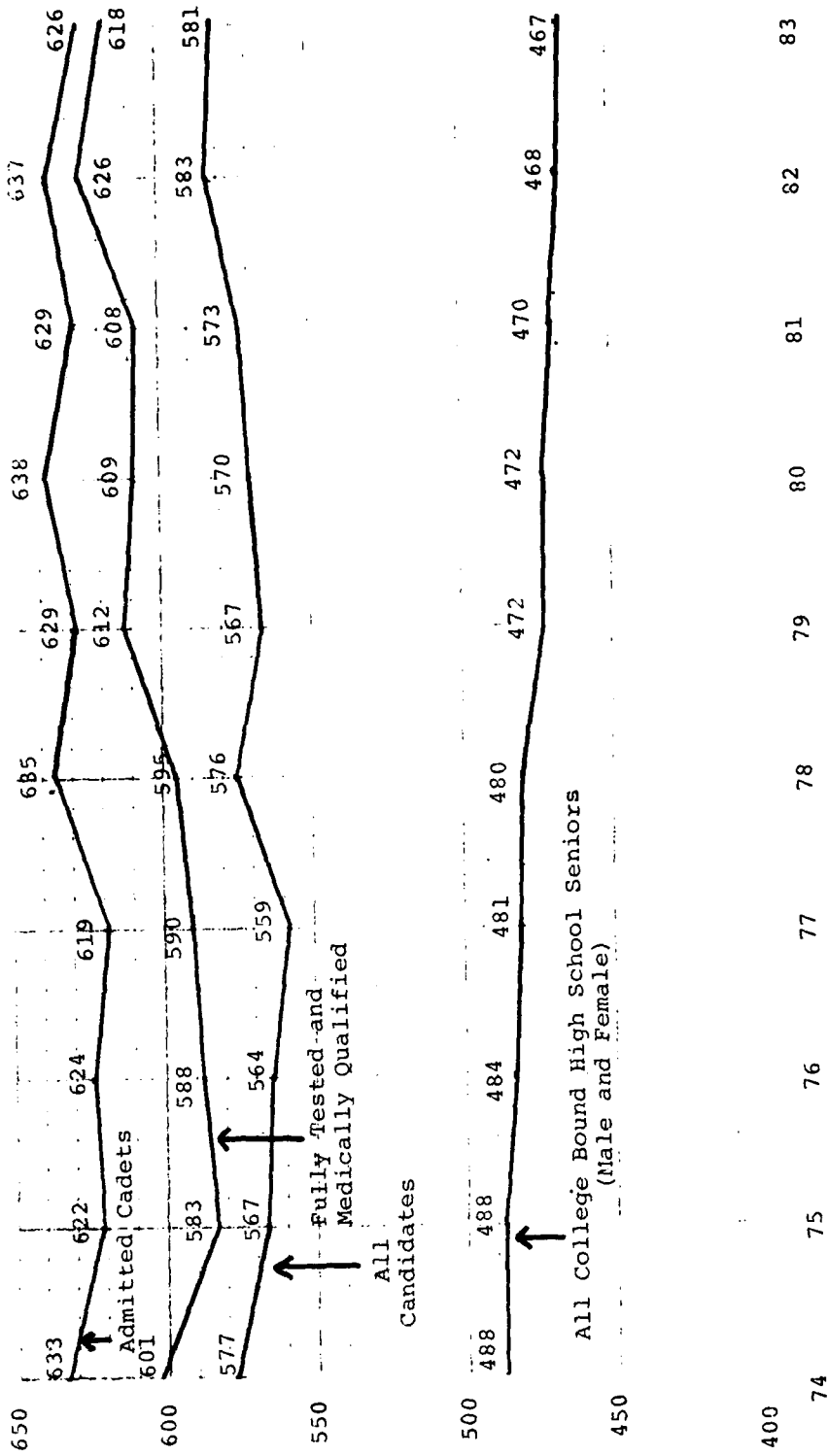


FIGURE 7 TRENDS OF MEAN SAT-MATHEMATICS SCORES FOR CANDIDATES AND ENTERING CADETS OF THE CLASSES OF 1974 THROUGH 1983 AND ALL COLLEGE BOUND HIGH SCHOOL SENIORS, NATIONWIDE.

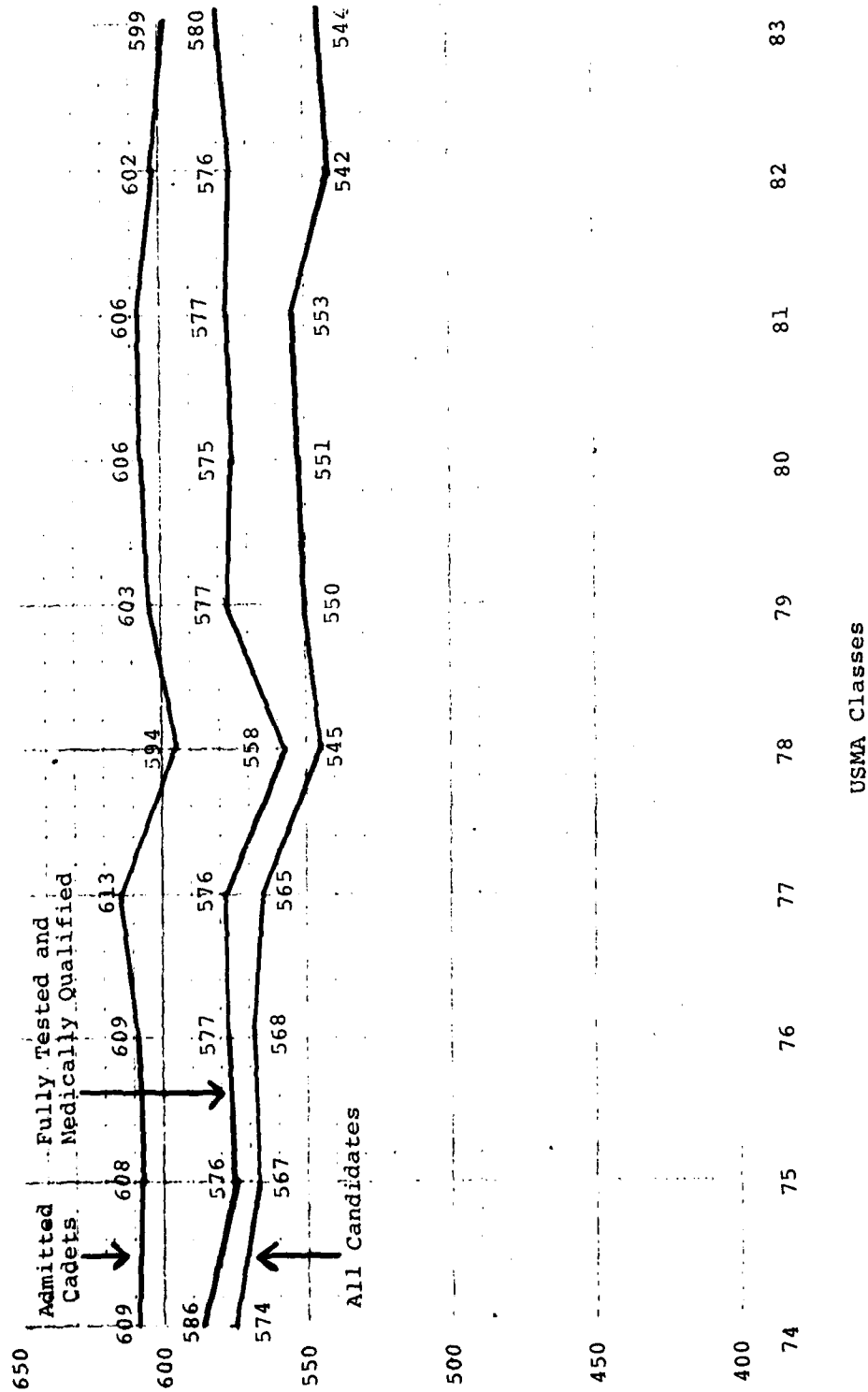
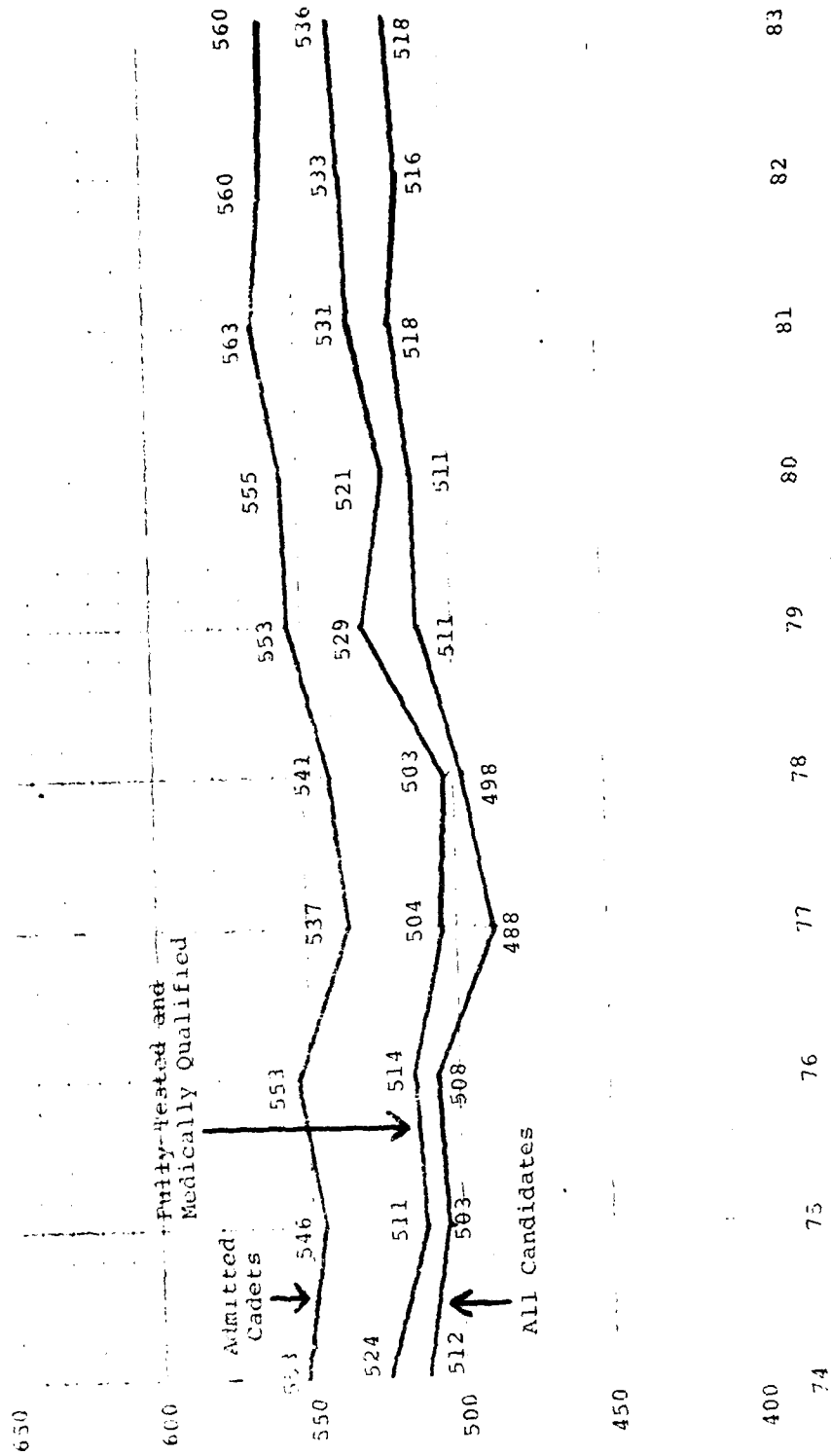


FIGURE 8 TRENDS OF MEAN LEADERSHIP POTENTIAL SCORES FOR THE CANDIDATES AND ENTERING CADETS OF THE CLASSES OF 1974 THROUGH 1983.



USMA Classes

FIGURE 9 TRENDS OF MEAN PAE SCORES FOR THE CANDIDATES AND ENTERING CADETS OF THE CLASSES OF 1974 THROUGH 1983 (PAE for admitted cadets in Class of 1980-1983 is for male cadets only).

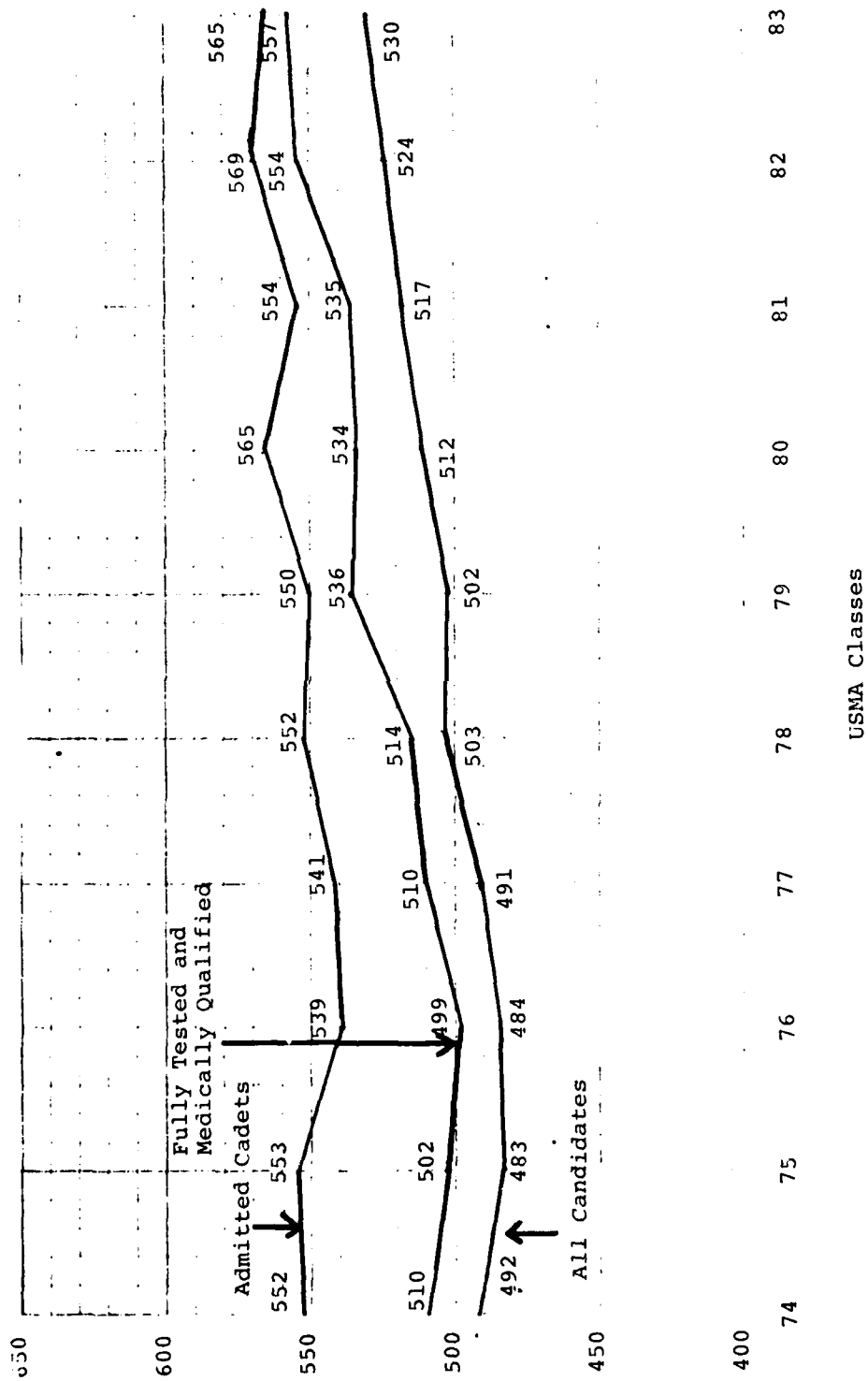
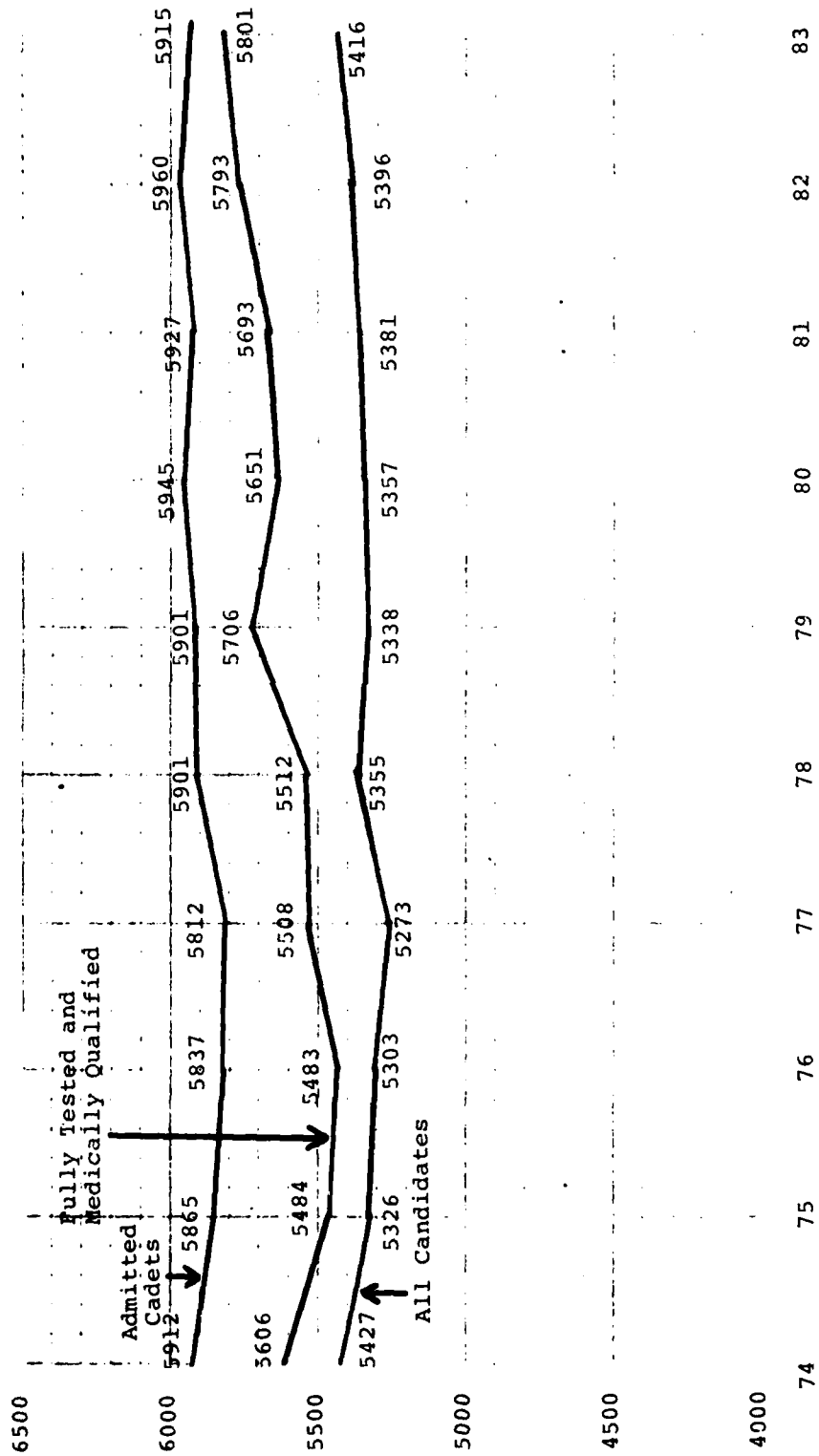


FIGURE 10 TRENDS OF MEAN HIGH SCHOOL RANK SCORES FOR THE CANDIDATES AND CADETS OF THE CLASSES OF 1974 THROUGH 1983.



USMA Classes

FIGURE 11 TRENDS OF MEAN WHOLE CANDIDATE SCORES FOR THE CANDIDATES AND ENTERING CADETS OF THE CLASSES OF 1974 THROUGH 1983.

TABLE 3
SELECTED HIGH SCHOOL ACTIVITIES AND AWARDS OF ENTERING CADETS IN THE CLASSES OF 1975 THROUGH 1983

	CLASS								
	1975	1976	1977	1978	1979	1980	1981	1982	1983
Senior Class President	69 (5.2%)	55 (4.0%)	67 (4.9%)	68 (4.7%)	95 (6.6%)	86 (5.8%)	91 (6.2%)	65 (4.7%)	77 (5.5%)
Senior Class Officer	117 (8.7%)	110 (8.0%)	184(13.4%)	167(11.6%)	163(11.4%)	184(12.4%)	192(13.1%)	177(12.8%)	187(13.4%)
Student Body President	57 (4.3%)	60 (4.4%)	62 (4.5%)	62 (4.3%)	66 (4.6%)	73 (4.9%)	97 (6.6%)	73 (5.3%)	81 (5.8%)
School Club President	600(44.8%)*	701(50.9%)*	713(51.8%)*	648(45.2%)*	686(47.8%)*	715(48.1%)*	739(50.3%)*	660(47.0%)*	657(47.0%)*
Debate Team	144(10.8%)	111 (8.1%)	139(10.1%)	135 (9.4%)	127 (8.9%)	147 (9.9%)	163(11.1%)	160(11.5%)	159(11.4%)
Varsity Lettermen	1029(76.9%)	1112(80.7%)	1079(78.4%)	1137(79.2%)	1138(79.3%)	1199(80.7%)	1219(82.9%)	1161(83.2%)	1151(82.3%)
Team Captains	416(31.1%)	466(33.8%)	458(33.3%)	499(34.8%)	529(36.9%)	562(37.8%)	654(44.5%)	599(42.9%)	629(45.0%)
All	363(27.1%)	473(34.3%)	438(31.8%)	452(31.5%)	528(36.8%)	523(35.2%)	529(36.0%)	527(37.8%)	532(38.1%)
Conference	748(55.9%)	757(54.9%)	794(57.7%)	723(50.4%)	756(52.7%)	790(53.2%)	804(54.7%)	748(53.6%)	761(54.4%)
Scouts, Eagle	205(15.3%)	204(14.8%)	190(13.8%)	184(12.8%)	206(14.4%)	185(12.5%)	209(14.2%)	142(11.2%)	182(13.0%)
Boys/Girls									
State Representative	261(19.5%)	270(19.6%)	293(21.3%)	302(21.0%)	346(24.1%)	311(20.9%)	315(21.4%)	275(19.8%)	310(22.2%)
High School Dramatic Club	189(14.1%)	169(12.3%)	151(11.0%)	153(10.7%)	165(11.5%)	173(11.6%)	209(14.2%)	215(15.5%)	209(14.9%)
Bausch & Lomb									
Science Award	29 (2.2%)	26 (1.9%)	25 (1.8%)	31 (2.2%)	39 (2.7%)	38 (2.6%)	38 (2.6%)	30 (2.2%)	28 (2.0%)
American Legion Award	108 (8.1%)	120 (8.7%)	128 (9.3%)	112 (7.8%)	131 (9.1%)	120 (8.1%)	145 (9.9%)	128 (9.2%)	138 (9.9%)

*President or Vice President.

TABLE 3a

SELECTED CHARACTERISTICS OF CADETS IN THE CLASSES OF 1975 THROUGH 1983

	CLASS								
	1975	1976	1977	1978	1979	1980	1981	1982	1983
Cadets With 1 or More Months of College	191(14.3%)	194(14.1%)	201(14.6%)	195(13.6%)	217(15.5%)	225(15.2%)	263(17.9%)	213(15.3%)	260(18.6%)
Sons or Daugh- ters of Alumni of USMA	66 (4.9%)	59 (4.3%)	64 (4.7%)	50 (3.5%)	64 (4.5%)	59 (4.0%)	62 (4.2%)	57 (4.1%)	59 (4.2%)
Attended USMA Preparatory School	147(11.0%)	156(11.3%)	194(14.1%)	187(13.0%)	211(14.7%)	179(12.1%)	162(11.0%)	211(15.2%)	207(14.8%)
Attended Public High School	1122(83.8%)	1171(85.0%)	1129(82.0%)	1216(84.8%)	1231(85.9%)	1283(86.4%)	1259(85.7%)	1194(85.4%)	1201(85.9%)
Attended Private High School	215(16.1%)	206(15.0%)	247(18.0%)	219(15.2%)	202(14.1%)	198(13.4%)	208(14.2%)	201(14.5%)	197(14.1%)
Rank in High School Class									
Top Fifth	947(70.7%)	966(70.1%)	928(67.4%)	1019(71.0%)	1011(70.6%)	1116(75.2%)	1070(72.9%)	1055(75.5%)	1021(73.0%)
Second Fifth	280(20.9%)	297(21.6%)	317(23.0%)	290(20.2%)	310(21.6%)	260(17.5%)	287(19.5%)	241(17.2%)	253(18.1%)
Third Fifth	96 (7.2%)	98 (7.2%)	106 (7.7%)	99 (6.9%)	90 (6.3%)	90 (6.3%)	95 (6.5%)	89 (6.4%)	102 (7.3%)
Fourth Fifth	10 (0.8%)	14 (1.0%)	21 (1.5%)	20 (1.4%)	15 (1.1%)	12 (0.8%)	13 (0.9%)	8 (0.6%)	18 (1.3%)
Bottom Fifth	4 (0.3%)	2 (0.2%)	2 (0.2%)	5 (0.4%)	2 (0.1%)	3 (0.2%)	2 (0.1%)	2 (0.1%)	3 (0.2%)
Valedictorians	68 (5.1%)	65 (4.7%)	59 (4.3%)	81 (5.6%)	86 (6.0%)	83 (5.6%)	90 (6.1%)	86 (6.2%)	77 (5.5%)
Salutatorians	40 (3.0%)	32 (2.3%)	53 (3.9%)	56 (3.9%)	58 (4.0%)	58 (3.9%)	66 (4.5%)	62 (4.5%)	58 (4.1%)
N =	1339	1378	1376	1435	1433	1485	1469	1396	1398

