

AD-A081 782 ARMY ELECTRONICS RESEARCH AND DEVELOPMENT COMMAND WS--ETC F/G 4/2
19304D 6SRS, MISSILE NUMBERS 1071, 1079, ROUND NUMBERS V-70,V-7--ETC(U)
OCT 79

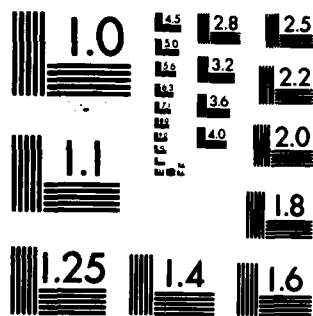
UNCLASSIFIED ERADCOM/ASL-DR-1069

NL

1-1
2-1
3-1
4-1

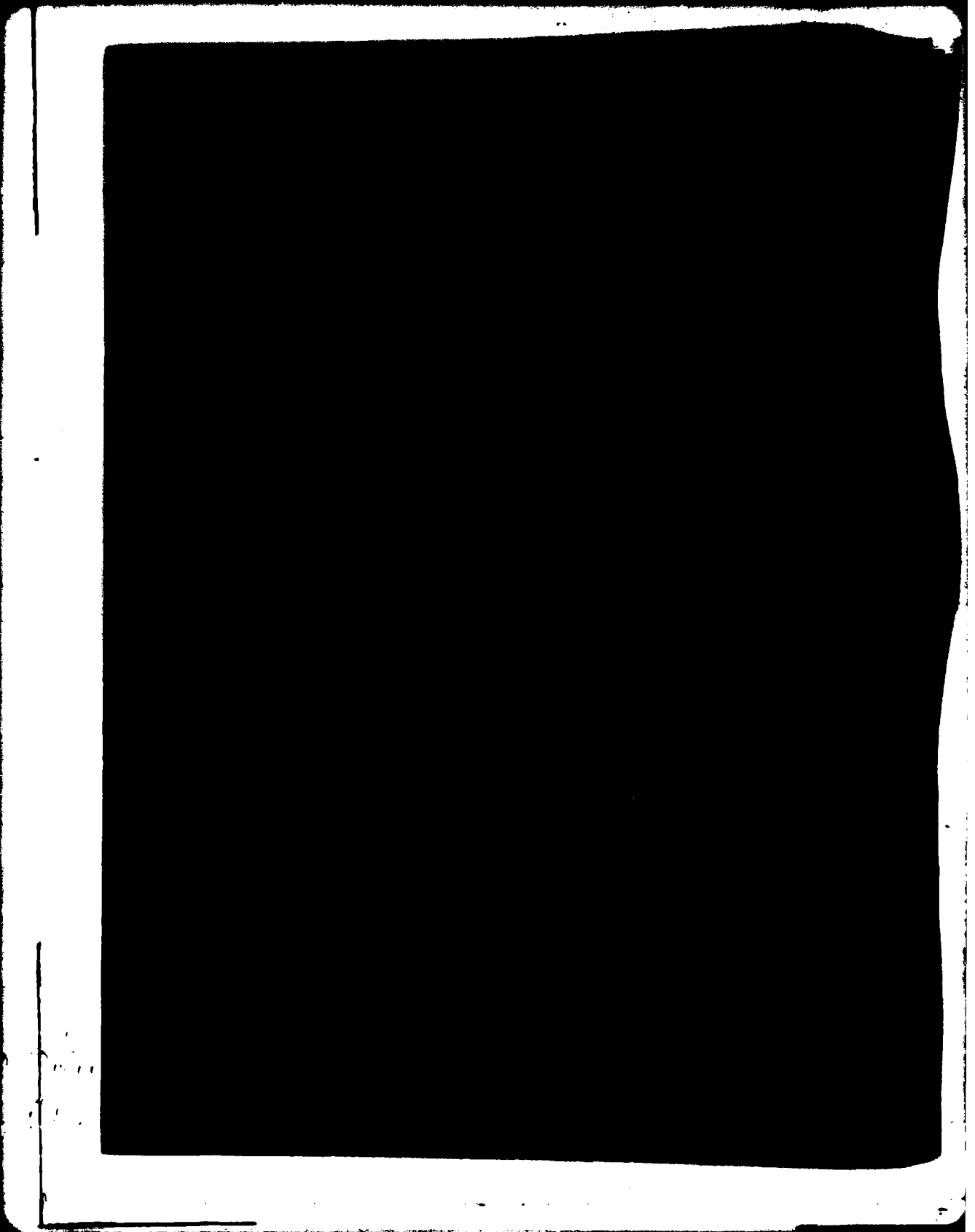


END
DATE
FILMED
4 80
DTIC



MICROCOPY RESOLUTION TEST CHART
NATIONAL BUREAU OF STANDARDS-1963-A

AD. AUGI 782



REPORT DOCUMENTATION PAGE		READ INSTRUCTIONS BEFORE COMPLETING FORM
1. REPORT NUMBER DR-1069	2. GOVT ACCESSION NO.	3. RECIPIENT'S CATALOG NUMBER
4. TITLE (and Subtitle) ⑥ 19304D GSRS, Missile Numbers 1071, 1079, Round Numbers V-70, V-71, 10 October 1979.		5. TYPE OF REPORT & PERIOD COVERED
7. AUTHOR(s) ⑨ White Sands Meteorological Team data rept.		6. PERFORMING ORG. REPORT NUMBER
9. PERFORMING ORGANIZATION NAME AND ADDRESS ⑭ EPADCOM / ASL-DR-1069		8. CONTRACT OR GRANT NUMBER(s) ⑩ DA Task 1F665702D127-02
11. CONTROLLING OFFICE NAME AND ADDRESS US Army Electronics Research & Development Cmd Atmospheric Sciences Laboratory White Sands Missile Range, NM 88002		10. PROGRAM ELEMENT, PROJECT, TASK AREA & WORK UNIT NUMBERS ⑫ 12 15
14. MONITORING AGENCY NAME & ADDRESS (if different from Controlling Office) US Army Electronics Research & Development Cmd Adelphi, MD 20783		12. REPORT DATE ⑪ 11 October 1979
16. DISTRIBUTION STATEMENT (of this Report)		13. NUMBER OF PAGES 15
17. DISTRIBUTION STATEMENT (of the abstract entered in Block 20, if different from Report) Approve for public release; distribution unlimited.		15. SECURITY CLASS. (of this report) UNCLASSIFIED
18. SUPPLEMENTARY NOTES		15a. DECLASSIFICATION/DOWNGRADING SCHEDULE
19. KEY WORDS (Continue on reverse side if necessary and identify by block number) 1. Ballistics 2. Meteorology 3. Wind		
20. ABSTRACT (Continue on reverse side if necessary and identify by block number) Meteorological data gathered for the launching of 19304D GSRS, Missile Numbers 1071, 1079, Round Numbers V-70, V-71, are presented in tabular form. ⑬ 410663 JWB		

CONTENTS

	PAGE
INTRODUCTION-----	1
DISCUSSION-----	1
LAUNCH AREA MAP-----	2
GENERAL AREA MAP-----	3
TABLES:	
1. Surface Observations taken at 0924 MDT-----	4
2. Anemometer-Measured Wind Speed and Direction, LC-33 Fixed Pole, taken at 0924 MDT-----	5
3. Anemometer-Measured Wind Speed and Direction, Tower Levels 1, 2, 3 and 4 taken at 0924 MDT-----	6
4. LC-33 Pilot-Balloon-Measured Wind Data at 0924 MDT-----	7
5. SMR Significant Level Data at 0824 MST-----	8
6. SMR Upper Air Data at 0824 MST-----	9
7. SMR Mandatory Levels at 0824 MST-----	11

Accession For	
NTIS Grant	<input checked="" type="checkbox"/>
DDC TAB	<input type="checkbox"/>
Unannounced Justification	
By _____	
Distribution/	
Availability Codes	
Dist	Avail and/or special
A	

INTRODUCTION

19304D GSRS, Missile Numbers 1071 and 1079, Round Numbers V-70 and V-71, were launched from LC-33, White Sands Missile Range (WSMR), New Mexico, at 0924 and 0924:16 MDT, 10 October 1979. The scheduled launch times were 0900 and 0900:02.5 MDT.

DISCUSSION

Meteorological data were recorded and reduced by the White Sands Meteorological Team, Atmospheric Sciences Laboratory (ASL), White Sands Missile Range, New Mexico. The data were obtained by the following methods:

1. Observations

a. Surface

(1) Standard surface observations to include pressure, temperature ($^{\circ}\text{C}$), relative humidity, dew point ($^{\circ}\text{C}$), density (gm/m^3), wind direction and speed, and cloud cover were made at the LC-33 Met Site at T-0 minutes.

(2) Anemometer data were provided from existing pole-mounted and tower-mounted anemometers at LC-33. Monitor of wind speed and direction from one anemometer was also provided in the launch control room.

b. Upper Air

(1) Low level wind data were obtained from RAPTS T-9 pibal observation at:

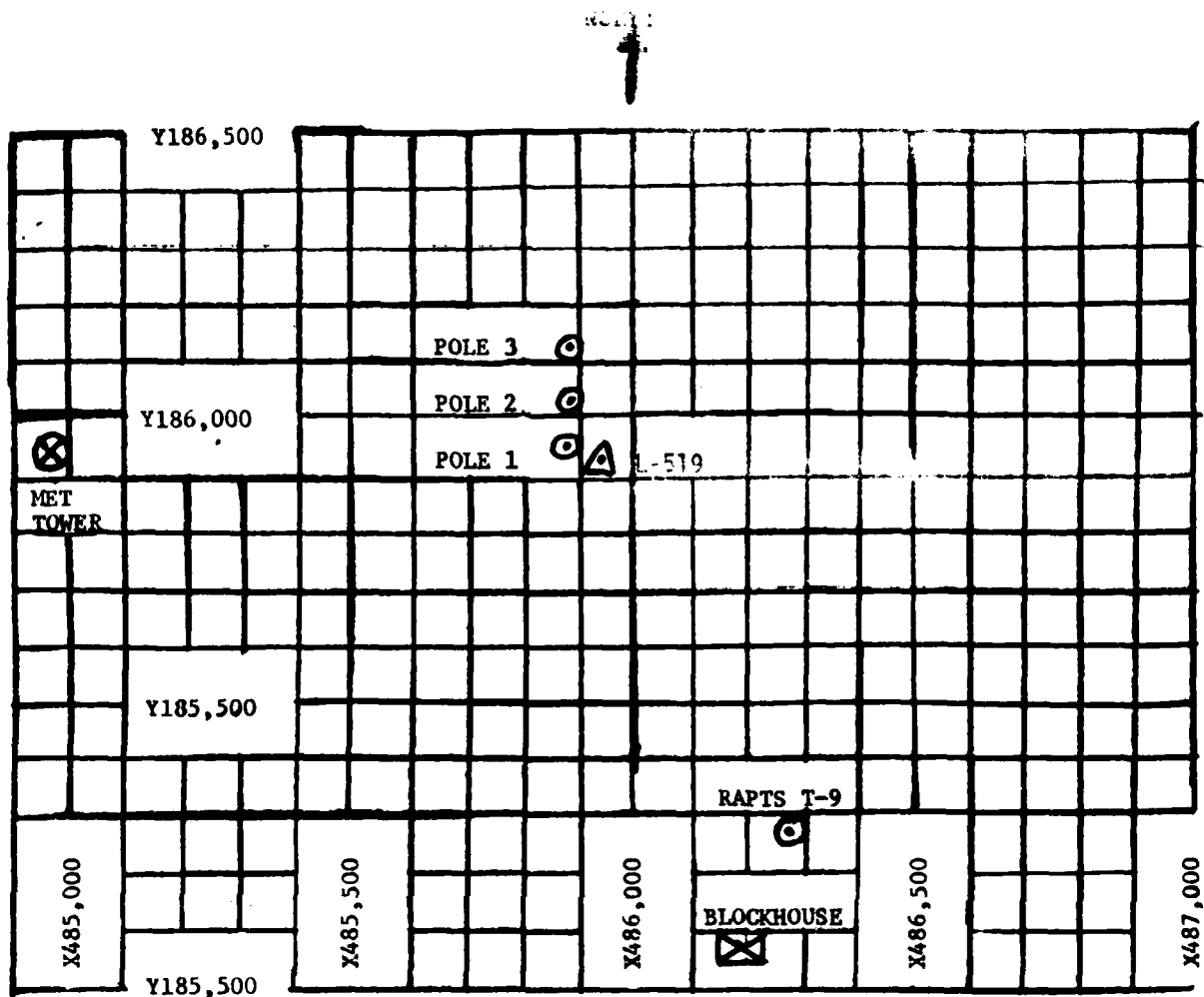
SITE AND ALTITUDE

LC-33 2 KM
NICK 2 KM

(2) Air structure data (rawinsonde) were collected at the following Met Sites. Data were collected from surface to 40, 500 feet in 500-foot increments.

SITE AND TIME

SMR 0824 MST



1. MET TOWER - 4 Bendix Model T-20 Anemometers at 12 ft, 62 ft, 102 ft, and 202 ft with E/A recorders.
2. POLE ANEMOMETER - Bendix Model T-120 with E/A recorders.
 - (a) Pole #1 - 38.7 ft
 - (b) Pole #2 - 53.0 ft
 - (c) Pole #3 - 83.6 ft
3. RPTS T-9 Radar Automatic Pilot-Balloon Tracking System T-9 Radar.

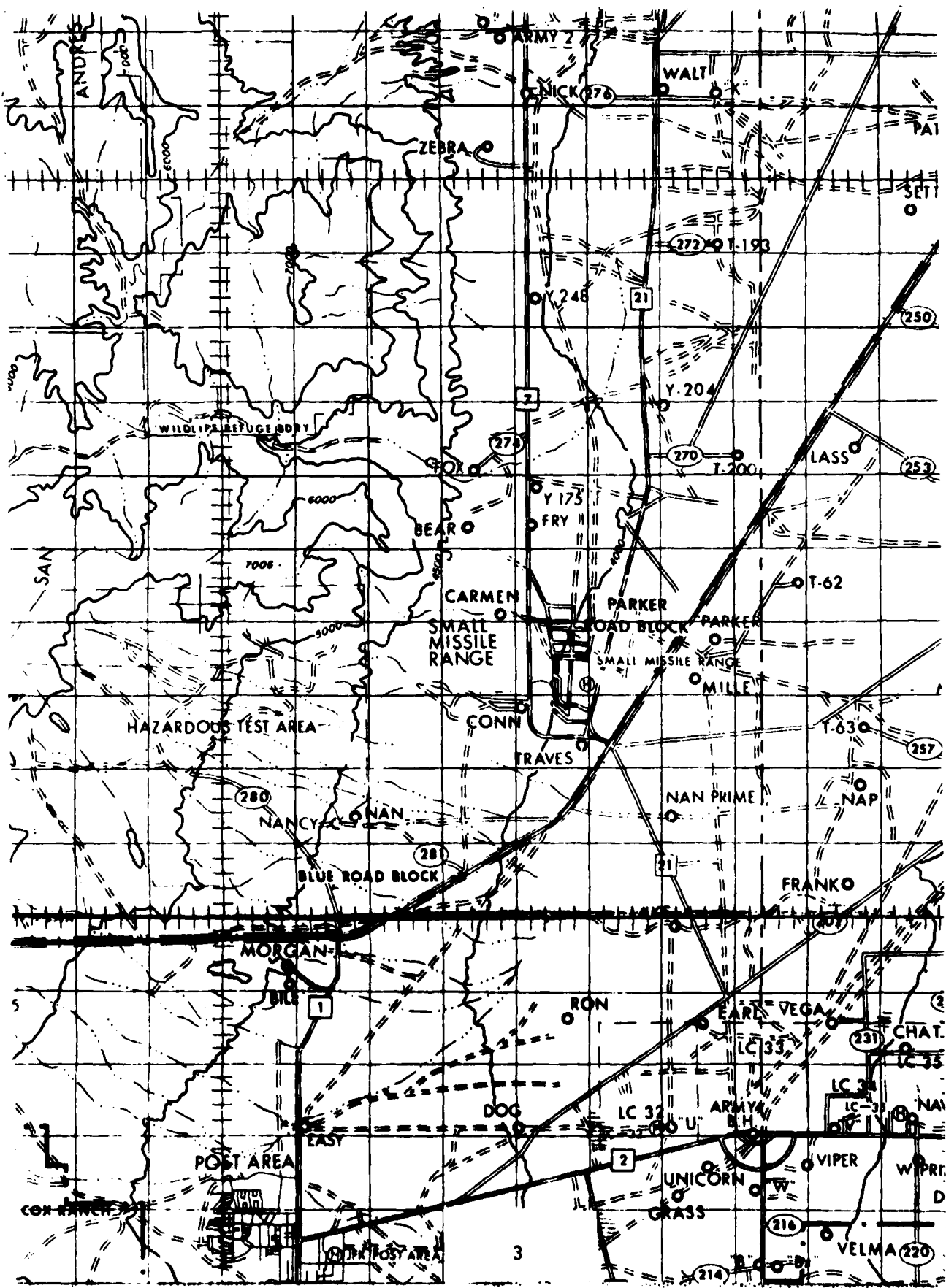


TABLE 1. Surface Observations taken at 0924 MDT,
 10 October 1979, at LC-33, 19304D GSRS,
 Missile Numbers 1071, 1079, Round
 Numbers V-70, V-71.

ELEVATION	3977.30	FT/MSL
PRESSURE	887.3	MBS
TEMPERATURE	14.1	°C
RELATIVE HUMIDITY	45	%
DEW POINT	2.4	°C
DENSITY	1071	GM/M ³
WIND SPEED	CALM	KTS
WIND DIRECTION		DEGREES
CLOUD COVER	CLEAR	

LC-33 FIXED POLE ANEMOMETER MEASURED WINDS

POLE #1			POLE #2			POLE #3		
T-TIME SEC	DIR DEG	SPEED KTS	T-TIME SEC	DIR DEG	SPEED KTS	T-TIME SEC	DIR DEG	SPEED KTS
-30		CALM	-30	MISG	01	-30		CALM
-20		CALM	-20	MISG	01	-20		CALM
-10		CALM	-10		CALM	-10		CALM
0.0		CALM	0.0		CALM	0.0		CALM
+10		CALM	+10		CALM	+10		CALM

POLE #1 = X485,874.29 Y185,958.90 H4018.74 38.7 ft. AGL

POLE #2 = X485,874.93 Y186,012.00 H4033.57 53.0 ft AGL

POLE #3 = X485,877.29 Y186,116.06 H4063.92 83.6 ft AGL

TABLE 2

TYPE 19304D GSRS MISSILE NOS. 1071, 1079 ROUND NOS. V-70, V-71

LAUNCHED FROM LC-33 DATE 10 October 1979 TIMES: 0924:, 0924:16 MDT

NOTE: WIND DIRECTIONS ARE REFERENCED TO TRUE NORTH.

LC-33 METEOROLOGICAL TOWER ANEMOMETER MEASURED WINDS (202 FT TOWER)

LEVEL #1 12 Feet			LEVEL #2 62 Feet		
T-TIME SEC	DIR DEG	SPEED KTS	T-TIME SEC	DIR DEG	SPEED KTS
-30		CALM	-30		CALM
-20	141	02	-20		CALM
-10	141	02	-10		CALM
0.0	141	01	0.0		CALM
+10		CALM	+10		CALM
LEVEL #3 102 Feet			LEVEL #4 202 Feet		
T-TIME SEC	DIR DEG	SPEED KTS	T-TIME SEC	DIR DEG	SPEED KTS
-30		CALM	-30		CALM
-20		CALM	-20		CALM
-10		CALM	-10		CALM
0.0		CALM	0.0		CALM
+10		CALM	+10		CALM

WTSM COORDINATES: X484,982.64 Y185,057.73 H3983.00 (base)

TABLE 3

TYPE 19304D GSR MISSILE NOS. 1071, 1079 ROUND NOS. V-70, V-71

LAUNCHED FROM LC-33 DATE 10 October 1979 TIMES: 0924, 0924:16 MDT

NOTE: WIND DIRECTIONS ARE REFERENCED TO TRUE NORTH.

PILOT BALLOON MEASURED WIND DATA

TABLE 4

RELEASED FROM LC-33 DATE 10 October 1979 TIME 0924 MDT

RELEASED POINT COORDINATES (WSTM) X= 486,037.24 Y= 182,350.16 H= 3977.30

MISSILE TYPE 19304D GSRS MISSILE NO. 1071, 1079 ROUND NO. V-70, V-71

MISSILE LAUNCHED FROM LC-33 DATE 10 October 1979 TIME 0924, 0924:16 MDT

NOTE: WIND DIRECTIONS ARE REFERENCED TO TRUE NORTH.

HEIGHTS ARE METERS AGL

HEIGHT AGL	DIRECTION DEGREES	SPEED KTS
SFC		CALM
90	MISG.	MISG.
150	MISG.	MISG.
210	MISG.	MISG.
270	245	01
330	214	06
390	194	06
500	209	06
650	288	06
800	296	13
950	318	15
1150	313	16
1350	329	23
1550	322	25

HEIGHT AGL	DIRECTION DEGREES	SPEED KTS
1750	314	30
2000	314	32

STATION ALTITUDE 3997.30 FEET MSL
 10 OCT. 79 0824 HRS MST
 ASCENSION NO. 338

SIGNIFICANT LEVEL DATA
 2830080338
 S M R

GEODETIC COORDINATES
 32.48034 LAT DEG
 106.42307 LON DEG

TABLE 5

PRESSURE MILLIBARS	PRESSURE GEOMETRIC ALTITUDE		TEMPERATURE		REL. HUM. PERCENT
	MSL FEET	FEET	AIR DEGREES CENTIGRADE	DEWPOINT CENTIGRADE	
886.1	3997.3		14.7	1.3	40.0
871.2	4466.2		12.5	-1.8	37.0
850.0	5145.0		12.7	-1.8	37.0
841.6	5413.6		12.5	-1.8	37.0
832.0	5735.8		14.5	-8	35.0
812.6	6390.2		14.4	-1.8	33.0
783.8	7395.4		17.1	-6.7	19.0
700.0	10522.3		10.5	-13.5	17.0
594.8	14908.2		1.1	-23.4	14.0
561.4	16417.9		-2.0	-20.8	22.0
500.0	19398.1		-10.4	-22.9	35.0
474.8	20703.5		-12.1	-32.7	16.0
400.0	24939.7		-21.4	-41.7	14.0
318.2	30374.7		-32.1	-49.9	15.0
300.0	31733.6		-35.7		
250.0	35816.2		-46.3		
215.4	39025.9		-53.4		
206.2	39951.4		-53.5		
200.0	40598.0		-55.3		
197.0	40913.0		-56.4		

THIS PAGE IS BEST QUALITY PRACTICABLE
 FROM COPY FURNISHED TO DDC

STATION ALTITUDE 3997.30 FEET MSL
 10 OCT. 79 0824 HRS MST
 ASCENSION NO. 338

UPPER AIR DATA
 2630000330
 S M R

GEODETIC COORDINATES
 32-48034 LAT DEG
 106-42307 LON DEG

TABLE 6

GEOMETRIC ALTITUDE MSL FEET	PRESSURE MILLIBARS	TEMPERATURE		REL. HUM. PERCENT	DENSITY GM/CUBIC METER	SPEED OF SOUND KNOTS	#INJ. DATA DIRECTION DEGREES(TM)	SPEED KNOTS	INDEX OF REFRACTION
		AIR DEGREES	DEWPOINT CENTIGRADE						
3997.3	836.1	14.7	1.3	40.0	1069.3	661.9	0	0	1.000269
4000.0	866.0	14.7	1.2	40.0	1069.3	661.9	259.4	0	1.000269
4500.0	870.1	12.5	-1.8	37.0	1056.7	659.2	259.4	1.5	1.000261
5000.0	854.5	12.7	-1.6	37.0	1039.0	659.4	259.4	3.1	1.000257
5500.0	839.1	13.0	-1.5	36.5	1019.0	659.8	259.4	4.6	1.000252
6000.0	824.1	14.5	-1.1	34.2	995.0	661.5	265.1	6.2	1.000248
6500.0	809.4	14.7	-2.0	31.5	977.2	661.8	268.1	8.9	1.000242
7000.0	795.0	16.0	-4.2	24.5	953.7	663.2	303.1	12.2	1.000233
7500.0	760.8	16.9	-6.9	18.9	930.2	664.0	310.0	16.1	1.000225
8000.0	766.8	15.8	-8.0	18.6	922.9	662.8	321.6	20.4	1.000221
8500.0	753.1	14.8	-9.1	18.3	909.8	661.6	323.6	24.7	1.000217
9000.0	739.6	13.7	-10.2	18.0	890.9	660.3	319.9	27.1	1.000213
9500.0	726.4	12.7	-11.3	17.7	884.2	659.1	315.3	29.2	1.000209
10000.0	713.3	11.6	-12.3	17.3	871.6	657.8	314.7	29.5	1.000205
10500.0	700.6	10.5	-13.4	17.0	859.3	656.0	314.2	29.6	1.000202
11000.0	687.7	9.5	-14.6	16.7	846.7	655.3	313.6	28.8	1.000198
11500.0	675.0	8.4	-15.7	16.3	834.3	654.0	312.1	27.8	1.000194
12000.0	662.6	7.3	-16.8	16.0	822.1	652.8	308.7	26.5	1.000191
12500.0	650.3	6.3	-17.9	15.6	810.1	651.5	305.0	25.4	1.000188
13000.0	638.4	5.2	-19.1	15.3	798.3	650.2	303.5	24.4	1.000184
13500.0	626.6	4.1	-20.2	15.0	786.7	648.9	303.9	23.1	1.000181
14000.0	615.0	3.0	-21.3	14.6	775.2	647.7	310.5	21.9	1.000178
14500.0	603.7	2.0	-22.4	14.3	763.9	646.4	314.2	20.8	1.000175
15000.0	592.5	.9	-23.1	14.5	752.7	645.1	317.8	19.9	1.000172
15500.0	581.4	-1.1	-22.1	17.1	741.3	643.9	319.2	19.7	1.000170
16000.0	570.4	-1.1	-21.3	19.8	730.0	642.8	320.6	19.4	1.000168
16500.0	559.6	-2.2	-20.8	22.4	719.0	641.5	322.7	19.1	1.000166
17000.0	548.8	-3.6	-21.0	24.5	708.9	639.8	323.8	19.1	1.000164
17500.0	538.3	-5.0	-21.2	26.7	698.9	638.1	323.6	19.3	1.000162
18000.0	527.9	-6.5	-21.5	28.9	689.1	636.5	324.1	20.0	1.000159
18500.0	517.8	-7.9	-22.0	31.1	679.4	634.8	324.9	21.1	1.000157
19000.0	507.8	-9.3	-22.4	33.3	669.9	633.1	325.2	22.2	1.000155
19500.0	498.0	-10.5	-23.5	33.5	660.1	631.5	327.7	23.2	1.000152
20000.0	488.2	-11.2	-26.7	26.2	648.9	630.7	333.1	22.8	1.000148
20500.0	478.6	-11.8	-30.7	19.0	637.9	629.9	339.6	22.3	1.000145
21000.0	469.1	-12.8	-33.3	15.9	627.4	626.7	347.1	22.1	1.000142
21500.0	459.7	-13.8	-34.4	15.6	617.5	627.4	354.0	22.3	1.000139
22000.0	450.5	-14.9	-35.4	15.4	607.7	626.1	353.0	23.4	1.000137
22500.0	441.5	-16.0	-36.5	15.2	598.1	624.7	356.5	23.9	1.000135
23000.0	432.7	-17.1	-37.6	14.9	588.6	623.4	359.7	23.1	1.000132

STATION ALTITUDE 3997.30 FEET MSL
 10 OCT. 79 0824 HRS MST
 ASCENSION NO. 338

UPPER AIR DATA
 2630000330
 S M R

GEODETIC COORDINATES
 32.48034 LAT DEG
 106.42307 LON DEG

TABLE 6 Cont.

GEOMETRIC ALTITUDE MSL FEET	PRESSURE MILLIBARS	AIR TEMPERATURE DEGREES CENTIGRADE	REL. HUM. PERCENT	DENSITY GM/CUBIC METER	SPEED OF SOUND KNOTS	DIRECTION DEGREES (IN)	WIND DATA SPEED KNOTS	INJEX OF REFRACTION
23500.0	424.0	-18.2	14.7	579.3	622.1	3.9	22.3	1.000130
24000.0	415.5	-19.3	14.4	570.2	620.7	9.5	21.5	1.000128
24500.0	407.2	-20.4	14.2	561.2	619.4	13.1	21.8	1.000126
25000.0	399.0	-21.5	14.0	552.3	618.0	14.4	22.9	1.000124
25500.0	390.7	-22.5	14.1	542.9	616.8	15.7	23.8	1.000122
26000.0	382.5	-23.5	14.2	533.7	615.6	17.0	24.4	1.000120
26500.0	374.6	-24.5	14.3	524.7	614.4	20.1	25.0	1.000118
27000.0	366.8	-25.5	14.4	515.8	613.2	24.3	25.8	1.000116
27500.0	359.1	-26.4	14.5	507.1	611.9	24.6	25.3	1.000114
28000.0	351.7	-27.4	14.6	498.5	610.7	22.0	24.1	1.000112
28500.0	344.3	-28.4	14.7	490.1	609.5	14.3	22.6	1.000110
29000.0	337.2	-29.4	14.7	481.8	608.3	1.4	21.8	1.000108
29500.0	330.1	-30.4	14.8	473.7	607.0	349.9	23.8	1.000106
30000.0	323.3	-31.4	14.9	465.7	605.8	341.6	27.6	1.000104
30500.0	316.5	-32.4	13.6**	458.0	604.5	337.0	31.1	1.000102
31000.0	309.7	-33.8	8.1**	450.6	602.8	334.0	34.7	1.000101
31500.0	303.1	-35.1	2.6**	443.5	601.1	332.1	37.5	1.000099
32000.0	296.5	-36.4		436.2	599.4	330.0	40.2	1.000097
32500.0	289.9	-37.7		428.9	597.8	329.2	42.3	1.000096
33000.0	283.5	-39.0		421.8	596.1	327.9	44.4	1.000094
33500.0	277.2	-40.3		414.8	594.5	326.4	45.9	1.000092
34000.0	271.1	-41.6		407.9	592.8	325.0	47.4	1.000091
34500.0	265.1	-42.9		401.1	591.2	323.9	48.8	1.000089
35000.0	259.3	-44.2		394.5	589.5	322.9	50.4	1.000088
35500.0	253.6	-45.5		388.0	587.8	321.8	52.4	1.000086
36000.0	247.9	-46.7		381.3	586.2	319.8	54.3	1.000085
36500.0	242.2	-47.8		374.4	584.6	318.2	56.0	1.000083
37000.0	236.6	-48.9		367.6	583.4	314.0	56.6	1.000082
37500.0	231.2	-50.0		361.0	581.9	314.2	55.0	1.000080
38000.0	225.9	-51.1		354.5	580.3	315.4	54.0	1.000079
38500.0	220.7	-52.2		348.1	578.9	318.3	54.3	1.000078
39000.0	215.7	-53.3		341.8	577.6	320.0	55.7	1.000076
39500.0	210.6	-53.5		334.0	577.4	318.8	59.3	1.000074
40000.0	205.7	-53.6		326.5	577.2			1.000073
40500.0	200.9	-55.0		320.9	575.4			1.000071

** AT LEAST ONE ASSUMED RELATIVE HUMIDITY VALUE WAS USED IN THE INTERPOLATION.

STATION ALTITUDE 3997.30 FEET MSL
 10 OCT. 79 0824 HRS MST
 ASCENSION I.O. 538

MANDATORY LEVELS
 26300.0556
 S M R

GEODETIC COORDINATES
 32.46034 LAT DEG
 106.42307 LON DEG

TABLE 7

PRESSURE GEOPOTENTIAL		TEMPERATURE		REL. HUMID.		WIND DATA	
MILLIBARS	FEET	AIR DEGREES	DEWPOINT CENTIGRADE	PERCENT	DIRECTION DEGREES (IN)	SPEED KNOTS	
850.0	5141.	12.7	-1.0	37.	259.4	5.5	
800.0	6619.	15.6	-3.4	27.	296.3	11.0	
750.0	8015.	14.5	-9.3	18.	323.8	25.6	
700.0	10512.	10.5	-13.5	17.	314.2	29.6	
650.0	12519.	6.2	-18.0	16.	305.7	25.4	
600.0	14652.	1.6	-22.0	14.	315.5	20.5	
550.0	16931.	-3.5	-20.9	24.	323.8	19.0	
500.0	19371.	-10.4	-22.9	35.	327.4	23.0	
450.0	22011.	-15.0	-35.5	15.	355.1	23.4	
400.0	24098.	-21.4	-41.7	14.	14.2	22.8	
350.0	28089.	-27.6	-46.4	15.	22.1	23.8	
300.0	31670.	-35.7			331.4	30.6	
250.0	35737.	-46.3			321.1	53.7	
200.0	40497.	-55.3					

** AT LEAST ONE ASSUMED RELATIVE HUMIDITY VALUE WAS USED IN THE INTERPOLATION.

THIS PAGE IS BEST QUALITY PRACTICABLE
 FROM CURT FORNBERG TO DDC