

AD-A082 633

TEXAS UNIV AT ARLINGTON DEPT OF MATHEMATICS F/G 12/1
PROPERTIES OF DIFFERENTIAL EQUATIONS THROUGH DIFFERENT MEASURES--ETC(U)
MAR 80 V LAKSHMIKANTHAM DAA629-77-g-0062

UNCLASSIFIED

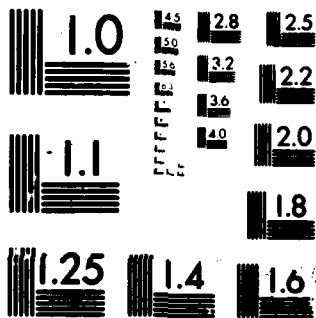
ARO-13881.17-M

NL

For
at
www.gpo.gov



END
DATE
FILMED
5-80
DTIC



MICROCOPY RESOLUTION TEST CHART
NATIONAL BUREAU OF STANDARDS-1963-A

Unclassified

SECURITY CLASSIFICATION OF THIS PAGE (When Data Entered)

REPORT DOCUMENTATION PAGE

READ INSTRUCTIONS BEFORE COMPLETING FORM

1. REPORT NUMBER: 19 13881.17-M; 2. GOVT ACCESSION NO.: 18 ARO; 3. RECIPIENT'S CATALOG NUMBER

4. TITLE (and Subtitle): 6 Properties of Differential Equations Through Different Measures; 5. TYPE OF REPORT & PERIOD COVERED: 9 Final Report, 1 Jan 77 - 31 Dec 79

7. AUTHOR(s): 19 V. Lakshmikantham; 8. CONTRACT OR GRANT NUMBER(s): 15 DAAG29-77-G-0062

9. PERFORMING ORGANIZATION NAME AND ADDRESS: University of Texas, Arlington, Texas 76019; 10. PROGRAM ELEMENT, PROJECT, TASK AREA & WORK UNIT NUMBERS

11. CONTROLLING OFFICE NAME AND ADDRESS: U. S. Army Research Office, P. O. Box 12211, Research Triangle Park, NC 27709; 12. REPORT DATE: 11 Mar 80; 13. NUMBER OF PAGES: 7

14. MONITORING AGENCY NAME & ADDRESS (if different from Controlling Office): 12 8; 15. SECURITY CLASS. (of this report): Unclassified; 15a. DECLASSIFICATION/DOWNGRADING SCHEDULE

16. DISTRIBUTION STATEMENT (of this Report): Approved for public release; distribution unlimited. DTIC SELECTED MAR 01 1980

17. DISTRIBUTION STATEMENT (of the abstract entered in Block 20, if different from Report): A

18. SUPPLEMENTARY NOTES: The view, pinions, and/or findings contained in this report are those of the author(s) and should not be construed as an official Department of the Army position, policy, or decision, unless so designated by other documentation.

19. KEY WORDS (Continue on reverse side if necessary and identify by block number): differential equations, iteration, reaction-diffusion equations, bifurcation theory, Banach space, stochastic processes, delay equations, integral equations

20. ABSTRACT (Continue on reverse side if necessary and identify by block number): Research is briefly summarized which essentially eight areas of research: (1) reaction-diffusion equations; (2) quasi-solutions and large scale systems; (3) monotone iterative techniques; (4) Hopf bifurcation; (5) basic theory of differential equations in Banach spaces; (6) Sobolev type differential and integral equations; (7) stochastic differential equations; and (8) differential equations with infinite delay.

411682

AD A 082633

DDC FILE COPY.

FINAL REPORT

1. ARO PROPOSAL NUMBER: 13881-M
2. PERIOD COVERED BY REPORT: January 1, 1977 - December 31, 1979
3. TITLE OF PROPOSAL: Properties of Differential Equations Through
Different Measures
4. CONTRACT OR GRANT NUMBER: USARO Grant DAAG29-77-G-0062
5. NAME OF INSTITUTION: The University of Texas at Arlington
6. AUTHOR(S) OF REPORT: V. Lakshmikantham
7. LIST OF MANUSCRIPTS SUBMITTED OR PUBLISHED UNDER ARO SPONSORSHIP DURING THIS PERIOD, INCLUDING JOURNAL REFERENCES:

- Chandra, J., Lakshmikantham, V., and Mitchell, A. R. "Existence of solutions of boundary value problems for nonlinear second order systems in a Banach space". *Nonlinear Analysis*, 2 (1978), 157-168.
- Cramer, E., Lakshmikantham, V., and Mitchell, A. R. "On the existence of weak solutions of differential equations in non-reflexive Banach spaces." *Nonlinear Analysis*, 2 (1978), 169-177.
- Leela, S. "Stability of differential systems with impulsive perturbations in terms of two measures." *Nonlinear Analysis* 1 (1977), 667-677.
- Leela, S., and Moauro, V. "Existence of solutions in a closed set for delay differential equations in Banach spaces". *Nonlinear Analysis*, 2 (1978), 47-58.
- Lakshmikantham, V., and Lord, M. "Sobolev-type differential equations". *Appl. Math. Comp.*, 4 (1978), 47-55.
- Bernfeld, S. R., Eisenfeld, J., and Cheng, S. "Identification problems and method of moments". *Math. Bios.*, 36 (1977), 199-211.
- Lakshmikantham, V., Leela, S., and Moauro, V. "Existence and uniqueness of solutions of delay differential equations on a closed subset of a Banach space." *Nonlinear Analysis*, 2 (1978), 311-327.
- Chandra, J., Lakshmikantham, V., and Leela, S. "A monotone method for infinite systems of nonlinear boundary value problems". *Arch. Rat. Mech. Anal.*, 68 (1978), 179-190.
- Bernfeld, S., and Lakshmikantham, V. "Monotone methods for nonlinear boundary value problems in Banach spaces". *Nonlinear Analysis*, 3 (1979), 303-316.
- Lakshmikantham, V., and Vaughn, R. "Parabolic differential inequalities in cones". *Appl. Anal.*, 9 (1979), 257-266.

80 3 26 074

- Lakshmikantham, V., and Vaughn, R. "Reaction-diffusion inequalities in cones". *J. Math. Anal. & Appl.*, 70 (1979), 1-9.
- Lakshmikantham, V., and Leela, S. "A technique in stability theory of delay-differential equations". *Nonlinear Analysis*, 3 (1979), 317-323.
- Bernfeld, S. R., and Haddock, J. R. "Liapunov-Razumikhin functions and convergence of solutions of functional differential equations". *Appl. Anal.*, 9 (1979), 235-245.
- Ladde, G., and Lakshmikantham, V. "Stochastic differential inequalities of Ito type". *Proc. Conf. on Stochastic Systems*. Athens, Georgia, Academic Press (to appear), U.T.A. Tech. Report #87.
- Deimling, K., and Lakshmikantham, V. "On existence of extremal solutions of differential equations in Banach spaces". *Nonlinear Analysis*, 3 (1979), 563-568.
- Deimling, K., and Lakshmikantham, V. "Existence and comparison theorems for differential equations in Banach spaces". *Nonlinear Analysis*, 3 (1979), 569-575.
- Lakshmikantham, V. "Reaction-diffusion equations in abstract cones". Lecture notes of talks delivered at the Conference on *A Survey of Theoretical and Numerical Trends in Nonlinear Analysis*. Bari, Italy, (1979), 121-156.
- Bernfeld, S. R., and Salvadori, L. "Generalized Hopf bifurcation". *Proc. of a Conf. at Trieste, Italy* (to appear).
- Ladde, G. S., and Lakshmikantham, V. "Competitive-cooperative processes and stability of diffusion systems". *Proc. Conf. on Stochastic Systems*. Academic Press (to appear). U.T.A. Tech. Report #89.
- Lakshmikantham, V., Vatsala, A. S., and Vaughn, R. L. "Existence and comparison results for a class of Volterra integral equations of Sobolev type". *J. Integral Eqs.*, 1 (1979), 183-191.
- Bernfeld, S. R., and Salvadori, L. "Generalized Hopf bifurcation and h -asymptotic stability". *Nonlinear Analysis* (to appear). U.T.A. Tech. Report #122.
- Lakshmikantham, V., and Leela, S. "Cone valued Lyapunov functions and large scale systems". *Proc. JAAC, Denver, Colorado, 1979*.
- Vatsala, A. S., and Vaughn, R. L. "Existence and comparison results for differential equations of Sobolev type". (to appear). U.T.A. Tech. Report #100.
- Corduneanu, C., and Lakshmikantham, V. "Equations with unbounded delay: a survey". *Nonlinear Analysis* (to appear). U.T.A. Tech. Report #113.
- Deimling, K., and Lakshmikantham, V. "Quasi-solutions and their role in the qualitative theory of differential equations". *Nonlinear Analysis* (to appear). U.T.A. Tech. Report #112.
- Bernfeld, S. R., and Lakshmikantham, V. "Practical stability and Lyapunov functions". *Tohoku Math. J.* (to appear). U.T.A. Tech. Report #118.
- Vatsala, A. S., and Vaughn, R. L. "Existence of extremal solutions and comparison results for delay differential equations in abstract cones". *Rendi Conti Padua* (to appear). U.T.A. Tech. Report #114.
- Vidossich, G. "Comparison, existence, uniqueness and successive approximations for the Dirichlet problem of elliptic equations". To appear. U.T.A. Tech. Report #119.

Vidossich, G. "On the existence and uniqueness of periodic solutions of second order ordinary differential equations". To appear. U.T.A. Tech. Report #120.

Vidossich, G. "On the existence of positive solutions for nonlinear elliptic equations". To appear. U.T.A. Tech. Report #123.

Bernfeld, S. R., and Salvadori, L. "Generalized Hopf bifurcation in R^n and h-asymptotic stability". Proc. of Diff. Eqs. in Oklahoma, Academic Press (to appear). U.T.A. Tech. Report #121.

8. SCIENTIFIC PERSONNEL SUPPORTED BY THIS PROJECT AND DEGREES AWARDED DURING THIS REPORTING PERIOD:

1. Dr. V. Lakshmikantham
2. Dr. S. R. Bernfeld
3. Dr. S. Leela
4. Dr. A. R. Mitchell
5. Dr. R. W. Mitchell
6. Dr. G. S. Ladde
7. Dr. C. Corduneanu
8. Dr. A. S. Vatsala
9. Dr. R. Kannan
10. Dr. G. Vidossich

13881-M

Dr. V. Lakshmikantham
 The University of Texas at Arlington
 Department of Mathematics
 Box Number 19408
 Arlington, Texas 76019

A

BRIEF OUTLINE OF THE MOST IMPORTANT RESULTS

There were essentially eight areas of research that we addressed ourselves to during the period January 1, 1977 to December 31, 1979. These are:

- (i) reaction-diffusion equations;
- (ii) quasi-solutions and large scale systems;
- (iii) monotone iterative techniques;
- (iv) Hopf bifurcation;
- (v) basic theory of differential equations in Banach spaces;
- (vi) Sobolev type differential and integral equations;
- (vii) stochastic differential equations;
- (viii) differential equations with infinite delay.

In the theory of differential inequalities for systems, one usually imposes a condition known as quasi-monotone property. This property is also needed in the study of large scale systems by the method of vector Lyapunov functions. However in many physical situations this property is not satisfied and consequently there has been a demand to circumvent this unpleasant difficulty. We have offered in (i) and (ii) two alternatives, namely (a) working through appropriate cones rather than R_+^n and (b) using the new notion of quasi-solutions. A number of important results concerning reaction-diffusion inequalities in cones are obtained which can be utilized to prove flow-invariance, to obtain upper and lower bounds, to study the qualitative behavior such as stability and to investigate weakly coupled reaction-diffusion systems. The notion of quasi-solutions is systematically developed and the role of such solutions in the investigation of qualitative properties of large scale systems is demonstrated.

In (iii), we extended monotone iterative techniques to countable nonlinear systems of boundary value problems obtaining extremal solutions. This needed finding a generalized maximum principle. Since the method has wide applicability to systems of partial differential equations of elliptic-parabolic type and to numerical considerations via the method of lines, we generalized monotone methods to boundary value problems in Banach spaces. These results have been important and have given rise to further study by other mathematicians. There are still several open problems that are difficult and are under investigation.

The generalized Hopf bifurcation problem was considered in (iv). Results on the number of periodic orbits of differential systems in a neighborhood of a structurally unstable system (linear part has two purely imaginary eigenvalues) were given. A precise relationship between the strength of stability of the origin of the unperturbed system and the number of bifurcating orbits near the origin was provided in R^2 . The question in R^n is presently being pursued.

The item (v) deals with a number of interesting results. Since the standard cones of many infinite dimensional spaces have empty interior, contrary to known results, we have considered existence of extremal solutions of differential equations in Banach spaces, without assuming the cone has interior points. Also, we have extended Müller's results for R^n to Banach spaces, that is, proving comparison theorems without assuming quasi-monotonicity. Some other important contributions deal with proving existence and uniqueness results in closed sets for differential equations with finite delay in Banach spaces. All of these results have influenced further work by other scientists.

In (vi) a new type of differential equation is studied, originally hinted by Sobolev for solving Fredholm integral equations using an imbedding technique which involves solving initial value problems for the resolvent kernel. For these Sobolev-type differential equations the following basic results were obtained: the Picard existence theorem, variation of constants formula, Gronwall type inequalities, existence of extremal solutions, a comparison principle, and Peano's type of existence result (for the Volterra integral equations of Sobolev type). It is hoped that this new type of dynamical systems will be useful in further applications and yield interesting new properties.

In (vii) the theory of stochastic differential inequalities, minimal and maximal solutions, and a comparison principle were developed for equations of Ito type. Also considered was the connective stability analysis of Ito-type diffusion competitive-cooperative systems. This lead to results on the invariability of stability under structural perturbations, the tolerance of the complexity of the system and the reliability of the stability of the system. Equations of Ito type are basic in application to engineering and scientific problems.

The survey of equations with infinite delay given in (viii) is to provide an up-to-date account of the basic results and problems of the theory of such equations. This theory has emerged as an independent branch of the modern research in the field of mathematical analysis, with its specific problems and many connections to the applied areas. It heavily depends on the properties of function spaces, whose elements are defined on noncompact sets and on the properties of operators acting on such spaces. The study of such equations was motivated by various applications such as mechanics of continua, population

dynamics and ecology, system theory, nuclear reactor dynamics, pseudo-transport problems and neural interactions. The survey lists about 280 references and has emerged as a very important contribution.

Among other results obtained we mention a new comparison theorem for BVP's which corresponds to the well known comparison result for IVP's. Utilizing this new comparison result several results such as existence, uniqueness, convergence of successive approximations and periodic solutions have been proved for elliptic differential equations. Also new comparison theorems were obtained for studying stability and convergence properties of solutions of functional differential equations. The main techniques included Razumikhin's method as well as auxiliary functions.