

AD-A082 967 ARMY ELECTRONICS RESEARCH AND DEVELOPMENT COMMAND WS--ETC F/8 4/2
193088 MLRS; MISSILE NUMBER 1091, ROUND NUMBER V-96, 8 DECEMBER--ETC(U)
DEC 79

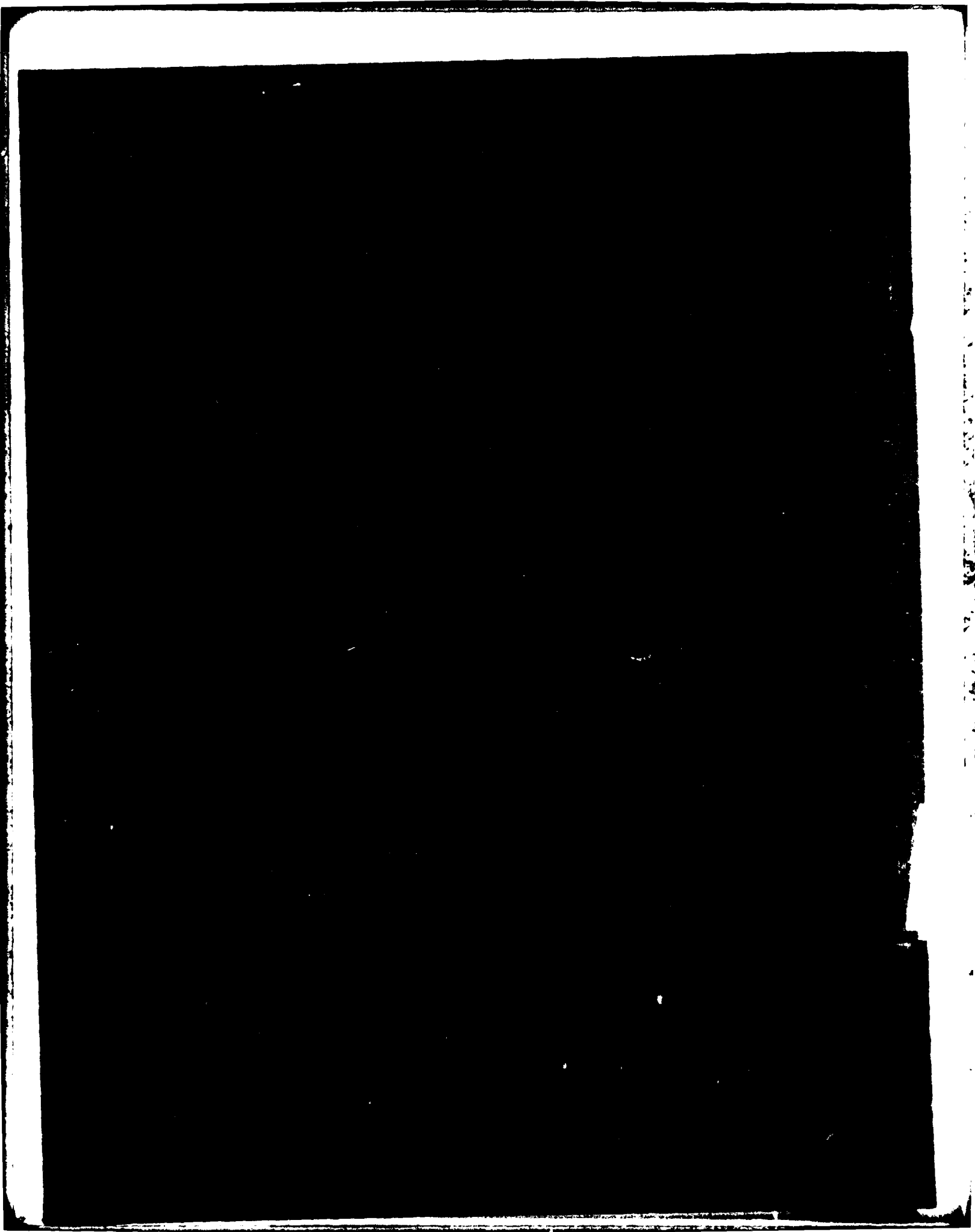
UNCLASSIFIED ERADCOM/ASL-DR-1101

NL

1 of 1
AD-A082 967



END
DATE
FILMED
5-80
DTIC



DISCLAIMER NOTICE

THIS DOCUMENT IS BEST QUALITY PRACTICABLE. THE COPY FURNISHED TO DTIC CONTAINED A SIGNIFICANT NUMBER OF PAGES WHICH DO NOT REPRODUCE LEGIBLY.

14 EMDDC 11/11 SL-DR-1191

SECURITY CLASSIFICATION OF THIS PAGE (When Data Entered)

REPORT DOCUMENTATION PAGE		READ INSTRUCTIONS BEFORE COMPLETING FORM
1. REPORT NUMBER 1101-DR	2. GOVT ACCESSION NO.	3. RECIPIENT'S CATALOG NUMBER
4. AUTHOR(s) 193088 MLRS Missile Number 1091, Round Number V-96		5. TYPE OF REPORT & PERIOD COVERED
7. AUTHOR(s) 9 White Sands Meteorological Team		6. PERFORMING ORG. REPORT NUMBER
9. PERFORMING ORGANIZATION NAME AND ADDRESS White Sands Meteorological Team		8. CONTRACT OR GRANT NUMBER(s) 16 DA Task 1F665702D127-02
11. CONTROLLING OFFICE NAME AND ADDRESS US Army Electronics Research & Development Cmd Atmospheric Sciences Laboratory White Sands Missile Range, New Mexico 88002		10. PROGRAM ELEMENT, PROJECT, TASK AREA & WORK UNIT NUMBERS 17 19 22
14. MONITORING AGENCY NAME & ADDRESS (if different from Controlling Office) US Army Electronics Research & Development Cmd Adelphi, MD 20783		12. REPORT DATE December 1979
		13. NUMBER OF PAGES 14 12 15
		15. SECURITY CLASS. (of this Report) UNCLASSIFIED
16. DISTRIBUTION STATEMENT (of this Report)		
17. DISTRIBUTION STATEMENT (of the abstract entered in Block 20, if different from Report) Approved for public release; distribution unlimited.		15a. DECLASSIFICATION/DOWNGRADING SCHEDULE
18. SUPPLEMENTARY NOTES		Accession For NTIS GRA&I <input checked="" type="checkbox"/> DDC TAB <input type="checkbox"/> Unannounced <input type="checkbox"/> Justification
19. KEY WORDS (Continue on reverse side if necessary and identify by block number)		By Distribution/ Availability Codes Dist Avail and/or special A 23 OP
20. ABSTRACT (Continue on reverse side if necessary and identify by block number) Meteorological data gathered for the launching of the 193088 MLRS, Missile Number 1091, Round Number V-96 are presented in tabular form.		

DD FORM 1 JAN 73 1473

EDITION OF 1 NOV 65 IS OBSOLETE

UNCLASSIFIED

SECURITY CLASSIFICATION OF THIS PAGE (When Data Entered)

4100

JOP

CONTENTS

	PAGE
INTRODUCTION-----	1
DISCUSSION-----	1
TABLES:	
1. Surface Observations taken at 0845 MST at D 3½-----	2
2. D 3½ Pilot Balloon Measured Wind Data at 0845 MST-----	3
3. DENVER Pilot Balloon Measured Wind Data at 0845 MST-----	4
4. NW30 Significant Level Data at 0830 MST-----	5
5. NW30 Upper Air Data at 0830 MST-----	6
6. NW30 Mandatory Levels at 0830 MST-----	10

INTRODUCTION:

19308B MLRS, Missile Number 1091, Round Number V-96,
was launched from BRILLO, White Sands Missile Range (WSMR), New Mexico,
at 0844:06 MST on 08 December 1979. The scheduled launch time was
0830 MST.

DISCUSSION

Meteorological data were recorded and reduced by the White Sands Meteorological Team, Atmospheric Sciences Laboratory (ASL), White Sands Missile Range, New Mexico. The data were obtained by the following methods:

1. Observations

a. Surface

(1) Standard surface observations to include pressure, temperature ($^{\circ}\text{C}$), relative humidity, dew point ($^{\circ}\text{C}$), density (gm/m^3), Wind direction and speed, and cloud cover were made at the D 3 $\frac{1}{2}$ Met Site at T-0 minutes.

(2) Anemometer data were provided from existing pole-mounted and tower-mounted anemometers at LC-33. Monitor of wind speed and direction from one anemometer was also provided in the launch control room.

b. Upper Air

(1) Low level wind data were obtained from RAPTS T-9 pibal observation at:

SITE AND ALTITUDE

D 3 $\frac{1}{2}$ 2km
DENVER 2km

(1) Air structure data (rawinsonde) were collected at the following Met Sites. Data were collected from surface to 69,500 feet in 500-foot increments.

SITE AND TIME

NW30 0830 MST

TABLE 1 Surface Observations taken at 0845 MST,
 08 December 1979, at D 3½, 19308B MLRS,
 Missile No. 1091, Round No. V-96

ELEVATION	3975.	FT/MSL
PRESSURE	887.3	MBS
TEMPERATURE	3.9	°C
RELATIVE HUMIDITY	49	%
DEW POINT	-5.7	°C
DENSITY	1112	GM/M ³
WIND SPEED	02	KTS
WIND DIRECTION	360	DEGREES
CLOUD COVER	2	Ci

STATION ALTITUDE 4010.40 FEET MSL
 8 DEC. 79 0830 HRS MST
 ASCENSION NO. 14

SIGNIFICANT LEVEL DATA
 3420220014
 RW 30

GEODETIC COORDINATES
 32.88497 LAT DEG
 106.49714 LON DEG

TABLE 4

PRESSURE GEOMETRIC ALTITUDE MILLIBARS MSL FELT	TEMPERATURE		REL. HUM. PERCENT
	AIR DEGREES CENTIGRADE	DEWPOINT CENTIGRADE	
297.1	4.5	-5.3	49.0
278.4	3.3	-6.4	49.0
268.4	6.5	-4.0	47.0
250.0	9.1	-2.5	44.0
219.2	8.4	-4.1	41.0
199.4	9.1	-4.4	38.0
170.8	8.1	-5.0	39.0
140.0	3.0	-9.0	39.0
116.3	1.5	-13.4	32.0
123.1	1.0	-7.3	53.0
130.3	-0.6	-14.8	39.0
137.6	-1.5	-11.6	46.0
156.3	-5.0	-17.1	38.0
174.5	-7.6	-20.0	36.0
191.3	-12.6	-25.0	32.0
202.9	-14.1	-27.5	31.0
245.3	-25.1	-37.2	31.0
302.3	-39.2	-49.8	31.0
300.0	-42.2		
326.7	-47.6		
328.4	-51.6		
352.5	-55.5		
368.8	-57.0		
387.0	-58.9		
397.5	-61.6		
449.6	-61.5		
452.7	-62.5		
475.0	-62.3		
486.5	-67.3		
503.1	-64.0		
540.8	-67.4		
57.2	-63.2		
567.5	-63.0		
70.0	-62.4		
612.6			
643.5			
59.0			
680.8			
46.0			
697.8			

UPPER AIR DATA
 3420220014
 1.00 30

STATION ALTITUDE 4010.00 FEET MSL
 8 DEC 79 0530 AMS MST
 ASCENSION 1.00 14

GEODETIC COORDINATES
 32.80497 LAT DEG
 106.44714 LONG DEG

TABLE 5

GEOMETRIC ALTITUDE MSL FEET	PRESSURE MILLIBARS	TEMPERATURE AIR DEGREES	TEMPERATURE DEWPOINT DEGREES	REL. HUM. PERCENT	DENSITY CORRECTED	SPEED OF SOUND KNOTS	SPEED OF WIND DIRECTION DEGREES	WIND SPEED KNOTS	INDEX OF REFRACTION
4010.0	887.1	4.5	-5.3	49.0	1111.1	649.7	325.0	4.1	1.000268
4500.0	871.0	5.7	-4.6	47.5	1096.2	651.1	263.1	1.1	1.000263
5000.0	855.0	6.4	-2.9	44.8	1075.7	654.4	176.0	2.9	1.000259
5500.0	839.4	6.9	-3.0	43.0	1054.7	654.9	106.2	6.2	1.000254
5800.0	824.1	6.5	-3.8	41.5	1037.1	654.5	103.5	6.2	1.000249
6500.0	807.1	8.0	-4.2	39.5	997.6	654.8	105.0	7.8	1.000244
7100.0	794.4	6.9	-4.5	38.2	973.0	655.0	205.0	8.1	1.000239
7500.0	779.9	6.4	-4.8	36.7	962.9	654.4	232.1	9.7	1.000235
8000.0	765.6	7.7	-5.3	39.0	947.6	653.6	239.5	11.1	1.000221
8500.0	751.5	6.8	-6.2	39.0	933.5	652.4	242.7	12.2	1.000227
9000.0	737.6	5.8	-7.1	39.0	919.6	651.2	248.5	10.6	1.000222
9500.0	724.0	4.8	-8.0	39.0	905.9	650.1	254.5	10.0	1.000218
10000.0	710.7	3.8	-8.9	39.0	892.4	648.9	258.4	10.2	1.000214
10500.0	697.5	2.9	-9.8	38.6	878.8	647.8	260.3	11.4	1.000210
11000.0	684.5	2.4	-11.0	36.3	864.1	647.2	261.0	13.1	1.000206
11500.0	671.7	1.9	-12.2	34.1	849.5	646.6	262.6	13.9	1.000201
12000.0	659.2	1.5	-12.7	33.8	835.2	646.0	262.2	14.5	1.000198
12500.0	646.9	.6	-9.6	49.7	821.6	645.2	250.0	14.4	1.000199
13000.0	634.7	-1.5	-12.4	40.0	809.8	643.8	250.1	14.7	1.000192
13500.0	622.7	-1.2	-12.6	43.5	796.4	643.0	244.7	15.4	1.000190
14000.0	610.9	-1.0	-12.2	45.0	783.5	642.1	244.6	15.6	1.000187
14500.0	599.3	-2.9	-13.7	42.9	771.4	640.9	240.2	15.8	1.000183
15000.0	587.9	-3.8	-15.2	40.7	759.5	639.7	250.3	15.7	1.000179
15500.0	576.7	-4.8	-16.7	38.0	747.7	638.6	254.1	15.9	1.000175
16000.0	565.6	-5.8	-17.8	37.5	735.8	637.5	256.7	16.9	1.000172
16500.0	554.7	-6.5	-18.8	36.9	724.0	636.5	253.5	17.6	1.000169
17000.0	544.1	-7.4	-19.8	36.2	712.4	635.4	259.6	18.2	1.000166
17500.0	533.5	-8.5	-21.1	35.3	701.6	634.0	261.5	18.5	1.000162
18000.0	523.1	-9.7	-22.5	34.3	691.3	632.5	263.7	18.7	1.000159
18500.0	512.8	-11.0	-24.0	33.3	681.0	631.0	264.9	18.9	1.000157
19000.0	502.8	-12.2	-25.4	32.3	671.0	629.5	260.0	18.5	1.000154
19500.0	492.9	-13.1	-26.5	31.7	659.9	628.4	267.3	15.3	1.000151
20000.0	483.2	-13.7	-27.1	31.2	648.5	627.6	270.0	12.0	1.000148
20500.0	473.5	-14.7	-28.0	31.0	637.9	626.5	260.9	8.7	1.000146
21000.0	463.9	-15.9	-29.1	31.0	628.1	624.9	256.7	7.5	1.000143
21500.0	454.5	-17.2	-30.2	31.0	618.4	623.4	306.0	8.4	1.000141
22000.0	445.3	-18.5	-31.4	31.0	608.9	621.8	317.3	9.4	1.000138
22500.0	436.3	-19.7	-32.5	31.0	599.6	620.3	324.0	10.5	1.000136
23000.0	427.5	-21.0	-33.6	31.0	590.4	618.7	323.5	10.9	1.000134
23500.0	418.8	-22.3	-34.7	31.0	581.4	617.2	341.6	11.0	1.000131

STATION ALTITUDE 4010.40 FEET MSL
 R. DEC. 79 0830 HRS MST
 ASCENSION NO. 14

UPPER AIR LATⁿ
 3420220914
 RW 30

GEODETIC COORDINATES
 32.88497 LAT DEG
 106.49714 LONG DEG

TABLE 5 (CONT)

GEOMETRIC ALTITUDE MSL FEET	PRESSURE MILLIBARS	TEMPERATURE AIR DEWPOINT DEGREES CENTIGRADE		REL. HUM. PERCENT	DENSITY GM/CM ³	SPEED OF SOUND KNOTS	WIND DATA		INDEX OF REFRACTION
		AIR	DEWPOINT				DIRECTION DEGREES (STAT)	SPEED KNOTS	
24000.0	410.5	-23.5	-35.8	31.0	572.5	615.6	315.1	11.5	1.000129
25000.0	402.0	-24.8	-37.0	31.0	563.8	614.0	309.0	12.1	1.000127
26000.0	393.0	-26.0	-38.1	31.0	554.7	612.5	303.0	12.7	1.000125
27000.0	385.2	-27.5	-39.2	31.0	545.7	610.9	297.3	13.6	1.000123
28000.0	377.0	-28.6	-40.3	31.0	536.8	609.3	292.1	14.8	1.000121
29000.0	369.0	-29.8	-41.4	31.0	528.1	607.8	292.9	15.5	1.000119
27500.0	361.1	-31.1	-42.6	31.0	519.6	606.2	297.0	15.9	1.000117
27000.0	353.4	-32.3	-43.7	31.0	511.2	604.6	301.6	15.5	1.000115
26000.0	345.9	-33.6	-44.8	31.0	502.9	603.0	307.3	14.9	1.000113
25500.0	338.5	-34.8	-45.9	31.0	494.6	601.4	309.1	14.6	1.000111
25000.0	331.5	-36.1	-47.0	31.0	486.9	599.8	310.7	14.3	1.000109
24500.0	324.5	-37.3	-48.2	31.0	479.0	598.2	312.6	14.4	1.000107
24000.0	317.4	-38.5	-49.3	31.0	471.4	596.6	313.5	14.6	1.000105
23500.0	310.5	-40.0	-50.0	23.0**	463.8	594.9	310.1	14.9	1.000104
23000.0	303.6	-41.4	-50.5	8.1**	456.4	593.0	318.5	15.0	1.000102
22500.0	296.9	-42.8			449.1	591.2	320.7	14.7	1.000100
22000.0	290.2	-44.2			441.6	589.4	321.6	14.1	1.000098
21500.0	283.7	-45.6			434.4	587.6	320.7	13.0	1.000097
21000.0	277.5	-47.0			427.2	585.8	319.3	12.5	1.000095
20500.0	271.0	-48.2			419.8	584.2	317.6	12.8	1.000094
20000.0	264.8	-49.3			412.0	582.9	317.4	13.9	1.000092
19500.0	258.7	-50.3			404.4	581.6	317.8	15.6	1.000090
19000.0	252.6	-51.3			397.0	580.2	315.5	15.8	1.000088
18500.0	246.9	-52.4			389.7	578.8	311.7	15.4	1.000087
18000.0	241.2	-53.5			382.5	577.4	301.7	14.0	1.000085
17500.0	235.6	-54.6			375.6	575.9	293.2	13.0	1.000084
17000.0	230.0	-55.6			368.4	574.6	273.4	16.5	1.000082
16500.0	224.6	-56.6			360.3	574.1	264.4	21.3	1.000080
16000.0	219.3	-57.4			352.5	573.5	269.2	25.1	1.000079
15500.0	214.1	-58.8			344.8	573.0	263.5	28.8	1.000077
15000.0	209.1	-59.5			337.6	572.2	272.5	30.2	1.000075
14500.0	204.1	-60.2			330.8	571.1	278.2	31.5	1.000074
14000.0	199.2	-60.9			324.0	570.2	278.4	33.2	1.000072
13500.0	194.4	-61.4			316.6	569.8	278.4	34.8	1.000071
13000.0	189.8	-61.5			309.4	569.5	278.1	35.5	1.000069
12500.0	185.2	-61.7			302.3	569.1	273.7	36.0	1.000067
12000.0	180.7	-61.0			295.4	568.6	274.8	36.1	1.000066
11500.0	176.4	-60.3			288.7	568.4	274.2	36.1	1.000064
11000.0	172.2	-60.5			282.1	568.1	274.2	36.3	1.000063
10500.0	168.0	-60.5			275.6	567.7	273.9	36.0	1.000061

** AT LEAST ONE ASSUMED RELATIVE HUMIDITY VALUE WAS USED IN THE INTERPOLATION.

STATION ALTITUDE 4010.00 FEET MSL
 8 Dec. 79 0830 HRS MST
 ASCENSION NO. 14

UPPER AIR DATA
 3420220014
 PG 30

GEODETIC COORDINATES
 32.88497 LAT DEG
 106.49714 LON DEG

TABLE 5 (CONT)

GEOMETRIC ALTITUDE MSL FEET	PRESSURE MILLIBARS	TEMPERATURE AIR DEGREES	REL. HUM. PERCENT	DENSITY GM/CUBIC METER	SPEED OF SOUND M/CTS	WIND DATA		INDEX OF REFRACTION
						DIRECTION DEGREES(T)	SPEED KNOTS	
44500.0	164.0	-61.1		269.4	567.3	273.5	35.0	1.000060
44500.0	160.0	-61.3		263.2	567.0	273.1	35.6	1.000059
44500.0	156.2	-61.6		257.2	566.6	272.9	32.0	1.000057
44500.0	152.4	-61.5		250.9	566.7	272.5	31.7	1.000056
44500.0	148.7	-61.5		244.8	566.8	272.0	32.5	1.000055
44500.0	145.1	-61.5		238.4	566.6	270.6	31.4	1.000053
47500.0	141.6	-61.5		233.1	566.8	267.9	28.6	1.000052
47500.0	138.2	-61.5		227.5	566.8	265.6	26.2	1.000051
48000.0	134.9	-61.9		222.4	566.3	263.0	24.5	1.000050
48500.0	131.6	-62.4		217.5	565.6	263.9	23.3	1.000048
49000.0	128.4	-62.5		212.3	565.5	262.6	23.2	1.000047
49500.0	125.3	-62.4		207.1	565.6	260.4	22.8	1.000046
50000.0	122.3	-62.3		202.0	565.6	258.9	21.4	1.000045
50500.0	119.3	-62.6		197.3	565.4	257.9	20.8	1.000044
51000.0	116.4	-63.2		193.1	564.5	250.4	21.8	1.000043
51500.0	113.5	-63.9		188.9	563.6	249.6	22.6	1.000042
52000.0	110.7	-64.5		184.9	562.7	250.4	23.0	1.000041
52500.0	108.0	-65.2		180.9	561.8	251.2	23.2	1.000040
53000.0	105.3	-65.9		177.1	560.8	252.2	22.2	1.000039
53500.0	102.8	-66.5		173.3	559.9	253.4	21.2	1.000039
54000.0	100.2	-67.2		169.6	559.0	252.1	20.2	1.000038
54500.0	97.8	-68.3		165.0	559.7	250.5	19.2	1.000037
55000.0	95.4	-68.2		160.3	560.5	250.3	18.3	1.000036
55500.0	93.0	-65.5		156.1	561.3	250.2	17.5	1.000035
56000.0	90.7	-65.0		151.8	562.1	249.4	16.4	1.000034
56500.0	88.3	-64.4		147.6	562.9	248.1	15.1	1.000033
57000.0	86.3	-64.2		143.9	563.2	248.9	14.5	1.000032
57500.0	84.2	-64.5		140.6	562.7	251.2	14.2	1.000031
58000.0	82.1	-64.9		137.4	562.2	257.5	13.8	1.000031
58500.0	80.1	-63.3		134.3	561.6	271.1	13.6	1.000030
59000.0	78.1	-65.7		131.2	561.1	284.1	14.0	1.000029
59500.0	76.2	-66.1		128.2	559.6	293.7	13.2	1.000029
60000.0	74.3	-65.5		125.3	559.1	310.3	13.0	1.000028
60500.0	72.3	-66.9		122.4	559.5	310.9	11.2	1.000027
61000.0	70.7	-67.2		119.6	559.0	308.1	9.0	1.000027
61500.0	69.0	-67.0		116.5	559.4	293.8	6.8	1.000026
62000.0	67.3	-65.2		113.3	560.4	284.6	5.6	1.000025
62500.0	65.6	-63.5		110.1	561.4	253.3	6.8	1.000025
63000.0	64.0	-64.7		107.0	562.4	214.7	8.4	1.000024
63500.0	62.4	-64.9		104.0	563.4	202.9	10.6	1.000023

STATION ALTITUDE 4010.00 FEET MSL
 8 DEC. 79 0830 HRS MST
 ASCENSION NO. 14

UPPER AIR DATA
 3420220014
 NW 30

GEODETIC COORDINATES
 32.88497 LAT DEG
 106.49714 LON DEG

TABLE 5 (CONT)

GEOMETRIC ALTITUDE MSL FEET	PRESSURE MILLIBARS	TEMPERATURE AIR DEGREES CENTIGRADE	REL. HUM. PERCENT	DENSITY GM/CUBIC METER	SPEED OF SOUND KNOTS	DIRECTION DEGREES (TN)	WIND DATA		INDEX OF REFRACTION
							SPEED KNOTS	REFRACTION	
4400.0	164.0	-61.1	269.4	567.3	273.5	35.0	1.000060		
4450.0	160.0	-61.3	263.2	567.0	273.1	33.6	1.000059		
4500.0	156.2	-61.6	257.2	566.6	272.9	32.0	1.000057		
4550.0	152.4	-61.5	250.9	566.7	272.5	31.7	1.000056		
4600.0	148.7	-61.5	244.8	566.8	272.0	32.5	1.000055		
4650.0	145.1	-61.5	238.9	566.8	270.6	31.4	1.000053		
4700.0	141.6	-61.5	233.1	566.8	267.9	28.6	1.000052		
4750.0	138.2	-61.5	227.5	566.8	265.6	26.2	1.000051		
4800.0	134.9	-61.9	222.4	566.3	263.0	24.5	1.000050		
4850.0	131.6	-62.4	217.5	565.6	263.9	23.3	1.000048		
4900.0	128.4	-62.5	212.3	565.5	262.6	23.2	1.000047		
4950.0	125.3	-62.4	207.1	565.6	260.4	22.8	1.000046		
5000.0	122.3	-62.3	202.0	565.6	255.9	21.4	1.000045		
5050.0	119.3	-62.6	197.3	565.4	251.9	20.8	1.000044		
5100.0	116.4	-63.2	193.1	564.5	250.4	21.8	1.000043		
5150.0	113.5	-63.9	188.9	563.6	249.6	22.6	1.000042		
5200.0	110.7	-64.6	184.9	562.7	250.4	23.0	1.000041		
5250.0	108.0	-65.2	180.9	561.8	251.2	23.2	1.000040		
5300.0	105.3	-65.9	177.1	560.8	252.2	22.2	1.000039		
5350.0	102.8	-66.5	173.3	559.9	253.4	21.2	1.000039		
5400.0	100.2	-67.2	169.6	559.0	252.1	20.2	1.000038		
5450.0	97.8	-68.0	165.0	559.7	250.5	19.2	1.000037		
5500.0	95.4	-68.2	160.5	560.5	251.3	18.3	1.000036		
5550.0	93.0	-68.6	156.1	561.3	250.2	17.5	1.000035		
5600.0	90.7	-69.0	151.8	562.1	249.4	16.4	1.000034		
5650.0	88.5	-69.4	147.6	562.9	248.1	15.1	1.000033		
5700.0	86.3	-69.2	143.9	563.2	248.9	14.5	1.000032		
5750.0	84.2	-69.5	140.6	562.7	251.2	14.2	1.000031		
5800.0	82.1	-69.9	137.4	562.2	257.5	13.8	1.000031		
5850.0	80.1	-69.3	134.3	561.6	271.1	13.6	1.000030		
5900.0	78.1	-68.7	131.2	561.1	284.1	14.0	1.000029		
5950.0	76.2	-68.1	128.2	560.6	293.7	13.2	1.000029		
6000.0	74.3	-68.5	125.3	560.1	310.3	13.0	1.000028		
6050.0	72.5	-68.9	122.4	559.5	310.9	11.2	1.000027		
6100.0	70.7	-67.2	119.6	559.0	308.1	9.0	1.000027		
6150.0	69.0	-67.0	116.5	559.4	293.8	6.8	1.000026		
6200.0	67.3	-66.2	113.3	560.4	264.6	5.6	1.000025		
6250.0	65.6	-65.5	110.1	561.4	233.3	6.8	1.000025		
6300.0	64.0	-64.7	107.0	562.4	214.7	8.4	1.000024		
6350.0	62.4	-64.0	104.0	563.4	202.9	10.6	1.000023		

STATION ALTITUDE 401.00 FEET ASL
 3420220014
 34.00497 LAT N
 118.49714 LONG W

UPPER AIR DATA
 3420220014
 11 30

TABLE 5 (CONT)

GEOMETRIC ALTITUDE FEET	PRESSURE MILLIBARS	TEMPERATURE AIR DEGREES CENTIGRADE	RELATIVE HUMIDITY PERCENT	DENSITY GRAMS PER CUBIC METER	SPEED OF SOUND KIPTS	WIND DATA DIRECTION, SPEED, VELOCITY KNOTS	INDEX OF REFRACTION
00000.0	50.8	-53.5		101.1	504.4	292.8	1.000023
00500.0	59.4	-63.2		98.6	504.5	293.7	1.000022
01000.0	58.9	-63.1		96.2	504.8	219.1	1.000021
01500.0	58.5	-63.1		93.8	504.6	252.4	1.000021
02000.0	58.2	-63.1		91.5	504.6	275.3	1.000020
02500.0	58.4	-63.1		89.3	504.7	290.7	1.000020
03000.0	58.7	-63.1		87.1	504.7	279.5	1.000019
03500.0	51.0	-63.0		85.0	504.7		1.000019
04000.0	50.7	-63.0		82.9	504.8		1.000018
04500.0	47.3	-62.8		80.8	505.0		1.000018
05000.0	47.5	-62.7		78.8	505.2		1.000018
05500.0	46.5	-62.5		76.8	505.5		1.000017

STATION ALTITUDE 4010.40 FEET MSL
 8 JUL 79 0830 HRS MST
 ASCENSION 14. 14

MANDATORY LEVELS
 342022Z014
 14 30

GEODETIC COORDINATES
 32.88497 LAT DEG
 106.49714 LONG DEG

TABLE 6

PRESSURE GEOPOTENTIAL		TEMPERATURE		REL. HUM.	WIND DATA	
MILLIBARS	FEET	AIR DEGREES	DEWPOINT DEGREE	PERCENT	DIRECTION DEGREES(TN)	SPEED KNOTS
850.0	5157.	9.1	-2.5	44.	171.2	3.9
800.0	6022.	9.1	-4.4	38.	197.8	7.9
750.0	8550.	6.7	-6.3	39.	243.3	12.0
700.0	10376.	3.0	-9.0	39.	260.2	11.0
650.0	12359.	.9	-7.0	52.	257.7	14.4
600.0	14455.	-2.8	-13.0	43.	240.0	15.8
550.0	16791.	-6.9	-19.2	37.	259.0	17.9
500.0	19117.	-12.6	-25.3	32.	288.3	17.6
450.0	21753.	-17.8	-30.8	31.	313.8	8.9
400.0	24523.	-25.1	-37.2	31.	307.6	12.2
350.0	27717.	-32.0	-44.2	31.	304.5	15.2
300.0	31209.	-42.2			319.8	14.8
250.0	35164.	-51.8			313.8	15.6
200.0	39825.	-58.9			276.3	32.9
175.0	42565.	-60.4			274.2	36.2
150.0	45709.	-61.5			272.2	32.2
125.0	49408.	-62.4			260.2	22.7
100.0	53374.	-67.3			252.6	20.1
50.0	58542.	-65.3			271.2	13.6
70.0	60926.	-67.4			306.7	6.2
60.0	64377.	-63.2			205.3	9.2
50.0	67758.	-63.0				

** AT LEAST ONE ASSURED RELATIVE HUMIDITY VALUE WAS USED IN THE INTERPOLATION.