

AD-A086 590

HARRY DIAMOND LABS ADELPHI MD
TRANSMISSION FACTOR EFFECTS ON THE AVERAGE FORWARD RANGE OF COM--ETC(11)
JAN 80 W T WYATT

F/8 20/10
COM--ETC(11)

UNCLASSIFIED

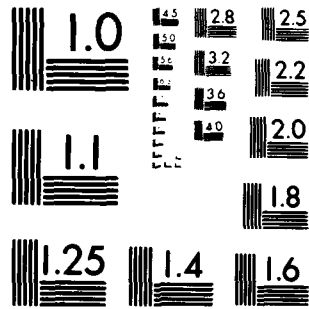
HDL-TM-80-10

NL

4 OF 1
HDL
D016-000

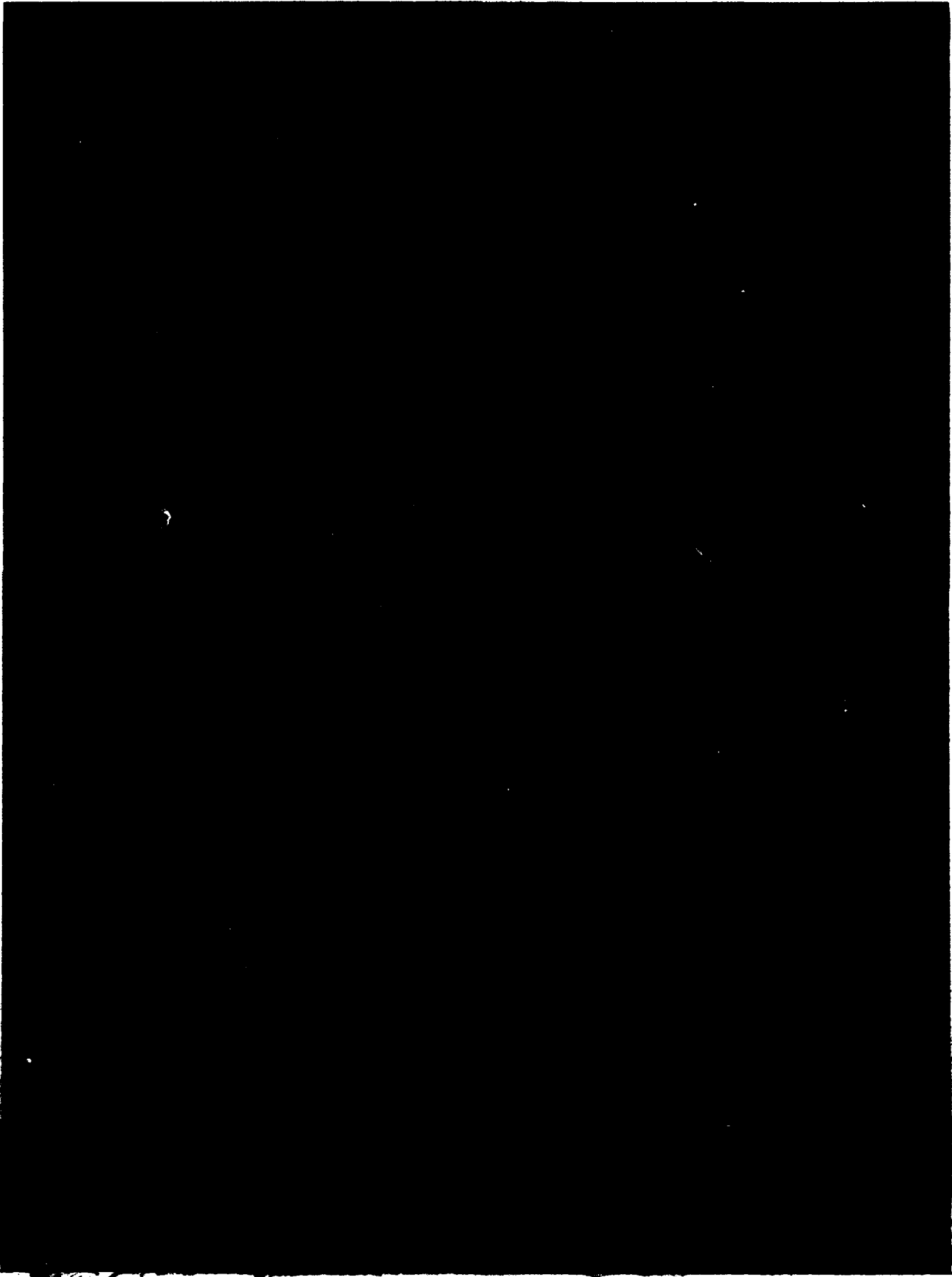


END
DATE
FILMED
8-80
DTIC



MICROCOPY RESOLUTION TEST CHART
NATIONAL BUREAU OF STANDARDS-1963-A

ADA 086590



UNCLASSIFIED

SECURITY CLASSIFICATION OF THIS PAGE (When Data Entered)

REPORT DOCUMENTATION PAGE		READ INSTRUCTIONS BEFORE COMPLETING FORM
1. REPORT NUMBER HDL-TM-80-10	2. GOVT ACCESSION NO. AD-A086590	3. RECIPIENT'S CATALOG NUMBER 7
4. TITLE (and Subtitle) Transmission Factor Effects on the Average Forward Range of Compton Electrons.	5. TYPE OF REPORT & PERIOD COVERED Technical Memorandum	
7. AUTHOR(s) William T. Wyatt, Jr	8. CONTRACT OR GRANT NUMBER(s)	
9. PERFORMING ORGANIZATION NAME AND ADDRESS Harry Diamond Laboratories 2800 Powder Mill Road Adelphi, MD 20783	10. PROGRAM ELEMENT, PROJECT, TASK AREA & WORK UNIT NUMBERS Program Ele: 6.21.20.A	
11. CONTROLLING OFFICE NAME AND ADDRESS US Army Materiel Development & Readiness Command Alexandria, VA 22333	12. REPORT DATE Jan 1980	13. NUMBER OF PAGES 12
14. MONITORING AGENCY NAME & ADDRESS (if different from Controlling Office)	15. SECURITY CLASS. (of this report) UNCLASSIFIED	
16. DISTRIBUTION STATEMENT (of this Report) Approved for public release; distribution unlimited.		
17. DISTRIBUTION STATEMENT (of the abstract entered in Block 20, if different from Report)		
18. SUPPLEMENTARY NOTES DRCMS Code: 612120.H.250011 HDL Project: X759E6		
19. KEY WORDS (Continue on reverse side if necessary and identify by block number) Compton electrons EMP		
20. ABSTRACT (Continue on reverse side if necessary and identify by block number) Compton electrons generated in air by gamma rays produced by nuclear explosions are known to cause transient electromagnetic fields called the electromagnetic pulse (EMP) or radioflash. The average forward range of the Compton electrons in air is a principal factor governing the strength of the EMP. Previous estimates of the average forward range of Compton electrons were based on an energy-independent electron transmission factor. This		

DD FORM 1 JAN 79 1473 EDITION OF 1 NOV 65 IS OBSOLETE

1

UNCLASSIFIED
SECURITY CLASSIFICATION OF THIS PAGE (When Data Entered)

163050

mt

UNCLASSIFIED

SECURITY CLASSIFICATION OF THIS PAGE(When Data Entered)

20. Abstract (Cont'd)

investigation uses an energy-independent electron transmission factor to obtain more accurate results. Results from the two methods are in agreement for an incident gamma energy of 1.5 MeV, and disagree by 7 and 10 percent for incident gamma energies of 0.3 and 10.0 MeV, respectively. Simple numerical fits to the new results are included.

UNCLASSIFIED

2

SECURITY CLASSIFICATION OF THIS PAGE(When Data Entered)

CONTENTS

	<u>Page</u>
1. INTRODUCTION	5
2. METHOD OF CALCULATION	5
3. RESULTS OF CALCULATION	6
4. CONCLUSIONS	9
DISTRIBUTION	11

TABLES

1. Average Electron Range \bar{R} as a Fraction of Extrapolated Range R_{ex} , using Ebert's Formula ...	6
2. Computed Results using Electron Extrapolated Range	7
3. Computed Results using Electron CSDA Range.....	8

Accession For	
NTIS GRA&I	<input checked="" type="checkbox"/>
DDC TAB	<input type="checkbox"/>
Unannounced	<input type="checkbox"/>
Justification	
By _____	
Distribution/	
Availability Codes	
Dist	Avail and/or special
A	

1. INTRODUCTION

Compton electrons generated in the air by gamma rays produced by nuclear explosions are known to cause transient electromagnetic fields called the electromagnetic pulse (EMP) or radio-flash. The average forward range of the Compton electrons in the air is a principal factor governing the strength of the EMP caused by bursts in the lower atmosphere within about 10 km of the earth's surface. For bursts at high altitudes, a different treatment of the trajectory of the Compton electrons is necessary.

For low-altitude bursts, previous estimates¹ of the average forward range of Compton electrons produced by collimated monochromatic gamma rays were based on the use of an energy-independent electron transmission factor for the Compton electrons. The transmission factor represents the cumulative effect of small- and large-angle scattering of the electrons, causing the electrons to straggle. Use of an energy-independent transmission factor neglects both the true average Compton recoil energy and the recoil energy dependence upon the scattering angle.

In this investigation, the average forward range is computed using an energy-dependent transmission factor in connection with the Compton angular scattering distribution. This is done for a range of gamma ray energies from 0.3 to 10 MeV. Simple numerical fits to the results are included.

2. METHOD OF CALCULATION

The well-known Klein-Nishina differential scattering cross section for Compton scattering is

$$d(\sigma_e) = 2\pi \sin \theta \, d\theta \, r_0^2 \left[\frac{1}{1+\alpha(1-\cos \theta)} \right]^2 \cdot \left(\frac{1+\cos^2 \theta}{2} \right) \left(1 + \frac{\alpha^2(1-\cos \theta)^2}{(1+\cos^2 \theta)[1+\alpha(1-\cos \theta)]} \right)$$

per electron,

¹John S. Malik, *The Compton Current*, Los Alamos Scientific Laboratory, Defense Atomic Support Agency, 1882-1 (5 November 1965).

where

- θ = gamma scattering angle,
- α = gamma energy in units of 0.511 MeV, and
- r_0 = classical electron radius.

The electron recoil angle ϕ is given by

$$\cot \phi = (1+\alpha) \tan (\theta/2)$$

The scattered gamma energy E' is

$$E' = E_\gamma [1 + \alpha(1 - \cos \theta)]$$

where $E_\gamma = 0.511\alpha$ is the incident gamma energy (in MeV). The electron recoil energy E is

$$E = E_\gamma - E'$$

The range of the Compton electron is commonly given in two alternative forms: (1) the practical or extrapolated range or (2) the maximum or CSDA range (i.e., continuous slowing down approximation). The former is obtained from experiments and the latter from slowing-down theory. The extrapolated range is commonly estimated to be about 0.8 of the maximum range. The difference is attributed to multiple scattering of the electrons. Results were obtained in this investigation for an example of each form for electrons in air of density ρ :

- (1) $\rho R_{ex} = 0.368EA$, $A = 1.26 - 0.064 \ln E$ (cm),
- (2) $\rho R_0 = 0.61E^2/(E+0.26)$ (cm),

where the first formula is a frequently used approximation and where the latter formula is due to Longmire as cited by Malik.¹ As suggested,

$$R_{ex} \approx 0.8 R_0$$

The electron transmission factor (also called "transmitted number fraction") has been measured by Ebert et al.,² who suggested the following expression for the transmission factor $T(x)$:

¹P. J. Ebert, A. F. Lawson, and E. M. Lent, *Lawrence Radiation Laboratory, UCR-71462* (December 1968), as cited by J. A. Lonergan and D. C. Shreve, *Parametric Fit to Electron Transport Properties, Proceedings of the National Symposium on Natural and Manmade Radiation in Space*, E. A. Worman, ed., National Aeronautics and Space Administration, TM X-3440 (January 1972).

$$T(x) = \exp[-A(x/R_{ex})^B] ,$$

where

$$A = (1-1/B)^{1-B} ,$$

$$B = \left[\frac{387 E}{Z(1+7.5 \times 10^{-5} Z E^2)} \right]^{1/4} , \text{ and}$$

Z = the atomic number (7.2 for air).

The following integrals define Compton total cross section (σ_e), average Compton recoil energy (\bar{E}), average forward direction cosine of the Compton electron ($\overline{\cos \phi}$), and Compton electron average forward range (\bar{R}):

$$\sigma_e = \int_{\theta=0}^{\theta=\pi} d(\sigma_e) ,$$

$$\bar{E} = \frac{1}{\sigma_e} \int_{\theta=0}^{\theta=\pi} E d(\sigma_e) ,$$

$$\overline{\cos \phi} = \frac{1}{\sigma_e} \int_{\theta=0}^{\theta=\pi} \cos \phi d(\sigma_e) ,$$

$$\bar{R} = \frac{1}{\sigma_e} \int_{\theta=0}^{\theta=\pi} \hat{R}(E) \cos \phi d(\sigma_e) .$$

The average electron range \hat{R} is

$$\hat{R}(E) = -R_{ex} \int_{x=0}^{\infty} x \frac{dT(x)}{dx} dx ,$$

which, using the Ebert form for $T(x)$, is easily found to be

$$\hat{R}(E) = R_{ex} a^2 \Gamma(2-a) ,$$

where

$$a = 1-1/B .$$

The ratio \hat{R}/R_{ex} is tabulated for a few values of electron energy E in table 1. Energy-

TABLE 1. AVERAGE ELECTRON RANGE \hat{R} AS A FRACTION OF EXTRAPOLATED RANGE R_{ex} , USING EBERT'S FORMULA

Electron energy E (MeV)	Ratio \hat{R}/R_{ex}
0.03	0.7488
0.1	0.6243
0.5	0.6404
1.0	0.6650
1.5	0.6812
2.0	0.6932
2.5	0.7027
3.0	0.7104
3.5	0.7170
5.0	0.7320
7.0	0.7458
10.0	0.7597

independent values of 2/3 and 0.63 have been used previously as cited by Malik.¹

It will be convenient to express the Compton electron average forward range R for a gamma energy E_γ as

$$\bar{R} = \zeta(E_\gamma) R_{ex} \overline{(\bar{E}) \overline{\cos \phi}} ,$$

where the extrapolated range R_{ex} is determined from the average Compton electron energy \bar{E} , the Compton electron average forward direction cosine $\overline{\cos \phi}$ is determined from the gamma energy, and the factor ζ is determined from the gamma energy. Once \bar{R} , \bar{E} , and $\overline{\cos \phi}$ are known, ζ is readily found.

3. RESULTS OF CALCULATION

The integrals for σ_e , \bar{E} , $\overline{\cos \phi}$, and \bar{R} were integrated numerically for a range of gamma ray energies from 0.01 to 10.0 MeV. This was done both for the extrapolated range R_{ex} and the esti-

¹John S. Malik. *The Compton Current*. Los Alamos Scientific Laboratory, Defense Atomic Support Agency, 1882. (5 November 1965).

mated extrapolated range $0.8R_0$, since expressions for R_{ex} and $0.8R_0$ yield somewhat different values. Results are shown in table 2 for R_{ex} and in table 3 for $0.8R_0$. In addition to \bar{E} , $\cos\phi$, and \bar{R} , the results include the factor ζ , and also the value for \bar{R} that is obtained if an energy-independent ratio $\bar{R}/R_{ex} = 2/3$ is used.

Comparison of \bar{R} with $\bar{R}(\bar{R}/R_{ex} = 2/3)$ shows the effect of neglecting the energy dependence of the transmission factor. The difference is negligible for a gamma energy of 1.5 MeV, and increases the more the energy level differs from 1.5 MeV. For example, the difference is 7 percent for gamma energies of 0.3 MeV, 5 percent for 0.7

MeV, 5 percent for 3.5 MeV, and 10 percent for 7 MeV. The value for $\bar{R}(\bar{R}/R_{ex} = 2/3)$ is too low at higher gamma energies and at very low gamma energies. This is understandable since (1) at high gamma energies most recoil electrons are scattered nearly forward with energies so high that $\bar{R}/R_{ex} = 2/3$ is an underestimate, and (2) at very low gamma energies for which Compton recoil energies approach 0.02 MeV, the Ebert formula for the transmission factor begins to fail (predicting an increase in \bar{R}/R_{ex} to a value of 0.749 at $E = 0.03$ MeV, for example). The failure in the Ebert formula is due to the quantity $1/B$ approaching and exceeding unity. For this reason, the computation cannot reasonably be applied to gamma energies less than about 0.3 MeV.

TABLE 2. COMPUTED RESULTS USING ELECTRON EXTRAPOLATED RANGE^a

E_γ (MeV)	ζ_{ex}	E (MeV)	ρR_{ex} (g/cm ²)	$\cos \phi$	ρR (g/cm ²)	ρR for $\bar{R}/R_{ex} = 2/3$ (g/cm ²)
0.01	2.181	0.188(-3)	0.666(-7)	0.656	0.953(-7)	0.635(-7)
0.1	1.461	0.0138	0.516(-3)	0.654	0.492(-3)	0.383(-3)
0.15	1.137	0.0272	0.171(-2)	0.658	0.128(-2)	0.122(-2)
0.2	1.025	0.0433	0.374(-2)	0.663	0.255(-2)	0.261(-2)
0.3	0.937	0.0809	0.0103	0.677	0.655(-2)	0.699(-2)
0.4	0.897	0.124	0.0200	0.692	0.0124	0.0133
0.5	0.873	0.171	0.0325	0.707	0.0200	0.0214
0.6	0.857	0.221	0.0473	0.721	0.0292	0.0309
0.7	0.844	0.273	0.0643	0.733	0.0398	0.0418
0.8	0.834	0.327	0.0831	0.745	0.0516	0.0539
1.0	0.820	0.440	0.125	0.766	0.0787	0.0811
1.5	0.799	0.742	0.251	0.807	0.162	0.162
2.0	0.787	1.062	0.397	0.835	0.261	0.257
2.5	0.781	1.393	0.555	0.856	0.371	0.360
3.0	0.777	1.732	0.721	0.872	0.489	0.468
3.5	0.775	2.077	0.893	0.885	0.612	0.580
5.0	0.771	3.140	1.431	0.911	1.005	0.931
7.0	0.771	4.597	2.167	0.931	1.556	1.412
10.0	0.773	6.836	3.273	0.948	2.399	2.133

^aSymbols are defined as follows.

- E_γ = gamma energy
- ζ_{ex} = correction factor obtained for $\rho R = \zeta_{ex}\rho R_{ex}(E) \cos \phi$
- E = average recoil electron energy
- ρR_{ex} = extrapolated range for electron energy E, air density ρ
- $\cos \phi$ = Compton electron forward direction cosine
- ρR = Compton electron average forward range for transmission factor T(E), air density ρ

It is emphasized that these results for the average forward range of Compton electrons are valid only for incident collimated monochromatic gamma rays undergoing a first scatter. Subsequent scatters would occur at lower gamma energies and in different directions than for the first scatter. However, accurate Compton electron current scores could be obtained from multiple-scatter gamma transport calculations if the Compton electron average forward range presented here were used to score each Compton scatter.

The expression

$$\bar{R} = \zeta(E_\gamma)R_{ex}(\bar{E})\overline{\cos \phi}$$

uses the fit to the extrapolated range $R_{ex}(E)$ in air for the average Compton recoil energy \bar{E} ; in this expression, the factor $\zeta(E_\gamma)$, a function of the incident gamma energy E_γ (in MeV), is approximated to within ± 0.003 on the interval $0.3 \text{ MeV} \leq E_\gamma \leq 10 \text{ MeV}$ by

$$\zeta_{ex} \approx 1.22/(1+1.2065x-0.626x^2)$$

where

$$x = E_\gamma/(E_\gamma+0.7)$$

When the extrapolated range is estimated as $0.8R_0(E_\gamma)$ where R_0 is Longmire's fit to the CSDA range, the factor ζ is approximated to within ± 0.003 on the same interval by

TABLE 3. COMPUTED RESULTS USING ELECTRON CSDA RANGE^a

E_γ (MeV)	ζ_0	\bar{E} (MeV)	$0.8\rho R_0$ (g/cm ²)	$\overline{\cos \phi}$	$\rho\bar{R}$ (g/cm ²)	$\rho\bar{R}$ for $R/R_{ex} = 2/3$ (g/cm ²)
0.01	1.877	0.188(-3)	0.660(-7)	0.656	0.813(-7)	0.542(-7)
0.1	1.569	0.0138	0.339(-3)	0.654	0.348(-3)	0.272(-3)
0.15	1.234	0.0272	0.126(-2)	0.658	0.102(-2)	0.984(-3)
0.2	1.112	0.0433	0.301(-2)	0.663	0.222(-2)	0.229(-2)
0.3	1.000	0.0809	0.937(-2)	0.677	0.635(-2)	0.678(-2)
0.4	0.940	0.124	0.0195	0.692	0.0127	0.0136
0.5	0.900	0.171	0.330	0.707	0.0210	0.0224
0.6	0.872	0.221	0.494	0.721	0.0310	0.0328
0.7	0.851	0.273	0.0681	0.733	0.0425	0.0447
0.8	0.835	0.327	0.0889	0.745	0.0553	0.0577
1.0	0.813	0.440	0.135	0.766	0.0841	0.0866
1.5	0.786	0.742	0.268	0.807	0.170	0.171
2.0	0.775	1.062	0.416	0.835	0.269	0.265
2.5	0.770	1.393	0.573	0.856	0.378	0.366
3.0	0.768	1.732	0.735	0.872	0.492	0.471
3.5	0.767	2.077	0.901	0.885	0.612	0.580
5.0	0.769	3.140	1.415	0.911	0.991	0.918
7.0	0.773	4.597	2.123	0.931	1.528	1.387
10.0	0.779	6.836	3.214	0.948	2.375	2.111

^aSymbols are defined as follows.

- E_γ = gamma energy
- ζ_0 = correction factor obtained for $0.8\rho\bar{R} = \zeta_0 0.8\rho R_0(E)\overline{\cos \phi}$
- \bar{E} = average recoil electron energy
- $0.8\rho R_0$ = estimated extrapolated range from CSDA range R_0 for electron energy E , air density ρ
- $\overline{\cos \phi}$ = Compton electron average forward direction cosine
- $\rho\bar{R}$ = Compton electron average forward range for transmission factor $T(E)$, air density ρ

$$\zeta_0 \approx 1.7664/(1+3.0899x-1.8462x^2) ,$$

where x is defined as before.

The average forward direction cosine $\cos \phi$ is approximated to four significant figures on the interval $0.1 \text{ MeV} < E_\gamma \leq 10 \text{ MeV}$ by

$$\cos \phi \approx \frac{0.660362 - 0.089254\mu + 0.098517\mu^2}{1.0 - 0.183651\mu + 0.105445\mu^2} ,$$

where

$$\mu = \ln[0.5 + 3.7 E_\gamma^2 / (E_\gamma + 0.05)] .$$

The average recoil energy \bar{E} is exactly calculable as

$$\bar{E} = E_\gamma \sigma_e^{(a)} / \sigma_e ,$$

where $\sigma_e^{(a)}$ is the Klein-Nishina Compton absorption cross section.

4. CONCLUSIONS

In this investigation, an energy-dependent electron transmission factor has been used to evaluate more accurately the Compton electron average forward range, for incident gamma energies from 0.3 to 10.0 MeV. The results were compared with a popular previous approximation using an energy-independent electron transmission factor. The previous approximation shows in comparison essentially no error for a gamma energy of 1.5 MeV, 7 percent error for 0.3 MeV, and 10 percent error for 10.0 MeV.

For a typical gamma spectrum hardened to an average energy of about 3.5 MeV by atmospheric attenuation of lower energies, the previous approximation would give Compton currents 5 percent smaller and electric fields perhaps 10 percent smaller than for the more accurate treatment presented here. Although the differences are small, the more accurate estimate of average forward range presented here could be incorporated into EMP environment prediction codes at virtually no cost. Simple numerical fits to relevant parameters are given.

DISTRIBUTION

DIRECTOR
 DEFENSE ADVANCED RESEARCH PROJECTS AGENCY
 1400 WILSON BLVD
 ARLINGTON, VA 22209
 ATTN TIO

DEFENSE DOCUMENTATION CENTER
 CAMERON STATION
 ALEXANDRIA, VA 22314
 ATTN DDC-TCA (12 COPIES)

COMMANDER
 US ARMY RSCH & STD GP (EUR)
 ATTN LTC JAMES M. KENNEDY, JR.
 CHIEF, PHYSICS & MATH BRANCH
 FPO NEW YORK 09510

COMMANDER
 US ARMY MATERIEL DEVELOPMENT &
 READINESS COMMAND
 ATTN DRXAM-TL HQ TECH LIBRARY
 5001 EISENHOWER AVENUE
 ALEXANDRIA, VA 22333

COMMANDER
 US ARMY ARMAMENT MATERIEL
 READINESS COMMAND
 ATTN DRSAR-LEP-L, TECHNICAL LIBRARY
 ROCK ISLAND, IL 61299

COMMANDER
 US ARMY MISSILE & MUNITIONS
 CENTER & SCHOOL
 ATTN ATSK-CTD-F
 REDSTONE ARSENAL, AL 35809

DIRECTOR
 US ARMY MATERIEL SYSTEMS ANALYSIS
 ACTIVITY
 ATTN DRXSY-MP
 ABERDEEN PROVING GROUND, MD 21005

DIRECTOR
 US ARMY BALLISTIC RESEARCH LABORATORY
 ATTN DRDAR-TSB-S (STINFO)
 ABERDEEN PROVING GOUND, MD 21005

TELEDYNE BROWN ENGINEERING
 CUMMINGS RESEARCH PARK
 ATTN DR. MELVIN L. PRICE, MS-44
 HUNTSVILLE, AL 35807

ENGINEERING SOCIETIES LIBRARY
 345 EAST 47TH STREET
 ATTN ACQUISITIONS DEPARTMENT
 NEW YORK, NY 10017

US ARMY ELECTRONICS TECHNOLOGY
 & DEVICES LABORATORY
 ATTN DELET-DD
 FORT MONMOUTH, NJ 07703

DIRECTOR
 DEFENSE NUCLEAR AGENCY
 WASHINGTON, DC 20305
 ATTN TITL
 ATTN RAEV (G.BAKER)
 ATTN DDST

US ARMY NUCLEAR & CHEMICAL AGENCY
 7500 BACKLICK ROAD
 BUILDING 2073
 SPRINGFIELD, VA 22150
 ATTN DR. J. BERBERET

AIR FORCE WEAPONS LABORATORY, AFSC
 KIRTLAND AFB, NM 87117
 ATTN EL, C. BAUM
 ATTN ELT, W. PAGE

DIKEWOOD INDUSTRIES, INC.
 1009 BRADBURY DRIVE, SE
 ALBUQUERQUE, NM 87106
 ATTN C. JONES

GENERAL ELECTRIC CO.-TEMPO
 816 STATE STREET
 P O DRAWER QQ
 SANTA BARBARA, CA 93102
 ATTN DASIAC

JAYCOR
 P O BOX 2008
 SANTA BARBARA, CA 93120
 ATTN W. RADASKY

LAWRENCE LIVERMORE LABORATORY
 P O BOX 808
 LIVERMORE, CA 94550
 ATTN DOC CON FOR TECHNICAL INFORMATION
 DEPT. LIBRARY
 ATTN DOC CON FOR L-94 H KRUGER

DISTRIBUTION (Cont'd)

LOS ALAMOS SCIENTIFIC LABORATORY
P O BOX 1663
LOS ALAMOS, NM 87545
ATTN DOC CON FOR J MALIK

MISSION RESEARCH CORP.
P O DRAWER 719
SANTA BARBARA, CA 93102
ATTN EMP GROUP

R & D ASSOCIATES
1401 WILSON BLVD
SUITE 500
ARLINGTON, VA 22209
ATTN J. BOMBARDT

SCIENCE APPLICATIONS, INC.
P O BOX 2351
LA JOLLA, CA 92038
ATTN R. PARKINSON

US ARMY ELECTRONICS RESEARCH
& DEVELOPMENT COMMAND
ATTN TECHNICAL DIRECTOR, DRDEL-CT

HARRY DIAMOND LABORATORIES
ATTN 00100, COMMANDER/TECH DIR/TSO
ATTN CHIEF, DIV 10000
ATTN CHIEF, DIV 20000
ATTN CHIEF, DIV 30000
ATTN CHIEF, DIV 40000
ATTN RECORD COPY, 81200
ATTN HDL LIBRARY, 81100 (3 COPIES)
ATTN HDL LIBRARY, 81100 (WOODBRIDGE)
ATTN TECHNICAL REPORTS BRANCH 81300
ATTN CHAIRMAN, EDITORIAL COMMITTEE
ATTN CHIEF, 21000
ATTN CHIEF, 21100
ATTN CHIEF, 21200
ATTN CHIEF, 21300
ATTN CHIEF, 21400
ATTN CHIEF, 21500
ATTN CHIEF, 22000
ATTN CHIEF, 22100
ATTN CHIEF, 22300
ATTN CHIEF, 22800
ATTN CHIEF, 22900
ATTN SPOHN, D., 21300
ATTN KERRIS, K., 22900
ATTN WIMENITZ, F., 20240
ATTN WYATT, W.T., 21300 (3 COPIES)

END

DATE
FILMED

8-80

DTIC

