

AD-A087 460

ARMY ELECTRONICS RESEARCH AND DEVELOPMENT COMMAND WS--ETC F/G 4/2
19705A MLRS, MISSILE NUMBERS 198, 167, 166, ROUND NUMBERS B-82,--ETC(U)
FEB 80

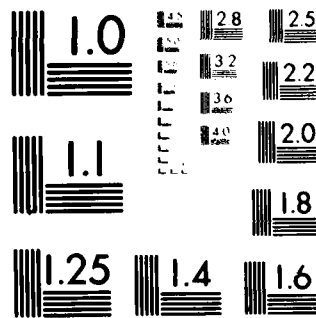
UNCLASSIFIED

ERADCOM/ASL-DR-1128

NL

100-1
AL-100-1

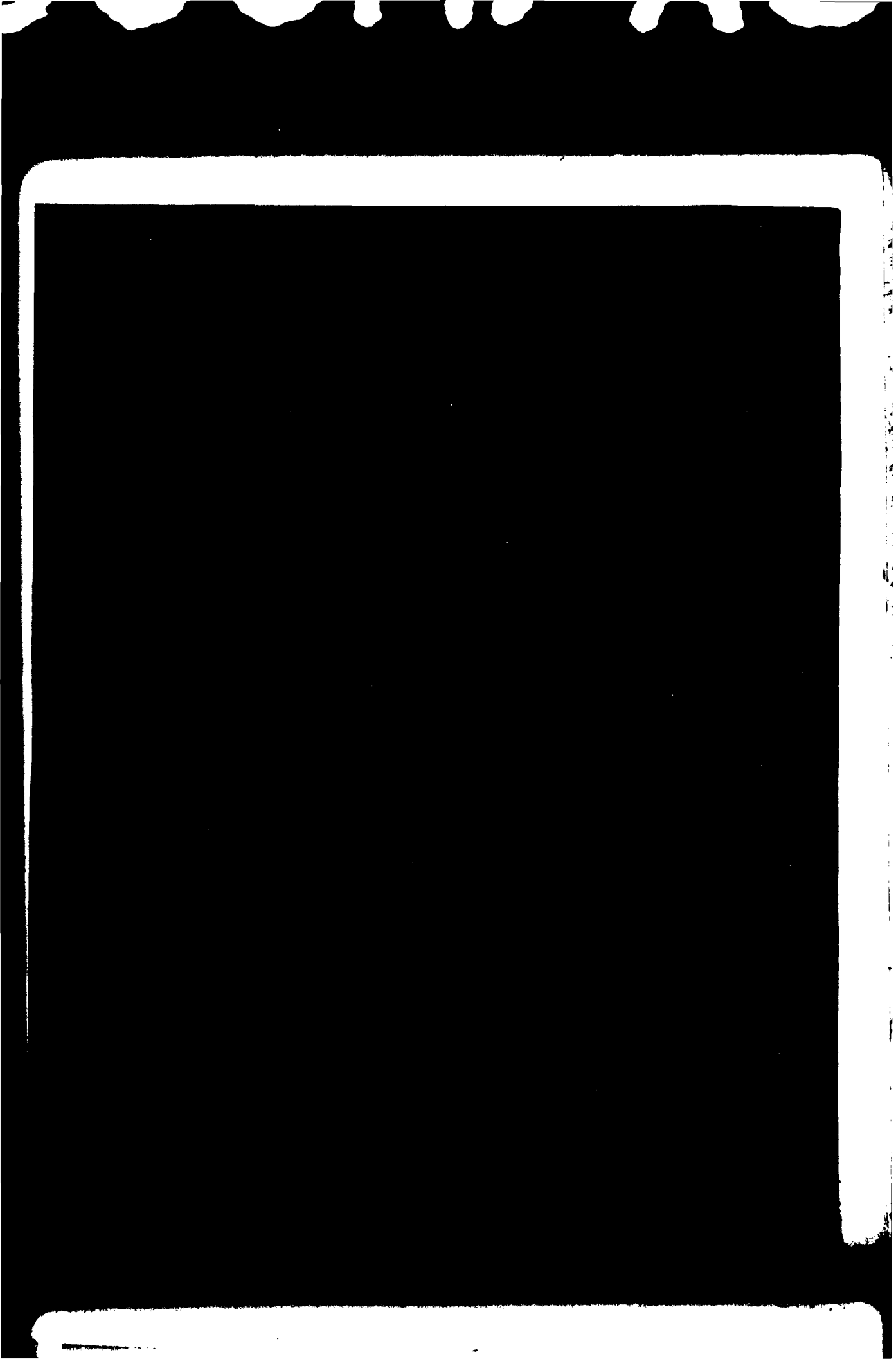
END
DATE
FILMED
9-80
DTIC



MICROCOPY RESOLUTION TEST CHART
NATIONAL BUREAU OF STANDARDS-1963-A

ADA 087460

80 8 4 256



DISCLAIMER NOTICE

**THIS DOCUMENT IS BEST QUALITY
PRACTICABLE. THE COPY FURNISHED
TO DTIC CONTAINED A SIGNIFICANT
NUMBER OF PAGES WHICH DO NOT
REPRODUCE LEGIBLY.**

UNCLASSIFIED

SECURITY CLASSIFICATION OF THIS PAGE (When Data Entered)


REPORT DOCUMENTATION PAGE		READ INSTRUCTIONS BEFORE COMPLETING FORM
1. REPORT NUMBER DR 1128	2. GOVT ACCESSION NO. AD-A087460	3. RECIPIENT'S CATALOG NUMBER
4. TITLE (and Subtitle) 1970SA MLRS, Missile Numbers 198, 167, 166, Round Numbers B-82, B-83, B-84, 11 February 1989.		5. TYPE OF REPORT & PERIOD COVERED
7. AUTHOR(s) White Sands/Meteorological Team		6. PERFORMING ORG. REPORT NUMBER
9. data rept. White Sands/Meteorological Team		8. CONTRACT OR GRANT NUMBER(s) DA Task/1F665702D127/02
14. ERADCOM/ASK-DR-1128/		10. PROGRAM ELEMENT, PROJECT, TASK AREA & WORK UNIT NUMBERS 12/17
11. CONTROLLING OFFICE NAME AND ADDRESS US Army Electronics Research & Development Cnd Atmospheric Sciences Laboratory White Sands Missile Range, New Mexico 88002		12. REPORT DATE February 1989
14. MONITORING AGENCY NAME & ADDRESS (if different from Controlling Office) US Army Electronics Research & Development Cnd Adelphi, MD 20783		13. NUMBER OF PAGES 17
15. SECURITY CLASS. (of this report) UNCLASSIFIED		15a. DECLASSIFICATION/DOWNGRADING SCHEDULE
16. DISTRIBUTION STATEMENT (of this Report) <div style="border: 1px solid black; padding: 5px; width: fit-content; margin: 10px auto;"> <p>DISTRIBUTION STATEMENT A Approved for public release; Distribution Unlimited</p> </div>		
17. DISTRIBUTION STATEMENT (of the abstract entered in Block 20, if different from Report) Approved for public release; distribution unlimited.		
18. SUPPLEMENTARY NOTES		
19. KEY WORDS (Continue on reverse side if necessary and identify by block number)		
20. ABSTRACT (Continue on reverse side if necessary and identify by block number) Meteorological data gathered for the launching of the 1970SA MLRS, Missile Numbers 198, 167, 166, Round Numbers B-82, B-83, B-84 are presented in tabular form.		

410663

13

CONTENTS

INTRODUCTION -----	1
DISCUSSION -----	1
MAP -----	2
TABLES:	
1. Surface Observation taken at 0800 MST at LC-33 -----	3
2. Snake Pilot-Balloon-Measured Wind Data at 0800 MST -----	4
3. Denver Site Pilot-Balloon-Measured Wind Data at 0800 MST -----	5
4. JAL Significant Level Data at 0800 MST -----	6
5. JAL Upper Air Data at 0800 MST -----	7
6. JAL Mandatory Levels at 0800 MST -----	12

Accession For	
WTIS GRAM DDC TAB Unannounced Justification	
By _____	
Distribution/ _____	
Availability Codes	
Dist.	Avail and/or special
A	23 G

INTRODUCTION

19705A MLRS, Missile Numbers 198, 167 and 166, Round Numbers B-82, B-83 and B-84, were launched from Snake White Sands Missile Range (WSMR), New Mexico, at 0802:57, 0803:01 and 0803:05 MST on 11 February 1980. The scheduled launch times were 0800, 0800:04 and 0800:08 MST.

DISCUSSION

Meteorological data were recorded and reduced by the White Sands Meteorological Team, Atmospheric Sciences Laboratory (ASL), White Sands Missile Range, New Mexico. The data were obtained by the following methods:

1. Observations

a. Surface

(1) Standard surface observations to include pressure, temperature ($^{\circ}\text{C}$), relative humidity, dew point ($^{\circ}\text{C}$), density (gm/m^3), wind direction and speed, and cloud cover were made at the Snake Met Site at T-0 minutes.

(2) Monitor of wind speed and direction from one anemometer was provided in the launch control room.

b. Upper Air

(1) Low level wind data were obtained from RAPTS T-9 pibal observation at:

SITE AND ALTITUDE

Snake	360 meters
Denver	2 km

(2) Air structure data (rawinsonde) were collected at the following Met Sites. Data were collected from surface to 96,000 feet in 500-foot increments.

SITE AND TIME

Jallen 0800 MST

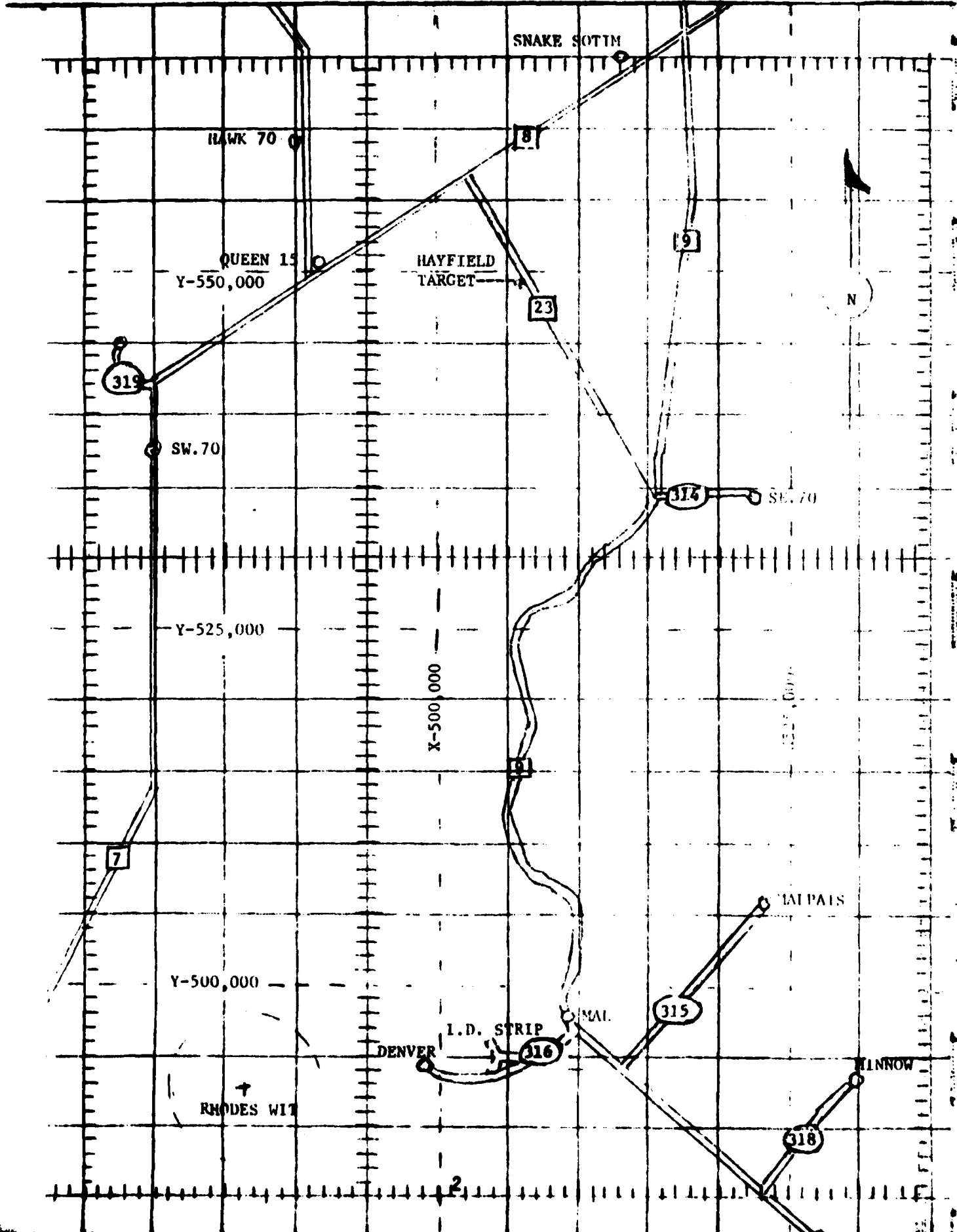


TABLE 1. Surface Observations taken at 0800 MST, 11 February 1980, at Snake Site, 19705A MLRS, Missile Numbers 198, 167 and 166, Round Numbers B-82, B-83 and B-84.

ELEVATION	Unknown	FT/MSL
PRESSURE	865.0	MBS
TEMPERATURE	1.0	°C
RELATIVE HUMIDITY	69	%
DEW POINT	-4.1	°C
DENSITY	1095	GM/M ³
WIND SPEED	05	KTS
WIND DIRECTION	060	DEGREES
CLOUD COVER	0	C1

STATION ALTITUDE 5051.00 FEET MSL
 11 FEB. 60 0800 HRS MST
 ASCENSION NO. 39

SIGNIFICANT LEVEL DATA
 042003009
 JALLEN
 TABLE 4

GEODETIC COORDINATES
 33.16712 LAT DEG
 106.49511 LONG DEG

PRESSURE MILLIBARS	GEOMETRIC ALTITUDE MSL FEET	TEMPERATURE AIR DEGREES CENTIGRADE	DEWPOINT CENTIGRADE	REL. HUM. PERCENT
877.5	4051.0	-5.0	-6.9	76.0
867.0	4364.3	-1.0	-5.4	72.0
850.0	4683.1	-0.4	-6.6	63.0
809.0	6185.5	.7	-13.3	34.0
771.2	7045.8	.0	-14.0	34.0
742.8	8432.7	.0	-20.8	19.0
700.0	9983.7	-3.4	-22.0	22.0
644.2	12125.0	-7.5	-27.1	19.0
610.0	13517.3	-8.7	-28.1	19.0
500.0	16489.3	-18.4	-35.7	20.0
400.0	23825.5	-31.5	-46.0	22.0
356.8	25821.4	-36.8	-49.9	24.0
300.0	30306.0	-46.7		
250.0	34208.5	-55.7		
247.6	34410.5	-55.4		
232.0	35761.8	-53.0		
200.0	38919.4	-55.1		
184.4	40634.2	-53.6		
121.2	49366.6	-61.7		
100.0	53292.2	-61.2		
77.6	58444.4	-65.3		
70.0	60524.3	-63.6		
61.2	63265.8	-60.7		
50.8	67050.5	-64.4		
50.0	67362.2	-63.0		
43.0	70449.7	-63.0		
30.0	77844.7	-59.0		
22.2	84066.5	-59.4		
20.0	86831.5	55.9		
14.0	96298.1	-54.9		

STATION ALTITUDE 4051.00 FEET MSL
 11 FEB. 60
 ASCENSION NO. 39

UPPER AIR DATA
 0420330039
 JALLEN
 TABLE 5

GEODETIC COORDINATES
 33.16712 LAT DEG
 106.49511 LONG DEG

GEOMETRIC ALTITUDE MSL FEET	PRESSURE HILLIBARMS	TEMPERATURE AIR DEGREES	TEMPERATURE DEWPOINT DEGREES CENTIGRADE	REL. HUM. PERCENT	DENSITY GM/CUBIC METER	SPEED OF SOUND KNOTS	WIND DATA CIRESSION (N) DEGREES (E) KNOTS	INDEX OF REFRACTION
4751.0	877.5	-5.0	-8.6	76.0	1136.4	638.4	60.0	1.000270
4500.0	862.5	-5.7	-7.0	69.7	1101.5	643.4		1.000266
5000.0	846.3	-7.0	-7.0	60.4	1072.7	644.0		1.000259
5500.0	830.3	-7.2	-9.2	49.3	1057.1	644.5		1.000251
6000.0	814.7	-7.5	-12.1	38.1	1055.8	644.9		1.000243
6500.0	799.4	-7.5	-13.5	34.0	1016.5	644.8	3.2	1.000237
7000.0	784.4	-7.2	-13.7	34.0	998.4	644.5	6.0	1.000233
7500.0	769.6	-7.0	-14.3	33.2	980.6	644.2	7.9	1.000229
8000.0	755.1	-7.0	-17.4	25.6	962.3	644.1	9.7	1.000222
8500.0	740.9	-7.1	-20.7	19.1	944.9	643.9	9.9	1.000216
9000.0	726.8	-7.2	-21.2	20.1	930.7	642.6	9.8	1.000213
9500.0	713.1	-7.3	-21.6	21.1	916.8	641.3	8.5	1.000210
10000.0	699.6	-7.4	-22.0	22.0	903.0	640.0	7.1	1.000207
10500.0	686.1	-7.4	-23.2	21.3	888.9	638.8	5.9	1.000203
11000.0	672.9	-7.5	-24.4	20.6	875.0	637.7	5.2	1.000199
11500.0	660.0	-7.6	-25.6	19.9	861.3	636.5	4.1	1.000196
12000.0	647.3	-7.7	-26.8	19.2	847.8	635.4	3.0	1.000192
12500.0	634.8	-7.8	-27.3	19.0	833.2	634.7	1.5	1.000189
13000.0	622.5	-8.3	-27.7	19.0	818.3	634.2	1.1	1.000186
13500.0	610.4	-8.7	-28.1	19.0	803.6	633.7	2.7	1.000182
14000.0	598.3	-9.6	-28.8	19.1	790.7	632.5	4.4	1.000179
14500.0	586.3	-10.6	-29.6	19.2	778.0	631.3	6.9	1.000176
15000.0	574.9	-11.6	-30.3	19.3	765.4	630.2	9.9	1.000173
15500.0	563.3	-12.6	-31.1	19.4	753.1	629.0	11.9	1.000170
16000.0	552.3	-13.5	-31.9	19.5	741.0	627.8	14.0	1.000167
16500.0	541.4	-14.5	-32.6	19.6	729.1	626.6	15.0	1.000165
17000.0	530.7	-15.5	-33.4	19.7	717.3	625.4	16.1	1.000162
17500.0	520.2	-16.5	-34.2	19.8	705.6	624.2	17.4	1.000159
18000.0	509.9	-17.4	-35.0	19.9	694.5	623.0	18.7	1.000156
18500.0	499.8	-18.4	-35.7	20.0	683.4	621.8	20.0	1.000154
19000.0	489.4	-19.7	-36.7	20.2	672.5	620.3	21.3	1.000151
19500.0	479.3	-20.9	-37.7	20.4	661.8	618.8	22.3	1.000149
20000.0	469.4	-22.1	-38.6	20.6	651.3	617.3	23.0	1.000146
20500.0	459.7	-23.3	-39.6	20.8	640.9	615.8	24.0	1.000144
21000.0	450.2	-24.6	-40.5	20.9	630.8	614.3	25.3	1.000142
21500.0	440.9	-25.8	-41.5	21.1	620.8	612.8	26.4	1.000139
22000.0	431.7	-27.0	-42.5	21.3	611.0	611.2	27.5	1.000137
22500.0	422.8	-28.2	-43.4	21.5	601.3	609.7	28.2	1.000135
23000.0	414.0	-29.5	-44.4	21.7	591.9	608.2	28.4	1.000133
23500.0	405.3	-30.7	-45.4	21.9	582.6	606.6		1.000130

XX WIND DATA INVALID DUE TO MISSING RAW AZIMUTH AND ELEVATION ANGLES.

STATION ALTITUDE 4051.00 FEET MSL
 11 FEB 60 0800 HRS MST
 ASCENSION NO. 39

UPPER AIR DATA
 042002039
 JALLEN

GEODETIC COORDINATES
 33.16712 LAT DEG
 106.49511 LON DEG

TABLE 5 (CONT)

GEOMETRIC ALTITUDE MSL FEET	PRESSURE MILLIBARS	AIR TEMPERATURE DEGREES	TEMPERATURE DEWPOINT CENTIGRADE	REL. HUM. PERCENT	DENSITY GM/CUBIC METER	SPEED OF SOUND KNOTS	DIRECTION DEGREES (TN)	WIND DATA SPEED KNOTS	INDEX OF REFRACTION
2400.0	397.0	-32.0	-46.4	22.2	5/3.3	605.0	274.8	28.8	1.000128
2500.0	388.5	-33.3	-47.3	22.7	564.1	603.4	274.1	30.0	1.000126
2500.0	380.1	-34.6	-48.3	23.2	555.1	601.7	273.5	31.1	1.000124
2550.0	372.0	-35.9	-49.3	23.7	546.2	600.0	272.4	31.7	1.000122
2600.0	363.9	-37.2	-50.6	23.0**	537.2	598.4	271.4	32.4	1.000120
2650.0	355.8	-38.3	-52.6	20.4**	527.8	597.0	269.6	33.4	1.000118
2700.0	347.9	-39.4	-54.7	17.7**	518.5	595.6	268.0	34.6	1.000116
2750.0	340.2	-40.5	-56.9	15.0**	509.4	594.2	267.4	37.0	1.000114
2800.0	332.7	-41.6	-59.4	12.3**	500.5	592.8	267.0	39.5	1.000112
2850.0	325.3	-42.7	-62.1	9.7**	491.8	591.4	266.2	41.6	1.000110
2900.0	318.1	-43.8	-65.4	7.0**	483.2	590.0	265.4	43.6	1.000108
2950.0	311.0	-44.9	-69.7	4.3**	474.8	588.5	264.6	45.8	1.000106
3000.0	304.1	-46.0	-76.8	1.6**	466.5	587.1	264.0	48.1	1.000104
3050.0	297.3	-47.1			458.3	585.7	262.9	50.2	1.000102
3100.0	290.4	-48.3			450.0	584.2	260.3	52.1	1.000100
3150.0	283.7	-49.5			441.8	582.7	258.0	54.1	1.000098
3200.0	277.2	-50.6			433.9	581.2	256.0	57.0	1.000097
3250.0	270.8	-51.8			426.1	579.7	254.2	60.0	1.000095
3300.0	264.5	-52.9			418.4	578.1	253.8	62.6	1.000093
3350.0	258.4	-54.1			410.9	576.6	253.3	65.0	1.000092
3400.0	252.4	-55.2			403.5	575.1	253.9	67.8	1.000090
3450.0	246.6	-56.2			395.9	573.8	253.7	71.3	1.000088
3500.0	240.8	-57.4			384.4	572.5	253.5	74.6	1.000086
3550.0	235.1	-58.7			373.2	571.1	252.8	76.6	1.000083
3600.0	229.6	-59.1			363.6	570.8	252.1	78.6	1.000081
3650.0	224.3	-59.5			355.6	577.4	251.4	80.0	1.000079
3700.0	219.0	-59.8			347.8	577.0	250.7	81.4	1.000077
3750.0	213.9	-54.1			340.2	576.5	249.4	82.9	1.000076
3800.0	208.9	-54.5			332.8	576.1	247.9	84.5	1.000074
3850.0	204.0	-54.8			325.5	575.6	247.0	85.8	1.000072
3900.0	199.2	-55.0			318.2	575.4	246.9	86.6	1.000071
3950.0	194.6	-54.6			310.1	575.9	246.7	87.4	1.000069
4000.0	190.0	-54.2			302.3	576.5	250.0	89.2	1.000067
4050.0	185.6	-53.7			294.6	577.1	253.2	91.3	1.000066
4100.0	181.2	-53.9			287.9	576.8	256.2	89.3	1.000064
4150.0	176.9	-54.4			281.7	576.2	259.4	84.7	1.000063
4200.0	172.7	-54.9			275.6	575.6	262.0	81.0	1.000061
4250.0	168.6	-55.3			269.6	575.0	262.0	79.5	1.000060
4300.0	164.6	-55.8			263.8	574.4	261.9	78.0	1.000059
4350.0	160.7	-56.3			258.1	573.7	262.0	80.2	1.000057

** AT LEAST ONE ASSUMED RELATIVE HUMIDITY VALUE WAS USED IN THE INTERPOLATION.

UPPER AIR DATA
04200300J9
JALLEN

STATION ALTITUDE 4051.00 FEET MSL
11 FEB. 68 0800 HRS MST
ASCENSION NO. J9

GEODETIC COORDINATES
33.16712 LAT DEG
106.49511 LON DEG

TABLE 5 (cont)

GEOMETRIC ALTITUDE MSL FEET	PRESSURE MILLIBARS	TEMPERATURE AIR DEGREES	REL. HUM. PERCENT	DENSITY GM/CUBIC METER	SPEED OF SOUND KNOTS	WIND DATA		INDEX OF REFRACTION
						DEWPOINT CENTIGRADE	DIRECTION DEGREES(TN)	
4400.0	156.9	-56.7		252.5	573.1	262.1		1.000056
4450.0	153.1	-57.2		247.0	572.5	262.3		1.000055
4500.0	149.5	-57.6		241.7	571.9	262.6		1.000054
4550.0	146.0	-58.1		236.4	571.3	262.9		1.000053
4600.0	142.5	-58.6		231.3	570.7	262.6		1.000052
4650.0	139.1	-59.0		226.3	570.1	262.6		1.000050
4700.0	135.8	-59.5		221.4	569.4	264.0		1.000049
4750.0	132.6	-60.0		216.6	568.8	267.8		1.000048
4800.0	129.4	-60.4		212.0	568.2	271.5		1.000047
4850.0	126.4	-60.9		207.4	567.6	272.2		1.000046
4900.0	123.4	-61.4		202.9	567.0	272.9		1.000045
4950.0	120.4	-61.7		198.4	566.5	270.9		1.000044
5000.0	117.5	-61.6		193.5	566.6	268.3		1.000043
5050.0	114.7	-61.6		188.8	566.7	266.7		1.000042
5100.0	111.9	-61.5		184.2	566.8	266.5		1.000041
5150.0	109.2	-61.4		179.7	566.9	266.2		1.000040
5200.0	106.6	-61.4		175.3	566.9	266.2		1.000039
5250.0	104.0	-61.5		171.0	567.0	266.3		1.000038
5300.0	101.5	-61.2		166.8	567.1	266.4		1.000037
5350.0	99.0	-61.4		162.9	567.0	266.5		1.000036
5400.0	96.6	-61.8		159.2	566.4	266.7		1.000035
5450.0	94.3	-62.2		155.6	565.9	266.7		1.000035
5500.0	92.0	-62.6		152.1	565.4	266.6		1.000034
5550.0	89.7	-63.0		148.7	564.8	266.9		1.000033
5600.0	87.5	-63.4		145.4	564.3	269.0		1.000032
5650.0	85.4	-63.8		142.1	563.7	269.1		1.000032
5700.0	83.3	-64.1		138.9	563.2	269.9		1.000031
5750.0	81.3	-64.5		135.8	562.7	270.8		1.000030
5800.0	79.3	-64.9		132.7	562.1	271.6		1.000030
5850.0	77.4	-65.3		129.7	561.7	272.0		1.000029
5900.0	75.5	-64.8		126.3	562.3	272.4		1.000028
5950.0	73.6	-64.4		122.9	562.8	273.3		1.000027
6000.0	71.8	-64.0		119.7	563.4	274.9		1.000027
6050.0	70.1	-63.6		116.5	563.9	276.5		1.000026
6100.0	68.4	-63.1		113.4	564.6	278.6		1.000025
6150.0	66.7	-62.6		110.4	565.3	281.4		1.000025
6200.0	65.1	-62.0		107.5	566.0	284.8		1.000024
6250.0	63.5	-61.5		104.6	566.8	288.1		1.000023
6300.0	62.0	-61.0		101.8	567.5	291.6		1.000023
6350.0	60.5	-60.9		99.3	567.5	295.7		1.000022

STATION ALTITUDE 4051.00 FEET MSL
 11 FEB. 80
 ASCENSION NO. 39

UPPER AIR DATA
 0420000039
 JALLEN
 TABLE 5 (cont)

GEODETTIC COORDINATES
 33.16712 LAT DEG
 106.49511 LON DEG

GEOMETRIC ALTITUDE MSL FEET	PRESSURE MILLIBARS	TEMPERATURE AIR DEGREES CENTIGRADE	REL. HUM. PERCENT	DENSITY GM/CUBIC METER	SPEED OF SOUND KNOTS	DIRECTION, DEGREES(TN)	WIND DATA SPEED KNOTS	INDEX OF REFRACTION
6400.0	59.0	-61.4		97.1	566.9	298.2	22.7	1.000022
6350.0	57.6	-61.9		95.0	566.2	300.7	21.6	1.000021
6300.0	56.2	-62.4		92.9	565.6	303.4	20.6	1.000021
6250.0	54.8	-62.9		90.9	564.9	303.5	20.1	1.000020
6200.0	53.5	-63.4		88.9	564.3	303.4	19.7	1.000020
6150.0	52.2	-63.9		85.9	563.6	303.2	19.3	1.000019
6100.0	51.0	-64.3		85.0	563.0	301.0	20.2	1.000019
6050.0	49.7	-63.0		82.4	564.8	298.6	21.2	1.000018
6000.0	48.5	-63.0		80.4	564.8	296.9	22.2	1.000018
6950.0	47.3	-63.0		78.5	564.8	294.1	23.7	1.000017
6900.0	46.2	-63.0		76.5	564.8	291.6	25.3	1.000017
6850.0	45.1	-63.0		74.7	564.8	289.4	26.9	1.000017
6800.0	44.0	-63.0		72.9	564.8	289.4	26.5	1.000016
6750.0	42.9	-63.0		71.1	564.8	290.0	25.5	1.000016
6700.0	41.9	-62.7		69.3	565.2	290.6	24.6	1.000015
6650.0	40.9	-62.4		67.5	565.5	292.2	22.8	1.000015
6600.0	39.9	-62.2		65.8	565.9	296.2	19.8	1.000015
6550.0	38.9	-61.9		64.2	566.2	301.5	16.9	1.000014
6500.0	38.0	-61.6		62.5	566.6	309.0	14.2	1.000014
6450.0	37.1	-61.4		61.0	567.0	307.7	14.5	1.000014
6400.0	36.2	-61.1		59.4	567.3	305.7	15.1	1.000013
6350.0	35.3	-60.8		57.9	567.7	303.6	15.7	1.000013
6300.0	34.5	-60.5		56.5	568.1	302.2	16.5	1.000013
6250.0	33.6	-60.3		55.0	568.4	300.6	17.7	1.000012
6200.0	32.8	-60.0		53.6	568.8	299.6	18.9	1.000012
6150.0	32.0	-59.7		52.3	569.1	298.6	20.0	1.000012
6100.0	31.3	-59.5		51.0	569.5	299.4	19.8	1.000011
6050.0	30.5	-59.2		49.7	569.9	300.2	19.5	1.000011
6000.0	29.8	-59.0		48.4	570.1	301.0	19.3	1.000011
6950.0	29.1	-59.0		47.3	570.0	302.3	18.8	1.000011
6900.0	28.4	-59.1		46.2	570.0	304.0	18.1	1.000010
6850.0	27.7	-59.1		45.1	570.0	305.9	17.5	1.000010
6800.0	27.0	-59.1		44.0	569.9	307.5	16.9	1.000010
6750.0	26.4	-59.2		43.0	569.9	307.1	16.6	1.000010
6700.0	25.8	-59.2		42.0	569.8	306.7	16.3	1.000009
6650.0	25.2	-59.2		41.0	569.8	306.3	16.0	1.000009
6600.0	24.6	-59.3		40.0	569.8	303.5	16.2	1.000009
6550.0	24.0	-59.3		39.0	569.7	299.6	16.8	1.000009
6500.0	23.4	-59.3		38.1	569.7	296.4	17.5	1.000008
6450.0	22.8	-59.4		37.2	569.6	294.5	18.5	1.000008

UPPER AIR DATA
 0420030039
 JALLEN
 TABLE 5 (cont)

STATION ALTITUDE 4051.00 FEET MSL
 11 FEB. 43
 ASCENSION NO. 39

GEODETIC COORDINATES
 33.16712 LAT DEG
 106.49511 LONG DEG

GEOMETRIC ALTITUDE MSL FEET	PRESSURE MILLIBARS	TEMPERATURE AIR DEGREES	REL. HUM. PERCENT	DENSITY GM/CUBIC METER	SPEED OF SOUND KNOTS	WIND DATA DIRECTION DEGREES(TN)	SPEED KNOTS	INDEX OF REFRACTION
8400.0	22.9	-59.4		36.3	569.6	296.6	20.5	1.000008
8450.0	21.9	-42.0		32.9	592.3	298.2	22.6	1.000007
8500.0	21.4	-21.0		29.6	618.6	299.6	24.6	1.000007
8550.0	21.0	-		26.8	643.8	300.7	26.4	1.000009
8600.0	20.6	21.0		24.5	658.1	300.9	27.1	1.000005
8650.0	20.3	42.0		22.4	681.6	301.2	27.9	1.000005
8700.0	19.9	53.9		21.2	704.6	301.5	28.6	1.000005
8750.0	19.5	48.1		21.2	698.2	301.7	29.3	1.000005
8800.0	19.1	42.2		21.1	691.8	300.7	29.1	1.000005
8850.0	18.8	36.4		21.1	685.4	299.3	28.7	1.000005
8900.0	18.4	30.5		21.1	678.9	297.8	28.3	1.000005
8950.0	18.1	24.7		21.2	672.3	296.3	27.9	1.000005
9000.0	17.7	18.8		21.2	665.7	293.9	28.8	1.000005
9050.0	17.4	13.0		21.2	659.0	289.3	33.8	1.000005
9100.0	17.1	7.1		21.2	652.2	285.9	38.9	1.000005
9150.0	16.8	1.3		21.3	645.3	283.3	44.2	1.000005
9200.0	16.5	-4.6		21.4	638.4	281.3	49.6	1.000005
9250.0	16.2	-10.4		21.4	631.4			1.000005
9300.0	15.9	-16.3		21.5	624.4			1.000005
9350.0	15.6	-22.1		21.6	617.2			1.000005
9400.0	15.3	-28.0		21.7	610.0			1.000005
9450.0	15.0	-33.9		21.8	602.6			1.000005
9500.0	14.7	-39.7		21.9	595.2			1.000005
9550.0	14.4	-45.6		22.1	587.7			1.000005
9600.0	14.2	-51.4		22.2	580.1			1.000005

STATION ALTITUDE 4952.00 FEET MSL
 11 FEB. 60 0800 HRS MST
 ASCENSION NO. 59

MANDATORY LEVELS
 0420030039
 JALLEN
 TABLE 6

GEODETIC COORDINATES
 33.16712 LAT DEG
 106.49511 LON DEG

PRESSURE GEOPOTENTIAL		TEMPERATURE		REL. HUM.		WIND DATA	
MILLIBARS	FEET	AIR DEGREES	DEWPOINT CENTIGRADE	PERCENT	DIRECTION DEGREES(TN)	SPEED KNOTS	
850.0	4881.	-4	-6.6	63.	9999.0	9999.0XX	
800.0	6476.	.5	-13.5	34.	9999.0	9999.0XX	
750.0	8172.	.0	-18.7	23.	355.2	8.5	
700.0	9975.	-3.4	-22.0	22.	10.5	8.6	
650.0	11884.	-7.1	-26.5	19.	328.2	4.4	
600.0	13922.	-9.5	-28.7	19.	239.4	2.5	
550.0	16110.	-13.8	-32.0	20.	284.3	12.4	
500.0	18465.	-18.4	-35.7	20.	269.8	16.7	
450.0	21013.	-24.6	-40.6	21.	273.7	24.1	
400.0	23798.	-31.5	-46.0	22.	275.0	28.5	
350.0	26838.	-39.1	-54.1	18.**	268.4	34.3	
300.0	30249.	-46.7			263.6	49.4	
250.0	34138.	-55.7			253.8	69.2	
200.0	38830.	-55.1			246.9	66.4	
175.0	41539.	-54.6			260.9	62.7	
150.0	44854.	-57.6			262.6	83.5	
125.0	48660.	-61.1			272.5	67.6	
100.0	53140.	-61.2			266.5	53.9	
80.0	57647.	-64.8			271.4	43.1	
70.0	60323.	-63.6			276.5	37.3	
60.0	63451.	-61.1			296.6	23.5	
50.0	67136.	-63.0			299.5	20.9	
40.0	71645.	-62.2			295.2	20.4	
30.0	77521.	-59.0			300.7	19.4	
25.0	81271.	-59.2			306.2	15.9	
20.0	86434.	55.9			301.4	28.3	
15.0	94296.	-33.5					

** AT LEAST ONE ASSUMED RELATIVE HUMIDITY VALUE WAS USED IN THE INTERPOLATION.

XX WIND DATA INVALID DUE TO MISSING RAW AZIMUTH AND ELEVATION ANGLES.

DATE
ILME