

AD-A087 465 ARMY ELECTRONICS RESEARCH AND DEVELOPMENT COMMAND WS--ETC F/G 4/2  
197038 MLRS, MISSILE NUMBERS 33, 31, ROUND NUMBERS B-93, B-94, --ETC(U)  
FEB 80

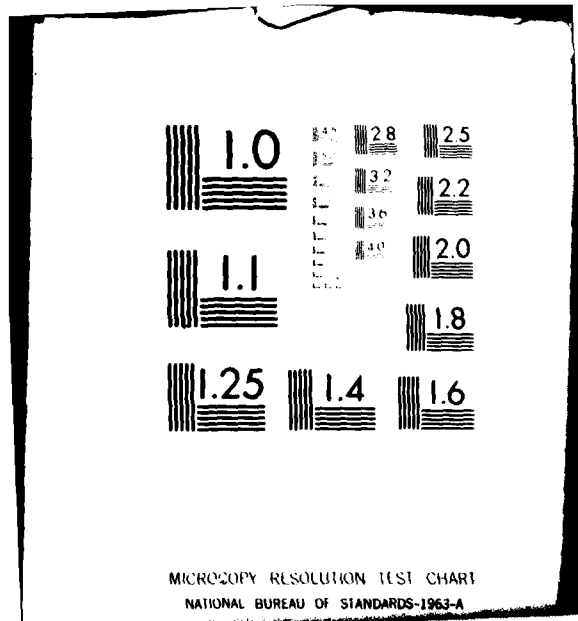
UNCLASSIFIED ERADCOM/ASD-DR-1134

NL

1 of 1  
AS [unclear]



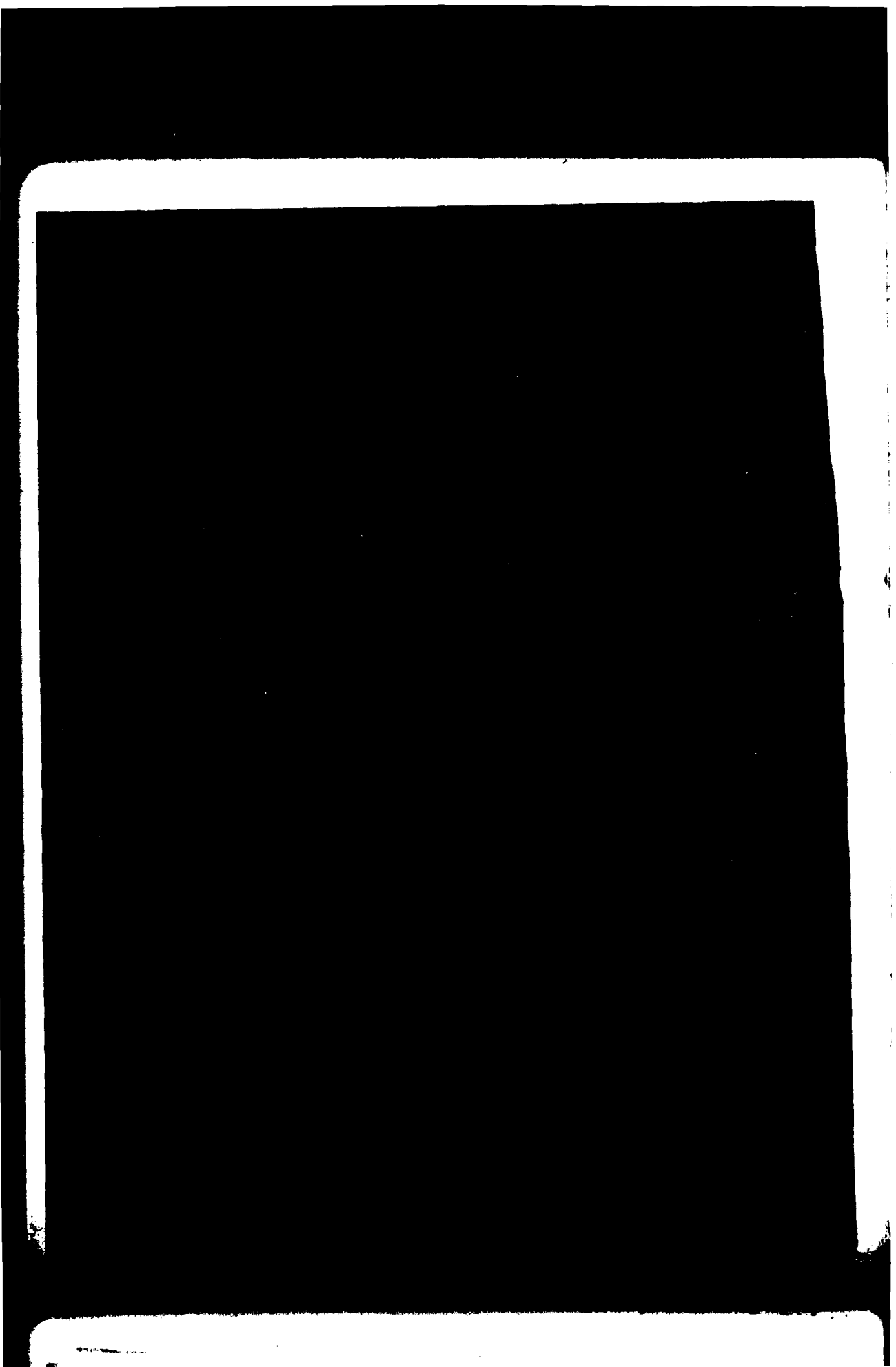
END  
DATE  
FILMED  
9-80  
DTIC



MICROCOPY RESOLUTION TEST CHART  
NATIONAL BUREAU OF STANDARDS-1963-A

ADA087465

80 8 4 263



## **DISCLAIMER NOTICE**

**THIS DOCUMENT IS BEST QUALITY PRACTICABLE. THE COPY FURNISHED TO DTIC CONTAINED A SIGNIFICANT NUMBER OF PAGES WHICH DO NOT REPRODUCE LEGIBLY.**

UNCLASSIFIED

(14) ERAD COM/ASD-DR-1134

SECURITY CLASSIFICATION OF THIS PAGE (When Data Entered)

REPORT DOCUMENTATION PAGE		READ INSTRUCTIONS BEFORE COMPLETING FORM
1. REPORT NUMBER DR 1134	2. GOVT ACCESSION NO. AD-A087465	3. RECIPIENT'S CATALOG NUMBER
4. TITLE (and Subtitle) 19703B MLRS, Missile Numbers 33, 31, Round Numbers B-93, B-94, 13 February 1980.	5. TYPE OF REPORT & PERIOD COVERED (9) Meteorological data report	6. PERFORMING ORG. REPORT NUMBER
7. AUTHOR(s) White Sands Meteorological Team	8. CONTRACT OR GRANT NUMBER(s) (16) DA Task 1F655702D127-02	9. PERFORMING ORGANIZATION NAME AND ADDRESS (12) 19
10. PROGRAM ELEMENT, PROJECT, TASK AREA & WORK UNIT NUMBERS	11. CONTROLLING OFFICE NAME AND ADDRESS US Army Electronics Research & Development Cnd Atmospheric Sciences Laboratory White Sands Missile Range, NM 88002 (11)	12. REPORT DATE FEBRUARY 1980
13. MONITORING AGENCY NAME & ADDRESS (if different from Controlling Office) US Army Electronics Research & Development Cnd Adelphi, MD 20783	14. NUMBER OF PAGES 18	15. SECURITY CLASS. (of this report) UNCLASSIFIED
16. DISTRIBUTION STATEMENT (of this Report) <b>DISTRIBUTION STATEMENT A</b> Approved for public release; Distribution Unlimited		17. DECLASSIFICATION/DOWNGRADING SCHEDULE (17) 02
17. DISTRIBUTION STATEMENT (of the abstract entered in Block 20, if different from Report) Approved for public release; distribution unlimited.		
18. SUPPLEMENTARY NOTES		
19. KEY WORDS (Continue on reverse side if necessary and identify by block number)		
20. ABSTRACT (Continue on reverse side if necessary and identify by block number) Meteorological data gathered for the launching of 19703B MLRS, Missile Numbers 33, 31, Round Numbers B-93, B-94 are presented in tabular form.		

410663

JLM

CONTENTS

PAGE

INTRODUCTION----- 1

DISCUSSION----- 1

MAP----- 2

TABLES

1. Surface Observation Taken at "C" Station----- 3

2. LC-39 Pilot Balloon Measured Wind Data at 1400 MST----- 4

3. NICK Pilot Balloon Measured Wind Data at 1500 MST----- 5

4. LC-39 Pilot Balloon Measured Wind Data at 1515 MST----- 6

5. LC-37 Significant Level Data at 1400 MST----- 7

6. LC-37 Upper Air Data at 1400 MST----- 8

7. LC-37 Mandatory Levels at 1400 MST----- 10

8. LC-37 Significant Level Data at 1600 MST----- 11

9. LC-37 Upper Air Data at 1600 MST----- 12

10. LC-37 Mandatory Levels at 1600 MST----- 14

Accession For	
NTIS GRA&I	<input checked="" type="checkbox"/>
EDC TAB	<input type="checkbox"/>
Unannounced	<input type="checkbox"/>
Justification	<input type="checkbox"/>
By _____	
Distribution/	
Availability Codes	
Dist.	Avail and/or special
A	23 9



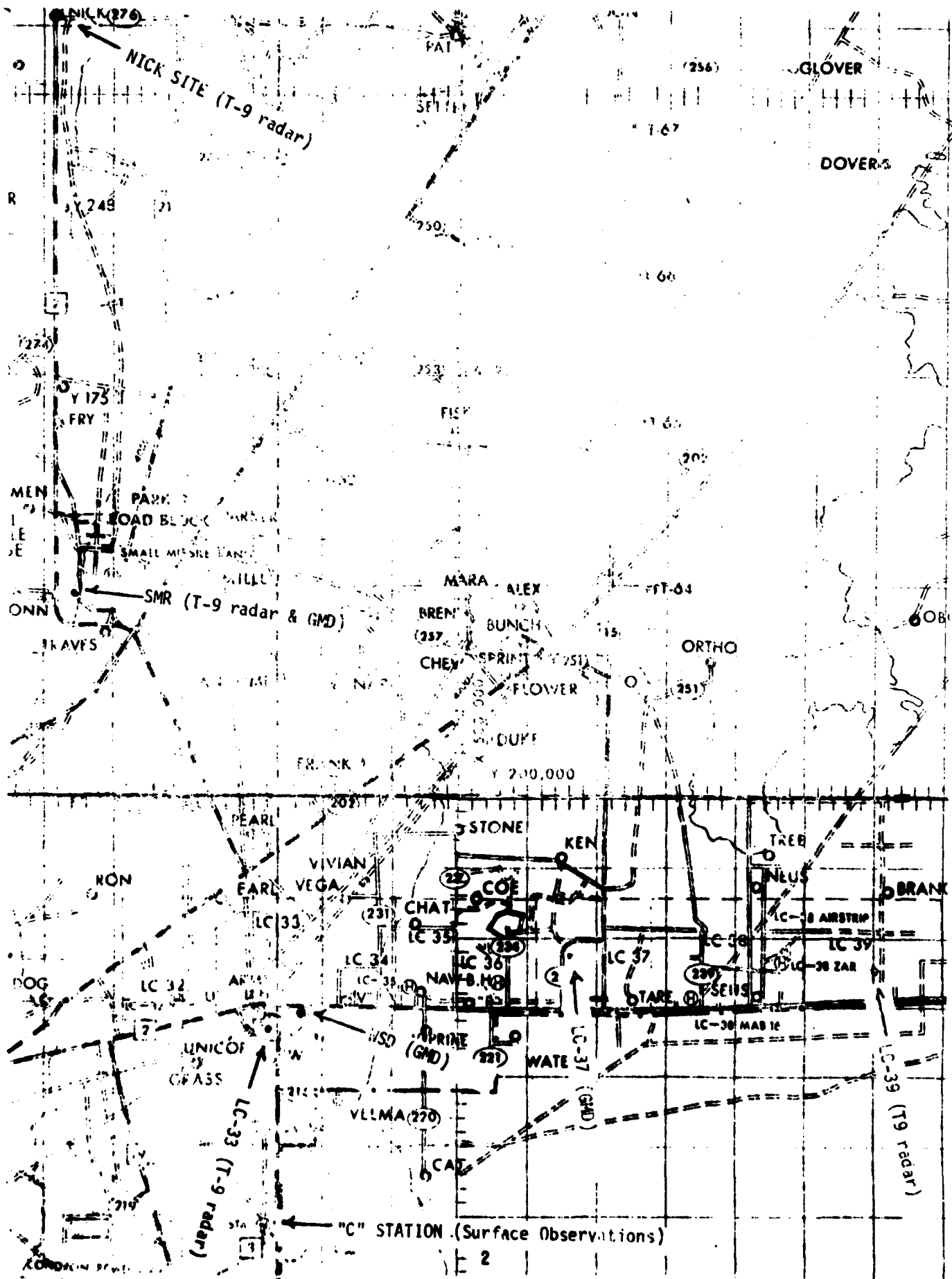


TABLE 1

SURFACE OBSERVATIONS OBTAINED FROM "C" STATION ON

13 February 1980

TIME MST	SKY CONDITIONS	WIND DIRECTION VELOCITY	WEATHER OR OBSCURATION TO VISIBILITY	TEMPERATURE AIR	TEMPERATURE SEA	TEMPERATURE SURFACE	WIND SPEED
0058	120SCT250SCT	20		25.950	24	29	160 10
0158	120SCTE250BKN	20		25.950	32	27	E100 06
0258	120SCT250SCT	20		25.950	34	29	010 05
0358	120SCT250SCT	20		25.930	32	25	E130 07
0458	120SCT250SCT	20		25.940	30	26	E100 03
0558	120SCTE250BKN	20		25.940	31	25	010 03
0658	60SCT120SCTE250BKN	30		25.960	32	24	020 03
0758	E60BKN120BKN250BKN	50		25.990	34	30	340 03
0858	E60BKN120BKN	50		25.995	41	33	090 04
0958	60SCTE120BKN250BKN	50		26.005	49	34	340 03
1058	120SCT250SCT	50		25.990	55	37	360 05
1158	65SCT120SCT250SCT	50		25.960	60	38	150 04
1258	65SCT120SCTE250BKN	50		25.935	60	37	270 04
1358	65SCT120SCTE250BKN	50		25.900	65	38	210 08
1458	65SCTE120BKN250BKN	50		25.885	66	36	210 08
1558	65SCTE120BKN250BKN	50		25.880	65	37	210 08
1658	65SCTE120BKN250BKN	50		25.880	62	36	200 08
1758	E120BKN250BKN	30		25.890	57	38	150 07
1858	E120BKN250BKN	20		25.905	56	37	160 06
1958	E1200VC	20		25.920	55	42	340 04
2058	E1200VC	20	L-	25.935	53	44	110 05
2158	E1200VC	20	L-	25.935	51	44	E120 05
2258	E1200VC	20		25.925	53	43	E120 05
2358	E600VC	20	RM-	25.925	52	45	150 08







STATION ALTITUDE 9097.27 FEET MSL  
 13 FEB. 68  
 ASCENSION NO. 10

SIGNIFICANT LEVEL DATA  
 0440180010  
 LC-37

GEODETIC COORDINATES  
 32.41141 LAT DEG  
 106.30852 LON DEG

TABLE 5

PRESSURE MILLIBARS	GEOMETRIC ALTITUDE MSL FEET	TEMPERATURE		REL. HUM. PERCENT
		AIR DEGREES CENTIGRADE	DEWPOINT CENTIGRADE	
875.8	4047.3	17.7	.4	31.0
869.0	4252.0	14.5	.7	39.0
850.0	4863.2	12.5	.3	43.0
798.2	6587.3	7.4	-1.0	55.0
736.0	8754.8	1.7	-2.0	73.0
700.0	10074.6	-2.0	-3.7	88.0
621.8	13137.9	-8.2	-8.5	98.0
612.6	13514.1	-8.9	-19.7	41.0
603.8	13987.4	-7.7	-18.1	43.0
586.2	14641.8	-9.3	-17.5	51.0
560.8	15764.5	-11.0	-22.2	39.0
544.4	16511.8	-12.7	-22.9	42.0
520.4	17634.7	-14.9	-22.7	51.0
500.0	18630.0	-17.0	-25.4	48.0
459.8	20682.9	-21.0	-31.8	37.0
438.6	21822.7	-24.2	-31.0	53.0
409.5	23454.0	-29.1	-31.0	79.0
400.0	24005.8	-29.4	-34.0	64.0
391.6	24503.4	-30.5	-30.2	57.0
385.4	24975.9	-31.6	-37.2	57.0
348.4	27196.5	-37.7	-47.7	54.0
331.0	28351.5	-40.9	-49.4	39.0
300.0	30525.2	-46.9		
266.8	33049.8	-53.0		

STATION ALTITUDE 4047.27 FEET MSL  
 19 FEB. 60  
 ASCENSION NO. 10

UPPER AIR DATA  
 0440180010  
 LC-37

GEOMETRIC COORDINATES  
 32.41141 LAT DEG  
 106.50852 LONG DEG

TABLE 6

GEOMETRIC ALTITUDE MSL FEET	PRESSURE MILLIBARS	TEMPERATURE		REL. HUM. PERCENT	DENSITY GM/CM <sup>3</sup> METER	SPEED OF SOUND M/SEC	WIND DATA		INDEX OF REFRACTION
		AIR DEGREES CENTIGRADE	WETBOLT DEGREES CENTIGRADE				DIRECTION DEGREES MAGNETIC	SPEED KNOTS	
4047.3	875.4	17.7	04	31.0	1045.7	665.5	300.0	1.0	1.000201
4500.0	861.2	13.7	06	40.6	1043.1	660.7	249.5	1.4	1.000202
5000.0	845.8	12.1	02	44.0	1030.0	658.9	230.1	2.5	1.000203
5500.0	830.4	10.6	-01	47.5	1016.7	657.2	222.0	3.7	1.000205
6000.0	815.3	9.1	-05	50.9	1003.5	655.4	218.2	5.1	1.000202
6500.0	800.6	7.6	-10	54.4	990.5	653.7	215.5	6.8	1.000204
7000.0	785.8	6.3	-12	58.5	976.9	652.1	219.7	7.5	1.000205
7500.0	771.3	5.0	-15	62.6	963.4	650.6	223.7	8.2	1.000201
8000.0	757.0	3.7	-19	66.8	950.1	649.0	227.7	8.8	1.000206
8500.0	743.0	2.4	-24	70.9	937.0	647.5	233.0	10.7	1.000204
9000.0	729.2	1.0	-28	75.8	924.1	645.9	237.1	13.1	1.000201
9500.0	715.4	-04	-32	81.5	911.4	644.2	242.7	15.2	1.000208
10000.0	702.0	-10	-36	87.2	898.9	642.6	247.2	17.3	1.000204
10500.0	688.8	-20	-44	89.4	885.3	641.5	251.7	20.3	1.000200
11000.0	675.4	-30	-51	91.0	871.7	640.0	254.9	23.5	1.000210
11500.0	662.5	-40	-59	92.7	858.3	638.6	258.0	26.1	1.000212
12000.0	649.8	-50	-67	94.3	845.2	637.6	258.8	28.3	1.000208
12500.0	637.3	-60	-74	95.9	832.2	636.5	257.5	29.6	1.000204
13000.0	625.1	-70	-82	97.5	819.4	635.1	250.1	30.8	1.000200
13500.0	613.0	-80	-89	98.9	807.4	633.6	252.9	31.2	1.000197
14000.0	601.1	-70	-18	44.2	786.9	634.7	248.5	31.2	1.000164
14500.0	589.5	-9.0	-17	49.5	776.6	633.5	248.5	32.1	1.000161
15000.0	578.0	-9.8	-18	47.2	764.0	632.4	248.6	30.8	1.000178
15500.0	566.7	-10.6	-21	41.8	751.3	631.5	253.0	28.5	1.000174
16000.0	555.8	-11.5	-22	39.9	739.3	630.5	260.0	26.3	1.000170
16500.0	544.7	-12.7	-22	42.0	727.9	629.0	262.7	26.6	1.000168
17000.0	533.9	-13.7	-22	45.9	716.2	627.8	262.0	28.8	1.000165
17500.0	523.3	-14.6	-22	49.9	704.7	626.8	260.5	30.9	1.000163
18000.0	512.9	-15.7	-23	49.9	693.4	625.5	258.5	33.0	1.000160
18500.0	502.6	-16.7	-25	48.4	682.4	624.0	257.0	34.0	1.000167
19000.0	492.5	-17.7	-26	46.0	671.3	622.6	257.5	34.4	1.000154
19500.0	482.6	-18.7	-28	43.5	660.3	621.6	250.9	34.6	1.000151
20000.0	472.8	-19.7	-29	40.7	649.5	620.4	256.4	35.1	1.000148
20500.0	463.2	-20.6	-31	38.0	638.9	619.2	250.7	35.5	1.000145
21000.0	453.8	-21.9	-31	41.5	629.0	617.8	253.5	36.1	1.000143
21500.0	444.3	-23.3	-31	48.5	619.5	615.9	260.5	36.9	1.000141
22000.0	435.3	-24.7	-31	55.8	610.3	614.1	263.1	38.0	1.000139
22500.0	426.3	-26.2	-31	63.8	601.2	612.5	264.5	40.3	1.000137
23000.0	417.4	-27.7	-31	71.8	592.3	610.4	264.1	43.7	1.000135
23500.0	408.7	-29.1	-31	77.7	583.2	608.7	263.0	45.6	1.000133

STATION ALTITUDE 4047.27 FEET MSL  
 19 FEB. 60 1400 HRS MST  
 ASCEN/STUN. NO. 10

UPPER AIR DATA  
 0440180010  
 LC-37

GEODETIC COORDINATES  
 32.41141 LAT N  
 106.30052 LONG W

TABLE 6 (CONT)

GEOMETRIC ALTITUDE MSL FEET	PRESSURE MILLIBARS	AIR TEMPERATURE DEGREES CENTIGRADE	REL. HUM. PERCENT	DENSITY GM/CUBIC METER	SPEED OF SOUND KNOTS	WIND DIRECTION DEGREES (T)	WIND SPEED KNOTS	INDEX OF REFRACTION
24000.0	400.1	-29.4	64.2	571.6	600.3	201.8	47.5	1.000124
24500.0	391.7	-30.5	57.0	562.1	600.9	202.3	45.6	1.000127
25000.0	383.5	-31.9	55.8	553.5	605.1	203.1	43.9	1.000125
25500.0	375.1	-33.2	50.8	544.5	603.5	204.0	43.2	1.000123
26000.0	367.0	-34.6	45.9	535.0	601.0	200.2	42.8	1.000120
26500.0	359.1	-35.9	40.9	527.2	600.1	207.0	42.9	1.000118
27000.0	351.4	-37.2	35.9	516.7	598.5	203.0	42.0	1.000116
27500.0	343.7	-38.5	35.3	510.4	590.7	270.0	41.9	1.000114
28000.0	336.2	-39.9	37.5	502.1	593.0	203.6	42.4	1.000112
28500.0	328.8	-41.3	36.3**	494.0	593.2	207.2	43.3	1.000110
29000.0	321.4	-42.7	27.4**	485.9	591.4	203.9	44.7	1.000108
29500.0	314.2	-44.1	18.4**	477.9	589.0	204.2	45.7	1.000107
30000.0	307.2	-45.5	9.4**	470.0	587.9	201.7	46.3	1.000105
30500.0	300.3	-46.8	5.5**	462.3	586.1	234.4	46.2	1.000103
31000.0	293.5	-48.0		454.1	584.5	237.2	45.7	1.000101
31500.0	286.7	-49.3		446.1	582.9	233.4	45.7	1.000099
32000.0	280.1	-50.5		438.2	581.4			1.000098
32500.0	273.7	-51.7		430.5	579.8			1.000096
33000.0	267.4	-52.9		422.9	578.2			1.000094

\*\* AT LEAST ONE ASSUMED RELATIVE HUMIDITY VALUE WAS USED IN THE INTERPOLATION.

STATION ALTITUDE 4047.27 FEET MSL  
 13 FEB. 68  
 ASCENSION NO. 10

MANDATORY LEVELS  
 04401A0010  
 LC-37

GEOGRAPHIC COORDINATES  
 32.41141 LAT DEG  
 106.30852 LON DEG

TABLE 7

PRESSURE GEOPOTENTIAL		TEMPERATURE		REL. HUMID. PERCENT	WIND DATA	
MILLIBARS	FEET	AIR DEGREES CENTIGRADE	DEWPOINT DEGREES CENTIGRADE		DIRECTION DEGREES(TW)	SPEED KNOTS
850.0	4860.	12.5	0.3	43.	233.6	6.2
800.0	6514.	7.6	-1.0	35.	215.7	6.8
750.0	8246.	3.0	-2.1	09.	230.1	9.5
700.0	10065.	-2.0	-3.7	66.	247.8	17.7
650.0	11987.	-5.9	-6.6	94.	256.8	26.3
600.0	14032.	-8.0	-17.9	45.	246.1	31.3
550.0	16234.	-12.1	-22.6	41.	263.2	25.5
500.0	18604.	-17.0	-25.4	40.	257.3	34.1
450.0	21173.	-22.5	-31.3	44.	256.7	36.4
400.0	23966.	-29.4	-34.0	54.	261.8	47.5
350.0	27044.	-37.4	-47.1	35.	269.2	42.5
300.0	30466.	-46.9			259.4	40.2

\*\* AT LEAST ONE ASSUMED RELATIVE HUMIDITY VALUE WAS USED IN THE INTERPOLATION.

STATION ALTITUDE 4047.27 FEET MSL  
 13 FEB. 68 1600 HRS MST  
 ASCENSION NO. 11

SIGNIFICANT LEVEL DATA  
 U440120011  
 LC-37

GEOMETRIC COORDINATES  
 52.41141 LAT DEG  
 106.50452 LON DEG

TABLE 8

PRESSURE MILLIBARS	GEOMETRIC ALTITUDE MSL FEET	TEMPERATURE AIR DEGREES CENTIGRADE	TEMPERATURE DEWPOINT PERCENT	REL. HUM. PERCENT
874.8	4047.3	17.3	1.7	55.0
850.0	4847.6	13.4	.4	41.0
770.2	7535.6	5.6	-2.0	58.0
721.6	9272.9	.6	-1.9	83.0
700.0	10072.2	-1.8	-2.5	95.0
647.2	12110.3	-5.8	-0.7	93.0
629.0	12846.0	-5.6	-13.0	53.0
602.4	13955.4	-7.9	-17.0	48.0
567.8	15457.2	-11.5	-20.3	48.0
542.4	16607.8	-13.1	-17.4	70.0
517.4	17785.6	-15.4	-19.9	68.0
500.0	18631.7	-17.7	-20.7	77.0
485.2	19369.6	-19.2	-20.2	92.0
477.4	19765.7	-20.0	-22.7	79.0
461.8	20573.5	-21.9	-23.0	66.0
431.4	22212.3	-25.1	-30.4	01.0
400.0	24003.6	-29.4	-35.5	55.0
387.8	24723.4	-30.7	-40.5	38.0
374.0	25572.9	-32.6	-43.5	33.0
353.6	26962.8	-36.6	-43.0	47.0
333.6	28180.5	-40.2	-44.5	04.0
327.2	28614.5	-41.4	-45.9	01.0
300.0	30531.8	-46.7	-49.0	70.0
260.4	33573.8	-54.0		
250.0	34434.4	-54.5		
200.0	39165.7	-52.3		
174.8	42023.4	-53.4		

STATION ALTITUDE 4047-27 FEET MSL  
 13 FEB. 60  
 ASLENSION NO. 11

UPPER AIR DATA  
 0440100011  
 LC-37

GEODETTIC COORDINATES  
 32.41141 LAT DEG  
 106.30852 LONG DEG

TABLE 9

GEOMETRIC ALTITUDE MSL FEET	PRESSURE MILLIBARMS	TEMPERATURE		REL. HUM. PERCENT	DENSITY GM/CUBIC METER	SPEED OF SOUND KNOTS	WIND DATA DIRECTION, DEGREES (T), SPEED KNOTS	INDEX OF REFRACTION
		AIR DEGREES CENTIGRADE	DEWPOINT					
4047.3	874.8	17.3	1.7	35.0	1046.1	664.9	210.0	1.000264
4500.0	860.7	15.1	1.0	38.4	1037.2	652.4	215.6	1.000261
5000.0	845.3	13.0	.4	42.0	1028.3	639.9	220.0	1.000258
5500.0	829.9	11.5	.0	45.1	1012.8	630.2	222.9	1.000254
6000.0	814.8	10.1	-.4	48.3	999.5	620.5	225.1	1.000251
6500.0	800.0	8.6	-.3	51.5	986.5	614.6	229.1	1.000247
7000.0	785.3	7.2	-1.4	54.6	973.0	611.1	234.2	1.000244
7500.0	771.2	5.7	-2.0	57.8	961.0	611.4	238.4	1.000240
8000.0	756.9	4.3	-1.8	64.7	947.9	609.7	242.8	1.000236
8500.0	742.8	2.8	-1.7	71.9	935.1	608.1	245.9	1.000235
9000.0	729.0	1.4	-1.0	79.1	922.5	606.4	246.6	1.000232
9500.0	715.4	-.1	-2.1	86.4	910.1	604.7	248.5	1.000229
10000.0	701.9	-1.6	-2.4	93.9	897.9	602.9	248.0	1.000226
10500.0	688.6	-2.6	-3.4	94.6	884.4	601.6	245.5	1.000222
11000.0	675.3	-3.6	-4.4	94.1	870.9	600.4	244.0	1.000217
11500.0	662.0	-4.6	-5.5	93.6	857.5	600.2	243.5	1.000212
12000.0	650.0	-5.6	-6.5	93.1	844.4	600.9	238.9	1.000208
12500.0	637.3	-6.7	-9.3	71.8	828.9	600.7	235.2	1.000200
13000.0	625.2	-7.9	-14.1	52.3	814.1	600.2	233.5	1.000192
13500.0	613.2	-9.0	-15.5	50.1	801.0	600.0	230.7	1.000188
14000.0	601.3	-10.0	-17.1	48.0	789.3	600.7	241.5	1.000184
14500.0	589.6	-11.2	-19.2	44.0	777.5	600.2	245.8	1.000181
15000.0	578.1	-12.4	-19.3	40.0	765.8	601.8	250.1	1.000174
15500.0	566.8	-13.6	-20.1	48.8	754.2	600.4	254.5	1.000175
16000.0	555.7	-14.8	-19.7	58.4	741.5	600.9	257.8	1.000173
16500.0	544.7	-16.0	-17.5	67.9	728.5	600.8	257.5	1.000171
17000.0	533.9	-17.2	-19.2	69.3	716.7	600.6	250.9	1.000168
17500.0	523.4	-18.4	-19.5	68.5	705.1	600.4	255.9	1.000165
18000.0	512.9	-19.6	-20.1	70.3	694.2	600.0	258.5	1.000162
18500.0	502.7	-17.3	-20.6	75.6	683.9	600.4	257.0	1.000159
19000.0	492.8	-18.4	-20.4	84.5	673.1	602.0	257.0	1.000157
19500.0	482.8	-19.5	-21.0	87.7	662.1	600.8	257.5	1.000154
20000.0	472.8	-20.6	-22.9	81.0	651.6	619.4	250.0	1.000151
20500.0	463.2	-21.7	-23.3	85.4	641.3	618.0	255.0	1.000148
21000.0	453.7	-22.7	-25.3	79.5	630.7	618.7	253.5	1.000145
21500.0	444.4	-23.7	-27.3	71.9	620.2	615.5	251.2	1.000142
22000.0	435.2	-24.7	-28.5	64.2	609.9	614.2	248.4	1.000139
22500.0	426.2	-25.8	-31.2	60.0	600.0	612.8	245.5	1.000136
23000.0	417.3	-27.0	-32.6	58.4	590.4	611.3	240.1	1.000134
23500.0	408.6	-28.2	-34.1	56.7	580.9	609.8	247.9	1.000132

STATION ALTITUDE 4047-27 FEET MSL  
 15 FEB. 60 1600 HRS MST  
 ACQUISITION NO. 11

UPPER AIR DATA  
 044010011  
 LC-37

GEODETIC COORDINATES  
 52.41141 LAT LEG  
 106.30452 LONG DEG

TABLE 9 (CONT)

GEOMETRIC ALTITUDE MSL FEET	PRESSURE MILLIBARS	TEMPERATURE		REL. HUM. PERCENT	DENSITY GM/CUBIC METER	SPEED OF SOUND KNOTS	WIND DIRECTION DEGREES (T)	WIND SPEED KNOTS	INDEX OF REFRACTION
		AIR DEGREES	TEMPOIT CENTIGRADE						
24000.0	400.1	-29.4	-35.3	55.0	571.0	608.3	250.0	37.9	1.000129
24500.0	391.0	-30.3	-38.7	43.4	561.6	607.2	252.3	40.0	1.000126
25000.0	383.3	-31.3	-41.3	36.4	552.1	605.9	253.1	42.5	1.000124
25500.0	375.2	-32.4	-43.1	33.4	542.9	604.5	253.0	44.3	1.000122
26000.0	367.1	-33.9	-43.3	37.6	534.5	602.0	253.2	46.3	1.000120
26500.0	359.2	-35.3	-43.0	43.1	526.4	600.0	251.9	48.3	1.000118
27000.0	351.3	-37.0	-43.0	48.8	518.3	598.7	251.0	49.5	1.000116
27500.0	343.8	-38.3	-43.3	55.2	510.0	597.0	250.0	50.2	1.000114
28000.0	336.3	-39.7	-44.2	61.7	501.7	595.3	251.0	49.0	1.000113
28500.0	328.9	-41.1	-45.5	61.8	493.6	593.5	251.0	48.5	1.000111
29000.0	321.3	-42.3	-46.7	62.8	485.5	591.7	251.0	48.7	1.000109
29500.0	314.3	-43.8	-47.7	65.2	477.5	590.0	251.0	49.0	1.000107
30000.0	307.3	-45.2	-48.7	67.3	469.7	588.2	251.9	49.3	1.000105
30500.0	300.4	-46.6	-49.7	69.9	462.0	586.4	252.5	49.1	1.000103
31000.0	293.3	-47.8	-52.1	59.2**	453.8	584.8	253.2	48.9	1.000101
31500.0	286.0	-49.0	-55.2	47.7**	445.7	583.2	253.5	46.5	1.000100
32000.0	280.2	-50.2	-58.5	36.2**	437.6	581.7	253.9	43.9	1.000098
32500.0	273.7	-51.4	-62.5	24.7**	430.1	580.1	251.8	43.0	1.000096
33000.0	267.4	-52.6	-67.1	13.2**	422.5	578.5	249.0	44.2	1.000094
33500.0	261.3	-53.8	-62.1	1.7**	415.0	577.0	247.3	46.8	1.000092
34000.0	255.2	-54.2	-62.1		408.1	576.4	249.7	49.4	1.000090
34500.0	249.2	-54.3			397.0	576.1	252.3	52.2	1.000088
35000.0	243.4	-54.2			387.4	576.4	254.0	55.2	1.000086
35500.0	237.7	-54.0			377.9	576.7	257.3	58.8	1.000084
36000.0	232.2	-53.8			368.7	577.0	259.1	62.5	1.000082
36500.0	226.8	-53.3			359.6	577.3	257.0	66.1	1.000080
37000.0	221.3	-53.3			351.0	577.6	250.4	69.4	1.000078
37500.0	216.3	-53.1			342.3	577.9	254.3	71.6	1.000076
38000.0	211.3	-52.8			334.1	578.2	253.0	73.1	1.000074
38500.0	206.4	-52.6			326.0	578.5	252.8	73.4	1.000073
39000.0	201.6	-52.4			318.1	578.9	252.4	74.3	1.000071
39500.0	196.9	-52.4			310.7	578.8	251.0	75.7	1.000069
40000.0	192.3	-52.0			303.8	578.5	251.4	75.7	1.000068
40500.0	187.8	-52.8			297.0	578.3			1.000066
41000.0	183.3	-53.0			290.3	578.0			1.000065
41500.0	179.2	-53.2			283.8	577.8			1.000063
42000.0	175.0	-53.4			277.5	577.5			1.000062

\*\* AT LEAST ONE ASSUMED RELATIVE HUMIDITY VALUE WAS USED IN THE INTERPOLATION.

STATION ALTITUDE 4047.27 FEET MSL  
 13 FEB. 68 1600 PMS MST  
 ASCENSION NO. 11

MANDATORY LEVELS  
 0440100011  
 LC-57

GEODETIC COORDINATES  
 32.41141 LAT DEG  
 106.30852 LON DEG

TABLE 10

PRESSURE MILLIBARS	GEOPOTENTIAL FEET	TEMPERATURE		REL. HUM. PERCENT	WIND DATA	
		AIR DEGREES CENTIGRADE	DEWPOINT CENTIGRADE		DIRECTION DEGREES(TN)	SPEED KNOTS
850.0	4844.	13.4	04	41.	218.9	6.9
800.0	6504.	6.6	-0.6	51.	229.2	10.4
750.0	8240.	3.6	-1.7	68.	245.4	10.2
700.0	10062.	-1.8	-2.5	95.	245.9	13.8
650.0	11980.	-5.6	-6.5	53.	239.0	24.7
600.0	14041.	-8.1	-17.2	46.	241.8	20.7
550.0	16238.	-12.6	-18.1	63.	257.7	20.5
500.0	18606.	-17.7	-20.7	77.	258.1	33.6
450.0	21167.	-23.1	-28.1	70.	252.0	30.2
400.0	23964.	-29.4	-35.5	55.	250.0	37.8
350.0	27047.	-37.2	-43.0	50.	251.8	49.7
300.0	30472.	-46.7	-49.8	70.	252.5	49.1
250.0	34351.	-54.5			251.9	51.7
200.0	39073.	-52.3			252.2	74.7
175.0	41900.	-53.4				