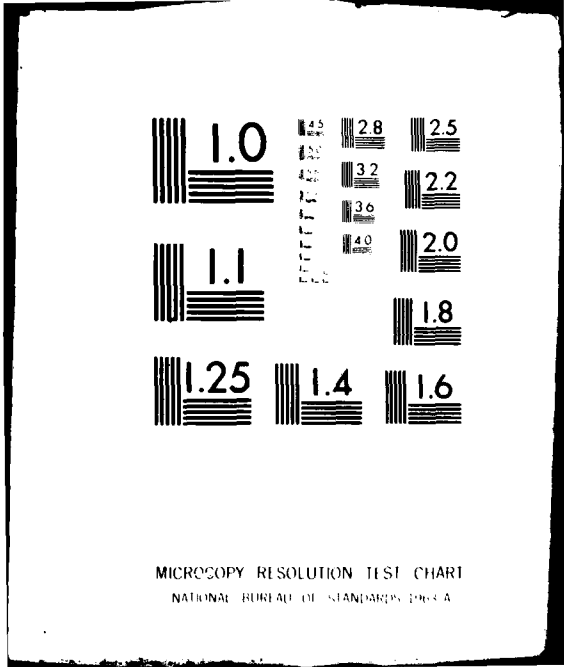


AD-A087 466 ARMY ELECTRONICS RESEARCH AND DEVELOPMENT COMMAND WS--ETC F/G 4/2  
193098 MLRS, MISSILE NUMBER 1100, ROUND NUMBER V-120, 13 FEBRUA--ETC(U)  
FEB 80  
UNCLASSIFIED ERADCOM/ASL-DR-1135 NL

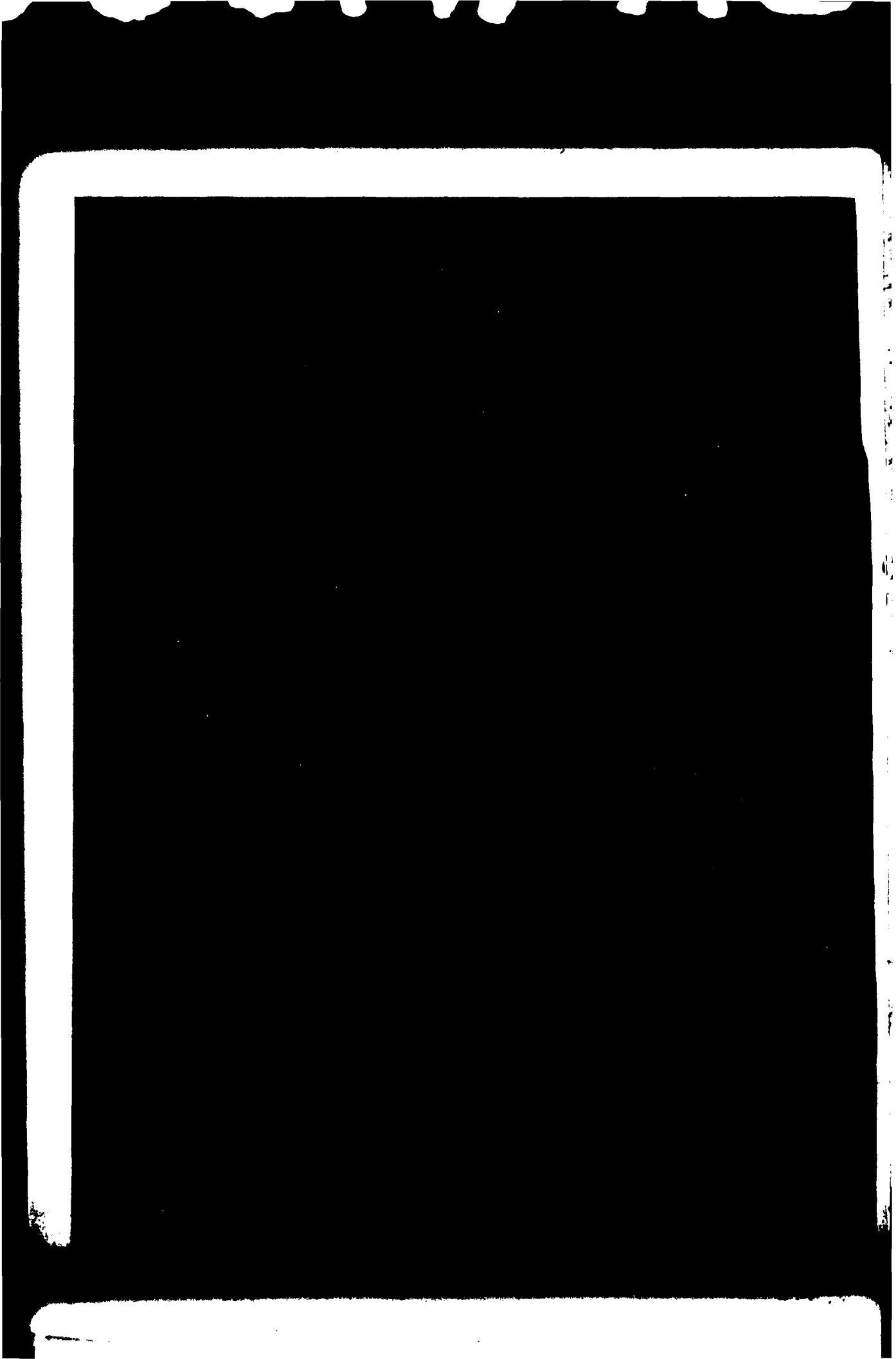




MICROCOPY RESOLUTION TEST CHART  
NATIONAL BUREAU OF STANDARDS 1963-A

ADA087466

80 8 4 262



## **DISCLAIMER NOTICE**

**THIS DOCUMENT IS BEST QUALITY PRACTICABLE. THE COPY FURNISHED TO DTIC CONTAINED A SIGNIFICANT NUMBER OF PAGES WHICH DO NOT REPRODUCE LEGIBLY.**

UNCLASSIFIED

14

ERADCOM/ASL-DR-1135

SECURITY CLASSIFICATION OF THIS PAGE (When Data Entered)

REPORT DOCUMENTATION PAGE		READ INSTRUCTIONS BEFORE COMPLETING FORM
1. REPORT NUMBER DR 1135	2. GOVT ACCESSION NO. AD-A087466	3. RECIPIENT'S CATALOG NUMBER
4. AUTHOR (Last, First, Middle) 19309B MLRS, Missile Number 1100 Round Number V-120 13 February 1980.	5. TITLE OF REPORT & PERIOD COVERED 9) Meteorological data rept.	6. PERFORMING ORG. REPORT NUMBER
7. AUTHORING ORG. NAME AND ADDRESS White Sands Meteorological Team	8. CONTRACT OR GRANT NUMBER(s) 16 DA Task 1F665702D127-02	9. PERFORMING ORGANIZATION NAME AND ADDRESS 12 18
10. PROGRAM ELEMENT PROJECT, TASK AREA & WORK UNIT NUMBERS 1702	11. CONTROLLING OFFICE NAME AND ADDRESS US Army Electronics Research & Development Cnd Atmospheric Sciences Laboratory White Sands Missile Range, NM 88002	12. REPORT DATE FEB 1980
13. MONITORING AGENCY NAME & ADDRESS (if different from Controlling Office) US Army Electronics Research & Development Cnd Adelphi, MD 20783	14. NUMBER OF PAGES 11	15. SECURITY CLASS. (of this report) UNCLASSIFIED
16. DISTRIBUTION STATEMENT (of this Report) DISTRIBUTION STATEMENT A Approved for public release; Distribution Unlimited		
17. DISTRIBUTION STATEMENT (of the abstract entered in Block 20, if different from Report) Approved for public release; distribution unlimited.		
18. SUPPLEMENTARY NOTES		
19. KEY WORDS (Continue on reverse side if necessary and identify by block number)		
20. ABSTRACT (Continue on reverse side if necessary and identify by block number) Meteorological data gathered for the launching of 19309B MLRS, Missile Number 1100, Round Number V-120 are presented in tabular form.		

gm

CONTENTS

PAGE

INTRODUCTION----- 1

DISCUSSION----- 1

MAP----- 2

TABLES

1. Surface Observation Taken at "C" Station----- 3
2. NICK Pilot Balloon Measured Wind Data at 1500 MST----- 4
3. LC-39 Pilot Balloon Measured Wind Data at 1515 MST----- 5
4. LC-37 Significant Level Data at 1400 MST----- 6
5. LC-37 Upper Air Data at 1400 MST----- 7
6. LC-37 Mandatory Levels at 1400 MST----- 9
7. LC-37 Significant Level Data at 1600 MST----- 10
8. LC-37 Upper Air Data at 1600 MST ----- 11
9. LC-37 Mandatory Levels at 1600 MST----- 13

Accession For	
NTIS GRA&I	<input checked="" type="checkbox"/>
DDC TAB	<input type="checkbox"/>
Unannounced	<input type="checkbox"/>
Justification	
By _____	
Distribution/	
Availability Codes	
Dist.	Avail and/or special
A	23 9



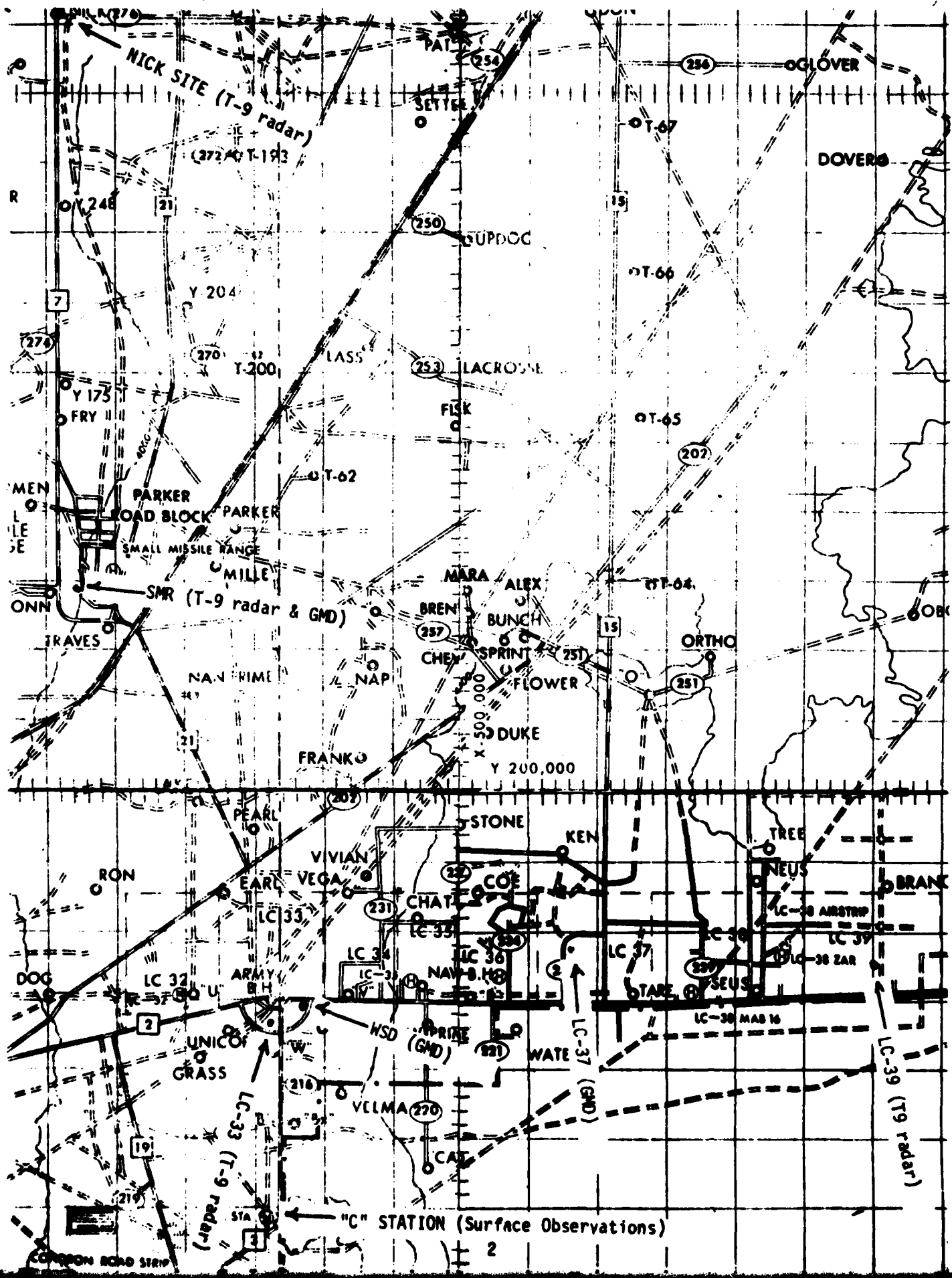


TABLE 1

SURFACE OBSERVATIONS OBTAINED FROM "C" STATION ON

13 February 1980

TIME MST	SKY CONDITIONS	PVI G VSBY	WEATHER AND OBSTRUCTION TO VISION	SEA PRESS IN HG	TEMP F	DEW POINT	DRY BULB	SPEED
0058	120SCT250SCT	20		25.950	24	29	160	10
0158	120SCTE250BKN	20		25.950	32	27	E100	06
0258	120SCT250SCT	20		25.950	34	29	010	05
0358	120SCT250SCT	20		25.930	32	25	E130	07
0458	120SCT250SCT	20		25.940	30	26	E100	03
0558	120SCTE250BKN	20		25.940	31	25	010	03
0658	60SCT120SCTE250BKN	30		25.960	32	24	020	03
0758	E60BKN120BKN250BKN	50		25.990	34	30	340	03
0858	E60BKN120BKN	50		25.995	41	33	090	04
0958	60SCTE120BKN250BKN	50		26.005	49	34	340	03
1058	120SCT250SCT	50		25.990	55	37	360	05
1158	65SCT120SCT250SCT	50		25.960	60	38	150	04
1258	65SCT120SCTE250BKN	50		25.935	60	37	270	04
1358	65SCT120SCTE250BKN	50		25.900	65	38	210	08
1458	65SCTE120BKN250BKN	50		25.885	66	36	210	08
1558	65SCTE120BKN250BKN	50		25.830	65	37	210	08
1658	65SCTE120BKN250BKN	50		25.880	62	36	200	08
1758	E120BKN250BKN	30		25.890	57	38	150	07
1858	E120BKN250BKN	20		25.905	56	37	160	06
1958	E1200VC	20		25.920	55	42	340	04
2058	E1200VC	20	L-	25.935	53	44	110	05
2158	E1200VC	20	L-	25.935	51	44	E120	05
2258	E1200VC	20		25.925	53	43	E120	05
2358	E600VC	20	RW-	25.925	52	45	150	08





GEODETIC COORDINATES  
 32.41141 LAT DEG  
 106.30852 LONG DEG

SIGNIFICANT LEVEL DATA  
 0440180010  
 LC-37

STATION ALTITUDE 4047.27 FEET MSL  
 19 FEB. 80 1400 HRS MST  
 ASCENSION NO. 10

TABLE 4

PRESSURE MILLIBARS	GEOMETRIC ALTITUDE MSL FEET	TEMPERATURE		R.L. HUM. PERCENT
		AIR DEGREES	DEWPOINT CENTIGRADE	
875.4	4047.3	17.7	.4	51.0
869.0	4252.0	14.5	.7	59.0
850.0	4863.2	12.5	.5	43.0
798.2	6587.3	7.4	-1.0	55.0
756.0	8753.8	1.7	-2.0	73.0
700.0	10074.6	-2.0	-5.7	88.0
621.8	15137.9	-8.2	-8.5	98.0
612.6	13513.1	-8.9	-19.7	41.0
603.6	13987.4	-7.7	-18.1	43.0
586.2	14641.8	-9.3	-17.5	51.0
568.8	15764.5	-11.0	-24.2	59.0
544.4	16511.8	-12.7	-22.9	42.0
520.4	17633.7	-14.9	-24.7	51.0
500.0	18630.0	-17.0	-25.4	48.0
459.8	20682.9	-21.0	-31.0	37.0
438.6	21822.7	-24.2	-31.0	53.0
409.5	23454.0	-29.1	-31.0	79.0
400.0	24005.8	-29.4	-34.0	64.0
391.6	24503.4	-30.5	-30.2	57.0
385.4	24975.9	-31.6	-37.2	57.0
348.4	27190.5	-37.7	-47.7	54.0
331.0	28351.5	-40.9	-47.4	59.0
300.0	30525.2	-46.9		
266.8	33049.8	-53.0		

STATION ALTITUDE 4047.27 FEET MSL  
 13 FEB. 60  
 ASCENSION NO. 10

UPPER AIR DATA  
 0440160010  
 LC-37

GEOMETRIC COORDINATES  
 32.41141 LAT DEG  
 106.50852 LONG DEG

TABLE 5

GEOMETRIC ALTITUDE MSL FEET	PRESSURE MILLIBARS	TEMPERATURE		REL. HUM. PERCENT	DENSITY GM/CM <sup>3</sup> METER	SPEED OF SOUND KNOTS	WIND DATA DIRECTION DEGREES (TYP)	WIND DATA SPEED KNOTS	INDEX OF REFRACTION
		AIR DEGREES	DEWPOINT CENTIGRADE						
4047.3	875.4	17.7	.4	31.0	1045.7	615.3	300.0	1.0	1.000201
4500.0	861.2	13.7	.6	40.6	1043.1	610.7	249.5	1.4	1.000202
5000.0	845.8	12.1	.2	44.0	1038.0	609.9	230.1	2.5	1.000203
5500.0	830.4	10.6	-.1	47.5	1031.7	607.2	222.0	3.7	1.000205
6000.0	815.3	9.1	-.5	50.9	1023.5	605.4	218.2	5.1	1.000202
6500.0	800.6	7.6	-1.0	54.4	990.5	603.7	215.5	6.6	1.000246
7000.0	785.8	6.3	-1.2	58.5	976.9	602.1	219.7	7.5	1.000205
7500.0	771.3	5.0	-1.5	62.6	963.4	600.6	223.7	8.2	1.000201
8000.0	757.0	3.7	-1.9	66.8	950.1	609.0	227.7	8.8	1.000258
8500.0	743.0	2.4	-2.4	70.9	937.0	647.3	233.0	10.7	1.000204
9000.0	729.2	1.0	-2.6	75.8	924.1	645.9	237.1	13.1	1.000201
9500.0	715.4	-.4	-3.2	81.5	911.4	644.2	242.7	15.2	1.000200
10000.0	702.0	-1.8	-3.6	87.2	898.9	642.6	247.2	17.3	1.000224
10500.0	688.8	-2.9	-4.4	89.4	885.3	641.3	251.7	20.3	1.000220
11000.0	675.4	-3.9	-5.1	91.0	871.7	640.0	254.9	23.5	1.000210
11500.0	662.5	-4.9	-5.9	92.7	858.3	638.8	258.0	26.1	1.000212
12000.0	649.8	-5.9	-6.7	94.3	845.2	637.6	260.8	28.3	1.000203
12500.0	637.3	-6.9	-7.4	95.9	832.2	636.3	263.5	29.6	1.000214
13000.0	625.1	-7.9	-8.2	97.5	819.4	635.1	266.1	30.7	1.000210
13500.0	613.0	-8.9	-8.9	98.7	807.4	633.8	268.9	31.2	1.000167
14000.0	601.1	-9.9	-10.0	99.2	795.9	634.7	243.3	31.2	1.000164
14500.0	589.5	-9.0	-17.0	49.5	776.6	633.3	248.0	32.1	1.000170
15000.0	578.0	-9.8	-14.3	47.2	764.0	632.4	243.0	30.8	1.000170
15500.0	566.7	-10.6	-21.0	41.8	751.3	631.3	253.0	28.5	1.000170
16000.0	555.0	-11.3	-22.4	39.9	739.3	630.3	260.0	26.3	1.000170
16500.0	544.7	-12.7	-22.0	42.0	727.9	629.0	262.7	26.6	1.000169
17000.0	533.9	-13.7	-22.3	45.9	716.2	627.8	262.0	25.8	1.000165
17500.0	523.3	-14.6	-22.7	49.9	704.7	626.6	260.3	20.0	1.000163
18000.0	512.9	-15.7	-23.7	44.9	693.4	625.3	258.3	33.0	1.000160
18500.0	502.8	-16.7	-25.0	48.4	682.4	624.0	237.0	34.0	1.000167
19000.0	492.3	-17.7	-26.5	46.0	671.3	622.8	237.3	34.4	1.000154
19500.0	482.8	-18.7	-28.6	43.3	660.3	621.6	250.9	34.6	1.000151
20000.0	472.8	-19.7	-29.6	40.7	649.5	620.4	250.0	35.1	1.000149
20500.0	463.2	-20.6	-31.2	38.0	638.9	619.2	250.7	35.5	1.000145
21000.0	453.8	-21.9	-31.4	41.5	629.0	617.8	253.3	36.1	1.000143
21500.0	444.3	-23.3	-31.1	48.5	619.5	615.9	260.3	36.6	1.000141
22000.0	435.3	-24.7	-31.7	55.8	610.3	614.1	263.1	38.0	1.000139
22500.0	426.3	-26.2	-31.0	63.8	601.2	612.3	264.3	40.3	1.000127
23000.0	417.4	-27.7	-31.2	71.8	592.3	610.4	264.1	43.7	1.000135
23500.0	408.7	-29.1	-31.4	77.7	583.2	608.7	263.0	45.0	1.000133

STATION ALTITUDE 4047.27 FEET MSL  
 15 FEB. 60 1400 HRS MST  
 ASCENSION NO. 10

UPPER AIR DATA  
 0440180010  
 LC-37

GEODETTIC COORDINATES  
 32.41141 LAT 11G  
 100.30052 LONG 11G

TABLE 5 (CONT)

GEOMETRIC ALTITUDE MSL FEET	PRESSURE MILLIBARS	TEMPERATURE AIR DEGREES CELSIUS	TEMPERATURE DEGREES CENTIGRADE	REL. HUM. PERCENT	DENSITY GRAMS PER CUBIC METER	SPEED OF SOUND KNOTS	WIND DATA DIRECTION, DEGREES (T)	SPEED KNOTS	INDEX OF REFRACTION
24000.0	400.1	-29.4	-34.0	64.2	571.6	600.3	201.0	47.5	1.000124
24500.0	391.7	-30.5	-36.2	57.0	562.1	600.9	202.3	45.6	1.000127
25000.0	383.5	-31.9	-37.4	55.8	553.5	605.1	203.1	43.9	1.000125
25500.0	375.1	-33.2	-39.3	50.8	544.5	603.5	204.0	43.2	1.000123
26000.0	367.0	-34.6	-42.1	45.9	535.0	601.0	200.2	42.6	1.000120
26500.0	359.1	-35.9	-44.3	40.9	527.2	600.1	207.0	42.9	1.000118
27000.0	351.4	-37.2	-46.7	35.9	518.7	598.5	203.0	42.6	1.000116
27500.0	343.7	-38.5	-48.1	35.3	510.4	590.7	270.0	41.9	1.000114
28000.0	336.2	-39.9	-48.5	37.5	502.1	592.0	208.6	42.4	1.000112
28500.0	328.6	-41.3	-50.4	36.3**	494.0	593.2	207.2	43.3	1.000110
29000.0	321.4	-42.7	-54.0	27.4**	485.9	591.4	203.9	44.7	1.000108
29500.0	314.2	-44.1	-58.4	18.4**	477.9	589.0	204.2	45.7	1.000107
30000.0	307.2	-45.5	-64.6	9.4**	470.0	587.9	201.7	46.3	1.000105
30500.0	300.5	-46.8	-85.0	.5**	462.3	586.1	257.4	46.2	1.000103
31000.0	293.5	-48.0			454.1	584.5	257.2	45.7	1.000101
31500.0	286.7	-49.3			446.1	582.9	255.4	45.5	1.000099
32000.0	280.1	-50.5			438.2	581.4			1.000098
32500.0	273.7	-51.7			430.5	579.8			1.000096
33000.0	267.4	-52.9			422.9	578.2			1.000094

\*\* AT LEAST ONE ASSUMED RELATIVE HUMIDITY VALUE WAS USED IN THE INTERPOLATION.

STATION ALTITUDE 4047.27 FEET MSL  
 13 FEB. 60  
 ASCENSION NO. 10

MANDATORY LEVELS  
 0440160010  
 LC-37

GEODETIC COORDINATES  
 32.41141 LAT DEG  
 106.30852 LON DEG

TABLE 6

PRESSURE GEOPOTENTIAL		TEMPERATURE		REL. HUMID.		WIND DATA	
MILLIBARS	FEET	AIR DEGREES CENTIGRADE	DEWPOINT DEGREES CENTIGRADE	PERCENT	DIRECTION DEGREES(TH)	SPEED KNOTS	
850.0	4860.	12.5	0.3	43.	233.6	6.2	
800.0	6514.	7.6	-1.0	55.	215.7	6.8	
750.0	8246.	3.0	-2.1	59.	230.1	9.5	
700.0	10065.	-2.0	-3.7	60.	247.8	17.7	
650.0	11987.	-5.9	-6.6	54.	256.8	26.3	
600.0	14032.	-8.0	-17.9	45.	246.1	51.3	
550.0	16234.	-12.1	-22.6	41.	263.2	25.5	
500.0	18604.	-17.0	-25.4	46.	257.3	34.1	
450.0	21173.	-22.5	-31.3	44.	256.7	36.4	
400.0	23966.	-29.4	-34.0	64.	261.8	47.5	
350.0	27044.	-37.4	-47.1	55.	269.2	42.5	
300.0	30466.	-46.9			259.4	40.2	

\*\* AT LEAST ONE ASSUMED RELATIVE HUMIDITY VALUE WAS USED IN THE INTERPOLATION.

STATION ALTITUDE 4047.27 FEET MSL  
 15 FEB. 80 1600 HRS MSL  
 ASCENSION NO. 11

SIGNIFICANT LEVEL DATA  
 0440120011  
 LC-37

GEODETTIC COORDINATES  
 32.41141 LAT DEG  
 106.30452 LON DEG

TABLE 7

PRESSURE MILLIBARS	GEO-ETHIC ALTITUDE MSL FEET	TEMPERATURE AIR DEGREES CENTIGRADE	REL. HUM. PERCENT
674.8	4047.3	17.3	35.0
850.0	4847.6	13.4	41.0
770.2	7535.6	5.6	58.0
721.6	9272.9	.6	83.0
700.0	10072.2	-1.8	95.0
647.2	12110.3	-5.6	93.0
629.0	12848.0	-5.6	93.0
602.4	13955.4	-7.9	48.0
567.8	15457.2	-11.5	48.0
542.4	16607.8	-13.1	70.0
517.4	17781.6	-15.4	68.0
500.0	18631.7	-17.7	77.0
485.2	19361.6	-19.2	92.0
477.4	19765.7	-20.0	79.0
461.8	20573.5	-21.9	86.0
451.4	22212.3	-25.1	81.0
400.0	24003.6	-29.4	55.0
387.8	24723.9	-30.7	38.0
374.0	25572.9	-32.6	33.0
353.6	26862.8	-36.6	47.0
333.6	28137.5	-40.2	64.0
327.2	28614.5	-41.4	61.0
300.0	30531.8	-46.7	70.0
260.4	33573.8	-54.0	
250.0	34434.4	-54.5	
200.0	39165.7	-52.3	
174.8	42023.4	-53.4	

STATION ALTITUDE 4047.27 FEET MSL  
 13 FEB. 60  
 OBSERVATION NO. 11

UPPER AIR DATA  
 0440180011  
 LC-37

GEODETIC COORDINATES  
 32.41141 LAT N  
 106.30852 LONG W

TABLE 8

GEOMETRIC ALTITUDE MSL FEET	PRESSURE MILLIBARMS	TEMPERATURE		REL. HUM. PERCENT	DENSITY GM/CUMIC METER	SPEED OF SOUND KNOTS	WIND DATA		INDEX OF REFRACTION
		AIR DEGREES CENTIGRADE	WETBULB DEGREES CENTIGRADE				DIRECTION DEGREES(T)	SPEED KNOTS	
4047.3	674.8	17.5	1.7	35.0	1040.1	604.9	210.0	4.9	1.000264
4500.0	660.7	15.1	1.0	38.4	1037.2	602.4	215.0	6.0	1.000261
5000.0	645.5	13.0	.4	42.0	1026.5	609.9	220.0	7.3	1.000253
5500.0	629.9	11.5	.0	45.1	1012.8	630.2	222.9	8.7	1.000254
6000.0	614.8	10.1	-.4	48.5	999.5	650.5	225.1	10.0	1.000251
6500.0	600.0	8.6	-.3	51.5	986.5	654.6	229.1	10.4	1.000247
7000.0	585.3	7.2	-1.4	54.6	973.0	655.1	234.2	10.5	1.000244
7500.0	571.2	5.7	-2.0	57.8	961.0	651.4	239.4	9.9	1.000240
8000.0	556.9	4.3	-1.5	64.7	947.9	649.7	242.6	8.7	1.000235
8500.0	542.8	2.8	-1.7	71.9	935.1	646.1	245.9	8.4	1.000235
9000.0	528.4	1.4	-1.4	79.1	922.5	646.4	246.6	8.8	1.000232
9500.0	515.4	-.1	-2.1	86.4	910.1	644.7	248.5	10.7	1.000229
10000.0	501.9	-1.6	-2.4	93.9	897.9	642.9	248.0	13.4	1.000229
10500.0	488.6	-2.6	-3.4	98.6	884.4	641.6	245.5	16.5	1.000212
11000.0	475.5	-3.6	-4.4	94.1	870.9	640.4	244.0	19.0	1.000217
11500.0	462.0	-4.6	-5.5	93.6	857.5	639.2	243.5	23.0	1.000212
12000.0	450.0	-5.6	-6.5	95.1	844.4	637.9	238.9	24.7	1.000208
12500.0	437.5	-5.7	-9.3	71.8	829.9	637.7	235.2	25.2	1.000200
13000.0	425.2	-5.9	-10.1	52.5	814.1	637.2	235.5	24.8	1.000172
13500.0	413.2	-7.0	-15.3	50.1	801.0	636.0	230.7	25.4	1.000136
14000.0	401.5	-8.0	-17.1	48.0	789.5	634.7	241.5	26.5	1.000124
14500.0	389.0	-9.2	-18.2	43.0	777.5	633.2	245.0	26.8	1.000121
15000.0	376.1	-10.4	-19.3	44.0	765.0	631.8	259.1	27.1	1.000174
15500.0	366.8	-11.6	-20.1	48.8	754.2	630.4	254.5	27.4	1.000175
16000.0	355.7	-12.5	-19.7	58.4	741.5	629.0	257.0	28.0	1.000175
16500.0	344.7	-13.0	-17.5	67.9	729.5	628.6	257.5	29.0	1.000171
17000.0	333.9	-13.9	-18.2	69.3	716.7	627.6	255.9	29.9	1.000166
17500.0	323.4	-14.8	-19.3	68.5	703.1	626.4	255.9	30.7	1.000165
18000.0	312.9	-16.0	-20.1	70.5	684.2	625.0	250.5	31.6	1.000172
18500.0	302.7	-17.5	-20.6	75.6	683.9	623.4	257.0	33.2	1.000153
19000.0	292.6	-18.4	-20.4	84.5	675.1	622.0	257.0	34.7	1.000157
19500.0	282.6	-19.5	-21.0	87.7	662.1	620.6	257.5	36.1	1.000154
20000.0	272.6	-20.6	-22.9	81.0	651.0	619.4	250.6	36.2	1.000151
20500.0	263.2	-21.7	-23.5	85.4	641.5	618.0	255.6	36.1	1.000168
21000.0	253.7	-22.7	-25.3	79.5	630.7	616.7	253.5	36.2	1.000165
21500.0	244.4	-23.7	-27.3	71.9	620.2	615.5	251.2	36.5	1.000162
22000.0	235.2	-24.7	-28.5	64.2	609.9	614.2	248.4	36.2	1.000157
22500.0	226.2	-25.8	-31.2	60.0	600.0	612.3	245.5	36.2	1.000150
23000.0	217.5	-27.0	-32.6	58.4	590.4	611.5	240.1	36.1	1.000134
23500.0	208.6	-28.2	-34.1	56.7	580.9	609.9	247.7	35.9	1.000132

STATION ALTITUDE 4047.27 FEET MSL  
 13 FEB. 60  
 ASCESSION NO. 11

UPPER AIR DATA  
 0400180011  
 LC-37

GEODETIC COORDINATES  
 32.41141 LAT LEG  
 106.30452 LONG LEG

TABLE 8 (CONT)

GEOMETRIC ALTITUDE MSL FEET	PRESSURE MILLIBARS	TEMPERATURE AIR DEGREES CENTIGRADE	REL. HUM. PERCENT	DENSITY GM/CM <sup>3</sup> METER	SPEED OF SOUND KNOTS	INDEX OF REFRACTION,	WIND DATA DIRECTION, SPEED, KNOTS	INDEX OF REFRACTION,
24000.0	400.1	-29.4	55.0	571.0	008.3	1.000129	250.0	37.9
24500.0	391.0	-30.3	43.4	561.0	617.2	1.000120	252.3	40.6
25000.0	383.3	-31.3	36.4	552.1	615.9	1.000124	253.1	42.5
25500.0	375.2	-32.4	33.4	542.9	614.5	1.000122	253.0	44.3
26000.0	367.1	-33.9	37.6	534.5	612.0	1.000120	253.4	46.3
26500.0	359.2	-35.5	43.1	526.4	610.0	1.000118	253.2	48.3
27000.0	351.5	-37.0	48.8	518.3	598.7	1.000116	251.9	49.5
27500.0	343.8	-38.5	55.2	510.0	587.0	1.000114	251.0	50.2
28000.0	336.3	-39.7	61.7	501.7	575.3	1.000113	250.0	49.0
28500.0	328.9	-41.1	61.6	493.0	563.5	1.000111	251.0	48.5
29000.0	321.5	-42.5	62.6	485.5	551.7	1.000109	251.5	48.7
29500.0	314.3	-43.8	65.2	477.5	540.0	1.000107	251.8	49.0
30000.0	307.3	-45.2	67.5	469.7	528.2	1.000105	251.9	49.3
30500.0	300.4	-46.6	69.9	462.0	516.4	1.000103	252.5	49.1
31000.0	293.5	-47.8	59.2**	453.8	504.8	1.000101	253.2	48.9
31500.0	286.8	-49.0	47.7**	445.7	493.2	1.000100	253.5	46.5
32000.0	280.2	-50.2	36.2**	437.6	481.7	1.000098	253.9	43.0
32500.0	273.7	-51.4	24.7**	429.1	470.1	1.000096	251.8	43.8
33000.0	267.4	-52.6	13.2**	422.5	458.5	1.000094	249.0	44.2
33500.0	261.3	-53.8	1.7**	415.0	447.0	1.000092	247.3	46.8
34000.0	255.2	-54.2		406.1	435.4	1.000090	249.7	49.4
34500.0	249.2	-54.5		397.0	423.1	1.000088	252.3	52.2
35000.0	243.4	-54.2		387.4	410.4	1.000086	254.0	55.2
35500.0	237.7	-54.0		377.9	397.7	1.000084	257.3	58.8
36000.0	232.2	-53.8		368.7	385.0	1.000082	259.1	62.5
36500.0	226.8	-53.5		359.0	372.3	1.000080	257.0	60.1
37000.0	221.5	-53.3		351.0	359.6	1.000078	258.4	69.4
37500.0	216.3	-53.1		342.5	347.9	1.000076	254.3	71.6
38000.0	211.3	-52.8		334.1	336.2	1.000074	253.0	73.1
38500.0	206.4	-52.6		326.0	324.5	1.000073	252.0	73.4
39000.0	201.6	-52.4		318.1	312.9	1.000071	252.4	74.3
39500.0	196.9	-52.4		310.7	301.5	1.000069	251.0	75.7
40000.0	192.3	-52.0		303.8	290.5	1.000068	251.4	75.7
40500.0	187.8	-52.0		297.0	279.3	1.000066		
41000.0	183.2	-53.0		290.3	268.0	1.000065		
41500.0	179.2	-53.2		283.8	257.8	1.000063		
42000.0	175.0	-53.4		277.5	247.5	1.000062		

\*\* AT LEAST ONE ASSUMED RELATIVE HUMIDITY VALUE WAS USED IN THE INTERPOLATION.

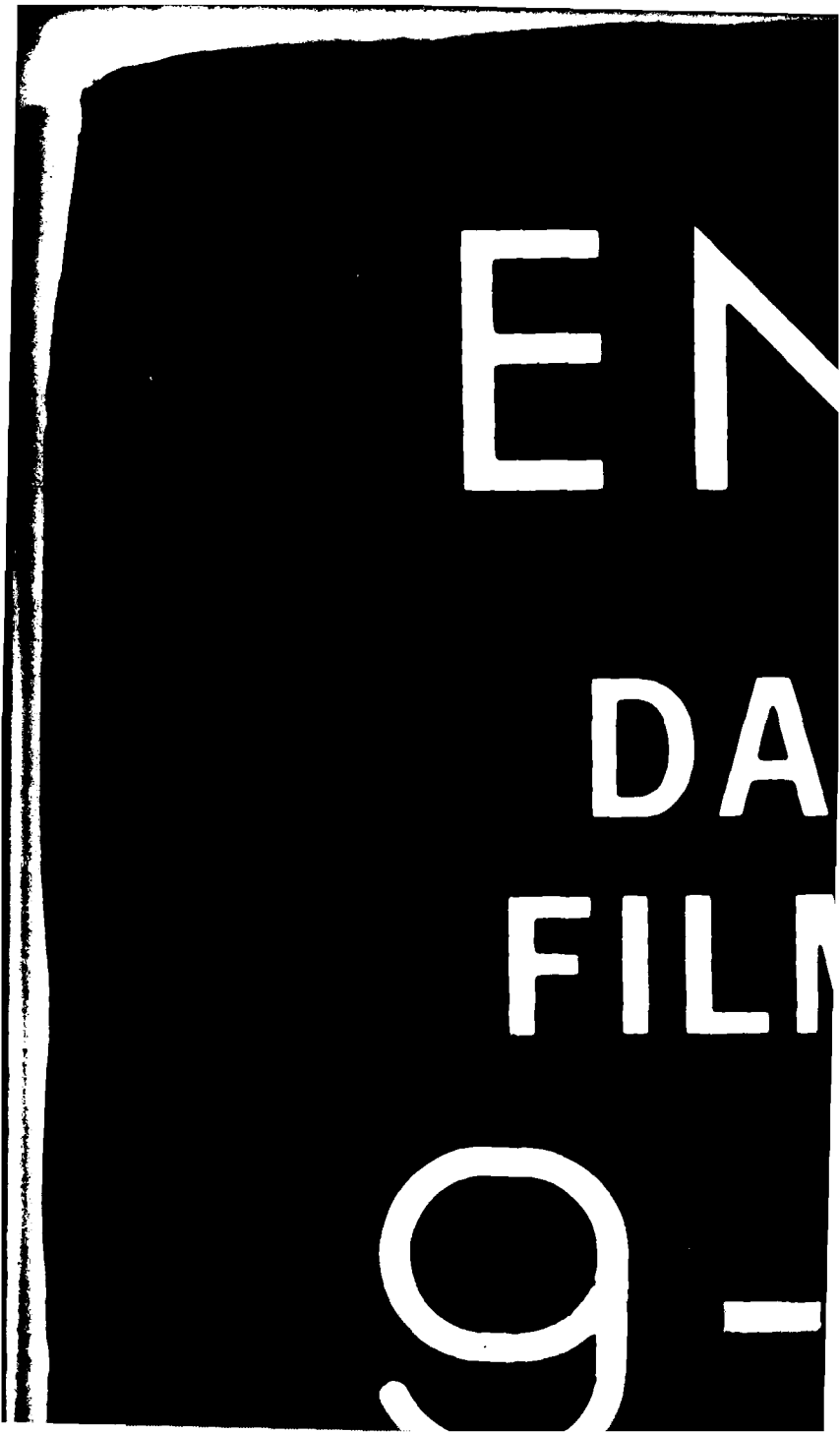
STATION ALTITUDE 4047.27 FEET MSL  
 13 FEB. 60  
 ASCENSION NO. 11

MANDATORY LEVELS  
 0440180011  
 LC-37

GEODETIC COORDINATES  
 32.41141 LAT DEG  
 106.30452 LON DEG

TABLE 9

PRESSURE GEOPOTENTIAL		TEMPERATURE		REL. HUM. PERCENT	WIND DATA	
MILLIBARS	FEET	AIR DEGREES	DEWPOINT CENTIGRADE		DIRECTION DEGREES(TN)	SPEED KNOTS
850.0	4844.	13.4	.4	41.	218.9	6.9
800.0	6504.	8.6	-0.8	51.	229.2	10.4
750.0	8240.	3.6	-1.7	68.	245.4	8.2
700.0	10062.	-1.8	-2.5	95.	245.9	13.8
650.0	11986.	-5.6	-6.5	93.	239.0	24.7
600.0	14041.	-8.1	-17.2	48.	241.8	26.7
550.0	16238.	-12.6	-18.1	63.	257.7	28.5
500.0	18606.	-17.7	-20.7	77.	258.1	33.6
450.0	21167.	-23.1	-26.1	70.	252.8	30.2
400.0	23964.	-29.4	-35.5	55.	250.0	37.8
350.0	27047.	-37.2	-43.8	50.	251.8	49.7
300.0	30472.	-46.7	-49.8	70.	252.3	49.1
250.0	34361.	-54.5			251.9	51.7
200.0	39073.	-52.3			252.2	
175.0	41900.	-53.4				74.7



EN

DA

FILM

9-