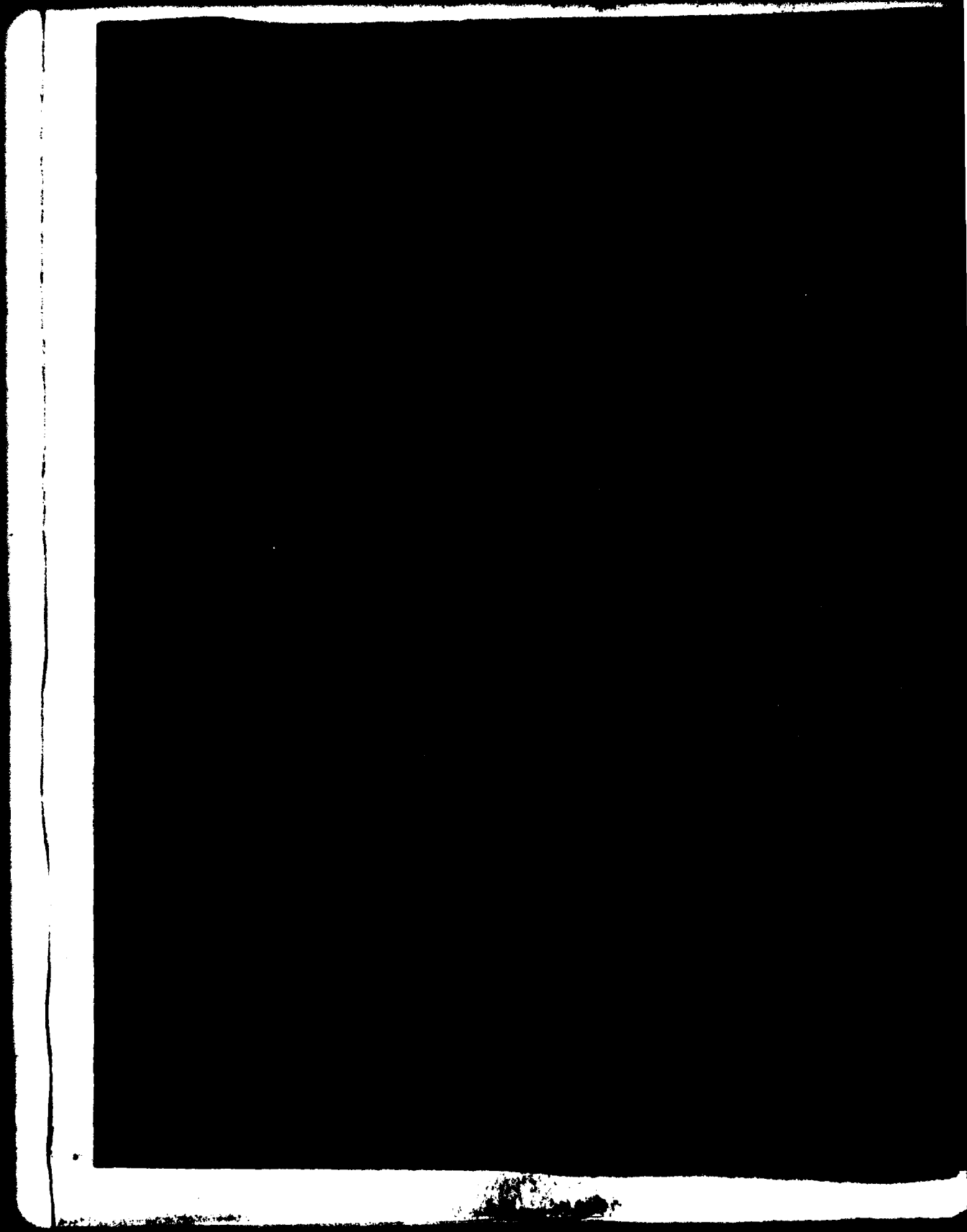


MICROCOPY RESOLUTION TEST CHART  
NATIONAL BUREAU OF STANDARDS 1963-A

ADA 087469

80 3 4 258

Handwritten text at the top of the page, possibly a title or header, which is mostly cut off.



## **DISCLAIMER NOTICE**

**THIS DOCUMENT IS BEST QUALITY PRACTICABLE. THE COPY FURNISHED TO DTIC CONTAINED A SIGNIFICANT NUMBER OF PAGES WHICH DO NOT REPRODUCE LEGIBLY.**

UNCLASSIFIED

SECURITY CLASSIFICATION OF THIS PAGE (When Data Entered)

14  
1. RUCS M/ASL

<b>REPORT DOCUMENTATION PAGE</b>		<b>READ INSTRUCTIONS BEFORE COMPLETING FORM</b>	
1. REPORT NUMBER DR-1138	2. GOVT ACCESSION NO. AD-A087469	3. RECIPIENT'S CATALOG NUMBER	
4. TITLE (and Subtitle) 19703D MLRS. Missile Numbers 40, 35, Round Numbers B-95, B-96, 14 Feb 1970		5. TYPE OF REPORT & PERIOD COVERED	
7. AUTHOR(s) White Sands Meteorological Team		8. CONTRACT OR GRANT NUMBER(s) DA Task / F665702D127-02	
9. PERFORMING ORGANIZATION NAME AND ADDRESS data kept.		10. PROGRAM ELEMENT, PROJECT, TASK AREA & WORK UNIT NUMBERS	
11. CONTROLLING OFFICE NAME AND ADDRESS US Army Electronics Research & Development Cmd Atmospheric Sciences Laboratory White Sands Missile Range, NM 88002		12. REPORT DATE FEBRUARY 1980	
14. MONITORING AGENCY NAME & ADDRESS (if different from Controlling Office) US Army Electronics Research & Development Cmd Adelphi, MD 20783		13. NUMBER OF PAGES 20	
		15. SECURITY CLASS. (of this report) UNCLASSIFIED	
16. DISTRIBUTION STATEMENT (of this Report) 12 20		15a. DECLASSIFICATION/DOWNGRADING SCHEDULE	
<div style="border: 1px solid black; padding: 5px; display: inline-block;"> <b>DISTRIBUTION STATEMENT A</b>          Approved for public release;          Distribution Unlimited       </div>			
17. DISTRIBUTION STATEMENT (of the abstract entered in Block 20, if different from Report) Approved for public release; distribution unlimited.			
18. SUPPLEMENTARY NOTES			
19. KEY WORDS (Continue on reverse side if necessary and identify by block number)			
20. ABSTRACT (Continue on reverse side if necessary and identify by block number) Meteorological data gathered for the launching of 19703D MLRS, Missile Numbers 40, 35, Round Numbers B-95, B-96 are presented in tabular form.			

410665

JP

CONTENTS

PAGE

INTRODUCTION----- 1

DISCUSSION----- 1

MAP----- 2

TABLES

1. Surface Observation Taken at "C" Station----- 3

2. NICK Pilot Balloon Measured Wind Data at 0500 MST----- 4

3. LC-39 Pilot Balloon Measured Wind Data at 0520 MST----- 5

4. LC-37 Significant Level Data at 0430 MST----- 6

5. LC-37 Upper Air Data at 0430 MST----- 7

6. LC-37 Mandatory Levels at 0430 MST----- 10

7. WSD Significant Level Data at 0440 MST----- 11

8. WSD Upper Air Data at 0440 MST----- 12

9. WSD Mandatory Levels at 0440 MST----- 16

<b>Accession For</b>	
NTIS GRA&I	<input checked="" type="checkbox"/>
DDC TAB	<input type="checkbox"/>
Unannounced Justification	<input type="checkbox"/>
By _____	
Distribution/	
<b>Availability Codes</b>	
<b>Dist</b>	<b>Availand/or special</b>
A	23

## INTRODUCTION

19703D MLRS, Missile Numbers 40, 35, Round Numbers B-95  
B-96, were launched from LC-39, White Sands Missile Range (WSMR),  
New Mexico, at 0528:02, 0528:06 MST, 14 February 1980.

## DISCUSSION

Meteorological data were recorded and reduced by the White Sands Meteorological Team, Atmospheric Sciences Laboratory (ASL), White Sands Missile Range, New Mexico. The data were obtained by the following methods:

### 1. Observations

#### a. Surface

(1) Standard surface observations to include pressure, temperature ( $^{\circ}\text{F}$ ), relative humidity, dew point ( $^{\circ}\text{F}$ ), wind direction and speed, and cloud cover were made at the "C" STATION Met Site.

(2) Monitor of wind speed and direction from one anemometer was provided in the launch control room.

#### b. Upper Air

(1) Low level wind data were obtained from RPTS T-9 pibal observation at:

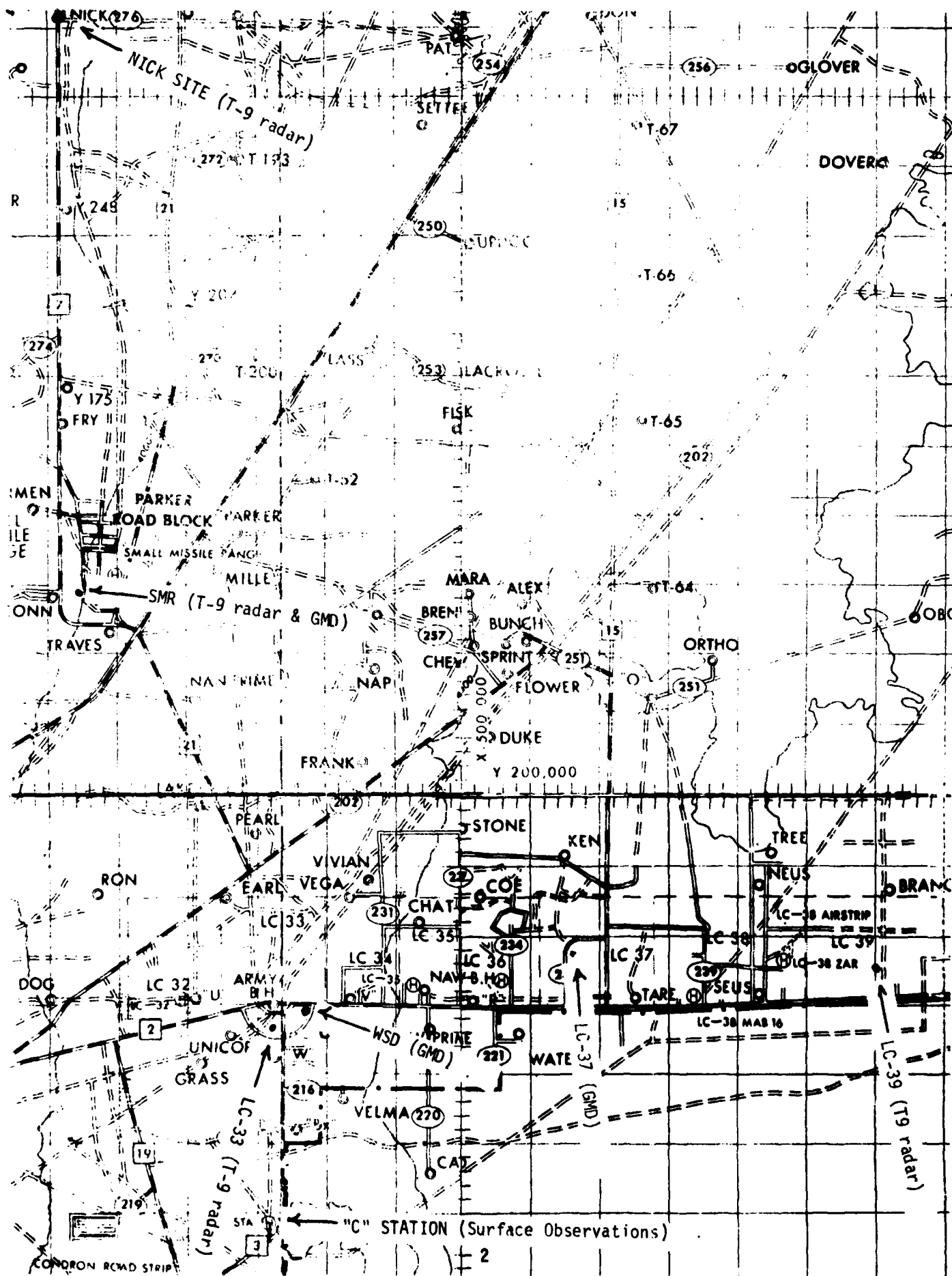
### SITE AND ALTITUDE

NICK 2km  
LC-39 2km

(2) Air structure data (rawinsonde) were collected at the following Met Sites.

### SITE AND TIME

LC-37 0430 MST  
WSD 0440 MST



NICK 276

NICK SITE (T-9 radar)

PAT  
SETTER

256

OGLOVER

DOVER

R

249

271

250

TURNER

T-67

T-66

7

270

LASS

253

JLAGRO

T-65

202

IMEN  
L  
ILE  
SE

PARKER  
ROAD BLOCK

SMR (T-9 radar & GMD)

257

MARA

ALEX

T-64

ONN

TRAVES

NAN NIME

NAP

BREN

BUNCH

SPRINT

251

ORTHO

CHEM

FLOWER

DUKE

FRANK

251

202

PEARL

STONE

KEN

TREE

RON

EARL

VIVIAN

VEGA

227

COE

NEUS

BRANK

DOG

LC 32

ARMY  
B H

LC 33

LC 34

LC 35

LC 36

LC 37

LC 38

LC 39

LC-38 ZAR

LC-38 MAB 16

UNICOF

GRASS

WSD

SPRINE (GMD)

221

WATE

LC-37 (GMD)

229

STARE

PSEUS

LC-39 (T9 radar)

CONDRON ROAD STRIP

"C" STATION (Surface Observations)

2

TABLE 1

SURFACE OBSERVATIONS OBTAINED FROM "C" STATION ON 14 February 1980

TIME MST	SKY CONDITIONS	PVLC VSBY	WEATHER AND OBSTRUCTIONS TO VISION	STA PRES IN hg	TEMP	DEW POINT	PRC IN	SPEED
0058	E600VC	10	RW-	25.925	49	47	160	10
0158	E600VC	10	RW-	25.920	48	47	160	08
0258	E600VC	10	RW-	25.920	49	47	170	13
0358	E600VC	10	RW-	25.925	50	44	140	05
0458	E600VC	15		25.950	49	43	200	12
0558	30SCTE500VC	15	RW-	25.965	48	44	170	11
0658	30SCTE550VC	40		25.935	47	44	170	18
0758	30SCTE55BKN90BKN250BKN	40		25.985	48	43	170	17
0858	30SCT55SCTE250BKN	40		25.990	54	43	160	17
0958	30SCT55SCT90SCTE250BKN	40		26.015	57	50	270	14
1058	30SCTE55BKN250BKN	40		26.030	56	43	190	13
1158	30SCT55SCTE80BKN250BKN	40		25.995	58	43	220	13
1258	30SCTE55BKN80BKN250BKN	40		25.970	58	43	170	11
1358	E55BKN80BKN2500VC	40		25.940	58	31	190	14
1458	E55BKN80BKN250BKN	40		25.940	60	43	190	16
1558	E55BKN80BKN250BKN	40		25.935	60	46	150	11
1658	E55BKN120BKN250BKN	40		25.935	61	44	220	08
1758	E40BKN120BKN2500VC	30		25.970	54	55	200	09
1858	E40BKN	10	RW-	25.970	55	46	220	06
1958	40SCT120SCT	10		25.970	57	43	210	14
2058	40SCT120SCT	10		25.975	57	43	170	12
2158	40SCT120SCT	10		25.975	53	45	E090	12
2258	40SCT	10		25.975	54	45	100	12
2358	40SCT	10		25.975	54	55	130	12





STATION ALTITUDE 4047.27 FEET MSL  
 14 FEB. 60 0430 HRS MST  
 ASCENSION NO. 13

SIGNIFICANT LEVEL DATA  
 0450180013  
 LC-37

GEODEIC COORDINATES  
 32.41141 LAT DEG  
 106.30852 LON DEG

TABLE 4

PRESSURE MILLIBARS	GEOMETRIC ALTITUDE MSL FEET	TEMPERATURE		REL. HUM. PERCENT
		AIR DEGREES	DEWPOINT CELSIUS	
876.9	4047.3	9.5	7.3	96.0
850.0	4897.2	9.1	4.5	73.0
789.0	6910.8	4.8	.9	76.0
727.6	9065.5	.0	-2.3	98.0
700.0	10081.1	-2.1	-2.2	99.0
596.8	14202.6	-8.6	-0.7	99.0
554.4	16071.1	-12.0	-12.9	93.0
500.0	18646.5	-17.1	-18.6	98.0
447.8	21337.3	-23.0	-24.3	99.0
400.0	24023.7	-29.6	-31.7	82.0
345.4	27400.0	-38.2	-41.6	70.0
300.0	30541.1	-47.1	-50.7	96.0
274.6	32446.3	-52.6		
250.0	34435.6	-54.2		
240.6	35245.7	-53.9		
231.6	3605.2	-54.4		
200.0	39156.8	-53.1		
176.4	41814.0	-54.7		
168.8	42744.2	-54.0		
150.0	45231.9	-55.9		
132.0	47892.4	-59.4		
118.0	50179.2	-64.6		
104.6	52600.1	-66.0		
100.0	53497.1	-67.5		
85.7	56530.4	-71.0		
82.0	5741.0	-66.7		
72.4	59876.2	-69.9		
70.0	60540.9	-68.6		
67.0	61410.9	-66.5		
63.4	62517.1	-66.0		

STATION ALTITUDE 4047.27 FEET MSL  
 14 FEB. 80  
 ASCENSION NO. 13

UPPER AIR DATA  
 0450180015  
 LC-37

GEODETIC COORDINATES  
 32.41141 LA1 DEG  
 106.30852 LON 1EG

TABLE 5

GEOMETRIC ALTITUDE MSL FEET	PRESSURE MILLIBARS	TEMPERATURE AIR DEGREES	TEMPERATURE DEWPOINT DEGREES CENTIGRADE	REL. HUM. PERCENT	DENSITY GM/CM <sup>3</sup> METER	SPEED OF SOUND KNOTS	WIND DATA		INDEX OF REFRACTION
							DIRECTION DEGREES (TN)	SPEED KNOTS	
4047.3	876.9	9.5	7.3	86.0	1070.0	650.4	170.0	6.0	1.000268
4500.0	862.5	9.3	5.9	79.1	1059.5	650.1	207.1	6.6	1.000240
5000.0	846.8	8.9	4.3	73.2	1042.0	655.5	231.9	9.6	1.000272
5500.0	831.3	7.8	3.0	73.9	1027.0	654.2	244.0	13.4	1.000266
6000.0	816.0	6.7	2.0	74.6	1012.2	652.9	250.5	17.5	1.000261
6500.0	801.1	5.7	1.7	75.4	997.6	651.6	254.2	19.8	1.000256
7000.0	786.4	4.6	.9	76.9	983.2	650.3	257.1	21.4	1.000251
7500.0	771.7	3.5	.7	82.0	968.7	649.0	260.2	22.2	1.000248
8000.0	757.3	2.4	.5	87.1	954.5	647.7	263.5	22.4	1.000244
8500.0	743.2	1.3	.1	92.2	940.6	646.4	266.4	22.7	1.000241
9000.0	729.4	.1	-.2	97.3	926.8	645.0	269.0	22.9	1.000237
9500.0	715.7	-.9	-1.1	98.4	913.0	643.8	271.6	23.5	1.000232
10000.0	702.2	-1.9	-2.1	98.9	899.3	642.5	274.0	24.5	1.000227
10500.0	688.7	-2.8	-2.1	99.0	885.0	641.5	276.1	25.7	1.000223
11000.0	675.5	-3.5	-3.7	99.0	870.6	640.5	277.3	26.8	1.000218
11500.0	662.6	-4.3	-4.5	99.0	856.5	639.5	278.9	27.6	1.000214
12000.0	649.9	-5.1	-5.3	99.0	842.7	638.6	281.6	28.2	1.000210
12500.0	637.4	-5.9	-6.1	99.0	829.1	637.6	284.3	28.7	1.000205
13000.0	625.2	-6.7	-6.8	99.0	815.6	636.6	287.0	29.2	1.000201
13500.0	613.2	-7.5	-7.6	99.0	802.5	635.6	289.6	30.9	1.000197
14000.0	601.5	-8.3	-8.4	99.0	789.5	634.7	292.1	32.7	1.000193
14500.0	589.8	-9.1	-9.4	98.4	776.6	633.6	294.3	34.3	1.000189
15000.0	578.3	-10.1	-10.5	96.4	764.4	632.5	295.8	35.7	1.000185
15500.0	567.0	-11.0	-11.6	94.8	752.1	631.3	297.3	36.7	1.000181
16000.0	556.0	-11.9	-12.7	93.2	740.1	630.2	298.9	37.1	1.000178
16500.0	544.9	-12.8	-13.8	92.2	728.3	629.0	299.5	36.6	1.000174
17000.0	534.1	-13.8	-15.0	91.2	716.8	627.8	299.5	36.1	1.000170
17500.0	523.5	-14.8	-16.1	90.2	705.1	626.5	298.1	35.6	1.000167
18000.0	513.1	-15.8	-17.2	89.3	693.8	625.3	295.8	35.9	1.000164
18500.0	502.9	-16.8	-18.3	88.3	682.6	624.1	291.4	36.9	1.000160
19000.0	492.8	-17.9	-19.3	88.1	671.8	622.8	289.5	38.0	1.000157
19500.0	482.8	-19.0	-20.4	88.3	661.1	621.4	286.5	39.2	1.000154
20000.0	473.0	-20.1	-21.5	88.5	650.5	620.0	283.1	40.1	1.000151
20500.0	463.4	-21.2	-22.5	88.7	640.2	618.7	279.4	41.0	1.000149
21000.0	454.0	-22.3	-23.6	88.9	630.0	617.3	275.1	41.4	1.000146
21500.0	444.7	-23.4	-24.7	88.6	619.9	615.9	270.4	41.2	1.000143
22000.0	435.5	-24.6	-26.1	87.3	610.1	614.3	265.0	40.9	1.000140
22500.0	426.4	-25.9	-27.5	86.0	600.4	612.8	259.6	40.2	1.000138
23000.0	417.6	-27.1	-28.9	84.7	590.9	611.3	254.2	40.4	1.000135
23500.0	408.9	-28.3	-30.2	83.4	581.5	609.7	248.0	41.5	1.000133

UPPLR AIR DATA  
 0450180013  
 LC-37

STATION ALTITUDE 4047.27 FEET MSL  
 14 FEB. 80  
 ASCENSION NO. 13

GEOMETRIC COORDINATES  
 32.41141 LAT DEG  
 106.30852 LONG DEG

TABLE 5 (CONT)

GEOMETRIC ALTITUDE MSL FEET	PRESSURE MILLIBARS	TEMPERATURE AIR DEGREES	TEMPERATURE WLMPOINT CENTIGRADE	REL. HUM. PERCENT	DENSITY GM/CUBIC METER	SPEED OF SOUND KNOTS	WIND DIRECTION DEGREES (T, I)	WIND SPEED KNOTS	INDEX OF REFRACTION
24000.0	400.4	-29.5	-31.6	82.1	572.3	608.2	240.2	43.4	1.000130
24500.0	391.8	-30.8	-33.1	80.3	563.0	605.0	239.0	45.9	1.000128
25000.0	383.4	-32.1	-34.5	78.5	553.9	605.0	238.5	47.6	1.000125
25500.0	375.2	-33.4	-36.0	76.8	544.9	603.4	238.5	48.8	1.000123
26000.0	367.2	-34.6	-37.5	75.0	536.1	601.8	238.2	48.9	1.000121
26500.0	359.3	-35.9	-38.9	73.2	527.4	600.1	237.7	48.2	1.000119
27000.0	351.6	-37.2	-40.4	71.4	518.9	598.5	237.2	48.1	1.000117
27500.0	344.0	-38.5	-41.9	69.9	510.5	596.9	236.8	48.2	1.000115
28000.0	336.5	-39.9	-43.3	69.2	502.2	595.1	236.5	48.5	1.000113
28500.0	328.9	-41.3	-44.7	68.6	494.1	593.2	236.3	49.0	1.000111
29000.0	321.5	-42.7	-46.2	68.0	486.1	591.4	236.0	49.1	1.000109
29500.0	314.4	-44.1	-47.7	67.3	478.2	589.6	235.8	49.1	1.000107
30000.0	307.4	-45.6	-49.1	66.7	470.5	587.7	235.4	48.8	1.000105
30500.0	300.6	-47.0	-50.6	66.1	462.9	585.9	235.0	48.4	1.000104
31000.0	293.7	-48.4	-52.1	65.5	455.2	584.0	234.6	47.6	1.000102
31500.0	286.9	-49.9	-53.6	64.9	447.7	582.1	234.2	46.7	1.000100
32000.0	280.3	-51.3	-55.1	64.3	440.2	580.3	233.7	49.2	1.000098
32500.0	273.9	-52.6	-56.6	63.7	432.4	578.5	233.6	53.3	1.000096
33000.0	267.5	-53.9	-58.1	63.1	423.4	576.7	242.9	58.5	1.000094
33500.0	261.3	-55.2	-59.6	62.5	414.3	574.4	247.9	64.5	1.000092
34000.0	255.2	-56.5	-61.1	61.9	405.4	572.3	251.0	68.4	1.000090
34500.0	249.2	-57.8	-62.6	61.3	396.5	570.5	255.0	72.6	1.000088
35000.0	243.4	-59.1	-64.1	60.7	386.9	568.7	256.7	77.3	1.000086
35500.0	237.7	-60.4	-65.6	60.1	369.7	566.6	258.0	81.4	1.000084
36000.0	232.2	-61.7	-67.1	59.5	360.8	564.4	259.6	83.9	1.000082
36500.0	226.7	-63.0	-68.6	58.9	352.0	562.2	260.4	85.9	1.000080
37000.0	221.4	-64.3	-70.1	58.3	343.5	560.0	261.2	87.3	1.000078
37500.0	216.3	-65.6	-71.6	57.7	335.1	557.7	262.2	88.6	1.000077
38000.0	211.2	-66.9	-73.1	57.1	327.0	555.5	262.9	89.8	1.000075
38500.0	206.3	-68.2	-74.6	56.5	319.1	553.2	263.6	89.8	1.000073
39000.0	201.5	-69.5	-76.1	55.9	311.8	551.0	263.6	89.7	1.000071
39500.0	196.8	-70.8	-77.6	55.3	305.0	548.8	264.1	89.0	1.000069
40000.0	192.2	-72.1	-79.1	54.7	298.2	546.6	264.2	88.6	1.000068
40500.0	187.7	-73.4	-80.6	54.1	291.7	544.4	264.3	89.6	1.000066
41000.0	183.3	-74.7	-82.1	53.5	285.3	542.2	264.4	90.6	1.000065
41500.0	179.0	-76.0	-83.6	52.9	278.9	540.0	264.4	92.4	1.000064
42000.0	174.9	-77.3	-85.1	52.3	272.7	537.8	264.0	93.6	1.000062
42500.0	170.8	-78.6	-86.6	51.7	266.5	535.6	263.5	94.7	1.000061
43000.0	166.8	-80.0	-88.1	51.1	260.3	533.4	262.4	96.2	1.000059
43500.0	162.9	-81.3	-89.6	50.5	254.1	531.2	261.1	97.8	1.000058

\*\* AT LEAST ONE ASSUMED RELATIVE HUMIDITY VALUE WAS USED IN THE INTERPOLATION.

STATION ALTITUDE 4047.27 FEET MSL  
 14 FEB. 60 0430 HRS MST  
 ASCENSION NO. 13

UPPER AIR DATA  
 0450100013  
 LC-37

GEODETIC COORDINATES  
 32.41141 LAT DEG  
 106.30852 LONG DEG

TABLE 5 (CONT)

GEOMETRIC ALTITUDE MSL FEET	PRESSURE MILLIBARS	TEMPERATURE AIR DEGREES CENTIGR. DE	REL. HUM. PERCENT	DENSITY GM/CM <sup>3</sup> MLTER	SPEED OF SOUND KNOTS	WIND DATA		INDEX OF REFRACTION
						DIRECTION DEGREES(T)	SPEED KNOTS	
4400.0	159.0	-55.0		253.9	575.5	260.1	100.0	1.000057
4450.0	155.5	-55.5		248.4	575.0	259.1	102.2	1.000055
4500.0	151.7	-55.7		243.0	574.5	258.2	102.2	1.000054
4550.0	148.1	-56.3		237.8	573.7	257.4	102.1	1.000053
4600.0	144.6	-56.9		232.9	572.9	256.3	100.4	1.000052
4650.0	141.1	-57.6		228.1	572.0	255.2	98.8	1.000051
4700.0	137.8	-58.2		223.5	571.1	254.2	94.3	1.000050
4750.0	134.5	-58.9		218.7	570.3	253.1	89.8	1.000049
4800.0	131.3	-59.6		214.2	569.2	251.9	83.5	1.000048
4850.0	128.1	-60.8		210.2	567.7	250.4	76.3	1.000047
4900.0	125.0	-61.9		206.2	566.2	248.8	69.3	1.000046
4950.0	122.0	-63.1		202.3	564.7	247.3	62.5	1.000045
5000.0	119.0	-64.2		198.5	563.2	245.7	56.1	1.000044
5050.0	116.1	-64.8		194.2	562.4	246.0	52.5	1.000043
5100.0	113.5	-65.1		189.6	562.0	247.0	49.9	1.000042
5150.0	110.5	-65.4		185.2	561.6	249.2	49.5	1.000041
5200.0	107.8	-65.7		180.9	561.2	251.0	51.8	1.000040
5250.0	105.1	-65.9		176.7	560.8	252.2	56.2	1.000039
5300.0	102.5	-66.7		173.0	559.8	251.6	60.0	1.000039
5350.0	100.0	-67.5		169.4	558.7	250.6	63.8	1.000038
5400.0	97.5	-68.1		165.6	557.9	249.2	64.4	1.000037
5450.0	95.0	-68.7		161.9	557.1	248.9	61.9	1.000036
5500.0	92.7	-69.2		158.3	556.3	248.7	59.1	1.000035
5550.0	90.3	-69.8		154.8	555.5	251.2	55.2	1.000034
5600.0	88.1	-70.4		151.3	554.8	254.1	51.5	1.000034
5650.0	85.9	-71.0		147.9	554.0	257.9	52.3	1.000033
5700.0	83.7	-68.7		142.7	557.0	261.6	53.7	1.000032
5750.0	81.6	-66.8		137.8	559.6	263.0	56.0	1.000031
5800.0	79.6	-67.5		134.8	558.7	263.1	58.8	1.000030
5850.0	77.6	-68.1		131.9	557.8	263.1	60.4	1.000029
5900.0	75.7	-68.8		129.0	557.0	263.0	58.8	1.000029
5950.0	73.8	-69.4		126.2	556.1	262.8	57.2	1.000028
6000.0	71.9	-69.7		123.2	555.7	264.2	54.4	1.000027
6050.0	70.1	-68.7		119.5	557.1	265.7	51.5	1.000027
6100.0	68.4	-67.5		115.9	558.7	268.4	51.3	1.000026
6150.0	66.7	-66.5		112.4	560.1	268.9	51.6	1.000025
6200.0	65.1	-66.2		109.5	560.4			1.000024
6250.0	63.5	-66.0		106.7	560.7			1.000024

STATION ALTITUDE 4047.27 FEET MSL  
 14 FEB. 80  
 ASCENSION NO. 13

MANDATORY LEVELS  
 0450180013  
 LC-37

GEODETIC COORDINATES  
 32.41141 LAT DEG  
 106.30852 LON DEG

TABLE 6

PRESSURE GEOPOTENTIAL		TEMPERATURE		REL. HUM. PERCENT	WIND DATA	
MILLIBARS	FEET	AIR DEGREES	DEWPOINT CENTIGRADE		DIRECTION DEGREES(TN)	SPEED KNOTS
850.0	4894.	9.1	4.5	73.	228.1	8.8
800.0	6534.	5.6	1.6	75.	254.4	19.9
750.0	8256.	1.6	.3	90.	264.6	22.6
700.0	10071.	-2.1	-2.2	99.	250.0	24.7
650.0	11996.	-5.1	-5.3	99.	251.6	28.2
600.0	14050.	-8.4	-8.5	99.	252.2	32.9
550.0	16251.	-12.4	-13.3	93.	254.5	36.8
500.0	18621.	-17.1	-18.6	88.	251.3	37.2
450.0	21187.	-22.7	-24.0	89.	236.8	41.3
400.0	23984.	-29.6	-31.7	82.	240.1	43.5
350.0	27060.	-37.4	-40.7	71.	237.1	48.1
300.0	30481.	-47.1	-50.7	66.	235.0	48.3
250.0	34362.	-54.2			254.7	71.9
200.0	39064.	-53.1			263.6	89.5
175.0	41877.	-54.6			264.1	93.6
150.0	45112.	-55.9			257.9	102.1
125.0	48872.	-61.9			248.8	69.5
100.0	53334.	-67.5			250.6	63.5
80.0	57713.	-67.3			263.1	58.1
70.0	60336.	-68.6			265.8	51.4

GEODETIC COORDINATES  
 32.40043 LAT DEG  
 106.37033 LON DEG

SIGNIFICANT LEVEL DATA  
 0450020003  
 WHITE SANDS

TABLE 7

STATION ALTITUDE 3989.00 FEET MSL  
 19 FEB. 60  
 ASCENSION NO. 83

PRESSURE MILLIBARS	GEOMETRIC ALTITUDE MSL FEET	TEMPERATURE		REL. HUM. PERCENT
		AIR DEGREES	DEWPOINT CENTIGRADE	
878.4	3989.0	9.8	7.2	64.0
865.8	4383.9	9.9	4.7	70.0
850.0	4886.9	9.6	3.0	67.0
815.0	6028.5	6.6	2.5	75.0
784.6	7051.0	4.4	1.9	84.0
726.8	9085.1	.0	-.1	99.0
700.0	10074.5	-.7	-1.0	98.0
688.8	10497.5	-2.2	-2.3	99.0
547.4	16391.2	-12.4	-12.9	96.0
500.0	18649.0	-16.9	-18.4	88.0
421.6	22786.3	-26.2	-28.0	80.0
400.0	24030.0	-29.5	-32.8	73.0
338.6	27865.0	-39.4	-42.1	75.0
332.0	28307.6	-40.6	-44.2	68.0
307.0	30042.3	-46.1	-49.9	65.0
300.0	30545.6	-47.6		
276.8	32278.9	-52.1		
254.4	34065.1	-55.3		
250.0	34431.7	-55.3		
207.4	38376.3	-53.3		
200.0	39149.2	-52.1		
162.2	45597.0	-54.3		
150.0	45241.4	-56.4		
131.0	48056.9	-59.4		
113.4	50990.1	-66.0		
110.2	51561.3	-67.3		
103.6	52790.9	-66.9		
100.0	53492.8	-68.7		
94.6	54587.0	-69.7		
85.8	56536.8	-63.4		
72.2	59980.8	-70.1		
70.0	60591.1	-68.3		
64.4	62248.7	-66.9		
50.0	67305.0	-66.4		
47.6	68285.6	-67.9		
38.6	72485.0	-64.4		
34.7	74617.8	-68.3		
30.0	77532.8	-64.4		
24.0	82043.0	-64.1		

UPPER AIR DATA  
 0450U20063  
 WHITE SANDS

STATION ALTITUDE 3989.00 FEET MSL  
 14 FEB. 80 0440 HRS MST  
 ASCENSION NO. 83

GEOMETRIC COORDINATES  
 32.40043 LAT LEG  
 106.37033 LONG LEG

TABLE 8

GEOMETRIC ALTITUDE MSL FEET	PRESSURE MILLIBARS	AIR TEMPERATURE DEGREES	DEWPOINT DEGREES	REL. HUM. PERCENT	DENSITY GM/CUBIC METER	SPEED OF SOUND KNOTS	WIND DIRECTION DEGREES (TN)	WIND SPEED KNOTS	INDEX OF REFRACTION
3989.0	878.4	9.8	7.2	84.0	1076.7	656.8	150.0	5.1	1.000288
4000.0	878.0	9.8	7.2	83.6	1076.3	656.8	150.9	5.0	1.000288
4500.0	862.1	9.8	4.5	69.3	1057.4	656.6	206.9	4.3	1.000275
5000.0	846.5	9.3	3.7	67.8	1040.3	655.9	242.3	7.1	1.000270
5500.0	831.0	8.0	3.1	71.5	1026.2	654.4	255.3	11.1	1.000265
6000.0	815.9	6.7	2.5	74.8	1012.2	652.8	261.4	15.2	1.000261
6500.0	800.8	5.6	2.3	79.1	997.5	651.5	266.3	19.1	1.000257
7000.0	786.1	4.5	2.0	83.6	982.9	650.3	266.1	22.3	1.000254
7500.0	771.5	3.4	1.5	87.3	968.4	649.0	267.3	22.5	1.000250
8000.0	757.1	2.3	1.0	91.0	954.2	647.7	268.8	22.1	1.000245
8500.0	743.0	1.3	.5	94.7	940.1	646.4	269.4	21.2	1.000241
9000.0	729.1	.2	-0.0	98.4	926.3	645.1	268.8	21.1	1.000237
9500.0	715.4	-0.3	-0.5	98.6	912.0	644.5	248.3	21.6	1.000233
10000.0	702.0	-0.6	-0.9	98.1	894.6	644.1	241.7	22.8	1.000229
10500.0	688.7	-2.2	-2.3	99.0	883.0	642.2	237.5	24.3	1.000223
11000.0	675.4	-3.1	-3.2	98.7	868.9	641.1	236.0	25.5	1.000219
11500.0	662.4	-3.9	-4.1	98.5	854.9	640.0	238.9	26.7	1.000214
12000.0	649.6	-4.8	-5.0	98.2	841.2	639.0	240.5	28.1	1.000210
12500.0	637.1	-5.7	-5.9	98.0	827.8	637.9	242.7	29.2	1.000205
13000.0	624.8	-6.5	-6.8	97.7	814.5	636.8	245.8	30.0	1.000201
13500.0	612.7	-7.4	-7.7	97.5	801.5	635.8	250.5	31.2	1.000197
14000.0	600.9	-8.3	-8.6	97.2	788.7	634.7	250.5	33.0	1.000193
14500.0	589.5	-9.1	-9.5	97.0	776.1	633.6	258.0	34.4	1.000189
15000.0	577.9	-10.0	-10.4	96.7	763.6	632.6	257.7	35.4	1.000185
15500.0	566.8	-10.9	-11.3	96.5	751.4	631.5	254.9	35.3	1.000182
16000.0	555.8	-11.7	-12.2	96.2	739.4	630.4	252.5	35.2	1.000178
16500.0	545.0	-12.6	-13.2	95.6	727.6	629.3	252.0	35.4	1.000174
17000.0	534.2	-13.6	-14.4	93.8	716.0	628.1	252.0	35.7	1.000171
17500.0	523.6	-14.6	-15.6	92.1	704.6	626.8	251.1	36.0	1.000167
18000.0	513.2	-15.6	-16.8	90.3	693.3	625.6	249.7	36.3	1.000164
18500.0	503.0	-16.6	-18.0	88.5	682.3	624.3	248.0	36.8	1.000160
19000.0	492.8	-17.7	-19.3	87.3	671.4	623.0	248.0	38.2	1.000157
19500.0	482.8	-18.8	-20.5	86.4	660.6	621.6	248.9	39.2	1.000154
20000.0	472.9	-19.9	-21.7	85.4	650.1	620.2	248.9	39.8	1.000151
20500.0	463.5	-21.1	-23.0	84.4	639.7	618.8	248.0	40.1	1.000148
21000.0	453.8	-22.2	-24.2	83.5	629.5	617.4	248.3	40.3	1.000145
21500.0	444.0	-23.3	-25.4	82.5	619.5	616.0	245.4	40.5	1.000143
22000.0	435.5	-24.4	-26.7	81.5	609.6	614.6	244.0	40.7	1.000140
22500.0	426.8	-25.6	-27.9	80.6	600.9	613.2	244.5	41.3	1.000137
23000.0	417.8	-26.8	-29.3	79.6	600.5	611.7	244.5	42.0	1.000135

UPPER AIR DATA  
 0450020063  
 WHITE SANDS

STATION ALTITUDE 3989.00 FEET MSL  
 14 FEB. 80 0440 HRS MST  
 ASCENSION NO. 83

GEODETIC COORDINATES  
 32.40043 LAT (LEG  
 106.57033 LONG (LEG

TABLE 8 (CONT)

GEOMETRIC ALTITUDE MSL FEET	PRESSURE MILLIBARS	TEMPERATURE AIR DEGREES CELSIUS	TEMPERATURE DEWPOINT CENTIGRADE	REL. HUM. PERCENT	DENSITY GM/CM <sup>3</sup> METER	SPEED OF SOUND M/SEC	WIND DATA DIRECTION, DEGREES (TN)	SPEED KNOTS	INDEX OF REFRACTION,
23500.0	409.1	-28.1	-31.0	76.0	581.3	010.0	243.6	43.5	1.000132
24000.0	400.9	-29.4	-32.7	73.2	572.2	009.3	243.0	44.7	1.000130
24500.0	391.9	-30.7	-33.9	73.2	563.0	008.7	242.7	45.5	1.000128
25000.0	383.9	-32.0	-35.1	73.5	553.8	008.1	242.0	45.1	1.000125
25500.0	375.2	-33.3	-36.3	73.8	544.9	007.4	239.9	43.7	1.000123
26000.0	367.2	-34.6	-37.6	74.0	536.1	006.8	239.2	42.7	1.000121
26500.0	359.3	-35.9	-38.8	74.3	527.4	006.2	239.2	42.0	1.000119
27000.0	351.6	-37.2	-40.0	74.5	518.9	005.5	239.6	43.0	1.000117
27500.0	344.0	-38.5	-41.2	74.8	510.5	004.9	240.5	44.4	1.000115
28000.0	336.6	-39.8	-42.7	72.9	502.3	004.2	240.4	45.5	1.000113
28500.0	329.1	-41.2	-44.8	67.7	494.3	003.3	240.2	46.5	1.000111
29000.0	321.8	-42.8	-46.4	66.8	486.6	002.3	239.6	47.0	1.000109
29500.0	314.6	-44.4	-48.1	65.9	479.0	001.3	239.5	47.3	1.000107
30000.0	307.6	-46.0	-49.7	65.1	471.6	000.2	239.0	48.4	1.000106
30500.0	300.6	-47.5	-69.5	5.9**	464.0	000.3	238.5	49.7	1.000103
31000.0	293.7	-48.8			456.1	000.5	239.1	51.4	1.000102
31500.0	287.0	-50.1			448.2	001.9	240.0	53.3	1.000100
32000.0	280.4	-51.4			440.5	002.2	242.8	55.1	1.000098
32500.0	273.9	-52.5			432.5	002.7	240.0	57.0	1.000096
33000.0	267.5	-53.4			424.1	003.5	249.8	60.7	1.000094
33500.0	261.3	-54.3			415.9	004.3	253.2	64.9	1.000093
34000.0	255.2	-55.2			407.8	005.2	250.5	68.5	1.000091
34500.0	249.2	-55.9			398.4	005.1	259.3	72.3	1.000089
35000.0	243.4	-55.0			388.6	005.4	251.2	76.4	1.000087
35500.0	237.7	-54.8			379.1	005.7	252.0	80.6	1.000084
36000.0	232.1	-54.5			369.8	005.1	253.0	84.9	1.000082
36500.0	226.7	-54.3			360.7	005.4	253.5	88.0	1.000080
37000.0	221.4	-54.0			351.9	005.7	253.6	89.0	1.000078
37500.0	216.2	-53.7			343.3	005.1	254.3	88.6	1.000076
38000.0	211.1	-53.5			334.8	005.4	253.4	87.0	1.000075
38500.0	206.2	-53.1			326.4	005.9	250.0	85.9	1.000073
39000.0	201.4	-52.9			317.7	005.9	250.6	85.1	1.000071
39500.0	196.7	-52.5			310.3	005.0	250.4	84.3	1.000069
40000.0	192.1	-52.3			303.4	005.7	255.4	83.7	1.000068
40500.0	187.7	-52.0			296.7	005.3	255.6	83.4	1.000066
41000.0	183.3	-53.0			290.1	005.0	257.2	84.3	1.000065
41500.0	179.0	-53.3			283.6	005.7	257.5	87.2	1.000063
42000.0	174.9	-53.5			277.4	005.4	257.2	89.5	1.000062
42500.0	170.8	-53.8			271.2	005.0	255.5	91.4	1.000060
43000.0	166.8	-54.0			265.2	005.7	255.8	90.0	1.000059

\*\* AT LEAST ONE ASSUMED RELATIVE HUMIDITY VALUE WAS USED IN THE INTERPOLATION.

STATION ALTITUDE 3989.00 FEET MSL  
 IN FEB. 60  
 ASCENSION NO. 83  
 0440 HRS MST

UPPER AIR DATA  
 045002003  
 WHITE SANDS

GEOLYTIC COORDINATES  
 32.40043 LAT DEG  
 106.37033 LONG DEG

TABLE 8 (CONT)

GEOMETRIC ALTITUDE MSL FEET	PRESSURE MILLIBARS	AIR TEMPERATURE DEGREES CENTIGRADE	REL. HUM. PERCENT	DENSITY GM/CM <sup>3</sup> METER	SPEED OF SOUND KNOTS	WIND DIRECTION DEGREES (TN)	WIND SPEED KNOTS	INDEX OF REFRACTION
43500.0	162.9	-54.3		259.3	576.4	265.2	85.6	1.000058
44000.0	159.1	-54.8		253.9	575.6	264.6	80.3	1.000057
44500.0	155.4	-55.5		243.6	574.8	263.9	74.0	1.000055
45000.0	151.7	-56.1		243.5	574.0	262.3	69.7	1.000054
45500.0	148.1	-56.7		238.4	573.2	259.4	67.9	1.000053
46000.0	144.6	-57.2		233.3	572.5	258.1	68.8	1.000052
46500.0	141.2	-57.7		228.3	571.8	252.6	73.6	1.000051
47000.0	137.8	-58.3		223.5	571.1	250.5	78.1	1.000050
47500.0	134.6	-58.8		218.7	570.4	249.5	82.0	1.000049
48000.0	131.4	-59.3		214.0	569.7	248.5	85.8	1.000048
48500.0	128.2	-60.4		209.9	568.2	249.1	86.9	1.000047
49000.0	125.1	-61.5		205.9	566.7	247.9	86.8	1.000046
49500.0	122.0	-62.6		201.9	565.2	247.7	86.6	1.000045
50000.0	119.1	-63.8		198.1	563.7	246.4	85.7	1.000044
50500.0	116.2	-64.9		194.3	562.2	249.3	84.8	1.000043
51000.0	113.3	-66.0		190.6	560.7	250.3	84.5	1.000042
51500.0	110.5	-67.2		186.9	559.1	252.0	86.6	1.000042
52000.0	107.8	-67.2		182.3	559.1	253.6	88.7	1.000041
52500.0	105.1	-67.0		177.8	559.4	255.2	90.1	1.000040
53000.0	102.5	-67.4		173.8	558.8	257.0	90.7	1.000039
53500.0	100.0	-68.7		170.3	557.0	258.6	88.8	1.000038
54000.0	97.5	-69.2		166.4	556.4	260.2	80.3	1.000037
54500.0	95.0	-69.6		162.6	555.8	261.5	71.9	1.000036
55000.0	92.7	-68.4		157.6	557.5	262.1	65.3	1.000035
55500.0	90.4	-66.7		152.5	559.7	262.5	55.4	1.000034
56000.0	88.1	-65.1		147.6	561.9	262.5	48.2	1.000033
56500.0	86.0	-63.5		142.8	564.1	262.5	41.4	1.000032
57000.0	83.8	-64.3		139.8	563.0	263.0	36.8	1.000031
57500.0	81.8	-65.3		137.0	561.7	263.6	32.2	1.000031
58000.0	79.7	-66.2		134.2	560.4	264.8	29.5	1.000030
58500.0	77.8	-67.2		131.5	559.1	266.5	29.7	1.000029
59000.0	75.8	-68.2		128.9	557.7	266.3	29.9	1.000029
59500.0	74.0	-69.2		126.3	556.4	269.6	31.5	1.000028
60000.0	72.1	-70.0		123.7	555.2	270.5	33.9	1.000028
60500.0	70.3	-68.6		119.7	557.2	271.4	36.3	1.000027
61000.0	68.6	-68.0		116.4	556.1	270.9	40.0	1.000026
61500.0	66.9	-67.5		113.3	556.0	270.0	44.4	1.000025
62000.0	65.2	-67.1		110.3	559.2	269.3	48.7	1.000025
62500.0	63.6	-66.9		107.4	559.5	269.2	51.3	1.000024
63000.0	62.0	-66.8		104.7	559.6	269.2	55.2	1.000023

GEODETIC COORDINATES  
32.40043 LAT 15G  
106.37053 LON DEG

UPPER AIR DATA  
0450200J3  
WHITE SANDS

STATION ALTITUDE 3949.00 FEET MSL  
14 FEB. 60  
ASCE/STATION NO. 83

TABLE 8 (CONT)

GEOMETRIC ALTITUDE MSL FEET	PRESSURE MILLIBARS	AIR TEMPERATURE DEGREES CENTIGRADE	REL. HUM. PERCENT	DENSITY GM/CUBIC METER	SPEED OF SOUND KNOTS	WIND DATA DIRECTION (T) DEGREES (T)	SPEED KNOTS	INDEX OF REFRACTION
63500.0	60.5	-66.8		102.1	559.7	209.2	55.2	1.000023
64000.0	59.0	-66.7		99.6	559.7	209.7	56.9	1.000022
64500.0	57.5	-66.7		97.1	559.8	270.1	58.5	1.000022
65000.0	56.1	-66.6		94.7	559.9	270.0	59.2	1.000021
65500.0	54.7	-66.6		92.3	559.9	271.3	59.2	1.000021
66000.0	53.4	-66.5		90.0	560.0	272.2	57.7	1.000020
66500.0	52.1	-66.5		87.7	560.1	275.5	48.2	1.000020
67000.0	50.8	-66.4		85.0	560.1	280.3	38.0	1.000019
67500.0	49.5	-66.7		83.5	559.8	280.2	31.3	1.000019
68000.0	48.3	-67.5		81.8	560.7	294.4	24.8	1.000018
68500.0	47.1	-67.5		79.9	560.4	302.5	20.6	1.000018
69000.0	45.9	-67.5		77.7	558.9	299.9	21.4	1.000017
69500.0	44.8	-66.9		75.7	559.5	297.4	22.0	1.000017
70000.0	43.7	-66.5		73.7	560.1	290.0	24.3	1.000016
70500.0	42.6	-66.1		71.7	560.6	284.0	27.0	1.000016
71000.0	41.6	-65.6		69.8	561.2	280.0	30.3	1.000016
71500.0	40.5	-65.2		67.9	561.8	276.1	34.1	1.000015
72000.0	39.5	-64.8		66.1	562.3	273.1	38.1	1.000015
72500.0	38.6	-64.4		64.4	562.8	273.1	40.3	1.000014
73000.0	37.6	-65.3		63.1	561.6	273.2	42.5	1.000014
73500.0	36.7	-66.3		61.6	560.4	274.3	42.6	1.000014
74000.0	35.8	-67.2		60.5	559.1	275.7	40.8	1.000013
74500.0	34.9	-68.1		59.3	557.9	273.3	39.1	1.000013
75000.0	34.0	-67.8		57.8	558.3	282.4	36.5	1.000013
75500.0	33.2	-67.1		56.1	559.2	285.9	33.9	1.000013
76000.0	32.4	-66.5		54.6	560.1	290.4	31.8	1.000012
76500.0	31.6	-65.8		53.1	561.0	290.0	30.5	1.000012
77000.0	30.8	-65.1		51.6	561.9	302.1	29.4	1.000011
77500.0	30.0	-64.4		50.2	562.0	309.1	28.9	1.000011
78000.0	29.3	-64.4		48.9	562.9	310.4	29.0	1.000011
78500.0	28.6	-64.3		47.7	563.0	323.4	28.8	1.000011
79000.0	27.9	-64.3		46.5	563.0	330.2	27.4	1.000010
79500.0	27.2	-64.3		45.4	563.0	337.6	26.4	1.000010
80000.0	26.6	-64.2		44.3	563.1	343.7	24.9	1.000010
80500.0	25.9	-64.2		43.2	563.1	349.6	23.2	1.000010
81000.0	25.3	-64.2		42.1	563.2			1.000009
81500.0	24.7	-64.1		41.1	563.2			1.000009
82000.0	24.1	-64.1		40.1	563.3			1.000009

STATION ALTITUDE 989.00 FEET MSL  
 14 FEB. 80  
 OBSERVATION NO. 83

MANDATORY LEVELS  
 0450020003  
 WHITE SANDS

GEODETIC COORDINATES  
 52.40043 LAT DEG  
 106.37033 LON DEG

TABLE 9

PRESSURE MILLIBARS	GEOPOTENTIAL FEET	TEMPERATURE AIR DEGREES CENTIGRADE	REL. HUMID. PERCENT	WIND DATA		
				DIRECTION DEGREES(TN)	SPEED KNOTS	SPEED KNOTS
850.0	4883.	9.6	67.	237.1	6.3	6.3
800.0	6524.	5.5	79.	264.4	19.3	19.3
750.0	8246.	1.8	93.	266.2	21.6	21.6
700.0	10065.	-7	96.	240.8	23.1	23.1
650.0	11994.	-4.8	98.	240.5	28.1	28.1
600.0	14049.	-8.3	97.	257.2	33.2	33.2
550.0	16251.	-12.2	96.	252.5	35.3	35.3
500.0	18623.	-16.9	86.	248.6	37.2	37.2
450.0	21191.	-22.6	83.	245.8	40.4	40.4
400.0	23990.	-29.5	73.	243.0	44.7	44.7
350.0	27067.	-37.4	75.	239.9	43.3	43.3
300.0	30486.	-47.6	75.	238.5	49.8	49.8
250.0	34358.	-55.3		258.9	71.6	71.6
200.0	39056.	-62.1		266.0	64.9	64.9
175.0	41884.	-53.5		267.5	89.4	89.4
150.0	45121.	-56.4		261.0	68.9	68.9
125.0	48881.	-61.5		247.9	60.8	60.8
100.0	53329.	-68.7		258.5	69.4	69.4
80.0	57758.	-66.1		264.5	29.4	29.4
70.0	60385.	-68.3		271.5	36.6	36.6
60.0	63436.	-66.8		269.5	55.6	55.6
50.0	67055.	-66.4		283.4	34.5	34.5
40.0	71484.	-65.0		274.0	30.0	30.0
30.0	77207.	-64.4		309.0	28.9	28.9
25.0	80867.	-64.2				

\*\* AT LEAST ONE ASSUMED RELATIVE HUMIDITY VALUE WAS USED IN THE INTERPOLATION.

D  
FI  
g