

AD-A087 470

ARMY ELECTRONICS RESEARCH AND DEVELOPMENT COMMAND WS--ETC F/8 4/2
12821A LANCE, MISSILE NUMBER 3671, ROUND NUMBER 341 ECL, 28 FEB--ETC(U)
FEB 80

UNCLASSIFIED

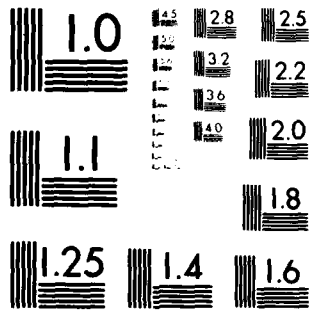
ERADCOM/ASL-DR-1140

ML

1 of 1
85-46



END
DATE
FILMED
9-80
DTIC



MICROCOPY RESOLUTION TEST CHART
NATIONAL BUREAU OF STANDARDS-1963-A

LEVEL II

12

APPROVED FOR PUBLIC RELEASE; DISTRIBUTION UNLIMITED

DR 1140
February 1980
AJ

Handwritten mark

ADA 087470

METEOROLOGICAL DATA REPORT

12821A LANCE
Missile Number 3871
Round Number 341 ECL
28 February 1980

by

White Sands Meteorological Team

THIS DOCUMENT IS BEST QUALITY PRACTICABLE.
THE COPY FURNISHED TO DDC CONTAINED A
SIGNIFICANT NUMBER OF PAGES WHICH DO NOT
REPRODUCE LEGIBLY.

ATMOSPHERIC SCIENCES LABORATORY
WHITE SANDS MISSILE RANGE, NEW MEXICO

DTIC
ELECTE
AUG 5 1980
S D D

FILE COPY

ECOM

UNITED STATES ARMY ELECTRONICS COMMAND 80

8 4 205

DISPOSITION INSTRUCTIONS

Destroy this report when it is no longer needed. Do not return to the originator.

DISCLAIMER

The findings in this report are not to be construed as an official Department of the Army position, unless so designated by other authorized documents.

The citation of trade names and names of manufacturers in this report is not to be construed as official Government endorsement or approval of commercial products or services referenced herein.

DISCLAIMER NOTICE

THIS DOCUMENT IS BEST QUALITY PRACTICABLE. THE COPY FURNISHED TO DTIC CONTAINED A SIGNIFICANT NUMBER OF PAGES WHICH DO NOT REPRODUCE LEGIBLY.

UNCLASSIFIED

SECURITY CLASSIFICATION OF THIS PAGE (When Data Entered)

14

ERAD COM/ASL REPORT DOCUMENTATION PAGE

READ INSTRUCTIONS BEFORE COMPLETING FORM

1. REPORT NUMBER DR-1140	2. GOVT ACCESSION NO. AD-A087470	3. RECIPIENT'S CATALOG NUMBER
4. TITLE (and Subtitle) 12821A LANCE, Missile Number 3871, Round Number 341 ECL, 23 February 1980		5. TYPE OF REPORT & PERIOD COVERED
7. AUTHOR(s) White Sands Meteorological Team		8. CONTRACT OR GRANT NUMBER(s) DA Task 1F665702D127402
9. PERFORMING ORGANIZATION NAME AND ADDRESS data rept.		10. PROGRAM ELEMENT, PROJECT, TASK AREA & WORK UNIT NUMBERS
11. CONTROLLING OFFICE NAME AND ADDRESS US Army Electronics Research & Development Cmd Atmospheric Sciences Laboratory White Sands Missile Range, NM 88002		12. REPORT DATE FEBRUARY 1980
14. MONITORING AGENCY NAME & ADDRESS (if different from Controlling Office) US Army Electronics Research & Development Cmd Adelphi, MD 20783		13. NUMBER OF PAGES 21
15. SECURITY CLASS. (of this report) UNCLASSIFIED		15a. DECLASSIFICATION/DOWNGRADING SCHEDULE
16. DISTRIBUTION STATEMENT (of this Report) <div style="border: 1px solid black; padding: 5px; text-align: center;"> DISTRIBUTION STATEMENT A Approved for public release; Distribution Unlimited </div>		
17. DISTRIBUTION STATEMENT (of the abstract entered in Block 20, if different from Report) Approved for public release; distribution unlimited.		
18. SUPPLEMENTARY NOTES		
19. KEY WORDS (Continue on reverse side if necessary and identify by block number)		
20. ABSTRACT (Continue on reverse side if necessary and identify by block number) Meteorological data gathered for the launching of 12821A LANCE, Missile Number 3871, Round Number 341 ECL are presented in tabular form.		

6

9

11

16

17

12 21

410663

Handwritten signature

CONTENTS

PAGE

INTRODUCTION----- 1

DISCUSSION----- 1

TABLES

1. Surface Observation Taken at 1615 MST at RATSCAT----- 2

2. RATSCAT Pilot Balloon Measured Wind Data at 1605 MST----- 3

3. RATSCAT Pilot Balloon Measured Wind Data at 1615 MST----- 4

4. JALLEN Significant Level Data at 1605 MST----- 6

5. JALLEN Upper Air Data at 1605 MST----- 7

6. JALLEN Mandatory Levels at 1605 MST----- 11

7. Holloman Significant Level Data at 1630 MST----- 12

8. Holloman Upper Air Data at 1630 MST----- 13

9. Holloman Mandatory Levels at 1630 MST----- 17

Accession For	
NTIS GRA&I	<input checked="" type="checkbox"/>
DDC TAB	<input type="checkbox"/>
Unannounced	<input type="checkbox"/>
Justification	
By _____	
Distribution/ _____	
Availability Codes	
Dist.	Avail and/or special
A	32

INTRODUCTION

12821A LANCE, Missile Number 3871, Round Number 341 ECL,
was launched from RATSCAT, White Sands Missile Range (WSMR), New Mexico,
at 1615:03 MST on 28 February 1980. The scheduled launch time was
1615 MST.

DISCUSSION

Meteorological data were recorded and reduced by the White Sands Meteorological Team, Atmospheric Sciences Laboratory (ASL), White Sands Missile Range, New Mexico. The data were obtained by the following methods:

1. Observations

a. Surface

(1) Standard surface observations to include pressure, temperature ($^{\circ}\text{C}$), relative humidity, dew point ($^{\circ}\text{C}$), density (gm/m^3), wind direction and speed, and cloud cover were made at the RATSCAT Met Site at T-0 minutes.

(2)

Monitor of wind speed and direction from one anemometer was also provided in the launch control room.

b. Upper Air

(1) Low level wind data were obtained from RAPS T-9 pibal observation at:

SITE AND ALTITUDE

RATSCAT 7,000 and 12,000 FEET

(2) Air structure data (rawinsonde) were collected at the following Met Sites. Data were collected from surface to high as possible feet in 500-foot increments.

SITE AND TIME

**JALLEN 1605 MST
HOLLOMAN 1630 MST**

TABLE 1. Surface Observation taken at 1615 MST,
 28 February 1980, at RATSCAT, 12821A LANCE,
 Missile Number 3871, Round Number 341 ECL.

ELEVATION	3957	FT/MSL
PRESSURE	871.7	MBS
TEMPERATURE	26.3	°C
RELATIVE HUMIDITY	15	
DEW POINT	-2.5	°C
DENSITY	1010	GM/M ³
WIND SPEED	3	KTS
WIND DIRECTION	060	DEGREES
CLOUD COVER	8	Ci

PILOT BALLOON MEASURED WIND DATA

TABLE 2

RELEASED FROM RATSCAT DATE 28 February 1980 TIME 1605 MST
 COORDINATES (WSTM) X 531,312.04 Y 357,958.56 3964.61

NOTE: WIND DIRECTIONS ARE REFERENCED TO TRUE NORTH.

HEIGHTS ARE METERS AGL OR FEET AGL XX.

HEIGHT AGL	DIRECTION DEGREES	SPEED KTS	HEIGHT AGL	DIRECTION DEGREES	SPEED KTS	HEIGHT AGL	DIRECTION DEGREES	SPEED KTS
SFC	060	03	3100	269	08	6200	283	19
100	MISG	MISG	3200	292	09	6300	287	18
200	021	06	3300	284	09	6400	280	23
300	008	07	3400	278	08	6500	280	22
400	023	10	3500	292	12	6600	284	22
500	058	08	3600	298	13	6700	292	19
600	030	14	3700	297	13	6800	298	21
700	024	12	3800	278	15	6900	297	21
800	055	11	3900	271	14	7000	282	19
900	050	13	4000	272	16			
1000	052	10	4100	270	16			
1100	038	08	4200	277	16			
1200	035	09	4300	278	18			
1300	043	09	4400	285	16			
1400	044	09	4500	279	15			
1500	025	07	4600	289	21			
1600	007	09	4700	286	20			
1700	351	04	4800	278	16			
1800	270	05	4900	292	19			
1900	252	03	5000	281	18			
2000	CALM	CALM	5100	285	19			
2100	228	03	5200	286	19			
2200	333	02	5300	283	19			
2300	326	04	5400	291	17			
2400	296	05	5500	290	20			
2500	331	04	5600	285	16			
2600	205	04	5700	282	16			
2700	256	04	5800	274	20			
2800	273	07	5900	281	22			
2900	270	06	6000	282	20			
3000	263	07	6100	285	20			

PILOT BALLOON MEASURED WIND DATA

PAGE 1 of 2 PAGES

TABLE 3RELEASED FROM RATSCAT DATE 28 February 1980 TIME 1615 MSTCOORDINATES (WSTM) X= 513,312.04 Y= 357,958.56 Z= 3964.61

NOTE: WIND DIRECTIONS ARE REFERENCED TO TRUE NORTH.

HEIGHTS ARE METERS AGL XX OR FEET AGL .

HEIGHT AGL	DIRECTION DEGREES	SPEED KTS	HEIGHT AGL	DIRECTION DEGREES	SPEED KTS	HEIGHT AGL	DIRECTION DEGREES	SPEED KTS
SFC	065	04	3100	261	09	6200	283	21
100	MISG	MISG	3200	260	11	6300	285	20
200	017	04	3300	270	10	6400	283	17
300	021	05	3400	284	12	6500	287	21
400	026	07	3500	301	15	6600	287	21
500	063	16	3600	264	11	6700	287	17
600	041	14	3700	264	11	6800	284	16
700	043	19	3800	250	11	6900	279	20
800	026	14	3900	252	14	7000	271	23
900	012	18	4000	282	19	7100	285	23
1000	007	13	4100	276	18	7200	278	21
1100	018	12	4200	272	17	7300	275	23
1200	013	09	4300	270	16	7400	280	22
1300	012	09	4400	275	12	7500	276	21
1400	047	06	4500	272	15	7600	284	20
1500	332	06	4600	259	16	7700	288	16
1600	312	07	4700	267	16	7800	276	19
1700	339	10	4800	273	17	7900	277	16
1800	033	10	4900	274	15	8000	278	13
1900	050	09	5000	284	15	8100	268	16
2000	191	01	5100	267	18	8200	286	23
2100	305	04	5200	277	19	8300	287	21
2200	263	04	5300	280	18	8400	263	26
2300	278	03	5400	281	16	8500	264	21
2400	291	04	5500	281	16	8600	288	15
2500	302	07	5600	285	19	8700	273	20
2600	286	10	5700	285	19	8800	275	19
2700	299	07	5800	283	18	8900	283	21
2800	283	08	5900	280	17	9000	285	20
2900	275	09	6000	283	18	9100	284	21
3000	261	08	6100	279	20	9200	288	19

STATION ALTITUDE 4051.00 FEET MSL
 28 FEB. 80 1605 HRS MST
 ASCLSSION NO. 60

SIGNIFICANT LEVEL DATA
 0590030000
 JALLEN

GEODETIC COORDINATES
 33.16712 LAT DEG
 106.49511 LON DEG

TABLE 4

PRESSURE MILLIBARS	GEOMETRIC ALTITUDE MSL FEET	TEMPERATURE		REL. HUM. PERCENT
		AIR DEGREES	DEWPOINT CENTIGRADE	
872.9	4051.0	22.7	-7.1	13.0
650.0	4305.7	20.3	-4.8	18.0
700.0	10161.8	6.0	-14.1	22.0
624.5	13186.2	-2.2	-17.4	30.0
568.0	15639.0	-7.2	-23.4	26.0
535.2	17151.3	-11.3	-25.0	31.0
500.0	18456.9	-14.6	-33.0	19.0
400.0	24262.5	-28.9	-42.0	25.0
345.4	27653.3	-38.0	-49.3	29.0
300.0	30795.9	-45.7		
250.0	34714.4	-54.9		
232.6	36220.4	-58.6		
227.8	36653.5	-57.1		
217.6	37607.1	-57.7		
208.2	38532.6	-54.2		
200.0	39380.3	-54.9		
194.6	39956.4	-55.2		
186.0	40912.8	-52.6		
160.8	43398.3	-54.5		
150.0	45458.1	-56.8		
134.4	47730.7	-60.9		
120.6	49946.6	-61.9		
107.8	52214.4	-66.0		
103.7	52996.1	-63.0		
100.0	53731.9	-64.2		
91.7	55469.5	-67.1		
84.2	57177.6	-65.0		
70.0	60003.7	-64.0		
50.0	67727.5	-63.0		
30.0	78266.6	-57.1		
25.4	81761.8	-55.7		

UPPER AIR DATA
 0590030000
 JALLEN

STATION ALTITUDE 4051.00 FEET MSL
 28 FEB. 60
 ASCENSION NO. 60

GEODETIC COORDINATES
 33.16712 LAT DEG
 100.49511 LONG DEG

TABLE 5

GEOMETRIC ALTITUDE MSL FEET	PRESSURE MILLIBARS	TEMPERATURE AIR DEGREES CENTIGRADE	REL. HUM. PERCENT	DENSITY GM/CUBIC METER	SPEED OF SOUND KNOTS	WIND DATA		INDEX OF REFRACTION
						DIRECTION DEGREES(TN)	SPEED KNOTS	
4051.0	872.9	22.7	13.0	1020.3	670.6	180.0	2.9	1.000244
4500.0	859.2	21.3	16.0	1014.8	669.1	179.9	2.2	1.000244
5000.0	844.0	19.8	18.1	1001.9	667.4	179.7	1.3	1.000242
5500.0	828.9	18.4	18.5	988.5	665.8	178.9	.5	1.000238
6000.0	814.0	17.1	18.9	975.3	664.3	304.2	1.5	1.000234
6500.0	799.4	15.8	19.3	962.2	662.7	304.9	4.6	1.000230
7000.0	785.0	14.4	19.6	949.4	661.2	302.6	7.4	1.000226
7500.0	770.9	13.1	20.0	936.8	659.6	300.1	10.1	1.000223
8000.0	757.1	11.8	20.4	924.3	658.1	295.7	11.6	1.000219
8500.0	743.5	10.4	20.8	912.1	656.5	290.5	12.6	1.000216
9000.0	730.1	9.1	21.1	900.0	654.9	286.9	13.4	1.000212
9500.0	717.0	7.8	21.5	888.1	653.3	284.0	14.2	1.000209
10000.0	704.1	6.4	21.9	876.4	651.8	278.9	13.8	1.000205
10500.0	691.1	5.1	22.9	864.4	650.2	273.2	13.5	1.000202
11000.0	678.2	3.7	24.2	852.4	648.6	271.5	14.2	1.000199
11500.0	665.5	2.4	25.5	840.6	647.0	270.3	15.0	1.000197
12000.0	653.1	1.0	26.9	829.0	645.4	271.2	16.4	1.000194
12500.0	640.9	-.3	28.2	817.6	643.8	271.6	17.3	1.000191
13000.0	628.9	-1.7	29.5	806.3	642.2	270.3	15.3	1.000188
13500.0	617.0	-2.8	29.5	794.4	640.6	268.5	12.9	1.000185
14000.0	605.2	-3.9	28.7	782.2	639.6	265.0	9.1	1.000181
14500.0	593.6	-4.9	27.9	770.2	638.3	259.6	5.6	1.000178
15000.0	582.2	-5.9	27.0	758.4	637.1	254.3	3.4	1.000175
15500.0	571.1	-6.9	26.2	746.6	635.9	241.1	1.5	1.000171
16000.0	560.0	-8.2	27.2	735.8	634.3	150.1	.4	1.000169
16500.0	549.1	-9.5	28.8	725.2	632.7	110.2	.4	1.000166
17000.0	538.4	-10.9	30.5	714.8	631.1	279.1	.4	1.000164
17500.0	527.8	-12.0	28.5	703.7	629.8	271.6	1.9	1.000161
18000.0	517.4	-12.9	25.0	692.4	628.6	268.3	3.8	1.000157
18500.0	507.2	-13.9	21.5	681.3	627.4	262.4	5.4	1.000154
19000.0	497.1	-15.0	19.2	670.5	626.0	256.4	6.9	1.000151
19500.0	486.9	-16.3	19.7	660.2	624.4	249.6	8.3	1.000149
20000.0	477.0	-17.6	20.3	650.1	622.8	242.6	9.6	1.000147
20500.0	467.2	-18.9	20.6	640.1	621.2	235.0	11.0	1.000144
21000.0	457.7	-20.3	21.4	630.3	619.6	227.5	12.6	1.000142
21500.0	448.3	-21.6	21.9	620.7	618.0	221.0	13.5	1.000140
22000.0	439.2	-22.9	22.5	611.5	616.3	214.1	13.7	1.000137
22500.0	430.2	-24.2	23.0	602.0	614.7	207.7	13.6	1.000135
23000.0	421.4	-25.6	23.6	592.8	613.0	200.7	12.9	1.000133
23500.0	412.8	-26.9	24.2	583.8	611.4	196.3	12.6	1.000131

UPPER AIR DATA
 05900300LU
 JALLER!

STATION ALTITUDE 4051.00 FEET MSL
 28 FEB. 80 1605 HRS MST
 ASCENSION NO. 60

GEODETIC COORDINATES
 33.16712 LAT NEG
 106.49511 LONG DEG

TABLE 5 (CONT)

GEO-METRIC ALTITUDE MSL FEET	PRESSURE MILLIBARS	TEMPERATURE		REL. HUM. PERCENT	DENSITY GM/CUBIC METER	SPEED OF SOUND KNOTS	WIND DATA		INDEX OF REFRACTION
		AIR DEGREES CENTIGRADE	DEWPOINT CENTIGRADE				DIRECTION DEGREES(TN)	SPEED KNOTS	
24000.0	404.4	-28.2	-42.1	24.7	575.0	639.8	194.9	12.7	1.000129
24500.0	395.9	-29.5	-43.1	25.3	566.1	636.1	195.4	12.7	1.000127
25000.0	387.4	-30.9	-44.0	25.9	557.0	636.4	197.5	12.6	1.000125
25500.0	379.1	-32.2	-45.0	26.5	548.1	634.7	197.2	12.6	1.000123
26000.0	371.0	-33.6	-46.0	27.0	539.4	633.0	195.9	13.0	1.000121
26500.0	363.1	-34.9	-47.0	27.6	530.9	631.3	189.5	13.8	1.000119
27000.0	355.3	-36.2	-48.0	28.2	522.4	629.7	182.9	14.8	1.000117
27500.0	347.7	-37.6	-49.0	28.8	514.2	627.9	179.4	15.8	1.000115
28000.0	340.1	-38.8	-51.1	25.8**	505.6	626.3	176.9	16.8	1.000113
28500.0	332.5	-40.1	-53.8	21.2**	497.0	624.8	175.0	18.8	1.000111
29000.0	325.2	-41.3	-54.8	16.6**	488.6	623.2	174.0	21.0	1.000109
29500.0	317.9	-42.5	-60.4	12.0**	480.3	621.6	173.0	22.3	1.000107
30000.0	310.9	-43.7	-65.0	7.3**	472.1	620.1	172.0	23.0	1.000105
30500.0	304.0	-45.0	-72.8	2.7**	464.1	618.5	174.1	22.5	1.000103
31000.0	297.2	-46.2			456.1	616.9	177.0	21.1	1.000102
31500.0	290.3	-47.4			447.9	615.4	181.1	20.2	1.000100
32000.0	283.7	-48.5			439.9	613.9	180.1	19.6	1.000098
32500.0	277.1	-49.7			432.1	612.4	189.5	18.3	1.000096
33000.0	270.8	-50.9			424.4	610.8	191.7	16.1	1.000095
33500.0	264.5	-52.0			416.8	609.3	195.0	14.2	1.000093
34000.0	258.4	-53.2			409.4	607.7	202.5	12.7	1.000091
34500.0	252.5	-54.4			402.1	606.2	209.4	12.2	1.000090
35000.0	246.6	-55.6			394.9	604.6	213.1	13.5	1.000088
35500.0	240.8	-56.8			387.7	603.0	213.0	15.2	1.000086
36000.0	235.1	-58.1			380.7	601.4	213.1	18.5	1.000085
36500.0	229.5	-57.6			373.9	600.0	211.9	21.9	1.000083
37000.0	224.0	-57.3			367.6	598.5	212.2	25.1	1.000081
37500.0	218.7	-57.6			361.6	597.3	212.4	28.4	1.000079
38000.0	213.6	-56.2			355.5	596.1	212.0	29.9	1.000076
38500.0	208.5	-54.3			349.9	594.8	212.0	31.1	1.000074
39000.0	203.6	-54.6			342.0	593.5	211.6	31.6	1.000072
39500.0	198.9	-55.0			334.6	592.2	209.4	31.9	1.000071
40000.0	194.2	-55.1			327.5	590.9	206.7	34.3	1.000069
40500.0	189.7	-53.7			320.2	589.6	204.0	38.1	1.000067
41000.0	185.2	-52.7			313.1	588.3	203.0	43.1	1.000065
41500.0	180.9	-53.0			306.3	587.1	203.0	51.0	1.000064
42000.0	176.7	-53.3			299.9	585.9	209.3	59.0	1.000062
42500.0	172.6	-53.6			293.9	584.6	211.7	61.5	1.000061
43000.0	168.6	-54.0			287.9	583.4	214.0	63.6	1.000060
43500.0	164.6	-54.3			282.0	582.2	210.1	65.8	1.000058

** AT LEAST ONE ASSUMED RELATIVE HUMIDITY VALUE WAS USED IN THE INTERPOLATION.

STATION ALTITUDE 4051.00 FEET MSL
 28 FEB. 69 1605 HRS MST
 ASCENSION: NO. 60

UPPER AIR DATA
 0590030000
 JALLEN

GEODETIC COORDINATES
 33.16712 LAT DEG
 106.49511 LON DEG

TABLE 5 (CONT)

GEOMETRIC ALTITUDE MSL FEET	PRESSURE MILLIBARS	AIR TEMPERATURE DEGREES	REL. HUM. PERCENT	DENSITY G/M ³	SPEED OF SOUND KNOTS	*IND. DATA DIRECTION DEGREES(TN)	SPEED KNOTS	INDEX OF REFRACTION
4400.0	160.8	-54.6		250.3	575.9	218.4	62.1	1.000057
4450.0	157.0	-55.4		251.1	574.9	221.1	58.1	1.000056
4500.0	153.3	-56.1		246.1	573.9	224.1	54.3	1.000055
4550.0	149.7	-56.9		241.1	572.9	227.3	43.3	1.000054
4600.0	146.1	-57.8		236.4	571.7	232.7	32.2	1.000053
4650.0	142.6	-58.7		231.7	570.5	224.4	34.3	1.000052
4700.0	139.2	-59.6		227.1	569.3	219.2	37.8	1.000051
4750.0	135.9	-60.5		222.6	568.1	215.2	43.1	1.000050
4800.0	132.6	-61.0		217.8	567.4	213.1	48.2	1.000049
4850.0	129.4	-61.2		212.8	567.1	217.1	45.1	1.000047
4900.0	126.3	-61.5		207.9	566.8	221.6	42.2	1.000046
4950.0	123.3	-61.7		203.1	566.5	225.5	40.1	1.000045
5000.0	120.3	-62.0		198.4	566.1	227.9	38.8	1.000044
5050.0	117.3	-62.9		194.4	564.9	230.5	37.7	1.000043
5100.0	114.3	-63.8		190.5	563.7	232.7	37.1	1.000042
5150.0	111.7	-64.7		186.6	562.5	234.9	36.8	1.000042
5200.0	108.9	-65.6		182.9	561.2	237.0	36.6	1.000041
5250.0	106.3	-64.9		177.8	562.2	240.5	34.6	1.000040
5300.0	103.7	-63.0		171.9	564.7	244.5	32.8	1.000038
5350.0	101.2	-63.9		166.3	563.7	247.9	30.5	1.000037
5400.0	98.7	-64.6		164.9	562.5	249.3	26.5	1.000037
5450.0	96.2	-65.5		161.4	561.4	251.1	22.6	1.000036
5500.0	93.9	-66.3		158.1	560.3	246.5	20.8	1.000035
5550.0	91.6	-67.1		154.8	559.3	237.4	20.6	1.000034
5600.0	89.3	-66.4		150.5	560.1	228.3	20.9	1.000034
5650.0	87.1	-65.8		146.4	560.9	226.1	20.2	1.000033
5700.0	85.0	-65.2		142.3	561.8	224.0	19.4	1.000032
5750.0	82.9	-64.9		138.6	562.2	224.2	17.7	1.000031
5800.0	80.8	-64.8		135.1	562.4	232.9	13.9	1.000030
5850.0	78.9	-64.6		131.8	562.5	247.5	10.6	1.000029
5900.0	76.9	-64.5		128.4	562.7	252.7	8.5	1.000029
5950.0	75.0	-64.4		125.2	562.9	244.3	6.8	1.000028
6000.0	73.2	-64.2		122.1	563.1	230.9	5.4	1.000027
6050.0	71.4	-64.1		119.0	563.3	220.2	4.7	1.000027
6100.0	69.7	-64.0		116.0	563.4	208.1	4.3	1.000026
6150.0	68.0	-63.9		113.2	563.5	194.5	4.0	1.000025
6200.0	66.3	-63.8		110.4	563.6	178.9	3.6	1.000025
6250.0	64.7	-63.8		107.6	563.7	160.6	3.4	1.000024
6300.0	63.1	-63.7		105.0	563.8	147.7	4.0	1.000023
6350.0	61.6	-63.6		102.4	563.9	143.2	5.1	1.000023

STATION ALTITUDE 4051.00 FEET MSL
28 FEB. 80 1605 HRS MST
ASCENSION NO. 60

UPPER AIR DATA
6590030000
JALLEN

GEODETIC COORDINATES
33.16712 LAT DEG
106.49511 LON DEG

TABLE 5 (CONT)

GEOMETRIC ALTITUDE MSL FEET	PRESSURE MILLIBARS	TEMPERATURE AIR DEGREES CENTIGRADE	REL. HUM. PERCENT	DENSITY GV/CUBIC METER	SPEED OF SOUND KNOTS	WIND DATA		INDEX OF REFRACTION
						DIRECTION DEGREES(TN)	SPEED KNOTS	
6400.0	60.1	-63.5		99.9	504.0	140.3	6.3	1.000022
6450.0	58.6	-63.5		97.4	504.1	139.2	6.5	1.000022
6500.0	57.2	-63.4		95.0	504.2	138.8	6.2	1.000021
6550.0	55.8	-63.3		92.7	504.3	138.4	5.9	1.000021
6600.0	54.4	-63.3		90.4	504.4	138.3	5.6	1.000020
6650.0	53.1	-63.2		88.1	504.5	119.0	5.6	1.000020
6700.0	51.8	-63.1		85.0	504.6	109.6	6.1	1.000019
6750.0	50.6	-63.0		83.8	504.7	107.7	6.4	1.000019
6800.0	49.3	-62.8		81.7	505.0	100.8	6.8	1.000018
6850.0	48.2	-62.6		79.7	505.3	100.0	7.1	1.000018
6900.0	47.0	-62.3		77.7	505.7	100.2	7.4	1.000017
6950.0	45.9	-62.0		75.7	506.1	94.7	7.8	1.000017
7000.0	44.8	-61.7		73.8	506.5	89.6	8.3	1.000016
7050.0	43.7	-61.4		71.9	506.8	77.4	9.0	1.000016
7100.0	42.7	-61.2		70.1	507.2	67.1	10.0	1.000016
7150.0	41.6	-60.9		68.3	507.6	58.9	11.3	1.000015
7200.0	40.6	-60.6		66.6	508.0	59.2	11.5	1.000015
7250.0	39.7	-60.3		64.9	508.3	59.4	11.8	1.000014
7300.0	38.7	-60.0		63.3	508.7	59.6	12.0	1.000014
7350.0	37.8	-59.8		61.7	509.1	64.2	13.0	1.000014
7400.0	36.9	-59.5		60.2	509.5	67.9	14.1	1.000013
7450.0	36.0	-59.2		58.6	509.8	71.1	15.2	1.000013
7500.0	35.1	-58.9		57.2	570.2	70.6	16.1	1.000013
7550.0	34.3	-58.6		55.7	570.6	69.9	16.8	1.000012
7600.0	33.5	-58.4		54.3	570.9	69.2	17.6	1.000012
7650.0	32.7	-58.1		52.9	571.3	68.4	18.2	1.000012
7700.0	31.9	-57.8		51.6	571.7	67.6	18.7	1.000011
7750.0	31.1	-57.5		50.3	572.1	66.9	19.3	1.000011
7800.0	30.4	-57.2		49.0	572.4	66.7	19.2	1.000011
7850.0	29.7	-57.0		47.8	572.8	67.3	18.3	1.000011
7900.0	29.0	-56.8		46.6	573.0	67.9	17.3	1.000010
7950.0	28.3	-56.6		45.5	573.3			1.000010
8000.0	27.6	-56.4		44.4	573.5			1.000010
8050.0	27.0	-56.2		43.3	573.8			1.000009
8100.0	26.3	-56.0		42.3	574.1			1.000009
8150.0	25.7	-55.8		41.2	574.3			1.000009

STATION ALTITUDE 4051.00 FEET MSL
 28 FEB. 80 1605 HRS MST
 ASCENSION NO. 60

MANDATORY LEVELS
 0520030000
 JALLEN

GEODETIC COORDINATES
 33.16712 LAT DEG
 106.49511 LONG DEG

TABLE 6

PRESSURE GEOPOTENTIAL		TEMPERATURE		REL. HUM.		WIND DATA	
MILLIBARS	FEET	AIR DEGREES	DEW POINT DEGREES	PERCENT	DIRECTION DEGREES(TN)	SPEED KNOTS	
850.0	4803.	20.3	-4.8	18.	179.8	1.6	
800.0	6502.	15.8	-7.5	19.	304.9	4.7	
750.0	8202.	11.1	-10.0	21.	292.6	12.1	
700.0	10152.	6.0	-14.1	22.	277.1	13.7	
650.0	12124.	.7	-16.1	27.	271.4	10.8	
600.0	14211.	-4.3	-19.9	28.	262.4	7.4	
550.0	16441.	-9.4	-24.2	29.	109.3	.4	
500.0	18832.	-14.6	-33.0	19.	257.9	6.4	
450.0	21416.	-21.4	-37.4	22.	221.8	13.4	
400.0	24224.	-28.9	-42.0	25.	194.3	12.8	
350.0	27305.	-37.2	-48.7	29.	180.3	15.5	
300.0	30737.	-45.7			175.7	21.7	
250.0	34642.	-54.9			211.0	12.7	
200.0	39289.	-54.9			207.4	31.8	
175.0	42105.	-53.4			210.2	60.2	
150.0	45340.	-56.8			226.8	44.7	
125.0	49078.	-61.6			223.5	41.2	
100.0	53571.	-64.2			248.4	28.8	
80.0	58021.	-64.7			237.3	12.6	
70.0	60700.	-64.0			211.3	4.4	
60.0	63802.	-63.5			140.3	0.6	
50.0	67479.	-63.0			107.3	0.6	
40.0	72013.	-60.4			59.3	11.7	
30.0	77940.	-57.1			60.9	10.8	

** AT LEAST ONE ASSUMED RELATIVE HUMIDITY VALUE WAS USED IN THE INTERPOLATION.

UPPER AIR DATA
 050010065
 HOLLOWAY

STATION ALTITUDE 4126.59 FEET MSL
 28 FEB. 60
 1630 HRS MST
 ASCENSION NO. 65

GEODETIC COORDINATES
 32.88865 LAT LEG
 106.09965 LONG LEG

TABLE 8

GEOMETRIC ALTITUDE MSL FEET	PRESSURE MILLIBARS	TEMPERATURE AIR DEGREES	TEMPERATURE DEWPOINT CENTIGRADE	REL. HUM. PERCENT	DENSITY GM/CUBIC METER	SPEED OF SOUND KNOTS	WIND DATA		INDEX OF REFRACTION
							DIRECTION DEGREES(TW)	SPEED KNOTS	
4126.6	871.3	24.2	-5.0	14.0	1013.9	672.4	0.0	0.0	1.000245
4500.0	860.0	21.5	4.2	32.0	1012.9	670.0	9.3	0.9	1.000262
5000.0	844.8	20.1	3.0	32.2	1009.1	669.3	9.3	2.0	1.000256
5500.0	829.7	18.7	2.0	32.7	987.0	656.7	9.3	3.1	1.000251
6000.0	814.6	17.4	1.1	33.3	974.1	655.0	9.3	4.3	1.000247
6500.0	800.2	16.0	.1	33.9	961.4	653.4	356.7	4.9	1.000242
7000.0	785.8	14.6	-9	34.4	943.8	651.7	343.3	5.7	1.000238
7500.0	771.7	13.2	-1.9	35.0	930.5	650.1	322.8	7.1	1.000233
8000.0	757.9	11.8	-2.9	35.5	924.3	653.4	309.0	8.9	1.000229
8500.0	744.3	10.4	-4.0	36.1	912.3	655.8	300.4	10.9	1.000225
9000.0	730.9	9.0	-5.0	36.7	902.4	655.1	297.3	12.7	1.000221
9500.0	717.8	7.6	-6.0	37.2	896.8	653.5	295.6	14.3	1.000217
10000.0	704.9	6.2	-7.1	37.8	877.3	651.8	295.4	15.4	1.000213
10500.0	692.0	4.9	-8.0	38.6	865.5	650.2	295.7	16.5	1.000209
11000.0	679.2	3.5	-8.9	39.5	853.7	648.6	295.4	17.4	1.000206
11500.0	666.3	2.2	-9.9	40.4	842.0	646.9	295.8	17.7	1.000202
12000.0	654.0	.9	-10.9	40.7	831.1	645.4	297.1	17.7	1.000198
12500.0	641.4	-2.2	-12.1	40.0	817.4	644.1	297.0	15.9	1.000194
13000.0	629.1	-3.3	-13.3	39.3	804.9	642.8	298.3	14.0	1.000191
13500.0	616.9	-4.5	-14.5	39.6	792.7	641.5	298.6	11.0	1.000187
14000.0	605.1	-3.4	-15.7	37.9	780.6	640.2	299.9	9.7	1.000183
14500.0	593.4	-4.5	-16.9	37.2	768.0	638.8	303.0	7.5	1.000180
15000.0	582.0	-5.6	-18.1	36.5	757.1	637.5	308.0	5.2	1.000176
15500.0	570.8	-6.7	-19.3	35.8	745.6	636.2	325.0	2.6	1.000173
16000.0	559.8	-7.8	-20.5	35.1	734.3	634.9	20.7	1.1	1.000170
16500.0	549.0	-8.9	-21.7	34.4	723.1	633.6	95.6	.9	1.000167
17000.0	538.4	-10.0	-22.9	33.7	712.2	632.2	169.7	.3	1.000164
17500.0	528.1	-11.0	-24.1	33.0	701.4	630.9	280.0	2.5	1.000161
18000.0	517.9	-12.1	-25.3	32.3	690.8	629.0	283.3	4.9	1.000158
18500.0	507.9	-13.2	-26.5	31.6	680.4	628.3	283.4	7.1	1.000155
19000.0	498.0	-14.4	-27.7	31.0	670.1	626.9	278.7	8.7	1.000153
19500.0	487.9	-15.7	-28.8	31.2	659.8	625.2	265.0	9.1	1.000150
20000.0	477.9	-17.0	-29.9	31.4	649.7	623.0	254.2	10.2	1.000148
20500.0	468.2	-18.3	-31.0	31.6	639.8	622.0	245.4	11.6	1.000145
21000.0	458.6	-19.7	-32.2	31.8	630.1	620.3	239.8	12.7	1.000143
21500.0	449.3	-21.0	-33.3	32.0	620.5	618.7	235.9	12.4	1.000140
22000.0	440.1	-22.3	-34.4	32.1	611.1	617.1	230.7	11.7	1.000138
22500.0	431.1	-23.7	-35.5	32.3	601.9	615.4	225.3	10.7	1.000136
23000.0	422.3	-25.0	-36.7	32.5	592.8	613.8	218.0	10.4	1.000134
23500.0	413.7	-26.3	-37.8	32.7	583.6	612.1	211.3	10.6	1.000131

UPPER AIR DATA
 0590010065
 HOLLOWAY

STATION ALTITUDE 4126.59 FEET MSL
 20 FEB. 80 1630 HRS MST
 ASCENSION NO. 65

GEODETIC COORDINATES
 32.88855 LAT DEG
 106.09965 LON DEG

TABLE 8 (CONT)

GEOMETRIC ALTITUDE MSL FEET	PRESSURE MILLIBARS	AIR TEMPERATURE DEGREES	TEMPERATURE DEGREE CENTIGRADE	REL. HUMID. PERCENT	DENSITY GM/CUBIC METER	SPEED OF SOUND KNOTS	WIND DIRECTION DEGREES (TR)	WIND SPEED KNOTS	INDEX OF REFRACTION
2400.0	405.3	-27.7	-30.9	32.9	575.0	610.5	208.1	10.7	1.000129
2500.0	396.9	-29.0	-40.1	33.0	566.1	608.8	208.9	10.6	1.000127
2500.0	388.4	-30.2	-41.2	33.2	558.9	607.2	204.9	10.7	1.000125
2550.0	380.0	-31.5	-42.3	33.3	547.8	605.6	201.8	11.2	1.000123
2600.0	371.9	-32.8	-43.4	33.4	533.9	604.0	198.9	11.9	1.000121
2650.0	363.9	-34.1	-44.5	33.5	530.1	602.4	190.0	12.9	1.000119
2700.0	356.1	-35.3	-45.7	33.6	521.5	600.8	192.1	14.1	1.000117
2750.0	348.4	-36.6	-46.8	33.7	513.1	599.2	187.0	15.5	1.000115
2800.0	340.9	-37.9	-47.9	33.8	504.8	597.5	183.8	17.3	1.000113
2850.0	333.6	-39.2	-49.0	33.9	498.7	595.9	182.0	19.3	1.000111
2900.0	326.3	-40.5	-50.9	31.0**	490.5	594.3	183.1	21.0	1.000109
2950.0	319.1	-41.7	-54.6	22.7**	480.3	592.7	166.4	22.2	1.000107
3000.0	312.0	-43.0	-59.3	14.4**	472.2	591.0	188.7	22.6	1.000105
3050.0	305.0	-44.3	-66.7	6.1**	464.3	589.4	189.4	21.3	1.000103
3100.0	298.2	-45.5			456.3	587.8	191.3	19.7	1.000102
3150.0	291.4	-46.6			448.1	586.3	196.3	17.6	1.000100
3200.0	284.7	-47.9			440.1	584.8	200.7	15.9	1.000098
3250.0	278.2	-48.9			432.2	583.4	213.8	15.4	1.000096
3300.0	271.8	-50.1			424.4	581.9	221.2	15.2	1.000095
3350.0	265.5	-51.2			415.8	580.4	225.6	14.0	1.000093
3400.0	259.5	-52.4			407.4	578.9	230.9	12.9	1.000091
3450.0	253.5	-53.5			402.1	577.4	231.8	13.8	1.000090
3500.0	247.6	-54.6			394.7	575.9	231.8	14.9	1.000088
3550.0	241.8	-55.6			387.3	574.6	229.7	17.0	1.000086
3600.0	236.1	-56.3			379.4	573.6	227.8	19.5	1.000085
3650.0	230.6	-57.7			369.4	574.5	227.0	22.0	1.000082
3700.0	225.1	-58.1			361.4	573.9	227.6	24.4	1.000080
3750.0	219.8	-58.6			353.6	573.3	228.0	26.8	1.000079
3800.0	214.6	-59.1			342.8	575.3	223.1	26.8	1.000076
3850.0	209.6	-59.0			331.7	578.0	228.1	30.9	1.000074
3900.0	204.7	-59.7			325.0	577.1	224.4	32.1	1.000072
3950.0	199.9	-54.4			313.4	578.2	220.8	33.4	1.000071
4000.0	195.3	-53.0			309.0	578.1	219.2	37.1	1.000069
4050.0	190.8	-51.6			299.9	579.9	218.3	41.7	1.000067
4100.0	186.3	-51.1			292.3	580.5	220.1	46.8	1.000065
4150.0	182.0	-51.5			280.1	580.0	223.0	53.0	1.000064
4200.0	177.8	-51.9			268.0	579.5	228.4	58.9	1.000062
4250.0	173.7	-52.3			274.0	579.0	229.5	61.8	1.000061
4300.0	169.7	-52.7			263.1	578.4	232.3	64.8	1.000060
4350.0	165.7	-53.1			262.4	577.8	234.3	64.4	1.000058

** AT LEAST ONE ASSUMED RELATIVE HUMIDITY VALUE WAS USED IN THE INTERPOLATION.

UPPER AIR DATA
 0590010000
 HOLLOWAY

STATION ALTITUDE 4126.59 FEET MSL
 28 FEB. 60 1630 HRS MST
 ASCENSION NO. 65

GEODETIC COORDINATES
 32.84865 LAT DEG
 106.09965 LONG DEG

TABLE 8 (CONT)

GEOMETRIC ALTITUDE MSL FEET	PRESSURE MILLIBARS	AIR TEMPERATURE DEGREES CENTIGRADE	REL. HUM. PERCENT	DENSITY G/CM ³ METER	SOUND SPEED KNOTS	WIND DIRECTION DEGREES (TN)	WIND SPEED KNOTS	INDEX OF REFRACTION
44000.0	161.9	-53.8		257.1	577.0	236.1	62.4	1.000057
44500.0	158.1	-54.5		251.8	576.1	237.5	59.2	1.000056
45000.0	154.4	-55.2		245.7	575.2	237.5	53.6	1.000055
45500.0	150.8	-55.9		241.7	574.3	237.6	48.0	1.000054
46000.0	147.2	-56.2		235.8	573.8	237.8	44.6	1.000053
46500.0	143.7	-57.3		231.9	572.4	238.1	41.3	1.000052
47000.0	140.3	-58.5		227.7	570.8	238.8	40.0	1.000051
47500.0	136.9	-59.7		223.5	569.2	239.9	40.1	1.000050
48000.0	133.7	-60.2		218.7	568.5	240.9	40.2	1.000049
48500.0	130.5	-60.0		213.3	568.7	241.5	39.7	1.000048
49000.0	127.3	-60.0		208.1	568.8	242.2	39.2	1.000046
49500.0	124.2	-60.8		203.8	567.7	242.9	38.0	1.000045
50000.0	121.2	-61.5		199.6	566.7	243.5	36.3	1.000044
50500.0	118.3	-62.3		195.5	565.7	244.3	34.7	1.000044
51000.0	115.4	-63.1		191.4	564.7	246.5	33.3	1.000043
51500.0	112.6	-63.8		187.5	563.6	248.6	32.0	1.000042
52000.0	109.9	-64.4		183.4	562.9	251.6	30.9	1.000041
52500.0	107.2	-64.2		179.8	563.1	254.6	30.0	1.000040
53000.0	104.6	-64.1		174.3	563.3	258.2	29.2	1.000039
53500.0	102.0	-63.9		169.9	563.5	256.2	27.3	1.000038
54000.0	99.5	-63.9		165.7	563.5	253.6	25.5	1.000037
54500.0	97.1	-64.7		162.3	562.5	251.5	24.1	1.000036
55000.0	94.7	-65.5		158.6	561.5	249.6	22.8	1.000035
55500.0	92.4	-66.2		155.5	560.4	245.7	21.7	1.000035
56000.0	90.1	-65.8		151.4	561.0	245.6	19.9	1.000034
56500.0	87.9	-65.0		147.1	562.1	245.6	18.1	1.000033
57000.0	85.7	-64.3		143.0	563.0	245.0	16.2	1.000032
57500.0	83.6	-64.2		139.4	563.2	242.5	14.4	1.000031
58000.0	81.6	-64.0		135.9	563.3	239.4	12.6	1.000030
58500.0	79.6	-63.9		132.6	563.5	238.5	11.5	1.000030
59000.0	77.7	-63.8		129.2	563.7	240.1	10.9	1.000029
59500.0	75.8	-63.7		125.0	563.8	241.9	10.3	1.000028
60000.0	73.9	-63.6		122.9	564.0	241.2	9.2	1.000027
60500.0	72.1	-63.4		119.8	564.2	239.6	8.0	1.000027
61000.0	70.4	-63.3		115.8	564.3	236.6	6.7	1.000026
61500.0	68.7	-63.2		113.9	564.5	222.6	5.0	1.000025
62000.0	67.0	-63.1		111.1	564.6	197.7	3.8	1.000025
62500.0	65.4	-63.0		105.4	564.7	171.2	3.7	1.000024
63000.0	63.8	-62.9		105.7	564.8	162.0	4.1	1.000024
63500.0	62.2	-62.8		103.1	565.0	154.6	4.6	1.000023

UPPER AIR DATA
 0590C10065
 HOLLOWMAN

STATION ALTITUDE 4126.59 FEET MSL
 28 FEB. 80 1630 HRS MST
 ASCENSION NO. 65

GEODETIC COORDINATES
 32.88865 LAT DEG
 106.09965 LON DEG

TABLE 8 (CONT)

GEOMETRIC ALTITUDE MSL FEET	PRESSURE MILLIBARS	TEMPERATURE		REL. HUM. PERCENT	DENSITY GM/CM ³	SPEED OF SOUND KNOTS	WIND DATA		INDEX OF REFRACTION
		AIR DEGREES	WET POINT CENTIGRADE				DIRECTION DEGREES(TN)	SPEED KNOTS	
6400.0	60.7	-62.8		100.5	565.1	153.6	4.9	1.000022	
6450.0	59.2	-62.7		98.1	565.2	157.9	5.0	1.000022	
6500.0	57.8	-62.6		95.6	565.3	161.9	5.0	1.000021	
6550.0	56.4	-62.5		93.3	565.5	160.6	5.0	1.000021	
6600.0	55.0	-62.4		91.0	565.6	157.3	5.0	1.000020	
6650.0	53.7	-62.3		88.7	565.7	154.0	4.9	1.000020	
6700.0	52.4	-62.2		86.5	565.9	140.9	4.6	1.000019	
6750.0	51.1	-62.1		84.4	566.0	126.1	4.6	1.000019	
6800.0	49.9	-62.0		82.3	566.1	112.2	4.9	1.000018	
6850.0	48.7	-61.7		80.2	566.5	98.3	7.6	1.000018	
6900.0	47.5	-61.4		78.2	567.0	91.9	10.5	1.000017	
6950.0	46.4	-61.0		76.2	567.4	88.2	13.5	1.000017	
7000.0	45.3	-60.7		74.3	567.8	87.7	15.1	1.000017	
7050.0	44.2	-60.4		72.4	568.2	87.3	16.7	1.000016	
7100.0	43.2	-60.1		70.6	568.6	87.0	18.3	1.000016	
7150.0	42.1	-59.8		68.8	569.0	87.7	16.9	1.000015	
7200.0	41.1	-59.5		67.1	569.4	88.5	15.5	1.000015	
7250.0	40.2	-59.2		65.4	569.8	89.5	14.1	1.000015	
7300.0	39.2	-58.9		63.7	570.3	81.7	16.0	1.000014	
7350.0	38.3	-58.6		62.1	570.7	74.6	19.1	1.000014	
7400.0	37.3	-58.3		60.6	571.1	69.5	22.4	1.000013	
7450.0	36.5	-58.0		59.0	571.5			1.000013	
7500.0	35.6	-57.7		57.5	571.9			1.000013	
7550.0	34.7	-57.3		56.1	572.3			1.000012	
7600.0	33.9	-57.0		54.7	572.7			1.000012	
7650.0	33.1	-56.7		53.3	573.1			1.000012	
7700.0	32.3	-56.4		51.9	573.5			1.000012	

STATION ALTITUDE 4126.59 FEET MSL
 28 FEB. 60 1630 HRS MST
 ASCENSION NO. 65

MANDATORY LEVELS
 0590010065
 HOLLOWMAN

GEODETIC COORDINATES
 32.88865 LAT DEG
 106.09965 LON DEG

TABLE 9

PRESSURE GEOPOTENTIAL MILLIBARS	FEET	TEMPERATURE		REL. HUM. PERCENT	WIND DATA	
		AIR DEGREES CENTIGRADE	DEWPOINT CENTIGRADE		DIRECTION DEGREES(TN)	SPEED KNOTS
850.0	4828.	20.6	3.3	32.	9.3	1.6
800.0	6531.	15.9	.1	34.	355.8	4.9
750.0	8314.	11.0	-3.5	36.	303.4	10.2
700.0	10184.	5.7	-7.5	38.	295.3	15.8
650.0	12155.	.6	-11.3	41.	297.2	17.2
600.0	14246.	-3.9	-16.2	38.	301.3	6.6
550.0	16479.	-8.8	-21.6	34.	94.5	.9
500.0	18878.	-14.1	-27.5	31.	281.6	8.6
450.0	21467.	-20.9	-33.2	32.	236.0	12.4
400.0	24280.	-28.5	-39.7	33.	207.4	10.6
350.0	27370.	-36.4	-46.5	34.	187.9	15.2
300.0	30811.	-45.2			169.9	20.3
250.0	34726.	-54.2			231.6	14.4
200.0	39400.	-54.4			221.0	33.3
175.0	42238.	-52.2			228.4	60.8
150.0	45486.	-56.0			237.0	47.4
125.0	49241.	-60.6			242.7	38.4
100.0	53743.	-63.8			254.4	26.0
80.0	58210.	-63.9			238.2	11.7
70.0	60898.	-63.3			235.2	6.4
60.0	64011.	-62.7			155.5	4.9
50.0	67705.	-62.0			114.1	4.9
40.0	72263.	-59.2			89.6	14.0

** AT LEAST ONE ASSUMED RELATIVE HUMIDITY VALUE WAS USED IN THE INTERPOLATION.

END

DATE
FILMED

9-80

DTIC