

AD-A091 591

SOUTHEASTERN MASSACHUSETTS UNIV NORTH DARTMOUTH DEPT --ETC F/G 9/2
ON THE USE OF FISHER'S LINEAR DISCRIMINANT FOR IMAGE SEGMENTATI--ETC(U)
NOV 80 C YEN N00014-79-C-0494
SMU-EE-TR-80-10 NL

UNCLASSIFIED

1-1
AD
W/3000



END
RATE
FILMED
12-80
DTIC

END
DATE
FILMED
12-80
DTIC

AD A091591

LEVEL

12

15 Technical Report
14 Contract Number/N00014-79-C-0494

11 3 Nov 1980

12 14

6 ON THE USE OF FISHER'S LINEAR DISCRIMINANT FOR IMAGE SEGMENTATION

9 Technical Report

10 by
Chihsung Yen

Department of Electrical Engineering
Southeastern Massachusetts University
North Dartmouth, Massachusetts 02747

DISC
COLLECTED

Principal Investigator: Dr. C. H. Chen

*The support of the Statistics and Probability Program of the Office of Naval Research on this work is gratefully acknowledged.

DDC FILE COPY

UNPRACTICABLE.
SIGNED A
WHICH DO NOT
REI

DISTRIBUTION STATEMENT A
Approved for public release;
Distribution Unlimited

407932
80 11 10 013

DISCLAIMER NOTICE

THIS DOCUMENT IS BEST QUALITY PRACTICABLE. THE COPY FURNISHED TO DTIC CONTAINED A SIGNIFICANT NUMBER OF PAGES WHICH DO NOT REPRODUCE LEGIBLY.

ON THE USE OF FISHER'S LINEAR
DISCRIMINANT FOR IMAGE SEGMENTATION

1. Introduction

The application of supervised and unsupervised classification technique for image segmentation by computer has received much attention within the last few years (see e.g. [1],[2],[3]). In this report further segmentation results are presented on infrared and reconnaissance images using statistical pattern recognition method.

The available pictorial data are some pieces of infrared photographs and one piece of aerial photograph for reconnaissance applications. Each infrared image considered contains 64x64 points with 256 possible gray levels, and the aerial photo contains 300x400 points with same possible gray levels. Each picture is stored in the magtape line by line. The computer segmentation is performed at the PDP 11/45 minicomputer.

2. Algorithm and Definitions

A general introduction to the Fisher's linear discriminant analysis is in [3], [4]. Let x be a matrix measurement and X_i , $i = 1, 2$ be the collection of n_i measurements belonging to the i th class. The two classes considered are the target area and the background area. Define the sample mean matrix and the scatter matrices are

$$M_i = \frac{1}{n_i} \sum_{x \in X_i} x \quad ; i = 1, 2$$

$$S_i = \sum_{x \in X_i} (x - m_i) (x - m_i)'$$

$$M = \frac{1}{n} \sum_{x \in X_i} x = \text{mean of all samples}; \quad n = n_1 + n_2$$

$$S_w = S_1 + S_2 = \text{pooled scatter matrix}$$

Accession For	
NTIS GRA&I	<input checked="" type="checkbox"/>
DTIC TAB	<input type="checkbox"/>
Unannounced	<input type="checkbox"/>
Justification	
By _____	
Distribution/	
Availability Codes	
Dist	Avail and/or Special
A	234

Then the Fisher's linear discriminant computes

$$Y = W'X + W_0$$

where W = weight matrix

$$= \alpha n S_w^{-1} (m_1 - m_2); \alpha \text{ is an arbitrary constant.}$$

W_0 = threshold weight

$$= -M'W$$

Decision is to choose class 1 if $Y \geq 0$ and Class 2 otherwise.

Now consider the extension to noisy scenes. Let the noisy image be

$$x(i,j) = S(i,j) + n(i,j)$$

where $S(\cdot)$ and $n(\cdot)$ are the original image and noise respectively. The presence of observation noise (assumed to be additive white Gaussian with variance 1) creates a probability distribution of gray levels in the background as well as in the object. That is the object and the background gray levels, instead of being constant, are normally distributed with common variance 1 and means M_g and 0, respectively. Definition of the theoretical error probability as given in [5] is

$$P_e = \frac{1}{\sqrt{2\pi}} \int_{\frac{\sqrt{u}}{2}}^{\infty} e^{-\frac{y^2}{2}} dy$$

where $u = \text{norm of } [n(M_1 - M_2)' S_w^{-1} (M_1 - M_2)]$

= norm of A

= (dimension of A). $\text{Max}_{i,j} |a_{i,j}|$ (see e.g. [6])

The signal-to-noise ratio is defined as

$$\frac{S}{N} = \frac{M_g}{\text{noise variance}}$$

where the noise is Gaussian distributed with variance 1 and zero mean.

Other definition of $\frac{S}{N}$, like,

$$\frac{S}{N} = \frac{(M_s - \text{noise standard deviation})^2}{\text{noise variance}}$$

may not be appropriate to these image.

3. Experiments

3.1 Segmentation of the Alabama data base infrared images: Table 1a describes the number sequence of sub-pictures of Figures 1 & 2. Figure 1a is the original image and noisy images with different magnitude Gaussian noise added. Figure 1b is classification results using fixed weight matrix in [3]. Figure 1c is classification results using unfixed weight matrix which depends on each sub-picture. Figure 2 is same as Figure 1 except that targets are one tank and one jeep. Percentage of errors for noisy images and theoretical value are tabulated in Table 1b. Figure 3 is the relationship between the percentage (%) of errors and the signal-to-noise ratio ($\frac{S}{N}$) for the one target (upper figure) and the two targets (lower figure). The object boundaries can be completely extracted from segmented images by using the cross (Robert) gradient and Sobel operator [7] as shown in Figure 4.

3.2 Segmentation of the reconnaissance images. A diagram that illustrates the selection of learning samples is given in Figure 5. Figure 6a is the original image (256 x 256) with threshold = 150. Figure 6b, 6c are classified results. In Figure 6c, M_1 , M_2 samples are taken from regions III, I, respectively. Because of the gray level distribution in region II, the classified result given by Figure 6c is better than Figure 6b. Figure 7, 8 and 9 include additive white Gaussian noise with variance 1 and zero mean; $\frac{S}{N}$ are 0.2, 1.0, 2.0 respectively. In these three sets of figures, b and c are classified results by using fixed weight matrix, d and e are classified results by using weight matrix

which depends on each image. By following the same procedure to segment the whole image (300 x 400), the results are shown in Figure 10 to Figure 13.

4. Conclusion

These results suggest that the Fisher's linear discriminant performs very effectively in pixel classification and image segmentation. The classified results compare very favorably with theoretical analysis. However, the results are somewhat dependent upon the selection of learning samples. Further study will be made in using unsupervised classification techniques for image segmentation.

References

1. N. Ahuja, A. Rosenfeld and R. M. Haralick, "Neighbor gray levels as features in pixel classification," *Pattern Recognition*, vol. 12, no. 4, pp. 251-260, 1980.
2. S. L. Sclove, "Application of the Conditional Population-Mixture Model to Image Segmentation," 5th International Conference on Pattern Recognition, Miami Beach, Florida, December 1-4, 1980.
3. C. H. Chen and Chihlung Yen, "Two Experiments on Statistical Image Segmentation," SMU-EE-TR-80-9, pp. 1-2, 1980.
4. R. O. Duda and P. E. Hart, "Pattern Classification and Scene Analysis," Interscience Publication, pp. 151-154, 1973.
5. C. H. Chen, "Statistical Pattern Recognition," Hayden Book Company, pp. 10-16, 1973.
6. H. R. Schwartz, H. Rutishauser, E. Stiefel translated by P. Hertelendy, "Numerical Analysis of Symmetric Matrices," Prentice-Hall, pp. 8-9, 1973.
7. E. L. Hall, "Computer Image Processing and Recognition," Academic Press, pp. 403-407, 1979.

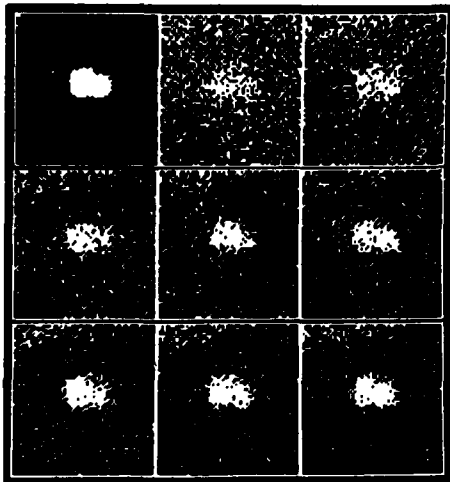


Fig. 1a

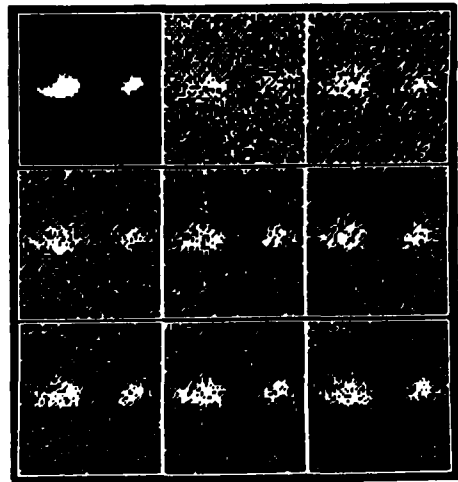


Fig. 2a

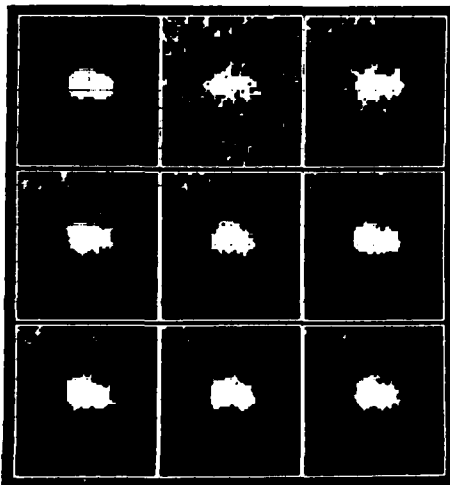


Fig. 1b

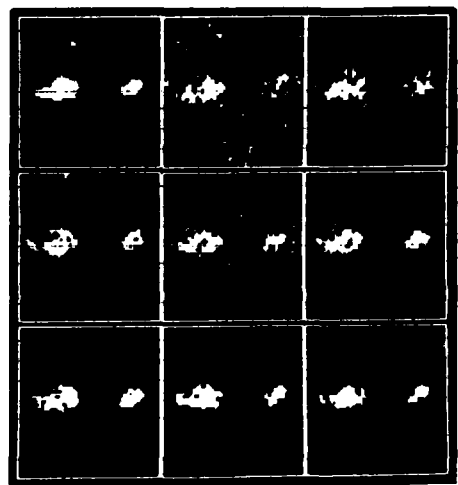


Fig. 2b

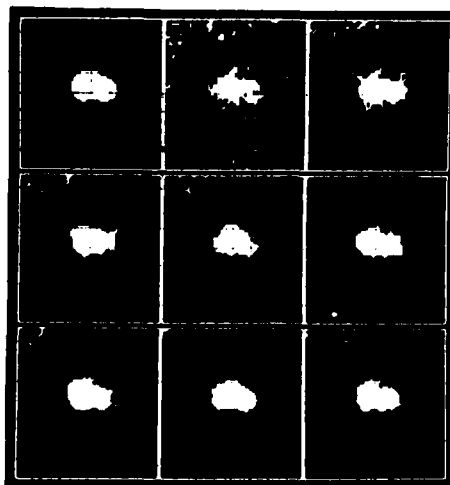


Fig. 1c

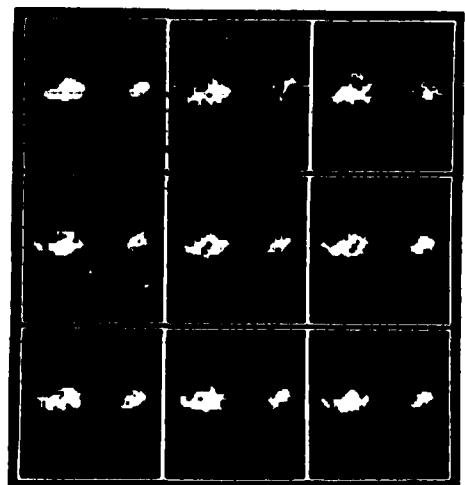


Fig. 2c

Table 1a

1	2	3
4	5	6
7	8	9

Table 1b Percentage of errors for noisy data

Test image	Signal-to-noise ratio	Single tank			Tank and Jeep		
		Fixed W	Unfixed W	Theoretical	Fixed W	Unfixed W	Theoretical
1	No noise	-	-	-	-	-	-
2	0.2	4.29	3.04	2.94	3.90	3.15	3.10
3	0.4	2.19	1.98	1.94	2.58	2.52	2.32
4	0.6	1.54	1.38	1.35	2.24	1.82	1.92
5	0.8	1.41	1.04	0.95	1.98	1.25	1.65
6	1.0	0.70	0.71	0.65	1.61	1.59	1.37
7	1.2	1.04	0.88	0.50	1.43	1.46	1.17
8	1.4	0.65	0.49	0.40	1.28	1.27	1.05
9	1.6	0.91	0.43	0.39	1.17	1.20	1.00

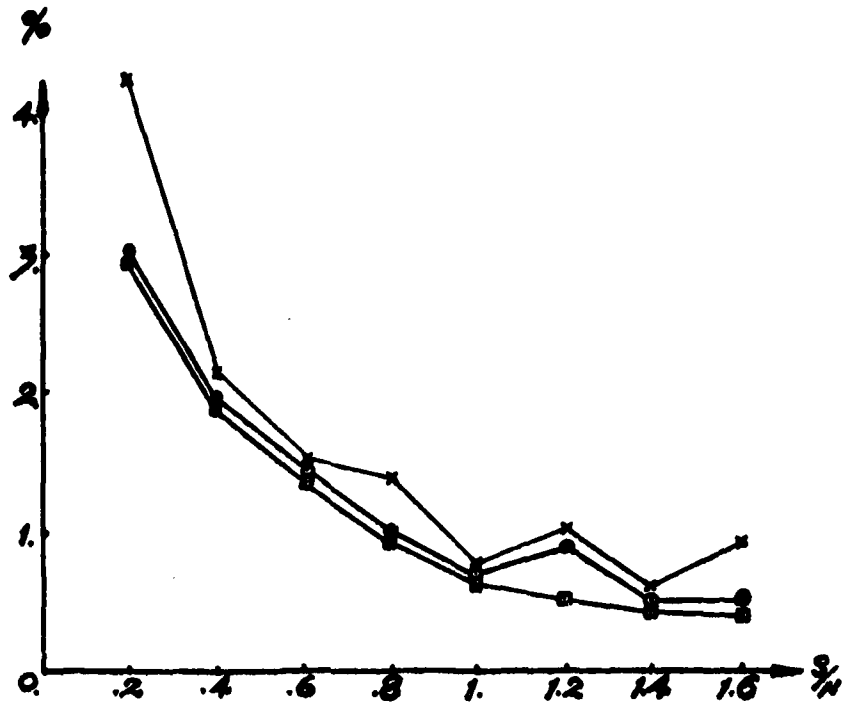


Fig. 3a

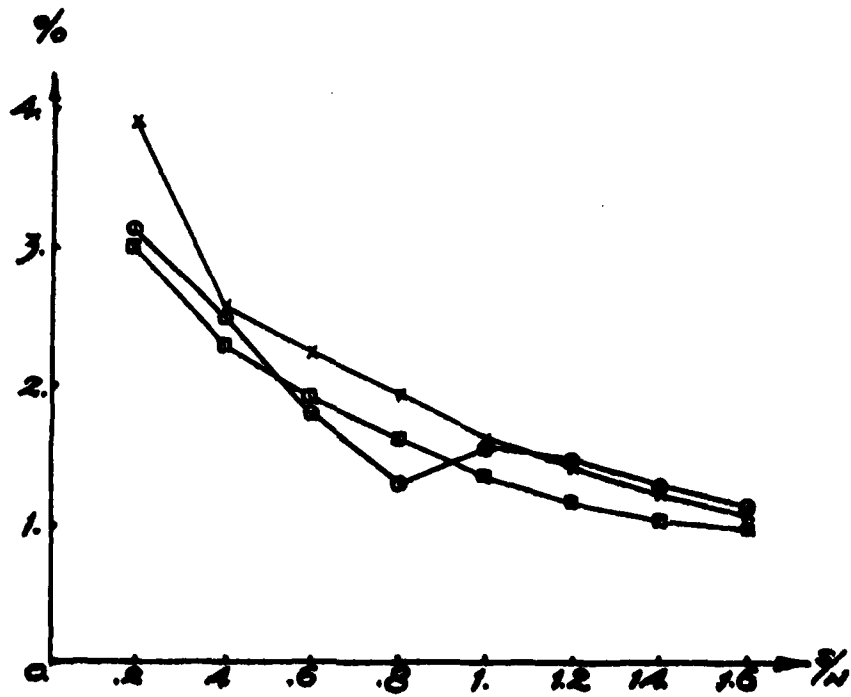


Fig. 3b

Notes: (1) * fixed weight matrix
 (2) o unfixed weight matrix
 (3) square theoretical

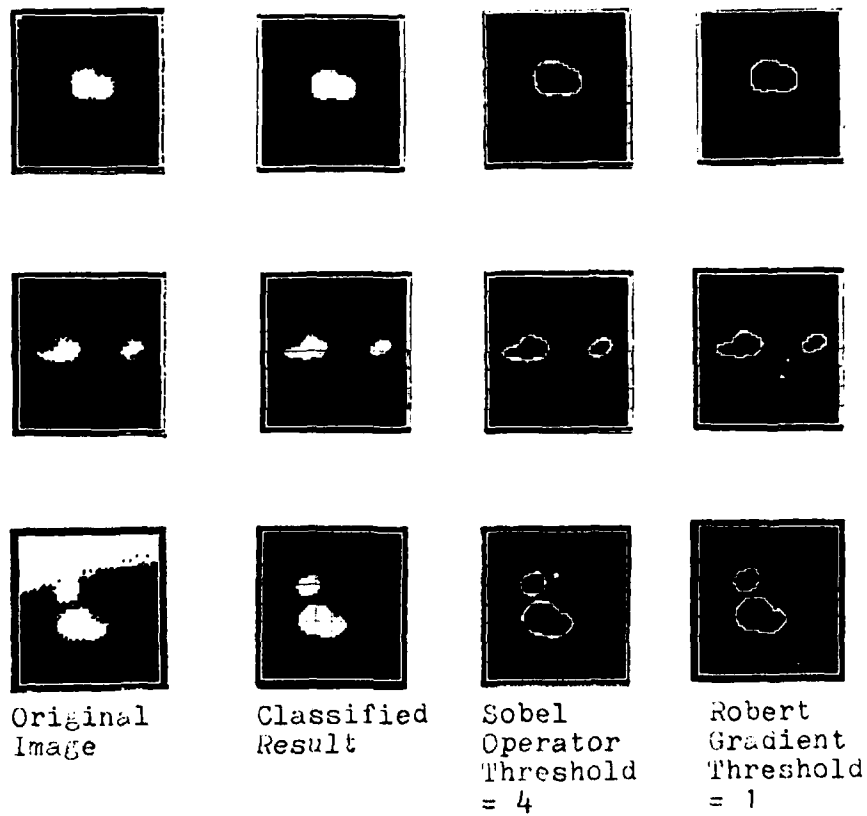


Fig. 4

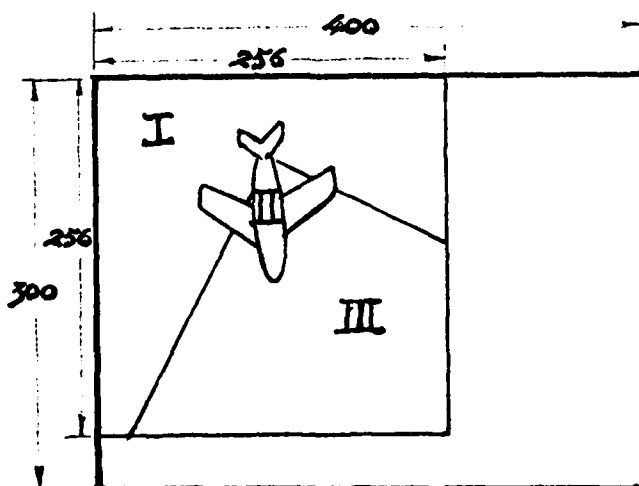


Fig. 5



Fig. 6a
TH= 150



Fig. 6b $M_1, M_2(II, I)$



Fig. 6c $M_1, M_2(III, I)$



Fig. 7a
TH= 150
s/n= .2



Fig. 7b $M_1, M_2(II, I)$



Fig. 7c $M_1, M_2(III, I)$



Fig. 7d $M_1, M_2(II, I)$



Fig. 7e $M_1, M_2(III, I)$



Fig. 8a
TH= 150
s/n= 1.



FIG. 8b $M_1, M_2(II, I)$



FIG. 8c $M_1, M_2(III, I)$



Fig. 8d $M_1, M_2(II, I)$



FIG. 8e $M_1, M_2(III, I)$



Fig. 9a
TH= 150
s/n= 2.



FIG. 9b $M_1, M_2(II, I)$



FIG. 9c $M_1, M_2(III, I)$



FIG. 9d $M_1, M_2(II, I)$



FIG. 9e $M_1, M_2(III, I)$



Fig. 10a
TH= 150

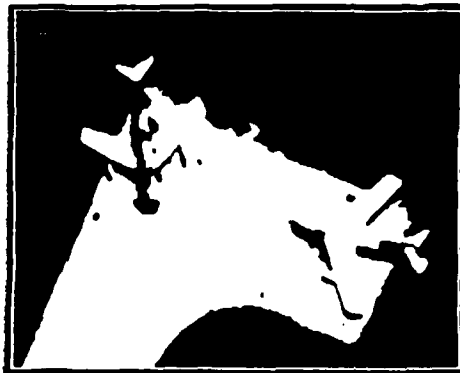


Fig. 10b $M_1, M_2(II, I)$



Fig. 10c $M_1, M_2(III, I)$



Fig. 11a
TH= 150
s/n= .2

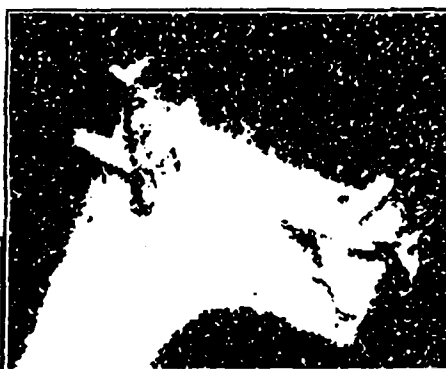


Fig. 11b $M_1, M_2(II, I)$



Fig. 11c $M_1, M_2(III, I)$

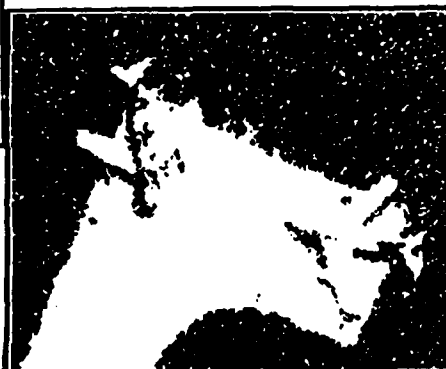


Fig. 11d $M_1, M_2(II, I)$



Fig. 11e $M_1, M_2(III, I)$



Fig. 12a
TH= 150
s/n= 1.



Fig. 12b $M_1, M_2(II, I)$



Fig. 12c $M_1, M_2(III, I)$



Fig. 12d $M_1, M_2(II, I)$



Fig. 12e $M_1, M_2(III, I)$

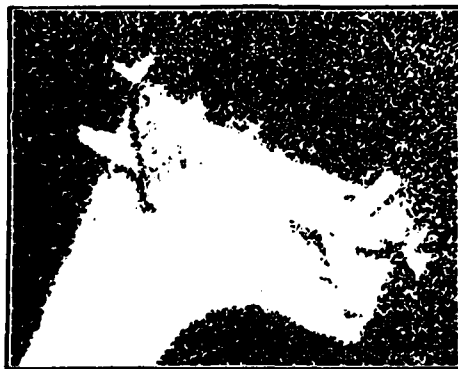


Fig. 13a
TH= 150
s/n= 2.



Fig. 13b $M_1, M_2(II, I)$



Fig. 13c $M_1, M_2(III, I)$



Fig. 13d $M_1, M_2(II, I)$



Fig. 13e $M_1, M_2(III, I)$

Unclassified

SECURITY CLASSIFICATION OF THIS PAGE (When Data Entered)

REPORT DOCUMENTATION PAGE		READ INSTRUCTIONS BEFORE COMPLETING FORM
1. REPORT NUMBER	2. GOVT ACCESSION NO. AD-A091594	3. RECIPIENT'S CATALOG NUMBER
4. TITLE (and Subtitle) On the Use of Fisher's Linear Discriminant for Image Segmentation	5. TYPE OF REPORT & PERIOD COVERED Technical Report	
7. AUTHOR(s) Chihsung Yen	6. PERFORMING ORG. REPORT NUMBER	
9. PERFORMING ORGANIZATION NAME AND ADDRESS Electrical Engineering Department Southeastern Massachusetts University North Dartmouth, MA 02747	8. CONTRACT OR GRANT NUMBER(s) N00014-79-C-0494	
11. CONTROLLING OFFICE NAME AND ADDRESS (Same as 4)	10. PROGRAM ELEMENT, PROJECT, TASK AREA & WORK UNIT NUMBERS	
14. MONITORING AGENCY NAME & ADDRESS (if different from Controlling Office) Statistics and Probability Program Office of Naval Research Arlington, VA 22217	12. REPORT DATE November 3, 1980	
	13. NUMBER OF PAGES 14	
16. DISTRIBUTION STATEMENT (of this Report) APPROVED FOR PUBLIC RELEASE: DISTRIBUTION UNLIMITED.	15. SECURITY CLASS. (of this report) Unclassified	
	15a. DECLASSIFICATION/DOWNGRADING SCHEDULE	
17. DISTRIBUTION STATEMENT (of the abstract entered in Block 20, if different from Report)		
18. SUPPLEMENTARY NOTES		
19. KEY WORDS (Continue on reverse side if necessary and identify by block number) Fisher's linear discriminant; image segmentation; noisy images, infrared image; reconnaissance image; theoretical error probability.		
20. ABSTRACT (Continue on reverse side if necessary and identify by block number) Further experimental results are reported on the use of Fisher's linear dis- criminant for segmentation of infrared images and reconnaissance images. Theoretical error probability computed compares very favorably with the experimental percentage misclassification.		

DD FORM 1 JAN 73 1473

EDITION OF 1 NOV 65 IS OBSOLETE

GPO : 1973 O - 314-560

SECURITY CLASSIFICATION OF THIS PAGE (When Data Entered)