

AD-A091 770

DEFENCE RESEARCH ESTABLISHMENT OTTAWA (ONTARIO)

F/G 9/2

FUNCTIONAL DESCRIPTION OF THE DREO LTN-51 ARINC BUS/LSLI-11 DRV--ETC(U)

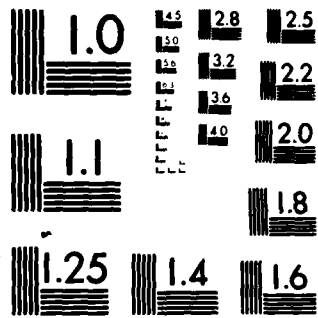
MAY 80 M VINNINS

DREO-TN-80-10

UNCLASSIFIED

NL

END
DATE
FORMED
1-1-1
DTIC



MICROCOPY RESOLUTION TEST CHART
 NATIONAL BUREAU OF STANDARDS-1963-A

ADA091770

RESEARCH AND DEVELOPMENT BRANCH

DEPARTMENT OF NATIONAL DEFENCE
CANADA

12) 232

DEFENCE RESEARCH ESTABLISHMENT OTTAWA

9) TECHNICAL NOTE NO. 80-10

10) Michael / Vinnins

6) FUNCTIONAL DESCRIPTION OF THE DREO LTN-51
ARINC BUS/LSI-11 DRVII-C INTERFACE,

by

Capt. M. Vinnins
Electromagnetics Section
Defence Electronics Division

11) May 80

14) DREO-TN-80-10

PROJECT NO.
32601

MAY 1980
OTTAWA

404576 alt

UNCLASSIFIED

ABSTRACT

An interface between the ARINC bus of a Litton LTN-51 navigation system and an LSI-11 minicomputer was designed and built for use in recording flight data on board a Convair 580 flight research aircraft.

The interface accepts serial, binary data from the LTN-51 and transfers this data to the LSI-11 through a Digital Equipment Corporation standard DRV11-C parallel interface.

RÉSUMÉ

Une interface entre le bus ARINC d'un système de navigation Litton LTN-51 et un mini-ordinateur LSI-11, a été conçue et assemblée pour utilisation lors d'enregistrements de données de vol à bord d'un avion de recherche Convair 580.

L'interface accepte des données binaires en série du LTN-51 et transfert ces données au LSI-11 au moyen d'une interface standard (parallèle) de DEC, le DRV11-C.

111

UNCLASSIFIED

Accession For	
NTIS GRA&I	<input checked="" type="checkbox"/>
DTIC TAB	<input type="checkbox"/>
Unannounced	<input type="checkbox"/>
Justification	
By _____	
Distribution/	
Availability Codes	
Dist	Avail and/or Special
A	

UNCLASSIFIED

TABLE OF CONTENTS

	<u>Page</u>
ABSTRACT/RÉSUMÉ	iii
TABLE OF CONTENTS	v
1. BACKGROUND	1
2. LTN-51 ARINC BUS	1
3. LSI-11 DRV11-C INTERFACE	1
3.1 DRINBUF	4
3.2 DROUTBUF	4
3.3 DRCSR	4
4. INTERFACE DESCRIPTION	5
4.1 WORK STRUCTURE AND SYNCHRONIZATION	5
4.2 CIRCUIT TIMING	6
4.2.1 ARINC DATA TIMING	6
4.2.2 DATA TRANSFER	6
4.3 SOFTWARE CONTROL	8
5. SUMMARY	11
APPENDIX A INTERFACE SCHEMATIC DIAGRAMS	12
APPENDIX B INTERFACE SOFTWARE	15

UNCLASSIFIED

1.0 BACKGROUND

An interface was designed and constructed at the Defence Research Establishment Ottawa (DREO) to receive serial binary data from the ARINC bus of the Litton LTN-51 inertial navigation system. In addition, it was required to transfer the data to an LSI-11 minicomputer through a standard Digital Equipment Corporation (DEC) DRV11-C 16-bit parallel interface for airborne recording purposes. Flight records were to be obtained using the NAE Convair 580 aircraft when testing various inertial navigation systems. The LTN-51 was used as the reference navigator for testing other systems and to support research and development work at DREO in the field of navigation. This Technical Note summarizes the operation of both the LTN-51 ARINC bus, the DRV11-C interface in the LSI-11 minicomputer, and describes the operation of the interface designed to operate between the two systems.

Because it was necessary to develop the interface quickly (to conform to Convair flight schedules) the hardware employed was not optimized in terms of space and power consumption. The components however, are inexpensive and are readily available.

2.0 LTN-51 ARINC BUS

The purpose of the interface is to collect data words from the Litton LTN-51 navigation system ARINC bus and record this data on magnetic tape through an LSI-11 minicomputer. The data from the LTN-51 is available on the ARINC bus in serial, binary format. The ARINC bus provides three, twisted-pair output lines; the data line, the synchronization line, and the clock line. The data rate is 13.8 KHz. The relationship between these lines is shown in Figure 1. Each data word from the LTN-51 is 32 bits long and is transmitted with the Most Significant Bit (MSB) first. The 8 MSB's comprise the address, the remaining 24 bits contain the data word. The synchronization line is used to signal the beginning of each 32-bit word as well as the end of the address bits (see Figure 1).

The binary data words available from the ARINC bus are listed in Figure 2. For the purposes of this interface, only 6 of these data words were desired:

- . Present Position Latitude
- . Present Position Longitude
- . Ground Speed
- . Track Angle
- . North-South Velocity
- . East-West Velocity

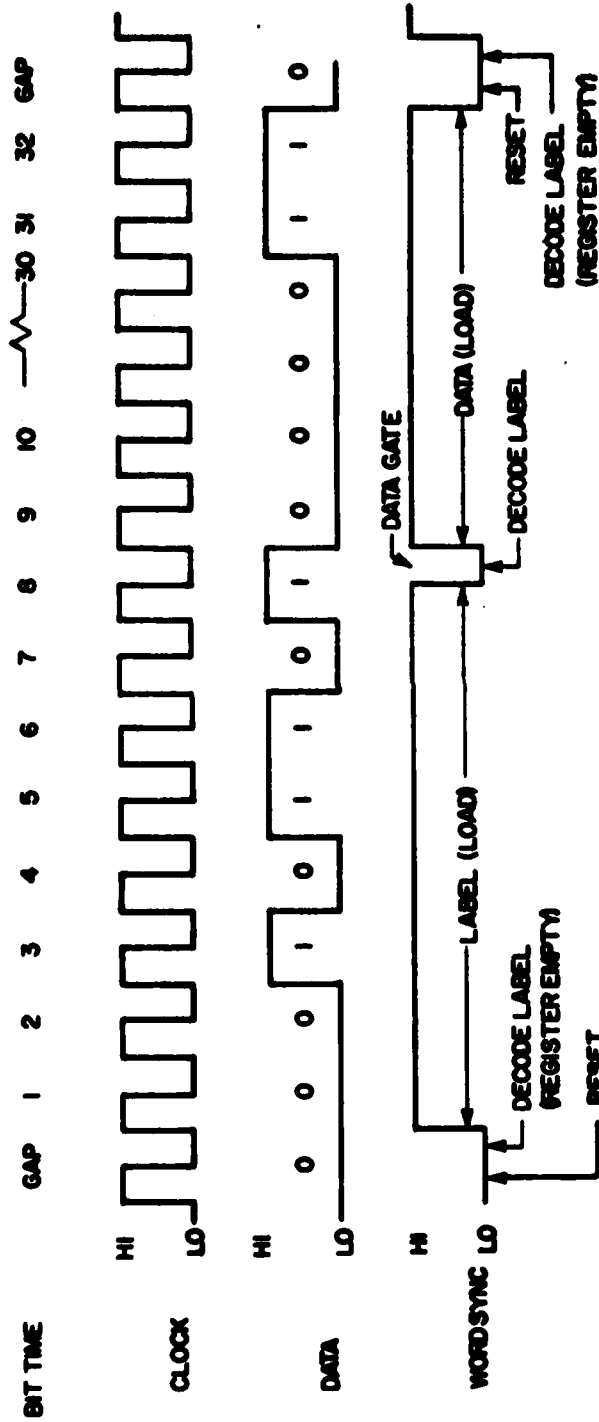


Figure 1. ARINC 6 - Wire Timing Diagram

Parameter	Qty	Range	Units	Resolution	Sig* Bits	Note
Present Position latitude	1	0 to $\pm \pi/2$	Radians	$2\pi/2^{18}$	17	Resolution is approx 5.0 arc-sec
Present-Position longitude	1	0 to $\pm \pi$	Radians	$2\pi/2^{18}$	17	Resolution is approx 5.0 arc-sec
Ground Speed	1	$\pm 3276.7K$	Knots	0.1 Knot	15	**
Actual track angle	1	0 to 2π	Radians	$2\pi/2^{13}$	12	Resolution is approx 2.64 arc-min
True heading	1	0 to 2π	Radians	$2\pi/2^{13}$	12	Resolution is approx 2.64 arc-min
Wind speed	1	$\pm 3276.7K$	Knots	0.1 Knot	15	**
Wind speed	1	$\pm \pi$	Radians	$2\pi/2^{13}$	12	Resolution is approx 2.64 arc-min
N/S velocity	1	$\pm 3276.7K$	Knots	0.1 Knot	15	
E/W velocity	1	$\pm 3276.7K$	Knots	0.1 Knot	15	**
Waypoint latitude	9	$\pm \pi/2$	Radians	$2\pi/2^{18}$ R	17	Resolution is approx 5.0 arc-sec
Waypoint longitude	9	$\pm \pi$	Radians	$2\pi/2^{18}$ R	17	Resolution is approx 5.0 arc-sec

Figure 2. LTN-51 Output-Binary Data

* Number of significant bits does not include sign

* Max range of two's complement data format - not system capability

3.0 LSI-11 DRV11-C INTERFACE

The DRV11-C is a 16-bit parallel interface contained within the LSI-11 minicomputer. It consists of 3 registers; a Status and Control Registers (DRCSR), an Output Buffer (DROUTBUF) and an Input Buffer (DRINBUF).

Interrupts from an external source are available on two lines called REQUEST A and REQUEST B and are serviced through vector addresses 300 and 304 respectively. Functioning of the DRV11-C is accomplished through software-controlled status bits in the Control and Status Register including INT ENB A (Bit 06) and INT ENB B (Bit 05) which allow enabling and disabling of the two interrupt requests and CSRO (Bit 0) and CSRI (Bit 01) which act as signal lines (flags) to external hardware. The three DRV11-C registers will now be described.

3.1 DRINBUF

DRINBUF is a read-only, 16-bit register which receives input data from external hardware. A 400 nsec. 'DATA TRANSMITTED' pulse is provided to the user while reading is taking place. The end of this pulse signals that the data has been read into the computer.

3.2 DROUTBUF

DROUTBUF is a 16-bit read/write register that is computer loaded and through which data can be transferred to a user's external hardware. A 400 nsec 'NEW DATA READY' pulse signals that data is ready to be transmitted. The trailing edge of this pulse signifies that the data has settled on the user's input lines.

3.3 DRCSR

DRCSR is a 16-bit status register consisting of:

- . Bit 15 - REQUEST B
- . Bit 07 - REQUEST A
- . Bit 06 - INT ENB B
- . Bit 05 - INT ENB A
- . Bit 01 - CSRI } user-defined
- . Bit 00 - CSRO } flags

4.0 INTERFACE DESCRIPTION

For the purposes of this interface, only 6 data words were required from the LTN-51. It was desirable to design the interface such that all six of the data words would be selected, read and stored within the interface before being transferred to the LSI-11 through the DRV11-C. This was necessary to reduce the workload on the computer since, in the desired application, several other functions were being performed by the LSI-11.

4.1 WORD STRUCTURE AND SYNCHRONIZATION

Data from the LTN-51 is received on the ARINC bus at 13.8KHz. The timing is such that the binary data words are sent in 32-bit sequences; (the first eight bits comprise the address).

The ARINC standard provides for a 4-bit minimum gap between words and a total of 11 words are sent.

The output voltage levels on the ARINC bus are 0 to 12 volts.

In order to make the data, synchronization and clock lines TTL compatible, HCPL 2630 optically-coupled gates are used at the front end of the interface. These gates provide good isolation and also help eliminate possible ground loops between the ARINC driver circuitry and the interface.

As shown in Figure 1, the synchronization signal goes to a high logic level at the beginning of each data word then returns to a low level for one bit time after the eighth bit before again going to a high level for the remainder of the word. This 'return to zero' function signals the end of the eight address bits.

For the purposes of the interface, it was decided to read all of the binary data words as they were sent on the ARINC bus. The six desired words were obtained by comparing the incoming address bits with a pre-selected address loaded from the LSI-11 into a digital comparator circuit on the interface. Knowing the order in which the data words appear on the ARINC bus allows the computer to load the successive addresses into the comparators provided the interface signals the computer as each address is matched and the data word stored.

Since the incoming data is in serial form, the interface is designed to store each 32-bit word in serial-to-parallel shift registers. Once all 32 bits of a word are stored, the address bits are compared to the pre-selected address on the comparators and, if the addresses match, the 24-bit data word is stored in parallel-to-parallel shift registers.

The synchronization pulse is used to effect the address comparison once all 32 bits of a word have been received. The intent here was to design a circuit that would use the fact that the synchronization pulse is effectively 32 bits long. By removing the 'return-to-zero' after the eighth bit, the lagging edge of this could then be used to signal the

the completed storage of each data word.

Once the data word is received the comparators are enabled, an address comparison is made and the data word is then permanently stored (a desired address) or rejected. If a received word is not one of the desired words, it remains in the serial-to-parallel shift registers until the next word begins and is then shifted out.

Enough data storage is provided in the interface to store six 24-bit data words. Once all six words have been received, an interrupt is sent to the LSI-11 and the data is transferred to the computer through a series of multiplexers.

4.2 CIRCUIT TIMING

A circuit diagram of the interface is shown in Appendix A. At several points in the interface, timing is critical. The two most important areas are in the timing control of the incoming data on the ARINC bus and the data transfer to the DRV11-C. Each of these control circuits will now be described in detail.

4.2.1 ARINC DATA TIMING

As described in the previous section, 32 bits of a data word are received and stored in a shift register before an address comparison is made in the comparators. This is accomplished by modifying the incoming synchronization pulse and using the lagging edge as a 'decode' pulse to enable the comparators. The circuit performing this function includes an SN7474 flip-flop, SN74160 decode counter and an SN7410 dual 3-input NAND gate. A timing diagram showing the signals at various points in the circuit is shown in Figure 3.

The incoming clock pulse is fed through the decode counter to drive the SN74164 shift registers. The SN7474 acts to remove the 'return to zero' of the incoming synchronization pulse. The net effect is to create a 'DECODE' pulse which is exactly 32 bits long. The lagging edge of this pulse is used to enable the SN74LS85 digital comparator inputs. As a result, address comparisons are performed once an entire word has been received and an immediate storage or rejection of the word can be performed depending on the address comparator output.

4.2.2 DATA TRANSFER

Data transfer to the LSI-11 also requires timing control. Once the six 24-bit data words are stored in parallel-in/parallel-out shift registers,

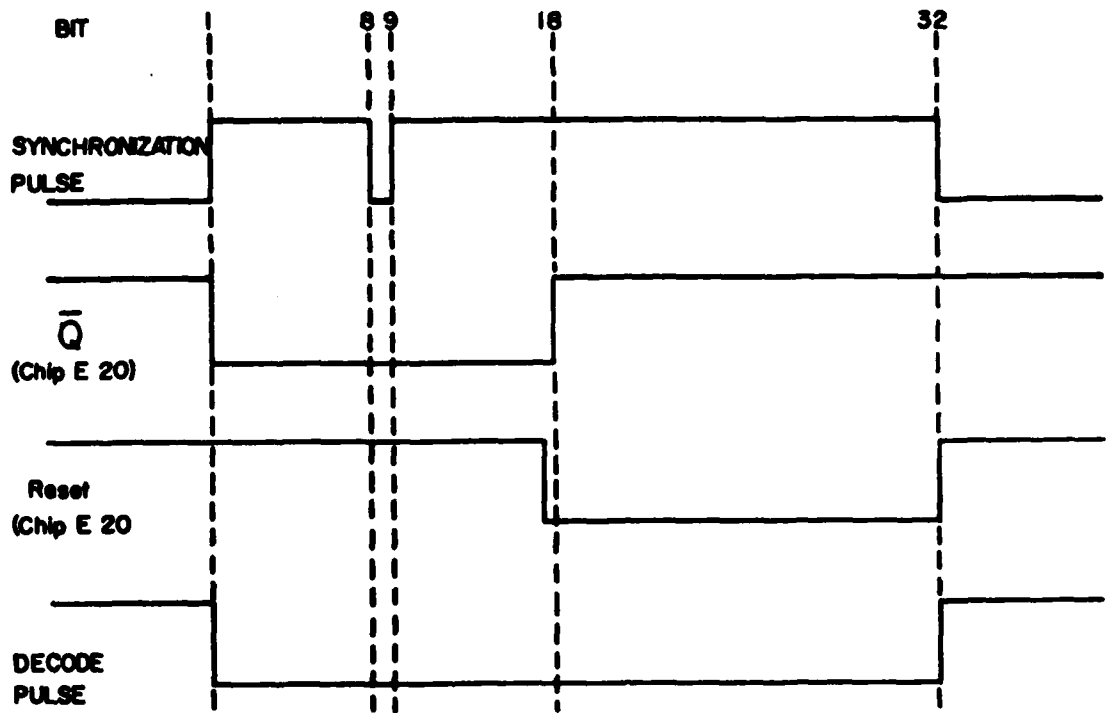


Figure 3. Use of LTN-51 Synchronisation Pulse to Provide a 32-Bit Decode Pulse

an interrupt is generated to the DRV11-C REQUEST A line. Since the DRV11-C can only accept 16 bits of parallel data, each data word must be transferred in two parts through a series of SN74LS157 2:1 multiplexers.

It was decided to transfer each 24-bit data word as an 8-bit word (8 MSB's) followed by a 16-bit word (16 LSB's).

As described earlier a 'DATA TRANSMITTED' pulse is provided from the DRV11-C while data is being read. The lagging edge of this pulse signifies that the data has been received by the LSI-11. Using this information, a timing circuit was designed to control the multiplexers and shift registers to read the six data words in the desired sequences. This circuit is shown on the circuit diagram (Appendix A) and consists of an SN74112 flip-flop (lagging edge triggered) and an SN74221 monostable multivibrator. A timing diagram for the data transfer sequence is shown in Figure 4.

The lagging edge of the 'DATA TRANSMITTED' pulse clocks the SN74112 flip-flop controlling the selection of the desired multiplexer channel and this select line in turn triggers the monostable multivibrator to clock the next 24-bit data word into the multiplexers. It should be noted that in order to read the six 24-bit data words, a total of twelve 'DATA TRANSMITTED' pulses (computer reads a data word) are required.

4.3 SOFTWARE CONTROL

The software controlling the interface can best be described by a 'walk-through' of the sequence of events in one cycle of the interface.

The interface is initialized by a RESET pulse from the DRV11-C. This pulse clears the shift registers and cancels all interrupt requests. The first desired address is then loaded into the SN7474 flip-flops on the interface. A list of the relevant addresses is given in Figure 5. Note that although the addresses are 8 bits long, only 6 bits are loaded from the computer. The two Most Significant Bits are always zeroes.

When the synchronization pulse from the LTN-51 begins signifying the start of a data word, the interface accepts all 32 bits of the word, storing them in the SN74164 shift registers. Upon receiving the 32nd bit, the Decode pulse enables a NAND gate resulting in an address comparison in the SN74LS85 digital comparators. If the data address matches the computer-loaded address, the comparators output a pulse which causes the 24 bits of data to be clocked into SN7495 shift registers for storage (a desired word) and this also results in an interrupt to the DRV11-C on the REQUEST B line. Upon receiving this interrupt, the computer loads the next desired address into the comparator circuit flip-flops.

If the desired address and the data address do not match, nothing occurs until the next data word appears and shifts out the undesired word.

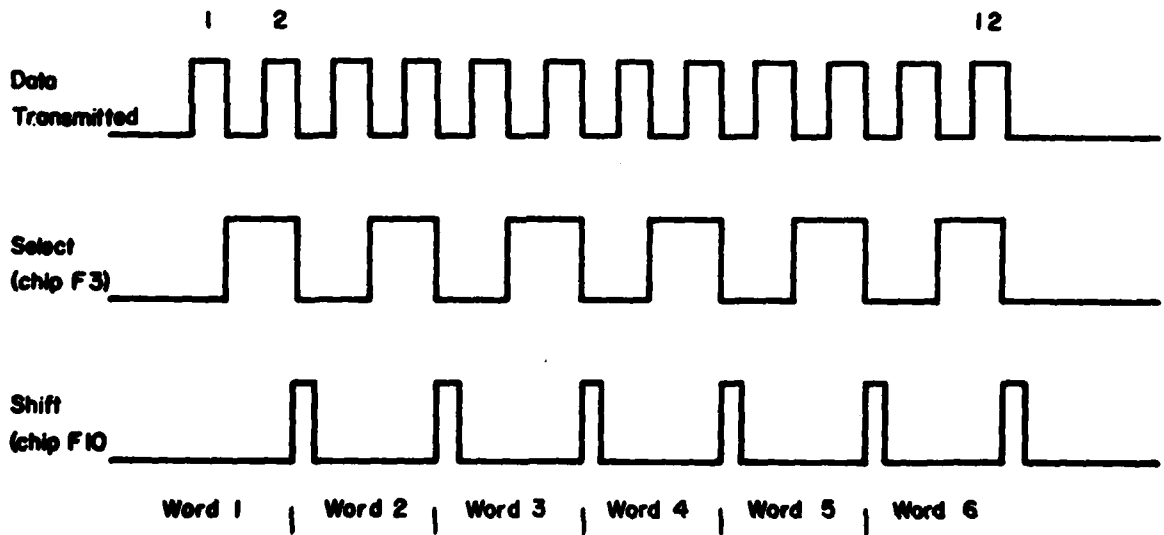


Figure 4. Timing Sequence For Data Transfer to LSI-11

Data Word	Address	
	MSB	LSB
Present Position Latitude	0 0 0 0 1 0 0 0	0 0 0 0
Present Position Longitude	0 0 0 0 1 0 0 1	0 0 0 1
Ground Speed	0 0 0 0 1 0 1 0	0 1 0 0
Track Angle	0 0 0 0 1 0 1 1	0 1 0 1
N-S Velocity	0 0 1 1 0 1 1 0	0 1 1 0
E-W Velocity	0 0 1 1 0 1 1 1	0 1 1 1

pre-wired
loaded from DRVII-C

Figure 5. Binary Data Word Addresses

This sequence carries on until all six data words have been received and stored. As the six words are stored, an SN74197 counter is incremented. Once a count of six is accumulated, the counter generates an interrupt to the DRV11-C REQUEST A line.

At this point, the computer reads the multiplexer output lines twelve times while the interface clocks the appropriate data onto them. When all six data words have been read, the computer reinitializes the interface and the sequence begins again.

A complete listing of the controlling LSI-11 software is given in Appendix B.

5.0 SUMMARY

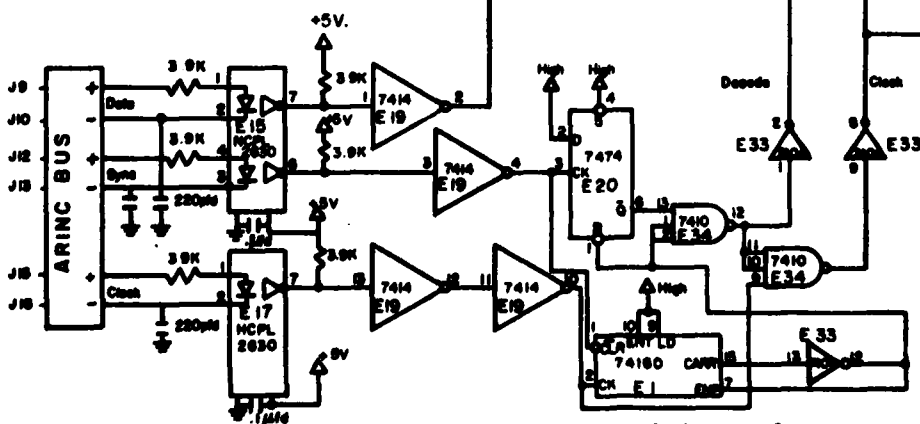
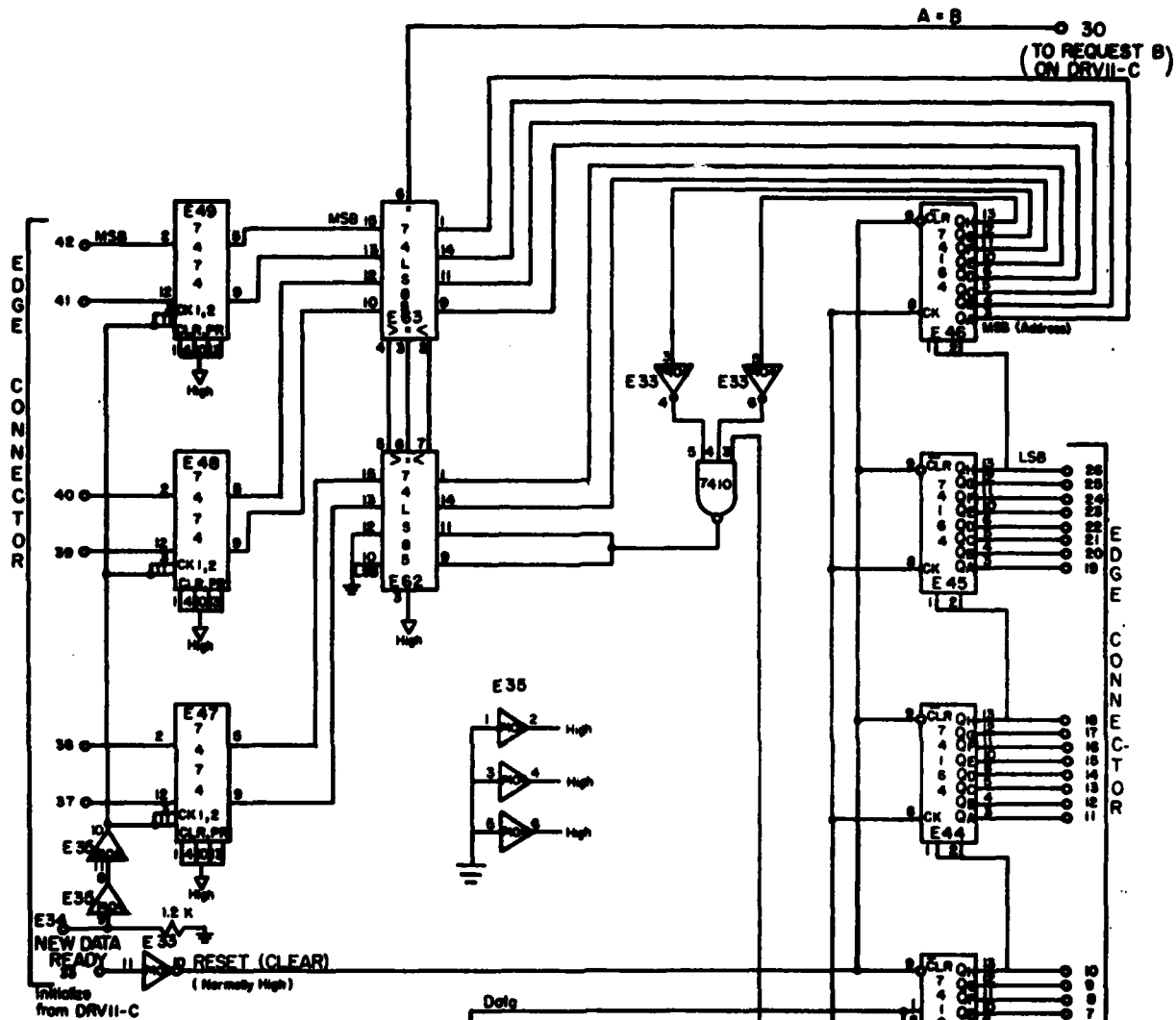
This interface was designed and built at DREO between February and April of 1980. It was installed on board a Convair 580 'flying laboratory' test aircraft in May of 1980 in preparation for summer flight trials and was found to operate as designed.

UNCLASSIFIED

APPENDIX A

INTERFACE SCHEMATIC DIAGRAM

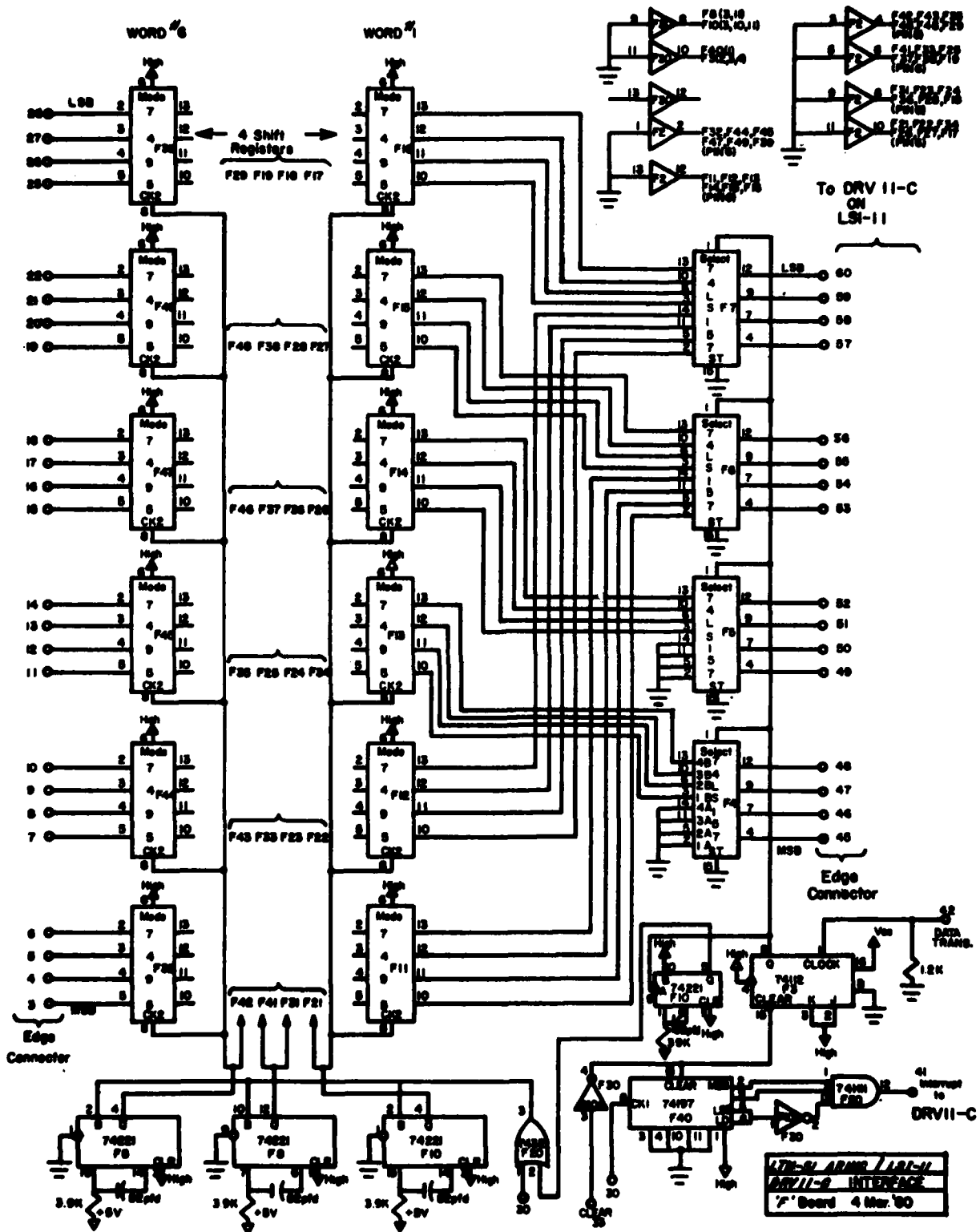
UNCLASSIFIED



'E' BOARD
25 Feb. 1980

LYN-01 ARINC /
LSI-11 DRVII-B
INTERFACE

Interface 'E' Board



Interface 'F' Board

APPENDIX B

INTERFACE SOFTWARE

UNCLASSIFIED

```

        .TITLE LTNS,INTERFACE
LTNS100
R0=X0
R1=X1
R2=X2
R3=X3
R4=X4
R5=X5
SP=X6
PC=X7
MOV #RFOA,#310          ;LOAD ADDRESS OF OUTPUT SERVICE
                        ;INTO INTERRUPT VECTOR
MOV #340,#312           ;SET PRIORITY OF OUTPUT SERVICE
MOV #KFOR,#314          ;LOAD ADDRESS OF INPUT SERVICE INTO
                        ;INTERRUPT VECTOR
                        ;SET PRIORITY OF INPUT SERVICE
MOV #340,#316
MOV #4,LATAD
MOV LATAD,#167762      ;LOAD FIRST ADDRESS (LATITUDE) INTO
                        ;INTERFACE COMPARITOR
MOV #ADDR,R2
MOV #44,(R2)+          ;LOAD ADDRESSES OF LAST 5 PIECES OF
MOV #24,(R2)+          ;DATA INTO ARRAY ADDR, 44=LONGITUDE
MOV #64,(R2)+          ;24=GROUND SPEED,64=TRACK ANGLE,
MOV #33,(R2)+          ;33=N-S VELOCITY
MOV #73,(R2)+          ;73=E-W VELOCITY
                        ;
RIC #1,167760          ;START INTERFACE BY TOGGING BIT 0
BIS #1,167760          ;OF THE DSCR
RIC #1,167760
MOV #6,KNT              ;SET ADDRESS COUNT
MOV #ADDR,MNT
ENAB: BIS #100,#167760 ;ENABLE INTERRUPTS
LOP:  RIT #2,#167760
      REG LOP
      RIC #2
      BR ENAB
REGB: RIC #100,#167760 ;DISABLE INTERRUPT B
      DEC KNT          ;DECREMENT ADDRESS COUNT
      BNE R1          ;IF COUNT=0 RELOAD FIRST ADDRESS
      MOV LATAD,#167762
      MOV #6,KNT
      MOV #ADDR,MNT
      BIS #100,#167760
      RTI
B1:   MOV MNT,R2
      MOV (R2)+,#167762 ;IF COUNT=0 LOAD NEXT ADDRESS INTO
                        ;INTERFACE COMPARITOR
      INC MNT
      INC MNT
      BIS #100,#167760 ;ENABLE INTERRUPT A
      RTI
REGA: RIC #40,#167760 ;DISABLE INTERRUPT A
      MOV #DATA,R1
      MOV #14,R3
B2:   MOV 167764,(R1)+ ;READ IN 12 WORDS OF DATA
      DEC R3
      BNE R2
      BIS #42,167760 ;ENABLE INTERRUPT A AND SET FLAG
      MOV #ADDR,MNT
      RIC #1,167760
      BIS #1,167760
      RIC #1,167760
      RTI
MNT:  .WORD 1
KNT:  .WORD 4
      .PSECT LTNDAT,0,RBL,0VR
DATA: .BLKW 14
LATAD: .WORD 4
ADDR:  .BLKW 5
      .END

```

UNCLASSIFIED

UNCLASSIFIED

Security Classification

DOCUMENT CONTROL DATA - R & D		
(Security classification of title, body of abstract and indexing annotation must be entered when the overall document is classified)		
1. ORIGINATING ACTIVITY Defence Research Establishment Ottawa	2a. DOCUMENT SECURITY CLASSIFICATION UNCLASSIFIED	
	2b. GROUP IV	
3. DOCUMENT TITLE Functional Description of the DREO LTN-51 ARINC Bus/LSI-11 DRV11-C Interface		
4. DESCRIPTIVE NOTES (Type of report and inclusive dates) Technical Note		
5. AUTHOR(S) (Last name, first name, middle initial) Capt Vinnins, Michael		
6. DOCUMENT DATE May 1980	7a. TOTAL NO. OF PAGES 16	7b. NO. OF REFS Nil.
8a. PROJECT OR GRANT NO. 32G01	9a. ORIGINATOR'S DOCUMENT NUMBER(S) Technical Note 80-10	
8b. CONTRACT NO.	9b. OTHER DOCUMENT NO.(S) (Any other numbers that may be assigned this document)	
10. DISTRIBUTION STATEMENT "Qualified requesters may obtain copies of this document from their defence documentation center".		
11. SUPPLEMENTARY NOTES	12. SPONSORING ACTIVITY DREO Defence Electronics Division	
13. ABSTRACT An interface between the ARINC Bus of a Litton LTN-51 navigation system and an LSI-11 minicomputer was designed and built for use in recording flight data on board a Convair 580 flight research aircraft.		

UNCLASSIFIED

Security Classification

KEY WORDS

LTN-51
ARINC BUS
LSI-11 MINICOMPUTER
DIGITAL INTERFACE

INSTRUCTIONS

1. **ORIGINATING ACTIVITY:** Enter the name and address of the organization issuing the document.
- 2a. **DOCUMENT SECURITY CLASSIFICATION:** Enter the overall security classification of the document including special warning terms whenever applicable.
- 2b. **GROUP:** Enter security reclassification group number. The three groups are defined in Appendix "M" of the DRB Security Regulations.
3. **DOCUMENT TITLE:** Enter the complete document title in all capital letters. Titles in all cases should be unclassified. If a sufficiently descriptive title cannot be selected without classification, show title classification with the usual one-capital-letter abbreviation in parentheses immediately following the title.
4. **DESCRIPTIVE NOTES:** Enter the category of document, e.g. technical report, technical note or technical letter. If appropriate, enter the type of document, e.g. interim, progress, summary, annual or final. Give the inclusive dates when a specific reporting period is covered.
5. **AUTHOR(S):** Enter the name(s) of author(s) as shown on or in the document. Enter last name, first name, middle initial. If military, show rank. The name of the principal author is an absolute minimum requirement.
6. **DOCUMENT DATE:** Enter the date (month, year) of Establishment approval for publication of the document.
- 7a. **TOTAL NUMBER OF PAGES:** The total page count should follow normal pagination procedures, i.e., enter the number of pages containing information.
- 7b. **NUMBER OF REFERENCES:** Enter the total number of references cited in the document.
- 8a. **PROJECT OR GRANT NUMBER:** If appropriate, enter the applicable research and development project or grant number under which the document was written.
- 8b. **CONTRACT NUMBER:** If appropriate, enter the applicable number under which the document was written.
- 9a. **ORIGINATOR'S DOCUMENT NUMBER(S):** Enter the official document number by which the document will be identified and controlled by the originating activity. This number must be unique to this document.
- 9b. **OTHER DOCUMENT NUMBER(S):** If the document has been assigned any other document numbers (either by the originator or by the sponsor), also enter this number(s).
10. **DISTRIBUTION STATEMENT:** Enter any limitations on further dissemination of the document, other than those imposed by security classification, using standard statements such as:
 - (1) "Qualified requesters may obtain copies of this document from their defence documentation center."
 - (2) "Announcement and dissemination of this document is not authorized without prior approval from originating activity."
11. **SUPPLEMENTARY NOTES:** Use for additional explanatory notes.
12. **SPONSORING ACTIVITY:** Enter the name of the departmental project office or laboratory sponsoring the research and development. Include address.
13. **ABSTRACT:** Enter an abstract giving a brief and factual summary of the document, even though it may also appear elsewhere in the body of the document itself. It is highly desirable that the abstract of classified documents be unclassified. Each paragraph of the abstract shall end with an indication of the security classification of the information in the paragraph (unless the document itself is unclassified) represented as (TS), (S), (C), (R), or (U).

The length of the abstract should be limited to 20 single-spaced standard typewritten lines; 7 1/2 inches long.
14. **KEY WORDS:** Key words are technically meaningful terms or short phrases that characterize a document and could be helpful in cataloging the document. Key words should be selected so that no security classification is required. Identifiers, such as equipment model designation, trade name, military project code name, geographic location, may be used as key words but will be followed by an indication of technical context.