

AD-A093 536

NAVAL OCEANOGRAPHY COMMAND DETACHMENT ASHEVILLE NC
INVENTORY OF MARINE UPPER AIR OBSERVATIONS FOR MOVING SHIPS AND--ETC(U)
NOV 80

F/6 4/2

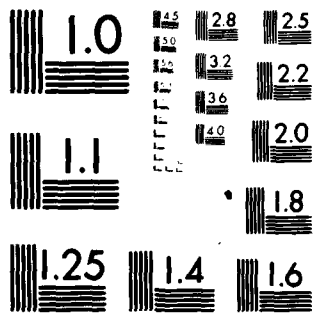
UNCLASSIFIED

NL

For I
40



END
DATE
FILMED
2-81
DTIC



MICROCOPY RESOLUTION TEST CHART

NATIONAL BUREAU OF STANDARDS-1963-A

AD A093536

DISTRIBUTION STATEMENT A
Approved for Public Release
Distribution Unlimited

INTRODUCTION

INVENTORY OF MARINE UPPER AIR OBSERVATIONS

The inventory of marine upper air observations was compiled from the various upper air magnetic tape data families archived at the National Climatic Center, Asheville, N.C.

The inventory contains observation counts for radiosonde and rawinsonde observations taken over the marine areas excluding land and island stations. The marine inventory is tabulated into ^{6 deg} 5° Lat/Long squares with the number of observations given for the period of record 1946-1979.

Caution: For area 5N to 5S between 5W and 5E are not computed for each quadrant but are a summation of the 5 degree areas representing the four quadrants.

Past archival policy has allowed only mandatory levels to be archived from moving ships with the exception of Ocean Station Vessels, for the period 1946-1970. For the period 1970 to the present, both mandatory and significant levels have been archived from all marine upper air observations. Information pertaining to the locations of upper air reporting stations for land and island stations throughout the world can be obtained from the Air Weather Service publication, AWSP 105-52, Vol 1, 2 and 3.

on For	MA&I	<input checked="" type="checkbox"/>
	B	<input type="checkbox"/>
	needed	<input type="checkbox"/>
	categories	<i>MA.</i>
		<i>12/31/50.</i>
By		
Distribution/		
Availability Codes		
Dist	Avail and/or	Special
<i>A</i>		

SHIP UPPER AIR INVENTORY--OCTANT 0

	90W	85W	80W	75W	70W	65W	60W	55W	50W	45W	40W	35W	30W	25W	20W	15W	10W	5W
90W	1	0	0	0	1	1	0	0	2	1	1	0	0	1	0	0	0	0
85W	0	0	2	3	3	0	0	0	0	1	0	0	1	0	0	0	0	0
80W	0	5	0	0	3	0	0	0	0	0	0	0	0	0	2	2	2	14
75W	3	3	4	1	11	45	15	1	0	0	2	2	1	3	2	10	17	31
70W	1	16	2	0	1	6	22	21	0	1	16	11	21	17	9	19	6	66
65W	0	1	3	0	0	11	9	11	6	2	16	979	72	25	9	268	96	130
60W	0	1	0	0	0	7	14	15570	1357	118	259	31	23	105	4427	132	63	24
55W	0	0	0	1	1	0	37	432	452	310	13411	6489	59	219	2380	102	12	17
50W	1	0	0	2	9	12	88	330	1632	432	208	148	373	197	2158	418	175	25
45W	0	0	173	108	246	2154	462	430	1030	16736	1740	775	103	67	6484	90	45	6
40W	0	1	53	5690	3082	1687	461	285	390	172	156	256	254	262	178	263	222	246
35W	0	98	543	2242	557	145	210	205	15857	82	70	59	52	41	58	82	66	10
30W	346	151	619	522	470	122	83	66	39	51	33	28	70	60	56	19	0	1
25W	586	164	1402	312	628	66	33	13	60	30	20	42	44	49	90	2	1	2
20W	51	50	262	738	596	634	28	75	63	13	6	35	35	46	43	0	3	13
15W	11	22	364	143	99	140	36	31	35	17	13	26	101	139	133	3	3	8
10W	51	59	68	1	0	0	11	34	43	10	54	49	124	348	137	45	5	7
5W	33	64	85	3	1	3	7	8	20	37	36	46	122	709	14	42	75	1028

SHIP UPPER AIR INVENTORY--OCTANT 1

	180W	170W	165W	160W	155W	150W	145W	140W	135W	130W	125W	120W	115W	110W	105W	100W	95W
90W	0	1	1	0	0	0	0	0	5	1	8	4	3	3	0	0	2
85W	3	25	24	13	16	7	37	22	26	274	24	0	0	47	44	96	43
80W	2	0	2	0	0	2	1	1	93	178	0	0	0	1	0	1	0
75W	0	0	0	0	3	2	0	0	0	2	0	0	0	16	6	0	0
70W	22	35	107	9	0	0	9	0	1	3	1	3	2	1	5	1	1
65W	29	65	162	46	0	0	6	0	0	0	1	0	0	0	0	0	0
60W	29	54	118	20	8	43	180	99	33	14	1	0	1	4	2	0	1
55W	60	94	290	200	283	138	134	220	683	295	3	0	0	2	0	1	0
50W	92	1278	352	226	163	146	255	21408	1087	1558	745	51	0	5	5	2	0
45W	172	1427	315	295	483	285	286	288	407	1442	2865	66	0	2	5	0	1
40W	328	1283	588	525	510	437	445	495	632	1963	2827	819	6	3	0	1	0
35W	550	433	437	568	493	433	395	411	1087	4011	1938	1981	4287	4	1	0	1
30W	319	613	509	578	363	233	841	1128	15725	461	294	176	251	124	4	0	143
25W	438	819	436	1030	950	1274	742	138	49	62	44	87	43	91	30	0	227
20W	164	157	208	321	561	56	47	53	102	32	51	26	36	23	67	39	33
15W	105	88	71	97	126	67	116	12	22	35	15	10	61	21	28	35	62
10W	11	7	67	138	46	73	73	8	24	10	9	9	24	10	15	22	19
5W	30	17	20	28	80	23	50	30	18	6	8	5	36	24	16	28	38
																	42

SHIP UPPER AIR INVENTORY--OCTANT 2

	15E	10E	5E	11E	12E	13E	14E	15E	16E	17E	18E
9EN	0	0	1	0	0	0	2	0	0	0	0
8EN	2	1	0	0	2	6	8	7	35	7	1
7EN	1	3	1	2	0	1	0	2	0	0	0
6EN	0	0	1	4	4	1	7	0	0	3	6
5EN	0	0	0	0	0	1	0	0	0	0	0
4EN	0	0	0	0	0	0	0	0	0	1	0
3EN	0	0	0	1	0	0	0	0	0	0	0
2EN	0	0	0	1	0	0	0	0	1	4	8
1EN	0	0	1	0	0	1	22	22	19	48	44
9EW	0	0	1	0	0	0	1	10	24	41	56
8EW	0	0	2	1	0	3	43	86	48	153	238
7EW	0	0	0	0	1	0	0	1	22	22	19
6EW	0	0	0	0	0	0	0	0	0	0	1
5EW	0	0	0	0	0	0	0	0	0	0	0
4EW	0	0	0	0	0	0	0	0	0	0	0
3EW	0	0	0	0	2	0	83	50	222	358	280
2EW	0	0	0	0	10	2	230	121	822	952	846
1EW	0	0	0	0	1	19	177	4339	145	87	160
9E	0	0	1	4	20	150	164	122	46	56	37
8E	16	1	2	781	109	247	94	57	76	50	34
7E	8	2	0	126	237	585	32	65	105	51	28
6E	20	9	32	132	37	16	8	3	4	6	4
5E	32	16	50	29	11	6	3	3	5	9	8
4E											
3E											
2E											
1E											
9S											
8S											
7S											
6S											
5S											
4S											
3S											
2S											
1S											
9W											
8W											
7W											
6W											
5W											
4W											
3W											
2W											
1W											
TOTAL	104	146	169	146	350	350	350	350	350	350	350

SHIP UPPER AIR INVENTORY--OCTANT 3

	1E	10E	19E	20E	29E	30E	39E	40E	49E	50E	59E	60E	65E	70E	75E	80E	85E	90E
90W	0	0	1	0	0	0	0	0	0	0	0	1	0	0	0	0	0	0
89W	1	1	1	0	0	0	0	0	0	0	0	0	0	1	2	3	0	1
88W	13	8	6	2	1	3	4	2	3	2	2	4	11	8	12	8	7	10
78W	32	16	17	23	19	14	8	6	6	7	8	7	10	8	6	3	0	0
70W	2944	84	39	14	0	0	1	1	2	0	2	0	2	0	0	0	0	1
69W	441	49	0	0	0	0	0	0	0	0	0	0	0	0	1	0	0	0
60W	62	5	2	2	0	0	0	0	0	0	0	0	0	0	2	0	0	0
59W	8	6	0	0	2	0	0	2	0	0	0	0	0	1	0	0	0	0
50W	2	1	2	0	0	0	0	0	0	0	0	0	0	0	0	0	0	0
49W	206	923	754	12	7	33	0	0	0	0	0	0	0	1	1	0	1	0
40W	391	682	449	752	464	148	11	3	7	3	2	3	3	3	9	3	1	0
39W	30	4	64	182	337	208	251	7	13	9	7	3	32	3	2	2	0	0
30W	8	3	1	0	0	3	14	4	3	27	13	14	7	4	7	4	1	0
29W	0	2	0	3	5	2	2	10	1	2	1	18	24	14	4	5	0	3
20W	1	60	7	7	3	1	0	5	7	0	3	12	5	15	1	0	0	37
19W	1	6	11	13	1	2	1	0	10	14	25	36	46	138	5	4	0	12
10W	3	8	4	2	0	0	0	0	1	13	3	17	31	25	18	9	23	
9W	10	12	4	4	3	2	4	2	4	10	11	7	13	20	23	79	64	60

SHIP UPPER AIR INVENTORY--OCTANT 5

	700	850	800	750	700	650	600	550	500	450	400	350	300	250	200	150	100	50
55	19	51	0	0	1	0	0	0	0	0	28	22	38	32	4	4	4	6
105	13	51	29	0	6	0	0	0	0	0	1	36	30	53	7	9	5	5
155	10	25	34	0	5	1	0	0	0	10	17	15	12	9	4	2	2	2
205	0	7	20	15	0	0	0	0	0	0	19	7	0	2	1	7	4	3
255	0	0	13	28	0	0	0	0	0	24	15	2	1	1	0	0	3	6
305	3	1	4	32	0	0	0	0	15	7	1	1	5	1	1	1	1	2
355	3	5	6	15	0	0	4	17	21	1	1	2	2	6	2	1	4	3
405	5	11	8	16	0	1	19	10	2	0	0	1	0	0	0	0	0	0
455	9	12	23	9	0	18	15	3	5	2	1	0	0	0	0	0	0	0
505	9	9	17	2	1	10	7	1	1	5	6	6	2	0	0	0	0	0
555	5	7	18	14	23	37	19	12	24	10	11	7	8	5	4	3	1	0
605	10	9	11	20	57	82	39	14	12	19	16	16	23	15	1	7	1	4
655	11	9	16	14	22	191	50	14	22	31	8	6	13	6	8	9	3	1
705	8	12	3	16	33	1	1	3	21	4	11	7	5	5	6	10	2	5
755	0	0	0	0	0	0	7	5	4	5	8	17	15	11	15	19	4	0
805	0	0	0	0	0	0	5	3	4	55	8	7	5	0	0	0	0	0
855	0	0	0	0	0	0	0	0	0	0	0	0	0	0	0	0	0	0
905	0	0	0	0	0	0	0	0	0	0	0	2	0	0	0	0	0	0

SHIP UPPER AIR INVENTORY--OCTANT 6

	180W	175W	170W	165W	160W	155W	150W	145W	140W	135W	130W	125W	120W	115W	110W	105W	100W	95W
5S	6	2	16	12	4	13	34	14	1	4	0	3	17	14	5	7	19	21
10S	3	3	31	2	4	24	12	6	7	2	4	3	4	3	2	4	11	27
15S	12	14	40	13	16	13	14	1	11	2	2	0	0	4	3	12	8	13
20S	10	26	23	24	10	9	5	6	12	3	4	3	7	6	13	6	7	6
25S	4	8	6	20	4	8	3	18	26	8	4	4	2	9	4	3	0	1
30S	27	21	16	13	4	2	26	6	49	3	5	11	2	2	1	3	1	3
35S	24	19	11	4	5	4	2	2	3	8	6	3	2	3	2	3	3	5
40S	22	12	2	4	4	4	6	9	7	8	5	3	1	1	2	2	2	6
45S	8	8	12	10	10	6	8	6	5	7	2	5	5	2	3	1	5	5
50S	1	7	10	4	5	2	4	3	5	2	2	2	4	3	4	3	4	2
55S	0	2	1	4	4	3	5	8	5	8	9	12	6	5	4	5	9	10
60S	2	3	2	1	7	6	7	9	11	9	13	12	13	8	14	15	11	11
65S	3	3	4	3	8	1	5	3	4	12	11	1	12	14	10	9	2	15
70S	4	3	2	4	4	4	2	0	2	9	5	10	9	11	9	7	8	18
75S	20	12	5	1	2	4	4	14	9	5	2	0	0	1	0	4	14	2
80S	12	7	18	82	6	6	0	0	0	0	0	0	0	0	0	0	0	0
85S	0	0	0	0	0	0	0	0	0	0	0	0	0	1	0	0	0	0
90S	0	0	0	0	0	0	0	0	0	0	1	0	0	0	0	1	0	0

SMIP UPPEF AIP INVENTORY--OCTANT 7

	95E	100E	105E	110E	115E	120E	125E	130E	135E	140E	145E	150E	155E	160E	165E	170E	175E	180E
55	2	5	2	14	3	4	0	1	1	7	2	8	9	4	18	7	4	7
105	3	7	5	15	11	4	0	0	0	0	1	5	11	5	13	3	6	0
155	17	6	0	9	4	5	1	0	1	1	0	4	5	7	7	4	3	3
205	2	2	1	0	3	0	0	1	0	0	0	2	9	8	7	0	5	5
255	1	2	0	3	4	0	1	0	0	0	0	11	15	7	6	7	4	6
305	14	14	7	13	4	0	0	0	1	0	0	0	15	13	15	4	4	7
355	4	4	6	4	8	4	1	2	2	0	0	0	23	15	13	6	6	3
405	4	1	0	4	2	3	5	6	8	5	2	7	12	16	18	9	6	11
455	1	4	3	5	1	1	1	1	7	5	6	4	8	7	11	4	13	19
505	0	2	1	4	1	0	0	0	11	3	2	4	3	4	8	40	78	9
555	0	1	0	0	4	0	0	0	24	1	4	0	5	8	18	63	72	17
605	1	0	2	0	0	3	2	11	2	4	4	3	9	769	112	707	83	27
655	9	1	2	8	5	4	1	5	7	2	4	8	6	34	23	27	54	49
705	11	0	0	25	1	1	0	1	0	0	7	1	2	4	56	24	70	75
755	0	0	0	0	0	0	0	0	0	0	0	0	0	0	2	85	118	41
805	0	0	0	0	0	0	0	0	0	0	0	0	0	0	16	304	18	8
855	0	0	0	1	0	0	0	0	0	0	0	0	0	0	0	0	0	0
905	0	0	0	0	0	0	0	0	0	0	0	0	0	0	0	0	0	0

SHIP UPPER AIR INVENTORY--OCTANT 8

	5E	10E	15E	20E	25E	30E	35E	40E	45E	50E	55E	60E	65E	70E	75E	80E	85E	90E
5S	5	35	3	0	0	0	1	2	9	6	3	4	13	17	7	16	7	13
10S	0	11	0	0	0	0	1	0	2	6	2	5	10	6	6	2	1	5
15S	2	4	20	0	0	0	0	0	0	1	3	2	9	7	3	1	2	7
20S	4	5	1	0	0	0	0	0	0	0	3	2	15	5	5	4	7	6
25S	5	3	2	0	0	0	0	0	0	0	3	4	22	3	4	5	0	7
30S	4	8	3	0	0	0	3	3	3	1	4	3	17	10	1	2	2	6
35S	4	7	11	11	7	3	9	8	7	6	10	8	12	5	3	2	2	2
40S	1	19	2	8	3	0	0	0	0	1	1	4	13	4	3	1	1	1
45S	0	1	1	3	1	0	0	0	0	0	1	2	5	3	2	1	0	1
50S	0	0	1	1	4	1	0	0	1	0	0	0	2	1	2	0	1	1
55S	0	0	0	1	3	0	2	1	0	0	1	0	0	0	4	0	0	0
60S	3	0	0	3	1	1	1	0	1	0	0	0	0	0	1	0	1	0
65S	0	0	5	1	1	3	3	2	1	1	0	0	2	7	2	0	3	3
70S	1	0	6	14	8	1	1	10	3	7	1	0	3	0	0	0	0	0
75S	0	0	1	0	0	0	0	0	0	0	0	0	0	0	0	0	0	0
80S	0	0	0	0	0	0	0	0	0	0	0	0	0	0	0	0	0	0
85S	0	0	0	0	0	0	0	0	0	0	0	0	0	0	0	0	0	0
90S	0	0	0	0	0	0	0	0	0	0	0	0	0	0	0	0	0	0

JBRKPT PRINTS

