

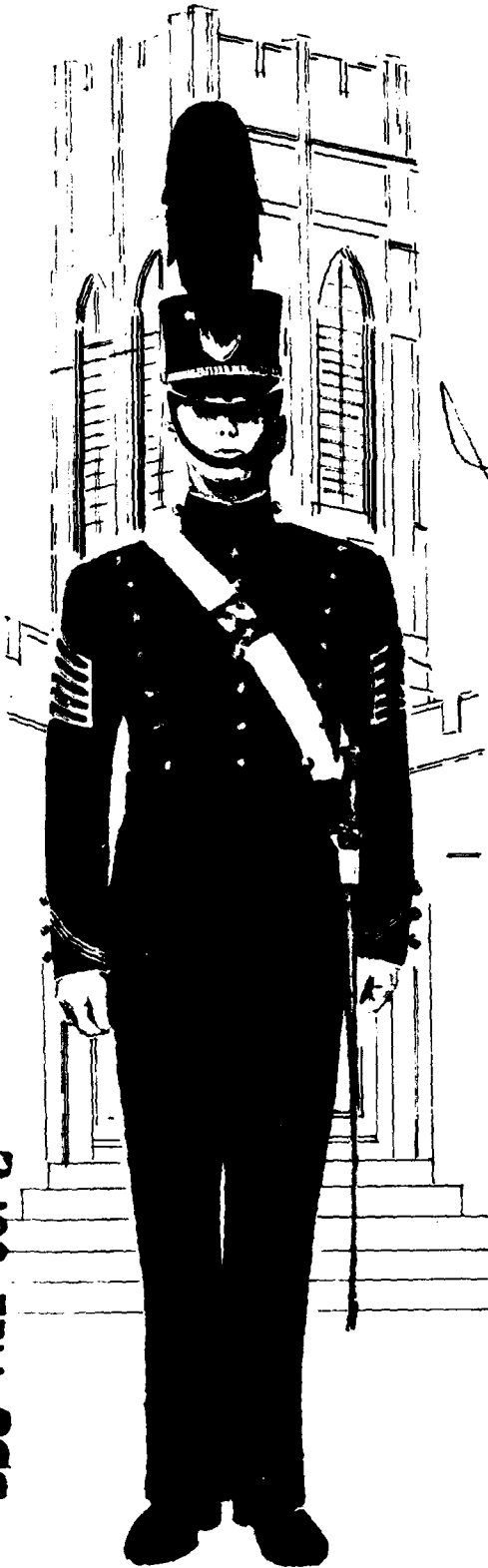
MICROCOPY RESOLUTION TEST CHART
NATIONAL BUREAU OF STANDARDS-1963-A

LEVEL II

81-006

12

AD A 096252



See 14715

UNITED STATES MILITARY ACADEMY

WEST POINT, NEW YORK

TRENDS IN ADMISSION VARIABLES THROUGH THE CLASS OF 1984

SECRET
MAR 12 1981
E

DBG FILE COPY

OFFICE OF THE DIRECTOR OF INSTITUTIONAL RESEARCH

JANUARY 1981

DISSEMINATION STATEMENT A
Approved for public release;
Distribution Unlimited

DUTY-HONOR-COUNTRY

81 3 10 007

TRENDS IN ADMISSION VARIABLES THROUGH THE CLASS OF 1984

Report No.: 81-006
Project No.: 373
Prepared by: Mr John H. Houston
Programmer: Mrs. Jackie Pittard
Typist: Miss Shirley Sabel
January 1981

ABSTRACT

The United States Military Academy uses the Whole Candidate concept in the selection of candidates for admission. This concept encompasses three broad areas: academic, leadership potential, and physical condition and aptitude. This report compares the pre-college performance of members of the Class of 1984 with previous classes in these three areas.

Accession For	
NTIS GRA&I	<input checked="" type="checkbox"/>
DTIC TAB	<input type="checkbox"/>
Unannounced	<input type="checkbox"/>
Justification	
By _____	
Distribution/	
Availability Codes	
Dist	Special
A	

NOTE: Any conclusions in this report are not to be construed as official U.S. Military Academy or Department of the Army positions unless so designated by other authorized documents.

OFFICE OF
THE DIRECTOR OF INSTITUTIONAL RESEARCH
UNITED STATES MILITARY ACADEMY
WEST POINT, NEW YORK 10996

Index to Tables and Figures

	<u>Page Number</u>	<u>Title</u>
Figure 1	5	Comparison of number of Cadets and Candidates at each CEER score level--Class of 1984.
Figure 2	6	Comparison of number of Cadets and Candidates at each ACEER score level--Class of 1984.
Table 1	7	Distribution of scores on Whole Candidates score components--Class of 1984.
Table 2	8	Mean and standard deviations for all admission variables for Candidates and Cadets--Class of 1984.
Figure 3	9	Comparison of number of Cadets and Candidates at each LPS level--Class of 1984.
Figure 4	10	Comparison of number of Cadets and Candidates at each Whole Candidate Score level--Class of 1984.
Figure 5	11	Trends of CEER Scores for Candidates and Cadets--Classes of 1975-1984.
Figure 6	12	Trends of SAT-Verbal Scores for Candidates and Cadets--Classes of 1975-1984.
Figure 7	13	Trends of SAT-Math Scores for Candidates and Cadets--Classes of 1975-1984.
Figure 8	14	Trends of Leadership Potential Scores for Candidates and Cadets--Classes of 1975-1984.
Figure 9	15	Trends of Physical Aptitude Exam Scores for Candidates and Cadets--Classes of 1975-1984.
Figure 10	16	Trends of High School Rank Scores of Candidates and Cadets--Classes of 1975-1984.
Figure 11	17	Trends of Whole Candidate Scores for Candidates and Cadets--Classes of 1975-1984.
Table 3	18	Selected High School Activities and Awards of Cadets--Classes of 1976-1984.
Table 3a	19	Selected characteristics of Cadets--Classes of 1976-1984.

Executive Summary

I. PURPOSE. This report contains information, for rapid reference, comparing the pre-college performance of members of the Class of 1984 with previous classes in the areas of academics, leadership potential, and physical performance.

II. METHODOLOGY. Data displayed in this report were obtained from the following sources:

- A. Academic Performance: High School Transcripts, American College Tests and College Entrance Examination Board Tests.
- B. Physical Performance: Physical Aptitude Exam.
- C. Leadership Potential: An index developed from combining extra-curricular and athletic activities with high school faculty evaluation.

III. RESULTS.

A. The mean SAT-Verbal score (552) for cadets in the Class of 1984 is two points lower than the average mean score of the last nine years and the mean SAT-Math score (623) is seven points lower.

B. The Class of 1984 Physical Aptitude Exam score for men (560) is nine points higher than the average mean for the last nine years and the Leadership Potential Score mean (600) is six points lower.

C. The mean Whole Candidate Score for cadets in the Class of 1984 (5891) is four points lower than the mean score of the last nine years.

IV. CONCLUSIONS.

A. Academic Qualifications: The academic qualifications of cadets have remained approximately the same while the mean College Board scores of all college bound high school seniors throughout the United States has shown a steady decline over the past ten years.

B. Physical Qualifications: While a trend has not yet been established for women, the Physical Aptitude Exam scores of male cadets have shown a slight rise over the last ten years.

C. Leadership Qualifications: The qualities of leadership as measured by the Leadership Potential Score have remained stable over the ten year period.

D. Overall Qualifications: The Military Academy is continuing to attract outstanding candidates.

I. INTRODUCTION

A. Background.

1. This report, along with the reports, Characteristics of the Class of 1984 (December 1980) and New Cadets and Other College Freshmen, Class of 1984 (due spring, 1981), comprise the three general reports prepared by the Office of Institutional Research to describe the Class of 1984 at the time the class entered the Military Academy.

2. The same reports were prepared for the Classes of 1971 through 1983 and similar reports are planned for each future class when it enters the Military Academy.

B. Purpose.

This report compares the pre-college performance of members of the Class of 1984 with previous classes in the areas of academics, leadership, physical performance and athletic participation.

II. METHODOLOGY

A. Data Collection.

Data displayed in this report was obtained from the following sources:

1. Academic performance: High School Transcripts, American College Tests, and College Entrance Examination Board Tests.
2. Physical performance: Physical Aptitude Exam.
3. School Activities and Awards: Self-reported by cadets on questionnaires administered during Cadet Basic Training.
4. Leadership Potential: An index developed from combining extracurricular and athletic activities with high school faculty evaluations.

B. Definitions.

1. CEER College Entrance Examination Board scores and High School Rank scores combined statistically.
2. HSR High School Rank Score.
3. LPS Leadership Potential Score.
4. PAE Physical Aptitude Examination.
5. SAT-V Scholastic Aptitude Test Verbal.
6. SAT-M Scholastic Aptitude Test - Mathematics.
7. ACT-EN American College Test - English.
8. ACT-MA American College Test - Mathematics.
9. ACT-NA American College Test - Natural Science.
10. ACEER A composite score of 3 ACT tests and HSR (the ACT Social Science test is not used in calculating the ACEER).
11. WCS Whole Candidate Score. A combination of CEER (or ACEER), LPS and PAE.

III. RESULTS

A. Academic Characteristics.

1. The mean College Entrance Examination Board and American College Test scores for the Classes of 1980 through 1984 for admitted cadets are:

	<u>'84</u>	<u>'83</u>	<u>'82</u>	<u>'81</u>	<u>'80</u>
SAT-V	552	560	560	548	550
SAT-M	623	626	637	629	638
ACT-EN	23.2	23.2	23.2	22.4	22.6
ACT-MA	28.9	28.9	29.0	28.4	28.7
ACT-NS	28.7	29.1	29.0	29.0	29.2
HSR	556	565	569	563	572

2. The mean cadet score for the Class of '84 on SAT-V is higher than that of 86% of secondary school seniors who comprise the national norm for college bound youths; and the mean SAT-M of cadets is higher than 89% of the national norm. The means of cadets on the American College Test scores were well above the national sample for students at 1103 colleges. The mean cadet score for the Class of '84 on ACT-English is higher than 86% of the students in the national norm; the mean cadet ACT-Math is higher than 91% of those students; and the mean cadet ACT-Natural Science score is higher than 79%.

3. The mean scores of the Scholastic Aptitude Tests of all college-bound high school seniors, nationwide, have shown a steady decline over the past fifteen years; for USMA the decline has been much less:

	SAT-V			SAT-M		
	1965	1980	% Decline	1965	1980	% Decline
USMA	569	552	3%	637	623	2%
Nationwide	473	424	10%	496	466	6%

4. Each candidate is evaluated either on College Board scores (CEER) or American College Test Program scores (ACEER). If both are available, the higher of the two is used. Figure 1 provides a graphic comparison of the number of cadets within each CEER range with the number of completely examined candidates within the same ranges. Figure 2 shows a similar comparison of candidates and cadets evaluated using ACEER scores. Table 1 shows the distribution, at 50 point intervals, of whole candidate score components for cadets in the Class of 1984.

B. Physical Aptitude. The average Physical Aptitude Examination score of 560 for men in the USMA Class of 1984 is the same as the score for the Class of 1983. The women in the Class of 1984 had a mean PAE score of 534 compared to 506 for women in the previous class. It should be noted that the PAE tests for men and women are not identical. The mean PAE for all candidates is shown in Table 2.

C. Leadership Potential. The Leadership Potential Scores are derived from the ratings of the candidate by his secondary school teachers and evaluations by admissions officials of his quality of participation in athletic and other school and community activities. The mean LPS for this class (600) is within four points of the mean of classes for the past four years. A graphic comparison of the distribution scores in this Class with that in the candidate populations is provided in Figure 3.

D. Overall Characteristics.

1. The Whole Candidate Score is a weighted score consisting of 60 percent CEER (or ACEER), 10 percent PAE, and 30 percent LPS. The distribution of the WCS for the Class of 1984 is shown below:

<u>Score Range</u>	<u>Frequency</u>	<u>Percent</u>
7500-8000	0	0
7000-7499	2	0.1
6500-6999	72	4.9
6000-6499	461	31.4
5500-5999	710	48.5
5000-5499	208	14.2
4500-4999	<u>13</u>	<u>0.9</u>

1466

Mean = 5891 Standard deviation = 364

2. A graphic comparison of the number of cadets whose scores fall in each WCS range with the number of candidates whose scores fall within the same ranges is shown in Figure 4.

E. Trends in Admissions Variables.

Figures 5-11 show trend data for the classes of 1975 through 1984. Figure 5 shows that academic scores dropped off somewhat to the Class of 1977 and, after a sharp rise for the Class of 1978, have remained fairly constant. Other trends for admitted cadets reflect the following:

1. SAT-V and SAT-M scores show a similar pattern, with little deviation over the past five years (Figures 6&7).
2. The LPS has remained fairly constant with a deviation of no more than eight points from the mean of the ten year period (Figure 8).
3. The PAE scores for men have shown a slight rise over the last ten years (Figure 9).
4. The HSR has been fairly constant for the last ten years, with the mean for the Class of '84 being two points higher than the average for that period (Figure 10).
5. The WCS declined through the Class of 1977, increasing for the Class of 1978 through the Class of 1982 and declined slightly for the Class of 1984 (Figure 11).

F. Selected Activities and Awards.

1. Tables 3 and 3a give information on the background, activities and awards of entering cadets of the Classes of 1976 through 1984.
2. The Class of 1984 displays a diversity of involvement in extracurricular and athletic activities similar to previous classes. Over 25 percent of the Class of 1984 held an elective high school class office; over 84 percent earned varsity letters and 47 percent were team captains. Over 50 percent were scouts, 12 percent making the rank of Eagle Scout. Twenty-three percent were Boys/Girls State Representatives.

IV. CONCLUSIONS

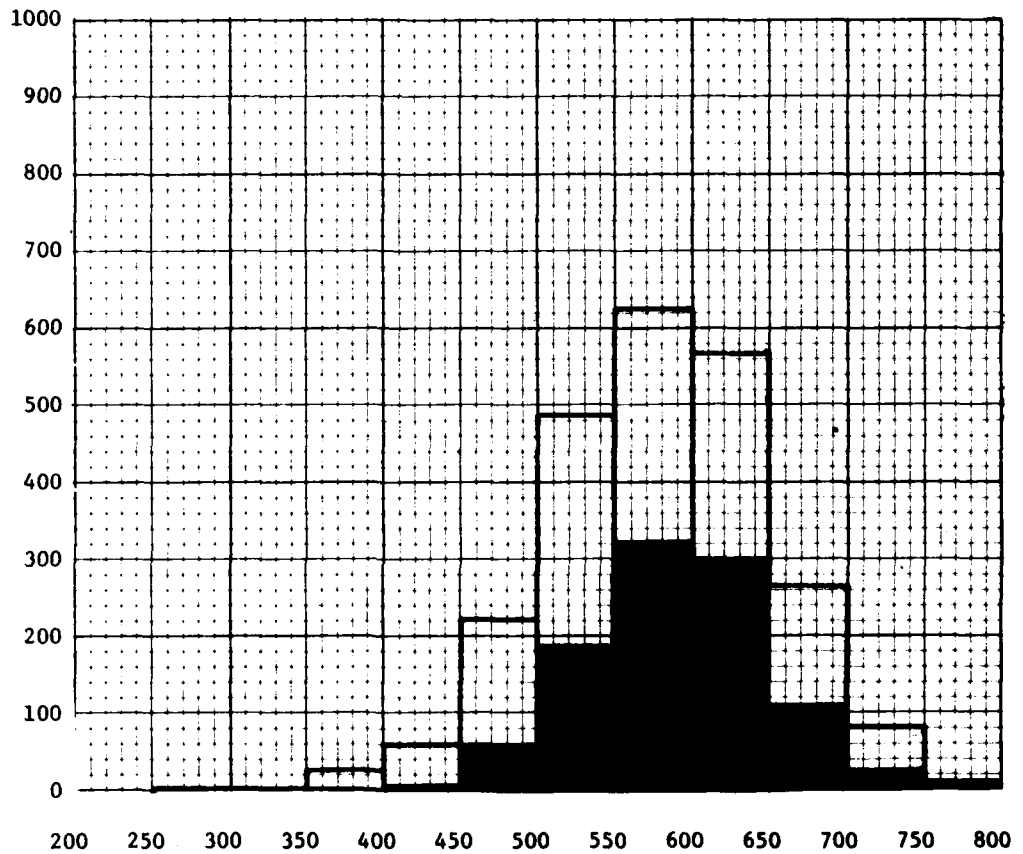
1. **Academic Qualifications:** The academic qualifications of cadets have remained approximately the same while the mean College Board scores of all college bound high school seniors have shown a steady decline over the past ten years.

2. **Physical Qualifications:** While a trend has not yet been established for women, the Physical Aptitude Exam scores of male cadets have shown a slight rise over the past ten years.

3. **Leadership Qualifications:** The qualities of leadership as measured by the Leadership Potential Score have remained stable over the ten year period.

4. **Overall Qualifications:** The Class of 1984 has a mean Whole Candidate Score within four points of the average mean score of the last ten years, indicating that the Military Academy is continuing to attract outstanding candidates.

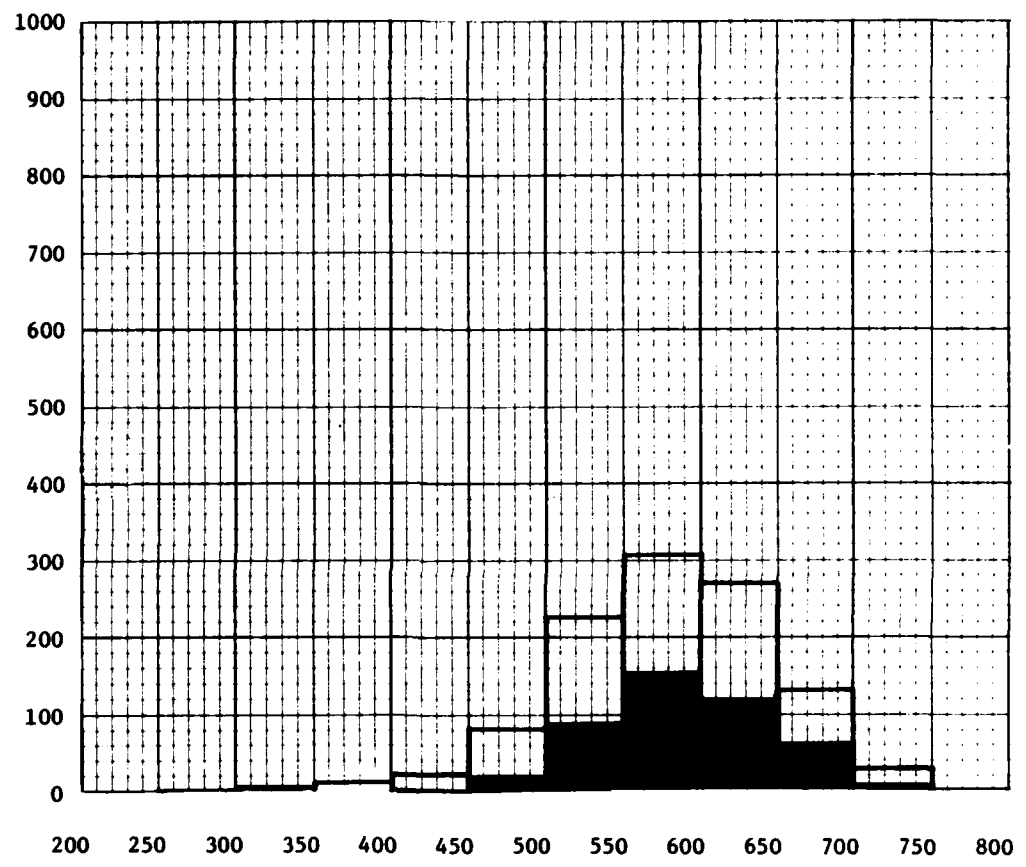
		<u>Number</u>	<u>Mean</u>	<u>SD</u>
Candidates	□	2365	577	72
Cadets	■	1011	589	58



	CEER Scores											
No. Candidates	0	2	3	33	61	222	486	634	571	263	81	9
% Entered	0	0	0	3.0	6.6	26.6	38.1	50.8	52.5	41.8	33.3	33.3
No. Cadets	0	0	0	1	4	59	185	322	300	110	27	3

FIGURE 1, COMPARISON OF THE NUMBER OF CADETS (EVALUATED USING CEER) WITH THE NUMBER OF FULLY EXAMINED CANDIDATES (EVALUATED USING CEER) AT EACH CEER SCORE LEVEL FOR THE CLASS OF 1984.

		<u>Number</u>	<u>Mean</u>	<u>SD</u>
Candidates	□	Candidates 1085	581	69
Cadets	■	Cadets 455	589	55



	ACEER Scores												
No. Candidates	0	1	2	11	21	80	225	307	270	137	30	1	
% Entered	0	0	0	0	4.8	23.8	40.9	51.5	44.1	43.8	20.0	0	
No. Cadets	0	0	0	0	1	19	92	158	119	60	6	0	

FIGURE 2. COMPARISON OF THE NUMBER OF CADETS (EVALUATED USING ACEER) WITH THE NUMBER OF FULLY EXAMINED CANDIDATES (EVALUATED USING ACEER) AT EACH ACEER SCORE LEVEL FOR THE CLASS OF 1984.

TABLE 1
DISTRIBUTION OF SCORES ON WHOLE CANDIDATE SCORE COMPONENTS
FOR THE CLASS OF 1984

Score Ranges	Academic		Male Physical Aptitude (PAE)		Female Physical Aptitude (PAE)		Leadership Potential (LPS)			
	CEER	ACEER								
	No.	%	No.	%	No.	%	No.	%	No.	%
750-800	3	0.3	0	0	19	1.4	4	2.6	4	0.3
700-749	27	2.7	6	1.3	50	3.8	6	3.9	61	4.2
650-699	110	10.9	60	13.2	114	8.7	10	6.6	287	19.6
600-649	300	29.7	119	26.2	188	14.3	15	9.9	434	29.6
550-599	322	31.8	158	34.7	309	23.5	17	11.2	349	23.8
500-549	185	18.3	92	20.2	325	24.8	34	22.4	217	14.8
450-499	59	5.8	19	4.2	207	15.8	43	28.9	88	6.0
400-499	4	0.4	1	0.2	79	6.0	20	13.2	24	1.6
350-399	1	0.1	0	0	3	0.2	1	0.7	2	0.1
300-349	0	0	0	0	1	0.1	0	0	0	0
250-299	0	0	0	0	1	0.1	1	0.7	0	0
200-249	0	0	0	0	2	0.2	0	0	0	0
Total	1011		455		1298		151		1466	
Mean	589		589		560		534		600	
S.D.	58		55		80		92		66	

TABLE 2
MEANS AND STANDARD DEVIATIONS FOR CEER, LPS, PAE
AND WCS, CLASS OF 1984

	CEER			LPS			PAE			WCS		
	N	Mean	SD	N	Mean	SD	N	Mean	SD	N	Mean	SD
A	6052	542	87	9132	546	85	4850	520	105	8175	5411	636
T	2365	577	72	3452	579	77	3457	534	94	3447	5742	495
M	2222	577	71	3244	580	76	3249	537	93	3239	5748	489
C	1011	589	58	1466	600	66	1450*	560	82	1466	5891	364

*PAE for Male Cadets: Means and Standard Deviations of PAE for candidates is for male and female combined.




MEANS AND STANDARD DEVIATIONS FOR ACEER, ACT-EN,
ACT-MA, AND ACT-NA, CLASS OF 1984

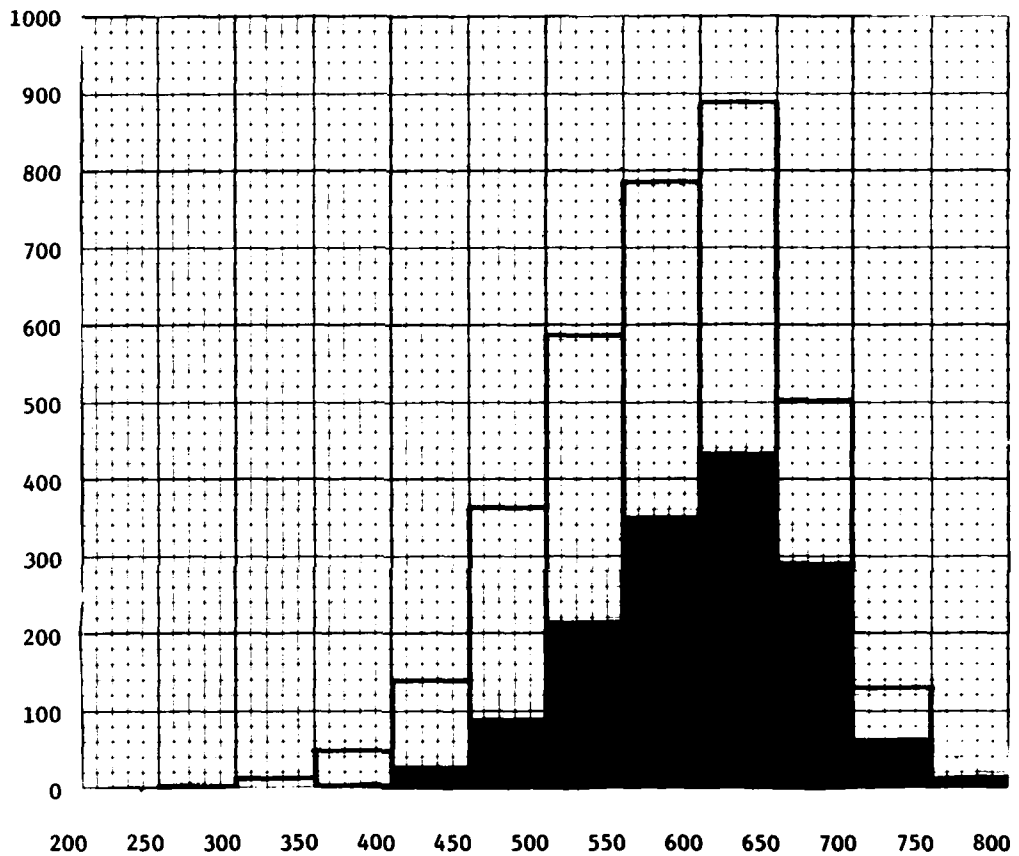
	ACEER			ACT-EN			ACT-MA			ACT-NA		
	N	Mean	SD	N	Mean	SD	N	Mean	SD	N	Mean	SD
A	2261	552	87	2261	22.0	4.1	2261	26.6	5.1	2261	27.6	4.9
T	1085	581	69	1085	23.0	3.5	1085	28.3	3.9	1085	28.6	3.8
M	1020	581	69	1020	23.0	3.5	1020	28.3	3.9	1020	28.6	3.8
C	455	589	55	455	23.2	3.3	455	28.9	3.2	455	28.7	3.5

MEANS AND STANDARD DEVIATIONS FOR SAT-V, SAT-M, AND
HSR, CLASS OF 1984

	SAT-V			SAT-M			HSR		
	N	Mean	SD	N	Mean	SD	N	Mean	SD
A	5596	509	97	5594	573	96	8791	523	116
T	2365	545	82	2365	610	77	3450	548	112
M	2222	545	81	2222	610	76	3242	547	112
C	1011	552	77	1011	623	64	1466	556	100



NOTE: A = All Candidates Tested on Variables
T = All Candidates Fully Tested on CEER (ACEER), LPS, PAE and WCS
M = All Candidates Fully Tested and Medically Qualified
C = Admitted Candidates Who Became Cadets

		<u>Number</u>	<u>Mean</u>	<u>SD</u>
Candidates		Candidates 3452	580	78
Cadets		Cadets 1466	600	66

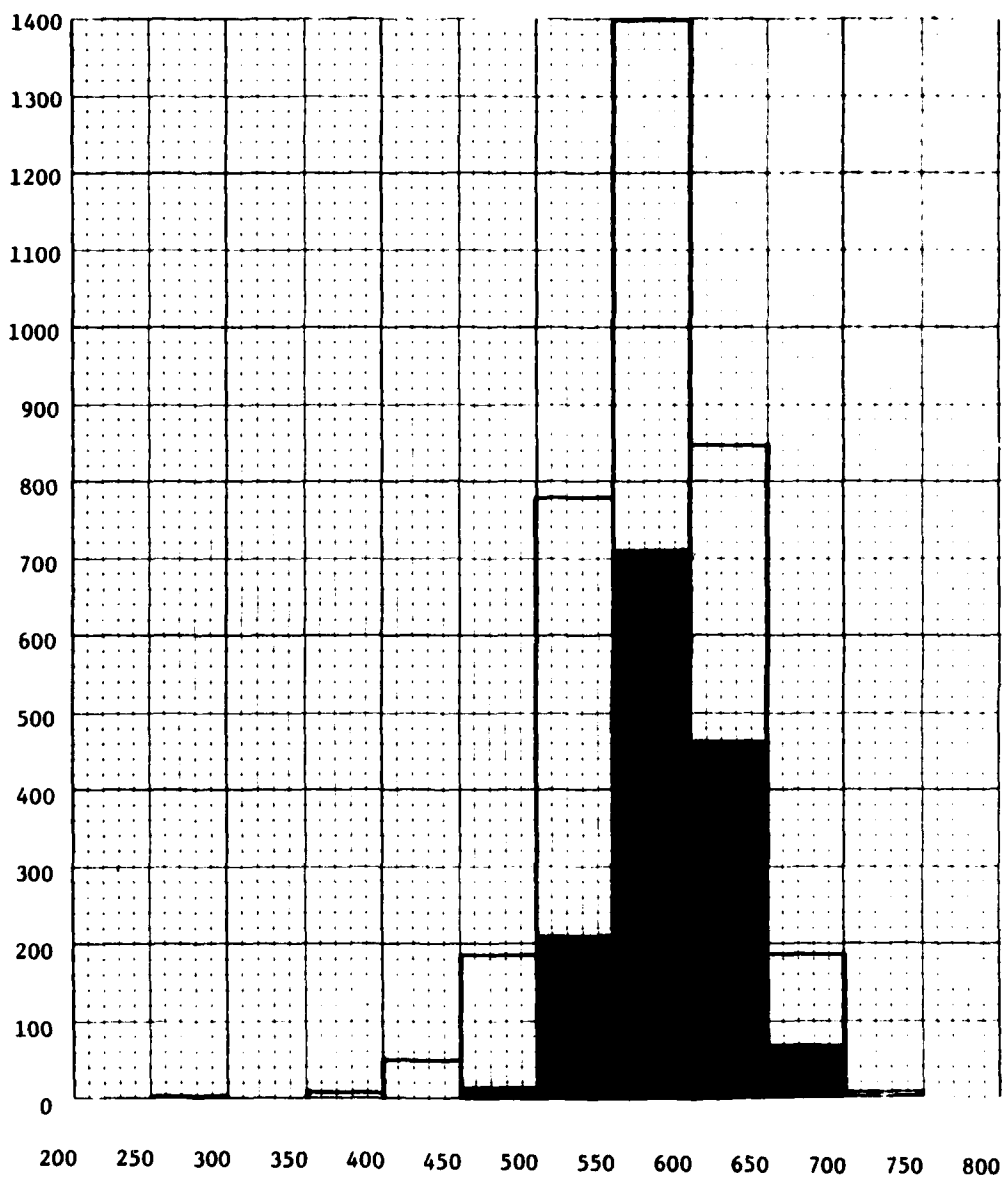


	LP Scores											
No. Candidates	0	1	12	44	139	363	586	783	888	501	128	7
% Entered	0	0	0	4.5	17.3	24.2	37.0	44.6	48.9	57.3	47.7	57.1
No. Cadets	0	0	0	2	24	88	217	349	434	287	61	4

FIGURE 3. COMPARISON OF THE NUMBER OF CADETS WITH THE NUMBER OF FULLY EXAMINED CANDIDATES AT EACH LEADERSHIP POTENTIAL LEVEL FOR THE CLASS OF 1984.

Candidates 
 Cadets 

	<u>Number</u>	<u>Mean</u>	<u>SD</u>
Candidates	3447	574	50
Cadets	1466	589	36



	Whole Candidate Scores (x10)											
No. Candidates	0	1	0	5	47	183	779	1399	844	184	5	0
% Entered	0	0	0	0	0	7.1	26.7	50.8	54.6	39.1	40.0	0
No. Cadets	0	0	0	0	0	13	208	710	461	72	2	0

FIGURE 4. COMPARISON OF THE NUMBER OF CADETS WITH THE NUMBER OF FULLY EXAMINED CANDIDATES AT EACH WHOLE CANDIDATE SCORE LEVEL FOR THE CLASS OF 1984.

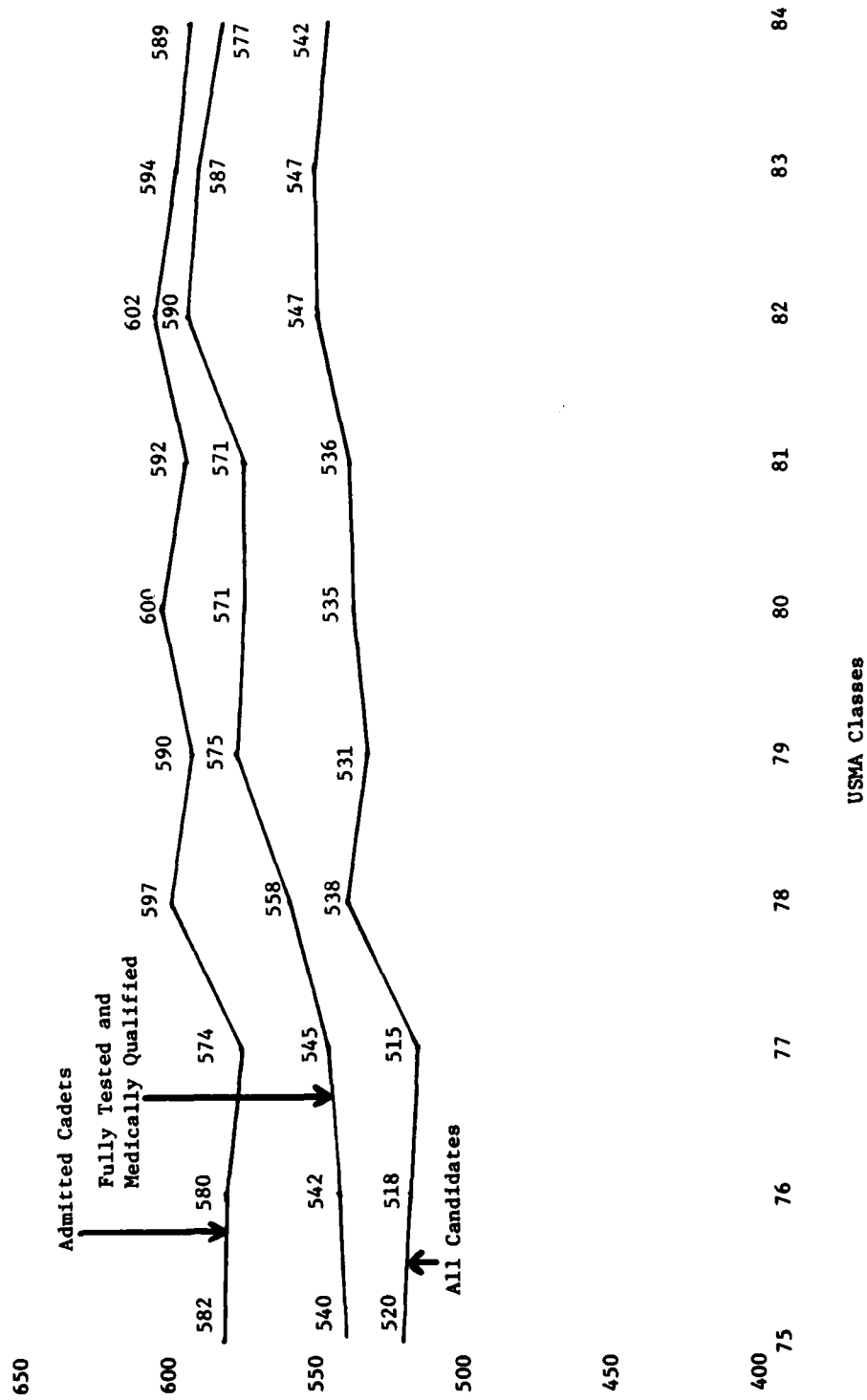
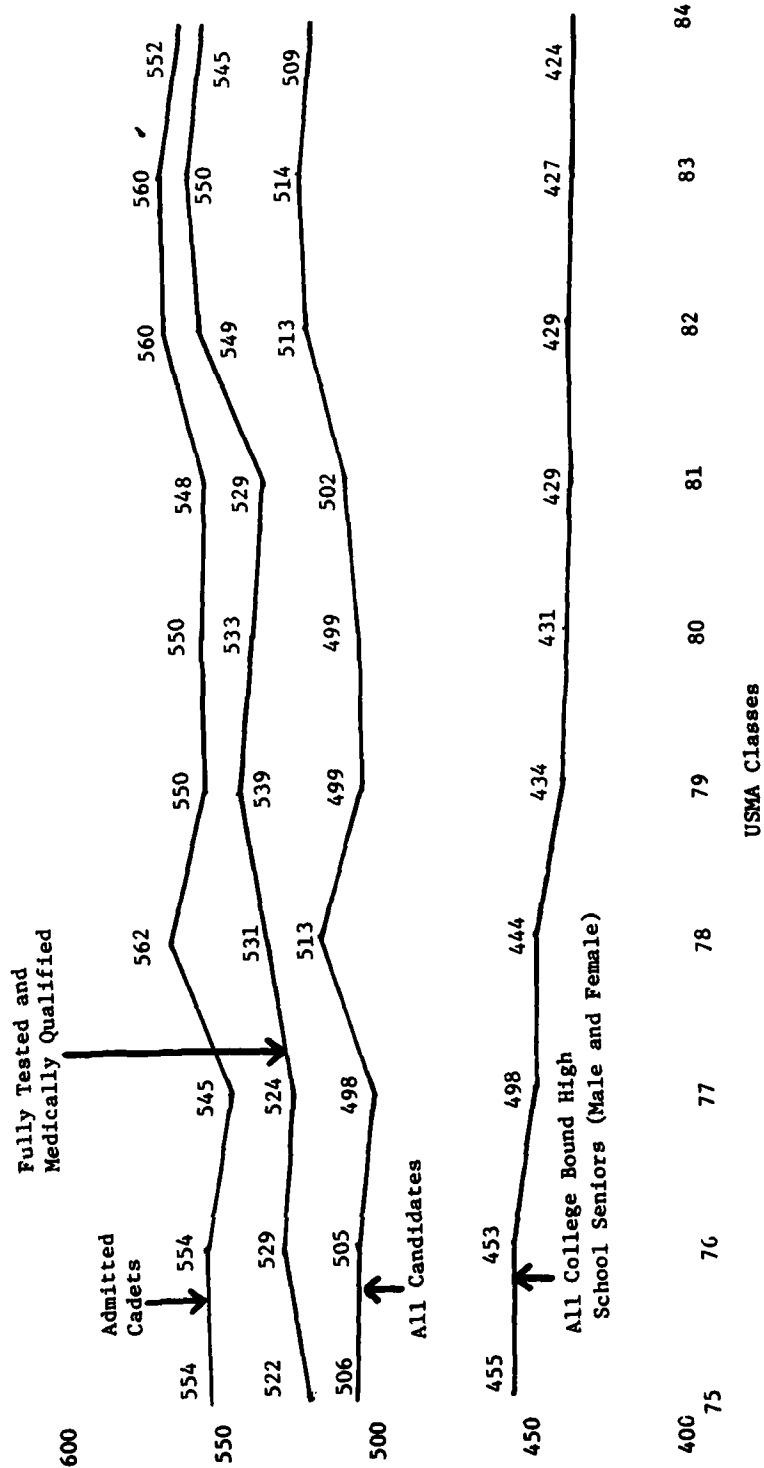


FIGURE 5. TRENDS OF MEAN CEER SCORES FOR THE CANDIDATES AND ENTERING CADETS OF THE CLASSES OF 1975 THROUGH 1984.

650



600

400

75

76

77

78

79

80

81

82

83

84

USMA Classes

FIGURE 6. TRENDS IN MEAN SAT-VERBAL SCORES FOR THE CANDIDATES AND ENTERING CADETS OF THE CLASSES OF 1975 THROUGH 1984 AND ALL COLLEGE BOUND HIGH SCHOOL SENIORS NATIONWIDE.

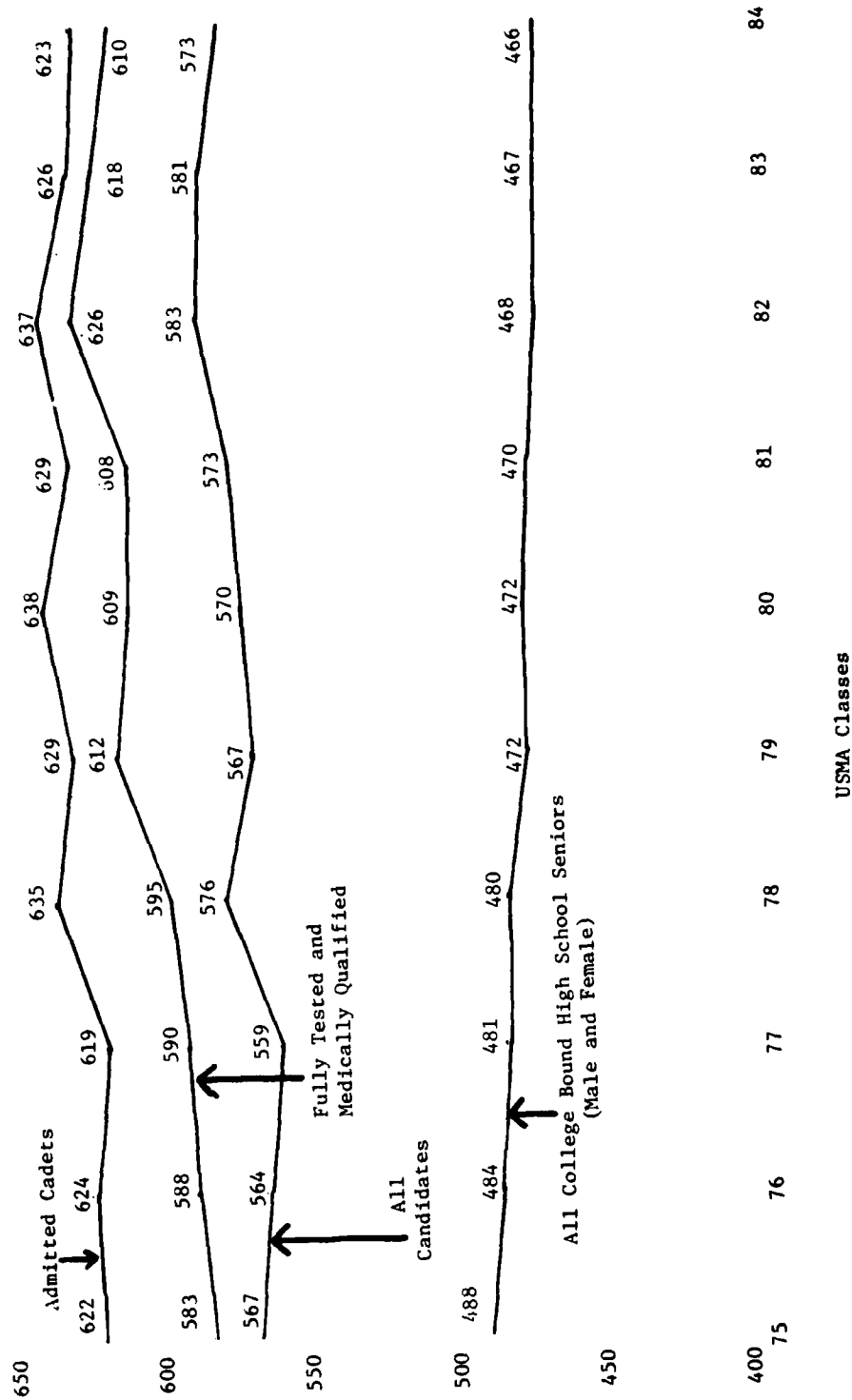


FIGURE 7. TRENDS OF MEAN SAT-MATHEMATICS SCORES FOR CANDIDATES AND ENTERING CADETS OF THE CLASSES OF 1975 THROUGH 1984 AND ALL COLLEGE BOUND HIGH SCHOOL SENIORS, NATIONWIDE.

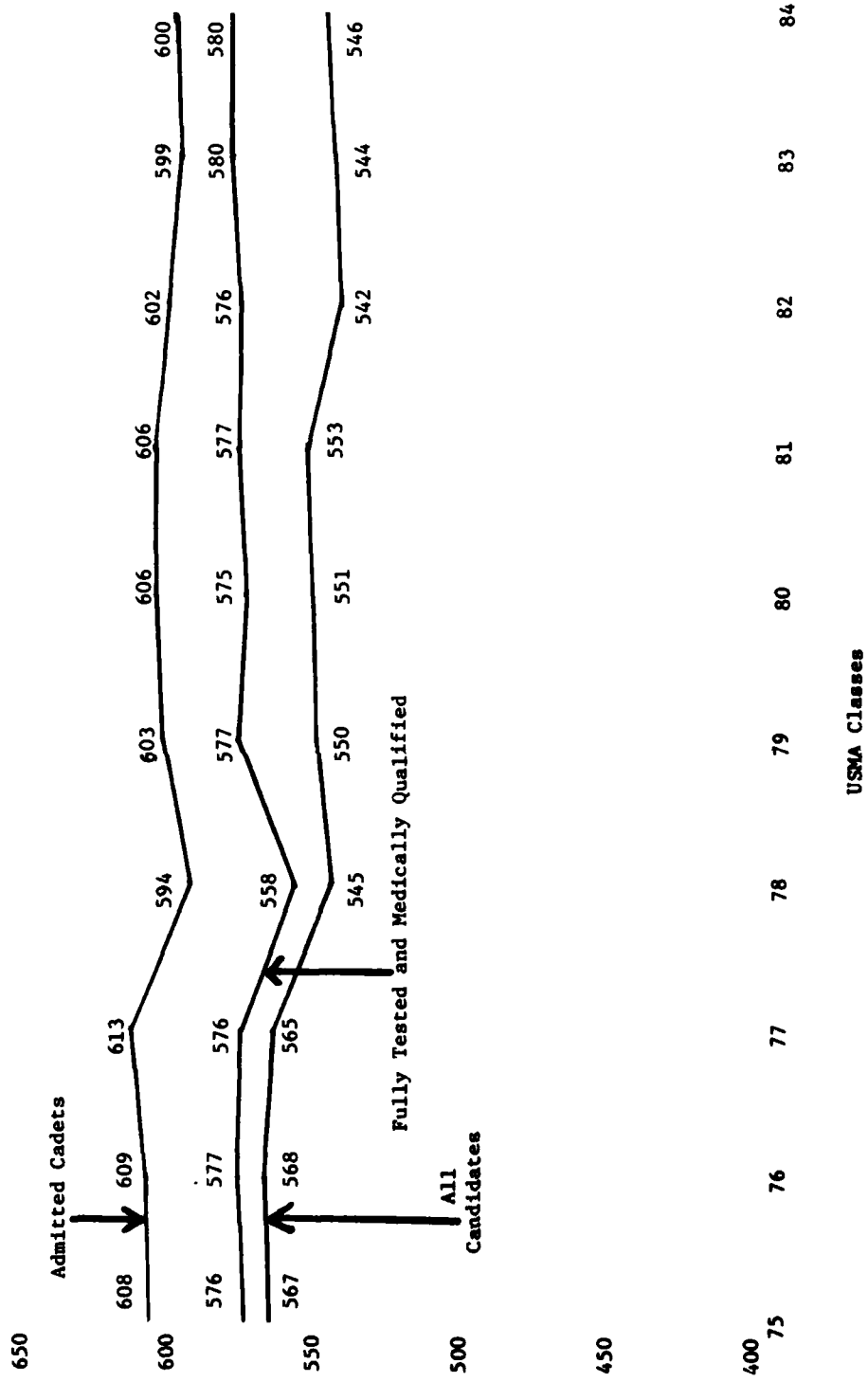


FIGURE 8. TRENDS OF MEAN LEADERSHIP POTENTIAL SCORES FOR THE CANDIDATES AND ENTERING CADETS OF THE CLASSES OF 1975 THROUGH 1984.

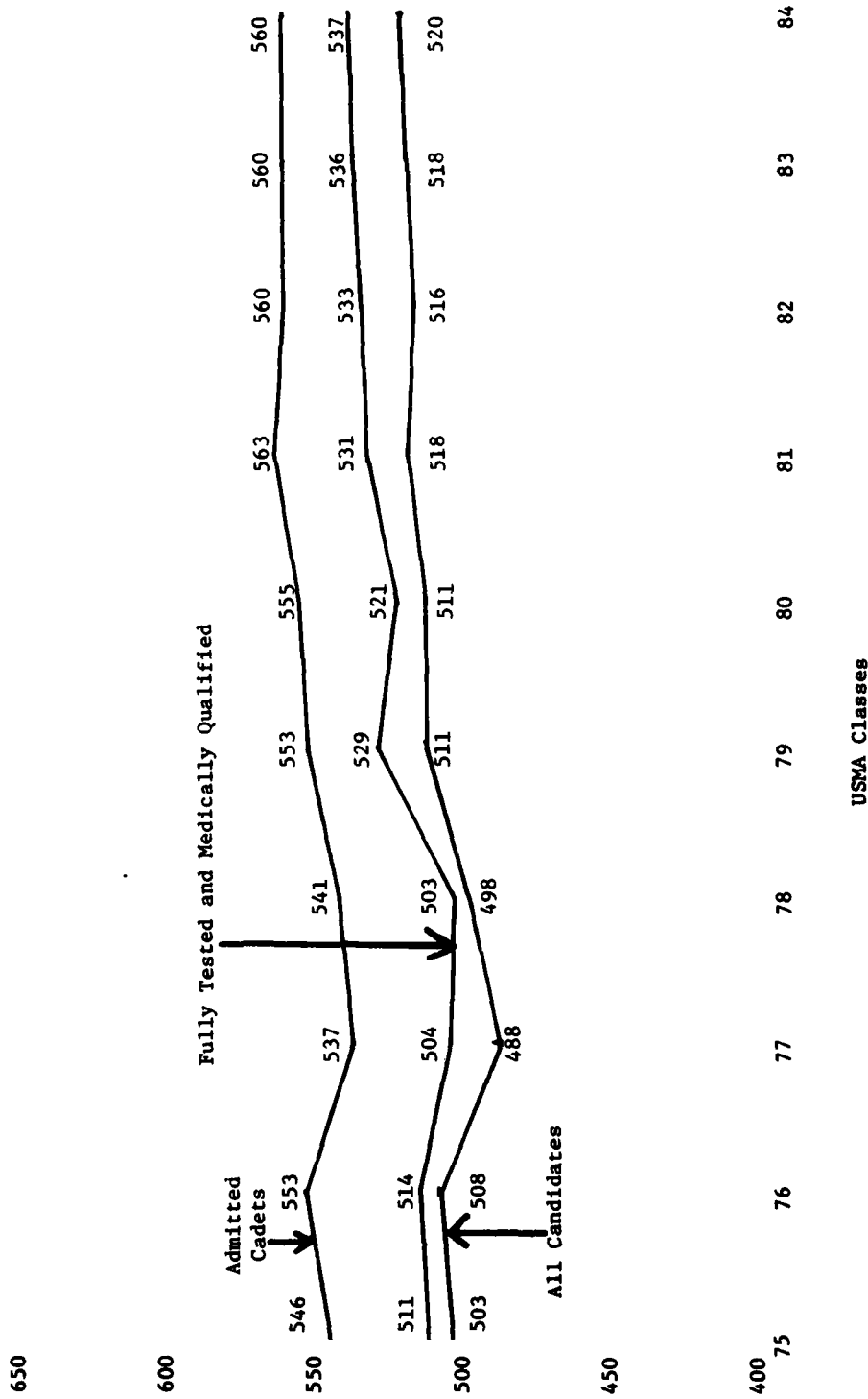


FIGURE 9. TRENDS OF MEAN PAE SCORES FOR THE CANDIDATES AND ENTERING CADETS OF THE CLASSES OF 1975 THROUGH 1984 (PAE for admitted cadets in Class of 1980-1984 is for male cadets only).

650

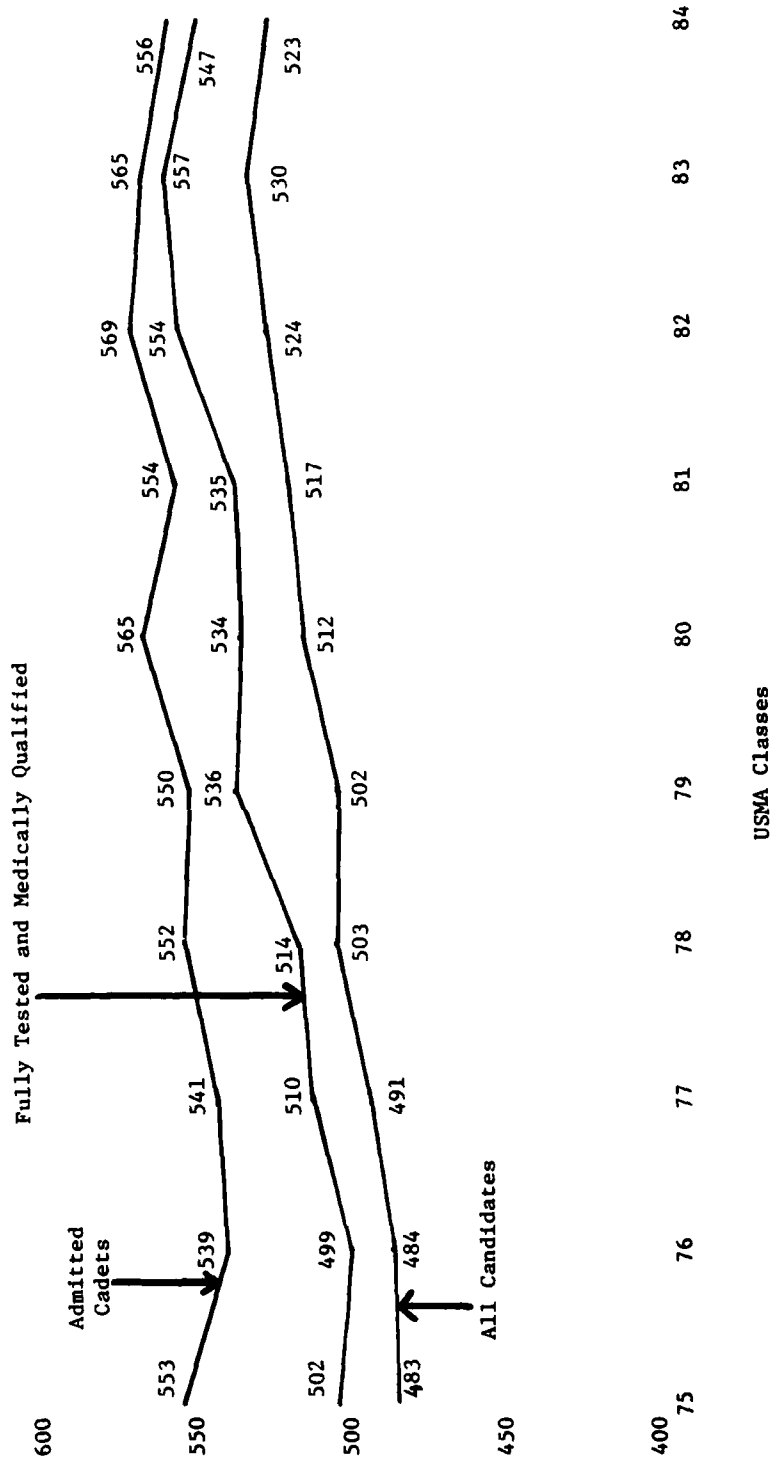


FIGURE 10. TRENDS OF MEAN HIGH SCHOOL RANK SCORES FOR THE CANDIDATES AND CADETS OF THE CLASSES OF 1975 THROUGH 1984.

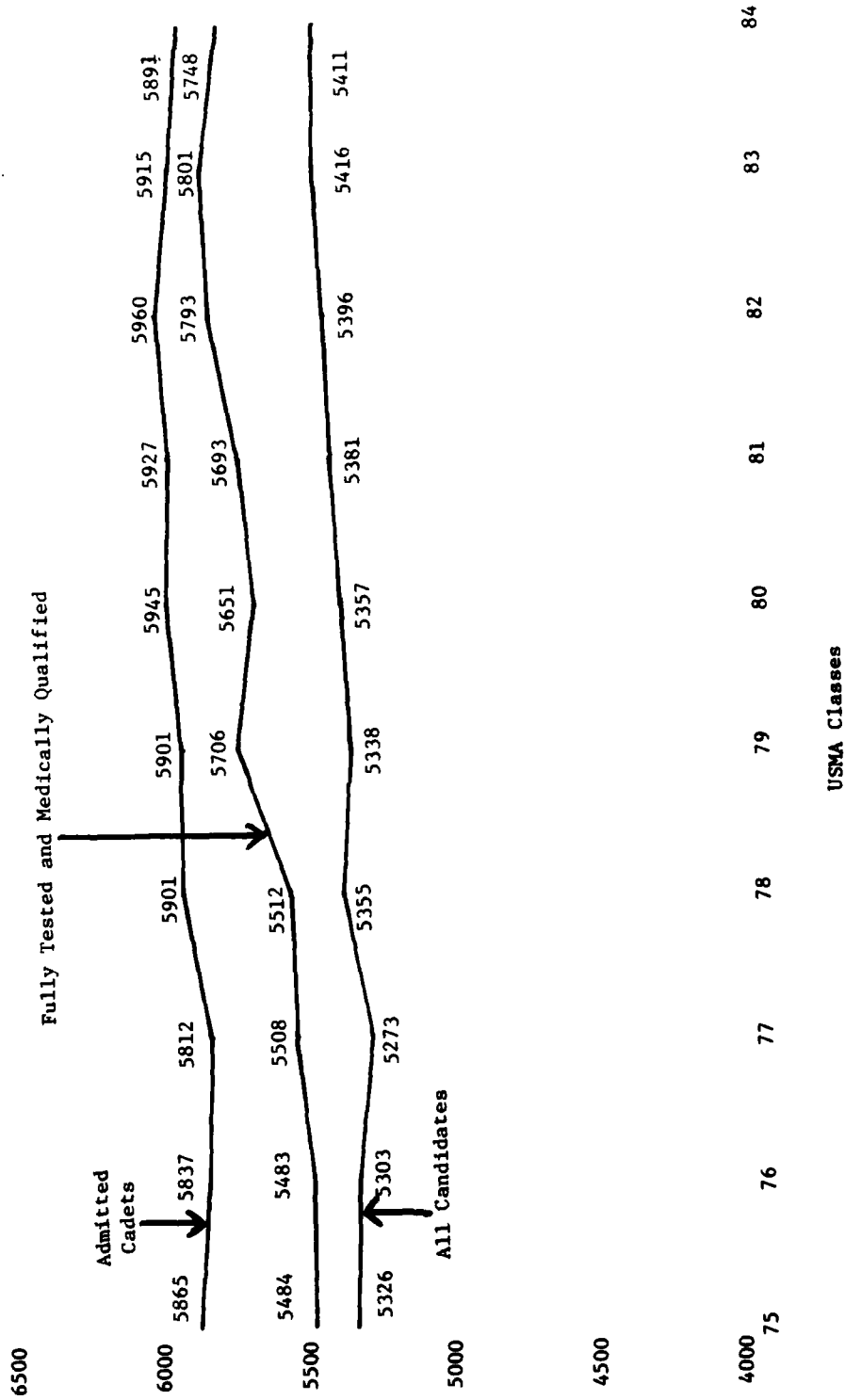


FIGURE 11. TRENDS OF MEAN WHOLE CANDIDATE SCORES FOR THE CANDIDATES AND ENTERING CADETS OF THE CLASSES OF 1975 THROUGH 1984.

TABLE 3

SELECTED HIGH SCHOOL ACTIVITIES AND AWARDS OF ENTERING CADETS IN THE CLASSES OF 1976 THROUGH 1984

	CLASS								
	1976	1977	1978	1979	1980	1981	1982	1984	
Senior Class	55 (4.0%)	67 (4.9%)	68 (4.7%)	95 (6.6%)	86 (5.8%)	91 (6.2%)	65 (4.7%)	77 (5.5%)	68 (4.7%)
President	110 (8.0%)	184 (13.4%)	167 (11.6%)	163 (11.4%)	184 (12.4%)	192 (13.1%)	177 (12.8%)	187 (13.4%)	235 (16.1%)
Officer	60 (4.4%)	62 (4.5%)	62 (4.3%)	66 (4.6%)	73 (4.9%)	97 (6.6%)	73 (5.3%)	81 (5.8%)	63 (4.3%)
Student Body	111 (8.1%)	139 (10.1%)	135 (9.4%)	127 (8.9%)	147 (9.9%)	163 (11.1%)	160 (11.5%)	159 (11.4%)	158 (10.8%)
President	1112 (80.7%)	1079 (78.4%)	1137 (79.2%)	1138 (79.3%)	1199 (80.7%)	1219 (82.9%)	1161 (83.2%)	1151 (82.3%)	1228 (84.3%)
Team Captains	466 (33.8%)	458 (33.3%)	499 (34.8%)	529 (36.9%)	562 (37.8%)	654 (44.5%)	599 (42.9%)	629 (45.0%)	688 (47.2%)
Scouts, All	757 (54.9%)	794 (57.7%)	723 (50.4%)	756 (52.7%)	790 (53.2%)	804 (54.7%)	748 (53.6%)	761 (54.4%)	733 (50.3%)
Scouts, Eagle	204 (14.8%)	190 (13.8%)	184 (12.8%)	206 (14.4%)	185 (12.5%)	209 (14.2%)	142 (11.2%)	182 (13.0%)	174 (11.9%)
Boys/girls									
State Rep-									
representative	270 (19.6%)	293 (21.3%)	302 (21.0%)	346 (24.1%)	311 (20.9%)	315 (21.4%)	275 (19.8%)	310 (22.2%)	333 (22.9%)
High School									
Dramatic Club	169 (12.3%)	151 (11.0%)	153 (10.7%)	165 (11.5%)	173 (11.6%)	209 (14.2%)	215 (15.5%)	209 (14.9%)	229 (15.7%)
Bausch & Lomb									
Science Award	26 (1.9%)	25 (1.8%)	31 (2.2%)	39 (2.7%)	38 (2.6%)	38 (2.6%)	30 (2.2%)	28 (2.0%)	30 (2.1%)
American Legion									
Award	120 (8.7%)	128 (9.3%)	112 (7.8%)	131 (9.1%)	120 (8.1%)	145 (9.9%)	128 (9.2%)	138 (9.9%)	136 (9.3%)

TABLE 3a
SELECTED CHARACTERISTICS OF CADETS IN THE CLASSES OF 1976 THROUGH 1984

	CLASS								
	1976	1977	1978	1979	1980	1981	1982	1983	1984
Cadets With 1 or More Months of College	194 (14.1%)	201 (14.6%)	195 (13.6%)	217 (15.5%)	225 (15.2%)	263 (17.9%)	213 (15.3%)	260 (18.6%)	215 (14.1%)
Sons or Daughters of Alumni of USMA	59 (4.3%)	64 (4.7%)	50 (3.5%)	64 (4.5%)	59 (4.0%)	62 (4.2%)	57 (4.1%)	59 (4.2%)	54 (3.7%)
Attended USMA Preparatory School	156 (11.3%)	194 (14.1%)	187 (13.0%)	211 (14.7%)	179 (12.1%)	162 (11.0%)	211 (15.2%)	207 (14.8%)	191 (13.1%)
Attended Public High School	1171 (85.0%)	1129 (82.0%)	1216 (84.8%)	1231 (85.9%)	1283 (86.4%)	1259 (85.7%)	1194 (85.4%)	1201 (85.9%)	1246 (85.2%)
Attended Private High School	206 (15.0%)	247 (18.0%)	219 (15.2%)	202 (14.1%)	198 (13.4%)	208 (14.2%)	201 (14.5%)	197 (14.1%)	220 (14.8%)
Rank in High School Class									
Top Fifth	966 (70.1%)	928 (67.4%)	1019 (71.0%)	1011 (70.6%)	1116 (75.2%)	1070 (72.9%)	1055 (75.5%)	1021 (73.0%)	1003 (68.6%)
Second Fifth	297 (21.6%)	317 (23.0%)	290 (20.2%)	310 (21.6%)	260 (17.5%)	287 (19.5%)	241 (17.2%)	253 (18.1%)	335 (22.9%)
Third Fifth	98 (7.2%)	106 (7.7%)	99 (6.9%)	90 (6.3%)	90 (6.3%)	95 (6.5%)	89 (6.4%)	102 (7.3%)	102 (7.0%)
Fourth Fifth	14 (1.0%)	21 (1.5%)	20 (1.4%)	15 (1.1%)	12 (0.8%)	13 (0.9%)	8 (0.6%)	18 (1.3%)	16 (1.1%)
Bottom Fifth	2 (0.2%)	2 (0.2%)	5 (0.4%)	2 (0.1%)	3 (0.2%)	2 (0.1%)	2 (0.1%)	3 (0.2%)	4 (0.3%)
Valedictorians	65 (4.7%)	59 (4.3%)	81 (5.6%)	86 (6.0%)	83 (5.6%)	90 (6.1%)	86 (6.2%)	77 (5.5%)	58 (4.0%)
Salutatorians	32 (2.3%)	53 (3.9%)	56 (3.9%)	58 (4.0%)	58 (3.9%)	66 (4.5%)	62 (4.5%)	58 (4.1%)	60 (4.1%)
N =	1378	1376	1435	1433	1485	1469	1396	1398	1466

