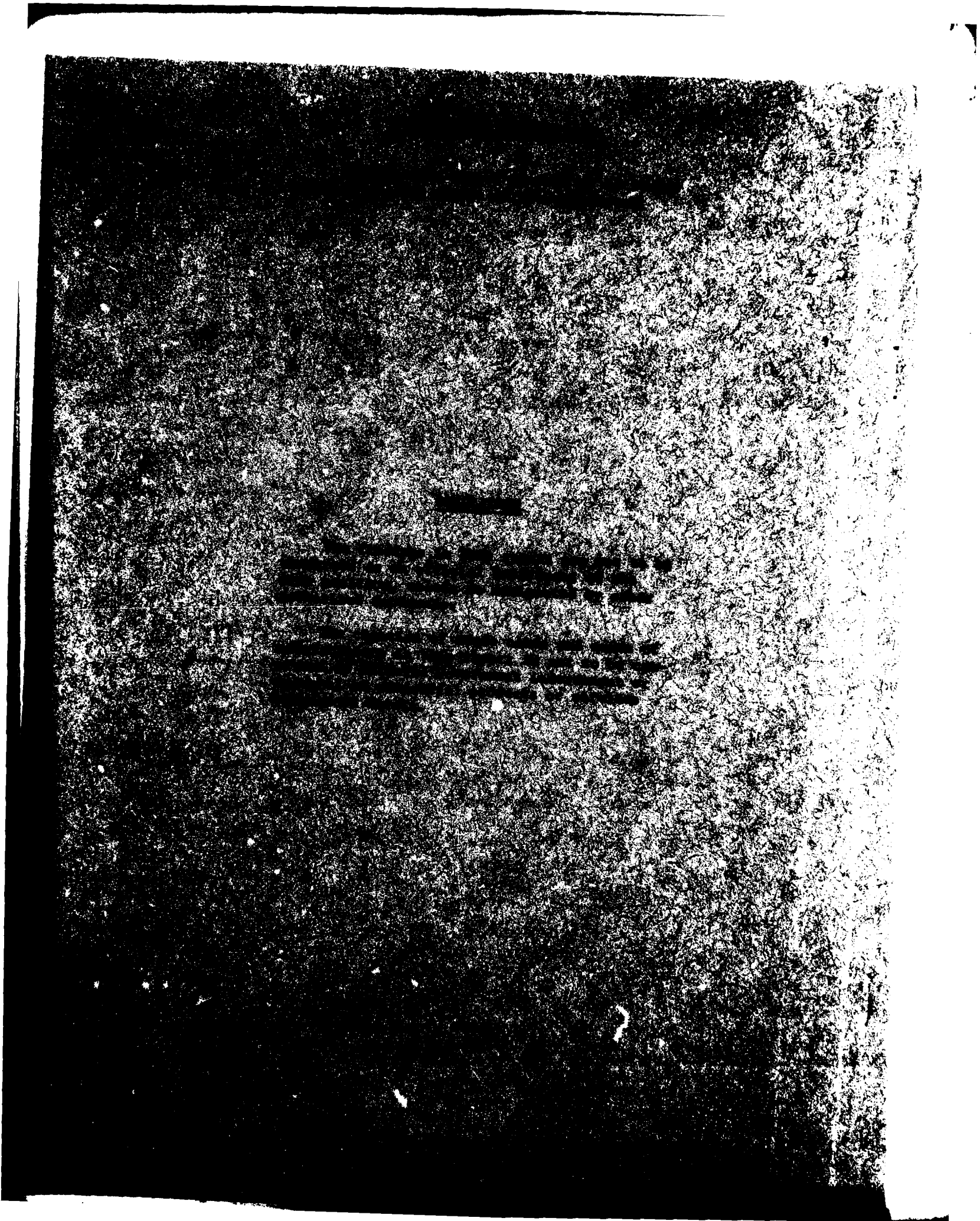


AD A102287

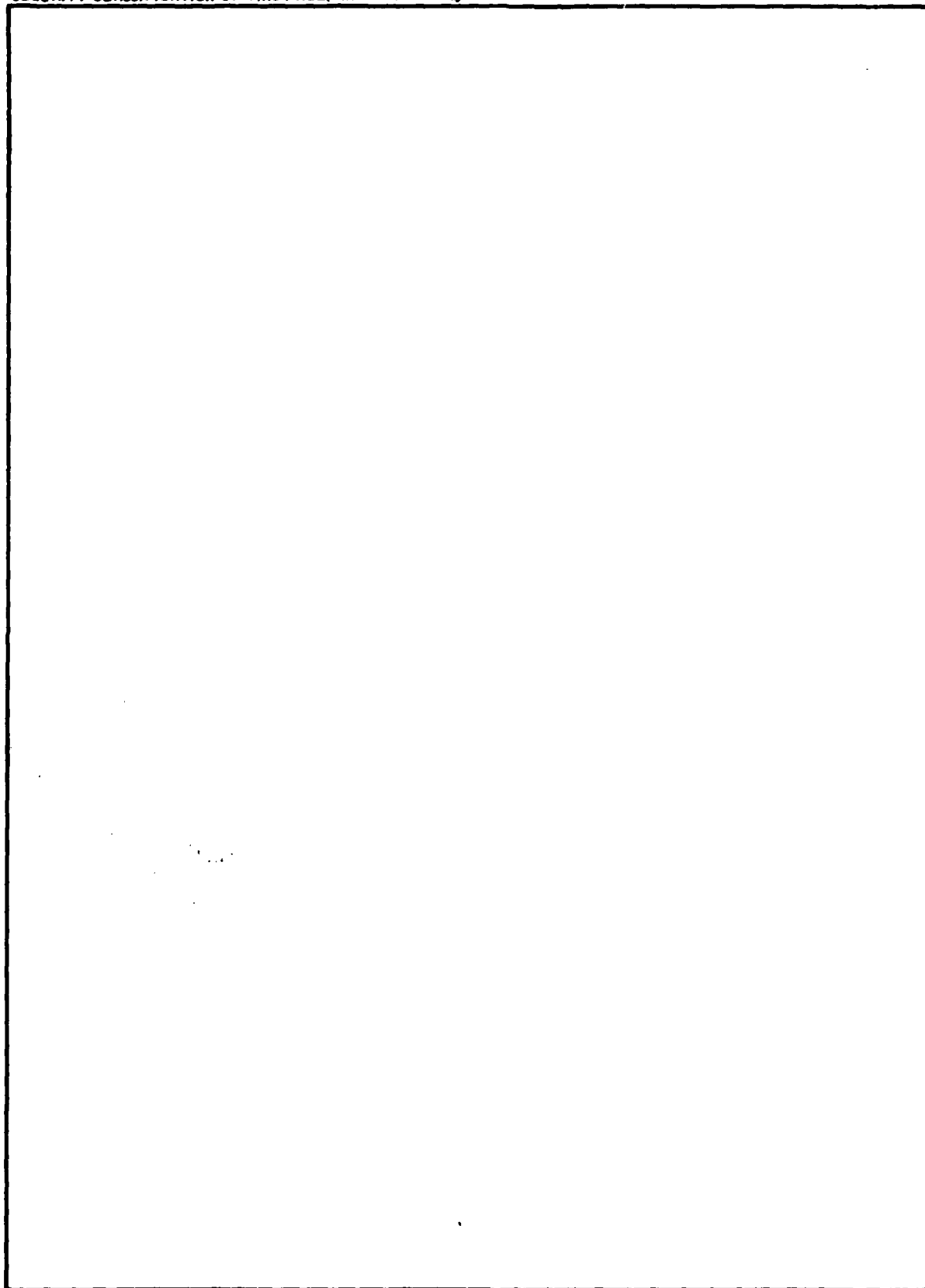


14 / 14818C LANCE / 14818C LANCE

REPORT DOCUMENTATION PAGE		READ INSTRUCTIONS BEFORE COMPLETING FORM
1. REPORT NUMBER DR 1185	2. GOVT ACCESSION NO. AD-A102287	3. RECIPIENT'S CATALOG NUMBER
4. TITLE (and Subtitle) 14818C LANCE Missile Number 5338 Round Number 365APT		5. TYPE OF REPORT & PERIOD COVERED
		6. PERFORMING ORG. REPORT NUMBER
7. AUTHOR(s) White Sands Meteorological Team		8. CONTRACT OR GRANT NUMBER(s) DA Task 1F665702D127-02
9. PERFORMING ORGANIZATION NAME AND ADDRESS 33		10. PROGRAM ELEMENT, PROJECT, TASK AREA & WORK UNIT NUMBERS 11/1
11. CONTROLLING OFFICE NAME AND ADDRESS US Army Electronics Research & Development Cmd Atmospheric Sciences Laboratory White Sands Missile Range, New Mexico 88002		12. REPORT DATE June 1981
		13. NUMBER OF PAGES 32
14. MONITORING AGENCY NAME & ADDRESS (if different from Controlling Office) US Army Electronics Research & Development Cmd Adelphi, MD 20783		15. SECURITY CLASS. (of this report) UNCLASSIFIED
		15a. DECLASSIFICATION/DOWNGRADING SCHEDULE
16. DISTRIBUTION STATEMENT (of this Report)		
17. DISTRIBUTION STATEMENT (of the abstract entered in Block 20, if different from Report) Approved for public release; distribution unlimited.		
18. SUPPLEMENTARY NOTES		
19. KEY WORDS (Continue on reverse side if necessary and identify by block number)		
20. ABSTRACT (Continue on reverse side if necessary and identify by block number) Meteorological data gathered for the launching of the 14818C LANCE, Missile No. 5338, Round No. 365APT, presented in tabular form.		

STIC
ELECTRONIC
AUG 3 1981
S.C.D.

SECURITY CLASSIFICATION OF THIS PAGE(When Data Entered)



SECURITY CLASSIFICATION OF THIS PAGE(When Data Entered)

CONTENTS

	PAGE
INTRODUCTION-----	1
DISCUSSION-----	1
MAP-----	2
TABLES:	
1. Surface Observations taken at 1337 MDT at LC-39-----	3
2. LC-39 Pilot-Balloon Measured Wind Data at 1327 MDT-----	4
3. LC-39 Pilot-Balloon Measured Wind Data at 1337 MDT-----	5
4. Computer Met Messages-----	6
5. WSD Significant Level Data at 1320 MDT-----	7
6. WSD Upper Air Data at 1320 MDT-----	8
7. WSD Mandatory Levels at 1320 MDT-----	13
8. APA Significant Level Data at 1300 MDT-----	14
9. APA Upper Air Data at 1300 MDT-----	15
10. APA Mandatory Levels at 1300 MDT-----	20
11. NW-30 Significant Level Data at 1320 MDT-----	21
12. NW-30 Upper Air Data at 1320 MDT-----	23
13. NW-30 Mandatory Levels at 1320 MDT-----	28

Accession For	
NTIS Grant	<input checked="" type="checkbox"/>
DTIC TAB	<input type="checkbox"/>
Unannounced	<input type="checkbox"/>
Justification	
By	
Distribution/	
Availability Codes	
Avail and/or	
Dist	Special
A	

INTRODUCTION

14818C LANCE, Missile Number 5338, Round Number 365APT, was launched from LC-39, White Sands Missile Range (WSMR), New Mexico, at 1336:39 MDT, 16 June 1981. The scheduled launch time was 1230 MDT.

DISCUSSION

Meteorological data were recorded and reduced by the White Sands Meteorological Team, Atmospheric Sciences Laboratory (ASL), White Sands Missile Range, New Mexico. The data were obtained by the following methods:

1. Observations:

a. Surface

(1) Standard surface observations to include pressure, temperature ($^{\circ}$ C), relative humidity, dew point ($^{\circ}$ C), density (gm/m^3), wind direction and speed, and cloud cover were made at the LC-39 Met Site at T-0 minutes.

(2) Monitor of wind speed and direction from one anemometer was provided in the launch control room.

b. Upper Air:

(1) Low level wind data were obtained from RAPTS T-9 pibal observations at:

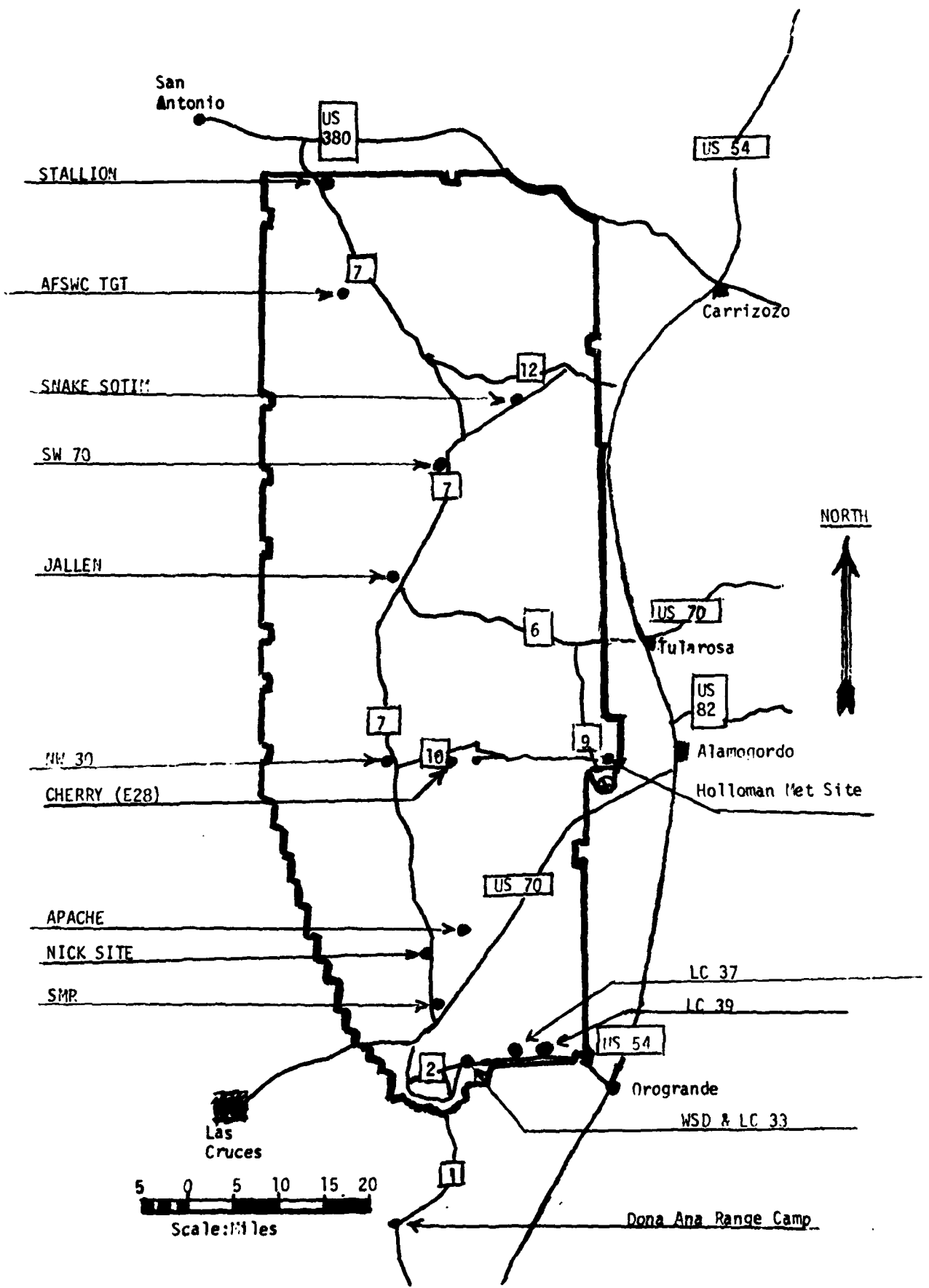
SITE AND ALTITUDE

LC-39	2400 Meters
LC-39	2760 Meters

(2) Air structure data (rawinsonde) were collected at the following Met Sites. Data were collected from surface to high as possible in 500-foot increments.

SITE AND TIME

WSD	1320 MDT
APA	1300 MDT
NW-30	1320 MDT



PROJECT SURFACE OBSERVATION

TABLE 1 STATION LC-39

DATE 16 DAY June MONTH 1981 YEAR X = 530,938.82 Y = 186,564.96 H = 4063.75

TIME M D J	PRESSURE mbs	TEMPERATURE of °C	DEW POINT of °C	RELATIVE HUMIDITY %	DENSITY gm/m ³	WIND		VISIBIL- ITY
						DIRECTION degs In	SPEED kts	
1337	884.6	26.4	0.5	19	1024	136	08	50

OBSTRUCTIONS TO VISIBILITY	CLOUDS						REMARKS
	1st LAYER		2nd LAYER		3rd LAYER		
	AMT	HGT	AMT	HGT	AMT	HGT	
	1	CI	20,000				

PSYCHROMETRIC COMPUTATION

TIME:	MDT	1337
DRY BULB TEMP.		26.4
WET BULB TEMP.		12.3
WET BULB DEPR.		14.1
DEW POINT		00.5
RELATIVE HUMID.		19

COMPUTER MET MESSAGES
16 June 1981

WSD 1320 MDT
METCM1324064
161930122888
00196012 30200888
01211019 29830878
02207018 29530853
03188014 29120814
04197019 28630767
05209014 28210723
06232008 27820680
07170011 27530639
08126006 27610601
09090013 27330565
10097012 27070531
11024007 26800498
12618008 26180452
13584016 25340396
14552019 24570346
15542020 23820300
16445033 23160260
17425045 22560224
18434044 22010192
19444034 21520164
20464030 20980140
21496021 20660119
22547006 20500101
23262013 20410086
24237011 20650072
25159006 21090062
26188012 21410053

APA 1300 MDT
METCM1324064
161900121889
00249012 30240889
01257017 29950879
02246016 29580854
03221014 29180815
04230016 28680769
05247020 28180724
06246016 27750681
07219009 27650640
08053008 27550602
09081016 27270566
10069011 27070531
11046008 26750499
12577012 26150453
13570019 25350397
14553012 24560346
15535018 23770301
16450024 23050260
17440044 22460224
18435040 21980192
19438032 21490164
20457028 21030140
21497021 20660119
22525008 20520101
23268010 20520086
24207006 20670073
25147009 21080062
26210010 21400053

NE-30 1320 MDT
METCM1329065
161930122886
00267007 30420886
01273012 30170876
02265014 29660852
03261016 29210813
04272013 28700766
05MISG 28240722
06MISG 27800679
07MISG 27560639
08MISG 27450600
09MISG 27310564
10MISG 27040530
11MISG 26710497
12564009 26080451
13573014 25310395
14571017 24550345
15555016 23720300
16465025 22970259
17440037 22450223
18437041 21940191
19433031 21530164
20469028 20980139
21503023 20620118
22000000 20470100
23254009 20420085
24231004 20730072
25165002 21050061
26176017 21500052

STATION ALTITUDE 3989.00 FEET MSL
 16 JUNE 81 1320 HRS MDT
 ASCENSION NO. 3914

SIGNIFICANT LEVEL DATA
 1670020394
 WHITE SANDS

GEODEIC COORDINATES
 32.40043 LAT DEG
 106.37033 LON DEG

TABLE 5

PRESSURE MILLIBARS	GEOMETRIC ALTITUDE MSL FEET	TEMPERATURE AIR DEGREES CENTIGRADE	REL. HUM. PERCENT
887.6	3989.0	2.3	19.0
875.6	4381.7	-5	20.0
850.0	5227.8	1.9	28.0
786.2	7418.5	-1.5	33.0
737.8	9167.6	-4.4	36.0
700.0	10594.1	-7.6	36.0
636.6	13126.9	-19.4	20.0
609.6	14277.6	-18.3	18.0
548.8	17057.5	-22.3	18.0
500.0	19482.5	-25.5	18.0
400.0	25095.4	-36.2	21.0
300.0	31912.5	-43.4	21.0
250.0	36024.5	-51.9	
200.0	40880.3	-60.4	
155.2	46193.6	-60.7	
150.0	46893.3	-63.1	
143.0	47868.4	-67.4	
116.8	51933.2	-66.2	
113.6	52487.1	-69.0	
103.6	54317.6	-67.7	
100.0	55017.6	-70.0	
74.8	60752.7	-63.4	
70.0	62077.0	-64.3	
67.0	62963.7	-58.0	
50.0	68967.1	-49.6	
30.0	79817.4	-45.8	
20.0	86677.6	-42.3	
13.4	97578.0		

STATION ALTITUDE 3989.00 FEET MSL
 16 JUNE 81 1320 HRS MDT
 ASCENSION NO. 394

UPPER AIR DATA
 1670020394
 WHITE SANDS

GEODETIC COORDINATES
 32.40043 LAT DEG
 106.37033 LON DEG

TABLE 6

GEOMETRIC ALTITUDE MSL FEET	PRESSURE MILLIBARS	TEMPERATURE AIR DEGREES	TEMPERATURE DEWPOINT CENTIGRADE	REL. HUM. PERCENT	DENSITY GM/CUBIC METER	SPEED OF SOUND KNOTS	WIND DATA		INDEX OF REFRACTION
							DIRECTION DEGREES(TN)	SPEED KNOTS	
3989.0	887.6	28.1	2.3	19.0	1023.3	677.2	110.0	12.0	1.000258
4000.0	887.3	28.0	2.2	19.0	1023.3	677.1			1.000258
4500.0	872.0	23.4	-0.0	21.1	1021.6	671.8			1.000254
5000.0	856.8	21.8	1.4	25.8	1008.9	670.1			1.000254
5500.0	841.8	20.3	1.5	28.6	996.3	668.4			1.000252
6000.0	826.9	18.8	.8	29.8	983.8	666.7			1.000248
6500.0	812.3	17.3	.0	30.9	971.5	664.9	105.7	13.2	1.000244
7000.0	798.0	15.8	-0.8	32.0	959.3	663.2	108.6	15.1	1.000240
7500.0	783.9	14.4	-1.6	33.1	947.2	661.5	111.0	22.3	1.000236
8000.0	769.8	13.0	-2.4	34.0	934.7	659.9	106.4	22.8	1.000232
8500.0	755.9	11.7	-3.3	34.9	922.3	658.3	109.0	23.3	1.000228
9000.0	742.3	10.4	-4.2	35.7	910.1	656.7	113.3	18.3	1.000224
9500.0	728.8	9.1	-5.2	36.0	897.7	655.2	118.6	12.7	1.000220
10000.0	715.5	7.8	-6.3	36.0	885.4	653.7	124.0	10.2	1.000216
10500.0	702.4	6.5	-7.4	36.0	873.3	652.1	127.2	10.5	1.000211
11000.0	689.4	5.5	-9.3	33.4	860.6	650.8	127.0	9.6	1.000206
11500.0	676.6	4.4	-11.5	30.3	848.1	649.5	123.5	7.7	1.000201
12000.0	664.1	3.4	-13.8	27.1	835.6	648.2	115.1	6.7	1.000197
12500.0	651.7	2.3	-16.2	24.0	823.4	646.9	102.6	6.6	1.000192
13000.0	639.6	1.3	-18.7	20.8	811.3	645.6	95.9	7.3	1.000188
13500.0	627.7	1.9	-19.0	19.4	794.4	646.4	94.5	8.5	1.000184
14000.0	616.0	3.1	-18.5	18.5	776.1	647.8	91.2	9.2	1.000180
14500.0	604.5	3.4	-18.6	18.0	760.8	648.2	86.3	9.4	1.000176
15000.0	593.2	2.6	-19.3	18.0	748.9	647.1	78.2	9.8	1.000173
15500.0	582.1	1.7	-20.0	18.0	737.2	646.1	60.1	10.6	1.000170
16000.0	571.2	.8	-20.8	18.0	725.7	645.1	50.9	11.7	1.000168
16500.0	560.5	-0.0	-21.5	18.0	714.4	644.1	50.7	12.7	1.000165
17000.0	550.0	-0.9	-22.2	18.0	703.3	643.0	48.6	12.9	1.000162
17500.0	539.6	-1.7	-22.9	18.0	692.0	642.1	49.3	12.1	1.000159
18000.0	529.3	-2.5	-23.5	18.0	680.9	641.1	40.7	10.8	1.000156
18500.0	519.2	-3.3	-24.2	18.0	669.9	640.1	41.3	9.3	1.000154
19000.0	509.4	-4.1	-24.9	18.0	659.2	639.2	23.3	7.6	1.000151
19500.0	499.7	-4.9	-25.5	18.0	648.6	638.2	0.6	6.9	1.000148
20000.0	489.8	-6.2	-26.5	18.3	639.0	636.6	.1	6.9	1.000146
20500.0	480.2	-7.5	-27.4	18.5	629.5	635.1	359.6	6.2	1.000144
21000.0	470.7	-8.8	-28.3	18.8	620.2	633.5	2.4	5.3	1.000141
21500.0	461.5	-10.1	-29.3	19.1	611.0	631.9	357.3	6.1	1.000139
22000.0	452.4	-11.4	-30.2	19.3	601.9	630.4	352.0	7.3	1.000137
22500.0	443.5	-12.7	-31.1	19.6	593.1	628.8	344.8	9.4	1.000135
23000.0	434.7	-14.0	-32.1	19.9	584.3	627.2	340.8	11.2	1.000132

XX WIND DATA INVALID DUE TO MISSING RAW AZIMUTH AND ELEVATION ANGLES.

STATION ALTITUDE 3989.00 FEET MSL
 16 JUNE 81 1320 HRS MDT
 ASCENSION NO. 394

UPPER AIR DATA
 1670020394
 WHITE SANDS

GEODETIC COORDINATES
 32.40043 LAT DEG
 106.37033 LON DEG

TABLE 6 CON'T

GEOMETRIC ALTITUDE MSL FEET	PRESSURE MILLIBARS	TEMPERATURE AIR DEGREES CENTIGRADE	TEMPERATURE DEWPOINT CENTIGRADE	REL. HUM. PERCENT	DENSITY GM/CUBIC METER	SPEED OF SOUND KNOTS	WIND DATA		INDEX OF REFRACTION
							DIRECTION DEGREES(TN)	SPEED KNOTS	
23500.0	420.2	-15.4	-33.1	20.1	575.7	625.6	338.6	12.8	1.000130
24000.0	417.8	-16.7	-34.0	20.4	567.3	624.0	338.9	13.8	1.000128
24500.0	409.6	-18.0	-35.0	20.7	559.0	622.4	340.4	14.6	1.000126
25000.0	401.5	-19.3	-36.0	20.9	550.8	620.8	336.7	15.2	1.000124
25500.0	393.2	-20.4	-37.0	21.0	541.9	619.4	330.7	15.8	1.000122
26000.0	385.0	-21.6	-38.0	21.0	533.1	618.0	324.0	16.8	1.000120
26500.0	377.0	-22.8	-39.0	21.0	524.4	616.5	317.8	18.1	1.000118
27000.0	369.1	-23.9	-40.0	21.0	515.8	615.1	312.3	19.0	1.000116
27500.0	361.4	-25.1	-40.9	21.0	507.4	613.7	307.8	19.9	1.000114
28000.0	353.9	-26.2	-41.9	21.0	499.2	612.2	306.6	19.7	1.000112
28500.0	346.5	-27.4	-42.9	21.0	491.0	610.8	306.9	19.3	1.000110
29000.0	339.2	-28.5	-43.9	21.0	483.1	609.3	310.7	18.1	1.000108
29500.0	332.2	-29.7	-44.9	21.0	475.3	607.9	313.3	17.4	1.000107
30000.0	325.2	-30.9	-45.9	21.0	467.6	606.4	314.4	17.1	1.000105
30500.0	318.4	-32.0	-46.9	21.0	460.0	605.0	313.3	17.6	1.000103
31000.0	311.8	-33.2	-47.9	21.0	452.6	603.5	311.2	18.6	1.000101
31500.0	305.3	-34.3	-48.9	21.0	445.3	602.1	309.3	19.5	1.000100
32000.0	298.8	-35.5	-50.1	20.6**	438.0	600.6	307.5	20.3	1.000098
32500.0	292.3	-36.5	-52.0	18.0**	430.2	599.4	300.1	21.5	1.000096
33000.0	285.9	-37.4	-54.1	15.4**	422.5	598.1	292.0	22.9	1.000094
33500.0	279.6	-38.4	-56.4	12.9**	415.0	596.9	276.1	24.3	1.000093
34000.0	273.5	-39.4	-59.0	10.3**	407.6	595.6	263.1	27.2	1.000091
34500.0	267.5	-40.4	-61.9	7.8**	400.3	594.4	254.4	30.6	1.000089
35000.0	261.6	-41.4	-65.6	5.2**	393.2	593.1	248.7	34.1	1.000088
35500.0	255.9	-42.4	-71.0	2.7**	386.2	591.8	247.3	36.6	1.000086
36000.0	250.3	-43.4	-90.0	.1**	379.4	590.6	247.3	38.9	1.000085
36500.0	244.6	-44.2			372.2	589.4	244.8	40.5	1.000083
37000.0	239.0	-45.1			365.2	588.3	242.4	42.1	1.000081
37500.0	233.6	-46.0			358.2	587.2	240.0	43.3	1.000080
38000.0	228.3	-46.9			351.5	586.0	237.8	44.5	1.000078
38500.0	223.1	-47.7			344.8	584.9	237.2	44.7	1.000077
39000.0	218.1	-48.6			338.3	583.8	236.7	44.9	1.000075
39500.0	213.1	-49.5			331.9	582.6	237.3	46.5	1.000074
40000.0	208.3	-50.4			325.6	581.5	237.9	48.0	1.000073
40500.0	203.5	-51.2			319.5	580.3	240.0	47.0	1.000071
41000.0	198.9	-52.1			313.4	579.2	242.2	46.0	1.000070
41500.0	194.2	-52.9			307.1	578.2	244.0	43.7	1.000068
42000.0	189.6	-53.7			301.0	577.1	246.0	41.5	1.000067
42500.0	185.1	-54.5			294.9	576.1	248.0	40.0	1.000066
43000.0	180.8	-55.3			289.0	575.0	250.1	38.8	1.000064

** AT LEAST ONE ASSUMED RELATIVE HUMIDITY VALUE WAS USED IN THE INTERPOLATION.

STATION ALTITUDE 3989.00 FEET MSL
 16 JUNE 81 1 30 HRS MDT
 ASCENSION NO. 394

UPPER AIR DATA
 1670020394
 WHITE SANDS
 TABLE 6 CON'T

GEODETIC COORDINATES
 32.40043 LAT DEG
 106.37033 LON DEG

GEOMETRIC ALTITUDE MSL FEET	PRESSURE MILLIBARS	TEMPERATURE AIR DEGREES CENTIGRADE	REL. HUM. PERCENT	DENSITY GM/CUBIC METER	SPEED OF SOUND KNOTS	WIND DATA DIRECTION (TN) DEGREES	SPEED KNOTS	INDEX OF REFRACTION
43500.0	176.5	-56.1		283.3	574.0	251.5	36.4	1.000063
44000.0	172.3	-56.9		277.6	572.9	253.0	33.7	1.000062
44500.0	168.3	-57.7		272.1	571.8	251.8	32.6	1.000061
45000.0	164.3	-58.5		266.6	570.8	249.1	32.4	1.000059
45500.0	160.4	-59.3		261.3	569.7	248.0	32.6	1.000058
46000.0	156.6	-60.1		256.1	568.7	248.3	33.1	1.000057
46500.0	152.9	-60.5		250.5	568.1	249.3	33.2	1.000056
47000.0	149.2	-61.0		245.0	567.5	252.8	31.7	1.000055
47500.0	145.6	-62.2		240.4	565.8	256.5	30.3	1.000054
48000.0	142.1	-63.2		235.8	564.4	259.8	30.2	1.000053
48500.0	138.6	-63.8		230.6	563.7	263.0	30.4	1.000051
49000.0	135.2	-64.3		225.5	563.0	265.5	30.4	1.000050
49500.0	131.8	-64.8		220.5	562.3	267.3	30.1	1.000049
50000.0	128.6	-65.4		215.6	561.6	269.2	29.6	1.000048
50500.0	125.4	-65.9		210.8	560.9	270.8	27.1	1.000047
51000.0	122.4	-66.4		206.2	560.2	272.8	24.5	1.000046
51500.0	119.3	-66.9		201.6	559.4	274.3	21.8	1.000045
52000.0	116.4	-67.3		197.0	559.0	275.9	19.1	1.000044
52500.0	113.5	-66.2		191.1	560.4	277.8	16.7	1.000043
53000.0	110.7	-67.0		187.1	559.4	279.4	15.4	1.000042
53500.0	108.0	-67.7		183.1	558.3	281.4	14.0	1.000041
54000.0	105.3	-68.5		179.2	557.3	289.3	11.4	1.000040
54500.0	102.6	-68.7		174.9	557.1	303.2	9.0	1.000039
55000.0	100.1	-67.7		169.7	558.4	320.1	6.6	1.000038
55500.0	97.6	-67.9		165.6	558.1	342.5	3.1	1.000037
56000.0	95.1	-68.1		161.6	557.9	69.2	2.5	1.000036
56500.0	92.8	-68.3		157.8	557.6	115.5	4.3	1.000035
57000.0	90.5	-68.5		154.0	557.3	138.2	6.6	1.000034
57500.0	88.2	-68.7		150.3	557.1	148.3	9.4	1.000033
58000.0	86.0	-68.9		146.7	556.8	147.8	10.9	1.000033
58500.0	83.8	-69.1		143.1	556.5	147.5	12.4	1.000032
59000.0	81.7	-69.3		139.7	556.2	146.7	13.7	1.000031
59500.0	79.7	-69.5		136.3	556.0	144.7	14.4	1.000030
60000.0	77.7	-69.7		133.1	555.7	143.0	15.2	1.000030
60500.0	75.8	-69.9		129.9	555.4	139.5	14.7	1.000029
61000.0	73.9	-68.8		125.9	557.0	133.6	13.3	1.000028
61500.0	72.1	-66.3		121.3	560.3	126.4	12.1	1.000027
62000.0	70.3	-63.8		116.9	563.7	124.7	11.6	1.000026
62500.0	68.6	-63.8		114.1	563.6	123.0	11.0	1.000025
63000.0	66.9	-64.3		111.5	563.1	120.4	10.5	1.000025

STATION ALTITUDE 3989.00 FEET MSL
 16 JUNE 81 130 HRS MDT
 ASCENSION NO. 394

UPPER AIR DATA
 1670020394
 WHITE SANDS
 TABLE 6 CON'T

GEODETIC COORDINATES
 32.40043 LAT DEG
 106.37033 LON DEG

GEOMETRIC ALTITUDE MSL FEET	PRESSURE MILLIBARS	TEMPERATURE AIR DEGREES CENTIGRADE	REL. HUM. PERCENT	DENSITY GM/CUBIC METER	SPEED OF SOUND KNOTS	WIND DATA DIRECTIONS (TNI) DEGREES	SPEED KNOTS	INDEX OF REFRACTION
63500.0	65.3	-63.7		108.6	563.8	116.5	9.8	1.000024
64000.0	63.7	-63.2		105.7	564.5	112.1	9.2	1.000024
64500.0	62.2	-62.7		102.9	565.2	107.5	8.8	1.000023
65000.0	60.7	-62.2		100.2	565.9	102.7	8.6	1.000022
65500.0	59.2	-61.6		97.5	566.6	98.6	8.4	1.000022
66000.0	57.8	-61.1		94.9	567.3	99.5	8.3	1.000021
66500.0	56.4	-60.6		92.4	568.0	100.3	8.2	1.000021
67000.0	55.0	-60.1		90.0	568.7	98.5	8.3	1.000020
67500.0	53.7	-59.5		87.6	569.4	94.6	8.6	1.000020
68000.0	52.4	-59.0		85.3	570.1	91.0	8.9	1.000019
68500.0	51.2	-58.5		83.0	570.8	86.5	10.2	1.000018
69000.0	49.9	-58.0		80.8	571.5	82.9	11.6	1.000018
69500.0	48.8	-57.6		78.8	572.0	82.0	13.9	1.000018
70000.0	47.6	-57.2		76.8	572.5	85.0	18.3	1.000017
70500.0	46.5	-56.8		74.9	573.0	86.6	22.9	1.000017
71000.0	45.4	-56.4		73.0	573.5	90.0	25.8	1.000016
71500.0	44.4	-56.0		71.2	574.0	93.6	27.7	1.000016
72000.0	43.3	-55.7		69.4	574.5	97.2	29.8	1.000015
72500.0	42.3	-55.3		67.7	575.1	98.1	28.1	1.000015
73000.0	41.4	-54.9		66.0	575.6	99.0	26.2	1.000015
73500.0	40.4	-54.5		64.4	576.1	98.9	24.9	1.000014
74000.0	39.5	-54.1		62.7	576.6	96.3	24.9	1.000014
74500.0	38.5	-53.7		61.2	577.1	93.6	25.0	1.000014
75000.0	37.5	-53.3		59.6	577.6	92.4	25.2	1.000013
75500.0	36.8	-52.9		58.2	578.1	92.0	25.4	1.000013
76000.0	35.9	-52.6		56.7	578.6	91.6	25.6	1.000013
76500.0	35.1	-52.2		55.3	579.1	90.4	25.6	1.000012
77000.0	34.3	-51.8		53.9	579.6	89.2	25.6	1.000012
77500.0	33.5	-51.4		52.6	580.1	87.8	25.6	1.000012
78000.0	32.7	-51.0		51.2	580.6	86.1	25.6	1.000011
78500.0	31.9	-50.6		50.0	581.2	84.4	25.7	1.000011
79000.0	31.2	-50.2		48.7	581.7	82.1	25.7	1.000011
79500.0	30.5	-49.8		47.5	582.2	79.4	25.8	1.000011
80000.0	29.8	-49.5		46.3	582.6	76.7	25.9	1.000010
80500.0	29.1	-49.3		45.3	582.9	79.3	26.4	1.000010
81000.0	28.4	-49.1		44.2	583.1	82.1	27.1	1.000010
81500.0	27.8	-48.9		43.1	583.4	84.7	27.7	1.000010
82000.0	27.1	-48.7		42.1	583.7	87.1	28.0	1.000009
82500.0	26.5	-48.4		41.1	584.0	89.4	28.4	1.000009
83000.0	25.9	-48.2		40.2	584.3	90.2	28.7	1.000009

STATION ALTITUDE 3989.00 FEET MSL
 16 JUNE 81 1320 HRS MDT
 ASCENSION NO. 394

UPPER AIR DATA
 1670020394
 WHITE SANDS

GEODETTIC COORDINATES
 32.40043 LAT DEG
 106.37033 LON DEG

TABLE 6 CON'T

GEOMETRIC ALTITUDE MSL FEET	PRESSURE MILLIBARS	TEMPERATURE AIR DEGREE CENTIGRADE	REL. HUM. PERCENT	DENSITY GM/CUBIC METER	SPEED OF SOUND KNOTS	WIND DATA		INDEX OF REFRACTION
						DIRECTION(TN) DEGREES	SPEED KNOTS	
83500.0	25.3	-48.0		39.2	584.5	89.1	28.9	1.000009
84000.0	24.8	-47.8		38.3	584.8	88.0	29.1	1.000009
84500.0	24.2	-47.6		37.4	585.1	88.0	30.4	1.000008
85000.0	23.7	-47.4		36.5	585.4	89.3	33.0	1.000008
85500.0	23.1	-47.2		35.7	585.6	90.3	35.5	1.000008
86000.0	22.6	-46.9		34.8	585.9	91.4	37.1	1.000008
86500.0	22.1	-46.7		34.0	586.2	92.7	37.6	1.000008
87000.0	21.6	-46.5		33.2	586.5	93.9	38.1	1.000007
87500.0	21.1	-46.3		32.4	586.8	93.8	38.2	1.000007
88000.0	20.6	-46.1		31.7	587.0	92.3	37.7	1.000007
88500.0	20.2	-45.9		30.9	587.3	90.8	37.2	1.000007
89000.0	19.7	-45.7		30.2	587.6	90.5	36.5	1.000007
89500.0	19.3	-45.5		29.5	587.8	91.7	35.6	1.000007
90000.0	18.8	-45.3		28.8	588.1	92.9	34.7	1.000006
90500.0	18.4	-45.1		28.1	588.3	94.3	34.0	1.000006
91000.0	18.0	-44.9		27.5	588.6	96.1	33.5	1.000006
91500.0	17.6	-44.7		26.9	588.8	98.0	33.0	1.000006
92000.0	17.2	-44.5		26.2	589.1	99.3	33.3	1.000006
92500.0	16.8	-44.3		25.6	589.4	99.6	34.8	1.000006
93000.0	16.5	-44.1		25.0	589.6	99.9	36.3	1.000006
93500.0	16.1	-43.9		24.5	589.9	101.2	36.3	1.000005
94000.0	15.7	-43.7		23.9	590.1	104.7	33.9	1.000005
94500.0	15.4	-43.5		23.3	590.4	108.6	31.6	1.000005
95000.0	15.0	-43.3		22.8	590.6			1.000005
95500.0	14.7	-43.1		22.3	590.9			1.000005
96000.0	14.4	-42.9		21.8	591.1			1.000005
96500.0	14.1	-42.7		21.3	591.4			1.000005
97000.0	13.8	-42.5		20.8	591.6			1.000005
97500.0	13.4	-42.3		20.3	591.9			1.000005

STATION ALTITUDE 3989.00 FEET MSL
 16 JUNE 81
 ASCENSION NO. 594

MANDATORY LEVELS
 1670020394
 WHITE SANDS

GEODETTIC COORDINATES
 32.40043 LAT DEG
 106.37033 LON DEG

TABLE 7

PRESSURE GEOPOTENTIAL MILLIBARS	FEET	AIR TEMPERATURE DEGREES CENTIGRADE	REL. HUM. PERCENT	WIND DATA	
				DIRECTION DEGREES(TN)	SPEED KNOTS
850.0	5224.	21.1	28.	9999.0	9999.0XX
800.0	6928.	16.0	32.	107.1	14.1
750.0	8711.	11.1	35.	110.5	21.8
700.0	10583.	6.3	36.	127.8	10.6
650.0	12562.	2.2	24.	100.9	6.6
600.0	14683.	3.1	18.	84.5	9.5
550.0	16978.	-9	18.	48.6	12.9
500.0	19455.	-4.9	18.	6.9	7.0
450.0	22137.	-11.8	19.	349.3	7.9
400.0	25053.	-19.5	21.	335.7	15.3
350.0	28261.	-26.8	21.	305.8	19.6
300.0	31848.	-35.3	21.	307.9	20.2
250.0	35945.	-43.4		247.3	38.9
200.0	40780.	-51.9		241.6	46.2
175.0	43591.	-56.4		252.0	35.4
150.0	46765.	-60.7		251.8	32.1
125.0	50432.	-66.0		271.0	26.8
100.0	54846.	-67.7		319.9	6.7
80.0	59232.	-69.5		145.1	14.3
70.0	61862.	-63.4		124.5	11.5
60.0	64970.	-61.9		100.9	8.5
50.0	68705.	-58.0		83.4	11.4
40.0	73358.	-54.3		98.3	24.9
30.0	79473.	-49.6		77.9	25.8
25.0	83405.	-47.9		88.6	29.0
20.0	88258.	-45.8.		90.4	37.0
15.0	94578.	-43.3			

** AT LEAST ONE ASSUMED RELATIVE HUMIDITY VALUE WAS USED IN THE INTERPOLATION.

STATION ALTITUDE 3951.40 FEET MSL
 16 JUNE 81 1300 HRS MDT
 ASCENSION NO. 25

SIGNIFICANT LEVEL DATA
 1670050025
 APACHE

GEODETIC COORDINATES
 32.62700 LAT DEG
 106.39352 LON DEG

TABLE 8

PRESSURE MILLIBARS	GEOMETRIC ALTITUDE		TEMPERATURE AIR DEWPOINT		REL. HUM. PERCENT
	MSL	FEET	DEGREES	CENTIGRADE	
888.9	3951.4	28.5	1.1	17.0	
873.0	4472.4	23.5	4.0	28.0	
850.0	5233.9	21.2	3.0	30.0	
728.0	9539.4	8.5	-4.0	41.0	
709.4	10239.7	6.2	-4.3	47.0	
700.0	10598.4	5.1	-5.8	45.0	
663.4	12032.5	2.6	-14.5	27.0	
618.8	13884.9	3.5	-17.3	20.0	
566.6	16215.3	-1.0	-20.5	21.0	
549.8	17004.7	-1.0	-21.1	20.0	
500.0	19474.1	-5.6	-24.9	20.0	
400.0	25079.4	-19.5	-35.7	22.0	
300.0	31895.1	-35.4	-49.0	23.0	
285.4	33030.9	-38.8			
250.0	35988.3	-44.5			
221.6	38622.0	-49.1			
200.0	40824.2	-52.2			
150.0	46837.7	-61.1			
117.6	51747.2	-67.5			
109.3	53204.5	-66.7			
104.2	54153.5	-68.6			
100.0	54967.2	-68.4			
79.6	59488.9	-67.9			
74.0	60931.5	-69.4			
70.0	62041.6	-63.8			
63.6	63981.3	-64.2			
60.8	64897.5	-61.4			
50.0	68933.0	-58.4			
37.0	75251.4	-54.4			
34.6	76683.8	-50.8			
30.0	79766.1	-49.4			
27.8	81416.5	-49.6			
23.0	85572.7	-44.2			

STATION ALTITUDE 3951.40 FEET MSL
 16 JUNE 81
 ASCENSION NO. 25

UPPER AIR DATA
 1670050025
 APACHE

GEODETIC COORDINATES
 32.62700 LAT DEG
 106.39352 LON DEG

TABLE 9

GEOMETRIC ALTITUDE MSL FEET	PRESSURE MILLIBARS	TEMPERATURE AIR DEGREES CENTIGRADE	REL. HUM. PERCENT	DENSITY GM/CUBIC METER	SPEED OF SOUND KNOTS	WIND DATA DIRECTION DEGREES(TN)	SPEED KNOTS	INDEX OF REFRACTION
3951.4	888.9	28.5	17.0	1023.7	677.6	140.0	12.0	1.000256
4000.0	887.4	28.0	18.0	1023.4	677.1	139.8	12.2	1.000257
4500.0	872.2	23.4	28.1	1020.9	672.1	137.9	14.2	1.000262
5000.0	857.0	21.9	29.4	1008.4	670.3	136.5	16.2	1.000258
5500.0	841.9	20.4	30.7	995.8	668.6	133.6	17.5	1.000254
6000.0	826.9	18.9	32.0	983.0	666.9	125.0	16.1	1.000250
6500.0	812.1	17.5	33.2	970.5	665.2	125.2	13.0	1.000246
7000.0	797.7	16.0	34.5	958.2	663.4	122.3	13.5	1.000242
7500.0	783.4	14.5	35.8	946.0	661.7	117.9	13.7	1.000238
8000.0	769.5	13.0	37.1	934.1	660.0	124.6	16.4	1.000234
8500.0	755.7	11.6	38.3	922.3	658.2	137.4	20.6	1.000230
9000.0	742.3	10.1	39.6	910.7	656.5			1.000226
9500.0	729.0	8.6	40.9	899.2	654.7			1.000222
10000.0	715.7	7.0	44.9	887.9	652.8			1.000220
10500.0	702.6	5.4	45.5	876.7	650.9			1.000215
11000.0	689.6	4.4	40.0	863.9	649.6			1.000209
11500.0	676.8	3.5	33.7	850.9	648.5			1.000203
12000.0	664.2	2.7	27.4	838.0	647.4			1.000197
12500.0	651.8	2.8	25.2	821.9	647.5			1.000192
13000.0	639.7	3.1	23.3	806.0	647.8			1.000188
13500.0	627.8	3.3	21.5	790.3	648.1			1.000184
14000.0	616.1	3.3	20.0	775.7	648.0			1.000180
14500.0	604.6	2.3	20.3	763.9	646.9			1.000177
15000.0	593.2	1.3	20.5	752.2	645.7			1.000175
15500.0	582.1	.4	20.7	740.8	644.6			1.000172
16000.0	571.2	-.6	20.9	729.5	643.4			1.000169
16500.0	560.5	-1.0	20.6	716.9	642.9	46.5	12.9	1.000166
17000.0	549.9	-1.0	20.0	703.4	642.9	41.7	10.5	1.000162
17500.0	539.4	-1.9	20.0	692.3	641.8	23.6	9.1	1.000160
18000.0	529.2	-2.9	20.0	681.5	640.7	11.1	8.8	1.000157
18500.0	519.1	-3.8	20.0	670.9	639.6	21.4	9.1	1.000154
19000.0	509.2	-4.7	20.0	660.4	638.5			1.000152
19500.0	499.5	-5.7	20.0	650.1	637.3			1.000149
20000.0	489.6	-6.9	20.2	640.3	635.9			1.000147
20500.0	480.0	-8.1	20.4	630.6	634.4			1.000144
21000.0	470.5	-9.4	20.5	621.1	632.9			1.000142
21500.0	461.3	-10.6	20.7	611.8	631.4			1.000139
22000.0	452.2	-11.9	20.9	602.6	629.9			1.000137
22500.0	443.3	-13.1	21.1	593.6	628.4			1.000135
23000.0	434.5	-14.3	21.3	584.7	626.8			1.000133

XX WIND DATA INVALID DUE TO MISSING RAW AZIMUTH AND ELEVATION ANGLES.

STATION ALTITUDE 3951.40 FEET MSL
 16 JUNE 81 1300 HRS MDT
 ASCENSION NO. 25

UPPER AIR DATA
 1670050025
 APACHE

GEODETIC COORDINATES
 32.62700 LAT DEG
 106.39352 LON DEG

TABLE 9 CON'T

GEOMETRIC ALTITUDE MSL FEET	PRESSURE MILLIBARS	TEMPERATURE		REL. HUM. PERCENT	DENSITY GM/CUBIC METER	SPEED OF SOUND KNOTS	WIND DATA		INDEX OF REFRACTION
		AIR DEGREES CENTIGRADE	DEWPOINT DEGREES CENTIGRADE				DIRECTION DEGREES(TN)	SPEED KNOTS	
23500.0	426.0	-15.6	-32.6	21.4	575.9	625.3			1.000131
24000.0	417.6	-16.8	-33.6	21.6	567.3	623.8			1.000128
24500.0	409.3	-18.1	-34.6	21.8	558.9	622.3			1.000126
25000.0	401.3	-19.3	-35.6	22.0	550.5	620.8			1.000124
25500.0	393.0	-20.5	-36.5	22.1	541.7	619.3			1.000122
26000.0	384.8	-21.6	-37.5	22.1	532.8	617.9			1.000120
26500.0	376.7	-22.8	-38.5	22.2	524.1	616.5			1.000118
27000.0	368.9	-24.0	-39.4	22.3	515.6	615.0			1.000116
27500.0	361.2	-25.1	-40.4	22.4	507.2	613.6			1.000114
28000.0	353.6	-26.3	-41.4	22.4	499.0	612.1			1.000112
28500.0	346.2	-27.5	-42.4	22.5	490.9	610.7			1.000110
29000.0	339.0	-28.6	-43.3	22.6	482.9	609.2			1.000108
29500.0	331.9	-29.8	-44.3	22.6	475.1	607.8			1.000107
30000.0	325.0	-31.0	-45.3	22.7	467.4	606.3			1.000105
30500.0	318.2	-32.1	-46.3	22.8	459.9	604.8			1.000103
31000.0	311.6	-33.3	-47.3	22.9	452.5	603.4			1.000101
31500.0	305.0	-34.5	-48.3	22.9	445.2	601.9			1.000100
32000.0	298.6	-35.7	-50.1	20.9**	438.1	600.3	302.7	20.0	1.000098
32500.0	292.1	-37.2	-56.9	10.8**	431.3	598.4	294.0	21.1	1.000096
33000.0	285.8	-38.7	-77.9	.6**	424.7	596.5	285.2	22.1	1.000095
33500.0	279.5	-39.7			417.0	595.2	276.1	23.1	1.000093
34000.0	273.3	-40.7			409.5	594.0	267.4	24.6	1.000091
34500.0	267.2	-41.6			402.1	592.8	259.0	26.5	1.000090
35000.0	261.3	-42.6			394.8	591.5	252.9	27.6	1.000088
35500.0	255.5	-43.6			387.7	590.3	250.2	25.3	1.000086
36000.0	249.9	-44.5			380.7	589.1	248.3	22.9	1.000085
36500.0	244.2	-45.4			373.5	587.9	255.7	19.5	1.000083
37000.0	238.7	-46.3			366.5	586.8	260.3	19.5	1.000082
37500.0	233.3	-47.1			359.6	585.7	249.5	34.9	1.000080
38000.0	228.0	-48.0			352.8	584.5	245.5	48.9	1.000079
38500.0	222.8	-48.9			346.2	583.4	243.4	55.0	1.000077
39000.0	217.7	-49.6			339.3	582.4	242.3	57.2	1.000076
39500.0	212.7	-50.3			332.6	581.5	243.4	47.2	1.000074
40000.0	207.8	-51.0			326.0	580.6	244.2	40.6	1.000073
40500.0	203.0	-51.7			319.5	579.7	243.1	41.6	1.000071
41000.0	198.3	-52.5			313.1	578.7	242.9	42.2	1.000070
41500.0	193.6	-53.2			306.7	577.8	244.4	42.1	1.000068
42000.0	189.1	-53.9			300.5	576.8	246.0	42.1	1.000067
42500.0	184.6	-54.7			294.3	575.8	247.4	36.6	1.000066
43000.0	180.2	-55.4			288.4	574.8	249.3	31.1	1.000064

** AT LEAST ONE ASSUMED RELATIVE HUMIDITY VALUE WAS USED IN THE INTERPOLATION.

BY WIND DATA TRAILER ONE TO METEOROLOGICAL DATA CENTER

STATION ALTITUDE 3951.40 FEET MSL
 16 JUNE 81 1300 HRS MDT
 ASCENSION NO. 25

UPPER AIR DATA
 1670050025
 APACHE
 TABLE 9 CON'T

GEODETIC COORDINATES
 32.62700 LAT DEG
 106.39352 LON DEG

GEOMETRIC ALTITUDE MSL FEET	PRESSURE MILLIBARS	TEMPERATURE AIR DEGREES CENTIGRADE	REL. HUM. PERCENT	DENSITY GM/CUBIC METER	SPEED OF SOUND KNOTS	WIND DIRECTION DEGREES(TN)	WIND DATA SPEED KNOTS	INDEX OF REFRACTION
43500.0	170.0	-56.2		282.5	573.9	250.4	29.9	1.000063
44000.0	171.8	-56.9		276.8	572.9	251.1	30.2	1.000062
44500.0	167.7	-57.6		271.2	571.9	249.7	32.2	1.000060
45000.0	163.8	-58.4		265.7	570.9	247.0	35.8	1.000059
45500.0	159.9	-59.1		260.3	569.9	245.1	37.5	1.000058
46000.0	156.1	-59.9		255.0	569.0	243.9	35.2	1.000057
46500.0	152.4	-60.6		249.8	568.0	243.3	33.0	1.000056
47000.0	148.8	-61.3		244.7	567.0	246.9	31.0	1.000054
47500.0	145.2	-62.0		239.4	566.1	250.9	29.1	1.000053
48000.0	141.6	-62.6		234.3	565.3	255.5	27.1	1.000052
48500.0	138.1	-63.3		229.3	564.4	260.9	25.3	1.000051
49000.0	134.8	-63.9		224.4	563.5	264.2	24.0	1.000050
49500.0	131.5	-64.6		219.6	562.6	267.9	22.8	1.000049
50000.0	128.2	-65.2		214.9	561.8	269.2	22.5	1.000048
50500.0	125.1	-65.9		210.3	560.9	270.4	22.4	1.000047
51000.0	122.0	-66.5		205.8	560.0	275.6	21.7	1.000046
51500.0	119.0	-67.2		201.4	559.1	282.1	21.2	1.000045
52000.0	116.1	-67.4		196.6	558.9	283.0	21.7	1.000044
52500.0	113.2	-67.1		191.4	559.2	281.1	22.6	1.000043
53000.0	110.4	-66.8		186.4	559.6	279.3	22.4	1.000042
53500.0	107.7	-67.3		182.2	559.0	277.4	21.1	1.000041
54000.0	105.0	-68.3		178.6	557.6	277.3	18.7	1.000040
54500.0	102.4	-68.5		174.3	557.3	286.1	12.8	1.000039
55000.0	99.8	-68.4		169.9	557.5	308.1	7.6	1.000038
55500.0	97.3	-68.3		165.6	557.5	319.3	2.5	1.000037
56000.0	94.9	-68.3		161.4	557.6	107.6	2.8	1.000036
56500.0	92.6	-68.2		157.3	557.7	127.8	5.9	1.000035
57000.0	90.3	-68.2		153.4	557.8	138.3	8.4	1.000034
57500.0	88.0	-68.1		149.5	557.8	141.3	10.1	1.000033
58000.0	85.8	-68.1		145.8	557.9	139.7	10.4	1.000032
58500.0	83.7	-68.0		142.1	558.0	137.9	10.6	1.000032
59000.0	81.6	-68.0		138.5	558.1	133.7	10.7	1.000031
59500.0	79.6	-67.9		135.0	558.1	129.7	10.8	1.000030
60000.0	77.6	-68.4		132.0	557.4	127.0	10.3	1.000029
60500.0	75.6	-69.0		129.0	556.7	124.5	9.6	1.000029
61000.0	73.7	-69.1		125.9	556.6	123.4	8.8	1.000028
61500.0	71.9	-66.5		121.3	560.0	124.1	8.0	1.000027
62000.0	70.1	-64.0		116.8	563.4	124.2	7.1	1.000026
62500.0	68.4	-63.9		113.9	563.6	118.9	6.0	1.000025
63000.0	66.8	-64.0		111.2	563.4	111.3	5.0	1.000025

STATION ALTITUDE 3951.40 FEET MSL
 16 JUNE 81 1300 HRS MDT
 ASCENSION NO. 25

UPPER AIR DATA
 1670050025
 APACHE

GEODETIC COORDINATES
 32.62700 LAT DEG
 106.39352 LON DEG

TABLE 9 CON'T

GEOMETRIC ALTITUDE MSL FEET	PRESSURE MILLIBARS	TEMPERATURE		REL. HUM. PERCENT	DENSITY GM/CUBIC METER	SPEED OF SOUND KNOTS	WIND DATA		INDEX OF REFRACTION
		AIR DEGREES	DEWPOINT CENTIGRADE				DIRECTION DEGREES(TN)	SPEED KNOTS	
63500.0	65.1	-64.1			108.5	563.3	109.2	4.6	1.000024
64000.0	63.5	-64.1			105.9	563.2	109.3	4.4	1.000024
64500.0	62.0	-62.6			102.6	565.3	108.7	4.8	1.000023
65000.0	60.5	-61.3			99.5	567.0	107.4	6.7	1.000022
65500.0	59.1	-61.0			96.9	567.5	106.7	8.5	1.000022
66000.0	57.6	-60.6			94.5	568.0	102.9	9.5	1.000021
66500.0	56.3	-60.2			92.0	568.5	99.4	10.5	1.000020
67000.0	54.9	-59.8			89.7	569.0	99.0	10.9	1.000020
67500.0	53.6	-59.5			87.4	569.5	102.6	10.6	1.000019
68000.0	52.3	-59.1			85.1	570.0	106.2	10.4	1.000019
68500.0	51.1	-58.7			83.0	570.5	99.9	11.5	1.000018
69000.0	49.8	-58.4			80.8	571.0	94.3	12.8	1.000018
69500.0	48.7	-58.0			78.8	571.4	88.3	15.0	1.000018
70000.0	47.5	-57.7			76.8	571.8	82.9	18.3	1.000017
70500.0	46.4	-57.4			74.9	572.2	79.2	21.7	1.000017
71000.0	45.3	-57.1			73.1	572.6	85.4	23.8	1.000016
71500.0	44.2	-56.8			71.2	573.1	90.9	26.2	1.000016
72000.0	43.2	-56.5			69.5	573.5	94.8	27.8	1.000015
72500.0	42.2	-56.1			67.7	573.9	97.8	27.8	1.000015
73000.0	41.2	-55.8			66.0	574.3	100.7	27.9	1.000015
73500.0	40.2	-55.5			64.4	574.7	100.5	27.3	1.000014
74000.0	39.3	-55.2			62.8	575.2	97.9	26.3	1.000014
74500.0	38.3	-54.9			61.2	575.6	95.0	25.4	1.000014
75000.0	37.4	-54.6			59.7	576.0	93.1	25.0	1.000013
75500.0	36.6	-53.8			58.1	577.0	91.5	24.8	1.000013
76000.0	35.7	-52.5			56.4	578.7	90.0	24.6	1.000013
76500.0	34.9	-51.3			54.8	580.3	87.7	24.4	1.000012
77000.0	34.1	-50.7			53.4	581.1	85.3	24.3	1.000012
77500.0	33.3	-50.4			52.1	581.4	83.0	24.2	1.000012
78000.0	32.6	-50.2			50.9	581.7	82.3	25.8	1.000011
78500.0	31.8	-50.0			49.7	582.0	81.7	27.5	1.000011
79000.0	31.1	-49.7			48.5	582.3	81.2	29.0	1.000011
79500.0	30.4	-49.5			47.3	582.6	80.2	27.8	1.000011
80000.0	29.7	-49.4			46.2	582.7	79.0	26.6	1.000010
80500.0	29.0	-49.5			45.2	582.6	77.5	25.7	1.000010
81000.0	28.3	-49.5			44.2	582.5	74.3	26.7	1.000010
81500.0	27.7	-49.5			43.1	582.6	71.3	27.7	1.000010
82000.0	27.1	-48.8			42.0	583.5	70.3	28.3	1.000009
82500.0	26.5	-48.2			41.0	584.3	75.3	27.3	1.000009
83000.0	25.9	-47.5			39.9	585.2	80.6	26.5	1.000009

STATION ALTITUDE 3951.40 FEET MSL
 16 JUNE 81 1300 HRS MDI
 ASCENSION NO. 25

UPPER AIR DATA
 1670050025
 APACHE

GEODETIC COORDINATES
 32.62700 LAT DEG
 106.39352 LON DEG

TABLE 9 CON'T

GEOMETRIC ALTITUDE MSL FEET	PRESSURE MILLIBARS	TEMPERATURE		REL. HUM. PERCENT	DENSITY GM/CUBIC METER	SPEED OF SOUND KNOTS	WIND DATA		INDEX OF REFRACTION
		AIR DEGREES	DEWPOINT DEGREES				DIRECTION DEGREES(TN)	SPEED KNOTS	
83500.0	25.3	-46.9			38.9	586.0			1.000009
84000.0	24.7	-46.2			37.9	586.8			1.000008
84500.0	24.2	-45.6			37.0	587.7			1.000008
85000.0	23.6	-44.9			36.0	588.5			1.000008
85500.0	23.1	-44.3			35.1	589.4			1.000008

STATION ALTITUDE 3951.40 FEET MSL
 16 JUNE 81 1300 HRS MDT
 ASCENSION NO. 25

MANDATORY LEVELS
 1670050025
 APACHE

GEODETTIC COORDINATES
 32.62700 LAT DEG
 106.39352 LON DEG

TABLE 10

PRESSURE GEOPOTENTIAL		TEMPERATURE		REL. HUM.	WIND DATA	
MILLIBARS	FEET	AIR DEGREES	DEWPOINT CENTIGRADE	PERCENT	DIRECTION DEGREES(TN)	SPEED KNOTS
850.0	5230.	21.2	3.0	30.	135.9	17.1
800.0	6936.	16.2	.5	34.	123.7	13.4
750.0	8719.	10.9	-2.5	39.	9999.0XX	9999.0XX
700.0	10588.	5.1	-5.8	45.	9999.0	9999.0XX
650.0	12561.	2.9	-15.2	25.	9999.0	9999.0XX
600.0	14688.	1.9	-18.4	20.	9999.0	9999.0XX
550.0	16973.	-1.0	-21.1	20.	42.1	10.5
500.0	19447.	-5.6	-24.9	20.	9999.0	9999.0XX
450.0	22124.	-12.2	-30.0	21.	9999.0	9999.0XX
400.0	25037.	-19.5	-35.7	22.	9999.0	9999.0XX
350.0	28246.	-26.9	-41.9	22.	9999.0	9999.0XX
300.0	31831.	-35.4	-49.0	23.	305.0	19.8
250.0	35909.	-44.5			248.0	23.1
200.0	40725.	-52.2			242.4	42.2
175.0	43534.	-56.3			250.6	29.9
150.0	46710.	-61.1			245.5	31.8
125.0	50384.	-65.9			270.4	22.4
100.0	54796.	-68.4			304.2	8.2
80.0	59192.	-67.9			130.8	10.8
70.0	61828.	-63.8			124.1	7.1
60.0	64935.	-61.2			107.2	7.2
50.0	68673.	-58.4			95.4	12.5
40.0	73310.	-55.4			100.2	27.2
30.0	79424.	-49.4			79.7	27.2
25.0	83357.	-46.6				

XX WIND DATA INVALID DUE TO MISSING RAW AZIMUTH AND ELEVATION ANGLES.

STATION ALTITUDE 4010.40 FEET MSL
 16 JUNE 81
 ASCENSION NO. 46

SIGNIFICANT LEVEL DATA
 167022004b
 NW 30

GEODETIC COORDINATES
 32.88497 LAT DEG
 106.49714 LON DEG

TABLE 11

PRESSURE MILLIBARS	GEOMETRIC ALTITUDE MSL FEET	TEMPERATURE AIR DEGREES CENTIGRADE	TEMPERATURE DEWPOINT DEGREES CENTIGRADE	REL. HUM. PERCENT
886.2	4010.4	29.9	5.9	22.0
871.2	4506.7	25.4	11.2	41.0
850.0	5213.2	22.0	.5	24.0
790.8	7246.1	15.6	-1.9	30.0
771.4	7935.4	13.5	-2.4	33.0
714.4	10033.6	7.0	-6.0	39.0
700.0	10582.7	6.0	-6.9	39.0
668.2	11828.0	3.4	-14.2	26.0
632.0	13307.8	1.8	-19.3	19.0
579.4	15604.3	.5	-21.7	17.0
562.6	16379.2	-.2	-22.2	17.0
534.2	17735.8	-2.5	-24.1	17.0
500.0	19450.9	-5.8	-26.9	17.0
418.2	23953.5	-17.5	-35.0	20.0
400.0	25045.9	-19.4	-37.1	19.0
353.8	28008.1	-26.2	-42.8	19.0
314.0	30807.8	-33.5	-49.0	19.0
300.0	31857.1	-35.7		
275.6	33779.8	-40.6		
250.0	35947.4	-44.7		
235.0	37302.9	-47.5		
219.0	38835.2	-48.4		
200.0	40785.3	-52.6		
189.0	41984.7	-54.4		
174.4	43678.6	-55.4		
150.0	46806.1	-61.1		
121.4	51074.8	-67.4		
109.7	53091.5	-67.0		
100.0	54927.0	-69.0		
77.2	60034.1	-69.0		
73.5	61013.4	-64.9		
70.0	61997.0	-64.5		
64.0	63805.5	-64.5		
56.4	66391.5	-58.9		
50.0	68996.9	-57.5		
39.4	73898.3	-55.1		
35.8	75941.9	-50.7		
30.0	79752.9	-50.4		
24.4	84263.7	-45.3		
20.0	88649.2	-46.0		

STATION ALTITUDE 4010.40 FEET MSL
16 JUNE 81 1320 HRS MDT
ASCENSION NO. 46

SIGNIFICANT LEVEL DATA
1670220046
NW 30

GEODETIC COORDINATES
32.88497 LAT DEG
106.49714 LON DEG

TABLE 11 CON'T

PRESSURE GEOMETRIC ALTITUDE MILLIBARS MSL FEET	TEMPERATURE AIR DEWPOINT DEGREES CENTIGRADE	REL. HUM. PERCENT
15.5 94327.8		-40.9

STATION ALTITUDE 4010.40 FEET MSL
 16 JUNE 81 1320 HRS MDT
 ASCENSION NO. 46

UPPER AIR DATA
 1670220046
 NW 30

GEODETIC COORDINATES
 32.88497 LAT DEG
 106.49714 LON DEG

TABLE 12

GEOMETRIC ALTITUDE MSL FEET	PRESSURE MILLIBARS	TEMPERATURE AIR DEGREES	TEMPERATURE DEWPOINT CENTIGRADE	REL. HUM. PERCENT	DENSITY GM/CUBIC METER	SPEED OF SOUND KNOTS	WIND DATA DIRECTION DEGREES(TN)	SPEED KNOTS	INJEX OF REFRACTION
4010.4	886.2	29.9	5.9	22.0	1014.7	679.5	150.0	7.0	1.000264
4500.0	871.4	25.5	11.2	40.7	1010.7	675.2	149.1	8.3	1.000282
5000.0	856.3	23.0	4.1	29.1	1003.6	671.7	148.4	9.7	1.000259
5500.0	841.4	21.1	.2	24.8	993.4	669.2	147.9	11.0	1.000249
6000.0	826.6	19.5	-3	26.3	981.2	667.4	147.5	12.4	1.000245
6500.0	812.0	17.9	-9	27.8	969.2	665.6	147.2	13.7	1.000242
7000.0	797.7	16.4	-16	29.3	957.4	663.7	149.1	13.6	1.000238
7500.0	783.6	14.8	-21	31.1	945.5	661.9	151.8	13.4	1.000235
8000.0	769.6	13.3	-25	33.2	933.6	660.2			1.000231
8500.0	755.6	11.8	-33	34.6	921.7	658.4			1.000228
9000.0	741.9	10.2	-42	36.0	910.1	656.5			1.000224
9500.0	728.5	8.7	-50	37.5	898.6	654.7			1.000220
10000.0	715.3	7.1	-59	38.9	887.3	652.9			1.000217
10500.0	702.2	6.2	-67	39.0	874.0	651.7			1.000213
11000.0	689.2	5.1	-92	34.6	861.3	650.4			1.000207
11500.0	676.4	4.1	-121	29.4	848.8	649.1			1.000201
12000.0	663.9	3.2	-148	25.2	835.9	648.0			1.000196
12500.0	651.5	2.7	-164	22.8	822.1	647.3			1.000192
13000.0	639.4	2.1	-182	20.5	808.4	646.7			1.000187
13500.0	627.4	1.7	-195	18.8	794.6	646.1			1.000184
14000.0	615.7	1.4	-200	18.4	780.6	645.8			1.000180
14500.0	604.1	1.1	-205	18.0	766.7	645.4			1.000177
15000.0	592.8	.8	-210	17.5	753.2	645.1			1.000174
15500.0	581.7	.6	-216	17.0	739.8	644.8			1.000170
16000.0	570.8	.4	-220	17.0	727.0	644.3			1.000167
16500.0	560.0	.4	-224	17.0	714.8	643.6			1.000164
17000.0	549.4	-1.3	-231	17.0	703.5	642.6			1.000162
17500.0	539.0	-2.1	-238	17.0	692.4	641.6			1.000159
18000.0	528.8	-3.0	-246	17.0	681.5	640.5			1.000156
18500.0	518.7	-4.0	-254	17.0	670.9	639.3			1.000153
19000.0	508.8	-4.9	-261	17.0	660.5	638.2			1.000151
19500.0	499.0	-5.9	-269	17.0	650.2	637.0		35.8	1.000148
20000.0	489.2	-7.2	-278	17.4	640.6	635.4		12.4	1.000146
20500.0	479.6	-8.5	-287	17.7	631.1	633.9		6.4	1.000144
21000.0	470.2	-9.8	-296	18.0	621.8	632.3		4.9	1.000141
21500.0	461.0	-11.1	-305	18.4	612.6	630.7		6.3	1.000139
22000.0	451.9	-12.4	-314	18.7	603.6	629.2		8.5	1.000137
22500.0	443.0	-13.7	-323	19.0	594.7	627.6		11.3	1.000135
23000.0	434.3	-15.0	-332	19.4	586.0	626.0		14.2	1.000133
23500.0	425.8	-16.3	-341	19.7	577.4	624.4		12.7	1.000131

XX WIND DATA INVALID DUE TO MISSING RAY AZIMUTH AND ELEVATION ANGLES.

STATION ALTITUDE 4010.40 FEET MSL
 16 JUNE 81 1320 HRS MDT
 ASCENSION NO. 46

UPPER AIR DATA
 1670220046
 NW 30

GEOMETRIC ALTITUDE 4010.40 FEET MSL
 16 JUNE 81 1320 HRS MDT
 ASCENSION NO. 46

UPPER AIR DATA
 1670220046
 NW 30

GEODETIC COORDINATES
 32.88497 LAT DEG
 106.49714 LON DEG

TABLE 12 CON'T

GEOMETRIC ALTITUDE MSL FEET	PRESSURE MILLIBARS	TEMPERATURE AIR DEGREES	TEMPERATURE DEWPOINT CENTIGRADE	REL. HUM. PERCENT	DENSITY GM/CUBIC METER	SPEED OF SOUND KNOTS	WIND DATA		INDEX OF REFRACTION
							DIRECTION DEGREES(TN)	SPEED KNOTS	
24000.0	417.4	-17.6	-35.1	20.0	568.8	622.9	315.9	11.6	1.000128
24500.0	409.0	-18.5	-36.0	19.5	559.3	621.8	321.3	13.7	1.000126
25000.0	400.7	-19.3	-37.0	19.0	549.9	620.8	323.5	14.8	1.000124
25500.0	392.5	-20.4	-38.0	19.0	541.0	619.4	322.4	14.3	1.000122
26000.0	384.5	-21.6	-38.9	19.0	532.4	618.0	321.2	15.1	1.000120
26500.0	376.6	-22.7	-39.9	19.0	523.8	616.5	320.1	16.4	1.000118
27000.0	368.9	-23.9	-40.9	19.0	515.5	615.1	320.5	17.7	1.000116
27500.0	361.3	-25.0	-41.8	19.0	507.2	613.7	320.9	18.9	1.000114
28000.0	353.9	-26.2	-42.8	19.0	499.2	612.3	323.2	15.9	1.000112
28500.0	346.5	-27.5	-43.9	19.0	491.2	610.7	326.0	13.4	1.000110
29000.0	339.2	-28.8	-45.0	19.0	483.4	609.0	324.8	15.2	1.000108
29500.0	332.0	-30.1	-46.1	19.0	475.8	607.4	322.8	16.8	1.000107
30000.0	325.0	-31.4	-47.3	19.0	468.3	605.8	318.6	17.8	1.000105
30500.0	318.1	-32.7	-48.4	19.0	460.9	604.1	315.7	18.3	1.000103
31000.0	311.4	-33.9	-51.1	15.5**	453.4	602.6	313.8	18.0	1.000101
31500.0	304.7	-35.0	-59.1	6.5**	445.6	601.3	312.4	17.5	1.000099
32000.0	298.1	-36.1			438.0	599.9	311.8	16.6	1.000098
32500.0	291.6	-37.3			430.8	598.2	310.8	15.8	1.000096
33000.0	285.2	-38.6			423.7	596.6	305.0	14.7	1.000094
33500.0	279.0	-39.9			416.7	595.0	298.3	13.7	1.000093
34000.0	272.9	-41.0			409.5	593.6	281.3	15.7	1.000091
34500.0	266.8	-42.0			402.1	592.3	267.6	19.5	1.000090
35000.0	260.9	-42.9			394.7	591.1	261.3	24.5	1.000088
35500.0	255.1	-43.9			387.5	589.9	257.8	29.7	1.000086
36000.0	249.4	-44.8			380.5	588.7	256.5	32.9	1.000085
36500.0	243.8	-45.8			373.6	587.4	255.8	35.0	1.000083
37000.0	238.3	-46.9			366.8	586.0	254.8	36.7	1.000082
37500.0	232.9	-47.6			359.7	585.1	252.7	37.1	1.000080
38000.0	227.6	-47.9			352.0	584.7	250.7	37.6	1.000078
38500.0	222.4	-48.2			344.4	584.3	249.4	37.7	1.000077
39000.0	217.3	-48.8			337.4	583.6	248.3	37.6	1.000075
39500.0	212.3	-49.8			331.2	582.2	246.9	36.9	1.000074
40000.0	207.4	-50.9			325.2	580.8	245.5	36.1	1.000072
40500.0	202.7	-52.0			319.2	579.4	245.1	38.4	1.000071
41000.0	198.0	-52.9			313.2	578.1	244.8	40.5	1.000070
41500.0	193.4	-53.7			306.9	577.2	245.0	40.8	1.000068
42000.0	188.9	-54.4			300.8	576.2	245.1	41.1	1.000067
42500.0	184.4	-54.7			294.1	575.8	244.8	37.7	1.000066
43000.0	180.1	-55.0			287.6	575.4	244.4	33.6	1.000064
43500.0	175.9	-55.3			281.3	575.0	243.9	31.6	1.000063

** AT LEAST ONE ASSUMED RELATIVE HUMIDITY VALUE WAS USED IN THE INTERPOLATION.

STATION ALTITUDE 4010.40 FEET MSL
 16 JUNE 81 130 HRS MDT
 ASCENSION NO. 46

UPPER AIR DATA
 1670220046
 NW 30

GEODETIC COORDINATES
 32.88497 LAT DEG
 106.49714 LON DEG

TABLE 12 CON'T

GEOMETRIC ALTITUDE MSL FEET	PRESSURE MILLIBARS	TEMPERATURE AIR DEGREES	REL. HUM. PERCENT	DENSITY GM/CUBIC METER	SPEED OF SOUND KNOTS	WIND DATA DIRECTION DEGREES(TN)	SPEED KNOTS	INDEX OF REFRACTION
44000.0	171.7	-56.0		275.5	574.1	243.4	31.3	1.000061
44500.0	167.6	-56.9		270.0	572.9	243.0	31.1	1.000060
45000.0	163.6	-57.8		264.7	571.7	243.2	31.7	1.000059
45500.0	159.7	-58.7		259.5	570.5	243.3	32.2	1.000058
46000.0	155.9	-59.6		254.4	569.3	245.9	31.2	1.000057
46500.0	152.2	-60.5		249.4	568.0	249.1	30.0	1.000056
47000.0	148.6	-61.4		244.4	566.9	253.1	28.8	1.000054
47500.0	144.9	-62.1		239.3	565.9	258.2	27.7	1.000053
48000.0	141.4	-62.9		234.2	564.9	263.8	26.8	1.000052
48500.0	137.9	-63.6		229.3	563.9	266.8	27.4	1.000051
49000.0	134.5	-64.3		224.5	563.0	269.7	28.1	1.000050
49500.0	131.3	-65.1		219.7	562.0	272.1	28.7	1.000049
50000.0	128.0	-65.8		215.1	561.0	274.2	29.1	1.000048
50500.0	124.9	-66.6		210.6	560.0	276.3	29.6	1.000047
51000.0	121.9	-67.3		206.2	559.0	278.6	27.0	1.000046
51500.0	118.8	-67.3		201.1	558.9	281.8	23.3	1.000045
52000.0	115.9	-67.2		196.0	559.1	286.0	19.8	1.000044
52500.0	113.0	-67.1		191.1	559.2	287.2	16.2	1.000043
53000.0	110.2	-67.0		186.2	559.3	289.1	12.6	1.000041
53500.0	107.5	-67.4		182.0	558.8	293.1	9.1	1.000041
54000.0	104.8	-68.0		177.9	558.0	303.6	5.8	1.000040
54500.0	102.2	-68.5		174.0	557.3	335.3	3.2	1.000039
55000.0	99.6	-69.0		170.0	556.6	40.3	1.8	1.000038
55500.0	97.1	-69.0		165.8	556.6	105.8	3.1	1.000037
56000.0	94.7	-69.0		161.6	556.6	122.4	5.8	1.000036
56500.0	92.3	-69.0		157.6	556.6	137.5	6.5	1.000035
57000.0	90.0	-69.0		153.6	556.6	151.4	7.3	1.000034
57500.0	87.8	-69.0		149.8	556.6	162.0	8.5	1.000033
58000.0	85.6	-69.0		146.0	556.6	159.5	8.2	1.000033
58500.0	83.4	-69.0		142.4	556.6	156.6	8.0	1.000032
59000.0	81.4	-69.0		138.8	556.6	153.7	7.8	1.000031
59500.0	79.3	-69.0		135.3	556.6	151.3	7.9	1.000030
60000.0	77.3	-69.0		132.0	556.6	149.1	8.1	1.000029
60500.0	75.4	-67.0		127.5	559.3	140.5	7.1	1.000028
61000.0	73.5	-65.0		123.1	562.1	113.1	5.3	1.000027
61500.0	71.7	-64.7		119.9	562.5	75.7	5.4	1.000027
62000.0	70.0	-64.5		116.9	562.7	60.5	5.8	1.000026
62500.0	68.3	-64.5		114.0	562.7	53.5	5.7	1.000025
63000.0	66.6	-64.5		111.2	562.7	46.5	5.8	1.000025
63500.0	65.0	-64.5		108.5	562.7	59.7	4.1	1.000024

UPPER AIR DATA
1670220046
NW 30

STATION ALTITUDE 4010.40 FEET MSL
16 JUNE 81 1320 HRS MDT
ASCENSION NO. 46

GEODETIC COORDINATES
32.88497 LAT DEG
106.49714 LON DEG

TABLE 12 CONT

GEOMETRIC ALTITUDE MSL FEET	PRESSURE MILLIBARS	TEMPERATURE AIR DEGREES	REL. HUM. PERCENT	DENSITY GM/CUBIC METER	SPEED OF SOUND KNOTS	WIND DATA		INDEX OF REFRACTION
						DIRECTION DEGREES(TN)	SPEED KNOTS	
64000.0	63.4	-64.1		105.6	563.3	100.1	3.0	1.000024
64500.0	61.9	-63.0		102.5	564.8	144.3	3.8	1.000023
65000.0	60.4	-61.9		99.6	566.2	132.1	5.6	1.000022
65500.0	58.9	-60.8		96.7	567.7	120.2	7.7	1.000022
66000.0	57.5	-59.7		93.8	569.1	113.6	10.0	1.000021
66500.0	56.1	-58.8		91.2	570.3	109.7	12.0	1.000020
67000.0	54.8	-58.6		88.9	570.7	106.8	13.8	1.000020
67500.0	53.5	-58.3		86.7	571.1	104.7	15.7	1.000019
68000.0	52.2	-58.0		84.5	571.4	99.9	16.5	1.000019
68500.0	51.0	-57.7		82.4	571.8	94.7	17.1	1.000018
69000.0	49.8	-57.5		80.4	572.2	90.0	17.8	1.000018
69500.0	48.6	-57.2		78.4	572.5	88.1	21.2	1.000017
70000.0	47.4	-57.0		76.4	572.8	87.2	25.1	1.000017
70500.0	46.3	-56.7		74.6	573.1	86.5	29.0	1.000017
71000.0	45.2	-56.5		72.7	573.4	88.1	29.7	1.000016
71500.0	44.2	-56.3		70.9	573.8	90.3	29.7	1.000016
72000.0	43.1	-56.0		69.2	574.1	92.5	29.7	1.000015
72500.0	42.1	-55.8		67.5	574.4	93.5	28.2	1.000015
73000.0	41.1	-55.5		65.8	574.7	94.1	26.0	1.000015
73500.0	40.2	-55.3		64.2	575.0	94.9	23.9	1.000014
74000.0	39.2	-54.9		62.6	575.6	94.2	24.3	1.000014
74500.0	38.3	-53.8		60.8	577.0	92.9	25.9	1.000014
75000.0	37.4	-52.7		59.1	578.4	91.8	27.6	1.000013
75500.0	36.5	-51.7		57.5	579.8	90.5	27.8	1.000013
76000.0	35.7	-50.7		55.9	581.1	88.9	26.9	1.000012
76500.0	34.9	-50.7		54.6	581.1	87.2	26.0	1.000012
77000.0	34.1	-50.6		53.4	581.2	85.5	24.8	1.000012
77500.0	33.3	-50.6		52.1	581.2	83.8	22.9	1.000012
78000.0	32.5	-50.5		50.9	581.3	81.8	21.0	1.000011
78500.0	31.8	-50.5		49.7	581.3	79.6	19.9	1.000011
79000.0	31.1	-50.5		48.6	581.4	77.7	20.3	1.000011
79500.0	30.4	-50.4		47.5	581.4	75.8	20.8	1.000011
80000.0	29.7	-50.1		46.3	581.8	74.4	21.5	1.000010
80500.0	29.0	-49.6		45.2	582.5	73.9	22.7	1.000010
81000.0	28.3	-49.0		44.0	583.3	73.4	23.9	1.000010
81500.0	27.7	-48.4		42.9	584.0	73.4	25.1	1.000010
82000.0	27.1	-47.9		41.9	584.7	75.2	26.5	1.000009
82500.0	26.5	-47.3		40.8	585.5	76.9	27.9	1.000009
83000.0	25.9	-46.7		39.8	586.2	78.4	29.4	1.000009
83500.0	25.3	-46.2		38.8	586.9	79.7	30.5	1.000009

STATION ALTITUDE 4010.40 FEET MSL
 16 JUNE 81 1320 HRS MDT
 ASCENSION NO. 46

UPPER AIR DATA
 1670220046
 NW 30

GEODETIC COORDINATES
 32.88497 LAT DEG
 106.49714 LON DEG

TABLE 12 CONT

GEOMETRIC ALTITUDE MSL FEET	PRESSURE MILLIBARS	TEMPERATURE AIR DEGREES	REL. HUM. PERCENT	DENSITY GM/CUBIC METER	SPEED OF SOUND KNOTS	WIND DATA		INDEX OF REFRACTION
						DIRECTION DEGREES(TN)	SPEED KNOTS	
84000.0	24.7	-45.6		37.8	587.7	80.9	31.7	1.000008
84500.0	24.1	-45.3		36.9	588.0	82.0	32.9	1.000008
85000.0	23.6	-45.4		36.1	587.9	82.5	34.4	1.000008
85500.0	23.1	-45.5		35.3	587.8	82.9	35.9	1.000008
86000.0	22.6	-45.6		34.5	587.7	83.3	37.5	1.000008
86500.0	22.0	-45.7		33.8	587.6	85.8	37.1	1.000008
87000.0	21.6	-45.7		33.0	587.5	88.9	36.4	1.000007
87500.0	21.1	-45.8		32.3	587.4	92.0	35.9	1.000007
88000.0	20.6	-45.9		31.6	587.3	93.1	36.2	1.000007
88500.0	20.1	-46.0		30.9	587.2	92.8	37.0	1.000007
89000.0	19.7	-45.7		30.2	587.6	92.6	37.8	1.000007
89500.0	19.3	-45.2		29.4	588.1	92.0	38.0	1.000007
90000.0	18.8	-44.8		28.7	588.7	90.7	37.1	1.000006
90500.0	18.4	-44.3		28.0	589.3	89.4	36.2	1.000006
91000.0	18.0	-43.9		27.3	589.9	87.9	35.3	1.000006
91500.0	17.6	-43.4		26.7	590.5	90.8	30.0	1.000006
92000.0	17.2	-43.0		26.0	591.0	95.0	24.7	1.000006
92500.0	16.8	-42.5		25.4	591.6	101.5	19.6	1.000006
93000.0	16.5	-42.1		24.8	592.2			1.000006
93500.0	16.1	-41.6		24.2	592.8			1.000005
94000.0	15.7	-41.2		23.6	593.3			1.000005

STATION ALTITUDE 4010.40 FEET MSL
 16 JUNE 81 1320 HRS MDT
 ASCENSION NO. 46

MANDATORY LEVELS
 1670220046
 NW 30

GEODETIC COORDINATES
 32.88497 LAT DEG
 106.49714 LON DEG

TABLE 13

PRESSURE GEOPOTENTIAL		TEMPERATURE	REL. HUM.	WIND DATA	
MILLIBARS	FEET	AIR DEGREE CENTIGRADE	PERCENT	DIRECTION DEGREES(TN)	SPEED KNOTS
850.0	5209.	22.0	24.	148.2	10.2
800.0	6918.	16.6	29.	148.7	13.7
750.0	8702.	11.1	35.	9999.0	9999.0XX
700.0	10573.	6.0	39.	9999.0	9999.0XX
650.0	12549.	2.6	23.	9999.0	9999.0XX
600.0	14665.	1.0	18.	9999.0	9999.0XX
550.0	16952.	-1.2	17.	9999.0	9999.0XX
500.0	19424.	-5.8	17.	305.1	38.5
450.0	22097.	-12.7	19.	314.0	9.1
400.0	25005.	-19.4	19.	323.4	14.8
350.0	28214.	-26.9	19.	324.7	14.4
300.0	31794.	-35.7	19.	312.0	16.9
250.0	35869.	-44.7	19.	256.6	32.6
200.0	40687.	-52.6	19.	244.9	39.7
175.0	43496.	-55.4	19.	243.8	31.6
150.0	46680.	-61.1	19.	251.0	29.4
125.0	50348.	-66.5	19.	276.2	29.6
100.0	54758.	-69.0	19.	23.8	2.0
80.0	59135.	-69.0	19.	152.2	7.9
70.0	61785.	-64.5	19.	60.9	5.8
60.0	64885.	-61.6	19.	129.5	5.9
50.0	68639.	-57.5	19.	91.2	17.6
40.0	73287.	-55.3	19.	94.9	23.8
30.0	79413.	-50.4	19.	75.1	21.0
25.0	83355.	-45.9	19.	80.2	31.0
20.0	88233.	-46.0	19.	92.8	37.1

** AT LEAST ONE ASSUMED RELATIVE HUMIDITY VALUE WAS USED IN THE INTERPOLATION.

XX WIND DATA INVALID DUE TO MISSING RAW AZIMUTH AND ELEVATION ANGLES.

DATE
ILMED
-8